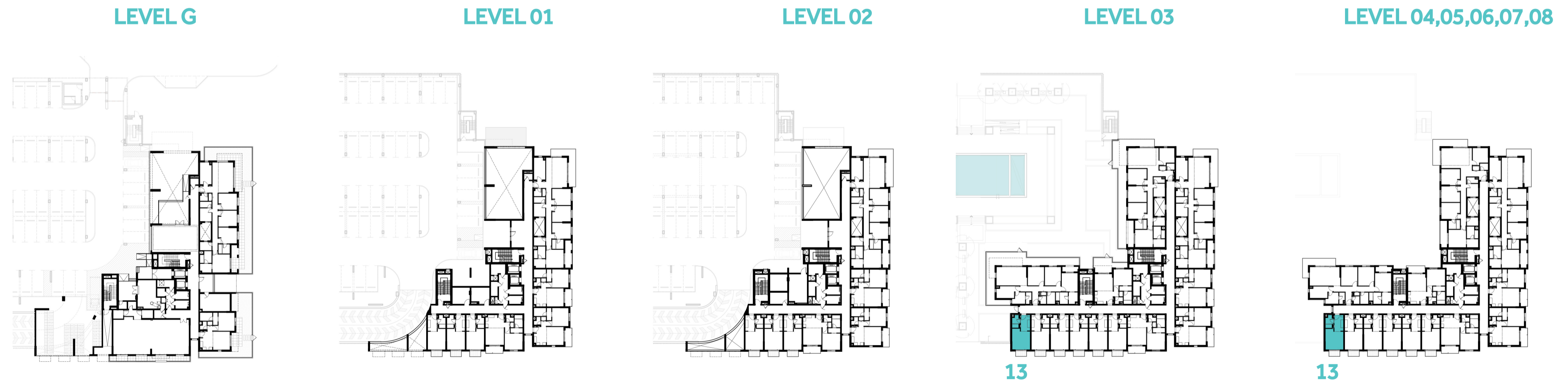
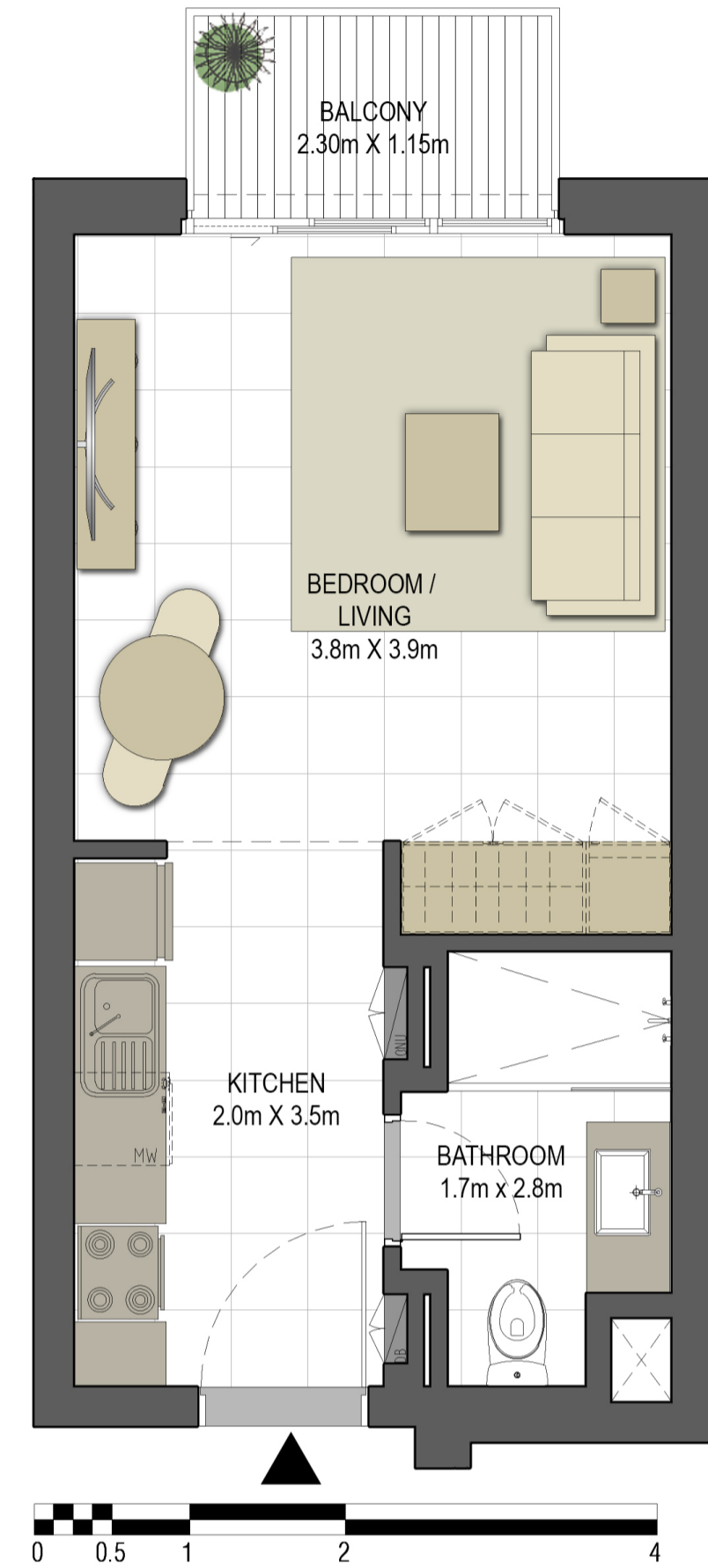


جواهر

JAWAHER RESIDENCES TWO

BUILDING	JAWAHER TWO
STUDIO	TYPE ST-A1
UNIT NO.	313, 413, 513, 613, 713, 813
SUITE AREA	33.26 m ² / 358.01 ft ²
BALCONY AREA	2.88 m ² / 31.00 ft ²
TOTAL AREA	36.14 m ² / 389.01 ft ²



Disclaimer:

1. All room dimensions are measured to structural elements and exclude all finishes and construction tolerances. 2. All dimensions have been provided by our consultant architects. 3. All materials, dimensions and drawings are approximate. Information is subject to change without notice. 4. Actual suite area may vary from the stated area. Drawings not to scale. The developer reserves the right to make revisions. 5. Calculation of suite area is measured as the area bounded by the centre line of the demising or partition walls separating one unit from another unit, the exterior face of all exterior walls, and the exterior face of the corridor wall enclosing the adjoining unit. 6. Calculation of balcony area is measured as the area bounded by the centre line of the demising or partition walls separating one unit from another unit, the outmost face of the enclosing guard and the external face of the unit adjoining the balcony. 7. The units are measured at typical floor in the building. Columns may vary in size depending on the floor level.

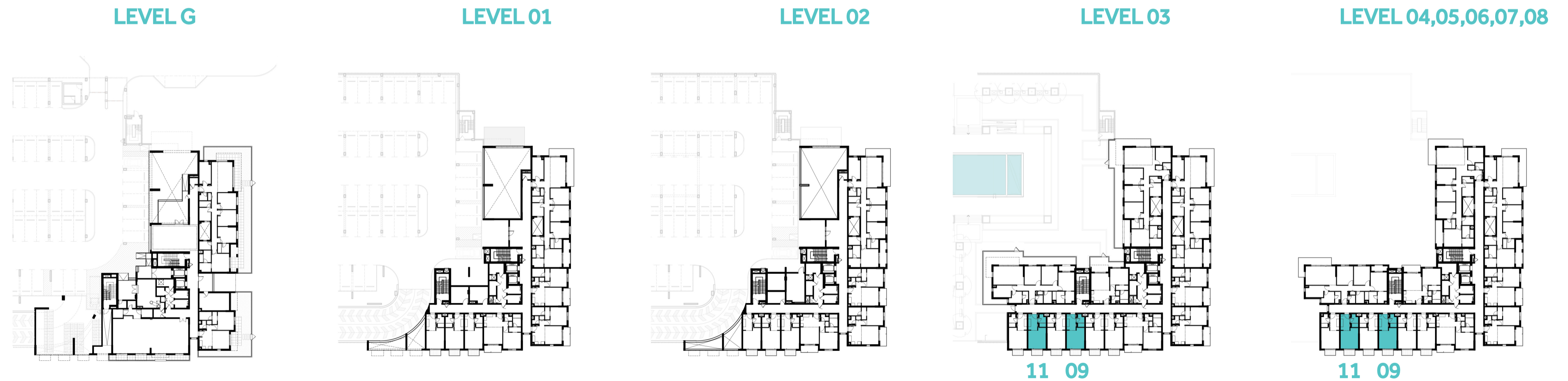
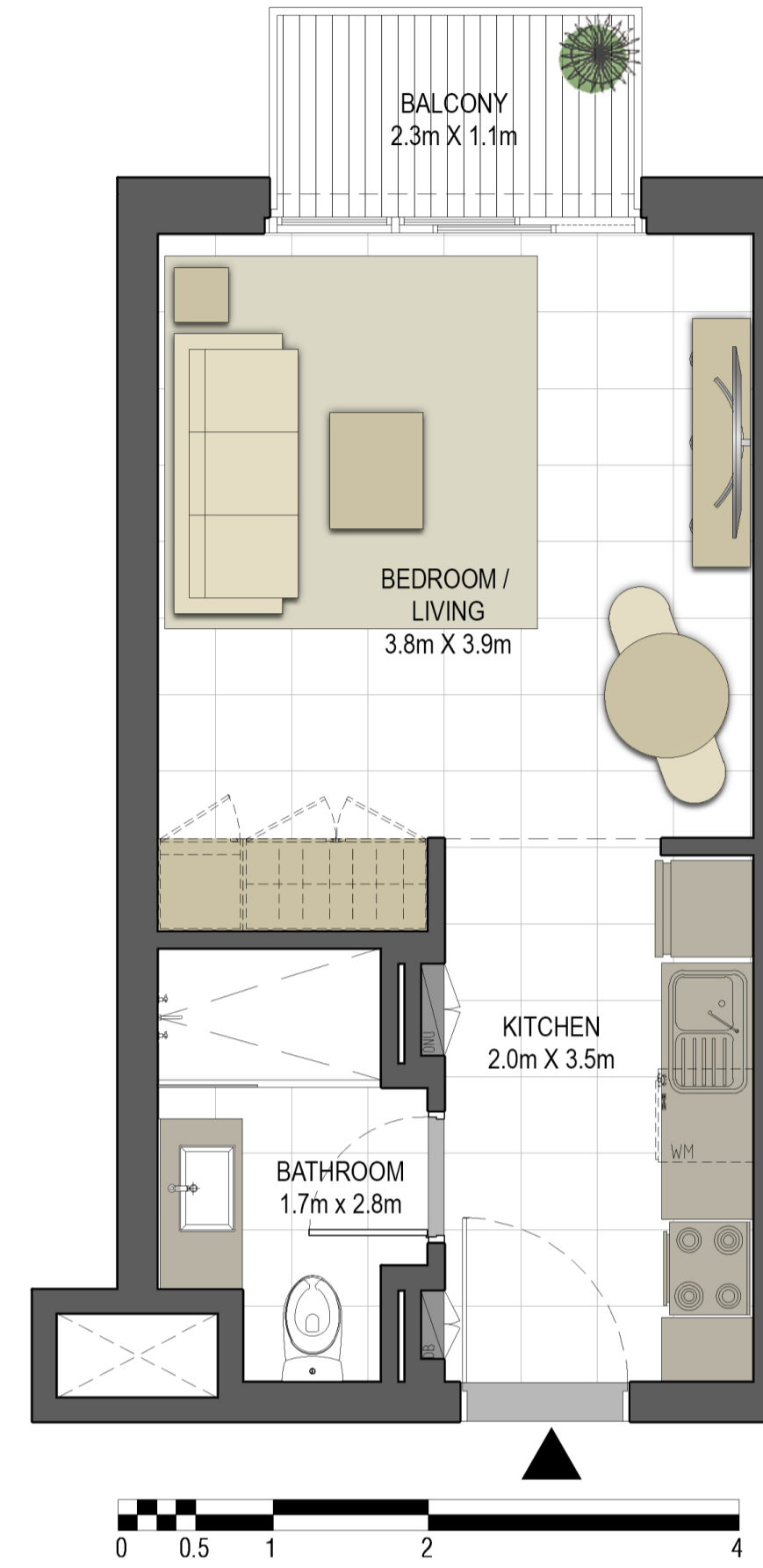


جزيرة مريم
MARYAM ISLAND

جواهر

JAWAHER RESIDENCES TWO

BUILDING	JAWAHER TWO
STUDIO	TYPE ST-A2
UNIT NO.	309, 311, 409, 411, 509, 511, 609, 611, 709, 711, 809, 811
SUITE AREA	32.19 m ² / 346.49 ft ²
BALCONY AREA	2.88 m ² / 31.00 ft ²
TOTAL AREA	35.07 m ² / 377.49 ft ²



جزيرة مريم
MARYAM ISLAND

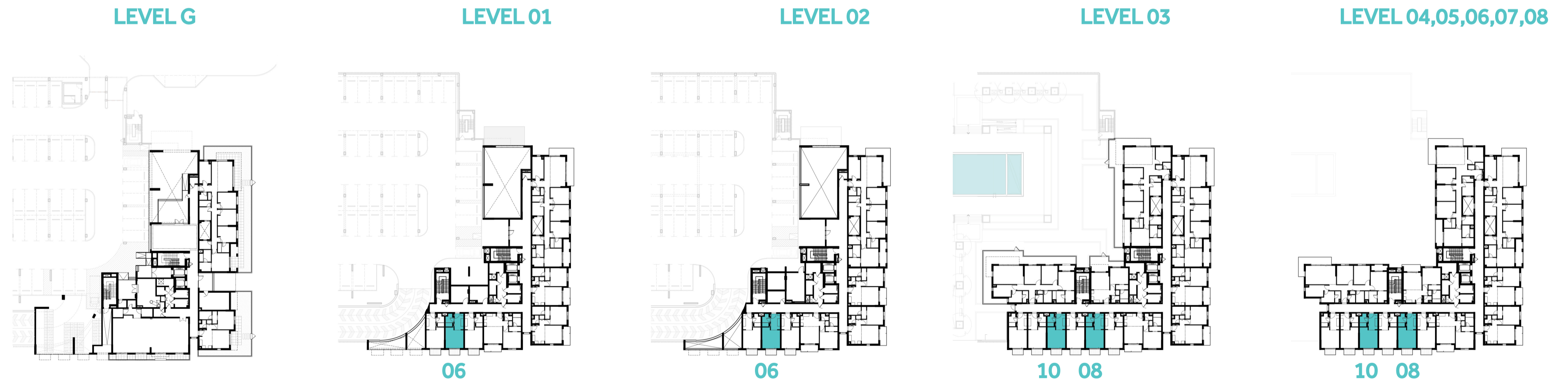
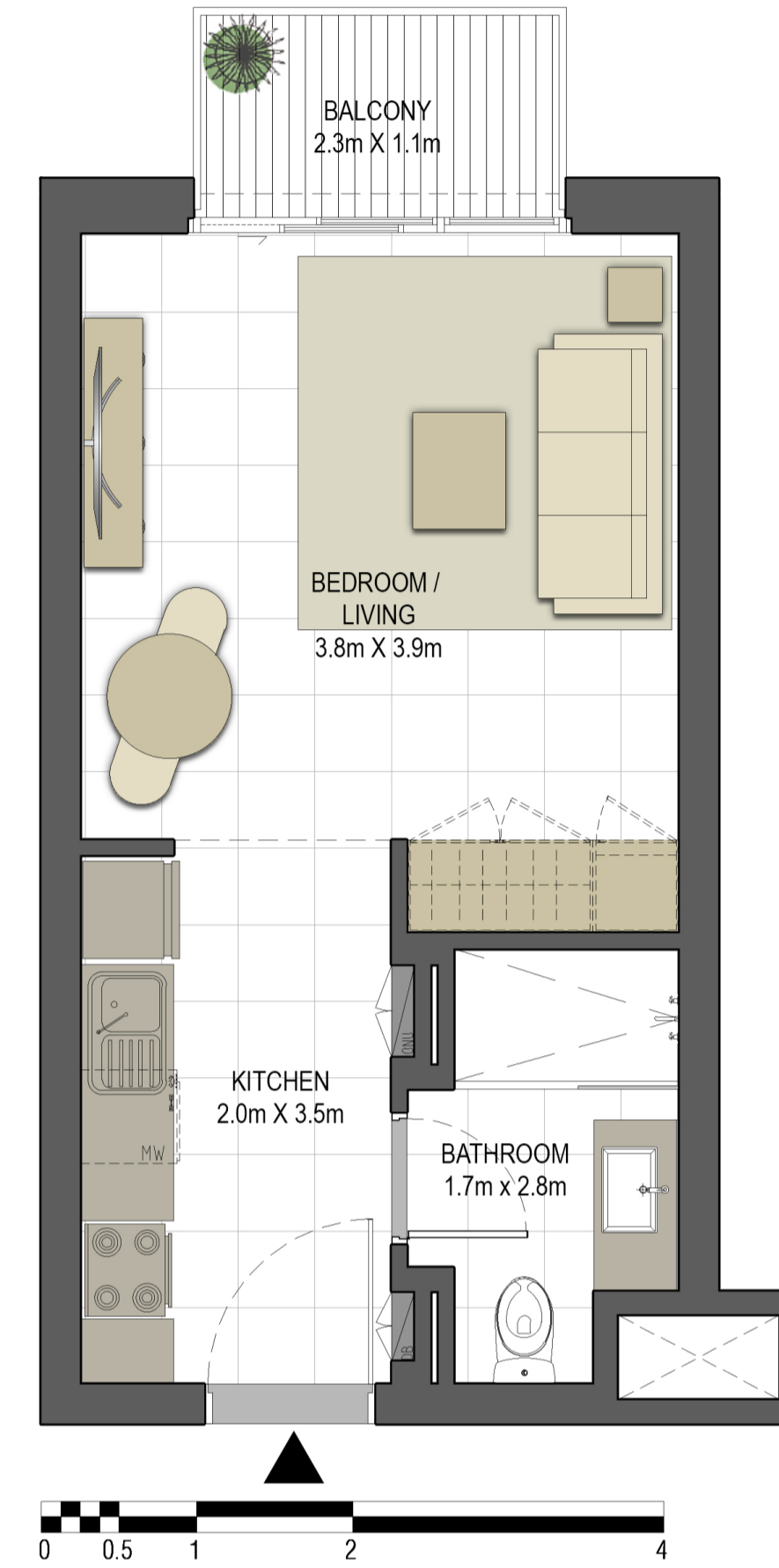
Disclaimer:

1. All room dimensions are measured to structural elements and exclude all finishes and construction tolerances. 2. All dimensions have been provided by our consultant architects. 3. All materials, dimensions and drawings are approximate. Information is subject to change without notice. 4. Actual suite area may vary from the stated area. Drawings not to scale. The developer reserves the right to make revisions. 5. Calculation of suite area is measured as the area bounded by the centre line of the demising or partition walls separating one unit from another unit, the exterior face of all exterior walls, and the exterior face of the corridor wall enclosing the adjoining unit. 6. Calculation of balcony area is measured as the area bounded by the centre line of the demising or partition walls separating one unit from another unit, the outmost face of the enclosing guard and the external face of the unit adjoining the balcony. 7. The units are measured at typical floor in the building. Columns may vary in size depending on the floor level.

جواهر

JAWAHER RESIDENCES TWO

BUILDING	JAWAHER TWO
STUDIO	TYPE ST-A3
UNIT NO.	106, 206, 308, 310, 408, 410, 508, 510, 608, 610, 708, 710, 808, 810
SUITE AREA	32.19 m ² / 346.49 ft ²
BALCONY AREA	2.88 m ² / 31.00 ft ²
TOTAL AREA	35.07 m ² / 377.49 ft ²



جزيرة مريم
MARYAM ISLAND

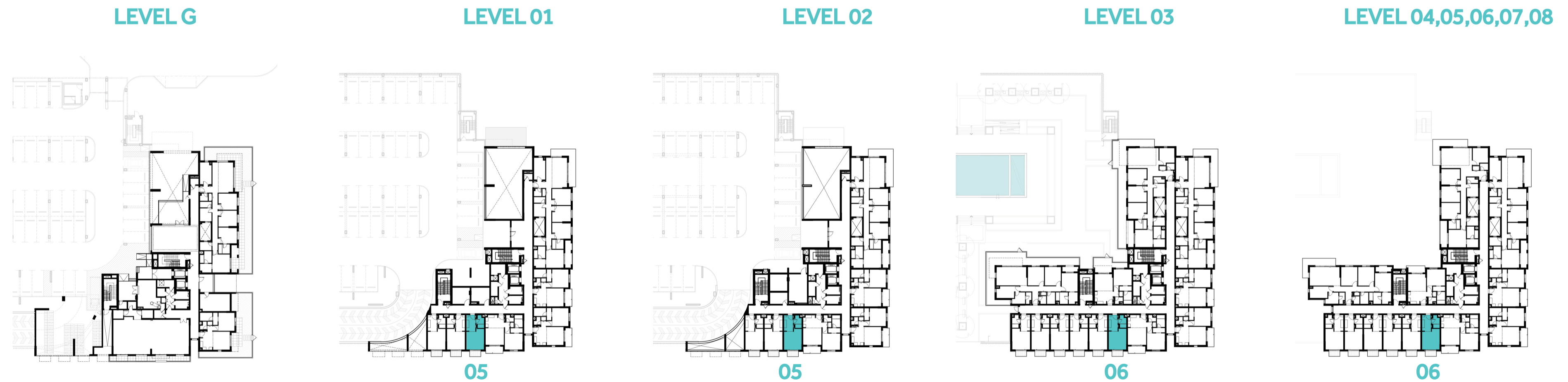
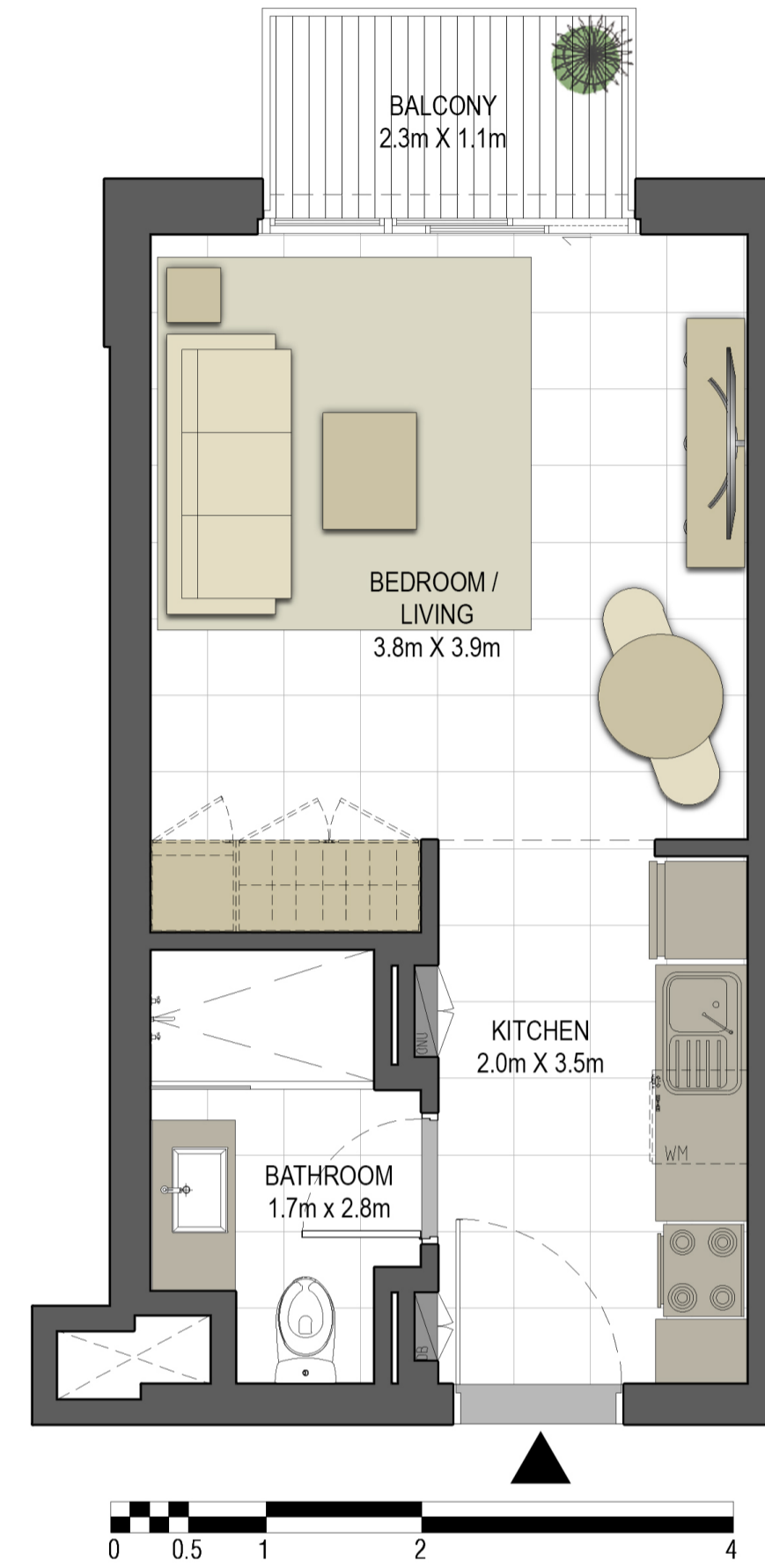
Disclaimer:

1. All room dimensions are measured to structural elements and exclude all finishes and construction tolerances. 2. All dimensions have been provided by our consultant architects. 3. All materials, dimensions and drawings are approximate. Information is subject to change without notice. 4. Actual suite area may vary from the stated area. Drawings not to scale. The developer reserves the right to make revisions. 5. Calculation of suite area is measured as the area bounded by the centre line of the demising or partition walls separating one unit from another unit, the exterior face of all exterior walls, and the exterior face of the corridor wall enclosing the adjoining unit. 6. Calculation of balcony area is measured as the area bounded by the centre line of the demising or partition walls separating one unit from another unit, the outmost face of the enclosing guard and the external face of the unit adjoining the balcony. 7. The units are measured at typical floor in the building. Columns may vary in size depending on the floor level.

جواهر

JAWAHER RESIDENCES TWO

BUILDING	JAWAHER TWO
STUDIO	TYPE ST-A4
UNIT NO.	105, 205, 306, 406, 506, 606, 706, 806
SUITE AREA	32.31 m ² / 374.78 ft ²
BALCONY AREA	2.88 m ² / 31.00 ft ²
TOTAL AREA	35.19 m ² / 378.78 ft ²



Disclaimer:

1. All room dimensions are measured to structural elements and exclude all finishes and construction tolerances. 2. All dimensions have been provided by our consultant architects. 3. All materials, dimensions and drawings are approximate. Information is subject to change without notice. 4. Actual suite area may vary from the stated area. Drawings not to scale. The developer reserves the right to make revisions. 5. Calculation of suite area is measured as the area bounded by the centre line of the demising or partition walls separating one unit from another unit, the exterior face of all exterior walls, and the exterior face of the corridor wall enclosing the adjoining unit. 6. Calculation of balcony area is measured as the area bounded by the centre line of the demising or partition walls separating one unit from another unit, the outmost face of the enclosing guard and the external face of the unit adjoining the balcony. 7. The units are measured at typical floor in the building. Columns may vary in size depending on the floor level.

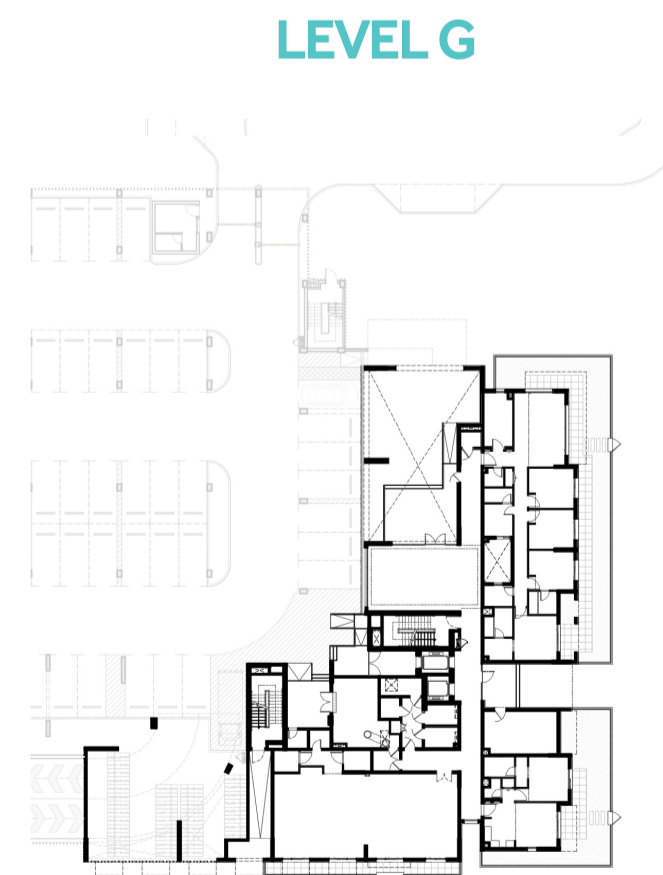
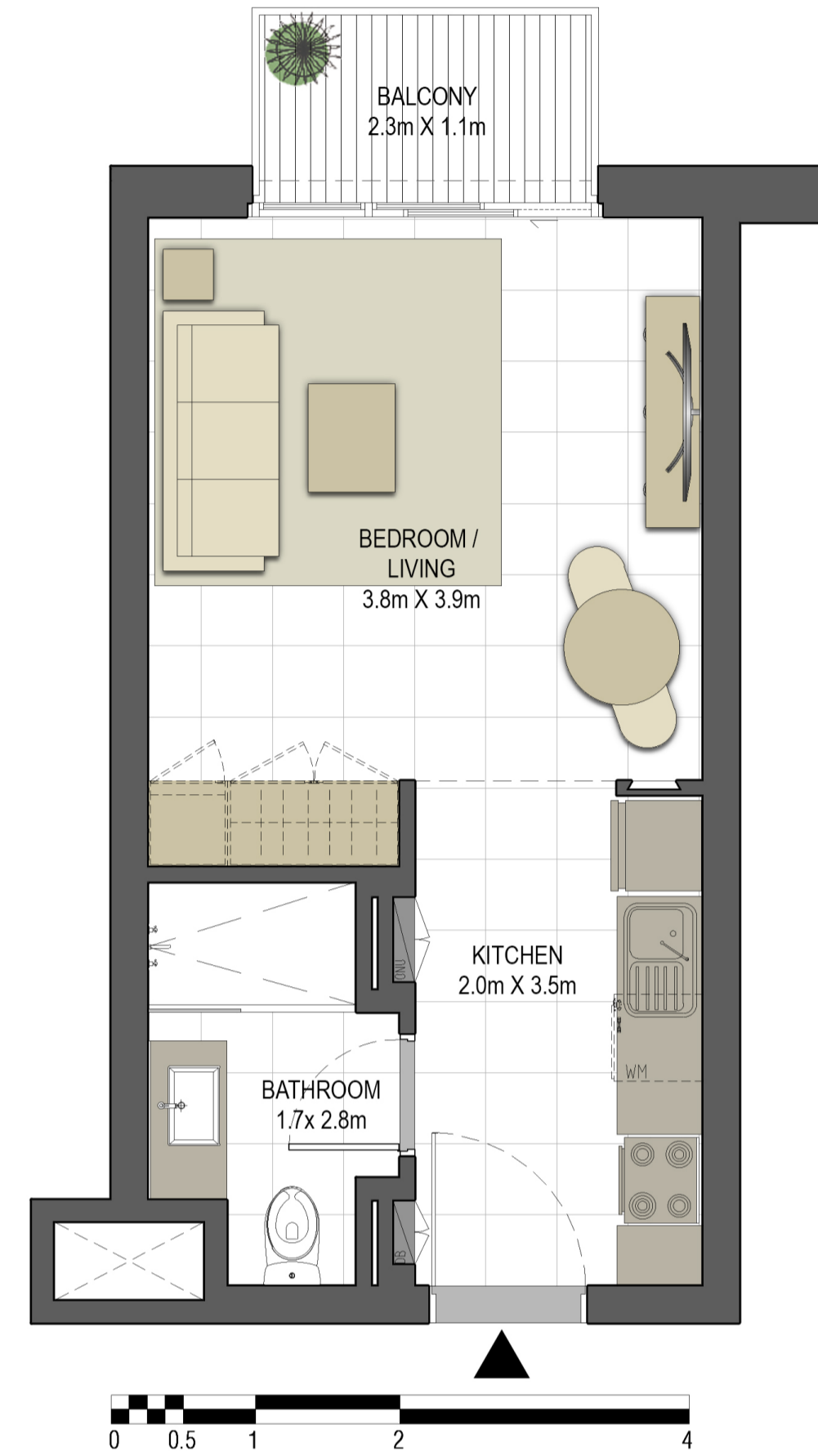


جزيرة مريم
MARYAM ISLAND

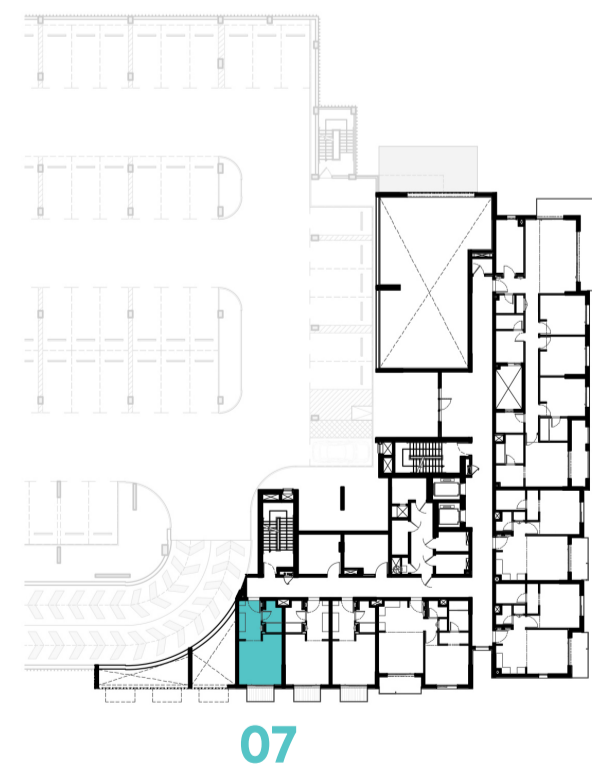
جواهر

JAWAHER RESIDENCES TWO

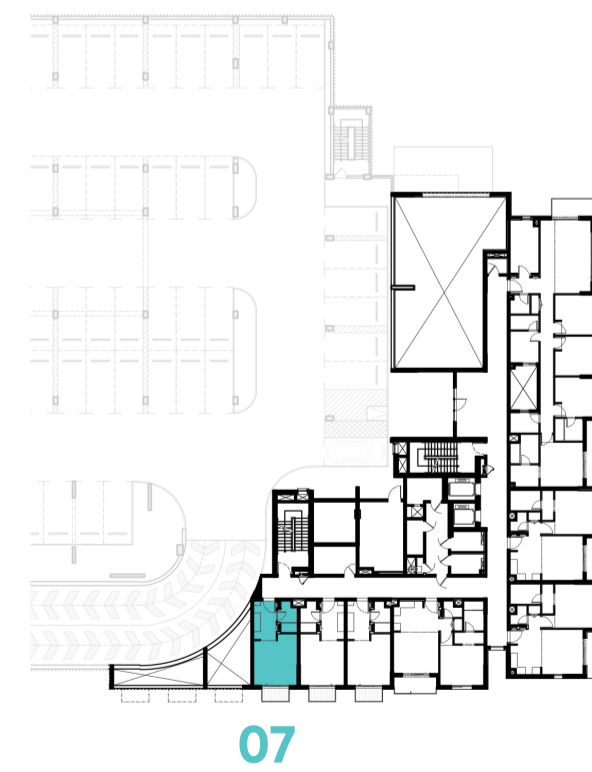
BUILDING	JAWAHER TWO
STUDIO	TYPE ST-A5
UNIT NO.	107, 207
SUITE AREA	33.17 m ² / 357.04 ft ²
BALCONY AREA	2.88 m ² / 31.00 ft ²
TOTAL AREA	36.05 m ² / 388.04 ft ²



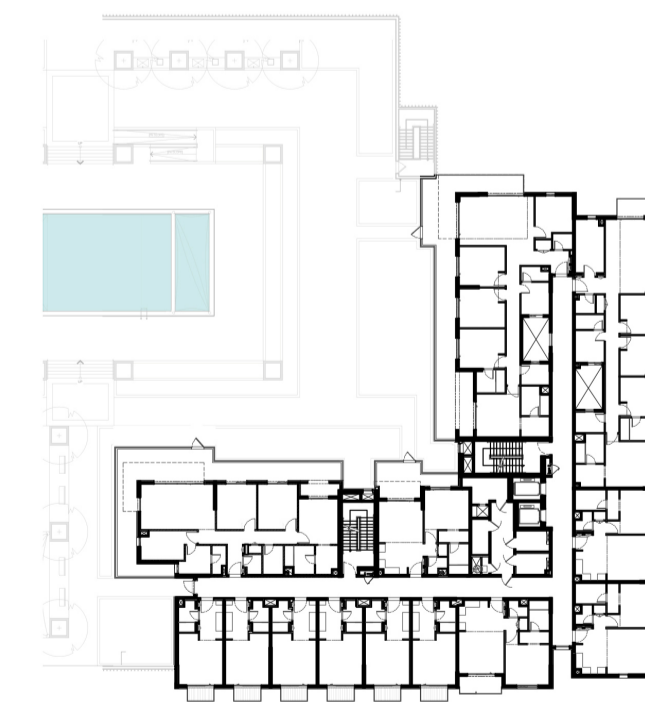
LEVEL G



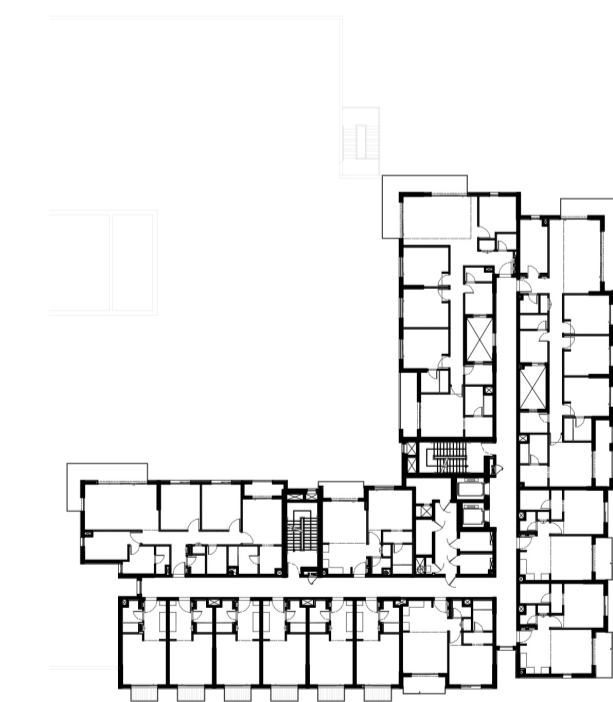
LEVEL 01



LEVEL 02



LEVEL 03



LEVEL 04,05,06,07,08



جزيرة مريم
MARYAM ISLAND

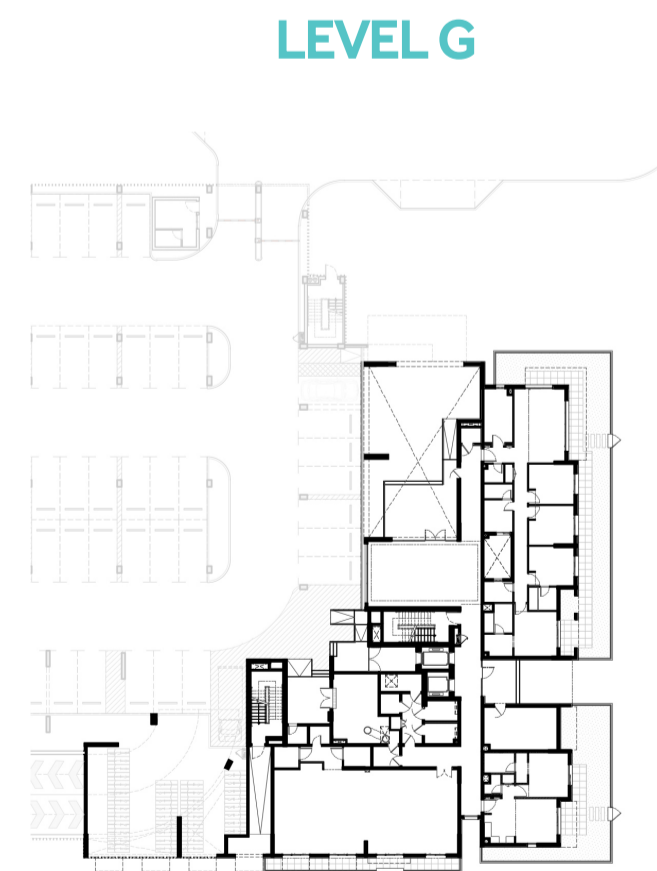
Disclaimer:

1. All room dimensions are measured to structural elements and exclude all finishes and construction tolerances. 2. All dimensions have been provided by our consultant architects. 3. All materials, dimensions and drawings are approximate. Information is subject to change without notice. 4. Actual suite area may vary from the stated area. Drawings not to scale. The developer reserves the right to make revisions. 5. Calculation of suite area is measured as the area bounded by the centre line of the demising or partition walls separating one unit from another unit, the exterior face of all exterior walls, and the exterior face of the corridor wall enclosing the adjoining unit. 6. Calculation of balcony area is measured as the area bounded by the centre line of the demising or partition walls separating one unit from another unit, the outmost face of the enclosing guard and the external face of the unit adjoining the balcony. 7. The units are measured at typical floor in the building. Columns may vary in size depending on the floor level.

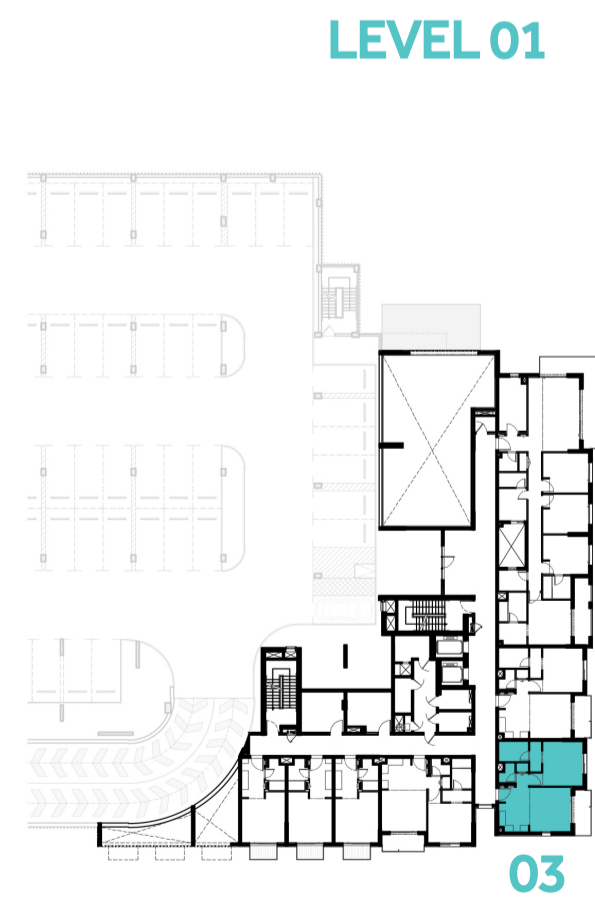
جواهر

JAWAHER RESIDENCES TWO

BUILDING	JAWAHER TWO
1 BEDROOM	TYPE 1A-1
UNIT NO.	103, 203, 304, 404, 504, 604, 704, 804
SUITE AREA	61.56 m ² / 662.63 ft ²
BALCONY AREA	5.91 m ² / 63.61 ft ²
TOTAL AREA	67.47 m ² / 726.24 ft ²

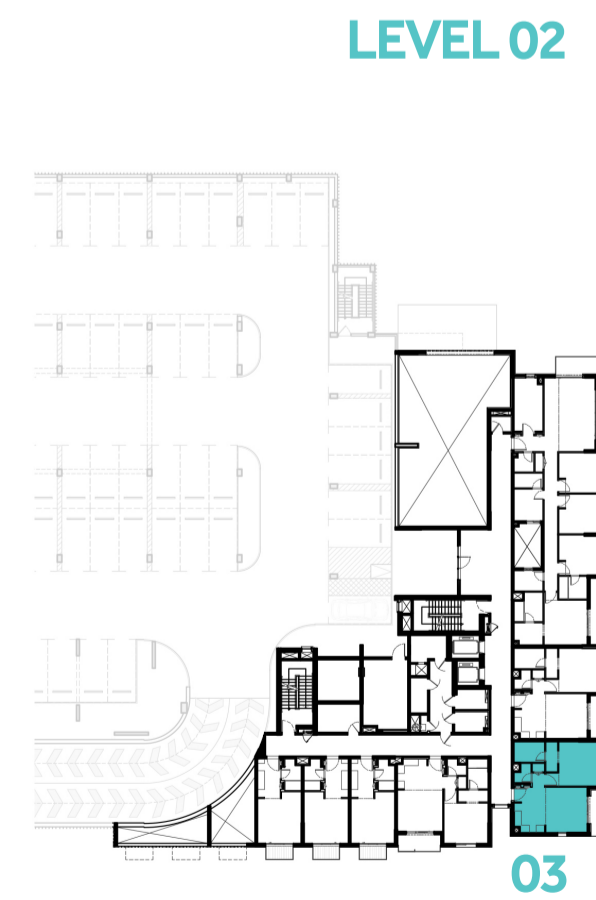


LEVEL G



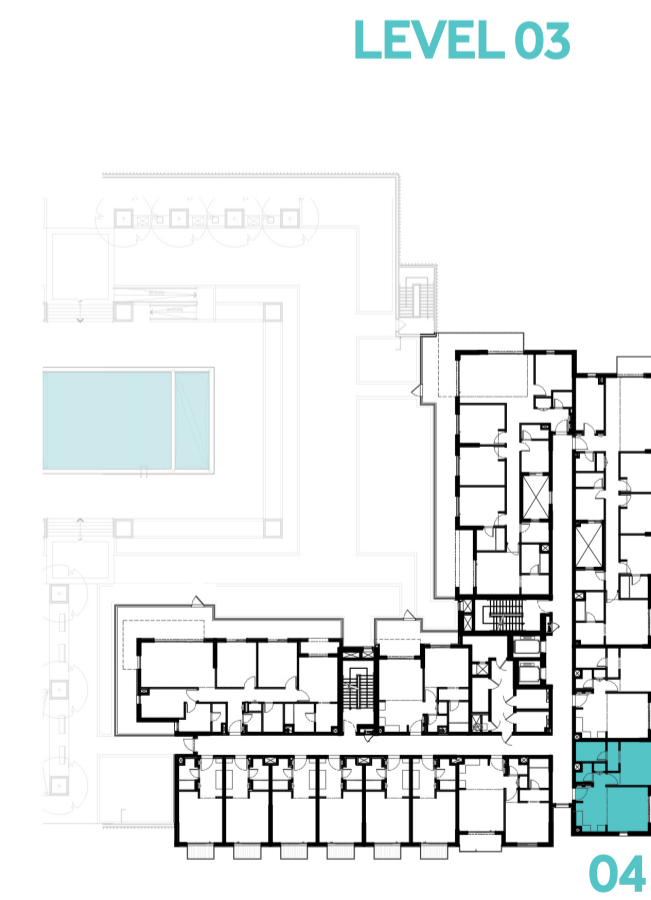
LEVEL 01

03



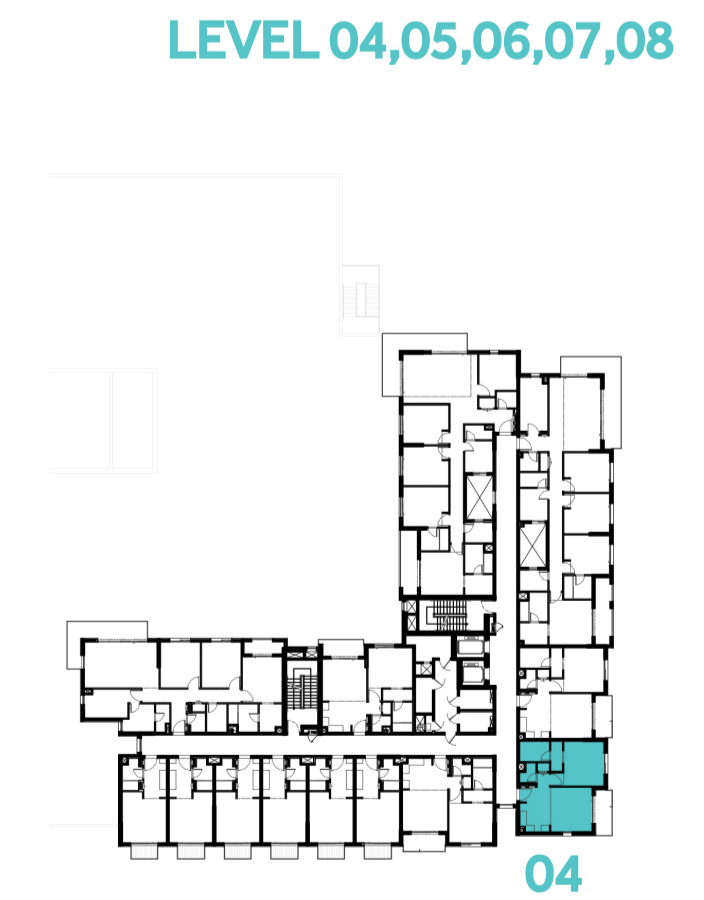
LEVEL 02

03



LEVEL 03

04



LEVEL 04,05,06,07,08

04



Disclaimer:

1. All room dimensions are measured to structural elements and exclude all finishes and construction tolerances. 2. All dimensions have been provided by our consultant architects. 3. All materials, dimensions and drawings are approximate. Information is subject to change without notice. 4. Actual suite area may vary from the stated area. Drawings not to scale. The developer reserves the right to make revisions. 5. Calculation of suite area is measured as the area bounded by the centre line of the demising or partition walls separating one unit from another unit, the exterior face of all exterior walls, and the exterior face of the corridor wall enclosing the adjoining unit. 6. Calculation of balcony area is measured as the area bounded by the centre line of the demising or partition walls separating one unit from another unit, the outmost face of the enclosing guard and the external face of the unit adjoining the balcony. 7. The units are measured at typical floor in the building. Columns may vary in size depending on the floor level.

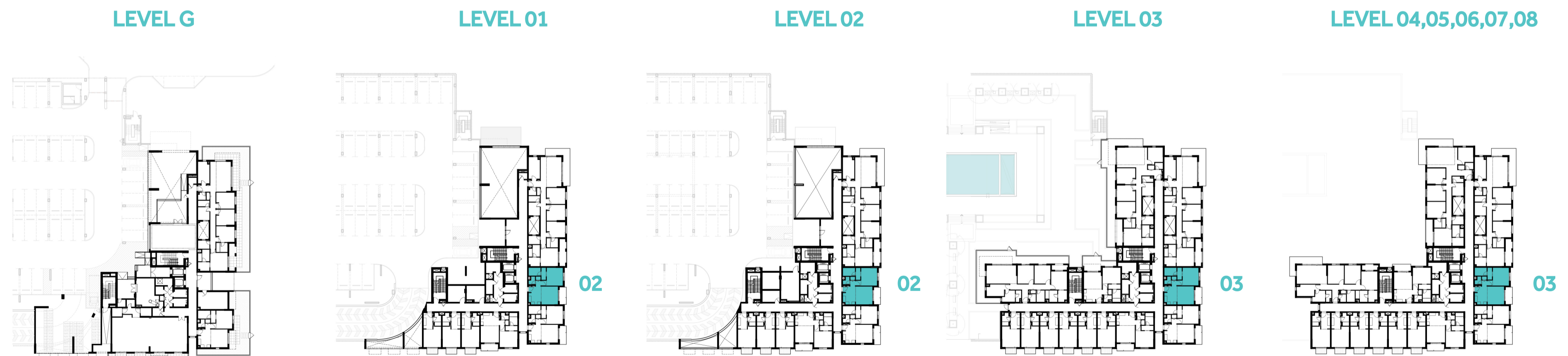


جزيرة مريم
MARYAM ISLAND

جواهر

JAWAHER RESIDENCES TWO

BUILDING	JAWAHER TWO
1 BEDROOM	TYPE 1A-2
UNIT NO.	102, 202, 303, 403, 503, 603, 703, 803
SUITE AREA	60.57 m ² / 651.97 ft ²
BALCONY AREA	5.55 m ² / 59.74 ft ²
TOTAL AREA	66.12 m ² / 711.71 ft ²



جزيرة مريم
MARYAM ISLAND

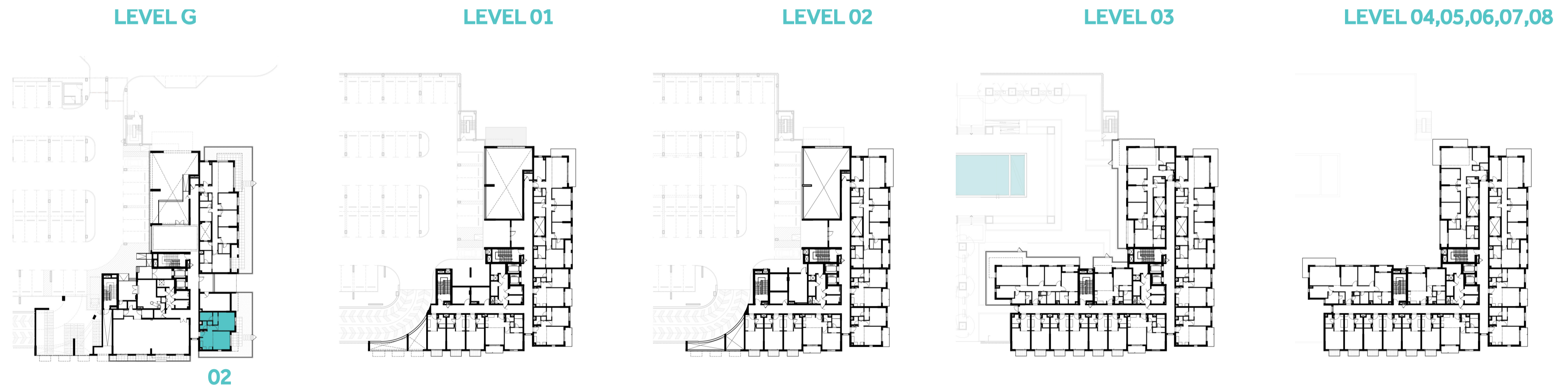
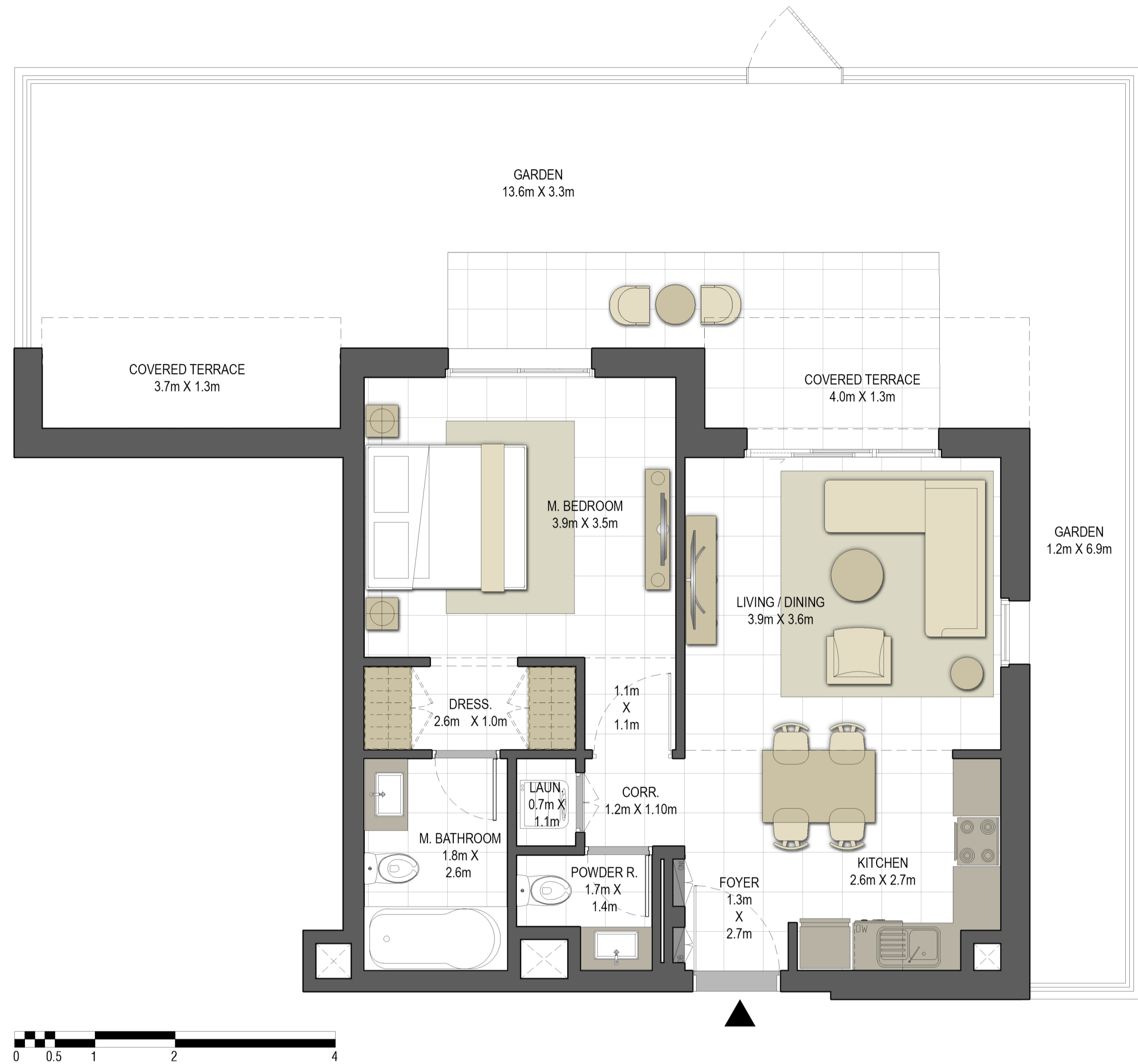
Disclaimer:

1. All room dimensions are measured to structural elements and exclude all finishes and construction tolerances. 2. All dimensions have been provided by our consultant architects. 3. All materials, dimensions and drawings are approximate. Information is subject to change without notice. 4. Actual suite area may vary from the stated area. Drawings not to scale. The developer reserves the right to make revisions. 5. Calculation of suite area is measured as the area bounded by the centre line of the demising or partition walls separating one unit from another unit, the exterior face of all exterior walls, and the exterior face of the corridor wall enclosing the adjoining unit. 6. Calculation of balcony area is measured as the area bounded by the centre line of the demising or partition walls separating one unit from another unit, the outmost face of the enclosing guard and the external face of the unit adjoining the balcony. 7. The units are measured at typical floor in the building. Columns may vary in size depending on the floor level.

جواهر

JAWAHER RESIDENCES TWO

BUILDING	JAWAHER TWO
1 BEDROOM	TYPE 1A-3
UNIT NO.	002
SUITE AREA	62.05 m ² / 667.90 ft ²
COVERED TERRACE AREA	11.13 m ² / 119.80 ft ²
TOTAL AREA	73.18 m ² / 787.70 ft ²
GARDEN AREA	57.40 m ² / 617.85 ft ²



جزيرة مريم
MARYAM ISLAND

Disclaimer:

1. All room dimensions are measured to structural elements and exclude all finishes and construction tolerances. 2. All dimensions have been provided by our consultant architects. 3. All materials, dimensions and drawings are approximate. Information is subject to change without notice. 4. Actual suite area may vary from the stated area. Drawings not to scale. The developer reserves the right to make revisions. 5. Calculation of suite area is measured as the area bounded by the centre line of the demising or partition walls separating one unit from another unit, the exterior face of all exterior walls, and the exterior face of the corridor wall enclosing the adjoining unit. 6. Calculation of balcony area is measured as the area bounded by the centre line of the demising or partition walls separating one unit from another unit, the outmost face of the enclosing guard and the external face of the unit adjoining the balcony. 7. The units are measured at typical floor in the building. Columns may vary in size depending on the floor level.

جواهر

JAWAHER RESIDENCES TWO

BUILDING	JAWAHER TWO
1 BEDROOM	TYPE 1B-1
UNIT NO.	104, 204, 305, 405, 505, 605, 705, 805
SUITE AREA	61.21 m ² / 658.86 ft ²
BALCONY AREA	5.68 m ² / 61.14 ft ²
TOTAL AREA	66.89 m ² / 720.00 ft ²



جزيرة مريم
MARYAM ISLAND

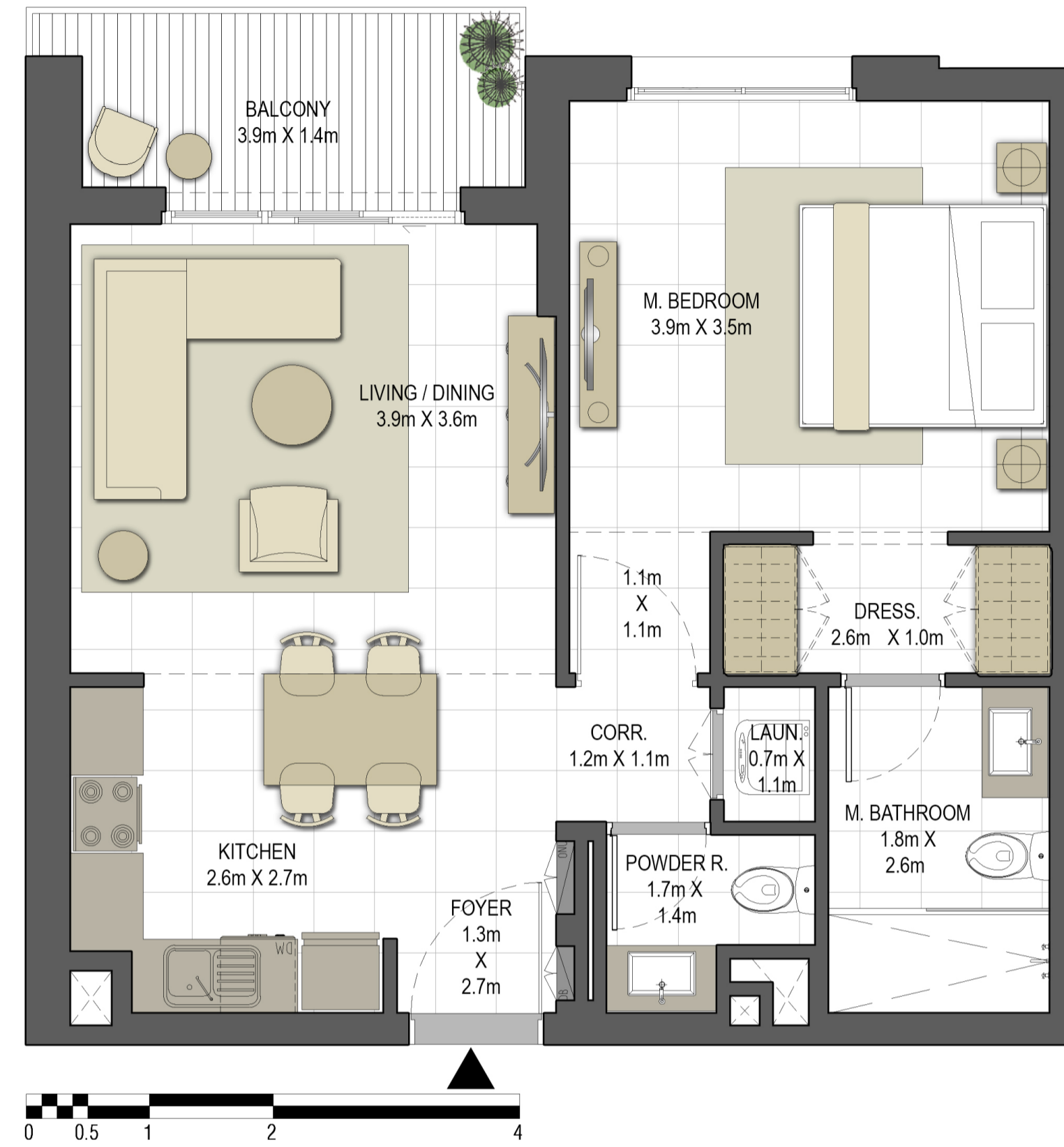
Disclaimer:

1. All room dimensions are measured to structural elements and exclude all finishes and construction tolerances. 2. All dimensions have been provided by our consultant architects. 3. All materials, dimensions and drawings are approximate. Information is subject to change without notice. 4. Actual suite area may vary from the stated area. Drawings not to scale. The developer reserves the right to make revisions. 5. Calculation of suite area is measured as the area bounded by the centre line of the demising or partition walls separating one unit from another unit, the exterior face of all exterior walls, and the exterior face of the corridor wall enclosing the adjoining unit. 6. Calculation of balcony area is measured as the area bounded by the centre line of the demising or partition walls separating one unit from another unit, the outmost face of the enclosing guard and the external face of the unit adjoining the balcony. 7. The units are measured at typical floor in the building. Columns may vary in size depending on the floor level.

جواهر

JAWAHER RESIDENCES TWO

BUILDING	JAWAHER TWO
1 BEDROOM	TYPE 1B-2
UNIT NO.	407, 507, 607, 707, 807
SUITE AREA	61.41 m ² / 661.01 ft ²
BALCONY AREA	5.54 m ² / 59.63 ft ²
TOTAL AREA	66.95 m ² / 720.64 ft ²



Disclaimer:

1. All room dimensions are measured to structural elements and exclude all finishes and construction tolerances. 2. All dimensions have been provided by our consultant architects. 3. All materials, dimensions and drawings are approximate. Information is subject to change without notice. 4. Actual suite area may vary from the stated area. Drawings not to scale. The developer reserves the right to make revisions. 5. Calculation of suite area is measured as the area bounded by the centre line of the demising or partition walls separating one unit from another unit, the exterior face of all exterior walls, and the exterior face of the corridor wall enclosing the adjoining unit. 6. Calculation of balcony area is measured as the area bounded by the centre line of the demising or partition walls separating one unit from another unit, the outmost face of the enclosing guard and the external face of the unit adjoining the balcony. 7. The units are measured at typical floor in the building. Columns may vary in size depending on the floor level.

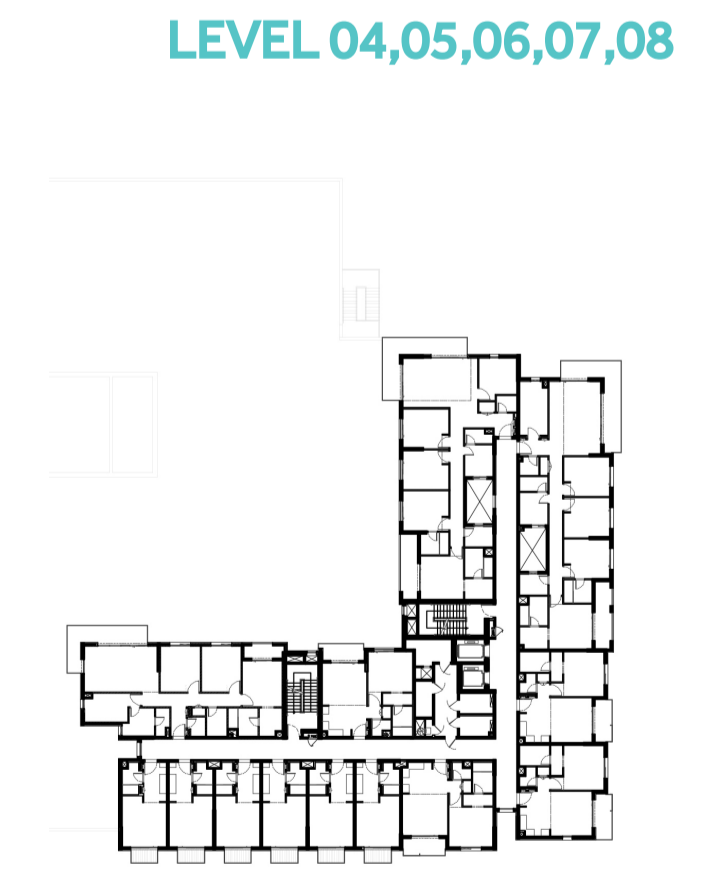
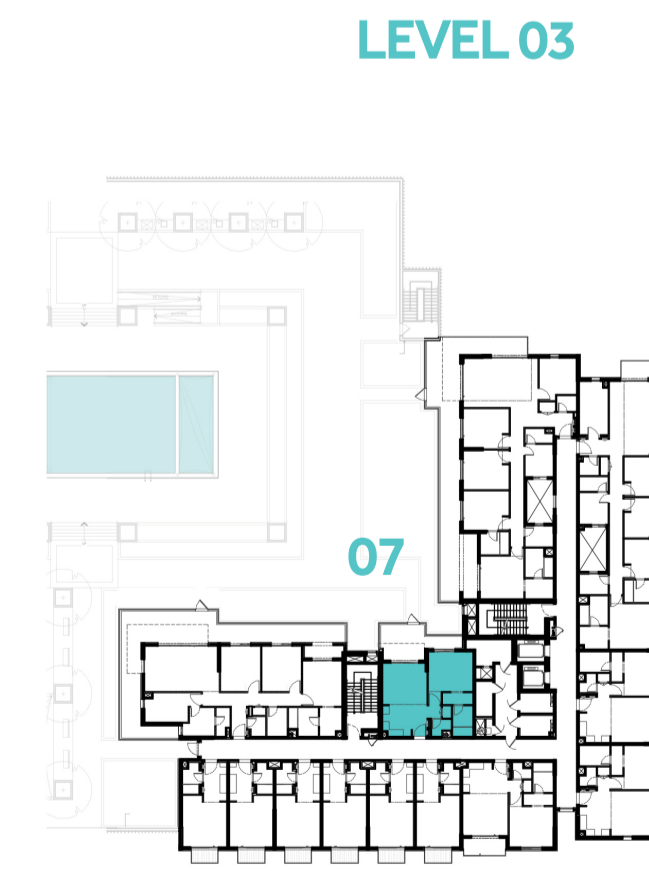
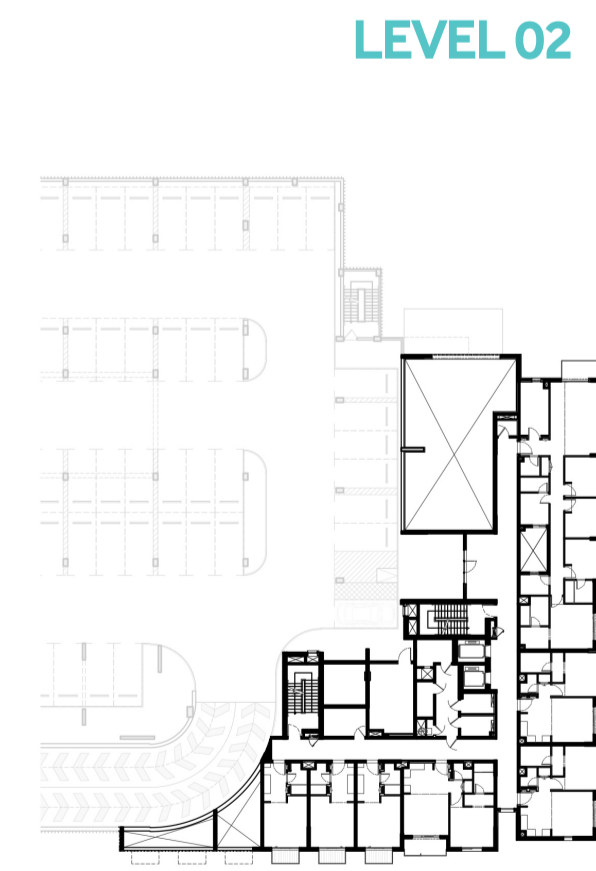
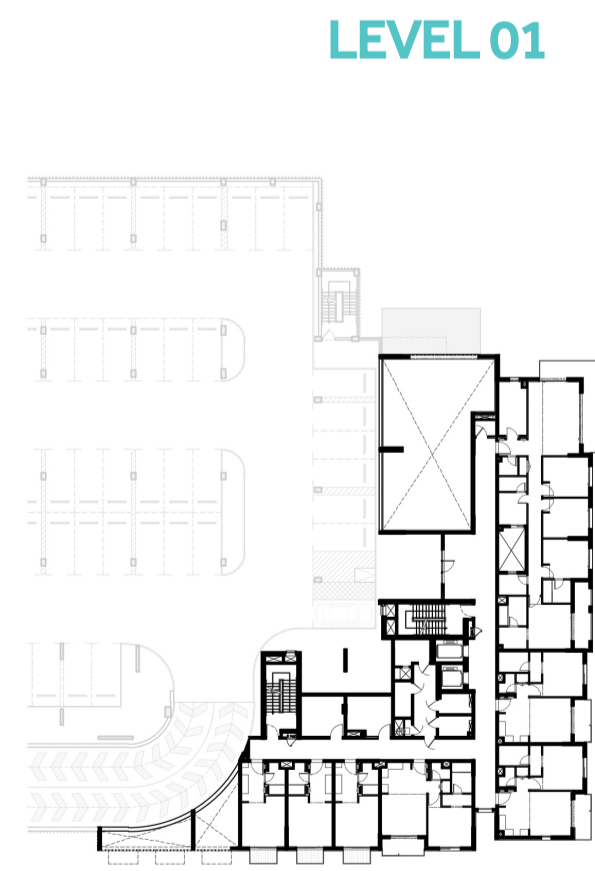
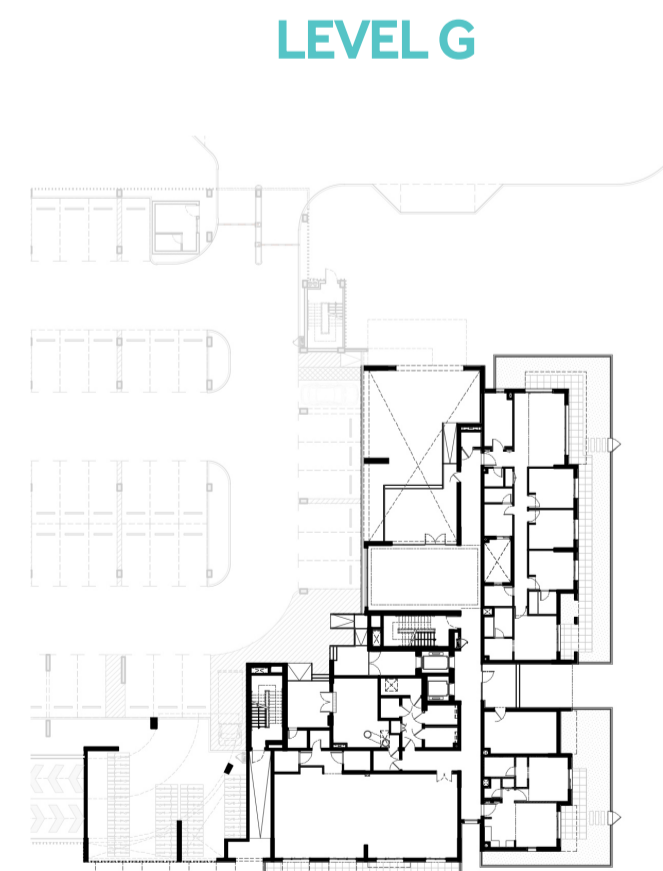


جزيرة مريم
MARYAM ISLAND

جواهر

JAWAHER RESIDENCES TWO

BUILDING	JAWAHER TWO
1 BEDROOM	TYPE 1B-3
UNIT NO.	307
SUITE AREA	61.41 m ² / 661.01 ft ²
COVERED TERRACE AREA	5.54 m ² / 59.63 ft ²
TOTAL AREA	66.95 m ² / 720.64 ft ²
TERRACE AREA	11.66 m ² / 125.51 ft ²



جزيرة مريم
MARYAM ISLAND

Disclaimer:

1. All room dimensions are measured to structural elements and exclude all finishes and construction tolerances. 2. All dimensions have been provided by our consultant architects. 3. All materials, dimensions and drawings are approximate. Information is subject to change without notice. 4. Actual suite area may vary from the stated area. Drawings not to scale. The developer reserves the right to make revisions. 5. Calculation of suite area is measured as the area bounded by the centre line of the demising or partition walls separating one unit from another unit, the exterior face of all exterior walls, and the exterior face of the corridor wall enclosing the adjoining unit. 6. Calculation of balcony area is measured as the area bounded by the centre line of the demising or partition walls separating one unit from another unit, the outmost face of the enclosing guard and the external face of the unit adjoining the balcony. 7. The units are measured at typical floor in the building. Columns may vary in size depending on the floor level.

جواهر

JAWAHER RESIDENCES TWO

BUILDING	JAWAHER TWO
3 BEDROOM + MAID	TYPE 3A-1
UNIT NO.	412, 512, 612, 712, 812
SUITE AREA	140.20 m ² / 1509.10 ft ²
BALCONY AREA	18.55 m ² / 199.67 ft ²
TOTAL AREA	158.75 m ² / 1708.77 ft ²



Disclaimer:

1. All room dimensions are measured to structural elements and exclude all finishes and construction tolerances. 2. All dimensions have been provided by our consultant architects. 3. All materials, dimensions and drawings are approximate. Information is subject to change without notice. 4. Actual suite area may vary from the stated area. Drawings not to scale. The developer reserves the right to make revisions. 5. Calculation of suite area is measured as the area bounded by the centre line of the demising or partition walls separating one unit from another unit, the exterior face of all exterior walls, and the exterior face of the corridor wall enclosing the adjoining unit. 6. Calculation of balcony area is measured as the area bounded by the centre line of the demising or partition walls separating one unit from another unit, the outmost face of the enclosing guard and the external face of the unit adjoining the balcony. 7. The units are measured at typical floor in the building. Columns may vary in size depending on the floor level.



جزيرة مريم
MARYAM ISLAND

جواهر

JAWAHER RESIDENCES TWO

BUILDING	JAWAHER TWO
3 BEDROOM + MAID	TYPE 3A-2
UNIT NO.	312
SUITE AREA	140.20 m ² / 1509.10 ft ²
COVERED TERRACE AREA	18.73 m ² / 201.61 ft ²
TOTAL AREA	158.93 m ² / 1710.71 ft ²
TERRACE AREA	51.55 m ² / 554.88 ft ²



Disclaimer:

1. All room dimensions are measured to structural elements and exclude all finishes and construction tolerances. 2. All dimensions have been provided by our consultant architects. 3. All materials, dimensions and drawings are approximate. Information is subject to change without notice. 4. Actual suite area may vary from the stated area. Drawings not to scale. The developer reserves the right to make revisions. 5. Calculation of suite area is measured as the area bounded by the centre line of the demising or partition walls separating one unit from another unit, the exterior face of all exterior walls, and the exterior face of the corridor wall enclosing the adjoining unit. 6. Calculation of balcony area is measured as the area bounded by the centre line of the demising or partition walls separating one unit from another unit, the outmost face of the enclosing guard and the external face of the unit adjoining the balcony. 7. The units are measured at typical floor in the building. Columns may vary in size depending on the floor level.

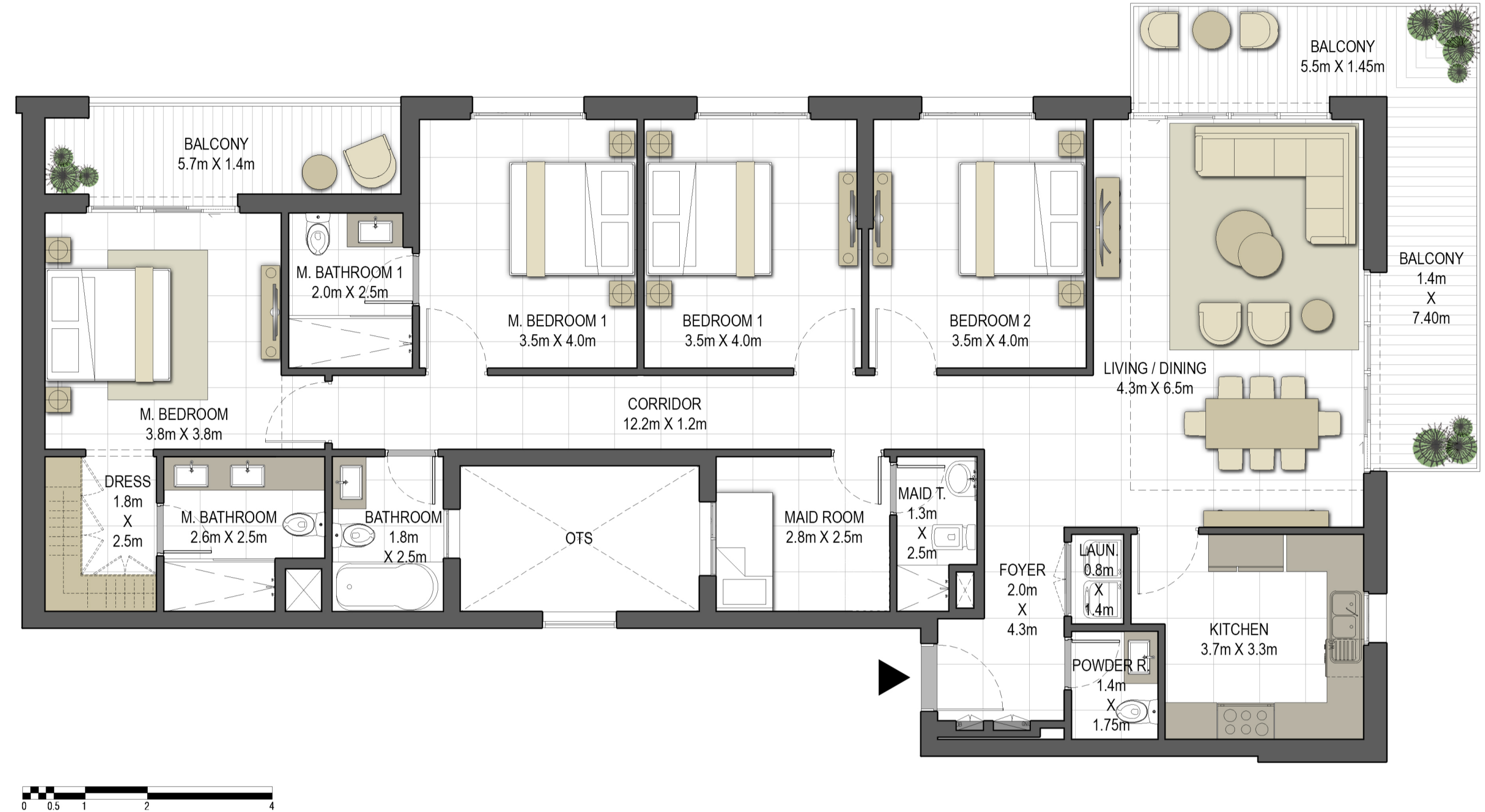


جزيرة مريم
MARYAM ISLAND

جواهر

JAWAHER RESIDENCES TWO

BUILDING	JAWAHER TWO
4 BEDROOM + MAID	TYPE 4A-1
UNIT NO.	402, 502, 602, 702, 802
SUITE AREA	175.84 m ² / 1892.72 ft ²
BALCONY AREA	26.33 m ² / 283.41 ft ²
TOTAL AREA	202.17 m ² / 2176.14 ft ²



جزيرة مريم
MARYAM ISLAND

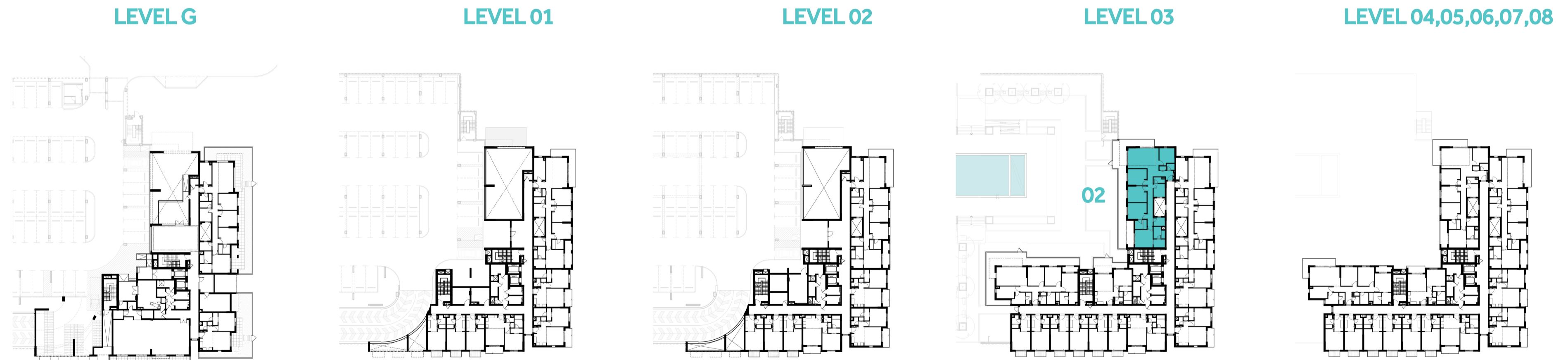
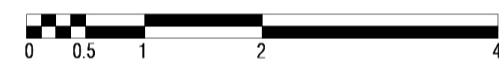
Disclaimer:

1. All room dimensions are measured to structural elements and exclude all finishes and construction tolerances. 2. All dimensions have been provided by our consultant architects. 3. All materials, dimensions and drawings are approximate. Information is subject to change without notice. 4. Actual suite area may vary from the stated area. Drawings not to scale. The developer reserves the right to make revisions. 5. Calculation of suite area is measured as the area bounded by the centre line of the demising or partition walls separating one unit from another unit, the exterior face of all exterior walls, and the exterior face of the corridor wall enclosing the adjoining unit. 6. Calculation of balcony area is measured as the area bounded by the centre line of the demising or partition walls separating one unit from another unit, the outmost face of the enclosing guard and the external face of the unit adjoining the balcony. 7. The units are measured at typical floor in the building. Columns may vary in size depending on the floor level.

جواهر

JAWAHER RESIDENCES TWO

BUILDING	JAWAHER TWO
4 BEDROOM + MAID	TYPE 4A-2
UNIT NO.	302
SUITE AREA	175.84 m² / 1892.72 ft²
COVERED TERRACE AREA	26.83 m² / 288.80 ft²
TOTAL AREA	202.67 m² / 2181.52 ft²
TERRACE AREA	43.61 m² / 469.41 ft²



Disclaimer:

1. All room dimensions are measured to structural elements and exclude all finishes and construction tolerances. 2. All dimensions have been provided by our consultant architects. 3. All materials, dimensions and drawings are approximate. Information is subject to change without notice. 4. Actual suite area may vary from the stated area. Drawings not to scale. The developer reserves the right to make revisions. 5. Calculation of suite area is measured as the area bounded by the centre line of the demising or partition walls separating one unit from another unit, the exterior face of all exterior walls, and the exterior face of the corridor wall enclosing the adjoining unit. 6. Calculation of balcony area is measured as the area bounded by the centre line of the demising or partition walls separating one unit from another unit, the outmost face of the enclosing guard and the external face of the unit adjoining the balcony. 7. The units are measured at typical floor in the building. Columns may vary in size depending on the floor level.

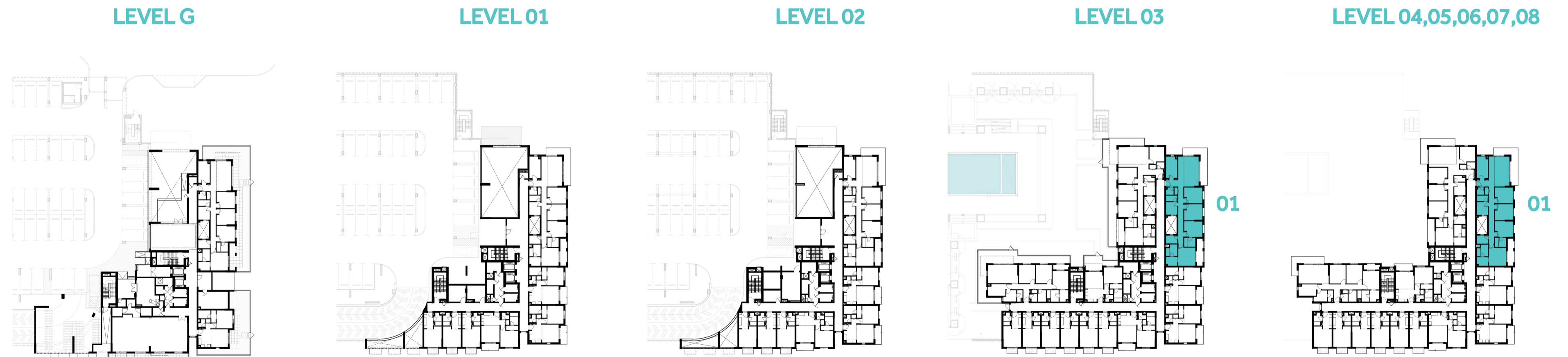
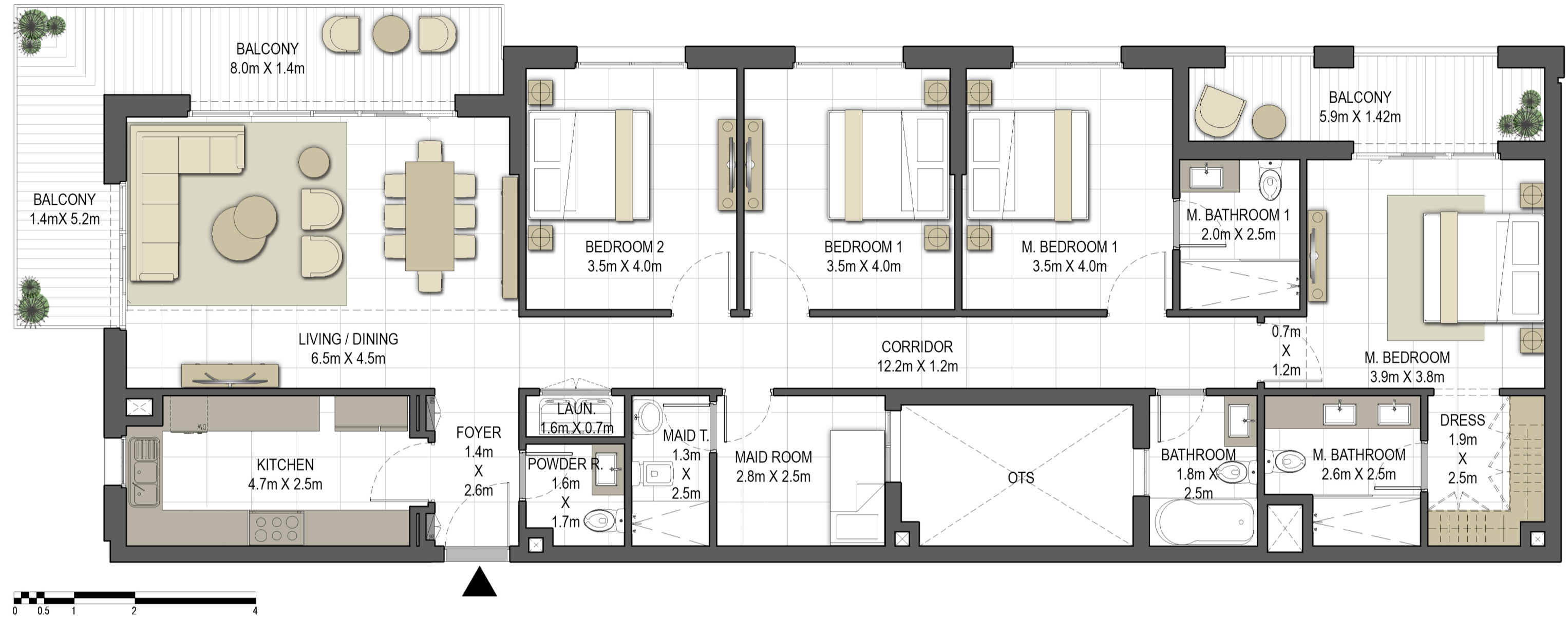


جزيرة مريم
MARYAM ISLAND

جواهر

JAWAHER RESIDENCES TWO

BUILDING	JAWAHER TWO
4 BEDROOM + MAID	TYPE 4B-1
UNIT NO.	301, 401, 501, 601, 701, 801
SUITE AREA	173.69 m ² / 1869.58 ft ²
BALCONY AREA	26.86 m ² / 289.12 ft ²
TOTAL AREA	200.55 m ² / 2158.70 ft ²



جزيرة مريم
MARYAM ISLAND

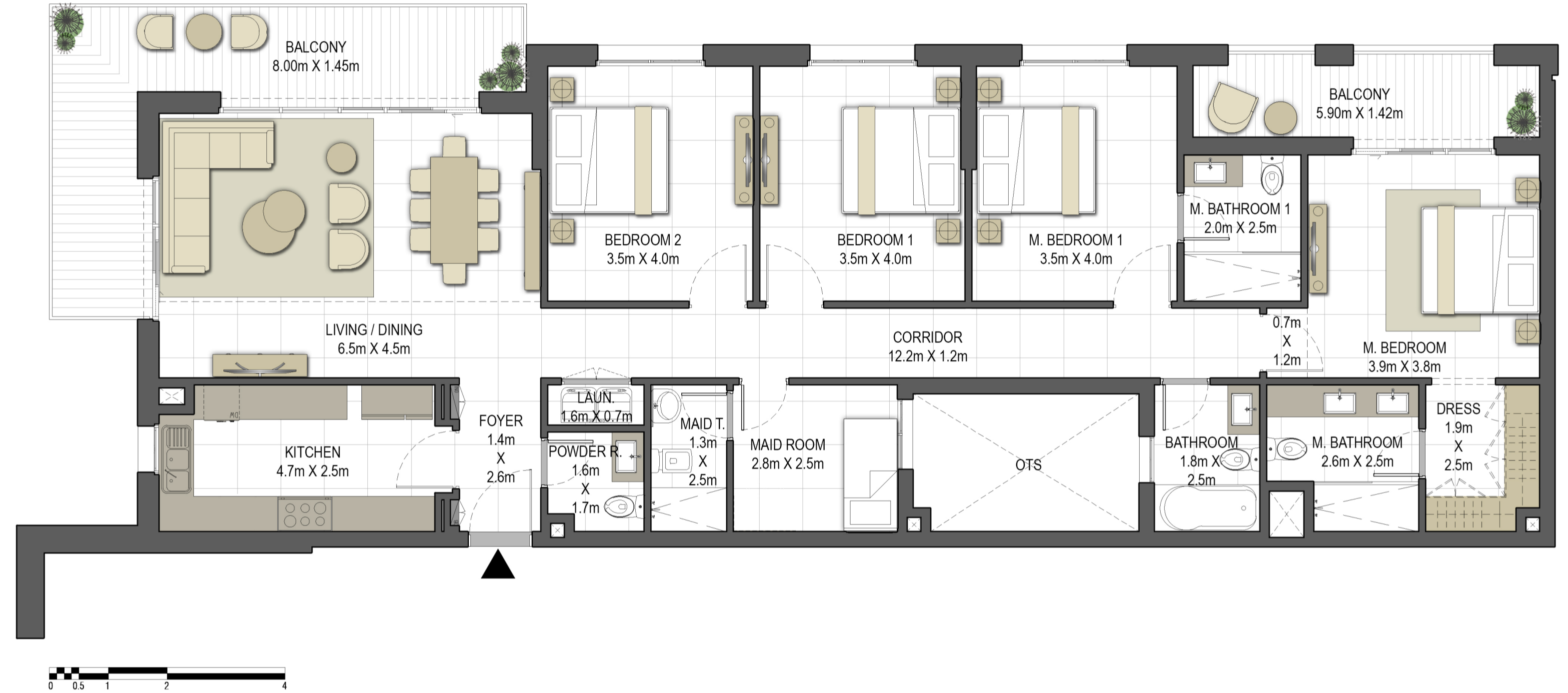
Disclaimer:

1. All room dimensions are measured to structural elements and exclude all finishes and construction tolerances. 2. All dimensions have been provided by our consultant architects. 3. All materials, dimensions and drawings are approximate. Information is subject to change without notice. 4. Actual suite area may vary from the stated area. Drawings not to scale. The developer reserves the right to make revisions. 5. Calculation of suite area is measured as the area bounded by the centre line of the demising or partition walls separating one unit from another unit, the exterior face of all exterior walls, and the exterior face of the corridor wall enclosing the adjoining unit. 6. Calculation of balcony area is measured as the area bounded by the centre line of the demising or partition walls separating one unit from another unit, the outmost face of the enclosing guard and the external face of the unit adjoining the balcony. 7. The units are measured at typical floor in the building. Columns may vary in size depending on the floor level.

جواهر

JAWAHER RESIDENCES TWO

BUILDING	JAWAHER TWO
4 BEDROOM + MAID	TYPE 4B-2
UNIT NO.	101, 201
SUITE AREA	174.23 m ² / 1875.39 ft ²
BALCONY AREA	26.86 m ² / 289.12 ft ²
TOTAL AREA	201.09 m ² / 2164.51 ft ²



جزيرة مريم
MARYAM ISLAND

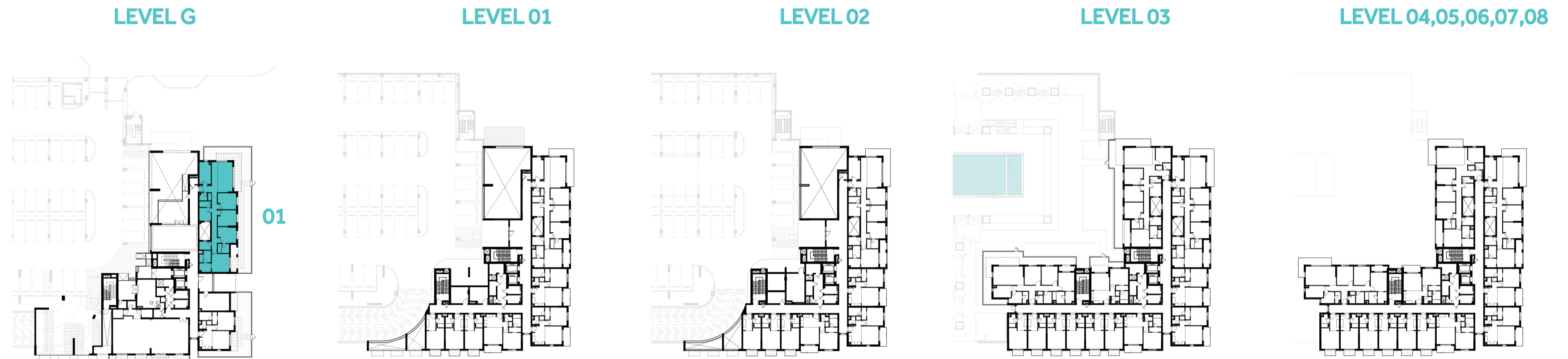
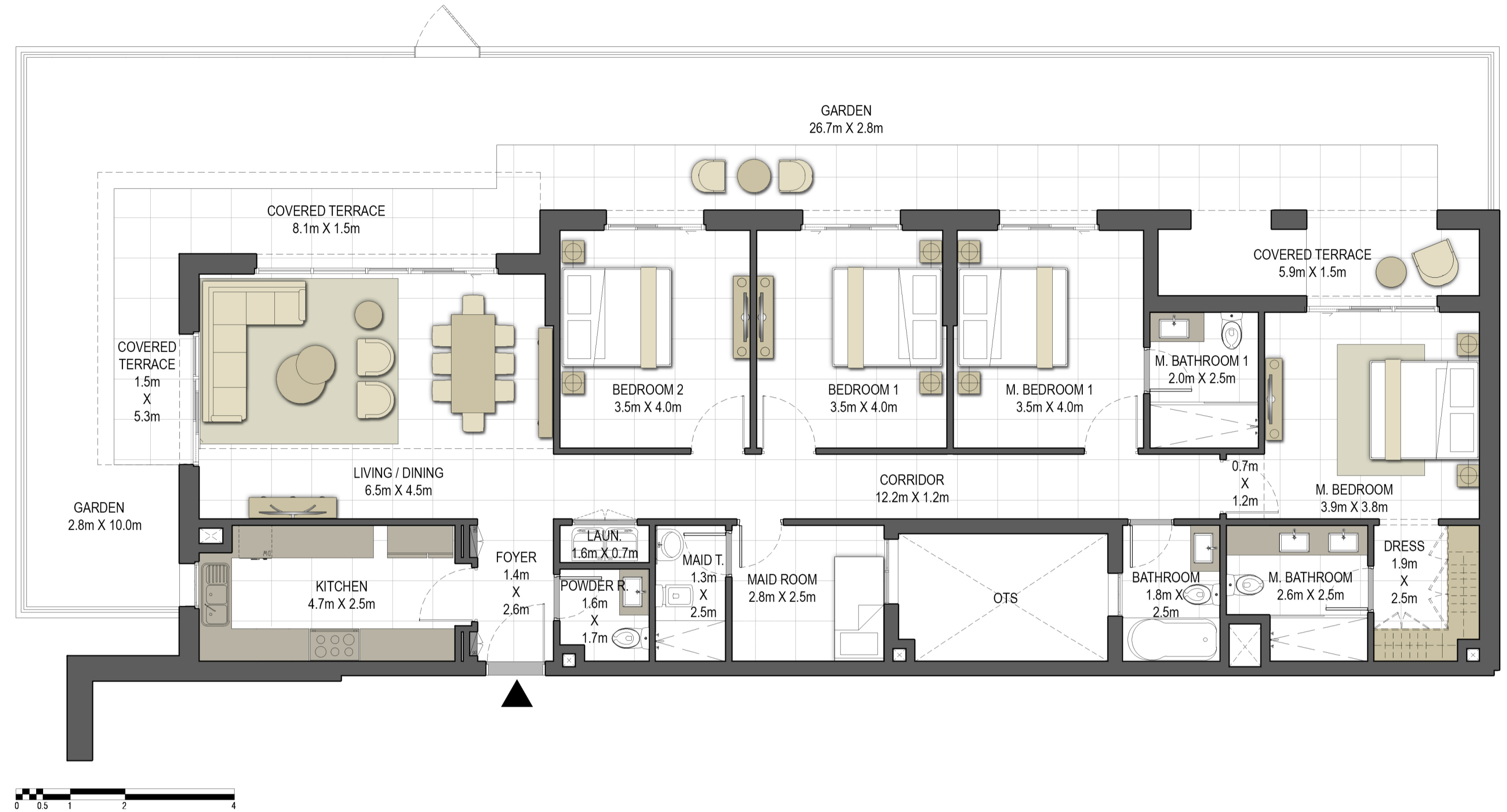
Disclaimer:

1. All room dimensions are measured to structural elements and exclude all finishes and construction tolerances. 2. All dimensions have been provided by our consultant architects. 3. All materials, dimensions and drawings are approximate. Information is subject to change without notice. 4. Actual suite area may vary from the stated area. Drawings not to scale. The developer reserves the right to make revisions. 5. Calculation of suite area is measured as the area bounded by the centre line of the demising or partition walls separating one unit from another unit, the exterior face of all exterior walls, and the exterior face of the corridor wall enclosing the adjoining unit. 6. Calculation of balcony area is measured as the area bounded by the centre line of the demising or partition walls separating one unit from another unit, the outmost face of the enclosing guard and the external face of the unit adjoining the balcony. 7. The units are measured at typical floor in the building. Columns may vary in size depending on the floor level.

جواهر

JAWAHER RESIDENCES TWO

BUILDING	JAWAHER TWO
4 BEDROOM + MAID	TYPE 4B-3
UNIT NO.	001
SUITE AREA	175.04 m² / 1884.11 ft²
COVERED TERRACE AREA	27.24 m² / 293.21 ft²
TOTAL AREA	202.28 m² / 2177.32 ft²
GARDEN AREA	91.70 m² / 987.05 ft²



Disclaimer:

1. All room dimensions are measured to structural elements and exclude all finishes and construction tolerances. 2. All dimensions have been provided by our consultant architects. 3. All materials, dimensions and drawings are approximate. Information is subject to change without notice. 4. Actual suite area may vary from the stated area. Drawings not to scale. The developer reserves the right to make revisions. 5. Calculation of suite area is measured as the area bounded by the centre line of the demising or partition walls separating one unit from another unit, the exterior face of all exterior walls, and the exterior face of the corridor wall enclosing the adjoining unit. 6. Calculation of balcony area is measured as the area bounded by the centre line of the demising or partition walls separating one unit from another unit, the outmost face of the enclosing guard and the external face of the unit adjoining the balcony. 7. The units are measured at typical floor in the building. Columns may vary in size depending on the floor level.



جزيرة مريم
MARYAM ISLAND