

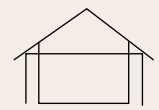


أحد مشاريع
DEVELOPED BY

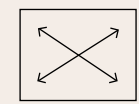


WELCOME *to* PEAK LIVING

The best of all worlds awaits you in the gated community of Reem Hills, where a luxurious life of leisure, serenity, healthy living, and an unmatched diverse community is built in spinning ribbons overlooking splendid surroundings such as man-made hill, beaches, and a canal.



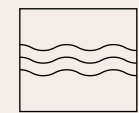
VILLAS, TOWNHOUSES
& APARTMENTS



A RANGE OF PLOT SIZES



CLOSE PROXIMITY TO KEY
DESTINATIONS IN ABU DHABI



SPACIOUS AND
CONTINUOUS PARKS




AT THE CENTRE OF EVERYTHING

Just minutes away from key destinations, Reem Hills is a haven at the center of city life.




Abu Dhabi Mall
9m


Cleveland Clinic
9m


Repton School
6 min


Reem Hospital
3 min


Reem Mall
3 min


Sorbonne University
3 min

هلز
REEM HILLS

AL REEM ISLAND

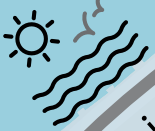
Sheikh Zayed Bin Sultan St

Hamdan Bin Mohammed St

Al Falah St

Hazza Bin Zayed The First St

Al Salam St


Corniche
20m


Qasr AlHosn
20m

UNMATCHED
LIVING
EXPERIENCE



CREATED FOR AN ELEVATED LIFESTYLE

At Reem Hills, the beautifully landscaped development boasts a gradation of levels, reaching the main and higher-most hill where breathtaking 360 degree views offer residents unimpeded sights of natural beauty from greenery to sea.



WITH INSPIRINGLY BEAUTIFUL MAN-MADE HILL

At Reem Hills, lush and panoramic landscapes ascend to ever higher grounds, providing you with the opportunity to rise above and expand your vision in naturally rich, functional, practical, regional, and climate-specific areas that are ideal for a life of tranquility, resilience, and harmony.



THE HEIGHTS OF
NATURAL SERENITY



A COMMUNITY THRIVING IN NATURE'S EMBRACE

Every corner of Reem Hills is created to exude and embrace you with peace. From your home to the moment you step outside, the options at hand to keep you serene, healthy, and in a constant state of well-being are numerous and plentiful. Allow yourself to thrive in a community that redefines the concepts of engagement, interaction, and fun.



VILLAS BUILT FOR THE
HEART, MIND, AND SOUL



DESIGN YOUR LIFE WITH YOUR CHOICES

At Reem Hills, residents have a choice between 5 to 7 bedroom villas in 2 design styles, providing residents with beautifully created architectural lines that inspire harmonious living in luxurious and intimate yet roomy settings, with breathtaking views on all sides.



ZEN DESIGN

Enjoy a life of simplicity and equilibrium in homes that bring together oriental influences and a contemporary style for a life of tranquility with your loved ones.



MINIMAL DESIGN

With minimalistic and architecturally designed contemporary spaces, discover the serenity of homes that provide understated luxury, panoramic views, and ultimate privacy.





SPACIOUS LIVING

With spacious villas catering to varying tastes and with wide-open areas outdoors, Reem Hills, delivers the maximum in spatial experience. Relax, luxuriate, and be well in homes and a community that embraces expansiveness on all levels, enabling you to enjoy the zenith of wellbeing and all the fruits of peak living at their most premium.









AMENITIES AT YOUR DOORSTEP

The amenities you'll find at Reem Hills cover the spectrum of all your needs so that you can experience tranquillity and a life well lived, with the highest security technology giving you peace of mind.



ACCESS TO
PROMENADE



PRIVATE POOLS



RETAIL SHOPS



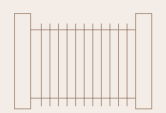
CLUB HOUSES



JOGGING &
CYCLING TRACKS



PARKS &
PLAYGROUNDS



GATED
COMMUNITY



CAFES &
RESTAURANTS



TRANQUILITY FROM
HILL TO SHORE SANDS





ALL YOUR NEEDS WITHIN REACH

Take your lifestyle to the next level and go above and beyond in all aspects of life. From its luxury to its tranquility and exceptional assets that set it apart in every way. This is where you'll discover peak living and the place that you can call home.



AMENITIES

- PRIVATE SCHOOL
- COMMUNITY CENTRE
- EARLY LEARNING CENTRE
- MOSQUES
- RETAIL
- RESTAURANTS & CAFES
- MEDICAL SERVICES
- CLUB HOUSES



PARKS

- NEIGHBORHOOD PARK
- LINEAR PARK
- POCKET PARK
- LANDSCAPED HILL
- COMMUNITY PARK
- JOGGING & CYCLING TRACKS
- SPORTS COURTS
- SHADED SEATING AREA



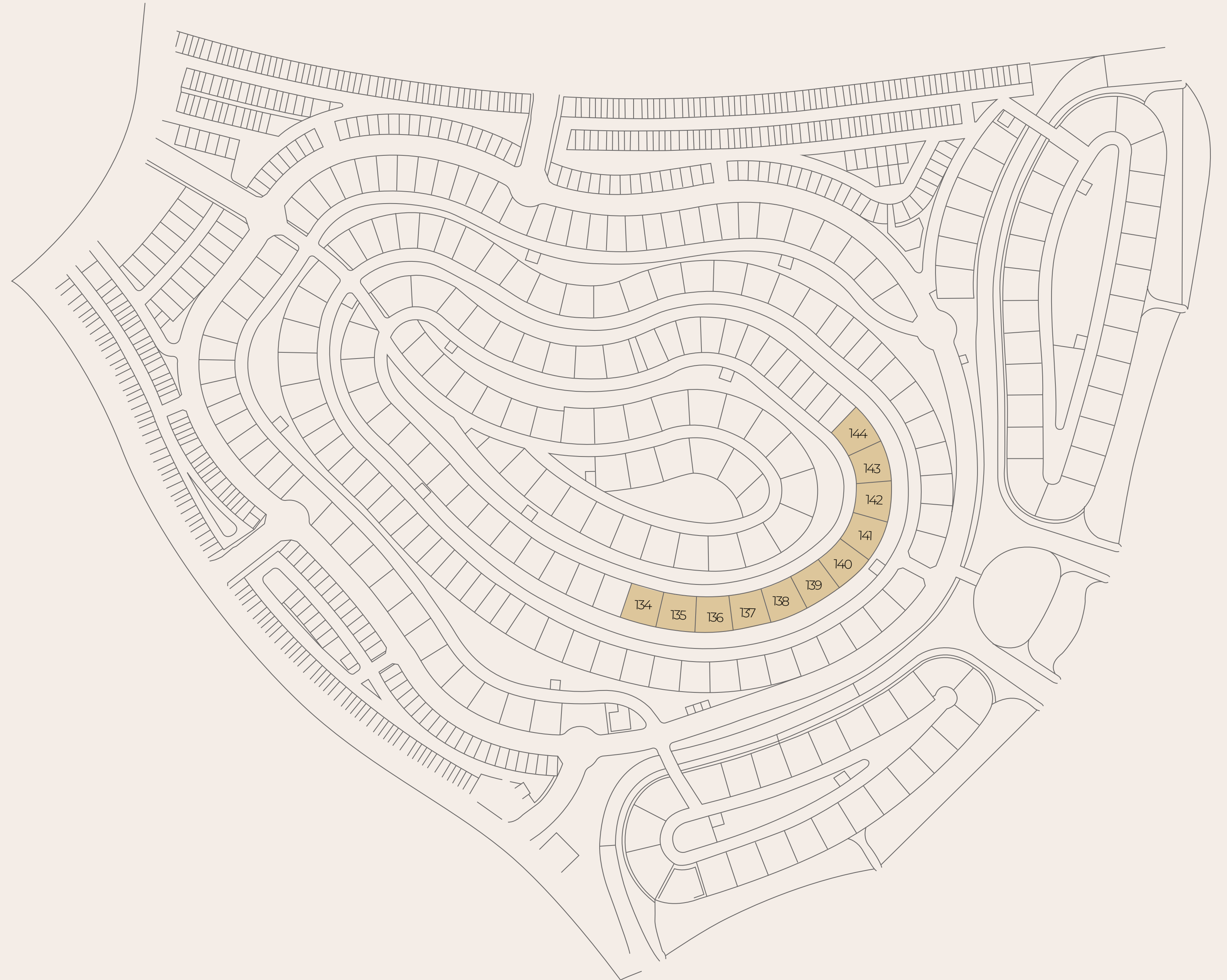
RECREATIONAL AREA

- SANDY BEACHES



7 BEDROOM VILLA - ZEN

Experience unmatched luxurious living spread over four floors with the best of all worlds all around you.





7 BR-ZEN GROUND FLOOR

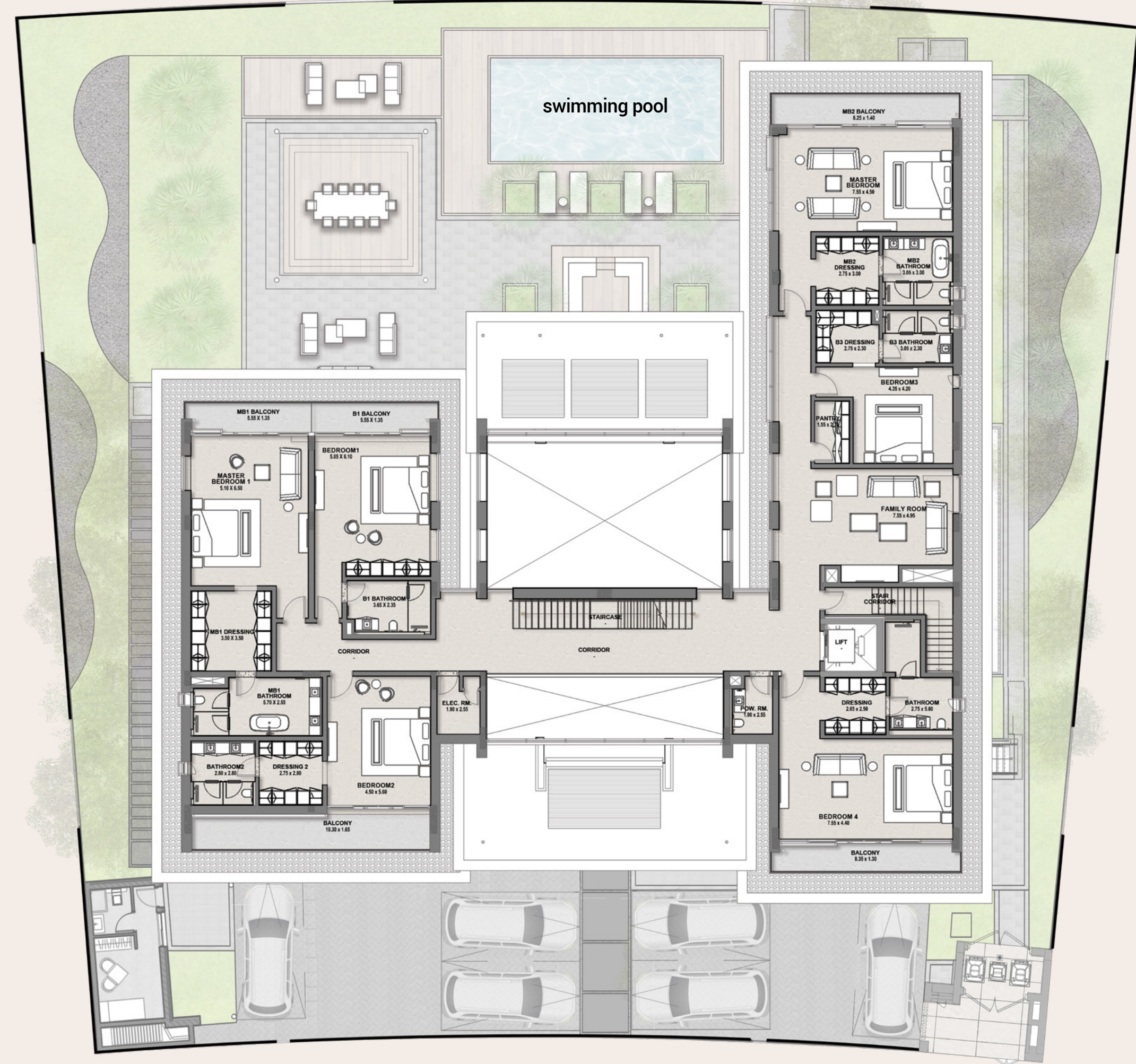


NO. OF BEDROOMS	07
FLOOR CONFIGURATION	B+G+1+Roof
TOTAL SELLABLE AREA	19,153 sqft
PLOT SIZE	21,687 sqft*

* Starting from

All materials, dimensions, and drawings are approximate only, including actual areas. / Information is subject to change at developer's discretion, without notice, and developer reserves the right to make revisions without liability. / All images used are for illustrative purposes only and do not represent the actual size, features, specifications, fittings, and furnishings.

7 BR-ZEN FIRST FLOOR



NO. OF BEDROOMS	07
FLOOR CONFIGURATION	B+G+1+Roof
TOTAL SELLABLE AREA	19,153 sqft
PLOT SIZE	21,687 sqft*

* Starting from

All materials, dimensions, and drawings are approximate only, including actual areas. / Information is subject to change at developer's discretion, without notice, and developer reserves the right to make revisions without liability. / All images used are for illustrative purposes only and do not represent the actual size, features, specifications, fittings, and furnishings.

7 BR-ZEN BASEMENT



NO. OF BEDROOMS	07
FLOOR CONFIGURATION	B+G+1+Roof
TOTAL SELLABLE AREA	19,153 sqft
PLOT SIZE	21,687 sqft*

* Starting from

All materials, dimensions, and drawings are approximate only, including actual areas. / Information is subject to change at developer's discretion, without notice, and developer reserves the right to make revisions without liability. / All images used are for illustrative purposes only and do not represent the actual size, features, specifications, fittings, and furnishings.

7 BR-ZEN ROOF FLOOR



NO. OF BEDROOMS	07
FLOOR CONFIGURATION	B+G+1+Roof
TOTAL SELLABLE AREA	19,153 sqft
PLOT SIZE	21,687 sqft*

* Starting from

All materials, dimensions, and drawings are approximate only, including actual areas. / Information is subject to change at developer's discretion, without notice, and developer reserves the right to make revisions without liability. / All images used are for illustrative purposes only and do not represent the actual size, features, specifications, fittings, and furnishings.

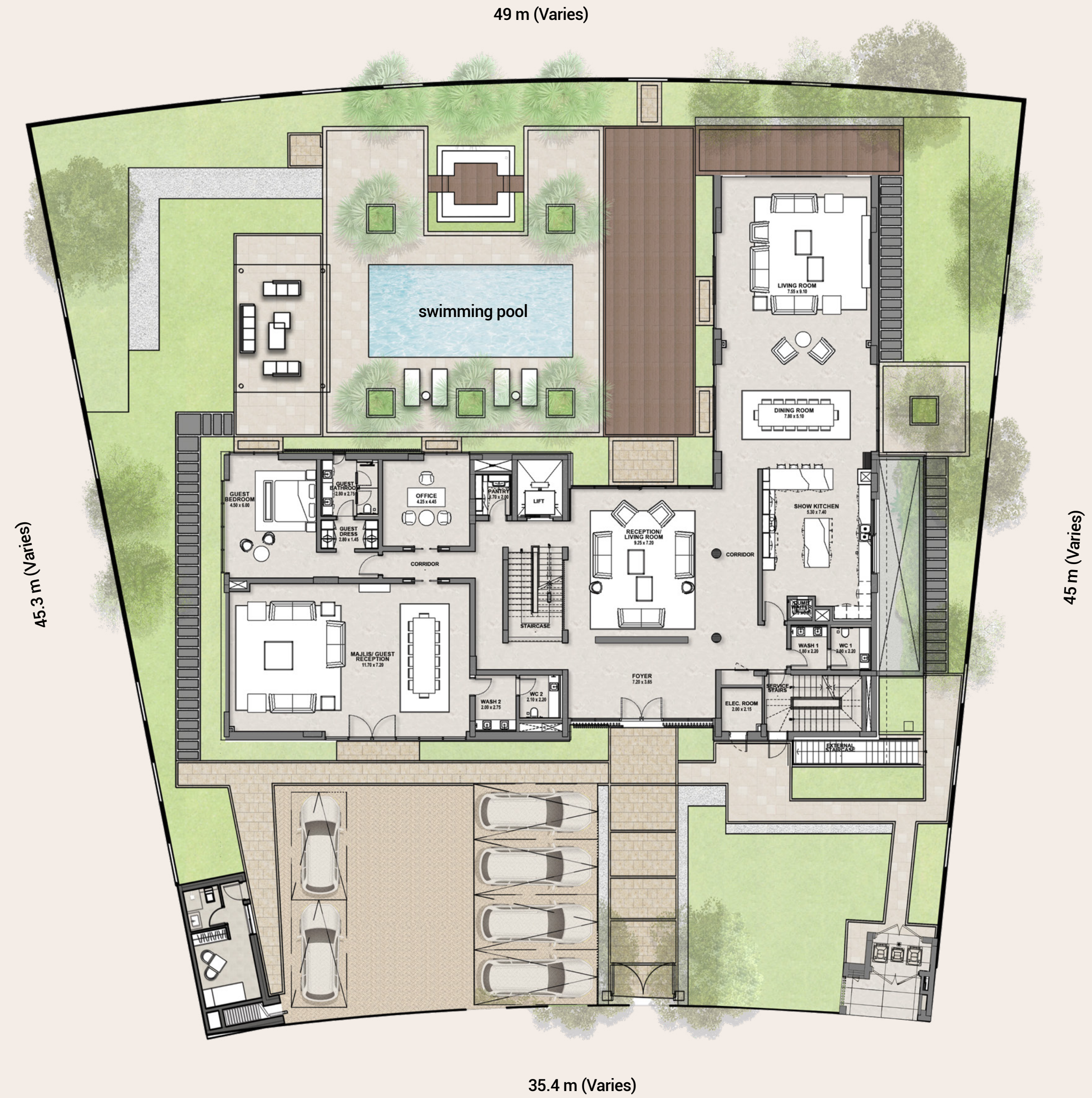
7 BEDROOM VILLA - MINIMAL

Live the peak of sophisticated luxury in villas spread over four floors overlooking natural splendor in every direction.





7 BR-MINIMAL GROUND FLOOR

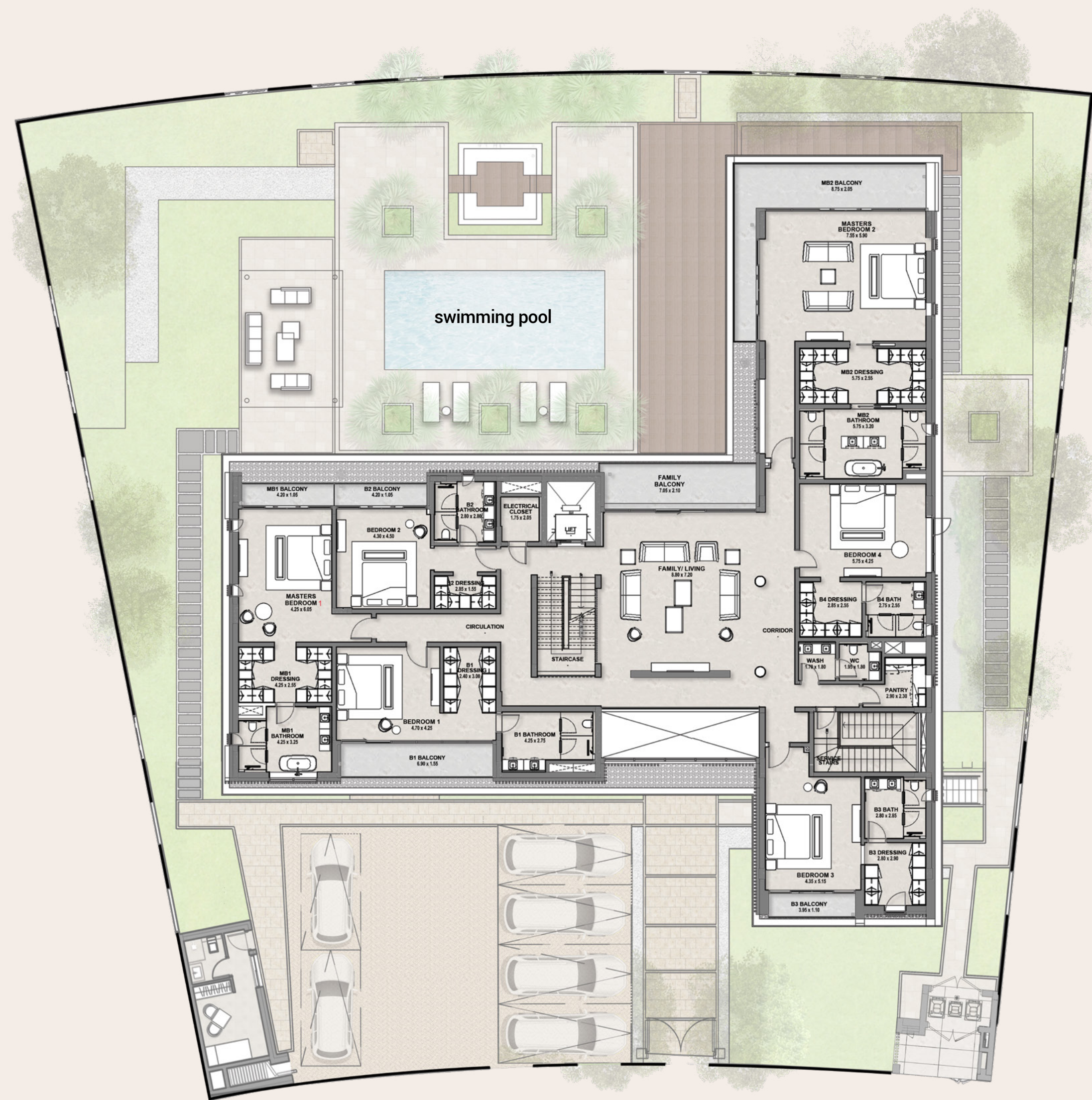


NO. OF BEDROOMS	07
FLOOR CONFIGURATION	B+G+1+Roof
TOTAL SELLABLE AREA	17,435 sqft
PLOT SIZE	19,042 sqft*

* Starting from

All materials, dimensions, and drawings are approximate only, including actual areas. / Information is subject to change at developer's discretion, without notice, and developer reserves the right to make revisions without liability. / All images used are for illustrative purposes only and do not represent the actual size, features, specifications, fittings, and furnishings.

7 BR-MINIMAL FIRST FLOOR

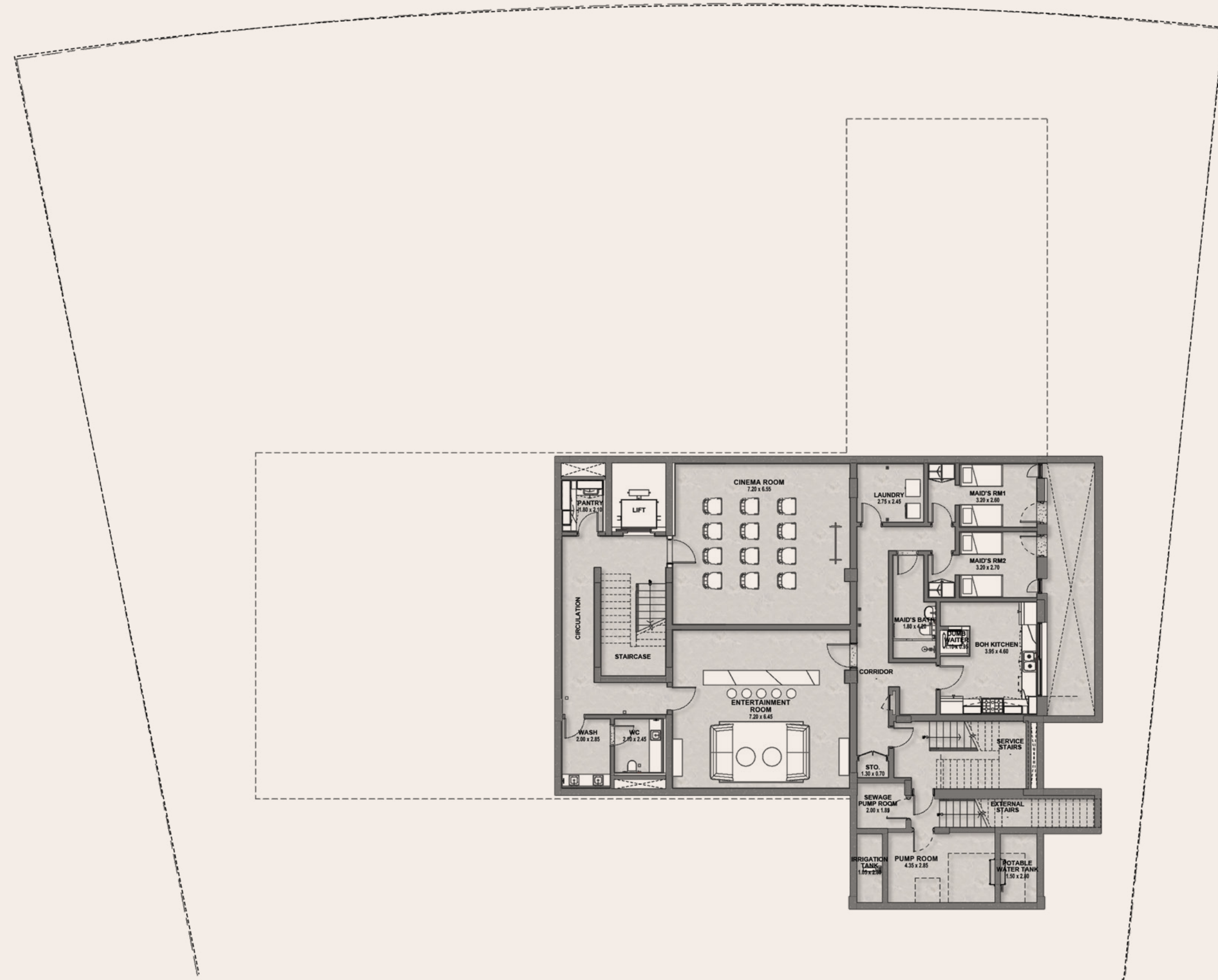


NO. OF BEDROOMS	07
FLOOR CONFIGURATION	B+G+1+Roof
TOTAL SELLABLE AREA	17,435 sqft
PLOT SIZE	19,042 sqft*

* Starting from

All materials, dimensions, and drawings are approximate only, including actual areas. / Information is subject to change at developer's discretion, without notice, and developer reserves the right to make revisions without liability. / All images used are for illustrative purposes only and do not represent the actual size, features, specifications, fittings, and furnishings.

7 BR-MINIMAL BASEMENT

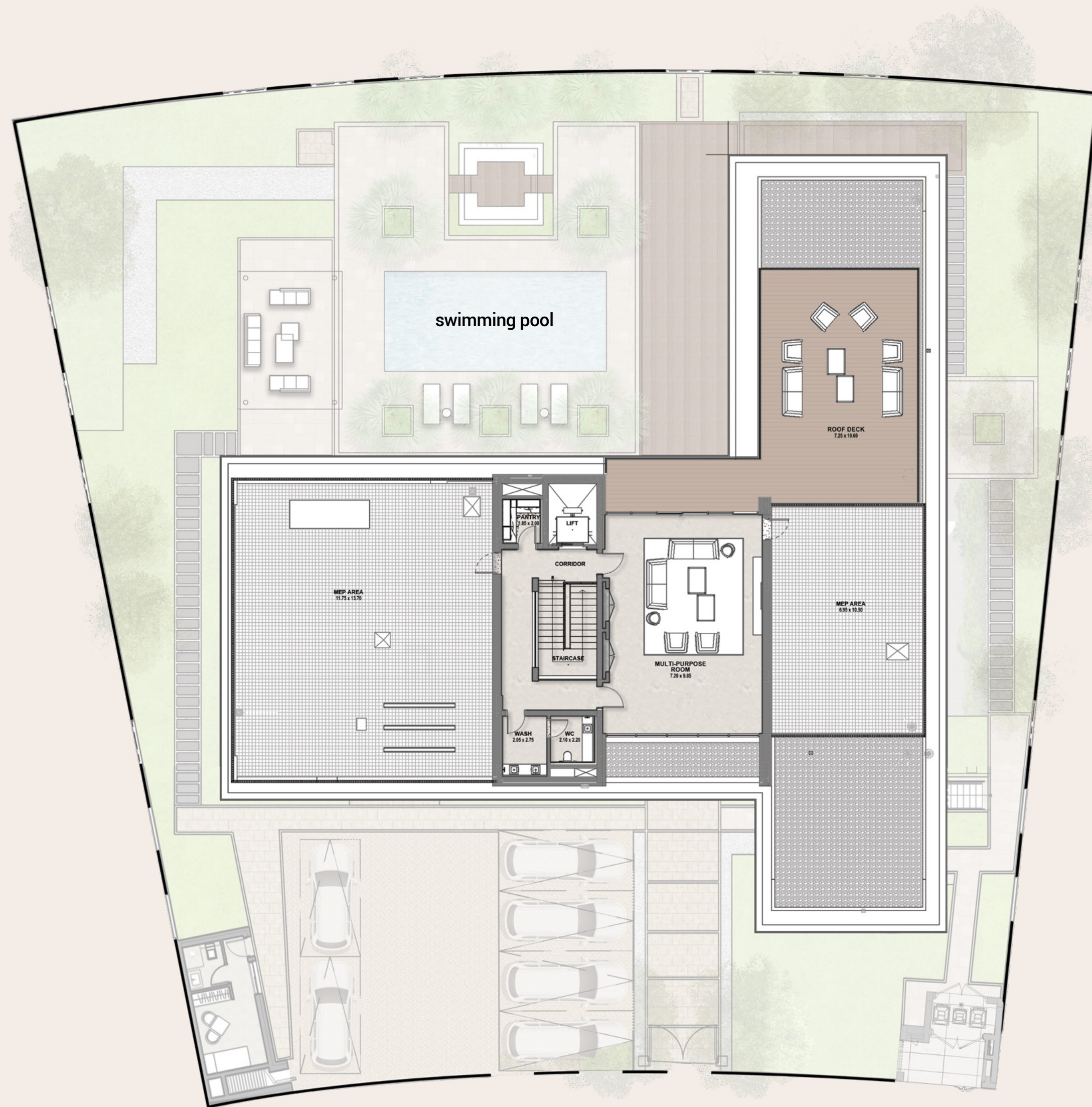


NO. OF BEDROOMS	07
FLOOR CONFIGURATION	B+G+1+Roof
TOTAL SELLABLE AREA	17,435 sqft
PLOT SIZE	19,042 sqft*

* Starting from

All materials, dimensions, and drawings are approximate only, including actual areas. / Information is subject to change at developer's discretion, without notice, and developer reserves the right to make revisions without liability. / All images used are for illustrative purposes only and do not represent the actual size, features, specifications, fittings, and furnishings.

7 BR-MINIMAL ROOF FLOOR



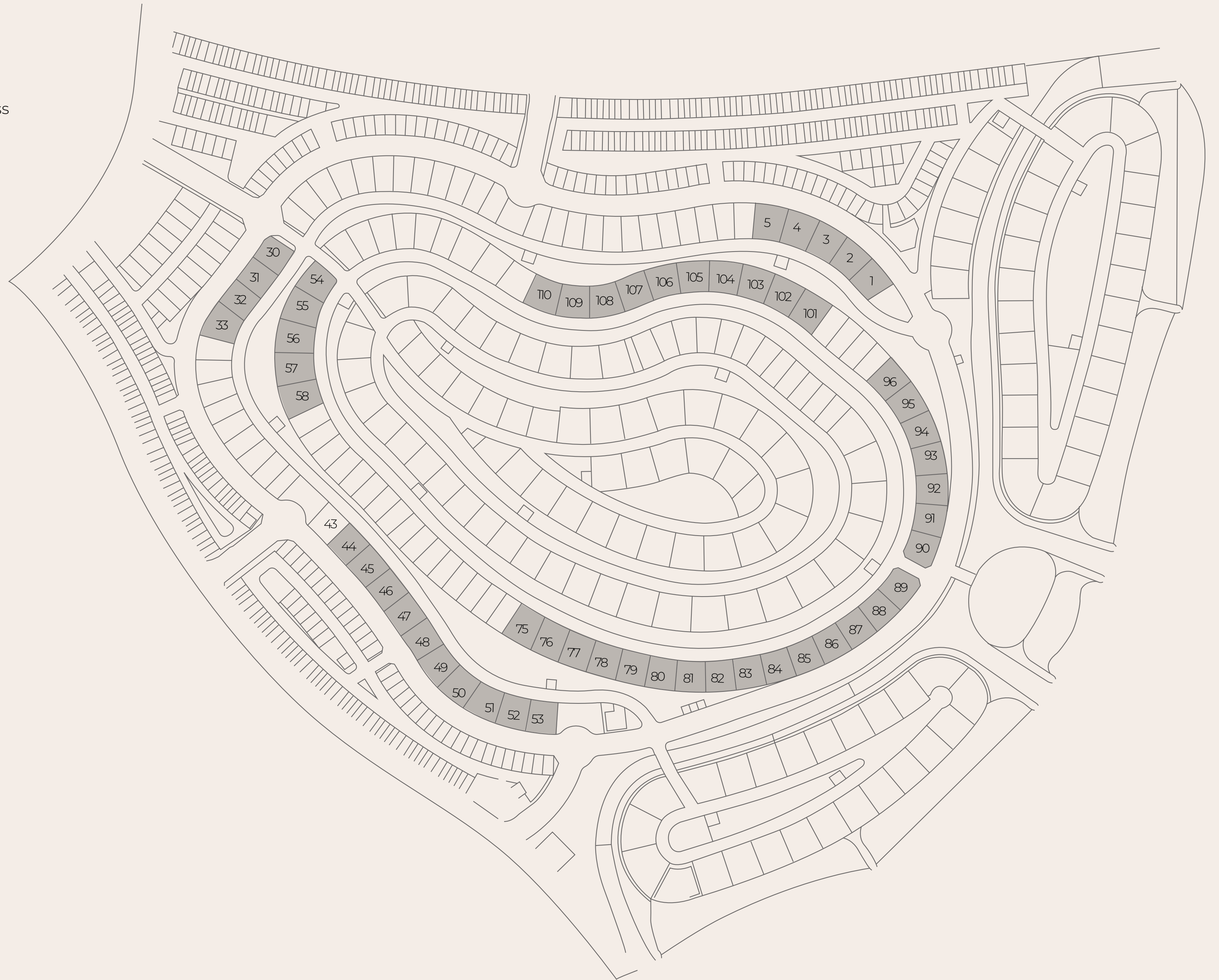
NO. OF BEDROOMS	07
FLOOR CONFIGURATION	B+G+1+Roof
TOTAL SELLABLE AREA	17,435 sqft
PLOT SIZE	19,042 sqft*

* Starting from

All materials, dimensions, and drawings are approximate only, including actual areas. / Information is subject to change at developer's discretion, without notice, and developer reserves the right to make revisions without liability. / All images used are for illustrative purposes only and do not represent the actual size, features, specifications, fittings, and furnishings.

6 BEDROOM VILLA - ZEN

Luxuriate and enhance your wellness in spacious homes spread across three floors with spellbinding views in every direction.





234

6 BR-ZEN GROUND FLOOR

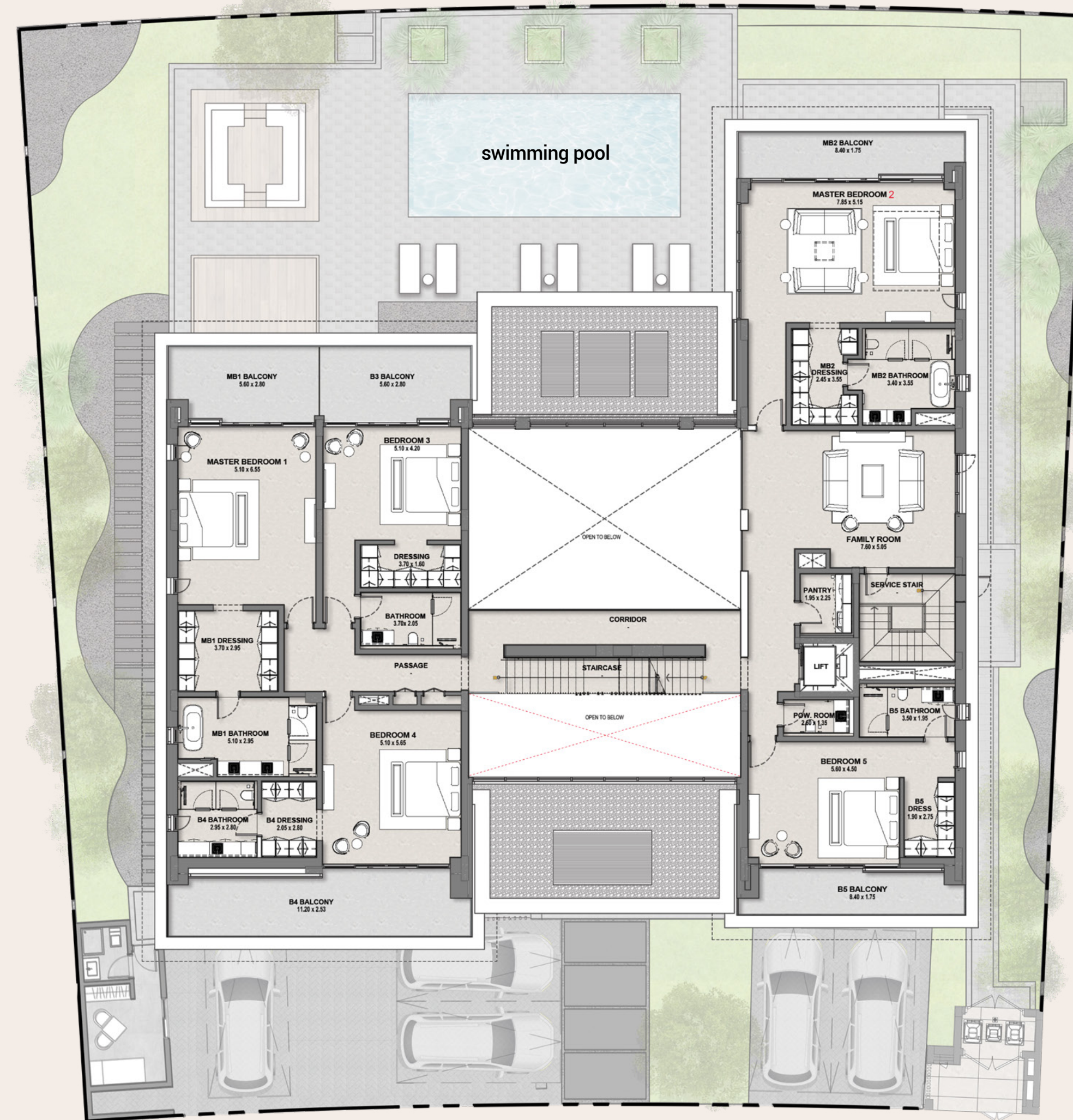


NO. OF BEDROOMS	06
FLOOR CONFIGURATION	G+1+Roof
TOTAL SELLABLE AREA	14,382 sqft
PLOT SIZE	15,232 sqft*

* Starting from

All materials, dimensions, and drawings are approximate only, including actual areas. / Information is subject to change at developer's discretion, without notice, and developer reserves the right to make revisions without liability. / All images used are for illustrative purposes only and do not represent the actual size, features, specifications, fittings, and furnishings.

6 BR-ZEN FIRST FLOOR



NO. OF BEDROOMS	06
FLOOR CONFIGURATION	G+1+Roof
TOTAL SELLABLE AREA	14,382 sqft
PLOT SIZE	15,232 sqft*

* Starting from

All materials, dimensions, and drawings are approximate only, including actual areas. / Information is subject to change at developer's discretion, without notice, and developer reserves the right to make revisions without liability. / All images used are for illustrative purposes only and do not represent the actual size, features, specifications, fittings, and furnishings.

6 BR-ZEN ROOF FLOOR



NO. OF BEDROOMS	06
FLOOR CONFIGURATION	G+1+Roof
TOTAL SELLABLE AREA	14,382 sqft
PLOT SIZE	15,232 sqft*

* Starting from

All materials, dimensions, and drawings are approximate only, including actual areas. / Information is subject to change at developer's discretion, without notice, and developer reserves the right to make revisions without liability. / All images used are for illustrative purposes only and do not represent the actual size, features, specifications, fittings, and furnishings.

6 BEDROOM VILLA - MINIMAL

Enjoy the zenith of well-being in expansive villas spread over three floors with lush panoramic landscapes all around.





6 BR-MINIMAL GROUND FLOOR

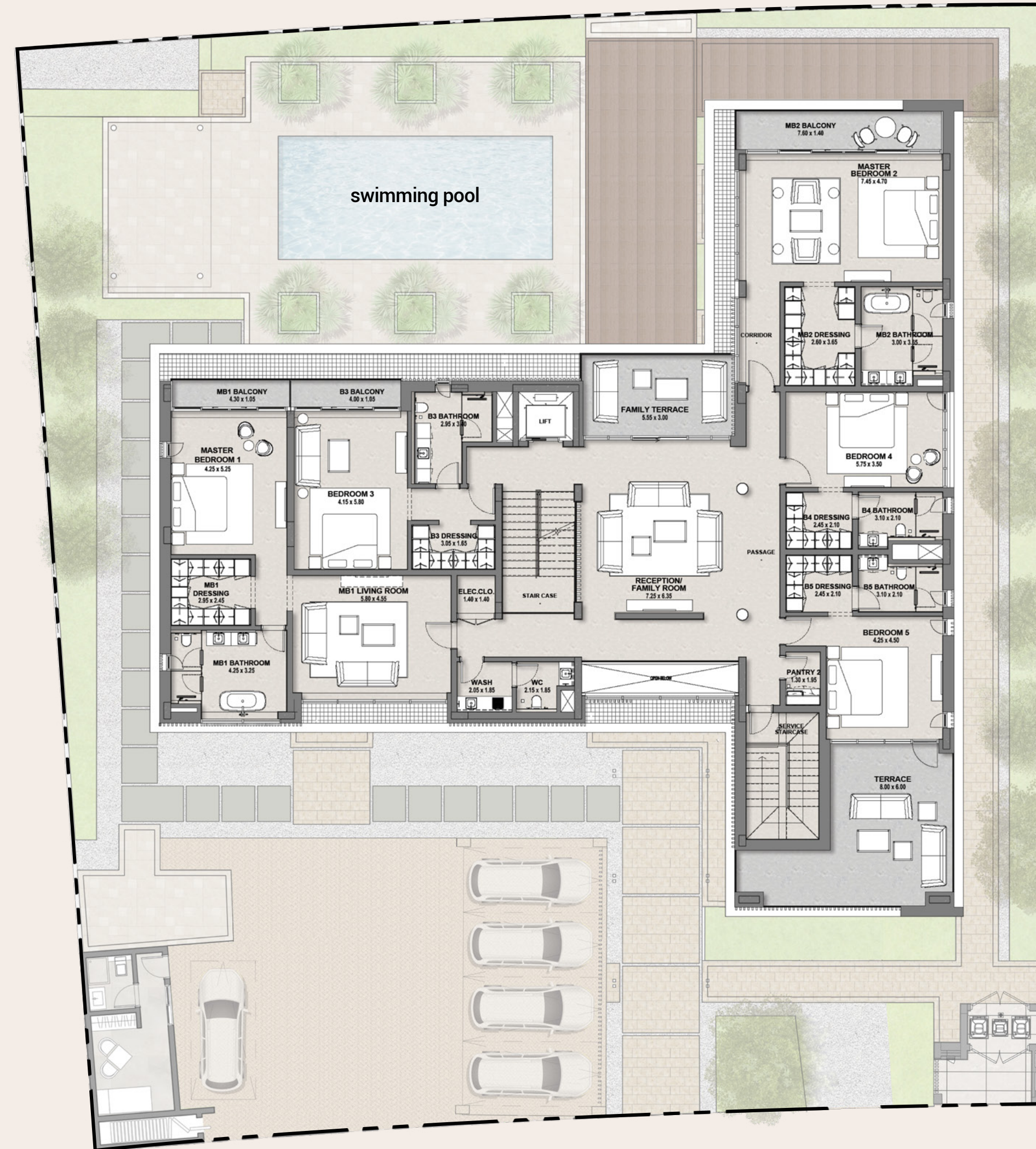


NO. OF BEDROOMS	06
FLOOR CONFIGURATION	G+1+Roof
TOTAL SELLABLE AREA	13,108 sqft
PLOT SIZE	15,161 sqft*

* Starting from

All materials, dimensions, and drawings are approximate only, including actual areas. / Information is subject to change at developer's discretion, without notice, and developer reserves the right to make revisions without liability. / All images used are for illustrative purposes only and do not represent the actual size, features, specifications, fittings, and furnishings.

6 BR-MINIMAL FIRST FLOOR

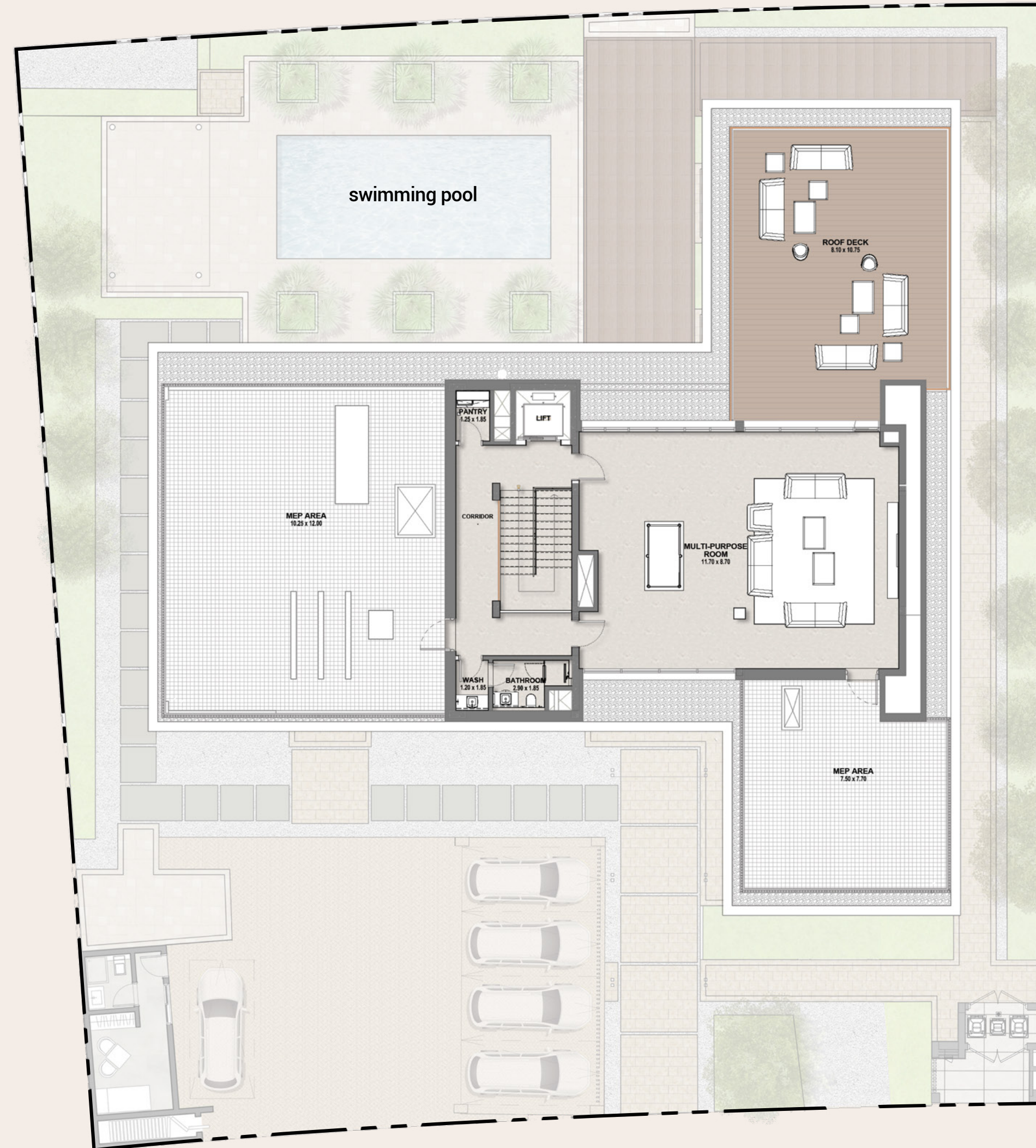


NO. OF BEDROOMS	06
FLOOR CONFIGURATION	G+1+Roof
TOTAL SELLABLE AREA	13,108 sqft
PLOT SIZE	15,161 sqft*

* Starting from

All materials, dimensions, and drawings are approximate only, including actual areas. / Information is subject to change at developer's discretion, without notice, and developer reserves the right to make revisions without liability. / All images used are for illustrative purposes only and do not represent the actual size, features, specifications, fittings, and furnishings.

6 BR-MINIMAL ROOF FLOOR



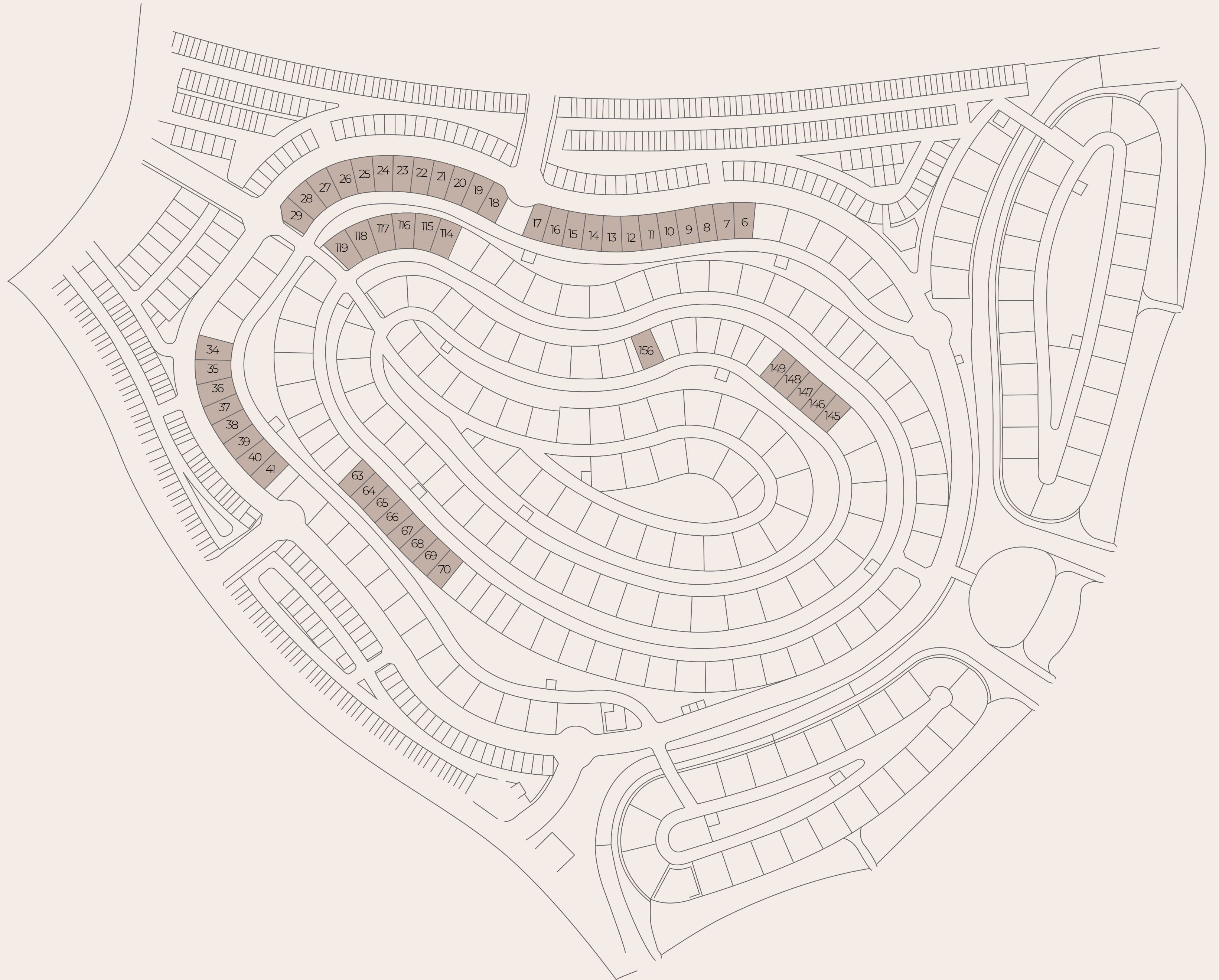
NO. OF BEDROOMS	06
FLOOR CONFIGURATION	G+1+Roof
TOTAL SELLABLE AREA	13,108 sqft
PLOT SIZE	15,161 sqft*

* Starting from

All materials, dimensions, and drawings are approximate only, including actual areas. / Information is subject to change at developer's discretion, without notice, and developer reserves the right to make revisions without liability. / All images used are for illustrative purposes only and do not represent the actual size, features, specifications, fittings, and furnishings.

5 BEDROOM VILLA - ZEN

Embrace leisurely and serene living with villas spread across three floors at the heart of nature's best.





5 BR-ZEN GROUND FLOOR

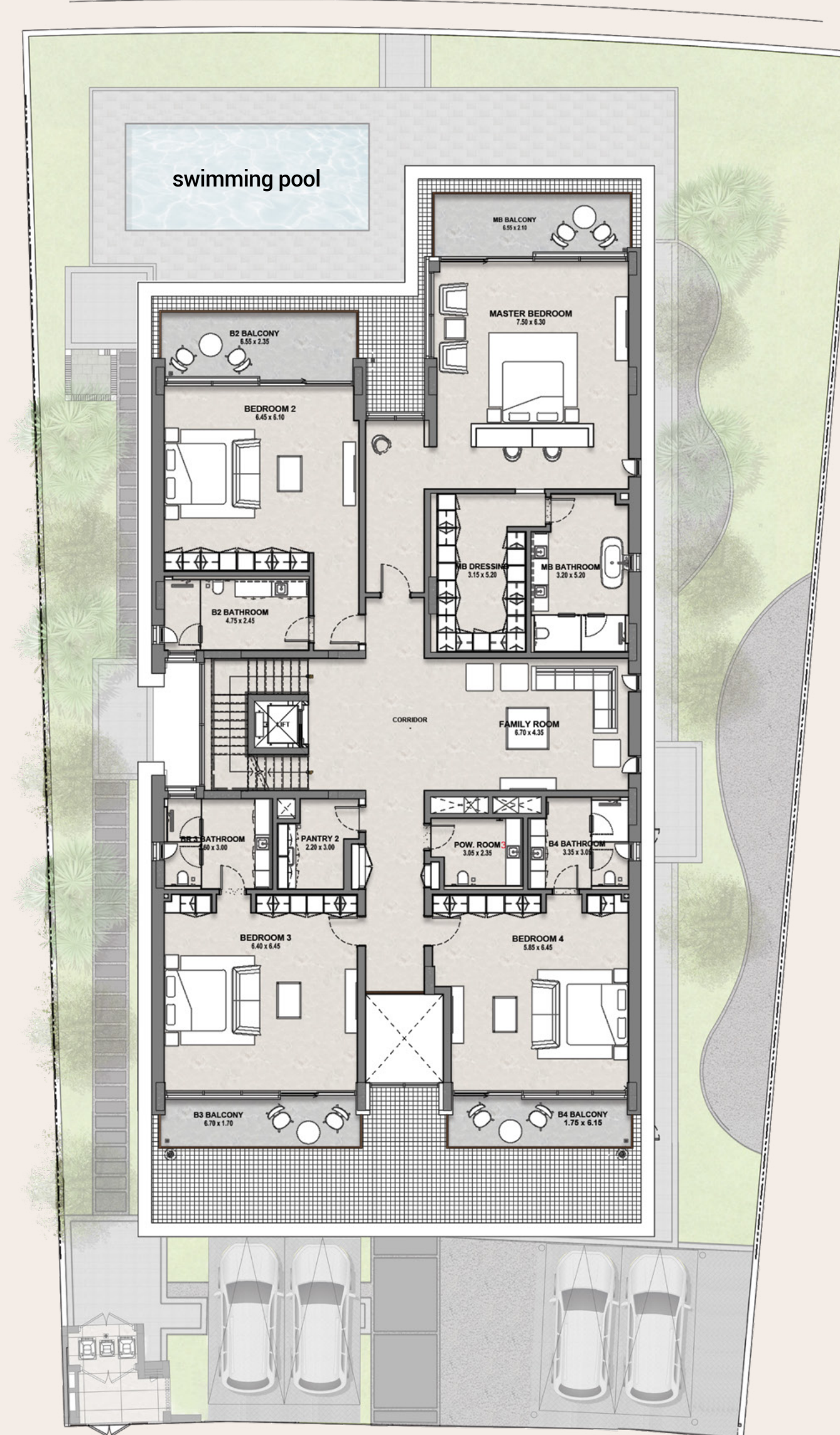
NO. OF BEDROOMS	05
FLOOR CONFIGURATION	G+1+Roof
TOTAL SELLABLE AREA	11,119 sqft
PLOT SIZE	11,057 sqft*

* Starting from



All materials, dimensions, and drawings are approximate only, including actual areas. / Information is subject to change at developer's discretion, without notice, and developer reserves the right to make revisions without liability. / All images used are for illustrative purposes only and do not represent the actual size, features, specifications, fittings, and furnishings.

5 BR-ZEN FIRST FLOOR

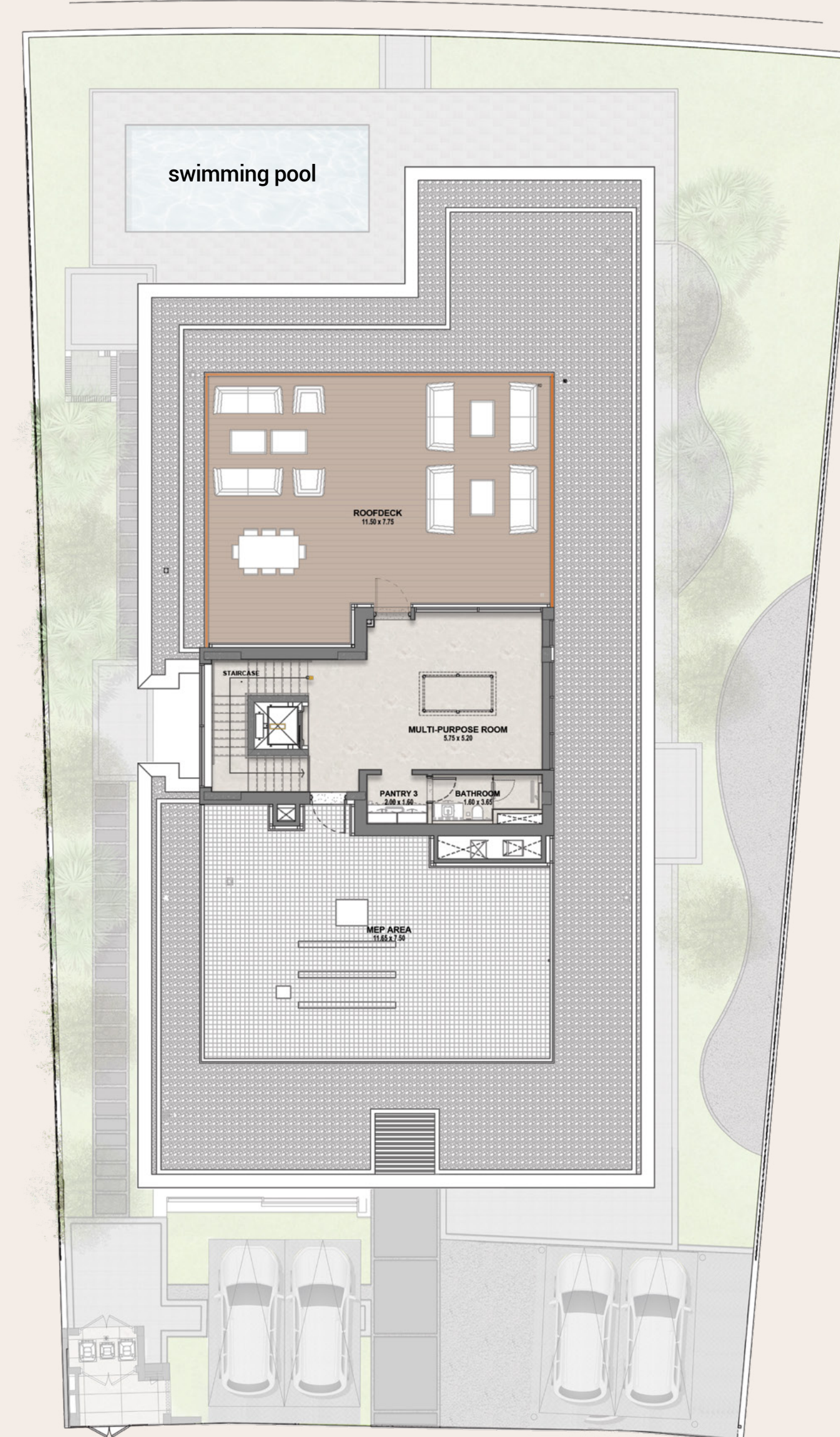


NO. OF BEDROOMS	05
FLOOR CONFIGURATION	G+1+Roof
TOTAL SELLABLE AREA	11,119 sqft
PLOT SIZE	11,057 sqft*

* Starting from

All materials, dimensions, and drawings are approximate only, including actual areas. / Information is subject to change at developer's discretion, without notice, and developer reserves the right to make revisions without liability. / All images used are for illustrative purposes only and do not represent the actual size, features, specifications, fittings, and furnishings.

5 BR-ZEN ROOF FLOOR



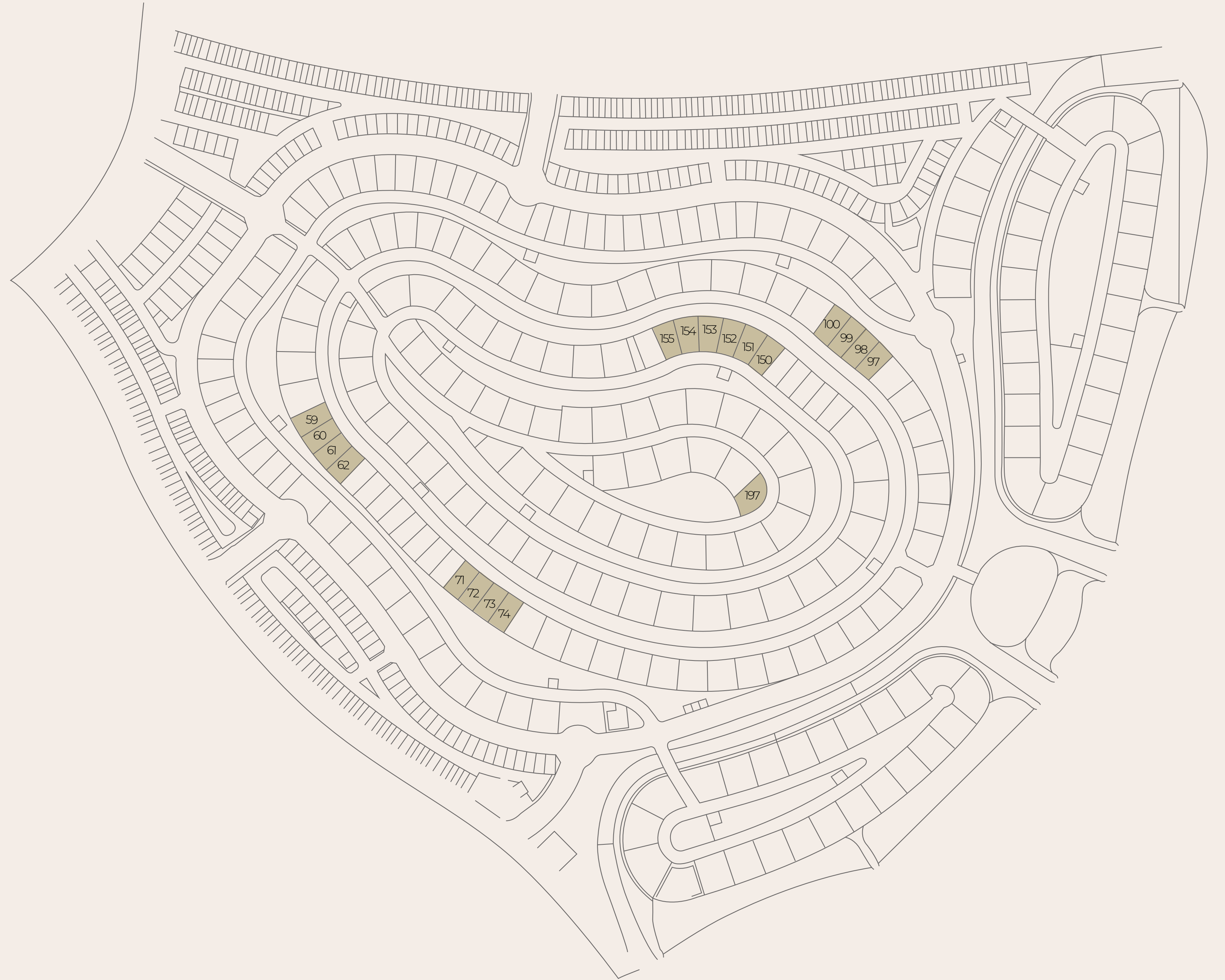
NO. OF BEDROOMS	05
FLOOR CONFIGURATION	G+1+Roof
TOTAL SELLABLE AREA	11,119 sqft
PLOT SIZE	11,057 sqft*

* Starting from

All materials, dimensions, and drawings are approximate only, including actual areas. / Information is subject to change at developer's discretion, without notice, and developer reserves the right to make revisions without liability. / All images used are for illustrative purposes only and do not represent the actual size, features, specifications, fittings, and furnishings.

5 BEDROOM VILLA - MINIMAL

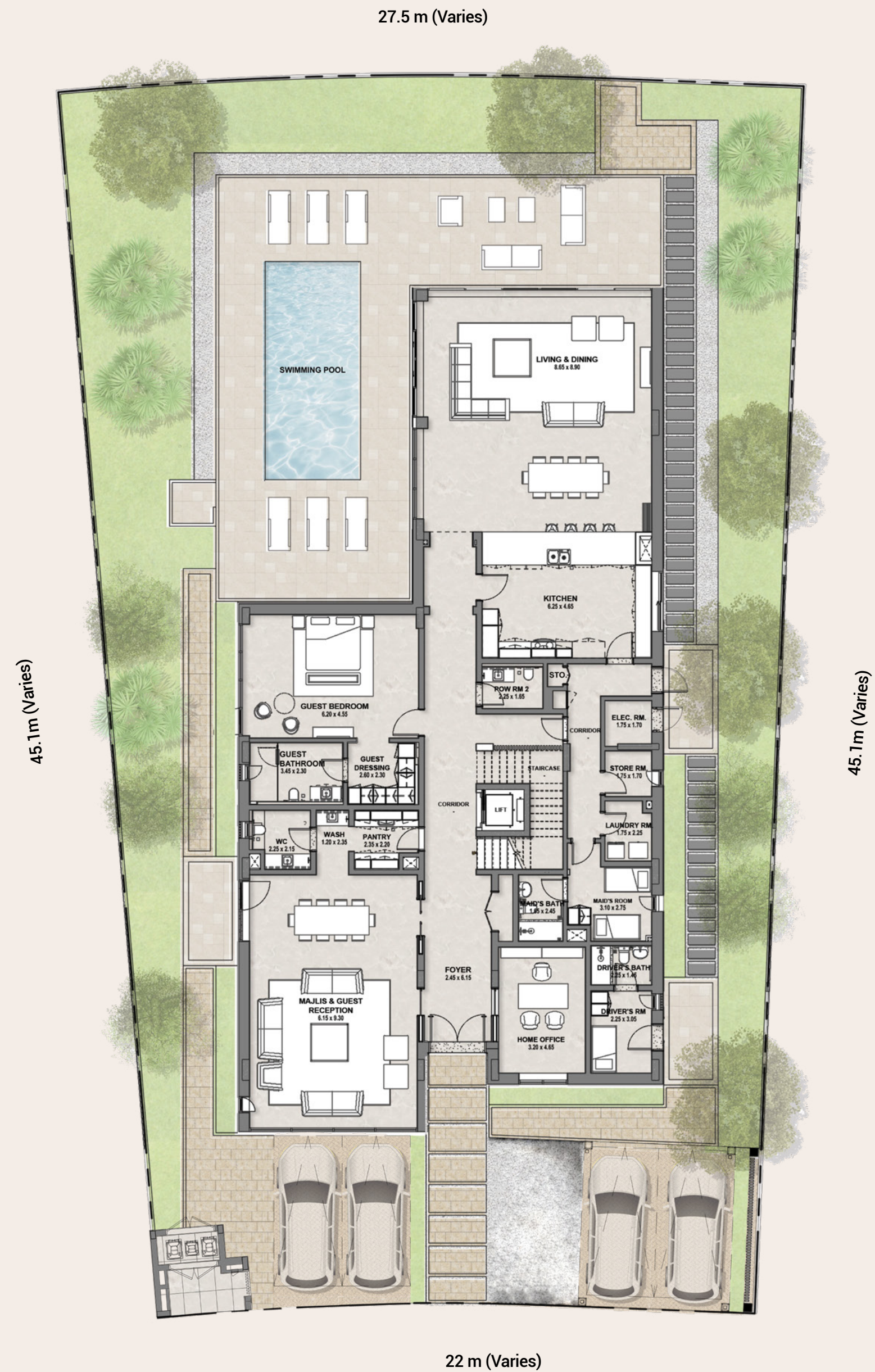
Rise above and expand your mind in luxury living spread across three floors as you nurture your connection to nature.





095

5 BR-MINIMAL GROUND FLOOR

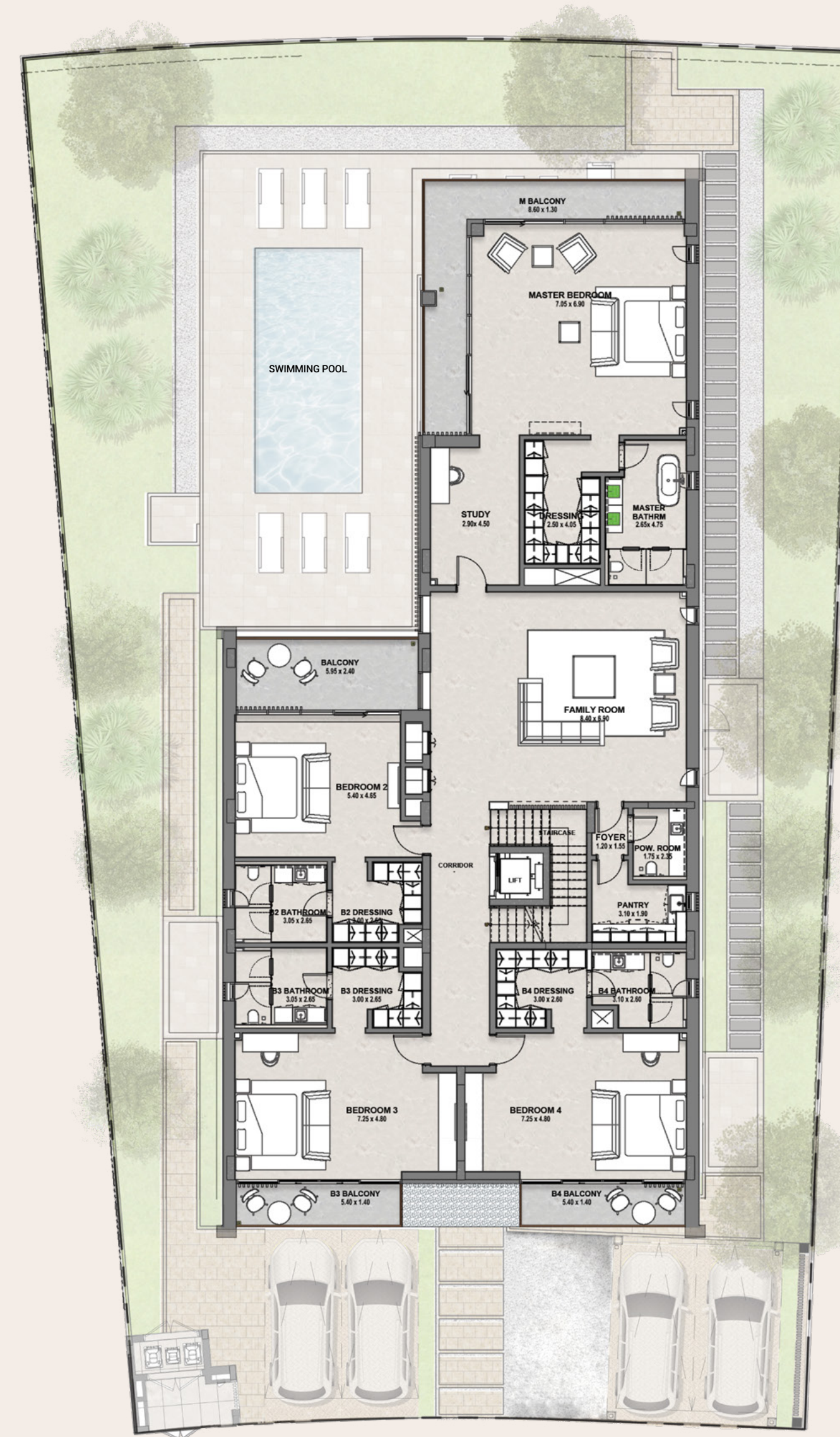


NO. OF BEDROOMS	05
FLOOR CONFIGURATION	G+1+Roof
TOTAL SELLABLE AREA	10,487 sqft
PLOT SIZE	11,176 sqft*

* Starting from

All materials, dimensions, and drawings are approximate only, including actual areas. / Information is subject to change at developer's discretion, without notice, and developer reserves the right to make revisions without liability. / All images used are for illustrative purposes only and do not represent the actual size, features, specifications, fittings, and furnishings.

5 BR-MINIMAL FIRST FLOOR

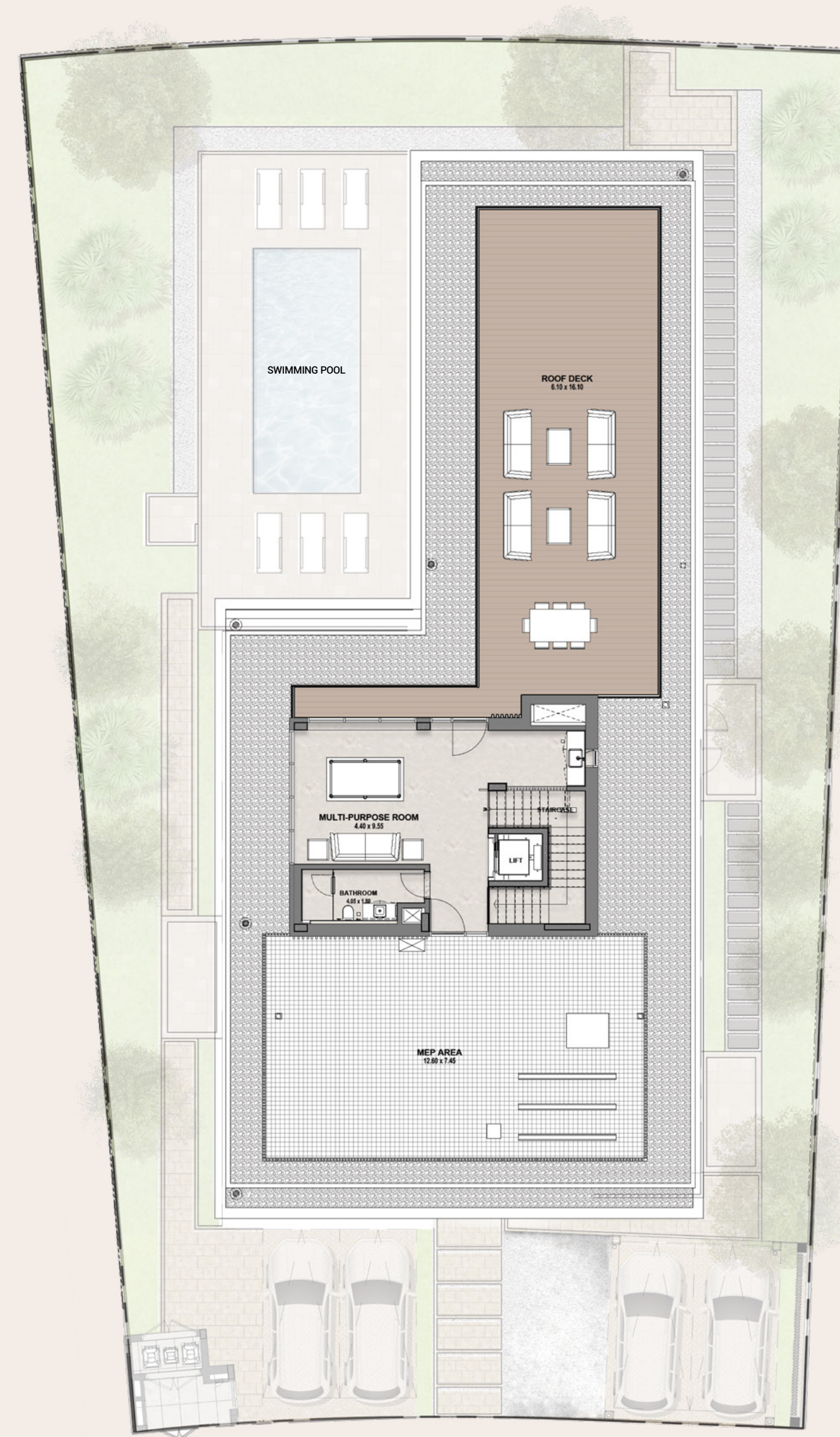


NO. OF BEDROOMS	05
FLOOR CONFIGURATION	G+1+Roof
TOTAL SELLABLE AREA	10,487 sqft
PLOT SIZE	11,176 sqft*

* Starting from

All materials, dimensions, and drawings are approximate only, including actual areas. / Information is subject to change at developer's discretion, without notice, and developer reserves the right to make revisions without liability. / All images used are for illustrative purposes only and do not represent the actual size, features, specifications, fittings, and furnishings.

5 BR-MINIMAL ROOF FLOOR



NO. OF BEDROOMS	05
FLOOR CONFIGURATION	G+1+Roof
TOTAL SELLABLE AREA	10,487 sqft
PLOT SIZE	11,176 sqft*

* Starting from

All materials, dimensions, and drawings are approximate only, including actual areas. / Information is subject to change at developer's discretion, without notice, and developer reserves the right to make revisions without liability. / All images used are for illustrative purposes only and do not represent the actual size, features, specifications, fittings, and furnishings.



REEM HILLS

FOR THOSE WHO SEEK
THE ULTIMATE THAT
LIFE HAS TO OFFER





Reem Hills is a Q Properties development under the umbrella of Q Holding.

It is a gated community in a truly unique location on Abu Dhabi's Reem Island, designed to allow residents to indulge their senses in a unique and luxurious environment by providing an escape from the pressures of today's fast-paced life.

Q Properties provides sustainable living solutions that help shape the growth of Abu Dhabi, catering to a diverse population from different cultures and designing luxury homes that evoke an affluent quality of life, building a firm foundation from which citizens and residents can be part of ground-breaking lifestyles, applying environmentally aware construction and maintenance practices that work seamlessly with life, and ultimately improve it.
