

REFLECTION

ABU DHABI

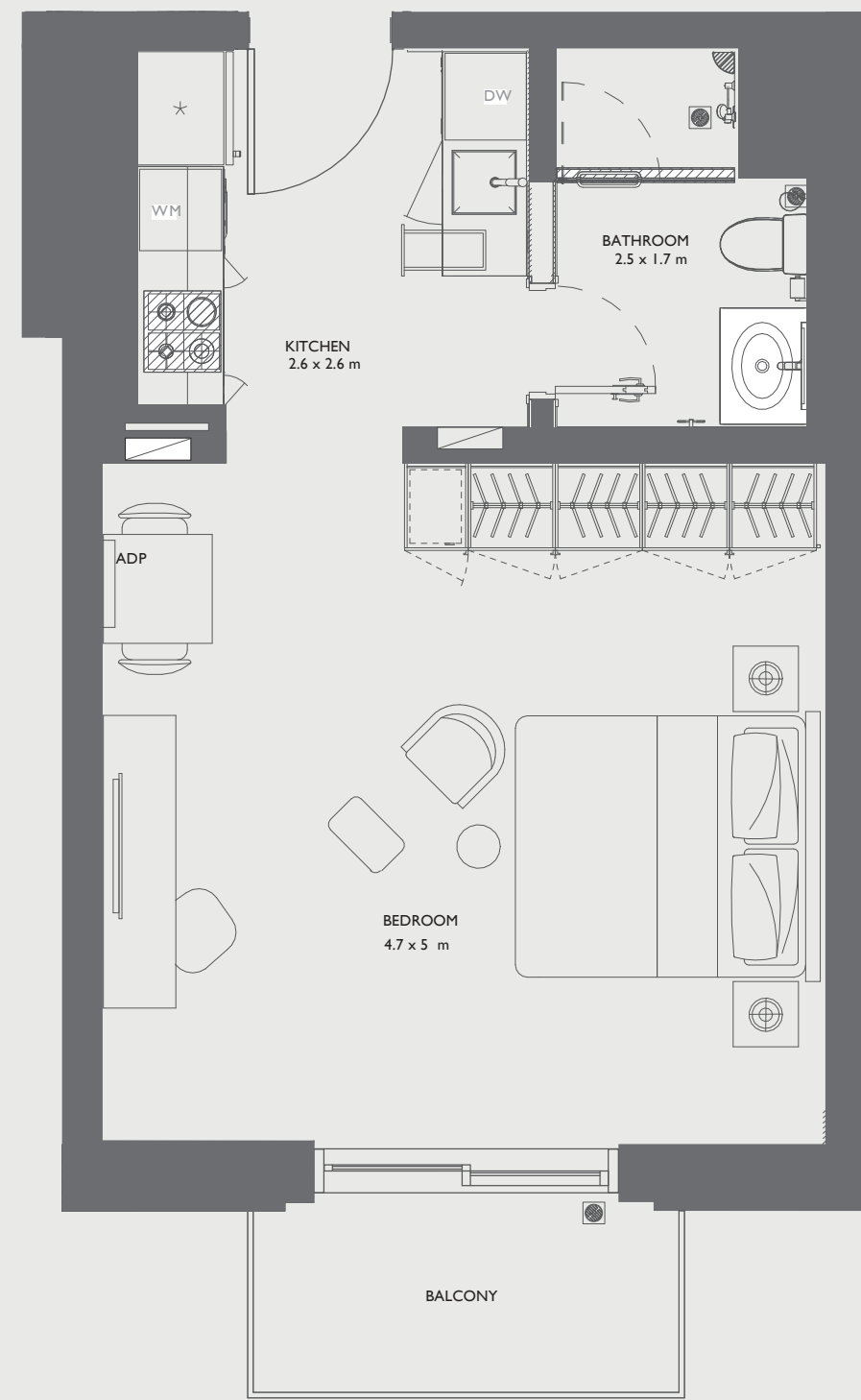
CAPITAL LIVING ON REEM

# STUDIO

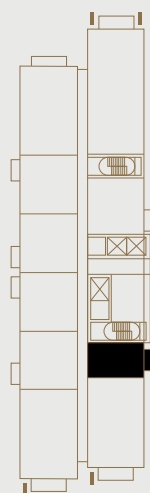
## TYPE

### SI

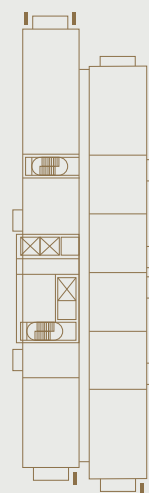
— Apartment area : 37.06 m<sup>2</sup>  
Balcony area : 4.48 m<sup>2</sup>



SEA VIEW



PARK VIEW



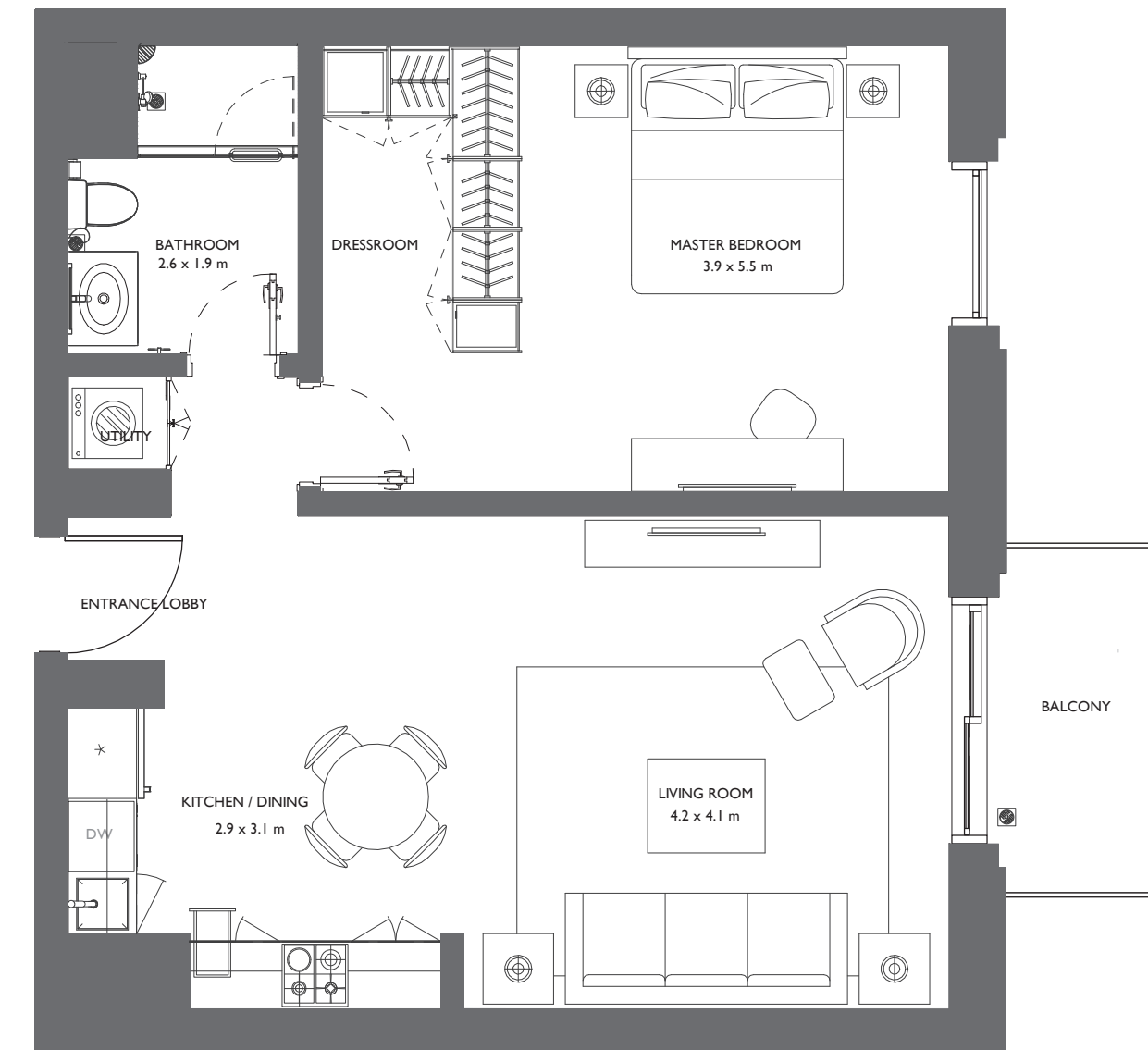
SEA VIEW

# APARTMENT

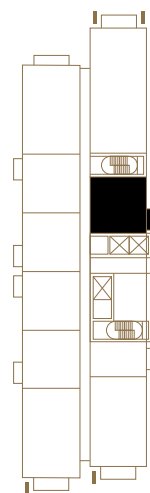
## TYPE

### IBI

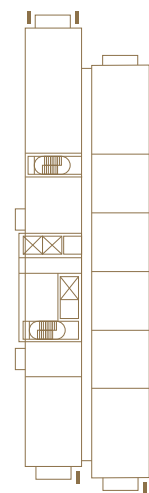
— Apartment area : 61.77 m<sup>2</sup>  
Balcony area : 4.48 m<sup>2</sup>



SEA VIEW



PARK VIEW



SEA VIEW

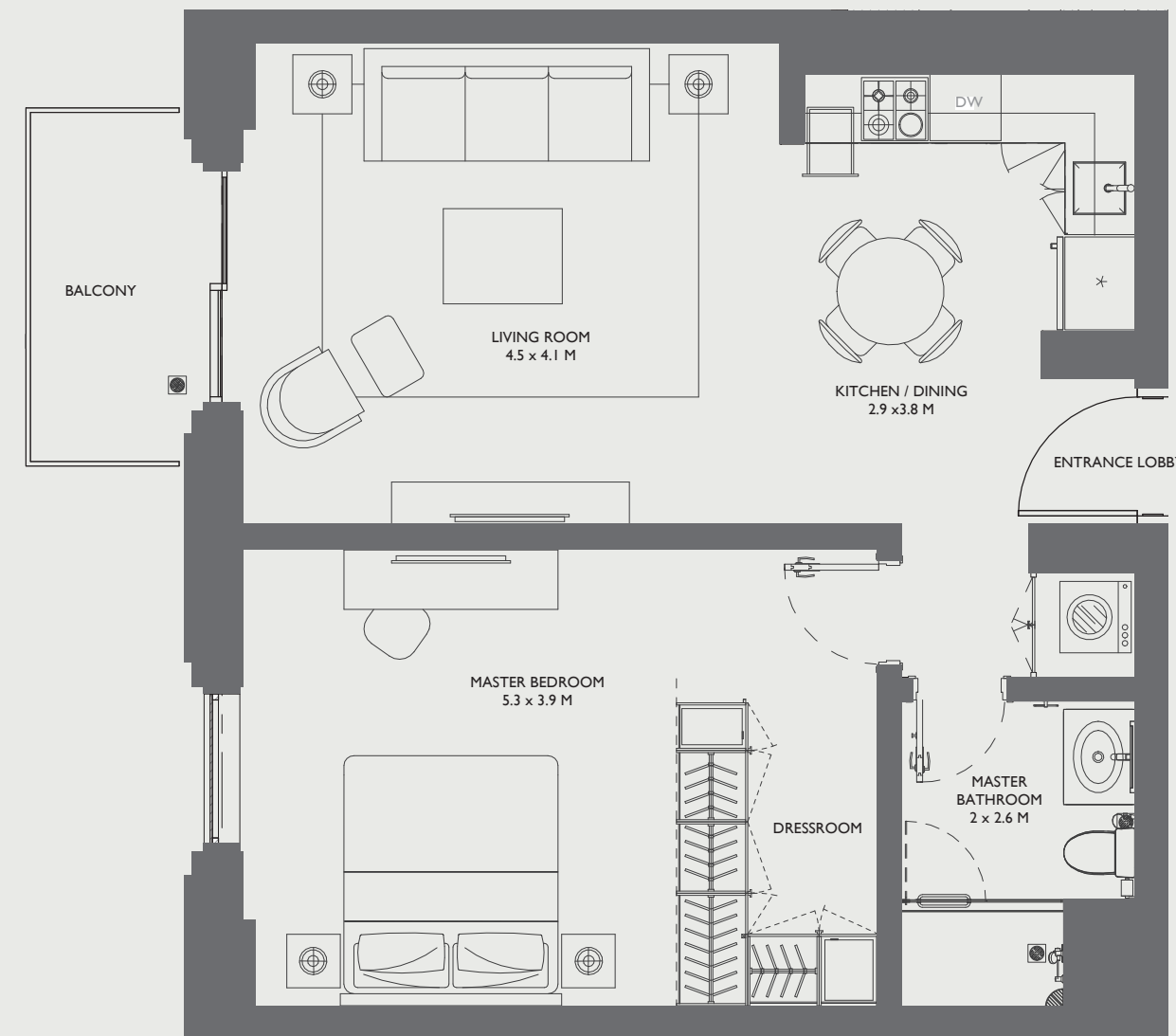
Note that this floor plan was produced prior to the completion of construction and is indicative only and not to scale. Change s may be made during the development and areas, fittings, finishes and specifications are subject to change without notice in accordance with the provision of the Contract of Sale. The furniture depicted is not included with any sale and should not be taken to indicate the final positions of power points, TV connections etc. Prospective purchasers must rely on their own enquiries from time to time. Bulkheads necessary for services and structure are not depicted.

# APARTMENT

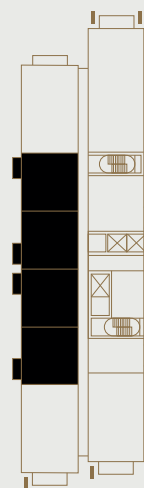
## TYPE

### IB2

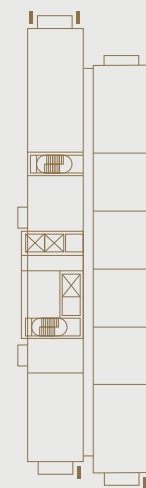
— Apartment area : 60.83 m<sup>2</sup>  
Balcony area : 4.48 m<sup>2</sup>



SEA VIEW



PARK VIEW



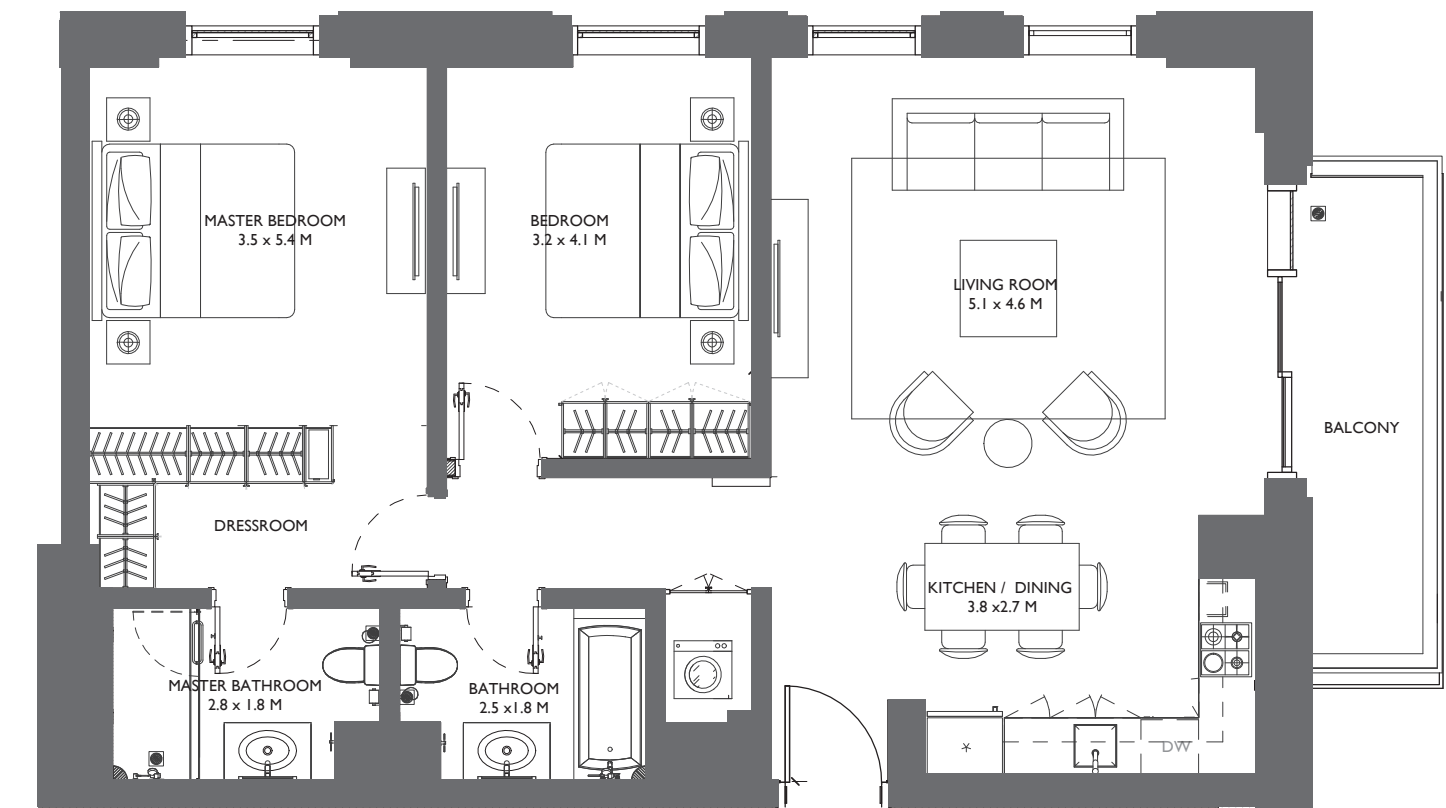
SEA VIEW

# APARTMENT

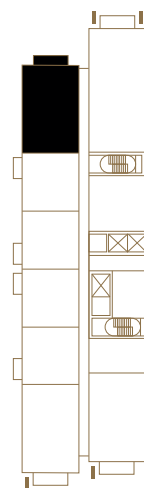
## TYPE

### 2BI

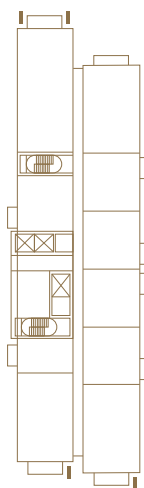
— Apartment area : 91.64 m<sup>2</sup>  
Balcony area : 7.53 m<sup>2</sup>



SEA VIEW



PARK VIEW



SEA VIEW

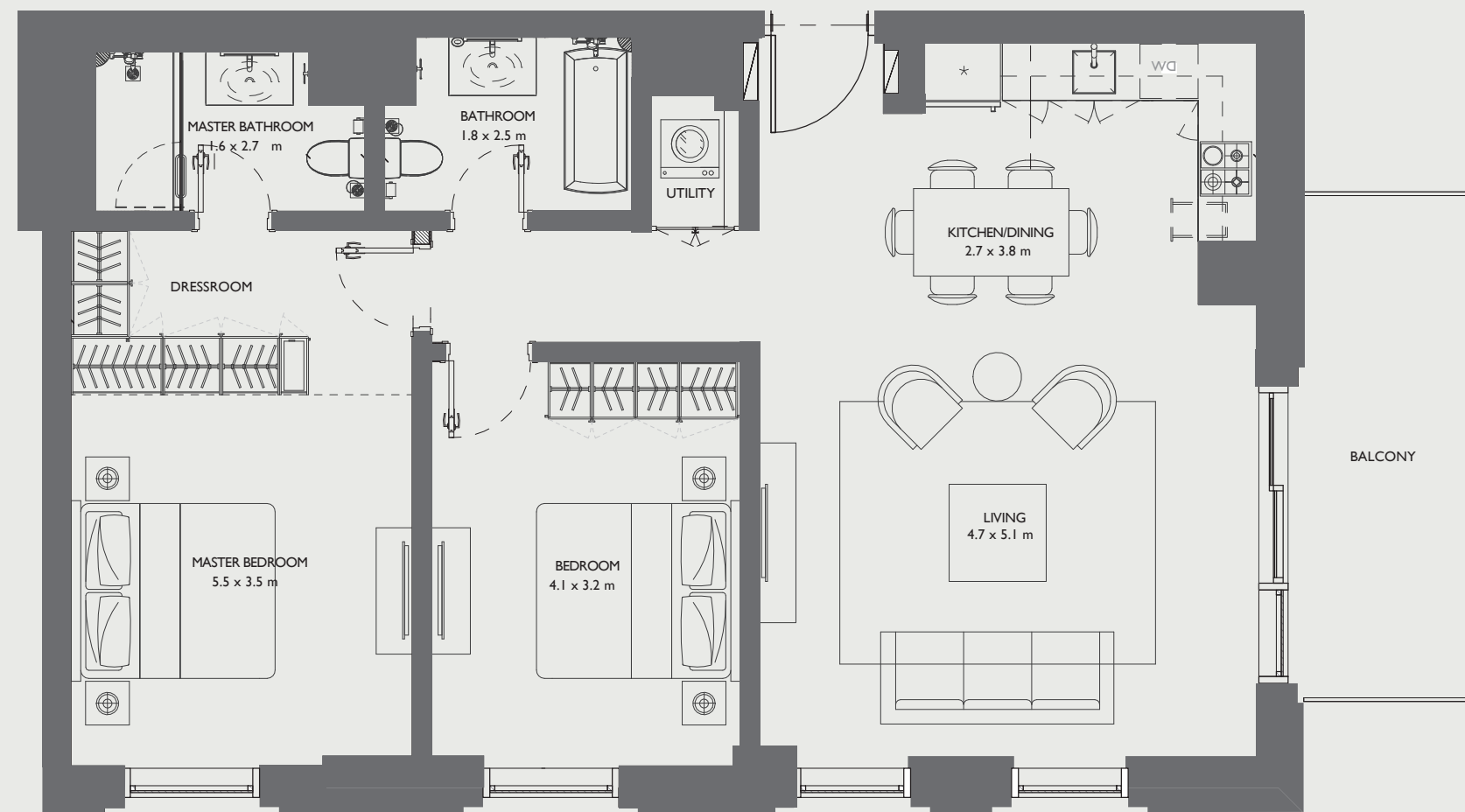
Note that this floor plan was produced prior to the completion of construction and is indicative only and not to scale. Changes may be made during the development and areas, fittings, finishes and specifications are subject to change without notice in accordance with the provision of the Contract of Sale. The furniture depicted is not included with any sale and should not be taken to indicate the final positions of power points, TV connections etc. Prospective purchasers must rely on their own enquiries from time to time. Bulkheads necessary for services and structure are not depicted.

# APARTMENT

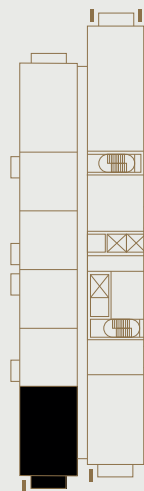
## TYPE

### 2BI.1

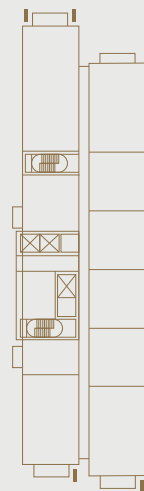
Apartment area : 91.35 m<sup>2</sup>  
Balcony area : 10.16 m<sup>2</sup>



SEA VIEW



PARK VIEW



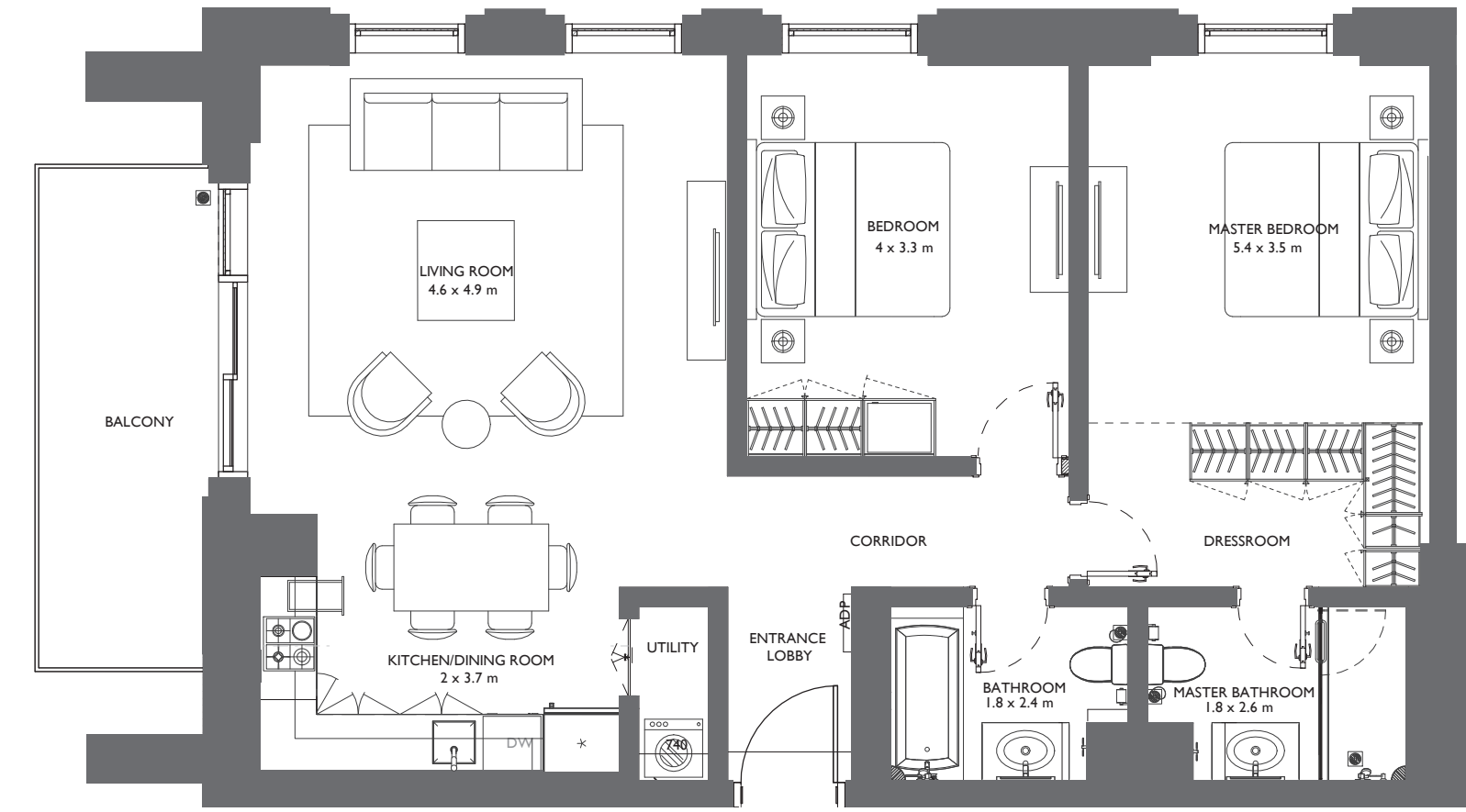
SEA VIEW

# APARTMENT

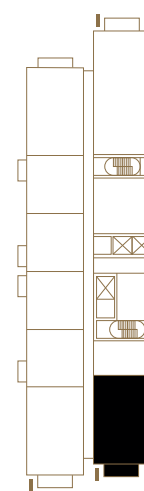
## TYPE

### 2B2

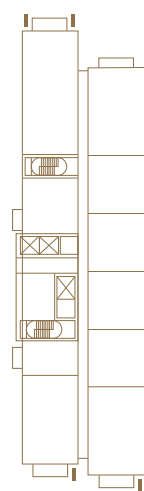
Apartment area : 91.96 m<sup>2</sup>  
Balcony area : 10.16 m<sup>2</sup>



SEA VIEW



PARK VIEW



SEA VIEW

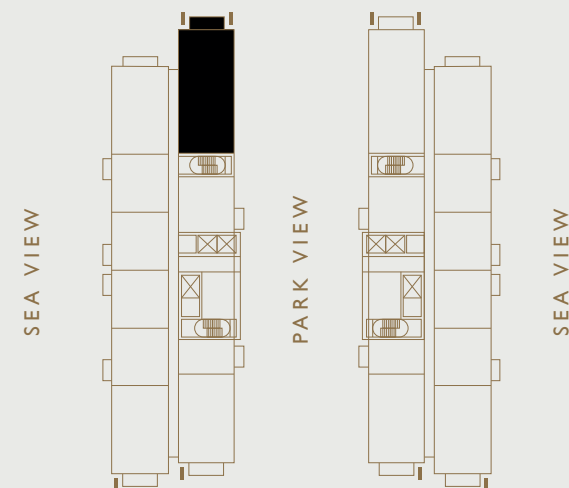
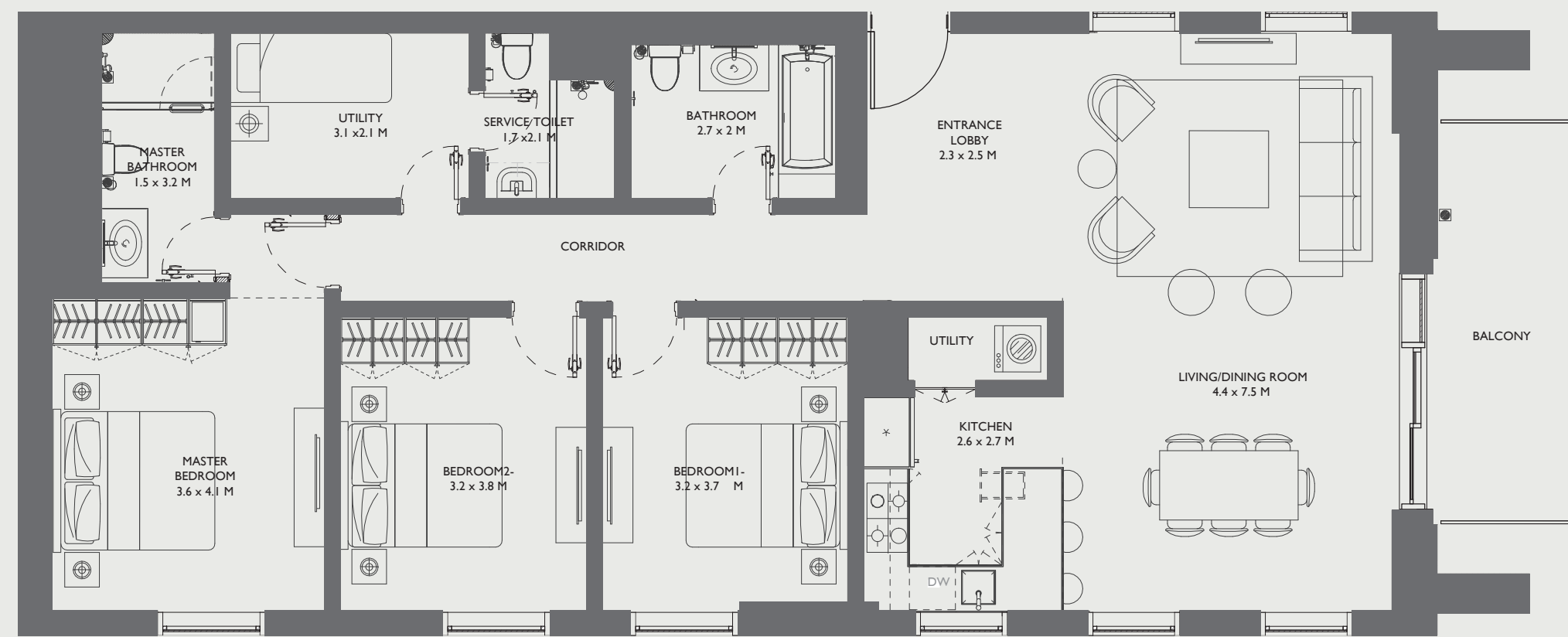
Note that this floor plan was produced prior to the completion of construction and is indicative only and not to scale. Changes may be made during the development and areas, fittings, finishes and specifications are subject to change without notice in accordance with the provision of the Contract of Sale. The furniture depicted is not included with any sale and should not be taken to indicate the final positions of power points, TV connections etc. Prospective purchasers must rely on their own enquiries from time to time. Bulkheads necessary for services and structure are not depicted.

# APARTMENT

## TYPE

### 3B1

Apartment area : 130.50 m<sup>2</sup>  
Balcony area : 10.16 m<sup>2</sup>

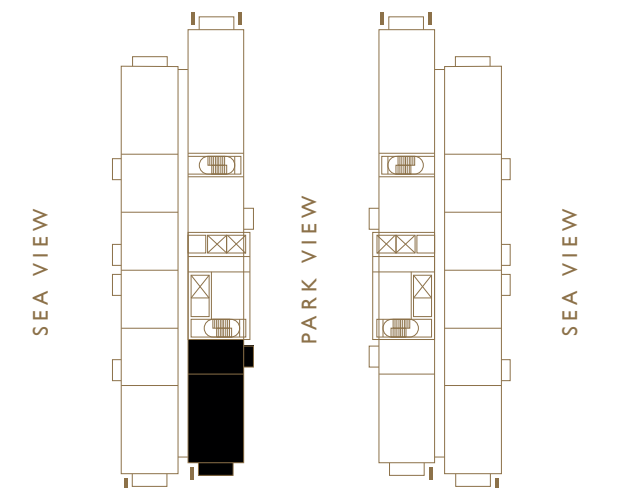
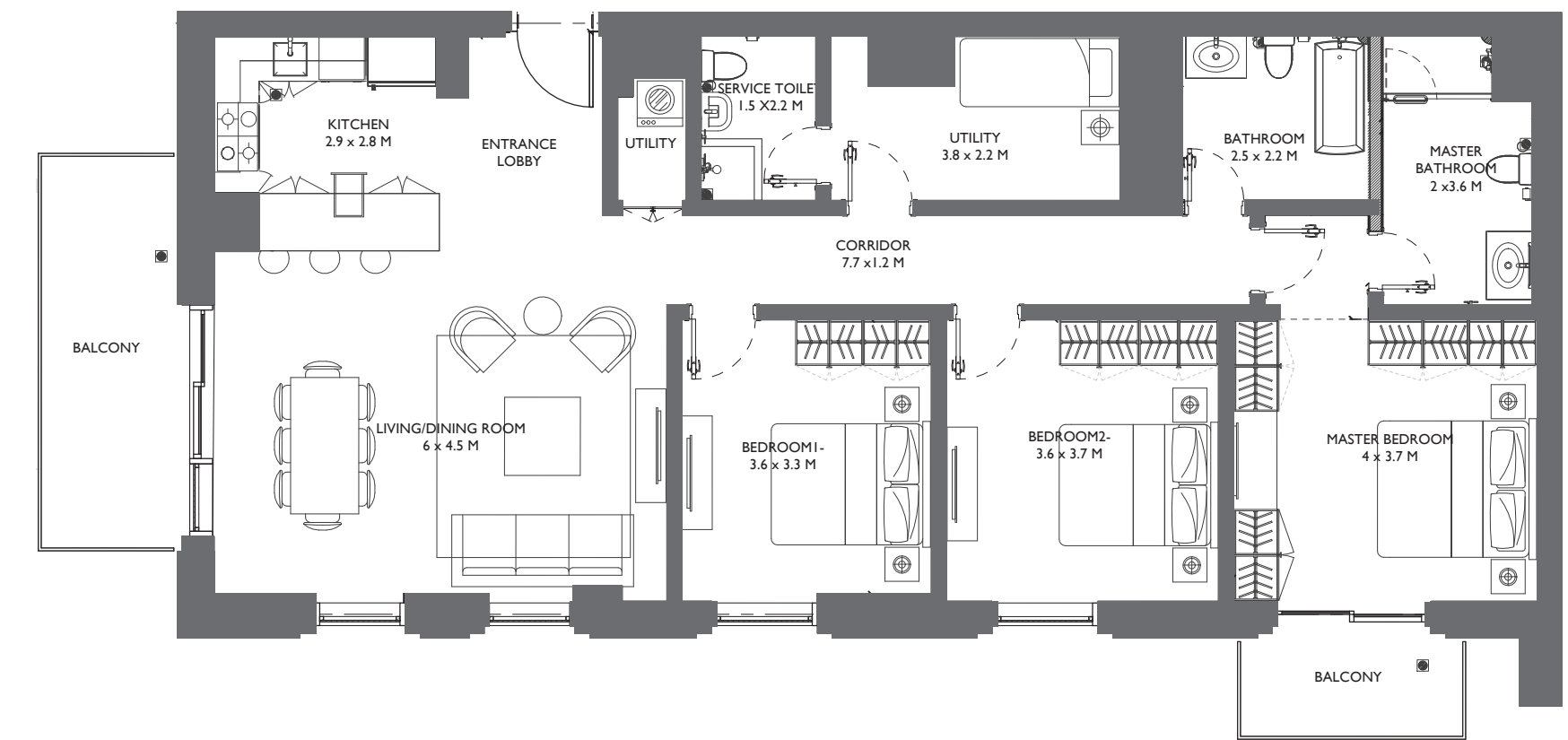


# APARTMENT

## TYPE

### 3B2

Apartment area : 129.41 m<sup>2</sup>  
Balcony area : 10.16 m<sup>2</sup>



Note that this floor plan was produced prior to the completion of construction and is indicative only and not to scale. Changes may be made during the development and areas, fittings, finishes and specifications are subject to change without notice in accordance with the provision of the Contract of Sale. The furniture depicted is not included with any sale and should not be taken to indicate the final positions of power points, TV connections etc. Prospective purchasers must rely on their own enquiries from time to time. Balconies necessary for services and structure are not depicted.



800 ALDAR  
ALDAR.COM