

# WEYBRIDGE GARDENS

F I V E

LEGACY EDITION



LEOS

The background is a solid teal color with a large, detailed illustration of a flower, possibly a peony, rendered in a lighter shade of teal. The flower is the central focus, with many layers of petals. The text 'FLOOR LEVELS' is centered over the flower.

# FLOOR LEVELS



## LEVELS 1 - 12

TYPICAL FLOOR UNITS

- STUDIO
- 1 BEDROOM
- 2 BEDROOM
- 3 BEDROOM

### DISCLAIMER

All plans and 3D visualizations are based on conceptual design and are shown for illustration purposes only. Unit layouts are indicative, not to scale, and subject to change without prior notice. All dimensions, if shown, are approximate and exclude all wall finishes and construction tolerances. Furnishings & accessories shown are for representation only. The final built-up areas may vary from the official measurements issued by the 3rd party survey company accredited by the Dubai land department. The developer reserves the right to make any changes on any part of this document if & when they deem necessary.

The background is a light, muted green color. It features several ginkgo leaves scattered across the page. The leaves are semi-transparent and have a distinct fan-like shape with fine, parallel veins radiating from a central point. One large leaf is positioned in the lower-left quadrant, while others are smaller and located in the top-left, top-center, top-right, and bottom-right areas.

# FLOOR PLANS



STUDIO  
APARTMENTS

# STUDIO

UNIT 02 | TYPICAL UNIT TYPE 1A

LEVELS 1 - 12  
FLOOR PLATE



### TOTAL AREA

476.41 sq.ft.  
44.26 sq.m.

### TOTAL INTERNAL AREA

370.92 sq.ft.  
34.46 sq.m.

### TOTAL EXTERNAL AREA

105.49 sq.ft.  
9.80 sq.m.



#### DISCLAIMER

All plans and 3D visualizations are based on conceptual design and are shown for illustration purposes only. Unit layouts are indicative, not to scale, and subject to change without prior notice. All dimensions, if shown, are approximate and exclude all wall finishes and construction tolerances. Furnishings & accessories shown are for representation only. The final built-up areas may vary from the official measurements issued by the 3rd party survey company accredited by the Dubai land department. The developer reserves the right to make any changes on any part of this document if & when they deem necessary.

# STUDIO

UNIT 07 | TYPICAL UNIT TYPE 1B

LEVELS 1 - 12  
FLOOR PLATE



### TOTAL AREA

462.20 sq.ft.

42.94 sq.m.

### TOTAL INTERNAL AREA

371.03 sq.ft.

34.47 sq.m.

### TOTAL EXTERNAL AREA

91.17 sq.ft.

8.47 sq.m.



#### DISCLAIMER

All plans and 3D visualizations are based on conceptual design and are shown for illustration purposes only. Unit layouts are indicative, not to scale, and subject to change without prior notice. All dimensions, if shown, are approximate and exclude all wall finishes and construction tolerances. Furnishings & accessories shown are for representation only. The final built-up areas may vary from the official measurements issued by the 3rd party survey company accredited by the Dubai land department. The developer reserves the right to make any changes on any part of this document if & when they deem necessary.

The background is a solid teal color with a faint, repeating pattern of stylized flowers or leaves. The pattern is centered and covers the entire page.

# 1 BEDROOM APARTMENTS

# 1 BEDROOM

UNIT 01 | TYPICAL UNIT TYPE 01

LEVELS 1 - 12  
FLOOR PLATE



## TOTAL AREA

852.39 sq.ft  
79.19 sq.m.

## TOTAL INTERNAL AREA

630.98 sq.ft  
58.62 sq.m.

## TOTAL EXTERNAL AREA

221.41 sq.ft  
20.57 sq.m.



### DISCLAIMER

All plans and 3D visualizations are based on conceptual design and are shown for illustration purposes only. Unit layouts are indicative, not to scale, and subject to change without prior notice. All dimensions, if shown, are approximate and exclude all wall finishes and construction tolerances. Furnishings & accessories shown are for representation only. The final built-up areas may vary from the official measurements issued by the 3rd party survey company accredited by the Dubai land department. The developer reserves the right to make any changes on any part of this document if & when they deem necessary.

# 1 BEDROOM

UNIT 10 | TYPICAL UNIT TYPE 02

LEVELS 1 - 12  
FLOOR PLATE



## TOTAL AREA

945.93 sq.ft.  
87.88 sq.m.

## TOTAL INTERNAL AREA

691.37 sq.ft.  
64.23 sq.m.

## TOTAL EXTERNAL AREA

254.57 sq.ft.  
23.65 sq.m.



### DISCLAIMER

All plans and 3D visualizations are based on conceptual design and are shown for illustration purposes only. Unit layouts are indicative, not to scale, and subject to change without prior notice. All dimensions, if shown, are approximate and exclude all wall finishes and construction tolerances. Furnishings & accessories shown are for representation only. The final built-up areas may vary from the official measurements issued by the 3rd party survey company accredited by the Dubai land department. The developer reserves the right to make any changes on any part of this document if & when they deem necessary.

# 1 BEDROOM

UNIT 11 | TYPICAL UNIT TYPE 03

LEVELS 1 - 12  
FLOOR PLATE



## TOTAL AREA

882.43 sq.ft.

81.98 sq.m.

## TOTAL INTERNAL AREA

707.94 sq.ft.

65.77 sq.m.

## TOTAL EXTERNAL AREA

174.48 sq.ft.

16.21 sq.m.



### DISCLAIMER

All plans and 3D visualizations are based on conceptual design and are shown for illustration purposes only. Unit layouts are indicative, not to scale, and subject to change without prior notice. All dimensions, if shown, are approximate and exclude all wall finishes and construction tolerances. Furnishings & accessories shown are for representation only. The final built-up areas may vary from the official measurements issued by the 3rd party survey company accredited by the Dubai land department. The developer reserves the right to make any changes on any part of this document if & when they deem necessary.



2 BEDROOM  
APARTMENTS

# 2 BEDROOM

UNIT 12 | TYPICAL UNIT TYPE 01

LEVELS 1 - 12  
FLOOR PLATE



### TOTAL AREA

1,150.66 sq.ft.  
106.90 sq.m.

### TOTAL INTERNAL AREA

924.40 sq.ft.  
85.88 sq.m.

### TOTAL EXTERNAL AREA

226.26 sq.ft.  
21.02 sq.m.



#### DISCLAIMER

All plans and 3D visualizations are based on conceptual design and are shown for illustration purposes only. Unit layouts are indicative, not to scale, and subject to change without prior notice. All dimensions, if shown, are approximate and exclude all wall finishes and construction tolerances. Furnishings & accessories shown are for representation only. The final built-up areas may vary from the official measurements issued by the 3rd party survey company accredited by the Dubai land department. The developer reserves the right to make any changes on any part of this document if & when they deem necessary.

# 2 BEDROOM

UNIT 14 | TYPICAL UNIT TYPE 02

LEVELS 1 - 12  
FLOOR PLATE



### TOTAL AREA

1,241.83 sq.ft  
115.37 sq.m.

### TOTAL INTERNAL AREA

980.38 sq.ft  
91.08 sq.m.

### TOTAL EXTERNAL AREA

261.46 sq.ft  
24.29 sq.m.



#### DISCLAIMER

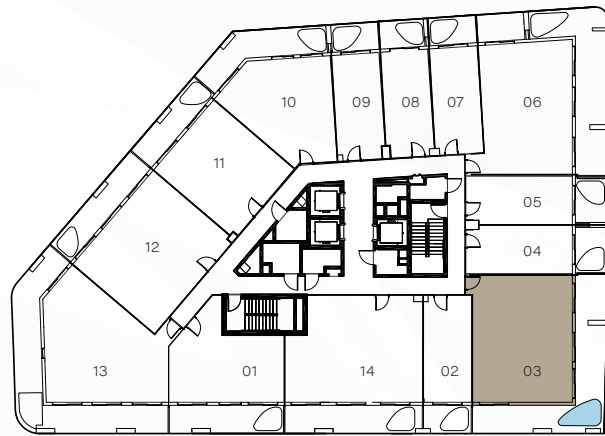
All plans and 3D visualizations are based on conceptual design and are shown for illustration purposes only. Unit layouts are indicative, not to scale, and subject to change without prior notice. All dimensions, if shown, are approximate and exclude all wall finishes and construction tolerances. Furnishings & accessories shown are for representation only. The final built-up areas may vary from the official measurements issued by the 3rd party survey company accredited by the Dubai land department. The developer reserves the right to make any changes on any part of this document if & when they deem necessary.

# 3 BEDROOM APARTMENTS

# 3 BEDROOM

UNIT 03 | TYPICAL UNIT TYPE 01

LEVELS 1 - 12  
FLOOR PLATE



### TOTAL AREA

1,474.98 sq.ft.  
137.03 sq.m.

### TOTAL INTERNAL AREA

954.11 sq.ft.  
88.64 sq.m.

### TOTAL EXTERNAL AREA

520.87 sq.ft.  
48.39 sq.m.



#### DISCLAIMER

All plans and 3D visualizations are based on conceptual design and are shown for illustration purposes only. Unit layouts are indicative, not to scale, and subject to change without prior notice. All dimensions, if shown, are approximate and exclude all wall finishes and construction tolerances. Furnishings & accessories shown are for representation only. The final built-up areas may vary from the official measurements issued by the 3rd party survey company accredited by the Dubai land department. The developer reserves the right to make any changes on any part of this document if & when they deem necessary.

# 3 BEDROOM

UNIT 06 | TYPICAL UNIT TYPE 02

LEVELS 1 - 12  
FLOOR PLATE



### TOTAL AREA

1,480.36 sq.ft.  
137.53 sq.m.

### TOTAL INTERNAL AREA

920.85 sq.ft.  
85.55 sq.m.

### TOTAL EXTERNAL AREA

559.51 sq.ft.  
51.98 sq.m.



#### DISCLAIMER

All plans and 3D visualizations are based on conceptual design and are shown for illustration purposes only. Unit layouts are indicative, not to scale, and subject to change without prior notice. All dimensions, if shown, are approximate and exclude all wall finishes and construction tolerances. Furnishings & accessories shown are for representation only. The final built-up areas may vary from the official measurements issued by the 3rd party survey company accredited by the Dubai land department. The developer reserves the right to make any changes on any part of this document if & when they deem necessary.

# 3 BEDROOM

UNIT 13 | TYPICAL UNIT TYPE 03

LEVELS 1 - 12  
FLOOR PLATE



### TOTAL AREA

1,556.14 sq.ft.  
144.57 sq.m.

### TOTAL INTERNAL AREA

968.21 sq.ft.  
89.95 sq.m.

### TOTAL EXTERNAL AREA

587.92 sq.ft.  
54.62 sq.m.



#### DISCLAIMER

All plans and 3D visualizations are based on conceptual design and are shown for illustration purposes only. Unit layouts are indicative, not to scale, and subject to change without prior notice. All dimensions, if shown, are approximate and exclude all wall finishes and construction tolerances. Furnishings & accessories shown are for representation only. The final built-up areas may vary from the official measurements issued by the 3rd party survey company accredited by the Dubai land department. The developer reserves the right to make any changes on any part of this document if & when they deem necessary.

# WEYBRIDGE GARDENS

F I V E

LEGACY EDITION

UAE TOLL-FREE 800 535  
[WWW.LEOSDEVELOPMENTS.COM](http://WWW.LEOSDEVELOPMENTS.COM)



LEOS