

EVORA

RESIDENCES

A NEW ERA IN AL FURJAN





**EVORA**  
RESIDENCES

## 1 Bedroom Apartments

Size Range from available from  
766.50 sq.ft. - 1,013 sq.ft.

Total Number of Units  
10

APARTMENT PLANS

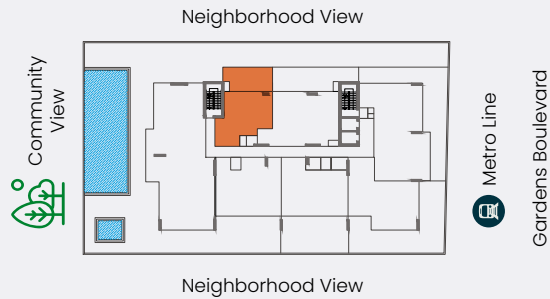
**1 BHK - TYPE A**

Internal Area 674.15 sq.ft.  
External Terrace Area 338.74 sq.ft.

**Total 1012.89 sq.ft.**



TYPICAL FLOOR PLATE (1<sup>ST</sup> FLOOR)



UNIT NUMBERS

104



DISCLAIMERS

1. All dimensions are in imperial and metric, and measured from finish to finish excluding construction tolerances. 2. All materials, dimensions and drawings are approximate only. 3. Information is subject to change without notice, at developer's absolute discretion. 4. Actual area may vary from the stated area. 5. Drawings are not to scale. 6. All images used are for illustrative purposes only and do not represent the actual size, features, specifications, fittings and furnishing. 7. The developer reserves the right to make revisions or alterations, at its absolute discretion, without any liability whatsoever.

APARTMENT PLANS

**1 BHK - TYPE B**

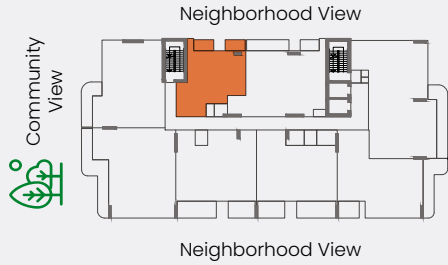
Internal Area 674.15 sq.ft.

External Terrace Area 92.35 sq.ft.

**Total 766.50 sq.ft.**

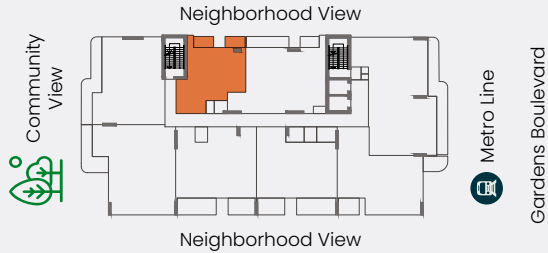
TYPICAL FLOOR PLATE (2, 3, 6, 7, & 10<sup>TH</sup> floor)

Unit Numbers: 207, 307, 607, 707, 1007



TYPICAL FLOOR PLATE (4, 5, 8, & 9<sup>TH</sup> floor)

Unit Numbers: 407, 507, 807, 907



DISCLAIMERS

1. All dimensions are in imperial and metric, and measured from finish to finish excluding construction tolerances. 2. All materials, dimensions and drawings are approximate only. 3. Information is subject to change without notice, at developer's absolute discretion. 4. Actual area may vary from the stated area. 5. Drawings are not to scale. 6. All images used are for illustrative purposes only and do not represent the actual size, features, specifications, fittings and furnishing. 7. The developer reserves the right to make revisions or alterations, at its absolute discretion, without any liability whatsoever.



**EVORA**  
RESIDENCES

## 2 Bedroom Apartments

Size Range from available from  
1,206 sq.ft. - 2,238 sq.ft.

Number of Units  
57

APARTMENT PLANS

**2 BHK - TYPE A**

Internal Area 1,065.21 sq.ft.

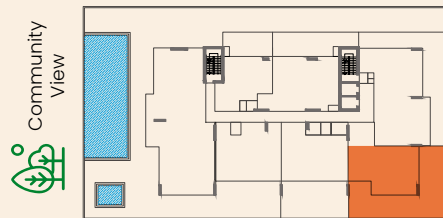
External Terrace Area 1,173.38 sq.ft.

**Total 2,238.59 sq.ft.**



TYPICAL FLOOR PLATE (1<sup>ST</sup> FLOOR)

Neighborhood View



Neighborhood View



Gardens Boulevard

UNIT NUMBERS

102



DISCLAIMERS

1. All dimensions are in imperial and metric, and measured from finish to finish excluding construction tolerances. 2. All materials, dimensions and drawings are approximate only. 3. Information is subject to change without notice, at developer's absolute discretion. 4. Actual area may vary from the stated area. 5. Drawings are not to scale. 6. All images used are for illustrative purposes only and do not represent the actual size, features, specifications, fittings and furnishing. 7. The developer reserves the right to make revisions or alterations, at its absolute discretion, without any liability whatsoever.

APARTMENT PLANS

**2 BHK - TYPE B**

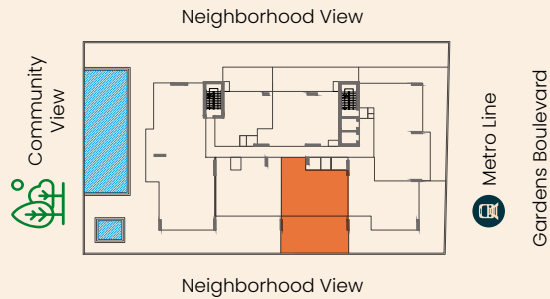
Internal Area 969.41 sq.ft.

External Terrace Area 757.46 sq.ft.

**Total 1,726.87 sq.ft.**



TYPICAL FLOOR PLATE (1<sup>ST</sup> FLOOR)



UNIT NUMBERS

103



DISCLAIMERS

1. All dimensions are in imperial and metric, and measured from finish to finish excluding construction tolerances. 2. All materials, dimensions and drawings are approximate only. 3. Information is subject to change without notice, at developer's absolute discretion. 4. Actual area may vary from the stated area. 5. Drawings are not to scale. 6. All images used are for illustrative purposes only and do not represent the actual size, features, specifications, fittings and furnishing. 7. The developer reserves the right to make revisions or alterations, at its absolute discretion, without any liability whatsoever.

APARTMENT PLANS

**2 BHK - TYPE C**

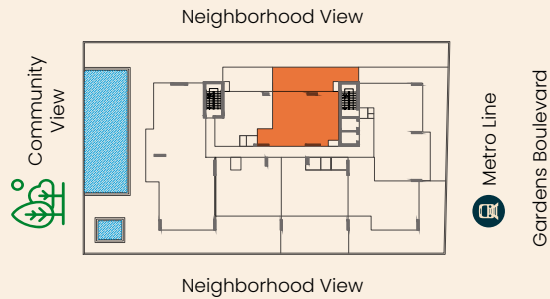
Internal Area 1087.38 sq.ft.

External Terrace Area 551.33 sq.ft.

**Total 1638.71 sq.ft.**



TYPICAL FLOOR PLATE (1<sup>ST</sup> FLOOR)



UNIT NUMBERS

105



DISCLAIMERS

1. All dimensions are in imperial and metric, and measured from finish to finish excluding construction tolerances. 2. All materials, dimensions and drawings are approximate only. 3. Information is subject to change without notice, at developer's absolute discretion. 4. Actual area may vary from the stated area. 5. Drawings are not to scale. 6. All images used are for illustrative purposes only and do not represent the actual size, features, specifications, fittings and furnishing. 7. The developer reserves the right to make revisions or alterations, at its absolute discretion, without any liability whatsoever.

## APARTMENT PLANS

### 2 BHK - TYPE D

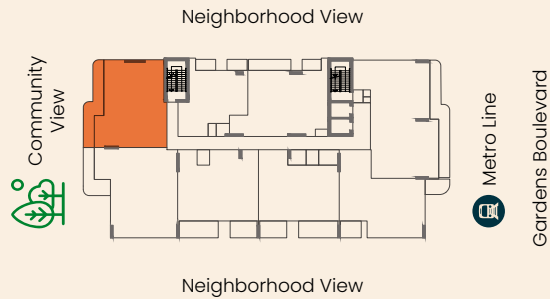
Internal Area 1,104.49 sq.ft.

External Terrace Area 218.29 sq.ft.

**Total 1,322.78 sq.ft.**



### TYPICAL FLOOR PLATE (4, 5, 8, & 10<sup>TH</sup> FLOOR)



### UNIT NUMBERS

406, 506, 806, 906



### DISCLAIMERS

1. All dimensions are in imperial and metric, and measured from finish to finish excluding construction tolerances. 2. All materials, dimensions and drawings are approximate only. 3. Information is subject to change without notice, at developer's absolute discretion. 4. Actual area may vary from the stated area. 5. Drawings are not to scale. 6. All images used are for illustrative purposes only and do not represent the actual size, features, specifications, fittings and furnishing. 7. The developer reserves the right to make revisions or alterations, at its absolute discretion, without any liability whatsoever.

APARTMENT PLANS

**2 BHK - TYPE E**

Internal Area 1,065.20 sq.ft.

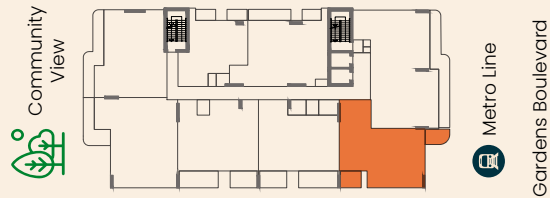
External Terrace Area 148.76 sq.ft.

**Total 1213.96 sq.ft.**



TYPICAL FLOOR PLATE (4, 5, 8 & 9<sup>TH</sup> FLOOR)

Neighborhood View



Neighborhood View

UNIT NUMBERS

402, 502, 802, 902



DISCLAIMERS

1. All dimensions are in imperial and metric, and measured from finish to finish excluding construction tolerances. 2. All materials, dimensions and drawings are approximate only. 3. Information is subject to change without notice, at developer's absolute discretion. 4. Actual area may vary from the stated area. 5. Drawings are not to scale. 6. All images used are for illustrative purposes only and do not represent the actual size, features, specifications, fittings and furnishing. 7. The developer reserves the right to make revisions or alterations, at its absolute discretion, without any liability whatsoever.

## APARTMENT PLANS

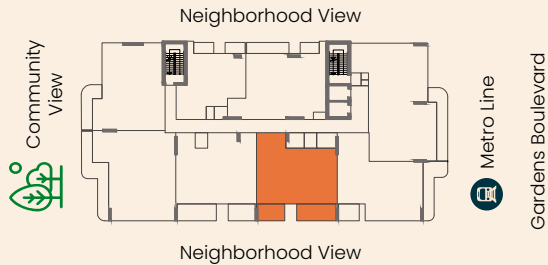
### 2 BHK - TYPE F

Internal Area 969.41 sq.ft.  
External Terrace Area 237.13 sq.ft.

**Total 1,206.54 sq.ft.**

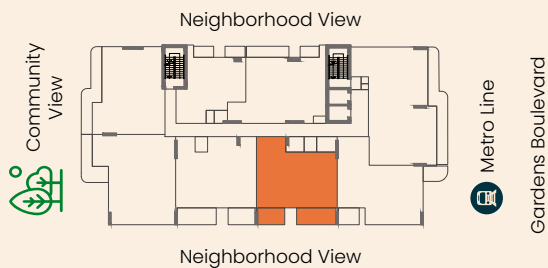
#### TYPICAL FLOOR PLATE (2, 3, 6, 7 & 10<sup>TH</sup> FLOOR)

UNIT NUMBERS : 203, 303, 603, 703, 1003



#### TYPICAL FLOOR PLATE (4, 5, 8 & 9<sup>TH</sup> FLOOR)

UNIT NUMBERS : 403, 503, 803, 903



#### DISCLAIMERS

1. All dimensions are in imperial and metric, and measured from finish to finish excluding construction tolerances. 2. All materials, dimensions and drawings are approximate only. 3. Information is subject to change without notice, at developer's absolute discretion. 4. Actual area may vary from the stated area. 5. Drawings are not to scale. 6. All images used are for illustrative purposes only and do not represent the actual size, features, specifications, fittings and furnishing. 7. The developer reserves the right to make revisions or alterations, at its absolute discretion, without any liability whatsoever.

## APARTMENT PLANS

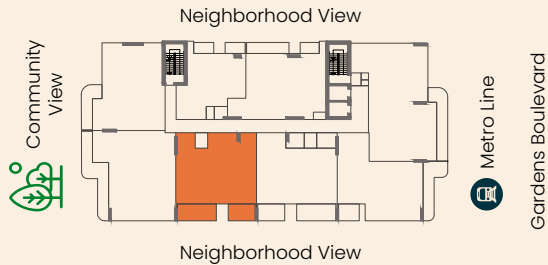
### 2 BHK - TYPE G

Internal Area 1066.28 sq.ft.  
 External Terrace Area 235.84 sq.ft.

**Total 1302.12 sq.ft.**

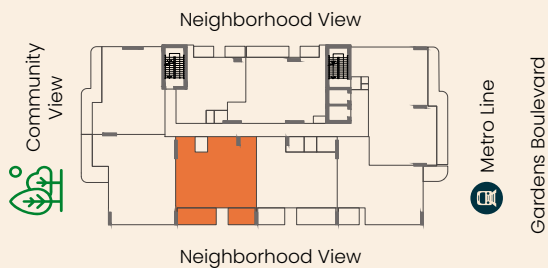
#### TYPICAL FLOOR PLATE (2, 3, 6, 7 & 10<sup>TH</sup> FLOOR)

UNIT NUMBERS : 204, 304, 604, 704, 1004



#### TYPICAL FLOOR PLATE (4, 5, 8 & 9<sup>TH</sup> FLOOR)

UNIT NUMBERS : 404, 504, 804, 904



#### DISCLAIMERS

1. All dimensions are in imperial and metric, and measured from finish to finish excluding construction tolerances. 2. All materials, dimensions and drawings are approximate only. 3. Information is subject to change without notice, at developer's absolute discretion. 4. Actual area may vary from the stated area. 5. Drawings are not to scale. 6. All images used are for illustrative purposes only and do not represent the actual size, features, specifications, fittings and furnishing. 7. The developer reserves the right to make revisions or alterations, at its absolute discretion, without any liability whatsoever.

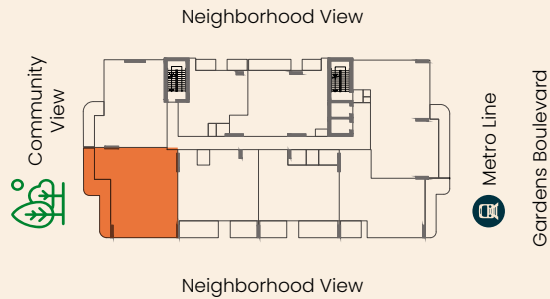
APARTMENT PLANS

**2 BHK - TYPE H**

Internal Area	1,262.17 sq.ft.
External Terrace Area	250.05 sq.ft.
<b>Total</b>	<b>1,512.22 sq.ft.</b>



TYPICAL FLOOR PLATE (2, 3, 6, 7 & 10<sup>TH</sup> FLOOR)



UNIT NUMBERS

205, 305, 605, 705, 1005



DISCLAIMERS

1. All dimensions are in imperial and metric, and measured from finish to finish excluding construction tolerances. 2. All materials, dimensions and drawings are approximate only. 3. Information is subject to change without notice, at developer's absolute discretion. 4. Actual area may vary from the stated area. 5. Drawings are not to scale. 6. All images used are for illustrative purposes only and do not represent the actual size, features, specifications, fittings and furnishing. 7. The developer reserves the right to make revisions or alterations, at its absolute discretion, without any liability whatsoever.

## APARTMENT PLANS

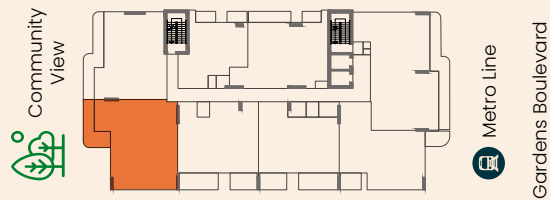
### 2 BHK - TYPE I

Internal Area	1262.19 sq.ft.
External Terrace Area	157.37 sq.ft.
<b>Total</b>	<b>1419.56sq.ft.</b>



## TYPICAL FLOOR PLATE (4, 5, 8 & 9<sup>TH</sup> FLOOR)

Neighborhood View



Neighborhood View

## UNIT NUMBERS

405, 505, 805, 905



## DISCLAIMERS

1. All dimensions are in imperial and metric, and measured from finish to finish excluding construction tolerances. 2. All materials, dimensions and drawings are approximate only. 3. Information is subject to change without notice, at developer's absolute discretion. 4. Actual area may vary from the stated area. 5. Drawings are not to scale. 6. All images used are for illustrative purposes only and do not represent the actual size, features, specifications, fittings and furnishing. 7. The developer reserves the right to make revisions or alterations, at its absolute discretion, without any liability whatsoever.

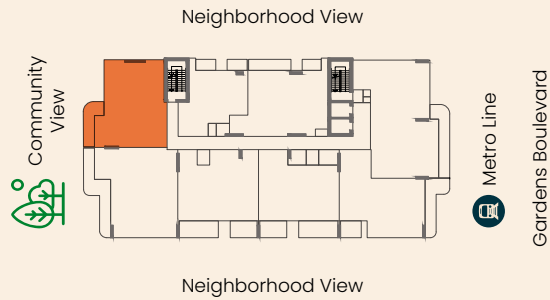
## APARTMENT PLANS

### 2 BHK - TYPE J

Internal Area	1104.49 sq.ft.
External Terrace Area	125.08 sq.ft.
<b>Total</b>	<b>1229.57 sq.ft.</b>



### TYPICAL FLOOR PLATE (2, 3, 6, 7 & 10<sup>TH</sup> FLOOR)



### UNIT NUMBERS

206, 306, 606, 706, 1006



#### DISCLAIMERS

1. All dimensions are in imperial and metric, and measured from finish to finish excluding construction tolerances. 2. All materials, dimensions and drawings are approximate only. 3. Information is subject to change without notice, at developer's absolute discretion. 4. Actual area may vary from the stated area. 5. Drawings are not to scale. 6. All images used are for illustrative purposes only and do not represent the actual size, features, specifications, fittings and furnishing. 7. The developer reserves the right to make revisions or alterations, at its absolute discretion, without any liability whatsoever.

APARTMENT PLANS

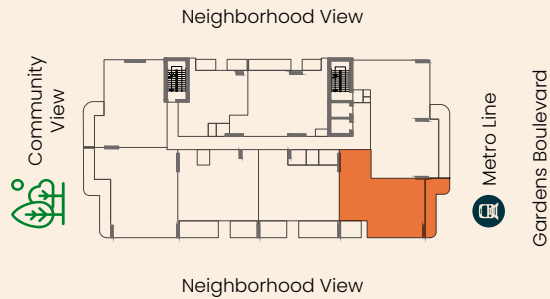
**2 BHK - TYPE K**

Internal Area 1,065.21 sq.ft.  
External Terrace Area 247.57 sq.ft.

**Total 1312.78 sq.ft.**



TYPICAL FLOOR PLATE (2, 3, 6, 7 & 10<sup>TH</sup> FLOOR)



UNIT NUMBERS

202, 302, 602, 702, 1002



DISCLAIMERS

1. All dimensions are in imperial and metric, and measured from finish to finish excluding construction tolerances. 2. All materials, dimensions and drawings are approximate only. 3. Information is subject to change without notice, at developer's absolute discretion. 4. Actual area may vary from the stated area. 5. Drawings are not to scale. 6. All images used are for illustrative purposes only and do not represent the actual size, features, specifications, fittings and furnishing. 7. The developer reserves the right to make revisions or alterations, at its absolute discretion, without any liability whatsoever.

## APARTMENT PLANS

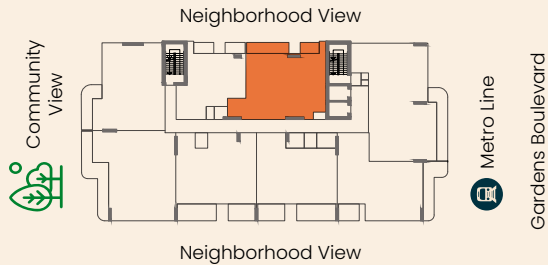
### 2 BHK - TYPE L

Internal Area 1087.38 sq.ft.  
 External Terrace Area 141.87 sq.ft.

**Total 1229.25 sq.ft.**

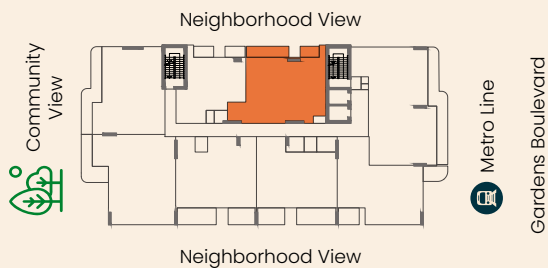
#### TYPICAL FLOOR PLATE (2, 3, 6, 7 & 10<sup>TH</sup> FLOOR)

UNIT NUMBERS : 208, 308, 608, 708, 1008



#### TYPICAL FLOOR PLATE (4, 5, 8 & 9<sup>TH</sup> FLOOR)

UNIT NUMBERS : 408, 508, 808, 908



#### DISCLAIMERS

1. All dimensions are in imperial and metric, and measured from finish to finish excluding construction tolerances. 2. All materials, dimensions and drawings are approximate only. 3. Information is subject to change without notice, at developer's absolute discretion. 4. Actual area may vary from the stated area. 5. Drawings are not to scale. 6. All images used are for illustrative purposes only and do not represent the actual size, features, specifications, fittings and furnishing. 7. The developer reserves the right to make revisions or alterations, at its absolute discretion, without any liability whatsoever.



**EVORA**  
RESIDENCES

### 3 Bedroom Apartments

Size Range from available from  
1,750 sq.ft. - 2,598.62 sq.ft.

Number of Units  
10

APARTMENT PLANS

**3 BHK - TYPE A**

Internal Area 1,563.69 sq.ft.  
External Terrace Area 1,034.96 sq.ft.

**Total 2,598.65 sq.ft.**



TYPICAL FLOOR PLATE (1<sup>ST</sup> FLOOR)



UNIT NUMBERS

101



DISCLAIMERS

1. All dimensions are in imperial and metric, and measured from finish to finish excluding construction tolerances. 2. All materials, dimensions and drawings are approximate only. 3. Information is subject to change without notice, at developer's absolute discretion. 4. Actual area may vary from the stated area. 5. Drawings are not to scale. 6. All images used are for illustrative purposes only and do not represent the actual size, features, specifications, fittings and furnishing. 7. The developer reserves the right to make revisions or alterations, at its absolute discretion, without any liability whatsoever.

APARTMENT PLANS

**3 BHK - TYPE B**

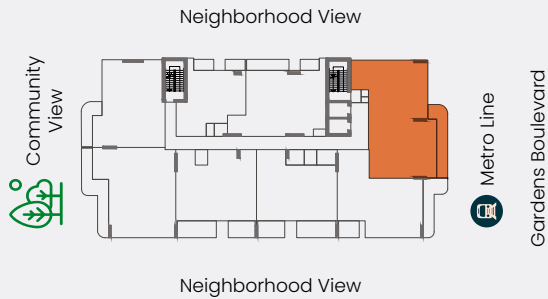
Internal Area 1,563.68 sq.ft.

External Terrace Area 186.22 sq.ft.

**Total 1749.90 sq.ft.**



TYPICAL FLOOR PLATE (2, 3, 6, 7 & 10<sup>TH</sup> FLOOR)



UNIT NUMBERS

201, 301, 601, 701, 1001



DISCLAIMERS

1. All dimensions are in imperial and metric, and measured from finish to finish excluding construction tolerances. 2. All materials, dimensions and drawings are approximate only. 3. Information is subject to change without notice, at developer's absolute discretion. 4. Actual area may vary from the stated area. 5. Drawings are not to scale. 6. All images used are for illustrative purposes only and do not represent the actual size, features, specifications, fittings and furnishing. 7. The developer reserves the right to make revisions or alterations, at its absolute discretion, without any liability whatsoever.

APARTMENT PLANS

**3 BHK - TYPE C**

Internal Area 1,563.69 sq.ft.

External Terrace Area 286.64 sq.ft.

**Total 1,850.33 sq.ft.**



TYPICAL FLOOR PLATE (4, 5, 8 & 9<sup>TH</sup> FLOOR)



UNIT NUMBERS

401, 501, 801, 901



DISCLAIMERS

1. All dimensions are in imperial and metric, and measured from finish to finish excluding construction tolerances. 2. All materials, dimensions and drawings are approximate only. 3. Information is subject to change without notice, at developer's absolute discretion. 4. Actual area may vary from the stated area. 5. Drawings are not to scale. 6. All images used are for illustrative purposes only and do not represent the actual size, features, specifications, fittings and furnishing. 7. The developer reserves the right to make revisions or alterations, at its absolute discretion, without any liability whatsoever.



