

# FAY GARDENS

A DEVELOPMENT BY TARAF X MASDAR CITY

FAY  
— HILLS —

An aerial photograph of a resort pool deck. The pool is kidney-shaped with a light-colored sand beach area. The deck is made of wood and features several lounge chairs and white umbrellas. The surrounding area is landscaped with various plants, including palm trees and purple flowers. A concrete path is visible in the foreground.

From Shaded  
WALKING TRAILS

To Plazas,  
GARDENS

And Gathering,  
SPACES

Fay Hills  
IS BUILT

For Interaction

An aerial architectural rendering of a modern residential development. The scene is dominated by a central landscaped area featuring a winding path, a swimming pool, and a large green lawn. The surrounding buildings are multi-story, modern structures with flat roofs and large windows. The overall atmosphere is one of a well-planned, green urban environment.

*The Vision*  
A CITY IN BALANCE



Abu Dhabi  
International Airport

# FAY — HILLS —

Masdar City

Khalifa City

7 mins

Abu Dhabi  
International Airport

9 mins

Khalifa  
City

16 mins

Yas  
Island

18 mins

Zayed  
University

Abu Dhabi's  
NEW GREEN HEART





Design That Breathes.  
SPACES THAT LIVE.



Introducing  
**FAY GARDENS**



Born of earth,  
AIR, AND WATER

Breathe.  
BELONG. BEGIN.





130

Sustainable Villas

33

Acres Site

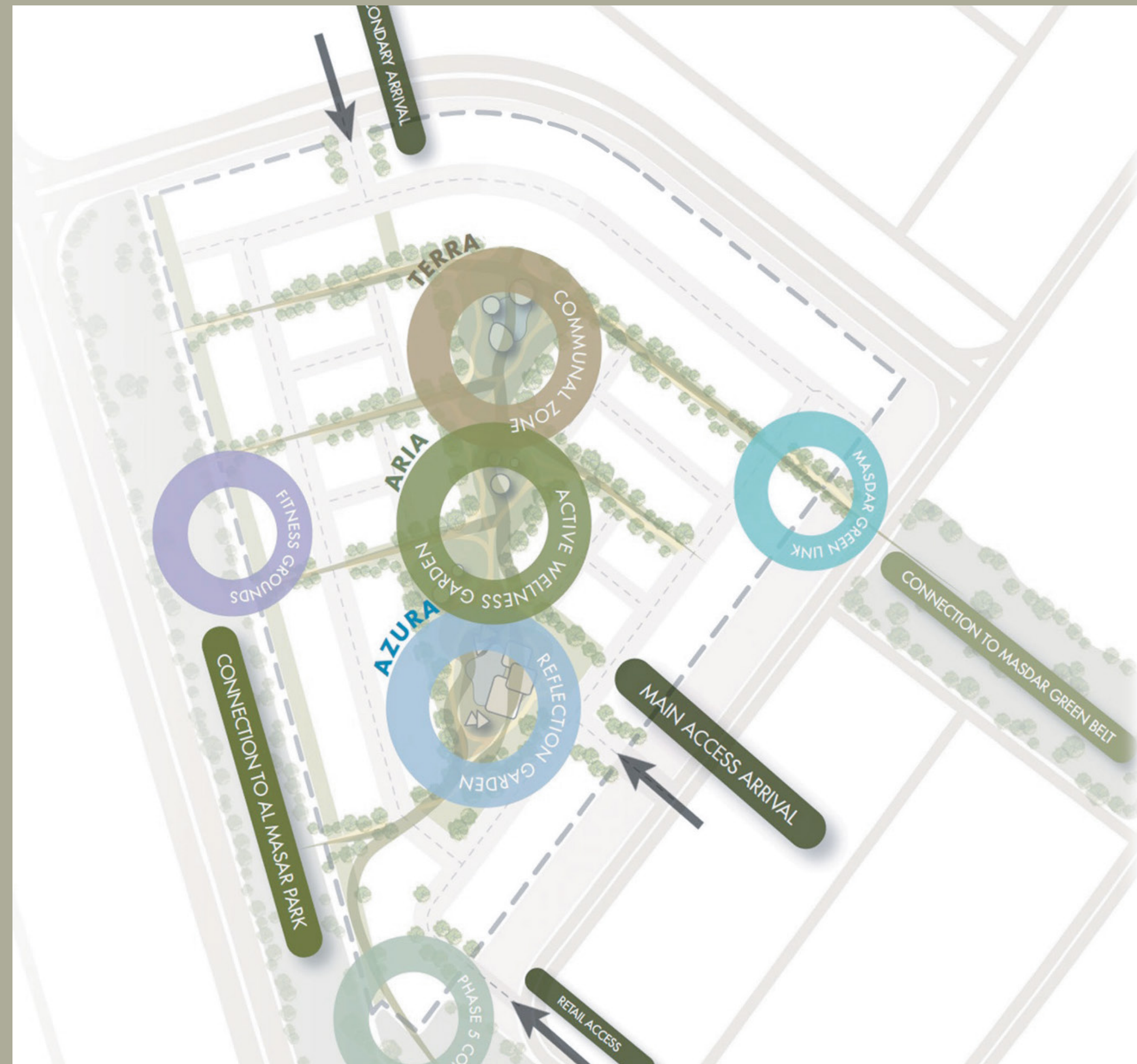
3

Villa Typologies

Terra  
PARK

Aria  
PARK

Azura  
PARK





TERRA PARK  
Grounded in Earth's Layer



ARIA PARK  
Winds of Rejuvenation



A place where Wellness and Lifestyle  
BLEND SEAMLESSLY

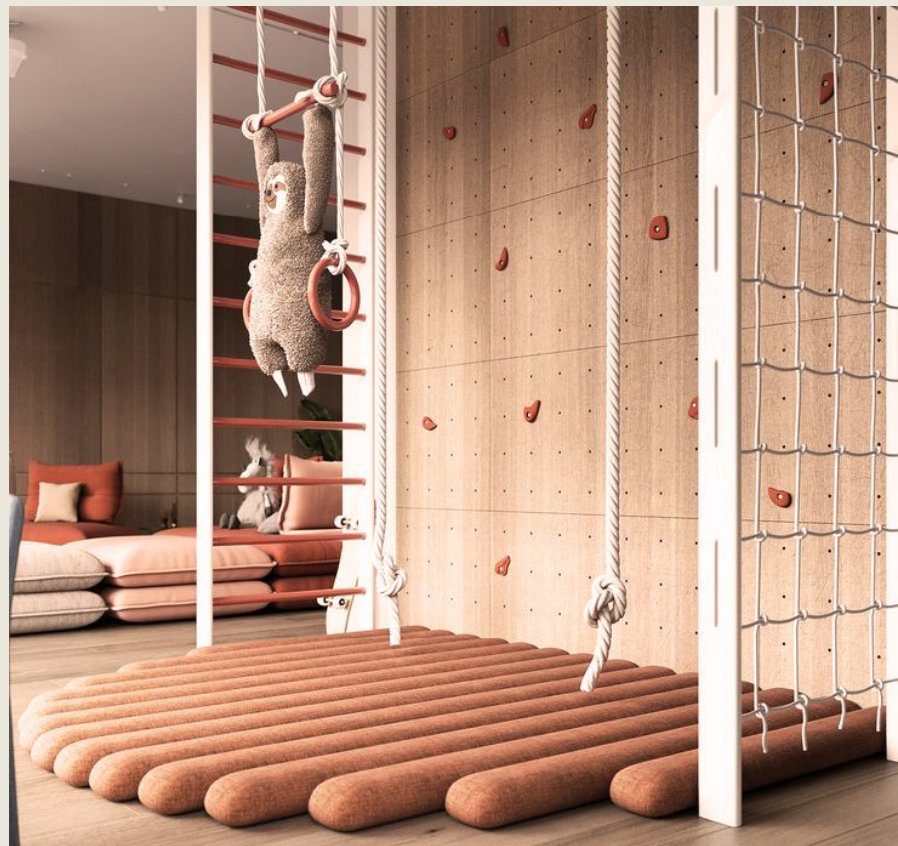


AZURA PARK  
Reflections of Serenity



Community  
CLUBHOUSE







THE VILLAS  
Private Sanctuaries of Life

FAY  
— HILLS —

4 BEDROOM VILLA  
Type 1



4 BEDROOM VILLA  
Type 1

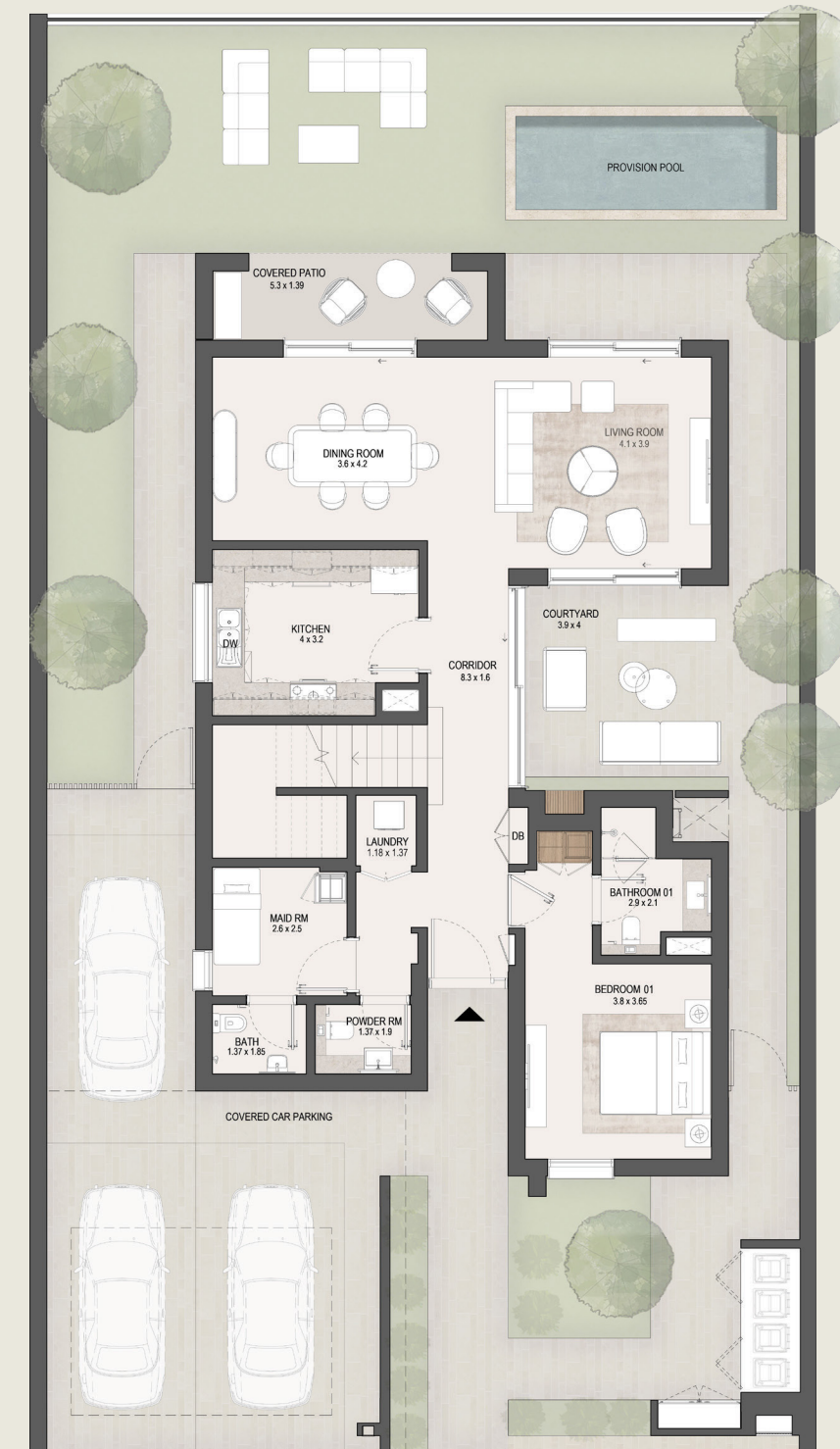


## 4 BEDROOM VILLA - TYPE 1

INTERNAL AREA	295 sq.m	3181 sq.ft
BALCONY	31 sq.m	333 sq.ft
TOTAL AREA	326 sq.m	3514 sq.ft



MASAR  
PARK



GROUND FLOOR



FIRST FLOOR

## 4 BEDROOM VILLA - TYPE 2

INTERNAL AREA	295 sq.m	3181 sq.ft
BALCONY	31 sq.m	333 sq.ft
TOTAL AREA	326 sq.m	3514 sq.ft



GROUND FLOOR



FIRST FLOOR

## 4 BEDROOM VILLA - TYPE 3

INTERNAL AREA	291 sq.m	3136 sq.ft
BALCONY	31 sq.m	333 sq.ft
TOTAL AREA	322 sq.m	3469 sq.ft

MASAR  
PARK



GROUND FLOOR



FIRST FLOOR

5 BEDROOM VILLA  
Type 1



5 BEDROOM VILLA  
Type 1



## 5 BEDROOM VILLA - TYPE 1

INTERNAL AREA	370 sq.m	3977 sq.ft
BALCONY	22 sq.m	238 sq.ft
TOTAL AREA	392 sq.m	4215 sq.ft

MASAR PARK



GROUND FLOOR



FIRST FLOOR

## 5 BEDROOM VILLA - TYPE 2

INTERNAL AREA	370 sq.m	3977 sq.ft
BALCONY	22 sq.m	238 sq.ft
TOTAL AREA	392 sq.m	4215 sq.ft



GROUND FLOOR



FIRST FLOOR

6 BEDROOM VILLA  
TYPE 1



6 BEDROOM VILLA  
TYPE 1



## 6 BEDROOM VILLA - TYPE 1

INTERNAL AREA	451 sq.m	4850 sq.ft
BALCONY	30 sq.m	326 sq.ft
TOTAL AREA	481 sq.m	5176 sq.ft

MASAR PARK



GROUND FLOOR



FIRST FLOOR

# FAY GARDENS

BY TARAF

## 6 BEDROOM VILLA - TYPE 2

INTERNAL AREA	451 sq.m	4850 sq.ft
BALCONY	30 sq.m	326 sq.ft
TOTAL AREA	481 sq.m	5176 sq.ft

MASAR PARK



GROUND FLOOR



FIRST FLOOR



INTERIORS  
Crafted for Stillness

Soft colors, warm textures and natural materials invite comfort and calm.

Wood and natural  
FINISHES





FLOOR-TO-CEILING  
openings to nature



SMART  
family-friendly planning



# KITCHEN



# MASTER BATHROOM



DISCLAIMER: All images, renderings, and plans included in this brochure are for illustrative and representational purposes only and may not accurately reflect the final design or details of the project. The developer reserves the right to make changes, modifications, or substitutions to design elements, materials, layouts, and specifications without prior notice or obligation to inform. Dimensions, finishes, fittings, and furnishings shown are indicative and may vary at the time of completion. This brochure does not constitute an offer, commitment, or warranty of any kind and is intended solely for marketing and informational purposes.

TARAF

X

MASDAR  
CITY 