

هلز  
REEM HILLS

أحد مشاريع  
DEVELOPED BY





هلز  
REEM HILLS

PEAK LIVING IN THE HEART OF THE CAPITAL

WELCOME  
*to*  
PEAK LIVING

The best of all worlds awaits you in the gated community of Reem Hills, where a luxurious life of leisure, serenity, healthy living, and an unmatched diverse community is built in spinning ribbons overlooking splendid surroundings such as a man-made hill, beaches, and a canal.

-  VILLAS, TWIN VILLAS, TOWNHOUSES & APARTMENTS
-  A RANGE OF PLOT SIZES
-  CLOSE PROXIMITY TO KEY DESTINATIONS IN ABU DHABI
-  SPACIOUS AND CONTINUOUS PARKS



# AT THE CENTRE OF EVERYTHING

Just minutes away from key destinations,  
Reem Hills is a haven at the center of city life.



UNMATCHED  
LIVING  
EXPERIENCE



## CREATED FOR AN ELEVATED LIFESTYLE

At Reem Hills, the beautifully landscaped development boasts a gradation of levels, reaching the main and higher-most hill where breathtaking 360-degree views offer residents unimpeded sights of natural beauty from greenery to sea.



## WITH INSPIRINGLY BEAUTIFUL MAN-MADE HILL

At Reem Hills, lush and panoramic landscapes ascend to ever-higher grounds, allowing you to rise above and expand your vision in naturally rich, functional, practical, regionally-adapted, and climate-specific areas. These are ideal for a life characterized by tranquility, resilience, and harmony.



# THE HEIGHTS OF NATURAL SERENITY



# A COMMUNITY THRIVING IN NATURE'S EMBRACE

Every corner of Reem Hills is created to exude and embrace you with peace. From your home to the moment you step outside, the options at hand to keep you serene, healthy, and in a constant state of well-being are numerous and plentiful. Allow yourself to thrive in a community that redefines the concepts of engagement, interaction, and fun.



VILLAS BUILT FOR  
THE HEART, MIND,  
AND SOUL



## DESIGN YOUR LIFE WITH YOUR CHOICES

At Reem Hills, residents can choose from 5- to 7-bedroom villas available in 2 design styles. These villas offer beautifully crafted architectural lines that inspire harmonious living in luxurious, intimate, yet spacious settings, with breathtaking views on all sides.



# ZEN DESIGN

Enjoy a life of simplicity and equilibrium in homes that bring together oriental influences and a contemporary style for a life of tranquility with your loved ones.



## MINIMAL DESIGN

Discover the serenity of homes with minimalist and architecturally designed contemporary spaces. These homes offer understated luxury, panoramic views, and ultimate privacy.



## SPACIOUS LIVING

With spacious villas catering to varying tastes and with wide-open areas outdoors, Reem Hills delivers the maximum in spatial experience. Relax, luxuriate, and be well in homes and a community that embraces expansiveness on all levels, enabling you to enjoy the zenith of well-being and all the fruits of peak living at their most premium.







# AMENITIES AT YOUR DOORSTEP

The amenities at Reem Hills cover the spectrum of all your needs, ensuring you can experience tranquility and a well-lived life. Equipped with the highest security technology, they offer you peace of mind.



ACCESS TO  
PROMENADE



PRIVATE POOLS



RETAIL SHOPS



CLUB HOUSES



JOGGING &  
CYCLING TRACKS



PARKS &  
PLAYGROUNDS



GATED  
COMMUNITY



CAFES &  
RESTAURANTS



TRANQUILITY FROM  
HILL TO SHORE SANDS





# ALL YOUR NEEDS WITHIN REACH

Take your lifestyle to the next level and go above and beyond in all aspects of life. From its luxury to its tranquility and exceptional assets that set it apart in every way. This is where you'll discover peak living and the place that you can call home.

A

### AMENITIES

- PRIVATE SCHOOL
- COMMUNITY CENTRE
- EARLY LEARNING CENTRE
- MOSQUES
- RETAIL
- RESTAURANTS & CAFES
- MEDICAL SERVICES
- CLUB HOUSES

P

### PARKS

- NEIGHBORHOOD PARK
- LINEAR PARK
- POCKET PARK
- LANDSCAPED HILL
- COMMUNITY PARK
- JOGGING & CYCLING TRACKS
- SPORTS COURTS
- SHADED SEATING AREA

R

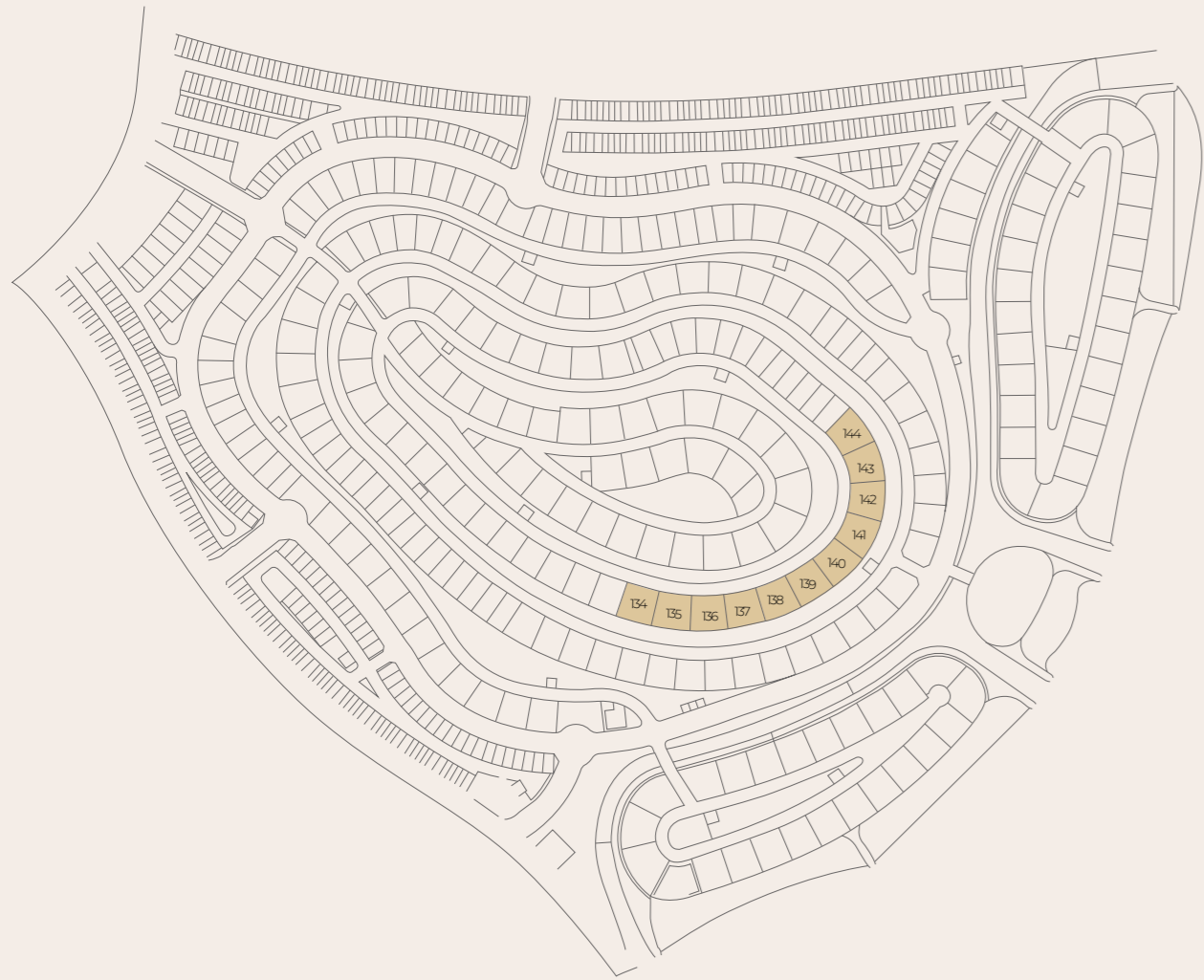
### RECREATIONAL AREA

- SANDY BEACHES



# 7 BEDROOM VILLA - ZEN

Experience unmatched luxurious living spread over four floors with the best of all worlds all around you.



KEY PLAN



7 BR-ZEN  
GROUND FLOOR

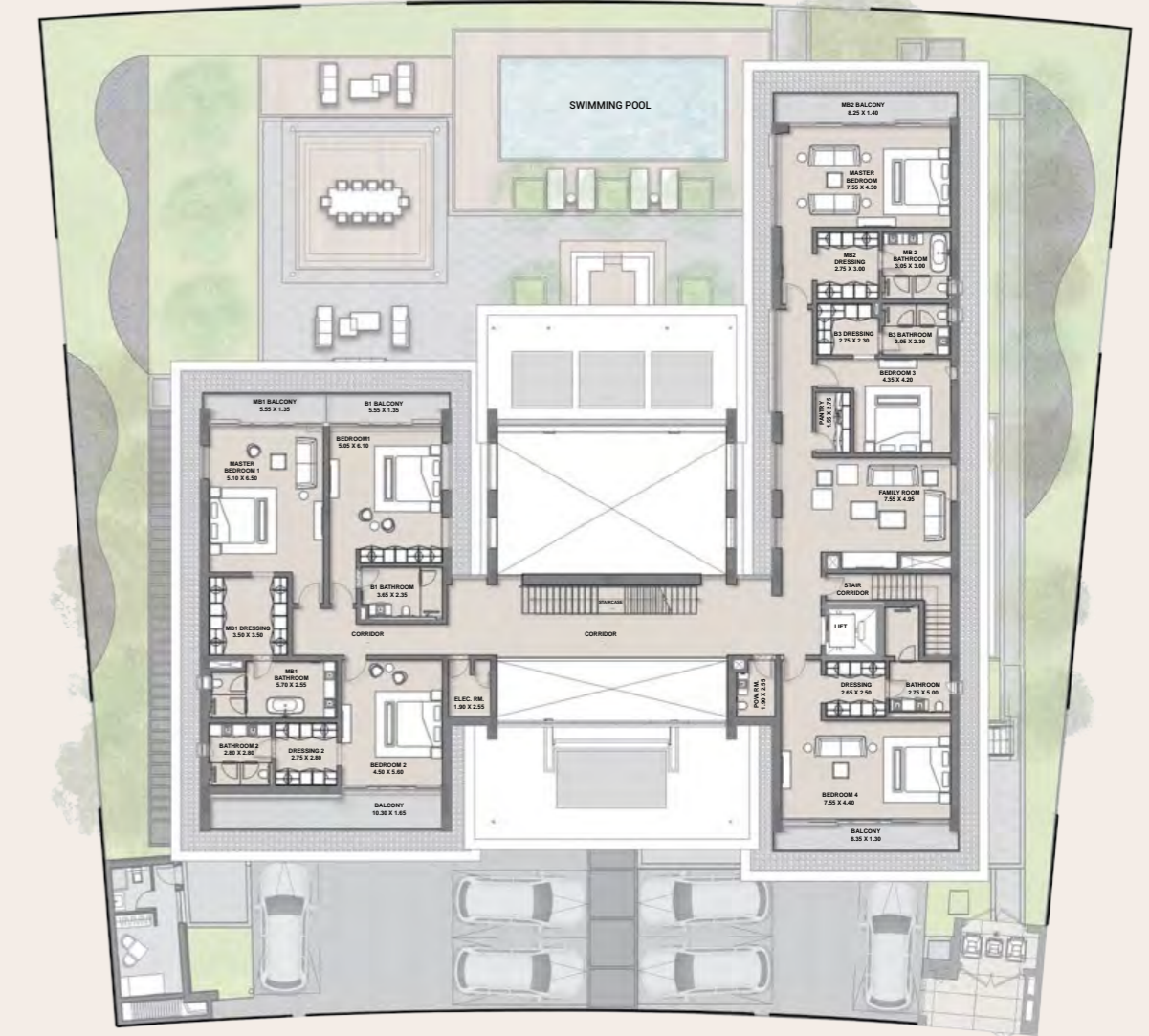


NO. OF BEDROOMS	07
FLOOR CONFIGURATION	B+G+1+Roof
TOTAL SELLABLE AREA	19,153 sq.ft
PLOT SIZE	21,687 sq.ft*

\* Starting from

All materials, dimensions, and drawings are approximate only, including actual areas. / Information is subject to change at developer's discretion, without notice, and developer reserves the right to make revisions without liability. / All images used are for illustrative purposes only and do not represent the actual size, features, specifications, fittings, and furnishings.

7 BR-ZEN  
FIRST FLOOR



NO. OF BEDROOMS	07
FLOOR CONFIGURATION	B+G+1+Roof
TOTAL SELLABLE AREA	19,153 sq.ft
PLOT SIZE	21,687 sq.ft*

\* Starting from

All materials, dimensions, and drawings are approximate only, including actual areas. / Information is subject to change at developer's discretion, without notice, and developer reserves the right to make revisions without liability. / All images used are for illustrative purposes only and do not represent the actual size, features, specifications, fittings, and furnishings.

7 BR-ZEN  
BASEMENT



NO. OF BEDROOMS	07
FLOOR CONFIGURATION	B+G+1+Roof
TOTAL SELLABLE AREA	19,153 sq.ft
PLOT SIZE	21,687 sq.ft*

\* Starting from

All materials, dimensions, and drawings are approximate only, including actual areas. / Information is subject to change at developer's discretion, without notice, and developer reserves the right to make revisions without liability. / All images used are for illustrative purposes only and do not represent the actual size, features, specifications, fittings, and furnishings.

7 BR-ZEN  
ROOF FLOOR



NO. OF BEDROOMS	07
FLOOR CONFIGURATION	B+G+1+Roof
TOTAL SELLABLE AREA	19,153 sq.ft
PLOT SIZE	21,687 sq.ft*

\* Starting from

All materials, dimensions, and drawings are approximate only, including actual areas. / Information is subject to change at developer's discretion, without notice, and developer reserves the right to make revisions without liability. / All images used are for illustrative purposes only and do not represent the actual size, features, specifications, fittings, and furnishings.

# 7 BEDROOM VILLA - MINIMAL

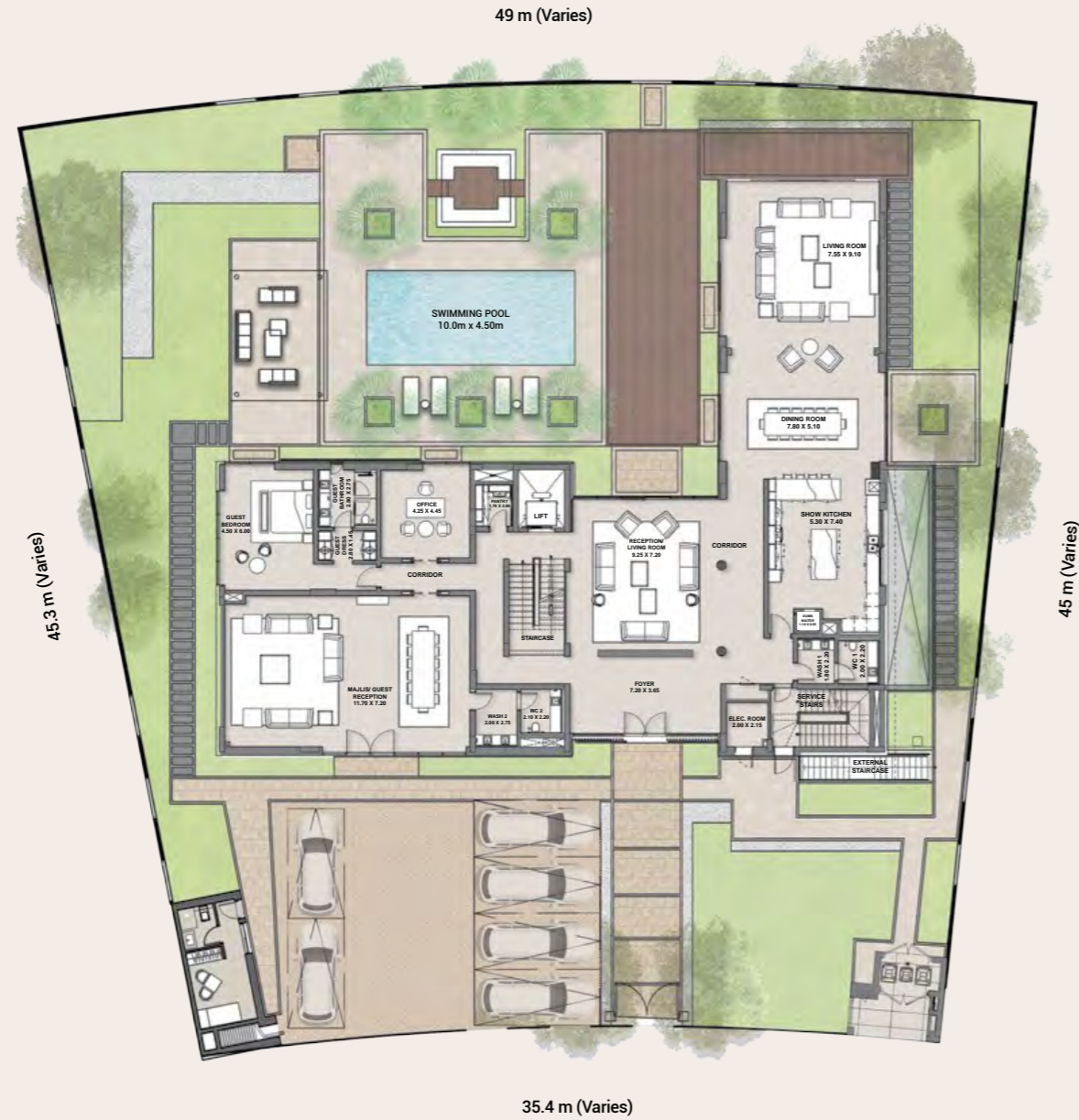
Live the peak of sophisticated luxury in villas spread over four floors overlooking natural splendor in every direction.



KEY PLAN



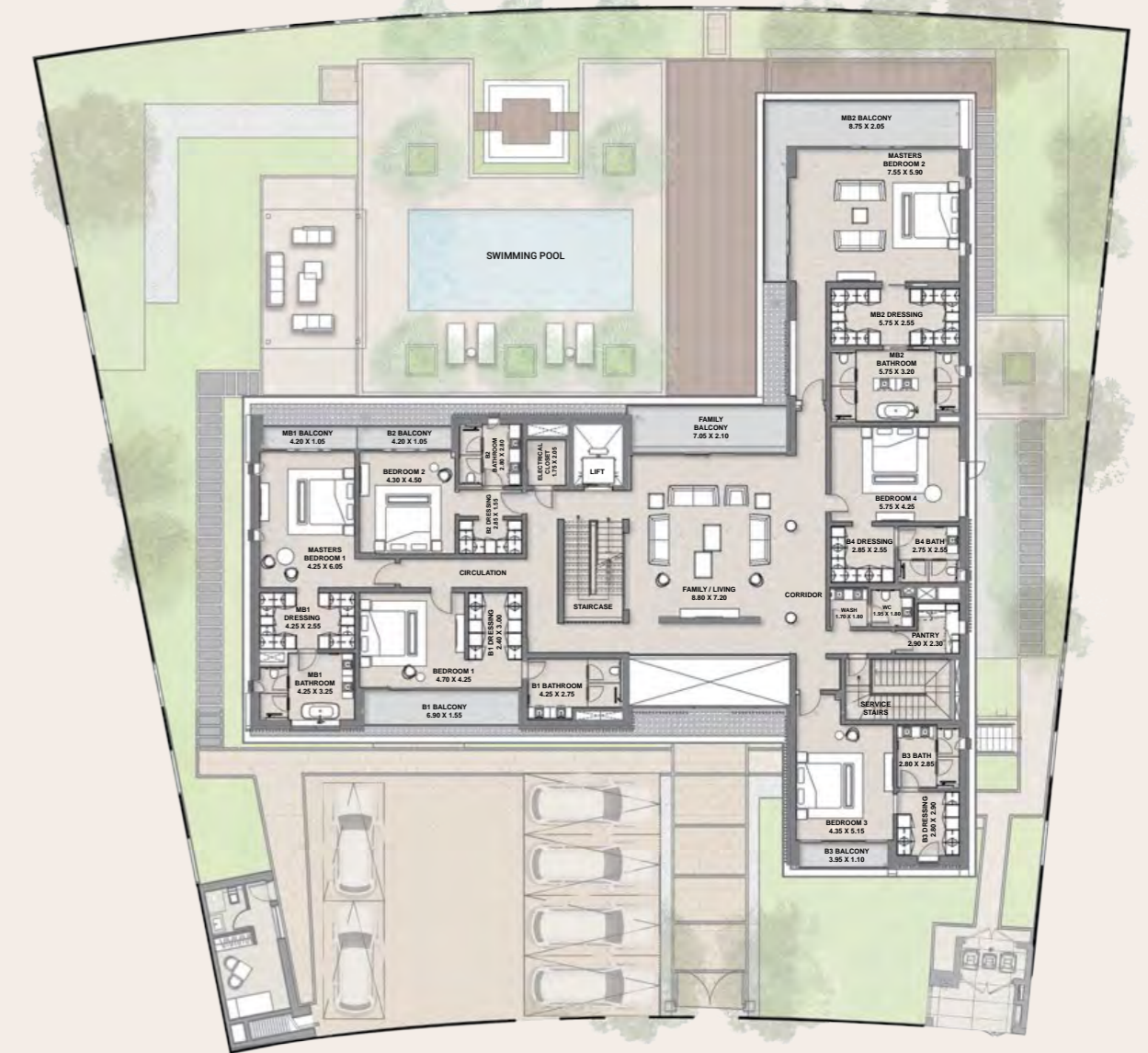
7 BR-MINIMAL  
GROUND FLOOR



NO. OF BEDROOMS	07
FLOOR CONFIGURATION	B+G+1+Roof
TOTAL SELLABLE AREA	17,435 sq.ft
PLOT SIZE	18,447 sq.ft*

\* Starting from

7 BR-MINIMAL  
FIRST FLOOR

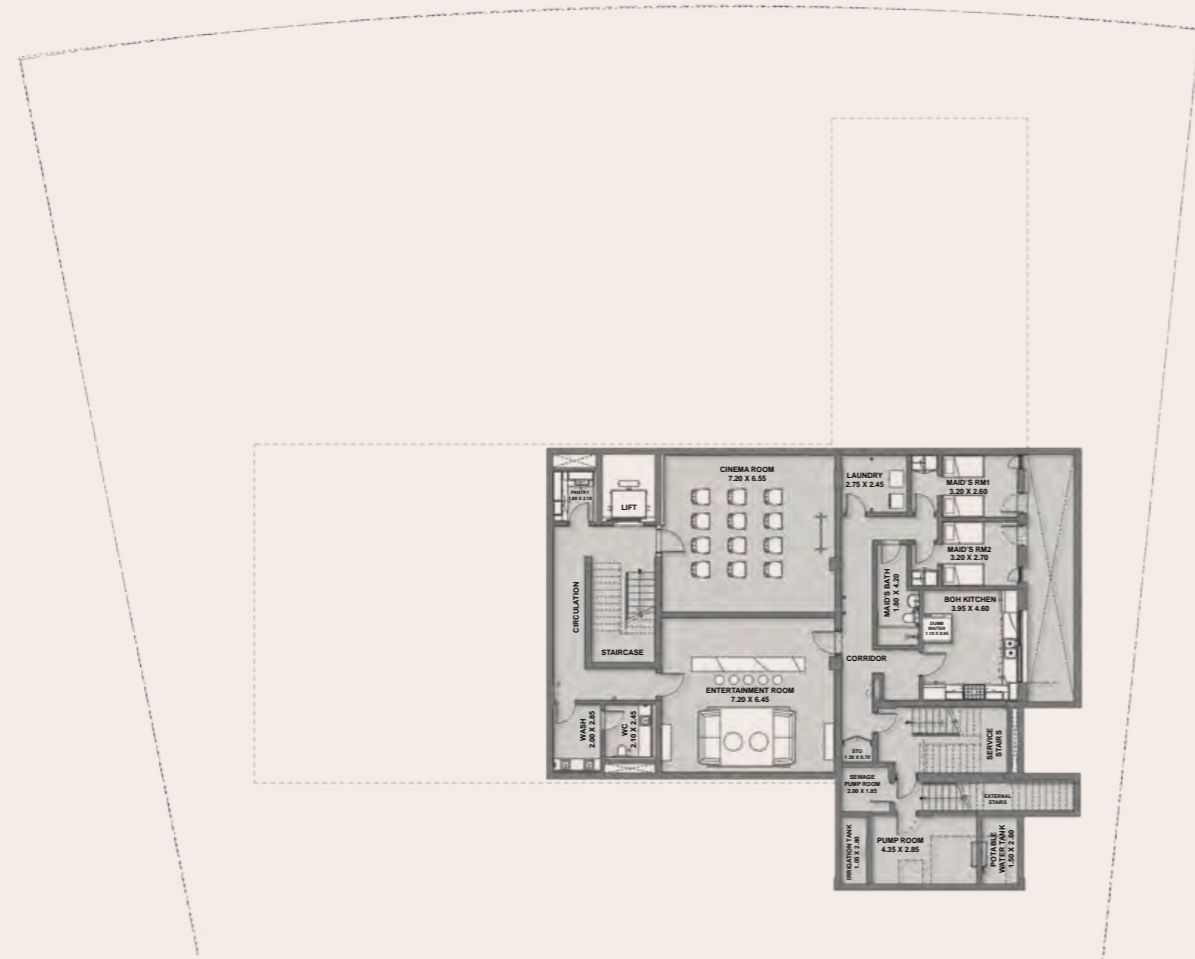


NO. OF BEDROOMS	07
FLOOR CONFIGURATION	B+G+1+Roof
TOTAL SELLABLE AREA	17,435 sq.ft
PLOT SIZE	18,447 sq.ft*

\* Starting from

All materials, dimensions, and drawings are approximate only, including actual areas. / Information is subject to change at developer's discretion, without notice, and developer reserves the right to make revisions without liability. / All images used are for illustrative purposes only and do not represent the actual size, features, specifications, fittings, and furnishings.

7 BR-MINIMAL  
BASEMENT



NO. OF BEDROOMS	07
FLOOR CONFIGURATION	B+G+1+Roof
TOTAL SELLABLE AREA	17,435 sq.ft
PLOT SIZE	18,447 sq.ft*

\* Starting from

All materials, dimensions, and drawings are approximate only, including actual areas. / Information is subject to change at developer's discretion, without notice, and developer reserves the right to make revisions without liability. / All images used are for illustrative purposes only and do not represent the actual size, features, specifications, fittings, and furnishings.

7 BR-MINIMAL  
ROOF FLOOR



NO. OF BEDROOMS	07
FLOOR CONFIGURATION	B+G+1+Roof
TOTAL SELLABLE AREA	17,435 sq.ft
PLOT SIZE	18,447 sq.ft*

\* Starting from

All materials, dimensions, and drawings are approximate only, including actual areas. / Information is subject to change at developer's discretion, without notice, and developer reserves the right to make revisions without liability. / All images used are for illustrative purposes only and do not represent the actual size, features, specifications, fittings, and furnishings.

## 6 BEDROOM VILLA - ZEN

Luxuriate and enhance your wellness in spacious homes spread across three floors with spellbinding views in every direction.



6 BR-ZEN  
GROUND FLOOR

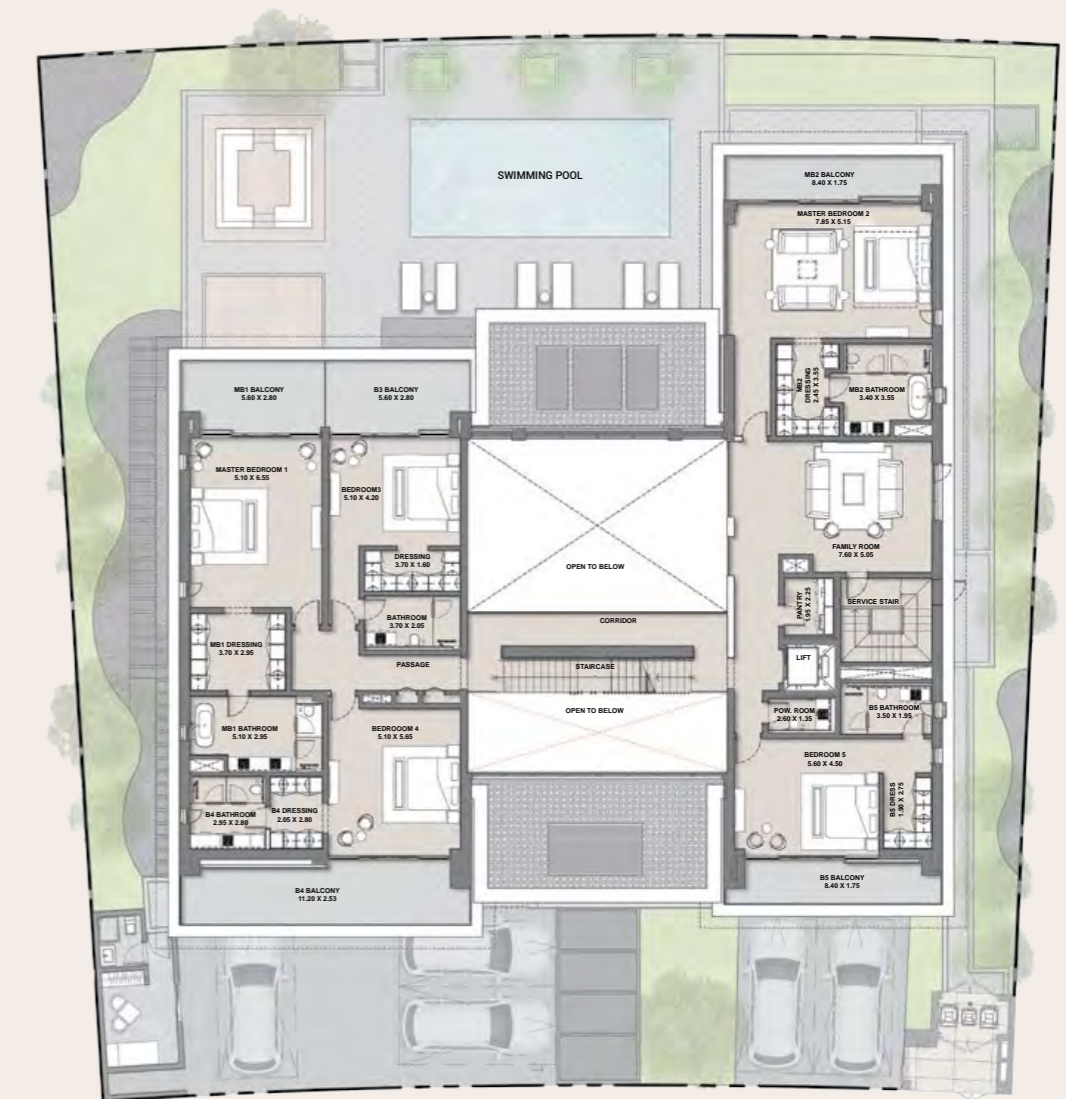


NO. OF BEDROOMS	06
FLOOR CONFIGURATION	G+1+Roof
TOTAL SELLABLE AREA	14,382 sq.ft
PLOT SIZE	15,238 sq.ft*

\* Starting from

All materials, dimensions, and drawings are approximate only, including actual areas. / Information is subject to change at developer's discretion, without notice, and developer reserves the right to make revisions without liability. / All images used are for illustrative purposes only and do not represent the actual size, features, specifications, fittings, and furnishings.

6 BR-ZEN  
FIRST FLOOR



NO. OF BEDROOMS	06
FLOOR CONFIGURATION	G+1+Roof
TOTAL SELLABLE AREA	14,382 sq.ft
PLOT SIZE	15,238 sq.ft*

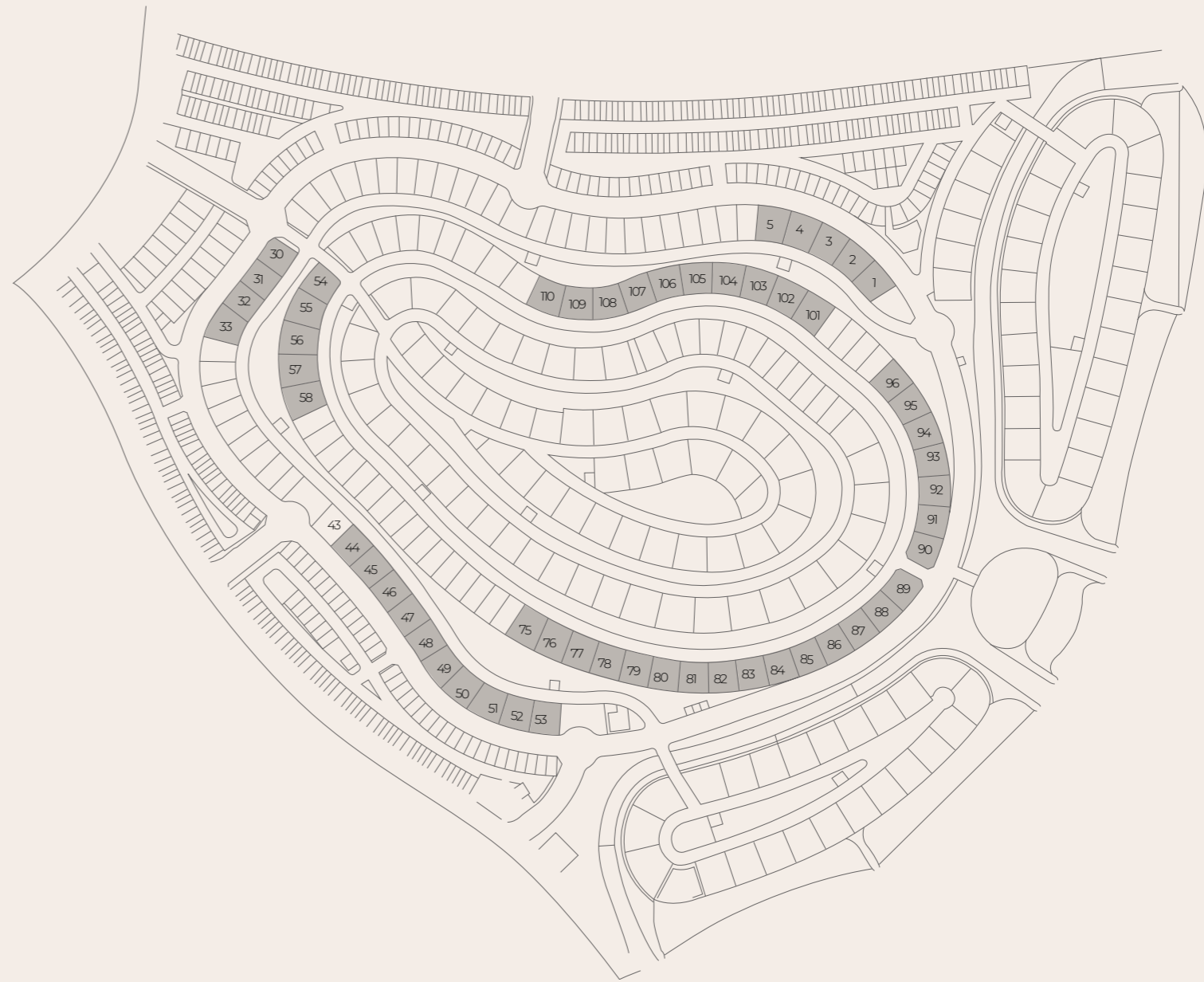
\* Starting from

All materials, dimensions, and drawings are approximate only, including actual areas. / Information is subject to change at developer's discretion, without notice, and developer reserves the right to make revisions without liability. / All images used are for illustrative purposes only and do not represent the actual size, features, specifications, fittings, and furnishings.

6 BR-ZEN  
ROOF FLOOR



KEY PLAN



NO. OF BEDROOMS	06
FLOOR CONFIGURATION	G+1+Roof
TOTAL SELLABLE AREA	14,382 sq.ft
PLOT SIZE	15,238 sq.ft*

\* Starting from

All materials, dimensions, and drawings are approximate only, including actual areas. / Information is subject to change at developer's discretion, without notice, and developer reserves the right to make revisions without liability. / All images used are for illustrative purposes only and do not represent the actual size, features, specifications, fittings, and furnishings.

## 6 BEDROOM VILLA - MINIMAL

Enjoy the zenith of well-being in expansive villas spread over three floors with lush panoramic landscapes all around.



6 BR-MINIMAL  
GROUND FLOOR

NO. OF BEDROOMS	06
FLOOR CONFIGURATION	G+1+Roof
TOTAL SELLABLE AREA	13,108 sq.ft
PLOT SIZE	15,109 sq.ft*

\* Starting from

All materials, dimensions, and drawings are approximate only, including actual areas. / Information is subject to change at developer's discretion, without notice, and developer reserves the right to make revisions without liability. / All images used are for illustrative purposes only and do not represent the actual size, features, specifications, fittings, and furnishings.



6 BR-MINIMAL  
FIRST FLOOR

NO. OF BEDROOMS	06
FLOOR CONFIGURATION	G+1+Roof
TOTAL SELLABLE AREA	13,108 sqft
PLOT SIZE	15,109 sq.ft*

\* Starting from

All materials, dimensions, and drawings are approximate only, including actual areas. / Information is subject to change at developer's discretion, without notice, and developer reserves the right to make revisions without liability. / All images used are for illustrative purposes only and do not represent the actual size, features, specifications, fittings, and furnishings.



6 BR-MINIMAL  
ROOF FLOOR



KEY PLAN



NO. OF BEDROOMS	06
FLOOR CONFIGURATION	G+1+Roof
TOTAL SELLABLE AREA	13,108 sq.ft
PLOT SIZE	15,109 sq.ft*

\* Starting from

All materials, dimensions, and drawings are approximate only, including actual areas. / Information is subject to change at developer's discretion, without notice, and developer reserves the right to make revisions without liability. / All images used are for illustrative purposes only and do not represent the actual size, features, specifications, fittings, and furnishings.

## 5 BEDROOM VILLA - ZEN

Embrace leisurely and serene living with villas spread across three floors at the heart of nature's best.



5 BR-ZEN  
GROUND FLOOR



NO. OF BEDROOMS	05
FLOOR CONFIGURATION	G+1+Roof
TOTAL SELLABLE AREA	11,119 sq.ft
PLOT SIZE	11,057 sq.ft*

\* Starting from

All materials, dimensions, and drawings are approximate only, including actual areas. / Information is subject to change at developer's discretion, without notice, and developer reserves the right to make revisions without liability. / All images used are for illustrative purposes only and do not represent the actual size, features, specifications, fittings, and furnishings.

5 BR-ZEN  
FIRST FLOOR



NO. OF BEDROOMS	05
FLOOR CONFIGURATION	G+1+Roof
TOTAL SELLABLE AREA	11,119 sq.ft
PLOT SIZE	11,057 sq.ft*

\* Starting from

All materials, dimensions, and drawings are approximate only, including actual areas. / Information is subject to change at developer's discretion, without notice, and developer reserves the right to make revisions without liability. / All images used are for illustrative purposes only and do not represent the actual size, features, specifications, fittings, and furnishings.

5 BR-ZEN  
ROOF FLOOR



KEY PLAN



NO. OF BEDROOMS	05
FLOOR CONFIGURATION	G+1+Roof
TOTAL SELLABLE AREA	11,119 sq.ft
PLOT SIZE	11,057 sq.ft*

\* Starting from

All materials, dimensions, and drawings are approximate only, including actual areas. / Information is subject to change at developer's discretion, without notice, and developer reserves the right to make revisions without liability. / All images used are for illustrative purposes only and do not represent the actual size, features, specifications, fittings, and furnishings.

## 5 BEDROOM VILLA - MINIMAL

Rise above and expand your mind in luxury living spread across three floors as you nurture your connection to nature.



5 BR-MINIMAL  
GROUND FLOOR



NO. OF BEDROOMS	05
FLOOR CONFIGURATION	G+1+Roof
TOTAL SELLABLE AREA	10,487 sq.ft
PLOT SIZE	10,449 sq.ft*

\* Starting from

All materials, dimensions, and drawings are approximate only, including actual areas. / Information is subject to change at developer's discretion, without notice, and developer reserves the right to make revisions without liability. / All images used are for illustrative purposes only and do not represent the actual size, features, specifications, fittings, and furnishings.

5 BR-MINIMAL  
FIRST FLOOR



NO. OF BEDROOMS	05
FLOOR CONFIGURATION	G+1+Roof
TOTAL SELLABLE AREA	10,487 sq.ft
PLOT SIZE	10,449 sq.ft*

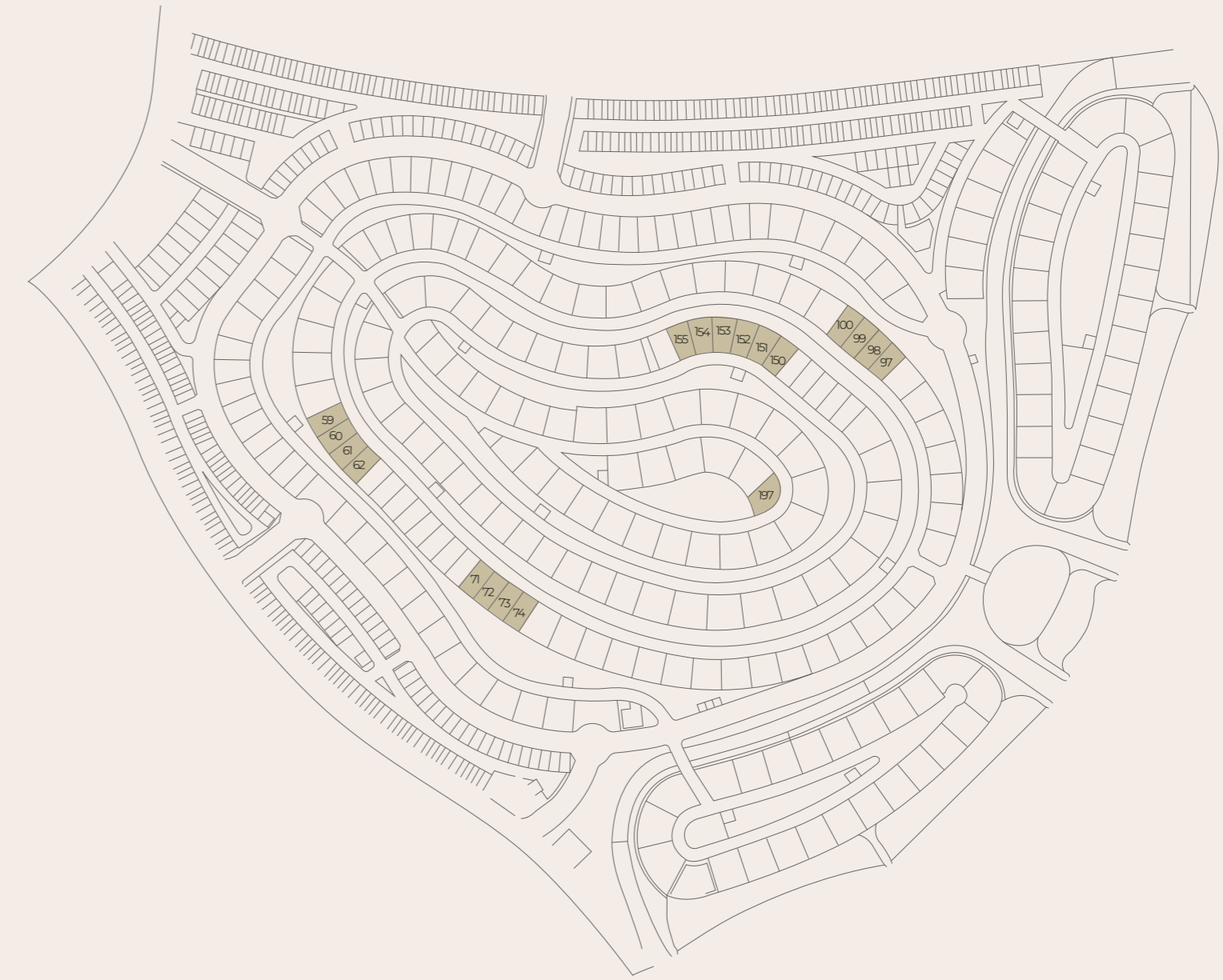
\* Starting from

All materials, dimensions, and drawings are approximate only, including actual areas. / Information is subject to change at developer's discretion, without notice, and developer reserves the right to make revisions without liability. / All images used are for illustrative purposes only and do not represent the actual size, features, specifications, fittings, and furnishings.

5 BR-MINIMAL  
ROOF FLOOR



KEY PLAN



NO. OF BEDROOMS	05
FLOOR CONFIGURATION	G+1+Roof
TOTAL SELLABLE AREA	10,487 sq.ft
PLOT SIZE	10,449 sq.ft*

\* Starting from

All materials, dimensions, and drawings are approximate only, including actual areas. / Information is subject to change at developer's discretion, without notice, and developer reserves the right to make revisions without liability. / All images used are for illustrative purposes only and do not represent the actual size, features, specifications, fittings, and furnishings.



## REEM HILLS

FOR THOSE WHO SEEK  
THE ULTIMATE THAT  
LIFE HAS TO OFFER





---

I've broken down the longer sentences for clarity and made slight adjustments to ensure a smooth flow of ideas.

Reem Hills is a development by Q Properties, a part of Q Holding. Located in a gated community on Abu Dhabi's Reem Island, it offers residents a unique opportunity to indulge their senses in a luxurious environment, providing an escape from the pressures of today's fast-paced life. Q Properties is committed to sustainable living solutions that contribute to the growth of Abu Dhabi.

Catering to a diverse population from various cultures, we design luxury homes that evoke an affluent quality of life. We aim to build a strong foundation for citizens and residents to be part of ground-breaking lifestyles. Our environmentally conscious construction and maintenance practices are seamlessly integrated into life, enhancing and improving it.

---

