



## TOPAZ RESIDENCES

|                      |                                                                                                                                              |
|----------------------|----------------------------------------------------------------------------------------------------------------------------------------------|
| <b>BUILDING</b>      | <b>TOPAZ - 1BR</b>                                                                                                                           |
| <b>1 BEDROOM</b>     | <b>TYPE A</b>                                                                                                                                |
| <b>UNIT NO.</b>      | 106, 107, 108, 109, 110, 206, 207, 208, 209, 210, 806, 807, 808, 809, 810, 906, 907, 908, 909, 910, 1006, 1007, 1008, 1009, 1010, 1108, 1109 |
| <b>SUITE AREA.</b>   | <b>61m<sup>2</sup> (678 sq.ft)</b>                                                                                                           |
| <b>BALCONY AREA.</b> | <b>6 m<sup>2</sup> (64sq.ft)</b>                                                                                                             |
| <b>TOTAL AREA</b>    | <b>69 m<sup>2</sup> (742 sq.ft)</b>                                                                                                          |



Level 01 - 10



Level 11



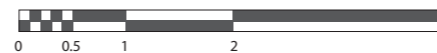
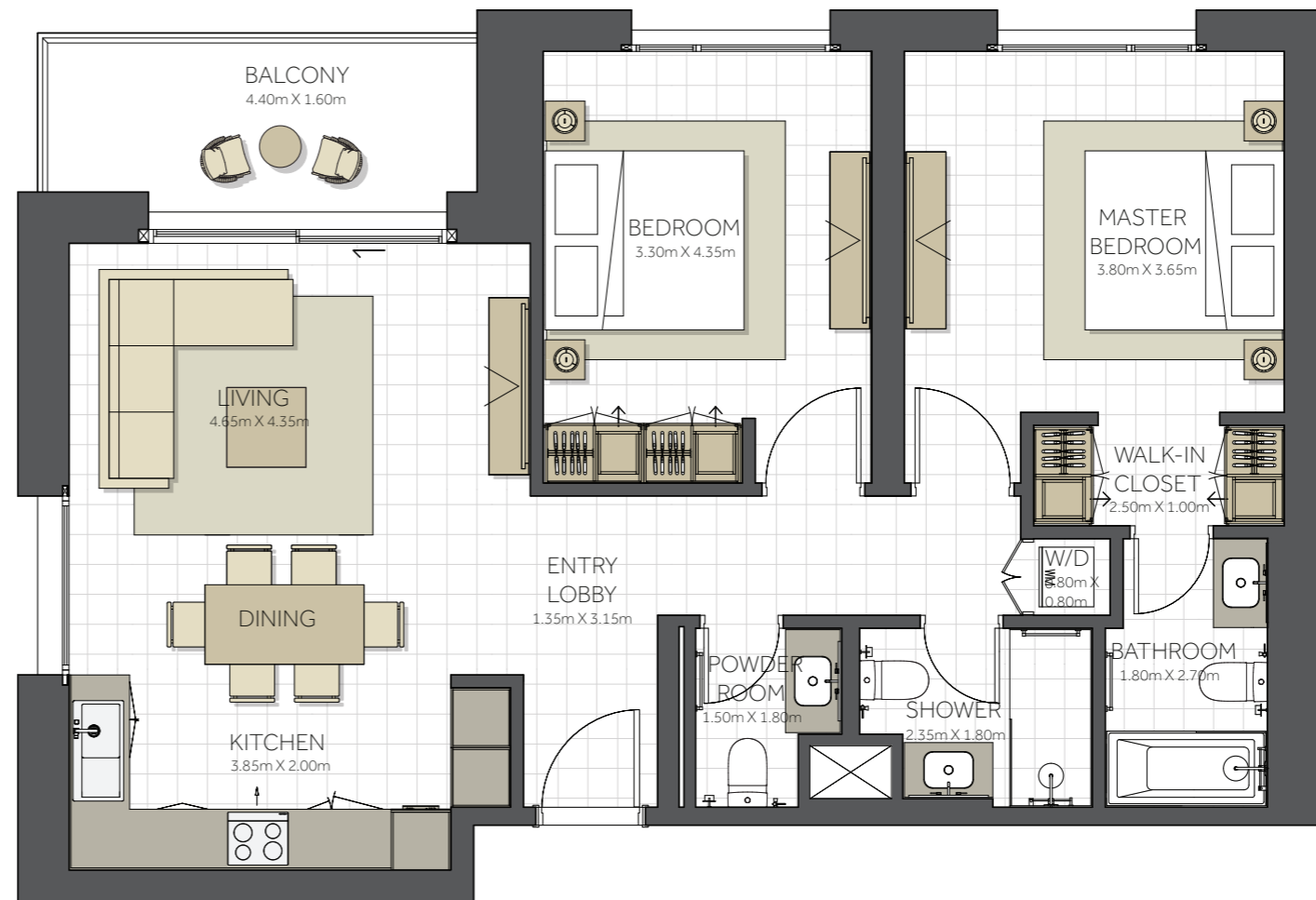
**Disclaimer:**

1. All room dimensions are measured to structural elements and exclude all finishes and construction tolerances. 2. All dimensions have been provided by our consultant architects. 3. All materials, dimensions and drawings are approximate. Information is subject to change without notice. 4. Actual suite area may vary from the stated area. Drawings not to scale. The developer reserves the right to make revisions. 5. Calculation of suite area is measured as the area bounded by the centre line of the demising or partition walls separating one unit from another unit, the exterior face of all exterior walls, and the exterior face of the corridor wall enclosing the adjoining unit. 6. Calculation of balcony area is measured as the area bounded by the centre line of the demising or partition walls separating one unit from another unit, the outmost face of the enclosing guard and the external face of the unit adjoining the balcony. 7. The units are measured at typical floor in the building. Columns may vary in size depending on the floor level.

# توباز

## TOPAZ RESIDENCES

|               |                                              |
|---------------|----------------------------------------------|
| BUILDING      | TOPAZ - 2BR                                  |
| 2 BEDROOM     | TYPE A                                       |
| UNIT NO.      | 211, 311, 411, 511, 611, 711, 811, 911, 1011 |
| SUITE AREA.   | 97m <sup>2</sup> (1.044 sq.ft)               |
| BALCONY AREA. | 8 m <sup>2</sup> (86 sq.ft)                  |
| TOTAL AREA    | 105 m <sup>2</sup> (1.130 sq.ft)             |



### Level 02 - 10



#### Disclaimer:

1. All room dimensions are measured to structural elements and exclude all finishes and construction tolerances. 2. All dimensions have been provided by our consultant architects. 3. All materials, dimensions and drawings are approximate. Information is subject to change without notice. 4. Actual suite area may vary from the stated area. Drawings not to scale. The developer reserves the right to make revisions. 5. Calculation of suite area is measured as the area bounded by the centre line of the demising or partition walls separating one unit from another unit, the exterior face of all exterior walls, and the exterior face of the corridor wall enclosing the adjoining unit. 6. Calculation of balcony area is measured as the area bounded by the centre line of the demising or partition walls separating one unit from another unit, the outmost face of the enclosing guard and the external face of the unit adjoining the balcony. 7. The units are measured at typical floor in the building. Columns may vary in size depending on the floor level.

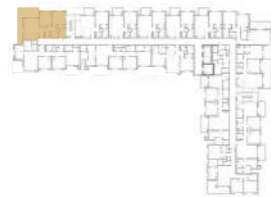
# توباز

## TOPAZ RESIDENCES

|               |                                  |
|---------------|----------------------------------|
| BUILDING      | TOPAZ - 2BR                      |
| 2 BEDROOM     | TYPE A1                          |
| UNIT NO.      | 111                              |
| SUITE AREA.   | 97m <sup>2</sup> (1.044 sq.ft)   |
| TERRACE AREA. | 28 m <sup>2</sup> (301 sq.ft)    |
| TOTAL AREA    | 125 m <sup>2</sup> (1.345 sq.ft) |



### Level 01



#### Disclaimer:

1. All room dimensions are measured to structural elements and exclude all finishes and construction tolerances. 2. All dimensions have been provided by our consultant architects. 3. All materials, dimensions and drawings are approximate. Information is subject to change without notice. 4. Actual suite area may vary from the stated area. Drawings not to scale. The developer reserves the right to make revisions. 5. Calculation of suite area is measured as the area bounded by the centre line of the demising or partition walls separating one unit from another unit, the exterior face of all exterior walls, and the exterior face of the corridor wall enclosing the adjoining unit. 6. Calculation of balcony area is measured as the area bounded by the centre line of the demising or partition walls separating one unit from another unit, the outmost face of the enclosing guard and the external face of the unit adjoining the balcony. 7. The units are measured at typical floor in the building. Columns may vary in size depending on the floor level.



# TOPAZ RESIDENCES

|                      |                                                       |
|----------------------|-------------------------------------------------------|
| <b>BUILDING</b>      | <b>TOPAZ - 2BR</b>                                    |
| <b>2 BEDROOM</b>     | <b>TYPE B</b>                                         |
| <b>UNIT NO.</b>      | <b>105, 205, 805, 905,<br/>1005, 1105, 1204, 1304</b> |
| <b>SUITE AREA.</b>   | <b>100m<sup>2</sup> (1.076 sq.ft)</b>                 |
| <b>BALCONY AREA.</b> | <b>12 m<sup>2</sup> (140 sq.ft)</b>                   |
| <b>TOTAL AREA</b>    | <b>112m<sup>2</sup> (1.184 sq.ft)</b>                 |

Level 01 - 10



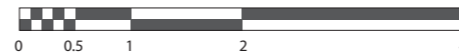
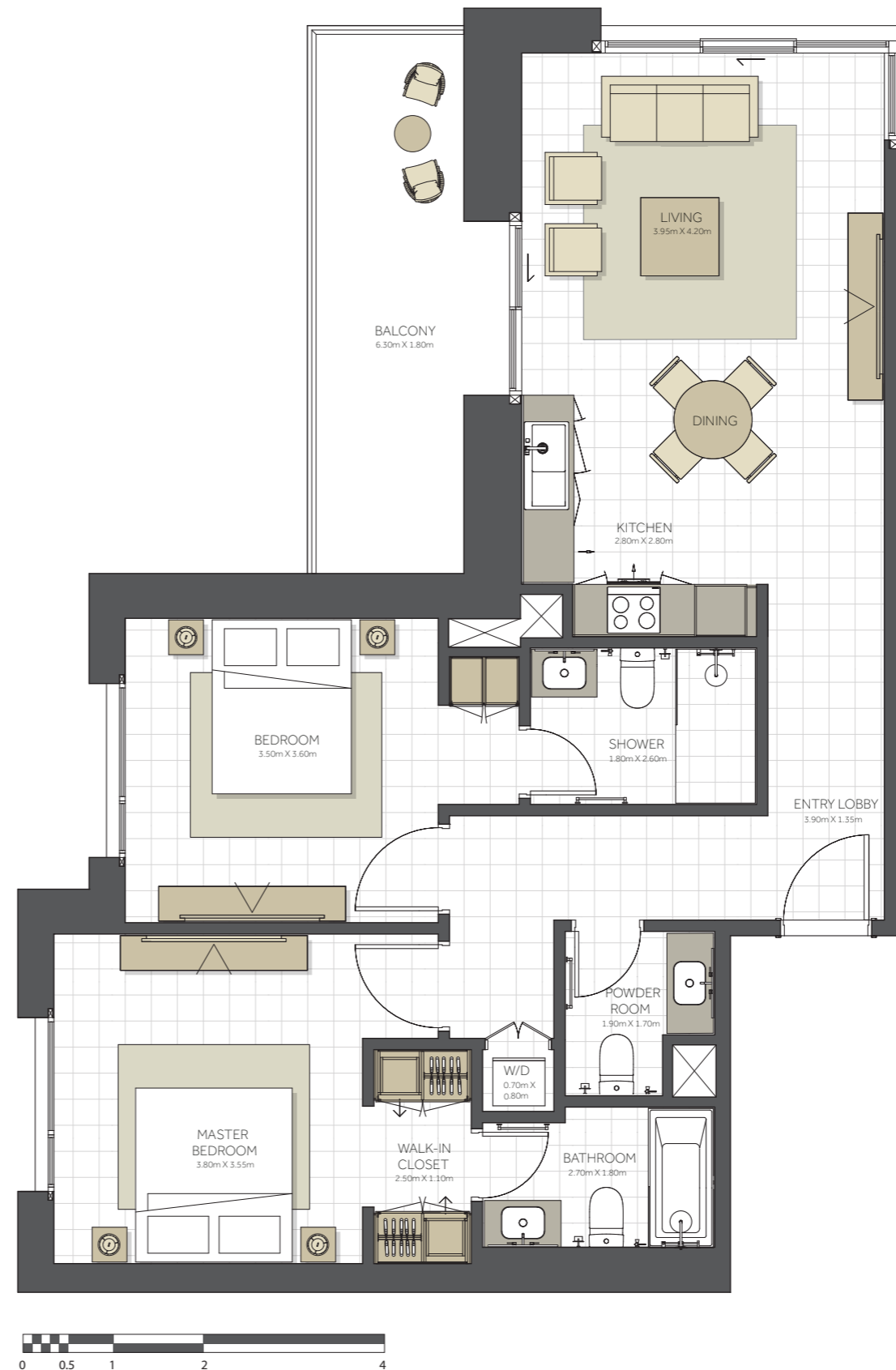
Level 11



Level 12



Level 13



جزيرة مريم  
MARYAM ISLAND  
SHARJAH

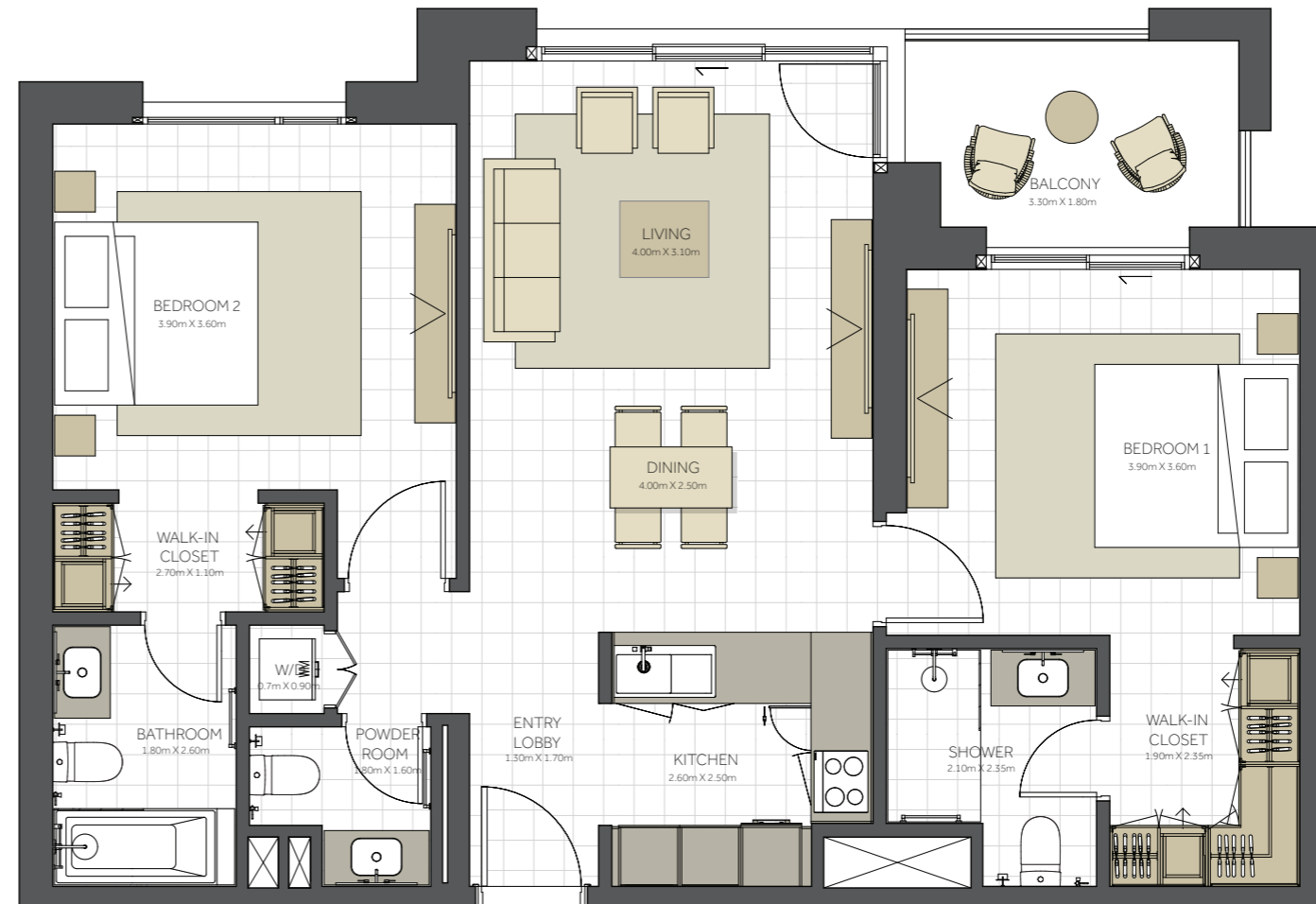
### Disclaimer:

1. All room dimensions are measured to structural elements and exclude all finishes and construction tolerances. 2. All dimensions have been provided by our consultant architects. 3. All materials, dimensions and drawings are approximate. Information is subject to change without notice. 4. Actual suite area may vary from the stated area. Drawings not to scale. The developer reserves the right to make revisions. 5. Calculation of suite area is measured as the area bounded by the centre line of the demising or partition walls separating one unit from another unit, the exterior face of all exterior walls, and the exterior face of the corridor wall enclosing the adjoining unit. 6. Calculation of balcony area is measured as the area bounded by the centre line of the demising or partition walls separating one unit from another unit, the outmost face of the enclosing guard and the external face of the unit adjoining the balcony. 7. The units are measured at typical floor in the building. Columns may vary in size depending on the floor level.



## TOPAZ RESIDENCES

|                      |                                                                               |
|----------------------|-------------------------------------------------------------------------------|
| <b>BUILDING</b>      | <b>TOPAZ - 2BR</b>                                                            |
| <b>2 BEDROOM</b>     | <b>TYPE C</b>                                                                 |
| <b>UNIT NO.</b>      | <b>214, 314, 414, 514, 614,<br/>714, 814, 914, 1014,<br/>1112, 1210, 1310</b> |
| <b>SUITE AREA.</b>   | <b>98m<sup>2</sup> (1.054sq.ft)</b>                                           |
| <b>BALCONY AREA.</b> | <b>6 m<sup>2</sup> (64sq.ft)</b>                                              |
| <b>TOTAL AREA</b>    | <b>104m<sup>2</sup> (1.119 sq.ft)</b>                                         |



Level 02 - 10



Level 11



Level 12



Level 13



EAGLE  
HILLS  
ABU DHABI



جزيرة مريم  
MARYAM ISLAND  
SHARJAH

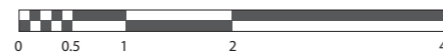
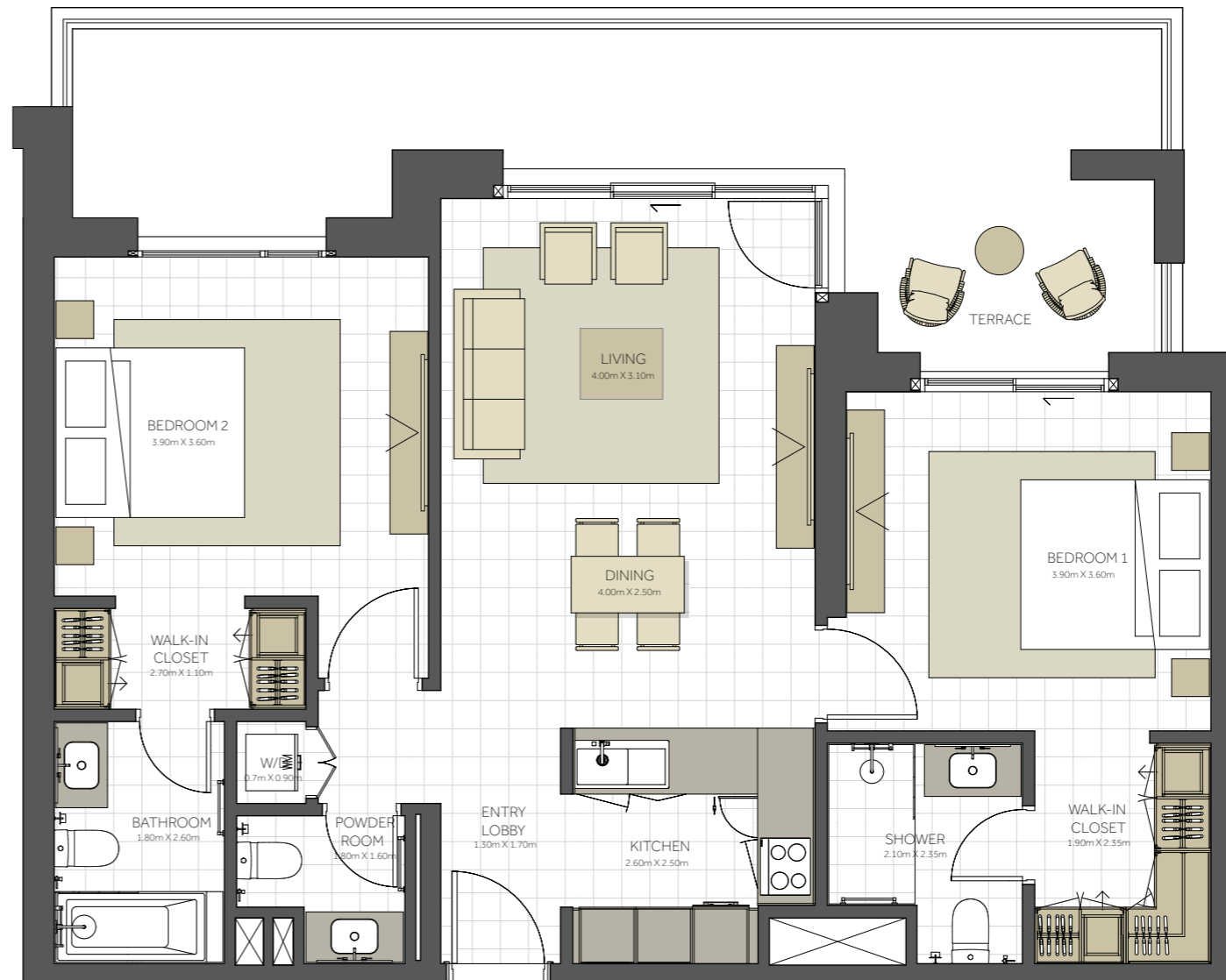
**Disclaimer:**

1. All room dimensions are measured to structural elements and exclude all finishes and construction tolerances. 2. All dimensions have been provided by our consultant architects. 3. All materials, dimensions and drawings are approximate. Information is subject to change without notice. 4. Actual suite area may vary from the stated area. Drawings not to scale. The developer reserves the right to make revisions. 5. Calculation of suite area is measured as the area bounded by the centre line of the demising or partition walls separating one unit from another unit, the exterior face of all exterior walls, and the exterior face of the corridor wall enclosing the adjoining unit. 6. Calculation of balcony area is measured as the area bounded by the centre line of the demising or partition walls separating one unit from another unit, the outmost face of the enclosing guard and the external face of the unit adjoining the balcony. 7. The units are measured at typical floor in the building. Columns may vary in size depending on the floor level.

# توباز

## TOPAZ RESIDENCES

|               |                                 |
|---------------|---------------------------------|
| BUILDING      | TOPAZ - 2BR                     |
| 2 BEDROOM     | TYPE C1                         |
| UNIT NO.      | 114                             |
| SUITE AREA.   | 98m <sup>2</sup> (1.054sq.ft)   |
| TERRACE AREA. | 27 m <sup>2</sup> (290 sq.ft)   |
| TOTAL AREA    | 125m <sup>2</sup> (1.345 sq.ft) |



Level 01



**Disclaimer:**

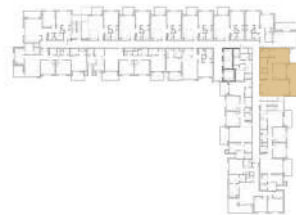
1. All room dimensions are measured to structural elements and exclude all finishes and construction tolerances. 2. All dimensions have been provided by our consultant architects. 3. All materials, dimensions and drawings are approximate. Information is subject to change without notice. 4. Actual suite area may vary from the stated area. Drawings not to scale. The developer reserves the right to make revisions. 5. Calculation of suite area is measured as the area bounded by the centre line of the demising or partition walls separating one unit from another unit, the exterior face of all exterior walls, and the exterior face of the corridor wall enclosing the adjoining unit. 6. Calculation of balcony area is measured as the area bounded by the centre line of the demising or partition walls separating one unit from another unit, the outmost face of the enclosing guard and the external face of the unit adjoining the balcony. 7. The units are measured at typical floor in the building. Columns may vary in size depending on the floor level.



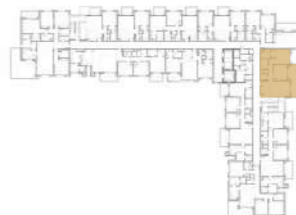
## TOPAZ RESIDENCES

|                      |                                                                                    |
|----------------------|------------------------------------------------------------------------------------|
| <b>BUILDING</b>      | <b>TOPAZ - 2BR</b>                                                                 |
| <b>2 BEDROOM</b>     | <b>TYPE D</b>                                                                      |
| <b>UNIT NO.</b>      | <b>104, 204, 304, 404,<br/>504, 604, 704, 804, 904,<br/>1004, 1104, 1203, 1303</b> |
| <b>SUITE AREA.</b>   | <b>98m<sup>2</sup> (1.054 sq.ft)</b>                                               |
| <b>BALCONY AREA.</b> | <b>22 m<sup>2</sup> (236 sq.ft)</b>                                                |
| <b>TOTAL AREA</b>    | <b>120 m<sup>2</sup> (1.291 sq.ft)</b>                                             |

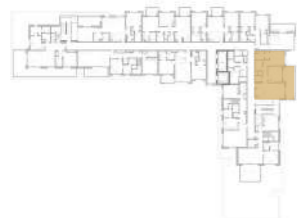
Level 01 - 10



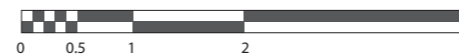
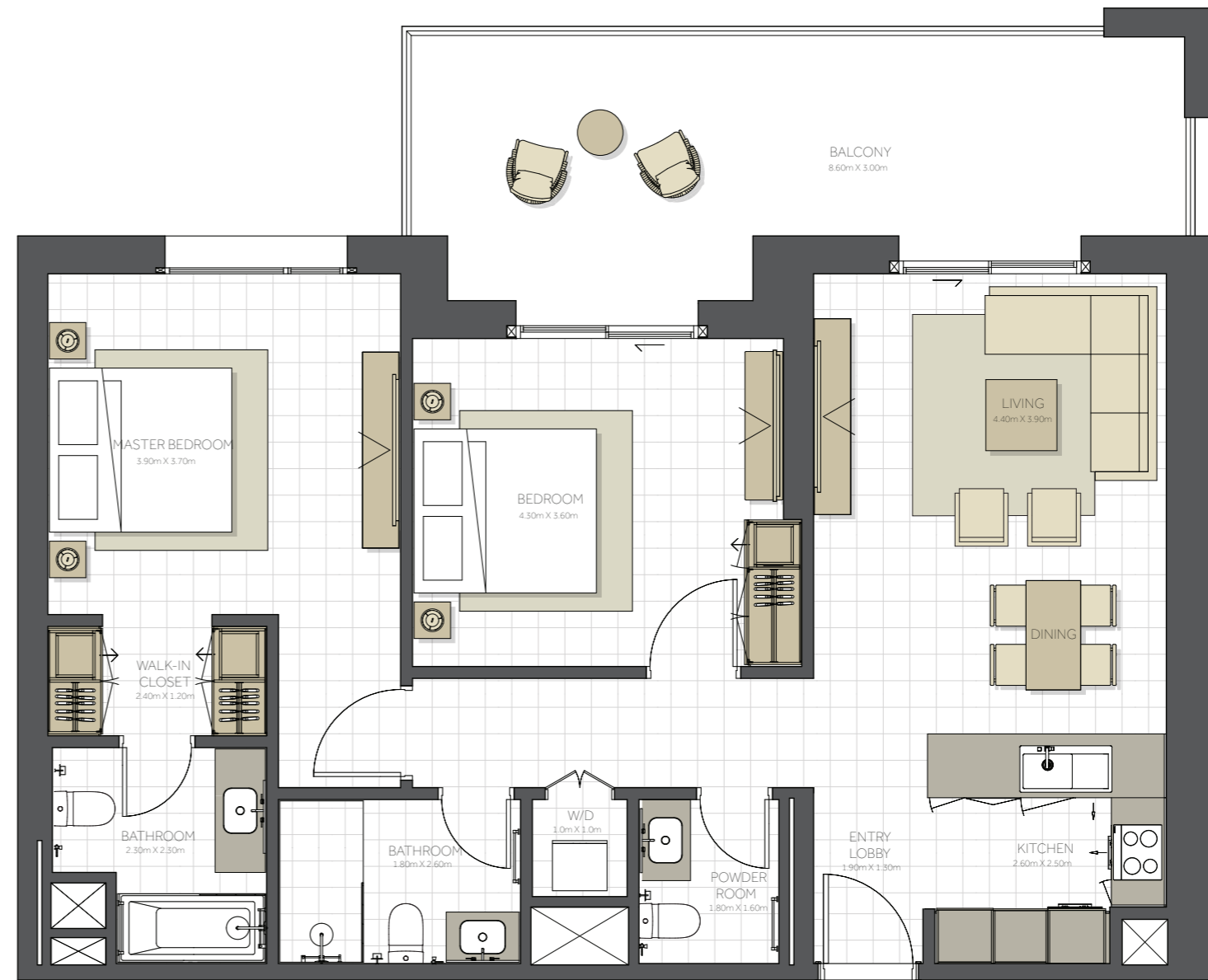
Level 11



Level 12



Level 13



جزيرة مريم  
MARYAM ISLAND  
SHARJAH

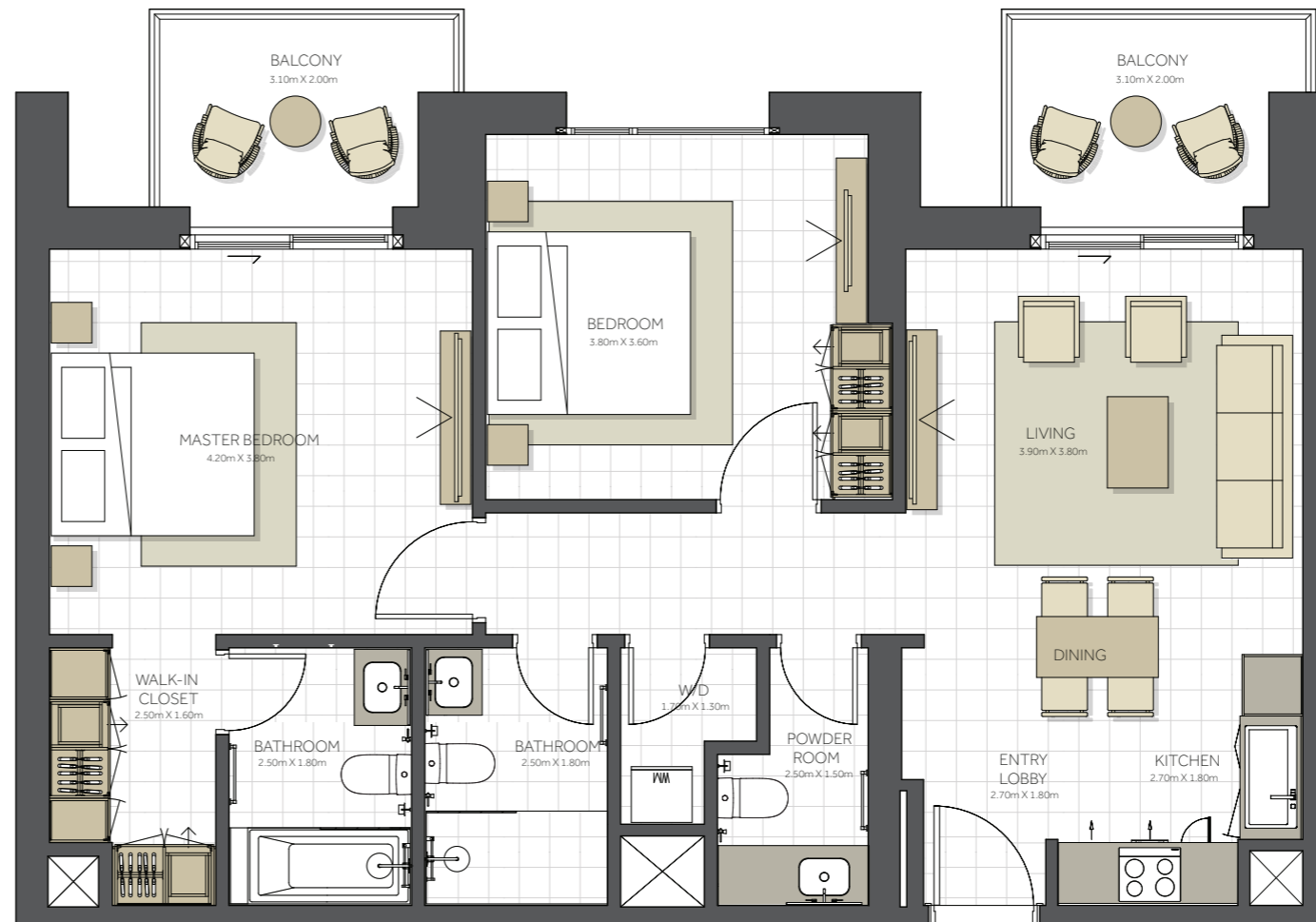
**Disclaimer:**

1. All room dimensions are measured to structural elements and exclude all finishes and construction tolerances. 2. All dimensions have been provided by our consultant architects. 3. All materials, dimensions and drawings are approximate. Information is subject to change without notice. 4. Actual suite area may vary from the stated area. Drawings not to scale. The developer reserves the right to make revisions. 5. Calculation of suite area is measured as the area bounded by the centre line of the demising or partition walls separating one unit from another unit, the exterior face of all exterior walls, and the exterior face of the corridor wall enclosing the adjoining unit. 6. Calculation of balcony area is measured as the area bounded by the centre line of the demising or partition walls separating one unit from another unit, the outmost face of the enclosing guard and the external face of the unit adjoining the balcony. 7. The units are measured at typical floor in the building. Columns may vary in size depending on the floor level.



# TOPAZ RESIDENCES

|                      |                                       |
|----------------------|---------------------------------------|
| <b>BUILDING</b>      | <b>TOPAZ - 2BR</b>                    |
| <b>2 BEDROOM</b>     | <b>TYPE E</b>                         |
| <b>UNIT NO.</b>      | <b>1107, 1206, 1306</b>               |
| <b>SUITE AREA.</b>   | <b>94m<sup>2</sup> (1.011 sq.ft)</b>  |
| <b>BALCONY AREA.</b> | <b>12 m<sup>2</sup> (129 sq.ft)</b>   |
| <b>TOTAL AREA</b>    | <b>106m<sup>2</sup> (1.140 sq.ft)</b> |



Level 11



Level 12



Level 13



جزيرة مريم  
MARYAM ISLAND  
SHARJAH

**Disclaimer:**

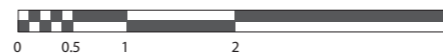
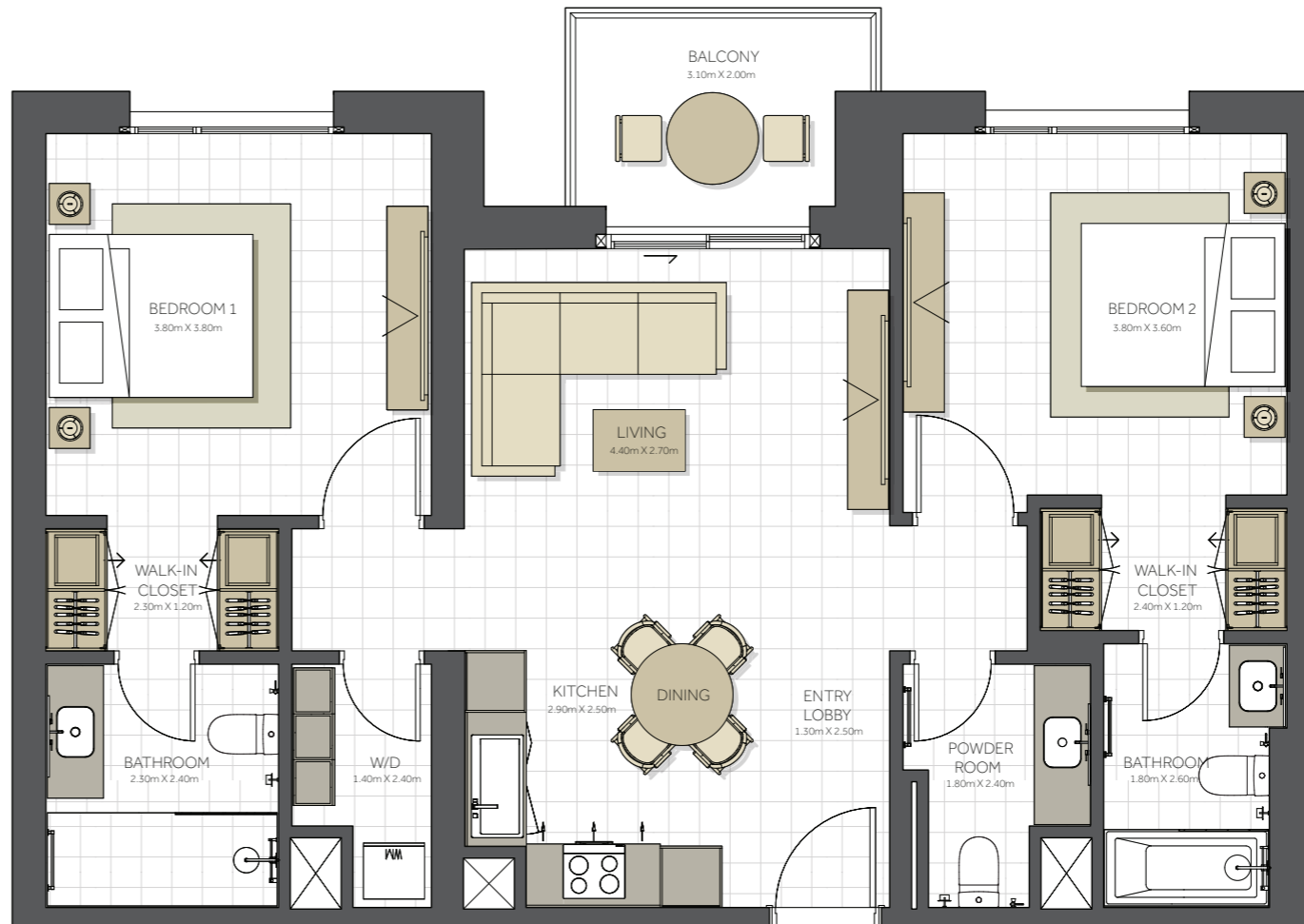
1. All room dimensions are measured to structural elements and exclude all finishes and construction tolerances. 2. All dimensions have been provided by our consultant architects. 3. All materials, dimensions and drawings are approximate. Information is subject to change without notice. 4. Actual suite area may vary from the stated area. Drawings not to scale. The developer reserves the right to make revisions. 5. Calculation of suite area is measured as the area bounded by the centre line of the demising or partition walls separating one unit from another unit, the exterior face of all exterior walls, and the exterior face of the corridor wall enclosing the adjoining unit. 6. Calculation of balcony area is measured as the area bounded by the centre line of the demising or partition walls separating one unit from another unit, the outmost face of the enclosing guard and the external face of the unit adjoining the balcony. 7. The units are measured at typical floor in the building. Columns may vary in size depending on the floor level.





# TOPAZ RESIDENCES

|                      |                                       |
|----------------------|---------------------------------------|
| <b>BUILDING</b>      | <b>TOPAZ - 2BR</b>                    |
| <b>2 BEDROOM</b>     | <b>TYPE F</b>                         |
| <b>UNIT NO.</b>      | <b>1106, 1205, 1305</b>               |
| <b>SUITE AREA.</b>   | <b>96m<sup>2</sup> (1.033 sq.ft)</b>  |
| <b>BALCONY AREA.</b> | <b>6m<sup>2</sup> (64 sq.ft)</b>      |
| <b>TOTAL AREA</b>    | <b>102m<sup>2</sup> (1.097 sq.ft)</b> |



Level 11



Level 12



Level 13



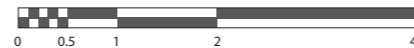
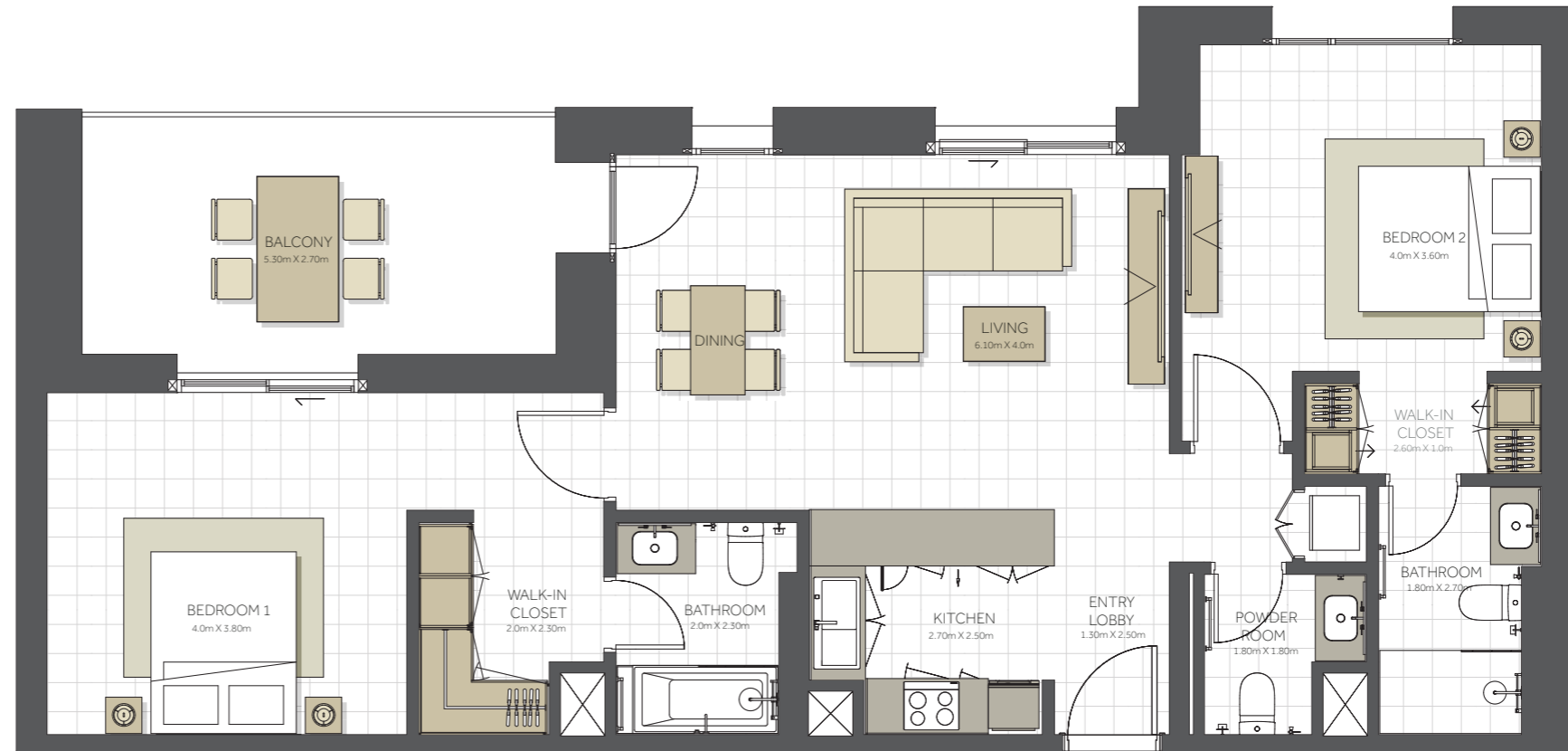
**Disclaimer:**

1. All room dimensions are measured to structural elements and exclude all finishes and construction tolerances. 2. All dimensions have been provided by our consultant architects. 3. All materials, dimensions and drawings are approximate. Information is subject to change without notice. 4. Actual suite area may vary from the stated area. Drawings not to scale. The developer reserves the right to make revisions. 5. Calculation of suite area is measured as the area bounded by the centre line of the demising or partition walls separating one unit from another unit, the exterior face of all exterior walls, and the exterior face of the corridor wall enclosing the adjoining unit. 6. Calculation of balcony area is measured as the area bounded by the centre line of the demising or partition walls separating one unit from another unit, the outmost face of the enclosing guard and the external face of the unit adjoining the balcony. 7. The units are measured at typical floor in the building. Columns may vary in size depending on the floor level.



# TOPAZ RESIDENCES

|                      |                                        |
|----------------------|----------------------------------------|
| <b>BUILDING</b>      | <b>TOPAZ - 2BR</b>                     |
| <b>2 BEDROOM</b>     | <b>TYPE G</b>                          |
| <b>UNIT NO.</b>      | <b>1207, 1307</b>                      |
| <b>SUITE AREA.</b>   | <b>105m<sup>2</sup> (1.130 sq.ft)</b>  |
| <b>BALCONY AREA.</b> | <b>15 m<sup>2</sup> (161 sq.ft)</b>    |
| <b>TOTAL AREA</b>    | <b>120 m<sup>2</sup> (1.291 sq.ft)</b> |



Level 12



Level 13



جزيرة مريم  
MARYAM ISLAND  
SHARJAH

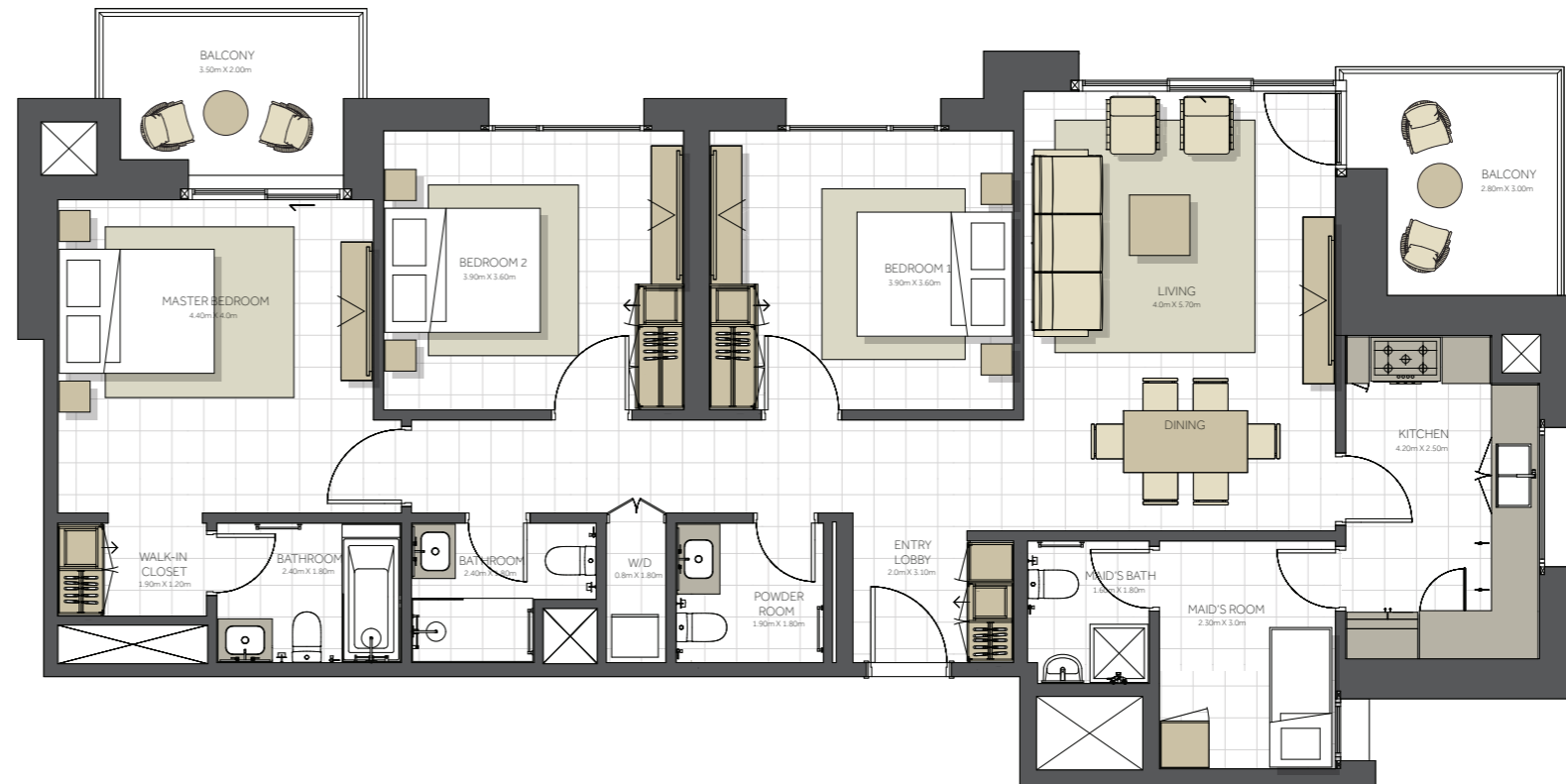
### Disclaimer:

1. All room dimensions are measured to structural elements and exclude all finishes and construction tolerances. 2. All dimensions have been provided by our consultant architects. 3. All materials, dimensions and drawings are approximate. Information is subject to change without notice. 4. Actual suite area may vary from the stated area. Drawings not to scale. The developer reserves the right to make revisions. 5. Calculation of suite area is measured as the area bounded by the centre line of the demising or partition walls separating one unit from another unit, the exterior face of all exterior walls, and the exterior face of the corridor wall enclosing the adjoining unit. 6. Calculation of balcony area is measured as the area bounded by the centre line of the demising or partition walls separating one unit from another unit, the outmost face of the enclosing guard and the external face of the unit adjoining the balcony. 7. The units are measured at typical floor in the building. Columns may vary in size depending on the floor level.



# TOPAZ RESIDENCES

|                      |                                                     |
|----------------------|-----------------------------------------------------|
| <b>BUILDING</b>      | <b>TOPAZ - 3BR</b>                                  |
| <b>3 BEDROOM</b>     | <b>TYPE A</b>                                       |
| <b>UNIT NO.</b>      | <b>212, 312, 412, 512, 612, 712, 812, 912, 1012</b> |
| <b>SUITE AREA.</b>   | <b>140m<sup>2</sup> (1.507 sq.ft)</b>               |
| <b>BALCONY AREA.</b> | <b>14 m<sup>2</sup> (150 sq.ft)</b>                 |
| <b>TOTAL AREA</b>    | <b>154 m<sup>2</sup> (1.657 sq.ft)</b>              |



Level 02 - 10



جزيرة مريم  
MARYAM ISLAND  
SHARJAH

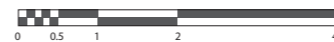
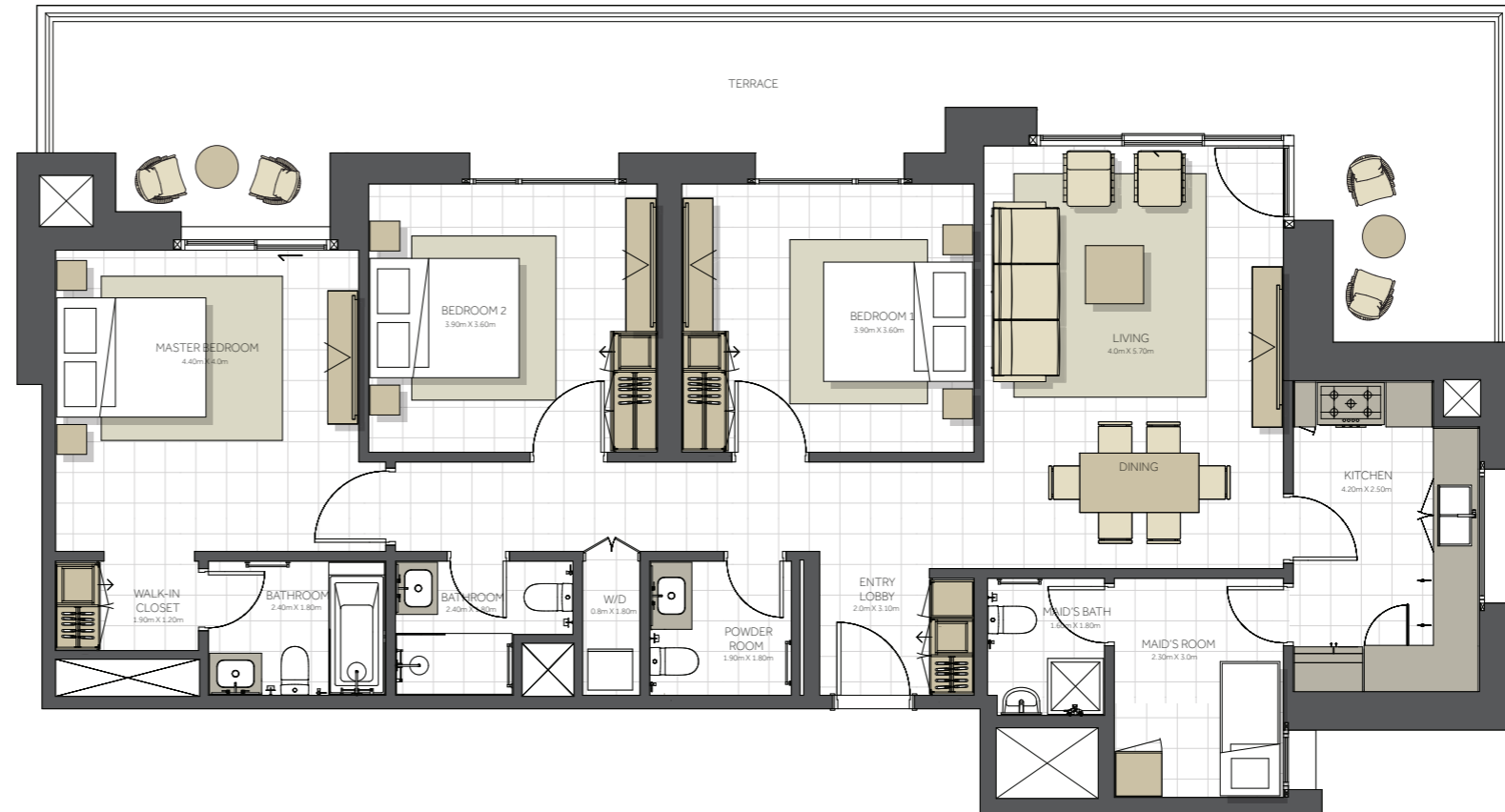
### Disclaimer:

1. All room dimensions are measured to structural elements and exclude all finishes and construction tolerances. 2. All dimensions have been provided by our consultant architects. 3. All materials, dimensions and drawings are approximate. Information is subject to change without notice. 4. Actual suite area may vary from the stated area. Drawings not to scale. The developer reserves the right to make revisions. 5. Calculation of suite area is measured as the area bounded by the centre line of the demising or partition walls separating one unit from another unit, the exterior face of all exterior walls, and the exterior face of the corridor wall enclosing the adjoining unit. 6. Calculation of balcony area is measured as the area bounded by the centre line of the demising or partition walls separating one unit from another unit, the outmost face of the enclosing guard and the external face of the unit adjoining the balcony. 7. The units are measured at typical floor in the building. Columns may vary in size depending on the floor level.



# TOPAZ RESIDENCES

|                      |                                        |
|----------------------|----------------------------------------|
| <b>BUILDING</b>      | <b>TOPAZ - 3BR</b>                     |
| <b>3 BEDROOM</b>     | <b>TYPE A1</b>                         |
| <b>UNIT NO.</b>      | <b>112</b>                             |
| <b>SUITE AREA.</b>   | <b>140m<sup>2</sup> (1.507sq.ft)</b>   |
| <b>TERRACE AREA.</b> | <b>48 m<sup>2</sup> (517 sq.ft)</b>    |
| <b>TOTAL AREA</b>    | <b>188 m<sup>2</sup> (2.023 sq.ft)</b> |



## Level 01



### Disclaimer:

1. All room dimensions are measured to structural elements and exclude all finishes and construction tolerances. 2. All dimensions have been provided by our consultant architects. 3. All materials, dimensions and drawings are approximate. Information is subject to change without notice. 4. Actual suite area may vary from the stated area. Drawings not to scale. The developer reserves the right to make revisions. 5. Calculation of suite area is measured as the area bounded by the centre line of the demising or partition walls separating one unit from another unit, the exterior face of all exterior walls, and the exterior face of the corridor wall enclosing the adjoining unit. 6. Calculation of balcony area is measured as the area bounded by the centre line of the demising or partition walls separating one unit from another unit, the outmost face of the enclosing guard and the external face of the unit adjoining the balcony. 7. The units are measured at typical floor in the building. Columns may vary in size depending on the floor level.



## TOPAZ RESIDENCES

|                      |                                                                   |
|----------------------|-------------------------------------------------------------------|
| <b>BUILDING</b>      | <b>TOPAZ - 3BR</b>                                                |
| <b>3 BEDROOM</b>     | <b>TYPE B</b>                                                     |
| <b>UNIT NO.</b>      | <b>202, 302, 402, 502,<br/>602, 702, 802, 902,<br/>1002, 1102</b> |
| <b>SUITE AREA.</b>   | <b>140m<sup>2</sup> (1.507 sq.ft)</b>                             |
| <b>BALCONY AREA.</b> | <b>17 m<sup>2</sup> (183 sq.ft)</b>                               |
| <b>TOTAL AREA</b>    | <b>157 m<sup>2</sup> (1.690 sq.ft)</b>                            |



Level 02 - 10



Level 11



EAGLE  
HILLS  
ABU DHABI



جزيرة مريم  
MARYAM ISLAND  
SHARJAH

**Disclaimer:**

1. All room dimensions are measured to structural elements and exclude all finishes and construction tolerances. 2. All dimensions have been provided by our consultant architects. 3. All materials, dimensions and drawings are approximate. Information is subject to change without notice. 4. Actual suite area may vary from the stated area. Drawings not to scale. The developer reserves the right to make revisions. 5. Calculation of suite area is measured as the area bounded by the centre line of the demising or partition walls separating one unit from another unit, the exterior face of all exterior walls, and the exterior face of the corridor wall enclosing the adjoining unit. 6. Calculation of balcony area is measured as the area bounded by the centre line of the demising or partition walls separating one unit from another unit, the outmost face of the enclosing guard and the external face of the unit adjoining the balcony. 7. The units are measured at typical floor in the building. Columns may vary in size depending on the floor level.



# TOPAZ RESIDENCES

|                      |                                        |
|----------------------|----------------------------------------|
| <b>BUILDING</b>      | <b>TOPAZ - 3BR</b>                     |
| <b>3 BEDROOM</b>     | <b>TYPE B1</b>                         |
| <b>UNIT NO.</b>      | <b>102</b>                             |
| <b>SUITE AREA.</b>   | <b>140m<sup>2</sup> (1.506 sq.ft)</b>  |
| <b>TERACCE AREA.</b> | <b>52 m<sup>2</sup> (560 sq.ft)</b>    |
| <b>TOTAL AREA</b>    | <b>192 m<sup>2</sup> (2.067 sq.ft)</b> |



Level 01



جزيرة مريم  
MARYAM ISLAND  
SHARJAH

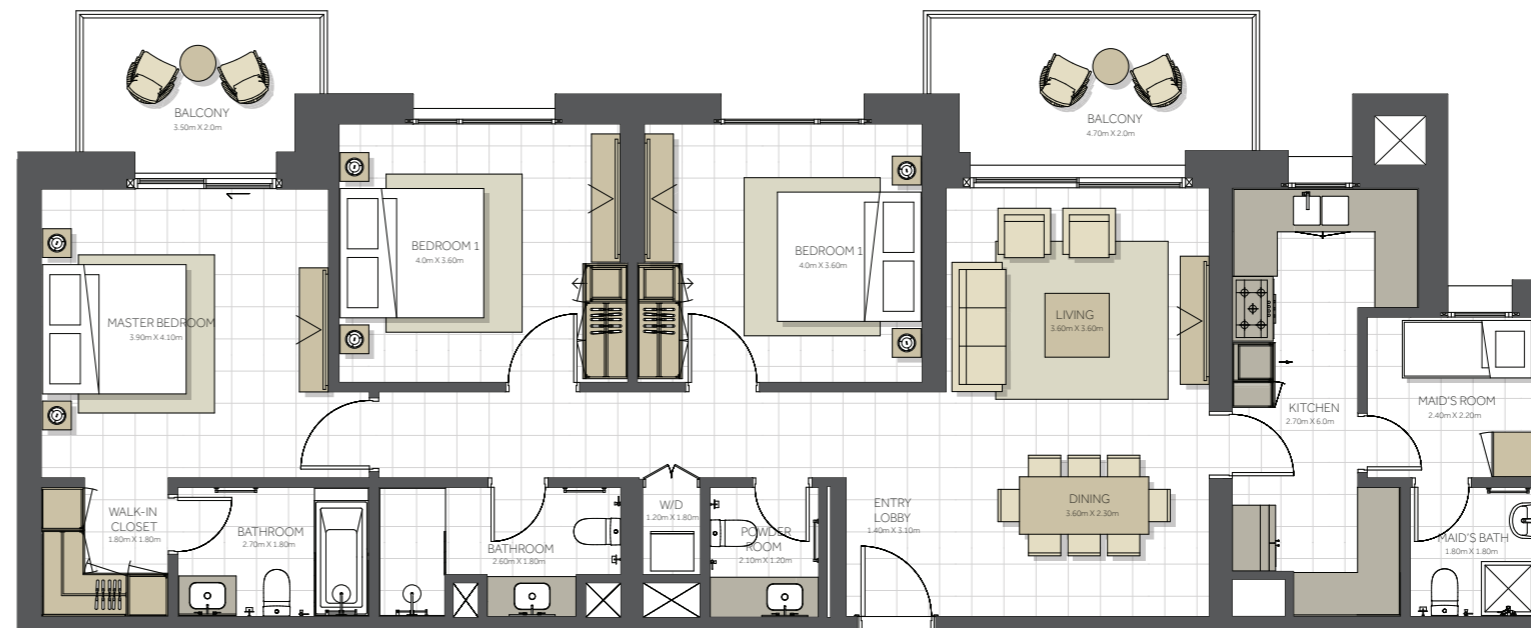
### Disclaimer:

1. All room dimensions are measured to structural elements and exclude all finishes and construction tolerances. 2. All dimensions have been provided by our consultant architects. 3. All materials, dimensions and drawings are approximate. Information is subject to change without notice. 4. Actual suite area may vary from the stated area. Drawings not to scale. The developer reserves the right to make revisions. 5. Calculation of suite area is measured as the area bounded by the centre line of the demising or partition walls separating one unit from another unit, the exterior face of all exterior walls, and the exterior face of the corridor wall enclosing the adjoining unit. 6. Calculation of balcony area is measured as the area bounded by the centre line of the demising or partition walls separating one unit from another unit, the outmost face of the enclosing guard and the external face of the unit adjoining the balcony. 7. The units are measured at typical floor in the building. Columns may vary in size depending on the floor level.

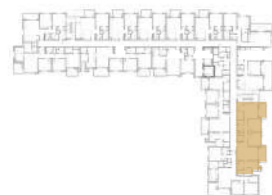


# TOPAZ RESIDENCES

|                      |                                                                                                                                                           |
|----------------------|-----------------------------------------------------------------------------------------------------------------------------------------------------------|
| <b>BUILDING</b>      | <b>TOPAZ - 3BR</b>                                                                                                                                        |
| <b>3 BEDROOM</b>     | <b>TYPE C</b>                                                                                                                                             |
| <b>UNIT NO.</b>      | 103, 201, 203, 213, 301, 303, 313, 401, 403, 413, 501, 503, 513, 601, 603, 613, 701, 703, 713, 801, 803, 813, 901, 903, 913, 1001, 1003, 1013, 1101, 1103 |
| <b>SUITE AREA.</b>   | <b>137m<sup>2</sup> (1.475 sq.ft)</b>                                                                                                                     |
| <b>BALCONY AREA.</b> | <b>16 m<sup>2</sup> (172 sq.ft)</b>                                                                                                                       |
| <b>TOTAL AREA</b>    | <b>153 m<sup>2</sup> (1.647 sq.ft)</b>                                                                                                                    |



Level 01



Level 02 - 10



Level 11



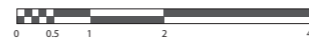
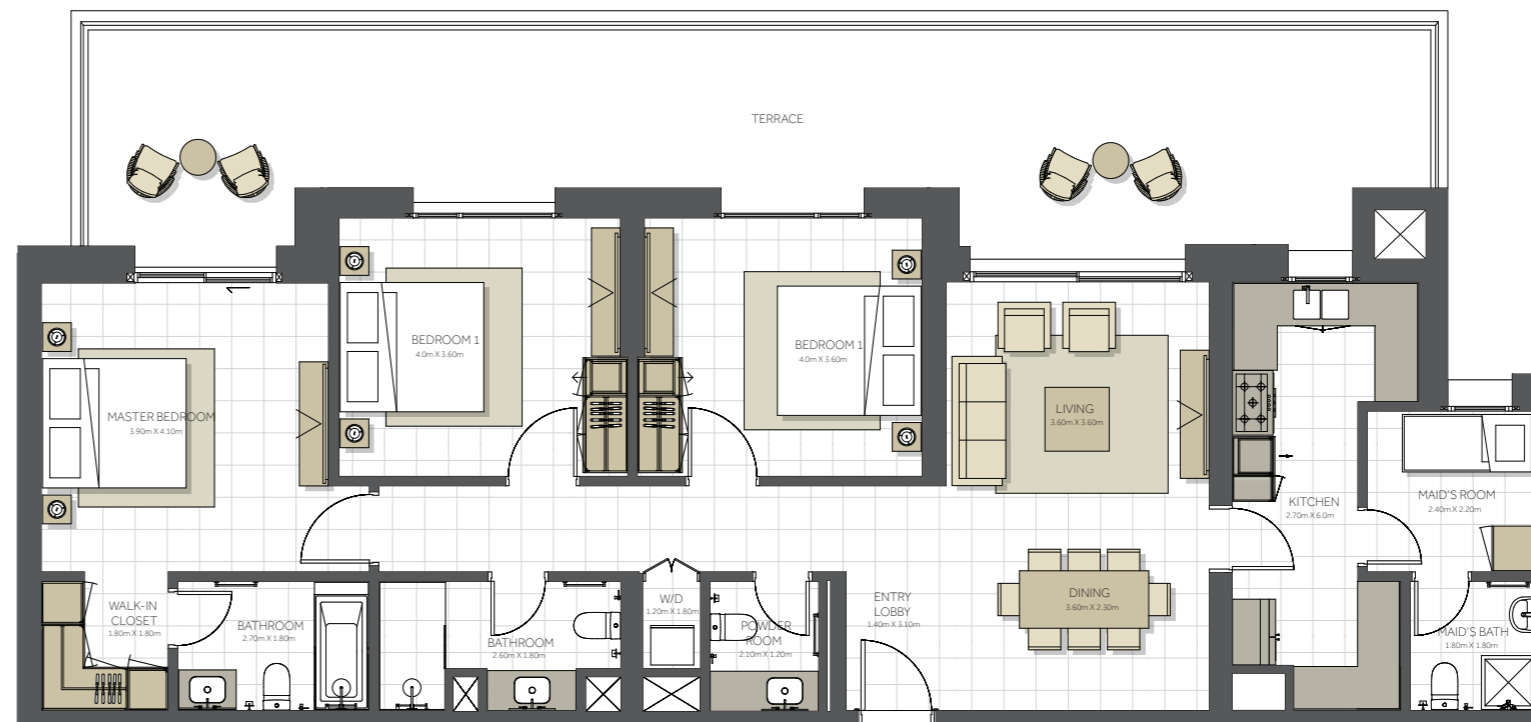
**Disclaimer:**

1. All room dimensions are measured to structural elements and exclude all finishes and construction tolerances. 2. All dimensions have been provided by our consultant architects. 3. All materials, dimensions and drawings are approximate. Information is subject to change without notice. 4. Actual suite area may vary from the stated area. Drawings not to scale. The developer reserves the right to make revisions. 5. Calculation of suite area is measured as the area bounded by the centre line of the demising or partition walls separating one unit from another unit, the exterior face of all exterior walls, and the exterior face of the corridor wall enclosing the adjoining unit. 6. Calculation of balcony area is measured as the area bounded by the centre line of the demising or partition walls separating one unit from another unit, the outmost face of the enclosing guard and the external face of the unit adjoining the balcony. 7. The units are measured at typical floor in the building. Columns may vary in size depending on the floor level.



# TOPAZ RESIDENCES

|                      |                                        |
|----------------------|----------------------------------------|
| <b>BUILDING</b>      | <b>TOPAZ - 3BR</b>                     |
| <b>3 BEDROOM</b>     | <b>TYPE C1</b>                         |
| <b>UNIT NO.</b>      | <b>101</b>                             |
| <b>SUITE AREA.</b>   | <b>135m<sup>2</sup> (1.453 sq.ft)</b>  |
| <b>TERRACE AREA.</b> | <b>47 m<sup>2</sup> (506 sq.ft)</b>    |
| <b>TOTAL AREA</b>    | <b>185 m<sup>2</sup> (1.991 sq.ft)</b> |



## Level 01



جزيرة مريم  
MARYAM ISLAND  
SHARJAH

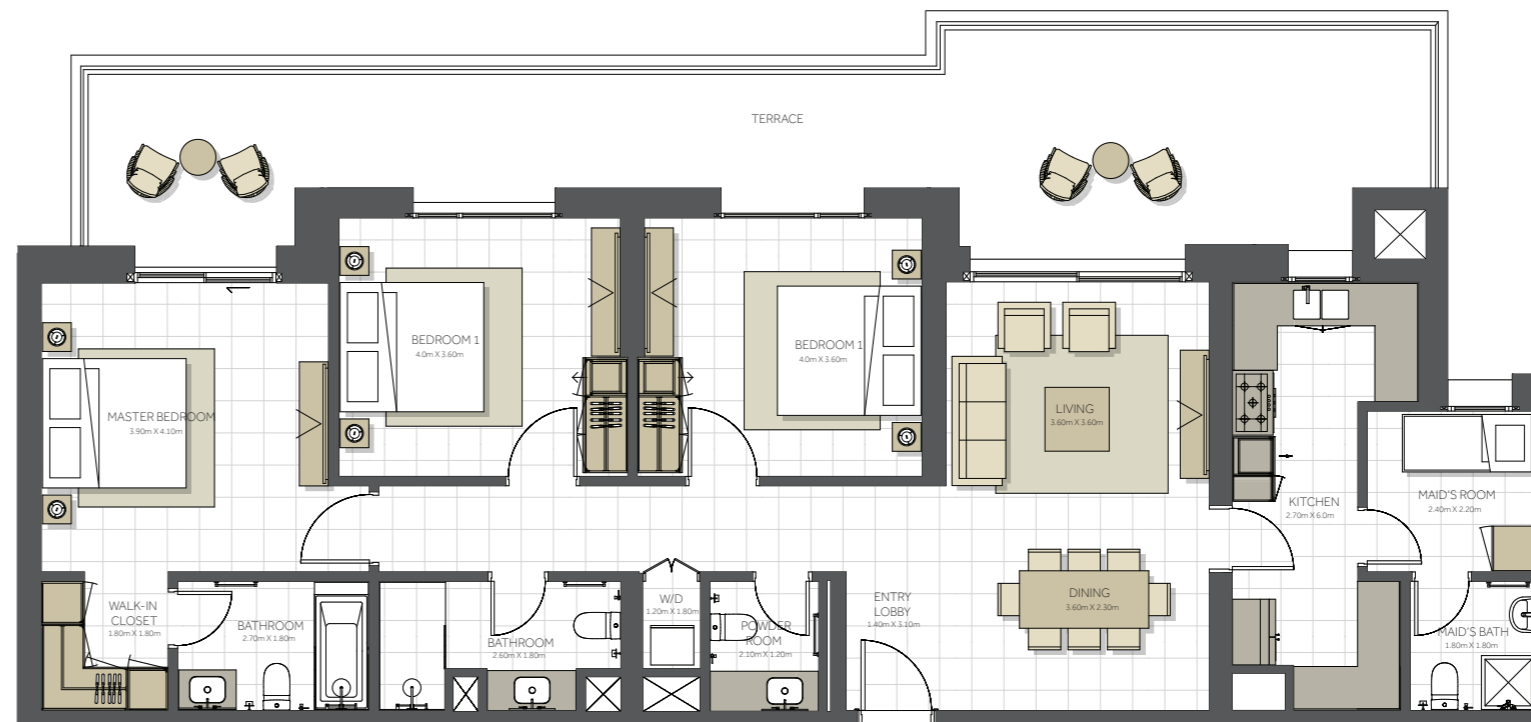
### Disclaimer:

1. All room dimensions are measured to structural elements and exclude all finishes and construction tolerances. 2. All dimensions have been provided by our consultant architects. 3. All materials, dimensions and drawings are approximate. Information is subject to change without notice. 4. Actual suite area may vary from the stated area. Drawings not to scale. The developer reserves the right to make revisions. 5. Calculation of suite area is measured as the area bounded by the centre line of the demising or partition walls separating one unit from another unit, the exterior face of all exterior walls, and the exterior face of the corridor wall enclosing the adjoining unit. 6. Calculation of balcony area is measured as the area bounded by the centre line of the demising or partition walls separating one unit from another unit, the outmost face of the enclosing guard and the external face of the unit adjoining the balcony. 7. The units are measured at typical floor in the building. Columns may vary in size depending on the floor level.



# TOPAZ RESIDENCES

|                      |                                        |
|----------------------|----------------------------------------|
| <b>BUILDING</b>      | <b>TOPAZ - 3BR</b>                     |
| <b>3 BEDROOM</b>     | <b>TYPE C2</b>                         |
| <b>UNIT NO.</b>      | <b>113</b>                             |
| <b>SUITE AREA.</b>   | <b>135m<sup>2</sup> (1.453 sq.ft)</b>  |
| <b>TERRACE AREA.</b> | <b>39 m<sup>2</sup> (420 sq.ft)</b>    |
| <b>TOTAL AREA</b>    | <b>177 m<sup>2</sup> (1.905 sq.ft)</b> |



## Level 01



جزيرة مريم  
MARYAM ISLAND  
SHARJAH

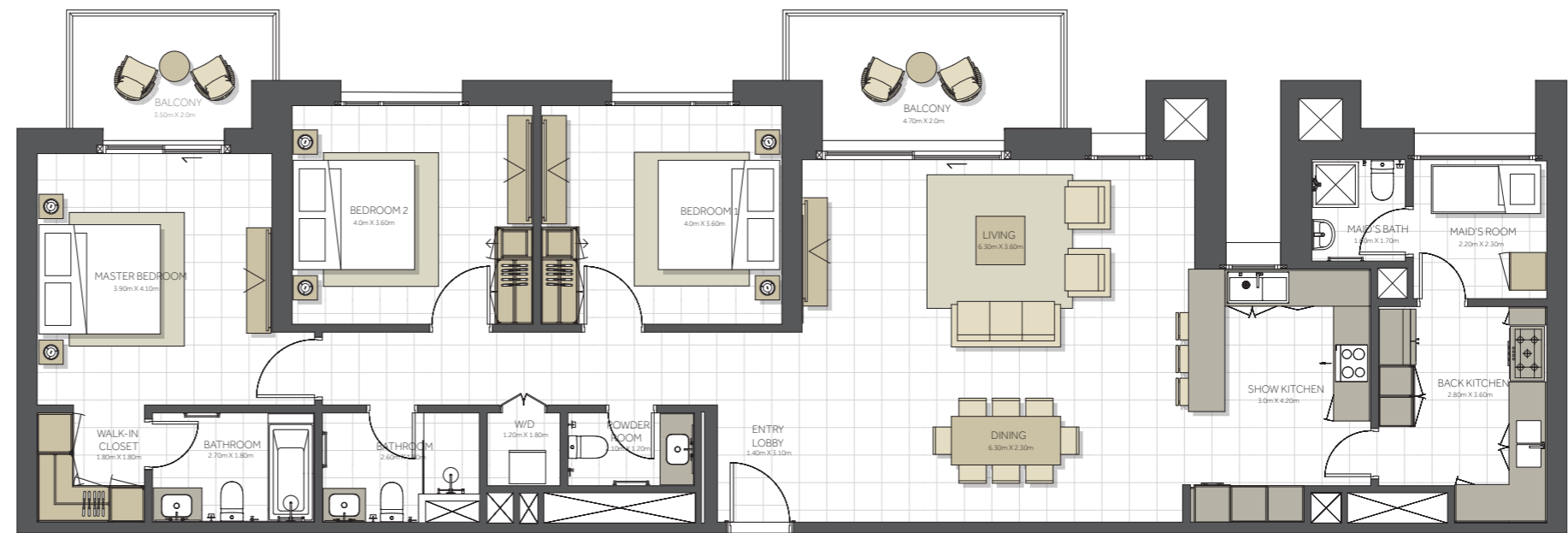
### Disclaimer:

1. All room dimensions are measured to structural elements and exclude all finishes and construction tolerances. 2. All dimensions have been provided by our consultant architects. 3. All materials, dimensions and drawings are approximate. Information is subject to change without notice. 4. Actual suite area may vary from the stated area. Drawings not to scale. The developer reserves the right to make revisions. 5. Calculation of suite area is measured as the area bounded by the centre line of the demising or partition walls separating one unit from another unit, the exterior face of all exterior walls, and the exterior face of the corridor wall enclosing the adjoining unit. 6. Calculation of balcony area is measured as the area bounded by the centre line of the demising or partition walls separating one unit from another unit, the outmost face of the enclosing guard and the external face of the unit adjoining the balcony. 7. The units are measured at typical floor in the building. Columns may vary in size depending on the floor level.



# TOPAZ RESIDENCES

|                      |                                        |
|----------------------|----------------------------------------|
| <b>BUILDING</b>      | <b>TOPAZ - 3BR</b>                     |
| <b>3 BEDROOM</b>     | <b>TYPE E</b>                          |
| <b>UNIT NO.</b>      | <b>1111</b>                            |
| <b>SUITE AREA.</b>   | <b>167 m<sup>2</sup> (1.797 sq.ft)</b> |
| <b>BALCONY AREA.</b> | <b>16 m<sup>2</sup> (172 sq.ft)</b>    |
| <b>TOTAL AREA</b>    | <b>183 m<sup>2</sup> (1.970 sq.ft)</b> |



Level 11



جزيرة مريم  
MARYAM ISLAND  
SHARJAH

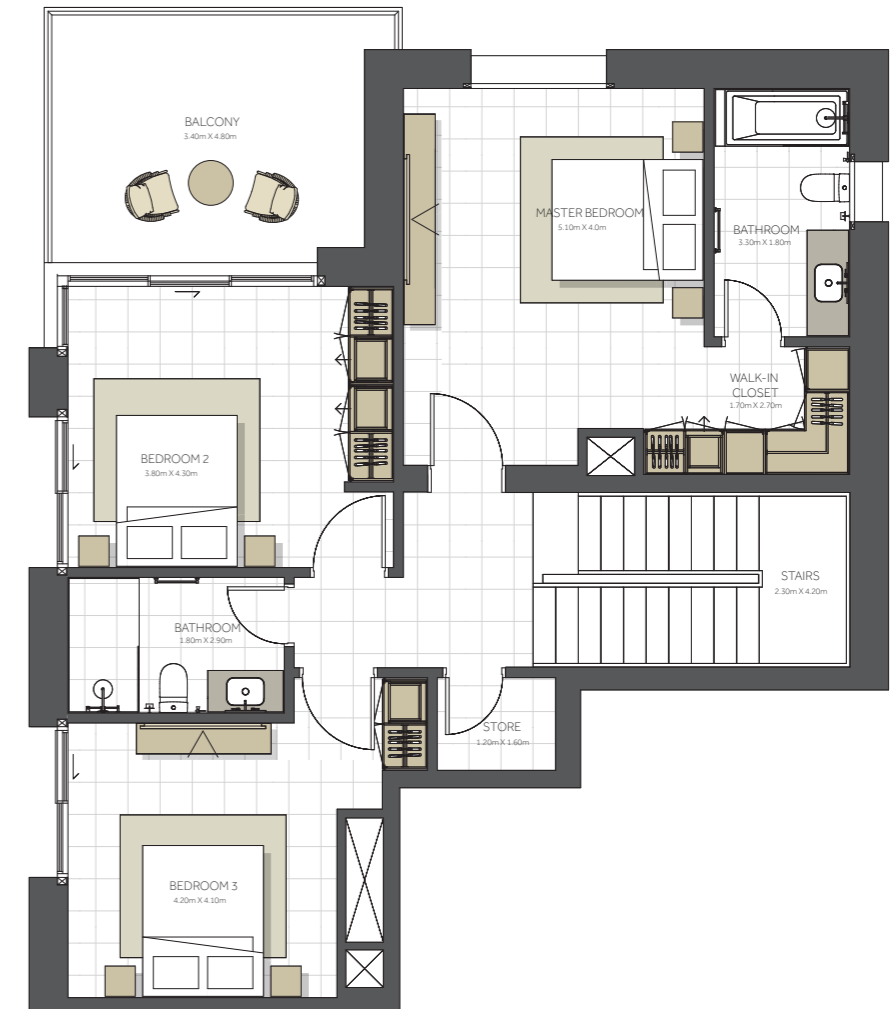
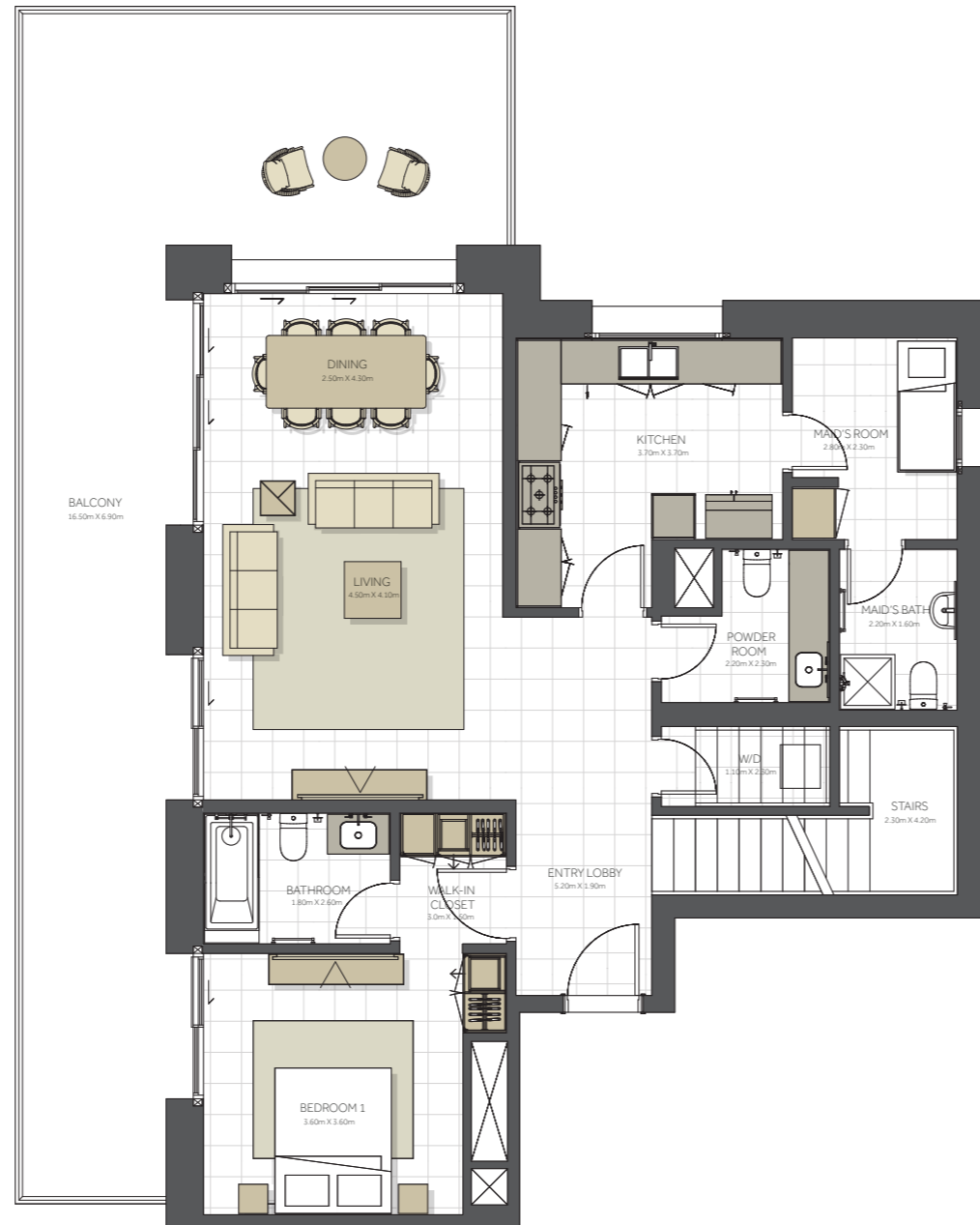
### Disclaimer:

1. All room dimensions are measured to structural elements and exclude all finishes and construction tolerances. 2. All dimensions have been provided by our consultant architects. 3. All materials, dimensions and drawings are approximate. Information is subject to change without notice. 4. Actual suite area may vary from the stated area. Drawings not to scale. The developer reserves the right to make revisions. 5. Calculation of suite area is measured as the area bounded by the centre line of the demising or partition walls separating one unit from another unit, the exterior face of all exterior walls, and the exterior face of the corridor wall enclosing the adjoining unit. 6. Calculation of balcony area is measured as the area bounded by the centre line of the demising or partition walls separating one unit from another unit, the outmost face of the enclosing guard and the external face of the unit adjoining the balcony. 7. The units are measured at typical floor in the building. Columns may vary in size depending on the floor level.



# TOPAZ RESIDENCES

|                      |                                        |
|----------------------|----------------------------------------|
| <b>BUILDING</b>      | <b>TOPAZ - 4BR</b>                     |
| <b>4 BEDROOM</b>     | <b>TYPE A Duplex</b>                   |
| <b>UNIT NO.</b>      | <b>1208</b>                            |
| <b>SUITE AREA.</b>   | <b>217 m<sup>2</sup> (2.336 sq.ft)</b> |
| <b>BALCONY AREA.</b> | <b>69 m<sup>2</sup> (743 sq.ft)</b>    |
| <b>TOTAL AREA</b>    | <b>286 m<sup>2</sup> (3.078 sq.ft)</b> |



Level 12

Level 13



### Disclaimer:

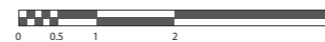
1. All room dimensions are measured to structural elements and exclude all finishes and construction tolerances. 2. All dimensions have been provided by our consultant architects. 3. All materials, dimensions and drawings are approximate. Information is subject to change without notice. 4. Actual suite area may vary from the stated area. Drawings not to scale. The developer reserves the right to make revisions. 5. Calculation of suite area is measured as the area bounded by the centre line of the demising or partition walls separating one unit from another unit, the exterior face of all exterior walls, and the exterior face of the corridor wall enclosing the adjoining unit. 6. Calculation of balcony area is measured as the area bounded by the centre line of the demising or partition walls separating one unit from another unit, the outmost face of the enclosing guard and the external face of the unit adjoining the balcony. 7. The units are measured at typical floor in the building. Columns may vary in size depending on the floor level.



## TOPAZ RESIDENCES

|               |                                  |
|---------------|----------------------------------|
| BUILDING      | TOPAZ - 4BR                      |
| 4 BEDROOM     | TYPE A                           |
| UNIT NO.      | 1110                             |
| SUITE AREA.   | 196m <sup>2</sup> (2.110 sq.ft)  |
| BALCONY AREA. | 46 m <sup>2</sup> (495 sq.ft)    |
| TOTAL AREA    | 242 m <sup>2</sup> (2.605 sq.ft) |

Level 11



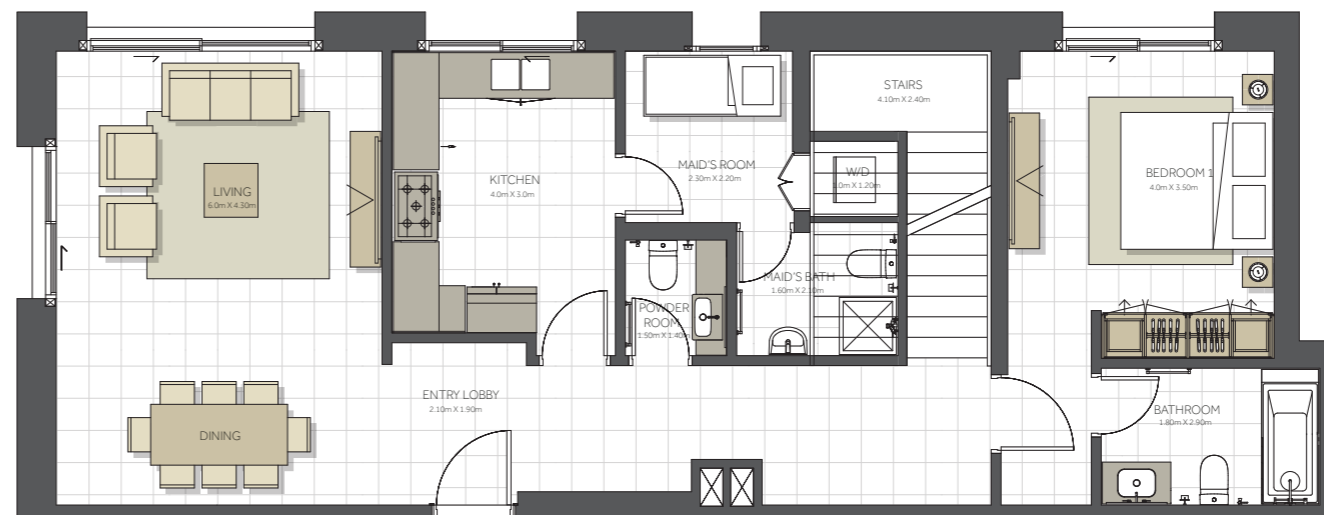
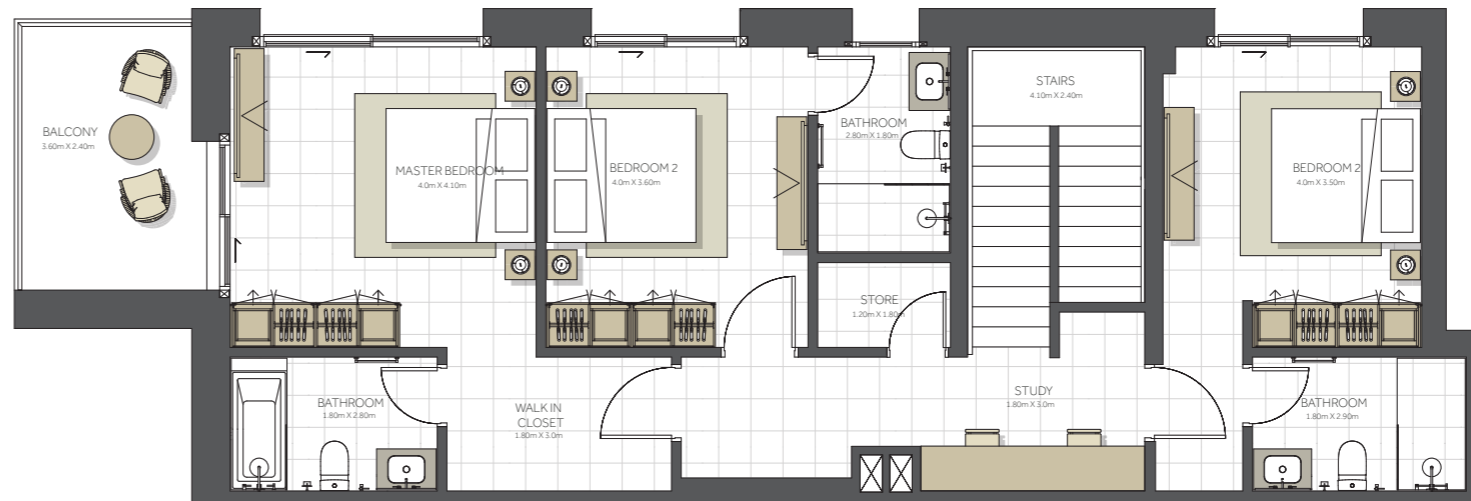
### Disclaimer:

1. All room dimensions are measured to structural elements and exclude all finishes and construction tolerances. 2. All dimensions have been provided by our consultant architects. 3. All materials, dimensions and drawings are approximate. Information is subject to change without notice. 4. Actual suite area may vary from the stated area. Drawings not to scale. The developer reserves the right to make revisions. 5. Calculation of suite area is measured as the area bounded by the centre line of the demising or partition walls separating one unit from another unit, the exterior face of all exterior walls, and the exterior face of the corridor wall enclosing the adjoining unit. 6. Calculation of balcony area is measured as the area bounded by the centre line of the demising or partition walls separating one unit from another unit, the outmost face of the enclosing guard and the external face of the unit adjoining the balcony. 7. The units are measured at typical floor in the building. Columns may vary in size depending on the floor level.

# توباز

## TOPAZ RESIDENCES

|                      |                                        |
|----------------------|----------------------------------------|
| <b>BUILDING</b>      | <b>TOPAZ - 4BR</b>                     |
| <b>4 BEDROOM</b>     | <b>TYPE B Duplex</b>                   |
| <b>UNIT NO.</b>      | <b>1201</b>                            |
| <b>SUITE AREA.</b>   | <b>214m<sup>2</sup> (2.303 sq.ft)</b>  |
| <b>BALCONY AREA.</b> | <b>10 m<sup>2</sup> (107 sq.ft)</b>    |
| <b>TOTAL AREA</b>    | <b>224 m<sup>2</sup> (2.411 sq.ft)</b> |



Level 12

Level 13



جزيرة مريم  
MARYAM ISLAND  
SHARJAH

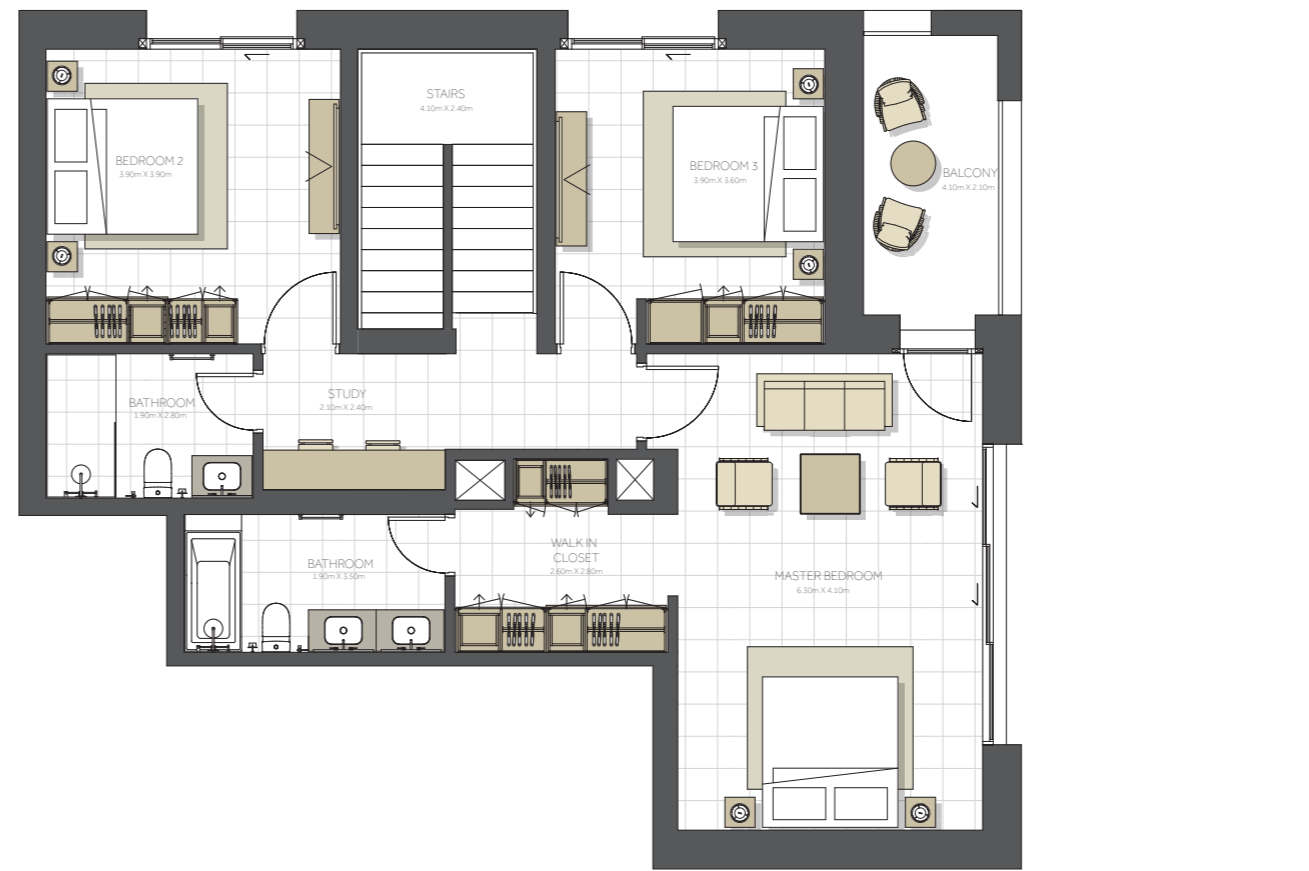
**Disclaimer:**

1. All room dimensions are measured to structural elements and exclude all finishes and construction tolerances. 2. All dimensions have been provided by our consultant architects. 3. All materials, dimensions and drawings are approximate. Information is subject to change without notice. 4. Actual suite area may vary from the stated area. Drawings not to scale. The developer reserves the right to make revisions. 5. Calculation of suite area is measured as the area bounded by the centre line of the demising or partition walls separating one unit from another unit, the exterior face of all exterior walls, and the exterior face of the corridor wall enclosing the adjoining unit. 6. Calculation of balcony area is measured as the area bounded by the centre line of the demising or partition walls separating one unit from another unit, the outmost face of the enclosing guard and the external face of the unit adjoining the balcony. 7. The units are measured at typical floor in the building. Columns may vary in size depending on the floor level.



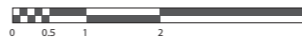
# TOPAZ RESIDENCES

|                      |                                        |
|----------------------|----------------------------------------|
| <b>BUILDING</b>      | <b>TOPAZ - 4BR</b>                     |
| <b>4 BEDROOM</b>     | <b>TYPE C Duplex</b>                   |
| <b>UNIT NO.</b>      | <b>1202</b>                            |
| <b>SUITE AREA.</b>   | <b>221m<sup>2</sup> (2.379 sq.ft)</b>  |
| <b>BALCONY AREA.</b> | <b>30 m<sup>2</sup> (323 sq.ft)</b>    |
| <b>TOTAL AREA</b>    | <b>251 m<sup>2</sup> (2.702 sq.ft)</b> |



Level 12

Level 13



جزيرة مريم  
MARYAM ISLAND  
SHARJAH

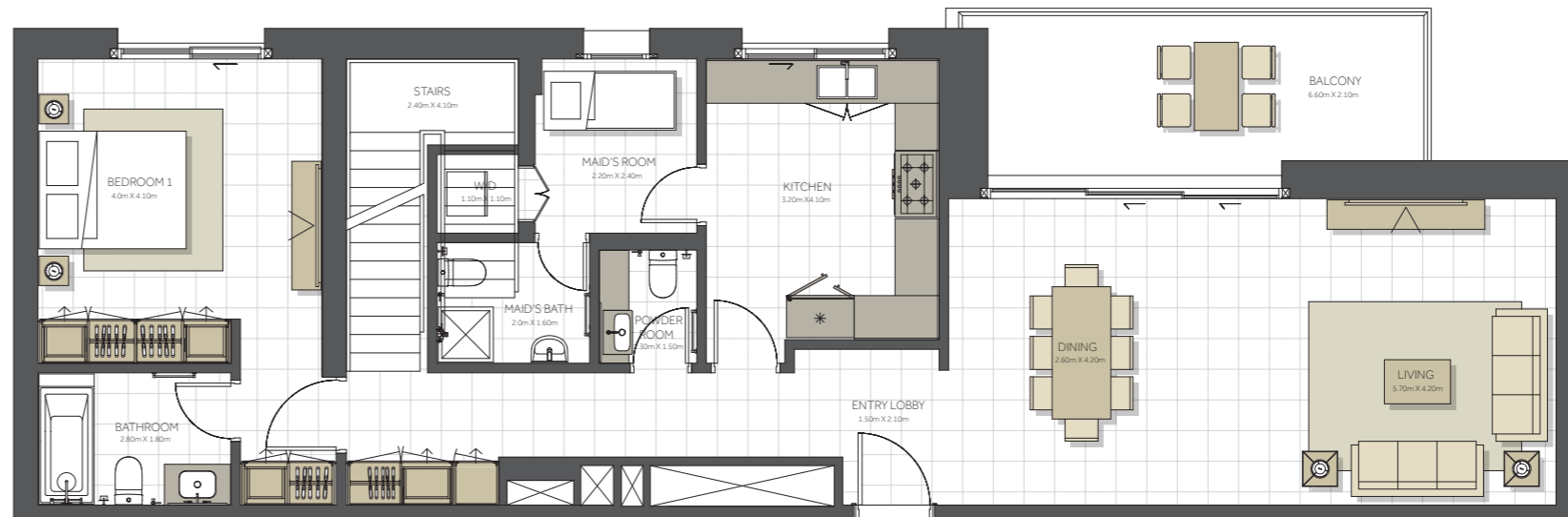
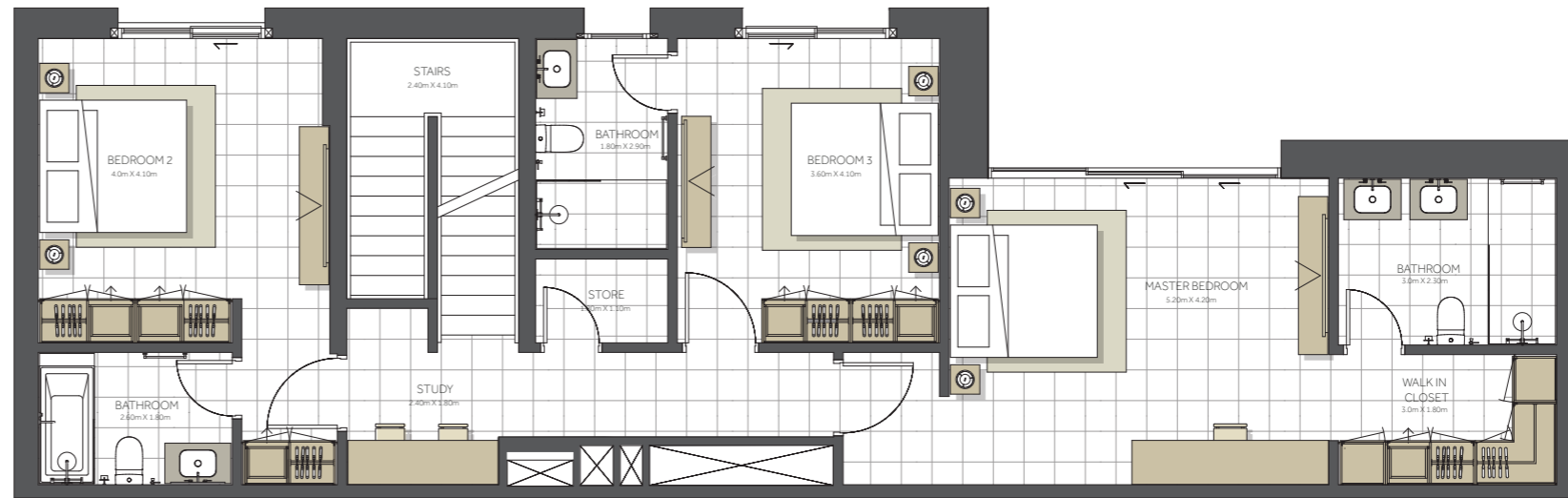
**Disclaimer:**

1. All room dimensions are measured to structural elements and exclude all finishes and construction tolerances. 2. All dimensions have been provided by our consultant architects. 3. All materials, dimensions and drawings are approximate. Information is subject to change without notice. 4. Actual suite area may vary from the stated area. Drawings not to scale. The developer reserves the right to make revisions. 5. Calculation of suite area is measured as the area bounded by the centre line of the demising or partition walls separating one unit from another unit, the exterior face of all exterior walls, and the exterior face of the corridor wall enclosing the adjoining unit. 6. Calculation of balcony area is measured as the area bounded by the centre line of the demising or partition walls separating one unit from another unit, the outmost face of the enclosing guard and the external face of the unit adjoining the balcony. 7. The units are measured at typical floor in the building. Columns may vary in size depending on the floor level.



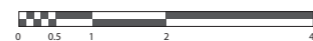
# TOPAZ RESIDENCES

|                      |                                        |
|----------------------|----------------------------------------|
| <b>BUILDING</b>      | <b>TOPAZ - 4BR</b>                     |
| <b>4 BEDROOM</b>     | <b>TYPE D Duplex</b>                   |
| <b>UNIT NO.</b>      | <b>1209</b>                            |
| <b>SUITE AREA.</b>   | <b>241 m<sup>2</sup> (2.594 sq.ft)</b> |
| <b>BALCONY AREA.</b> | <b>14 m<sup>2</sup> (151 sq.ft)</b>    |
| <b>TOTAL AREA</b>    | <b>255m<sup>2</sup> (2.745 sq.ft)</b>  |



Level 12

Level 13



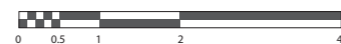
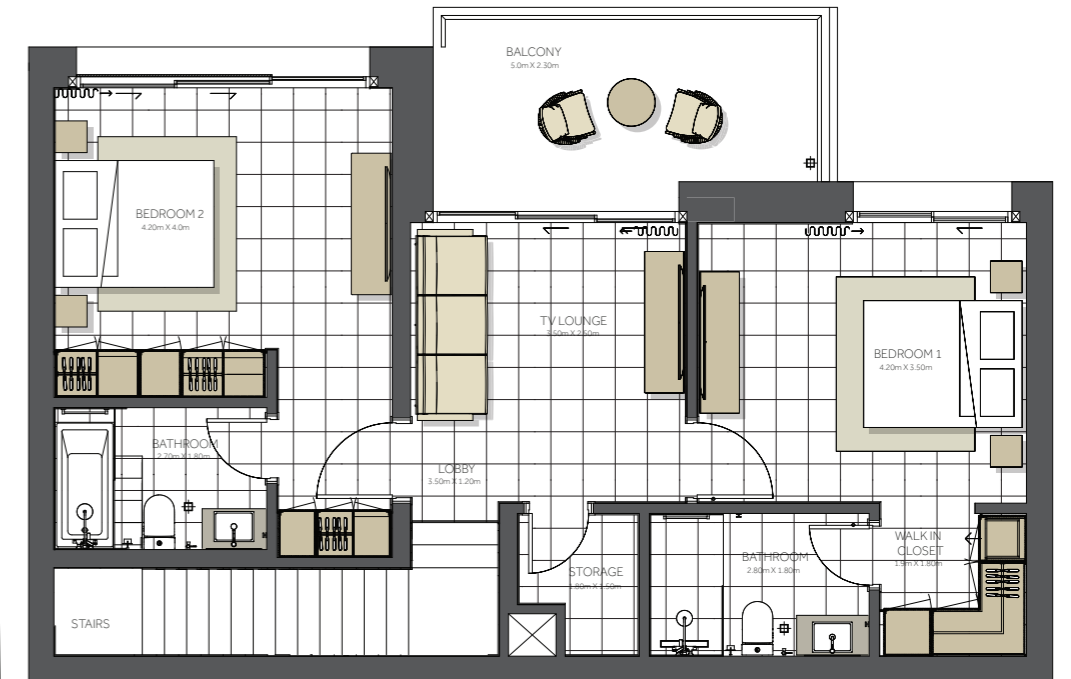
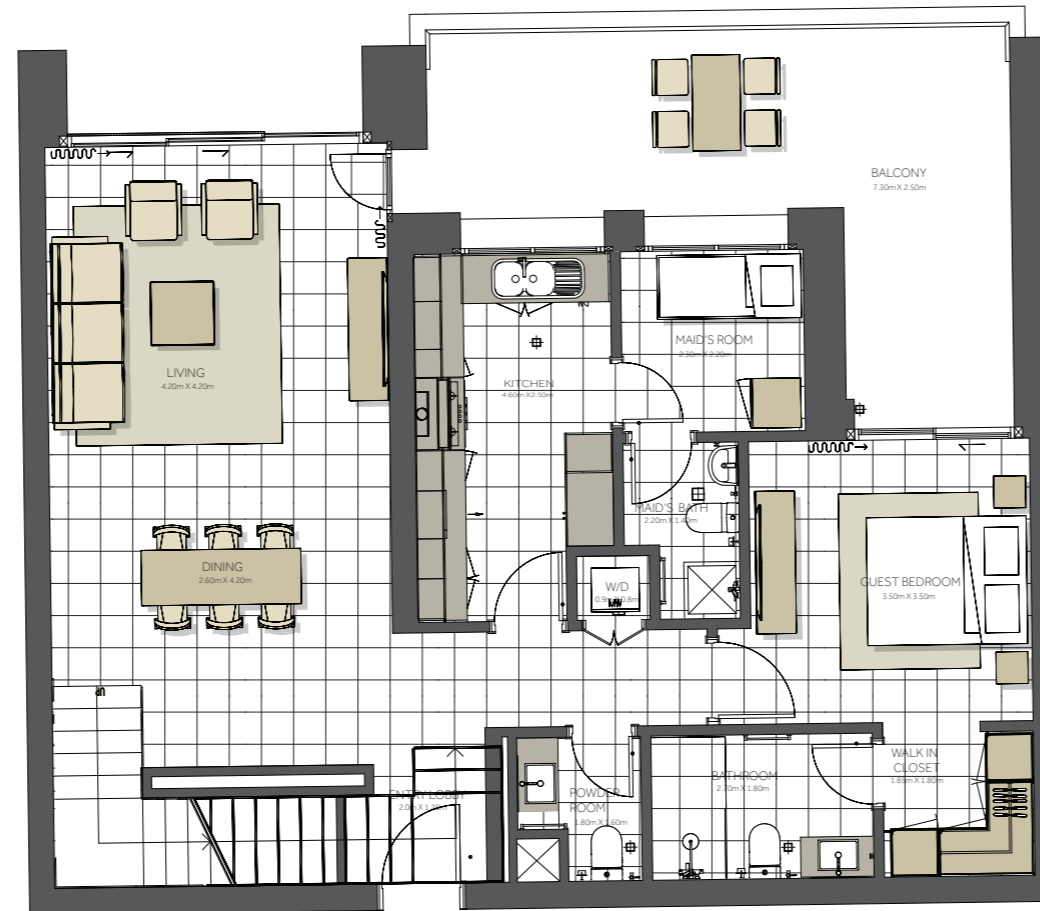
**Disclaimer:**

1. All room dimensions are measured to structural elements and exclude all finishes and construction tolerances. 2. All dimensions have been provided by our consultant architects. 3. All materials, dimensions and drawings are approximate. Information is subject to change without notice. 4. Actual suite area may vary from the stated area. Drawings not to scale. The developer reserves the right to make revisions. 5. Calculation of suite area is measured as the area bounded by the centre line of the demising or partition walls separating one unit from another unit, the exterior face of all exterior walls, and the exterior face of the corridor wall enclosing the adjoining unit. 6. Calculation of balcony area is measured as the area bounded by the centre line of the demising or partition walls separating one unit from another unit, the outmost face of the enclosing guard and the external face of the unit adjoining the balcony. 7. The units are measured at typical floor in the building. Columns may vary in size depending on the floor level.



# TOPAZ RESIDENCES

|                      |                                        |
|----------------------|----------------------------------------|
| <b>BUILDING</b>      | <b>PODIUM</b>                          |
| <b>3 BEDROOM</b>     | <b>TOWNHOUSE</b>                       |
| <b>UNIT NO.</b>      | <b>007,008,009</b>                     |
| <b>SUITE AREA.</b>   | <b>190m<sup>2</sup> (2.045 sq.ft)</b>  |
| <b>BALCONY AREA.</b> | <b>37 m<sup>2</sup> (398 sq.ft)</b>    |
| <b>TOTAL AREA</b>    | <b>227 m<sup>2</sup> (2.443 sq.ft)</b> |



PODIUM 2

PODIUM 1



جزيرة مريم  
MARYAM ISLAND  
SHARJAH

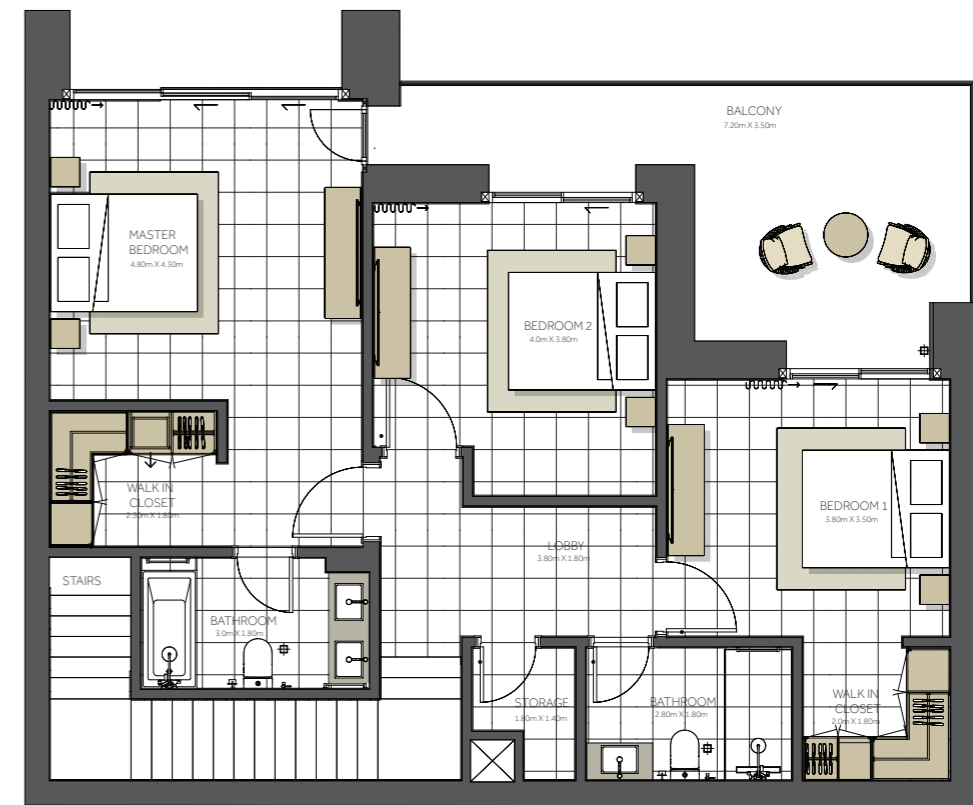
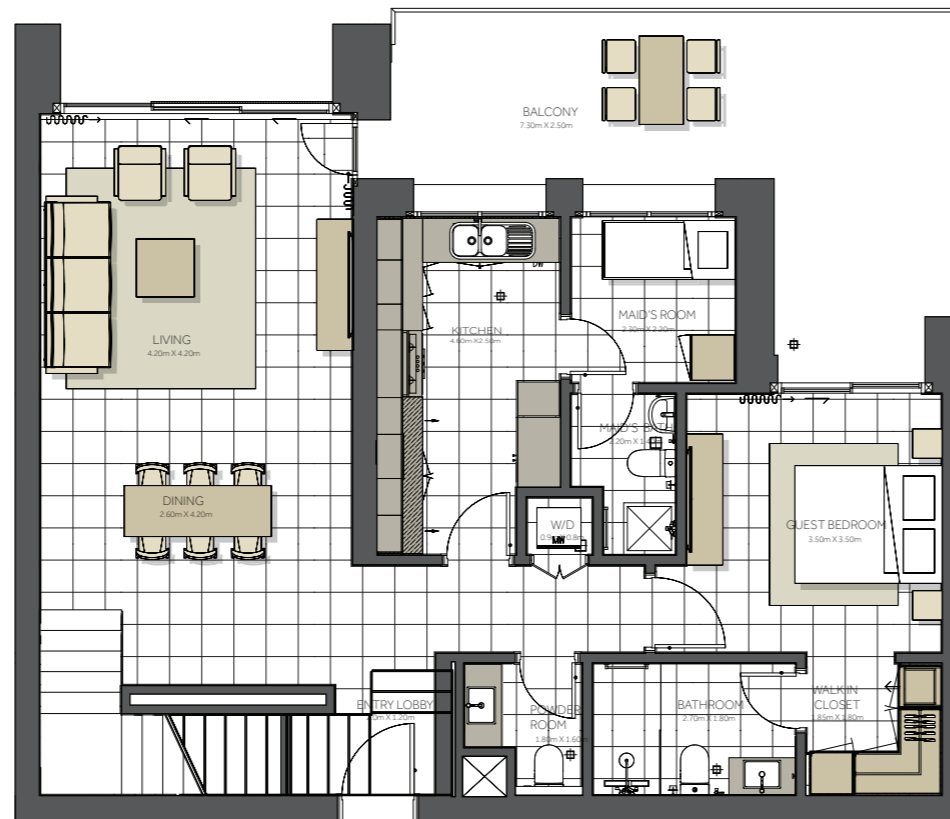
**Disclaimer:**

1. All room dimensions are measured to structural elements and exclude all finishes and construction tolerances. 2. All dimensions have been provided by our consultant architects. 3. All materials, dimensions and drawings are approximate. Information is subject to change without notice. 4. Actual suite area may vary from the stated area. Drawings not to scale. The developer reserves the right to make revisions. 5. Calculation of suite area is measured as the area bounded by the centre line of the demising or partition walls separating one unit from another unit, the exterior face of all exterior walls, and the exterior face of the corridor wall enclosing the adjoining unit. 6. Calculation of balcony area is measured as the area bounded by the centre line of the demising or partition walls separating one unit from another unit, the outmost face of the enclosing guard and the external face of the unit adjoining the balcony. 7. The units are measured at typical floor in the building. Columns may vary in size depending on the floor level.



# TOPAZ RESIDENCES

|                      |                                        |
|----------------------|----------------------------------------|
| <b>BUILDING</b>      | <b>PODIUM</b>                          |
| <b>4 BEDROOM</b>     | <b>TOWNHOUSE</b>                       |
| <b>UNIT NO.</b>      | <b>006,010</b>                         |
| <b>SUITE AREA.</b>   | <b>214m<sup>2</sup> (2.303 sq.ft)</b>  |
| <b>BALCONY AREA.</b> | <b>45 m<sup>2</sup> (484 sq.ft)</b>    |
| <b>TOTAL AREA</b>    | <b>259 m<sup>2</sup> (2.789 sq.ft)</b> |



PODIUM 2

PODIUM 1



EAGLE HILLS  
ABU DHABI



جزيرة مريم  
MARYAM ISLAND  
SHARJAH

### Disclaimer:

1. All room dimensions are measured to structural elements and exclude all finishes and construction tolerances. 2. All dimensions have been provided by our consultant architects. 3. All materials, dimensions and drawings are approximate. Information is subject to change without notice. 4. Actual suite area may vary from the stated area. Drawings not to scale. The developer reserves the right to make revisions. 5. Calculation of suite area is measured as the area bounded by the centre line of the demising or partition walls separating one unit from another unit, the exterior face of all exterior walls, and the exterior face of the corridor wall enclosing the adjoining unit. 6. Calculation of balcony area is measured as the area bounded by the centre line of the demising or partition walls separating one unit from another unit, the outmost face of the enclosing guard and the external face of the unit adjoining the balcony. 7. The units are measured at typical floor in the building. Columns may vary in size depending on the floor level.