

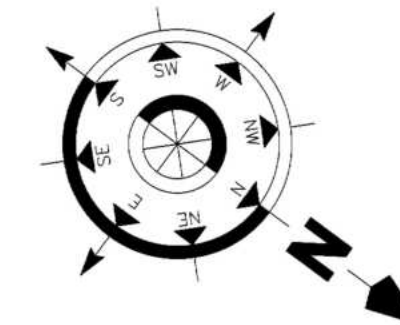


ARLINGTON
PARK

MAJID

ARLINGTON PARK

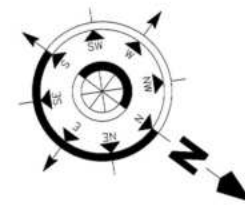
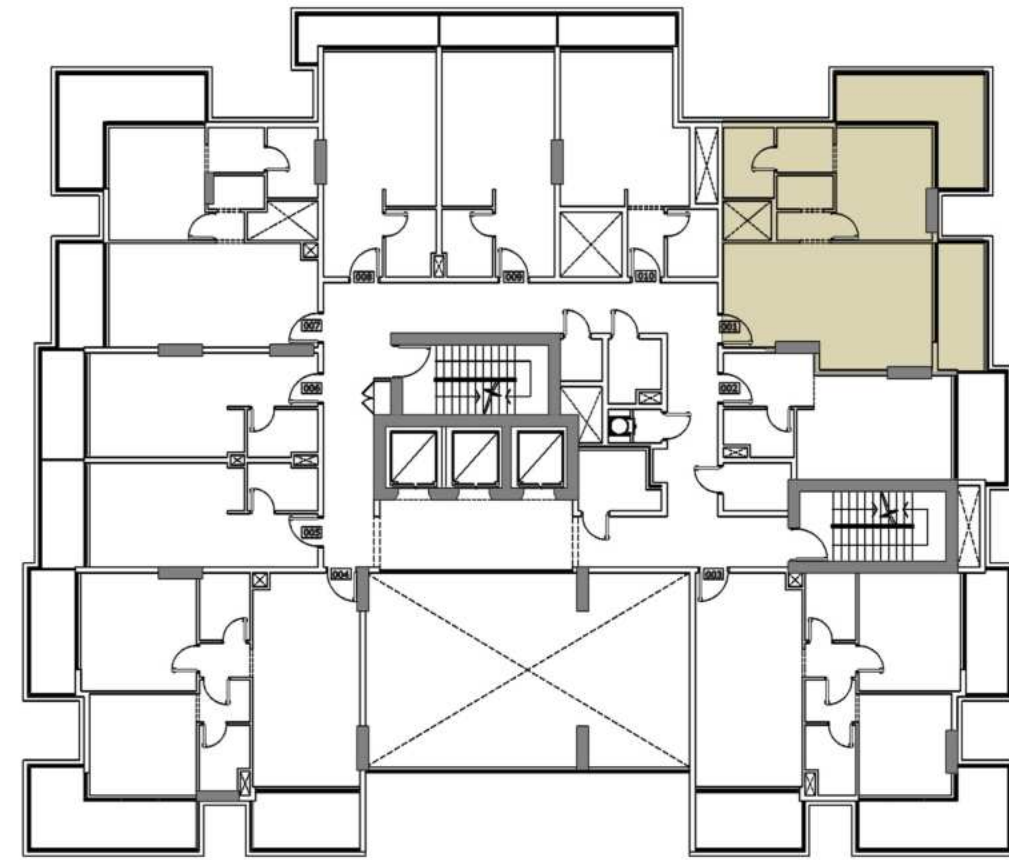
NEIGHBOUR 50.00M



FIRST FLOOR PLAN

Disclaimer: all pictures, plans, layouts, information, data and details included in this brochure are indicative only and may change at any time up to the final 'as built' status in accordance with the final designs of the project, regulatory approvals and planning permissions.

ARLINGTON PARK



1st FLOOR 1 BEDROOM APARTMENT

UNIT AREA 660 Sq. ft.

TERR/BAL AREA 241 Sq. ft.

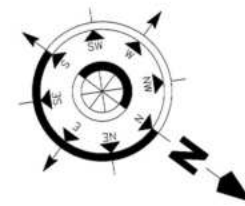
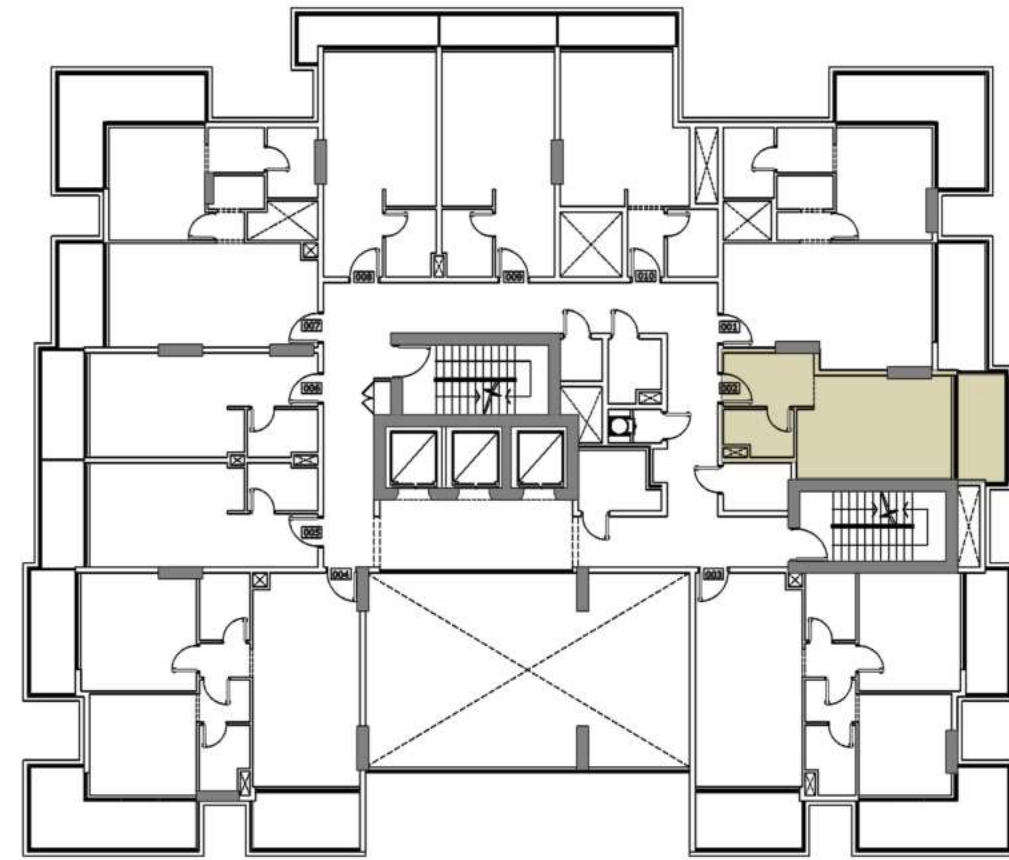
TOTAL AREA 901 Sq. ft.

UNITS 101

Disclaimer: all pictures, plans, layouts, information, data and details included in this brochure are indicative only and may change at any time up to the final 'as built' status in accordance with the final designs of the project, regulatory approvals and planning permissions.



ARLINGTON PARK



1st FLOOR STUDIO APARTMENT



UNIT AREA 356 Sq. ft.

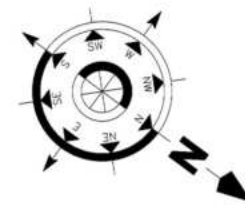
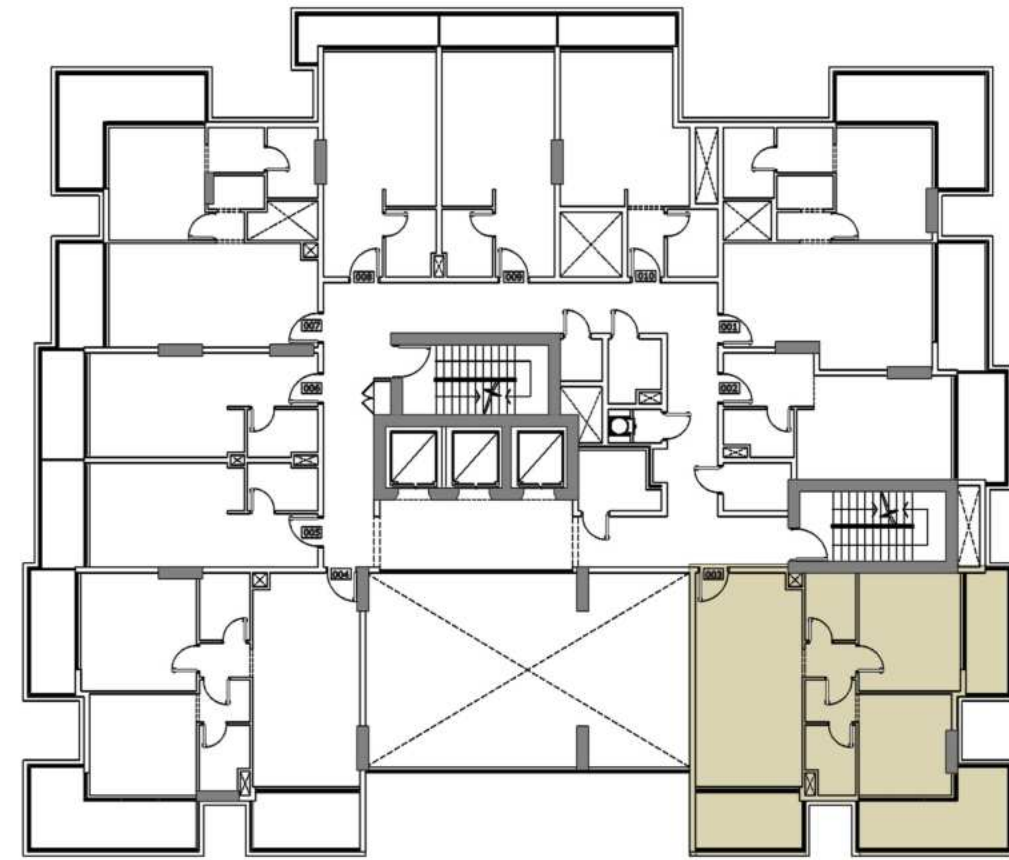
TERR/BAL AREA 77 Sq. ft.

TOTAL AREA 433 Sq. ft.

UNITS 102

Disclaimer: all pictures, plans, layouts, information, data and details included in this brochure are indicative only and may change at any time up to the final 'as built' status in accordance with the final designs of the project, regulatory approvals and planning permissions.

ARLINGTON PARK



1st FLOOR 2 BEDROOM APARTMENT

UNIT AREA 809 Sq. ft.

TERR/BAL AREA 296 Sq. ft.

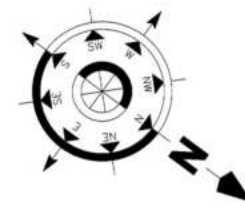
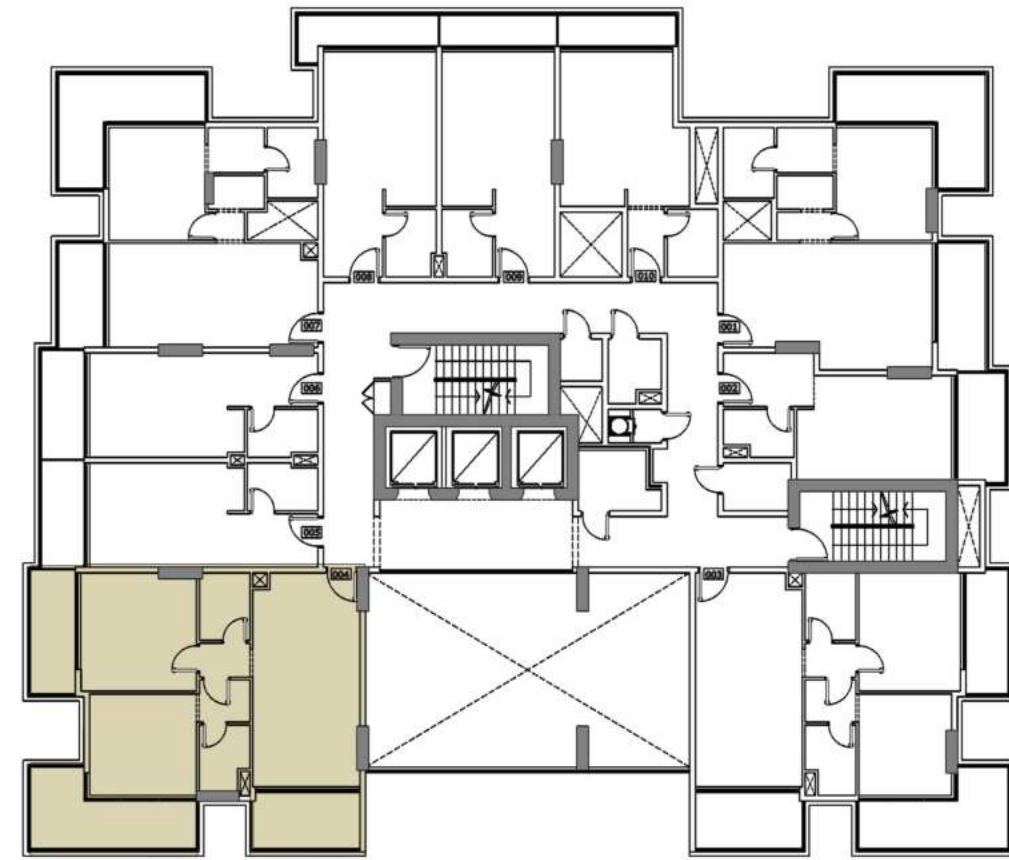
TOTAL AREA 1105 Sq. ft.

UNITS 103



Disclaimer: all pictures, plans, layouts, information, data and details included in this brochure are indicative only and may change at any time up to the final 'as built' status in accordance with the final designs of the project, regulatory approvals and planning permissions.

ARLINGTON PARK



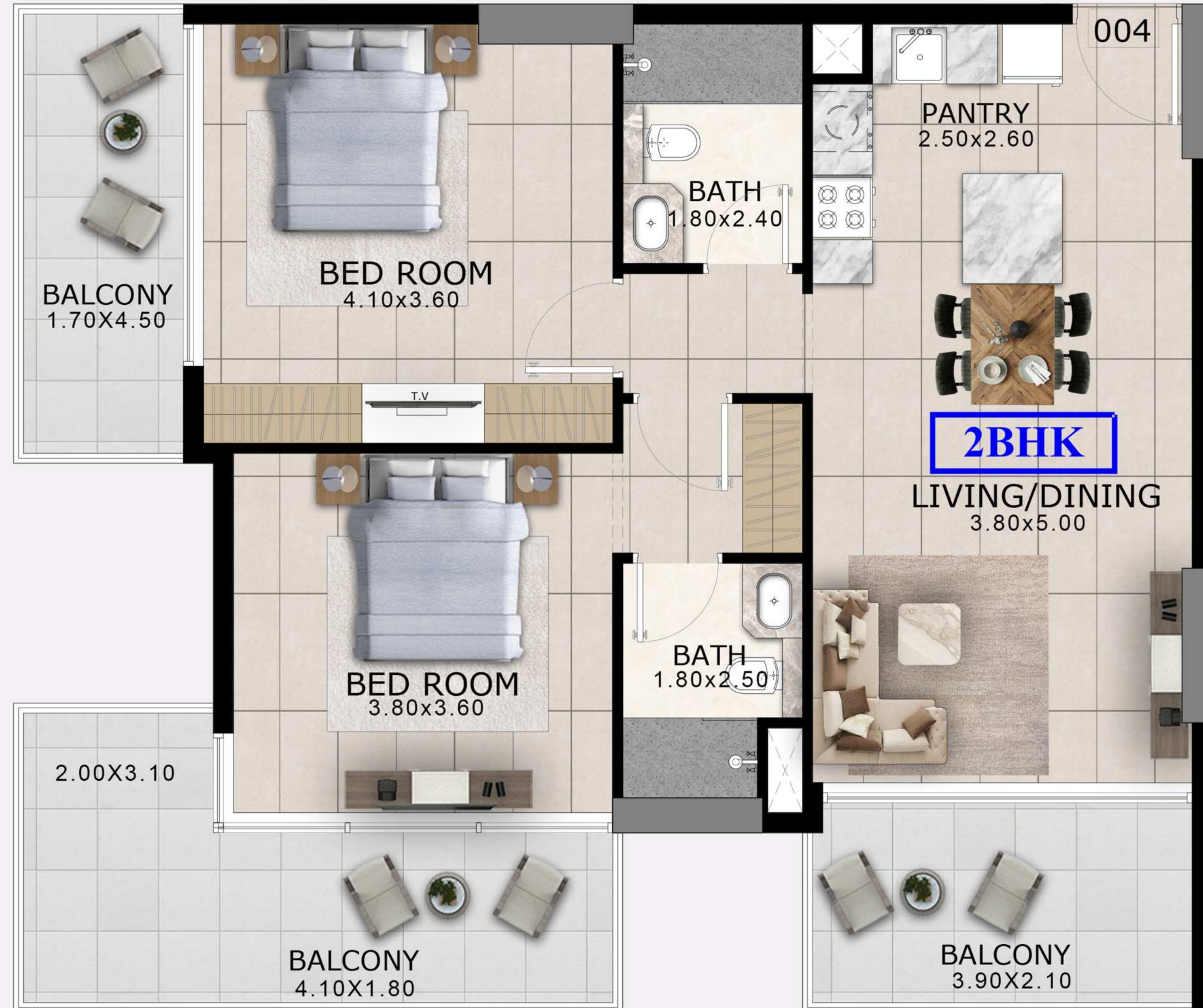
1st FLOOR 2 BEDROOM APARTMENT

UNIT AREA 847 Sq. ft.

TERR/BAL AREA 314 Sq. ft.

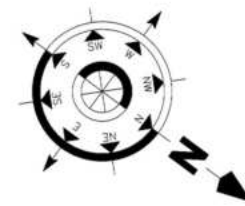
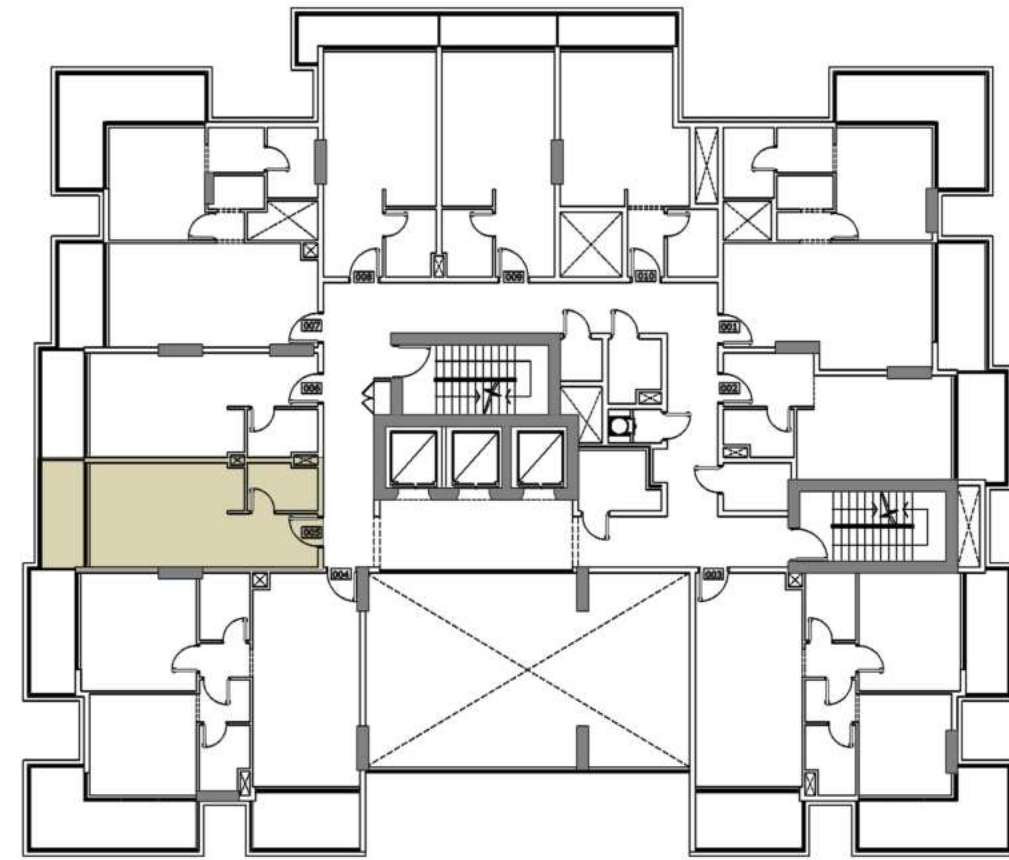
TOTAL AREA 1161 Sq. ft.

UNITS 104



Disclaimer: all pictures, plans, layouts, information, data and details included in this brochure are indicative only and may change at any time up to the final 'as built' status in accordance with the final designs of the project, regulatory approvals and planning permissions.

ARLINGTON PARK



1st FLOOR STUDIO APARTMENT



UNIT AREA 345 Sq. ft.

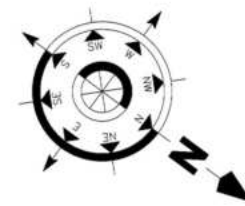
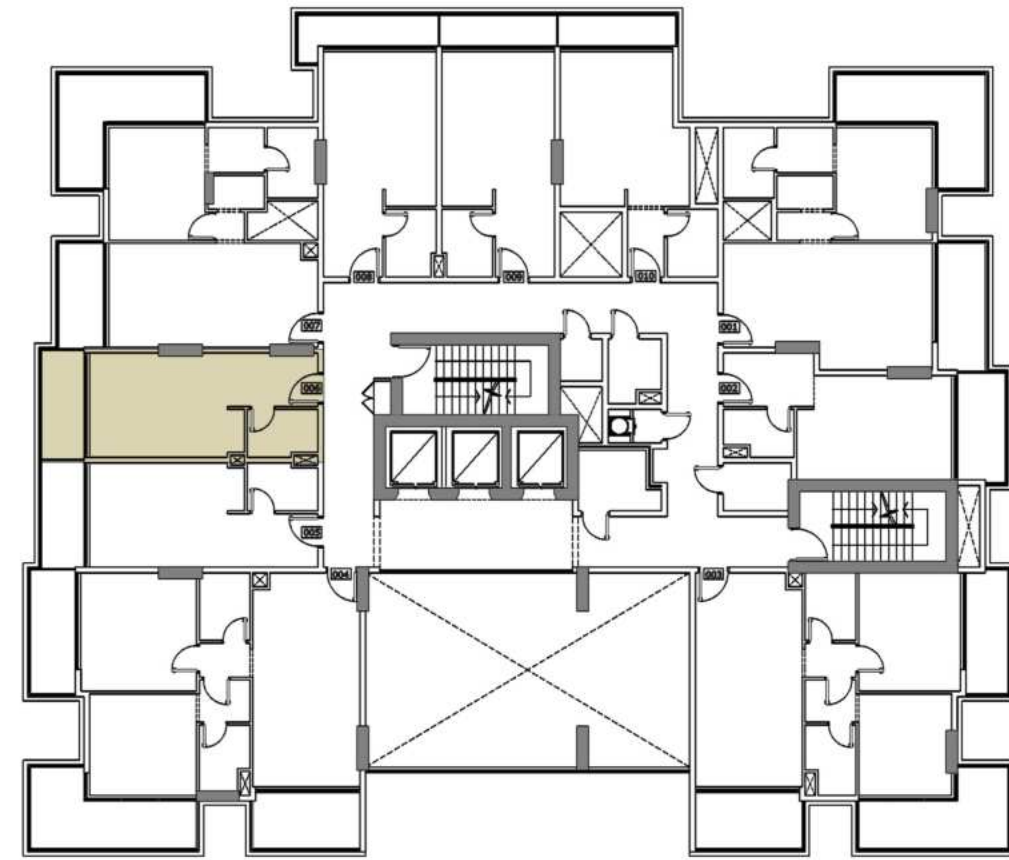
TERR/BAL AREA 68 Sq. ft.

TOTAL AREA 413 Sq. ft.

UNITS 105

Disclaimer: all pictures, plans, layouts, information, data and details included in this brochure are indicative only and may change at any time up to the final 'as built' status in accordance with the final designs of the project, regulatory approvals and planning permissions.

ARLINGTON PARK



1st FLOOR STUDIO APARTMENT



UNIT AREA 345 Sq. ft.

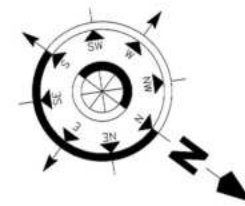
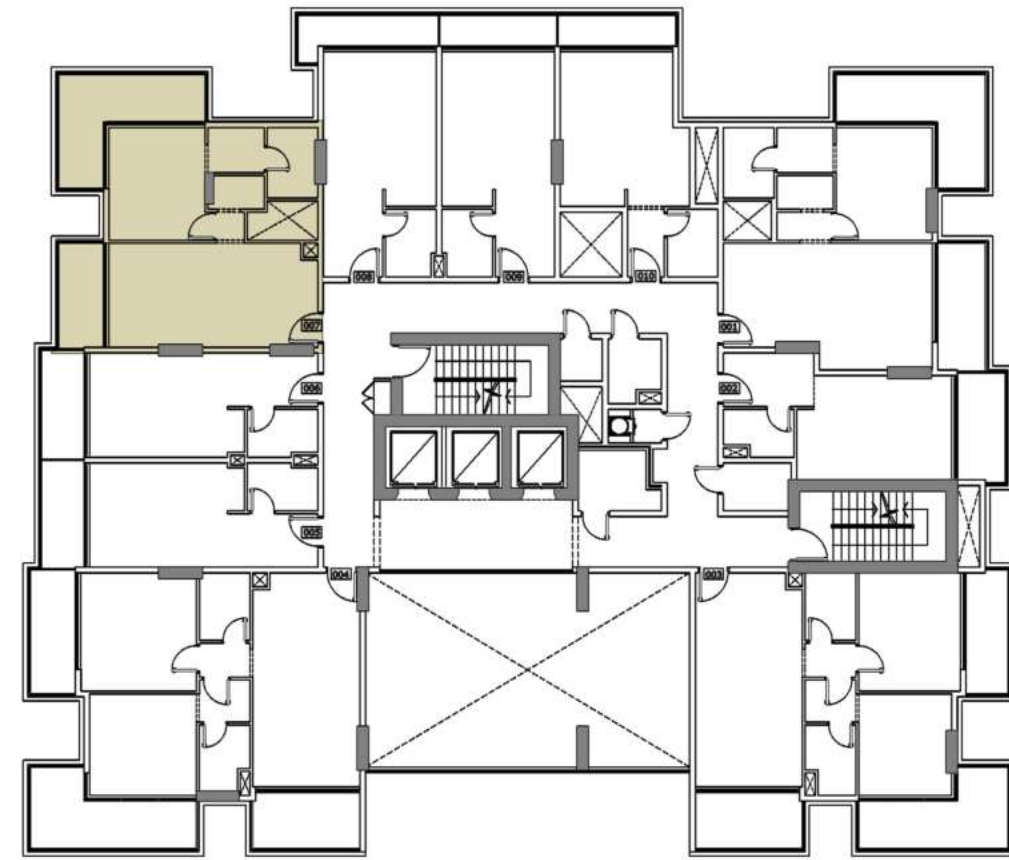
TERR/BAL AREA 68 Sq. ft.

TOTAL AREA 413 Sq. ft.

UNITS 106

Disclaimer: all pictures, plans, layouts, information, data and details included in this brochure are indicative only and may change at any time up to the final 'as built' status in accordance with the final designs of the project, regulatory approvals and planning permissions.

ARLINGTON PARK



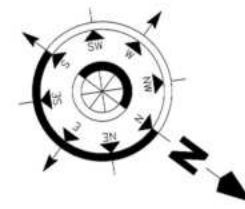
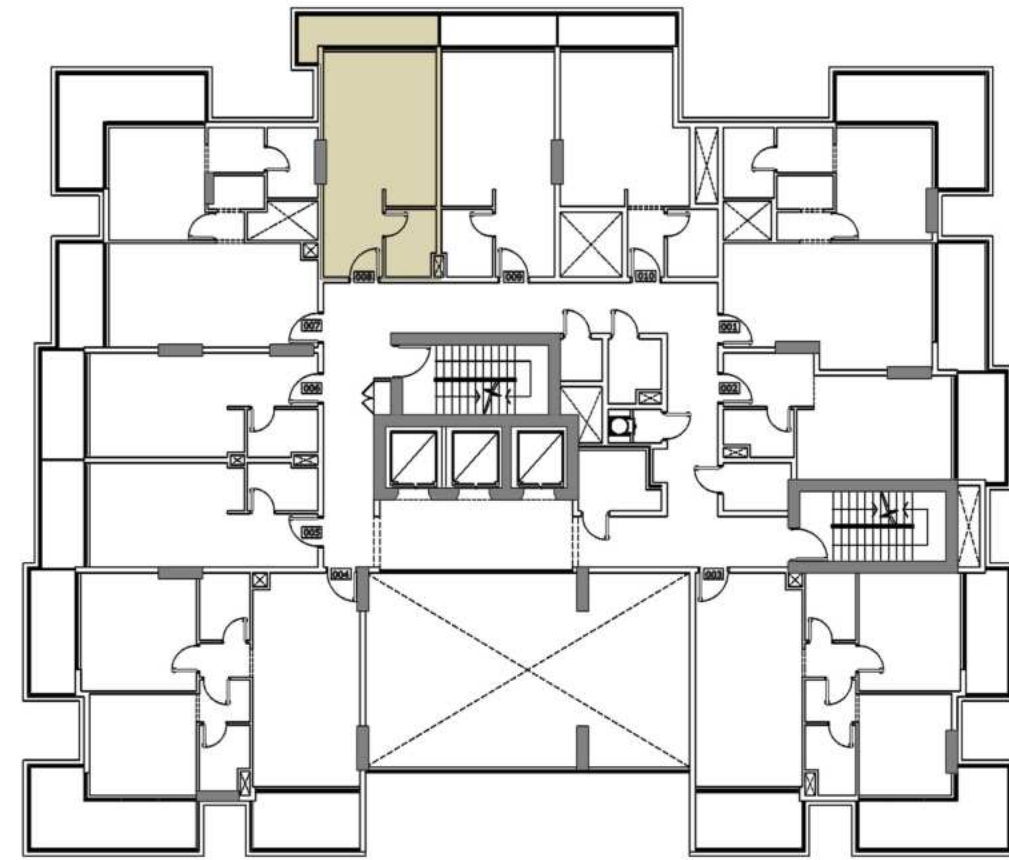
1st FLOOR 1 BEDROOM APARTMENT

UNIT AREA	610 Sq. ft.
TERR/BAL AREA	216 Sq. ft.
TOTAL AREA	826 Sq. ft.
UNITS	107

Disclaimer: all pictures, plans, layouts, information, data and details included in this brochure are indicative only and may change at any time up to the final 'as built' status in accordance with the final designs of the project, regulatory approvals and planning permissions.



ARLINGTON PARK



1st FLOOR STUDIO APARTMENT

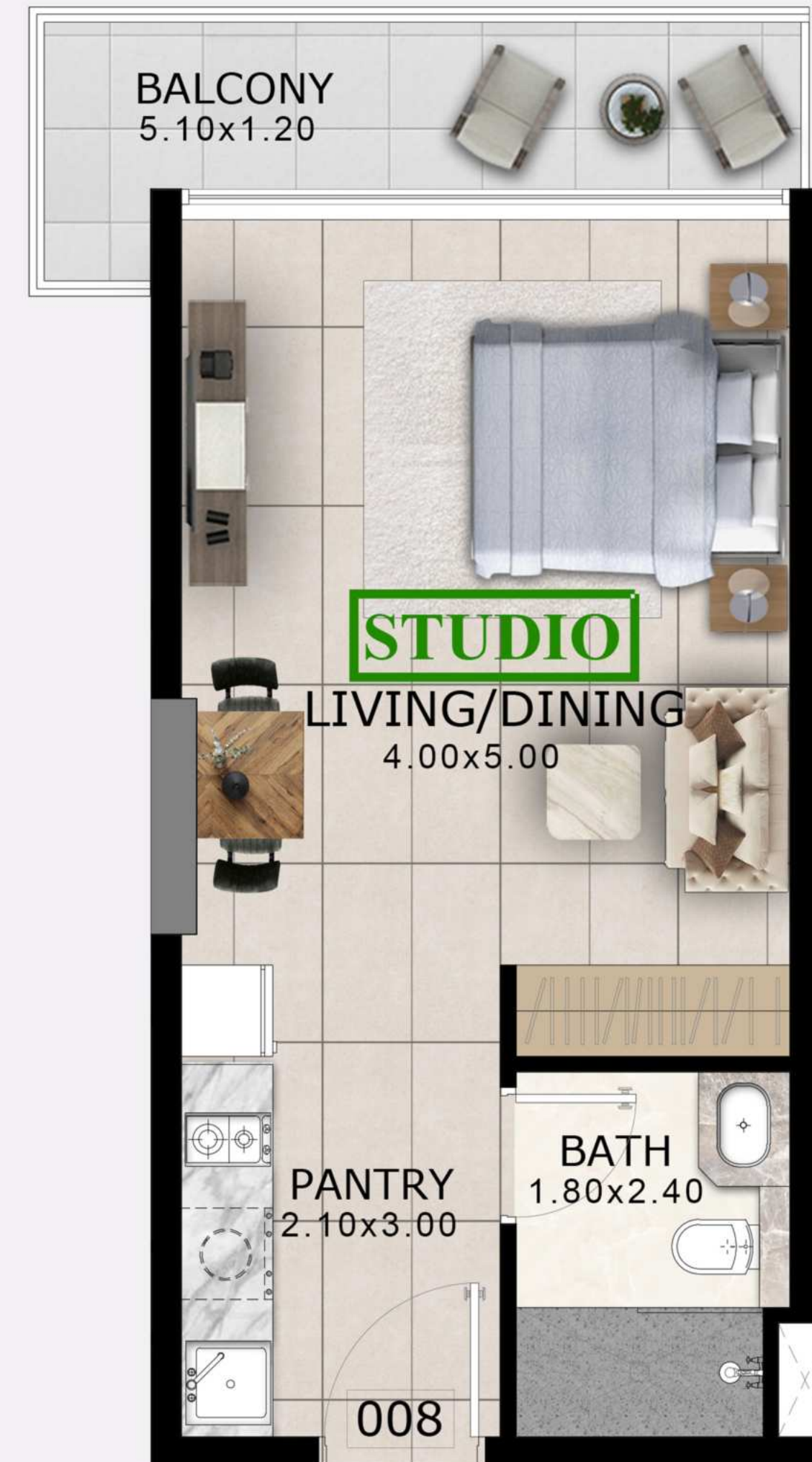
UNIT AREA 369 Sq. ft.

TERR/BAL AREA 71 Sq. ft.

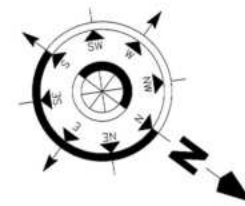
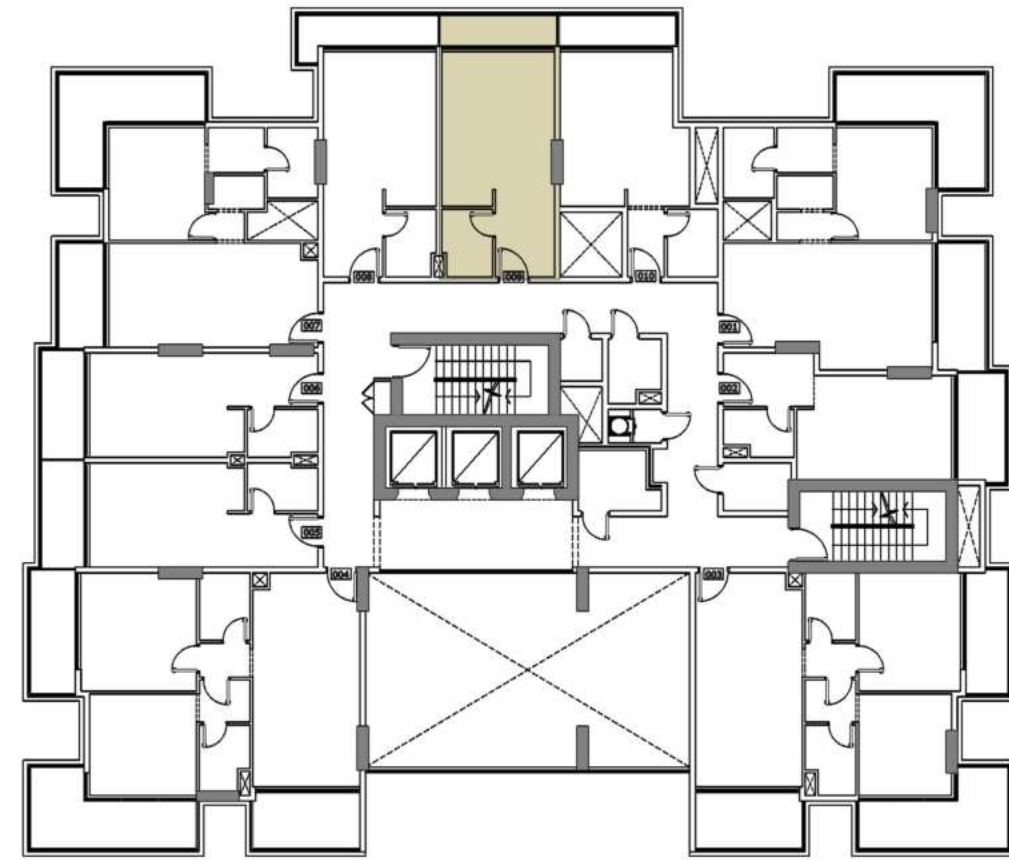
TOTAL AREA 440 Sq. ft.

UNITS 108

Disclaimer: all pictures, plans, layouts, information, data and details included in this brochure are indicative only and may change at any time up to the final 'as built' status in accordance with the final designs of the project, regulatory approvals and planning permissions.



ARLINGTON PARK



1st FLOOR STUDIO APARTMENT

UNIT AREA 369 Sq. ft.

TERR/BAL AREA 55 Sq. ft.

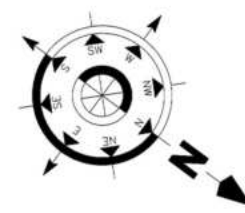
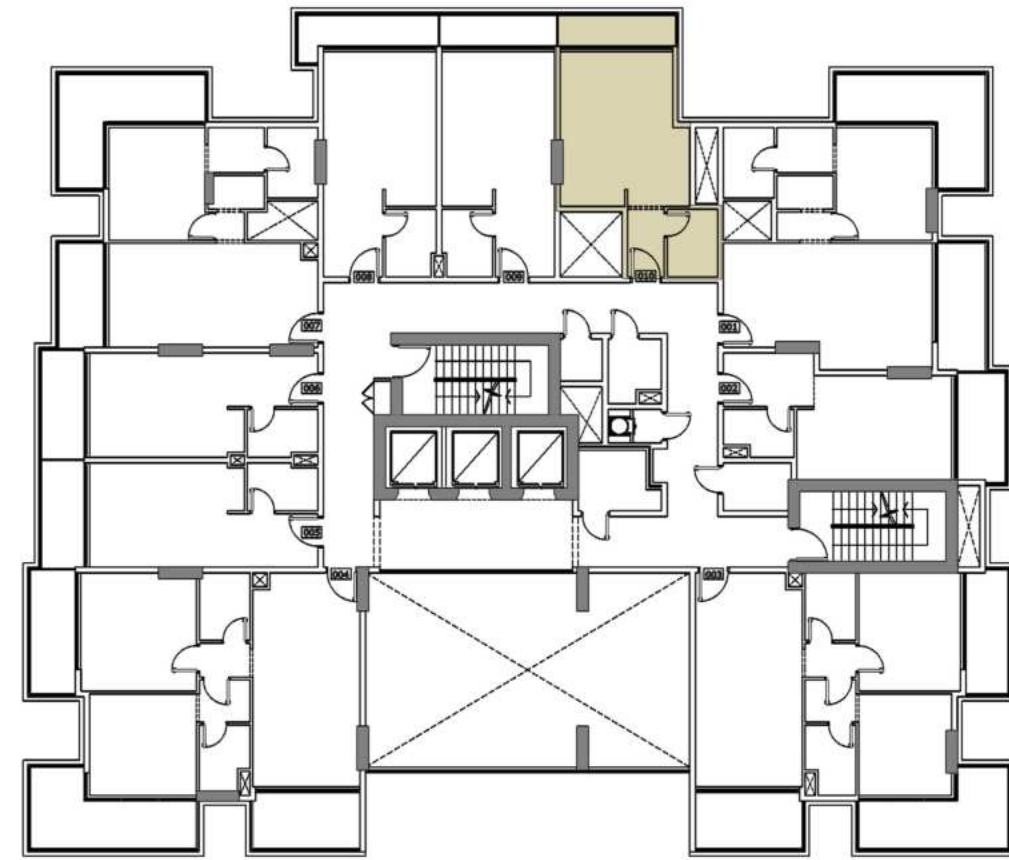
TOTAL AREA 424 Sq. ft.

UNITS 109

Disclaimer: all pictures, plans, layouts, information, data and details included in this brochure are indicative only and may change at any time up to the final 'as built' status in accordance with the final designs of the project, regulatory approvals and planning permissions.



ARLINGTON PARK



1st FLOOR STUDIO APARTMENT

UNIT AREA	370 Sq. ft.
TERR/BAL AREA	56 Sq. ft.
TOTAL AREA	426 Sq. ft.
UNITS	110

Disclaimer: all pictures, plans, layouts, information, data and details included in this brochure are indicative only and may change at any time up to the final 'as built' status in accordance with the final designs of the project, regulatory approvals and planning permissions.



ARLINGTON PARK

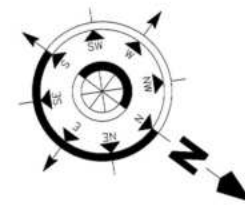
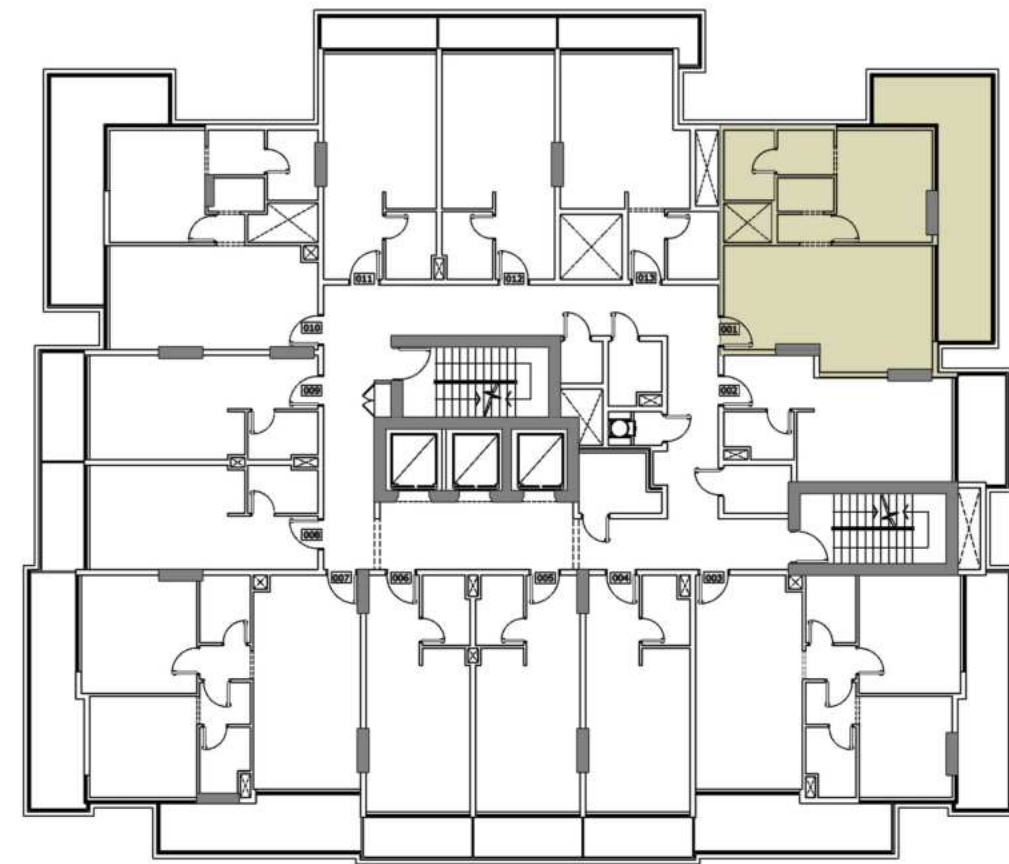
NEIGHBOUR 50.00M



TYPICAL FLOOR PLAN (2,4,6,8 & 10)

Disclaimer: all pictures, plans, layouts, information, data and details included in this brochure are indicative only and may change at any time up to the final 'as built' status in accordance with the final designs of the project, regulatory approvals and planning permissions.

ARLINGTON PARK



TYPICAL (2,4,6,8 & 10) FLOOR 1 BEDROOM APARTMENTS

UNIT AREA 660 Sq. ft.

TERR/BAL AREA 250 Sq. ft.

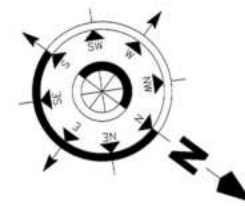
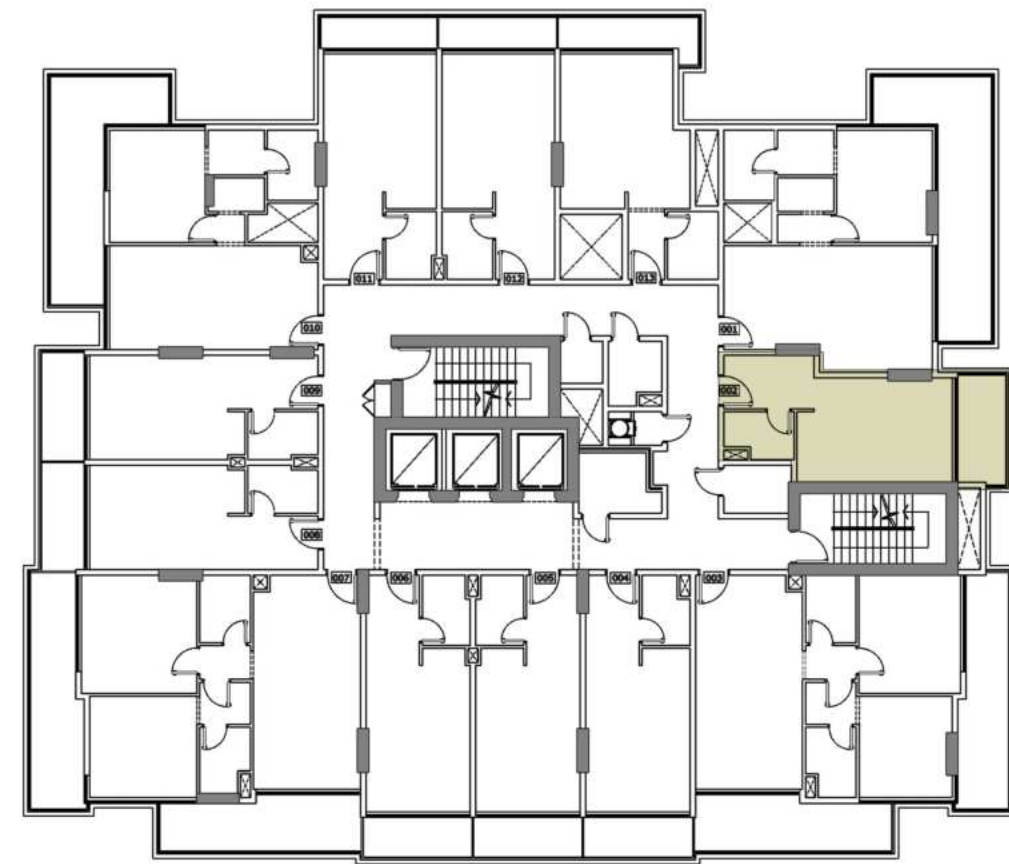
TOTAL AREA 910 Sq. ft.

UNITS 201,401,601,801 & 1001

Disclaimer: all pictures, plans, layouts, information, data and details included in this brochure are indicative only and may change at any time up to the final 'as built' status in accordance with the final designs of the project, regulatory approvals and planning permissions.



ARLINGTON PARK



TYPICAL (2,4,6,8 & 10) FLOOR STUDIO APARTMENTS



UNIT AREA 356 Sq. ft.

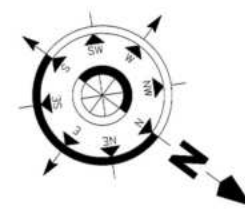
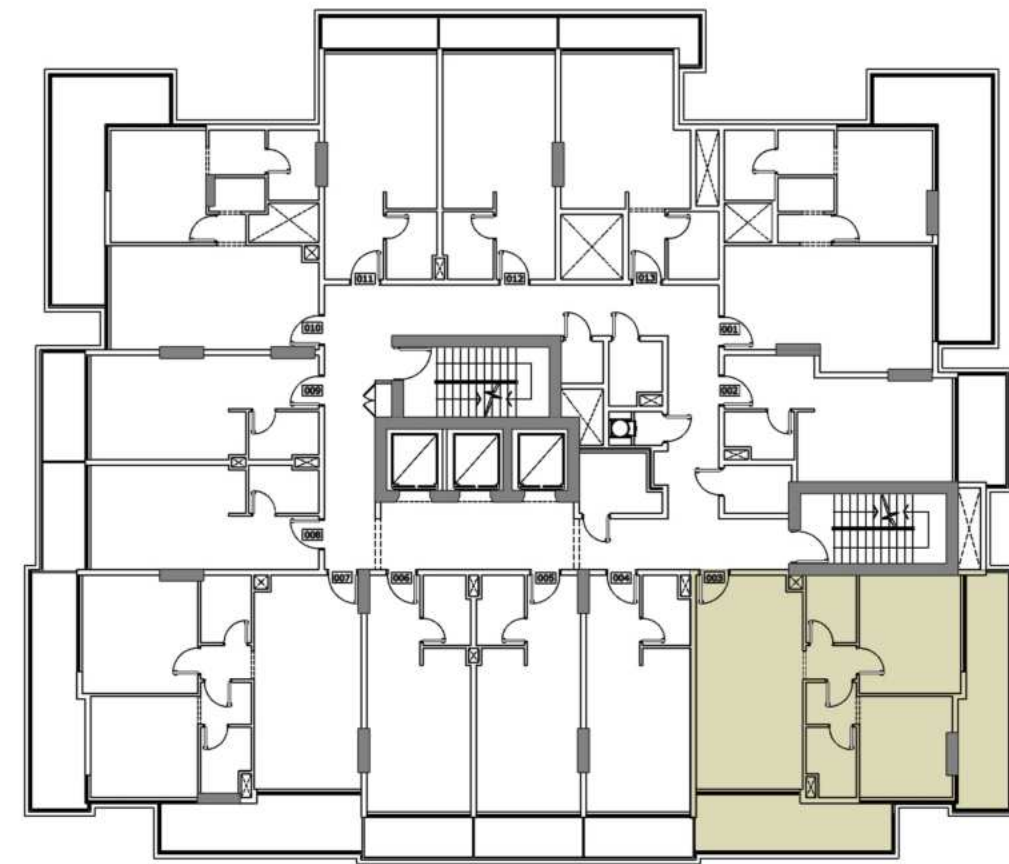
TERR/BAL AREA 77 Sq. ft.

TOTAL AREA 433 Sq. ft.

UNITS 202,402,602,802 & 1002

Disclaimer: all pictures, plans, layouts, information, data and details included in this brochure are indicative only and may change at any time up to the final 'as built' status in accordance with the final designs of the project, regulatory approvals and planning permissions.

ARLINGTON PARK



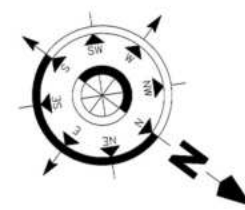
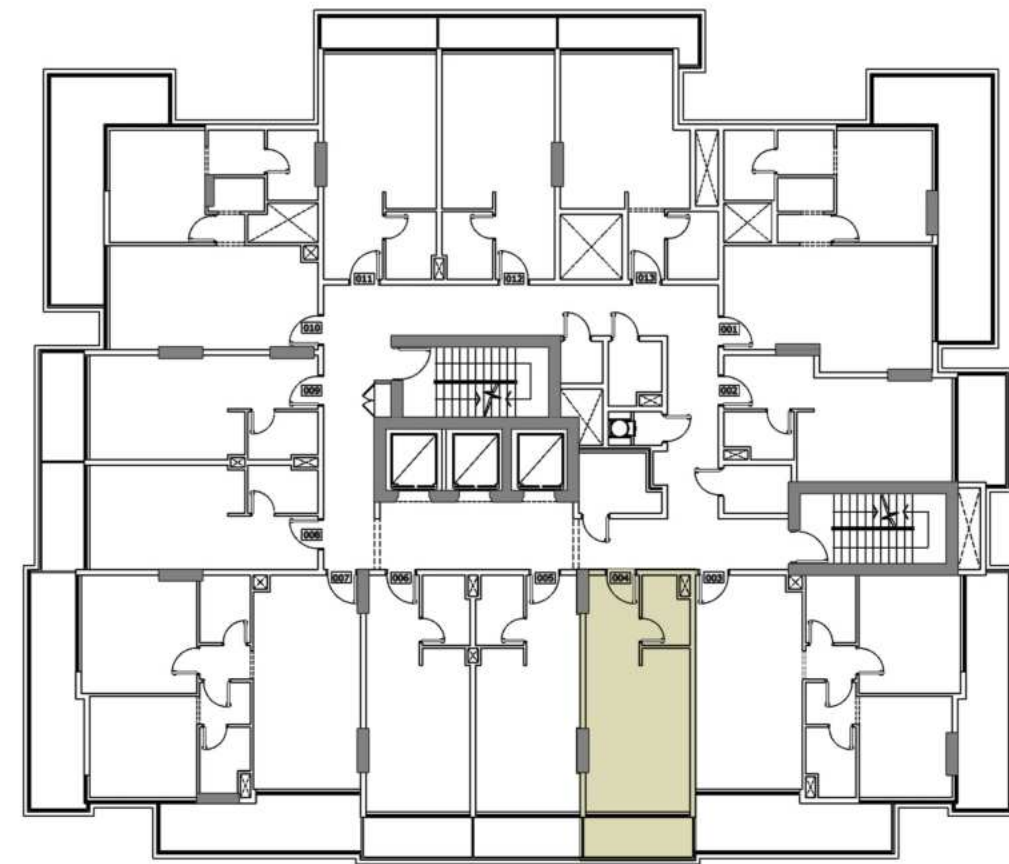
TYPICAL (2,4,6,8 & 10) FLOOR 2 BEDROOM APARTMENTS

UNIT AREA	809 Sq. ft.
TERR/BAL AREA	312 Sq. ft.
TOTAL AREA	1121 Sq. ft.
UNITS	203,403,603,803 & 1003

Disclaimer: all pictures, plans, layouts, information, data and details included in this brochure are indicative only and may change at any time up to the final 'as built' status in accordance with the final designs of the project, regulatory approvals and planning permissions.



ARLINGTON PARK



TYPICAL (2,4,6,8 & 10) FLOOR STUDIO APARTMENTS

UNIT AREA 356 Sq. ft.

TERR/BAL AREA 64 Sq. ft.

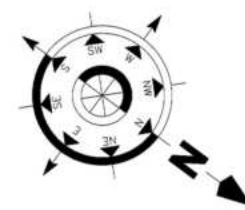
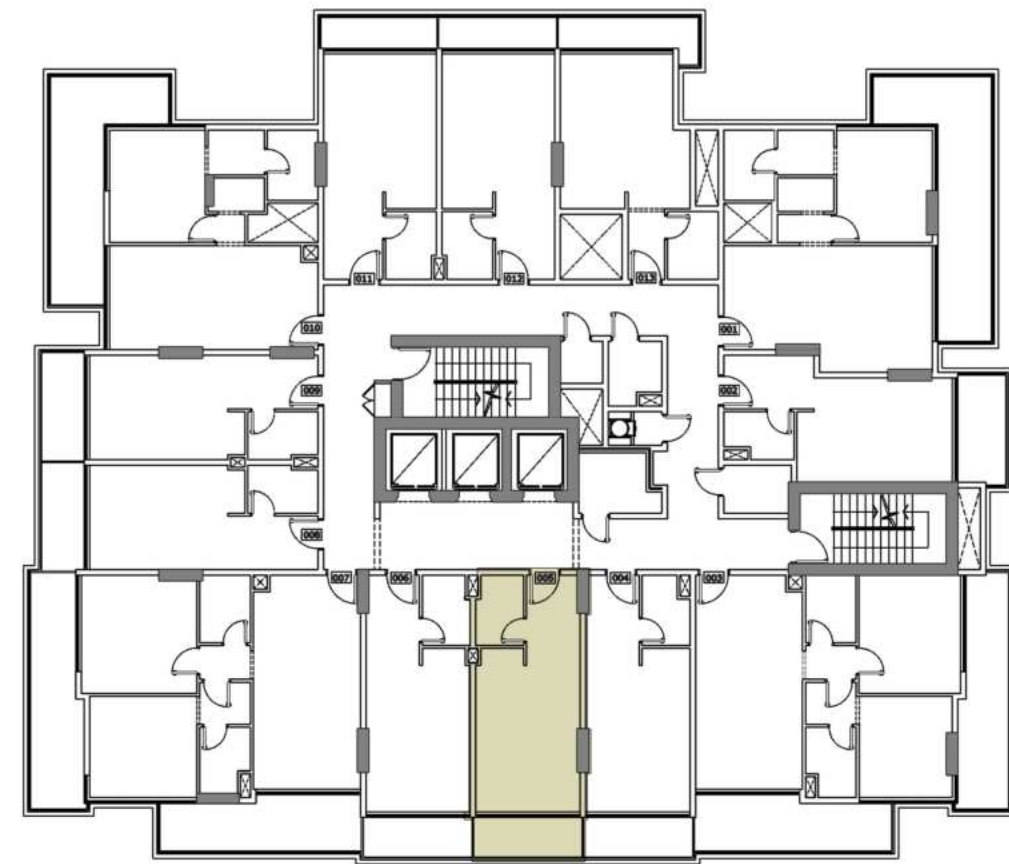
TOTAL AREA 420 Sq. ft.

UNITS 204,404,604,804 & 1004

Disclaimer: all pictures, plans, layouts, information, data and details included in this brochure are indicative only and may change at any time up to the final 'as built' status in accordance with the final designs of the project, regulatory approvals and planning permissions.



ARLINGTON PARK



TYPICAL (2,4,6,8 & 10) FLOOR STUDIO APARTMENTS

UNIT AREA 357 Sq. ft.

TERR/BAL AREA 64 Sq. ft.

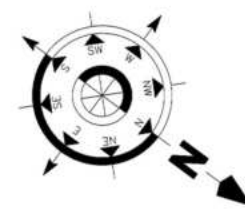
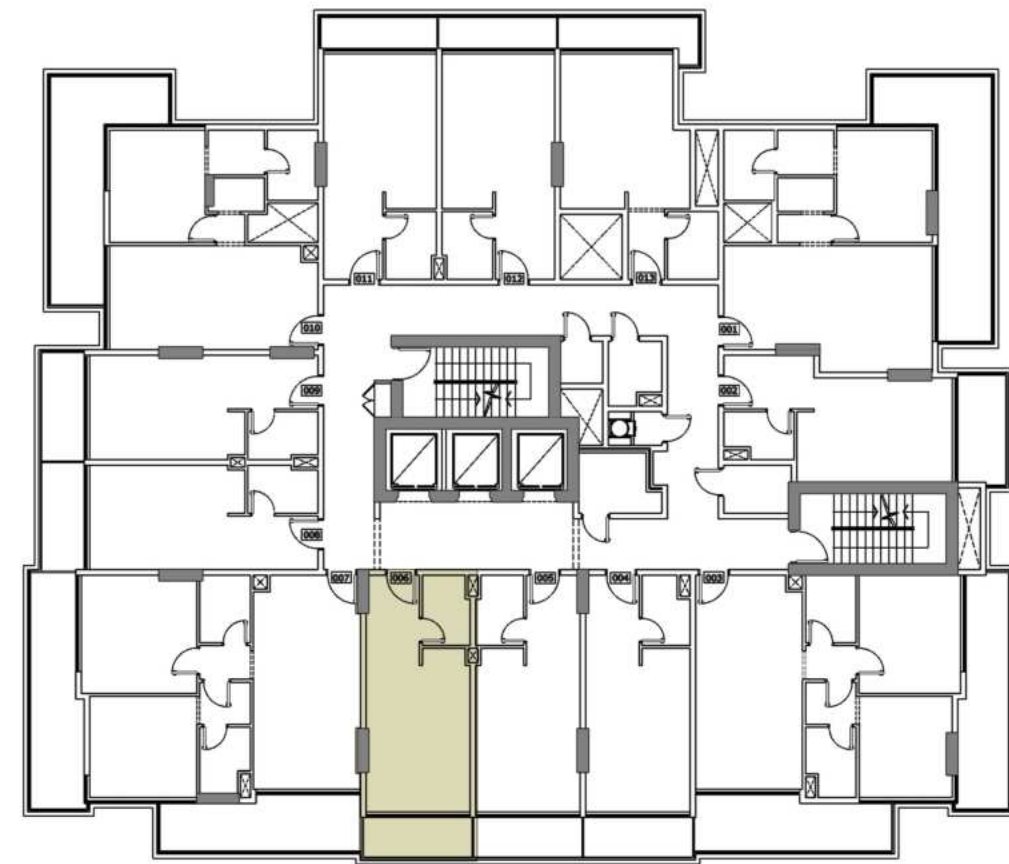
TOTAL AREA 421 Sq. ft.

UNITS 205,405,605,805 & 1005

Disclaimer: all pictures, plans, layouts, information, data and details included in this brochure are indicative only and may change at any time up to the final 'as built' status in accordance with the final designs of the project, regulatory approvals and planning permissions.



ARLINGTON PARK



TYPICAL (2,4,6,8 & 10) FLOOR STUDIO APARTMENTS

UNIT AREA 357 Sq. ft.

TERR/BAL AREA 64 Sq. ft.

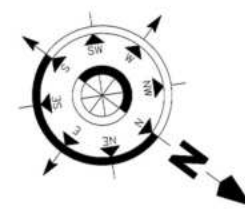
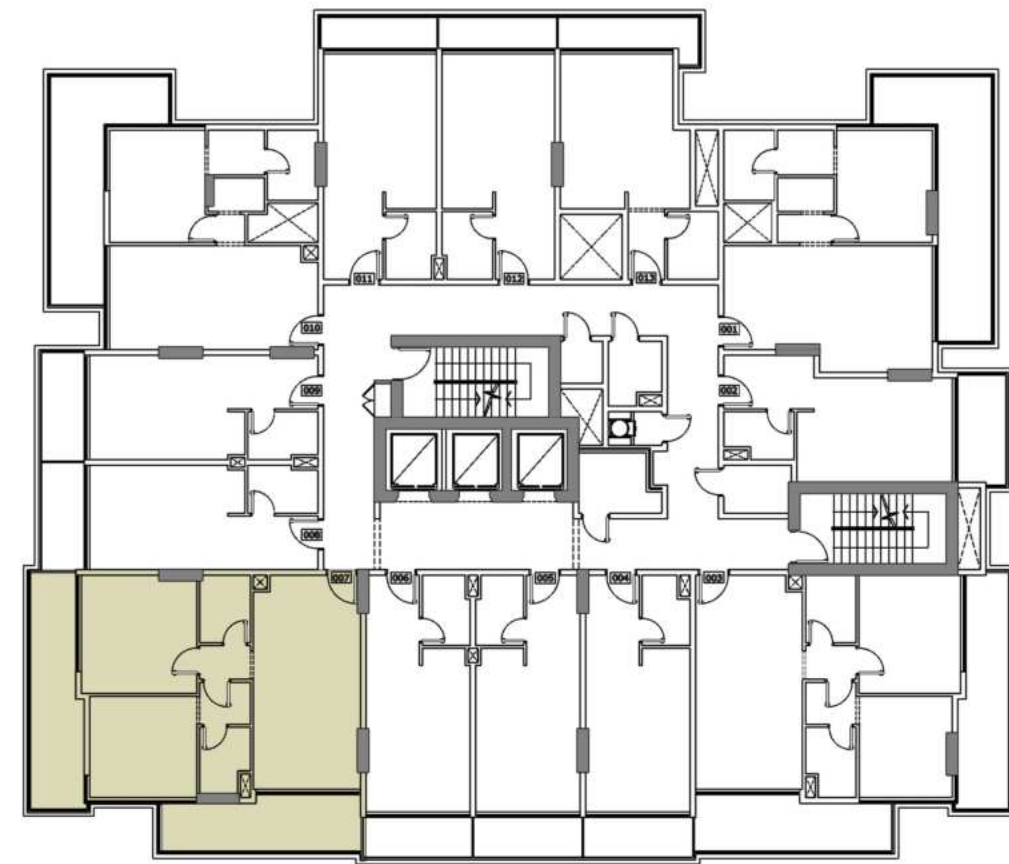
TOTAL AREA 421 Sq. ft.

UNITS 206,406,606,806 & 1006

Disclaimer: all pictures, plans, layouts, information, data and details included in this brochure are indicative only and may change at any time up to the final 'as built' status in accordance with the final designs of the project, regulatory approvals and planning permissions.



ARLINGTON PARK



TYPICAL (2,4,6,8 & 10) FLOOR 2 BEDROOM APARTMENTS

UNIT AREA 847 Sq. ft.

TERR/BAL AREA 325 Sq. ft.

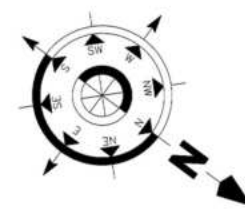
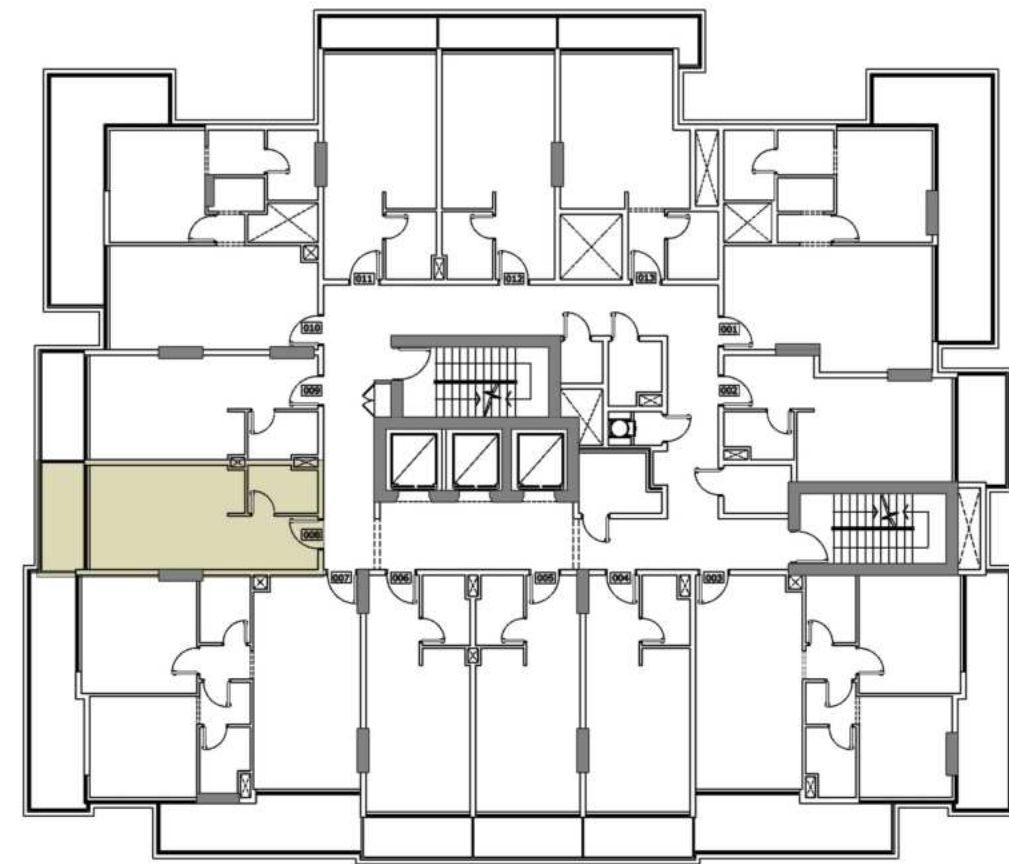
TOTAL AREA 1172 Sq. ft.

UNITS 207,407,607,807 & 1007



Disclaimer: all pictures, plans, layouts, information, data and details included in this brochure are indicative only and may change at any time up to the final 'as built' status in accordance with the final designs of the project, regulatory approvals and planning permissions.

ARLINGTON PARK



TYPICAL (2,4,6,8 & 10) FLOOR STUDIO APARTMENTS



UNIT AREA 345 Sq. ft.

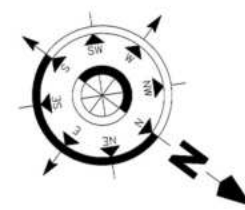
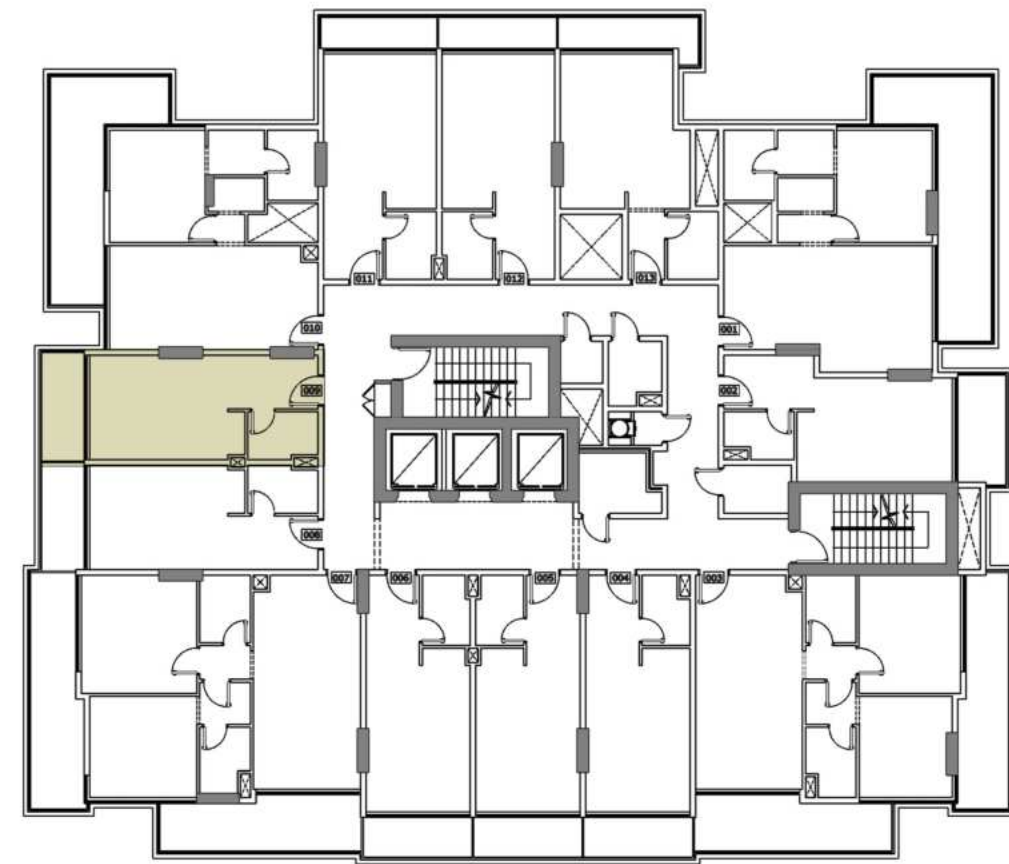
TERR/BAL AREA 68 Sq. ft.

TOTAL AREA 413 Sq. ft.

UNITS 208,408,608,808 & 1008

Disclaimer: all pictures, plans, layouts, information, data and details included in this brochure are indicative only and may change at any time up to the final 'as built' status in accordance with the final designs of the project, regulatory approvals and planning permissions.

ARLINGTON PARK



TYPICAL (2,4,6,8 & 10) FLOOR STUDIO APARTMENTS



UNIT AREA 345 Sq. ft.

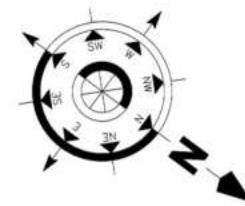
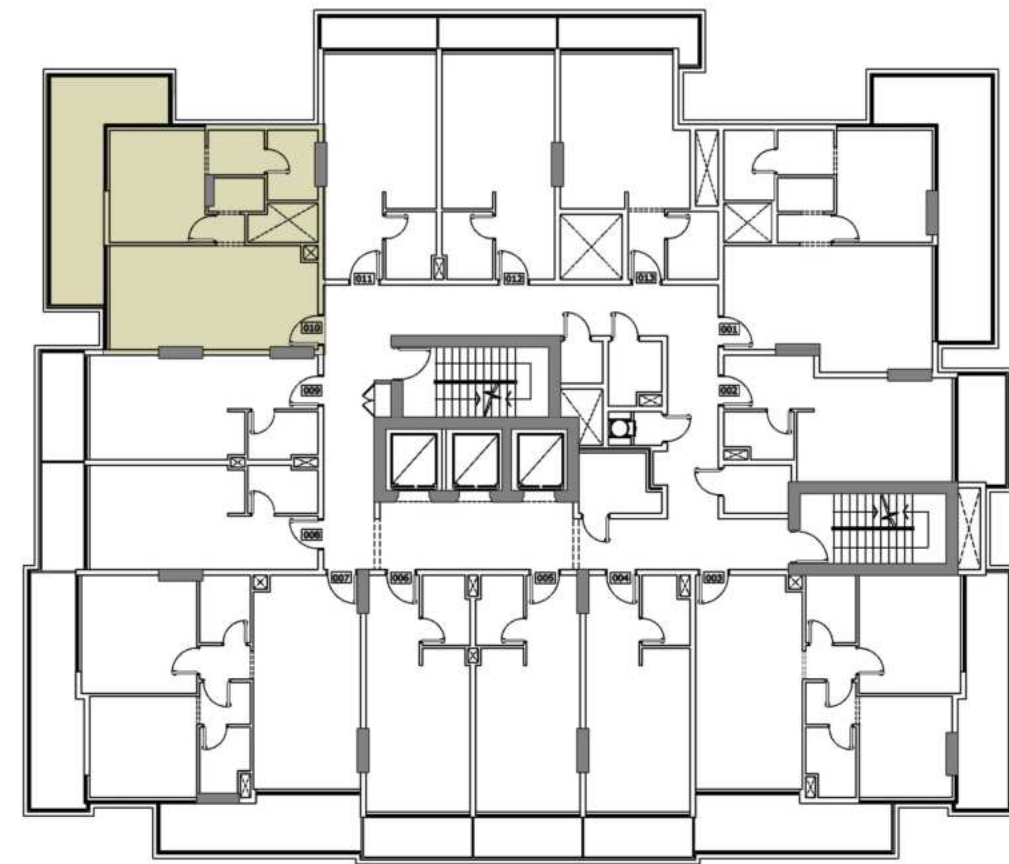
TERR/BAL AREA 68 Sq. ft.

TOTAL AREA 413 Sq. ft.

UNITS 209,409,609,809 & 1009

Disclaimer: all pictures, plans, layouts, information, data and details included in this brochure are indicative only and may change at any time up to the final 'as built' status in accordance with the final designs of the project, regulatory approvals and planning permissions.

ARLINGTON PARK



TYPICAL (2,4,6,8 & 10) FLOOR 1 BEDROOM APARTMENTS

UNIT AREA 610 Sq. ft.

TERR/BAL AREA 221 Sq. ft.

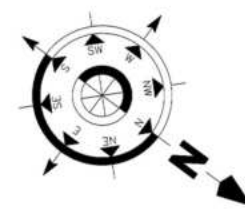
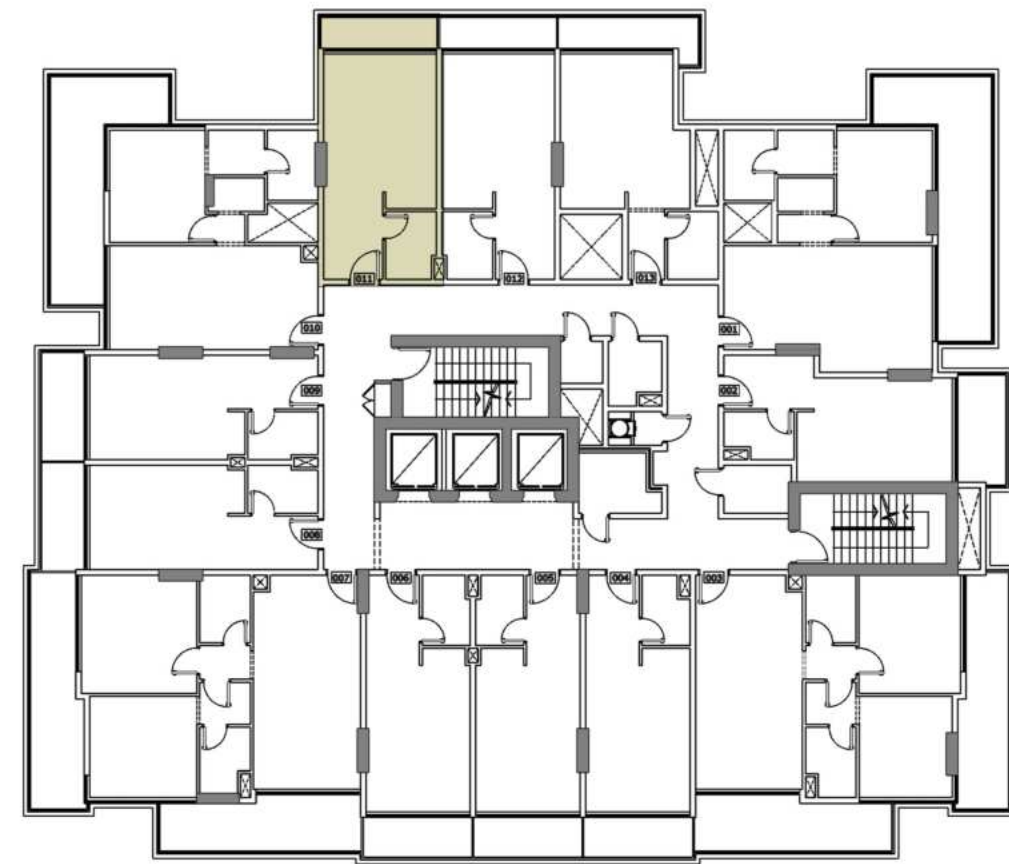
TOTAL AREA 831 Sq. ft.

UNITS 210,410,610,810 & 1010

Disclaimer: all pictures, plans, layouts, information, data and details included in this brochure are indicative only and may change at any time up to the final 'as built' status in accordance with the final designs of the project, regulatory approvals and planning permissions.



ARLINGTON PARK



TYPICAL (2,4,6,8 & 10) FLOOR STUDIO APARTMENTS

UNIT AREA 369 Sq. ft.

TERR/BAL AREA 55 Sq. ft.

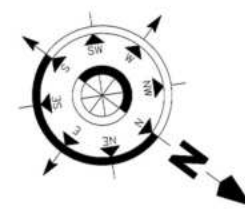
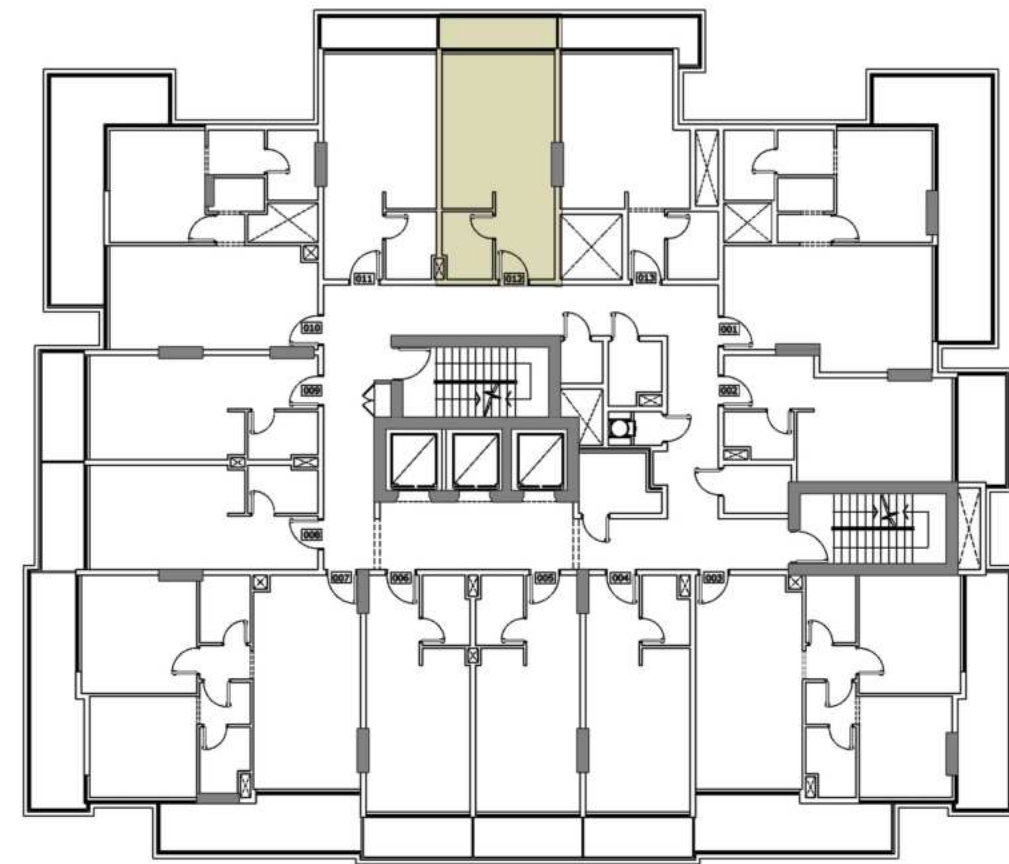
TOTAL AREA 424 Sq. ft.

UNITS 211,411,611,811 & 1011

Disclaimer: all pictures, plans, layouts, information, data and details included in this brochure are indicative only and may change at any time up to the final 'as built' status in accordance with the final designs of the project, regulatory approvals and planning permissions.



ARLINGTON PARK



TYPICAL (2,4,6,8 & 10) FLOOR STUDIO APARTMENTS

UNIT AREA 369 Sq. ft.

TERR/BAL AREA 56 Sq. ft.

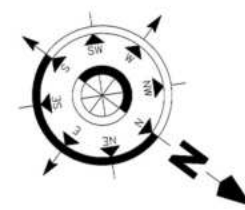
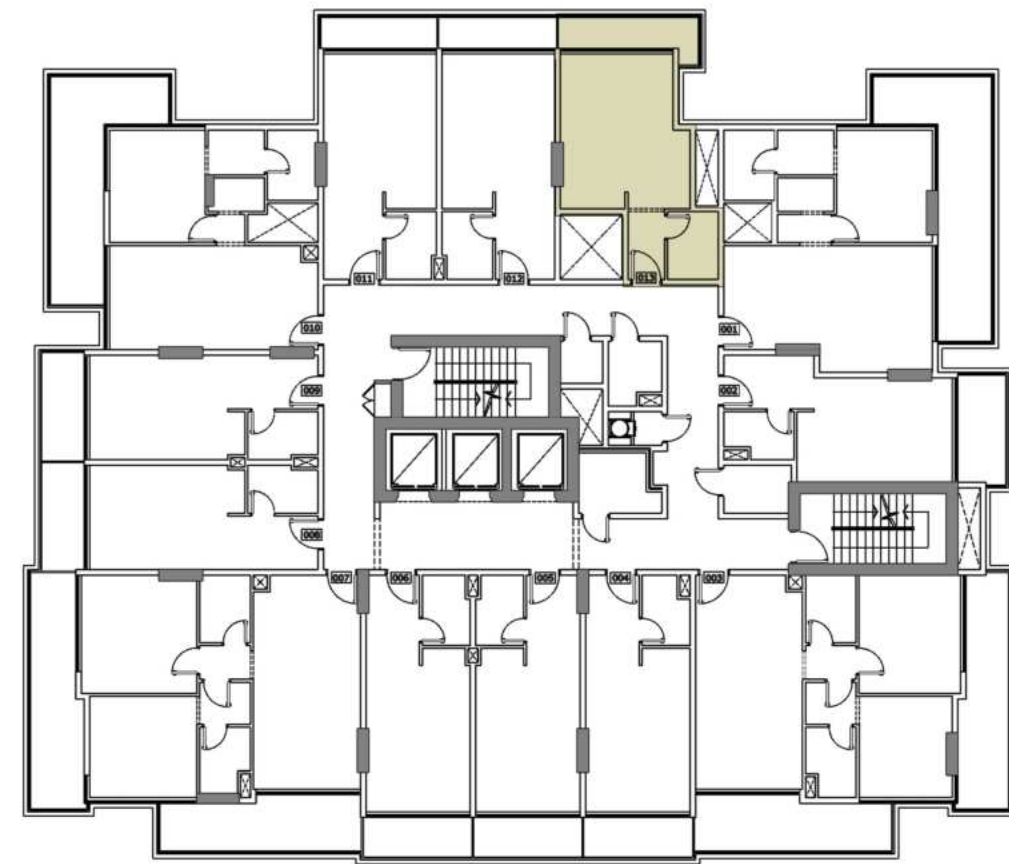
TOTAL AREA 425 Sq. ft.

UNITS 212,412,612,812 & 1012

Disclaimer: all pictures, plans, layouts, information, data and details included in this brochure are indicative only and may change at any time up to the final 'as built' status in accordance with the final designs of the project, regulatory approvals and planning permissions.



ARLINGTON PARK



TYPICAL (2,4,6,8 & 10) FLOOR STUDIO APARTMENTS

UNIT AREA 370 Sq. ft.

TERR/BAL AREA 71 Sq. ft.

TOTAL AREA 441 Sq. ft.

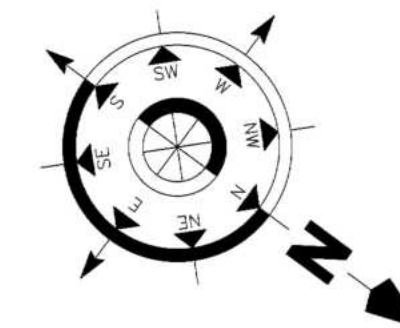
UNITS 213,413,613,813 & 1013



Disclaimer: all pictures, plans, layouts, information, data and details included in this brochure are indicative only and may change at any time up to the final 'as built' status in accordance with the final designs of the project, regulatory approvals and planning permissions.

ARLINGTON PARK

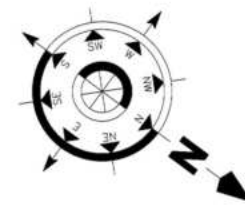
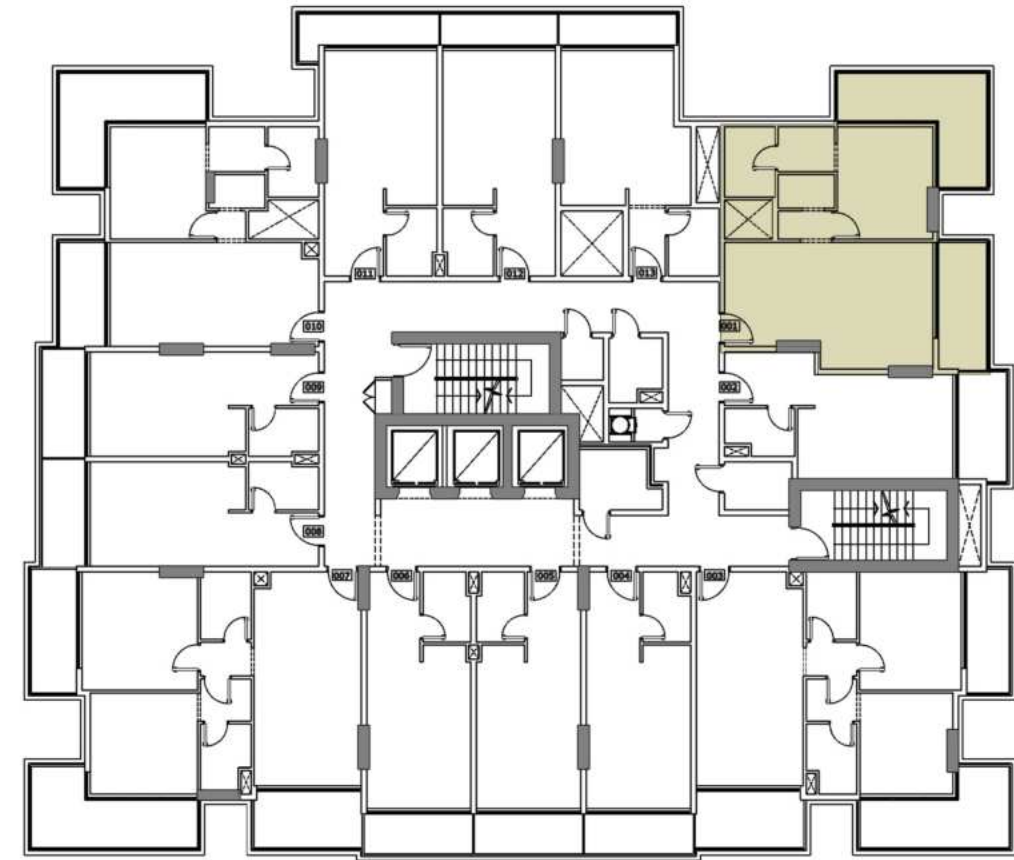
NEIGHBOUR 50.00M



TYPICAL FLOOR PLAN (3,5,7,9 & 11)

Disclaimer: all pictures, plans, layouts, information, data and details included in this brochure are indicative only and may change at any time up to the final 'as built' status in accordance with the final designs of the project, regulatory approvals and planning permissions.

ARLINGTON PARK



TYPICAL (3,5,7,9 & 11) FLOOR 1 BEDROOM APARTMENTS

UNIT AREA 660 Sq. ft.

TERR/BAL AREA 241 Sq. ft.

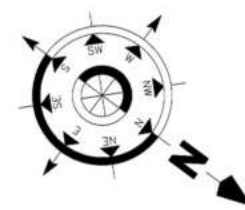
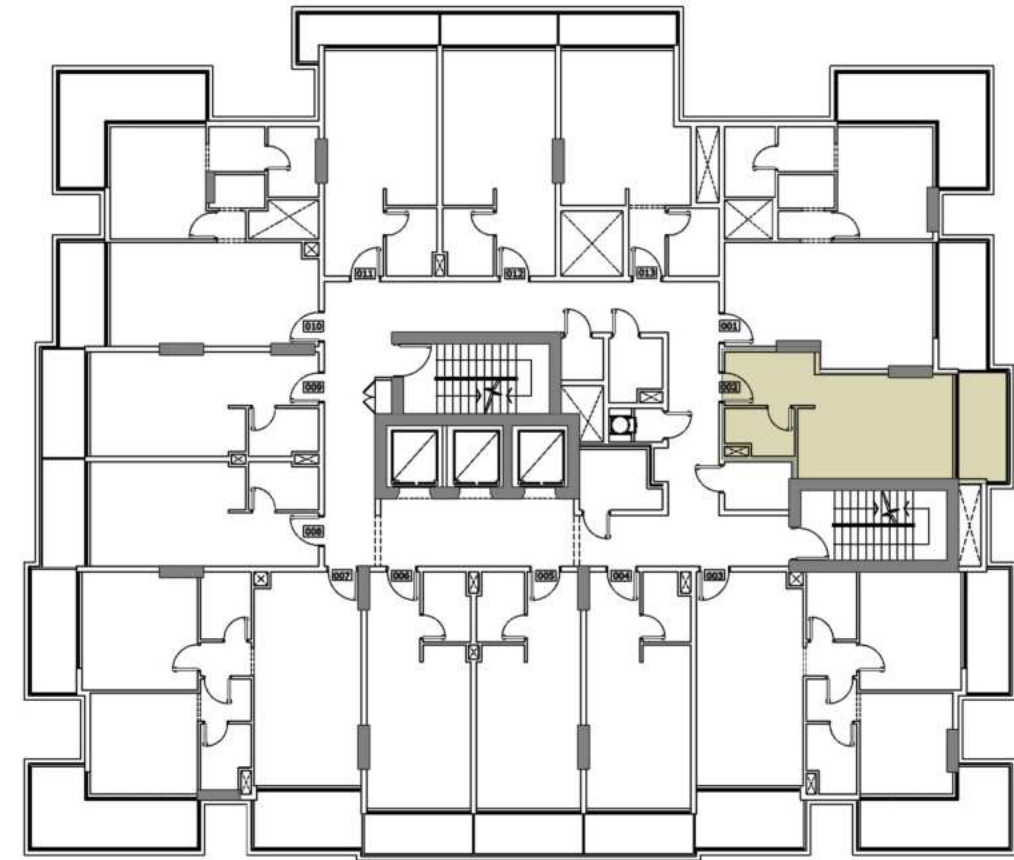
TOTAL AREA 901 Sq. ft.

UNITS 301,501,701,901 & 1101

Disclaimer: all pictures, plans, layouts, information, data and details included in this brochure are indicative only and may change at any time up to the final 'as built' status in accordance with the final designs of the project, regulatory approvals and planning permissions.



ARLINGTON PARK



TYPICAL (3,5,7,9 & 11) FLOOR STUDIO APARTMENTS



UNIT AREA 356 Sq. ft.

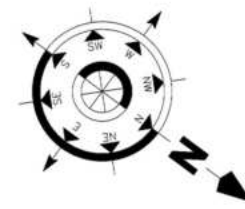
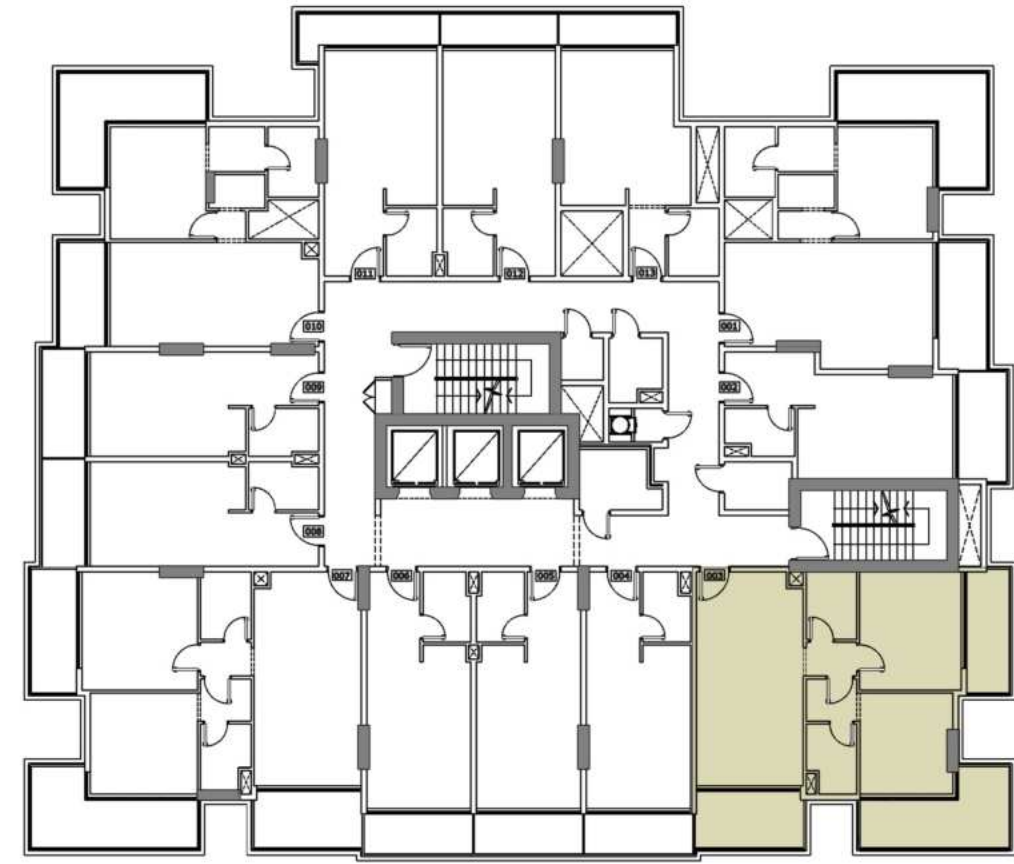
TERR/BAL AREA 77 Sq. ft.

TOTAL AREA 433 Sq. ft.

UNITS 302,502,702,902 & 1102

Disclaimer: all pictures, plans, layouts, information, data and details included in this brochure are indicative only and may change at any time up to the final 'as built' status in accordance with the final designs of the project, regulatory approvals and planning permissions.

ARLINGTON PARK



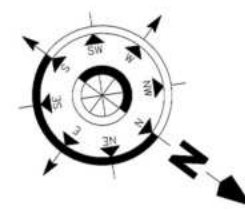
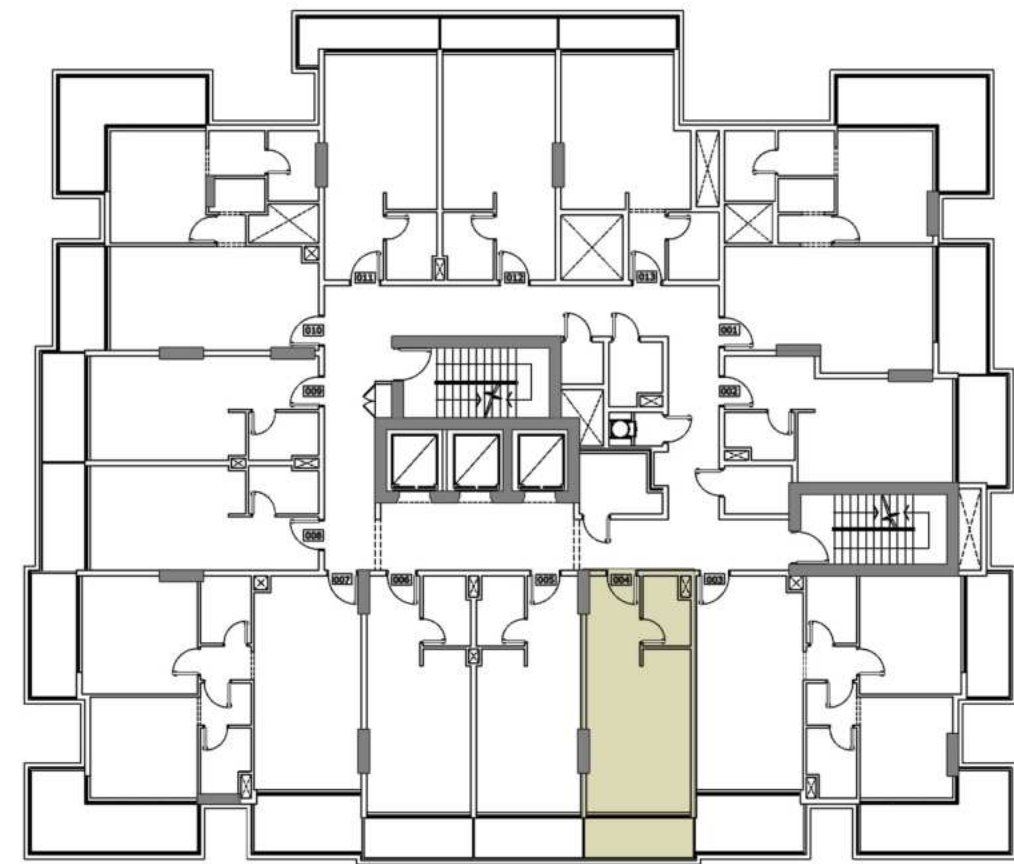
TYPICAL (3,5,7,9 & 11) FLOOR 2 BEDROOM APARTMENTS

UNIT AREA	809 Sq. ft.
TERR/BAL AREA	295 Sq. ft.
TOTAL AREA	1104 Sq. ft.
UNITS	303,503,703,903 & 1103



Disclaimer: all pictures, plans, layouts, information, data and details included in this brochure are indicative only and may change at any time up to the final 'as built' status in accordance with the final designs of the project, regulatory approvals and planning permissions.

ARLINGTON PARK



TYPICAL (3,5,7,9 & 11) FLOOR STUDIO APARTMENTS

UNIT AREA 356 Sq. ft.

TERR/BAL AREA 64 Sq. ft.

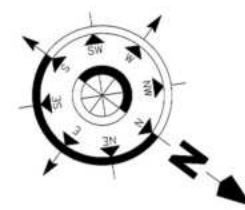
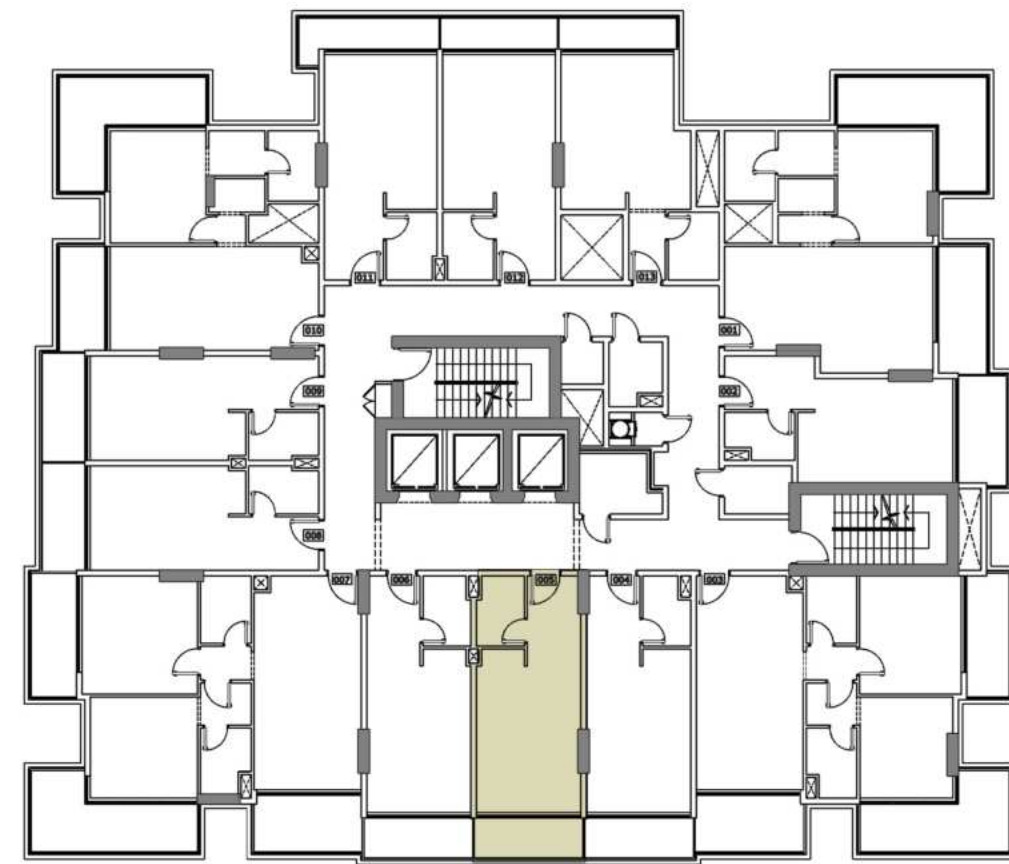
TOTAL AREA 420 Sq. ft.

UNITS 304,504,704,904 & 1104

Disclaimer: all pictures, plans, layouts, information, data and details included in this brochure are indicative only and may change at any time up to the final 'as built' status in accordance with the final designs of the project, regulatory approvals and planning permissions.



ARLINGTON PARK



TYPICAL (3,5,7,9 & 11) FLOOR STUDIO APARTMENTS

UNIT AREA 357 Sq. ft.

TERR/BAL AREA 64 Sq. ft.

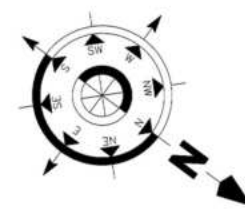
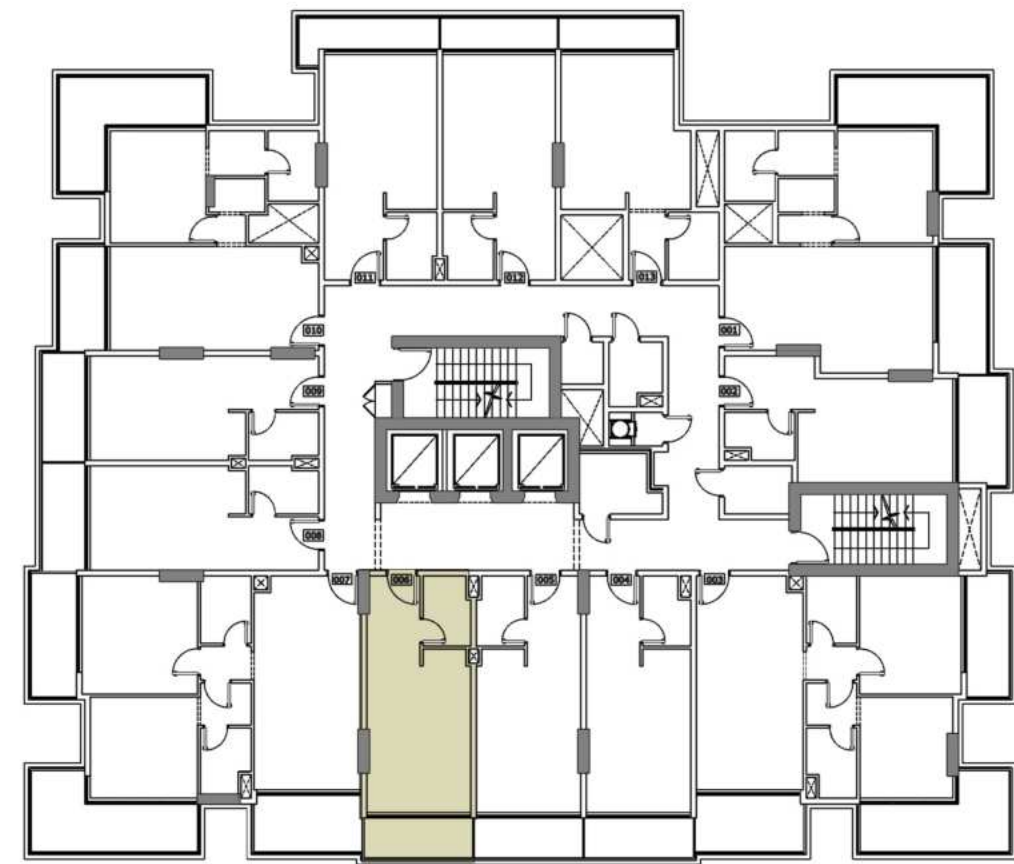
TOTAL AREA 421 Sq. ft.

UNITS 305,505,705,905 & 1105

Disclaimer: all pictures, plans, layouts, information, data and details included in this brochure are indicative only and may change at any time up to the final 'as built' status in accordance with the final designs of the project, regulatory approvals and planning permissions.



ARLINGTON PARK



TYPICAL (3,5,7,9 & 11) FLOOR STUDIO APARTMENTS

UNIT AREA 357 Sq. ft.

TERR/BAL AREA 64 Sq. ft.

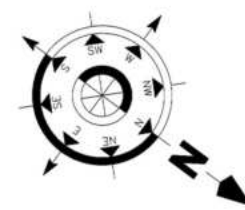
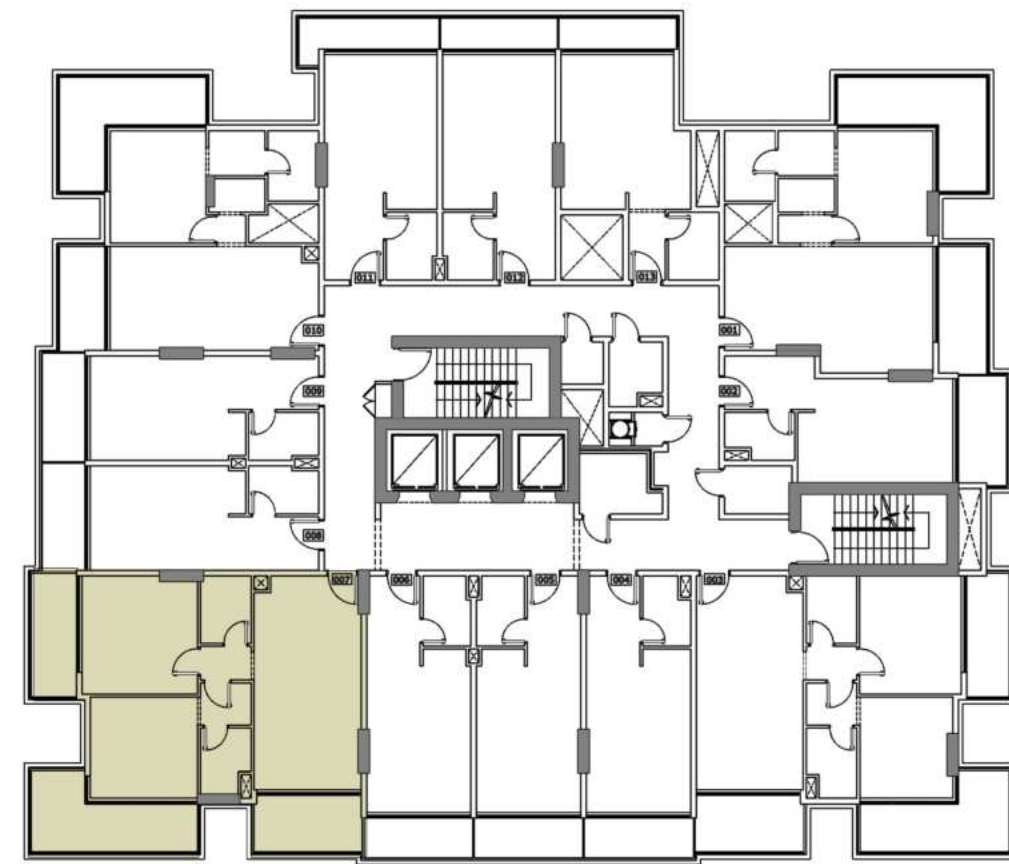
TOTAL AREA 421 Sq. ft.

UNITS 306,506,706,906 & 1106

Disclaimer: all pictures, plans, layouts, information, data and details included in this brochure are indicative only and may change at any time up to the final 'as built' status in accordance with the final designs of the project, regulatory approvals and planning permissions.



ARLINGTON PARK



TYPICAL (3,5,7,9 & 11) FLOOR 2 BEDROOM APARTMENTS

UNIT AREA 847 Sq. ft.

TERR/BAL AREA 313 Sq. ft.

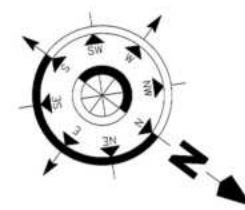
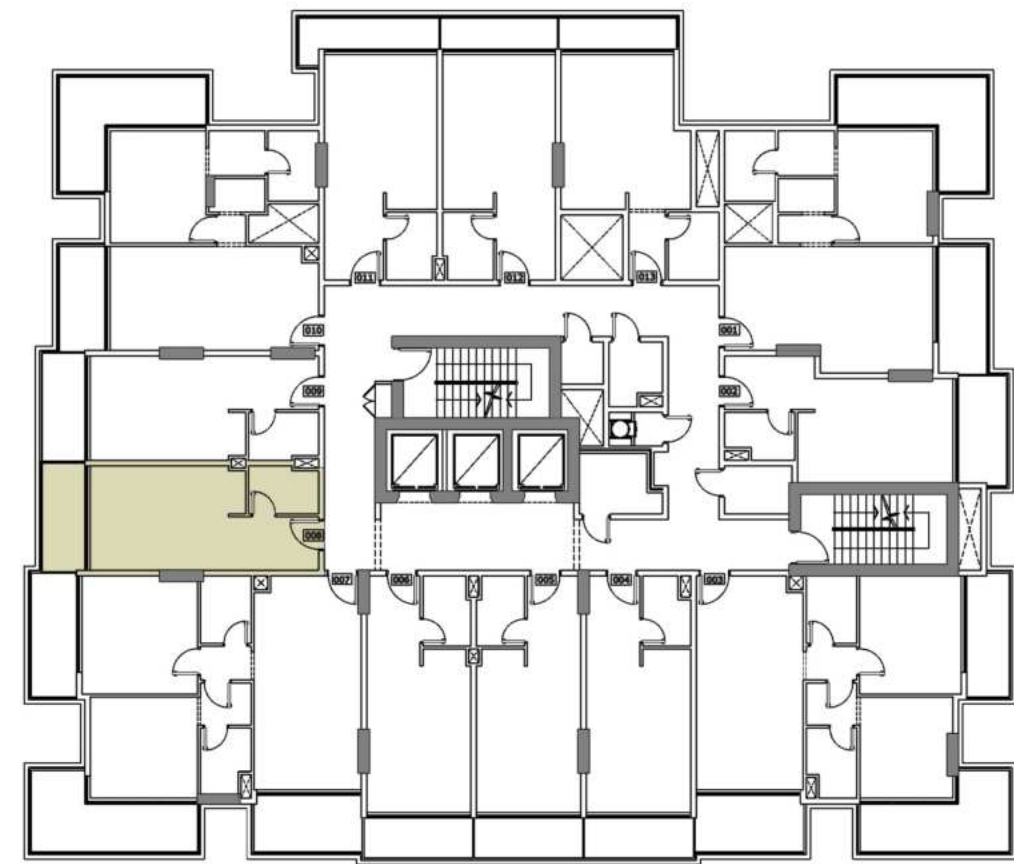
TOTAL AREA 1160 Sq. ft.

UNITS 307,507,707,907 & 1107



Disclaimer: all pictures, plans, layouts, information, data and details included in this brochure are indicative only and may change at any time up to the final 'as built' status in accordance with the final designs of the project, regulatory approvals and planning permissions.

ARLINGTON PARK



TYPICAL (3,5,7,9 & 11) FLOOR STUDIO APARTMENTS



UNIT AREA 345 Sq. ft.

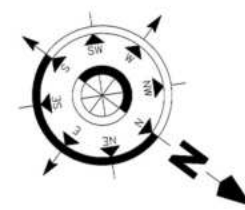
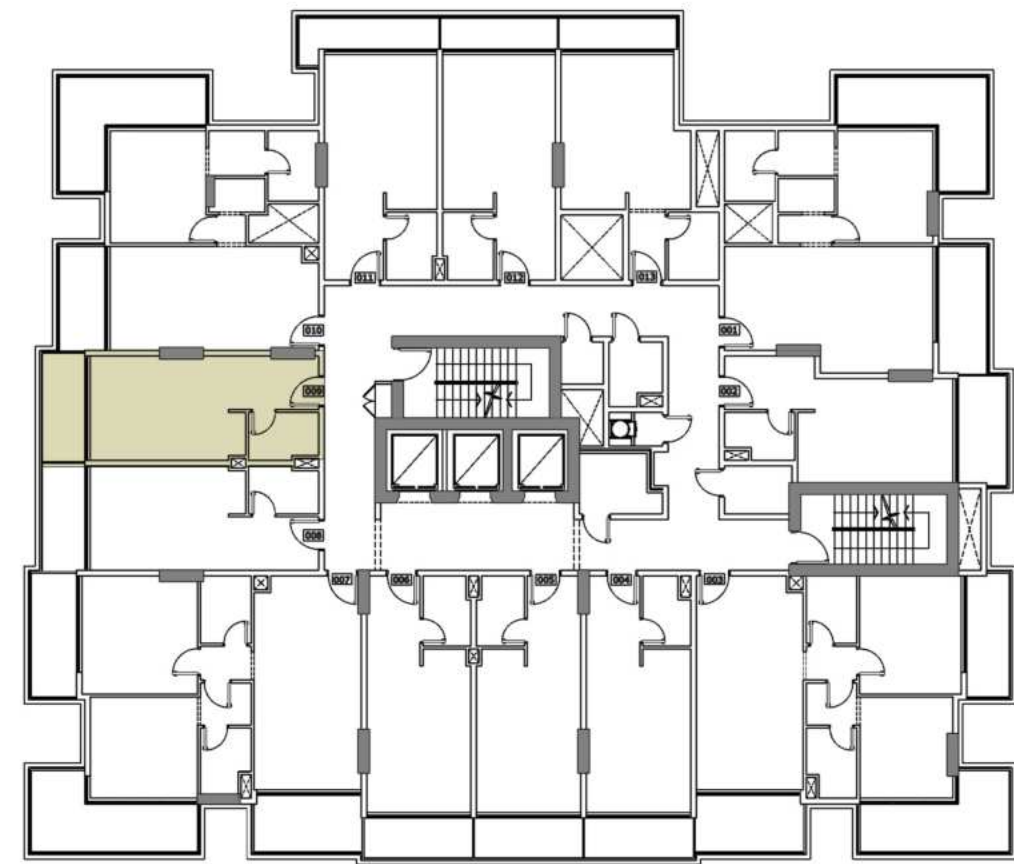
TERR/BAL AREA 68 Sq. ft.

TOTAL AREA 413 Sq. ft.

UNITS 308,508,708,908 & 1108

Disclaimer: all pictures, plans, layouts, information, data and details included in this brochure are indicative only and may change at any time up to the final 'as built' status in accordance with the final designs of the project, regulatory approvals and planning permissions.

ARLINGTON PARK



TYPICAL (3,5,7,9 & 11) FLOOR STUDIO APARTMENTS



UNIT AREA 345 Sq. ft.

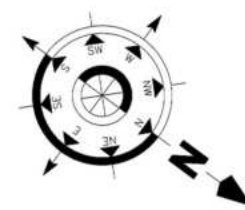
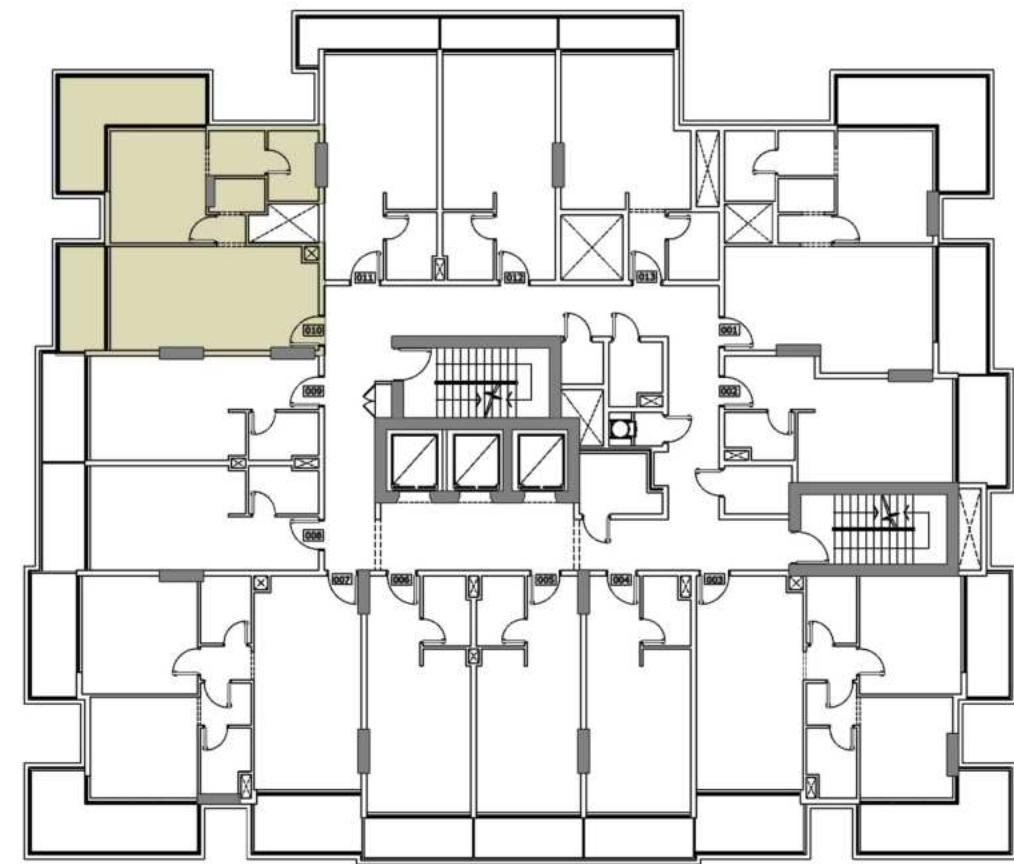
TERR/BAL AREA 68 Sq. ft.

TOTAL AREA 413 Sq. ft.

UNITS 309,509,709,909 & 1109

Disclaimer: all pictures, plans, layouts, information, data and details included in this brochure are indicative only and may change at any time up to the final 'as built' status in accordance with the final designs of the project, regulatory approvals and planning permissions.

ARLINGTON PARK



TYPICAL (3,5,7,9 & 11) FLOOR 1 BEDROOM APARTMENTS

UNIT AREA 610 Sq. ft.

TERR/BAL AREA 216 Sq. ft.

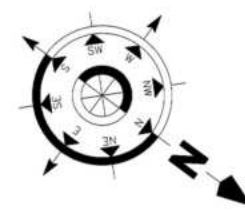
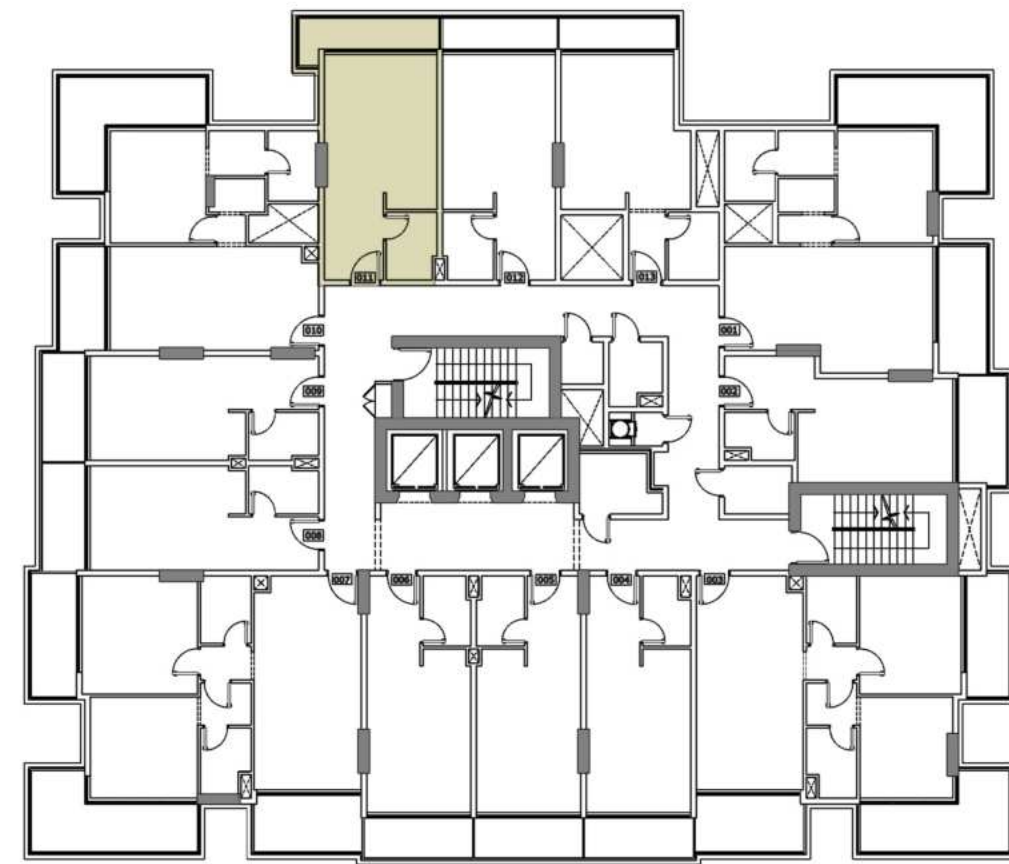
TOTAL AREA 826 Sq. ft.

UNITS 310,510,710,910 & 1110

Disclaimer: all pictures, plans, layouts, information, data and details included in this brochure are indicative only and may change at any time up to the final 'as built' status in accordance with the final designs of the project, regulatory approvals and planning permissions.



ARLINGTON PARK



TYPICAL (3,5,7,9 & 11) FLOOR STUDIO APARTMENTS

UNIT AREA 369 Sq. ft.

TERR/BAL AREA 71 Sq. ft.

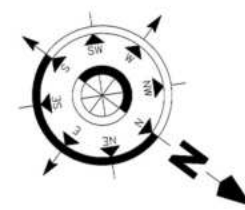
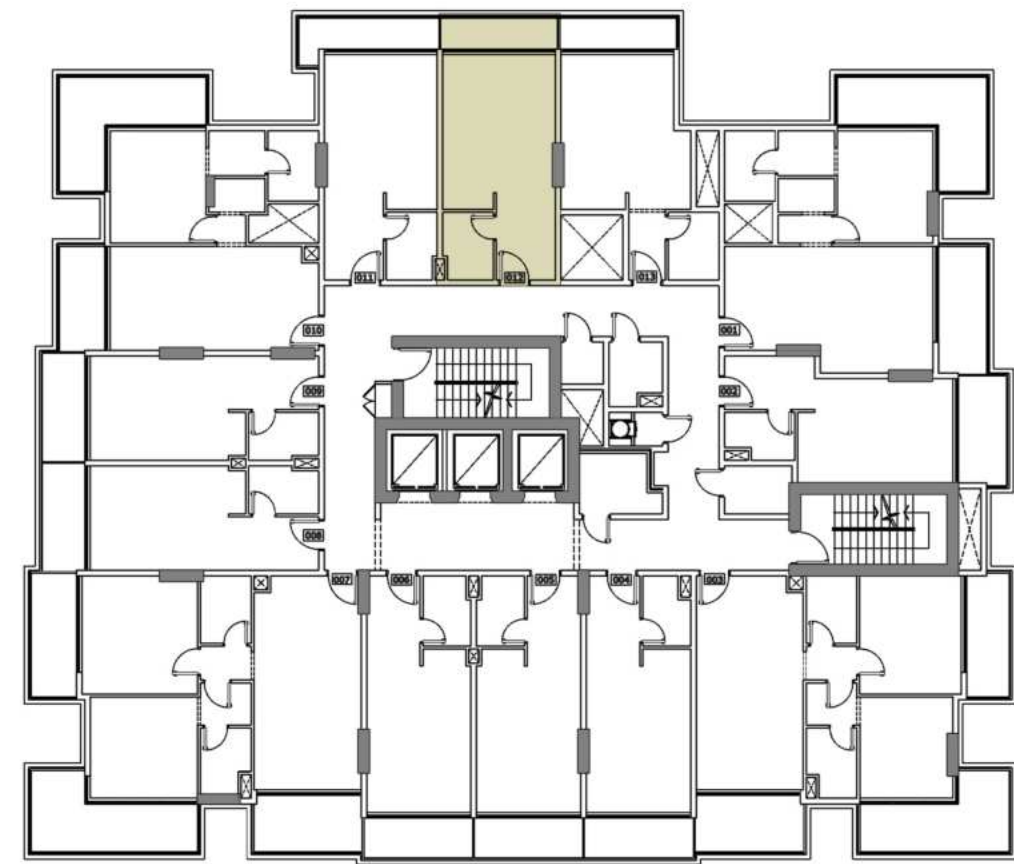
TOTAL AREA 440 Sq. ft.

UNITS 311,511,711,911 & 1111

Disclaimer: all pictures, plans, layouts, information, data and details included in this brochure are indicative only and may change at any time up to the final 'as built' status in accordance with the final designs of the project, regulatory approvals and planning permissions.



ARLINGTON PARK



TYPICAL (3,5,7,9 & 11) FLOOR STUDIO APARTMENTS

UNIT AREA 369 Sq. ft.

TERR/BAL AREA 55 Sq. ft.

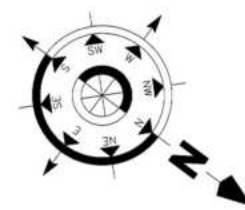
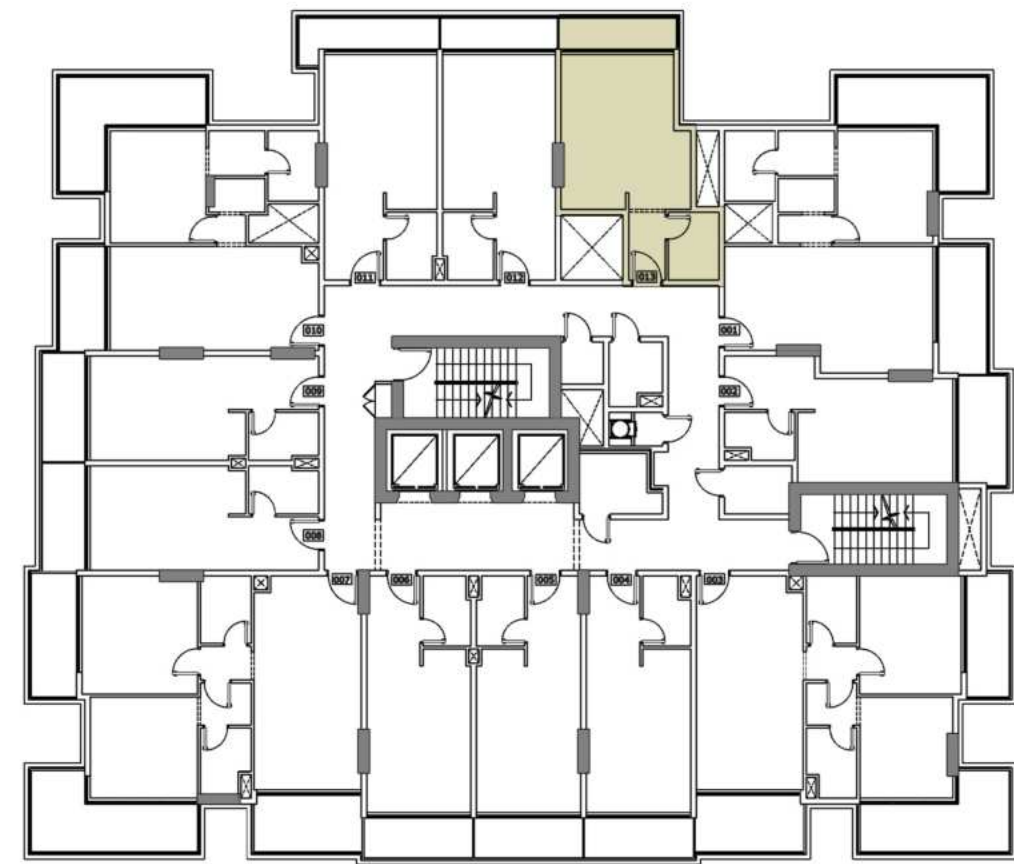
TOTAL AREA 424 Sq. ft.

UNITS 312,512,712,912 & 1112

Disclaimer: all pictures, plans, layouts, information, data and details included in this brochure are indicative only and may change at any time up to the final 'as built' status in accordance with the final designs of the project, regulatory approvals and planning permissions.



ARLINGTON PARK



TYPICAL (3,5,7,9 & 11) FLOOR STUDIO APARTMENTS

UNIT AREA 370 Sq. ft.

TERR/BAL AREA 56 Sq. ft.

TOTAL AREA 426 Sq. ft.

UNITS 313,513,713,913 & 1113

Disclaimer: all pictures, plans, layouts, information, data and details included in this brochure are indicative only and may change at any time up to the final 'as built' status in accordance with the final designs of the project, regulatory approvals and planning permissions.



ARLINGTON
PARK

MAJID[®]
DEVELOPMENTS

majiddevelopments.com