

# WEYBRIDGE GARDENS 4

KENSINGTON EDITION

UNIT FLOOR PLANS

VERSION - 002



LEOS





## LEVELS 1 - 4 & 11 - 13

TYPICAL FLOOR UNITS

- STUDIO
- 1 BEDROOM
- 2 BEDROOM

**DISCLAIMER**

All plans and 3D visualizations are based on conceptual design and are shown for illustration purposes only. Unit layouts are indicative, not to scale, and subject to change without prior notice. All dimensions, if shown, are approximate and exclude all wall finishes and construction tolerances. Furnishings & accessories shown are for representation only. The final built-up areas may vary from the official measurements issued by the 3rd party survey company accredited by the Dubai land department. The developer reserves the right to make any changes on any part of this document if & when they deem necessary.



## LEVELS 5 - 10

### TYPICAL FLOOR UNITS

- STUDIO
- 1 BEDROOM
- 2 BEDROOM

#### DISCLAIMER

All plans and 3D visualizations are based on conceptual design and are shown for illustration purposes only. Unit layouts are indicative, not to scale, and subject to change without prior notice. All dimensions, if shown, are approximate and exclude all wall finishes and construction tolerances. Furnishings & accessories shown are for representation only. The final built-up areas may vary from the official measurements issued by the 3rd party survey company accredited by the Dubai land department. The developer reserves the right to make any changes on any part of this document if & when they deem necessary.



## LEVEL 14

TYPICAL FLOOR UNITS

- STUDIO
- 1 BEDROOM
- 2 BEDROOM
- 3 BEDROOM
- 4 BEDROOM SKY VILLAS

**DISCLAIMER**

All plans and 3D visualizations are based on conceptual design and are shown for illustration purposes only. Unit layouts are indicative, not to scale, and subject to change without prior notice. All dimensions, if shown, are approximate and exclude all wall finishes and construction tolerances. Furnishings & accessories shown are for representation only. The final built-up areas may vary from the official measurements issued by the 3rd party survey company accredited by the Dubai land department. The developer reserves the right to make any changes on any part of this document if & when they deem necessary.





FLOOR PLANS



STUDIO  
APARTMENTS

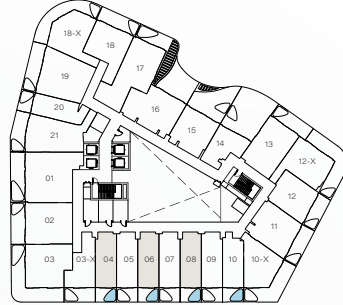
# STUDIO

## UNIT 04 | TYPICAL UNIT TYPE 1A

LEVELS 1 - 4 & 11 - 13  
FLOOR PLATE



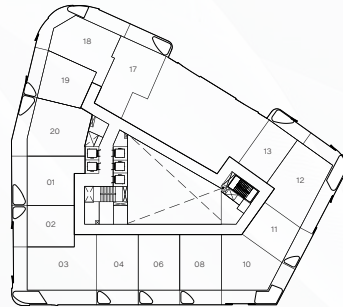
LEVELS 5 TO 10  
FLOOR PLATE



LEVEL 14  
FLOOR PLATE



LEVELS 15  
FLOOR PLATE



TOTAL AREA  
544.12 sq.ft.  
50.55 sq.m.

TOTAL INTERNAL AREA  
432.06 sq.ft.  
40.14 sq.m.

TOTAL EXTERNAL AREA  
112.05 sq.ft.  
10.41 sq.m.



### DISCLAIMER

All plans and 3D visualizations are based on conceptual design and are shown for illustration purposes only. Unit layouts are indicative, not to scale, and subject to change without prior notice. All dimensions, if shown, are approximate and exclude all wall finishes and construction tolerances. Furnishings & accessories shown are for representation only. The final built-up areas may vary from the official measurements issued by the 3rd party survey company accredited by the Dubai land department. The developer reserves the right to make any changes on any part of this document if & when they deem necessary.

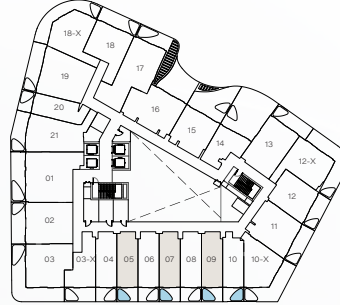
# STUDIO

## UNIT 05 | TYPICAL UNIT TYPE 1B

LEVELS 1 - 4 & 11 - 13  
FLOOR PLATE



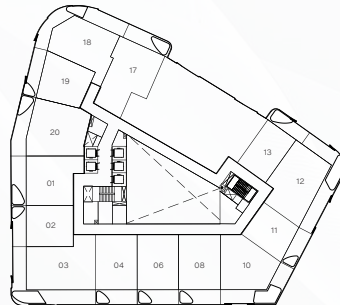
LEVELS 5 TO 10  
FLOOR PLATE



LEVEL 14  
FLOOR PLATE



LEVELS 15  
FLOOR PLATE



TOTAL AREA  
544.12 sq.ft.  
50.55 sq.m.

TOTAL INTERNAL AREA  
432.06 sq.ft.  
40.14 sq.m.

TOTAL EXTERNAL AREA  
112.05 sq.ft.  
10.41 sq.m.



### DISCLAIMER

All plans and 3D visualizations are based on conceptual design and are shown for illustration purposes only. Unit layouts are indicative, not to scale, and subject to change without prior notice. All dimensions, if shown, are approximate and exclude all wall finishes and construction tolerances. Furnishings & accessories shown are for representation only. The final built-up areas may vary from the official measurements issued by the 3rd party survey company accredited by the Dubai land department. The developer reserves the right to make any changes on any part of this document if & when they deem necessary.

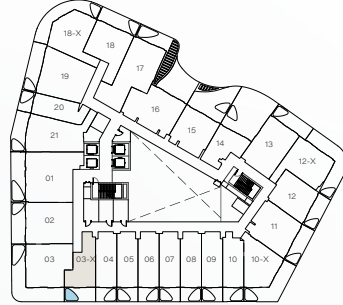
# STUDIO

UNIT 03-X | UNIT TYPE 4

LEVELS 1 - 4 & 11 - 13  
FLOOR PLATE



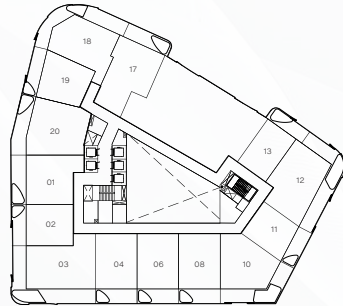
LEVELS 5 TO 10  
FLOOR PLATE



LEVEL 14  
FLOOR PLATE



LEVELS 15  
FLOOR PLATE



TOTAL AREA  
616.13 sq.ft.  
57.24 sq.m.

TOTAL INTERNAL AREA  
447.99 sq.ft.  
41.62 sq.m.

TOTAL EXTERNAL AREA  
168.13 sq.ft.  
15.62 sq.m.



## DISCLAIMER

All plans and 3D visualizations are based on conceptual design and are shown for illustration purposes only. Unit layouts are indicative, not to scale, and subject to change without prior notice. All dimensions, if shown, are approximate and exclude all wall finishes and construction tolerances. Furnishings & accessories shown are for representation only. The final built-up areas may vary from the official measurements issued by the 3rd party survey company accredited by the Dubai land department. The developer reserves the right to make any changes on any part of this document if & when they deem necessary.

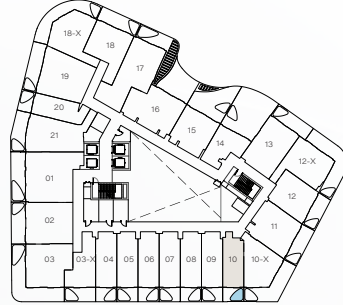
# STUDIO

## UNIT 10 | UNIT TYPE 2

LEVELS 1 - 4 & 11 - 13  
FLOOR PLATE



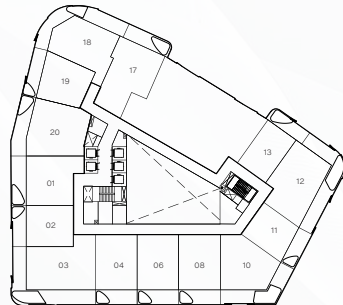
LEVELS 5 TO 10  
FLOOR PLATE



LEVEL 14  
FLOOR PLATE



LEVELS 15  
FLOOR PLATE



TOTAL AREA  
516.24 sq.ft.  
47.96 sq.m.

TOTAL INTERNAL AREA  
402.35 sq.ft.  
37.38 sq.m.

TOTAL EXTERNAL AREA  
113.88 sq.ft.  
10.58 sq.m.



### DISCLAIMER

All plans and 3D visualizations are based on conceptual design and are shown for illustration purposes only. Unit layouts are indicative, not to scale, and subject to change without prior notice. All dimensions, if shown, are approximate and exclude all wall finishes and construction tolerances. Furnishings & accessories shown are for representation only. The final built-up areas may vary from the official measurements issued by the 3rd party survey company accredited by the Dubai land department. The developer reserves the right to make any changes on any part of this document if & when they deem necessary.

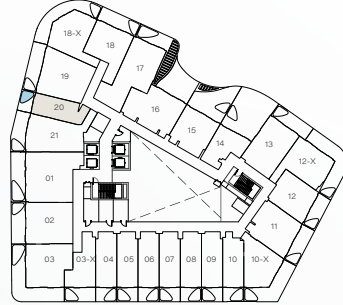
# STUDIO

## UNIT 20 | UNIT TYPE 3

LEVELS 1 - 4 & 11 - 13  
FLOOR PLATE



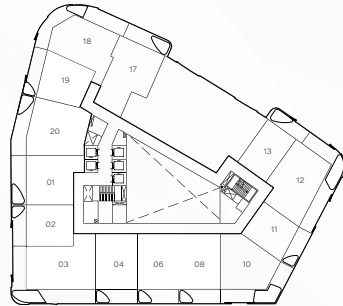
LEVELS 5 TO 10  
FLOOR PLATE



LEVEL 14  
FLOOR PLATE



LEVELS 15  
FLOOR PLATE



TOTAL AREA  
534.32 sq.ft.  
49.64 sq.m.

TOTAL INTERNAL AREA  
421.08 sq.ft.  
39.12 sq.m.

TOTAL EXTERNAL AREA  
113.24 sq.ft.  
10.52 sq.m.



### DISCLAIMER

All plans and 3D visualizations are based on conceptual design and are shown for illustration purposes only. Unit layouts are indicative, not to scale, and subject to change without prior notice. All dimensions, if shown, are approximate and exclude all wall finishes and construction tolerances. Furnishings & accessories shown are for representation only. The final built-up areas may vary from the official measurements issued by the 3rd party survey company accredited by the Dubai land department. The developer reserves the right to make any changes on any part of this document if & when they deem necessary.



# 1 BEDROOM APARTMENTS

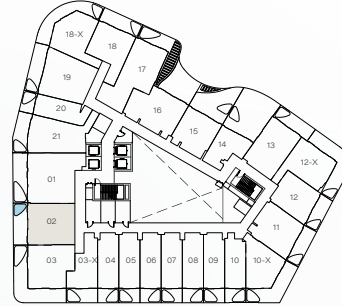
# 1 BEDROOM

## UNIT 02 | TYPICAL UNIT TYPE 01

LEVELS 1 - 4 & 11 - 13  
FLOOR PLATE



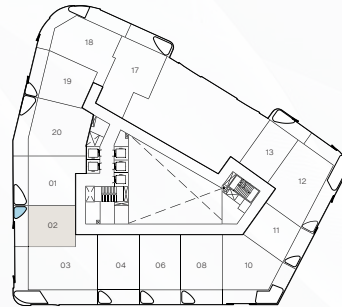
LEVELS 5 TO 10  
FLOOR PLATE



LEVEL 14  
FLOOR PLATE



LEVELS 15  
FLOOR PLATE



**TOTAL AREA**

951.74 sq.ft.

88.42 sq.m.

**TOTAL INTERNAL AREA**

728.39 sq.ft.

67.67 sq.m.

**TOTAL EXTERNAL AREA**

223.35 sq.ft.

20.75 sq.m.

**DISCLAIMER**

All plans and 3D visualizations are based on conceptual design and are shown for illustration purposes only. Unit layouts are indicative, not to scale, and subject to change without prior notice. All dimensions, if shown, are approximate and exclude all wall finishes and construction tolerances. Furnishings & accessories shown are for representation only. The final built-up areas may vary from the official measurements issued by the 3rd party survey company accredited by the Dubai land department. The developer reserves the right to make any changes on any part of this document if & when they deem necessary.

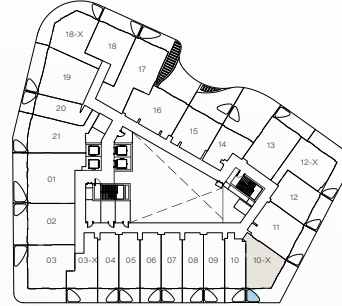
# 1 BEDROOM

UNIT 10-X | TYPICAL UNIT TYPE 09

LEVELS 1 - 4 & 11 - 13  
FLOOR PLATE



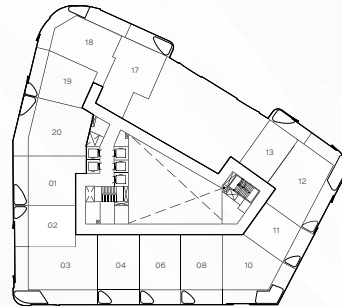
LEVELS 5 TO 10  
FLOOR PLATE



LEVEL 14  
FLOOR PLATE



LEVELS 15  
FLOOR PLATE



TOTAL AREA  
906.97 sq.ft.  
84.26 sq.m.

TOTAL INTERNAL AREA  
553.37 sq.ft.  
51.41 sq.m.

TOTAL EXTERNAL AREA  
353.59 sq.ft.  
32.85 sq.m.



DISCLAIMER

All plans and 3D visualizations are based on conceptual design and are shown for illustration purposes only. Unit layouts are indicative, not to scale, and subject to change without prior notice. All dimensions, if shown, are approximate and exclude all wall finishes and construction tolerances. Furnishings & accessories shown are for representation only. The final built-up areas may vary from the official measurements issued by the 3rd party survey company accredited by the Dubai land department. The developer reserves the right to make any changes on any part of this document if & when they deem necessary.

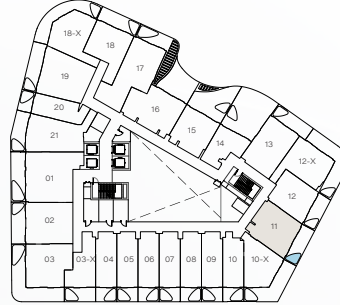
# 1 BEDROOM

UNIT 11 | TYPICAL UNIT TYPE 02

LEVELS 1 - 4 & 11 - 13  
FLOOR PLATE



LEVELS 5 TO 10  
FLOOR PLATE



LEVEL 14  
FLOOR PLATE



LEVELS 15  
FLOOR PLATE



TOTAL AREA  
890.61 sq.ft.  
82.74 sq.m.

TOTAL INTERNAL AREA  
679.20 sq.ft.  
63.10 sq.m.

TOTAL EXTERNAL AREA  
211.40 sq.ft.  
19.64 sq.m.

## DISCLAIMER

All plans and 3D visualizations are based on conceptual design and are shown for illustration purposes only. Unit layouts are indicative, not to scale, and subject to change without prior notice. All dimensions, if shown, are approximate and exclude all wall finishes and construction tolerances. Furnishings & accessories shown are for representation only. The final built-up areas may vary from the official measurements issued by the 3rd party survey company accredited by the Dubai land department. The developer reserves the right to make any changes on any part of this document if & when they deem necessary.

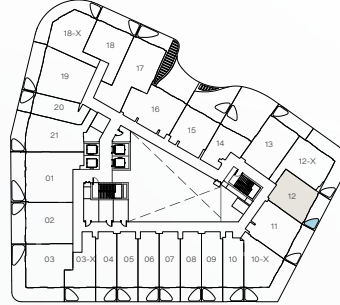
# 1 BEDROOM

UNIT 12 | TYPICAL UNIT TYPE 10

LEVELS 1 - 4 & 11 - 13  
FLOOR PLATE



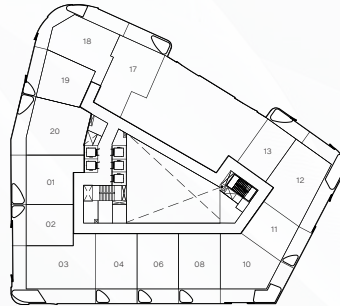
LEVELS 5 TO 10  
FLOOR PLATE



LEVEL 14  
FLOOR PLATE



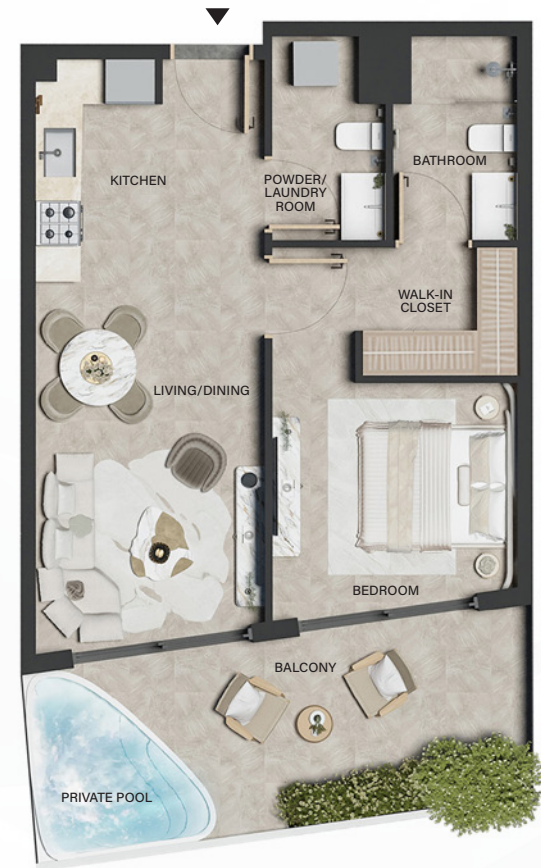
LEVELS 15  
FLOOR PLATE



TOTAL AREA  
742.49 sq.ft.  
68.98 sq.m.

TOTAL INTERNAL AREA  
548.96 sq.ft.  
51.00 sq.m.

TOTAL EXTERNAL AREA  
193.54 sq.ft.  
17.98 sq.m.



## DISCLAIMER

All plans and 3D visualizations are based on conceptual design and are shown for illustration purposes only. Unit layouts are indicative, not to scale, and subject to change without prior notice. All dimensions, if shown, are approximate and exclude all wall finishes and construction tolerances. Furnishings & accessories shown are for representation only. The final built-up areas may vary from the official measurements issued by the 3rd party survey company accredited by the Dubai land department. The developer reserves the right to make any changes on any part of this document if & when they deem necessary.

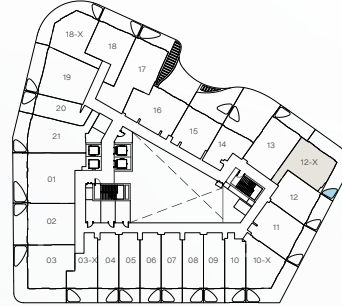
# 1 BEDROOM

UNIT 12-X | TYPICAL UNIT TYPE 11

LEVELS 1 - 4 & 11 - 13  
FLOOR PLATE



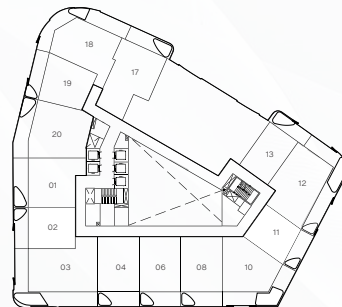
LEVELS 5 TO 10  
FLOOR PLATE



LEVEL 14  
FLOOR PLATE



LEVELS 15  
FLOOR PLATE



TOTAL AREA  
1,074.56 sq.ft.  
99.83 sq.m.

TOTAL INTERNAL AREA  
648.31 sq.ft.  
60.23 sq.m.

TOTAL EXTERNAL AREA  
426.25 sq.ft.  
39.60 sq.m.

DISCLAIMER

All plans and 3D visualizations are based on conceptual design and are shown for illustration purposes only. Unit layouts are indicative, not to scale, and subject to change without prior notice. All dimensions, if shown, are approximate and exclude all wall finishes and construction tolerances. Furnishings & accessories shown are for representation only. The final built-up areas may vary from the official measurements issued by the 3rd party survey company accredited by the Dubai land department. The developer reserves the right to make any changes on any part of this document if & when they deem necessary.

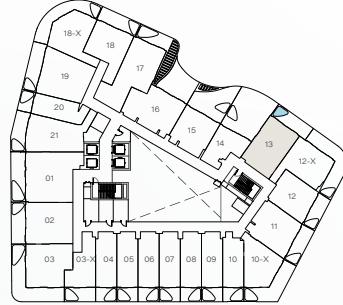
# 1 BEDROOM

## UNIT 13 | TYPICAL UNIT TYPE 03

LEVELS 1 - 4 & 11 - 13  
FLOOR PLATE



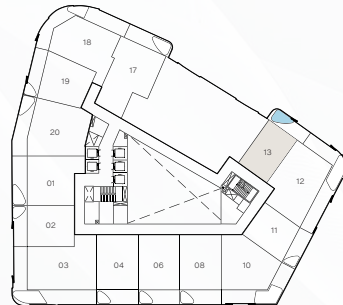
LEVELS 5 TO 10  
FLOOR PLATE



LEVEL 14  
FLOOR PLATE



LEVELS 15  
FLOOR PLATE



### TOTAL AREA

916.01 sq.ft.

85.10 sq.m.

### TOTAL INTERNAL AREA

689.97 sq.ft.

64.10 sq.m.

### TOTAL EXTERNAL AREA

226.04 sq.ft.

21.00 sq.m.

#### DISCLAIMER

All plans and 3D visualizations are based on conceptual design and are shown for illustration purposes only. Unit layouts are indicative, not to scale, and subject to change without prior notice. All dimensions, if shown, are approximate and exclude all wall finishes and construction tolerances. Furnishings & accessories shown are for representation only. The final built-up areas may vary from the official measurements issued by the 3rd party survey company accredited by the Dubai land department. The developer reserves the right to make any changes on any part of this document if & when they deem necessary.

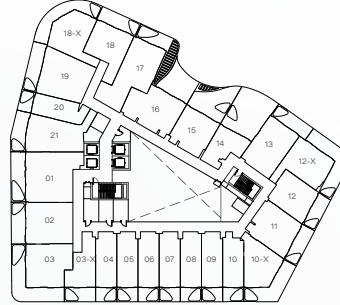
# 1 BEDROOM

UNIT 14 | TYPICAL UNIT TYPE 04A

LEVELS 1 - 4 & 11 - 13  
FLOOR PLATE



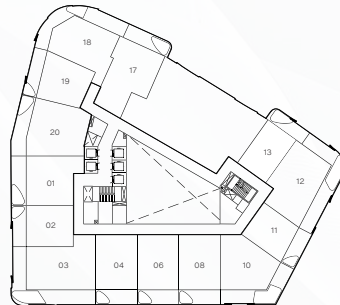
LEVELS 5 TO 10  
FLOOR PLATE



LEVEL 14  
FLOOR PLATE



LEVELS 15  
FLOOR PLATE



TOTAL AREA  
753.47 sq.ft.  
70.00 sq.m.

TOTAL INTERNAL AREA  
425.82 sq.ft.  
39.56 sq.m.

TOTAL EXTERNAL AREA  
327.65 sq.ft.  
30.44 sq.m.



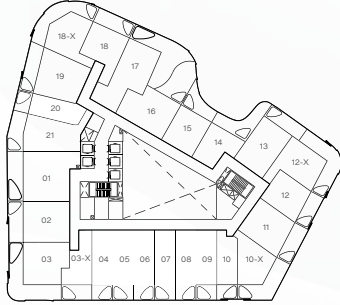
DISCLAIMER

All plans and 3D visualizations are based on conceptual design and are shown for illustration purposes only. Unit layouts are indicative, not to scale, and subject to change without prior notice. All dimensions, if shown, are approximate and exclude all wall finishes and construction tolerances. Furnishings & accessories shown are for representation only. The final built-up areas may vary from the official measurements issued by the 3rd party survey company accredited by the Dubai land department. The developer reserves the right to make any changes on any part of this document if & when they deem necessary.

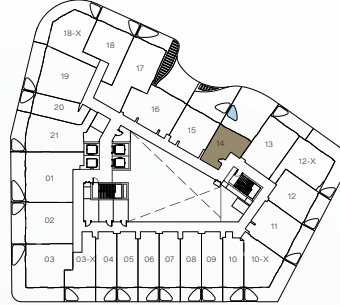
# 1 BEDROOM

UNIT 14 | TYPICAL UNIT TYPE 04B

LEVELS 1 - 4 & 11 - 13  
FLOOR PLATE



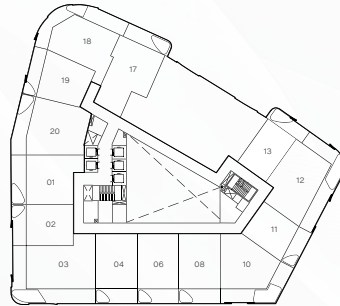
LEVELS 5 TO 10  
FLOOR PLATE



LEVEL 14  
FLOOR PLATE



LEVELS 15  
FLOOR PLATE



TOTAL AREA  
1,086.19 sq.ft.  
100.91 sq.m.

TOTAL INTERNAL AREA  
425.82 sq.ft.  
39.56 sq.m.

TOTAL EXTERNAL AREA  
660.37 sq.ft.  
61.35 sq.m.



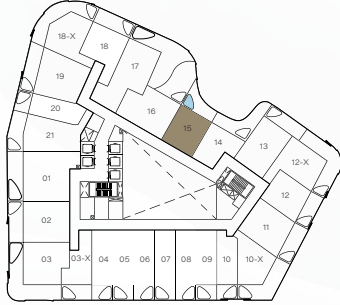
## DISCLAIMER

All plans and 3D visualizations are based on conceptual design and are shown for illustration purposes only. Unit layouts are indicative, not to scale, and subject to change without prior notice. All dimensions, if shown, are approximate and exclude all wall finishes and construction tolerances. Furnishings & accessories shown are for representation only. The final built-up areas may vary from the official measurements issued by the 3rd party survey company accredited by the Dubai land department. The developer reserves the right to make any changes on any part of this document if & when they deem necessary.

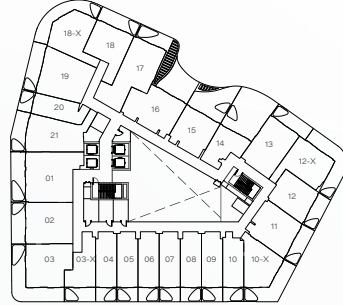
# 1 BEDROOM

UNIT 15 | TYPICAL UNIT TYPE 05A

LEVELS 1 - 4 & 11 - 13  
FLOOR PLATE



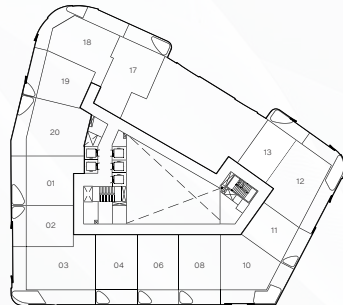
LEVELS 5 TO 10  
FLOOR PLATE



LEVEL 14  
FLOOR PLATE



LEVELS 15  
FLOOR PLATE



TOTAL AREA  
822.26 sq.ft.  
76.39 sq.m.

TOTAL INTERNAL AREA  
591.48 sq.ft.  
54.95 sq.m.

TOTAL EXTERNAL AREA  
230.78 sq.ft.  
21.44 sq.m.



DISCLAIMER

All plans and 3D visualizations are based on conceptual design and are shown for illustration purposes only. Unit layouts are indicative, not to scale, and subject to change without prior notice. All dimensions, if shown, are approximate and exclude all wall finishes and construction tolerances. Furnishings & accessories shown are for representation only. The final built-up areas may vary from the official measurements issued by the 3rd party survey company accredited by the Dubai land department. The developer reserves the right to make any changes on any part of this document if & when they deem necessary.

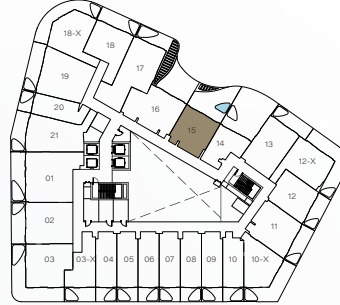
# 1 BEDROOM

UNIT 15 | TYPICAL UNIT TYPE 05B

LEVELS 1 - 4 & 11 - 13  
FLOOR PLATE



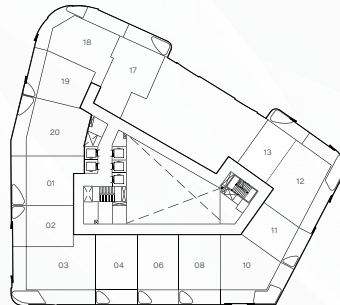
LEVELS 5 TO 10  
FLOOR PLATE



LEVEL 14  
FLOOR PLATE



LEVELS 15  
FLOOR PLATE



TOTAL AREA  
1,005.56 sq.ft.  
93.42 sq.m.

TOTAL INTERNAL AREA  
591.48 sq.ft.  
54.95 sq.m.

TOTAL EXTERNAL AREA  
414.09 sq.ft.  
38.47 sq.m.



DISCLAIMER

All plans and 3D visualizations are based on conceptual design and are shown for illustration purposes only. Unit layouts are indicative, not to scale, and subject to change without prior notice. All dimensions, if shown, are approximate and exclude all wall finishes and construction tolerances. Furnishings & accessories shown are for representation only. The final built-up areas may vary from the official measurements issued by the 3rd party survey company accredited by the Dubai land department. The developer reserves the right to make any changes on any part of this document if & when they deem necessary.

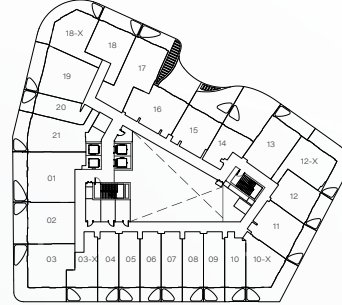
# 1 BEDROOM

UNIT 16 | TYPICAL UNIT TYPE 06A

LEVELS 1 - 4 & 11 - 13  
FLOOR PLATE



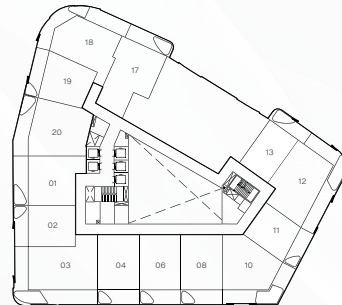
LEVELS 5 TO 10  
FLOOR PLATE



LEVEL 14  
FLOOR PLATE



LEVELS 15  
FLOOR PLATE



TOTAL AREA  
1,491.88 sq.ft.  
138.60 sq.m.

TOTAL INTERNAL AREA  
755.63 sq.ft.  
70.20 sq.m.

TOTAL EXTERNAL AREA  
736.25 sq.ft.  
68.40 sq.m.



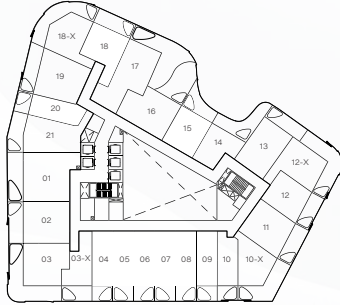
DISCLAIMER

All plans and 3D visualizations are based on conceptual design and are shown for illustration purposes only. Unit layouts are indicative, not to scale, and subject to change without prior notice. All dimensions, if shown, are approximate and exclude all wall finishes and construction tolerances. Furnishings & accessories shown are for representation only. The final built-up areas may vary from the official measurements issued by the 3rd party survey company accredited by the Dubai land department. The developer reserves the right to make any changes on any part of this document if & when they deem necessary.

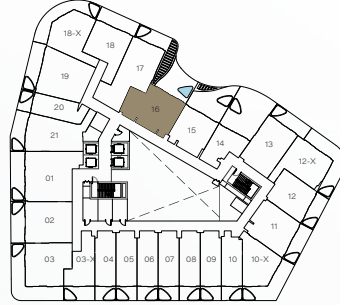
# 1 BEDROOM

UNIT 16 | TYPICAL UNIT TYPE 06B

LEVELS 1 - 4 & 11 - 13  
FLOOR PLATE



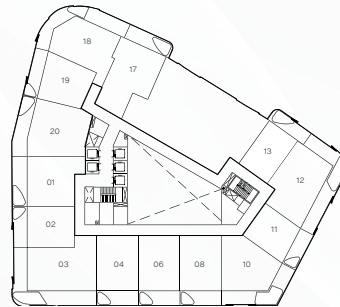
LEVELS 5 TO 10  
FLOOR PLATE



LEVEL 14  
FLOOR PLATE



LEVELS 15  
FLOOR PLATE



TOTAL AREA  
942.38 sq.ft.  
87.55 sq.m.

TOTAL INTERNAL AREA  
767.79 sq.ft.  
71.33 sq.m.

TOTAL EXTERNAL AREA  
174.59 sq.ft.  
16.22 sq.m.

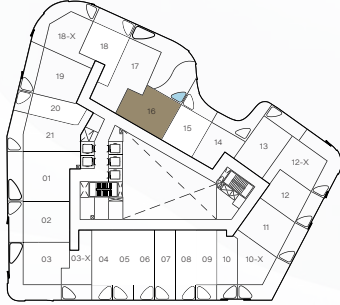
## DISCLAIMER

All plans and 3D visualizations are based on conceptual design and are shown for illustration purposes only. Unit layouts are indicative, not to scale, and subject to change without prior notice. All dimensions, if shown, are approximate and exclude all wall finishes and construction tolerances. Furnishings & accessories shown are for representation only. The final built-up areas may vary from the official measurements issued by the 3rd party survey company accredited by the Dubai land department. The developer reserves the right to make any changes on any part of this document if & when they deem necessary.

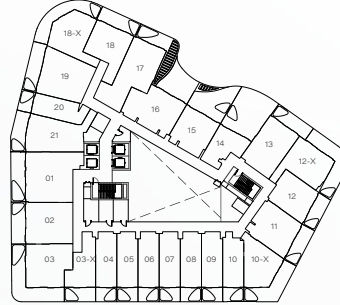
# 1 BEDROOM

UNIT 16 | TYPICAL UNIT TYPE 06C

LEVELS 1 - 4 & 11 - 13  
FLOOR PLATE



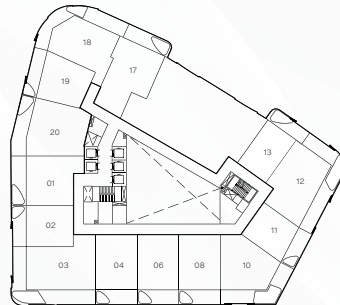
LEVELS 5 TO 10  
FLOOR PLATE



LEVEL 14  
FLOOR PLATE



LEVELS 15  
FLOOR PLATE



TOTAL AREA  
1,161.21 sq.ft.  
107.88 sq.m.

TOTAL INTERNAL AREA  
767.79 sq.ft.  
71.33 sq.m.

TOTAL EXTERNAL AREA  
393.42 sq.ft.  
36.55 sq.m.

DISCLAIMER

All plans and 3D visualizations are based on conceptual design and are shown for illustration purposes only. Unit layouts are indicative, not to scale, and subject to change without prior notice. All dimensions, if shown, are approximate and exclude all wall finishes and construction tolerances. Furnishings & accessories shown are for representation only. The final built-up areas may vary from the official measurements issued by the 3rd party survey company accredited by the Dubai land department. The developer reserves the right to make any changes on any part of this document if & when they deem necessary.

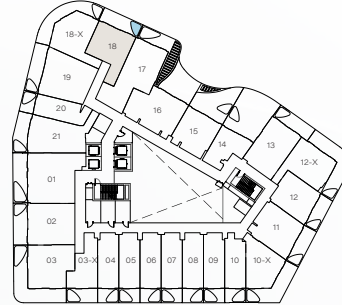
# 1 BEDROOM

UNIT 18 | TYPICAL UNIT TYPE 12

LEVELS 1 - 4 & 11 - 13  
FLOOR PLATE



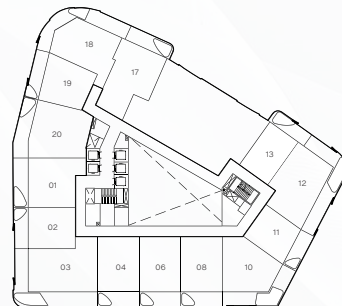
LEVELS 5 TO 10  
FLOOR PLATE



LEVEL 14  
FLOOR PLATE



LEVELS 15  
FLOOR PLATE



TOTAL AREA  
832.80 sq.ft.  
77.37 sq.m.

TOTAL INTERNAL AREA  
608.05 sq.ft.  
56.49 sq.m.

TOTAL EXTERNAL AREA  
224.75 sq.ft.  
20.88 sq.m.

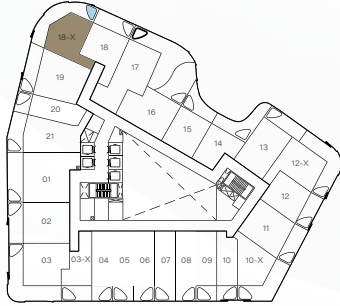
**DISCLAIMER**

All plans and 3D visualizations are based on conceptual design and are shown for illustration purposes only. Unit layouts are indicative, not to scale, and subject to change without prior notice. All dimensions, if shown, are approximate and exclude all wall finishes and construction tolerances. Furnishings & accessories shown are for representation only. The final built-up areas may vary from the official measurements issued by the 3rd party survey company accredited by the Dubai land department. The developer reserves the right to make any changes on any part of this document if & when they deem necessary.

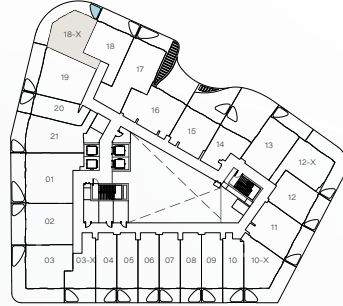
# 1 BEDROOM

UNIT 18-X | TYPICAL UNIT TYPE 13

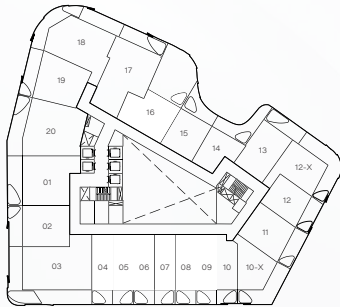
LEVELS 1 - 4 & 11 - 13  
FLOOR PLATE



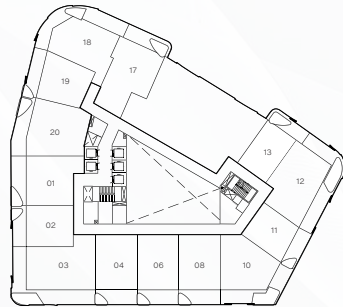
LEVELS 5 TO 10  
FLOOR PLATE



LEVEL 14  
FLOOR PLATE



LEVELS 15  
FLOOR PLATE



TOTAL AREA  
1,022.46 sq.ft.  
94.99 sq.m.

TOTAL INTERNAL AREA  
638.08 sq.ft.  
59.28 sq.m.

TOTAL EXTERNAL AREA  
384.38 sq.ft.  
35.71 sq.m.

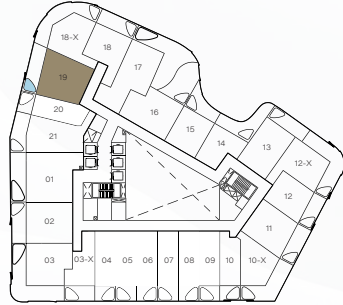
DISCLAIMER

All plans and 3D visualizations are based on conceptual design and are shown for illustration purposes only. Unit layouts are indicative, not to scale, and subject to change without prior notice. All dimensions, if shown, are approximate and exclude all wall finishes and construction tolerances. Furnishings & accessories shown are for representation only. The final built-up areas may vary from the official measurements issued by the 3rd party survey company accredited by the Dubai land department. The developer reserves the right to make any changes on any part of this document if & when they deem necessary.

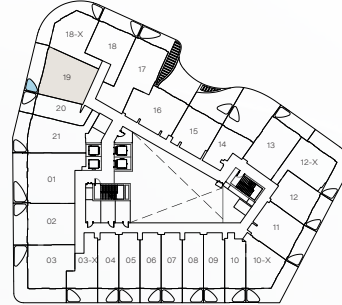
# 1 BEDROOM

UNIT 19 | TYPICAL UNIT TYPE 07

LEVELS 1 - 4 & 11 - 13  
FLOOR PLATE



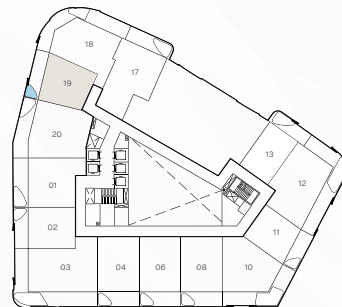
LEVELS 5 TO 10  
FLOOR PLATE



LEVEL 14  
FLOOR PLATE



LEVELS 15  
FLOOR PLATE



TOTAL AREA  
1,057.12 sq.ft.  
98.21 sq.m.

TOTAL INTERNAL AREA  
797.93 sq.ft.  
74.13 sq.m.

TOTAL EXTERNAL AREA  
259.19 sq.ft.  
24.08 sq.m.

**DISCLAIMER**

All plans and 3D visualizations are based on conceptual design and are shown for illustration purposes only. Unit layouts are indicative, not to scale, and subject to change without prior notice. All dimensions, if shown, are approximate and exclude all wall finishes and construction tolerances. Furnishings & accessories shown are for representation only. The final built-up areas may vary from the official measurements issued by the 3rd party survey company accredited by the Dubai land department. The developer reserves the right to make any changes on any part of this document if & when they deem necessary.

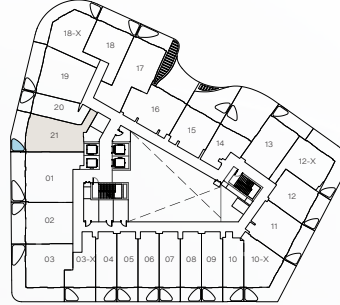
# 1 BEDROOM

UNIT 21 | UNIT TYPE 14

LEVELS 1 - 4 & 11 - 13  
FLOOR PLATE



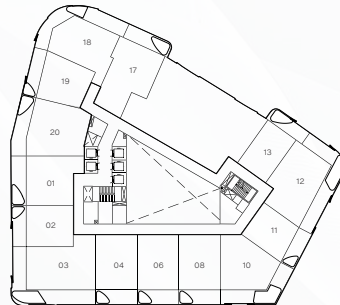
LEVELS 5 TO 10  
FLOOR PLATE



LEVEL 14  
FLOOR PLATE



LEVELS 15  
FLOOR PLATE



TOTAL AREA  
969.51 sq.ft.  
90.07 sq.m.

TOTAL INTERNAL AREA  
746.05 sq.ft.  
69.31 sq.m.

TOTAL EXTERNAL AREA  
223.46 sq.ft.  
20.76 sq.m.

## DISCLAIMER

All plans and 3D visualizations are based on conceptual design and are shown for illustration purposes only. Unit layouts are indicative, not to scale, and subject to change without prior notice. All dimensions, if shown, are approximate and exclude all wall finishes and construction tolerances. Furnishings & accessories shown are for representation only. The final built-up areas may vary from the official measurements issued by the 3rd party survey company accredited by the Dubai land department. The developer reserves the right to make any changes on any part of this document if & when they deem necessary.

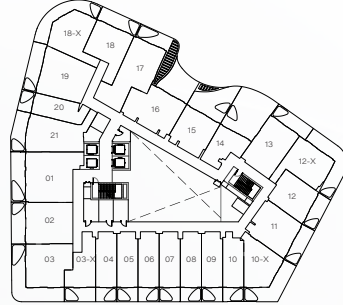
# 1 BEDROOM

UNIT 04 | TYPICAL UNIT TYPE 08

LEVELS 1 - 4 & 11 - 13  
FLOOR PLATE



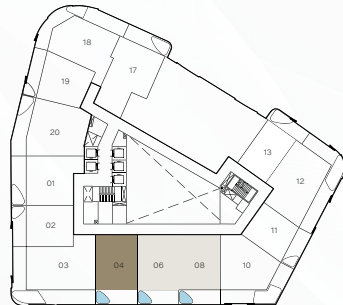
LEVELS 5 TO 10  
FLOOR PLATE



LEVEL 14  
FLOOR PLATE



LEVELS 15  
FLOOR PLATE



TOTAL AREA  
1,100.18 sq.ft.  
102.21 sq.m.

TOTAL INTERNAL AREA  
877.04 sq.ft.  
81.48 sq.m.

TOTAL EXTERNAL AREA  
223.14 sq.ft.  
20.73 sq.m.



## DISCLAIMER

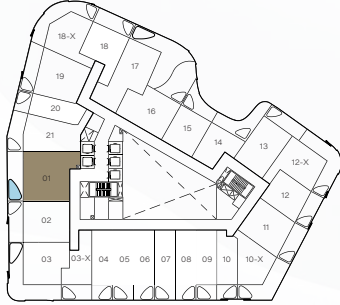
All plans and 3D visualizations are based on conceptual design and are shown for illustration purposes only. Unit layouts are indicative, not to scale, and subject to change without prior notice. All dimensions, if shown, are approximate and exclude all wall finishes and construction tolerances. Furnishings & accessories shown are for representation only. The final built-up areas may vary from the official measurements issued by the 3rd party survey company accredited by the Dubai land department. The developer reserves the right to make any changes on any part of this document if & when they deem necessary.



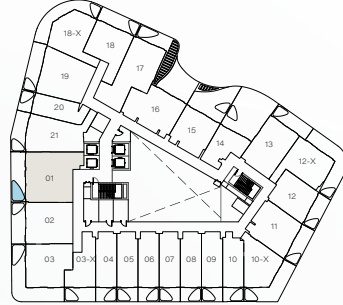
# 2 BEDROOM

## UNIT 01 | TYPICAL UNIT TYPE 01

LEVELS 1 - 4 & 11 - 13  
FLOOR PLATE



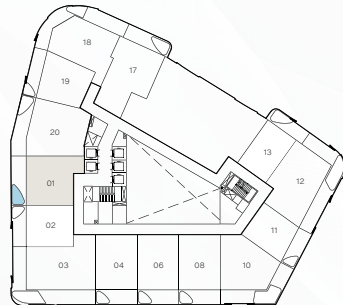
LEVELS 5 TO 10  
FLOOR PLATE



LEVEL 14  
FLOOR PLATE



LEVELS 15  
FLOOR PLATE



TOTAL AREA  
1,209.65 sq.ft.  
112.38 sq.m.

TOTAL INTERNAL AREA  
946.90 sq.ft.  
87.97 sq.m.

TOTAL EXTERNAL AREA  
262.75 sq.ft.  
24.41 sq.m.

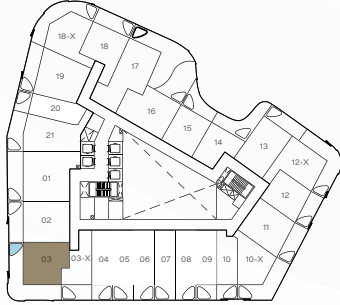
### DISCLAIMER

All plans and 3D visualizations are based on conceptual design and are shown for illustration purposes only. Unit layouts are indicative, not to scale, and subject to change without prior notice. All dimensions, if shown, are approximate and exclude all wall finishes and construction tolerances. Furnishings & accessories shown are for representation only. The final built-up areas may vary from the official measurements issued by the 3rd party survey company accredited by the Dubai land department. The developer reserves the right to make any changes on any part of this document if & when they deem necessary.

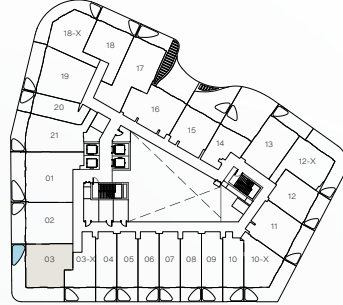
# 2 BEDROOM

UNIT 03 | TYPICAL UNIT TYPE 04

LEVELS 1 - 4 & 11 - 13  
FLOOR PLATE



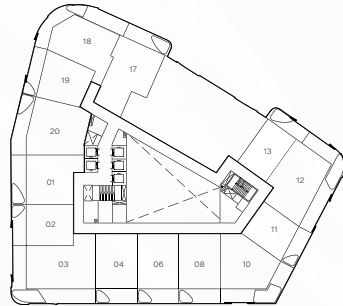
LEVELS 5 TO 10  
FLOOR PLATE



LEVEL 14  
FLOOR PLATE



LEVELS 15  
FLOOR PLATE



TOTAL AREA  
1,206.63 sq.ft.  
112.10 sq.m.

TOTAL INTERNAL AREA  
708.48 sq.ft.  
65.82 sq.m.

TOTAL EXTERNAL AREA  
498.15 sq.ft.  
46.28 sq.m.

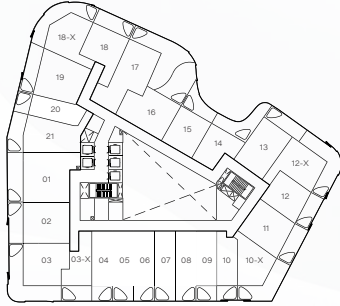
## DISCLAIMER

All plans and 3D visualizations are based on conceptual design and are shown for illustration purposes only. Unit layouts are indicative, not to scale, and subject to change without prior notice. All dimensions, if shown, are approximate and exclude all wall finishes and construction tolerances. Furnishings & accessories shown are for representation only. The final built-up areas may vary from the official measurements issued by the 3rd party survey company accredited by the Dubai land department. The developer reserves the right to make any changes on any part of this document if & when they deem necessary.

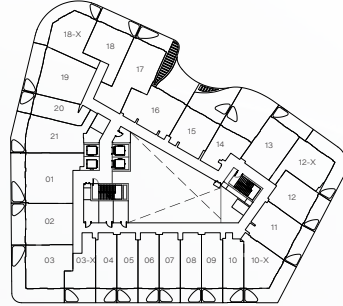
# 2 BEDROOM

UNIT 17 | TYPICAL UNIT TYPE 02

LEVELS 1 - 4 & 11 - 13  
FLOOR PLATE



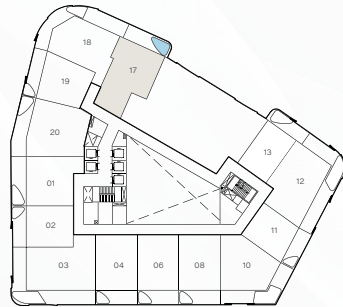
LEVELS 5 TO 10  
FLOOR PLATE



LEVEL 14  
FLOOR PLATE



LEVELS 15  
FLOOR PLATE



TOTAL AREA  
1,420.51 sq.ft.  
131.97 sq.m.

TOTAL INTERNAL AREA  
1,172.73 sq.ft.  
108.95 sq.m.

TOTAL EXTERNAL AREA  
247.79 sq.ft.  
23.02 sq.m.



DISCLAIMER

All plans and 3D visualizations are based on conceptual design and are shown for illustration purposes only. Unit layouts are indicative, not to scale, and subject to change without prior notice. All dimensions, if shown, are approximate and exclude all wall finishes and construction tolerances. Furnishings & accessories shown are for representation only. The final built-up areas may vary from the official measurements issued by the 3rd party survey company accredited by the Dubai land department. The developer reserves the right to make any changes on any part of this document if & when they deem necessary.

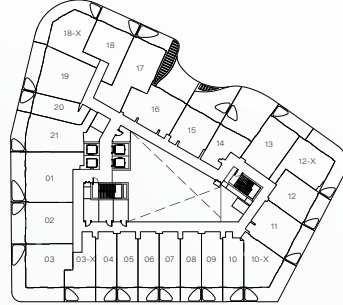
# 2 BEDROOM

UNIT 17 | UNIT TYPE 5A

LEVELS 1 - 4 & 11 - 13  
FLOOR PLATE



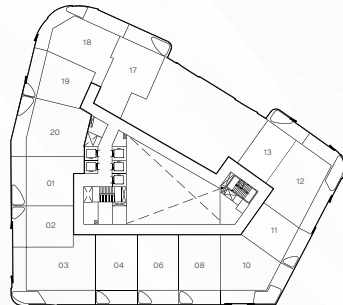
LEVELS 5 TO 10  
FLOOR PLATE



LEVEL 14  
FLOOR PLATE



LEVELS 15  
FLOOR PLATE



TOTAL AREA  
1,426.86 sq.ft.  
132.56 sq.m.

TOTAL INTERNAL AREA  
895.02 sq.ft.  
83.15 sq.m.

TOTAL EXTERNAL AREA  
531.84 sq.ft.  
49.41 sq.m.



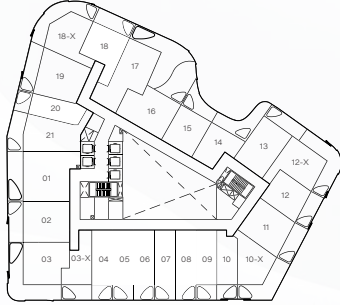
**DISCLAIMER**

All plans and 3D visualizations are based on conceptual design and are shown for illustration purposes only. Unit layouts are indicative, not to scale, and subject to change without prior notice. All dimensions, if shown, are approximate and exclude all wall finishes and construction tolerances. Furnishings & accessories shown are for representation only. The final built-up areas may vary from the official measurements issued by the 3rd party survey company accredited by the Dubai land department. The developer reserves the right to make any changes on any part of this document if & when they deem necessary.

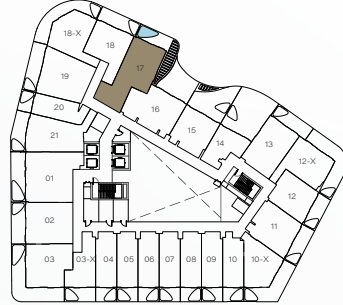
# 2 BEDROOM

UNIT 17 | UNIT TYPE 5B

LEVELS 1 - 4 & 11 - 13  
FLOOR PLATE



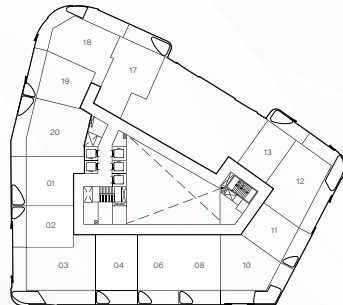
LEVELS 5 TO 10  
FLOOR PLATE



LEVEL 14  
FLOOR PLATE



LEVELS 15  
FLOOR PLATE



TOTAL AREA  
1,262.07 sq.ft.  
117.25 sq.m.

TOTAL INTERNAL AREA  
895.02 sq.ft.  
83.15 sq.m.

TOTAL EXTERNAL AREA  
367.05 sq.ft.  
34.10 sq.m.

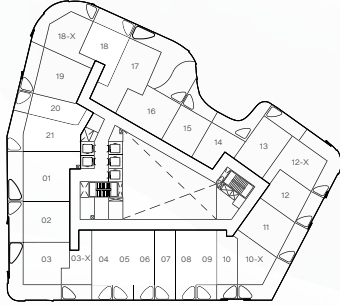
## DISCLAIMER

All plans and 3D visualizations are based on conceptual design and are shown for illustration purposes only. Unit layouts are indicative, not to scale, and subject to change without prior notice. All dimensions, if shown, are approximate and exclude all wall finishes and construction tolerances. Furnishings & accessories shown are for representation only. The final built-up areas may vary from the official measurements issued by the 3rd party survey company accredited by the Dubai land department. The developer reserves the right to make any changes on any part of this document if & when they deem necessary.

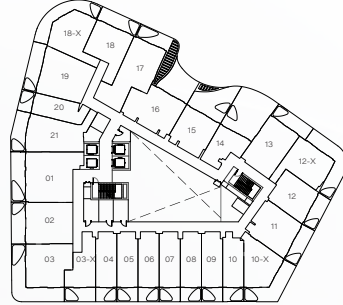
# 2 BEDROOM

UNIT 20 | TYPICAL UNIT TYPE 03

LEVELS 1 - 4 & 11 - 13  
FLOOR PLATE



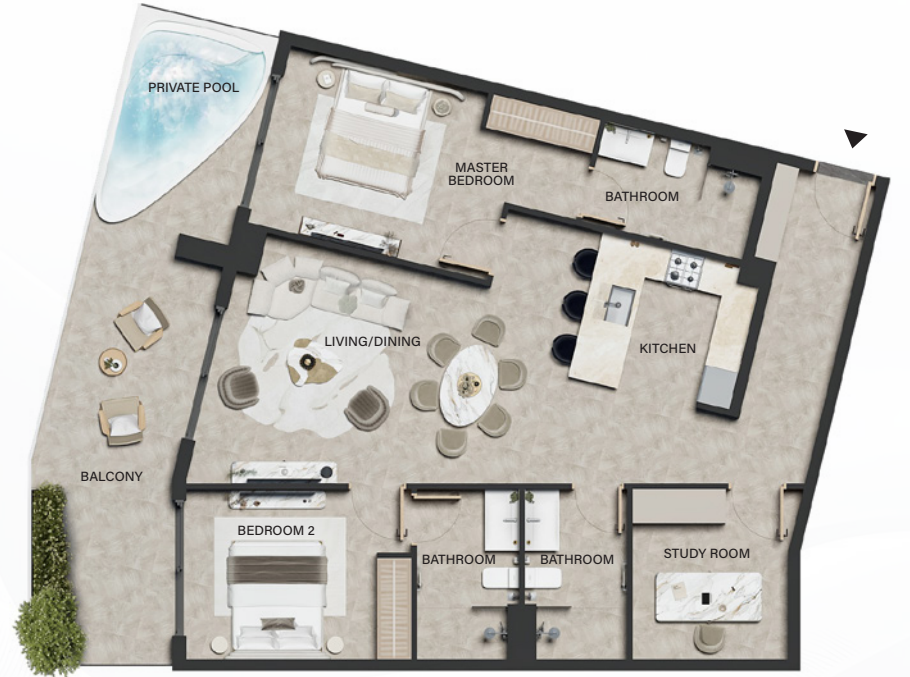
LEVELS 5 TO 10  
FLOOR PLATE



LEVEL 14  
FLOOR PLATE



LEVELS 15  
FLOOR PLATE



TOTAL AREA  
1,471.10 sq.ft.  
136.67 sq.m.

TOTAL INTERNAL AREA  
1,144.31 sq.ft.  
106.31 sq.m.

TOTAL EXTERNAL AREA  
326.79 sq.ft.  
30.36 sq.m.

## DISCLAIMER

All plans and 3D visualizations are based on conceptual design and are shown for illustration purposes only. Unit layouts are indicative, not to scale, and subject to change without prior notice. All dimensions, if shown, are approximate and exclude all wall finishes and construction tolerances. Furnishings & accessories shown are for representation only. The final built-up areas may vary from the official measurements issued by the 3rd party survey company accredited by the Dubai land department. The developer reserves the right to make any changes on any part of this document if & when they deem necessary.



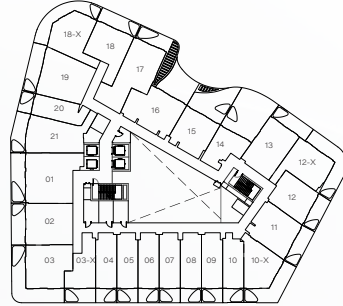
# 3 BEDROOM

UNIT 10 | TYPICAL UNIT TYPE 01

LEVELS 1 - 4 & 11 - 13  
FLOOR PLATE



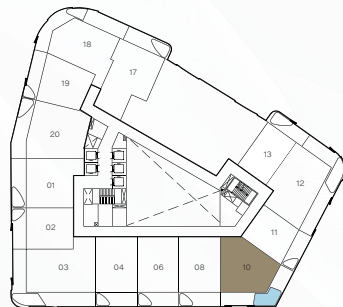
LEVELS 5 TO 10  
FLOOR PLATE



LEVEL 14  
FLOOR PLATE



LEVELS 15  
FLOOR PLATE



TOTAL AREA  
1,429.23 sq.ft.  
132.78 sq.m.

TOTAL INTERNAL AREA  
976.50 sq.ft.  
90.72 sq.m.

TOTAL EXTERNAL AREA  
452.73 sq.ft.  
42.06 sq.m.

## DISCLAIMER

All plans and 3D visualizations are based on conceptual design and are shown for illustration purposes only. Unit layouts are indicative, not to scale, and subject to change without prior notice. All dimensions, if shown, are approximate and exclude all wall finishes and construction tolerances. Furnishings & accessories shown are for representation only. The final built-up areas may vary from the official measurements issued by the 3rd party survey company accredited by the Dubai land department. The developer reserves the right to make any changes on any part of this document if & when they deem necessary.

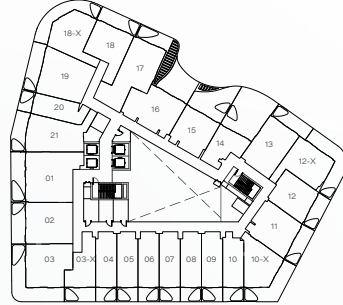
# 3 BEDROOM

UNIT 18 | TYPICAL UNIT TYPE 02

LEVELS 1 - 4 & 11 - 13  
FLOOR PLATE



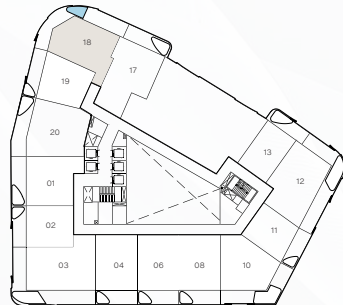
LEVELS 5 TO 10  
FLOOR PLATE



LEVEL 14  
FLOOR PLATE



LEVELS 15  
FLOOR PLATE



TOTAL AREA  
1,557.54 sq.ft.  
144.70 sq.m.

TOTAL INTERNAL AREA  
1,030.97 sq.ft.  
95.78 sq.m.

TOTAL EXTERNAL AREA  
526.57 sq.ft.  
48.92 sq.m.

DISCLAIMER

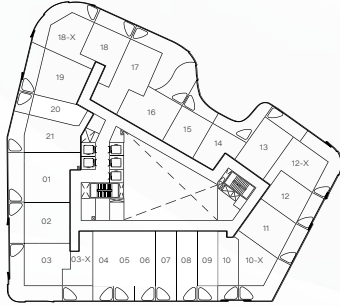
All plans and 3D visualizations are based on conceptual design and are shown for illustration purposes only. Unit layouts are indicative, not to scale, and subject to change without prior notice. All dimensions, if shown, are approximate and exclude all wall finishes and construction tolerances. Furnishings & accessories shown are for representation only. The final built-up areas may vary from the official measurements issued by the 3rd party survey company accredited by the Dubai land department. The developer reserves the right to make any changes on any part of this document if & when they deem necessary.



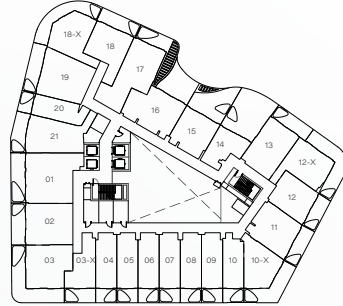
# 4 BEDROOM SKY VILLAS

## UNIT 03 | TYPICAL UNIT TYPE 01

LEVELS 1 - 4 & 11 - 13  
FLOOR PLATE



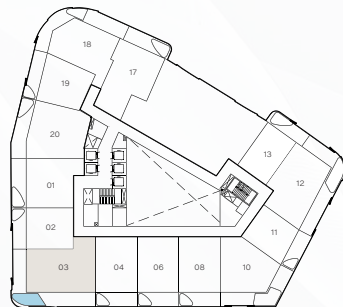
LEVELS 5 TO 10  
FLOOR PLATE



LEVEL 14  
FLOOR PLATE



LEVELS 15  
FLOOR PLATE



TOTAL AREA  
1,844.50 sq.ft.  
171.36 sq.m.

TOTAL INTERNAL AREA  
1,212.45 sq.ft.  
112.64 sq.m.

TOTAL EXTERNAL AREA  
632.06 sq.ft.  
58.72 sq.m.

DISCLAIMER

All plans and 3D visualizations are based on conceptual design and are shown for illustration purposes only. Unit layouts are indicative, not to scale, and subject to change without prior notice. All dimensions, if shown, are approximate and exclude all wall finishes and construction tolerances. Furnishings & accessories shown are for representation only. The final built-up areas may vary from the official measurements issued by the 3rd party survey company accredited by the Dubai land department. The developer reserves the right to make any changes on any part of this document if & when they deem necessary.

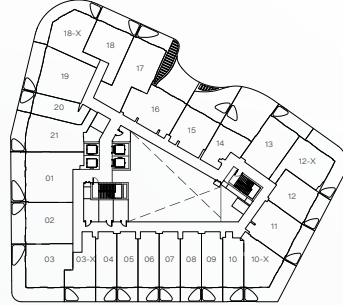
# 4 BEDROOM SKY VILLAS

## UNIT 12 | TYPICAL UNIT TYPE 02

LEVELS 1 - 4 & 11 - 13  
FLOOR PLATE



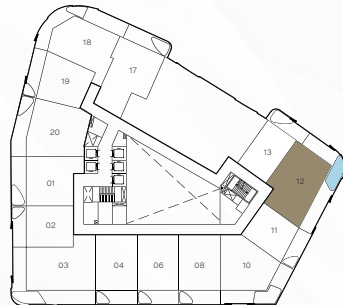
LEVELS 5 TO 10  
FLOOR PLATE



LEVEL 14  
FLOOR PLATE



LEVELS 15  
FLOOR PLATE



TOTAL AREA  
1,797.90 sq.ft.  
167.03 sq.m.

TOTAL INTERNAL AREA  
1,191.78 sq.ft.  
110.72 sq.m.

TOTAL EXTERNAL AREA  
606.12 sq.ft.  
56.31 sq.m.



DISCLAIMER

All plans and 3D visualizations are based on conceptual design and are shown for illustration purposes only. Unit layouts are indicative, not to scale, and subject to change without prior notice. All dimensions, if shown, are approximate and exclude all wall finishes and construction tolerances. Furnishings & accessories shown are for representation only. The final built-up areas may vary from the official measurements issued by the 3rd party survey company accredited by the Dubai land department. The developer reserves the right to make any changes on any part of this document if & when they deem necessary.



DESIGNED BY  
**LUD STUDIOS**

Weybridge Gardens 4, has been meticulously designed and created by British born design and engineering consultancy, LUD Studios.

LUD Studios is dedicated to creating innovative buildings which are contextually inspired, environmentally sustainable and enhance the quality of life for residents.

With a strong focus on design and sustainability, LUD Studios embraces new challenges and the opportunity to re-define design and construction methodologies to create award-winning architectural design and innovative living spaces.

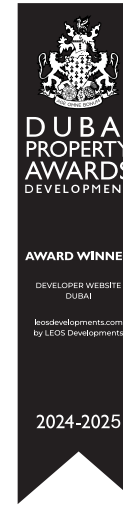




# INTERNATIONAL AWARDS

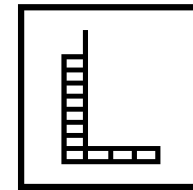
Established in 2013, LEOS is a renowned luxury property developer with a strong presence in the UK, the UAE and internationally. LEOS is committed to defining the art of living through high-level and innovative design, architecture and development. Experts in residential, commercial and mixed-use real estate, LEOS' professional scope spans land sourcing and analysis, funding, development management, construction, sales and asset management.

Our well-versed and adept team are passionate about quality and on-time delivery and are on hand to deliver best in class projects both locally and internationally. LEOS prides itself on being highly collaborative in building transparent and trustworthy relationships with individuals and businesses to deliver its shared vision and unlock social, economic and commercial value for our stakeholders and clients.



#### DISCLAIMER

All plans and 3D visualizations are based on conceptual design and are shown for illustration purposes only. Unit layouts are indicative, not to scale, and subject to change without prior notice. All dimensions, if shown, are approximate and exclude all wall finishes and construction tolerances. Furnishings & accessories shown are for representation only. The final built-up areas may vary from the official measurements issued by the 3rd party survey company accredited by the Dubai land department. The developer reserves the right to make any changes on any part of this document if & when they deem necessary.



**LEOS**  
INTERNATIONAL



OFFICIAL PARTNER OF  
**AFC BOURNEMOUTH**  
PREMIER LEAGUE

# WEYBRIDGE GARDENS 4

KENSINGTON EDITION

UAE TOLL-FREE 800 535

[WWW.LEOSDEVELOPMENTS.COM](http://WWW.LEOSDEVELOPMENTS.COM)



LEOS