

# floareá *Skies*

A Life Painted in Pastel Horizons



MASHRIQ ELITE  
DEVELOPMENTS

# A Sky High *Standard* of Living

Floareá Skies, an upcoming residential project by Mashriq Elite Developments, is poised to redefine the landscape of luxury living. With a focus on superior craftsmanship and innovative design, Floareá Skies represents the pinnacle of elegance and sophistication. As our fourth venture, this project embodies our dedication to delivering the highest standards of living, creating an unmatched experience that will set a new benchmark in the industry.



MASHRIQ ELITE  
DEVELOPMENTS

# *floarea Skies*

Studio, 1 & 2 Bedroom  
Apartments



# 1st Floor Amenities

---

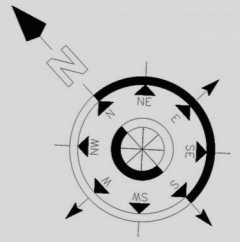


# Roof Amenities

---



# First Floor



*floarea  
Skies*

**800 MASHRIQ**  
62 74 747

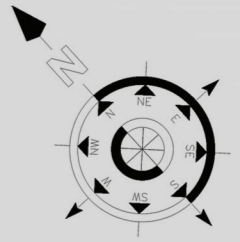
sales@mashriqelite.com  
www.mashriqelite.com

**Disclaimer:**

All pictures, plans, layouts, information, data, dimensions and details included in this floor plan are indicative only and may change at any time up to the final 'as built' status in accordance with final designs of the project, regulatory approvals and planning permissions.



MASHRIQ ELITE  
DEVELOPMENTS



# Typical Floor Plan

---

## 2nd, 3rd & 4th



800 MASHRIQ  
62 74 747

sales@mashriqelite.com  
www.mashriqelite.com

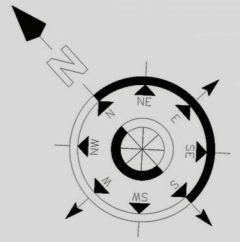
*floarea  
Skies*

**Disclaimer:**

All pictures, plans, layouts, information, data, dimensions and details included in this floor plan are indicative only and may change at any time up to the final 'as built' status in accordance with final designs of the project, regulatory approvals and planning permissions.



MASHRIQ ELITE  
DEVELOPMENTS



# Typical Floor Plan

---

## 5th, 6th & 7th



800 MASHRIQ  
62 74 747

sales@mashriqelite.com  
www.mashriqelite.com

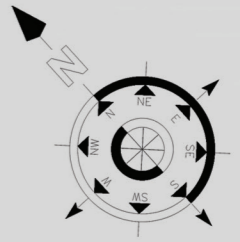
*floarea  
Skies*

**Disclaimer:**

All pictures, plans, layouts, information, data, dimensions and details included in this floor plan are indicative only and may change at any time up to the final 'as built' status in accordance with final designs of the project, regulatory approvals and planning permissions.



MASHRIQ ELITE  
DEVELOPMENTS



# Typical Floor Plan

8th, 9th, 10th & 11th



800 MASHRIQ  
62 74 747

sales@mashriqelite.com  
www.mashriqelite.com

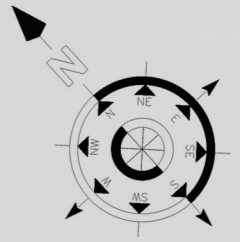
*floarea  
Skies*

**Disclaimer:**

All pictures, plans, layouts, information, data, dimensions and details included in this floor plan are indicative only and may change at any time up to the final 'as built' status in accordance with final designs of the project, regulatory approvals and planning permissions.



MASHRIQ ELITE  
DEVELOPMENTS



# Typical Floor Plan

---

12th, 13th, 14th  
& 18th



800 MASHRIQ  
62 74 747

sales@mashriqelite.com  
www.mashriqelite.com

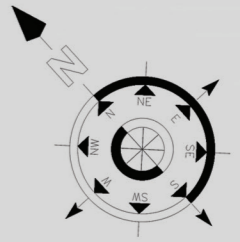
*floarea  
Skies*

**Disclaimer:**

All pictures, plans, layouts, information, data, dimensions and details included in this floor plan are indicative only and may change at any time up to the final 'as built' status in accordance with final designs of the project, regulatory approvals and planning permissions.



MASHRIQ ELITE  
DEVELOPMENTS



# Typical Floor Plan

---

## 15th, 16th & 17th



**800 MASHRIQ**  
62 74 747  
sales@mashriqelite.com  
www.mashriqelite.com

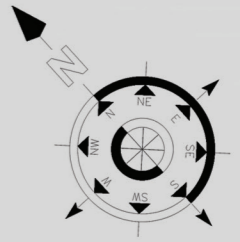
*floarea  
Skies*

**Disclaimer:**

All pictures, plans, layouts, information, data, dimensions and details included in this floor plan are indicative only and may change at any time up to the final 'as built' status in accordance with final designs of the project, regulatory approvals and planning permissions.



**MASHRIQ ELITE**  
DEVELOPMENTS



# Typical Floor Plan

19th



*floarea  
Skies*

**800 MASHRIQ**  
62 74 747

sales@mashriqelite.com  
www.mashriqelite.com

**Disclaimer:**

All pictures, plans, layouts, information, data, dimensions and details included in this floor plan are indicative only and may change at any time up to the final 'as built' status in accordance with final designs of the project, regulatory approvals and planning permissions.

# Studio

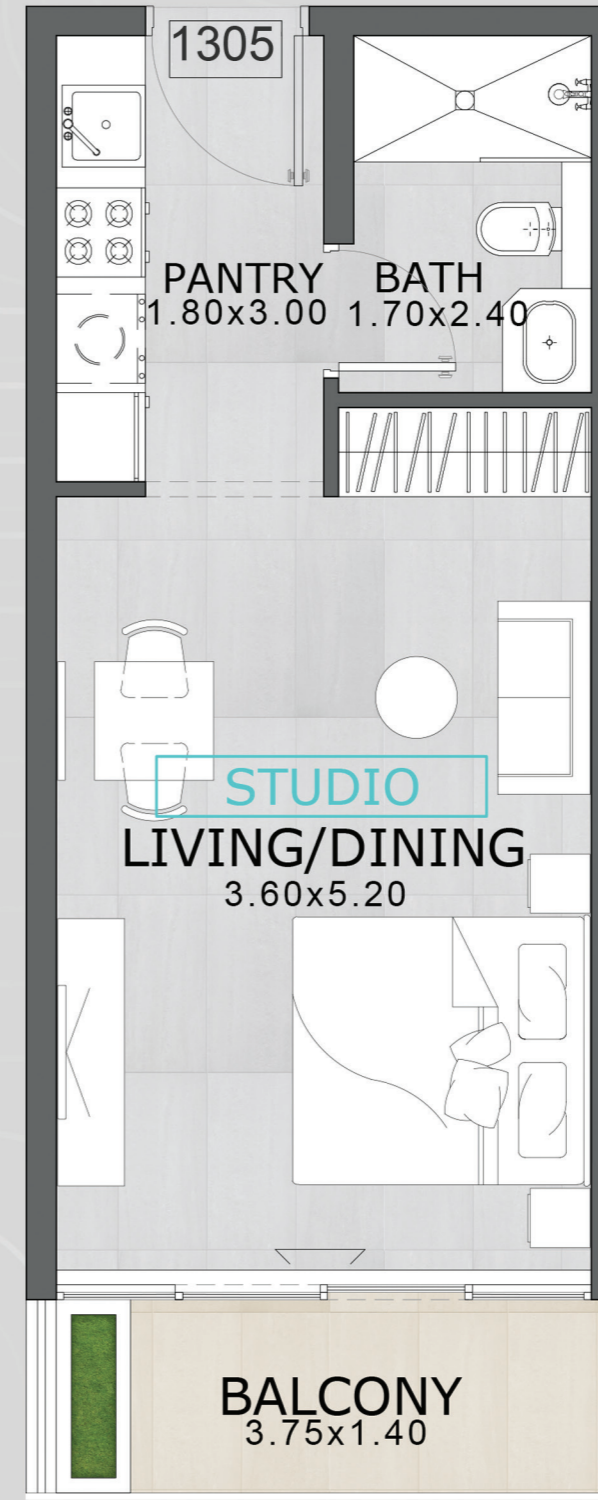
Embark on a journey of refined living with our meticulously crafted floor plans, designed to harmonize elegance with functionality.

## Studio Apartment - Standard Type



SUITE AREA	348 SQ.FT
TERRACE AREA	50 SQ.FT
TOTAL AREA	398 SQ.FT

floarea  
Skies



**Disclaimer:**

All pictures, plans, layouts, information, data, dimensions and details included in this floor plan are indicative only and may change at any time up to the final 'as built' status in accordance with final designs of the project, regulatory approvals and planning permissions.

# 1 BEDROOM

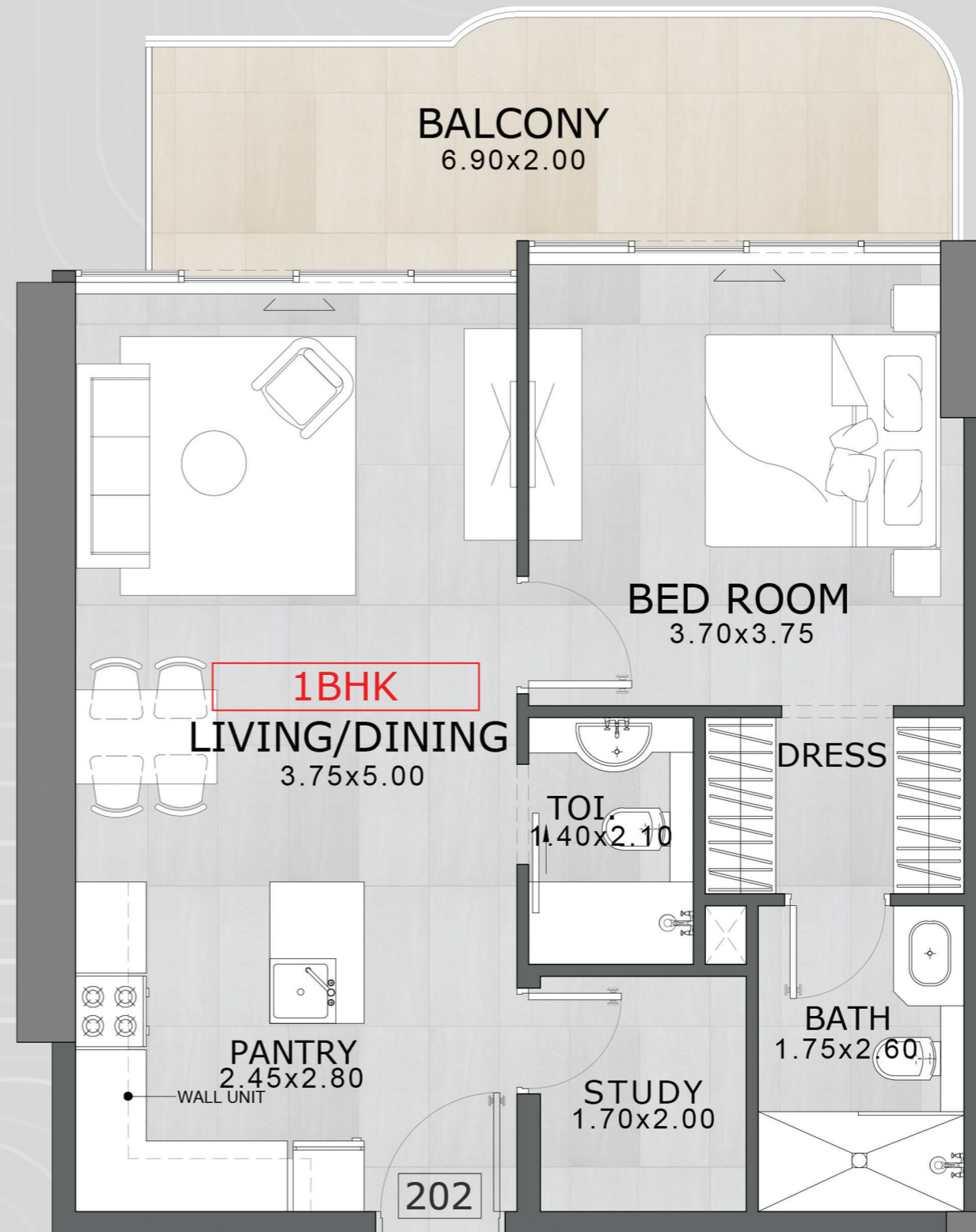
Embark on a journey of refined living with our meticulously crafted floor plans, designed to harmonize elegance with functionality.

## 1 BED ROOM WITH STUDY - TYPE A



SUITE AREA	684 SQ.FT
TERRACE AREA	149 SQ.FT
TOTAL AREA	833 SQ.FT

*floarea  
Skies*



**Disclaimer:**

All pictures, plans, layouts, information, data, dimensions and details included in this floor plan are indicative only and may change at any time up to the final 'as built' status in accordance with final designs of the project, regulatory approvals and planning permissions.

# 1 BEDROOM

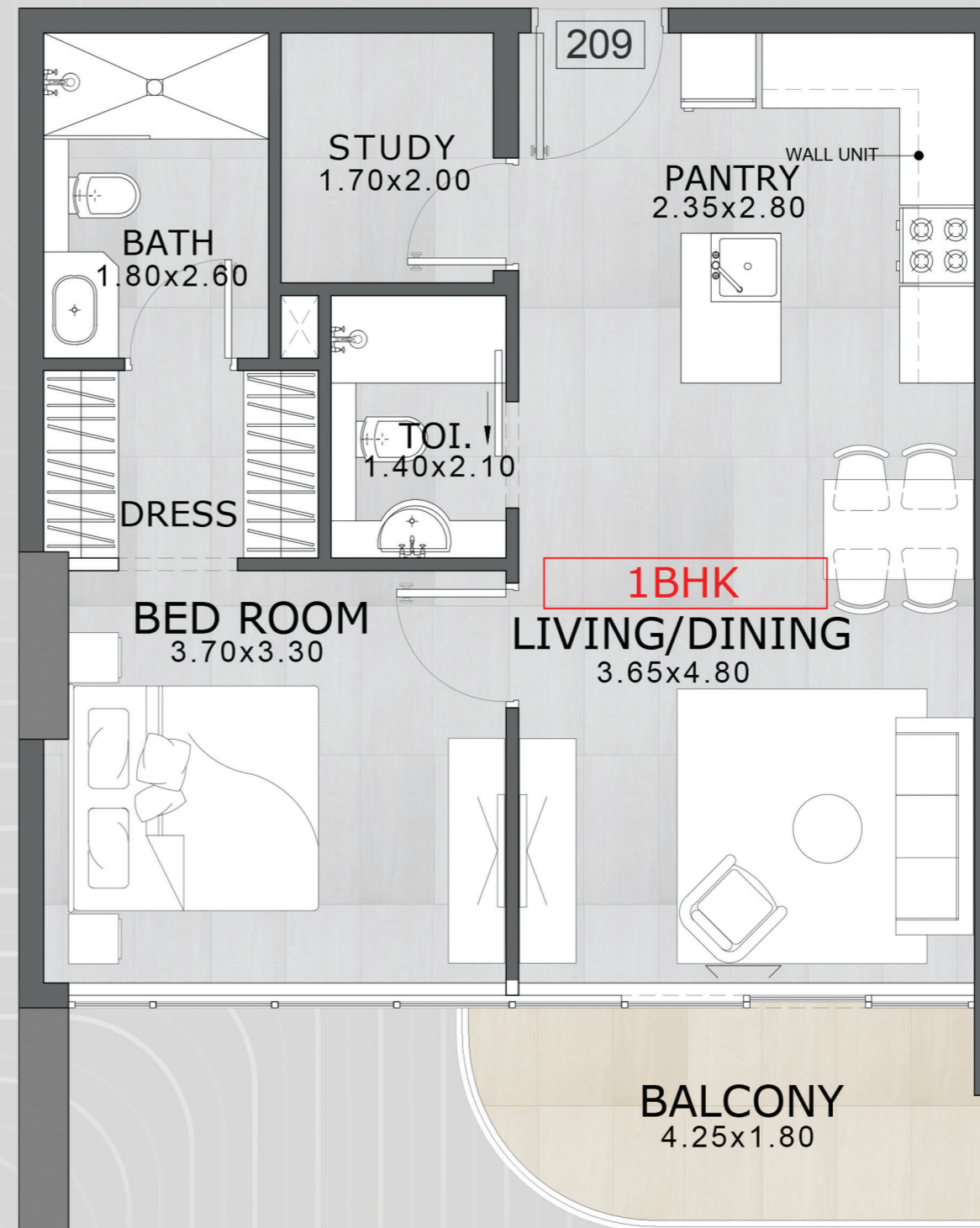
Embark on a journey of refined living with our meticulously crafted floor plans, designed to harmonize elegance with functionality.

## 1 BED ROOM WITH STUDY - TYPE B



SUITE AREA	640 SQ.FT
TERRACE AREA	77 SQ.FT
TOTAL AREA	717 SQ.FT

*floarea*  
*Skies*



**Disclaimer:**

All pictures, plans, layouts, information, data, dimensions and details included in this floor plan are indicative only and may change at any time up to the final 'as built' status in accordance with final designs of the project, regulatory approvals and planning permissions.

# 1 BEDROOM

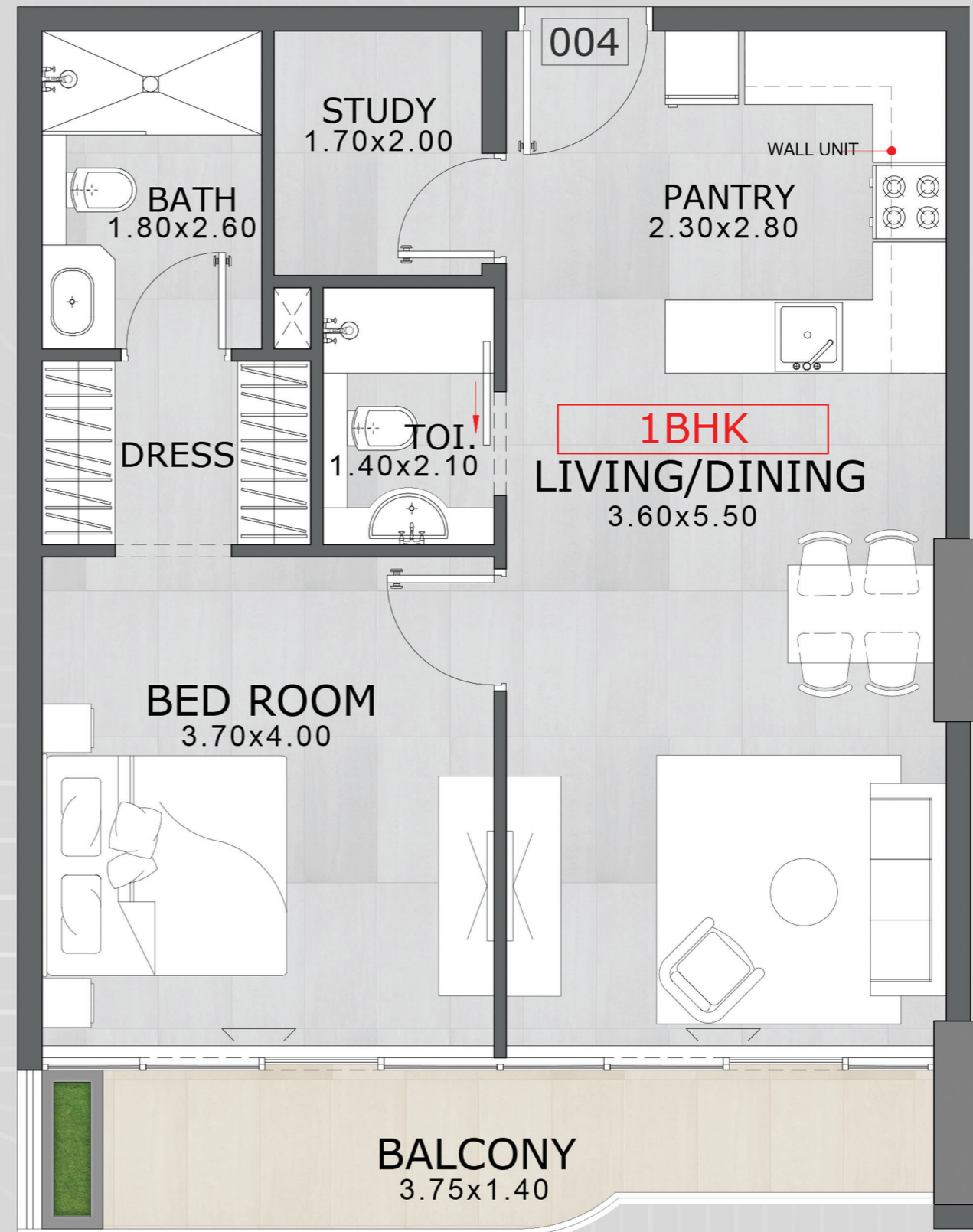
Embark on a journey of refined living with our meticulously crafted floor plans, designed to harmonize elegance with functionality.

## 1 BED ROOM WITH STUDY - TYPE C



SUITE AREA	693 SQ.FT
TERRACE AREA	108 SQ.FT
TOTAL AREA	801 SQ.FT

floarea  
Skies



**Disclaimer:**

All pictures, plans, layouts, information, data, dimensions and details included in this floor plan are indicative only and may change at any time up to the final 'as built' status in accordance with final designs of the project, regulatory approvals and planning permissions.

# 1 BEDROOM

Embark on a journey of refined living with our meticulously crafted floor plans, designed to harmonize elegance with functionality.

## 1 BED ROOM - TYPE D



SUITE AREA	673 SQ.FT
TERRACE AREA	163 SQ.FT
TOTAL AREA	836 SQ.FT

*floarea*  
*Skies*



**Disclaimer:**

All pictures, plans, layouts, information, data, dimensions and details included in this floor plan are indicative only and may change at any time up to the final 'as built' status in accordance with final designs of the project, regulatory approvals and planning permissions.

# *Seamless Comfort:* Where Elegance Meets Practicality

Where Elegance Meets Practicality These exquisite spaces are a harmonious blend of style and functionality, inviting you to immerse yourself in a world of comfort. The well-defined living areas effortlessly connect, creating an ambiance of openness and fluidity. From the inviting living room to the private bedroom sanctuary, each corner is a testament to meticulous design. Natural light streams through generous windows, highlighting contemporary finishes that exude timeless elegance.

Whether you're a young professional, a couple, or someone seeking a refined abode, Floareá's Apartments offer an urban oasis where tranquility and luxury intertwine. Elevate your lifestyle and relish in the art of gracious living within these thoughtfully crafted residences, where every detail is curated to enhance your everyday experience

# 2 BEDROOM

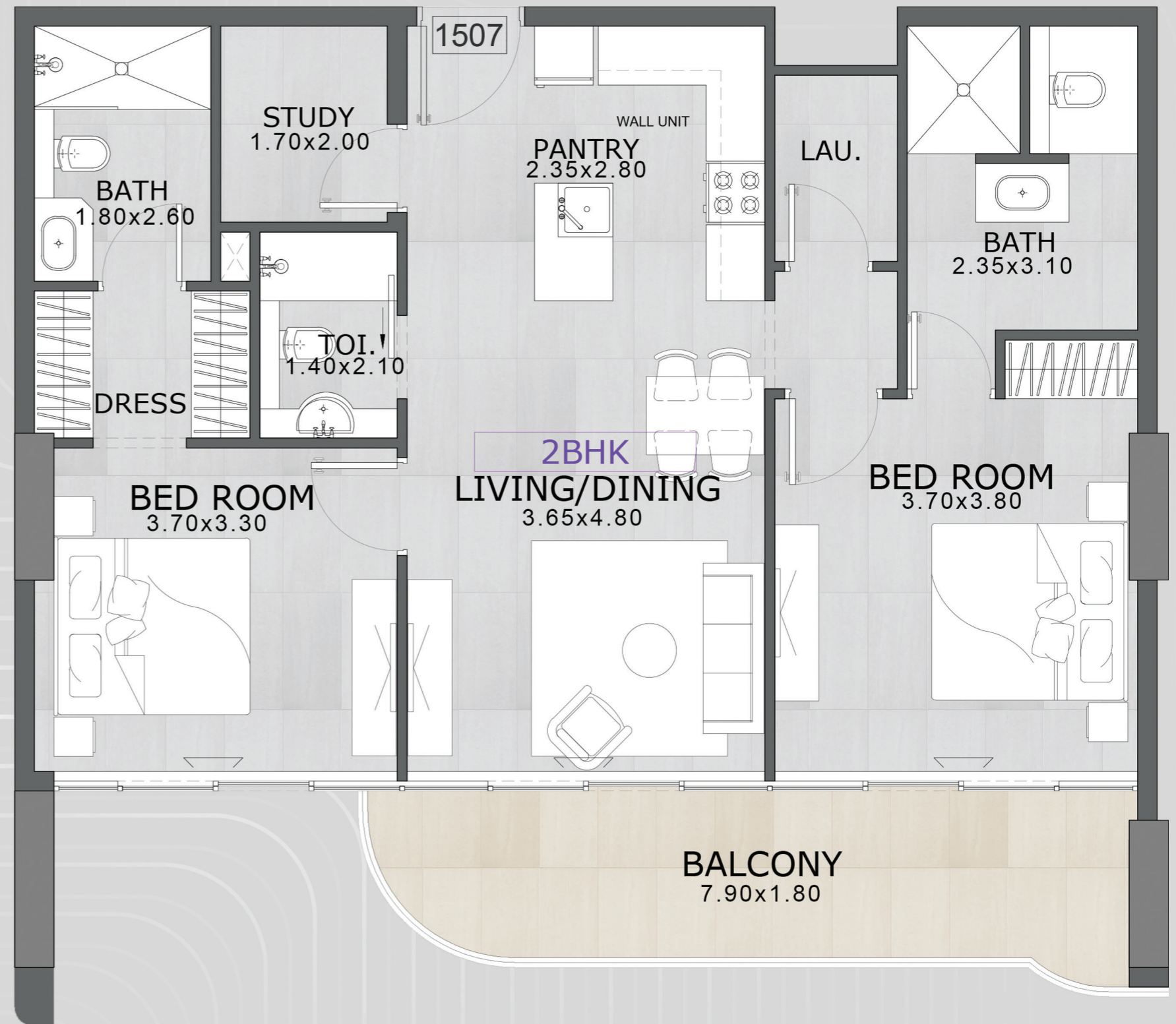
Embark on a journey of refined living with our meticulously crafted floor plans, designed to harmonize elegance with functionality.

## 2 BED ROOM WITH STUDY - TYPE B



SUITE AREA	951 SQ.FT
TERRACE AREA	154 SQ.FT
TOTAL AREA	1105 SQ.FT

*floarea*  
*Skies*



**Disclaimer:**

All pictures, plans, layouts, information, data, dimensions and details included in this floor plan are indicative only and may change at any time up to the final 'as built' status in accordance with final designs of the project, regulatory approvals and planning permissions.

# 2 BEDROOM

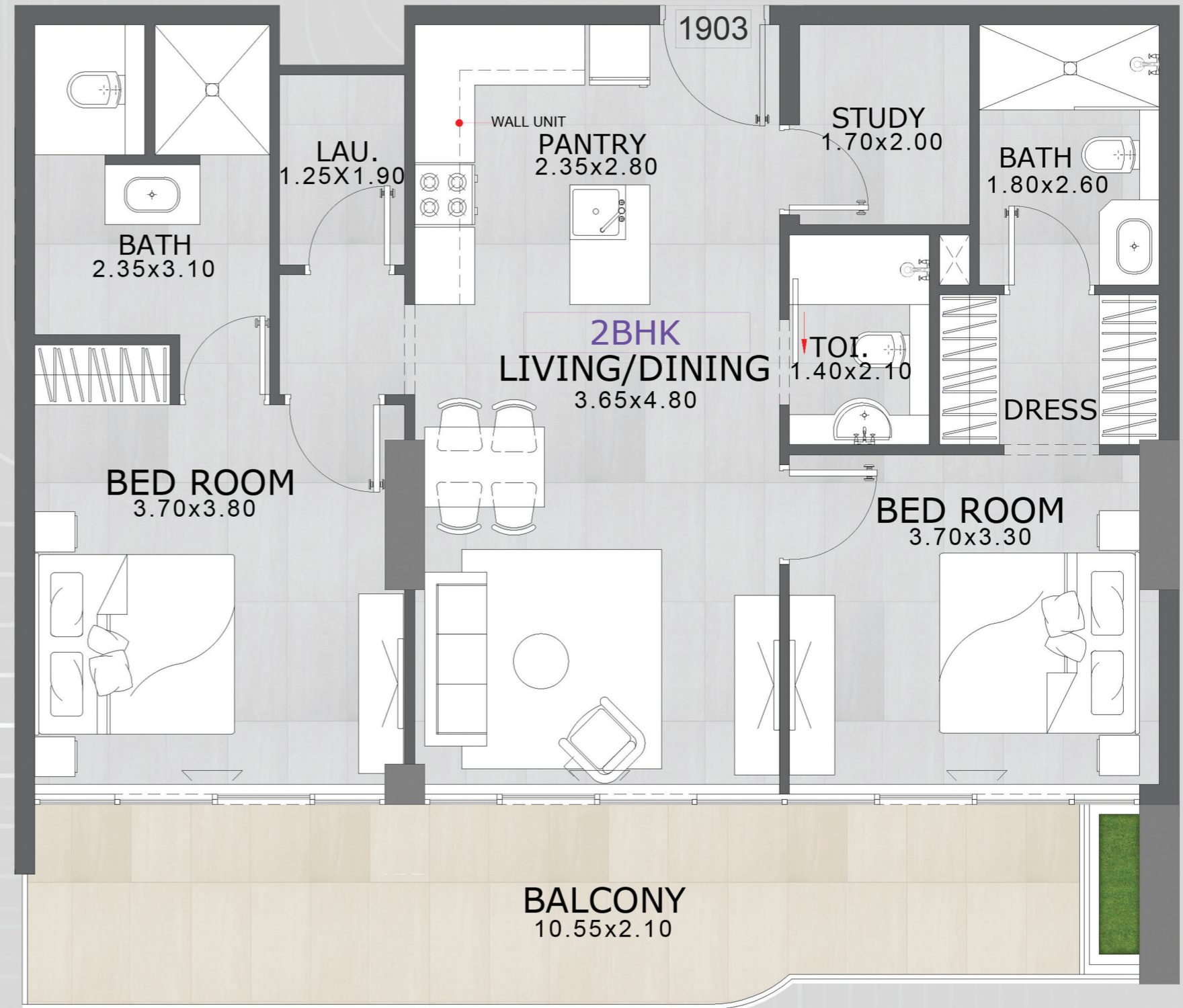
Embark on a journey of refined living with our meticulously crafted floor plans, designed to harmonize elegance with functionality.

## 2 BED ROOM WITH STUDY - TYPE A



SUITE AREA	951 SQ.FT
TERRACE AREA	219 SQ.FT
TOTAL AREA	1170 SQ.FT

*floarea*  
*Skies*



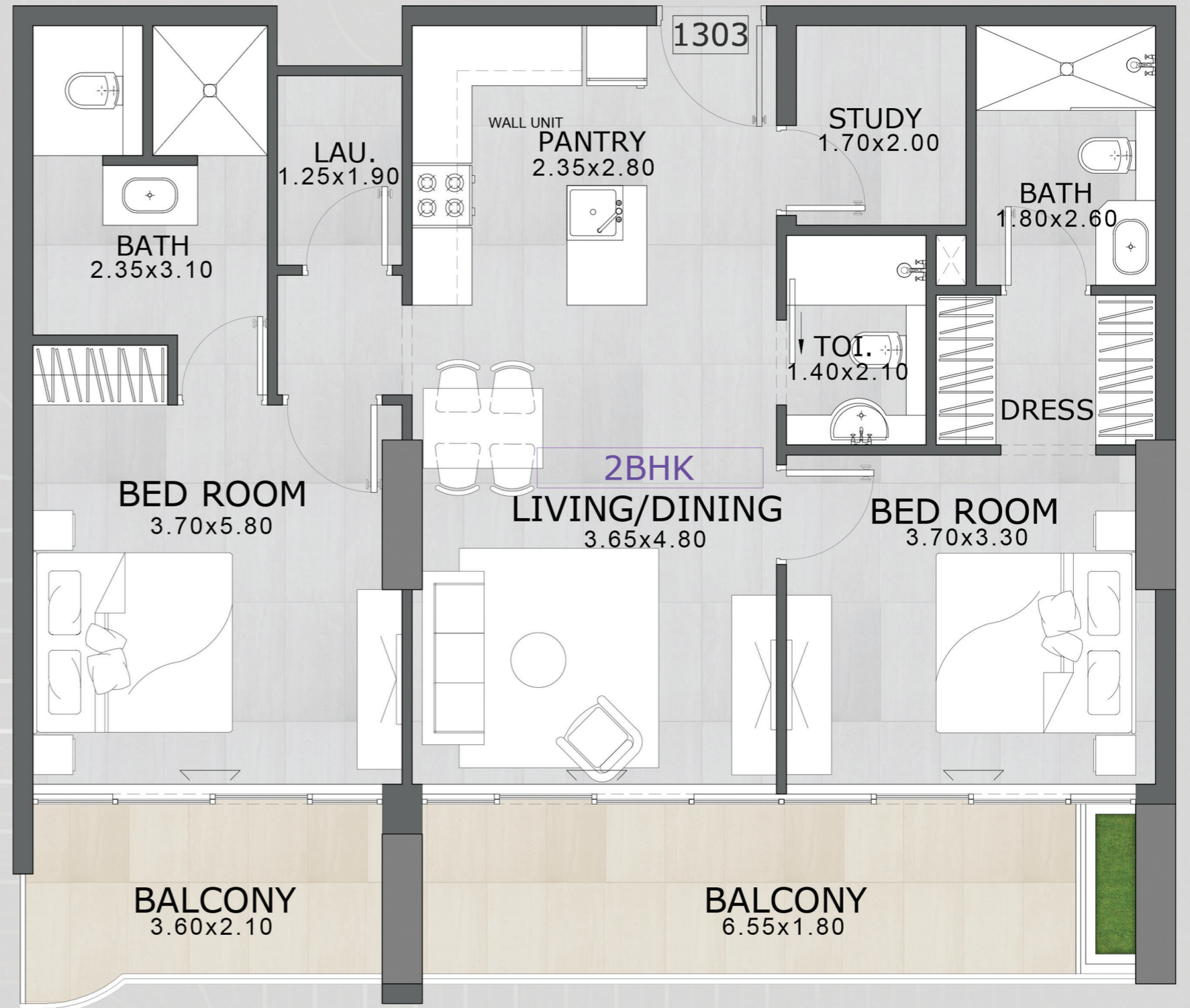
**Disclaimer:**

All pictures, plans, layouts, information, data, dimensions and details included in this floor plan are indicative only and may change at any time up to the final 'as built' status in accordance with final designs of the project, regulatory approvals and planning permissions.

# 2 BEDROOM

Embark on a journey of refined living with our meticulously crafted floor plans, designed to harmonize elegance with functionality.

## 2 BED ROOM WITH STUDY - TYPE A1



SUITE AREA	951 SQ.FT
TERRACE AREA	219 SQ.FT
TOTAL AREA	1170 SQ.FT

**Disclaimer:**

All pictures, plans, layouts, information, data, dimensions and details included in this floor plan are indicative only and may change at any time up to the final 'as built' status in accordance with final designs of the project, regulatory approvals and planning permissions.

**Dubai  
Media City**  
(10minutes)

**Dubai Marina**  
(15 minutes)

**Dubai  
Internet City**  
(10 minutes)

**Mall of the Emirates**  
(15 minutes)

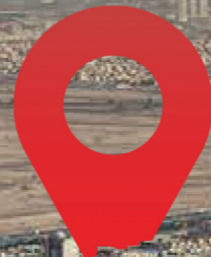
**Burj Al Arab**  
(15 minutes)

**Downtown Dubai**  
(25minutes)

**Business Bay**  
(25 minutes)

**Dubai Mall**  
(25 minutes)

*floareá  
Skies*



- 1 Business Bay
- 2 Sheikh Zayed Road
- 3 Al Khail Road
- 4 Dubai Hills
- 5 Umm Suqeim
- 6 Mall of the Emirates
- 7 Burj Al Arab
- 8 Hessa Street
- 9 Arjan
- 10 Dubai Marina
- 11 Jumeirah Lake Towers
- 12 Jumeirah Islands
- 13 Discovery Gardens
- 14 Dubai Sports City
- 15 Jumeirah Golf Estates
- 16 Dubai Butterfly Garden and Miracle Garden
- 17 Dubai Autodrome
- 18 Dubai Studio City
- 19 Sheikh Muhammad Bin Zayed Road

# *floareá* *Skies*

Jumeirah Village Circle





**MASHRIQ ELITE**  
— DEVELOPMENTS —

Developing  
*Elite* Lifestyles

**800** MASHRIQ  
62 74 747

[sales@mashriqelite.com](mailto:sales@mashriqelite.com) | [www.mashriqelite.com](http://www.mashriqelite.com)

2904, West Burry Business Tower, Business Bay, Dubai