



marlin

— AL REEM ISLAND —



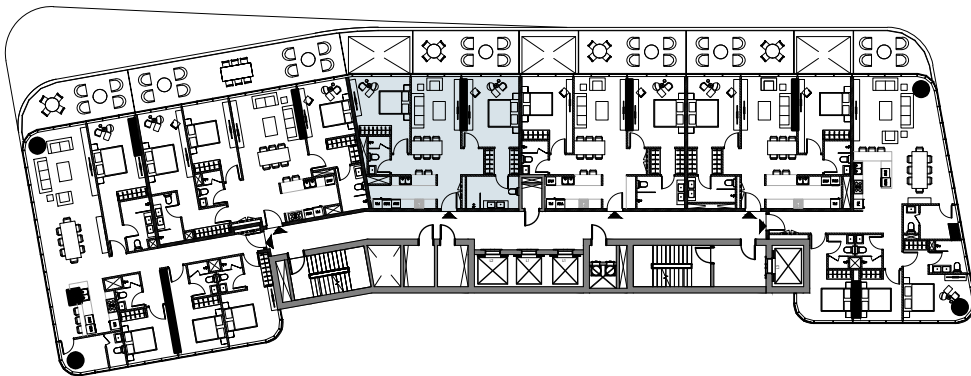
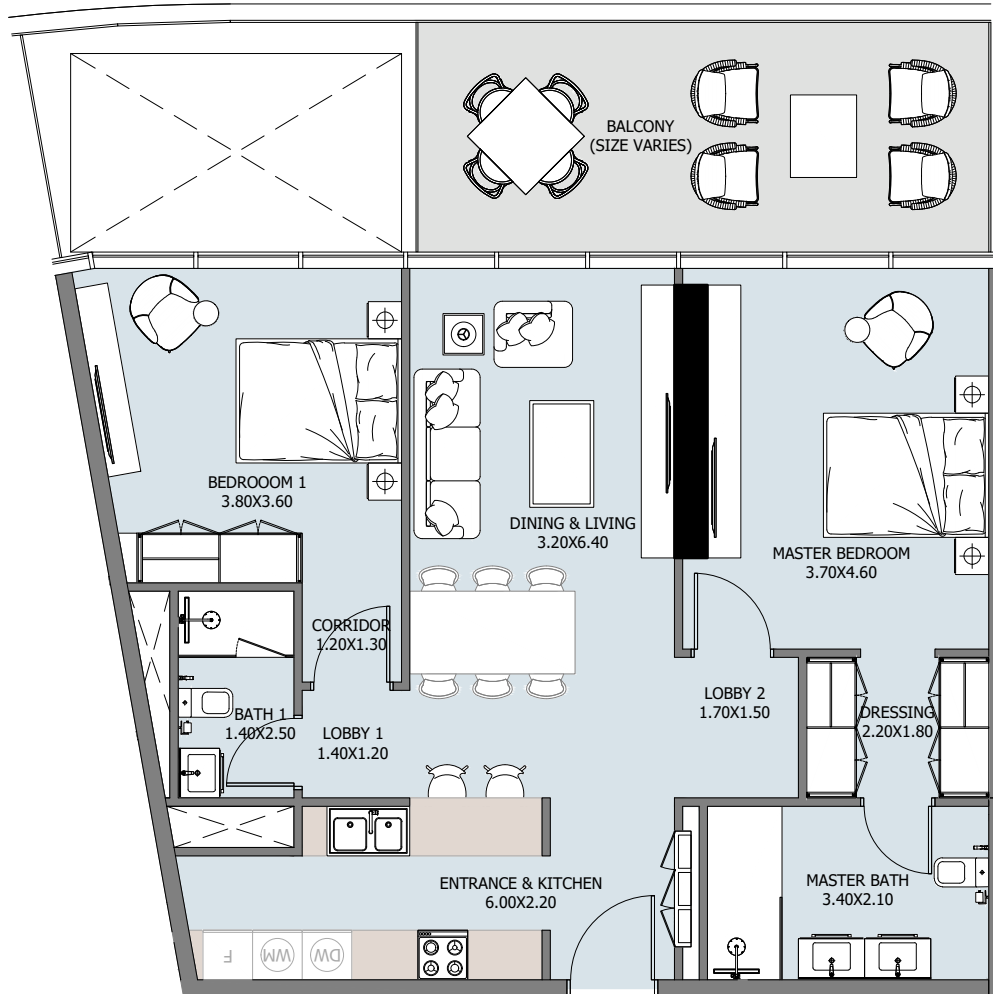
# UNIT TYPES

All drawings and dimensions are approximate. Drawings are not to scale and are subject to change without notice. The developer reserves the right to make revisions. The units are measured at typical floors in the building and columns may vary in size depending on the floor level. The furnishing and accessories shown are for representation only. The availability, length and width of the balcony varies depending on which floor and which orientation the unit is located within the building. There will be slight differences in the internal areas between the same unit types depending on the shaft sizes that go through the units.



# 2B TYPE A

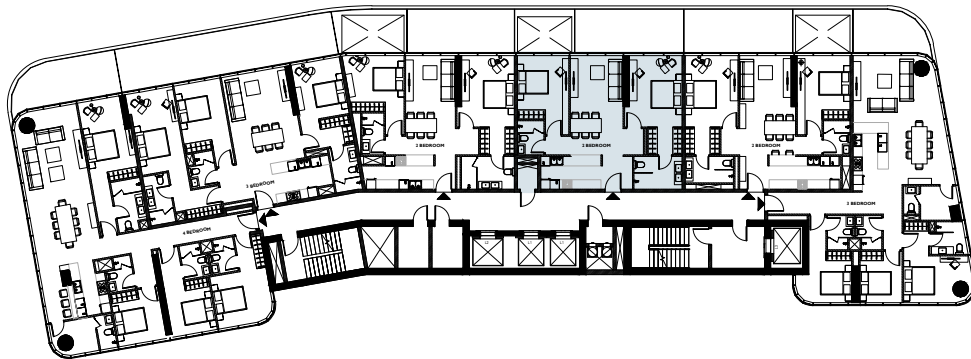
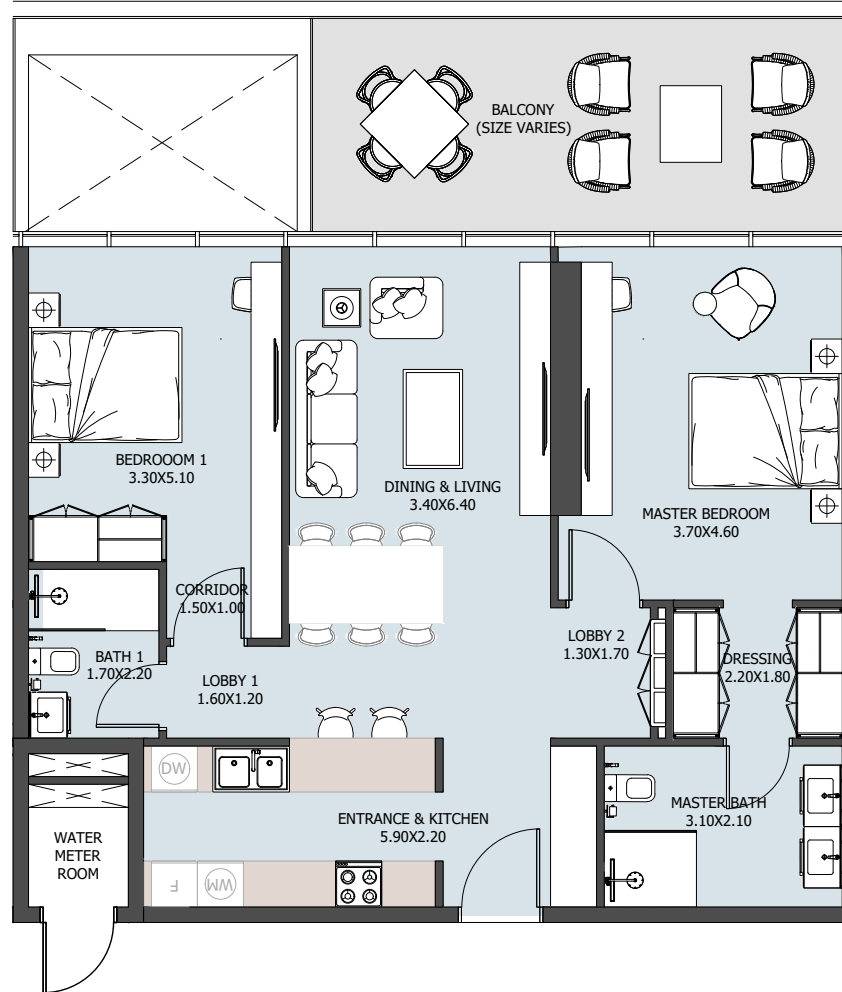
TYPICAL FLOOR



Internal Area	965.20 sq.ft
Outdoor Area	209.47 sq.ft
Total Area	1174.67 sq.ft

# 2B TYPE B

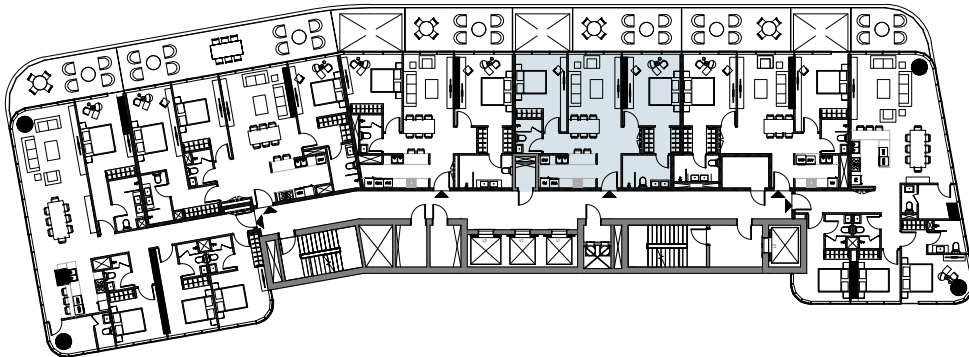
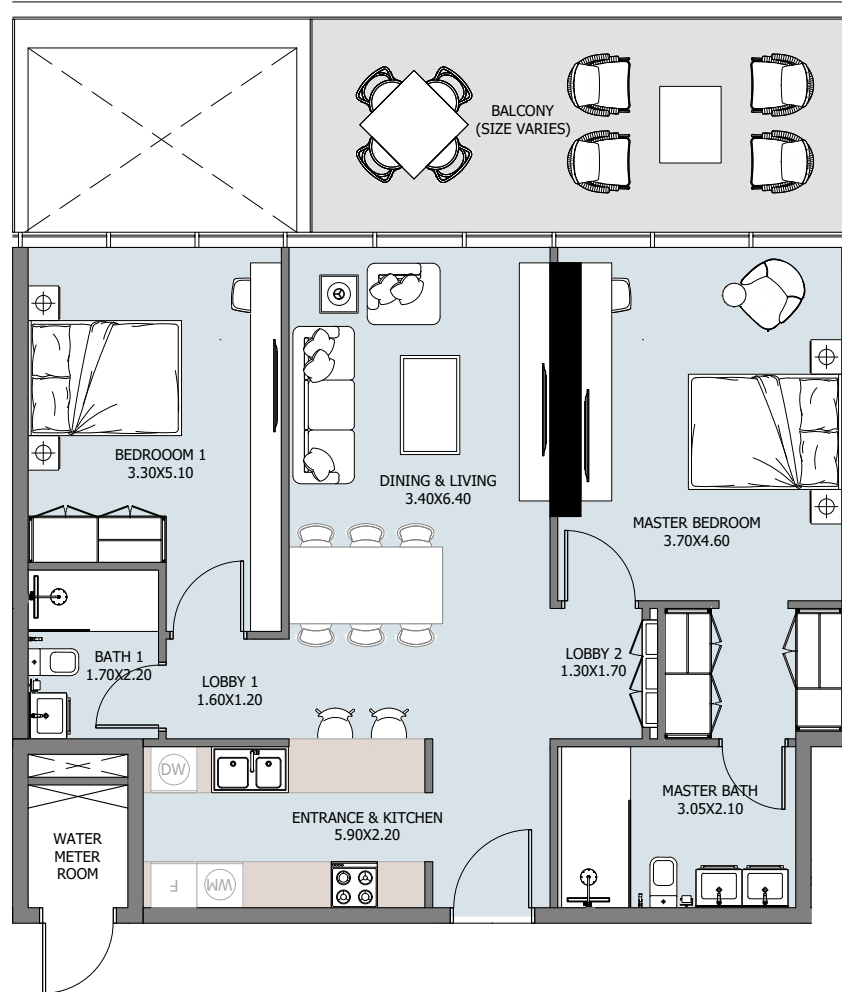
TYPICAL FLOOR



Internal Area	975.64 sq.ft
Outdoor Area	212.48 sq.ft
Total Area	1188.12 sq.ft

# 2B TYPE B1

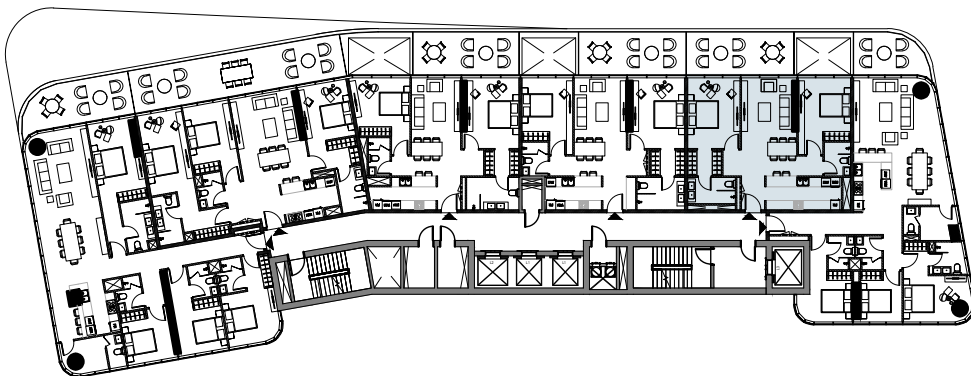
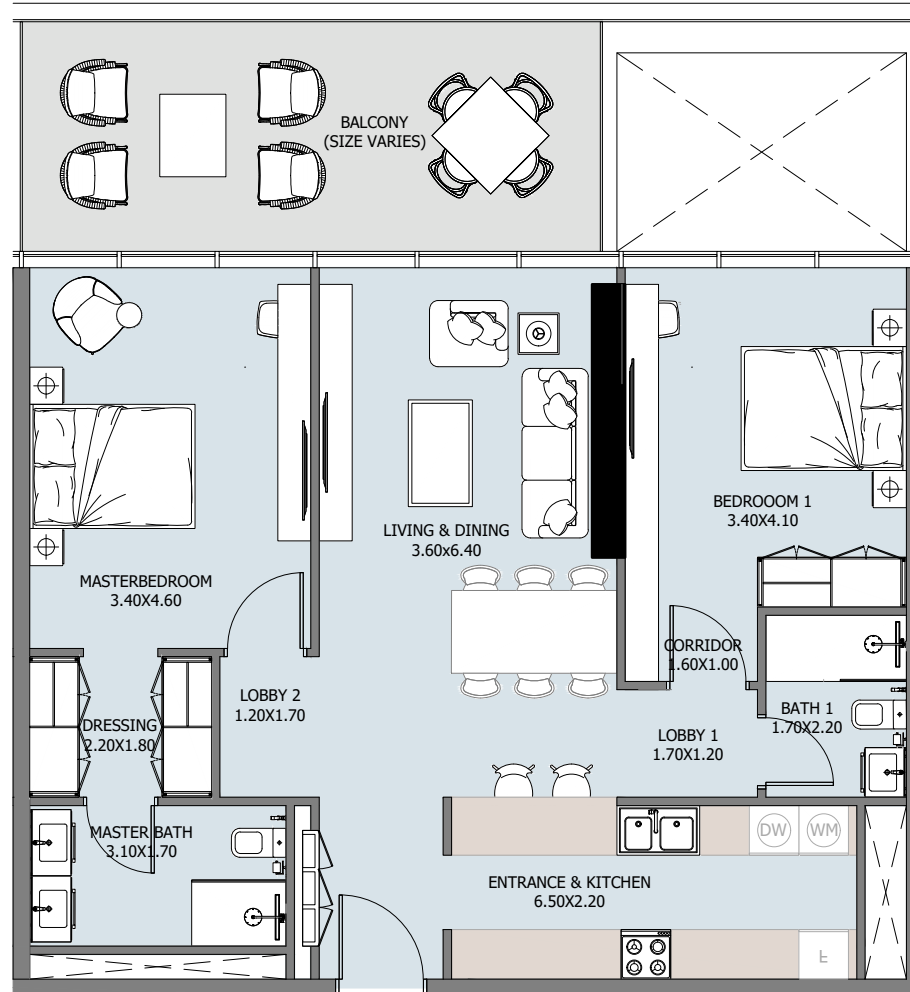
10<sup>TH</sup> FLOOR



Internal Area	960.79 sq.ft
Outdoor Area	212.48 sq.ft
Total Area	1173.27 sq.ft

# 2B TYPE C

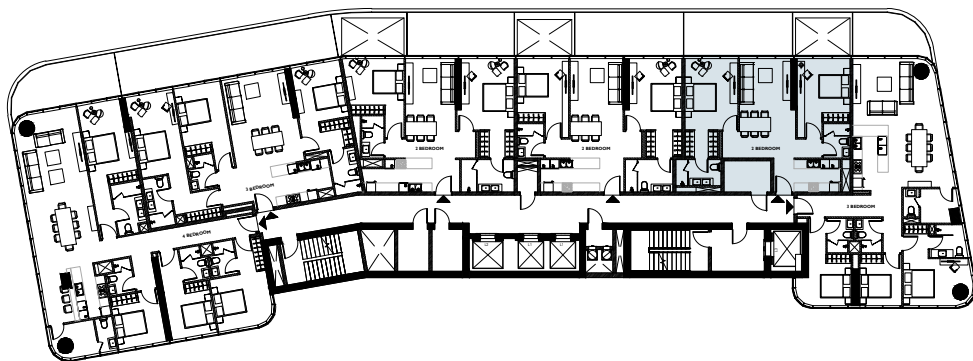
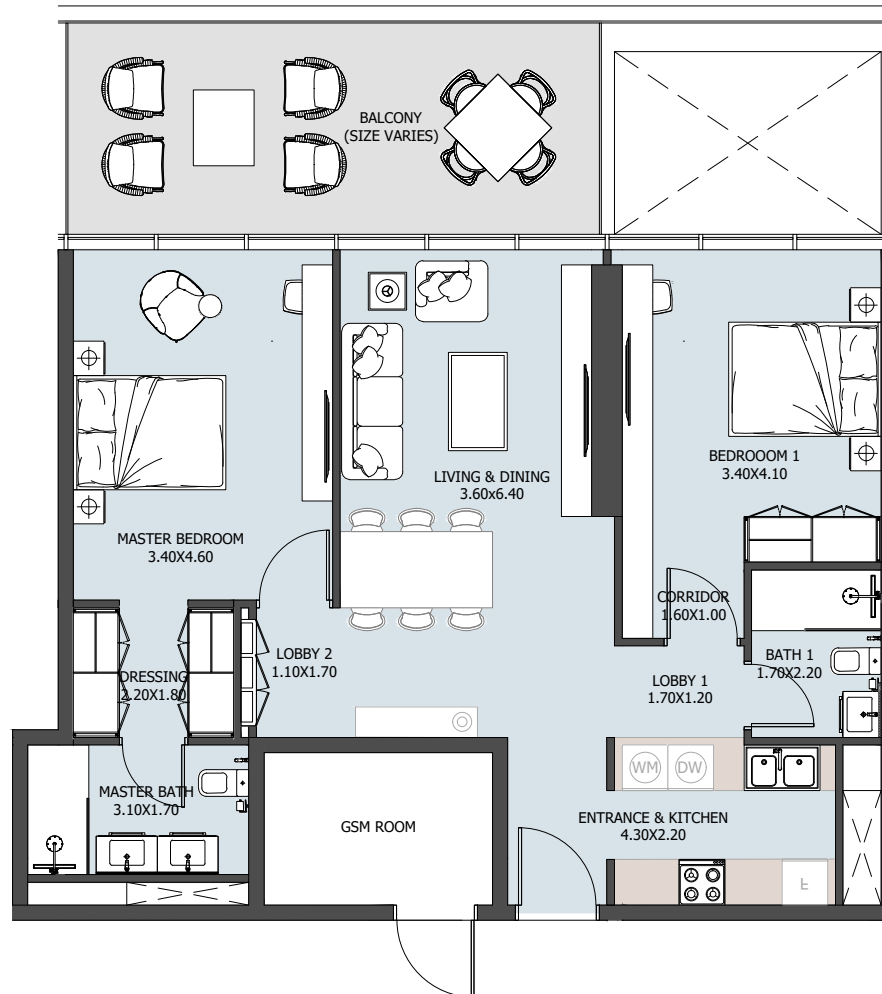
TYPICAL FLOOR



Internal Area	978.87 sq.ft
Outdoor Area	211.73 sq.ft
Total Area	1190.60 sq.ft

# 2B TYPE C1

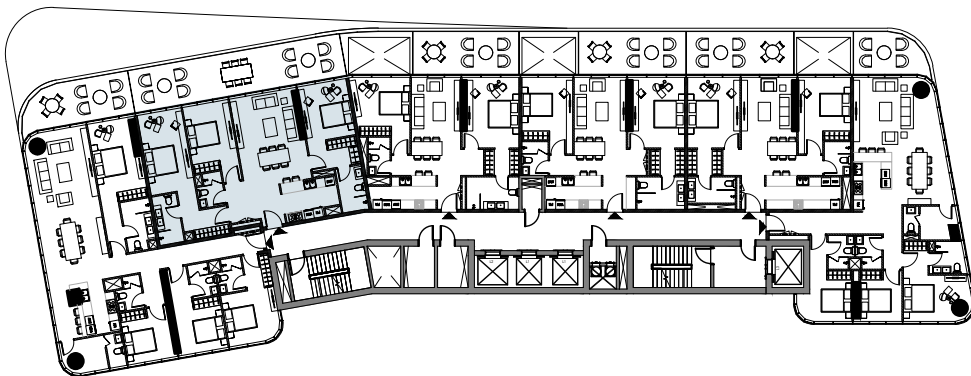
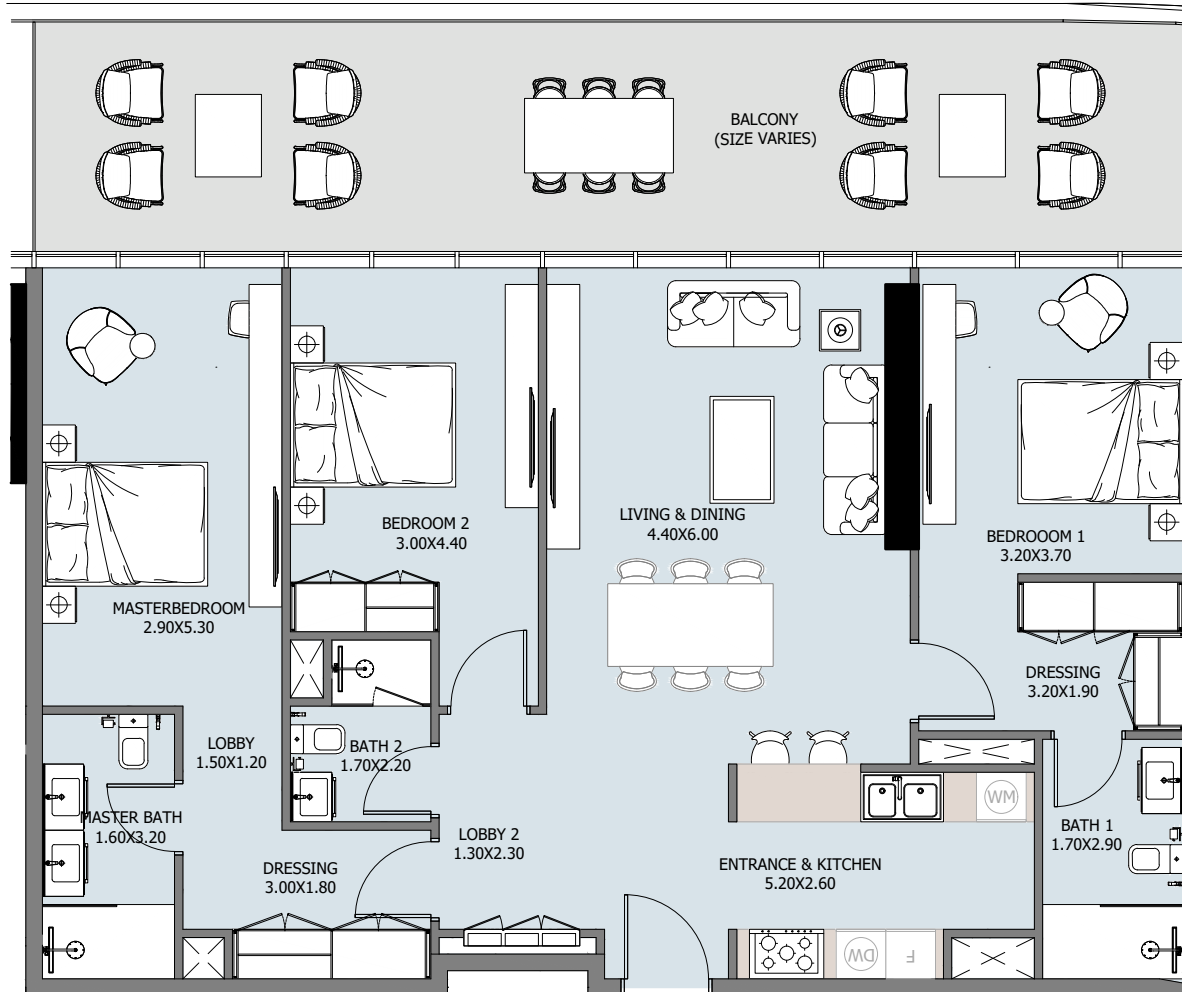
10<sup>TH</sup> FLOOR



Internal Area	921.07 sq.ft
Outdoor Area	211.73 sq.ft
Total Area	1132.80 sq.ft

# 3B TYPE A

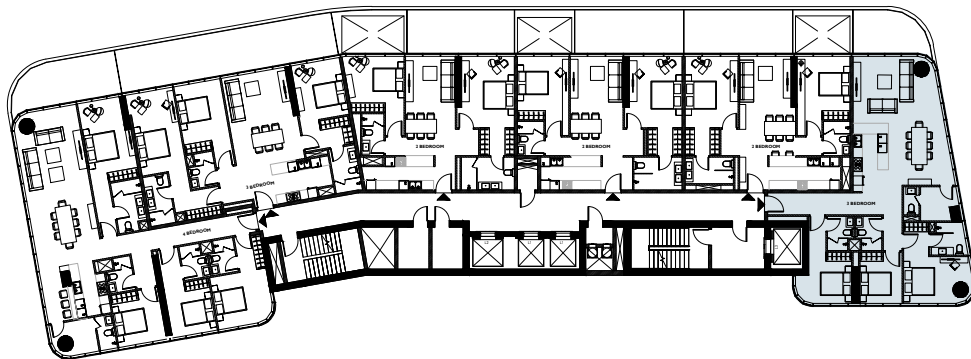
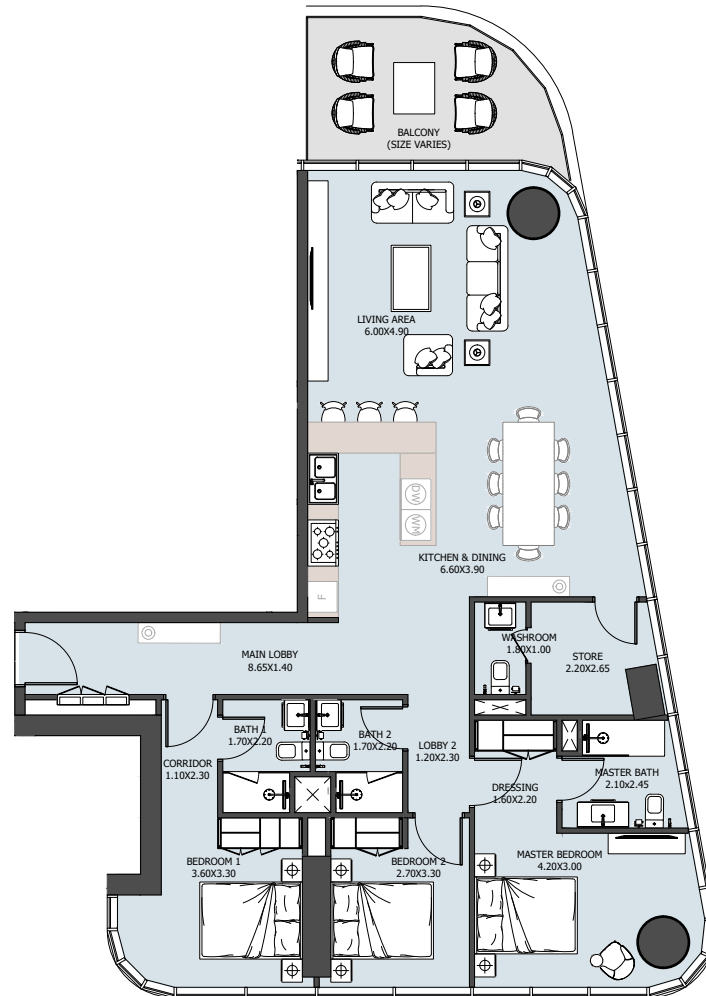
TYPICAL FLOOR



Internal Area	1282.84 sq.ft
Outdoor Area	419.58 sq.ft
Total Area	1702.42 sq.ft

# 3B TYPE B

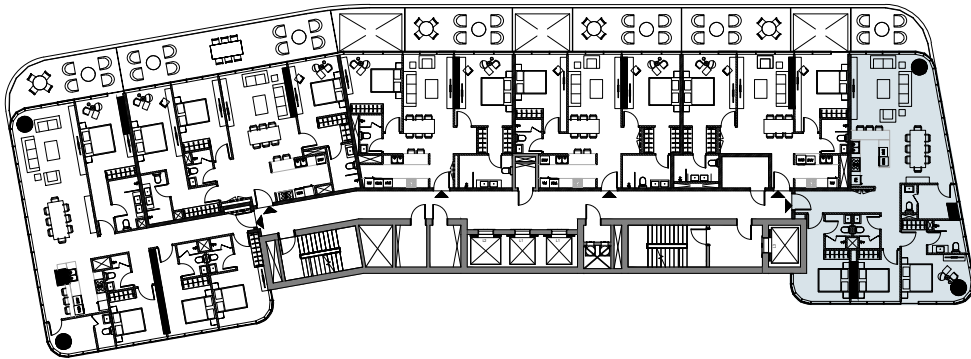
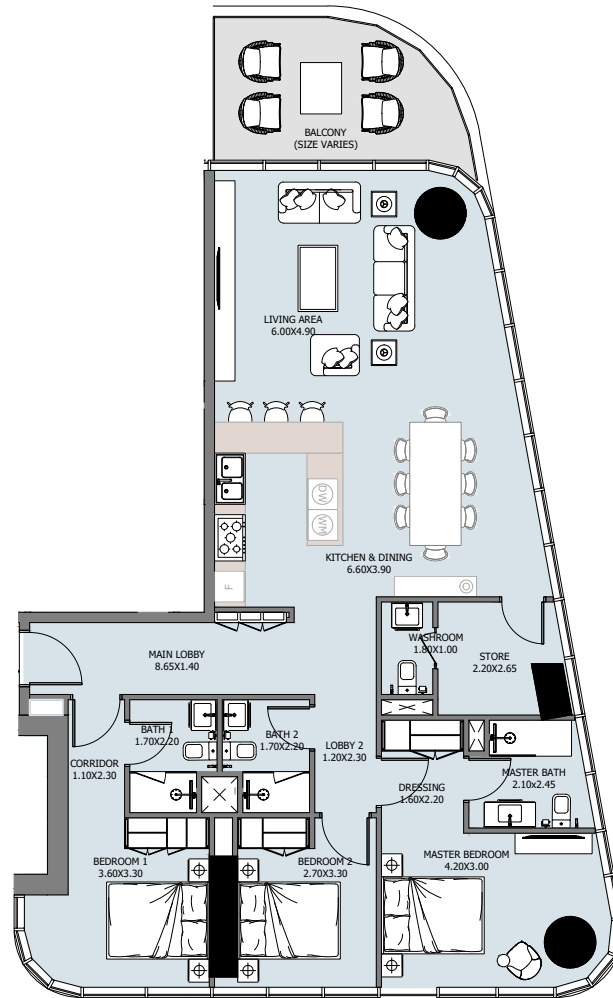
TYPICAL FLOOR



Internal Area	1415.78 sq.ft
Outdoor Area	133.90 sq.ft
Total Area	1549.68 sq.ft

# 3B TYPE B1

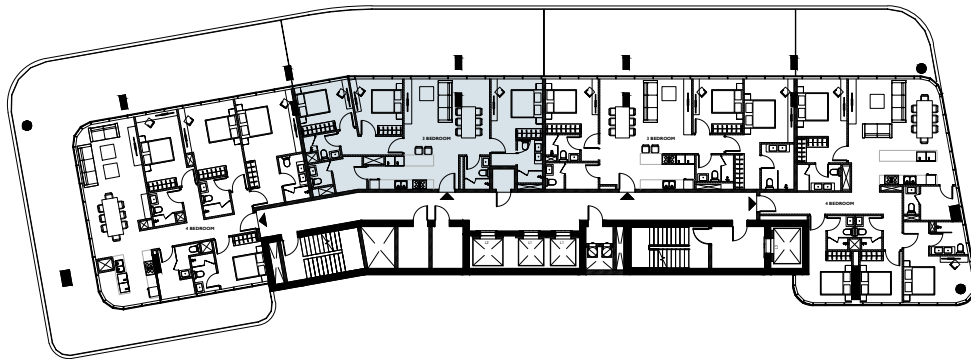
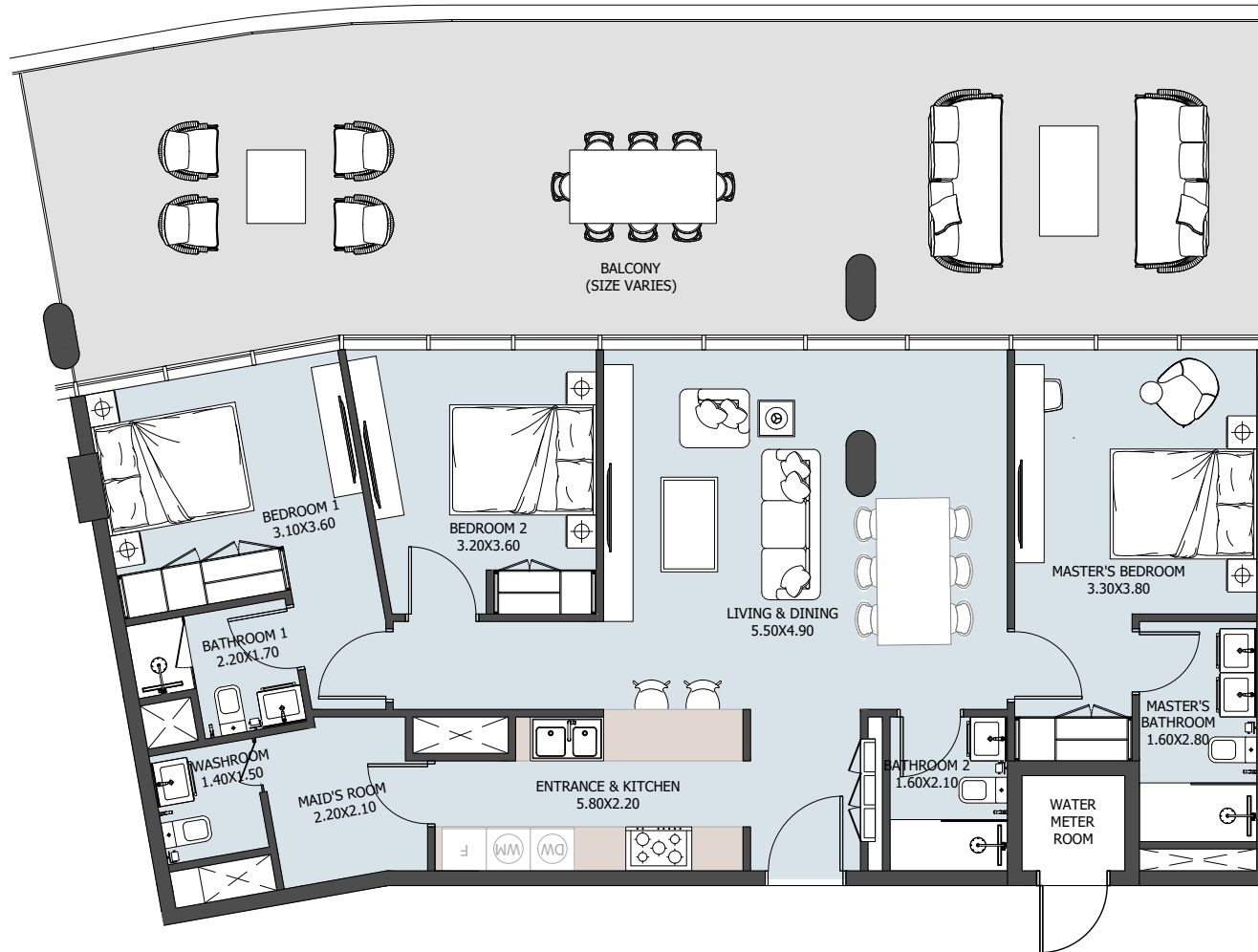
10<sup>TH</sup> FLOOR



Internal Area	1374.87 sq.ft
Outdoor Area	133.90 sq.ft
Total Area	1508.77 sq.ft

# 3B TYPE C

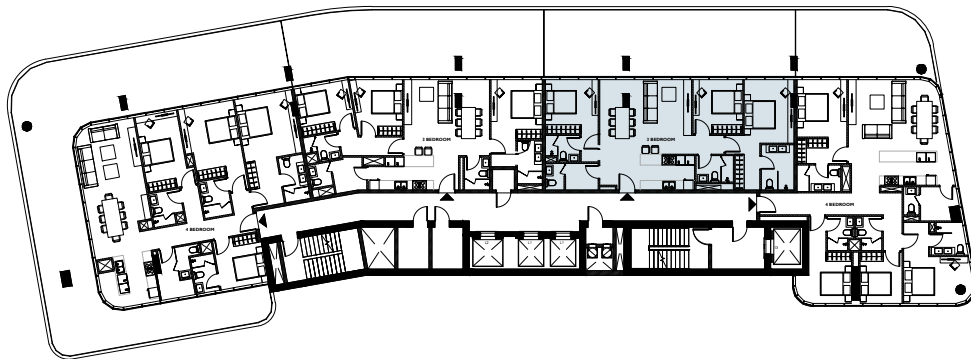
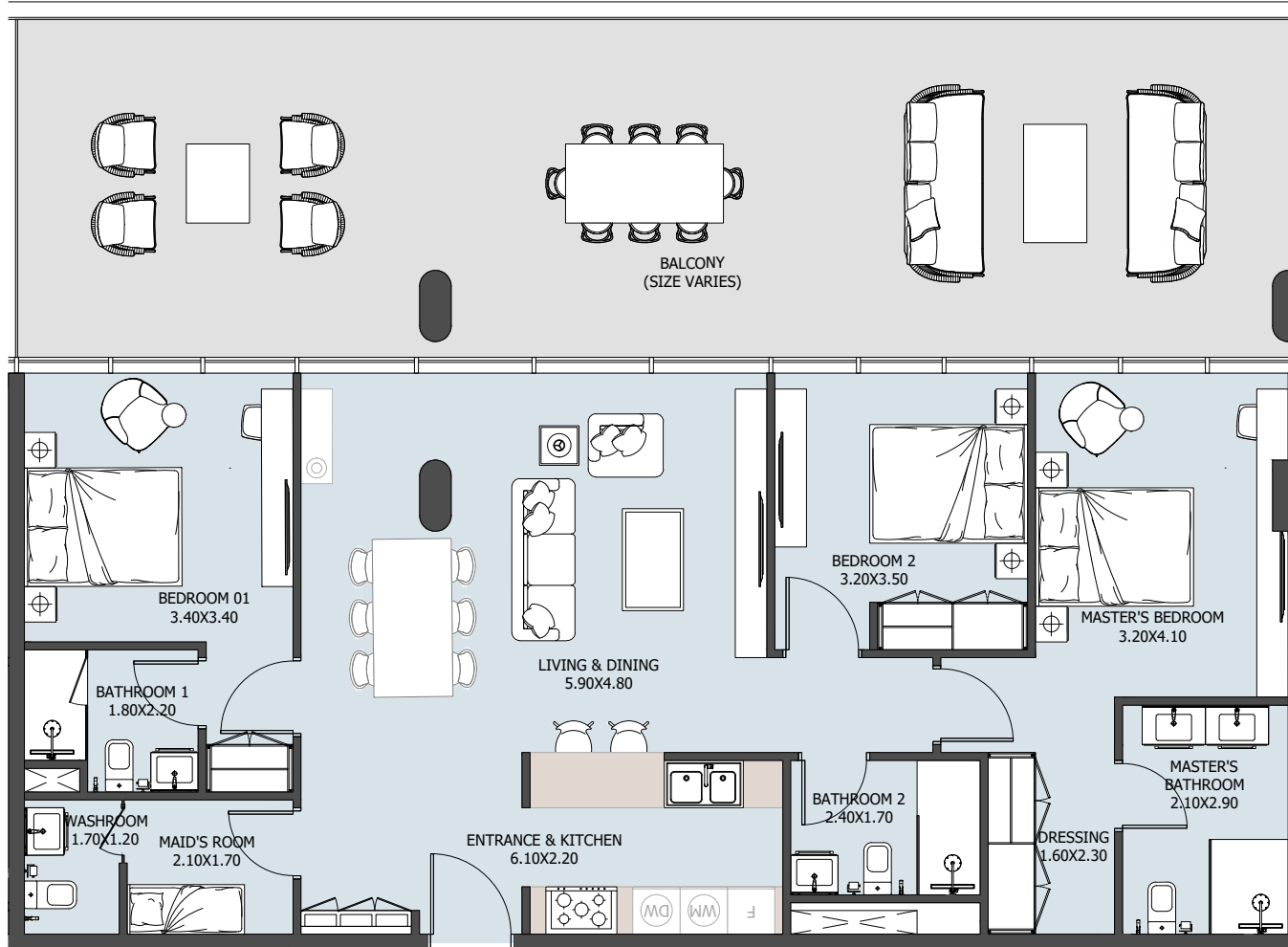
PENTHOUSE FLOOR



Internal Area	1148.94 sq.ft
Outdoor Area	768.75 sq.ft
Total Area	1917.69 sq.ft

# 3B TYPE D

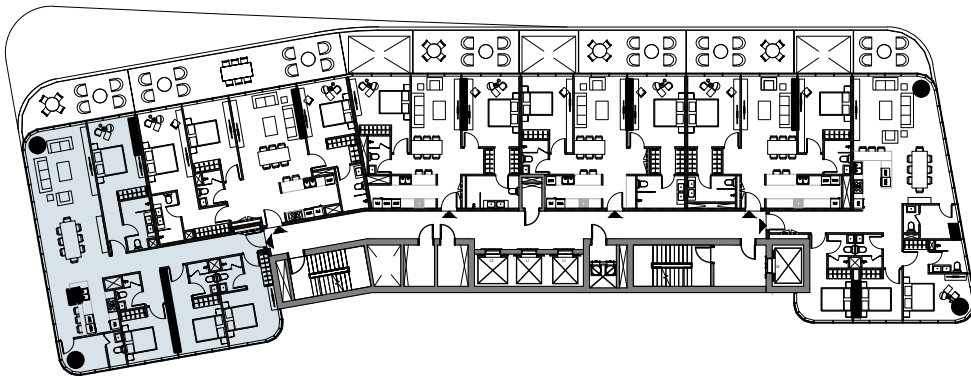
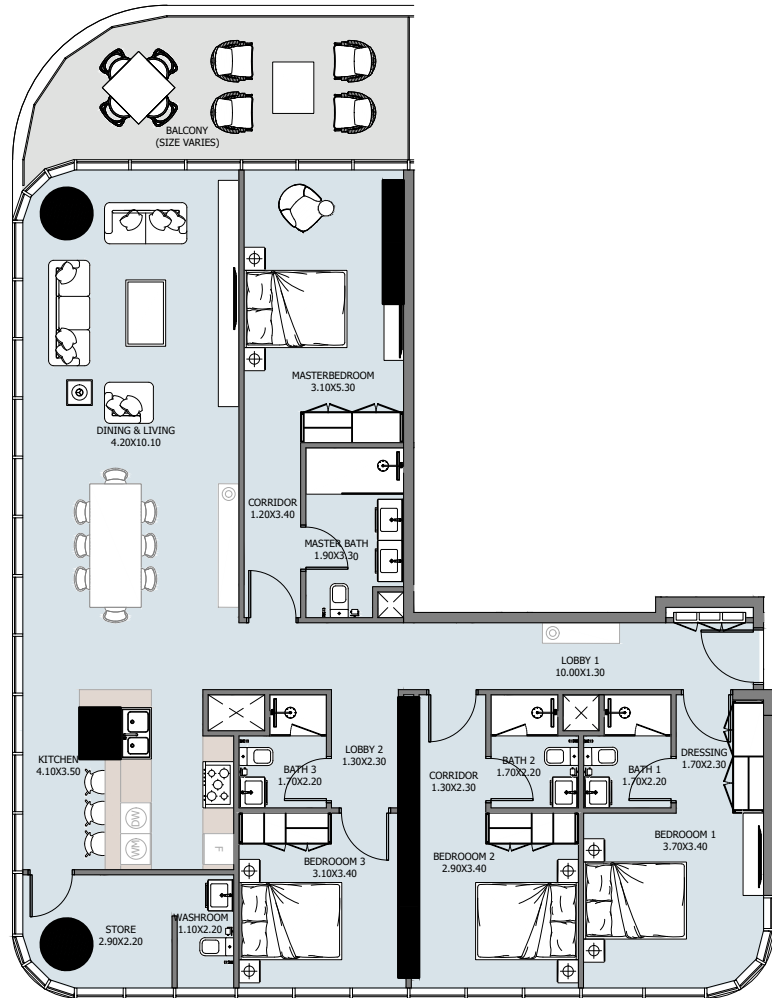
PENTHOUSE FLOOR



Internal Area	1239.89 sq.ft
Outdoor Area	751.00 sq.ft
Total Area	1990.89 sq.ft

# 4B TYPE A

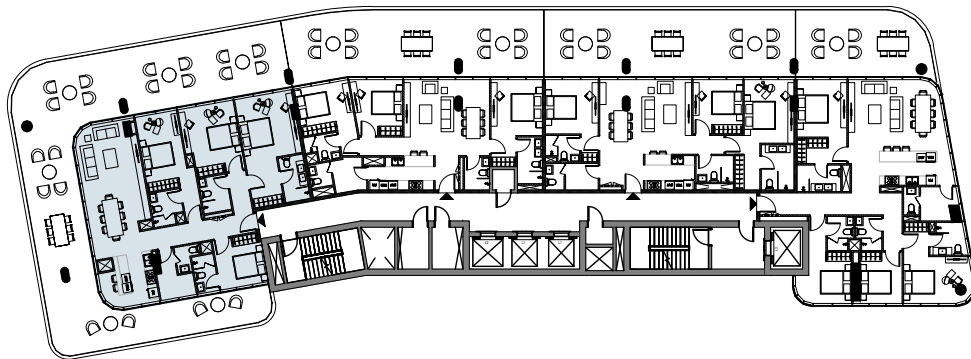
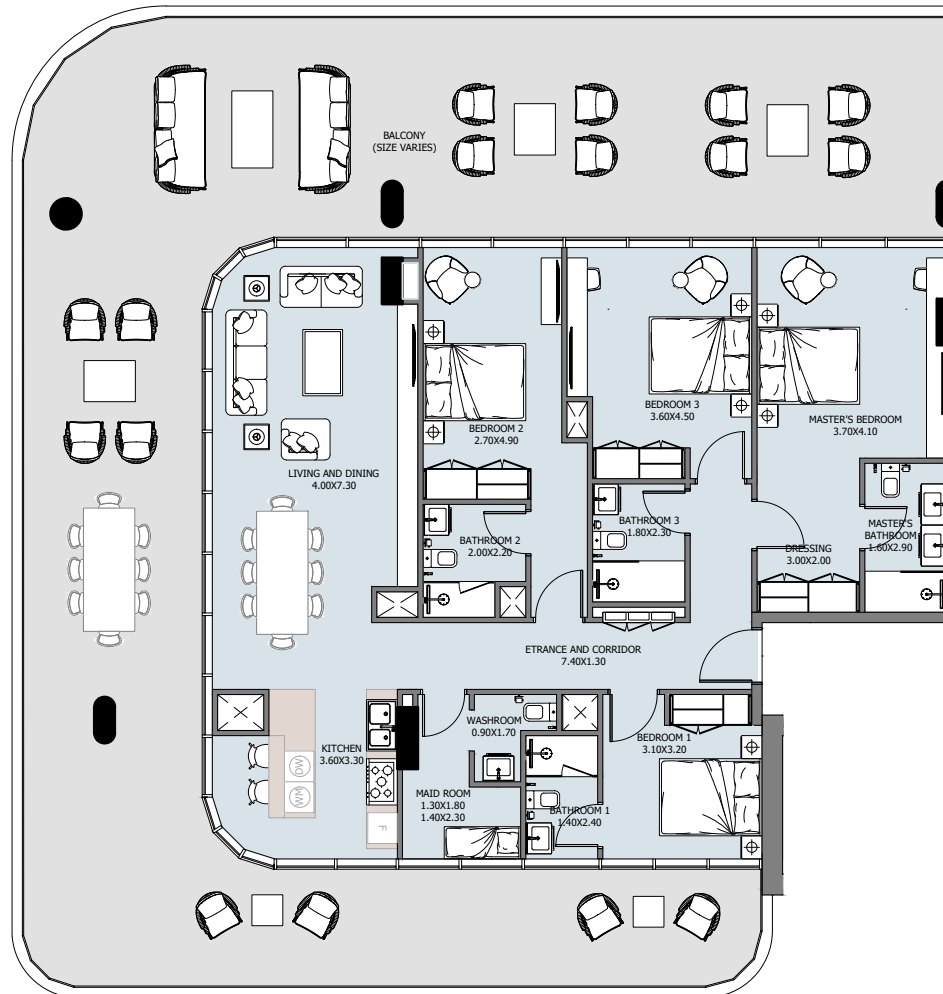
TYPICAL FLOOR



Internal Area	1800.69 sq.ft
Outdoor Area	208.71 sq.ft
Total Area	2009.40 sq.ft

# 4B TYPE B

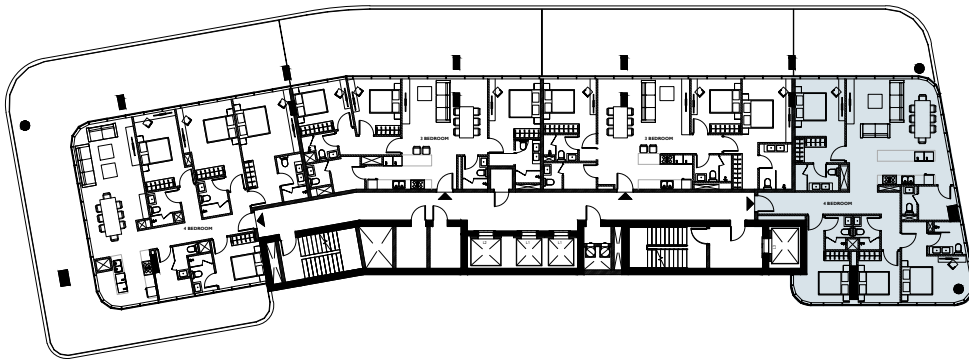
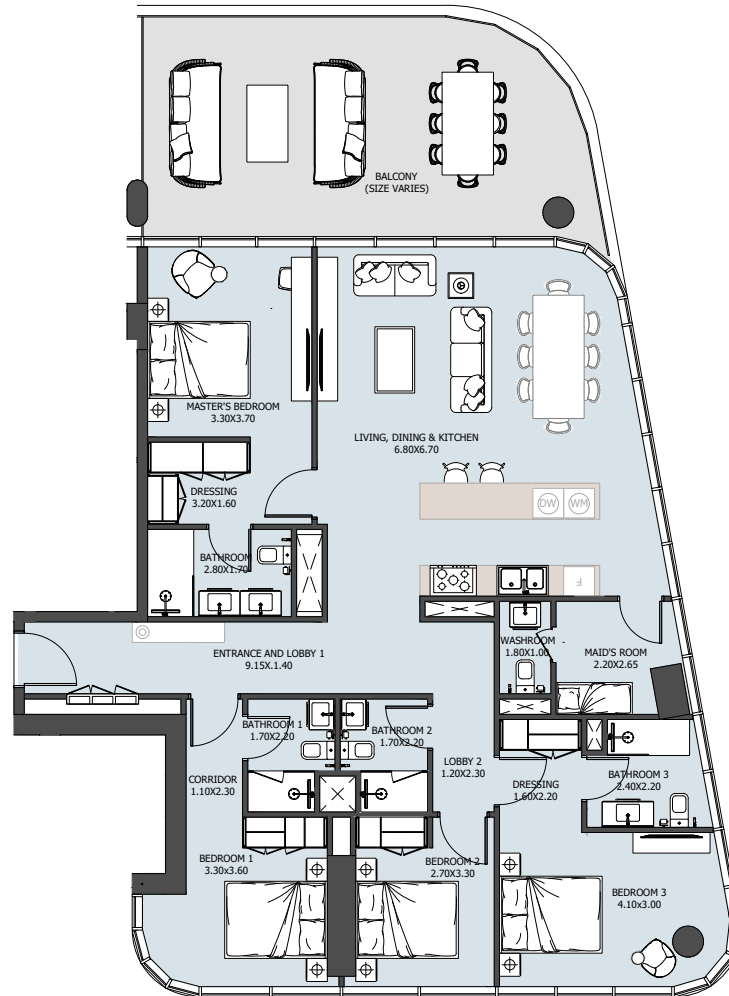
PENTHOUSE FLOOR



Internal Area	1628.79 sq.ft
Outdoor Area	1644.62 sq.ft
Total Area	3273.41 sq.ft

# 4B TYPE C

PENTHOUSE FLOOR



Internal Area	1605.98 sq.ft
Outdoor Area	389.12 sq.ft
Total Area	1995.10 sq.ft

# ريورتاج العقارية

# Reportage.

## Properties

### Abu Dhabi-UAE | Head Office

Tamouh Tower  
28<sup>th</sup> Floor, Al Reem Island  
P.O. Box: 111949  
Tollfree: +971 800 77 55 2  
info@reportageuae.com

### Dubai-UAE

Anantara Business Tower  
3<sup>rd</sup> Floor, Business Bay  
P.O. Box: 27446  
Tollfree: +971 800 77 55 2  
info@reportageuae.com

### Cairo-Egypt

Building 217  
North Teseen St.  
New Cairo  
T: +20 12 0008 1190  
info@reportageeg.com

### Istanbul-Türkiye

Levent, Tekfen Tower  
8<sup>th</sup> Floor, Office 31, Büyükdere St.  
P.O. Box 34394, Şişli  
T: +90 530 774 9595  
info@reportage.com.tr

### Riyadh-KSA

Building No. 3230  
Al Aflaj St., Al Suwaidi  
P.O. Box 12791  
T: +966 11 215 1110  
info@reportageuae.com

### Moscow-Russia

Yefremova Street 10s1, k4/4  
bld sadovye kvartaly  
P.O. Box 119048  
info@reportagerussia.com

---

For more information, visit [reportageuae.com](http://reportageuae.com)  
or call 800 77 55 2 | +971 50 244 1078

---



#### Legal Disclaimer:

The information contained in this brochure is confidential and is for the exclusive use of the recipient. This brochure may not be reproduced, distributed, delivered, or furnished to any person without the prior written approval of Reportage Properties. No representation or warranty (expressed or implied) is made or can be given with respect to the accuracy or completeness of the information herein, or that any future offer of units or apartments in the project will conform to the terms described herein. Nothing in this leaflet should be constructed as financial, legal, tax or regulatory advice. All accessories such as electronics, furniture, white goods, decorative elements and so forth included in this brochure are not part of the standard unit and used for illustration purposes only. All plans, layouts, pictures, renderings, information and details included in this brochure are indicative only and may change at any time up to the final 'as built' status in accordance with final designs of the project and regulatory approvals and planning permissions.

**R.**