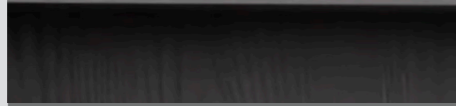


Vista 3

AL REEM ISLAND



منازل تحظى
بمزايا وراحة لا
تضاهى



We build homes
with unparalleled
elegance and
comfort

ريپورتاج العقارية

تمثل شركة ريبورتاج العقارية واحدة من أكبر مطوري العقارات الخاصة في دولة الإمارات العربية المتحدة بمشروعات قائمة في أبوظبي ودبي و مصر و تركيا و المغرب، و مشاريع دولية أخرى ضمن الخطة.

وتركز الشركة في هدفها المتمثل في تقديم حلول إسكان مبتكرة وحديثة وبأسعار في المتناول، وهي حلول من شأنها أن توفر قيمة متميزة.

تتمثل مهمة ريبورتاج العقارية في أن تكون أولى شركات العقارات الأكثر

ثقة في دولة الإمارات العربية المتحدة، وذلك من خال تطوير وتوفير منازل تجمع بين الأناقة و العملية و متاحة للجميع، و تمنح ساكنيها الشعور بالانتماء. نتطلع بثقة إلى الأعوام القادمة ونطمح إلى توسيع نطاق أعمالنا العقارية على مستوى العالم.

ABOUT REPORTAGE

Reportage Properties is one of the largest private developers in the United Arab Emirates, with projects in UAE, Egypt, Turkey, Morocco, and upcoming international projects.

We are focused and consistent in our objective to provide innovative, modern, and affordable housing solutions that not only offer our investors an outstanding value but also provide the home buyers a safe place to live in.

Our mission is to be amongst the most trusted real estate companies in the UAE by developing and providing homes that are equally elegant and affordable and provide you with a sense of belonging. We look forward to the upcoming years, and aspire to expand our real estate business globally.





AL REEM ISLAND

جزيرة الريم

بموقعها المتميز على بعد 300 متر من الساحل الشمالي الشرقي لأبو ظبي، توفر جزيرة الريم رفاة الحياة في قلب المدينة و بعيداً عن الصخب.

مع وجود ثلاثة جسور تربط جزيرة الريم بوسط مدينة أبوظبي، فإن الموقع المميز للمجتمع المطل على الواجهة البحرية و الذي يسهل الوصول إليه يجعلها واحدة من أكثر الأماكن رواجاً للعيش في عاصمة الإمارات العربية المتحدة، بالإضافة إلى قربها من وسط المدينة، فهي تقع أيضاً بالقرب من الحي المالي - جزيرة المارية ، ومركز الثقافة-جزيرة السعديات، وجميع الطرق الرئيسية.

تم تصنيف جزيرة الريم كواحدة من أفضل المجتمعات للعيش والاستثمار في أبو ظبي، بتبنيها أسلوب حياة «العمل واللعب و العيش».

Located 300 metres off the north-eastern coast of Abu Dhabi, Al Reem Island offers the luxury of city life without its hustle and bustle.

With three bridges connecting Al Reem Island to Downtown Abu Dhabi, the waterfront community's accessible location makes it one of the most popular places to live in the UAE capital. As well as its close proximity to the city centre, it is also situated near to the financial district - Al Maryah Island, cultural hub Saadiyat Island and all the major roadways.

Al Reem Island is categorized as one of the best communities for living and investment in Abu Dhabi, adopting a "work play live" lifestyle.



في قلب كل شيء

IN THE CENTRE OF
EVERYTHING

09 minutes walking to	GALLERIA MALL
08 minutes walking to	AL AZIZ MOSQUE
03 minutes driving to	AL REEM MALL
03 minutes driving to	ABU DHABI MALL
09 minutes driving to	SORBONNE UNIVERSITY AD
09 minutes driving to	DELMA PARK
10 minutes driving to	AL REEM CENTRAL PARK
10 minutes driving to	AD CENTRAL BUS STATION
11 minutes driving to	ABU DHABI BEACH
13 minutes driving to	LOUVRE ABU DHABI



قيستا 3 جزيرة الريم

في واحدة من أكثر الوجهات رواجاً في أبو ظبي وبقعة ساحرة في قلب العاصمة، يطل قيستا 3 كتحفة فنية من الحدائق وجماليات التصميم على الواجهة البحرية مباشرة، و باتباعه لنهج أبوظبي المستقبلي، يوفر هذا المبنى الشاهق نمط الحياة الكامل لجزيرة الريم برفاهية وحدائق ومنتعة في متناول الجميع، حيث كل يوم هو الأفضل.

VISTA 3 AL REEM ISLAND

In one of Abu Dhabi's most sought-after destinations and a magical spot in the very heart of the capital, Vista 3 - stands out as a masterpiece of modernity and aesthetics right at the Waterfront. Following Abu Dhabi's futuristic approach, this super high-rise building provides the whole lifestyle of Al Reem Island with its luxury, modernity and accessible fun for all, where everyday is your best day.





حياة تضع معايير
الفخامة، في مبنى
شاهق الارتفاع
يحتضن الأفق الملون
لجزيرة الريم

A HIGH STANDARD OF
LIVING, IN A SUPER
HIGH-RISE BUILDING
EMBRACING THE
COLOURFUL HORIZON
OF AL-REEM ISLAND



المستقبل الآن أقرب و العالم بأكمله بين يديك

استمتع بأفضل تجارب التسوق و الترفيه و أرقى المطاعم في الريم مول
بأكبر حديقة تلج في العالم

و اطلع على كل جديد في الغاليريا جزيرة المارية و أبو ظبي مول
و صحتك في أيد أمينة مع كليفلاند كلينك أبو ظبي- رعاية صحية
بمستوى عالمي على بعد خطوات منك
و عش رفاهية الضيافة الاستثنائية في أرقى سلاسل الفنادق بأبو ظبي -
فورسيزونز و روزوود أبو ظبي و غيرهما

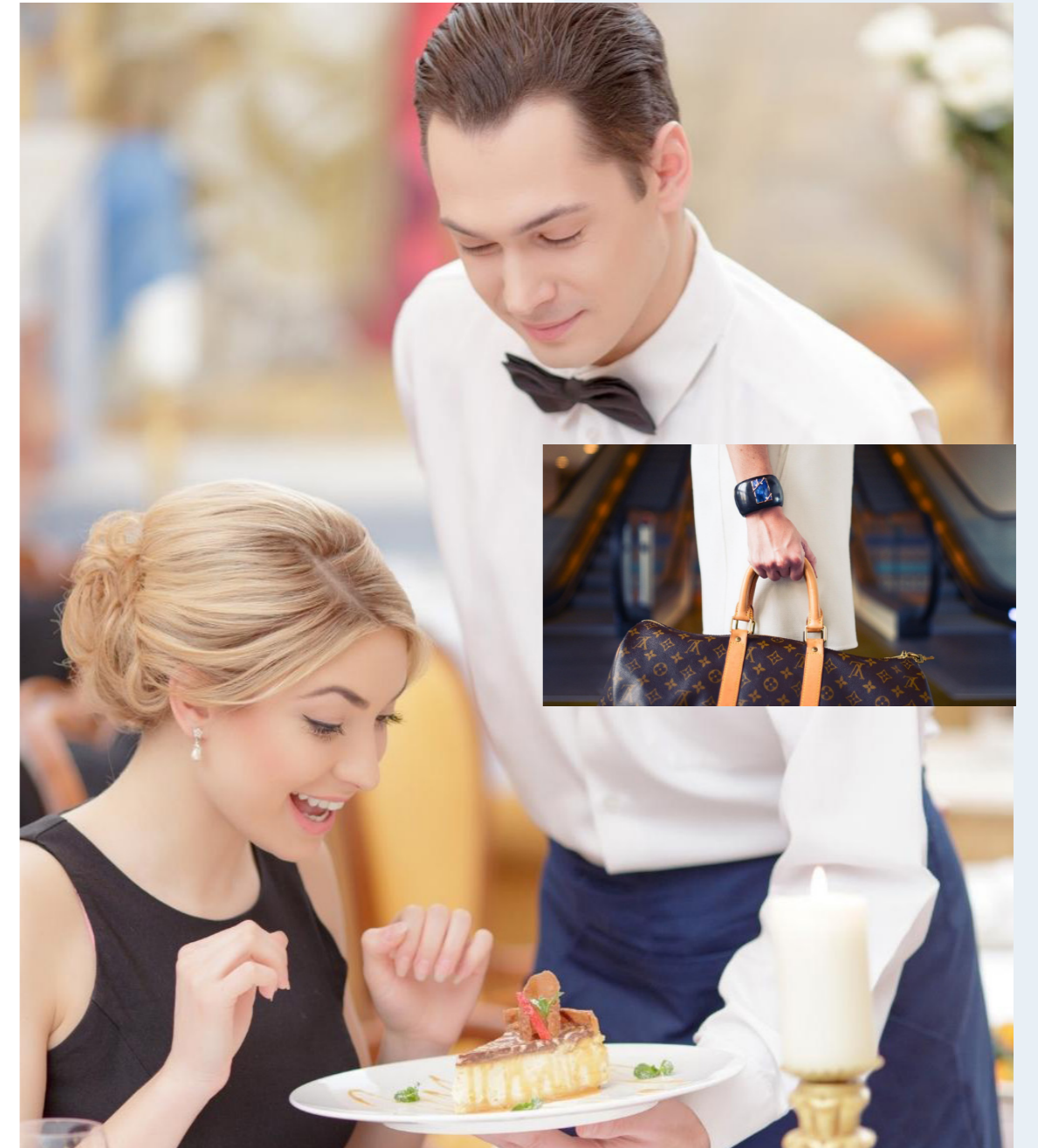
THE FUTURE IS NOW CLOSER AND THE WHOLE WORLD IS AT YOUR FINGERTIPS

Enjoy the best shopping, fine dining, and entertainment experiences at
Al Reem Mall - with the biggest Snow Park in the world

Or have a closer look at - The Galleria Maryah Island, or Abu Dhabi Mall

And Feel better with Cleveland Clinic Abu Dhabi's world-class
healthcare just minutes away.

And experience luxury hospitality at the Four Seasons Hotel Abu Dhabi,
Rosewood Abu Dhabi, and other top Abu Dhabi hotel chains



A
WATERFRONT
PARADISE
WHERE
BLUE IS
YOUR
VIEW



جنة من الجمال
على الواجهة
المائية و إطلالة
استثنائية على
اللون الأزرق



انغمس في تجربة معيشية تشبه المنتجعات

صالة ألعاب رياضية،
مساحات مفتوحة، و
حمامات سباحة فيروزية

INDULGE IN A RESORT-LIKE LIVING EXPERIENCE

Gym, Open Spaces,
and Turquoise
Swimming Pools







إضاءة طبيعية و
مساحات تنطق
بالأناقة و الدفء
لتحتضن أوقاتك
السعيدة

AMPLE NATURAL
LIGHT AND
COZY SPACES
THAT EMBRACE
YOUR HAPPY
MOMENTS





A HOME THAT IS UNIQUELY YOURS

An inspiring blend of sophisticated finishes, and contemporary custom details



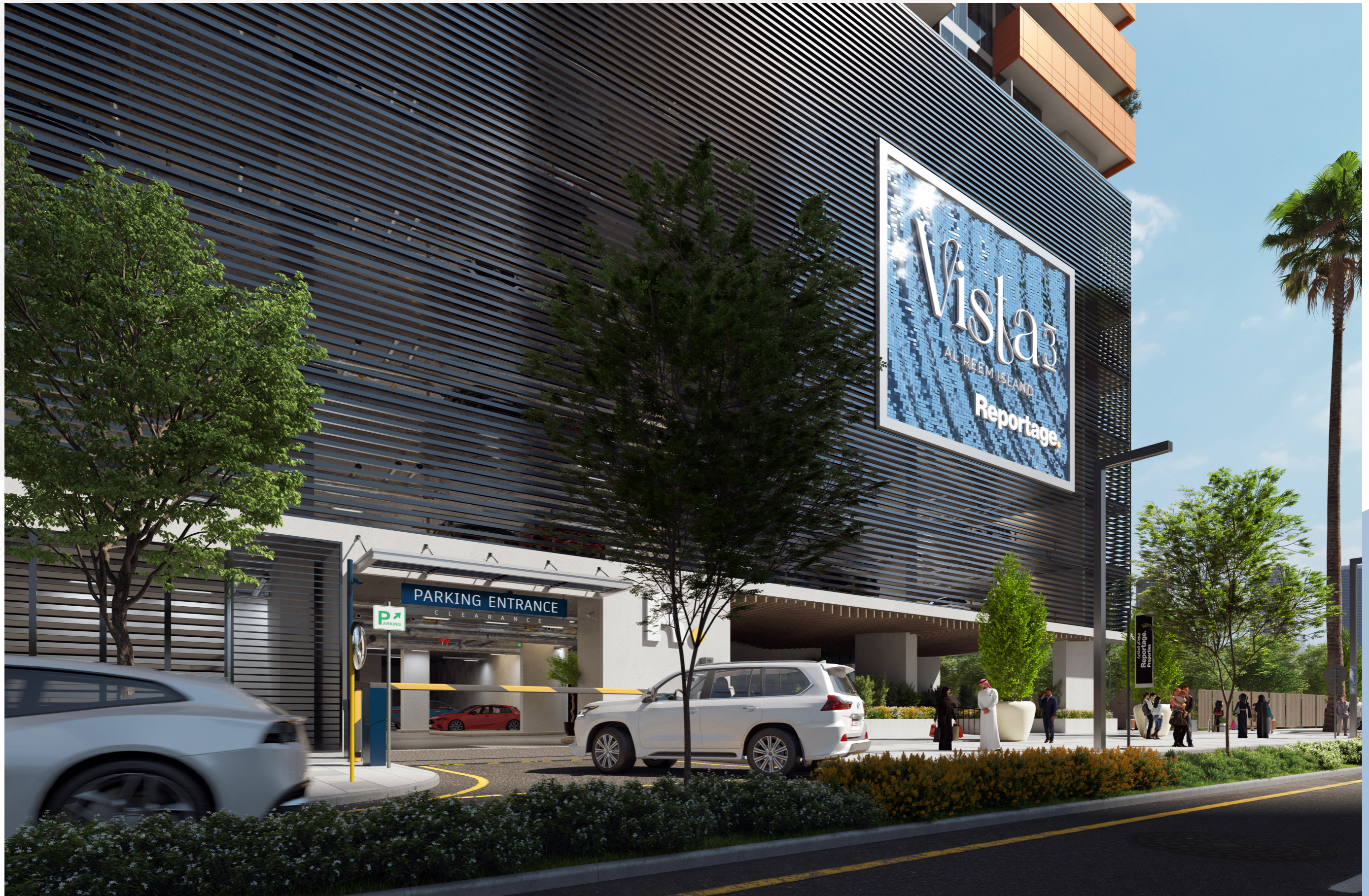
تفرد تام و منزل
مستوحى منك

مزيج ملهم من أرقى لمسات التشطيب
و تفاصيل عصرية صنعت خصيصاً لأجلك

LUXURY AS IT SHOULD BE AND
PURE DESIGN AESTHETICS



الرفاهية كما يجب أن تكون
و روعة جماليات التصميم

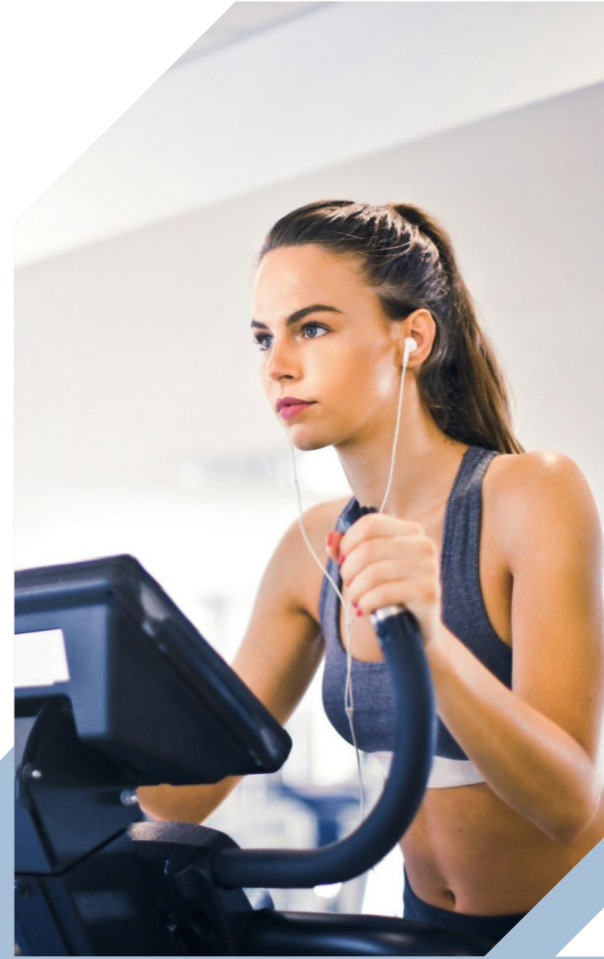


UNIT FEATURES



- شرفات / تراسات حسب مخطط الوحدة
- خزائن مطبخ وكونترتوب
- حمامات مكسوة بالكامل وأجنحة
- وحمامات للضيوف حيثما كان ذلك متاحا
- نوافذ زجاجية مزدوجة
- قمر صناعي رئيسي ووصلات ألياف ضوئية
- إنترنت عالي السرعة
- تكييف هواء مركزي
- وحدات تخزين و مرايا
- دش وحوض استحمام في كل حمام

- Balconies / Terraces as per unit plan
- Kitchen cabinets and countertops
- Fully tiled bathrooms, en-suites and guest toilets wherever applicable
- Double-glazed windows
- Satellite master antenna and fibre optic connection for high-speed internet access
- Central air conditioning
- Shower in each bathroom



مرافق و خدمات
بمستوى عالمي

WORLD-CLASS
AMENITIES



صالة ألعاب رياضية
Gym



ردهة كبيرة
Large Lobby



منطقة للشواء
BBQ Area



مناطق جلوس مغطاة
Shaded Seating Areas



مواقف سيارات مغطاة
Covered Parking Spaces



مصاعد كبيرة
Large Lifts



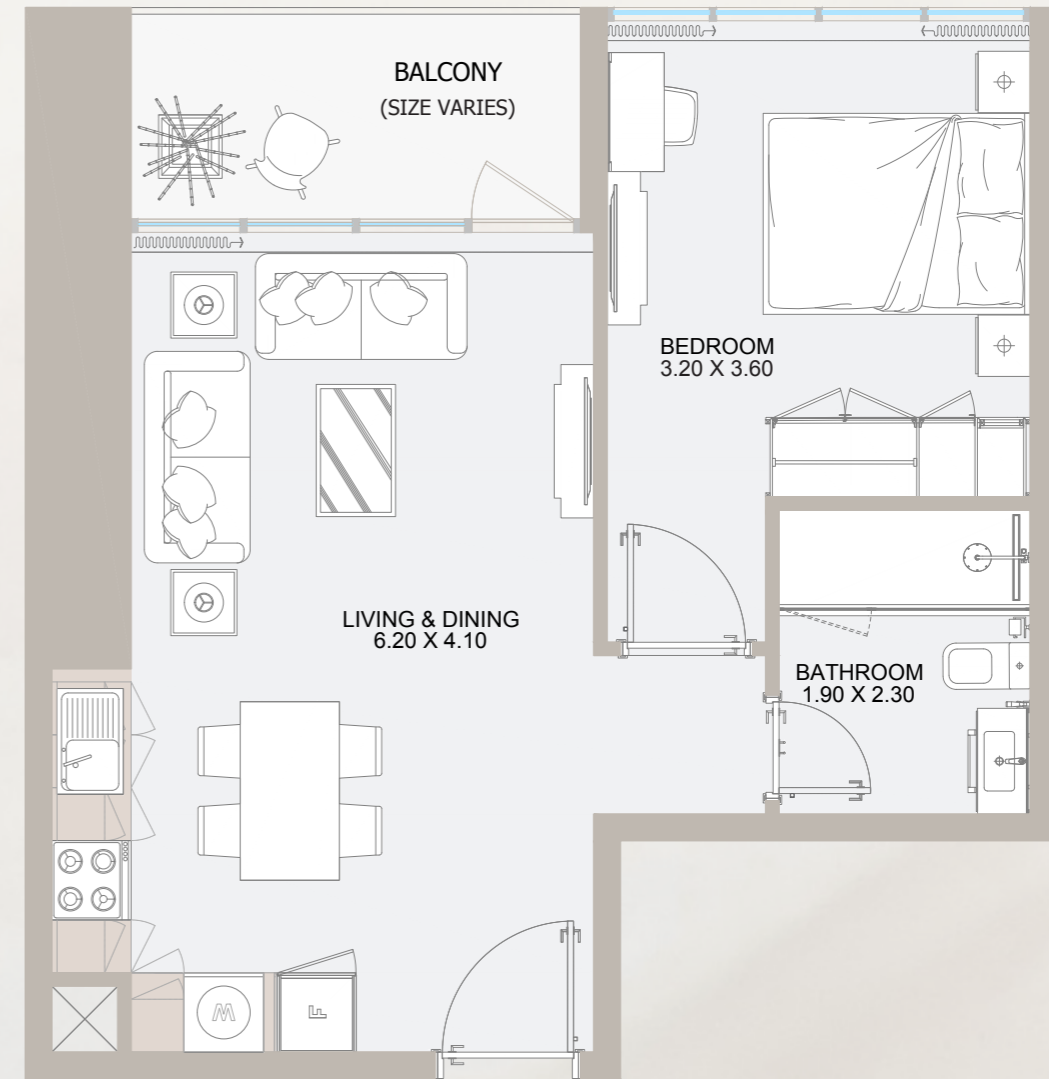
مناطق خضراء
Landscaped Areas



مسبح للأطفال
Kids Swimming Pool

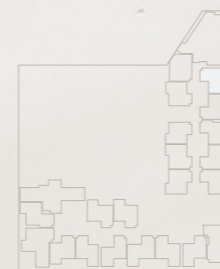
مسبح للكبار
Adult Swimming Pool

1B TYPE - A



UNIT TYPES

All drawings and dimensions are approximate. Drawings are not to scale and are subject to change without notice. The developer reserves the right to make revisions. The units are measured at typical floors in the building and columns may vary in size depending on the floor level. The furnishing and accessories shown are for representation only. The availability, length and width of the balcony varies depending on which floor and which orientation the unit is located within the building. There will be slight differences in the internal areas between the same unit types depending on the shaft sizes that go through the units.

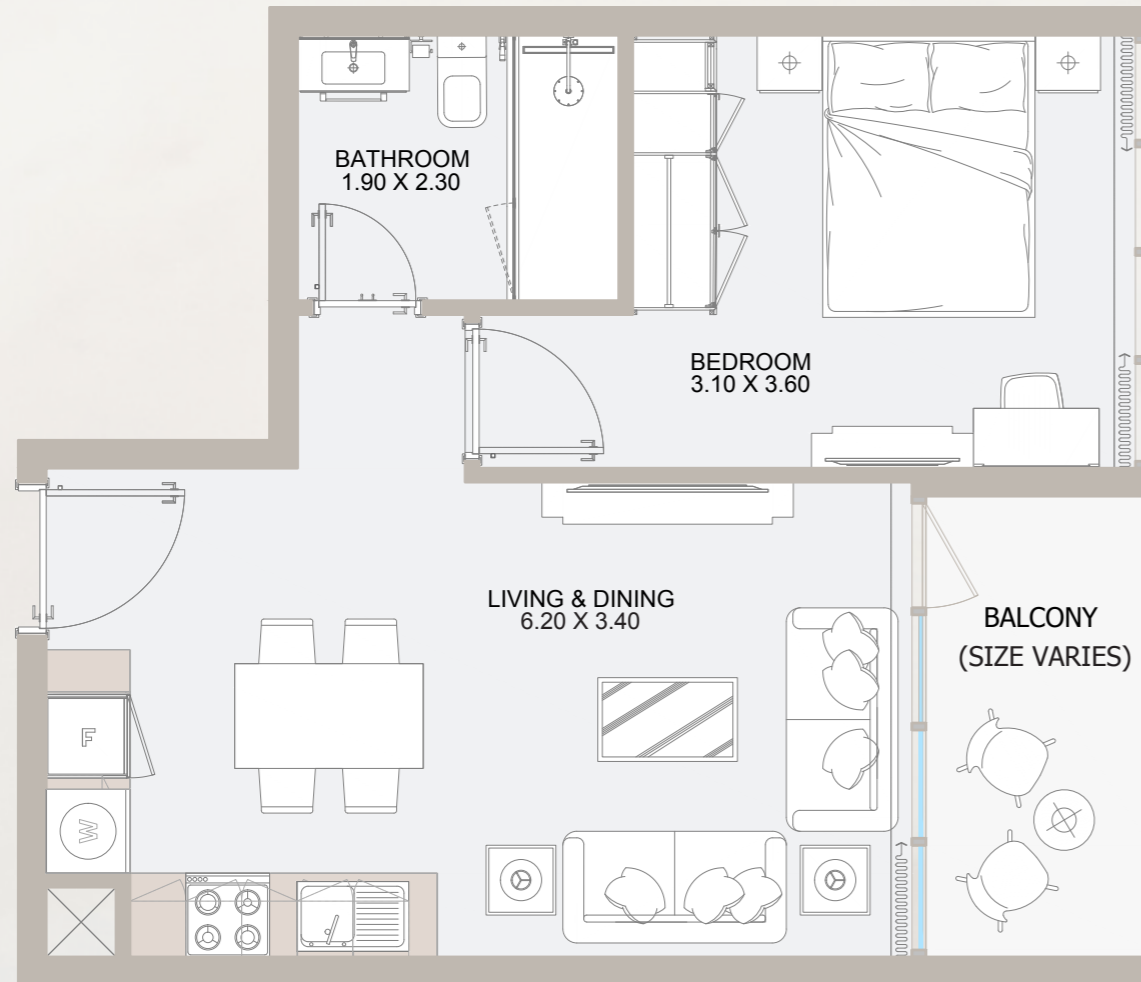


From 7th Floor to 32nd Floor

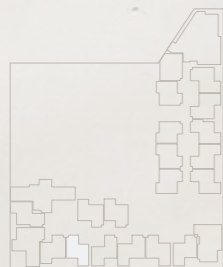
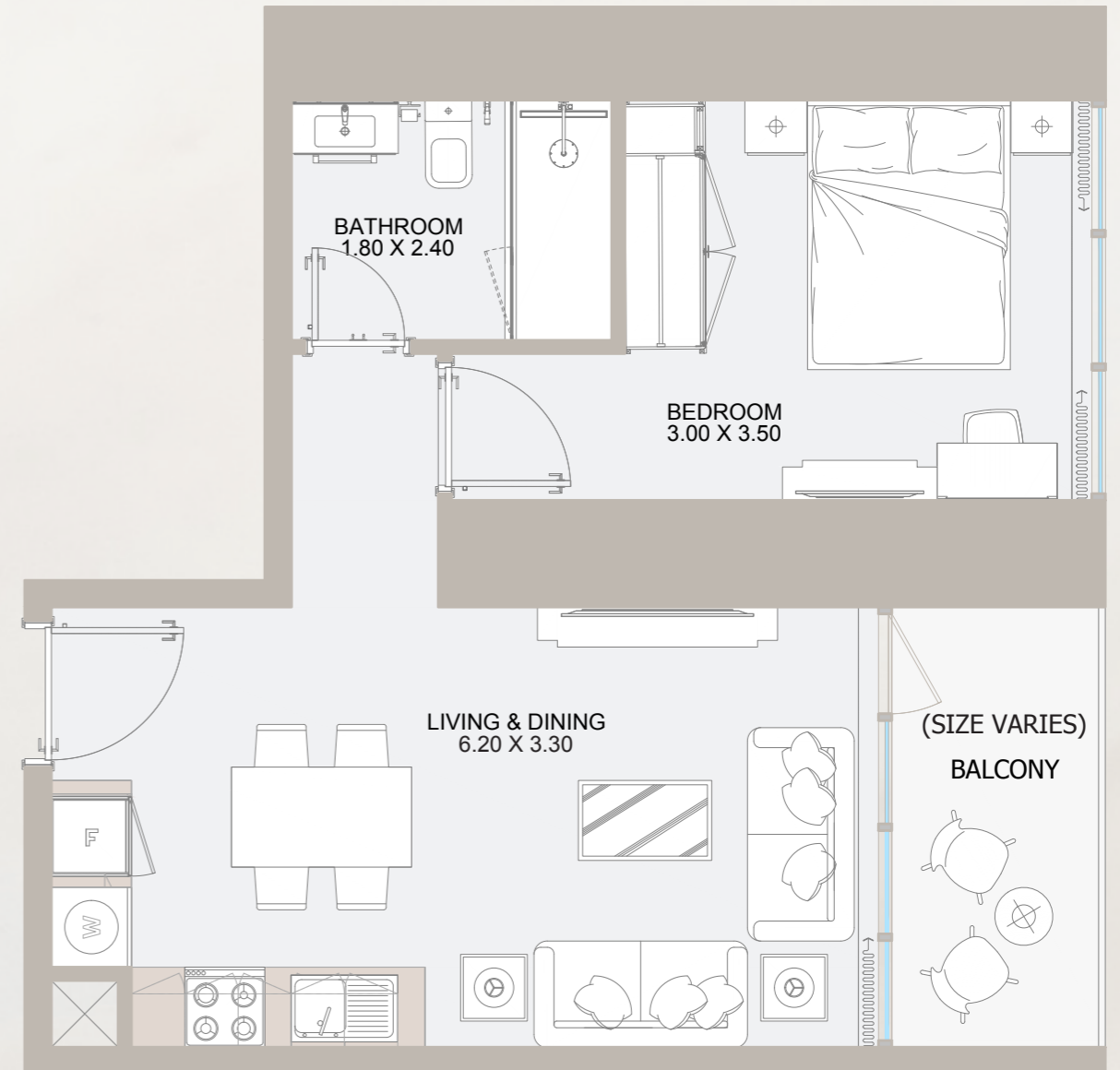
Internal Area	465 to 518.7 sq.ft
Outdoor Area	64 to 73.5 sq.ft
Total Area	529 to 588.3 sq.ft

All drawings and dimensions are approximate. Drawings are not to scale and are subject to change without notice. The developer reserves the right to make revisions. The units are measured at typical floors in the building and columns may vary in size depending on the floor level. The furnishing and accessories shown are for representation only. The availability, length and width of the balcony varies depending on which floor and which orientation the unit is located within the building. There will be slight differences in the internal areas between the same unit types depending on the shaft sizes that go through the units.

1B TYPE - B



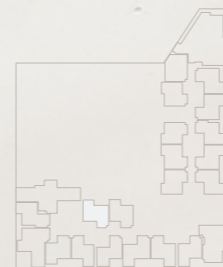
1B TYPE - C



From 7th Floor to 32nd Floor

Internal Area	435.5 to 509.7 sq.ft
Outdoor Area	45.8 to 321.3 sq.ft
Total Area	481.3 to 789.42 sq.ft

All drawings and dimensions are approximate. Drawings are not to scale and are subject to change without notice. The developer reserves the right to make revisions. The units are measured at typical floors in the building and columns may vary in size depending on the floor level. The furnishing and accessories shown are for representation only. The availability, length and width of the balcony varies depending on which floor and which orientation the unit is located within the building. There will be slight differences in the internal areas between the same unit types depending on the shaft sizes that go through the units.

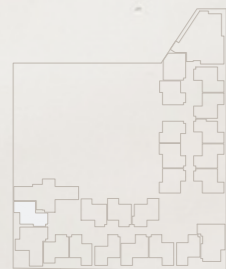
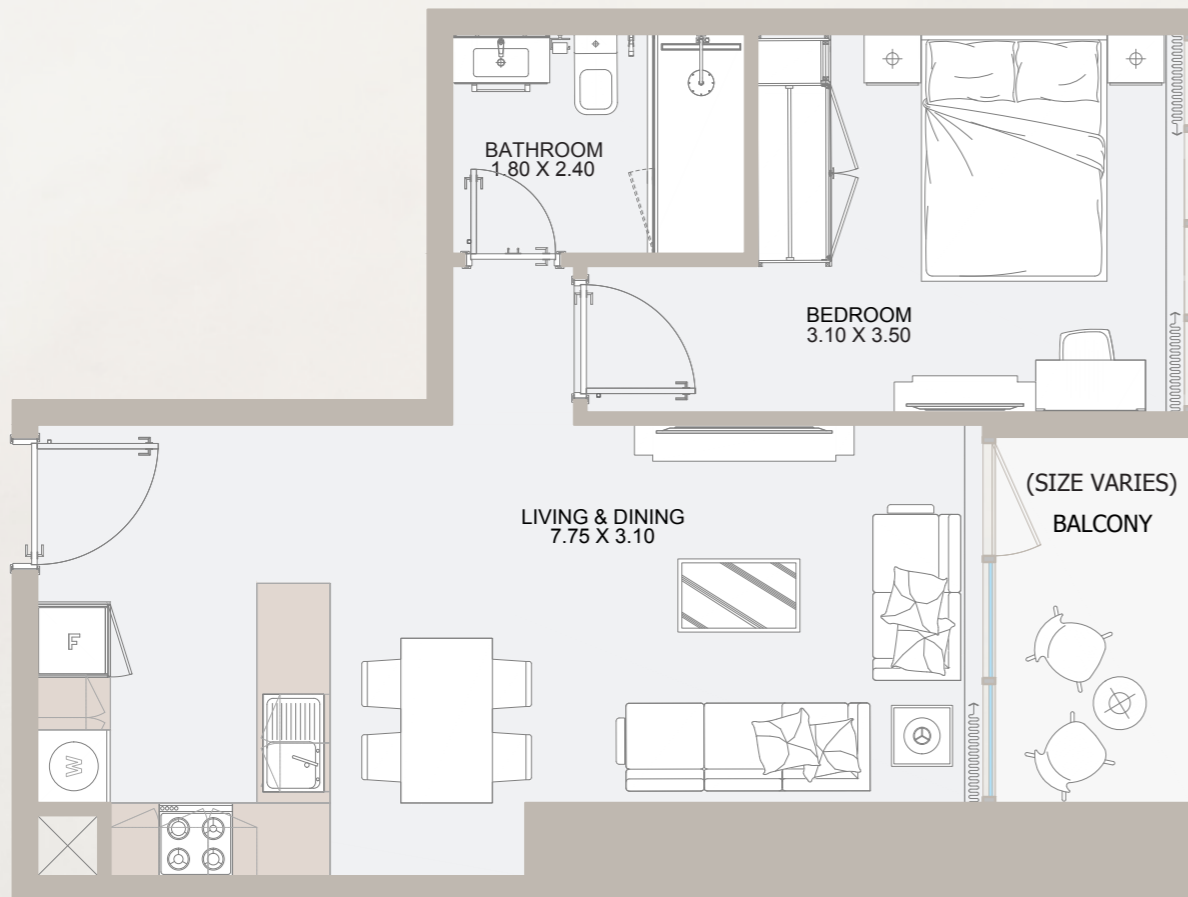


From 7th Floor to 32nd Floor

Internal Area	468.12 to 523.6 sq.ft
Outdoor Area	47.4 to 315.7 sq.ft
Total Area	515.5 to 813.3 sq.ft

All drawings and dimensions are approximate. Drawings are not to scale and are subject to change without notice. The developer reserves the right to make revisions. The units are measured at typical floors in the building and columns may vary in size depending on the floor level. The furnishing and accessories shown are for representation only. The availability, length and width of the balcony varies depending on which floor and which orientation the unit is located within the building. There will be slight differences in the internal areas between the same unit types depending on the shaft sizes that go through the units.

1B TYPE - D

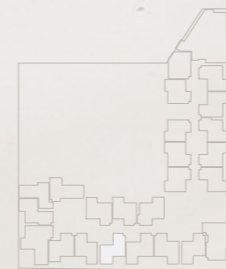
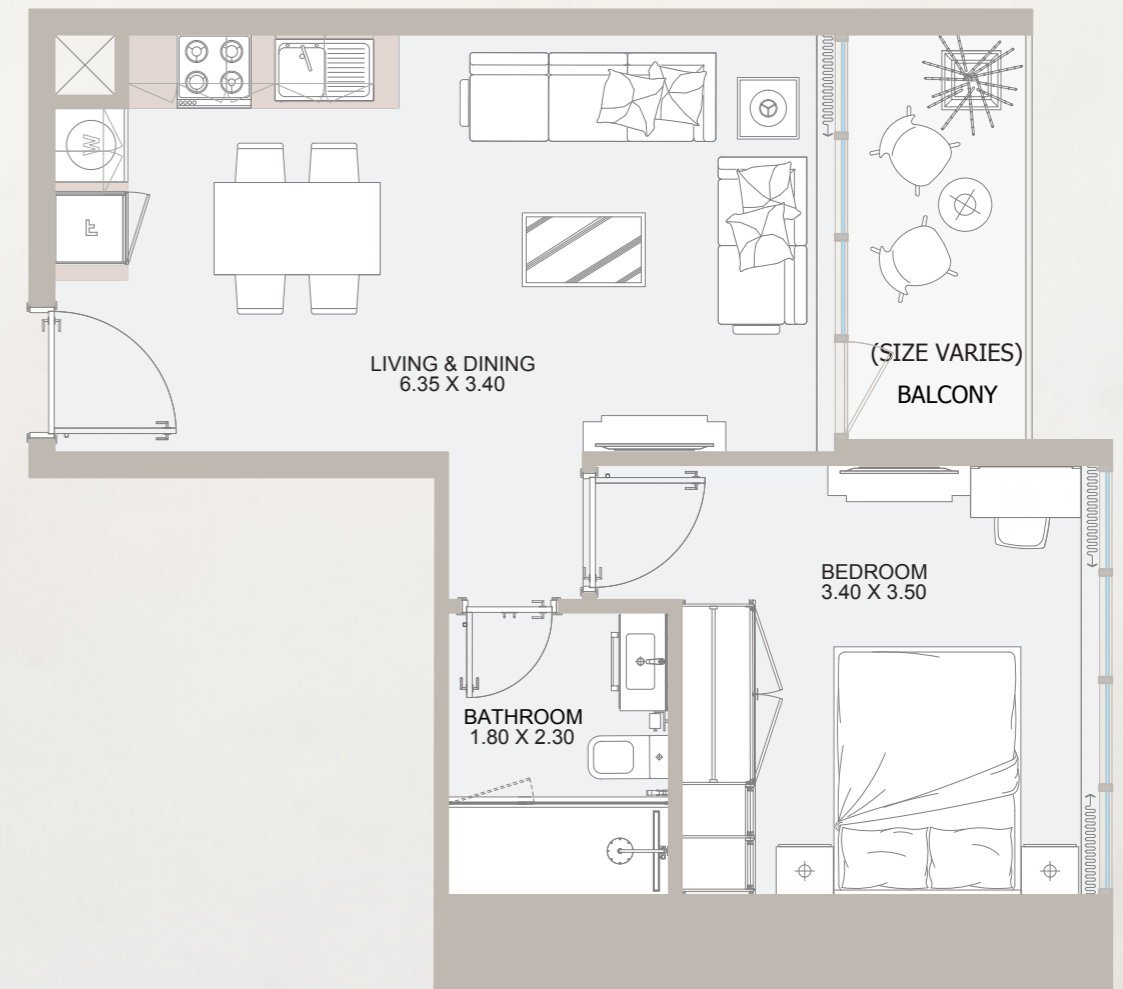


From 7th Floor to 26th Floor

Internal Area	528.5 sq.ft
Outdoor Area	61.2 to 71.14 sq.ft
Total Area	589.7 to 599.6 sq.ft

All drawings and dimensions are approximate. Drawings are not to scale and are subject to change without notice. The developer reserves the right to make revisions. The units are measured at typical floors in the building and columns may vary in size depending on the floor level. The furnishing and accessories shown are for representation only. The availability, length and width of the balcony varies depending on which floor and which orientation the unit is located within the building. There will be slight differences in the internal areas between the same unit types depending on the shaft sizes that go through the units.

1B TYPE - E

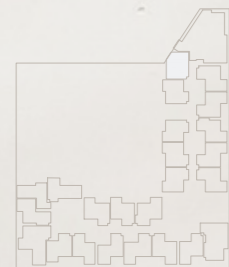
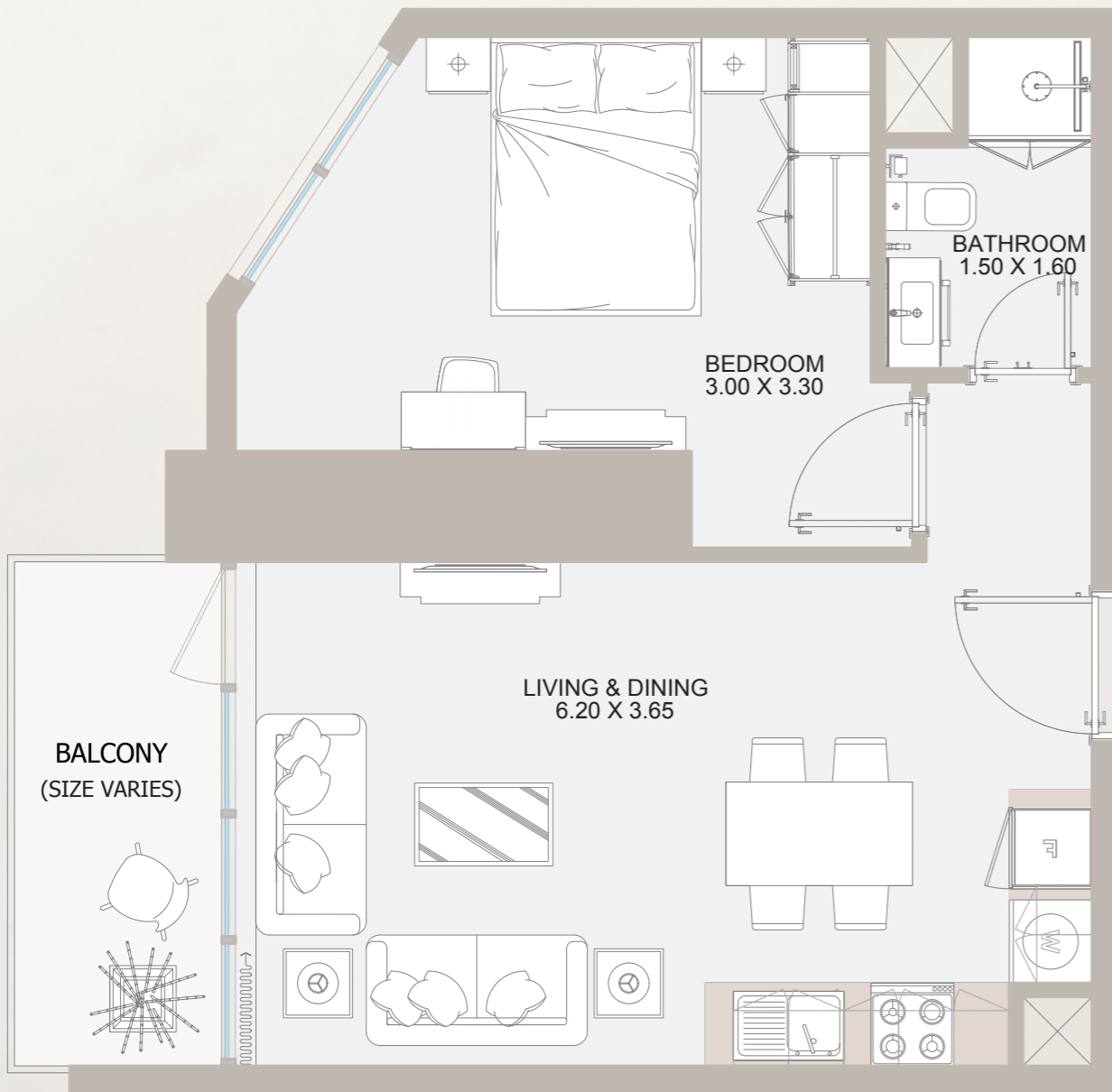


From 7th Floor to 31th Floor

Internal Area	478.13 sq.ft
Outdoor Area	55.5 to 87.2 sq.ft
Total Area	533.6 to 565.4 sq.ft

All drawings and dimensions are approximate. Drawings are not to scale and are subject to change without notice. The developer reserves the right to make revisions. The units are measured at typical floors in the building and columns may vary in size depending on the floor level. The furnishing and accessories shown are for representation only. The availability, length and width of the balcony varies depending on which floor and which orientation the unit is located within the building. There will be slight differences in the internal areas between the same unit types depending on the shaft sizes that go through the units.

1B TYPE - F

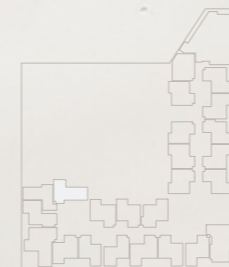
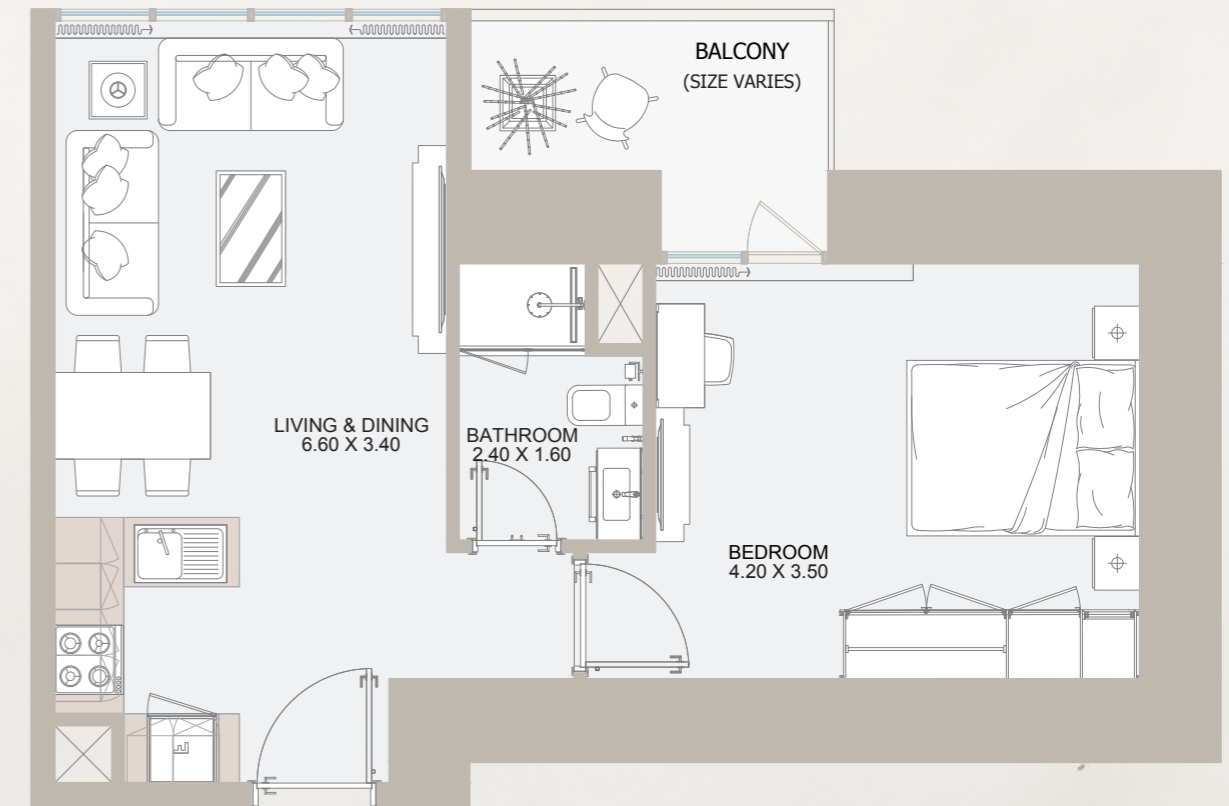


From 7th Floor to 31st Floor

Internal Area	501.8 sq.ft
Outdoor Area	63.1 to 205 sq.ft
Total Area	565 to 706.8 sq.ft

All drawings and dimensions are approximate. Drawings are not to scale and are subject to change without notice. The developer reserves the right to make revisions. The units are measured at typical floors in the building and columns may vary in size depending on the floor level. The furnishing and accessories shown are for representation only. The availability, length and width of the balcony varies depending on which floor and which orientation the unit is located within the building. There will be slight differences in the internal areas between the same unit types depending on the shaft sizes that go through the units.

1B TYPE - G

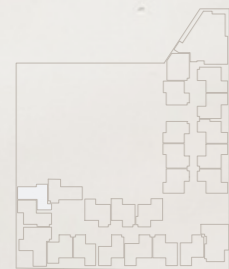
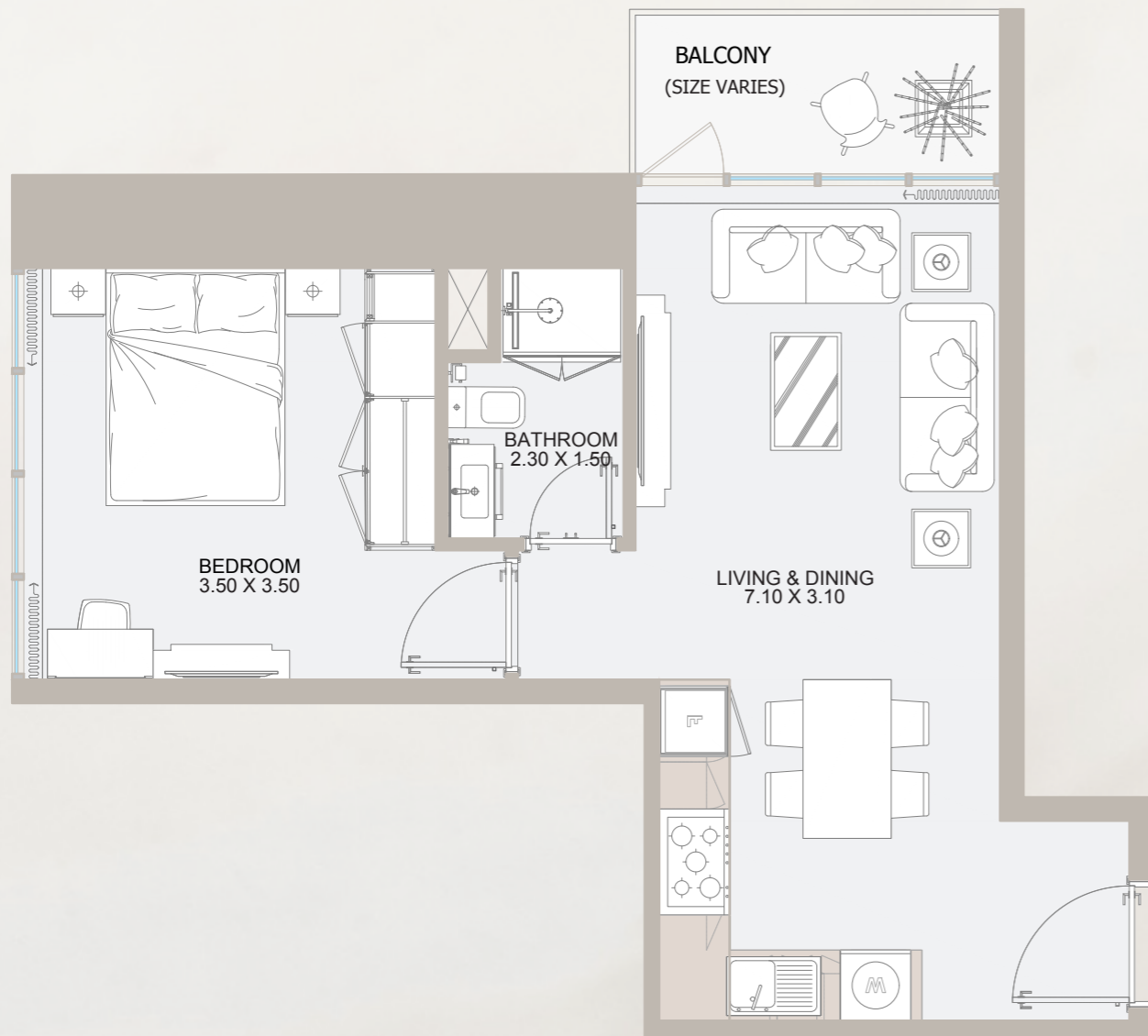


From 27th Floor to 31st Floor

Internal Area	537.23 sq.ft
Outdoor Area	65.4 to 66.3 sq.ft
Total Area	602.6 to 603.5 sq.ft

All drawings and dimensions are approximate. Drawings are not to scale and are subject to change without notice. The developer reserves the right to make revisions. The units are measured at typical floors in the building and columns may vary in size depending on the floor level. The furnishing and accessories shown are for representation only. The availability, length and width of the balcony varies depending on which floor and which orientation the unit is located within the building. There will be slight differences in the internal areas between the same unit types depending on the shaft sizes that go through the units.

1B TYPE - H

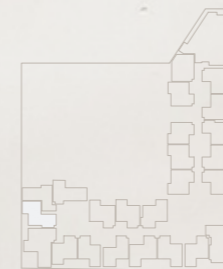
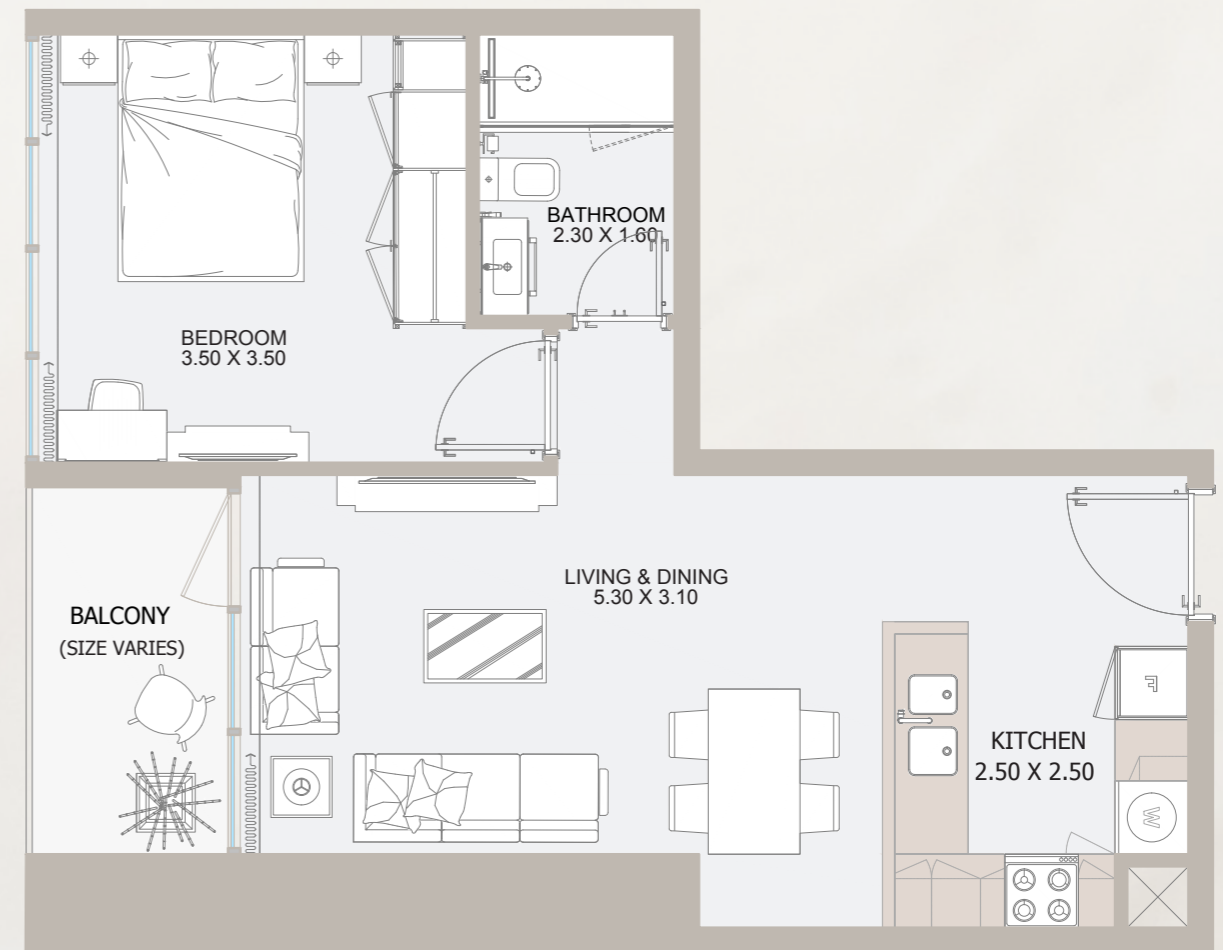


From 27th Floor to 31st Floor

Internal Area	484.59 sq.ft
Outdoor Area	51.24 sq.ft
Total Area	535.83 sq.ft

All drawings and dimensions are approximate. Drawings are not to scale and are subject to change without notice. The developer reserves the right to make revisions. The units are measured at typical floors in the building and columns may vary in size depending on the floor level. The furnishing and accessories shown are for representation only. The availability, length and width of the balcony varies depending on which floor and which orientation the unit is located within the building. There will be slight differences in the internal areas between the same unit types depending on the shaft sizes that go through the units.

1B TYPE - I

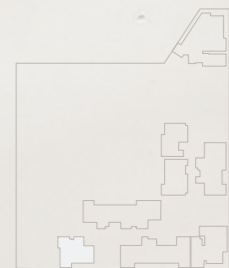


From 27th Floor to 31st Floor

Internal Area	523.77 sq.ft
Outdoor Area	61.24 to 64.04 sq.ft
Total Area	585.01 to 587.81 sq.ft

All drawings and dimensions are approximate. Drawings are not to scale and are subject to change without notice. The developer reserves the right to make revisions. The units are measured at typical floors in the building and columns may vary in size depending on the floor level. The furnishing and accessories shown are for representation only. The availability, length and width of the balcony varies depending on which floor and which orientation the unit is located within the building. There will be slight differences in the internal areas between the same unit types depending on the shaft sizes that go through the units.

2B PENTHOUSE TYPE - A

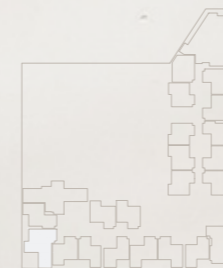
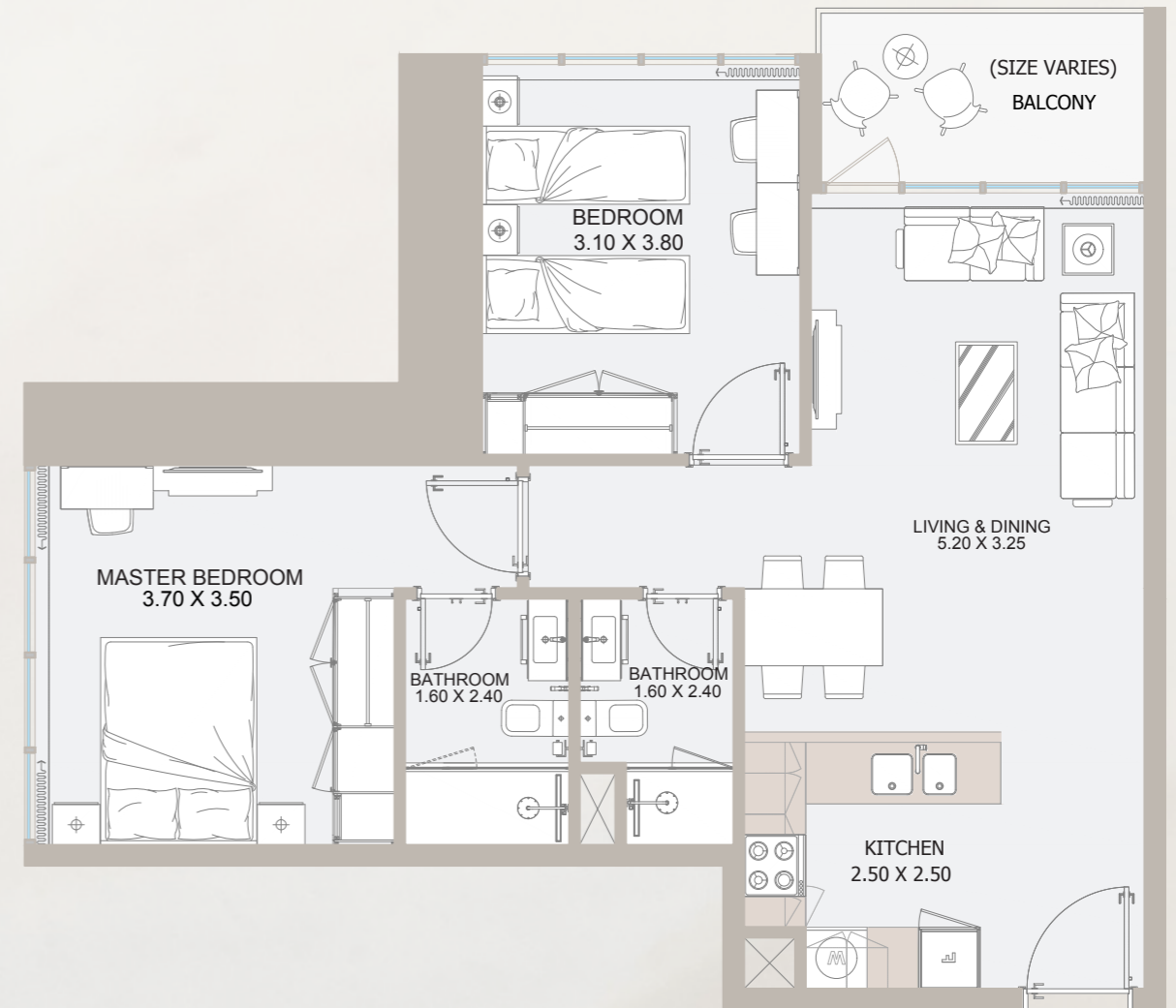


33rd Floor

Internal Area	781.78 sq.ft
Outdoor Area	1,721.36 sq.ft
Total Area	2,503.14 sq.ft

All drawings and dimensions are approximate. Drawings are not to scale and are subject to change without notice. The developer reserves the right to make revisions. The units are measured at typical floors in the building and columns may vary in size depending on the floor level. The furnishing and accessories shown are for representation only. The availability, length and width of the balcony varies depending on which floor and which orientation the unit is located within the building. There will be slight differences in the internal areas between the same unit types depending on the shaft sizes that go through the units.

2B TYPE - A

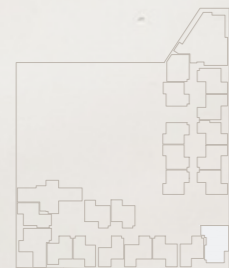
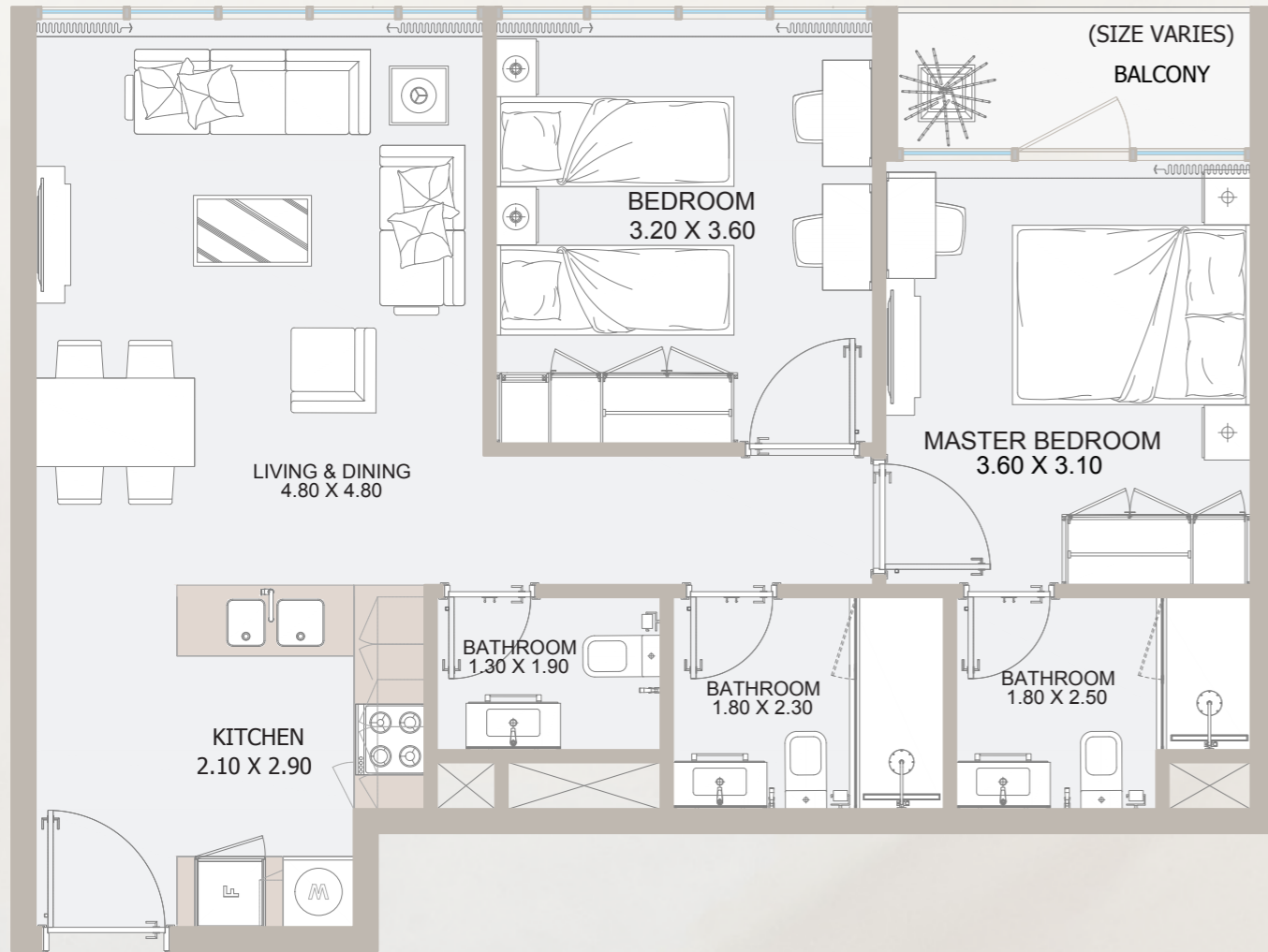


From 7th Floor to 31st Floor

Internal Area	782.53 sq.ft
Outdoor Area	63.50 to 74.05 sq.ft
Total Area	846.04 to 856.59 sq.ft

All drawings and dimensions are approximate. Drawings are not to scale and are subject to change without notice. The developer reserves the right to make revisions. The units are measured at typical floors in the building and columns may vary in size depending on the floor level. The furnishing and accessories shown are for representation only. The availability, length and width of the balcony varies depending on which floor and which orientation the unit is located within the building. There will be slight differences in the internal areas between the same unit types depending on the shaft sizes that go through the units.

2B TYPE - B

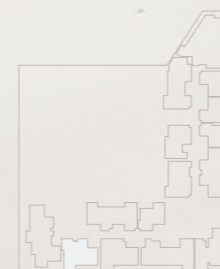
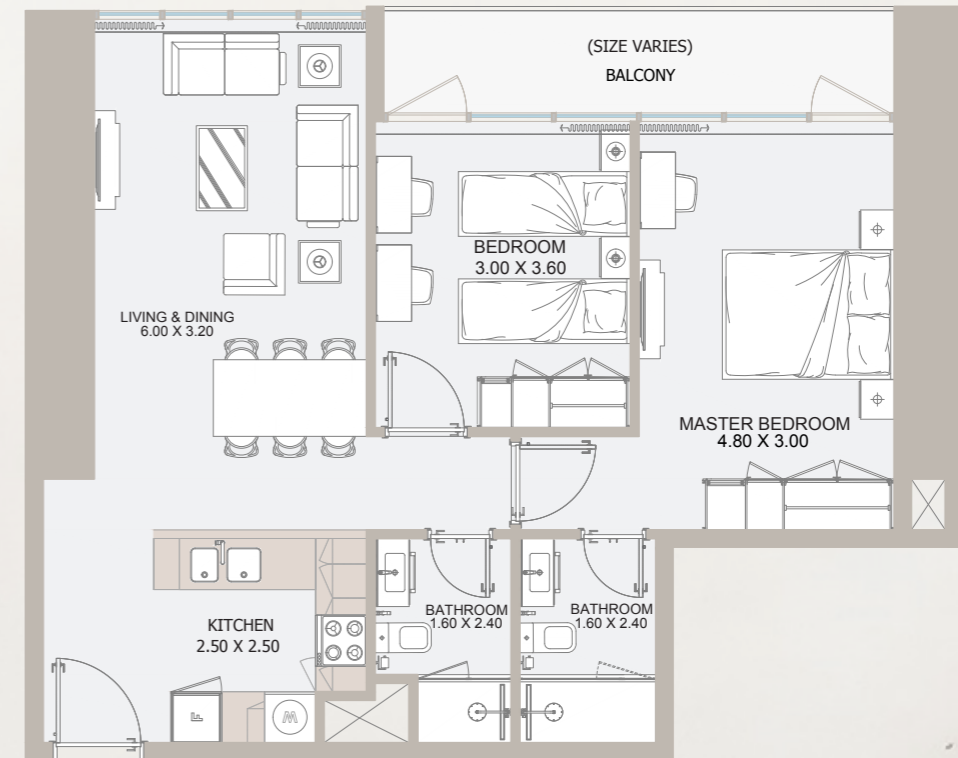


From 7th Floor to 33rd Floor

Internal Area	669.19 to 770.70 sq.ft
Outdoor Area	42.40 to 94.93 sq.ft
Total Area	715.05 to 857.56 sq.ft

All drawings and dimensions are approximate. Drawings are not to scale and are subject to change without notice. The developer reserves the right to make revisions. The units are measured at typical floors in the building and columns may vary in size depending on the floor level. The furnishing and accessories shown are for representation only. The availability, length and width of the balcony varies depending on which floor and which orientation the unit is located within the building. There will be slight differences in the internal areas between the same unit types depending on the shaft sizes that go through the units.

2B TYPE - C

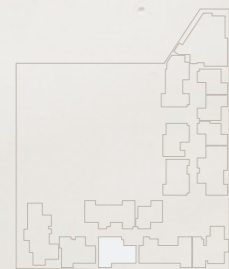
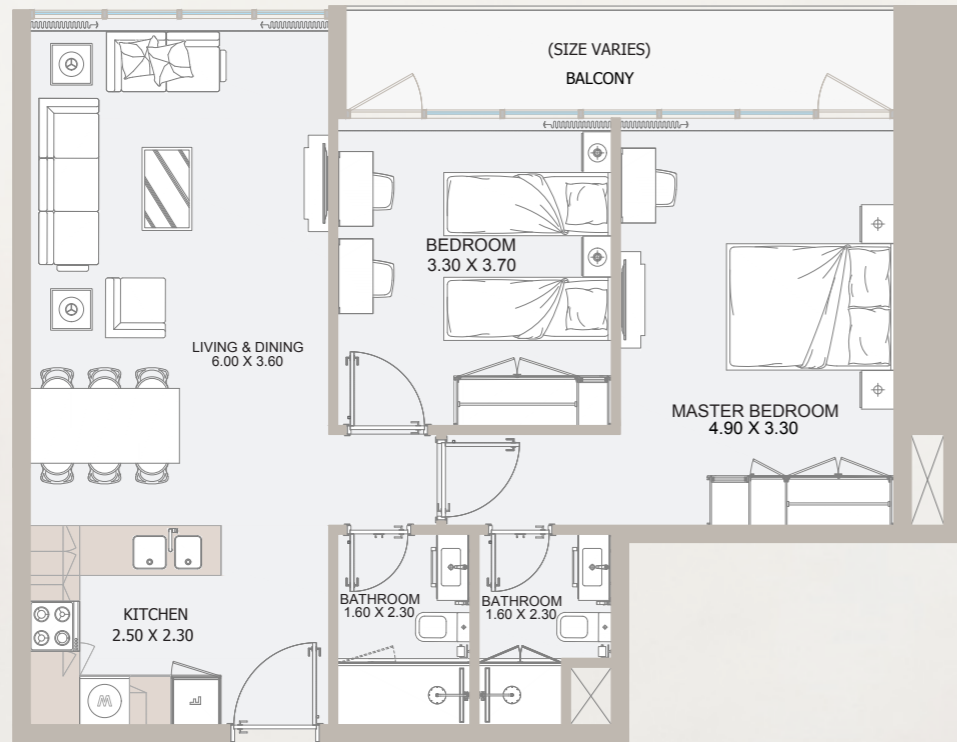


32nd Floor

Internal Area	784.04 sq.ft
Outdoor Area	87.51 sq.ft
Total Area	871.55 sq.ft

All drawings and dimensions are approximate. Drawings are not to scale and are subject to change without notice. The developer reserves the right to make revisions. The units are measured at typical floors in the building and columns may vary in size depending on the floor level. The furnishing and accessories shown are for representation only. The availability, length and width of the balcony varies depending on which floor and which orientation the unit is located within the building. There will be slight differences in the internal areas between the same unit types depending on the shaft sizes that go through the units.

2B TYPE - D

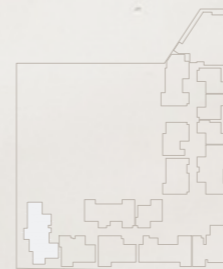


32nd Floor

Internal Area	843.13 sq.ft
Outdoor Area	95.58 sq.ft
Total Area	9,38.72 sq.ft

All drawings and dimensions are approximate. Drawings are not to scale and are subject to change without notice. The developer reserves the right to make revisions. The units are measured at typical floors in the building and columns may vary in size depending on the floor level. The furnishing and accessories shown are for representation only. The availability, length and width of the balcony varies depending on which floor and which orientation the unit is located within the building. There will be slight differences in the internal areas between the same unit types depending on the shaft sizes that go through the units.

3B PENTHOUSE TYPE - A

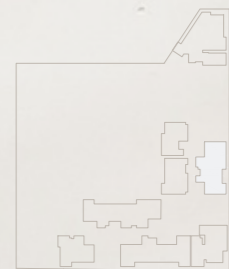
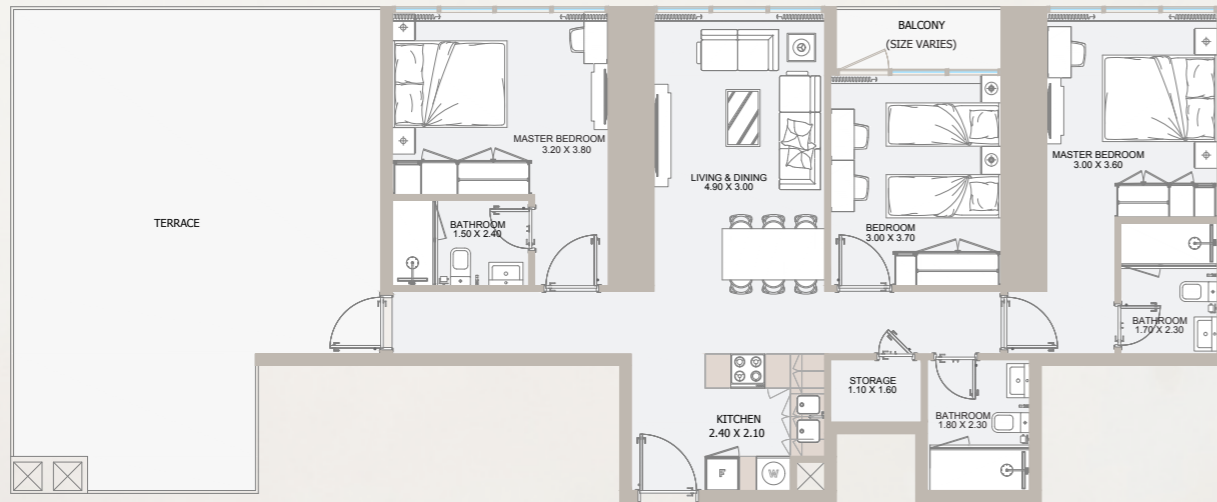


32nd Floor

Internal Area	1,201.57 sq.ft
Outdoor Area	1,610.28 sq.ft
Total Area	2811.85 sq.ft

All drawings and dimensions are approximate. Drawings are not to scale and are subject to change without notice. The developer reserves the right to make revisions. The units are measured at typical floors in the building and columns may vary in size depending on the floor level. The furnishing and accessories shown are for representation only. The availability, length and width of the balcony varies depending on which floor and which orientation the unit is located within the building. There will be slight differences in the internal areas between the same unit types depending on the shaft sizes that go through the units.

3B PENTHOUSE TYPE - B

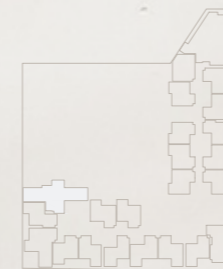
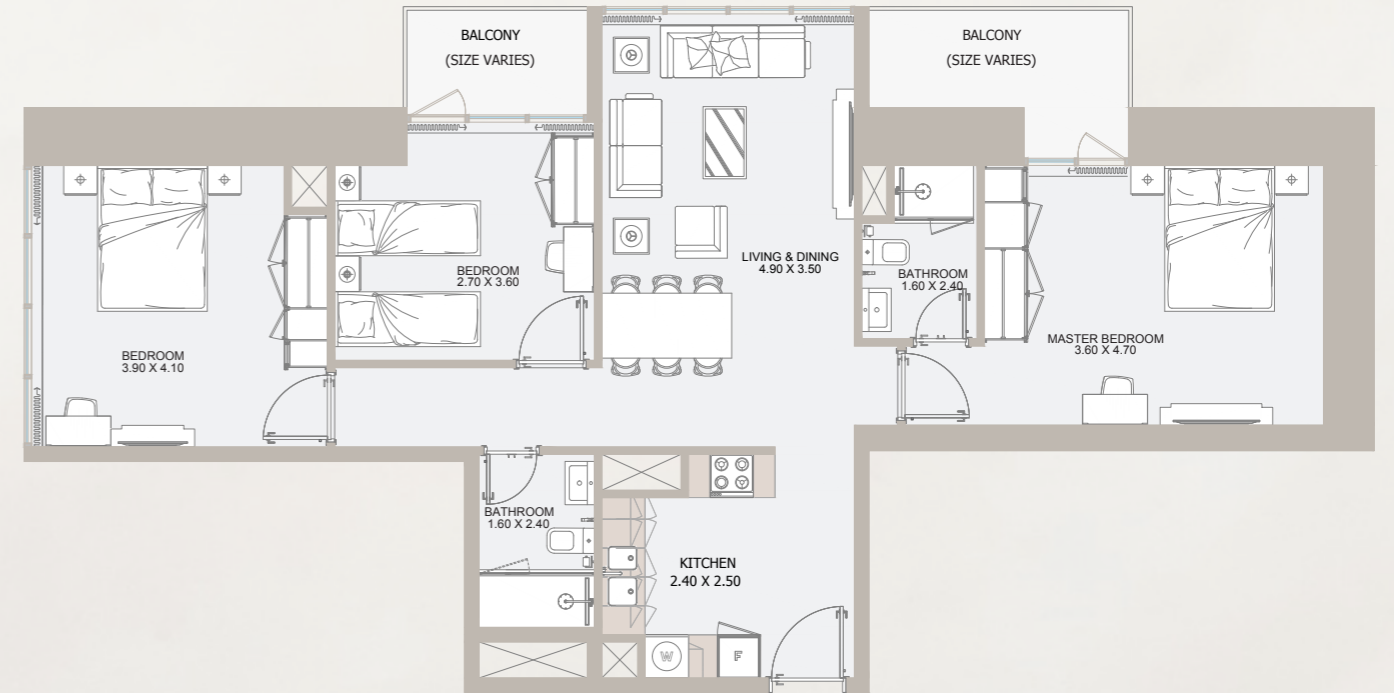


33rd Floor

Internal Area	1,104 sq.ft
Outdoor Area	588 sq.ft
Total Area	1,692 sq.ft

All drawings and dimensions are approximate. Drawings are not to scale and are subject to change without notice. The developer reserves the right to make revisions. The units are measured at typical floors in the building and columns may vary in size depending on the floor level. The furnishing and accessories shown are for representation only. The availability, length and width of the balcony varies depending on which floor and which orientation the unit is located within the building. There will be slight differences in the internal areas between the same unit types depending on the shaft sizes that go through the units.

3B TYPE - A

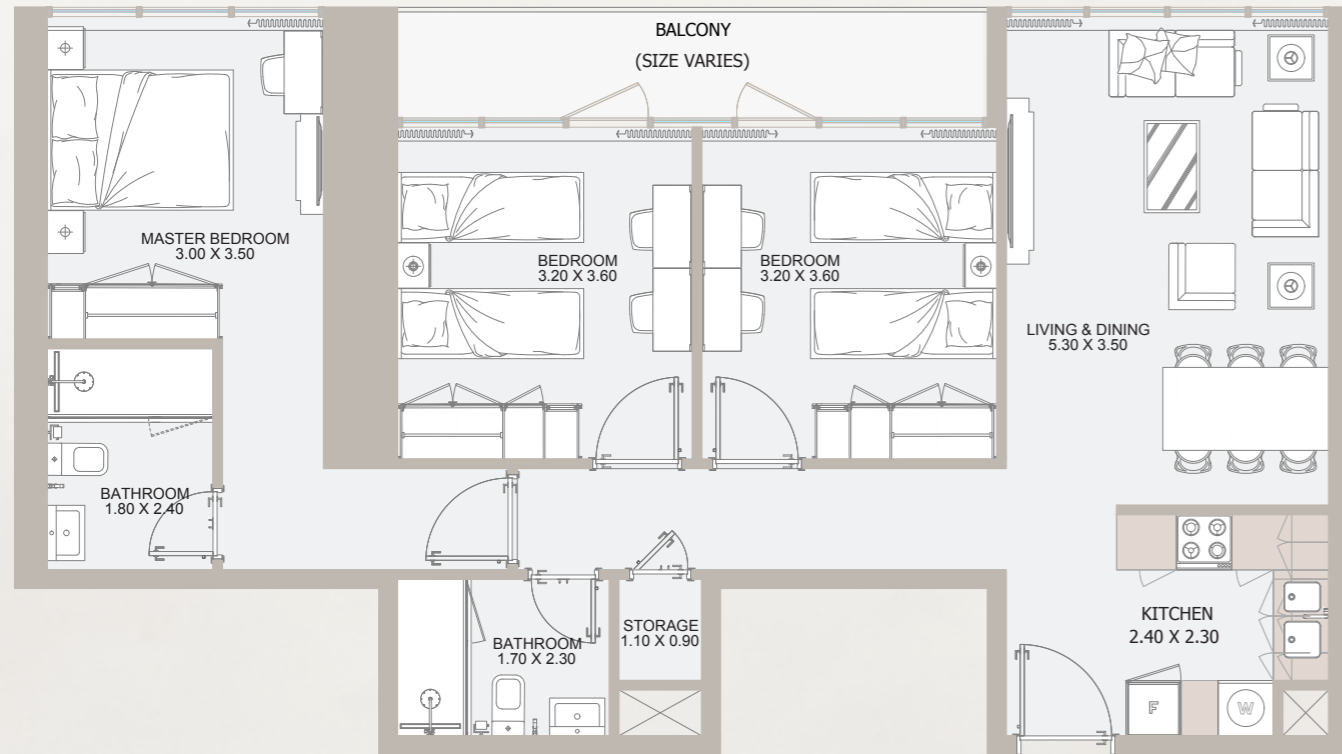


From 7th Floor to 26th Floor

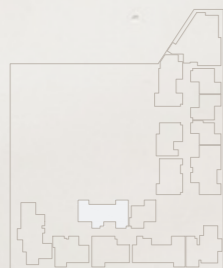
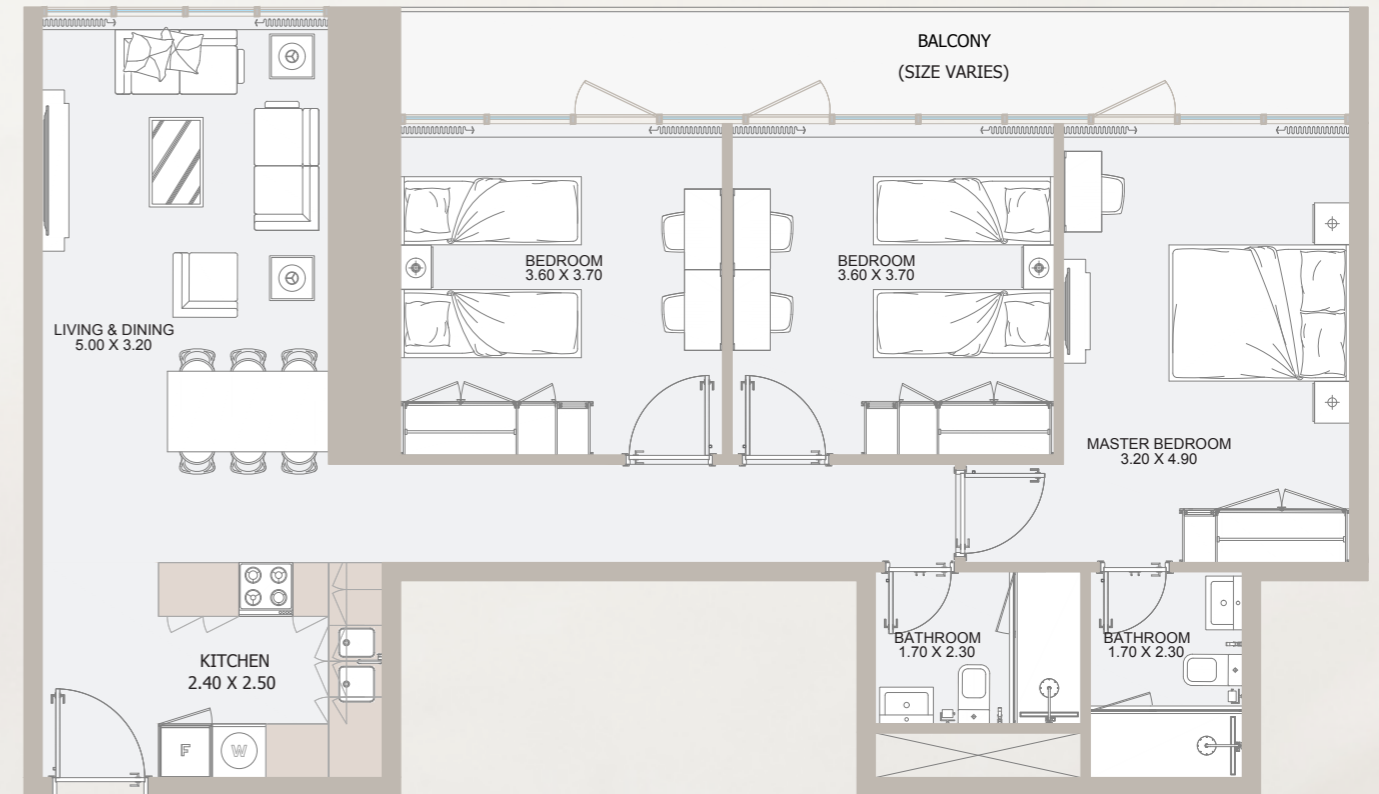
Internal Area	1,094 sq.ft
Outdoor Area	116 to 548 sq.ft
Total Area	1,209 to 1642 sq.ft

All drawings and dimensions are approximate. Drawings are not to scale and are subject to change without notice. The developer reserves the right to make revisions. The units are measured at typical floors in the building and columns may vary in size depending on the floor level. The furnishing and accessories shown are for representation only. The availability, length and width of the balcony varies depending on which floor and which orientation the unit is located within the building. There will be slight differences in the internal areas between the same unit types depending on the shaft sizes that go through the units.

3B TYPE - B



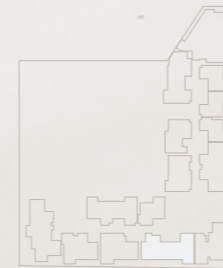
3B TYPE - C



32nd Floor

Internal Area	1,003 sq.ft
Outdoor Area	87 sq.ft
Total Area	1,090 sq.ft

All drawings and dimensions are approximate. Drawings are not to scale and are subject to change without notice. The developer reserves the right to make revisions. The units are measured at typical floors in the building and columns may vary in size depending on the floor level. The furnishing and accessories shown are for representation only. The availability, length and width of the balcony varies depending on which floor and which orientation the unit is located within the building. There will be slight differences in the internal areas between the same unit types depending on the shaft sizes that go through the units.

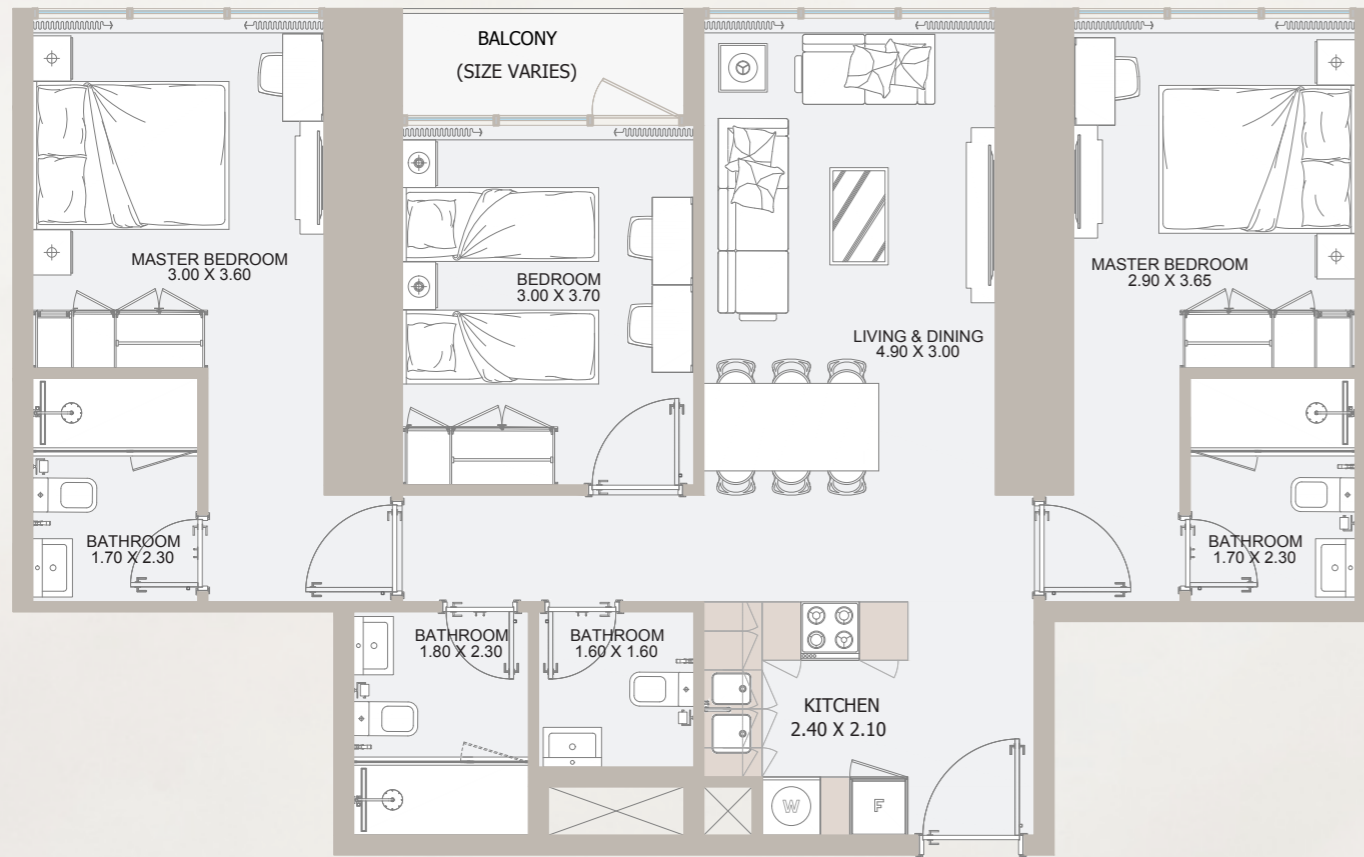


32nd Floor

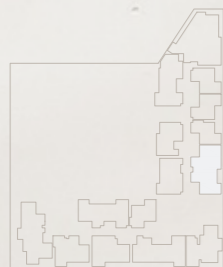
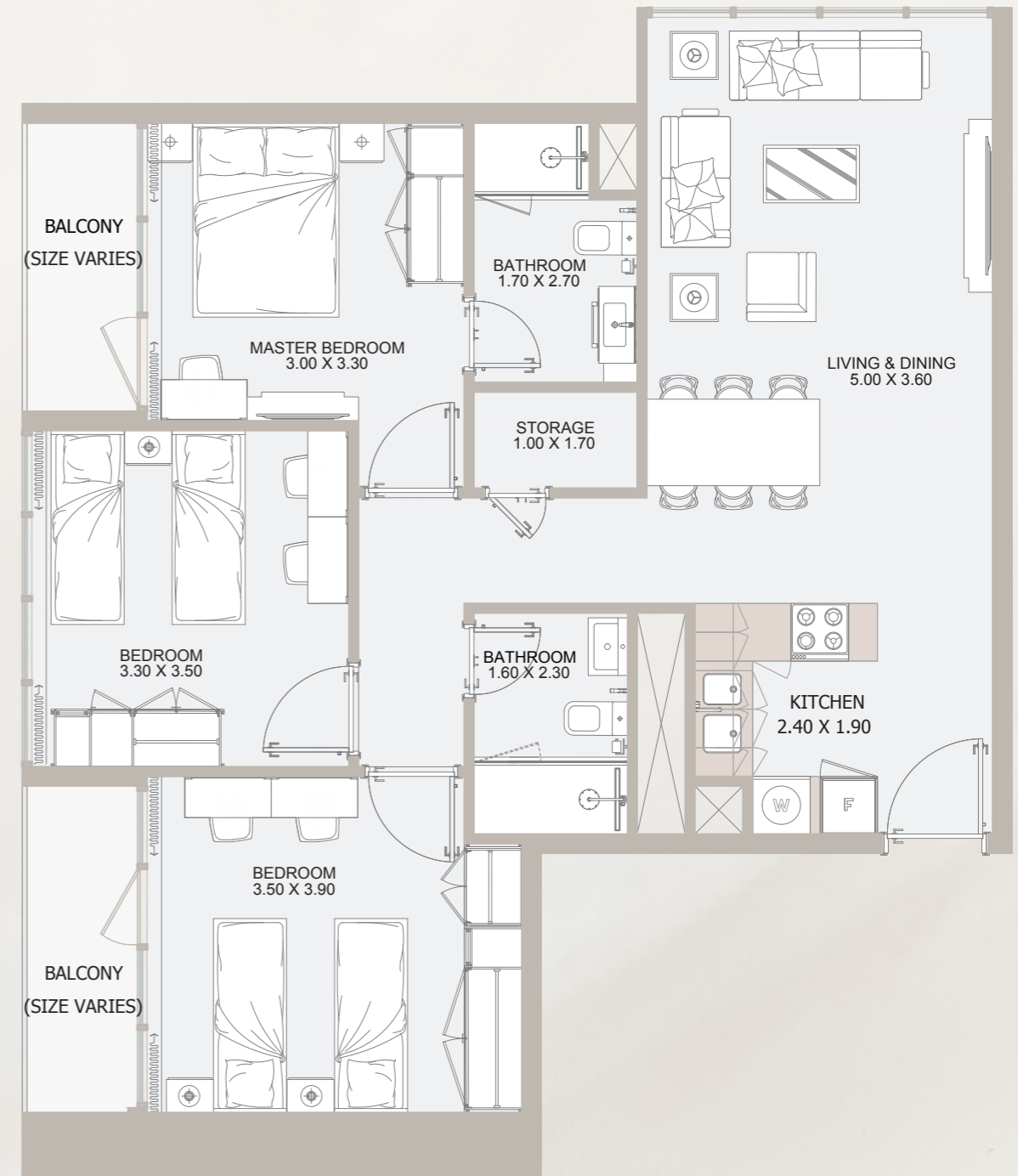
Internal Area	1,070 sq.ft
Outdoor Area	144 sq.ft
Total Area	1,214 sq.ft

All drawings and dimensions are approximate. Drawings are not to scale and are subject to change without notice. The developer reserves the right to make revisions. The units are measured at typical floors in the building and columns may vary in size depending on the floor level. The furnishing and accessories shown are for representation only. The availability, length and width of the balcony varies depending on which floor and which orientation the unit is located within the building. There will be slight differences in the internal areas between the same unit types depending on the shaft sizes that go through the units.

3B TYPE - D



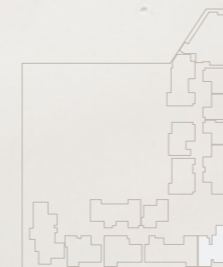
3B TYPE - E



32nd Floor

Internal Area	1,053 sq.ft
Outdoor Area	42 sq.ft
Total Area	1,096 sq.ft

All drawings and dimensions are approximate. Drawings are not to scale and are subject to change without notice. The developer reserves the right to make revisions. The units are measured at typical floors in the building and columns may vary in size depending on the floor level. The furnishing and accessories shown are for representation only. The availability, length and width of the balcony varies depending on which floor and which orientation the unit is located within the building. There will be slight differences in the internal areas between the same unit types depending on the shaft sizes that go through the units.

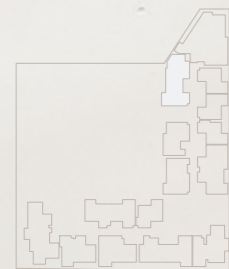
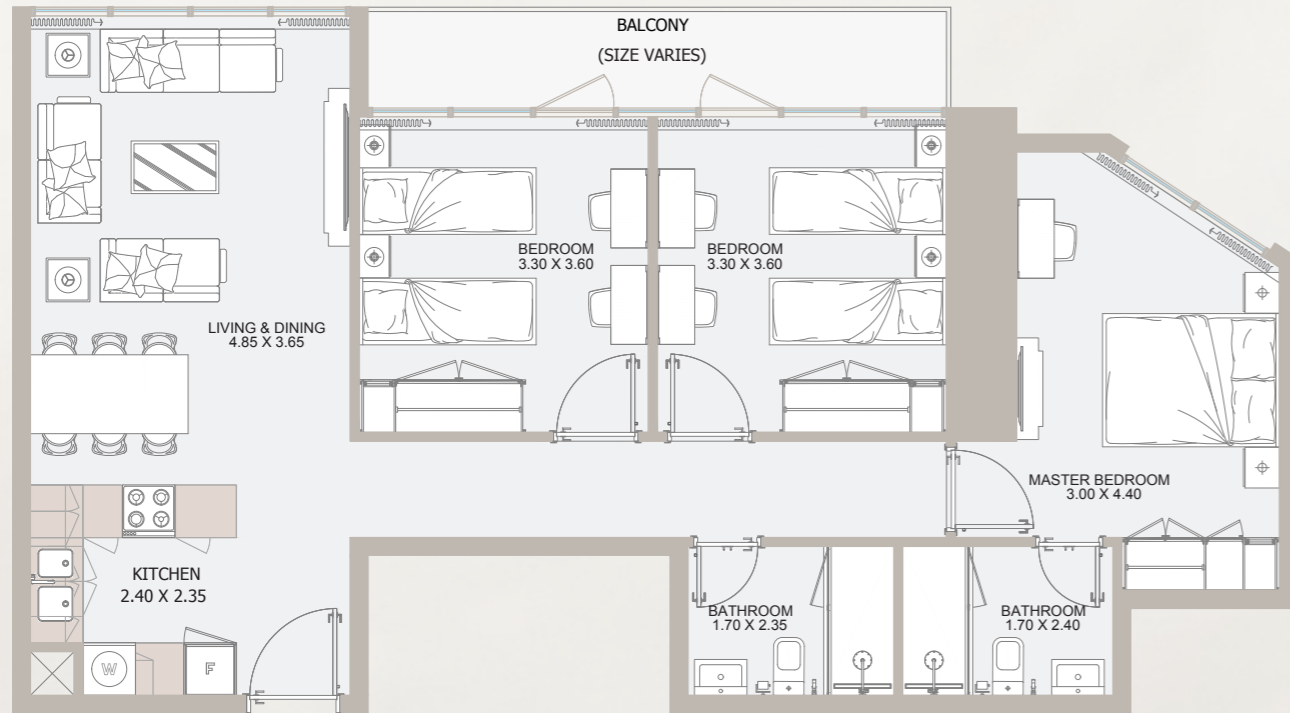


From 32nd Floor to 33rd Floor

Internal Area	926 sq.ft
Outdoor Area	93 sq.ft
Total Area	1,019 sq.ft

All drawings and dimensions are approximate. Drawings are not to scale and are subject to change without notice. The developer reserves the right to make revisions. The units are measured at typical floors in the building and columns may vary in size depending on the floor level. The furnishing and accessories shown are for representation only. The availability, length and width of the balcony varies depending on which floor and which orientation the unit is located within the building. There will be slight differences in the internal areas between the same unit types depending on the shaft sizes that go through the units.

3B TYPE - F

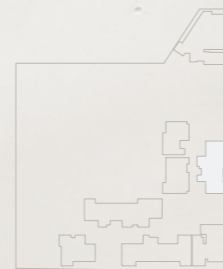


32nd Floor

Internal Area	985 sq.ft
Outdoor Area	94 sq.ft
Total Area	1,079 sq.ft

All drawings and dimensions are approximate. Drawings are not to scale and are subject to change without notice. The developer reserves the right to make revisions. The units are measured at typical floors in the building and columns may vary in size depending on the floor level. The furnishing and accessories shown are for representation only. The availability, length and width of the balcony varies depending on which floor and which orientation the unit is located within the building. There will be slight differences in the internal areas between the same unit types depending on the shaft sizes that go through the units.

4B PENTHOUSE TYPE - A

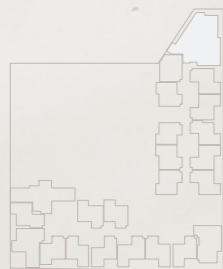


33rd Floor

Internal Area	1,598.97 sq.ft
Outdoor Area	1,281.98 sq.ft
Total Area	2,880.96 sq.ft

All drawings and dimensions are approximate. Drawings are not to scale and are subject to change without notice. The developer reserves the right to make revisions. The units are measured at typical floors in the building and columns may vary in size depending on the floor level. The furnishing and accessories shown are for representation only. The availability, length and width of the balcony varies depending on which floor and which orientation the unit is located within the building. There will be slight differences in the internal areas between the same unit types depending on the shaft sizes that go through the units.

4B TYPE - A

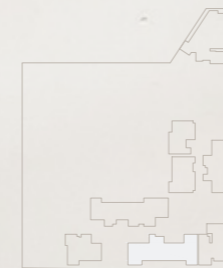
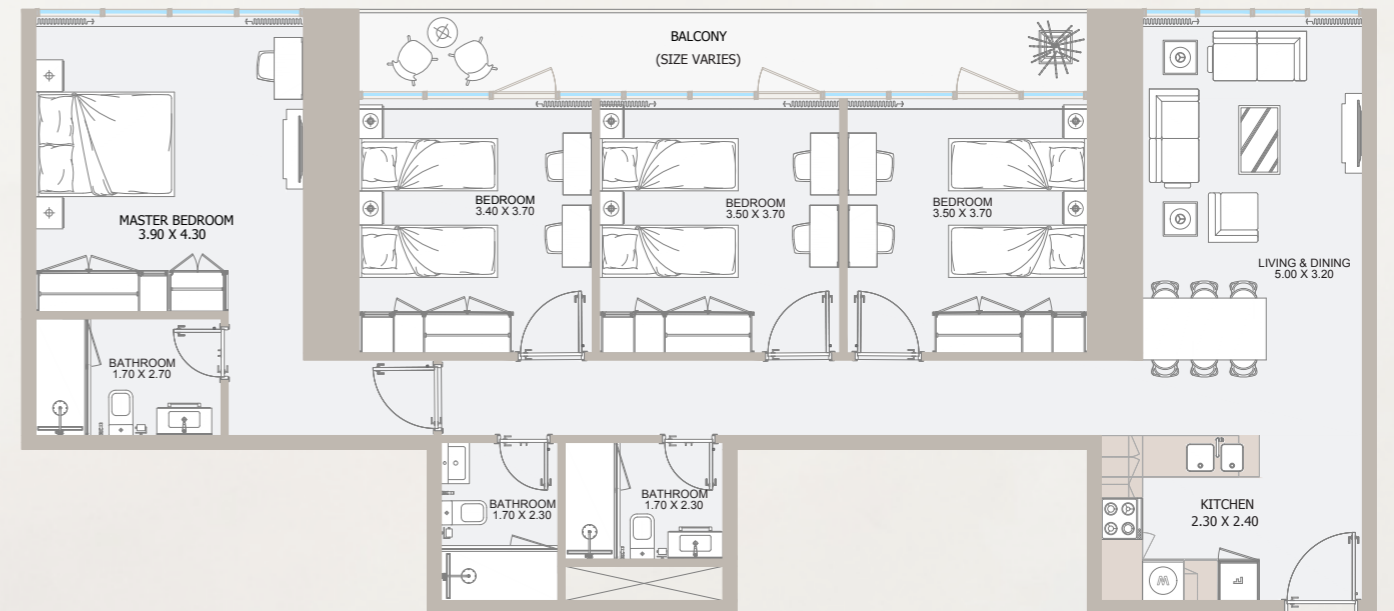


From 7th Floor to 32nd Floor

Internal Area	1,599.08 sq.ft
Outdoor Area	186.75 to 189.33 sq.ft
Total Area	1,785.84 to 1,788.4 sq.ft

All drawings and dimensions are approximate. Drawings are not to scale and are subject to change without notice. The developer reserves the right to make revisions. The units are measured at typical floors in the building and columns may vary in size depending on the floor level. The furnishing and accessories shown are for representation only. The availability, length and width of the balcony varies depending on which floor and which orientation the unit is located within the building. There will be slight differences in the internal areas between the same unit types depending on the shaft sizes that go through the units.

4B TYPE - B

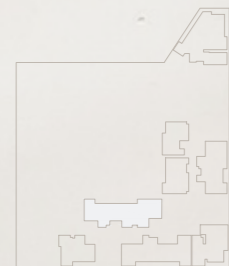
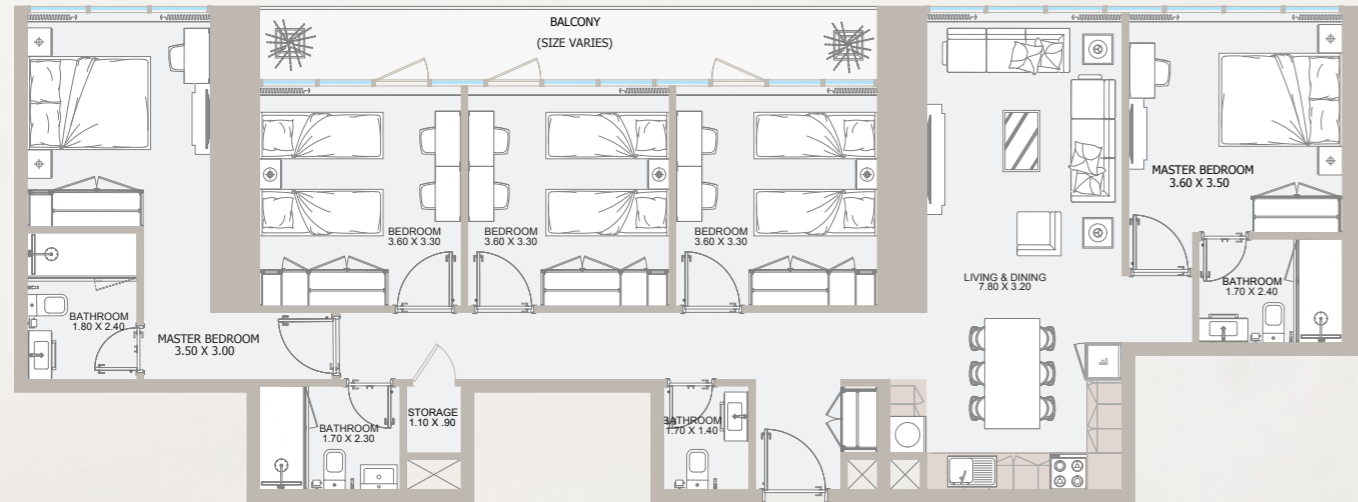


33rd Floor

Internal Area	1,363.67 sq.ft
Outdoor Area	144.23 sq.ft
Total Area	1,507.91 sq.ft

All drawings and dimensions are approximate. Drawings are not to scale and are subject to change without notice. The developer reserves the right to make revisions. The units are measured at typical floors in the building and columns may vary in size depending on the floor level. The furnishing and accessories shown are for representation only. The availability, length and width of the balcony varies depending on which floor and which orientation the unit is located within the building. There will be slight differences in the internal areas between the same unit types depending on the shaft sizes that go through the units.

5B TYPE - A



33rd Floor

Internal Area	1,506.40 sq.ft
Outdoor Area	137.88 sq.ft
Total Area	1,644.29 sq.ft

All drawings and dimensions are approximate. Drawings are not to scale and are subject to change without notice. The developer reserves the right to make revisions. The units are measured at typical floors in the building and columns may vary in size depending on the floor level. The furnishing and accessories shown are for representation only. The availability, length and width of the balcony varies depending on which floor and which orientation the unit is located within the building. There will be slight differences in the internal areas between the same unit types depending on the shaft sizes that go through the units.



ريپورتاج العقارية
Reportage.
Properties

Abu Dhabi-UAE | Head Office

Tamouh Tower
28th Floor, Al Reem Island
P.O. Box: 111949
Tollfree: +971 800 77 55 2
info@reportageuae.com

Dubai-UAE

Anantara Business Tower
3rd Floor, Business Bay
P.O. Box: 27446
Tollfree: +971 800 77 55 2
info@reportageuae.com

Cairo-Egypt

Building 217,
North Teseen St.
New Cairo
T: +20 12 0008 1190
info@reportageeg.com

Istanbul-Türkiye

Levent, Tekfen Tower
8th Floor, Office 31, Büyükdere St.
P.O. Box 34394, Şişli
T: +90 530 774 9595
info@reportage.com.tr

Riyadh-KSA

Building No. 3230
Al Aflaj St., Al Suwaidi
P.O. Box 12791
T: +966 11 215 1110
info@reportageuae.com

Moscow-Russia

Yefremova Street 10s1, k4/4
Bld. Sadovye Kvartaly
P.O. Box 119048
T: +7 (936) 777 22 27
info@reportagerussia.com

For more information, visit reportageuae.com
or call 800 77 55 2 | +971 50 244 1078



Legal Disclaimer:

The information contained in this brochure is confidential and is for the exclusive use of the recipient. This brochure may not be reproduced, distributed, delivered, or furnished to any person without the prior written approval of Reportage Properties. No representation or warranty (expressed or implied) is made or can be given with respect to the accuracy or completeness of the information herein, or that any future offer of units or apartments in the project will conform to the terms described herein. Nothing in this leaflet should be constructed as financial, legal, tax or regulatory advice. All accessories such as electronics, furniture, white goods, decorative elements and so forth included in this brochure are not part of the standard unit and used for illustration purposes only. All plans, layouts, pictures, renderings, information and details included in this brochure are indicative only and may change at any time up to the final 'as built' status in accordance with final designs of the project and regulatory approvals and planning permissions.

R.