

AL MAMSHA  
*Raseel*

نوما  
N A M A



مخطط الطوابق  
FLOOR PLANS



# مخطط الطابق الأرضي

## GROUND FLOOR PLAN



### LEGEND

- 1 BEDROOM - TYPE 09 : 46.50 SQM
- 1 BEDROOM - TYPE 10 : 45.74 - 46.14 SQM
- 1 BEDROOM - TYPE 11 : 46.14 - 52.10 SQM
- 1 BEDROOM - TYPE 12 : 49.72 SQM
- 1 BEDROOM - TYPE 13 : 47.62 SQM
- 2 BEDROOM - TYPE 07 : 91.18 SQM
- 3 BEDROOM - TYPE 03 : 126.91 SQM



800 253323  
almamsha.ae



# مخطط الطابق الأول

1,3,5,7 & 9

## FLOOR PLAN



WATERPARK VIEW

### LEGEND

- 1 BEDROOM - TYPE 09 : 46.50 SQM
- 1 BEDROOM - TYPE 10 : 45.74 - 46.14 SQM
- 1 BEDROOM - TYPE 11 : 46.14 - 52.10 SQM
- 1 BEDROOM - TYPE 12 : 49.72 SQM
- 1 BEDROOM - TYPE 13 : 47.62 SQM
- 2 BEDROOM - TYPE 07 : 91.18 SQM
- 3 BEDROOM - TYPE 03 : 126.91 SQM



COURTYARD VIEW



POOL VIEW



800 253323

almamsha.ae



almamshauae



Alef

# مخطط الطابق الأول 2, 4, 6 & 8 FLOOR PLAN



## LEGEND

- 1 BEDROOM - TYPE 09 : 46.50 SQM
- 1 BEDROOM - TYPE 10 : 45.74 - 46.14 SQM
- 1 BEDROOM - TYPE 11 : 46.14 - 52.10 SQM
- 1 BEDROOM - TYPE 12 : 49.72 SQM
- 1 BEDROOM - TYPE 13 : 47.62 SQM
- 2 BEDROOM - TYPE 07 : 91.18 SQM
- 3 BEDROOM - TYPE 03 : 126.91 SQM



800 253323  
almamsha.ae



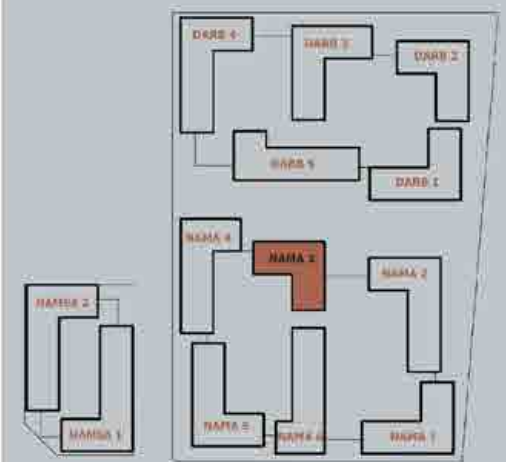
AL MAMSHA  
*Raseel*

نما  
N A M A

مخطط الوحدات  
UNIT PLANS



AL MAMSHA *Rasheed* NAMA 3



**1 BEDROOM - TYPE G-1B10B**  
G03, G06, G11

INTERNAL	: 46.14 sq. m.		496.65 sq. ft.
BALCONY	: 3.39 sq. m.		36.49 sq. ft.
GARDEN	: 22.20 sq. m.		238.96 sq. ft.
TERRACE	: -		
<b>TOTAL NET</b>	<b>: 71.73 sq. m.</b>	<b> </b>	<b>772.09 sq. ft.</b>
<b>TOTAL GROSS</b>	<b>: 83.59 sq. m.</b>	<b> </b>	<b>899.76 sq. ft.</b>

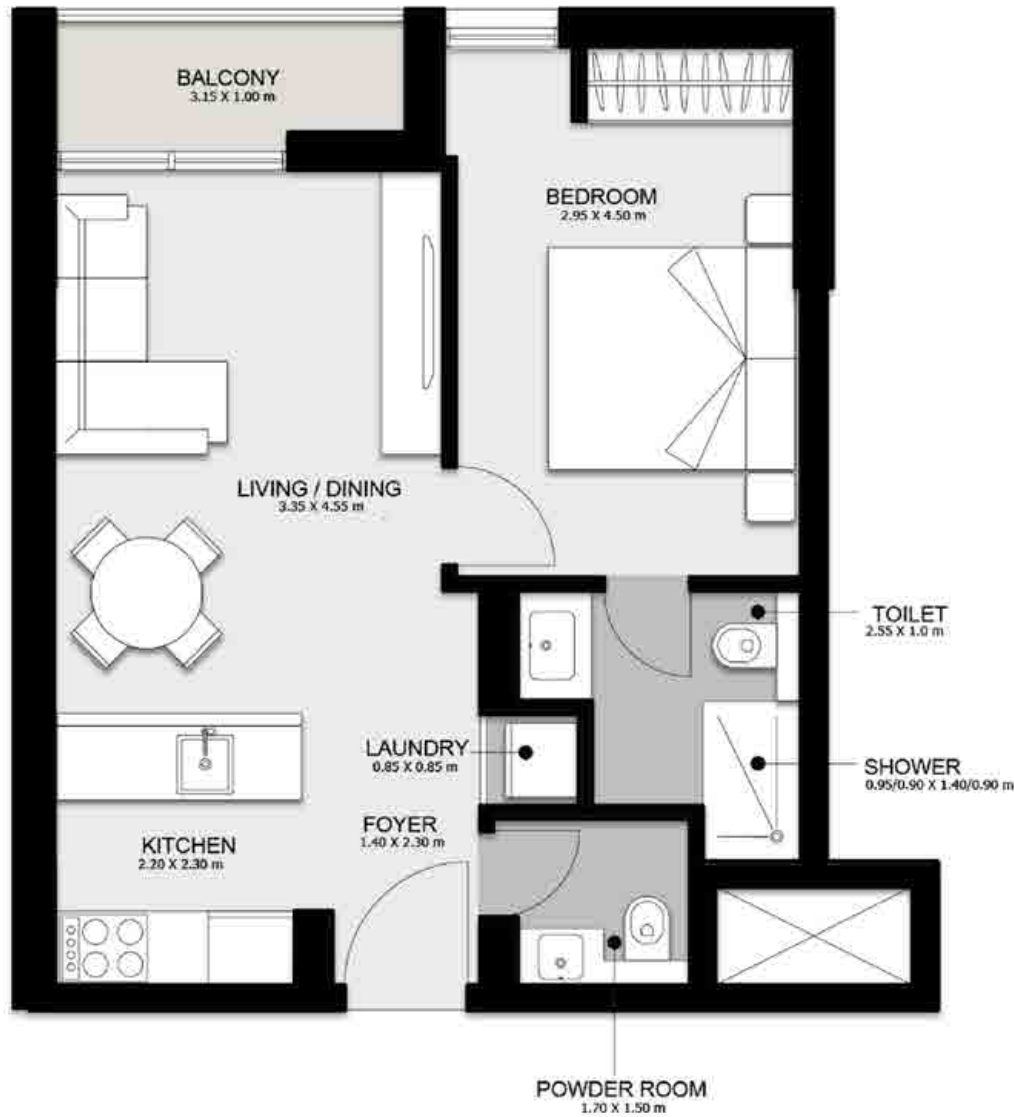
NOTES:  
 1. Measurements are indicative in metric and imperial excluding construction tolerance. 2. Plobs / Unit dimensions may vary from brochure. 3. All images used are for illustrative purposes only. 4. Unless stated otherwise, all fittings and interior decorative items shown are for illustrative purposes only and should not be a part of the handing over items. 5. The developer reserves the right to make alterations, at its absolute discretion, without any liability whatsoever up to the final 'as built' status.



GROUND LEVEL

800 253323 | [almamsha.ae](http://almamsha.ae) |

An experience by  
  
 Alef



LEVEL: 1, 3, 5, 7, & 9



LEVEL: 2, 4, 6 & 8

AL MAMSHA *Raseel* NAMA 3



**1 BEDROOM - TYPE 1B10B**

106, 206, 306, 406, 506, 606, 706, 806, 906

INTERNAL	: 46.48 sq. m.		500.31 sq. ft.
BALCONY	: 3.45 sq. m.		37.14 sq. ft.
GARDEN	: -		
TERRACE	: -		
<b>TOTAL NET</b>	<b>: 49.93 sq. m.</b>	<b> </b>	<b>537.44 sq. ft.</b>
<b>TOTAL GROSS</b>	<b>: 61.89 sq. m.</b>	<b> </b>	<b>666.14 sq. ft.</b>

**NOTES:**

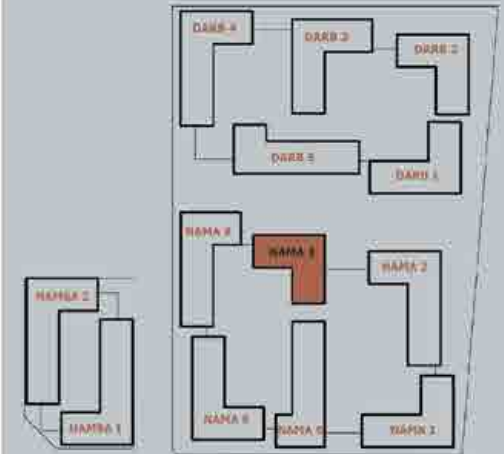
1. Measurements are indicative in metric and imperial excluding construction tolerance.
2. Plot / unit dimensions may vary from brochure.
3. All images used are for illustrative purposes only.
4. Unless stated otherwise, all fittings and interior decorative items shown are for illustrative purposes only and should not be a part of the handing over items.
5. The developer reserves the right to make alterations, at its absolute discretion, without any liability whatsoever up to the final 'as built' status.

800 253323 | [al-mamsha.ae](http://al-mamsha.ae)

[al-mamsha.ae](https://www.facebook.com/al-mamsha.ae)

An experience by





**2 BEDROOM - TYPE 2807A**

109, 309, 509, 709, 909

INTERNAL	: 91.18 sq. m.	981.45 sq. ft.
BALCONY	: 6.78 sq. m.	72.98 sq. ft.
GARDEN	: -	
TERRACE	: -	
<b>TOTAL NET</b>	<b>: 97.96 sq. m.</b>	<b>  1054.43 sq. ft.</b>
<b>TOTAL GROSS</b>	<b>: 121.42 sq. m.</b>	<b>  1306.93 sq. ft.</b>

**NOTES:**

1. Measurements are indicative in metric and imperial excluding construction tolerance. 2. Floor 1 unit dimensions may vary from brochure. 3. All images used are for illustrative purposes only. 4. Unless stated otherwise, all fittings and interior decorative items shown are for illustrative purposes only and should not be a part of the handing over items. 5. The developer reserves the right to make alterations, at its absolute discretion, without any liability whatsoever up to the final 'as built' status.



LEVEL 1, 3, 5, 7, & 9

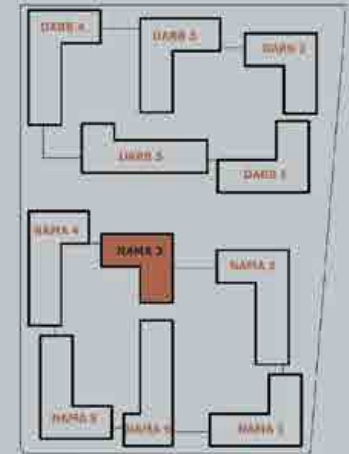
800 253323 | [almamsha.ae](http://almamsha.ae)

[almamshauae](https://www.instagram.com/almamshauae)

An experience by



Alef



**2 BEDROOM - TYPE G-2B07B**

G08

INTERNAL	: 91.18 sq. m.		981.45 sq. ft.
BALCONY	: 6.78 sq. m.		72.98 sq. ft.
GARDEN	: 43.94 sq. m.		472.97 sq. ft.
TERRACE	: -		
<b>TOTAL NET</b>	<b>: 141.90 sq. m.</b>	<b> </b>	<b>1527.40 sq. ft.</b>

**TOTAL GROSS : 165.36 sq. m. | 1779.90 sq. ft**

**NOTES:**

1. Measurements are indicative in metric and imperial excluding construction tolerance.
2. Plots / Unit dimensions may vary from brochure.
3. All images used are for illustrative purposes only.
4. Unless stated otherwise, all fittings and interior decorative items shown are for illustrative purposes only and should not be a part of the handing over items.
5. The developer reserves the right to make alterations, at its absolute discretion, without any liability whatsoever up to the final 'as built' status.



GROUND LEVEL

800 253323 | [almamsha.ae](http://almamsha.ae)

[almamshauae](https://www.instagram.com/almamshauae)

An experience by





LEVEL 1, 3, 5, 7, 8, 9

# AL MAMSHA *Raseel* NAMA 3



## 3 BEDROOM - TYPE 3B03A



114, 314, 514, 714, 914

INTERNAL	:	126.91 sq. m.		1366.05 sq. ft.
BALCONY	:	10.17 sq. m.		109.47 sq. ft.
GARDEN	:	-		
TERRACE	:	-		
<b>TOTAL NET</b>	:	<b>137.08 sq. m.</b>		<b>1475.52 sq. ft.</b>
<b>TOTAL GROSS</b>	:	<b>169.91 sq. m.</b>		<b>1828.85 sq. ft.</b>

### NOTES:

1. Measurements are indicative in metric and imperial excluding construction tolerance. 2. Plots / unit dimensions may vary from brochure. 3. All images used are for illustrative purposes only. 4. Unless stated otherwise, all fittings and interior decorative items shown are for illustrative purposes only and should not be a part of the handing over items. 5. The developer reserves the right to make alterations, at its absolute discretion, without any liability whatsoever up to the final 'as built' status.

800 253323 | [almamsha.ae](http://almamsha.ae)

  [almamshauae](https://www.instagram.com/almamshauae)

An experience by







الف  
Alef