



Elevate Your Living
Experience.

RADIANT BOULEVARD

PART OF RADIANT SQUARE



About Radiant.

At Radiant Real Estate, we're dedicated to creating sustainable communities that enrich the lives of our residents and the surrounding neighborhoods. We aim to deliver high-quality properties that meet the needs and aspirations of our customers, while also contributing to the overall well-being of the communities we serve. Our commitment to integrity, transparency, and excellence in all aspects of our business is reflected in everything we do, and we strive to be a trusted and respected partner for our customers, investors, and stakeholders.



Radiant Square: Iconic Towers with Stunning Views.

Radiant Square is an iconic mixed-use tower located in the heart of Reem Island. Offering stunning sea views and spacious office spaces, this development is the epitome of luxury living. With its 7 podiums and towers with up to 44 floors, Radiant Square is a testament to innovative design and construction, providing a unique and unparalleled experience for its residents and visitors alike. Whether you're looking for a duplex unit with a view of the sea or an office space that inspires productivity, Radiant Square has something for everyone.



Where Modern Living
Meets Radiant Style.



About Radiant Boulevard.

Radiant Boulevard is a remarkable high-rise building located in the bustling area of Reem Island. Overlooking the Shams Boutik Mall and a vast Boulevard, it offers an ideal choice for larger families seeking a comfortable and convenient lifestyle. Boasting 7 podiums and 29 floors, the building provides ample living space with stunning views of the city. Radiant Boulevard is a prime example of modern design and luxurious living, providing its residents with an unparalleled experience of comfort and convenience.

—
A New Standard of Luxury Living.

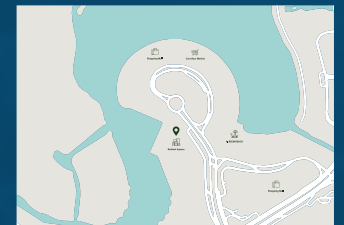


Discover the Luxurious Lifestyle of Reem Island.

Reem Island is a vibrant and thriving community located in Abu Dhabi. This beautiful island is known for its luxurious living, world-class amenities, and stunning waterfront views. With a range of residential and commercial properties, Reem Island offers something for everyone, from families to young professionals. The community is well-connected with easy access to major highways, making it convenient to get to and from the city center. With its lush parks, trendy restaurants, and luxurious shopping centers, Reem Island is the perfect place to call home for those seeking a modern and cosmopolitan lifestyle in Abu Dhabi.

Landmarks Nearby:

- 📍 3 min to Reem Mall
- 📍 4 min to Reem Hospital
- 📍 1 min to Carrefour Market
- 📍 3 min to Al Fay Park
- 📍 3 min to Shams Boutik
- 📍 5min to Galleria Mall (Sea & Galleria Mall View)





—
Coastal Living at its Finest.

Our Amenities.

 +1200 Apartments

 50 Commercial Spaces

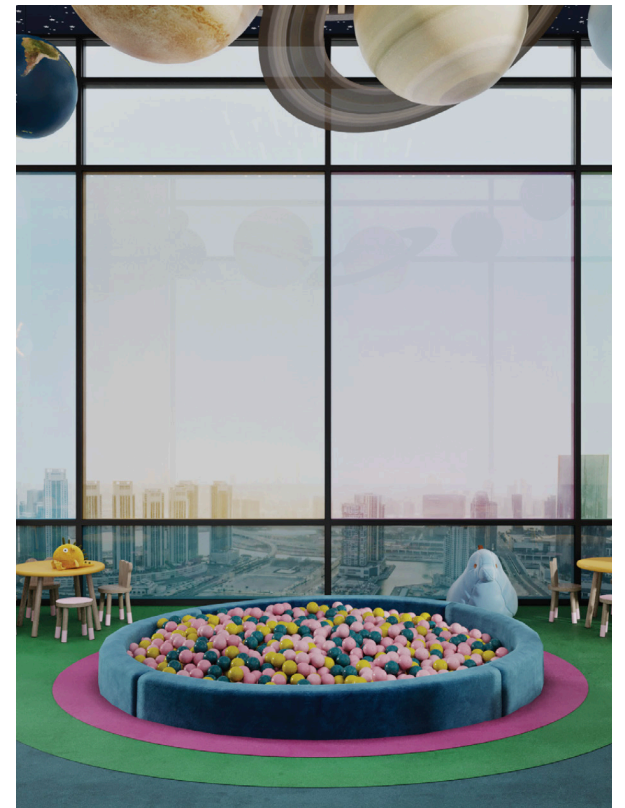
 Cafes/Restaurants With
Stunning Views

 3 Swimming Pools

 Variety of Kids Areas

 Gym





Premier Pool & Gym Facilities.

We believe in providing our residents with exceptional amenities that enhance their quality of life. Our pool and gym facilities are no exception. Our state-of-the-art gym is equipped with the latest fitness equipment and provides a range of exercise options for residents to stay healthy and active. Meanwhile, our swimming pool offers a refreshing escape from the city heat, with a stunning view of the surrounding area. Whether you're looking to start your day with a workout or unwind after a long day at work, our pool and gym facilities provide the perfect space for you to achieve your fitness goals.



Relax and Recharge:
Enjoy the Pool & Gym at Radiant Towers.



Connecting Lobbies.

At Radiant Real Estate, we understand that convenience and comfort are essential for our residents. Our buildings feature well-designed connecting lobbies that provide a seamless transition between indoor and outdoor spaces, creating a welcoming atmosphere for residents and guests. Additionally, our high-speed elevators provide easy and efficient access to all floors, ensuring that residents can move around the building with ease. With a focus on quality and innovation, our buildings are designed to provide a seamless living experience, with every detail carefully considered to ensure the utmost convenience and comfort for our residents.





A Grand Lobby for
a Luxurious Lifestyle.



Living Area.

At Radiant Square, we understand that a comfortable and luxurious living experience is essential for our residents. Our living areas are designed to provide a sense of space and openness, with ample natural light and stunning views of the surrounding area. Whether you're relaxing with family or entertaining guests, our living areas provide the perfect space to unwind and enjoy life to the fullest. With a focus on high-quality finishes and modern design, Radiant Square offers an unparalleled living experience that is both stylish and functional.





At Home in Comfort: Relaxing and Spacious Bedrooms by Design.

A bedroom is a personal sanctuary where you can relax, unwind, and recharge. At our properties, we prioritize the comfort and wellbeing of our residents. Each bedroom is designed with spaciousness, natural light, and high-quality materials to ensure a restful and rejuvenating night's sleep. Our range of bedroom configurations caters to individual preferences and needs, with options for studios, one-, two-, or multi-bedroom apartments. Whether you need a peaceful retreat from a busy day or a cozy spot for reading, we provide a comfortable and stylish space that feels like home.

Luxurious Finishing Brands for Unmatched Comfort.

Radiant Square offers luxurious living spaces with high-end finishes and top-of-the-line appliances. The bathrooms feature elegant tiling and fixtures from Villeroy and Boch, Hansgrohe, and RAK, while the kitchens are equipped with sleek ELBA appliances.

- Villeroy and Boch
- Hansgrohe
- ELBA
- RAK
- MK

We believe that these brands, with their reputation for quality and innovation, help us provide the best possible living experience for our residents.

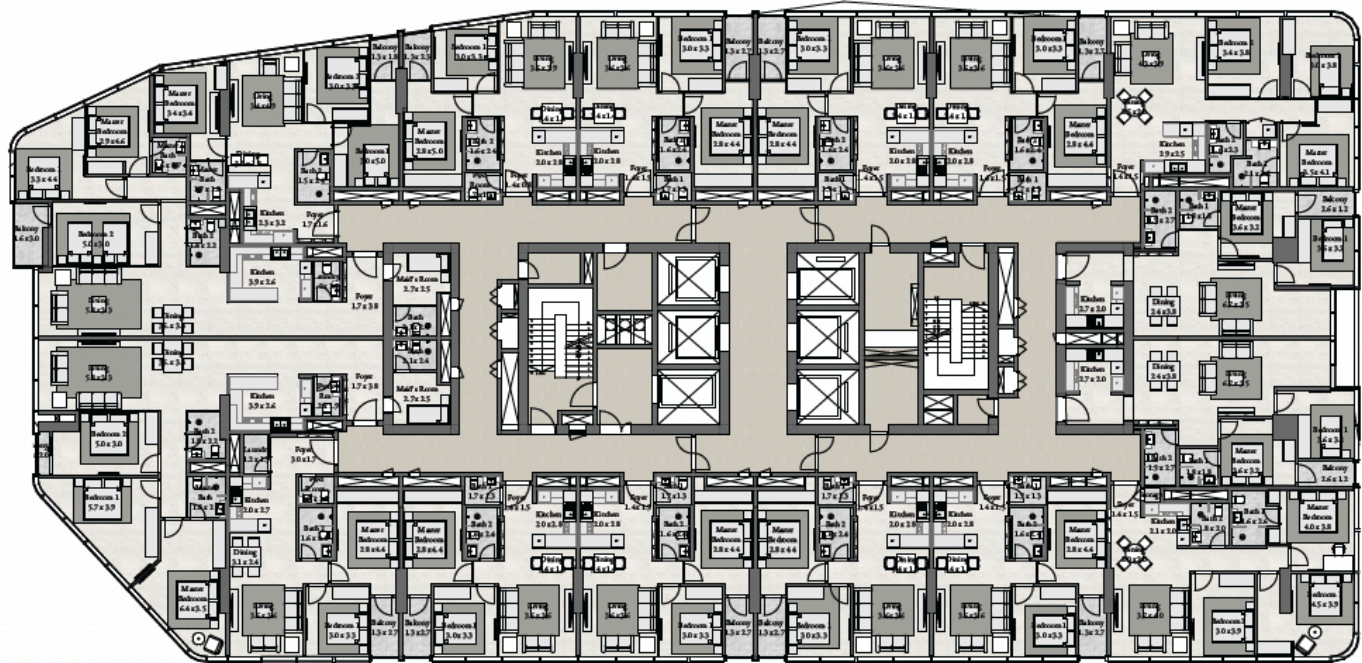


—
For Ultimate Comfort.

Overall
Floorplans.

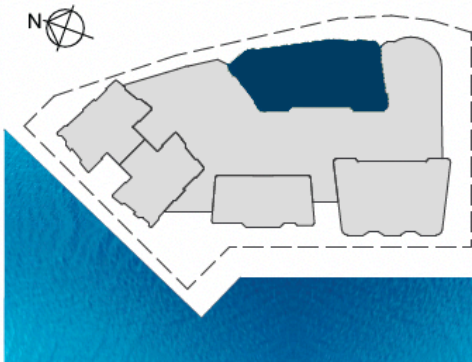


- Type 6-C22(1545.37 sqft)
3 Bed. + Maid + Balcony
- Type 6-C23(945.17 sqft)
3 Bedroom + Balcony
- Type 6-B27(751.85 sqft)
2 Bedroom + Balcony
- Type 6-B28(782.53 sqft)
2 Bedroom + Balcony
- Type 6-B29(782.53 sqft)
2 Bedroom + Balcony
- Type 6-B28(782.53 sqft)
2 Bedroom + Balcony
- Type 6-C24(1084.14 sqft)
3 Bedroom



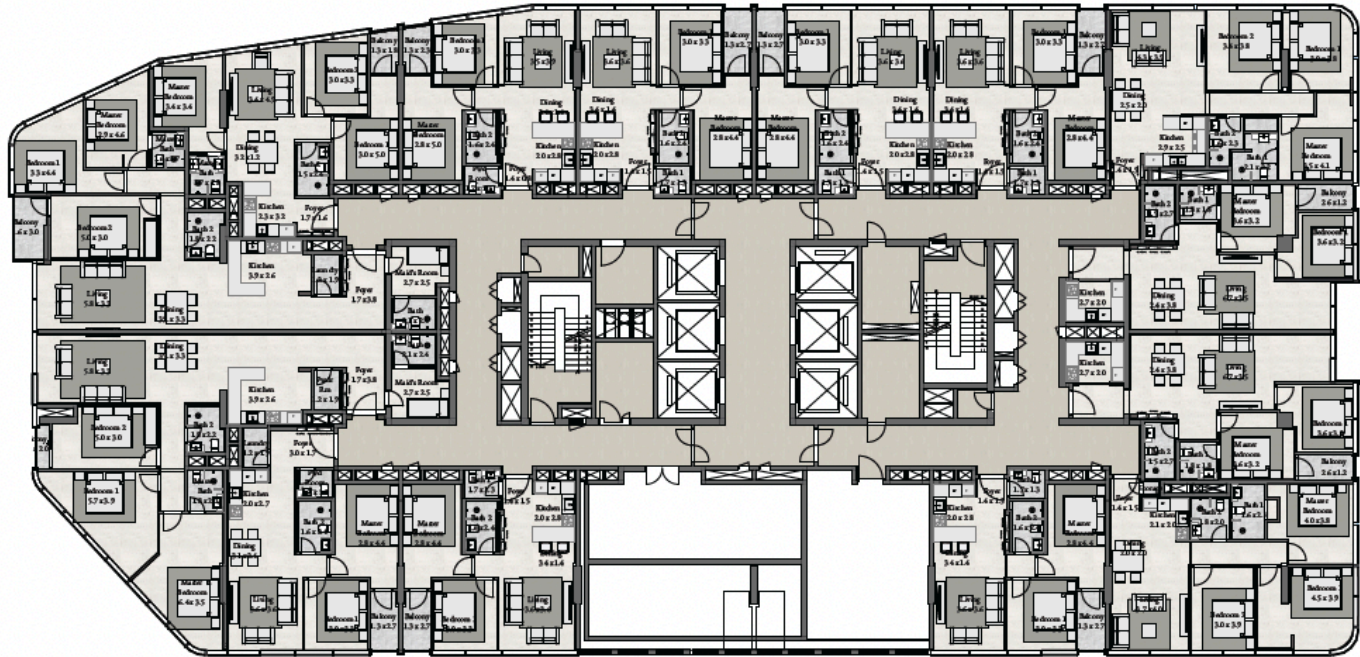
- Type 6-B30(920.20 sqft)
2 Bedroom + Balcony
- Type 6-B31(923.54 sqft)
2 Bedroom + Balcony

- Type 6-C26(1660.01 sqft)
3 Bed. + Maid + Balcony
- Type 6-B34(880.27 sqft)
2 Bed. + Utility + Balcony
- Type 6-B33(764.45 sqft)
2 Bedroom + Balcony
- Type 6-B32(767.89 sqft)
2 Bedroom + Balcony
- Type 6-B33(767.89 sqft)
2 Bedroom + Balcony
- Type 6-B32(764.45 sqft)
2 Bedroom + Balcony
- Type 6-C25(1058.95 sqft)
3 Bedroom



TYPICAL L01-L15 & L17-L29

- Type 6-C22(1545.37 sqft)
3 Bed. + Maid + Balcony
- Type 6-C23(945.17 sqft)
3 Bedroom + Balcony
- Type 6-B27(751.85 sqft)
2 Bedroom + Balcony
- Type 6-B28(782.53 sqft)
2 Bedroom + Balcony
- Type 6-B29(782.53 sqft)
2 Bedroom + Balcony
- Type 6-B28(782.53 sqft)
2 Bedroom + Balcony
- Type 6-C24(1084.14 sqft)
3 Bedroom



- Type 6-B30(920.20 sqft)
2 Bedroom + Balcony
- Type 6-B31(923.54 sqft)
2 Bedroom + Balcony

- Type 6-C26(1663.03 sqft)
3 Bed. + Maid + Balcony
- Type 6-B34(880.27 sqft)
2 Bedroom + Utility+ Balcony
- Type 6-B33(764.45 sqft)
2 Bedroom + Balcony
- Type 6-B32(1104.60 sqft)
2 Bedroom + Balcony
- Type 6-C25(1058.95 sqft)
3 Bedroom



TYPICAL L16



*Apartments
Floorplans.*

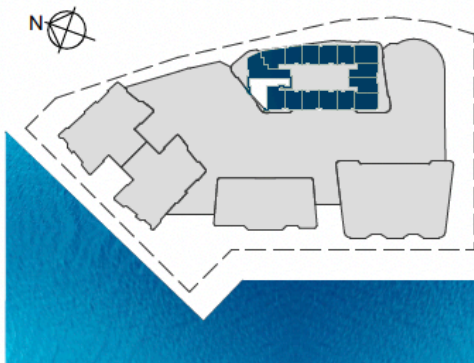
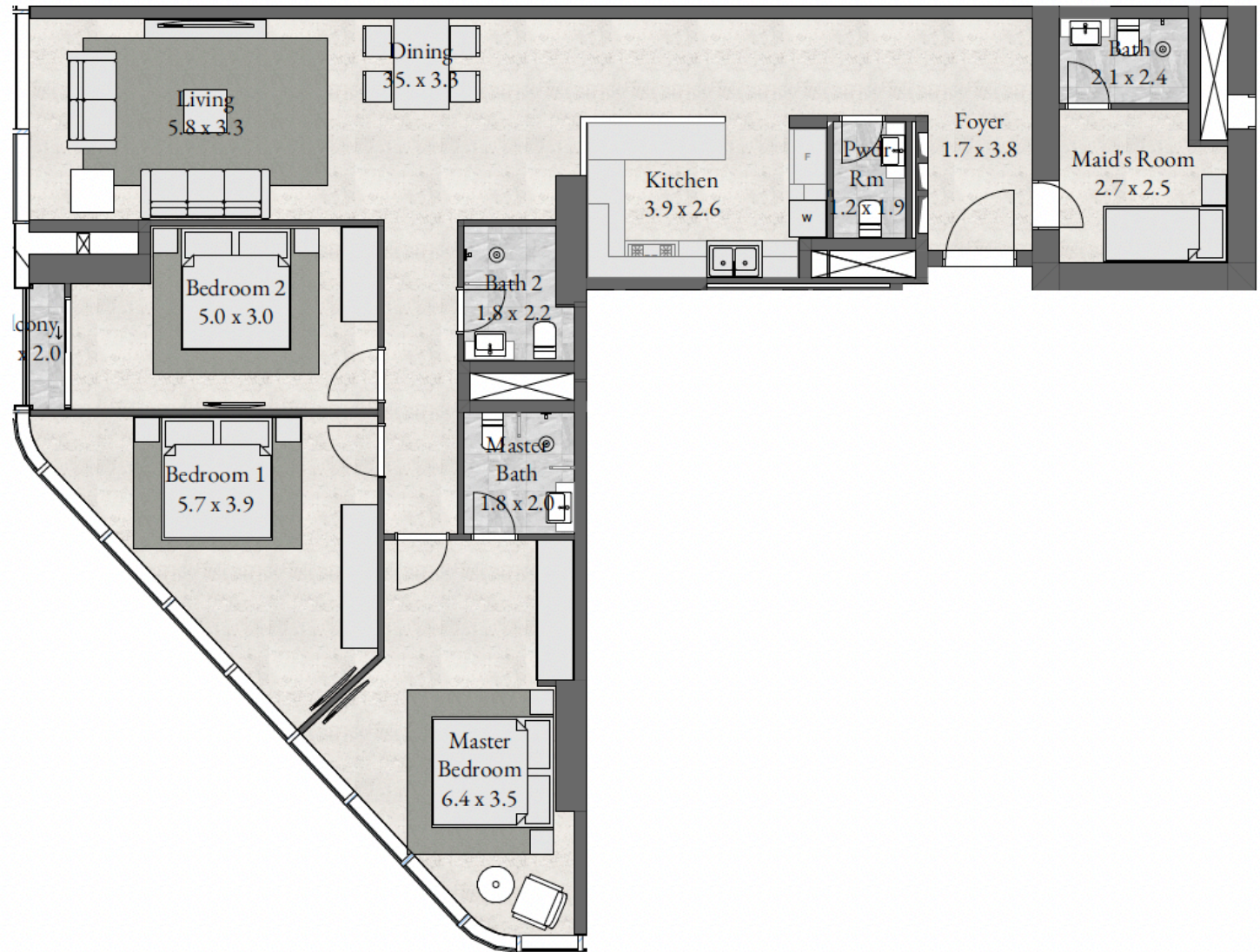
TYPE RBO - LEVEL 01-29

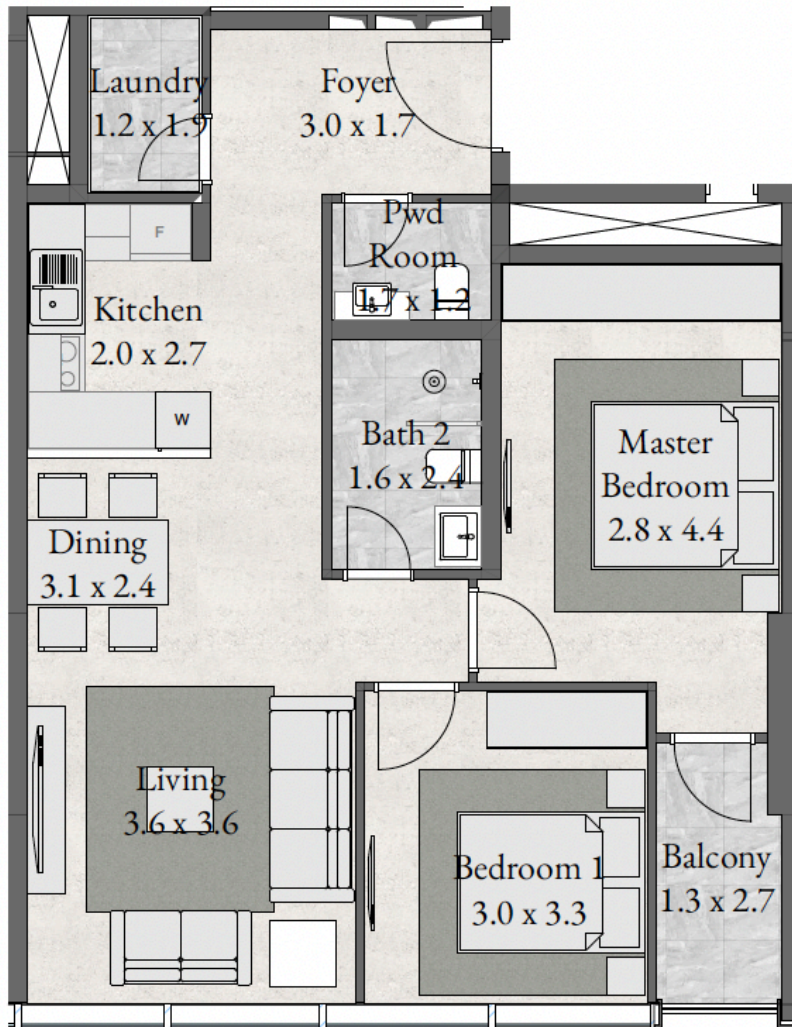
3 BEDROOM + BAL + MA

LEVEL 01-29

UNIT 116-1416
1,660 sqft

UNIT 1516-2916
1,663 sqft





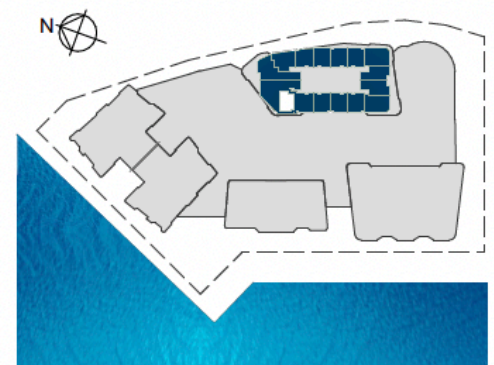
TYPE RBO - LEVEL 01-29

2 BEDROOM + BAL + UT

LEVEL 01-29

UNIT 115-2915

880 sqft



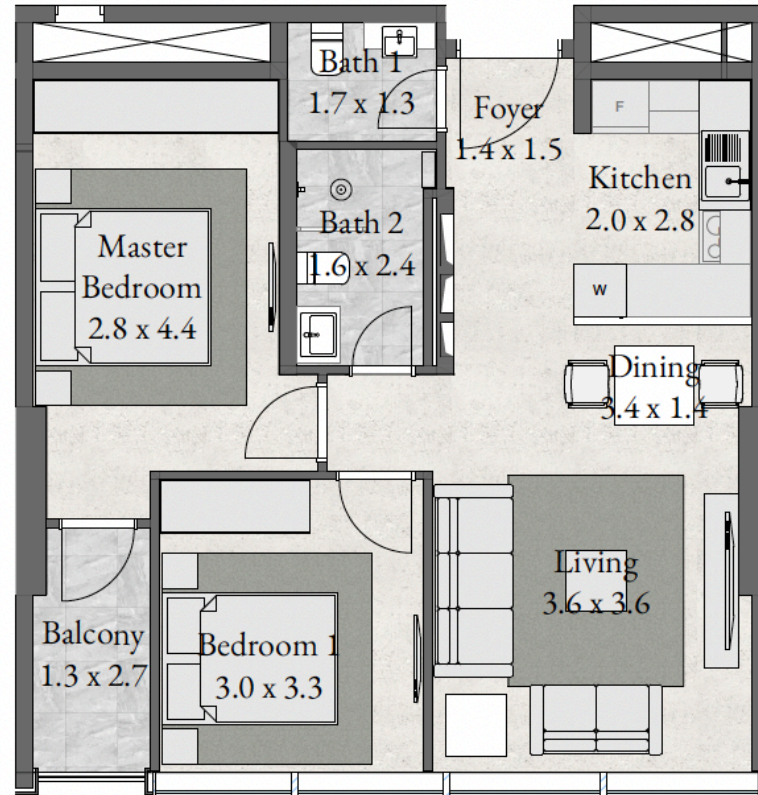
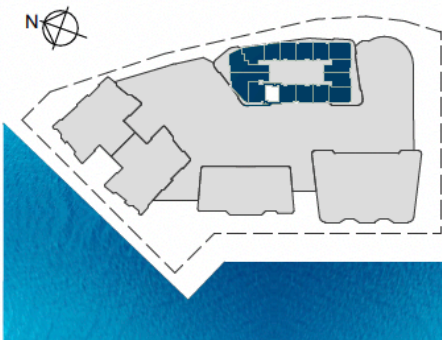
TYPE RBO - LEVEL 01-29

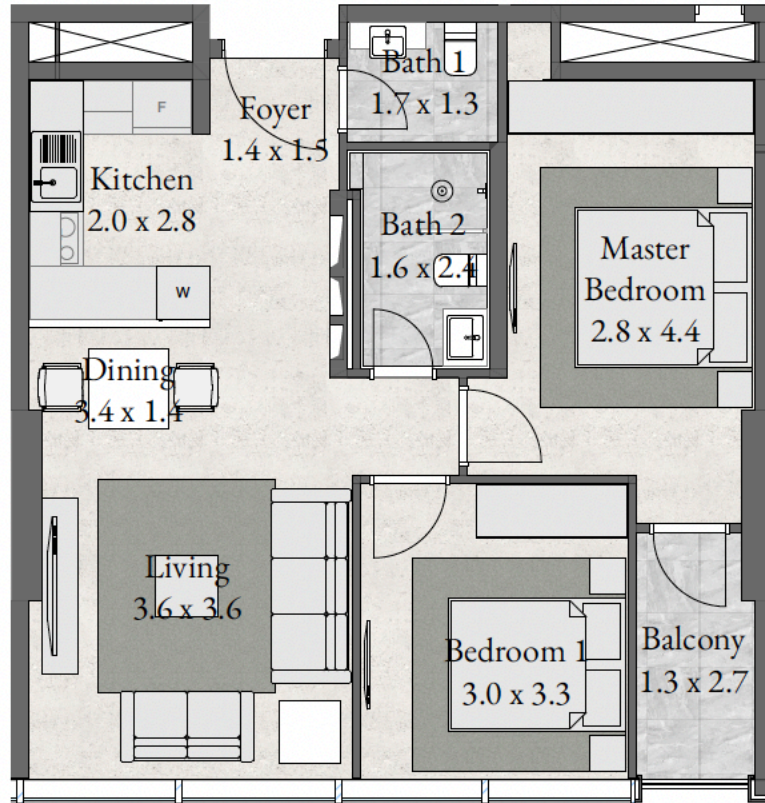
2 BEDROOM + BALCONY

LEVEL 01-29

UNIT 114-2914

764 sqft





TYPE RBO - LEVEL 01-15 & 17-29

2 BEDROOM + BALCONY

LEVEL 01-15 & 17-29

UNIT 113-1513 & 1713-2913

768 sqft



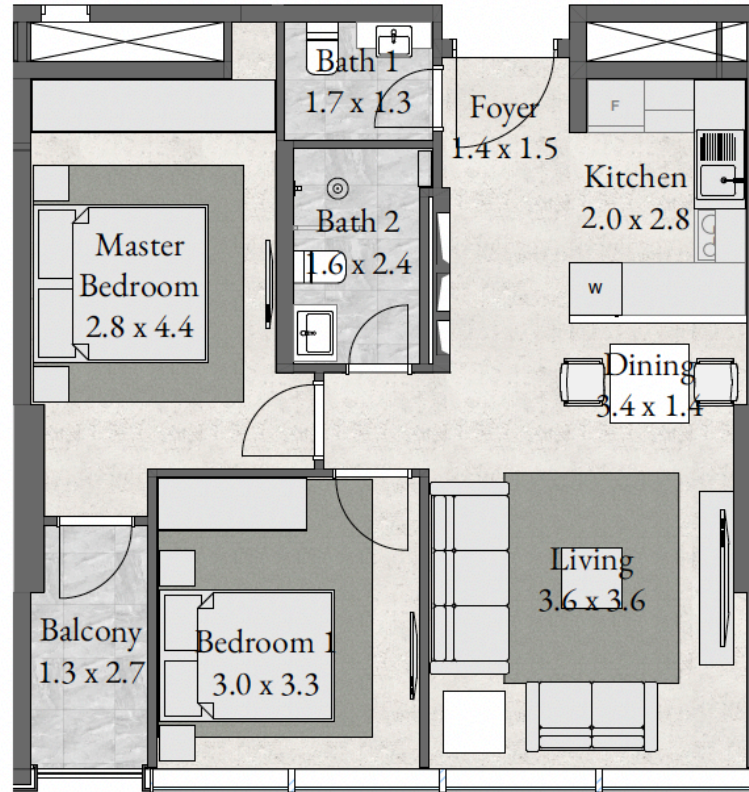
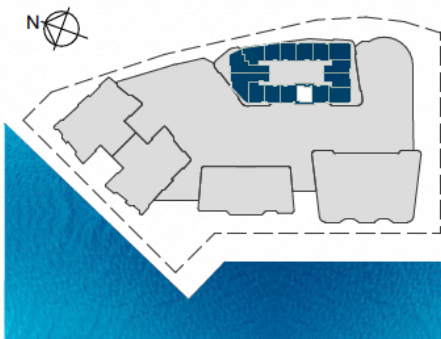
TYPE RBO - LEVEL 01-15 & 17-29

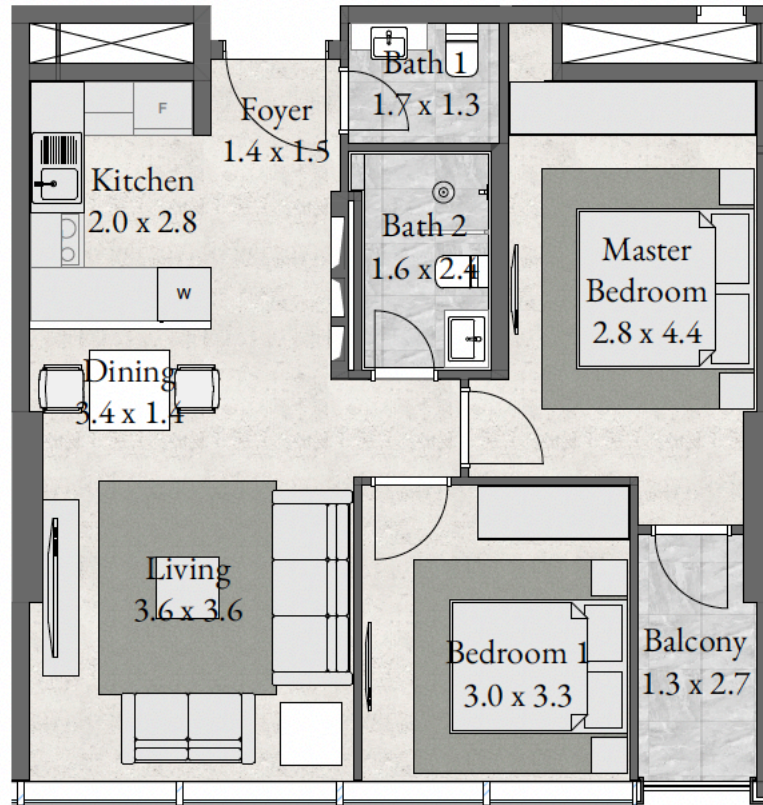
2 BEDROOM + BALCONY

LEVEL 01-15 & 17-29

UNIT 112-1512 & 1712-2912

768 sqft





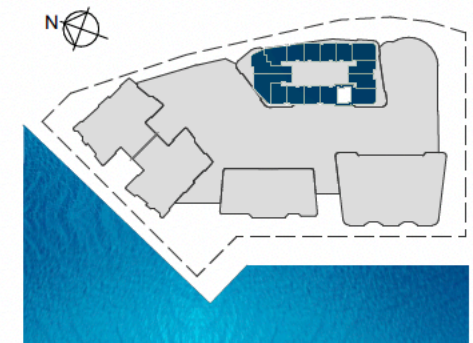
TYPE RBO - LEVEL 01-29

2 BEDROOM + BALCONY

LEVEL 01-29

UNIT 111-1511 & 1711-2911
764 sqft

Unit 1611
1104 sqft



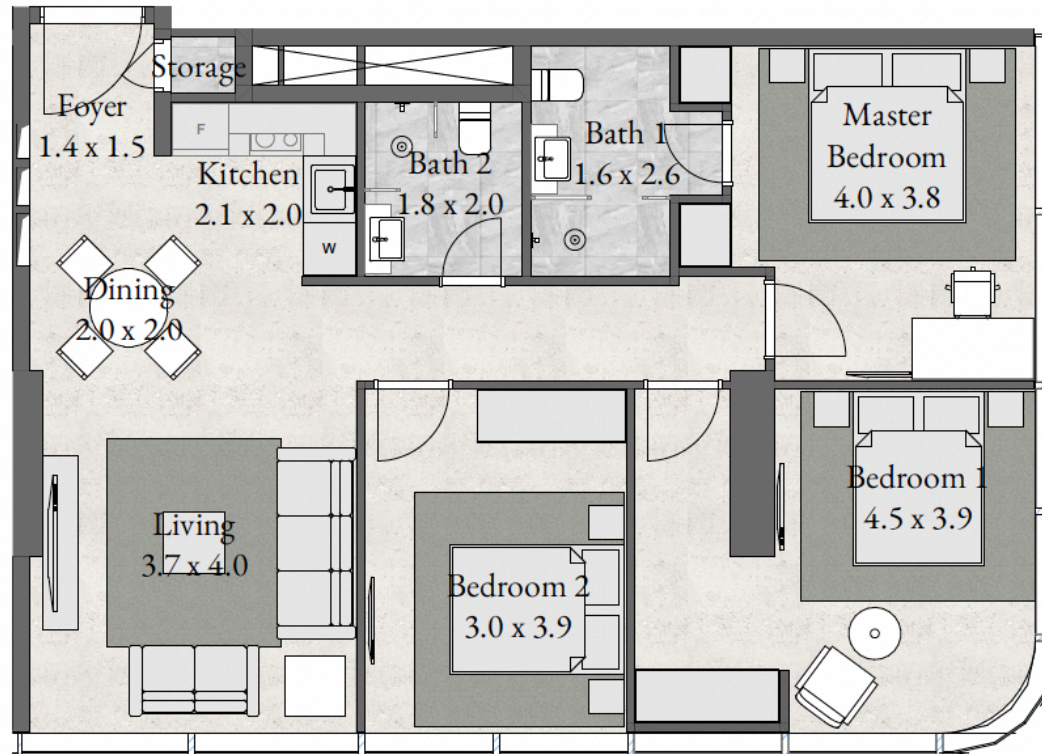
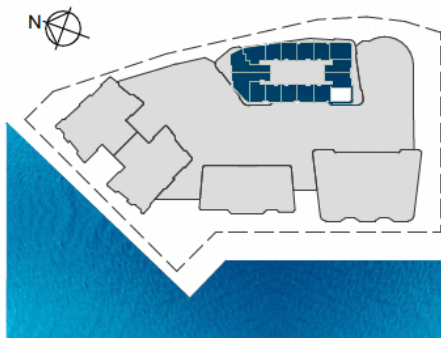
TYPE RBO - LEVEL 01-29

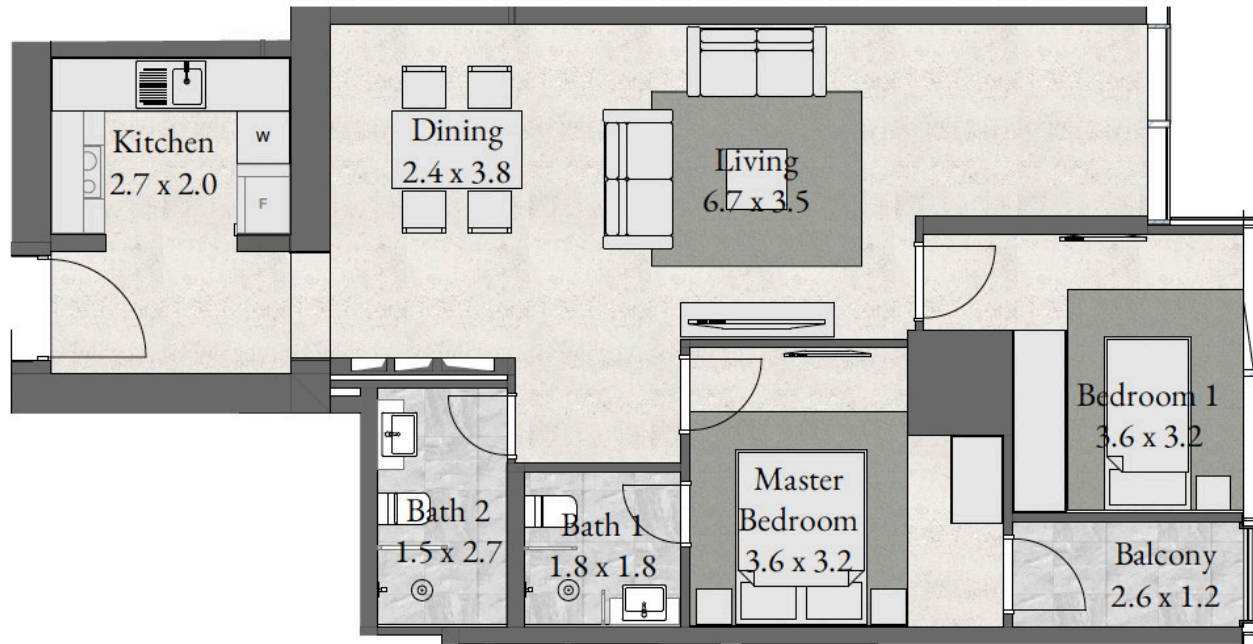
3 BEDROOM

LEVEL 01-29

UNIT 110-2910

1,059 sqft





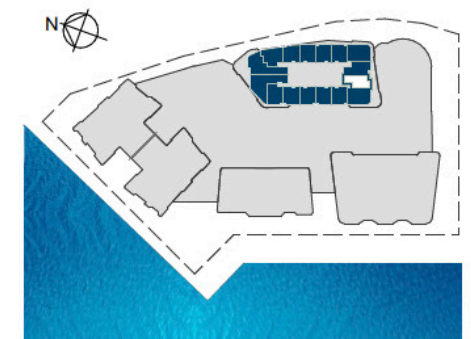
TYPE RBO - LEVEL 01-29

2 BEDROOM + BALCONY

LEVEL 01-29

UNIT 109-2909

924 sqft



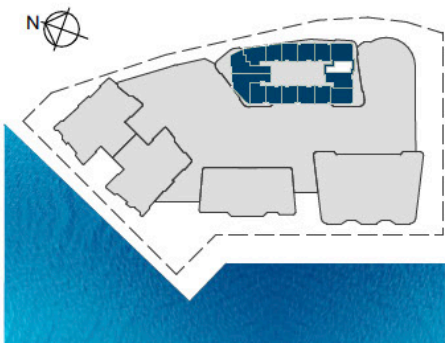
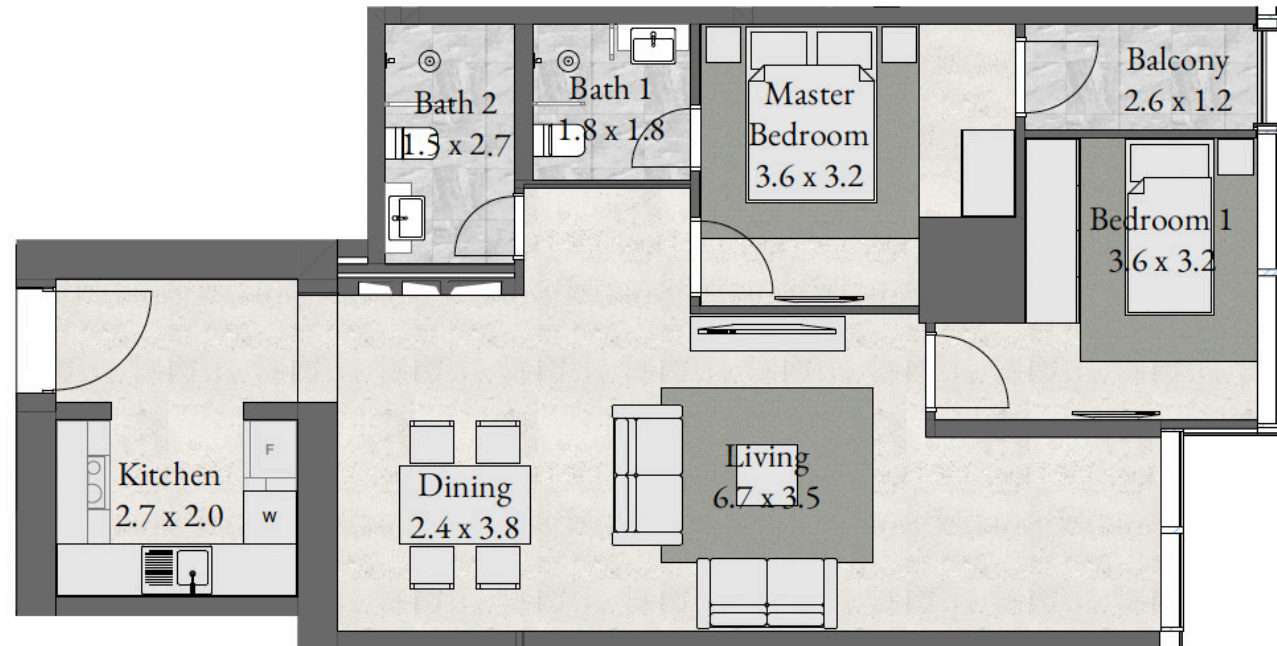
TYPE RBO - LEVEL 01-29

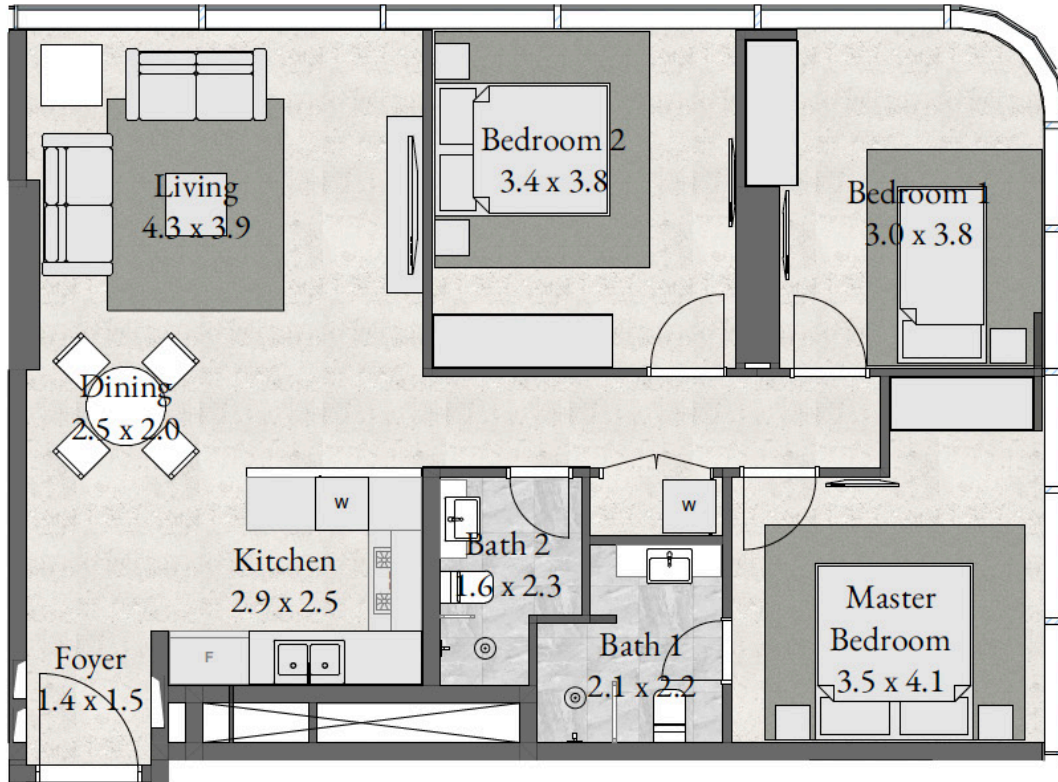
2 BEDROOM + BALCONY

LEVEL 01-29

UNIT 108-2908

920 sqft





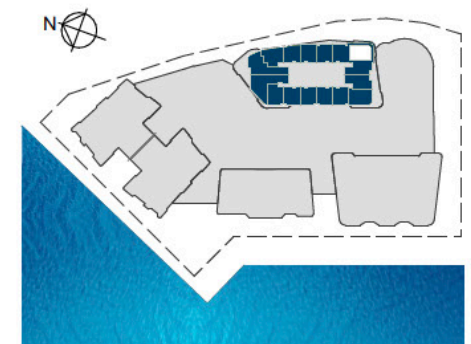
TYPE RBO - LEVEL 01-29

3 BEDROOM

LEVEL 01-29

UNIT 107-2907

1,084 sqft



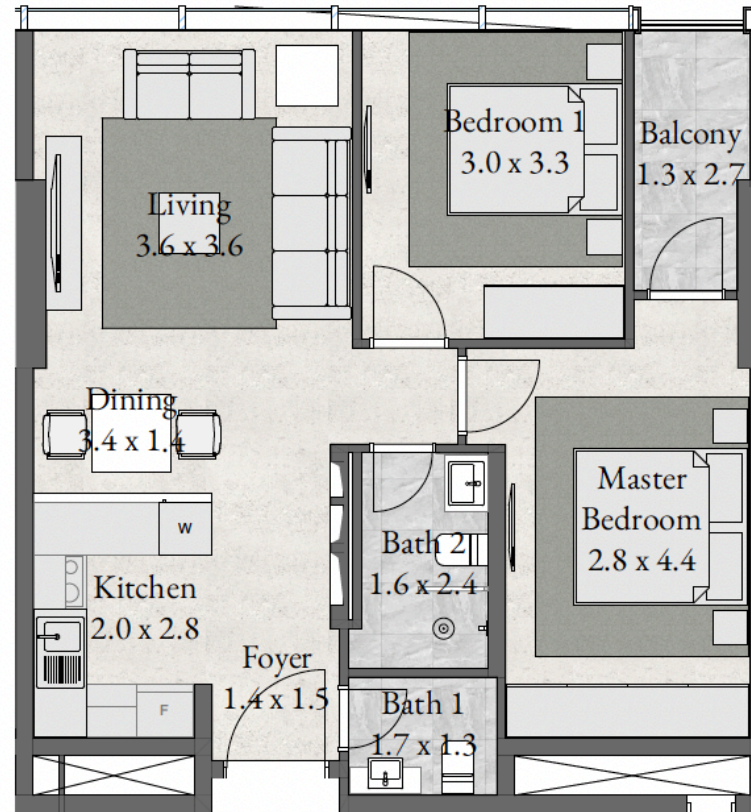
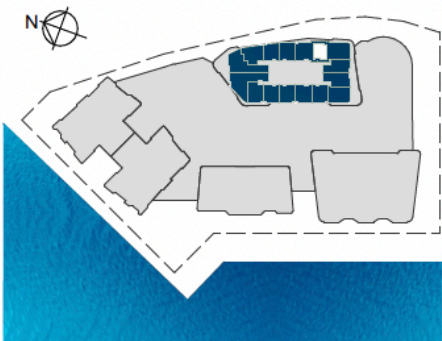
TYPE RBO - LEVEL 01-29

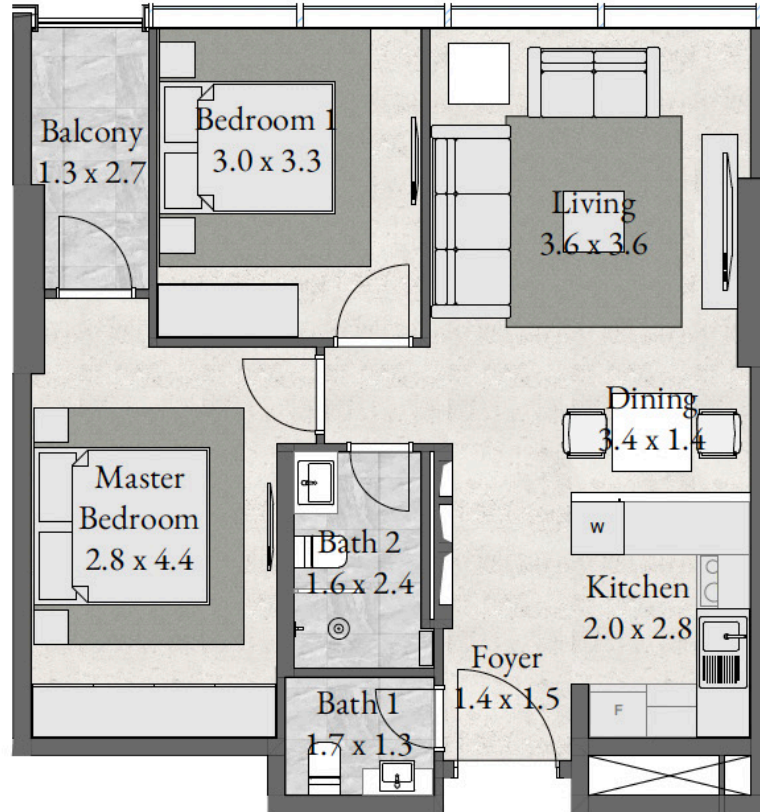
2 BEDROOM + BALCONY

LEVEL 01-29

UNIT 106-2906

783 sqft





TYPE RBO - LEVEL 01-29

2 BEDROOM + BALCONY

LEVEL 01-29

UNIT 105-2905

783 sqft



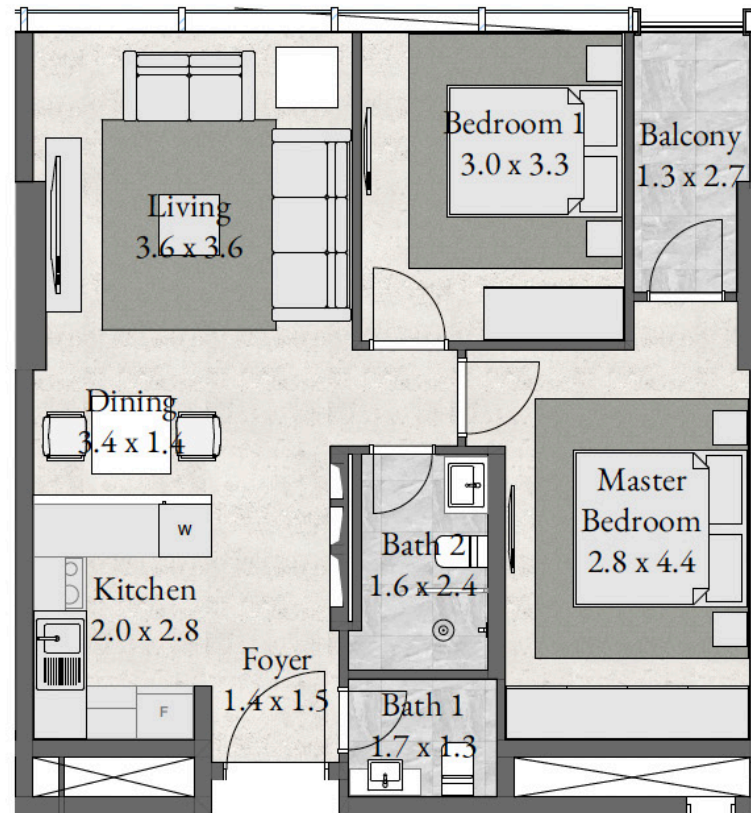
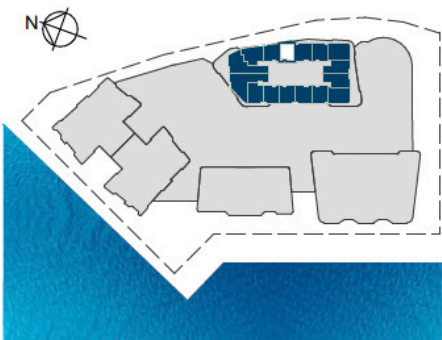
TYPE RBO - LEVEL 01-29

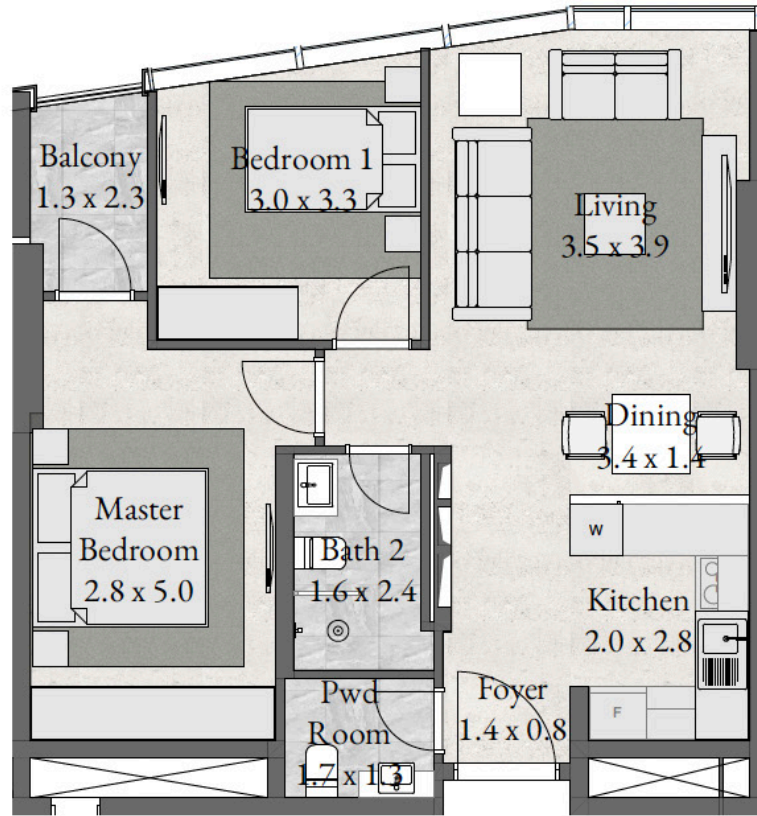
2 BEDROOM + BALCONY

LEVEL 01-29

UNIT 104-2904

783 sqft





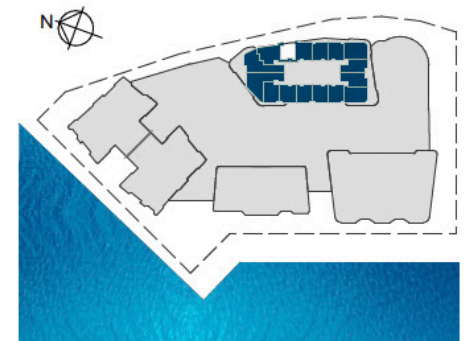
TYPE RBO - LEVEL 01-29

2 BEDROOM + BALCONY

LEVEL 01-29

UNIT 103-2903

752 sqft



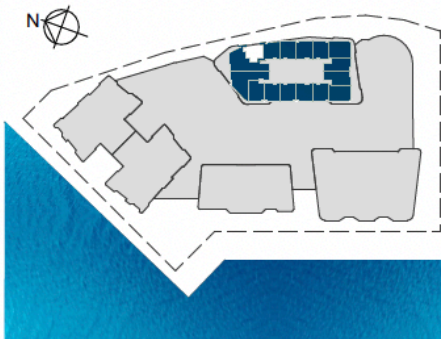
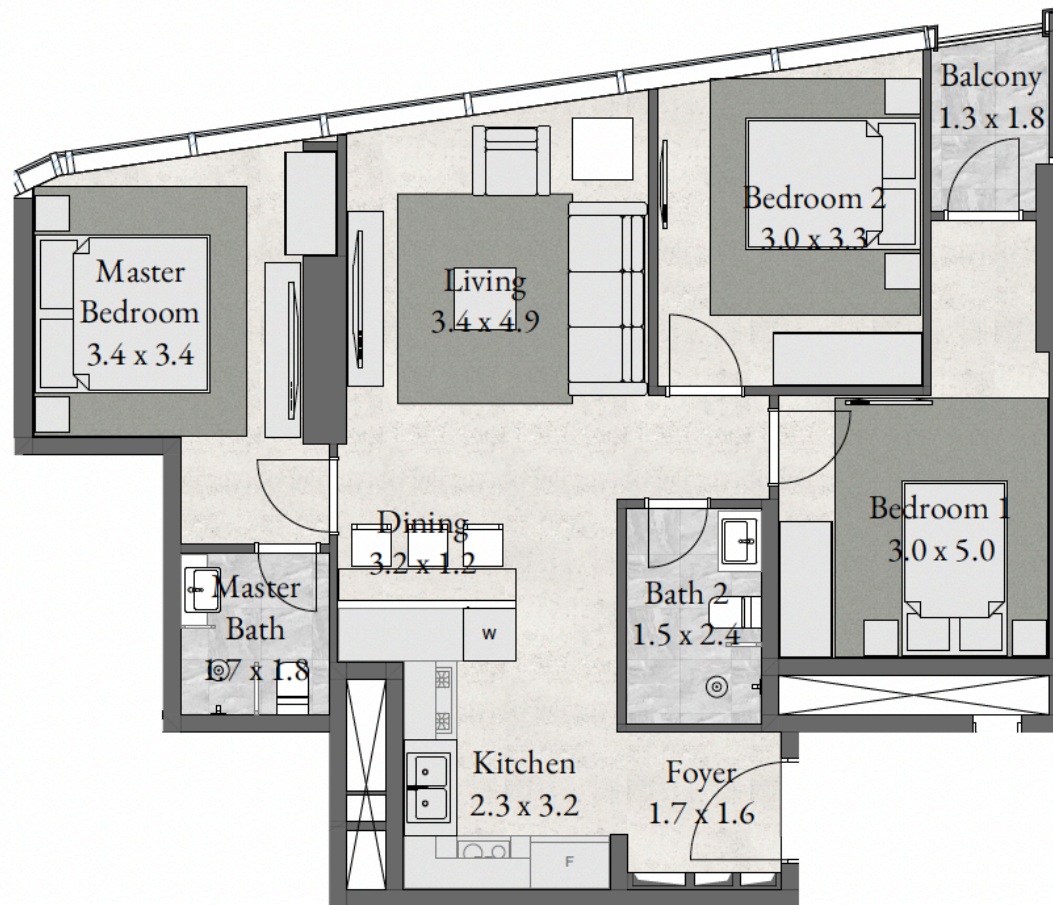
TYPE RBO - LEVEL 01-29

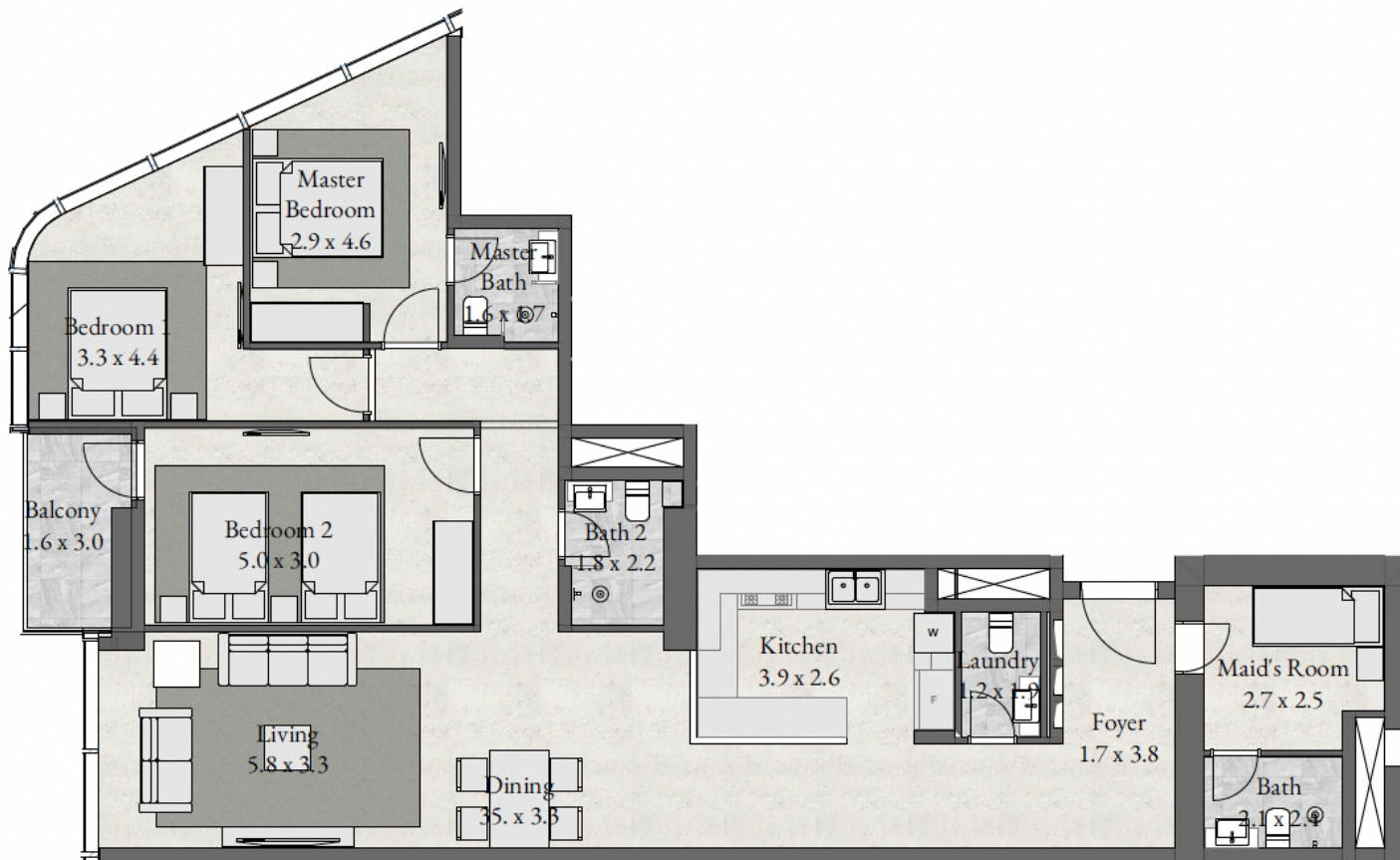
3 BEDROOM + BALCONY

LEVEL 01-29

UNIT 102-2902

945 sqft





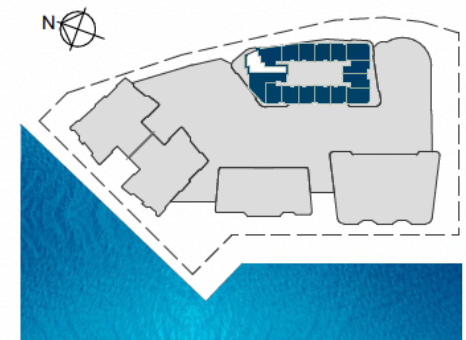
TYPE RBO - LEVEL 01-29

3 BEDROOM + BAL + MA

LEVEL 01-29

UNIT 101-2901

1,545 sqft





Sahel Towers, Tower B, M Floor, Abu Dhabi, UAE

+971 2 666 4431

elitecare@radiantrealstate.ae

www.radiantrealstate.ae