



Tonino Lamborghini

RESIDENCES
RAS AL KHAIMAH

AL MARJAN ISLAND

INTRODUCING
TONINO LAMBORGHINI RESIDENCES



THE ARCHITECT'S DESIGN PHILOSOPHY

Guided by the Tonino Lamborghini ethos of elegance, uncompromised style, design and innovation, Tonino Lamborghini Residences by BNW Developments in RAK is conceived not merely as a residence but as an architectural statement where Italian sophistication merges with the elemental beauty of sea and sand. The design translates the rhythm of waves and dunes into cascading terraces and sky gardens, balancing exclusivity and openness through private villas and mansions alongside vibrant communal realms. Ultimately, it is a legacy of lifestyle and a timeless expression of identity, aspiration, and belonging on Ras Al Khaimah's coastline.

CREATIVE DIRECTION
MRS. ANGELA KRIEGER

INTERIOR DESIGN ARCHITECT
MR. CARLOS ROSSI



Al Marjan Island



64.4 m



2B+G+15+R

GRAND, CASCADING COASTAL MAJESTY

Tonino Lamborghini Residences' elevation draws a sculpted coastal profile, its cascading terraces and sky gardens tuned to the island's prevailing winds and tidal rhythms. A contemporary yet enduring language guides every line: assertive forms moderated by tactile, natural textures and discreet metallic accents refined by Tonino Lamborghini's iconic lines and elements. Terraces are carefully proportioned to maintain views, provide shade along the promenades and soften natural light. Native planting blends the architecture with the shoreline's ecosystem, while the landmark's form ensures privacy and a sense of calm. Altogether, the composition harmonises luxury with nature, projecting quiet confidence and timeless poise along Al Marjan Island.



378
Total Units



394,852.5 sqft
Gross Floor area



157,941 sqft
Plot Area



Ennio Lombardi



TONINO LAMBORGHINI VILLAS

Set within the refined coastal setting of Al Marjan Island, the Tonino Lamborghini Villas are conceived as a private expression of Italian sophistication by the sea. Spanning 4,595.65 to 5,367.10 sq. ft. and starting from AED 21.83 million, these residences bring together the precision of iconic design with the serenity of island living. Surrounded by a distinguished mix of hospitality and residential destinations, the villas offer a lifestyle shaped by privacy, openness, and a deep connection to the shoreline, with handover anticipated in Q4 2028.



 *Tonino Lamborghini*







VILLA MASTER BEDROOM



VILLA LIVING ROOM



VILLA LIVING ROOM

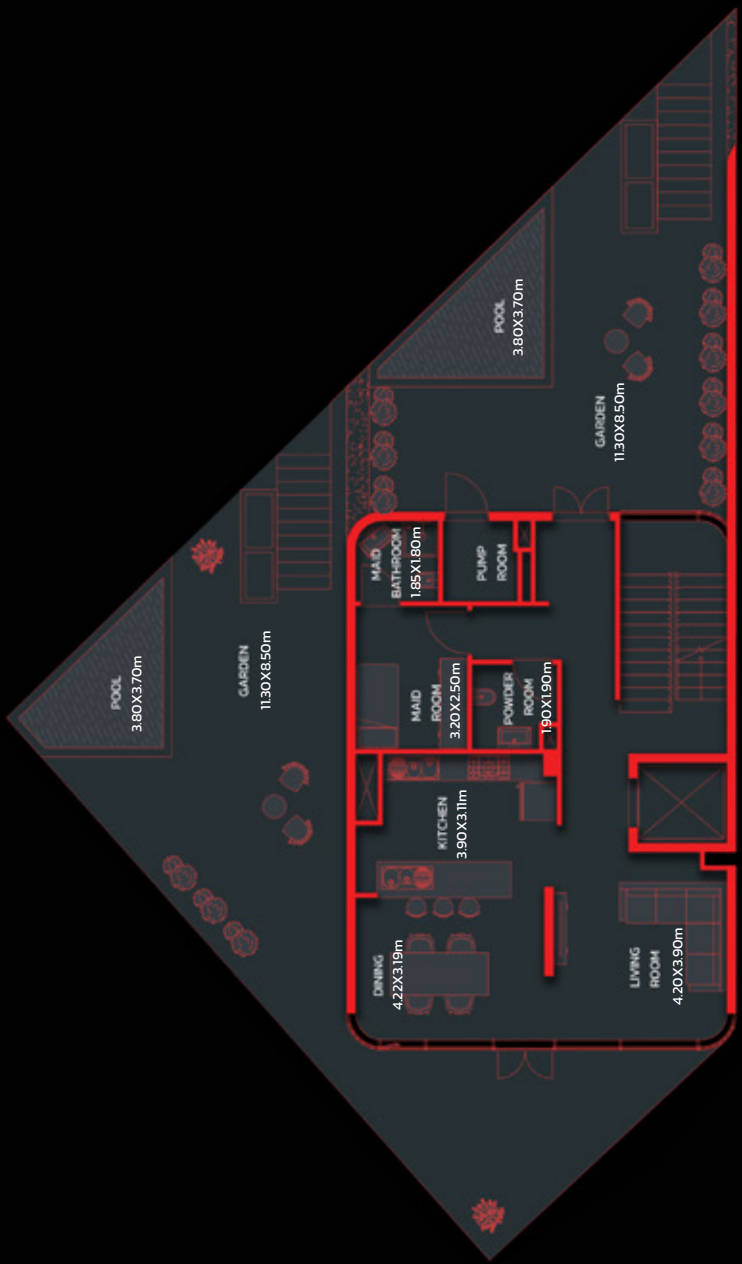


VILLA MASTER BATHROOM



VILLA BATHROOM

UNIT PLANS

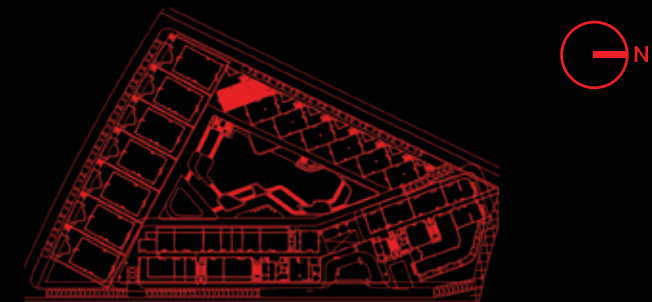


VILLA 3 BEDROOM

VILLA-GROUND FLOOR

1	Kitchen	3.90X3.11m
2	Living Room	4.20X3.90m
3	Dining	4.22X3.19m
4	Powder Room	1.90X1.90m
5	Maid Room	3.20X2.50m
6	Maid Bathroom	1.85X1.80m
7	Pump Room	1.80X1.67m
8	Pool	3.80X3.70m
9	Garden	11.30X8.50m

Suite Area	3063.19 Sq.ft	to	3063.51 Sq.ft
Balcony Area	1532.13 Sq.ft	to	2303.80 Sq.ft
Total Area	4595.65 Sq.ft	to	5367.10 Sq.ft



Key plan : Ground Floor

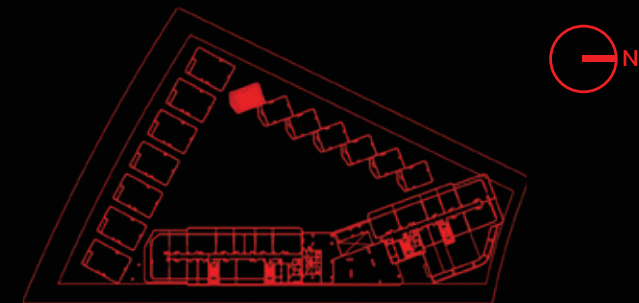


VILLA 3 BEDROOM

VILLA-FIRST FLOOR

1	Bedroom 01	5.10X4.50m
2	Bathroom 01	2.70X1.80m
3	Bedroom 02	5.00X3.90m
4	Bathroom 02	2.83X2.30m
5	Balcony	8.68X2.35m

Suite Area	3063.19 Sq.ft	to	3063.51 Sq.ft
Balcony Area	1532.13 Sq.ft	to	2303.80 Sq.ft
Total Area	4595.65 Sq.ft	to	5367.10 Sq.ft



Key plan : First Floor

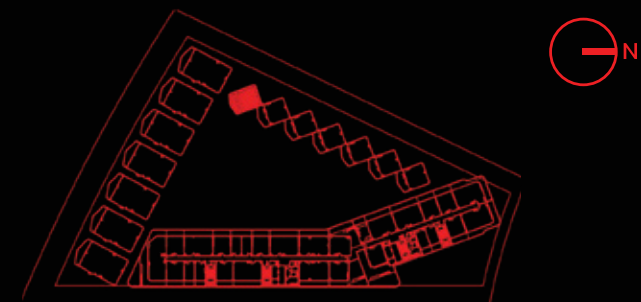


VILLA 3 BEDROOM

VILLA-SECOND FLOOR

1	Master Bedroom	5.10X4.20m
2	Master Bathroom	3.40X2.70m
3	Dress	2.70X2.30m
4	Balcony	8.66X3.68m

Suite Area	3063.19 Sq.ft	to	3063.51 Sq.ft
Balcony Area	1532.13 Sq.ft	to	2303.80 Sq.ft
Total Area	4595.65 Sq.ft	to	5367.10 Sq.ft

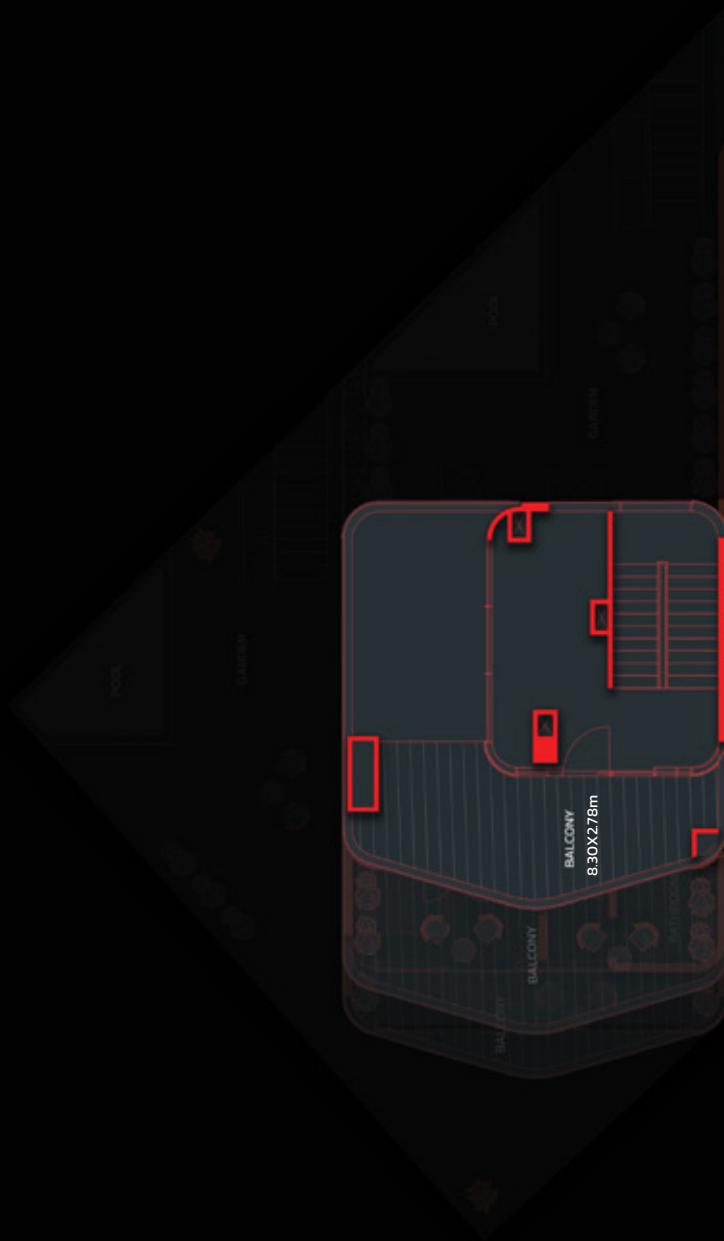


Key plan : Second Floor

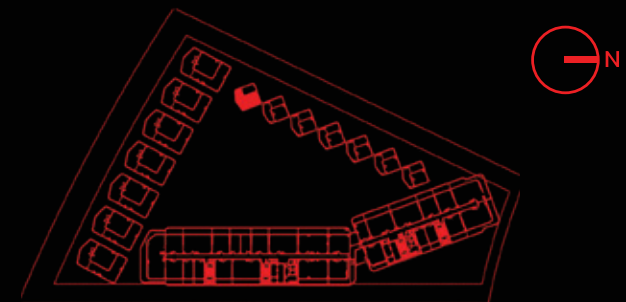
VILLA 3 BEDROOM

VILLA-THIRD FLOOR

1	Balcony	8.30X2.78m
---	---------	------------



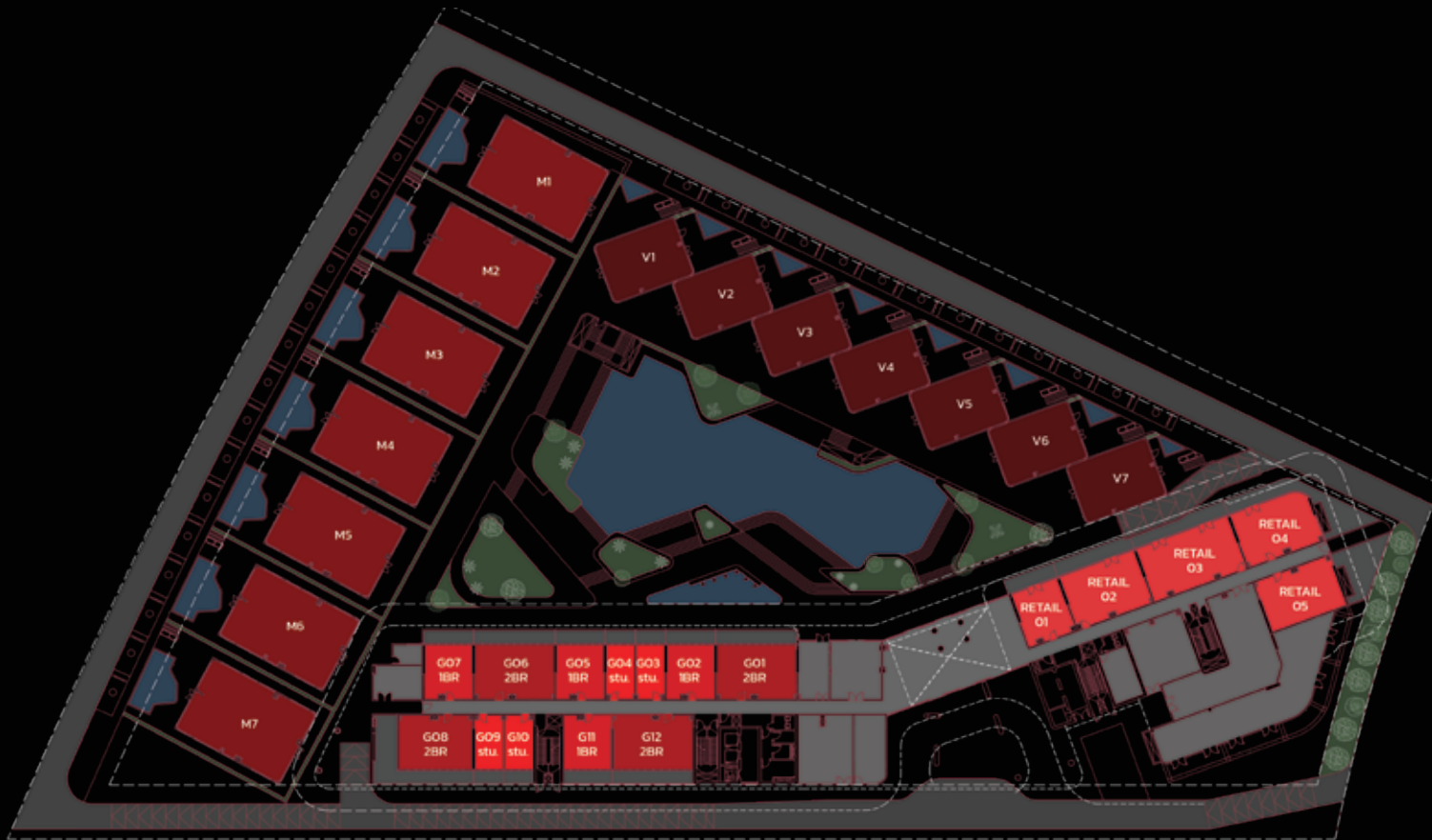
Suite Area	3063.19 Sq.ft	to	3063.51 Sq.ft
Balcony Area	1532.13 Sq.ft	to	2303.80 Sq.ft
Total Area	4595.65 Sq.ft	to	5367.10 Sq.ft



Key plan : Third Floor

FLOOR PLANS

GROUND FLOOR LAYOUT



● STUDIO

● 1 BHK

● 2 BHK

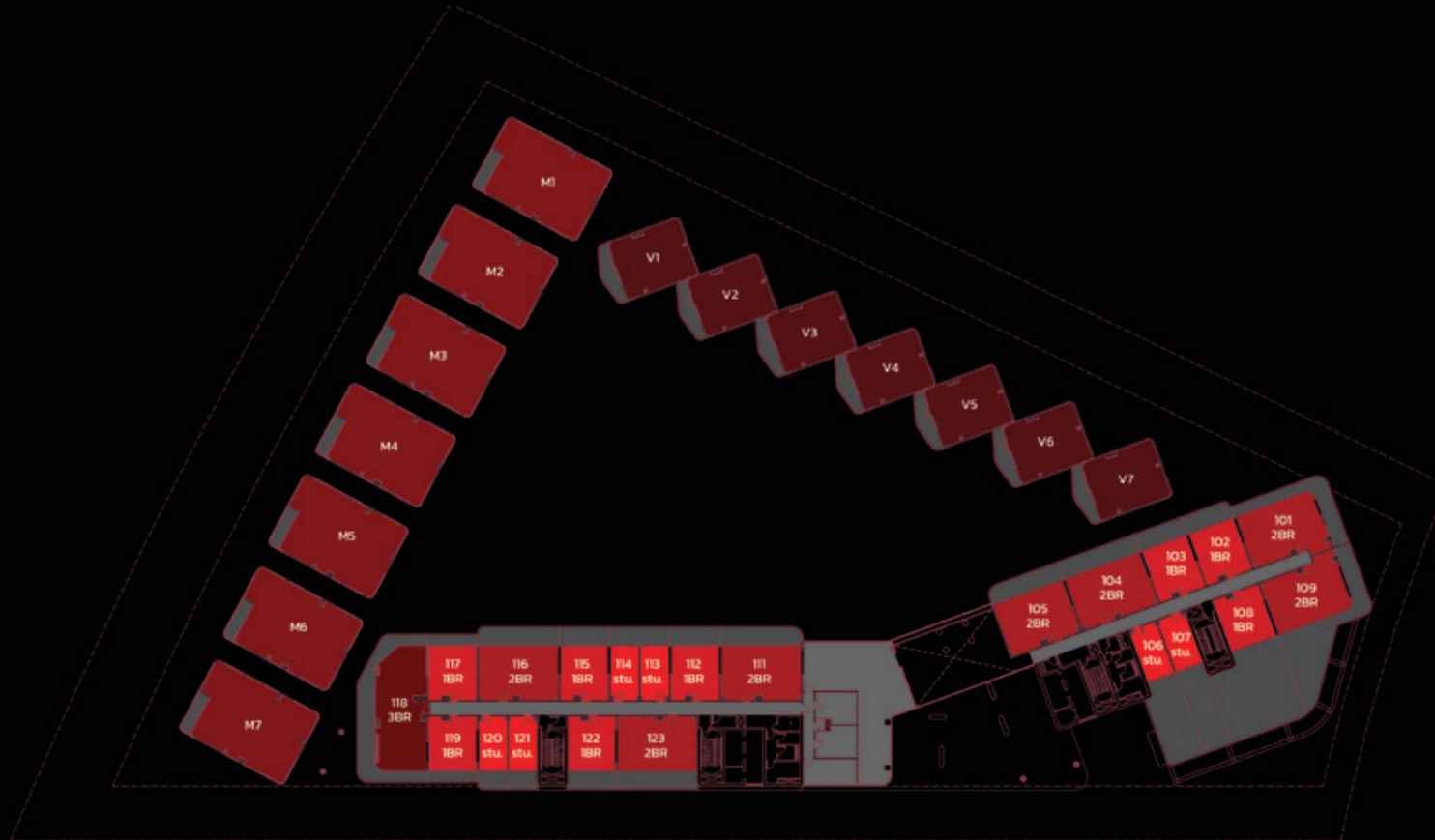
● 3 BHK

● MANSION

● VILLA

Disclaimer: All dimensions, materials and drawings are approximate. Information is subject to change without notice, at the developer's absolute discretion. The actual area may vary from the stated area. Drawings are not to scale. All images used are for illustrative purposes only and do not represent the actual size, features, specifications, fittings and furnishings. The developer reserves the right to make revisions/alterations, at the absolute discretion without any liability whatsoever.

FIRST FLOOR LAYOUT



● STUDIO

● 1 BHK

● 2 BHK

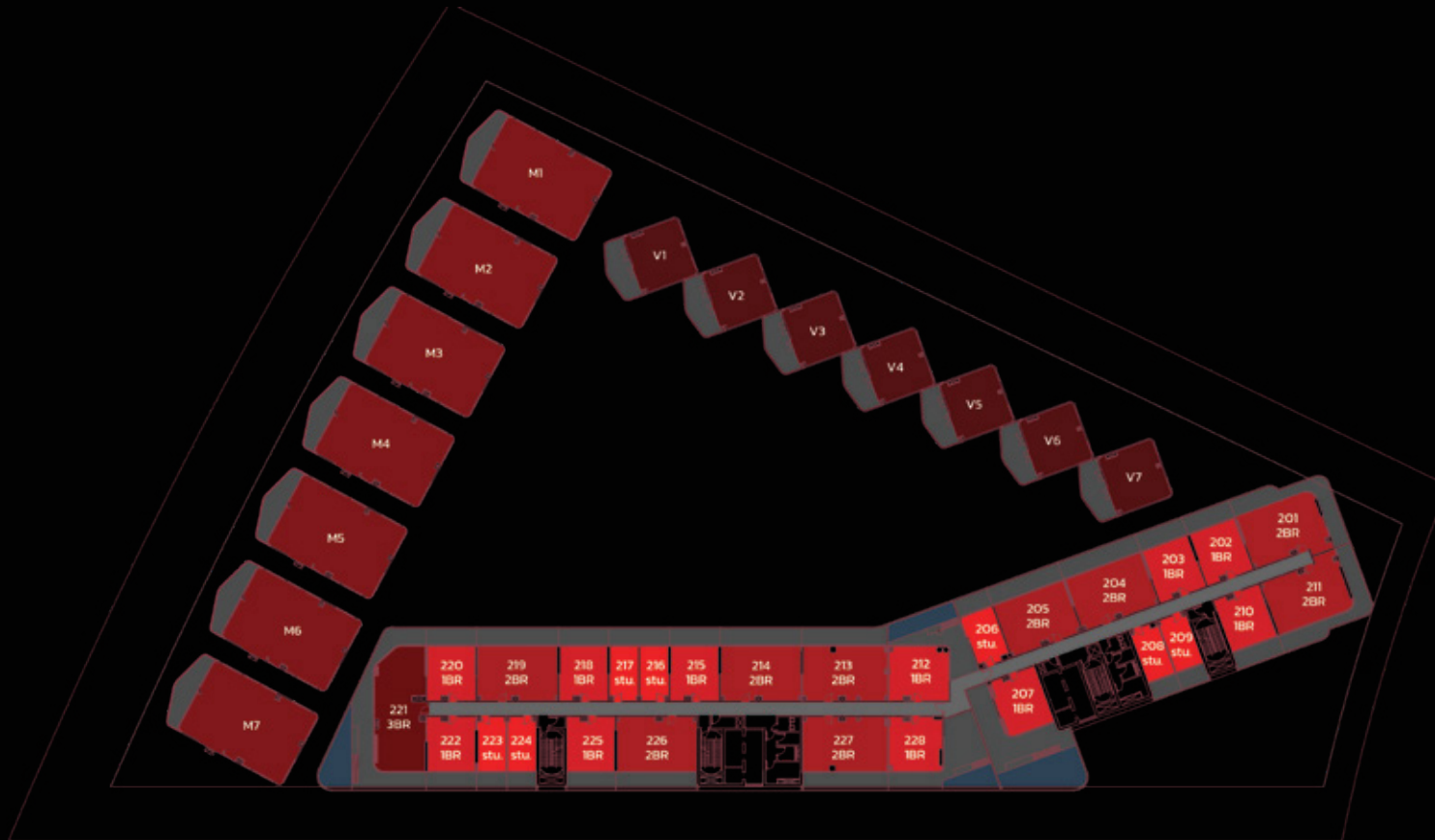
● 3 BHK

● MANSION

● VILLA

Disclaimer: All dimensions, materials and drawings are approximate. Information is subject to change without notice, at the developer's absolute discretion. The actual area may vary from the stated area. Drawings are not to scale. All images used are for illustrative purposes only and do not represent the actual size, features, specifications, fittings and furnishings. The developer reserves the right to make revisions/alterations, at the absolute discretion without any liability whatsoever.

SECOND FLOOR LAYOUT



 STUDIO

 1 BHK

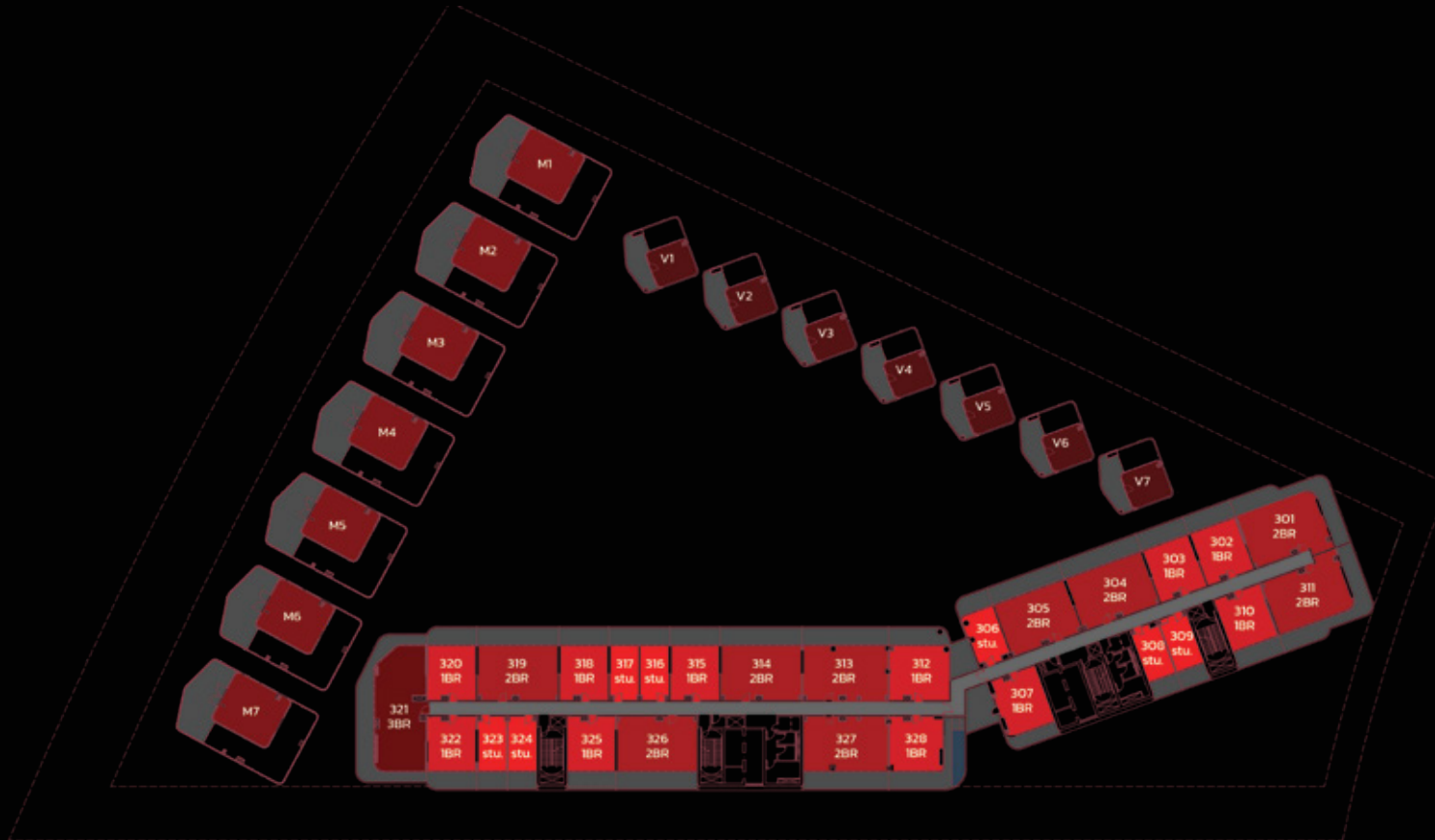
 2 BHK

 3 BHK

 MANSION

 VILLA

THIRD FLOOR LAYOUT



STUDIO

1 BHK

2 BHK

3 BHK

MANSSION

VILLA

Disclaimer: All dimensions, materials and drawings are approximate. Information is subject to change without notice, at the developer's absolute discretion. The actual area may vary from the stated area. Drawings are not to scale. All images used are for illustrative purposes only and do not represent the actual size, features, specifications, fittings and furnishings. The developer reserves the right to make revisions/alterations, at the absolute discretion without any liability whatsoever.



ITALIAN LEGACY.
NOW LIVED.



BNW DEVELOPMENTS

بي ان دبليو للتطوير العقاري

33rd Floor, Uhora Tower, Business Bay, Dubai, UAE

☎ 800BNWUAE

🌐 BNW.AE

✉ INFO@BNW.AE