

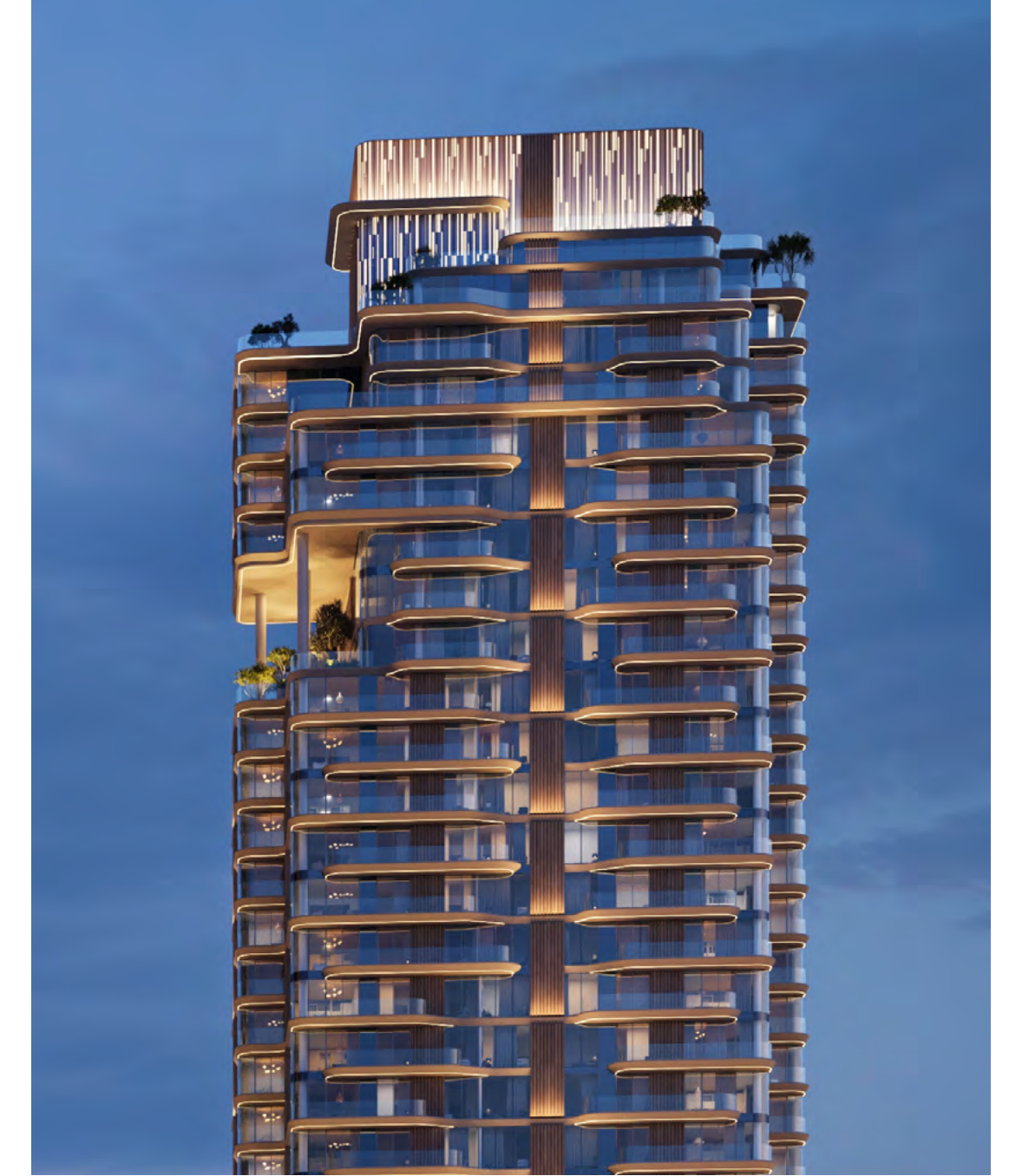


THE EDIT ^{AT} d3



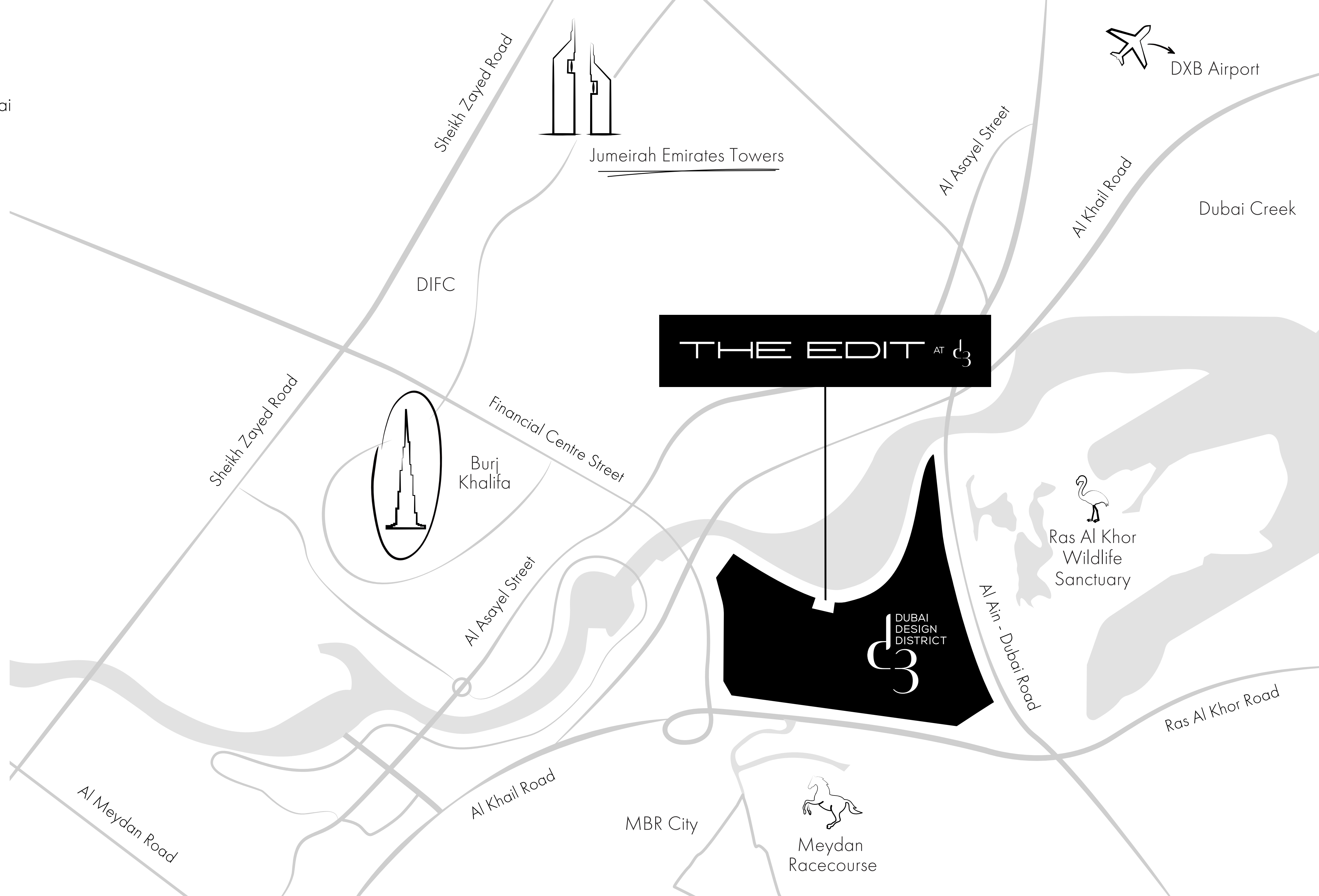
Project Briefing

Welcome to
THE EDIT AT **d3**



The Edit at d3 is a new contemporary trio of waterfront residences shaped by movement, light and nature. Softened edges, curved corners and sweeping balcony lines give the three towers a timeless elegance, rising in harmony to form a distinct skyline.

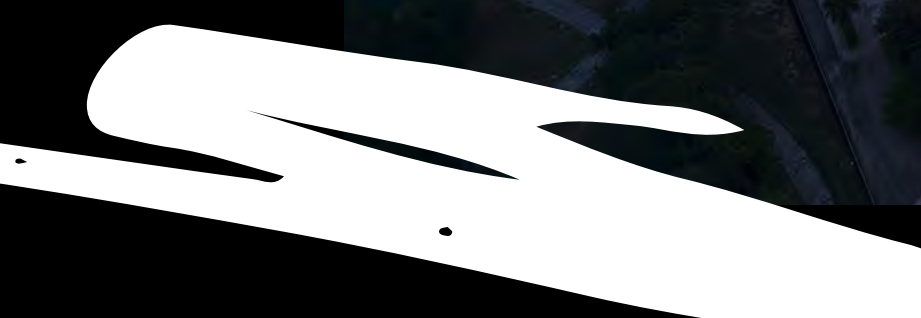
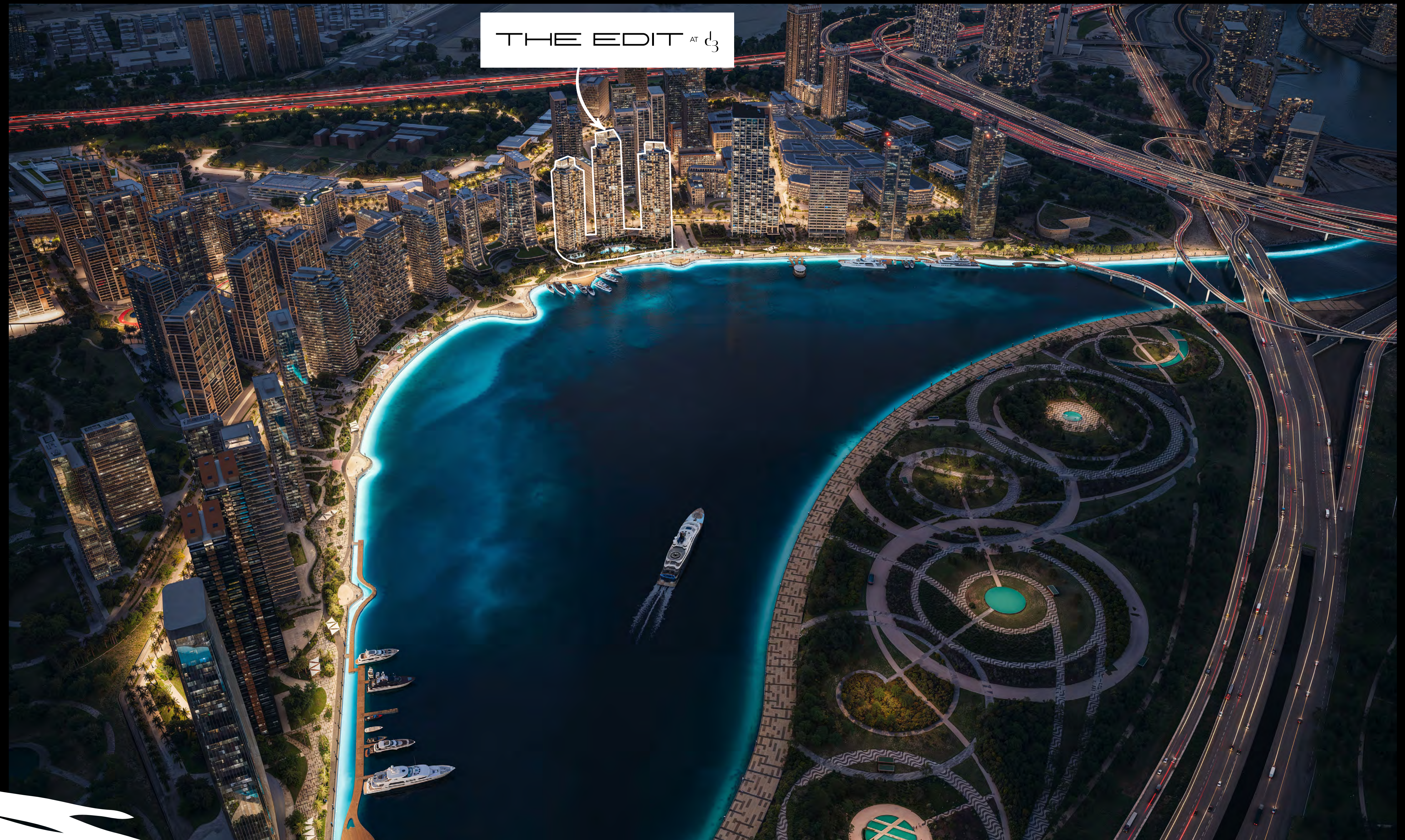
- 6** min • The Dubai Mall
- 7** min • Downtown Dubai
- 7** min • City Walk
- 10** min • Burj Khalifa
- 10** min • Business Bay
- 12** min • DIFC
- 15** min • DXB Airport




THE EDIT AT **D3**

DUBAI DESIGN DISTRICT
D3

THE EDIT AT 





Set along the shoreline of d3, a waterfront vision rises in three sculptural movements, an ensemble that engages both city and water, with sky gardens creating living sanctuaries that draw light, greenery and air into the heart of the towers.

Unscripted. By Design.

Where Architecture Flows Like Water



Where Every Line
Leads to the Sky






An Arrival Framed *by* Sculptural Canopies

A Harmony of Architecture and Calm



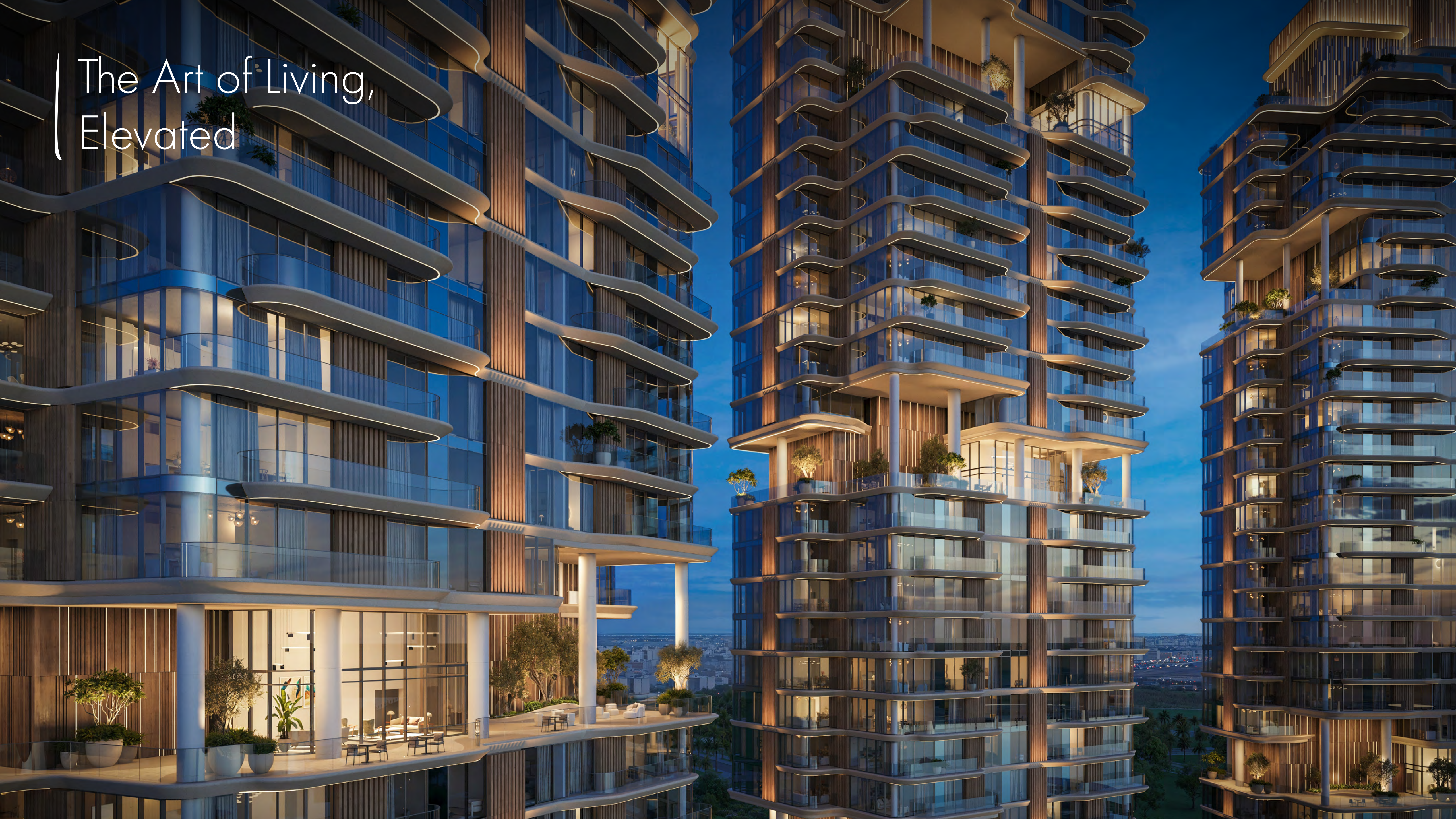
A modern sky garden at night, featuring a curved concrete structure with large pillars, potted plants, and a view of a city skyline. The scene is illuminated by warm interior lights and the city lights in the background.

Sky Gardens that
☞ Bring Life Upward

A Skyline
Masterpiece



The Art of Living,
Elevated

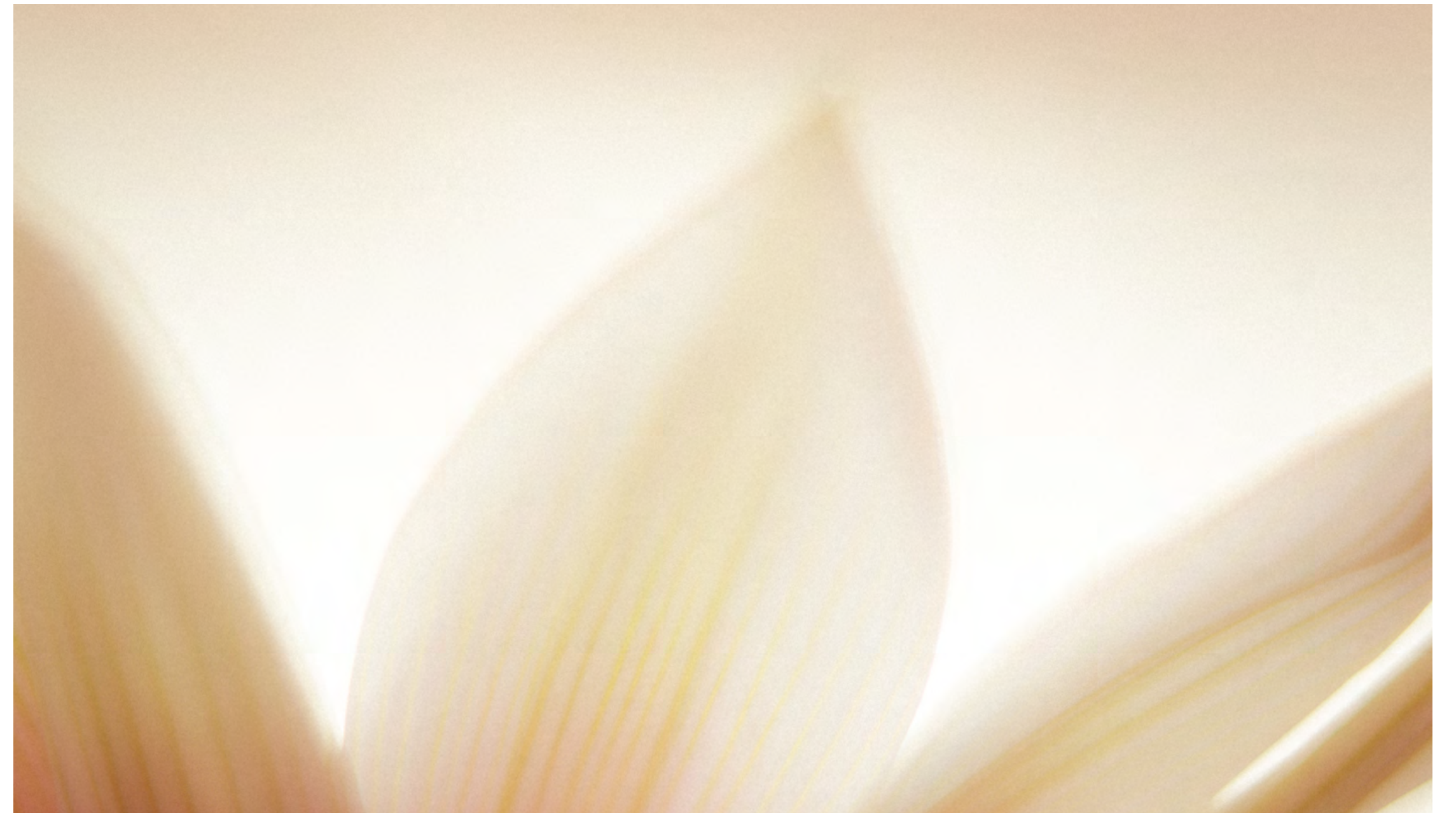


A Grand Entrance





A **Bold** Landmark
Rooted in Elegance





Towers that Rise with  Fluid Grace

A Symphony of Living



Reflections
on the Water





The Future of

Urban Living

Intimate | Vertical Living





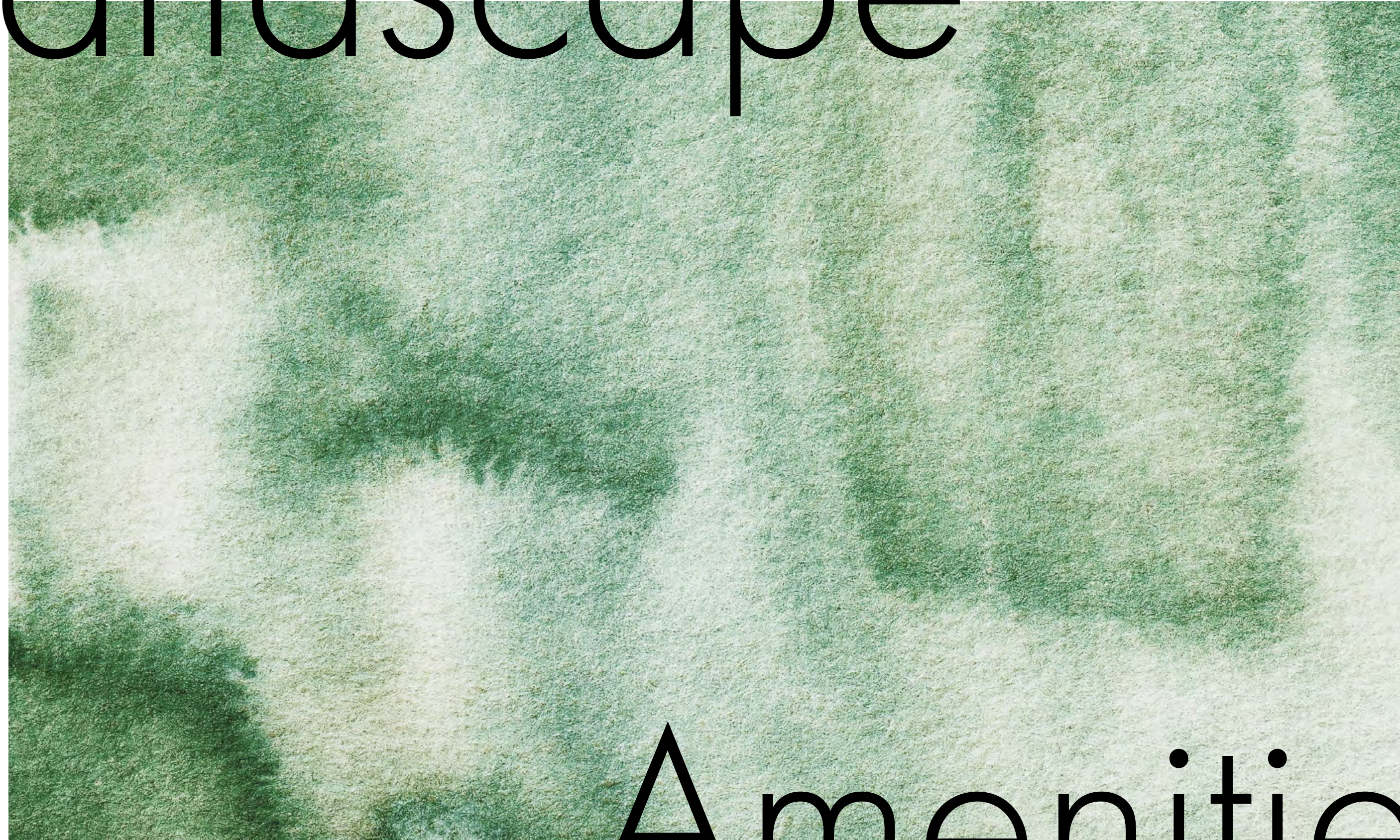
Three Towers,
Infinite Perspectives





A Vibrant Eternity of Living

Landscape



Amenities

Amenities Plan



- 1 Entrance
- 2 Wellness Space
- 3 Pool Deck
- 4 Communal Space
- 5 Seating Areas
- 6 BBQ Area/California Rooms
- 7 Promenade Access
- 8 Kids' Play Area
- 9 Social Spaces
- 10 Upper Family Pool
- 11 Lower Lap Pool
- 12 Padel Court
- 13 Private Cabanas
- 14 Kids' Pool
- 15 Parking Access





Swimming Pool & Promenade



Walking Path



Sports Court



Swimming Pool



Swimming Pool



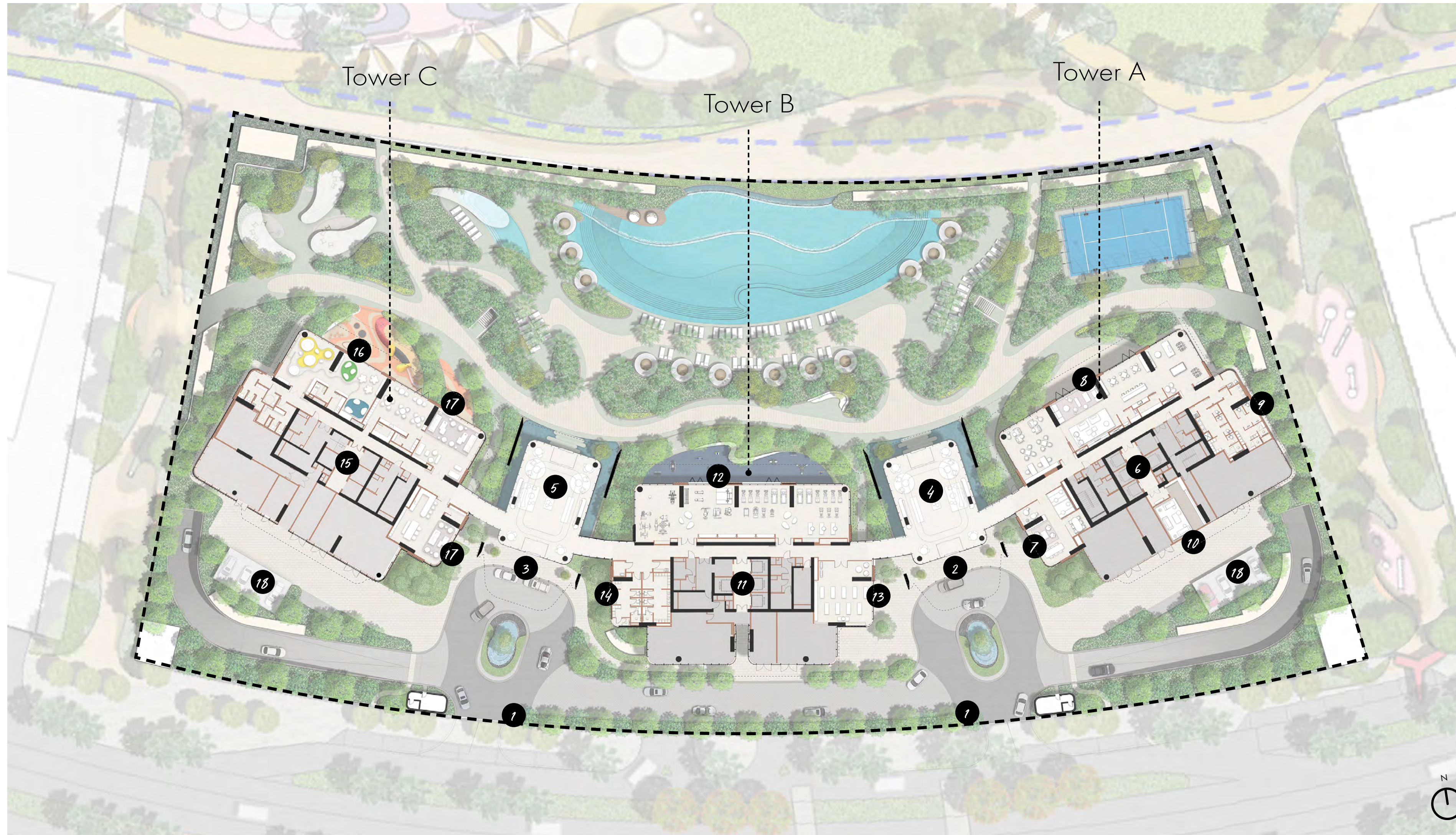
Swimming Pool

Ground Floor

Plan



Ground Floor Plan



- 1 Entrance Gate
- 2 Tower A & B Drop-off
- 3 Tower B & C Drop-off
- 4 Lobby & Reception 1
- 5 Lobby & Reception 2
- 6 Tower A Lift Lobby
- 7 Co-working & Art Gallery
- 8 Social Club
- 9 Tower A Pool Changing Rooms
- 10 Cinema
- 11 Tower B Lift Lobby
- 12 Gym
- 13 Yoga Studio
- 14 Tower B Changing Rooms
- 15 Tower C Lift Lobby
- 16 Kids' Club
- 17 Family Lounge
- 18 Visitor Parking



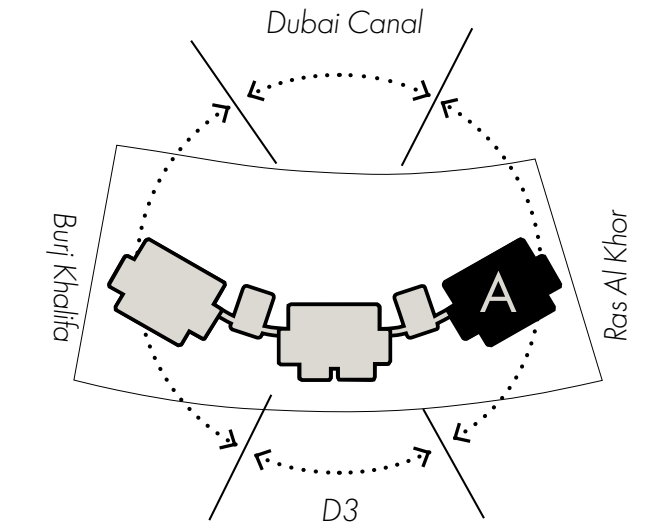
Lobby

Tower A



Amenities

Ground Floor Plan



GOOD VIBES
only



Teenagers' Club



Co-working Space



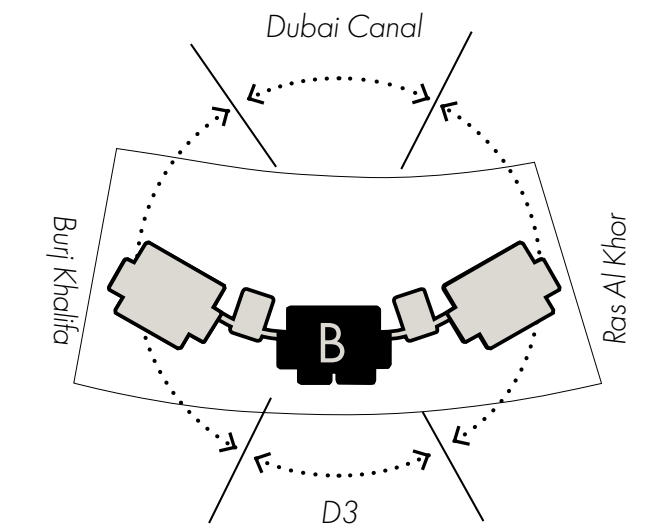
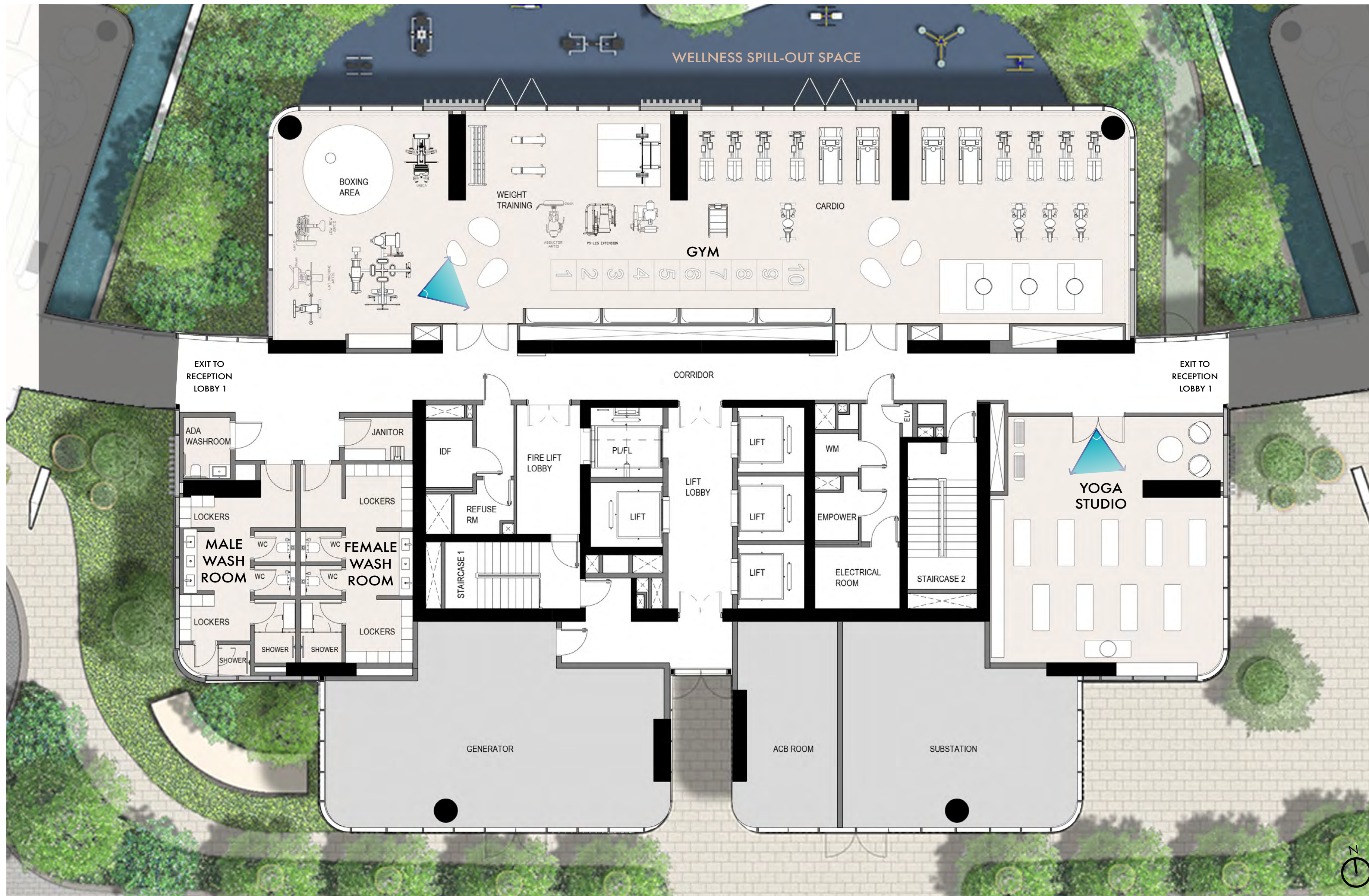
Cinema

Tower B



Amenities

Ground Floor Plan





DON'T
QUIT

LIFT
PUSH
MOVE

Gym



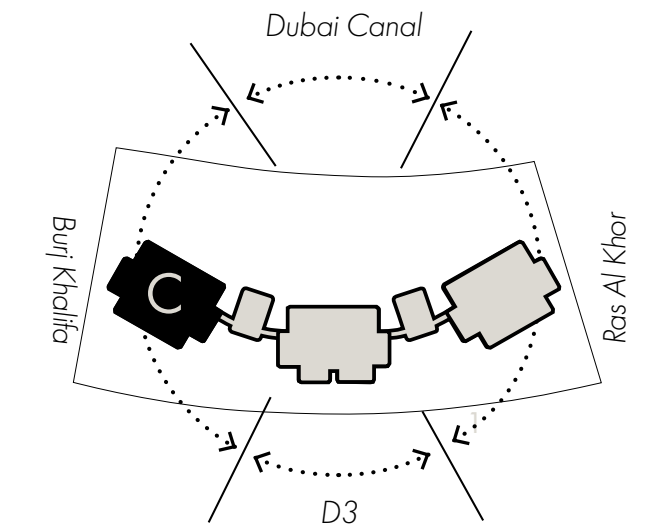
Yoga Studio

Tower C



Amenities

Ground Floor Plan





Family Lounge



Kids' Club



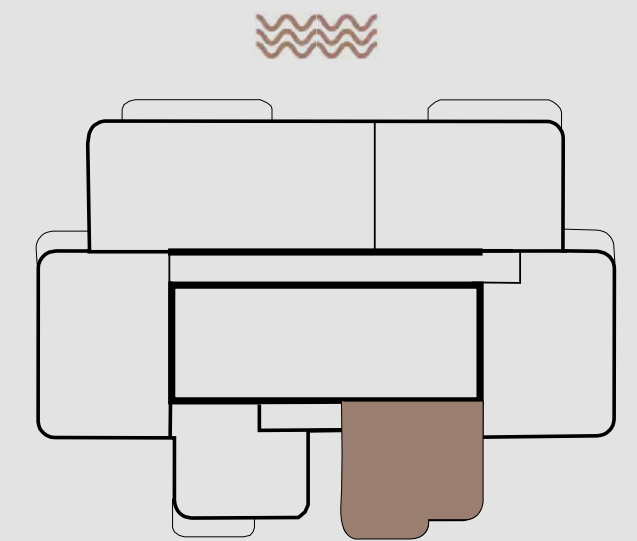
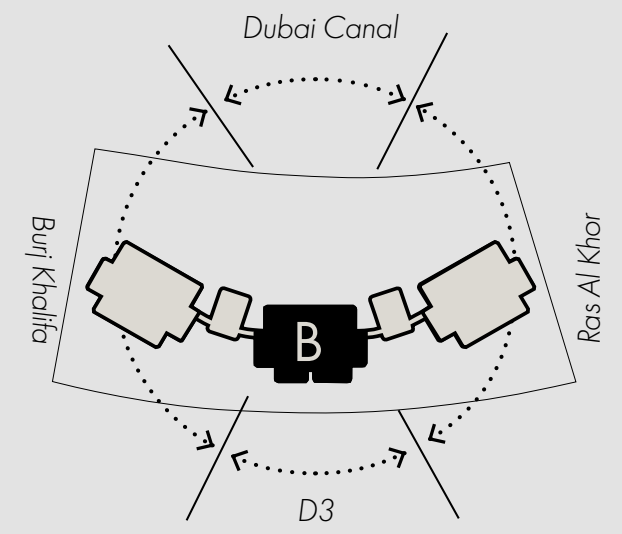
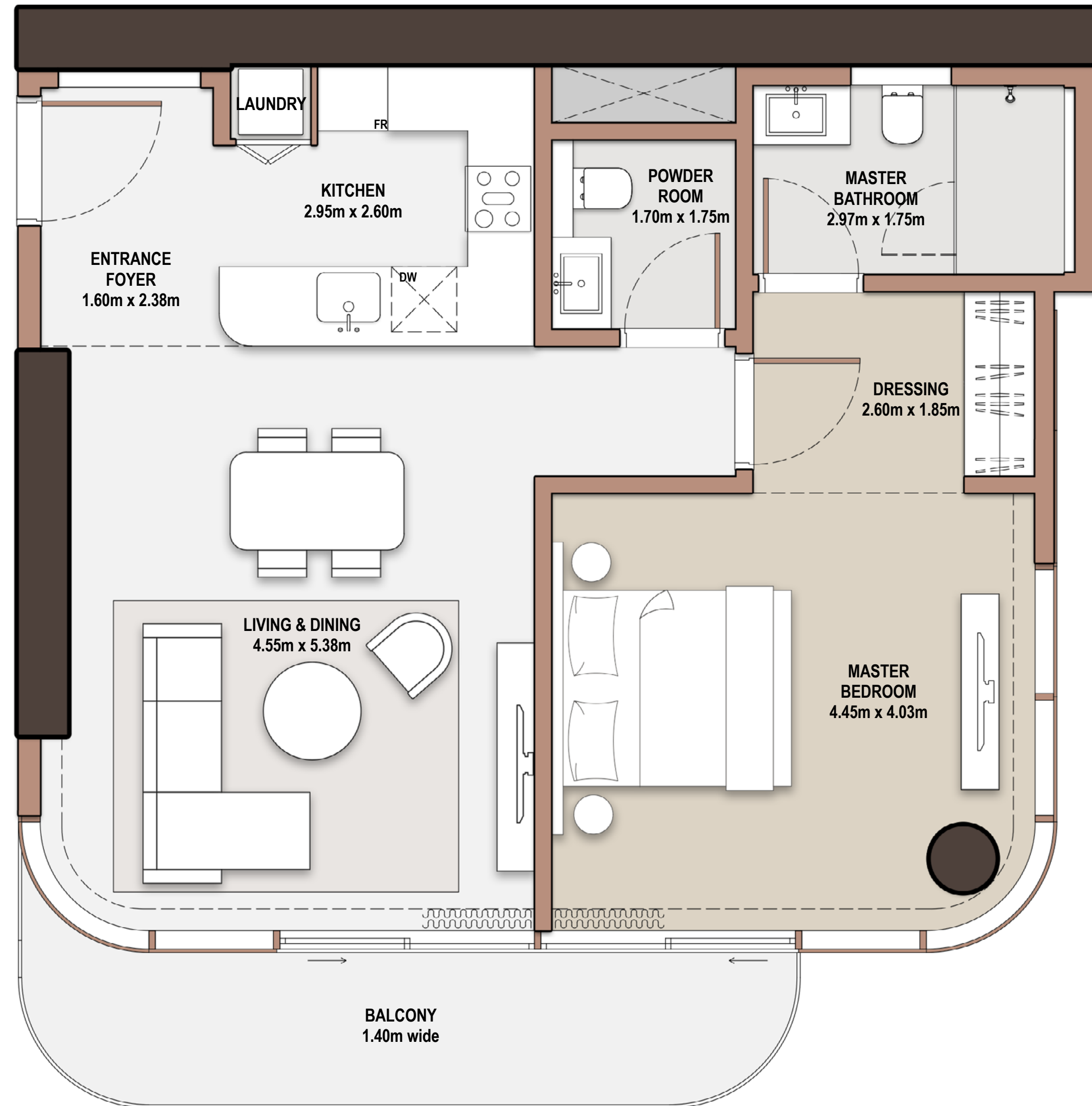
Floor Plans



1-Bedroom

- *Type* B-1B-B.2

Unit Number		501	
Unit Type	Suite Area NIA	SQM SQFT	
B-1B-B.2	77.05	829.36	
Balcony Area	Total Area NSA	SQM SQFT	
10.25 110.33	87.30	939.69	



FLOOR 1,3,5,7,9,11,13,15,17
19,23,25,27,29,31,33,35

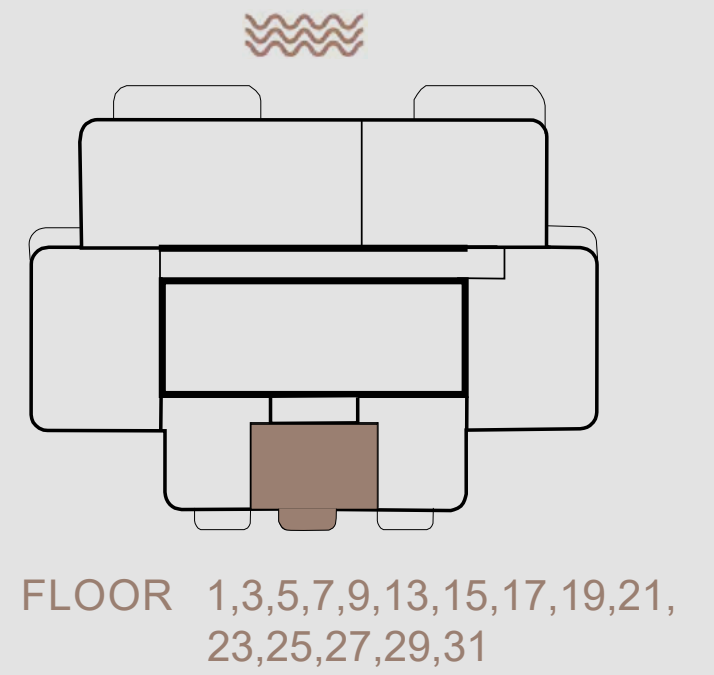
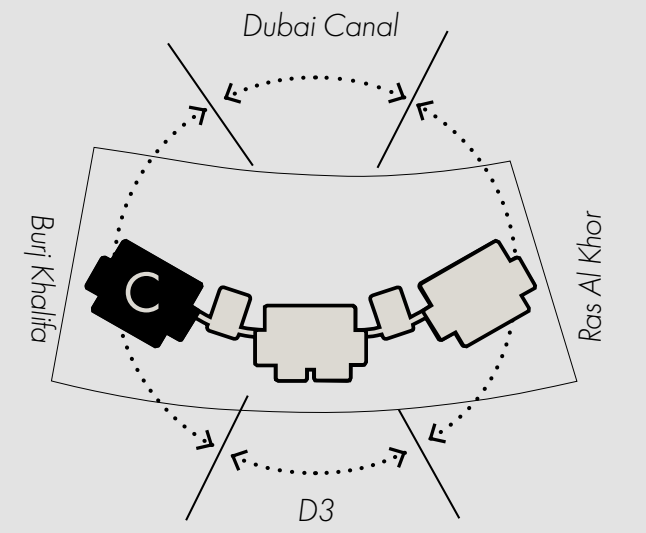
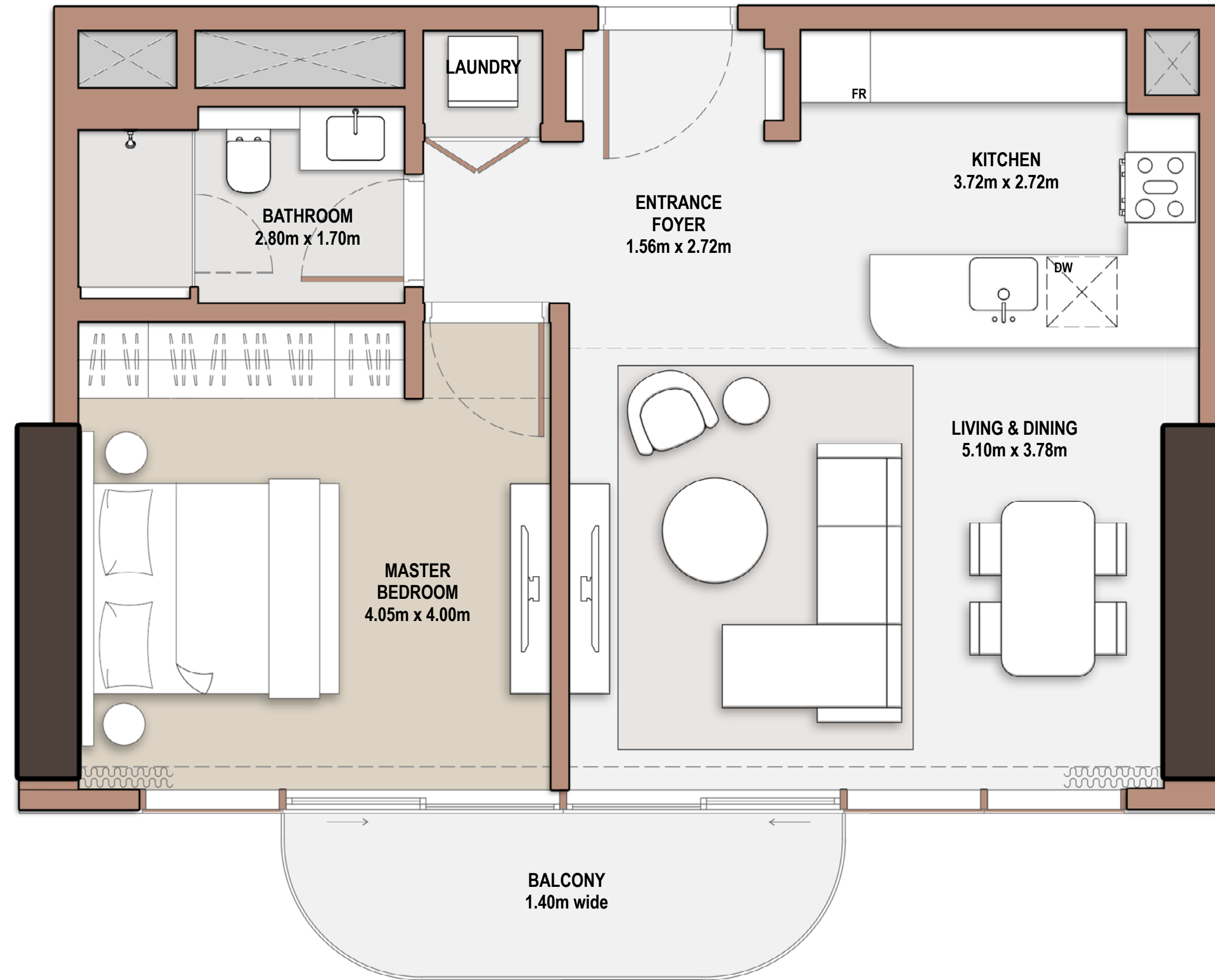


Tower B

1-Bedroom

- *Type* C-1B-A.1

Unit Number		102	
Unit Type	Suite Area NIA	SQM SQFT	
C-1B-A.1	63.56	684.15	
Balcony Area	Total Area NSA	SQM SQFT	
6.56	70.12	754.76	

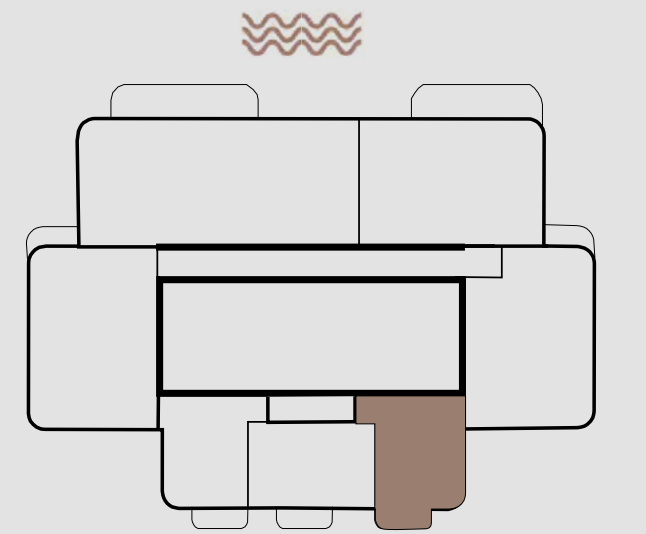
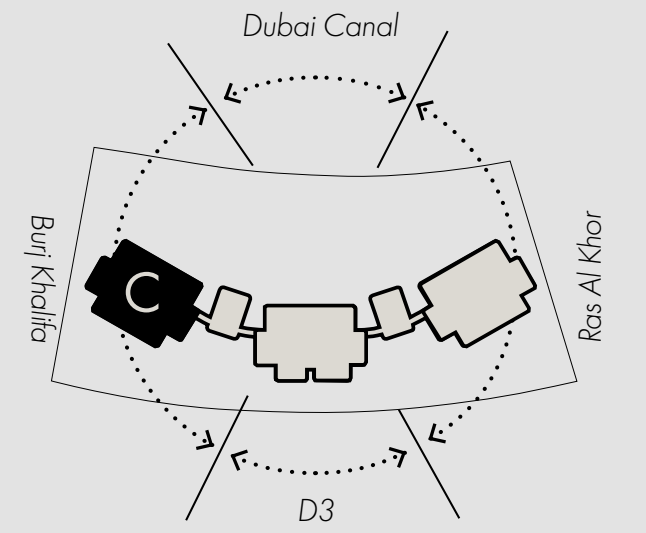


Tower C

1-Bedroom

- *Type* C-1B-C.1

Unit Number		101	
Unit Type	Suite Area NIA	SQM SQFT	
C-1B-C.1	74.72	804.28	
Balcony Area	Total Area NSA	SQM SQFT	
6.64 71.47	81.36	875.75	



FLOOR 1,3,5,7,9,13,15,17,19,21,
23,25,27,29,31

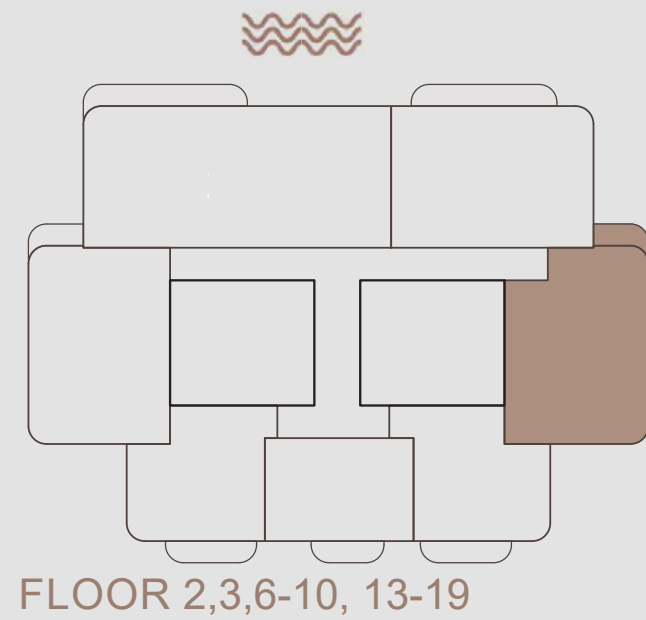
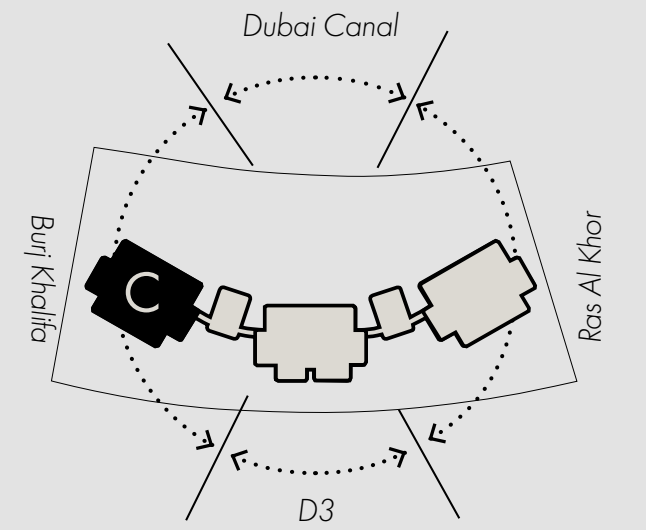
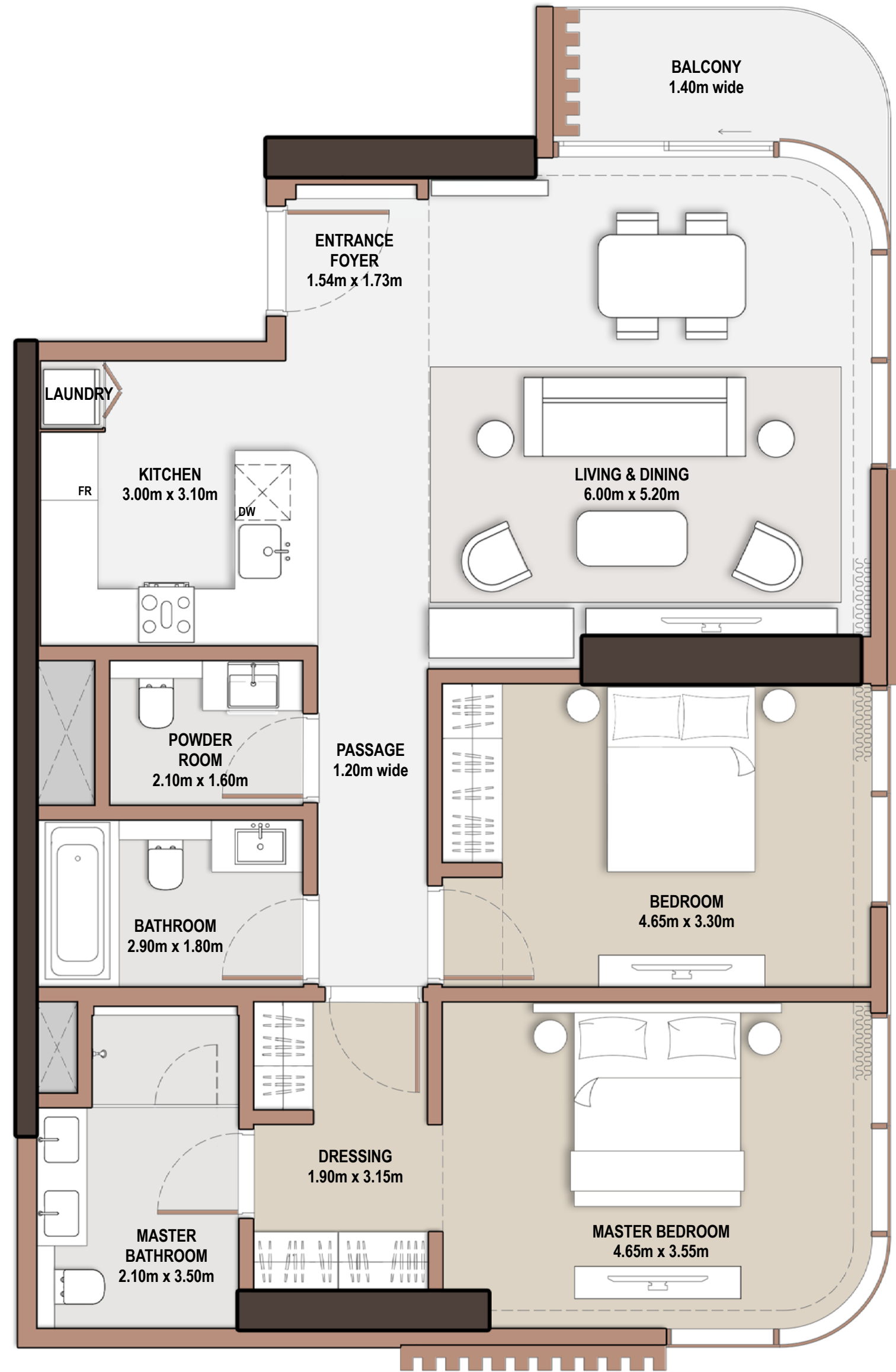


Tower C

2-Bedroom

- *Type* C-2B-A.1

Unit Number		207	
Unit Type	Suite Area NIA	SQM SQFT	
C-2B-A.1	112.16	1,207.28	
Balcony Area	Total Area NSA	SQM SQFT	
5.48	117.64	1,266.27	58.99

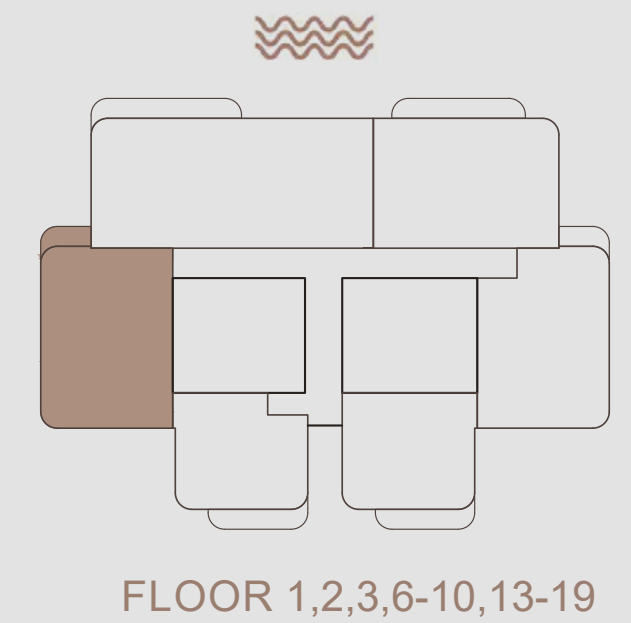
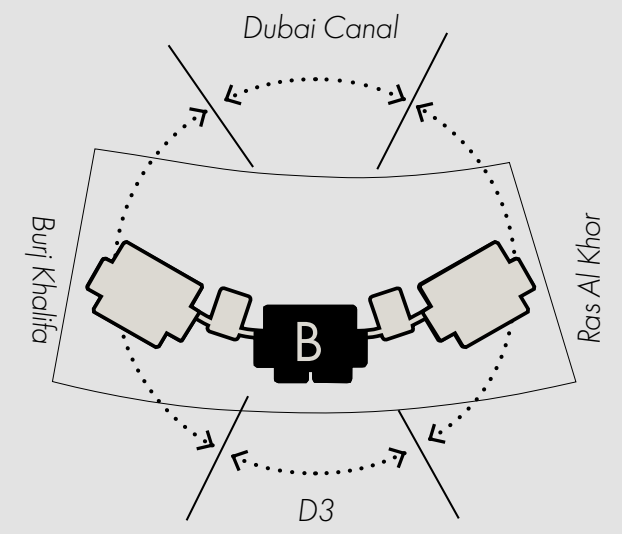
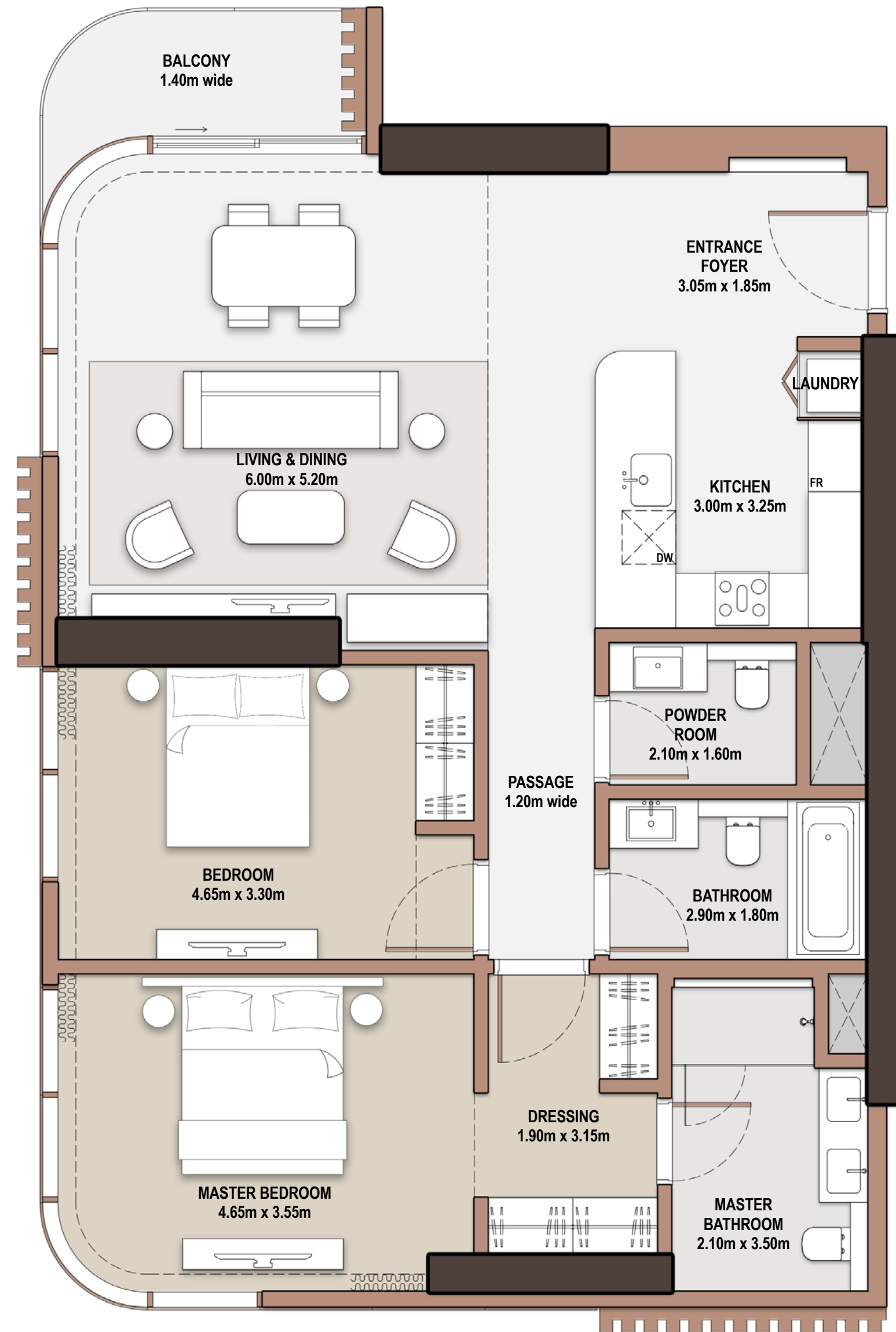


Tower C

2-Bedroom

- *Type* B-2B-B.1

Unit Number		203	
Unit Type	Suite Area NIA	SQM SQFT	
B-2B-B.1	118.21	1,272.40	
Balcony Area	Total Area NSA	SQM SQFT	
5.48 58.99	123.69	1,331.39	

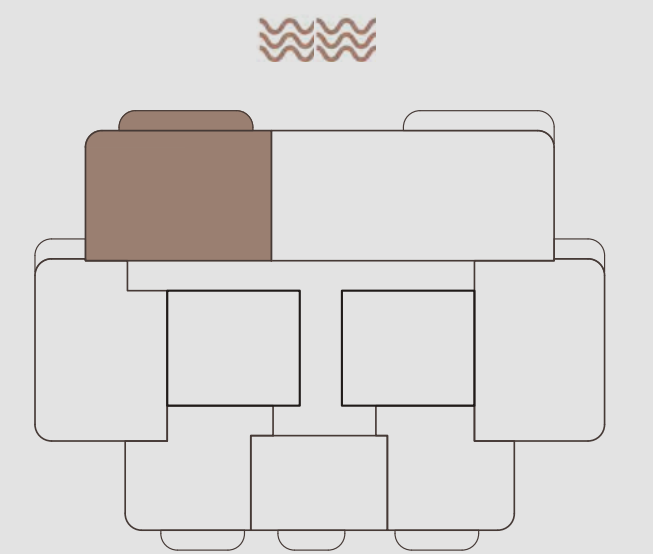
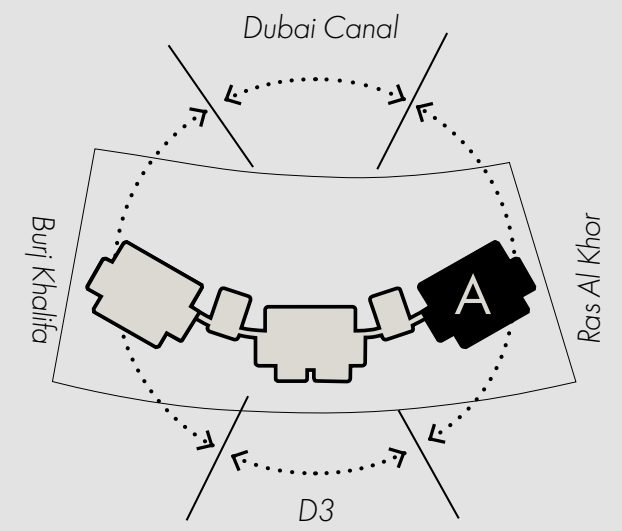
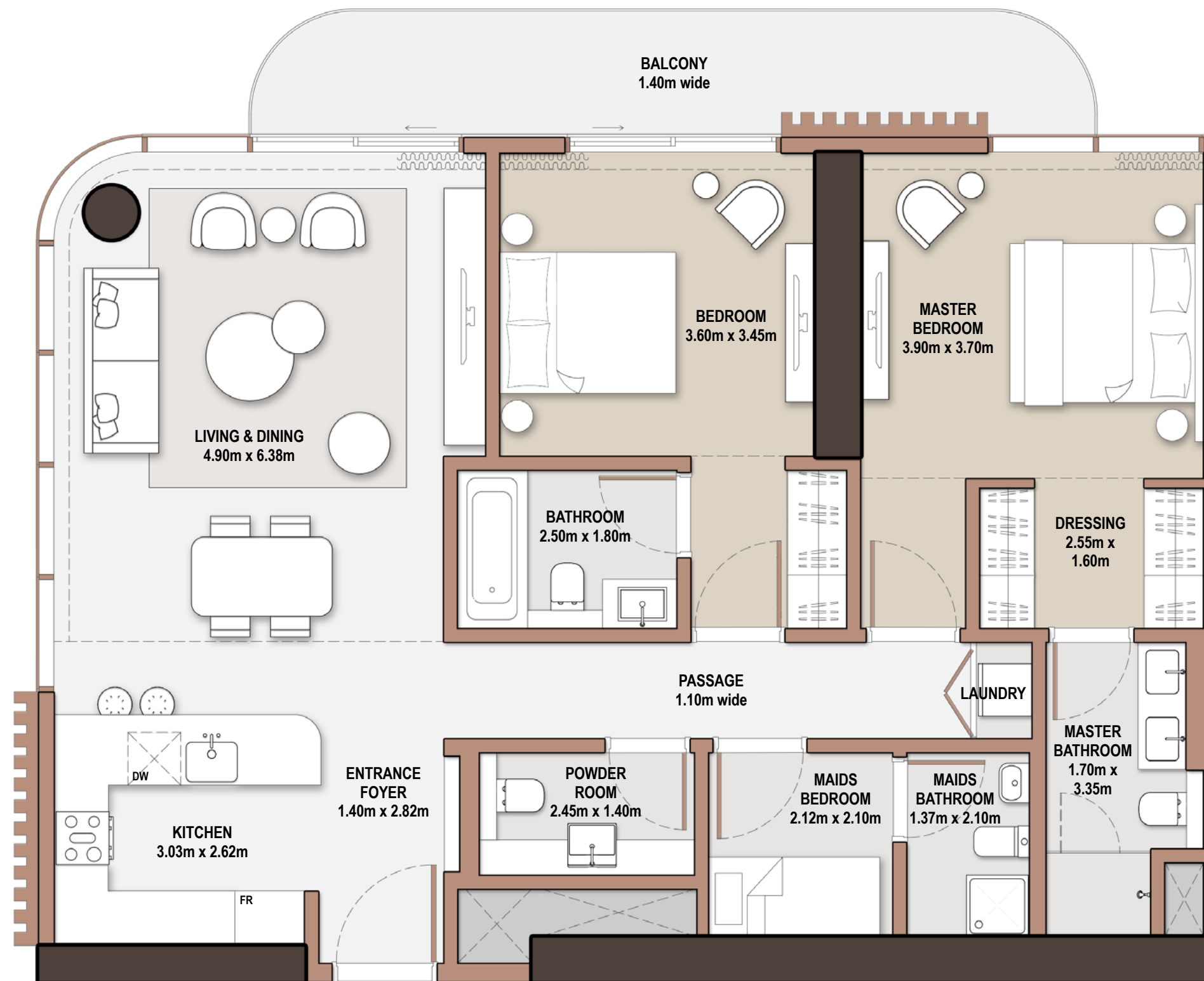


Tower B

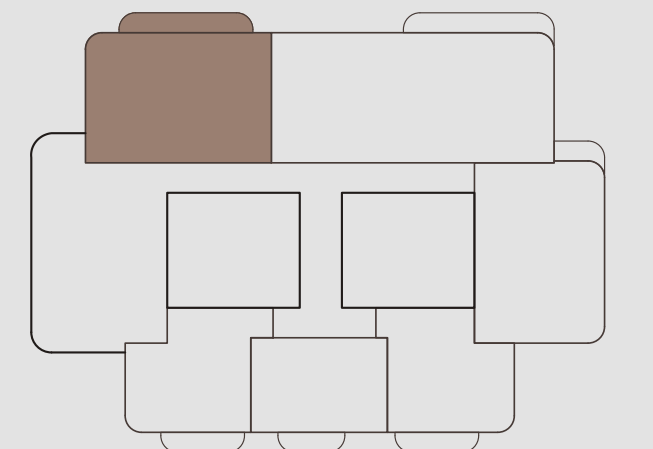
2-Bedroom

- *Type* A-2BM-A.1

Unit Number		205, 405, 605, 804, 1005, 1205, 1405, 1805, 2005, 2205	
Unit Type	Suite Area NIA	SQM SQFT	120.34 1,295.33
A-2BM-A.1			
Balcony Area	Total Area NSA	SQM SQFT	134.11 1,443.55
13.77 148.22			



FLOOR 2, 4, 6, 10, 12, 14, 18, 20, 22



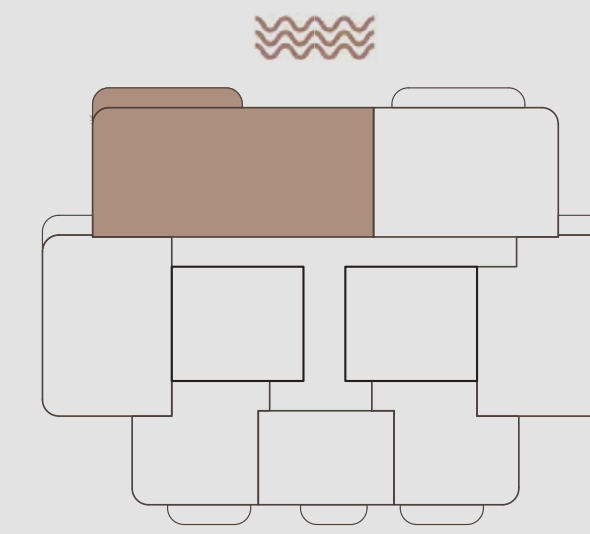
FLOOR 8



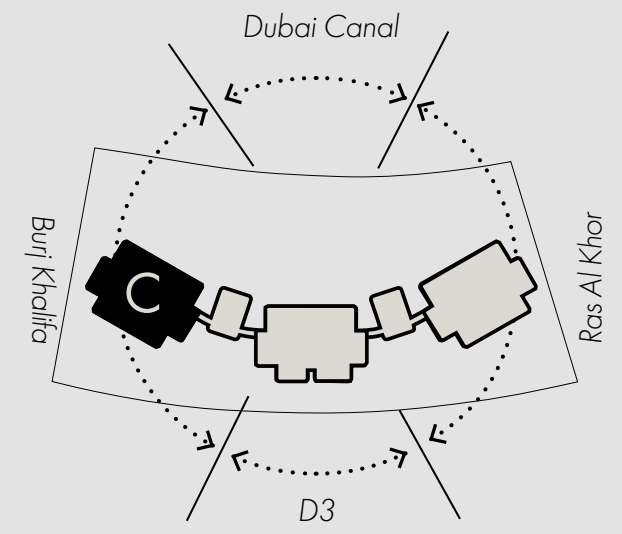
Tower A

3-Bedroom

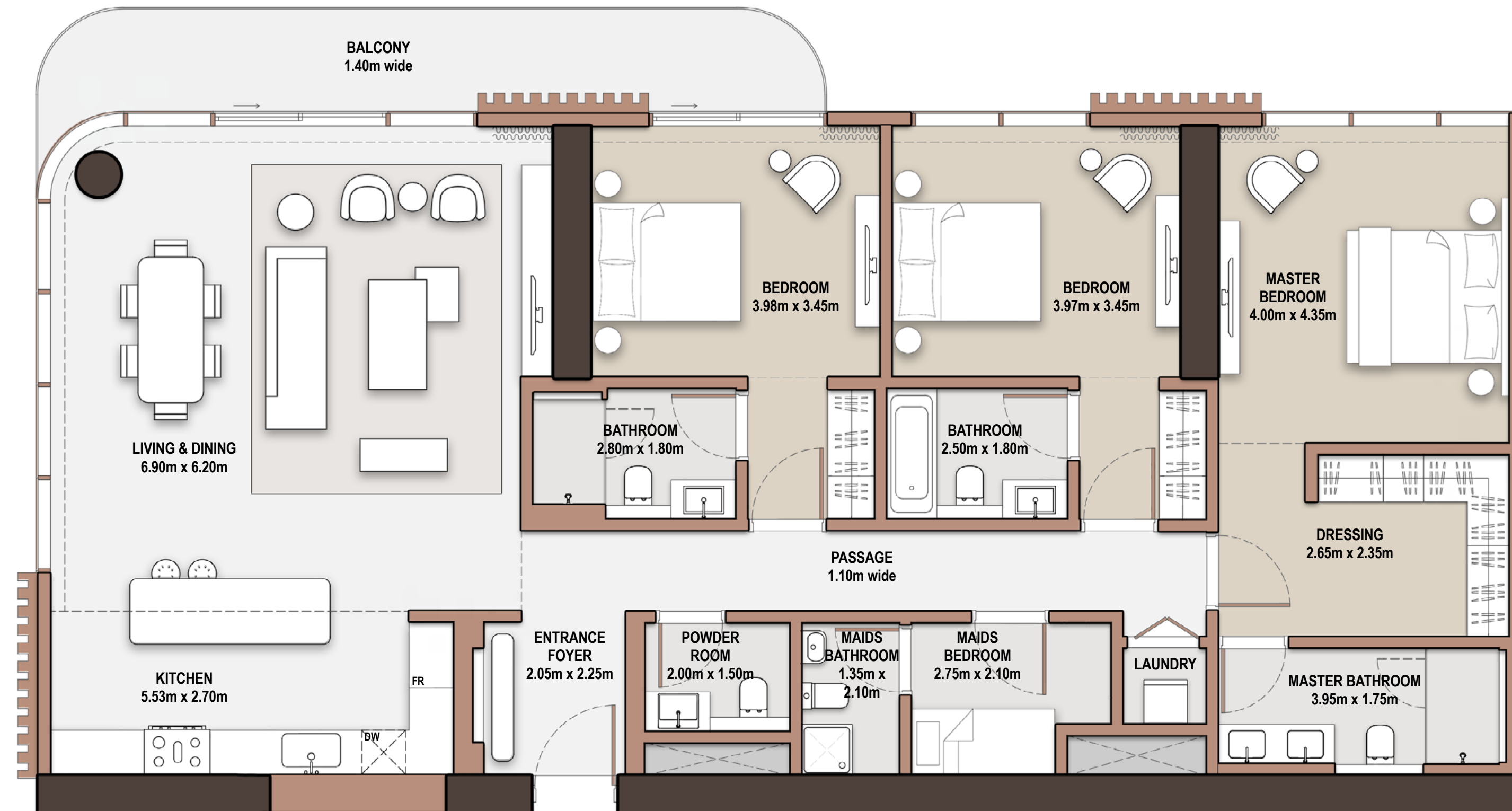
- *Type* C-3B-A.1



FLOOR 2,4,6,8,10,14,16,18



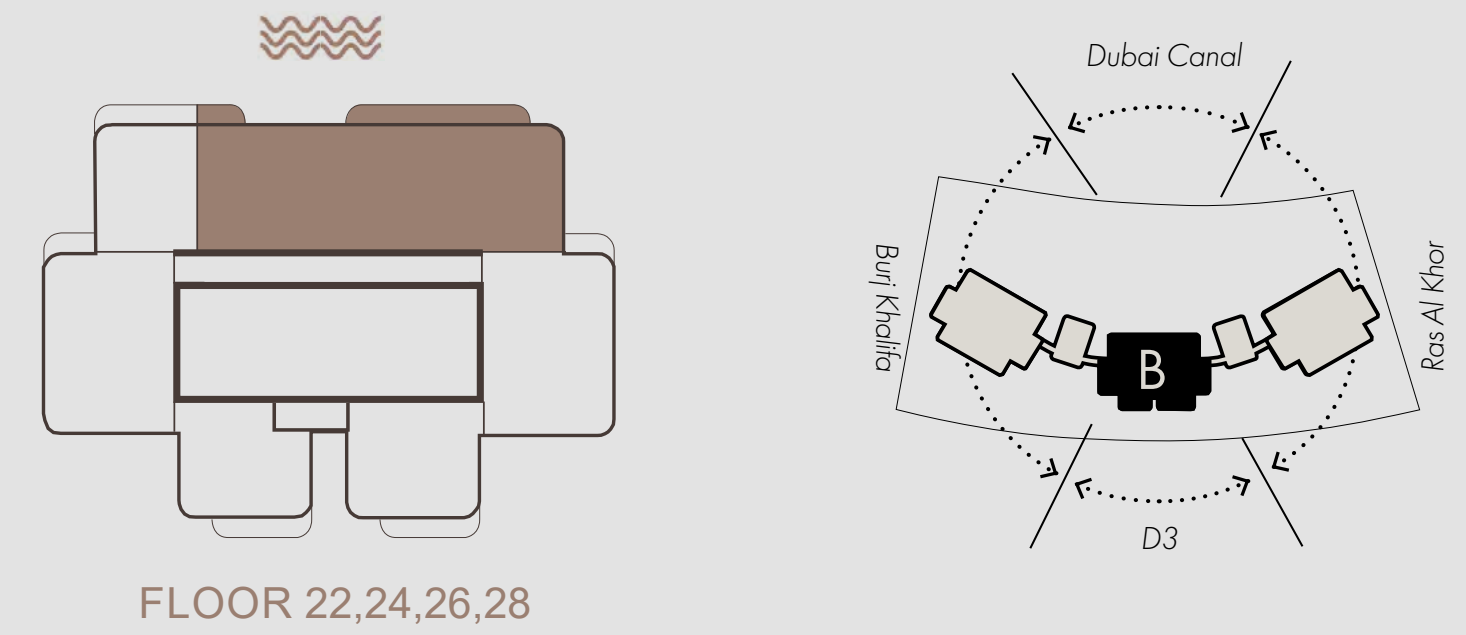
Unit Number		205	
Unit Type	Suite Area NIA	SQM SQFT	
C-3B-A.1	184.38	1,984.65	
Balcony Area	Total Area NSA	SQM SQFT	
15.68 168.78	200.06	2,153.43	



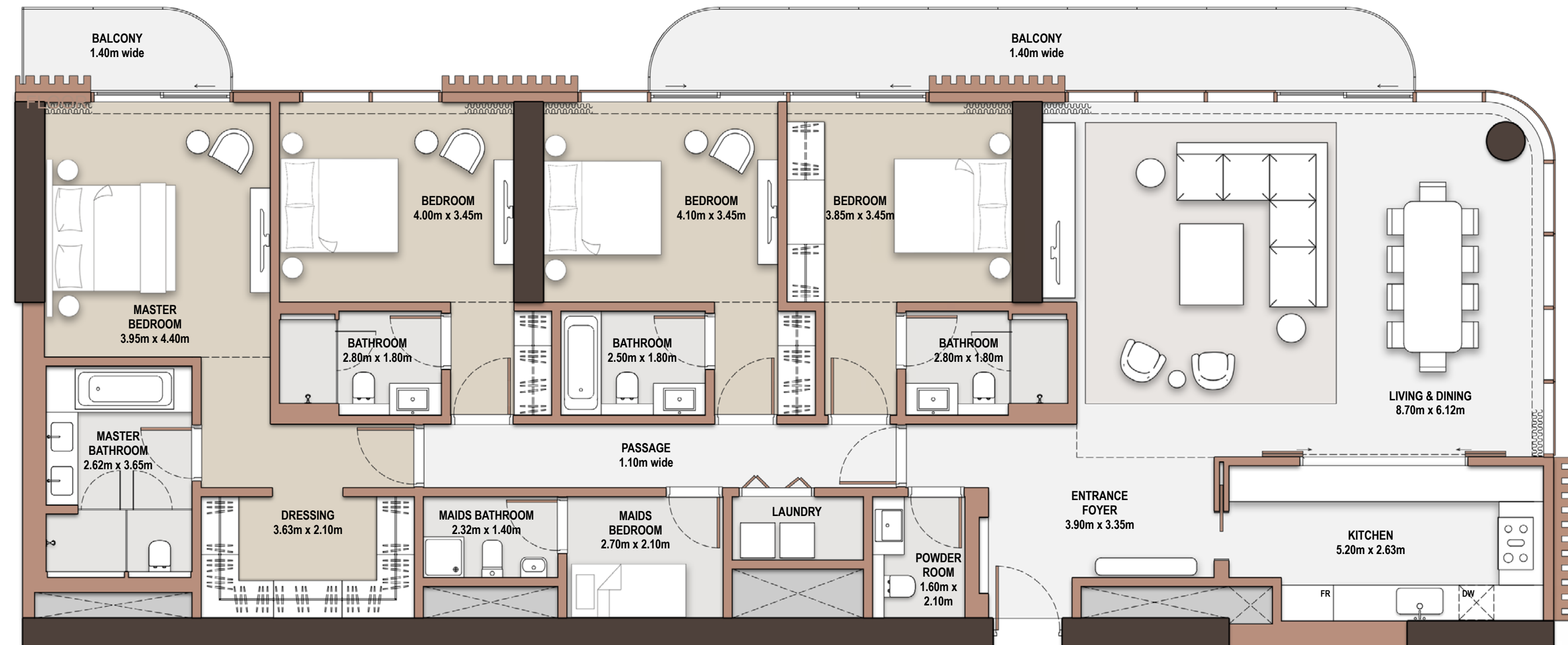
Tower C

4-Bedroom

- *Type* B-4B-A.1



Unit Number		2204	
Unit Type	Suite Area NIA	SQM SQFT	
B-4B-A.1	233.40	2,512.29	
Balcony Area	Total Area NSA	SQM SQFT	
24.10 259.41	257.50	2,771.70	

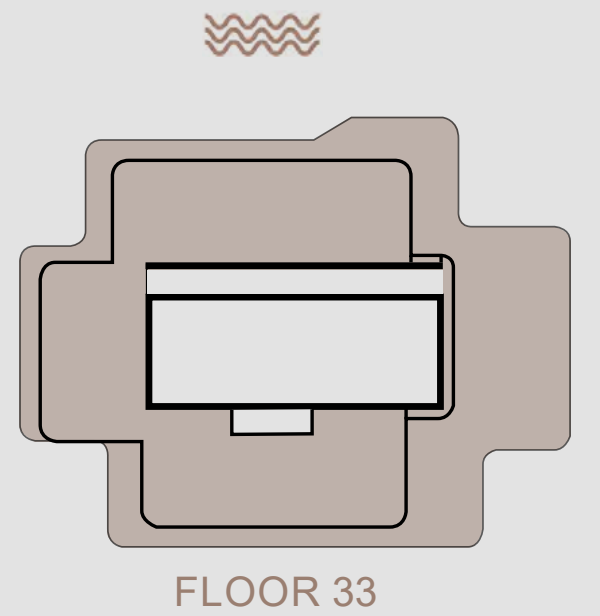
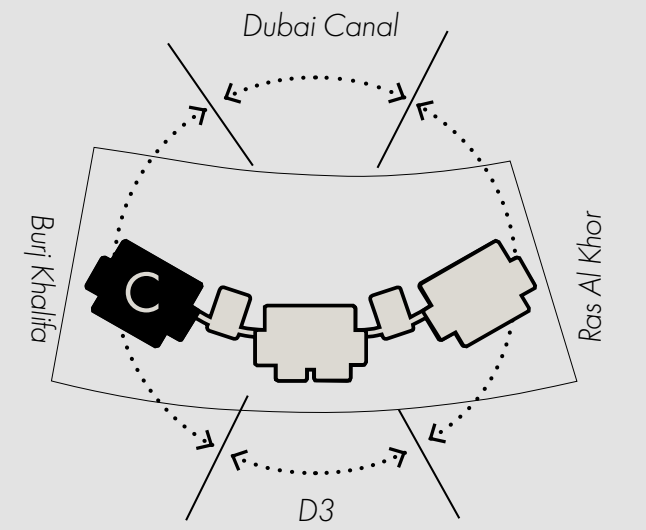


Tower B

Penthouse 5-Bedroom

- *Type* C-PH-A

Unit Number		3301	
Unit Type	Suite Area NIA	SQM SQFT	
C-PH-A	453.23	4,878.52	
Balcony Area	Total Area NSA	SQM SQFT	
360.00 3,875.00	813.23	8,753.53	



Tower C



1-Bedroom | Living Area



2-Bedroom | Living Area



3-Bedroom | Living Area



3-Bedroom | Living Area



3-Bedroom | Bedroom



3-Bedroom | Bathroom



4-Bedroom | Living Area



4-Bedroom | Living Area



Penthouse | Living Area



Penthouse | Living Area



Penthouse | Master Bedroom



Penthouse | Master Bathroom

Sky gardens



Sky Gardens



Tower A Sky Gardens

A1

Reading / Quiet Room



A2

Sky Lounge



A3

Wellness Studio



Tower B Sky Gardens

B1

Reading / Quiet Room



B2

Wellness Studio



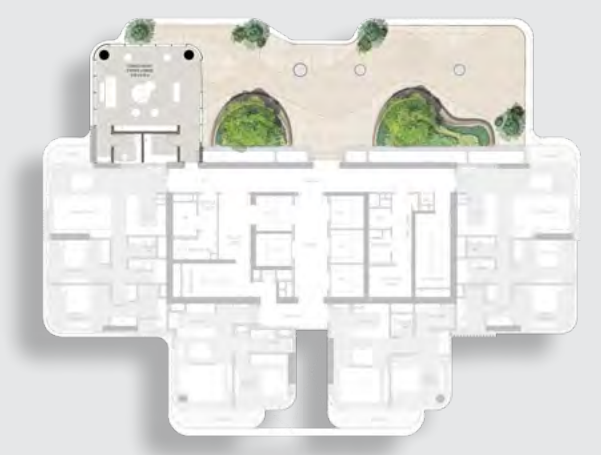
B3

Sky Lounge



B4

Events Lounge



Tower C Sky Gardens

C1

Reading / Quiet Room



C2

Sky Lounge



C3

Wellness Terrace



Tower A



Penthouse Sky Terrace

- Private Gardens
- 30th Floor

A3

Wellness Studio

- 24th Floor

A2

Sky Lounge

- 15th Floor

A1

Reading/ Quiet Room

- 8th Floor

Tower A

Quiet/Reading Room | Tower A | 8th Floor





Sky Lounge | Tower A | 15th Floor

Wellness Studio | Tower A | 24th Floor



Tower B

Sky Garden 3 - Events Lounge

- 29th Floor

B4

Penthouse Sky Terrace

- Private Gardens
- 36th Floor

Sky Lounge

- 20th Floor

B3

Sky Garden 2 - Wellness Studio

- 9th Floor

B2

Sky Garden 1 - Reading/Quiet Room

- 6th Floor

B1



Tower B



Reading/ Quiet Room | Tower B | 6th Floor



Wellness Studio | Tower B | 9th Floor



Events Lounge | Tower B | 29th Floor

Tower C

Penthouse Sky Terrace

- Private Gardens
- 33rd Floor

Sky Garden 3 - Wellness Terrace

- 26th Floor

Sky Lounge

- 11th Floor

Sky Garden 1 - Reading/Quiet Room

- 4th Floor



Tower C





Wellness Terrace | Tower C | 26th Floor



Project



Summary



Overall Characteristics

HEIGHT

- Tower A: 3 Basements + Ground + 30 Floors
- Tower B: 3 Basements + Ground + 37 Floors
- Tower C: 3 Basements + Ground + 33 Floors

RESIDENTIAL OFFERING

- 557 Residential Units
- 1–4 Bedroom Residences
- 3 Penthouses

Indoor Amenities

1. Grand Double-height Entrance Lobbies and Receptions
2. Co-working & Gallery Space
3. Kids' Club (Indoor & Outdoor)
4. Social Club, Arcade, Lounge & Library (Indoor & Outdoor)
5. Cinema Room
6. Gym (Indoor & Outdoor)
7. Yoga Studio
8. Family Lounges with Multi-purpose Spaces
9. Sky Lounge
10. Events Lounge
11. Reading / Quiet Rooms
12. Wellness Studio

Outdoor Amenities

1. Padel Court
2. Resort-style Family Pool & Lap Pool
3. Kids' Pool
4. Kids' Outdoor Play Area
5. BBQ Area / California Rooms
6. Social Seating & Cabanas
7. Sky Garden Gathering Spaces
8. Sky Garden Wellness Terrace

Overall

Unit Type	Total Count	Avg. Suite Area	Avg. Balcony Area	Avg. Total Area
1-Bedroom	237	770.6 ft ²	91.8 ft ²	862.4 ft ²
2-Bedroom	146	1224.5 ft ²	69.8 ft ²	1314.3 ft ²
2-Bedroom + Maid	54	1295.3 ft ²	154.2 ft ²	1449.5 ft ²
3-Bedroom + Maid	98	1991.9 ft ²	170.6 ft ²	2162.5 ft ²
4-Bedroom + Maid	19	2513.6 ft ²	277.9 ft ²	2791.5 ft ²
Penthouses	3	5431.5 ft ²	4325.3 ft ²	9756.8 ft ²
Total	557			

Tower A Characteristics

HEIGHT

- Tower A - 3 Basements + Ground + 30 Floors

RESIDENTIAL OFFERING

- 182 Residential Units
- 1- 4 Bedroom Residences
- 1 Penthouse

Indoor Amenities

1. Grand Double-height Entrance Lobby & Reception
2. Co-working & Gallery Space
3. Social Club, Arcade, Lounge & Library (Indoor & Outdoor)
4. Cinema Room
5. Pool Changing Rooms
6. Sky Lounge (15th Floor)
7. Reading / Quiet Rooms (8th Floor)
8. Wellness Studio (24th Floor)

Outdoor Amenities

1. Social Spill-out Area
2. Sky Garden Outdoor Reading Space (8th Floor)
3. Sky Garden Gathering Spaces (15th Floor)
4. Sky Garden Wellness Terrace (24th Floor)

Tower A

Unit Type	Total Count	Avg. Suite Area	Avg. Balcony Area	Avg. Total Area
1-Bedroom	81	757.8 ft ²	76.9 ft ²	834.7 ft ²
2-Bedroom	45	1243.8 ft ²	59.8 ft ²	1303.6 ft ²
2-Bedroom + Maid	21	1295.3 ft ²	154.2 ft ²	1449.5 ft ²
3-Bedroom + Maid	30	1981.9 ft ²	168.1 ft ²	2157.2 ft ²
4-Bedroom + Maid	4	2567.3 ft ²	277.3 ft ²	2844.65 ft ²
Penthouses	1	4688.0 ft ²	4526.2 ft ²	9214.2 ft ²
Total	182			

Tower B Characteristics

HEIGHT

- Tower B - 3 Basements + Ground + 37 Floors

RESIDENTIAL OFFERING

- 177 Residential Units
- 1 - 4 Bedroom Residences
- 1 Penthouse

Indoor Amenities

1. Grand Double-height Entrance Lobbies & Receptions
2. Gym & Changing Rooms
3. Yoga Studio
4. Reading / Quiet Rooms (6th Floor)
5. Wellness Studio (9th Floor)
6. Sky Lounge (20th Floor)
7. Events Lounge (29th Floor)

Outdoor Amenities

1. Wellness Spill-out Area
2. Sky Garden Outdoor Reading Space (6th Floor)
3. Sky Garden Wellness Terrace (9th Floor)
4. Sky Garden Gathering Spaces (20th Floor)
5. Sky Garden Outdoor Events & Flexible Space (29th Floor)

Tower B

Unit Type	Total Count	Avg. Suite Area	Avg. Balcony Area	Avg. Total Area
1-Bedroom	66	796.3 ft ²	110.2 ft ²	906.5 ft ²
2-Bedroom	51	1252.8 ft ²	62.9 ft ²	1315.7 ft ²
2-Bedroom + Maid	16	1295.4 ft ²	155.9 ft ²	1451.3 ft ²
3-Bedroom + Maid	36	1995.0 ft ²	177.3 ft ²	2172.3 ft ²
4-Bedroom + Maid	7	2512.2 ft ²	276.5 ft ²	2788.7 ft ²
Penthouses	1	8803.4 ft ²	3865.8 ft ²	12387 ft ²
Total	177			

Tower C Characteristics

HEIGHT

- Tower C - 3 Basements + Ground + 33 Floors

RESIDENTIAL OFFERING

- 198 Residential Units
- 1- 4 Bedroom Residences
- 1 Penthouse

Indoor Amenities

1. Grand Double-height Entrance Lobby & Reception
2. Family Lounge Spaces
3. Kids' Club
4. Pool Changing Rooms
5. Reading / Quiet Rooms (4th Floor)
6. Sky Lounge (11th Floor)

Outdoor Amenities

1. Wellness Outdoor Space
2. Kids' Play Area
3. Sky Garden Outdoor Reading Space (4th Floor)
4. Sky Garden Gathering Spaces (11th Floor)
5. Sky Garden Wellness Terrace (26th Floor)

Tower C

Unit Type	Total Count	Avg. Suite Area	Avg. Balcony Area	Avg. Total Area
1-Bedroom	90	757.9 ft ²	77.0 ft ²	834.9 ft ²
2-Bedroom	50	1236.9 ft ²	86.9 ft ²	1323.8 ft ²
2-Bedroom + Maid	17	1295.4 ft ²	155.4 ft ²	1450.8 ft ²
3-Bedroom + Maid	32	1991.6 ft ²	166.6 ft ²	2158.2 ft ²
4-Bedroom + Maid	8	2512.2 ft ²	280.1 ft ²	2792.6 ft ²
Penthouses	1	4686.8 ft ²	3879.4 ft ²	8566.2 ft ²
Total	198			

THE EDIT AT 3



Starting From

2.0M
1-BEDROOM

4.0M
2-BEDROOM

5.1M
2-BEDROOM + MAID

7.7M
3-BEDROOM

10.7M
4-BEDROOM

34.1M
PENTHOUSE

*ALL PRICES ARE IN AED

Payment Plan

20%
DOWN PAYMENT
ON BOOKING

10%
1ST INSTALMENT
JUNE 2026

5%
2ND INSTALMENT
OCTOBER 2026

10%
3RD INSTALMENT
MARCH 2027

10%
4TH INSTALMENT
AUGUST 2027

10%
5TH INSTALMENT
JANUARY 2028

10%
6TH INSTALMENT
MAY 2028

25%
7TH INSTALMENT
AUGUST 2030
(HANDOVER)

*ESTIMATED CONSTRUCTION COMPLETION: AUGUST 2030

Do's

- Only use the link provided in the registration notification.
- Only register clients with genuine interest.
- Fill out your client's details where it states 'customer' and your personal details where it states 'broker'.
- To avoid delays at the booking stage, please ensure that your client's email address and mobile number are correct, and their name is exactly as it appears on their passport.
- Select the correct agency name.

Don'ts

- Do not register your client before receiving the official registration notification.
- Registrations received before the official notification will be excluded.
- Do not fill in your email ID in the client's email ID field.
- Do not fill in your mobile number in the client's mobile number field.
- Do not register the same client more than once.
- Do not register inaccurate client names.
- Do not forge, alter or duplicate tokens. This will significantly reduce your chances of obtaining a unit and increase the possibility of being excluded from future launches.

Online Registration Process

