



GHARBI II

RESIDENCES

By Rabdan Developments

WWW.RABDANDEVELOPMENTS.AE

☎ 800RBDN

مخططات الطوابق

FLOOR PLANS

STUDIO / TYPE 01

Second Floor	201-210
Sixth Floor	601,606,607,612
Tenth Floor	1001,1006,1007,1012
Fourteenth Floor	1401,1406,1407,1412
Eighteenth Floor	1801,1806,1807,1812
Twenty-Second Floor	2201,2206,2207,2212

INTERNAL LIVING AREA

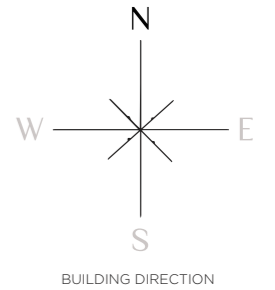
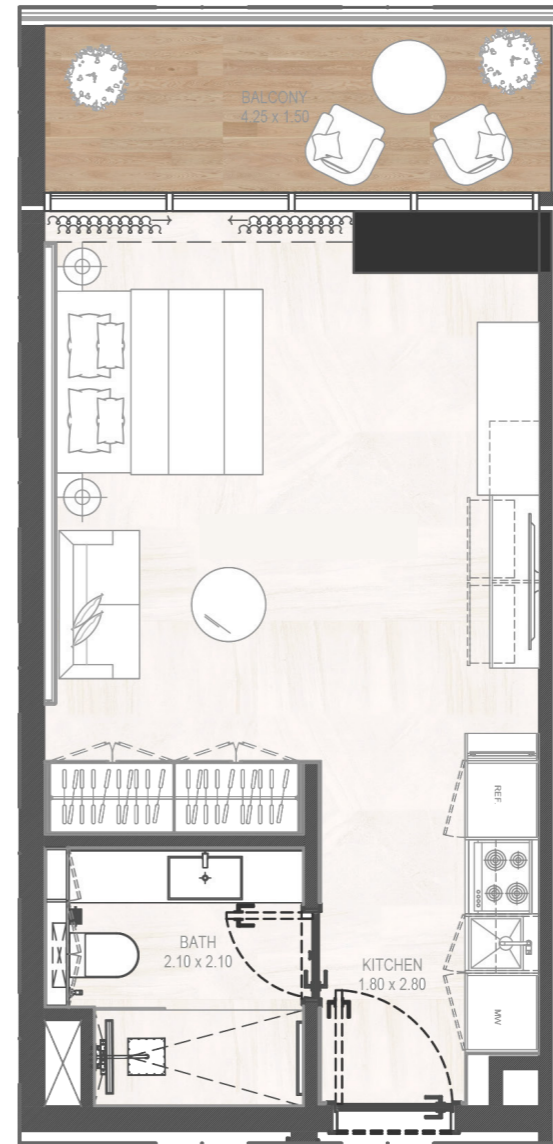
314.84ft²

OUTDOOR LIVING AREA

75.56ft²

TOTAL LIVING AREA

390.41ft²



Disclaimer: 1. All room dimensions are measured to structural elements and exclude wall finishes and construction tolerances. 2. All dimensions have been provided by our consultant architects. 3. All materials, dimensions and drawings are approximate. Information is subject to change without notice. 4. Actual suite area may vary from the stated area. Drawings not to scale. The developer reserves the right to make revisions. 5. Calculation of suite area is measured as the area bounded by the centre line of demising or partition walls separating one unit from another unit, the exterior face of all exterior walls, and the exterior face of the corridor wall enclosing the adjoining unit. 6. Calculation of balcony area is measured as the area bounded by the centre line of demising or partition walls separating one unit from another unit, the outmost face of the enclosing guard and the external face of the adjoining balcony. 7. The units are measured at typical floor in the building. Columns may vary in size depending on the floor level. 8. For each unit type, unit sizes and details might be slightly different. Please refer to the sales and purchase agreement for the actual size of each specific unit.

STUDIO / TYPE 02

Fourth Floor	403,404,409,410
Eighth Floor	803,804,809,810
Twelfth Floor	1203,1204,1209,1210
Sixteenth Floor	1603,1604,1609,1610
Twentieth Floor	2003,2004,2009,2010
Twenty-Fourth Floor	2403,2404,2409,2410

INTERNAL LIVING AREA

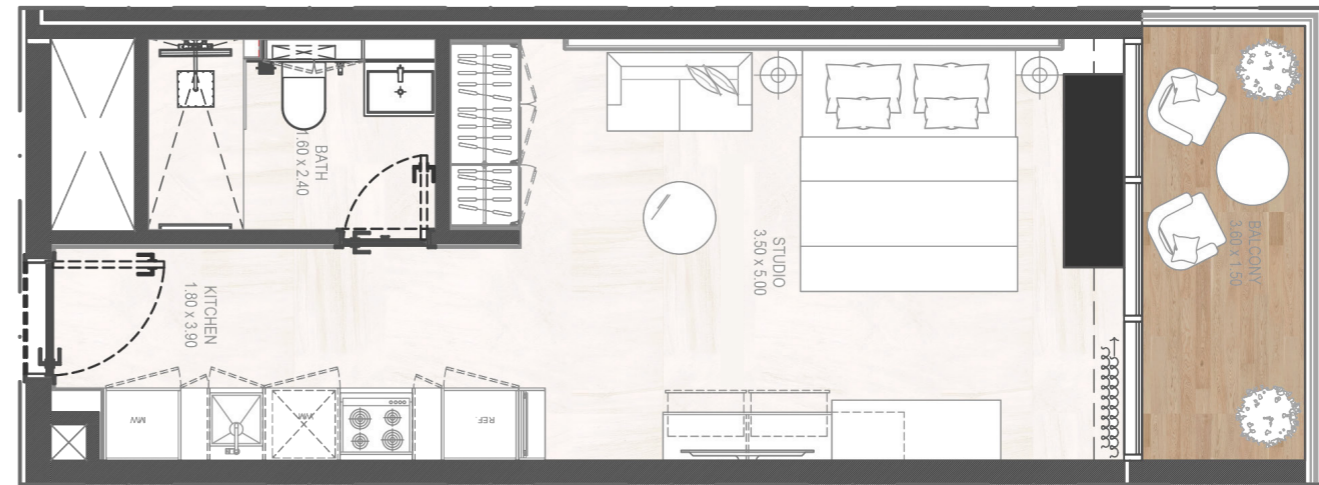
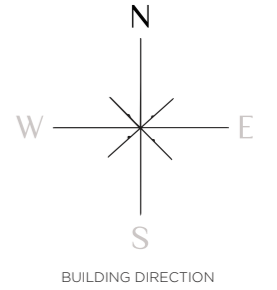
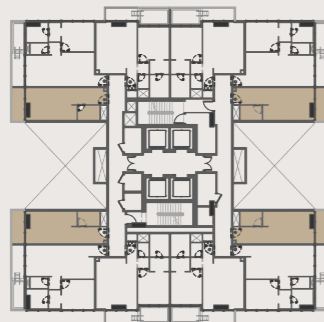
336.37ft²

OUTDOOR LIVING AREA

72.01ft²

TOTAL LIVING AREA

408.38ft²



Disclaimer: 1. All room dimensions are measured to structural elements and exclude wall finishes and construction tolerances. 2. All dimensions have been provided by our consultant architects. 3. All materials, dimensions and drawings are approximate. Information is subject to change without notice. 4. Actual suite area may vary from the stated area. Drawings not to scale. The developer reserves the right to make revisions. 5. Calculation of suite area is measured as the area bounded by the centre line of demising or partition walls separating one unit from another unit, the exterior face of all exterior walls, and the exterior face of the corridor wall enclosing the adjoining unit. 6. Calculation of balcony area is measured as the area bounded by the centre line of demising or partition walls separating one unit from another unit, the outmost face of the enclosing guard and the external face of the adjoining balcony. 7. The units are measured at typical floor in the building. Columns may vary in size depending on the floor level. 8. For each unit type, unit sizes and details might be slightly different. Please refer to the sales and purchase agreement for the actual size of each specific unit.

1BHK / TYPE 01

Second Floor	205,206
--------------	---------

INTERNAL LIVING AREA

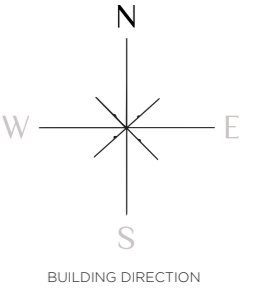
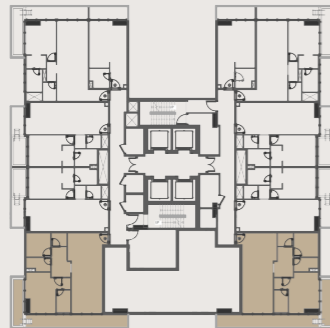
794.81ft²

OUTDOOR LIVING AREA

295.15ft²

TOTAL LIVING AREA

1089.95ft²



Disclaimer: 1. All room dimensions are measured to structural elements and exclude wall finishes and construction tolerances. 2. All dimensions have been provided by our consultant architects. 3. All materials, dimensions and drawings are approximate. Information is subject to change without notice. 4. Actual suite area may vary from the stated area. Drawings not to scale. The developer reserves the right to make revisions. 5. Calculation of suite area is measured as the area bounded by the centre line of demising or partition walls separating one unit from another unit, the exterior face of all exterior walls, and the exterior face of the corridor wall enclosing the adjoining unit. 6. Calculation of balcony area is measured as the area bounded by the centre line of demising or partition walls separating one unit from another unit, the outmost face of the enclosing guard and the external face of the adjoining balcony. 7. The units are measured at typical floor in the building. Columns may vary in size depending on the floor level. 8. For each unit type, unit sizes and details might be slightly different. Please refer to the sales and purchase agreement for the actual size of each specific unit.

1BHK / TYPE 02

Second Floor	203,204,207-208
Fifth Floor	502,503,506,507
Sixth Floor	603,604,609,610
Ninth Floor	902,903,906,907
Tenth Floor	1003,1004,1009,1010
Thirteenth Floor	1302,1303,1306,1307
Fourteenth Floor	1403,1404,1409,1410
Seventeenth Floor	1702,1703,1706,1707
Eighteenth Floor	1803,1804,1809,1810
Twenty-first Floor	2102,2103,2106,2107
Twenty-Second Floor	2203,2204,2209,2210

INTERNAL LIVING AREA

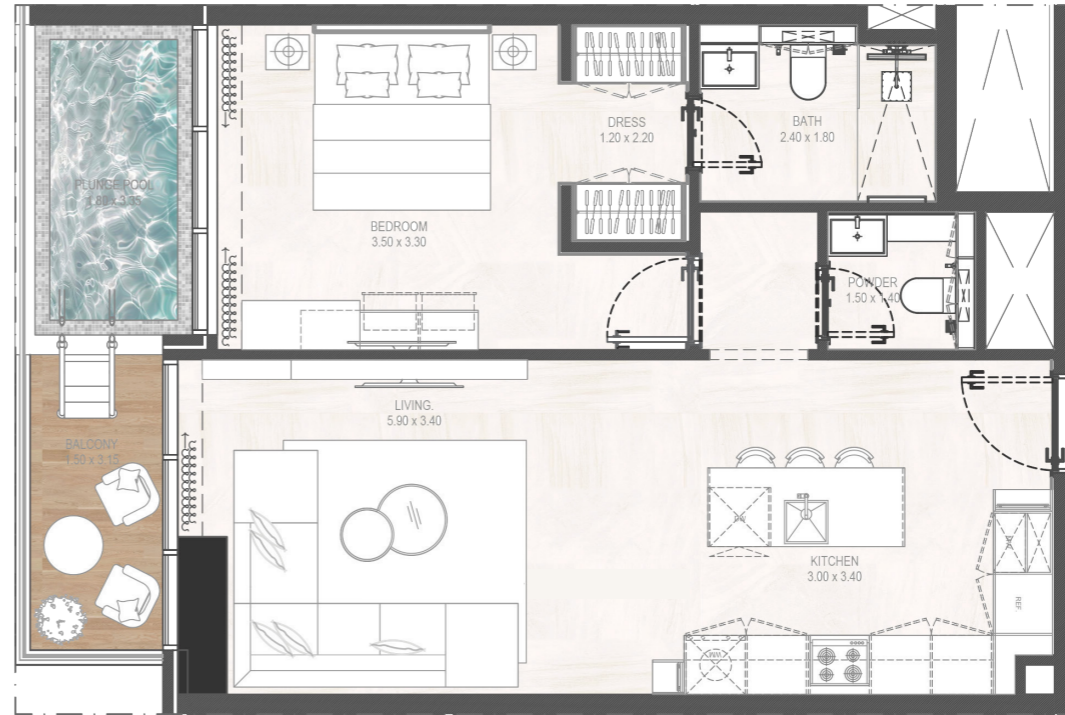
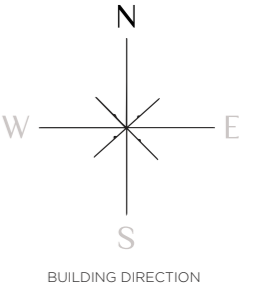
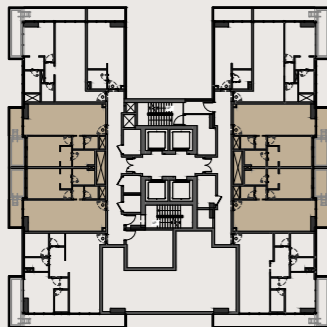
623.02ft²

OUTDOOR LIVING AREA

122.17ft²

TOTAL LIVING AREA

745.19ft²



Disclaimer: 1. All room dimensions are measured to structural elements and exclude wall finishes and construction tolerances. 2. All dimensions have been provided by our consultant architects. 3. All materials, dimensions and drawings are approximate. Information is subject to change without notice. 4. Actual suite area may vary from the stated area. Drawings not to scale. The developer reserves the right to make revisions. 5. Calculation of suite area is measured as the area bounded by the centre line of demising or partition walls separating one unit from another unit, the exterior face of all exterior walls, and the exterior face of the corridor wall enclosing the adjoining unit. 6. Calculation of balcony area is measured as the area bounded by the centre line of demising or partition walls separating one unit from another unit, the outmost face of the enclosing guard and the external face of the adjoining balcony. 7. The units are measured at typical floor in the building. Columns may vary in size depending on the floor level. 8. For each unit type, unit sizes and details might be slightly different. Please refer to the sales and purchase agreement for the actual size of each specific unit.

1BHK / TYPE 03

Second Floor	202-209
Sixth Floor	602,605,608,611
Tenth Floor	1002,1005,1008,1011
Fourteenth Floor	1402,1405,1408,1411
Eighteenth Floor	1802,1805,1808,1811
Twenty-Second Floor	2202,2205,2208,2211

INTERNAL LIVING AREA

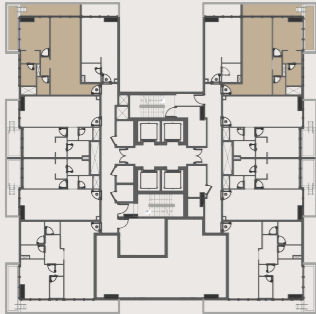
650.14ft²

OUTDOOR LIVING AREA

210.87ft²

TOTAL LIVING AREA

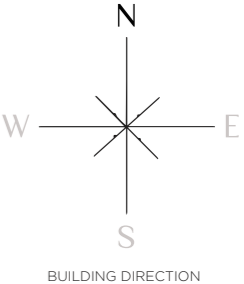
861.01ft²



Second Floor



Sixth Floor Tenth Floor Fourteenth Floor
Eighteenth Floor Twenty-Second Floor



Disclaimer: 1. All room dimensions are measured to structural elements and exclude wall finishes and construction tolerances. 2. All dimensions have been provided by our consultant architects. 3. All materials, dimensions and drawings are approximate. Information is subject to change without notice. 4. Actual suite area may vary from the stated area. Drawings not to scale. The developer reserves the right to make revisions. 5. Calculation of suite area is measured as the area bounded by the centre line of demising or partition walls separating one unit from another unit, the exterior face of all exterior walls, and the exterior face of the corridor wall enclosing the adjoining unit. 6. Calculation of balcony area is measured as the area bounded by the centre line of demising or partition walls separating one unit from another unit, the outmost face of the enclosing guard and the external face of the adjoining balcony. 7. The units are measured at typical floor in the building. Columns may vary in size depending on the floor level. 8. For each unit type, unit sizes and details might be slightly different. Please refer to the sales and purchase agreement for the actual size of each specific unit.

1BHK / TYPE 04

Third Floor	301,304,305,308
Seventh Floor	701,704,705,708
Eleventh Floor	1101,1104,1105,1108
Fifteenth Floor	1501,1504,1505,1508
Nineteenth Floor	1901,1904,1905,1908
Twenty-Third Floor	2301,2304,2305,2308

INTERNAL LIVING AREA

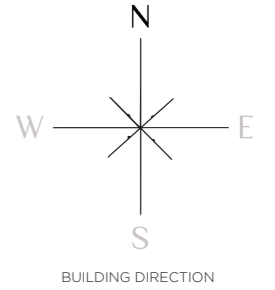
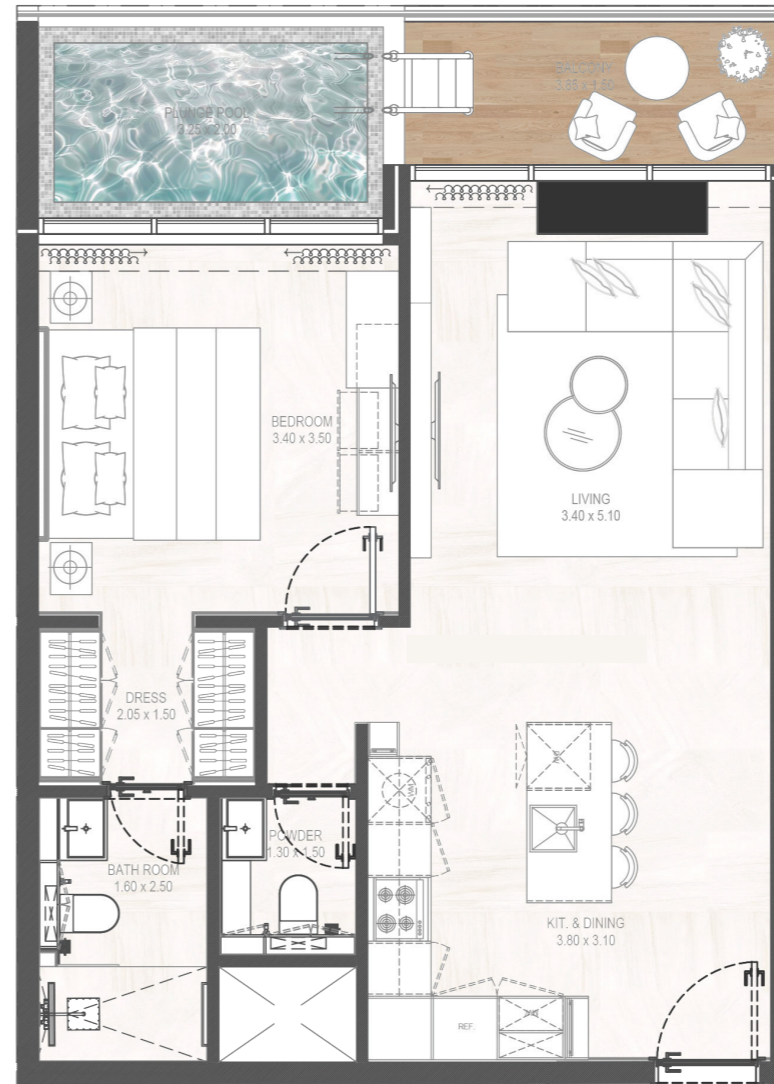
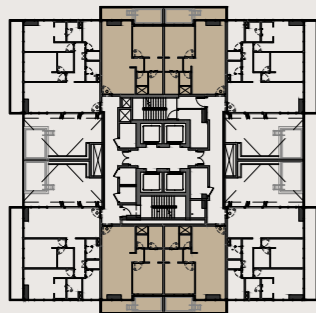
613.76ft²

OUTDOOR LIVING AREA

134.23ft²

TOTAL LIVING AREA

747.98ft²



Disclaimer: 1. All room dimensions are measured to structural elements and exclude wall finishes and construction tolerances. 2. All dimensions have been provided by our consultant architects. 3. All materials, dimensions and drawings are approximate. Information is subject to change without notice. 4. Actual suite area may vary from the stated area. Drawings not to scale. The developer reserves the right to make revisions. 5. Calculation of suite area is measured as the area bounded by the centre line of demising or partition walls separating one unit from another unit, the exterior face of all exterior walls, and the exterior face of the corridor wall enclosing the adjoining unit. 6. Calculation of balcony area is measured as the area bounded by the centre line of demising or partition walls separating one unit from another unit, the outmost face of the enclosing guard and the external face of the adjoining balcony. 7. The units are measured at typical floor in the building. Columns may vary in size depending on the floor level. 8. For each unit type, unit sizes and details might be slightly different. Please refer to the sales and purchase agreement for the actual size of each specific unit.

1BHK / TYPE 05

Fourth Floor	401,406,407,412
Eighth Floor	801,806,807,812
Twelfth Floor	1201,1206,1207,1212
Sixteenth Floor	1601,1606,1607,1612
Twentieth Floor	2001,2006,2007,2012
Twenty-Fourth Floor	2401,2406,2407,2412

INTERNAL LIVING AREA

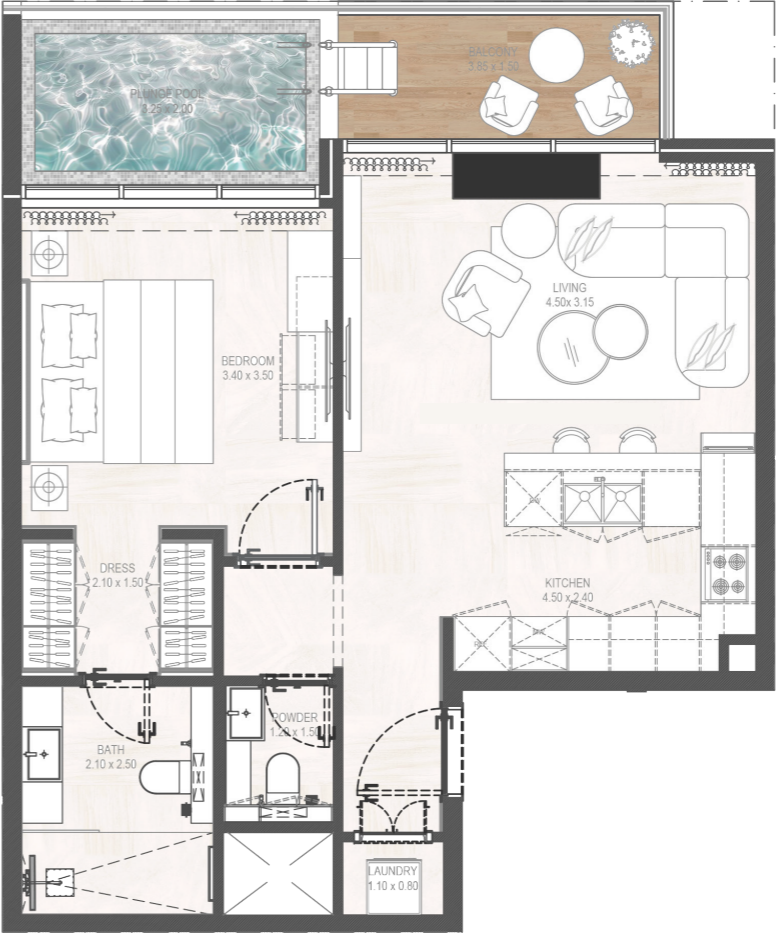
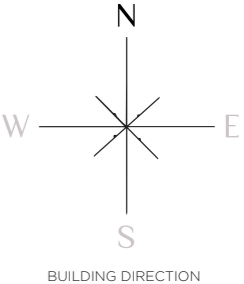
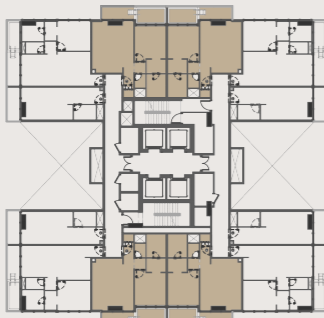
604.39ft²

OUTDOOR LIVING AREA

134.01ft²

TOTAL LIVING AREA

738.40ft²



Disclaimer: 1. All room dimensions are measured to structural elements and exclude wall finishes and construction tolerances. 2. All dimensions have been provided by our consultant architects. 3. All materials, dimensions and drawings are approximate. Information is subject to change without notice. 4. Actual suite area may vary from the stated area. Drawings not to scale. The developer reserves the right to make revisions. 5. Calculation of suite area is measured as the area bounded by the centre line of demising or partition walls separating one unit from another unit, the exterior face of all exterior walls, and the exterior face of the corridor wall enclosing the adjoining unit. 6. Calculation of balcony area is measured as the area bounded by the centre line of demising or partition walls separating one unit from another unit, the outmost face of the enclosing guard and the external face of the adjoining balcony. 7. The units are measured at typical floor in the building. Columns may vary in size depending on the floor level. 8. For each unit type, unit sizes and details might be slightly different. Please refer to the sales and purchase agreement for the actual size of each specific unit.

1BHK / TYPE 06

Fourth Floor	402,405,408,411
Eighth Floor	802,805,808,811
Twelfth Floor	1202,1205,1208,1211
Sixteenth Floor	1602,1605,1608,1611
Twentieth Floor	2002,2005,2008,2011
Twenty-Fourth Floor	2402,2405,2408,2411

INTERNAL LIVING AREA

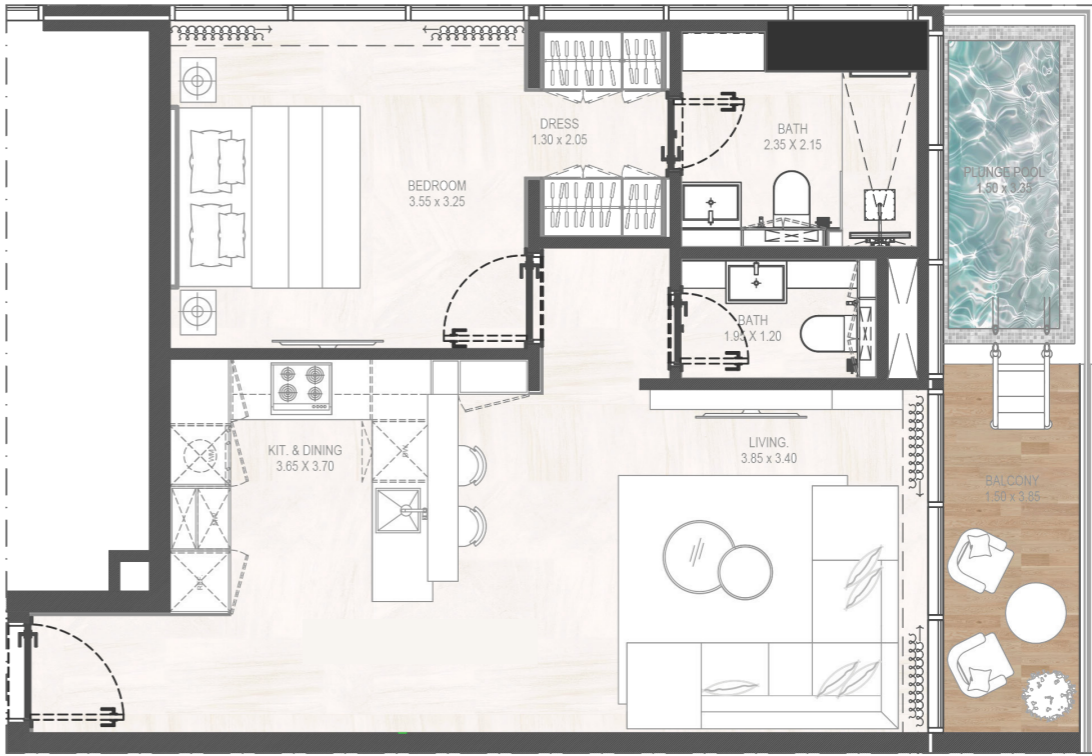
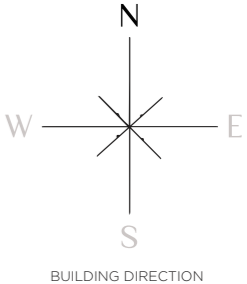
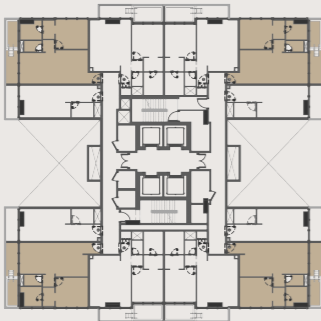
593.41ft²

OUTDOOR LIVING AREA

123.46ft²

TOTAL LIVING AREA

716.88ft²



Disclaimer: 1. All room dimensions are measured to structural elements and exclude wall finishes and construction tolerances. 2. All dimensions have been provided by our consultant architects. 3. All materials, dimensions and drawings are approximate. Information is subject to change without notice. 4. Actual suite area may vary from the stated area. Drawings not to scale. The developer reserves the right to make revisions. 5. Calculation of suite area is measured as the area bounded by the centre line of demising or partition walls separating one unit from another unit, the exterior face of all exterior walls, and the exterior face of the corridor wall enclosing the adjoining unit. 6. Calculation of balcony area is measured as the area bounded by the centre line of demising or partition walls separating one unit from another unit, the outmost face of the enclosing guard and the external face of the adjoining balcony. 7. The units are measured at typical floor in the building. Columns may vary in size depending on the floor level. 8. For each unit type, unit sizes and details might be slightly different. Please refer to the sales and purchase agreement for the actual size of each specific unit.

2BHK / TYPE 01

Fifth Floor	501,504,505,508
Nineth Floor	901,904,905,908
Thirteenth Floor	1301,1304,1305,1308
Seventeenth Floor	1701,1704,1705,1708
Twenty-first Floor	2101,2104,2105,2108

INTERNAL LIVING AREA

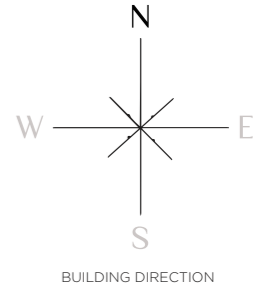
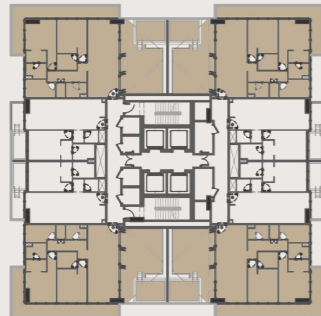
988.99ft²

OUTDOOR LIVING AREA

748.74ft²

TOTAL LIVING AREA

1737.73ft²



Disclaimer: 1. All room dimensions are measured to structural elements and exclude wall finishes and construction tolerances. 2. All dimensions have been provided by our consultant architects. 3. All materials, dimensions and drawings are approximate. Information is subject to change without notice. 4. Actual suite area may vary from the stated area. Drawings not to scale. The developer reserves the right to make revisions. 5. Calculation of suite area is measured as the area bounded by the centre line of demising or partition walls separating one unit from another unit, the exterior face of all exterior walls, and the exterior face of the corridor wall enclosing the adjoining unit. 6. Calculation of balcony area is measured as the area bounded by the centre line of demising or partition walls separating one unit from another unit, the outmost face of the enclosing guard and the external face of the adjoining balcony. 7. The units are measured at typical floor in the building. Columns may vary in size depending on the floor level. 8. For each unit type, unit sizes and details might be slightly different. Please refer to the sales and purchase agreement for the actual size of each specific unit.

2BHK / TYPE 02

Third Floor	302,303,306,307
Seventh Floor	702,703,706,707
Eleventh Floor	1102,1103,1106,1107
Fifteenth Floor	1502,1503,1506,1507
Nineteenth Floor	1902,1903,1906,1907
Twenty-Third Floor	2302,2303,2306,2307

INTERNAL LIVING AREA

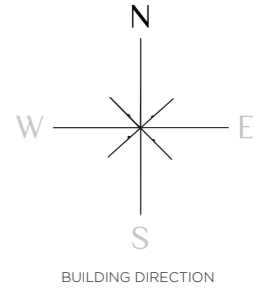
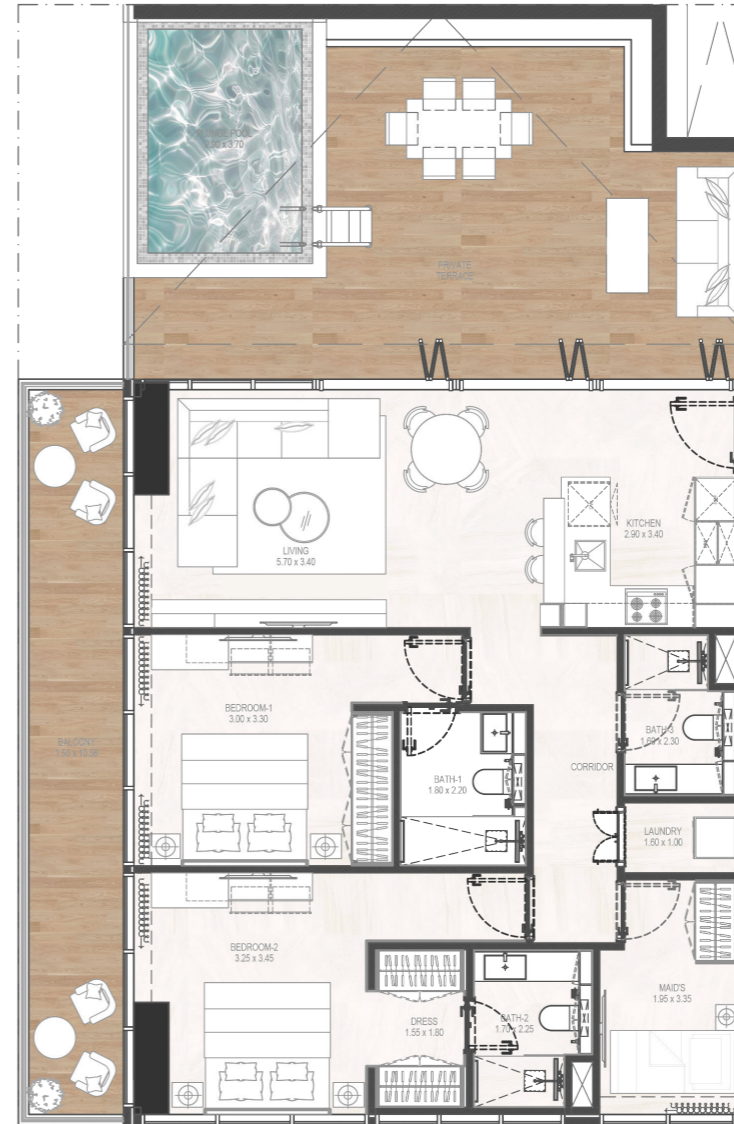
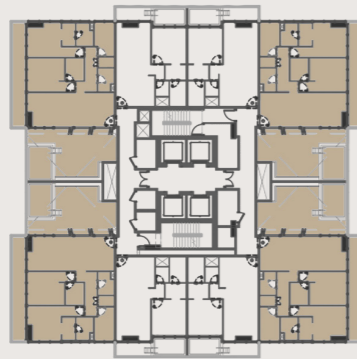
955.73ft²

OUTDOOR LIVING AREA

666.82ft²

TOTAL LIVING AREA

1622.55ft²



Disclaimer: 1. All room dimensions are measured to structural elements and exclude wall finishes and construction tolerances. 2. All dimensions have been provided by our consultant architects. 3. All materials, dimensions and drawings are approximate. Information is subject to change without notice. 4. Actual suite area may vary from the stated area. Drawings not to scale. The developer reserves the right to make revisions. 5. Calculation of suite area is measured as the area bounded by the centre line of demising or partition walls separating one unit from another unit, the exterior face of all exterior walls, and the exterior face of the corridor wall enclosing the adjoining unit. 6. Calculation of balcony area is measured as the area bounded by the centre line of demising or partition walls separating one unit from another unit, the outmost face of the enclosing guard and the external face of the adjoining balcony. 7. The units are measured at typical floor in the building. Columns may vary in size depending on the floor level. 8. For each unit type, unit sizes and details might be slightly different. Please refer to the sales and purchase agreement for the actual size of each specific unit.

PENTHOUSE

Twenty-Fifth Floor | 2501-2502-2503-2504

INTERNAL LIVING AREA

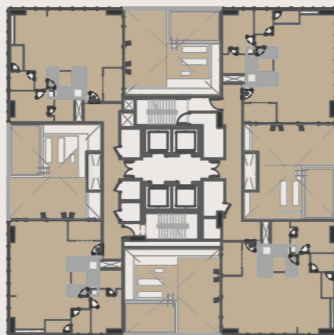
2263.54ft²

OUTDOOR LIVING AREA

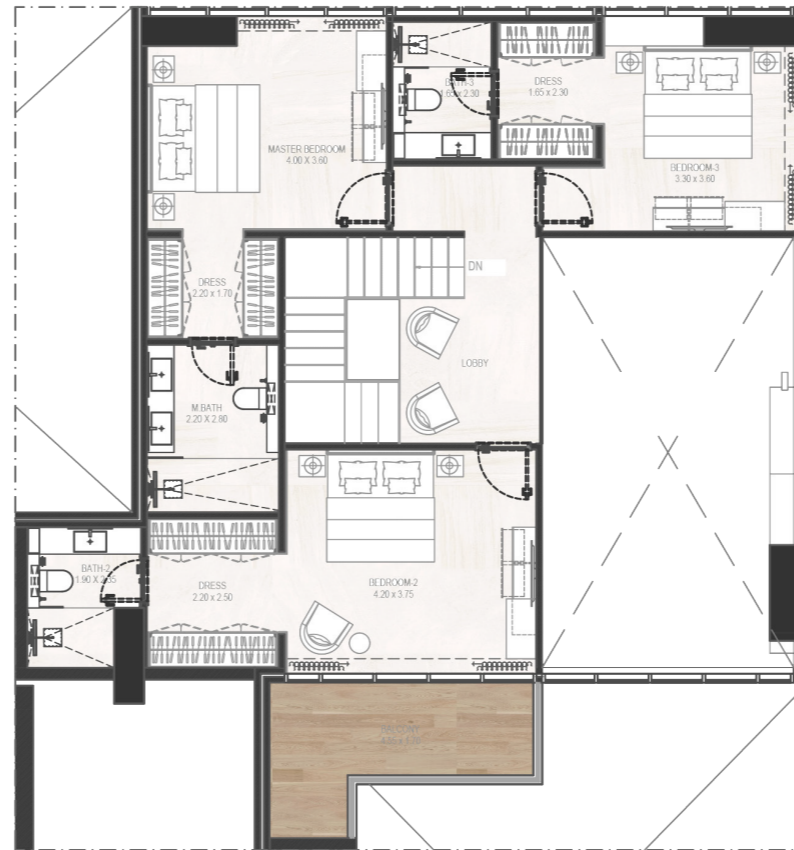
943.56ft²

TOTAL LIVING AREA

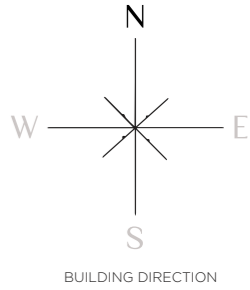
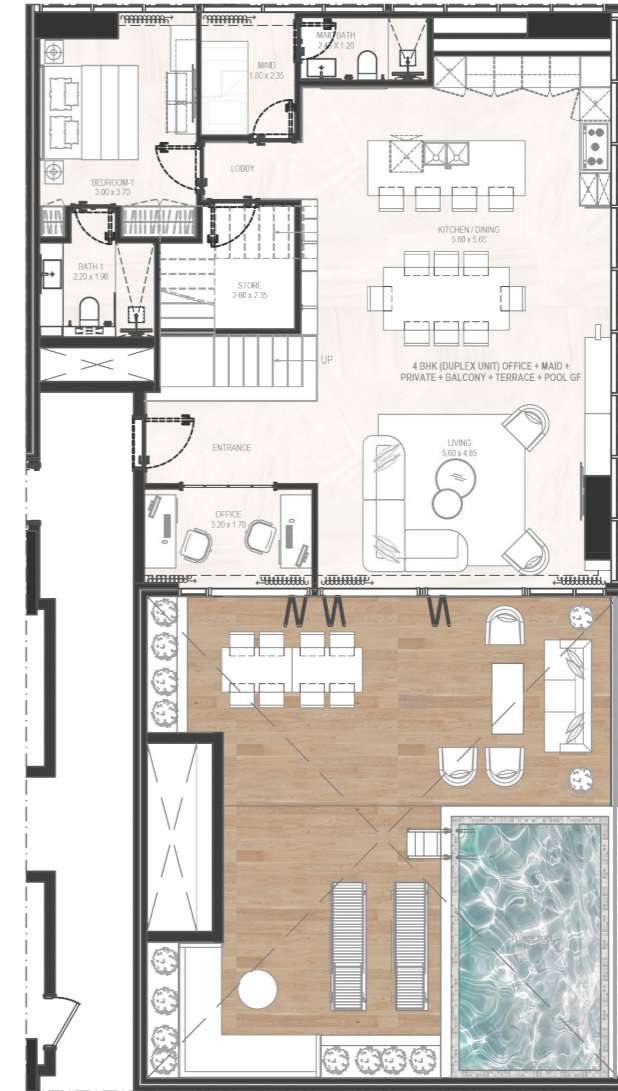
3207.11ft²



Roof Penthouse



Base Penthouse



Disclaimer: 1. All room dimensions are measured to structural elements and exclude wall finishes and construction tolerances. 2. All dimensions have been provided by our consultant architects. 3. All materials, dimensions and drawings are approximate. Information is subject to change without notice. 4. Actual suite area may vary from the stated area. Drawings not to scale. The developer reserves the right to make revisions. 5. Calculation of suite area is measured as the area bounded by the centre line of demising or partition walls separating one unit from another unit, the exterior face of all exterior walls, and the exterior face of the corridor wall enclosing the adjoining unit. 6. Calculation of balcony area is measured as the area bounded by the centre line of demising or partition walls separating one unit from another unit, the outmost face of the enclosing guard and the external face of the adjoining balcony. 7. The units are measured at typical floor in the building. Columns may vary in size depending on the floor level. 8. For each unit type, unit sizes and details might be slightly different. Please refer to the sales and purchase agreement for the actual size of each specific unit.



About RABDAN

At Rabdan Developments, we go beyond building homes — we create masterpieces that redefine luxury living. GHARBI II Residences stands as a testament to our commitment to innovation, elegance, and precision. Our vision is to deliver spaces that combine sophisticated design with unmatched comfort, ensuring every resident experiences a lifestyle of modern convenience and timeless luxury. Nestled in one of Dubai's most sought-after locations, GHARBI II is more than just a residence — it's a statement of excellence and a reflection of Dubai's dynamic growth. With meticulously crafted interiors, world-class amenities, and seamless access to the city's key landmarks, GHARBI II invites you to be part of something truly exceptional. We take pride in building dream homes that inspire, elevate, and endure. Thank you for choosing Rabdan Developments to bring your aspirations to life.



 800RBDN

www.rabdanddevelopments.ae