



ALTA VIEW

SKYHOMES

# Object 1

Dubai is a Gallery,  
and Buildings are Showpieces



# ALTA V1EW

SKYHOMES



District 10, Jumeirah Village Circle

**Building Description:**

B+G+5P+2MF+46+R

**Anticipated Handover:** Q4 2028

**Anticipated Service Charge:** AED 15/Sq.Ft.

ALTA V1EW Skyhomes redefines elevated living — a striking residential tower that rises above the city, offering a new perspective on beauty, freedom, and intentional living. Designed for those who seek more than comfort and prestige, ALTA V1EW Skyhomes is a philosophy — a lifestyle inspired by light, space, and nature.



ALTA VIEW

SKYHOMES

# Floor Plans



Object 1



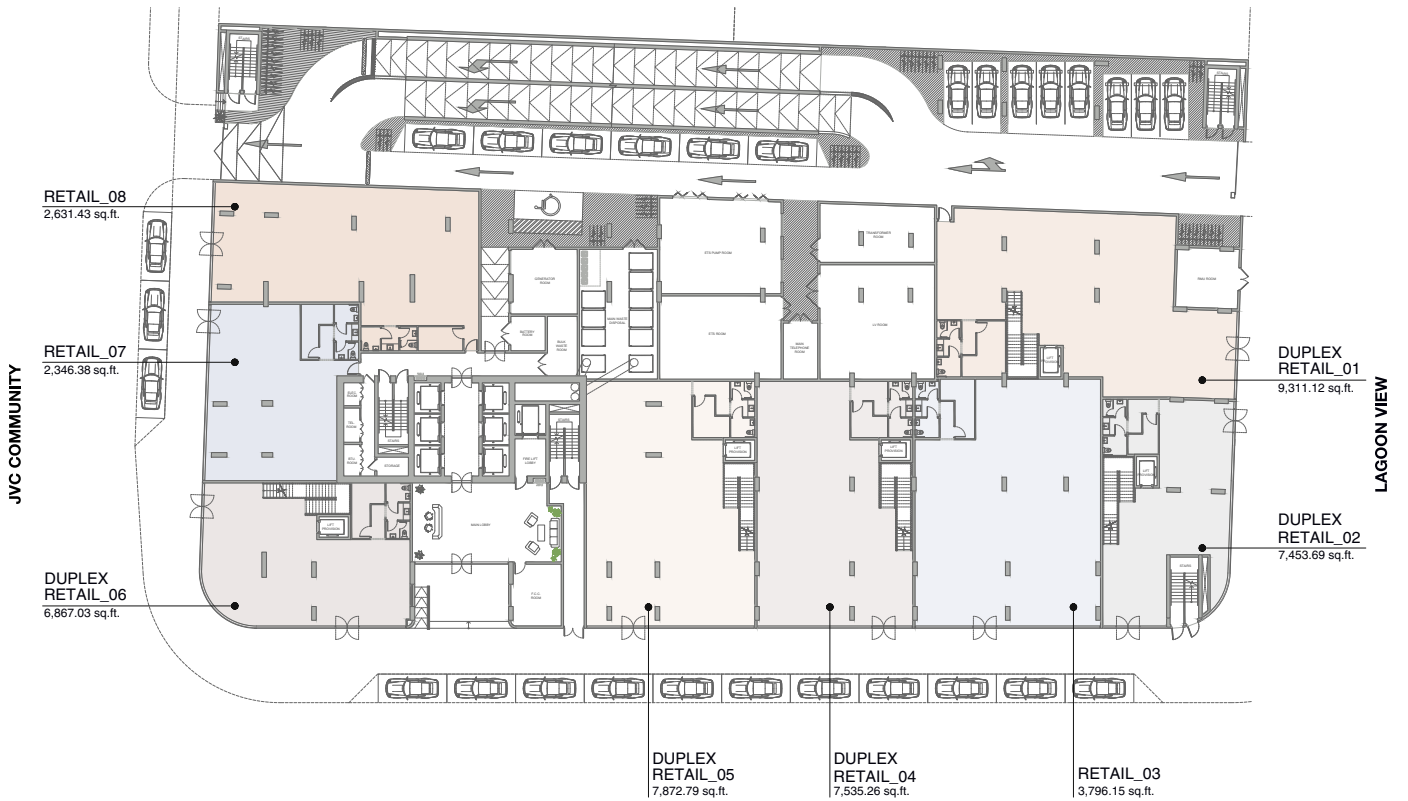
# ALTA VIEW

SKYHOMES

## GROUND FLOOR

FLOOR: G

JVC COMMUNITY



PALM JUMEIRAH, EMIRATES HILLS, AL KHAIL RD.





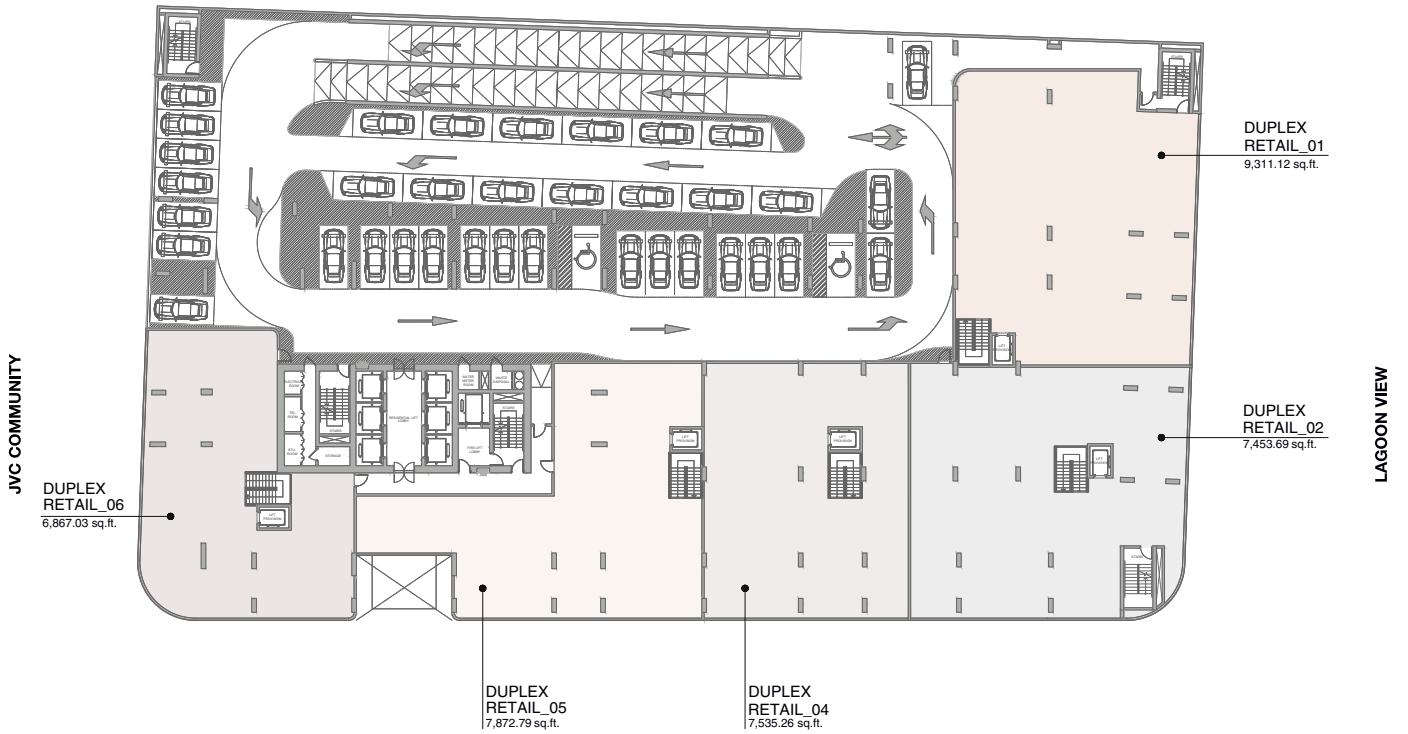
# ALTA VIEW

SKYHOMES

## PODIUM 1

FLOOR: P1

JVC COMMUNITY



PALM JUMEIRAH, EMIRATES HILLS, AL KHAIL RD.





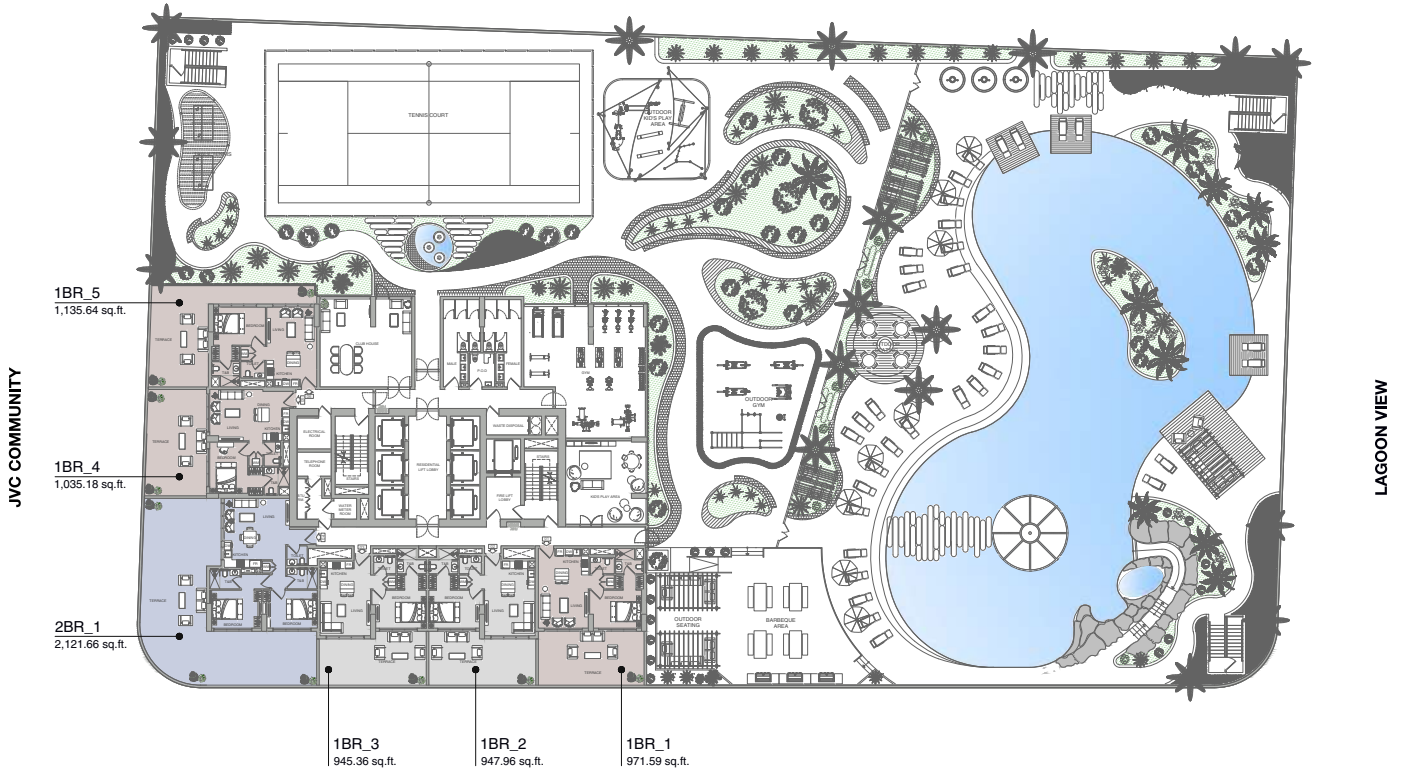
# ALTA V1EW

SKYHOMES

## TYPICAL FLOOR

FLOOR: 1

### JVC COMMUNITY



PALM JUMEIRAH, EMIRATES HILLS, AL KHAIL RD.

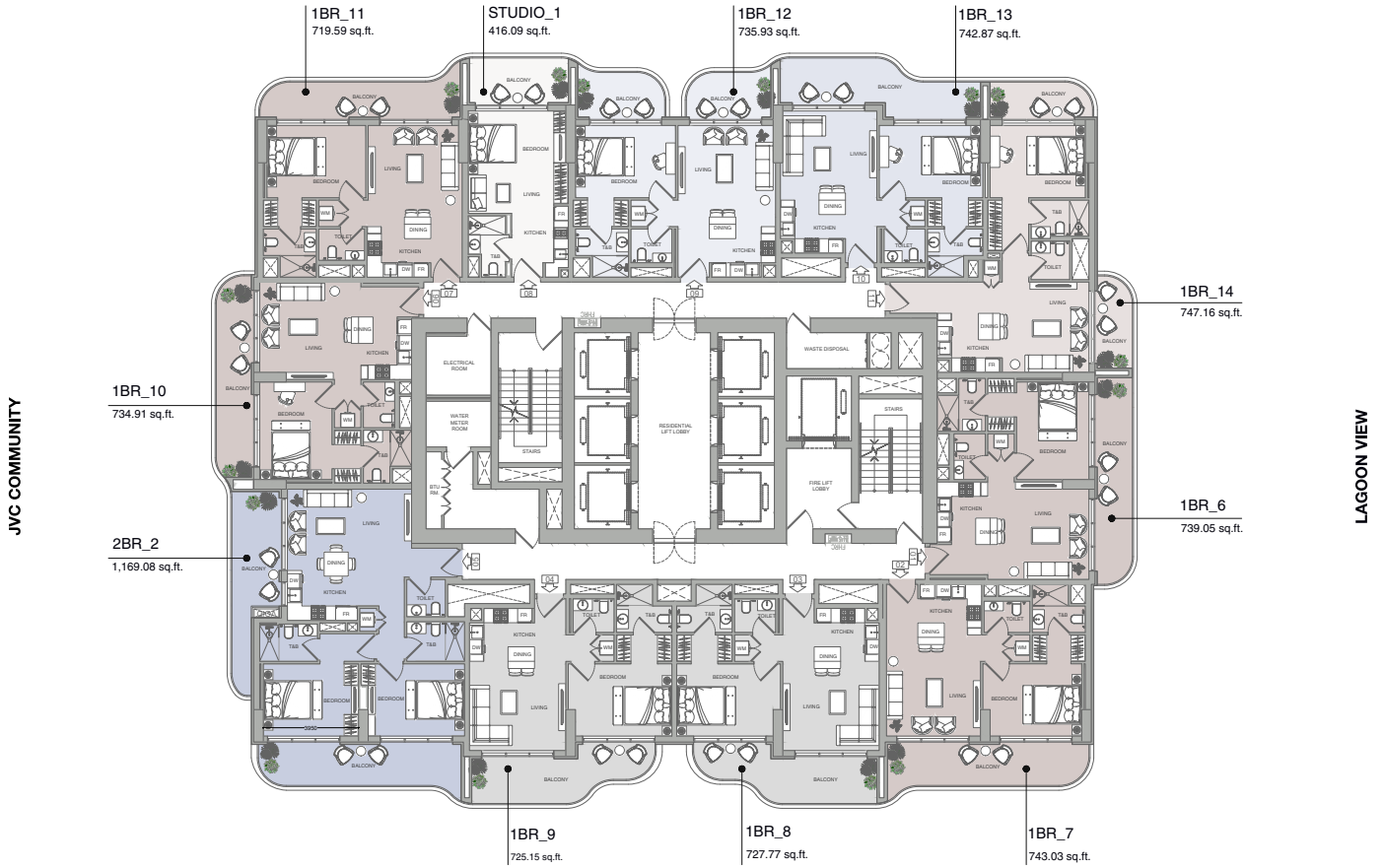




# TYPICAL FLOOR

FLOOR : 3,5,6,8,10,11,13,15,16,18,20,21,23,24,26,28,29,31,32,36,37,39,41,43,45,47,48

## JVC COMMUNITY



PALM JUMEIRAH, EMIRATES HILLS, AL KHAIL RD.





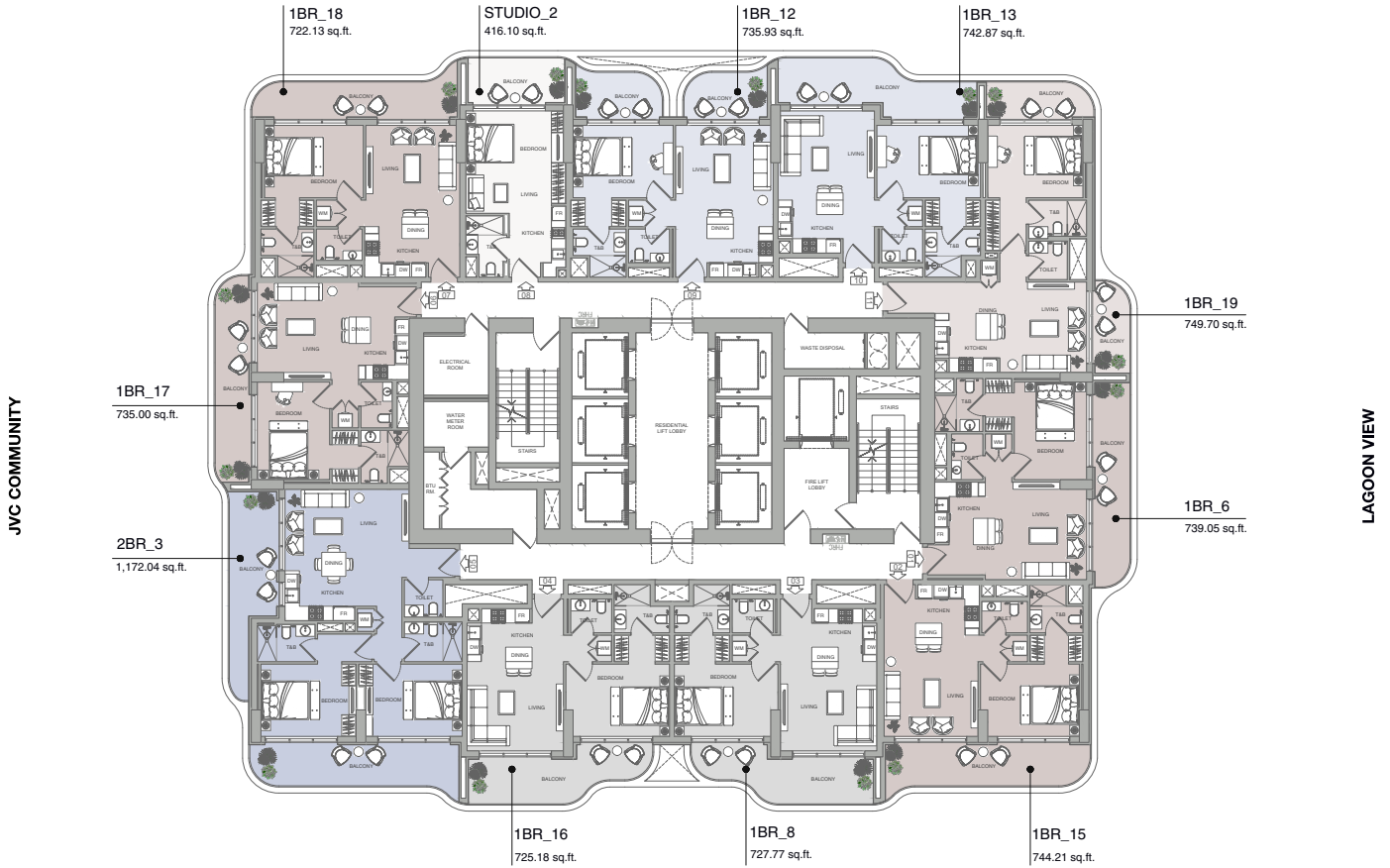
ALTA V1EW

SKYHOMES

# TYPICAL FLOOR

FLOOR: 2,4,7,9,12,14,19,22,25,27,30,38,40,42,44,46

## JVC COMMUNITY



PALM JUMEIRAH, EMIRATES HILLS, AL KHAIL RD.



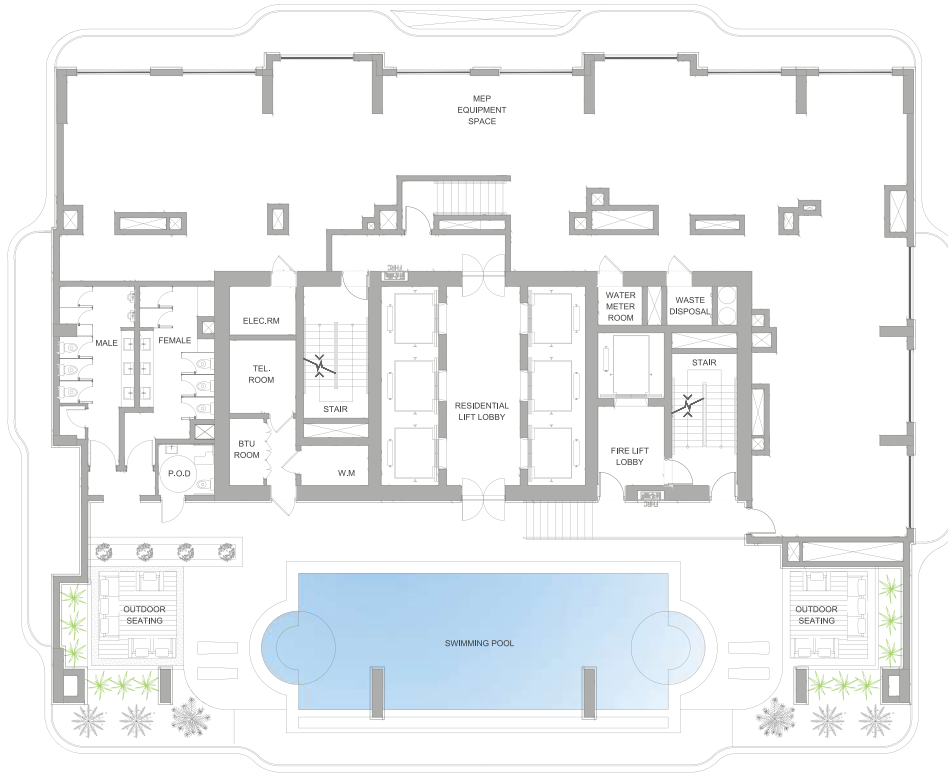


TYPICAL FLOOR

MECHANICAL FLOOR : 2, 33

JVC COMMUNITY

JVC COMMUNITY



LAGOON VIEW

PALM JUMEIRAH, EMIRATES HILLS, AL KHAIL RD.





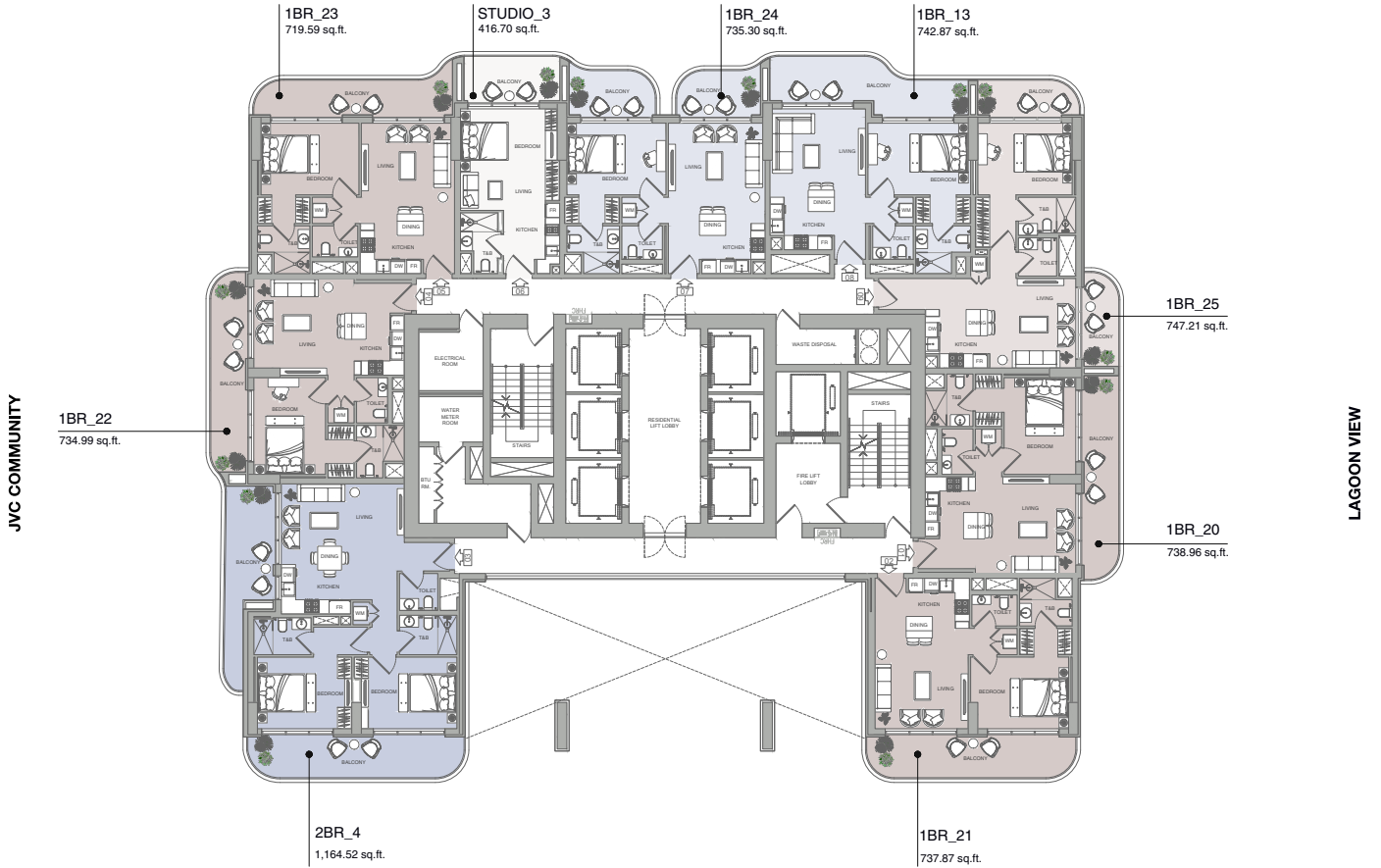
ALTA V1EW

SKYHOMES

# TYPICAL FLOOR

FLOOR: 34

## JVC COMMUNITY



PALM JUMEIRAH, EMIRATES HILLS, AL KHAIL RD.





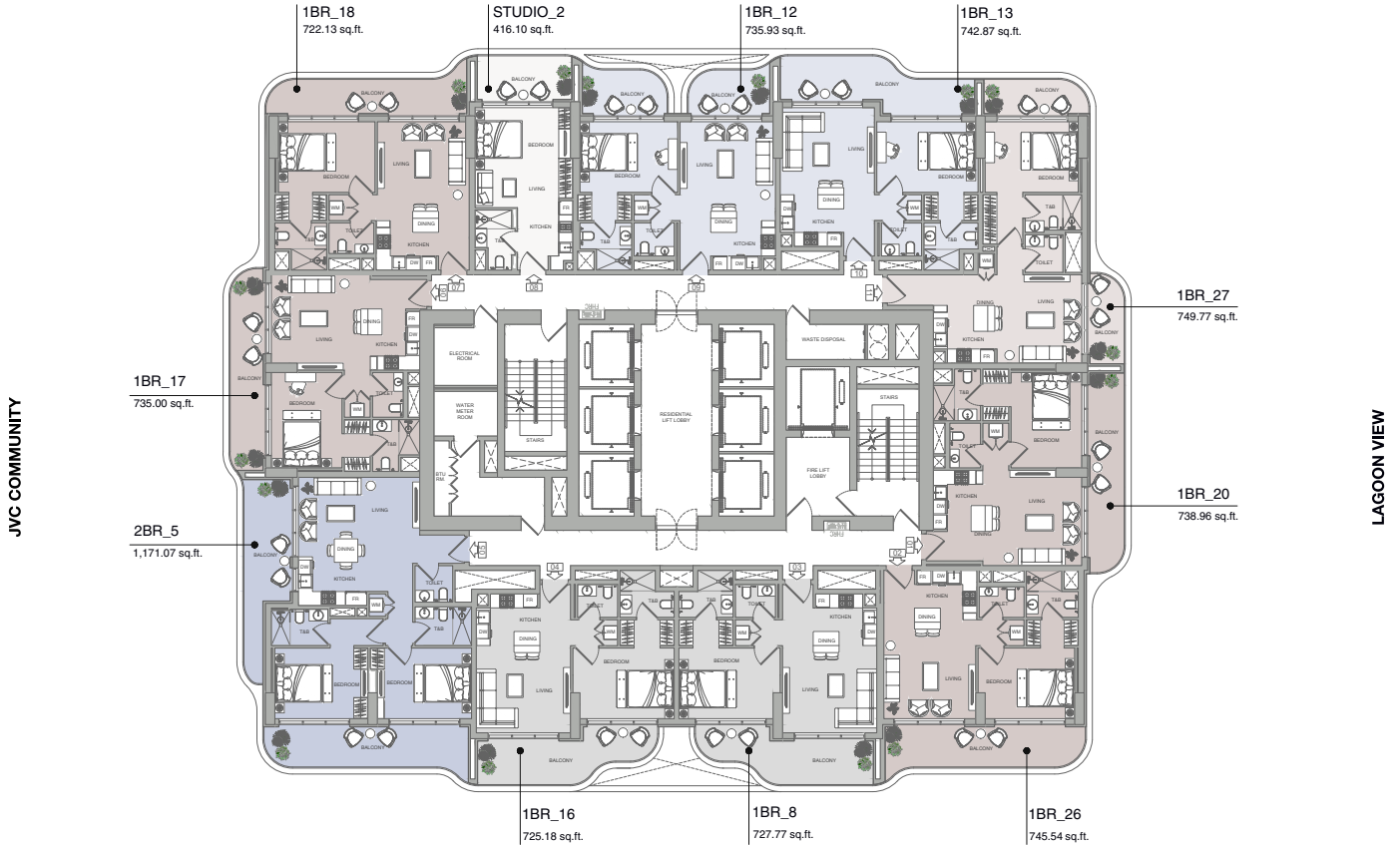
ALTA V1EW

SKYHOMES

# TYPICAL FLOOR

FLOOR: 35

## JVC COMMUNITY



PALM JUMEIRAH, EMIRATES HILLS, AL KHAIL RD.



Disclaimer : all pictures, plans, layouts, information, data and details included in this brochure are indicative only may change at any time up to the final "as built" status in accordance with the final designs of the project, regulatory approvals and planning permissions



**Object 1**