

Hillsedge

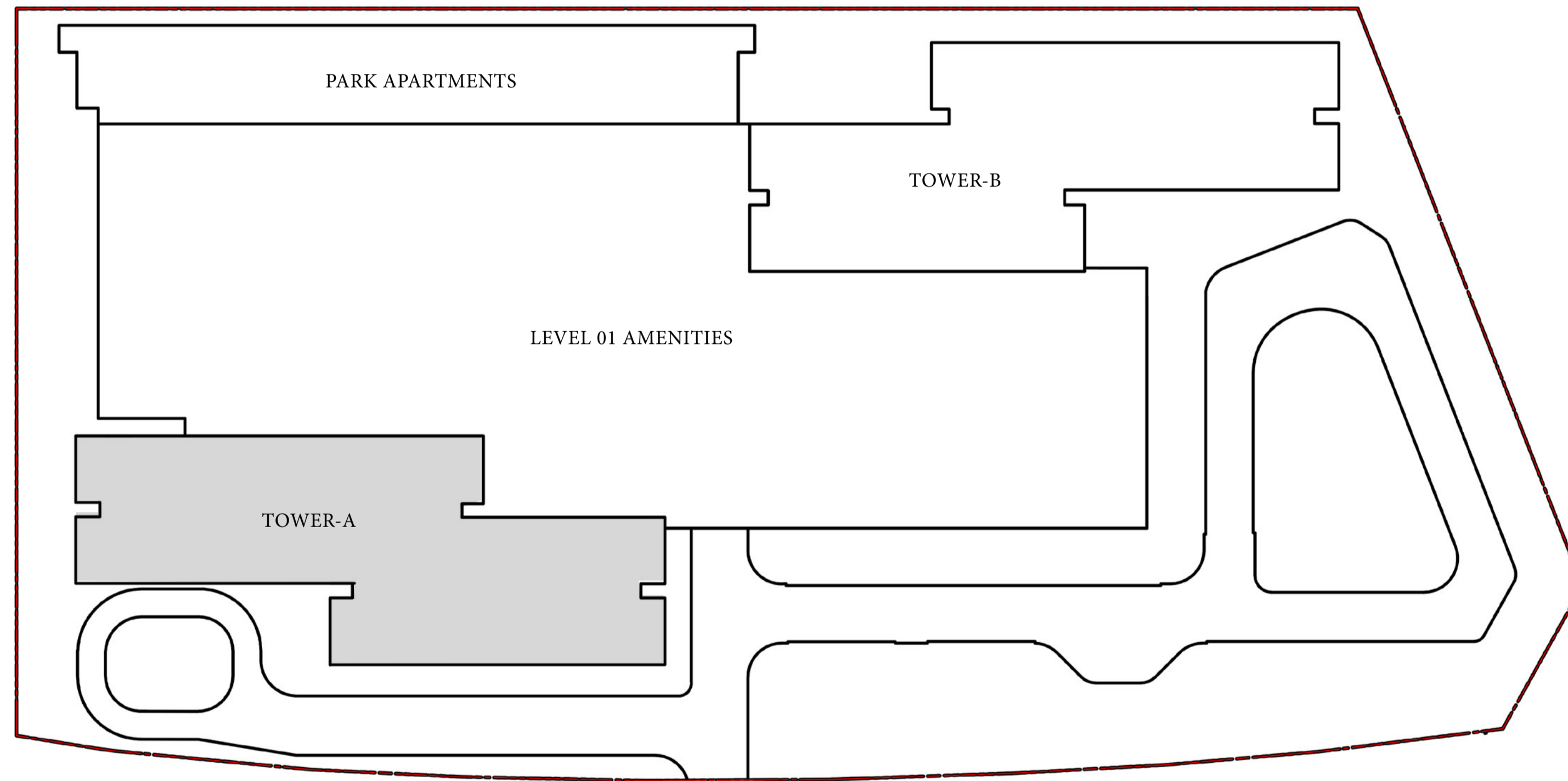
DUBAI HILLS ESTATE

FLOOR PLANS | TOWER A

EMAAR

MASTER PLAN

TOWER A



Hillsedge

DUBAI HILLS ESTATE

TOWER A

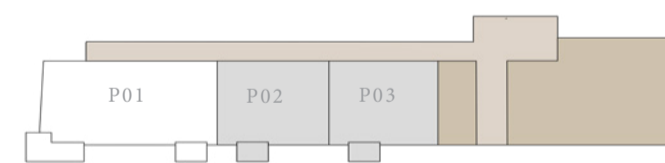
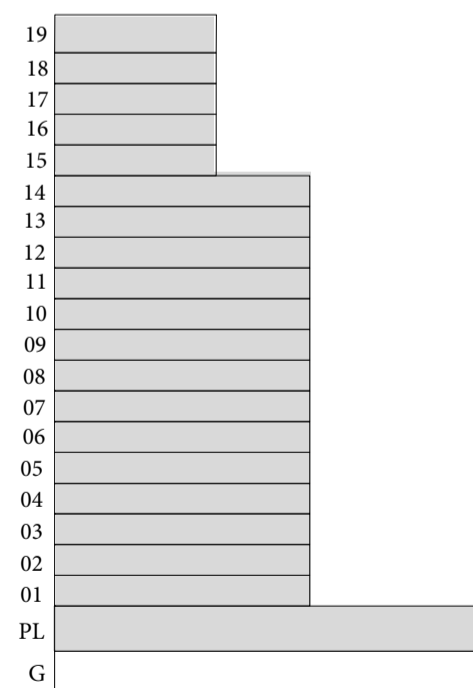
1 BEDROOM TYPE A

UNITS P02, P03, 101, 102, 106, 202, 203, 206, 207, 209, 212, 302, 303, 306, 307, 309, 312, 402, 403, 406, 407, 409, 412, 502, 503, 506, 507, 509, 512, 602, 603, 606, 607, 609, 612, 702, 703, 706, 707, 709, 712, 802, 803, 806, 807, 809, 812, 902, 903, 906, 907, 909, 912, 1002, 1003, 1006, 1007, 1009, 1012, 1102, 1103, 1106, 1107, 1109, 1112, 1202, 1203, 1206, 1207, 1209, 1212, 1302, 1303, 1306, 1307, 1309, 1312, 1402, 1403, 1406, 1407, 1502, 1503, 1506, 1507, 1602, 1603, 1606, 1607, 1702, 1703, 1706, 1707, 1802, 1803, 1806, 1807, 1902, 1903, 1906, 1907

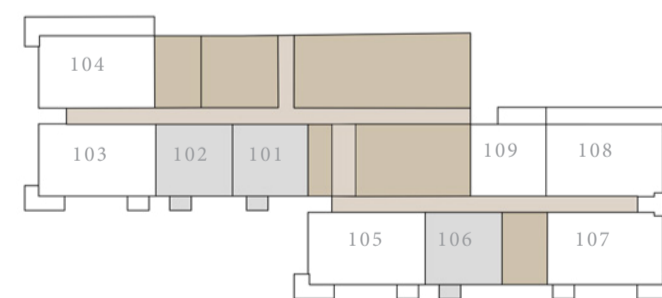
SUITE AREA	673.07 SQ.FT	62.53 SQ.M
BALCONY AREA	35.31 SQ.FT	3.28 SQ.M
TOTAL AREA	708.38 SQ.FT	65.81 SQ.M

KEY SECTION

KEYPLAN



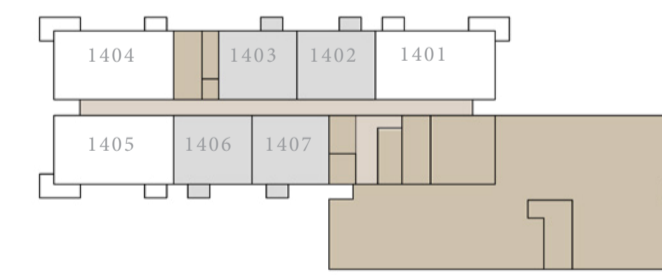
PODIUM LEVEL



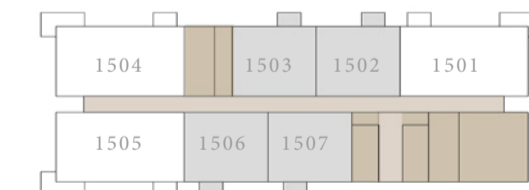
LEVEL 1



LEVEL 2-13



LEVEL 14



LEVEL 15-19



FLOOR PLAN 1. All dimensions are in imperial and metric, and measured from finish to finish excluding construction tolerances. 2. All materials, dimensions, and drawings are approximate only. 3. Information is subject to change without notice, at developer's absolute discretion. 4. Actual area may vary from the stated area. 5. Drawings not to scale. 6. All images used are for illustrative purposes only and do not represent the actual size, features, specifications, fittings, and furnishings. 7. The developer reserves the right to make revisions / alterations, at its absolute discretion, without any liability whatsoever.

Hillsedge

DUBAI HILLS ESTATE

TOWER A

1 BEDROOM TYPE A.2

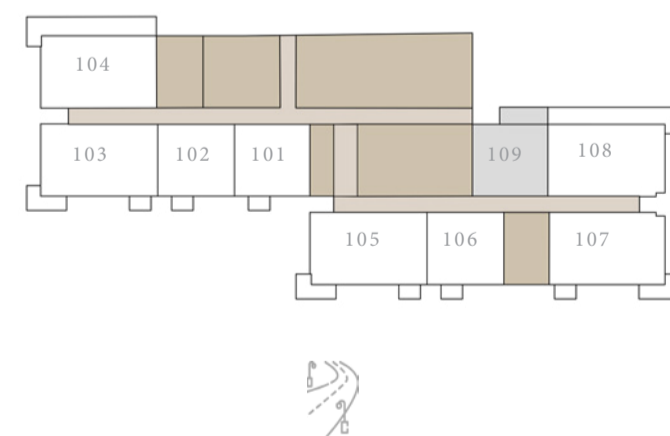
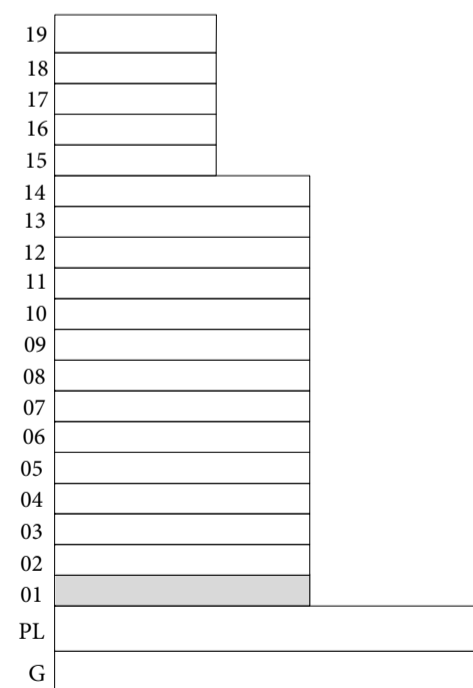
UNIT 109

SUITE AREA	674.25 SQ.FT	62.64 SQ.M
BALCONY AREA	104.73 SQ.FT	9.73 SQ.M
TOTAL AREA	778.98 SQ.FT	72.37 SQ.M



KEY SECTION

KEYPLAN



LEVEL 1

FLOOR PLAN 1. All dimensions are in imperial and metric, and measured from finish to finish excluding construction tolerances. 2. All materials, dimensions, and drawings are approximate only. 3. Information is subject to change without notice, at developer's absolute discretion. 4. Actual area may vary from the stated area. 5. Drawings not to scale. 6. All images used are for illustrative purposes only and do not represent the actual size, features, specifications, fittings, and furnishings. 7. The developer reserves the right to make revisions / alterations, at its absolute discretion, without any liability whatsoever.

Hillsedge

DUBAI HILLS ESTATE

TOWER A

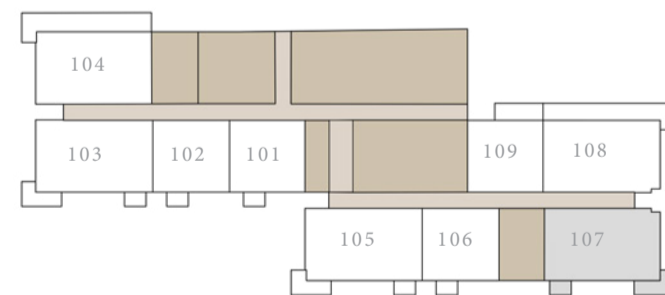
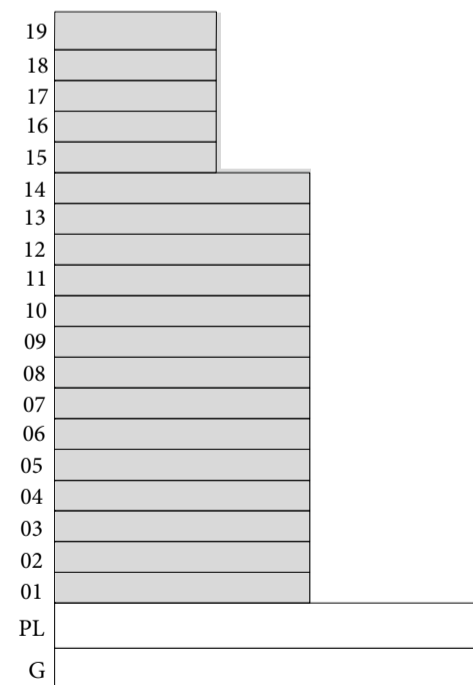
2 BEDROOM TYPE A

UNITS 107, 204, 210, 304, 310, 404, 410, 504, 510, 604, 610, 704, 710, 804, 810, 904, 910, 1004, 1010, 1104, 1110, 1204, 1210, 1304, 1310, 1404, 1504, 1604, 1704, 1804, 1904

SUITE AREA	1019.13 SQ.FT	94.68 SQ.M
BALCONY AREA	119.91 SQ.FT	11.14 SQ.M
TOTAL AREA	1139.04 SQ.FT	105.82 SQ.M

KEY SECTION

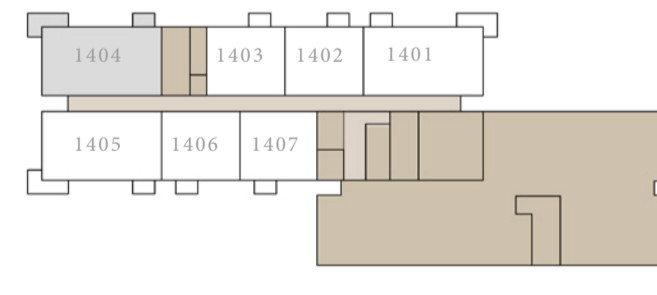
KEYPLAN



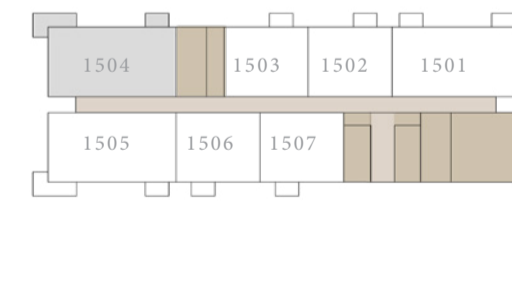
LEVEL 1



LEVEL 2-13



LEVEL 14



LEVEL 15-19



FLOOR PLAN 1. All dimensions are in imperial and metric, and measured from finish to finish excluding construction tolerances. 2. All materials, dimensions, and drawings are approximate only. 3. Information is subject to change without notice, at developer's absolute discretion. 4. Actual area may vary from the stated area. 5. Drawings not to scale. 6. All images used are for illustrative purposes only and do not represent the actual size, features, specifications, fittings, and furnishings. 7. The developer reserves the right to make revisions / alterations, at its absolute discretion, without any liability whatsoever.

Hillsedge

DUBAI HILLS ESTATE

TOWER A

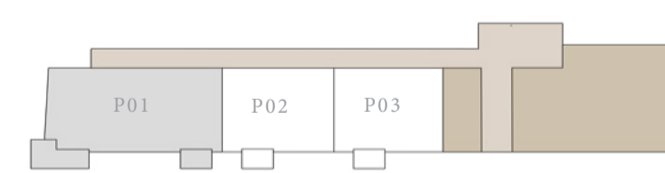
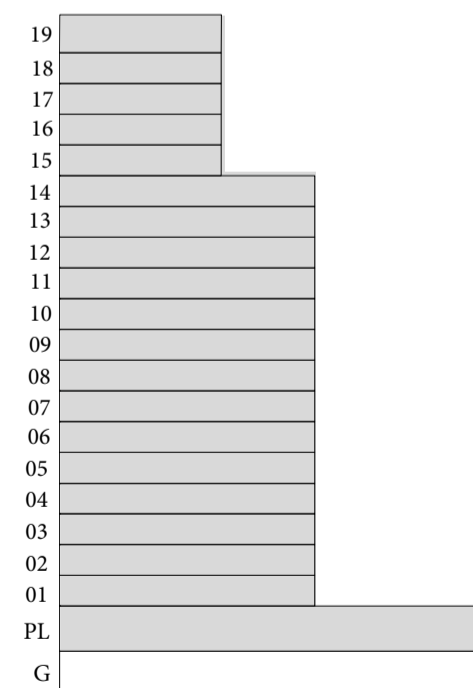
2 BEDROOM TYPE A.1

UNITS P01, 103, 105, 201, 205, 208, 211, 301, 305, 308, 311, 401, 405, 408, 411, 501, 505, 508, 511, 601, 605, 608, 611, 701, 705, 708, 711, 801, 805, 808, 811, 901, 905, 908, 911, 1001, 1005, 1008, 1011, 1101, 1105, 1108, 1111, 1201, 1205, 1208, 1211, 1301, 1305, 1308, 1311, 1401, 1405, 1501, 1505, 1601, 1605, 1701, 1705, 1801, 1805, 1901, 1905

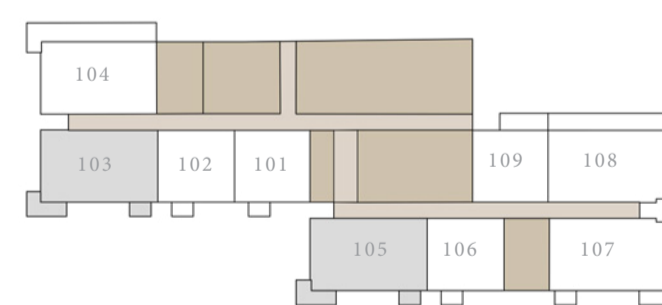
SUITE AREA	1019.13 SQ.FT	94.68 SQ.M
BALCONY AREA	119.91 SQ.FT	11.14 SQ.M
TOTAL AREA	1139.04 SQ.FT	105.82 SQ.M

KEY SECTION

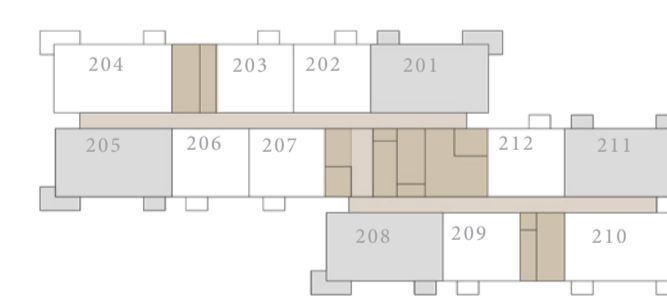
KEYPLAN



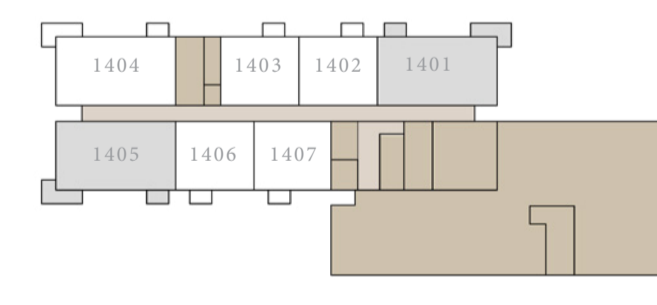
PODIUM LEVEL



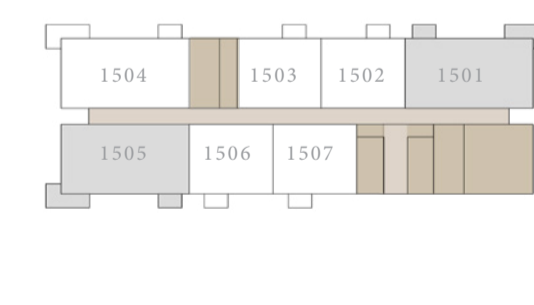
LEVEL 1



LEVEL 2-13



LEVEL 14



LEVEL 15-19



FLOOR PLAN 1. All dimensions are in imperial and metric, and measured from finish to finish excluding construction tolerances. 2. All materials, dimensions, and drawings are approximate only. 3. Information is subject to change without notice, at developer's absolute discretion. 4. Actual area may vary from the stated area. 5. Drawings not to scale. 6. All images used are for illustrative purposes only and do not represent the actual size, features, specifications, fittings, and furnishings. 7. The developer reserves the right to make revisions / alterations, at its absolute discretion, without any liability whatsoever.

Hillsedge

DUBAI HILLS ESTATE

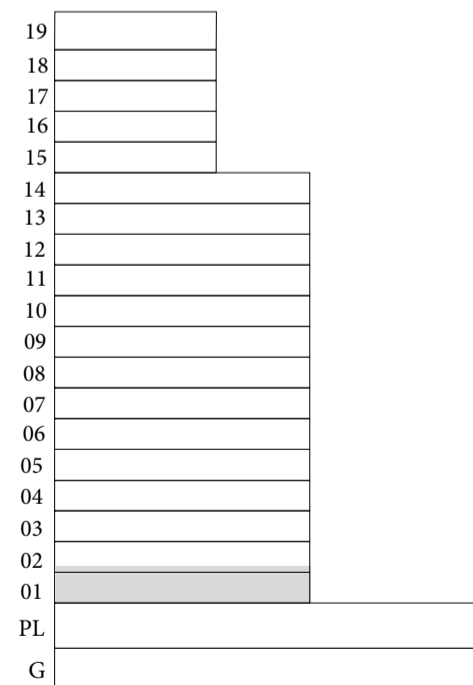
TOWER A

2 BEDROOM TYPE A.2

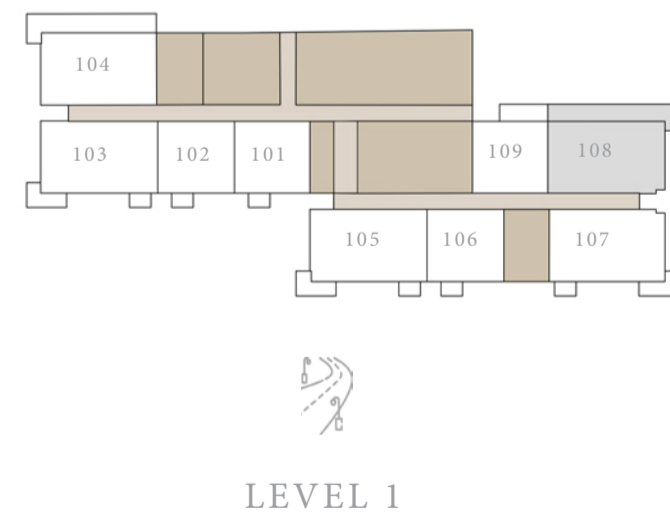
UNIT 108

SUITE AREA	1019.13	SQ.FT	94.68	SQ.M
BALCONY AREA	332.71	SQ.FT	30.91	SQ.M
TOTAL AREA	1351.84	SQ.FT	125.59	SQ.M

KEY SECTION



KEYPLAN



FLOOR PLAN 1. All dimensions are in imperial and metric, and measured from finish to finish excluding construction tolerances. 2. All materials, dimensions, and drawings are approximate only. 3. Information is subject to change without notice, at developer's absolute discretion. 4. Actual area may vary from the stated area. 5. Drawings not to scale. 6. All images used are for illustrative purposes only and do not represent the actual size, features, specifications, fittings, and furnishings. 7. The developer reserves the right to make revisions / alterations, at its absolute discretion, without any liability whatsoever.

Hillsedge

DUBAI HILLS ESTATE

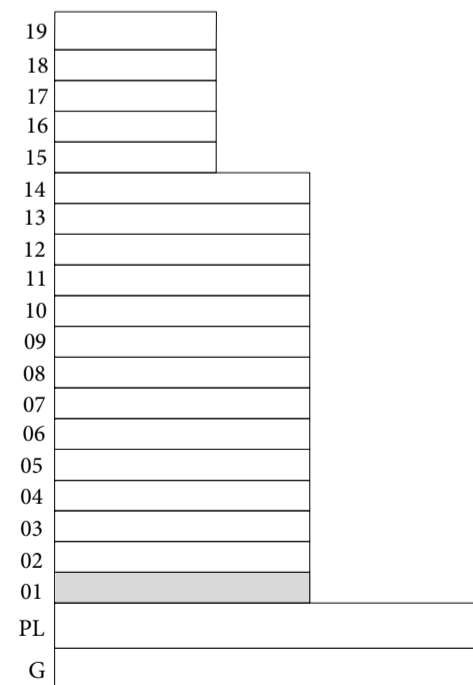
TOWER A

2 BEDROOM TYPE A.3

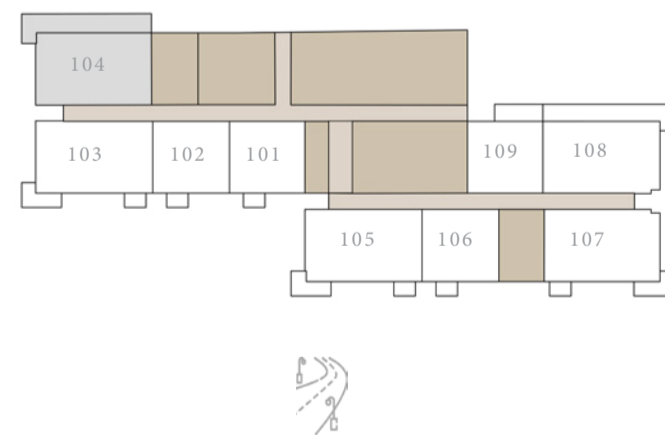
UNIT 104

SUITE AREA	1019.13 SQ.FT	94.68 SQ.M
BALCONY AREA	313.45 SQ.FT	29.12 SQ.M
TOTAL AREA	1332.58 SQ.FT	123.80 SQ.M

KEY SECTION



KEYPLAN



LEVEL 1



FLOOR PLAN 1. All dimensions are in imperial and metric, and measured from finish to finish excluding construction tolerances. 2. All materials, dimensions, and drawings are approximate only. 3. Information is subject to change without notice, at developer's absolute discretion. 4. Actual area may vary from the stated area. 5. Drawings not to scale. 6. All images used are for illustrative purposes only and do not represent the actual size, features, specifications, fittings, and furnishings. 7. The developer reserves the right to make revisions / alterations, at its absolute discretion, without any liability whatsoever.

Hillsedge

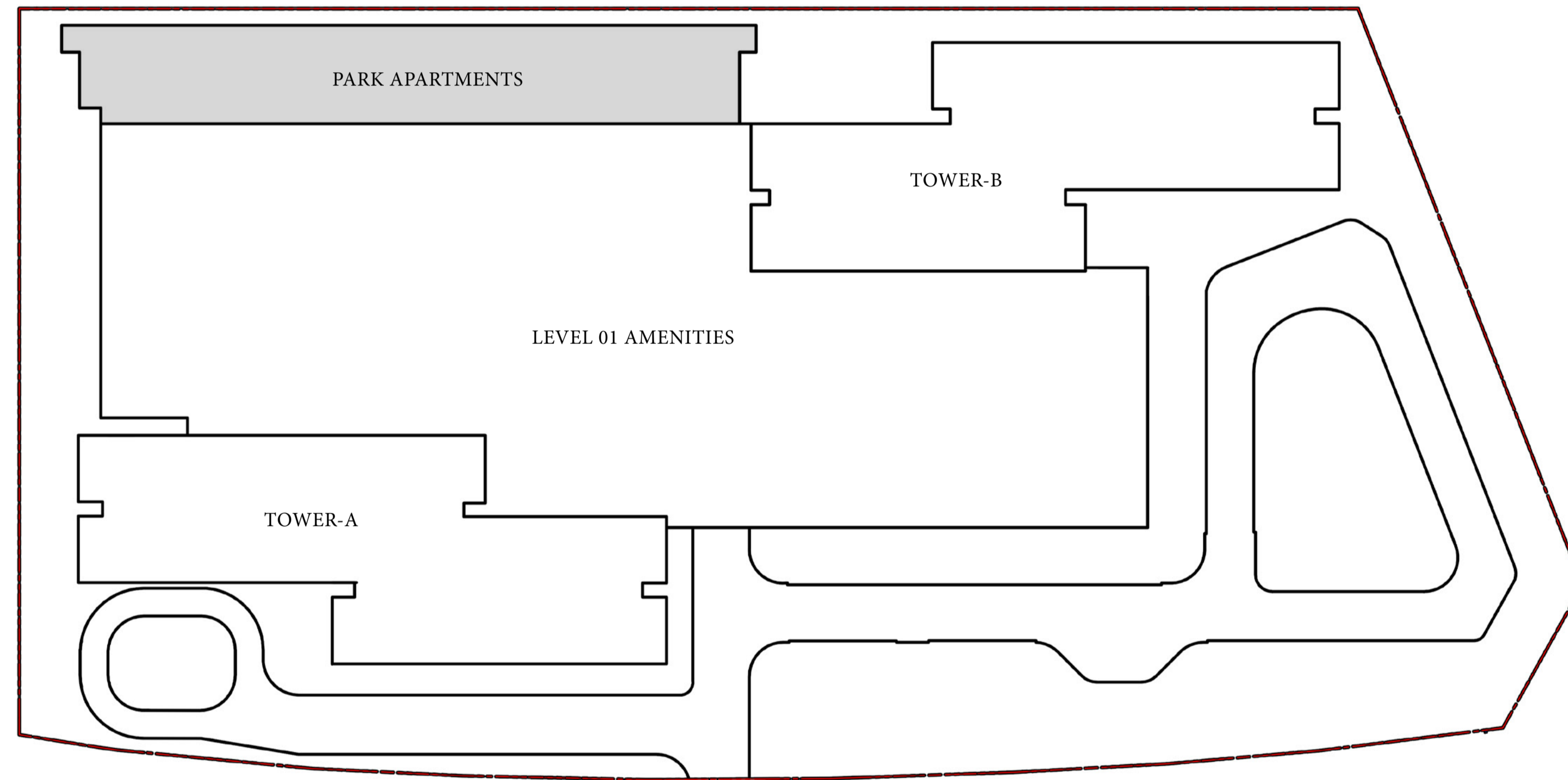
DUBAI HILLS ESTATE

FLOOR PLANS | PARK APARTMENTS

EMAAR

MASTER PLAN

PARK APARTMENTS



Hillsedge

DUBAI HILLS ESTATE

PARK APARTMENTS

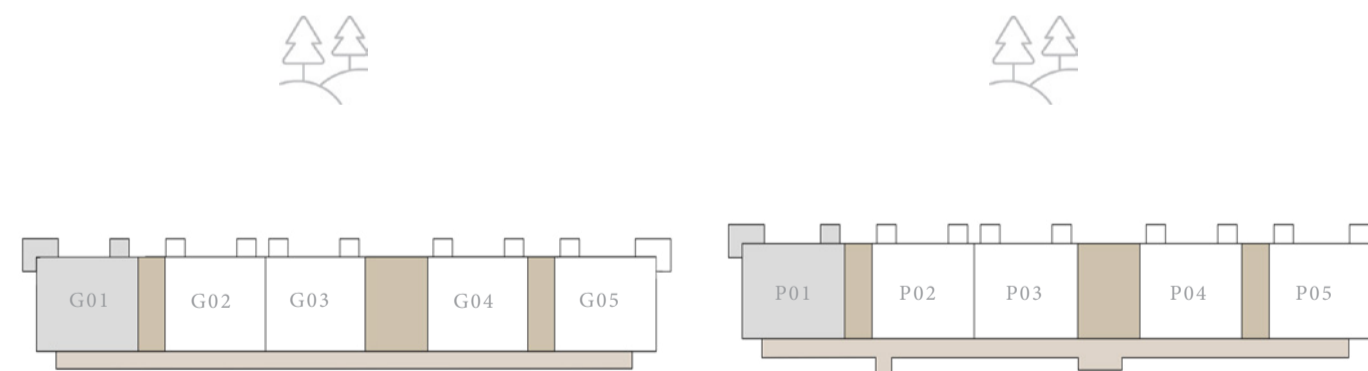
2 BEDROOM TYPE A

UNITS G01, P01

SUITE AREA	1023.22 SQ.FT	95.06 SQ.M
BALCONY AREA	119.91 SQ.FT	11.14 SQ.M
TOTAL AREA	1143.13 SQ.FT	106.20 SQ.M

KEY SECTION

KEYPLAN



GROUND LEVEL

PODIUM LEVEL

FLOOR PLAN 1. All dimensions are in imperial and metric, and measured from finish to finish excluding construction tolerances. 2. All materials, dimensions, and drawings are approximate only. 3. Information is subject to change without notice, at developer's absolute discretion. 4. Actual area may vary from the stated area. 5. Drawings not to scale. 6. All images used are for illustrative purposes only and do not represent the actual size, features, specifications, fittings, and furnishings. 7. The developer reserves the right to make revisions / alterations, at its absolute discretion, without any liability whatsoever.

Hillsedge

DUBAI HILLS ESTATE

PARK APARTMENTS

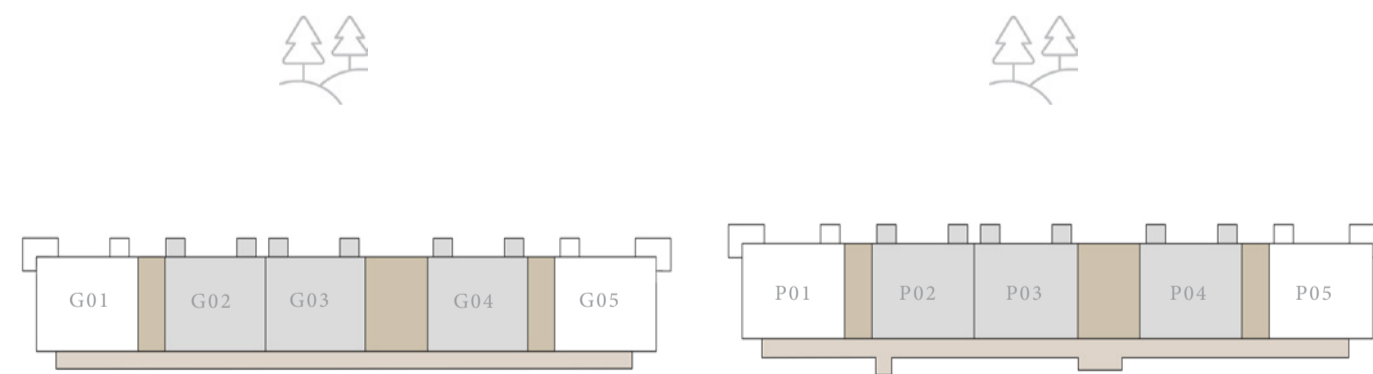
2 BEDROOM TYPE B

UNITS G02, G03, G04, P02, P03, P04

SUITE AREA	1021.82 SQ.FT	94.93 SQ.M
BALCONY AREA	70.61 SQ.FT	6.56 SQ.M
TOTAL AREA	1092.43 SQ.FT	101.49 SQ.M

KEY SECTION

KEYPLAN



GROUND LEVEL

PODIUM LEVEL

FLOOR PLAN 1. All dimensions are in imperial and metric, and measured from finish to finish excluding construction tolerances. 2. All materials, dimensions, and drawings are approximate only. 3. Information is subject to change without notice, at developer's absolute discretion. 4. Actual area may vary from the stated area. 5. Drawings not to scale. 6. All images used are for illustrative purposes only and do not represent the actual size, features, specifications, fittings, and furnishings. 7. The developer reserves the right to make revisions / alterations, at its absolute discretion, without any liability whatsoever.

Hillsedge

DUBAI HILLS ESTATE

PARK APARTMENTS

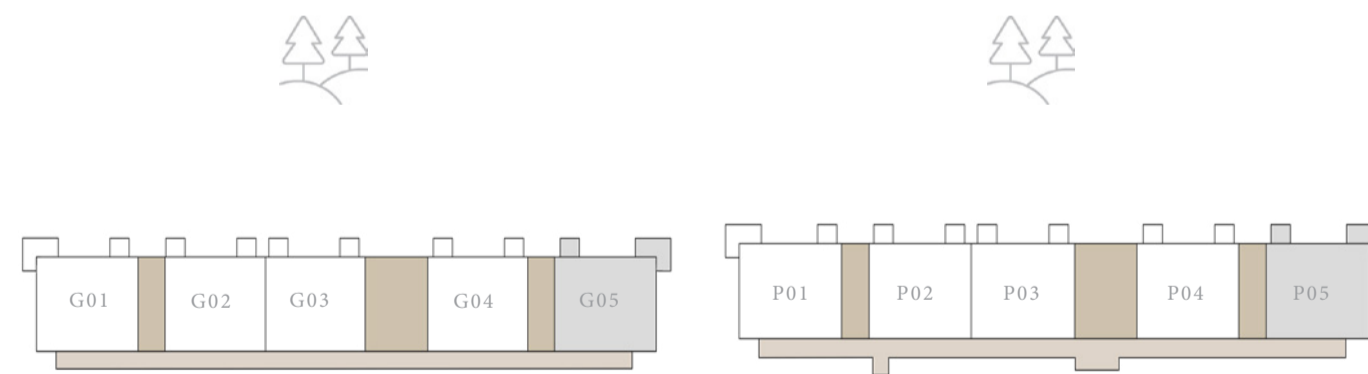
2 BEDROOM TYPE A.1

UNITS G05, P05

SUITE AREA	1022.89 SQ.FT	95.03 SQ.M
BALCONY AREA	119.91 SQ.FT	11.14 SQ.M
TOTAL AREA	1142.80 SQ.FT	106.17 SQ.M

KEY SECTION

KEYPLAN



GROUND LEVEL

PODIUM LEVEL

FLOOR PLAN 1. All dimensions are in imperial and metric, and measured from finish to finish excluding construction tolerances. 2. All materials, dimensions, and drawings are approximate only. 3. Information is subject to change without notice, at developer's absolute discretion. 4. Actual area may vary from the stated area. 5. Drawings not to scale. 6. All images used are for illustrative purposes only and do not represent the actual size, features, specifications, fittings, and furnishings. 7. The developer reserves the right to make revisions / alterations, at its absolute discretion, without any liability whatsoever.