

Radisson

RESIDENCES AL REEM ISLAND ABU DHABI

by



ROYAL
DEVELOPMENT HOLDING

AN ESG COMPANY

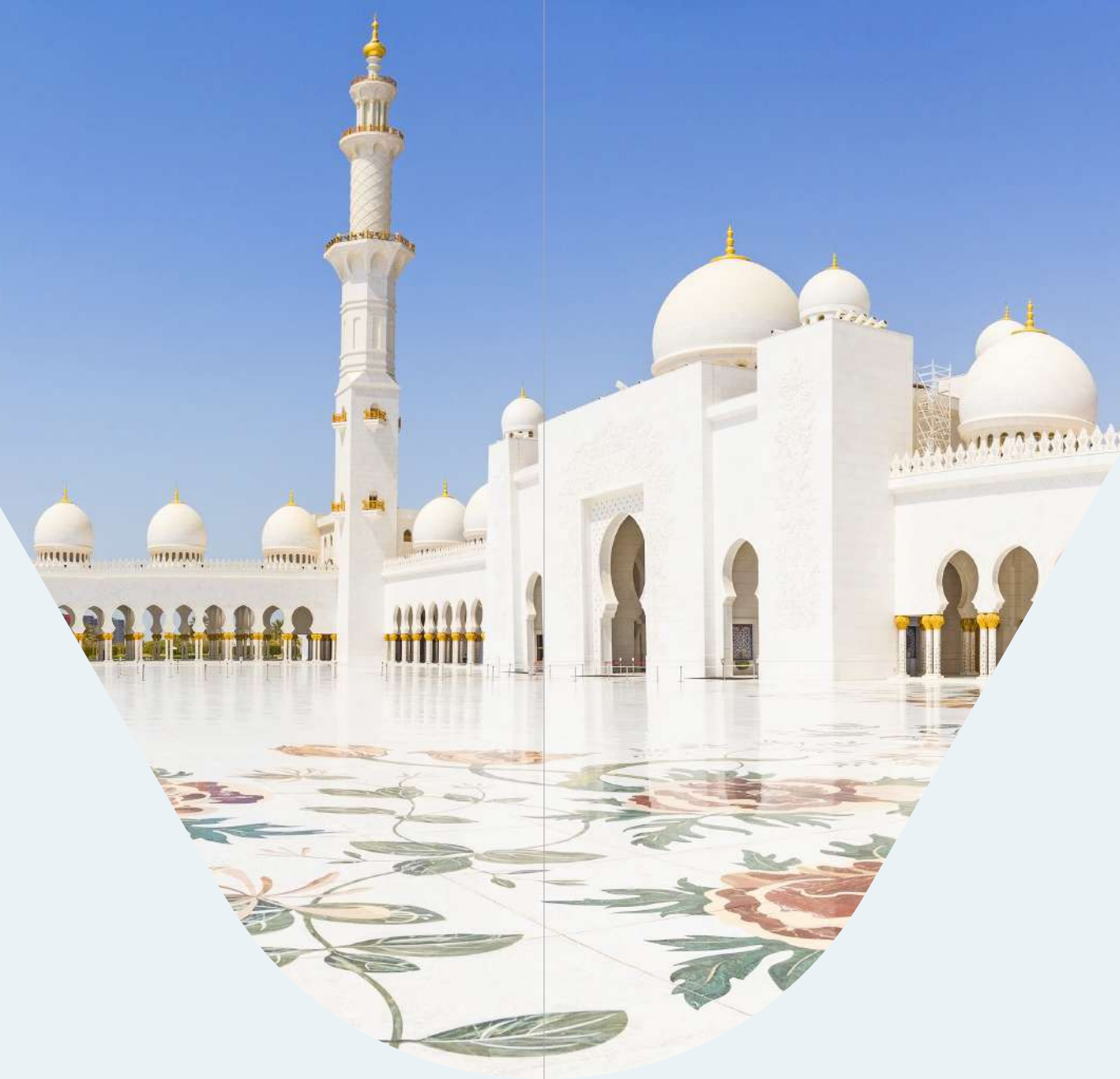
Life in every mode

Radisson

RESIDENCES AL REEM ISLAND ABU DHABI

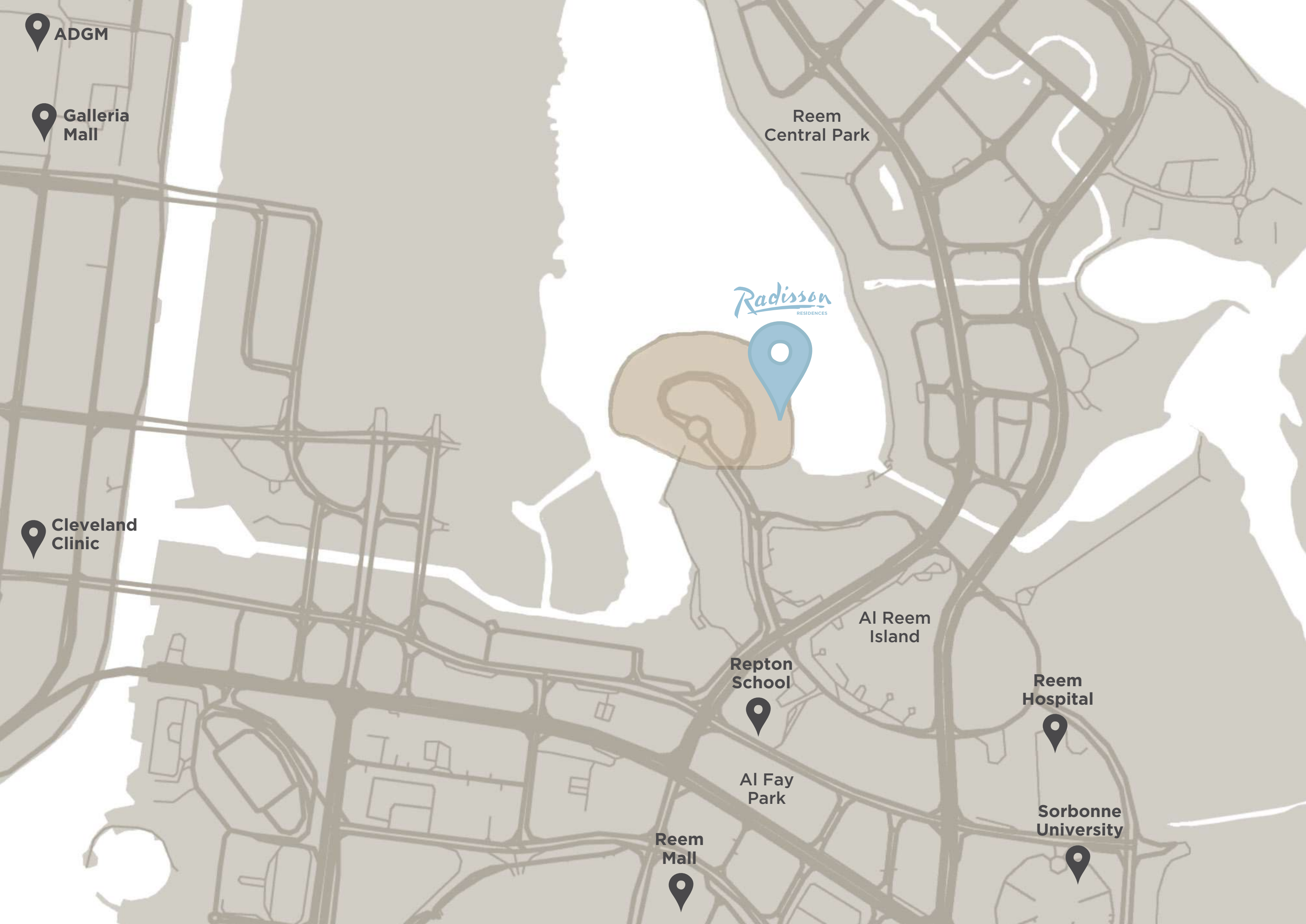
A DESTINATION FOR EVERY SIDE OF LIFE

Abu Dhabi is a dynamic centre of innovation and culture that redefines the art of living well, your way. Rooted in heritage yet open to the world, it invites you to live seamlessly between work and leisure, modernity and tradition. Renowned for its unmatched safety and stability, this hub for finance, culture, sports and sustainable innovation offers a versatile quality of life that adapts to you.



LOCATION





MINUTES TO WHAT MATTERS

Radisson Residences Al Reem Island Abu Dhabi is located where the land meets the water and the city exhales into calm. It stands where urban refinement converges with the serene rhythm of the mangroves. With a rare union of prestige, privacy and panoramic beauty, it offers ready connectivity to Abu Dhabi's finest destinations.

Downtown Abu Dhabi

20 minutes

Zayed International Airport

25 minutes

Sorbonne University

5 minutes

Galleria Mall

5 minutes

Guggenheim Museum

20 minutes

Zayed National Museum

20 minutes

Repton School

5 minutes

Reem Mall

5 minutes

Louvre Abu Dhabi

20 minutes

Reem Hospital

5 minutes

Cleveland Clinic

5 minutes

ADGM

5 minutes



LIFE IN EVERY MODE

Designed around the rhythms of contemporary living, Radisson Residences Al Reem Island Abu Dhabi is a social address where sophistication flows effortlessly, and every moment feels thoughtfully considered. The world's first ever standalone Radisson residence, it features three elegant towers linked by a shared podium to offer a choice of lifestyles with your kind of balance, from lively social scenes to serene private spaces. Floor-to-ceiling windows open onto sweeping mangrove and water views, creating a sanctuary that feels intimate, balanced and timeless. Radisson's intuitive service and the thoughtfully designed communal spaces embrace every lifestyle mode. This is a home that feels grounded and graceful, where life can be as private as you like and as social as you choose.

A RESIDENCE ENRICHED WITH REWARDS

Exclusive privileges for owners at Radisson Residences.

As an owner at Radisson Residences Al Reem Island Abu Dhabi, you can expect a world of thoughtful hospitality, where every stay and every service is designed to feel more seamless, personal and rewarding. And you'll also receive Radisson Rewards Premium Membership - unlocking privileges that elevate everyday living, enhance your travel, and add comfort and recognition wherever you go.

Enjoy exclusive ownership benefits including:

- Up to 15% Member-Only Rate
- Priority Line*
- Complimentary Upgrade*
- Free Early Check-in & Late Check-out*
- 10% F&B Discount
- Discount Booster (up to 20% additional savings)
- 24h Exclusive Customer Center
- Priority List (first available room)
- My Favorite Room selection
- My Luggage Storage

*Subject to availability at the moment of check-in



THE RESIDENCE







TYOLOGY



APARTMENT TYPES TO FIT YOUR LIFE

STUDIOS

444 to 561

SQFT

1-BR APARTMENTS

803 to 1,265

SQFT

2-BR APARTMENTS

1,322 to 1,706

SQFT

3-BR APARTMENTS

3,061 to 3,099

SQFT

2-BR TOWNHOUSES

1,903 to 2,139

SQFT

4-BR TOWNHOUSES

4,950

SQFT



AMENITIES



MADE FOR YOUR EVERYDAY

At Radisson Residences Al Reem Island Abu Dhabi, we have curated world-class amenities to offer not just an elevated lifestyle, but a life lived with intention. The refined selection of amenities includes serene shared spaces, wellness amenities, retail offerings, dining choices and more.



Sunlit pool overlooking mangroves



Community event spaces



Landscaped courtyards and garden zones



Waterfront retail, dining and cafés



BBQ area



Access to boardwalks, nature trails and mangrove paddle routes



State-of-the-art fitness centre



Outdoor kids' play areas



Yoga Room



Recreational lounge



Padel Court











A PODIUM TO CONNECT

A shared waterfront podium connects three towers as one social address that invites you to dwell with intention, live in your rhythm, and feel grounded yet liberated. It is an elevated expression of contemporary living with expansive spaces to connect, indulge, relax and rejuvenate. The podium at Radisson Residences Al Reem Island Abu Dhabi enables you to find your balance in an ambience that is refined, timeless and effortlessly welcoming.



INTERIOR DESIGN



NATURALLY INSPIRED HARMONY

Within each residence, layers of light, shapes and textures converge in quiet harmony. Every moment is soft, intimate and quietly alive. Light drifts across muted tones and tactile surfaces, while deep green accents and natural textures echo the calm of the mangroves. Every line and material is chosen with purpose, balancing comfort and sophistication. Thoughtful detailing and soft lighting bring a sense of quiet sophistication and ease. Together they create a sanctuary that feels timeless, grounded and inherently considered.





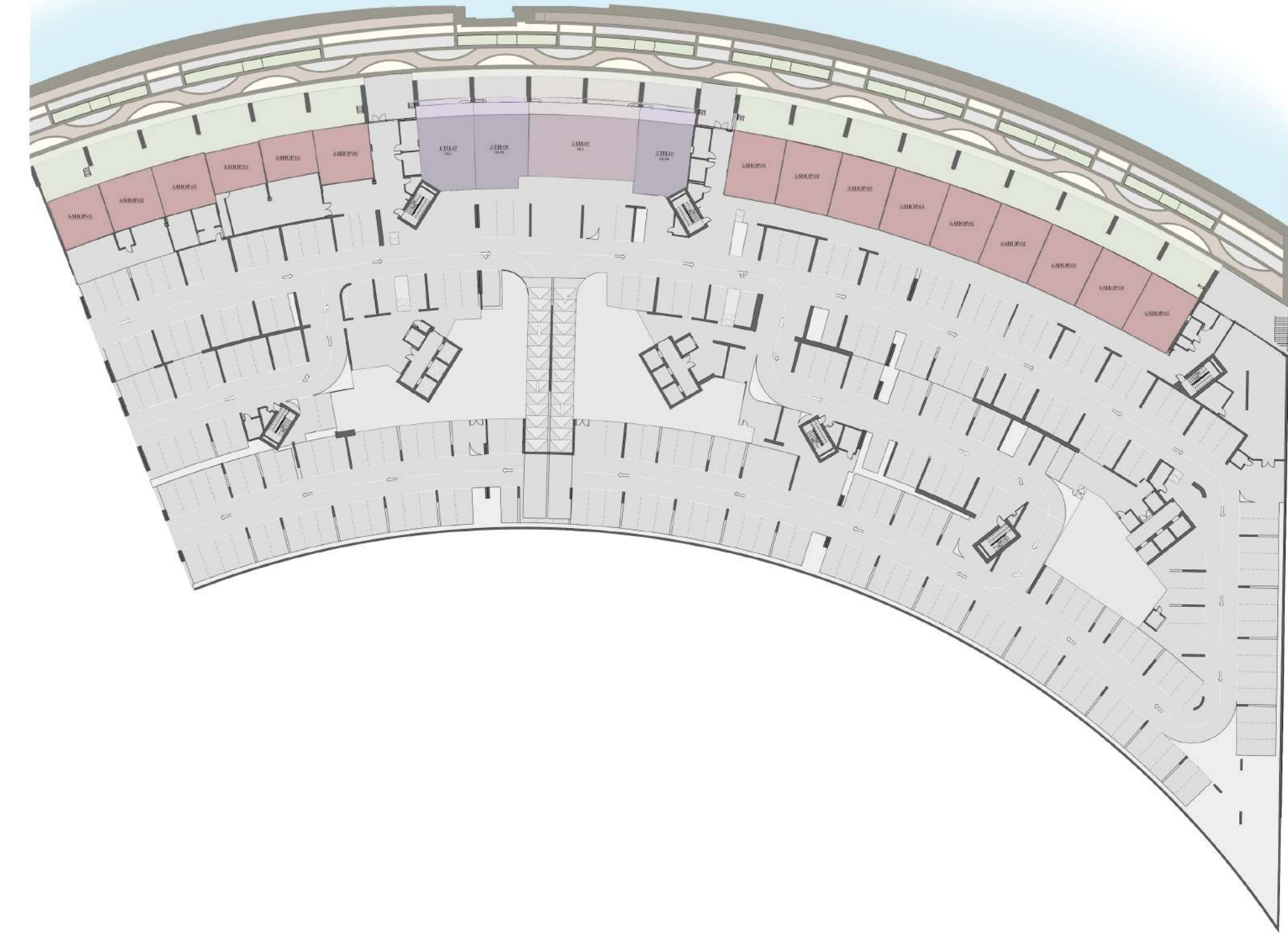




DESIGNED FOR EVERY MODE

Every detail at Radisson Residences Al Reem Island Abu Dhabi speaks to a refined simplicity rooted in timeless elegance. Every aspect is crafted to nurture a sense of community and belonging, while the spacious layouts bring a sense of calm and clarity to contemporary living.

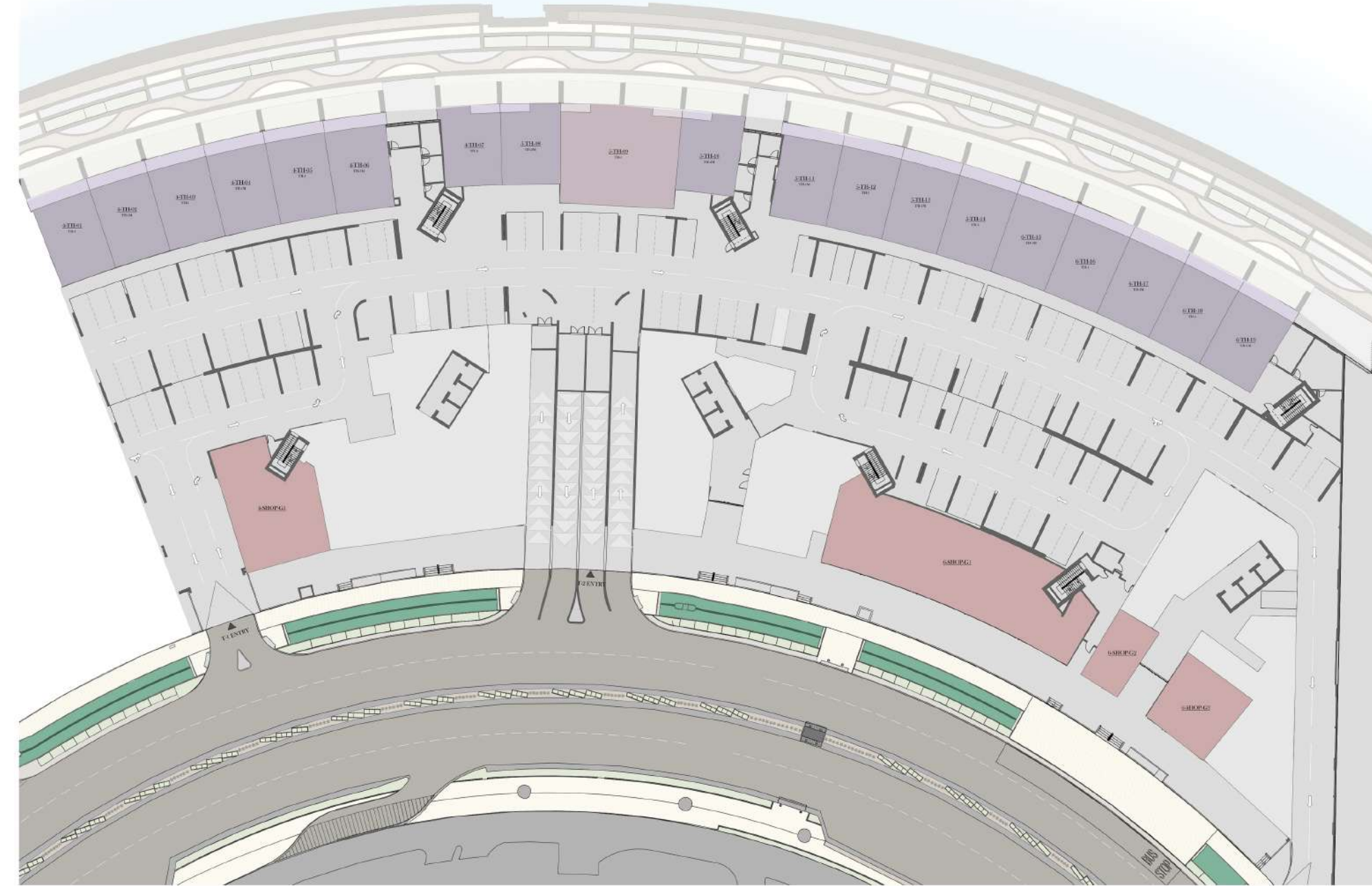
PROMENADE LEVEL FLOOR PLAN



■ SHOP ■ TOWNHOUSE - 2 BEDROOM ■ TOWNHOUSE - 4 BEDROOM

Floor layouts must only be referred for locating the unit type on a floor. Balcony profiles may differ slightly during subsequent design development stages.

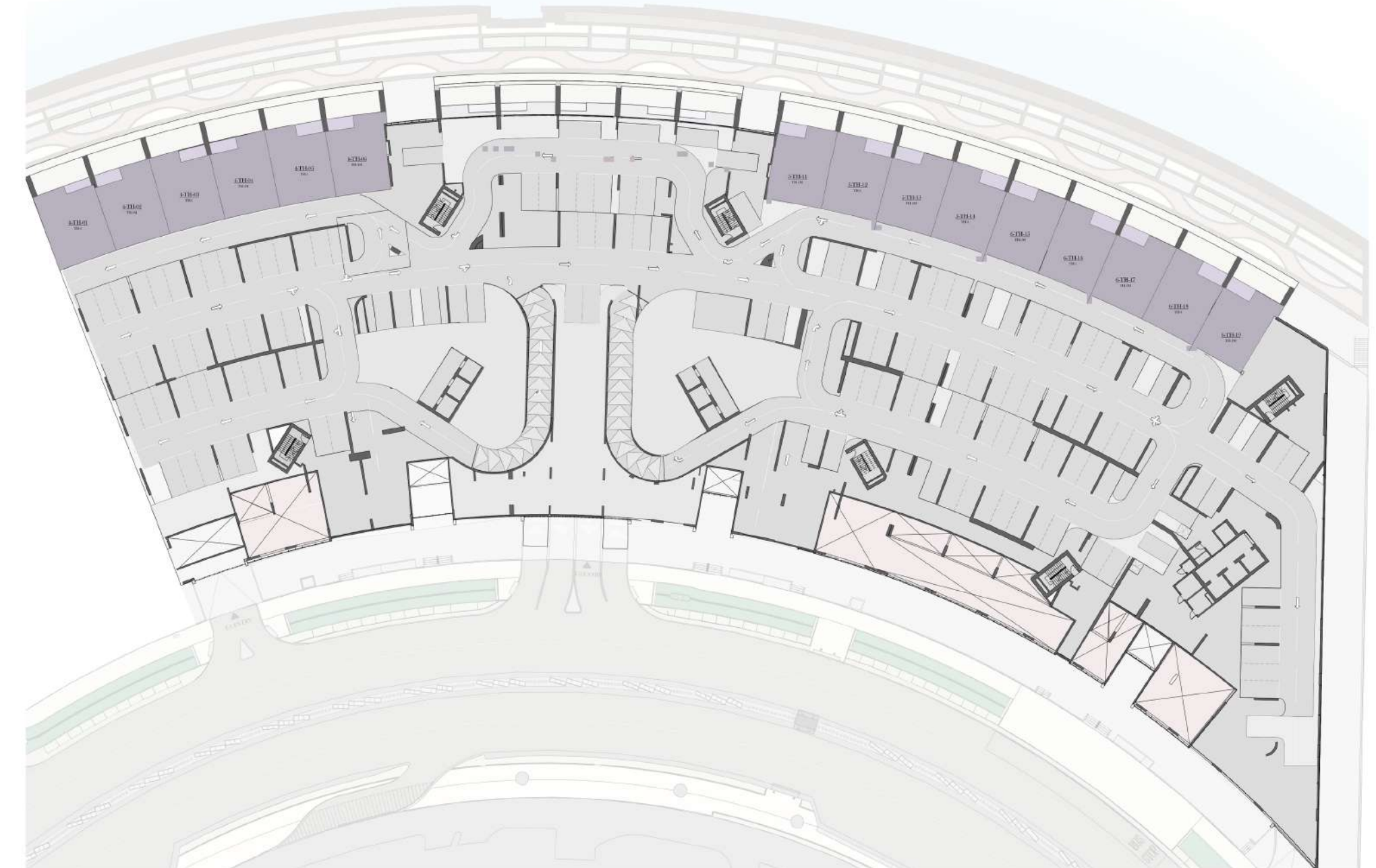
GROUND FLOOR PLAN



■ SHOP ■ TOWNHOUSE - 2 BEDROOM ■ TOWNHOUSE - 4 BEDROOM

Floor layouts must only be referred for locating the unit type on a floor. Balcony profiles may differ slightly during subsequent design development stages.

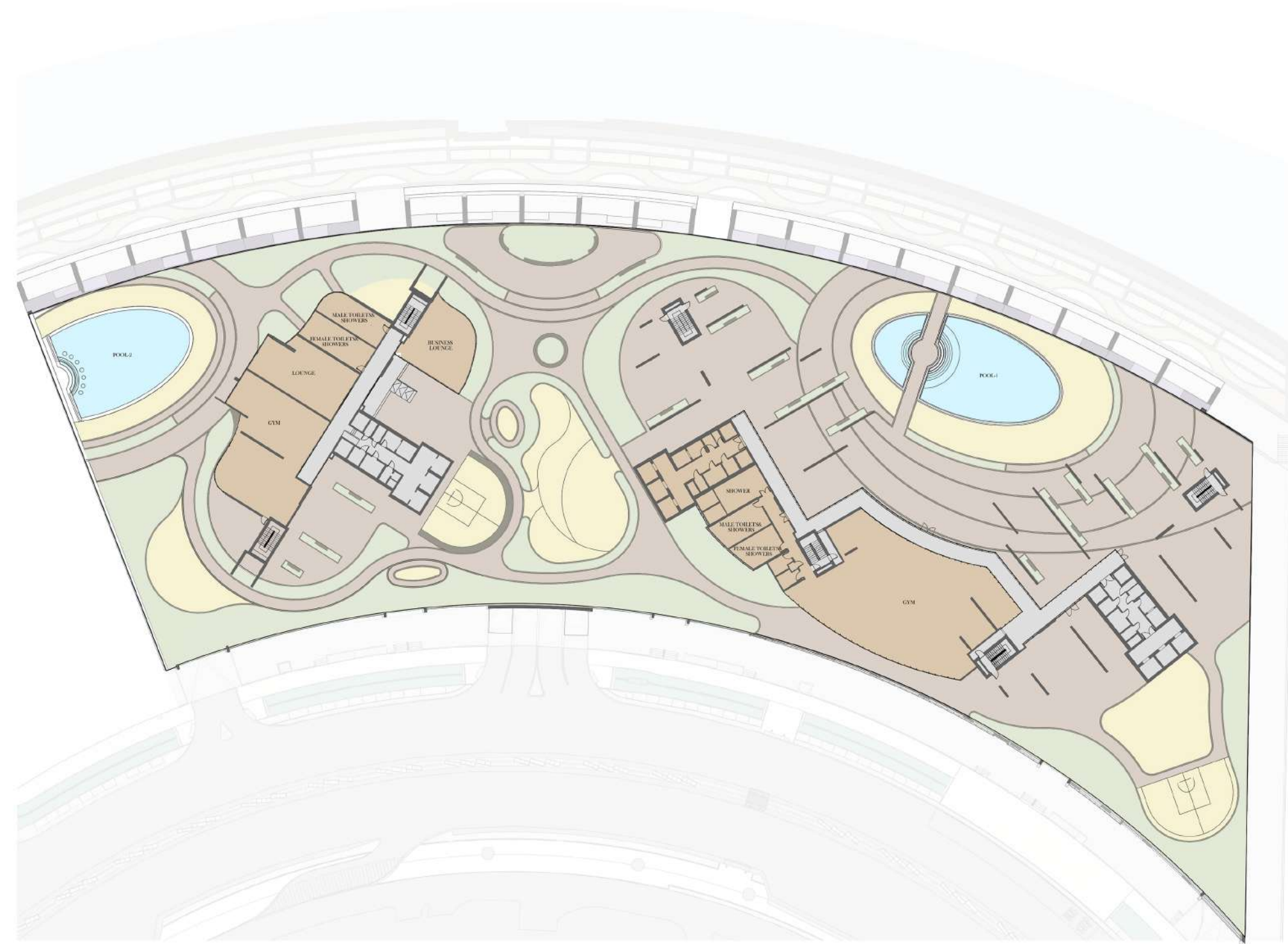
PODIUM FIRST FLOOR PLAN



■ TOWNHOUSE - 2 BEDROOM

Floor layouts must only be referred for locating the unit type on a floor. Balcony profiles may differ slightly during subsequent design development stages.

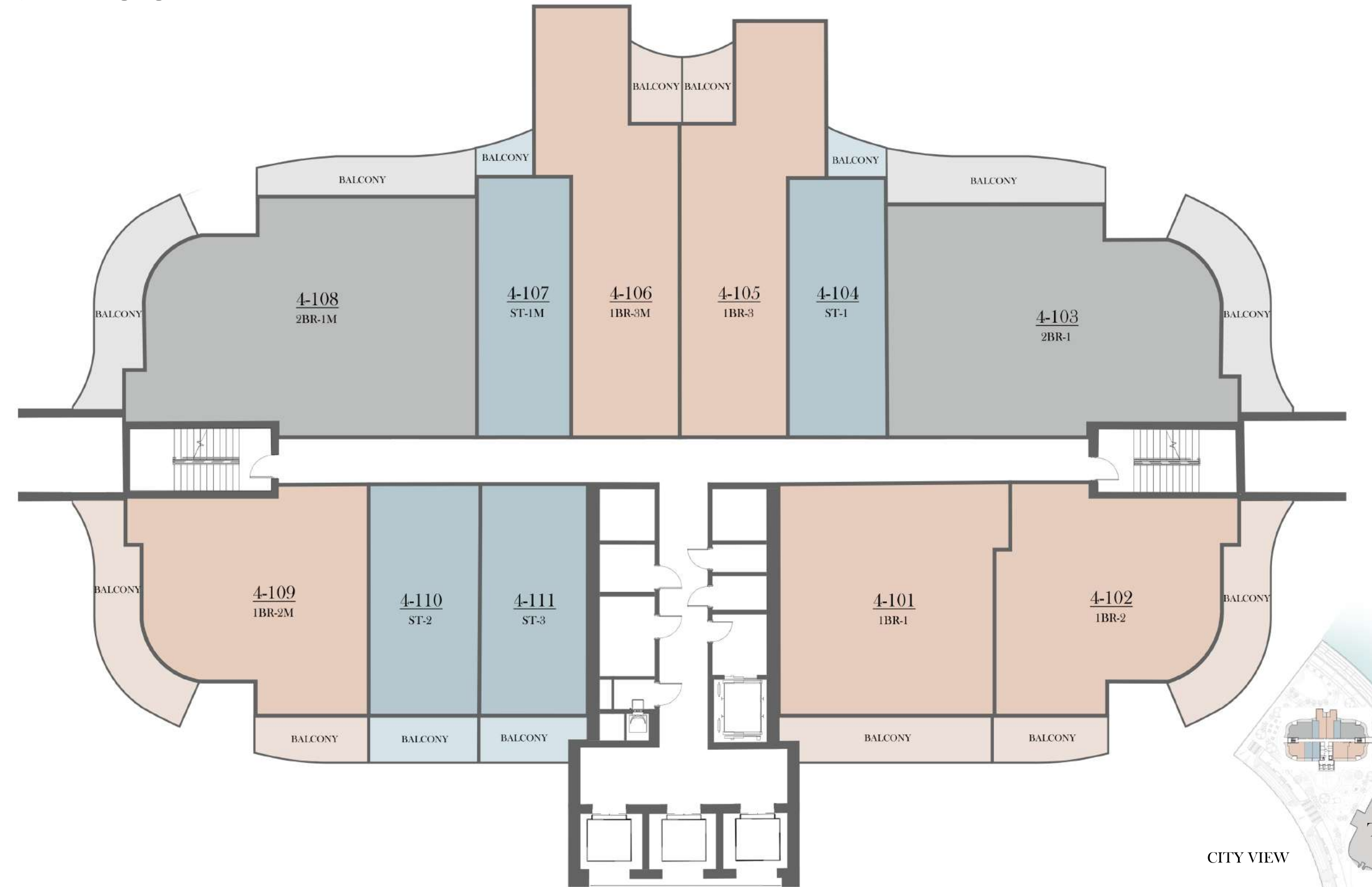
POOL DECK FLOOR PLAN



AMENITIES

Floor layouts must only be referred for locating the unit type on a floor. Balcony profiles may differ slightly during subsequent design development stages.

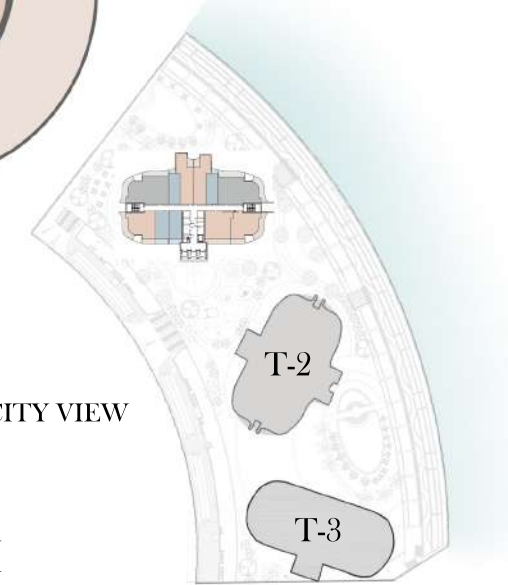
TOWER 1 1st - 24th FLOOR PLAN



STUDIO

1 BEDROOM

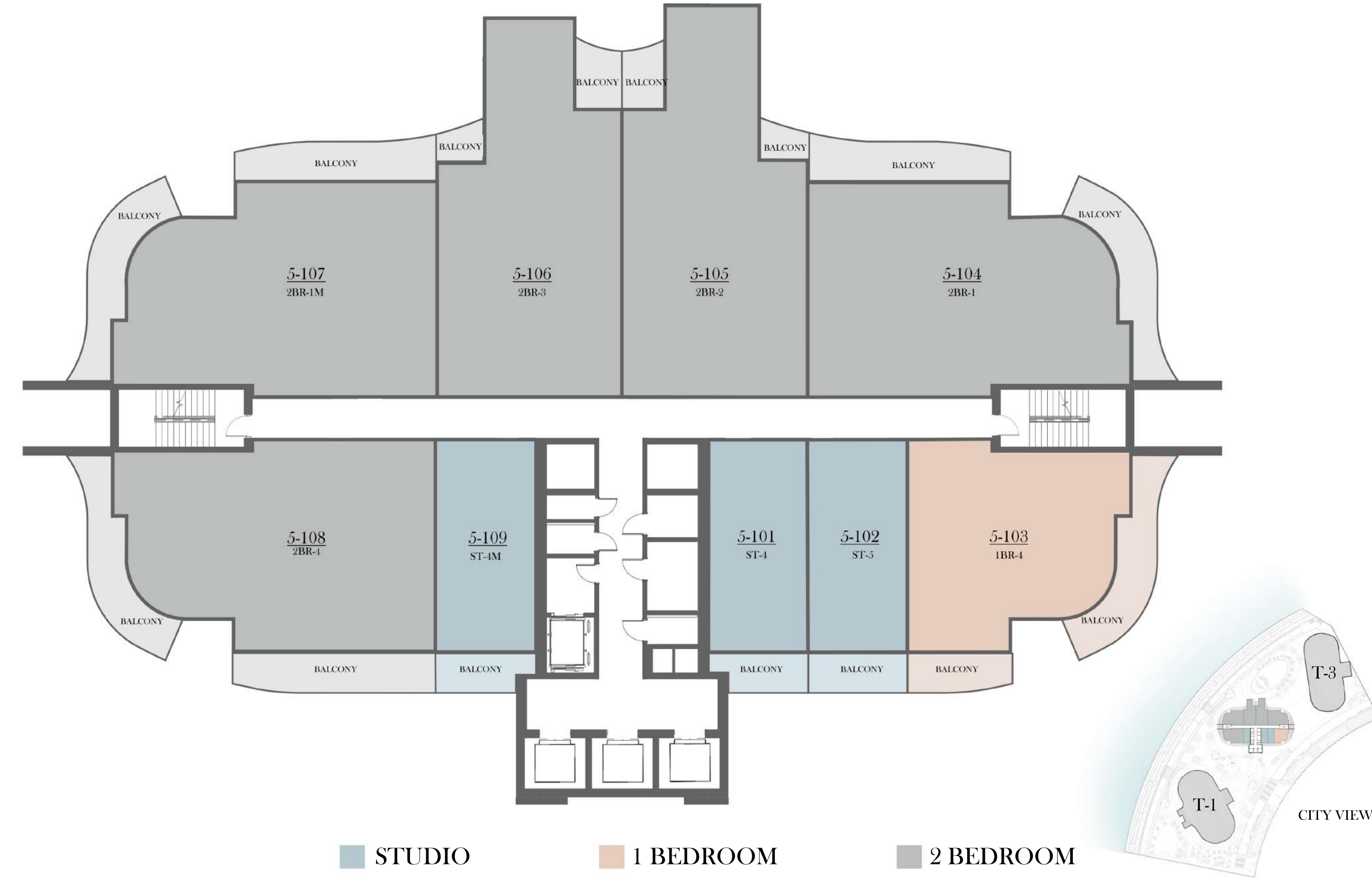
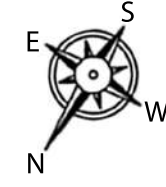
2 BEDROOM



Floor layouts must only be referred for locating the unit type on a floor. Balcony profiles may differ slightly during subsequent design development stages.

TOWER 2

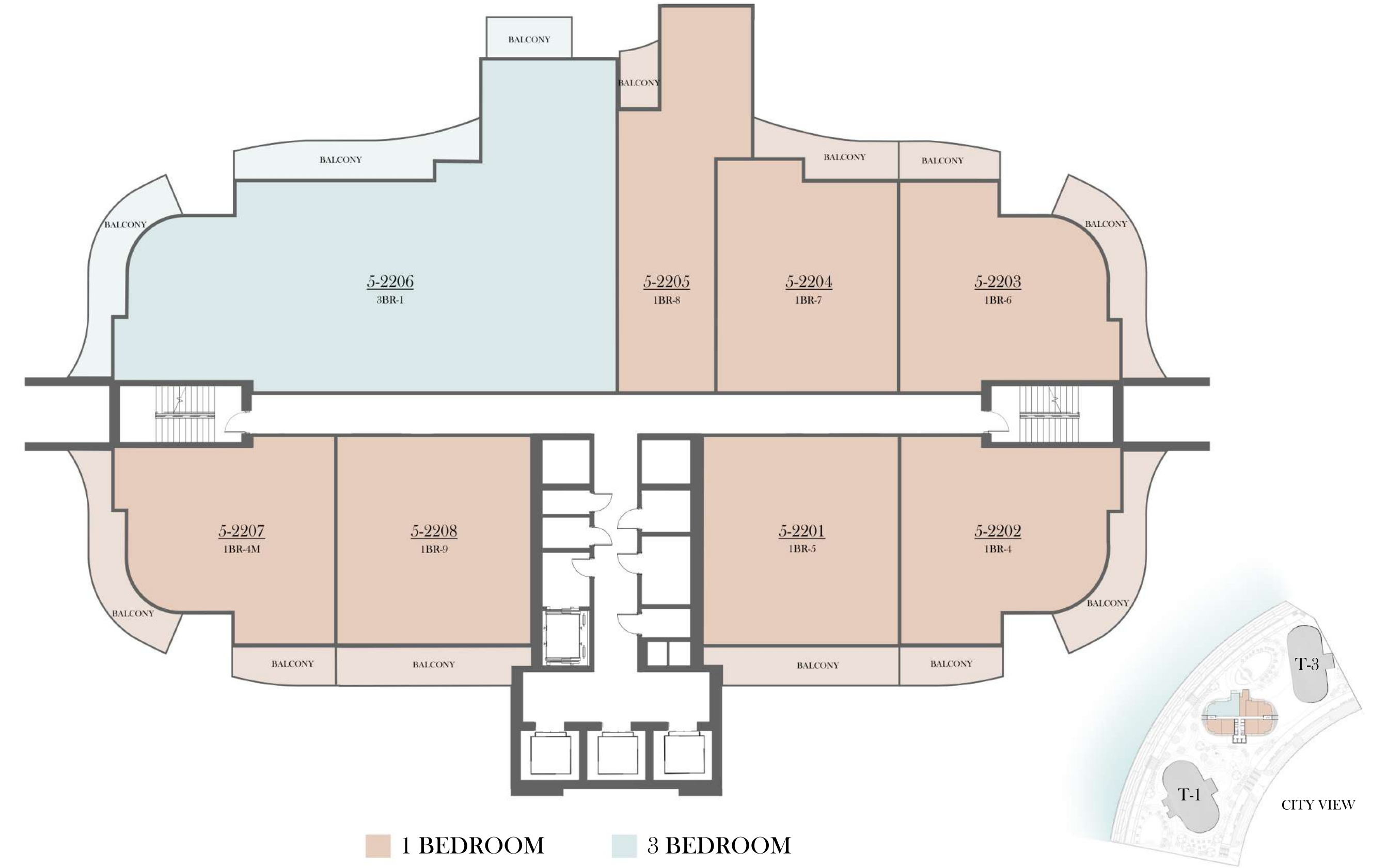
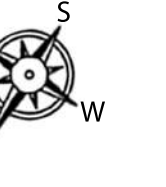
1st to 21st FLOOR PLAN



Floor layouts must only be referred for locating the unit type on a floor. Balcony profiles may differ slightly during subsequent design development stages.

TOWER 2

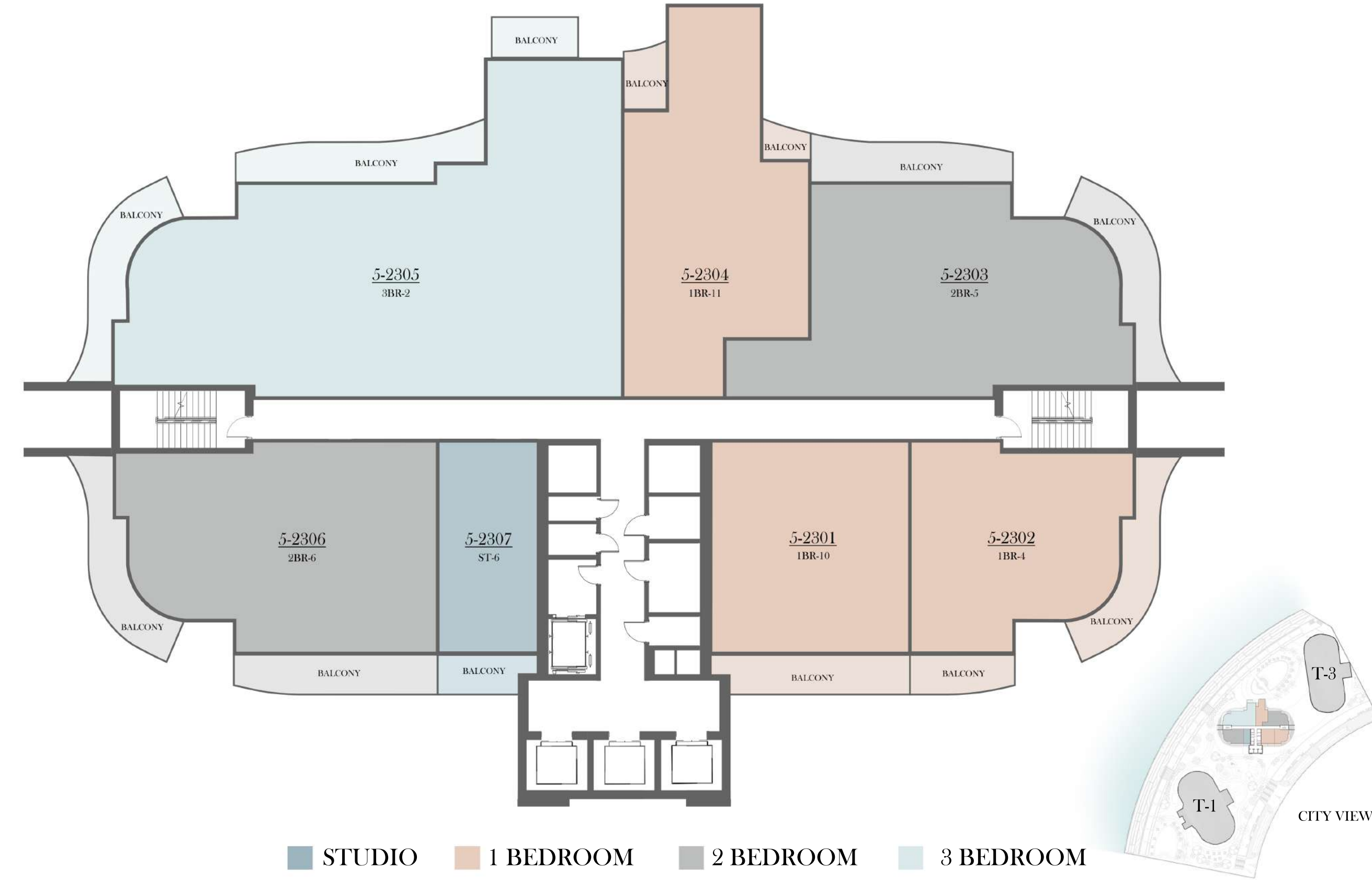
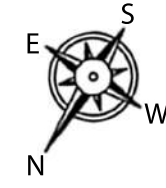
22nd FLOOR PLAN



Floor layouts must only be referred for locating the unit type on a floor. Balcony profiles may differ slightly during subsequent design development stages.

TOWER 2

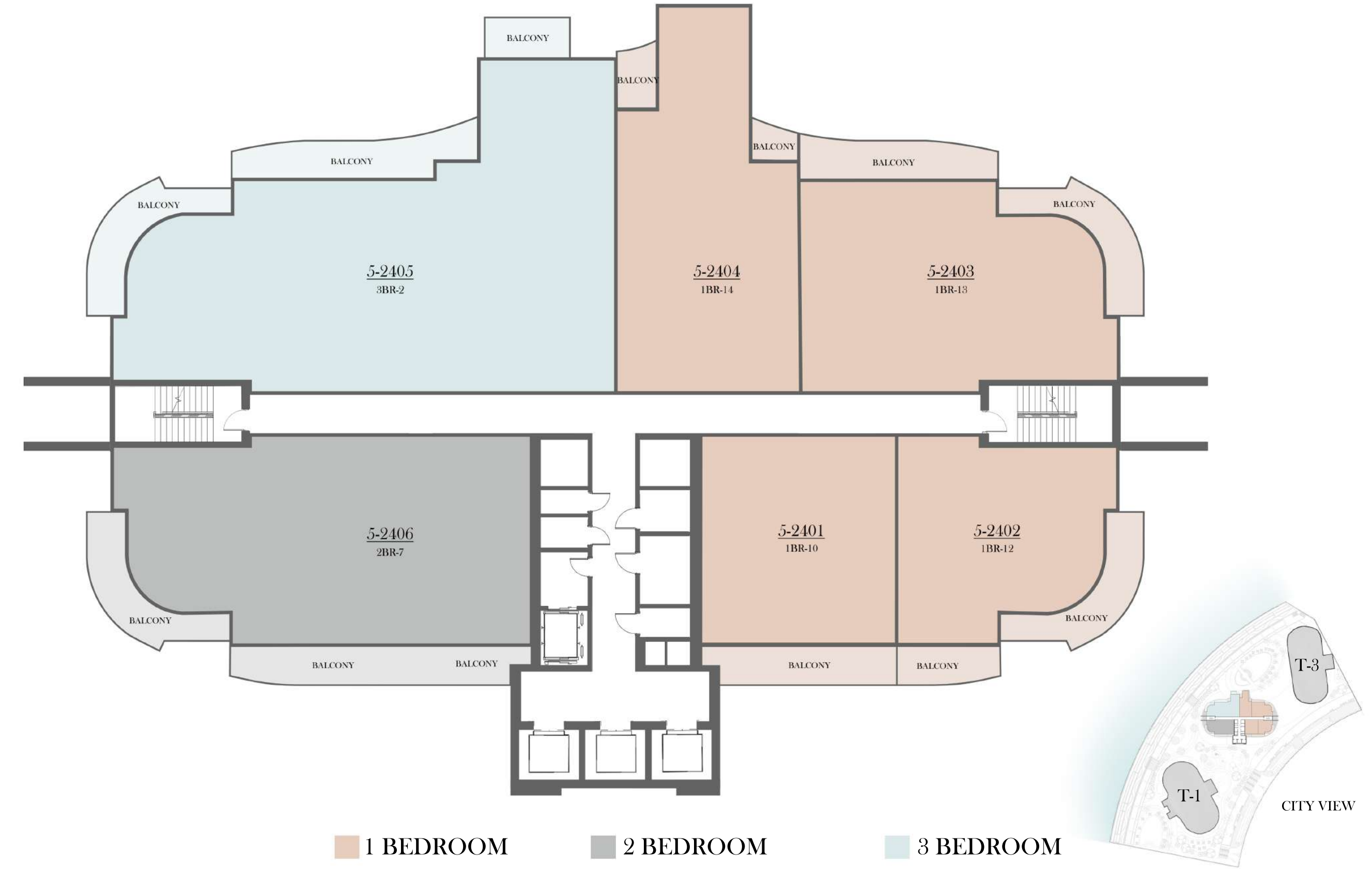
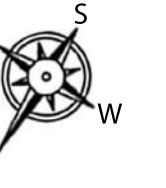
23rd FLOOR PLAN



Floor layouts must only be referred for locating the unit type on a floor. Balcony profiles may differ slightly during subsequent design development stages.

TOWER 2

24th FLOOR PLAN



Floor layouts must only be referred for locating the unit type on a floor. Balcony profiles may differ slightly during subsequent design development stages.

UNIT LAYOUTS



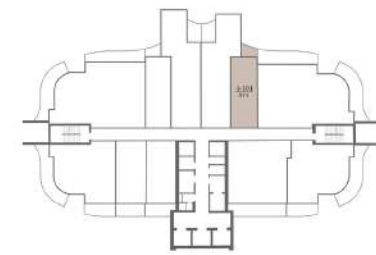
STUDIOS

STUDIO TYPE ST-1



No. of BR	STUDIO
Total Area	444 Sq ft *

(*)Starting from



T1 - LEVEL 1 - 24

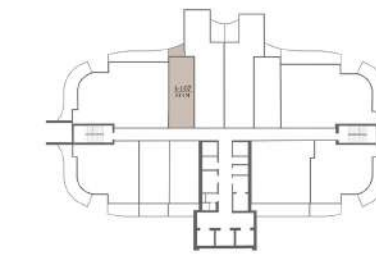
Disclaimer: Dimensions, apartment areas & layouts are indicative and may differ slightly during subsequent design development stages. Furniture shown is for illustration purpose only.

STUDIO TYPE ST-1M



No. of BR	STUDIO
Total Area	451 Sq ft *

(*)Starting from



T1 - LEVEL 1 - 24

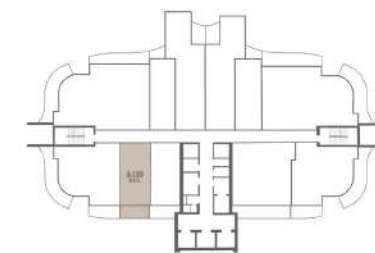
Disclaimer: Dimensions, apartment areas & layouts are indicative and may differ slightly during subsequent design development stages. Furniture shown is for illustration purpose only.

STUDIO
TYPE ST-2



No. of BR	STUDIO
Total Area	486 Sq ft *

(*Starting from



T1 - LEVEL 1 - 24

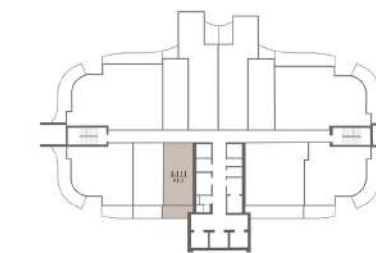
Disclaimer: Dimensions, apartment areas & layouts are indicative and may differ slightly during subsequent design development stages. Furniture shown is for illustration purpose only.

STUDIO
TYPE ST-3



No. of BR	STUDIO
Total Area	508 Sq ft *

(*Starting from



T1 - LEVEL 1 - 24

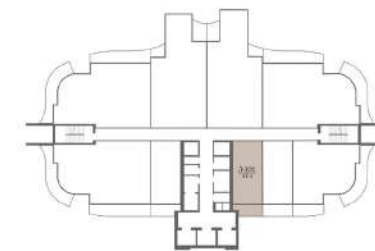
Disclaimer: Dimensions, apartment areas & layouts are indicative and may differ slightly during subsequent design development stages. Furniture shown is for illustration purpose only.

STUDIO
TYPE ST-4



No. of BR	STUDIO
Total Area	518 Sq ft *

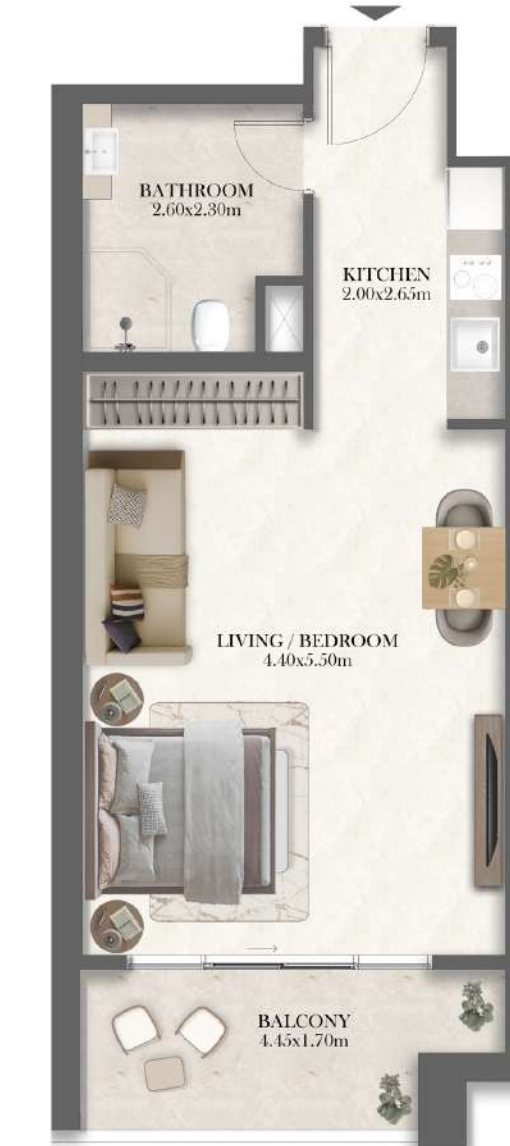
(*)Starting from



T2 - LEVEL 1 - 21

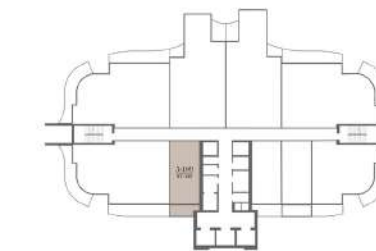
Disclaimer: Dimensions, apartment areas & layouts are indicative and may differ slightly during subsequent design development stages. Furniture shown is for illustration purpose only.

STUDIO
TYPE ST-4M



No. of BR	STUDIO
Total Area	519 Sq ft *

(*)Starting from



T2 - LEVEL 1 - 21

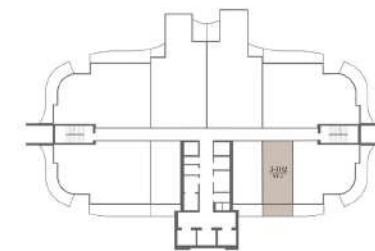
Disclaimer: Dimensions, apartment areas & layouts are indicative and may differ slightly during subsequent design development stages. Furniture shown is for illustration purpose only.

STUDIO
TYPE ST-5



No. of BR	STUDIO
Total Area	497 Sq ft *

(*Starting from



T2 - LEVEL 1 - 21

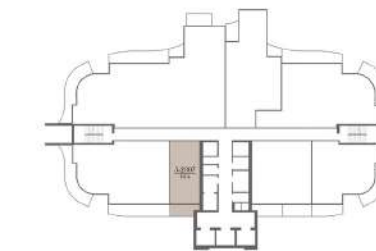
Disclaimer: Dimensions, apartment areas & layouts are indicative and may differ slightly during subsequent design development stages. Furniture shown is for illustration purpose only.

STUDIO
TYPE ST-6



No. of BR	STUDIO
Total Area	519 Sq ft *

(*Starting from

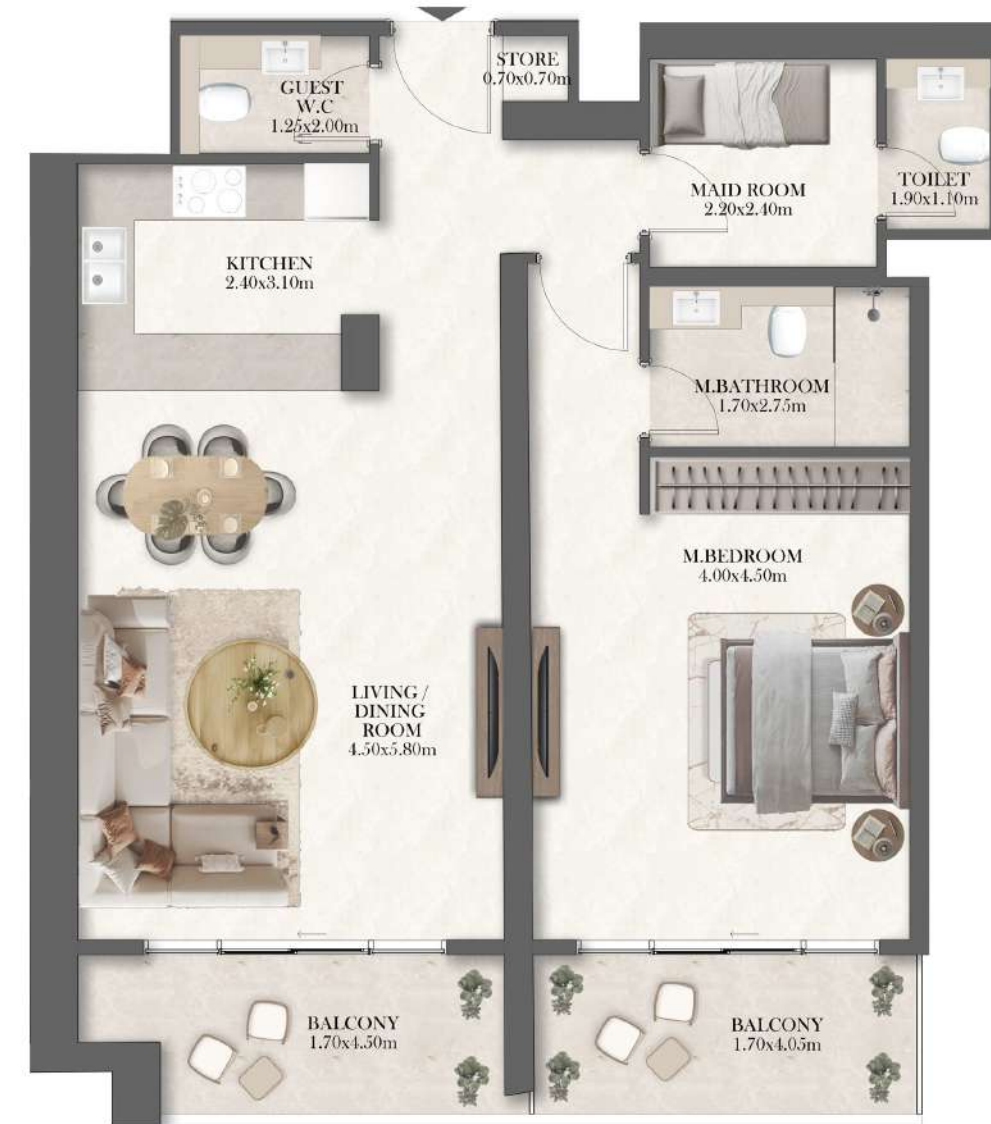


T2 - LEVEL 23

Disclaimer: Dimensions, apartment areas & layouts are indicative and may differ slightly during subsequent design development stages. Furniture shown is for illustration purpose only.

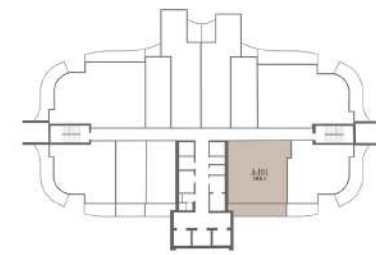
1, 2 AND 3 BR APARTMENTS

1 BEDROOM TYPE 1BR-1



No. of BR	1
Total Area	1051 Sq ft *

(*)Starting from



T1 - LEVEL 1 - 24

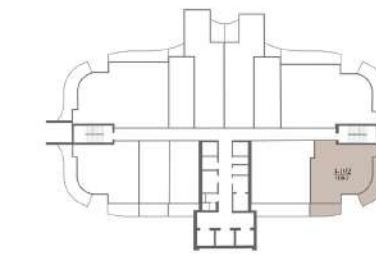
Disclaimer: Dimensions, apartment areas & layouts are indicative and may differ slightly during subsequent design development stages. Furniture shown is for illustration purpose only.

1 BEDROOM TYPE 1BR-2



No. of BR	1
Total Area	1084 Sq ft *

(*)Starting from



T1 - LEVEL 1 - 24

Disclaimer: Dimensions, apartment areas & layouts are indicative and may differ slightly during subsequent design development stages. Furniture shown is for illustration purpose only.

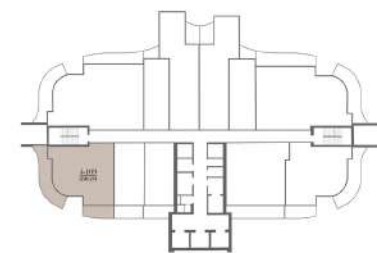
1 BEDROOM

TYPE 1BR-2M



No. of BR	1
Total Area	1082 Sq ft *

(*)Starting from



T1 - LEVEL 1 - 24

Disclaimer: Dimensions, apartment areas & layouts are indicative and may differ slightly during subsequent design development stages. Furniture shown is for illustration purpose only.

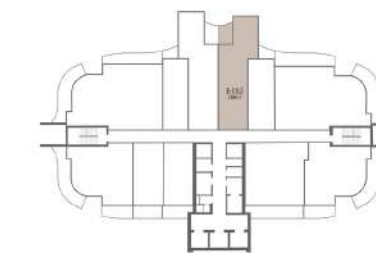
1 BEDROOM

TYPE 1BR-3



No. of BR	1
Total Area	803 Sq ft *

(*)Starting from



T1 - LEVEL 1 - 24

Disclaimer: Dimensions, apartment areas & layouts are indicative and may differ slightly during subsequent design development stages. Furniture shown is for illustration purpose only.

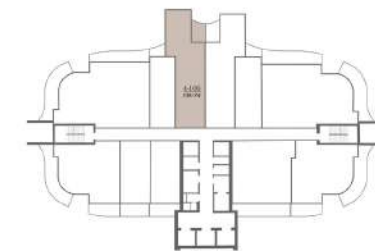
1 BEDROOM

TYPE 1BR-3M



No. of BR	1
Total Area	835 Sq ft *

(*Starting from



T1 - LEVEL 1 - 24

Disclaimer: Dimensions, apartment areas & layouts are indicative and may differ slightly during subsequent design development stages. Furniture shown is for illustration purpose only.

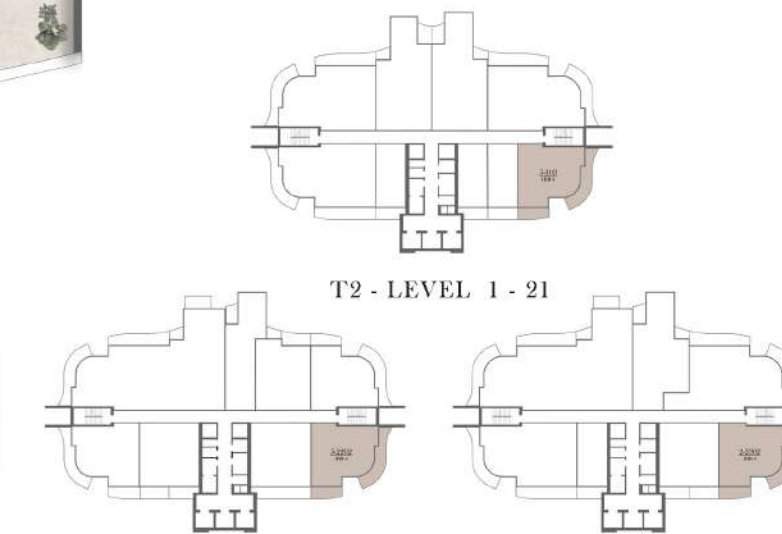
1 BEDROOM

TYPE 1BR-4



No. of BR	1
Total Area	1078 Sq ft *

(*Starting from



T2 - LEVEL 22

T2 - LEVEL 23

Disclaimer: Dimensions, apartment areas & layouts are indicative and may differ slightly during subsequent design development stages. Furniture shown is for illustration purpose only.

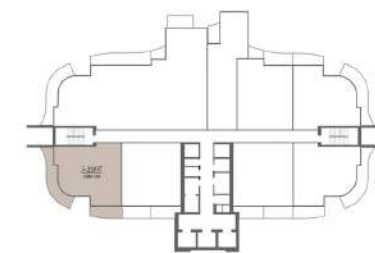
1 BEDROOM

TYPE 1BR-4M



No. of BR	1
Total Area	1105 Sq ft *

(*Starting from



T2 - LEVEL 22

Disclaimer: Dimensions, apartment areas & layouts are indicative and may differ slightly during subsequent design development stages. Furniture shown is for illustration purpose only.

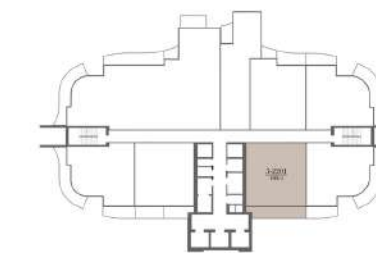
1 BEDROOM

TYPE 1BR-5



No. of BR	1
Total Area	1067 Sq ft *

(*Starting from



T2 - LEVEL 22

Disclaimer: Dimensions, apartment areas & layouts are indicative and may differ slightly during subsequent design development stages. Furniture shown is for illustration purpose only.

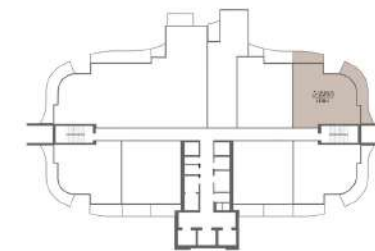
1 BEDROOM

TYPE 1BR-6



No. of BR	1
Total Area	1118 Sq ft *

(*)Starting from



T2 - LEVEL 22

Disclaimer: Dimensions, apartment areas & layouts are indicative and may differ slightly during subsequent design development stages. Furniture shown is for illustration purpose only.

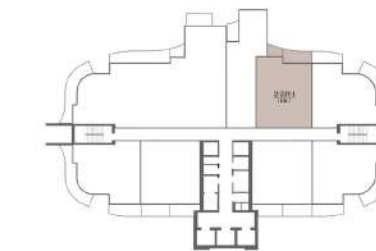
1 BEDROOM

TYPE 1BR-7



No. of BR	1
Total Area	1021 Sq ft *

(*)Starting from



T2 - LEVEL 22

Disclaimer: Dimensions, apartment areas & layouts are indicative and may differ slightly during subsequent design development stages. Furniture shown is for illustration purpose only.

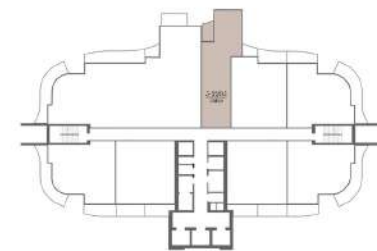
1 BEDROOM

TYPE 1BR-8



No. of BR	1
Total Area	847 Sq ft *

(*)Starting from



T2 - LEVEL 22

Disclaimer: Dimensions, apartment areas & layouts are indicative and may differ slightly during subsequent design development stages. Furniture shown is for illustration purpose only.

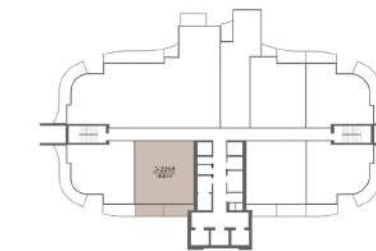
1 BEDROOM

TYPE 1BR-9



No. of BR	1
Total Area	1063 Sq ft *

(*)Starting from



T2 - LEVEL 22

Disclaimer: Dimensions, apartment areas & layouts are indicative and may differ slightly during subsequent design development stages. Furniture shown is for illustration purpose only.

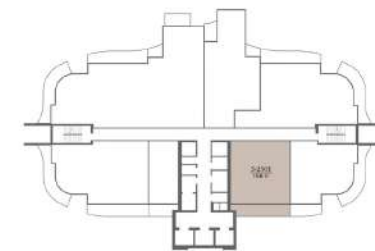
1 BEDROOM

TYPE 1BR-10

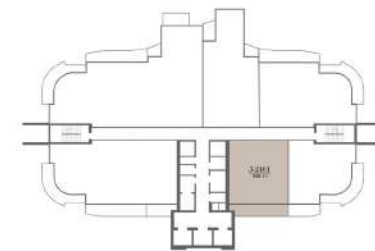


No. of BR	1
Total Area	1074 Sq ft *

(*)Starting from



T2 - LEVEL 23



T2 - LEVEL 24

Disclaimer: Dimensions, apartment areas & layouts are indicative and may differ slightly during subsequent design development stages. Furniture shown is for illustration purpose only.

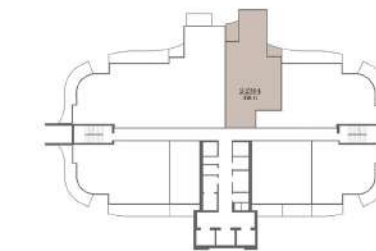
1 BEDROOM

TYPE 1BR-11



No. of BR	1
Total Area	1266 Sq ft *

(*)Starting from



T2 - LEVEL 23

Disclaimer: Dimensions, apartment areas & layouts are indicative and may differ slightly during subsequent design development stages. Furniture shown is for illustration purpose only.

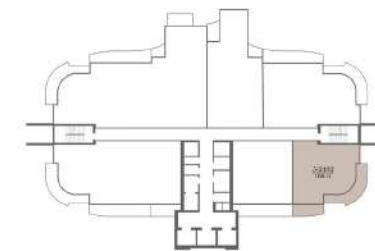
1 BEDROOM

TYPE 1BR-12



No. of BR	1
Total Area	1078 Sq ft *

(*)Starting from



T2 - LEVEL 24

Disclaimer: Dimensions, apartment areas & layouts are indicative and may differ slightly during subsequent design development stages. Furniture shown is for illustration purpose only.

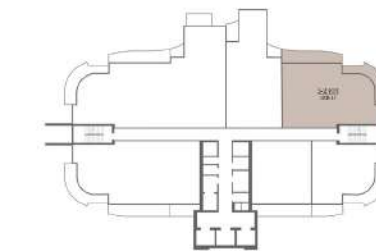
1 BEDROOM

TYPE 1BR-13



No. of BR	1
Total Area	1661 Sq ft *

(*)Starting from



T2 - LEVEL 24

Disclaimer: Dimensions, apartment areas & layouts are indicative and may differ slightly during subsequent design development stages. Furniture shown is for illustration purpose only.

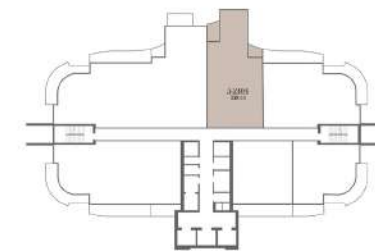
1 BEDROOM

TYPE 1BR-14



No. of BR	1
Total Area	1380 Sq ft *

(*)Starting from



T2 - LEVEL 24

Disclaimer: Dimensions, apartment areas & layouts are indicative and may differ slightly during subsequent design development stages. Furniture shown is for illustration purpose only.

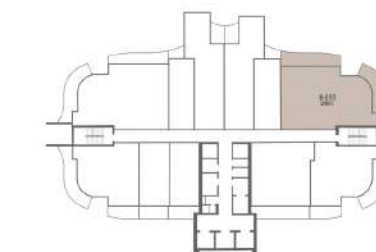
2 BEDROOM

TYPE 2BR-1

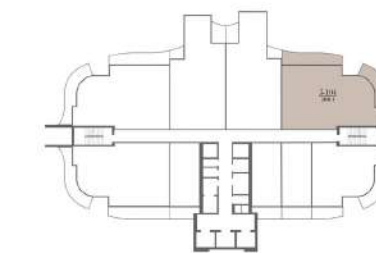


No. of BR	2
Total Area	1644 Sq ft *

(*)Starting from



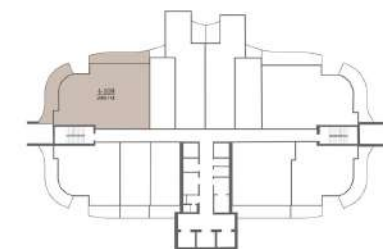
T1 - LEVEL 1 - 24



T2 - LEVEL 1 - 21

Disclaimer: Dimensions, apartment areas & layouts are indicative and may differ slightly during subsequent design development stages. Furniture shown is for illustration purpose only.

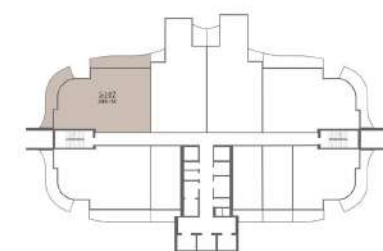
2 BEDROOM TYPE 2BR-1M



T1 - LEVEL 1 - 24

No. of BR	2
Total Area	1624 Sq ft *

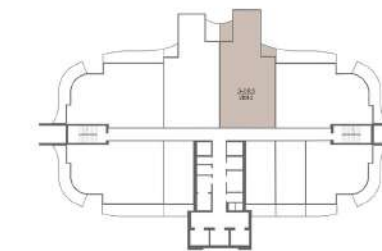
(*)Starting from



T2 - LEVEL 1 - 21

Disclaimer: Dimensions, apartment areas & layouts are indicative and may differ slightly during subsequent design development stages. Furniture shown is for illustration purpose only.

2 BEDROOM TYPE 2BR-2



T2 - LEVEL 1 - 21

No. of BR	2
Total Area	1346 Sq ft *

(*)Starting from

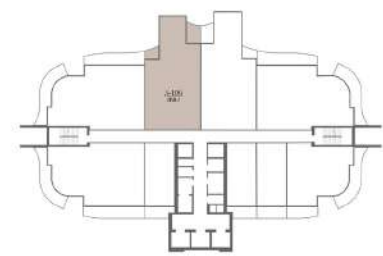
Disclaimer: Dimensions, apartment areas & layouts are indicative and may differ slightly during subsequent design development stages. Furniture shown is for illustration purpose only.

2 BEDROOM TYPE 2BR-3



No. of BR	2
Total Area	1319 Sq ft *

(*Starting from



T2 - LEVEL 1 - 21

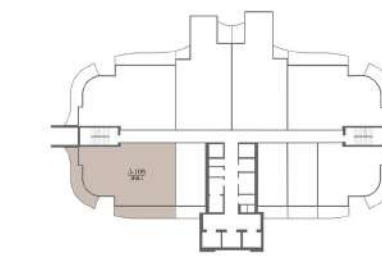
Disclaimer: Dimensions, apartment areas & layouts are indicative and may differ slightly during subsequent design development stages. Furniture shown is for illustration purpose only.

2 BEDROOM TYPE 2BR-4



No. of BR	2
Total Area	1628 Sq ft *

(*Starting from



T2 - LEVEL 1 - 21

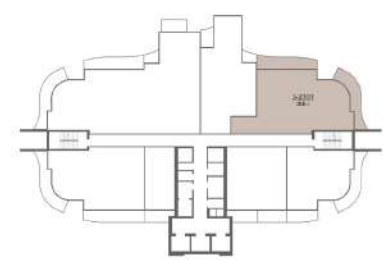
Disclaimer: Dimensions, apartment areas & layouts are indicative and may differ slightly during subsequent design development stages. Furniture shown is for illustration purpose only.

2 BEDROOM TYPE 2BR-5



No. of BR	2
Total Area	1690 Sq ft *

(*)Starting from



T2 - LEVEL 23

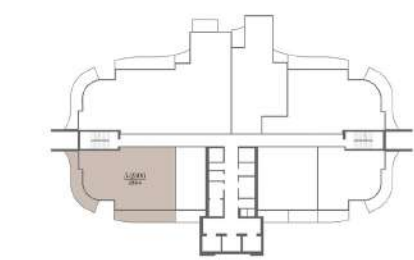
Disclaimer: Dimensions, apartment areas & layouts are indicative and may differ slightly during subsequent design development stages. Furniture shown is for illustration purpose only.

2 BEDROOM TYPE 2BR-6



No. of BR	2
Total Area	1667 Sq ft *

(*)Starting from



T2 - LEVEL 23

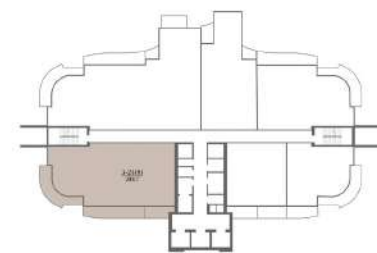
Disclaimer: Dimensions, apartment areas & layouts are indicative and may differ slightly during subsequent design development stages. Furniture shown is for illustration purpose only.

2 BEDROOM TYPE 2BR-7



No. of BR	2
Total Area	2223 Sq ft *

(*)Starting from



T2 - LEVEL 24

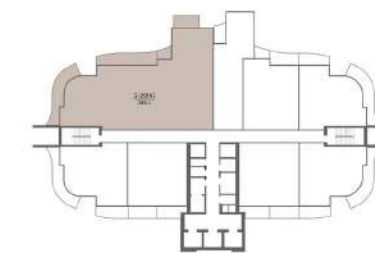
Disclaimer: Dimensions, apartment areas & layouts are indicative and may differ slightly during subsequent design development stages. Furniture shown is for illustration purpose only.

3 BEDROOM TYPE 3BR-1



No. of BR	3
Total Area	3052 Sq ft *

(*)Starting from



T2 - LEVEL 22

Disclaimer: Dimensions, apartment areas & layouts are indicative and may differ slightly during subsequent design development stages. Furniture shown is for illustration purpose only.

TOWNHOUSE

TYPE TH-1M



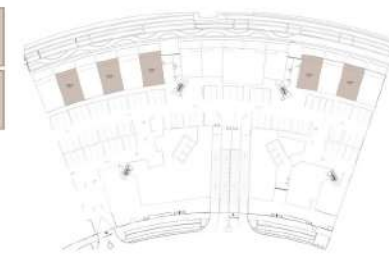
LOWER FLOOR



UPPER FLOOR

No. of BR	2
Total Area	1927 Sq ft *

(*)Starting from



GROUND LEVEL-LOWER



PODIUM LEVEL-UPPER

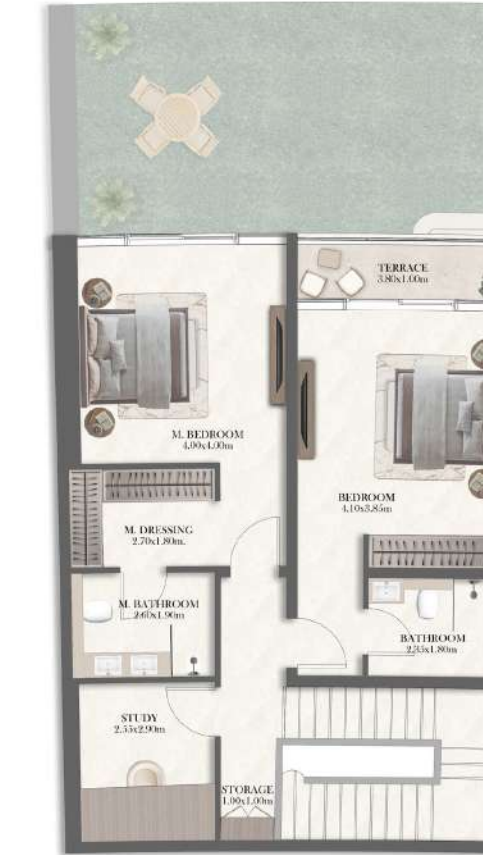
Disclaimer: Dimensions, apartment areas & layouts are indicative and may differ slightly during subsequent design development stages. Furniture shown is for illustration purpose only.

TOWNHOUSE

TYPE TH-2



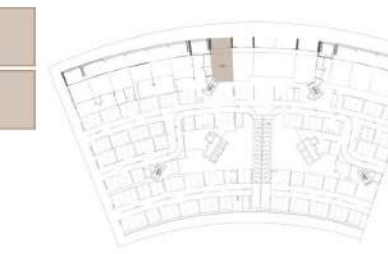
LOWER FLOOR



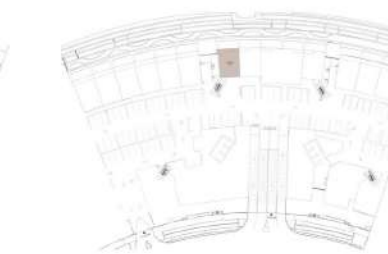
UPPER FLOOR

No. of BR	2
Total Area	2283 Sq ft *

(*)Starting from



PROMENADE LEVEL-LOWER



GROUND LEVEL-UPPER

Disclaimer: Dimensions, apartment areas & layouts are indicative and may differ slightly during subsequent design development stages. Furniture shown is for illustration purpose only.

TOWNHOUSE

TYPE TH-2M



LOWER FLOOR

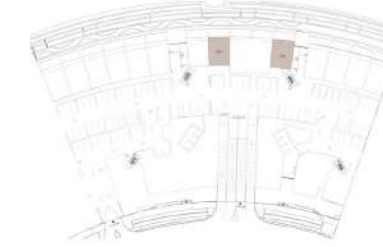
UPPER FLOOR

No. of BR	2
Total Area	2244 Sq ft *

(*)Starting from



PROMENADE LEVEL-LOWER



GROUND LEVEL-UPPER

Disclaimer: Dimensions, apartment areas & layouts are indicative and may differ slightly during subsequent design development stages. Furniture shown is for illustration purpose only.

TOWNHOUSE

TYPE TH-3



LOWER FLOOR

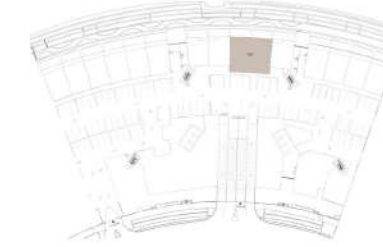
UPPER FLOOR

No. of BR	4
Total Area	4950 Sq ft *

(*)Starting from



PROMENADE LEVEL-LOWER



GROUND LEVEL-UPPER

Disclaimer: Dimensions, apartment areas & layouts are indicative and may differ slightly during subsequent design development stages. Furniture shown is for illustration purpose only.



Royal Development Holding is a forward-looking real estate holding company headquartered in the UAE. As part of Emirates Stallions Group (ADX: ESG) under the International Holding Company (IHC), Royal Development Holding builds upon the robust heritage, proven expertise, and global footprint of its subsidiary, Royal Development Company.

Through this solid foundation, Royal Development Holding integrates Royal Development Company's legacy of managing more than 60 transformative projects across 15+ countries and AED 10.2 billion in sales, into its own mandate to shape the future of real estate. Boasting a team of over 100 professionals from diverse international backgrounds, Royal Development Company provides end-to-end solutions covering Development Management, Hospitality Development & Strategy, Investment Property & Finance Management, and Sales, Marketing and CRM.

In addition to Royal Development Company, Royal Development Holding has several other companies under its umbrella that expand its offering in the real estate industry. This includes Royal Architects Project Management (RAPM) - a leading firm specialising in architecture and project management, Abu Dhabi Land General Contracting L.L.C - experts in construction management, marine works, and infrastructure since 2006, ESG Hospitality - a reputable leader in both regional and global hospitality, Royal Dunes Real Estate Development - a prominent Dubai-based construction company, Royal Harbor - a boutique real estate developer, and Royal Luxury Hotel Management - specialising in the management of luxury hotels in the UAE and beyond.

With innovation, adaptability, and design excellence at its core, Royal Development Holding curates lifestyle-centric communities that go beyond construction to deliver value, well-being, and long-term impact, with a promise to evolve spaces and elevate lives. It redefines urban living across local and international markets, positioning itself as a trusted force in sustainable development and visionary growth.

For more information about Royal Development Holding, please visit www.rdhuae.com

Toll Free 800 219

radissonresidences-alreem.com

Life in every mode

Radisson

RESIDENCES AL REEM ISLAND ABU DHABI



AN ESG COMPANY

1. For Promotional Materials Generally

1.1 MANGROVE LIVING REAL ESTATE LTD, being the current owner and developer of Radisson Residences Al Reem Island Abu Dhabi, is solely responsible for the development, marketing, and sale of the Residences. The Residences are not owned, developed, or sold by Radisson or any of their affiliates (collectively, "Radisson"). There exists no joint venture, partnership, ownership, or similar relationship between MANGROVE LIVING REAL ESTATE LTD and Radisson.

1.2 MANGROVE LIVING REAL ESTATE LTD, at its sole discretion, may make alterations to the internal design of the Residences at Radisson Residences Al Reem Island Abu Dhabi (the "Residential Project", and individually a "Residence") that may differ from that shown in this document and/or represented in any other marketing materials and/or displays, including, but without limitation, to any advertising, marketing and/or sales concepts, programs or materials, or any other content to be posted on any website maintained by MANGROVE LIVING REAL ESTATE LTD. Residence designs and materials presented herein are representative of the intended end product. Actual constructed Residences may vary in materials and furnishings.

1.3 The usage of the name "Radisson" and related marks is strictly governed by certain agreements between MANGROVE LIVING REAL ESTATE LTD and Radisson. The "Radisson" name, design, logomarks, trademarks, and related marks are the exclusive properties of Radisson. The purchasers or owners of the Residences shall acquire no interest of any kind or nature in the "Radisson" brand, logomarks, or related trademarks and may use the "Radisson" name solely for the limited purpose of identifying the location of the Residences. Radisson's role as licensor of the "Radisson" brand for the Residential Project is not in perpetuity and may end at any time without notice to or consent of purchasers or owners of the Residences, in which event the "Radisson" brand will be disassociated from the Residential Project and the Residences, and no reference to the "Radisson" brand shall be applied to the Residential Project or the Residences.

1.4 In addition, by consenting to MANGROVE LIVING REAL ESTATE LTD's limited use of Radisson's trade and logo marks, Radisson does not make any representation or warranty, express or implied, as to the accuracy, currency, reliability, or completeness of the information in this document, and Radisson is not responsible or liable in any way whatsoever for any claim, loss, or damage arising out of or related to the information set out in this document.

Disclaimer:

1. For Promotional Materials Generally

1.1 Royal Development Holding, being the current owner and developer of Radisson Residences Al Reem Island Abu Dhabi, is solely responsible for the development, marketing, and sale of the Residences. The Residences are not owned, developed, or sold by Radisson or any of their affiliates (collectively, "Radisson"). There exists no joint venture, partnership, ownership, or similar relationship between Royal Development Holding and Radisson.

1.2 Royal Development Holding, at its sole discretion, may make alterations to the internal design of the Residences at Radisson Residences Al Reem Island Abu Dhabi (the "Residential Project", and individually a "Residence") that may differ from that shown in this document and/or represented in any other marketing materials and/or displays, including, but without limitation, to any advertising, marketing and/or sales concepts, programs or materials, or any other content to be posted on any website maintained by Royal Development Holding. Residence designs and materials presented herein are representative of the intended end product. Actual constructed Residences may vary in materials and furnishings.

1.3 The usage of the name "Radisson" and related marks is strictly governed by certain agreements between Royal Development Holding and Radisson. The "Radisson" name, design, logomarks, trademarks, and related marks are the exclusive properties of Radisson. The purchasers or owners of the Residences shall acquire no interest of any kind or nature in the "Radisson" brand, logomarks, or related trademarks and may use the "Radisson" name solely for the limited purpose of identifying the location of the Residences. Radisson's role as licensor of the "Radisson" brand for the Residential Project is not in perpetuity and may end at any time without notice to or consent of purchasers or owners of the Residences, in which event the "Radisson" brand will be disassociated from the Residential Project and the Residences, and no reference to the "Radisson" brand shall be applied to the Residential Project or the Residences.

1.4 In addition, by consenting to Royal Development Holding's limited use of Radisson's trade and logo marks, Radisson does not make any representation or warranty, express or implied, as to the accuracy, currency, reliability, or completeness of the information in this document, and Radisson is not responsible or liable in any way whatsoever for any claim, loss, or damage arising out of or related to the information set out in this document.

Life in every mode



ROYAL

DEVELOPMENT HOLDING

AN ESG COMPANY