

VIDA

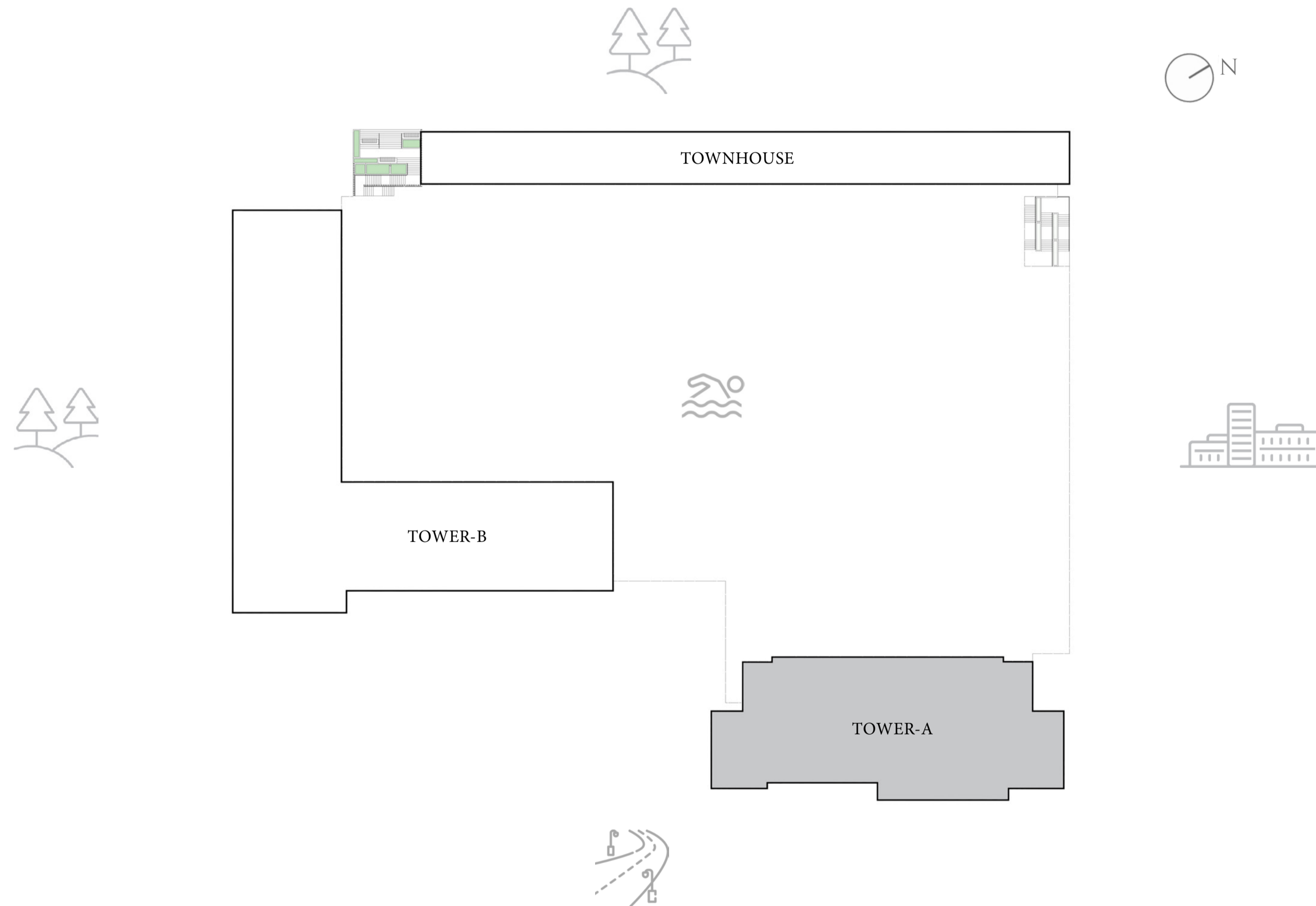
RESIDENCES
HILLSIDE

FLOOR PLANS | TOWER A

EMAAR

MASTER PLAN

TOWER A



VIDA

RESIDENCES HILLSIDE

TOWER A

1BEDROOM TYPE A

UNITS 102, 202, 302, 402, 502, 602, 702, 802, 902, 1002, 1102,
1202, 1302, 1402, 1502, 1602, 1702, 1802, 1902, 2002

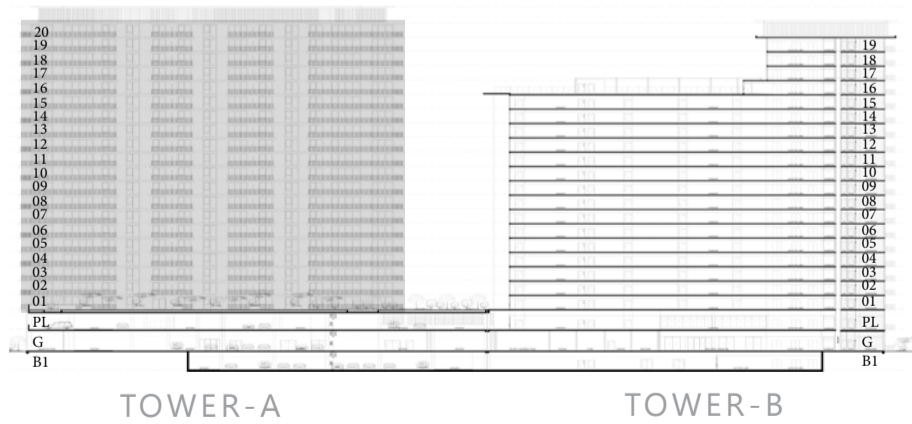
SUITE AREA	691.69	SQ.FT	64.26	SQ.M
BALCONY AREA	137.67	SQ.FT	12.79	SQ.M
TOTAL AREA	829.36	SQ.FT	77.05	SQ.M

UNITS 103, 203, 303, 403, 503, 603, 703, 803, 903, 1003, 1103,
1203, 1303, 1403, 1503, 1603, 1703, 1803, 1903, 2003

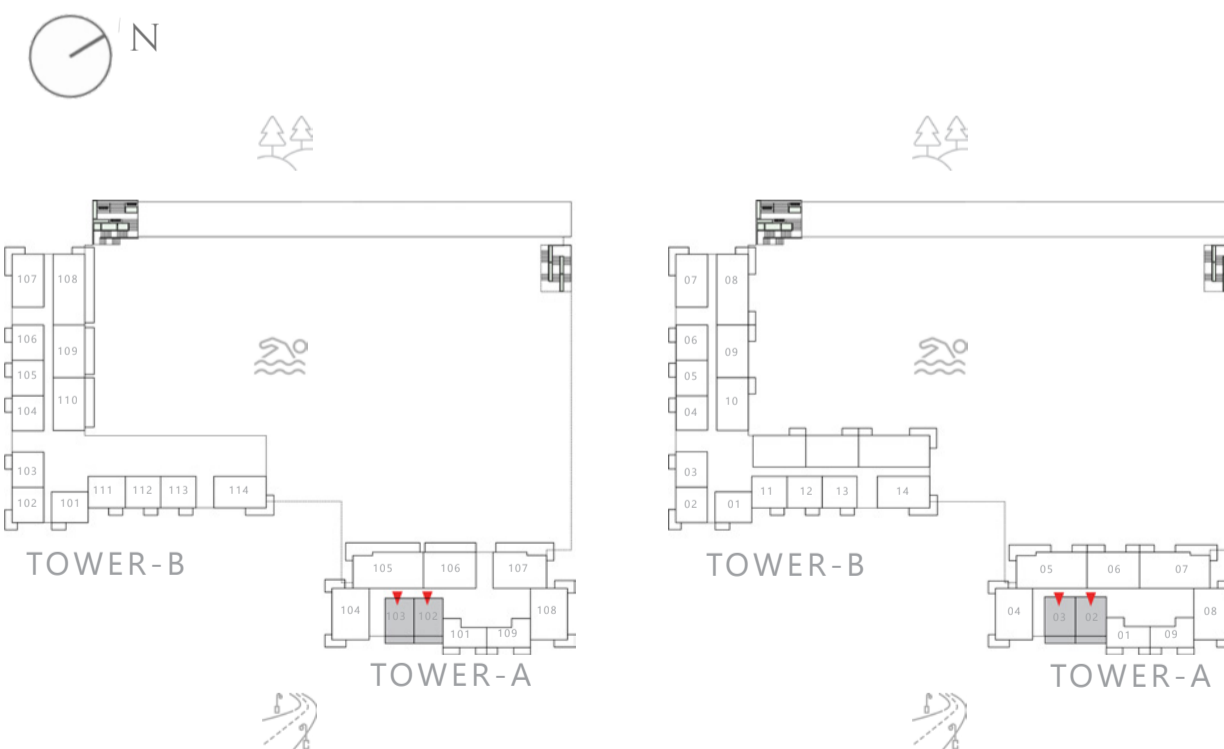
SUITE AREA	709.88	SQ.FT	65.95	SQ.M
BALCONY AREA	134.33	SQ.FT	12.48	SQ.M
TOTAL AREA	844.21	SQ.FT	78.43	SQ.M



KEY SECTION



KEYPLAN



LEVEL 1

LEVELS 2-20

FLOOR PLAN 1. All dimensions are in imperial and metric, and measured from finish to finish excluding construction tolerances. 2. All materials, dimensions, and drawings are approximate only. 3. Information is subject to change without notice, at developer's absolute discretion. 4. Actual area may vary from the stated area. 5. Drawings not to scale. 6. All images used are for illustrative purposes only and do not represent the actual size, features, specifications, fittings, and furnishings. 7. The developer reserves the right to make revisions / alterations, at its absolute discretion, without any liability whatsoever.

VIDA

RESIDENCES HILLSIDE

TOWER A

1BEDROOM TYPE B

UNIT P01

SUITE AREA	633.24	SQ.FT	58.83	SQ.M
BALCONY AREA	129.49	SQ.FT	12.03	SQ.M
TOTAL AREA	762.73	SQ.FT	70.86	SQ.M

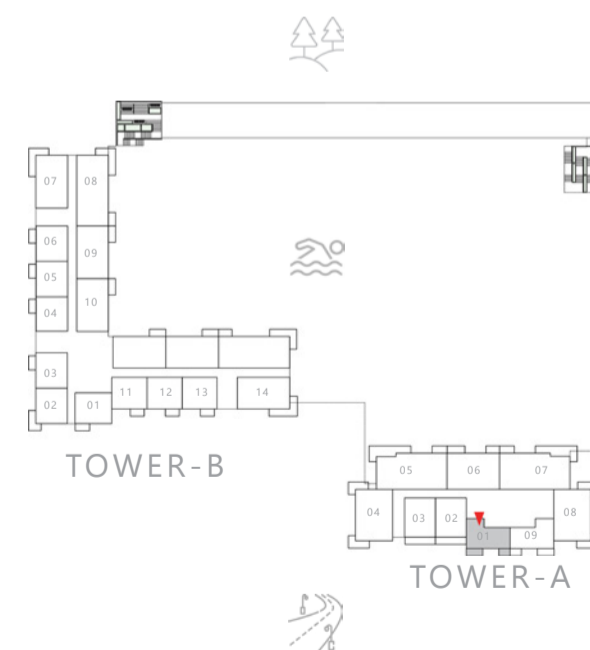
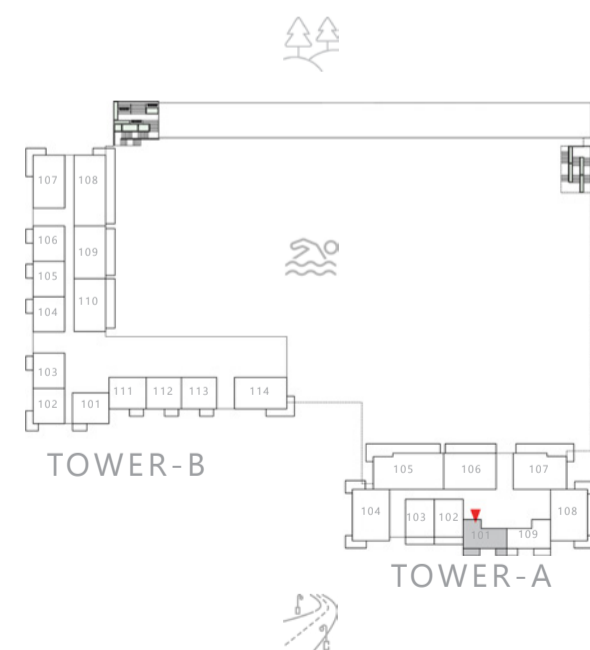
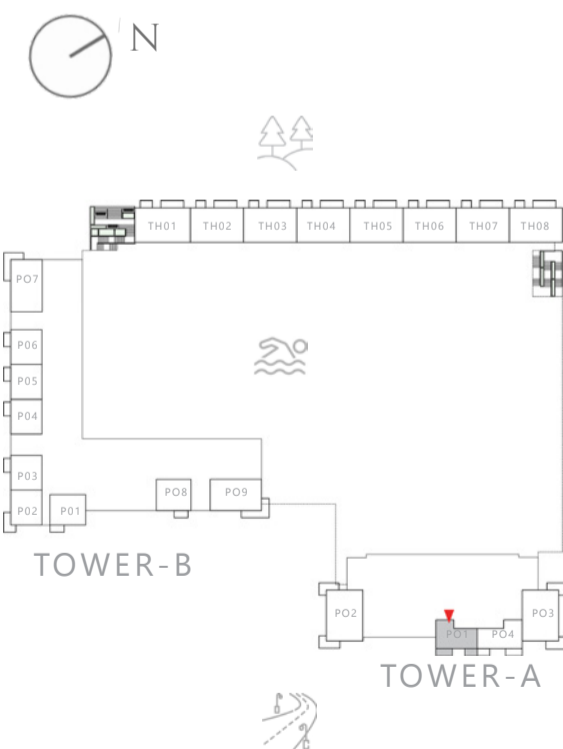
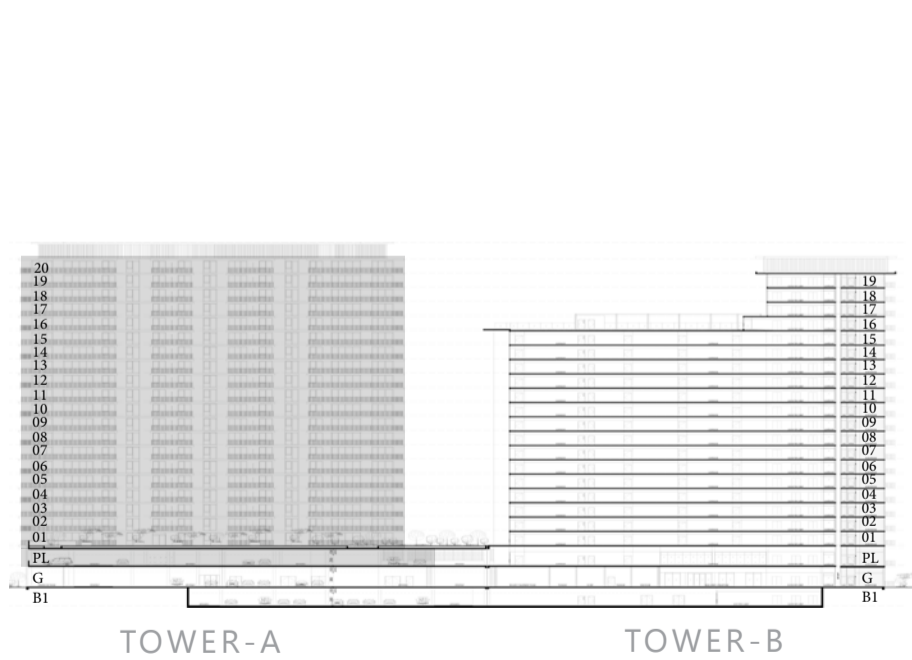
UNITS 101, 201, 301, 401, 501, 601, 701, 801, 901, 1001, 1101, 1201,
1301, 1401, 1501, 1601, 1701, 1801, 1901, 2001

SUITE AREA	627.64	SQ.FT	58.31	SQ.M
BALCONY AREA	129.17	SQ.FT	12.00	SQ.M
TOTAL AREA	756.81	SQ.FT	70.31	SQ.M



KEY SECTION

KEYPLAN



LEVEL PL

LEVEL 1

LEVELS 2-20

FLOOR PLAN 1. All dimensions are in imperial and metric, and measured from finish to finish excluding construction tolerances. 2. All materials, dimensions, and drawings are approximate only. 3. Information is subject to change without notice, at developer's absolute discretion. 4. Actual area may vary from the stated area. 5. Drawings not to scale. 6. All images used are for illustrative purposes only and do not represent the actual size, features, specifications, fittings, and furnishings. 7. The developer reserves the right to make revisions / alterations, at it's absolute discretion, without any liability whatsoever.

VIDA

RESIDENCES HILLSIDE

TOWER A 1 BEDROOM TYPE B.1

UNIT P04

SUITE AREA	639.48	SQ.FT	59.41	SQ.M
BALCONY AREA	130.24	SQ.FT	12.10	SQ.M
TOTAL AREA	769.72	SQ.FT	71.51	SQ.M

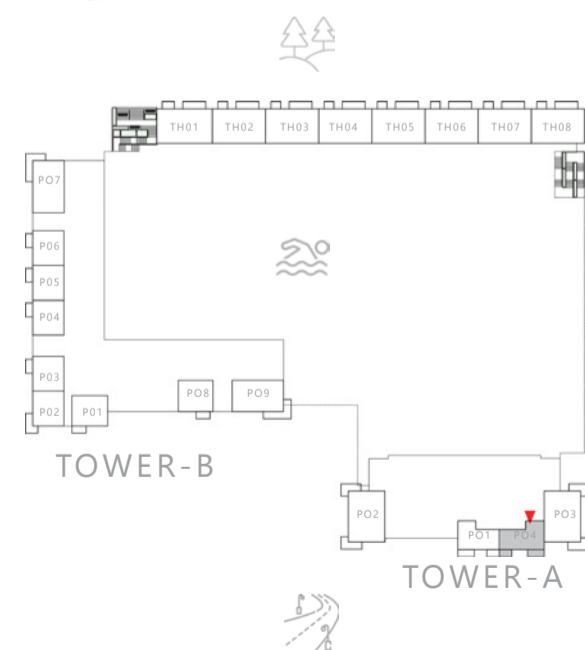
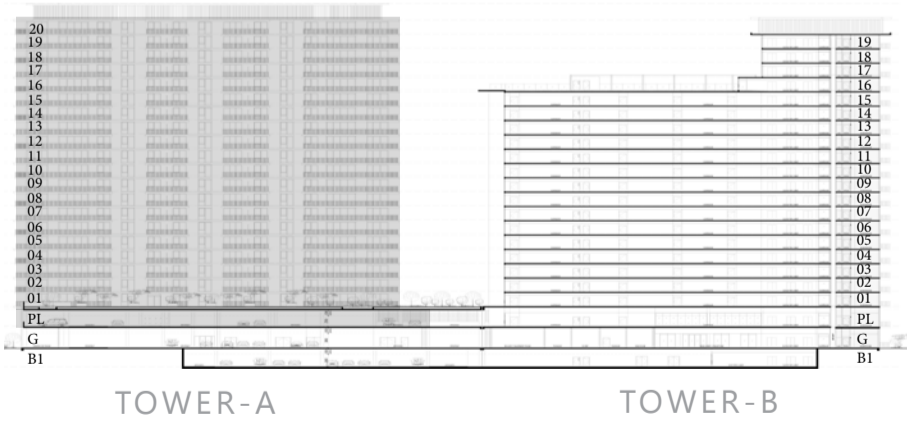
UNITS 109, 209, 309, 409, 509, 609, 709, 809, 909, 1009, 1109,
1209, 1309, 1409, 1509, 1609, 1709, 1809, 1909, 2009

SUITE AREA	633.46	SQ.FT	58.85	SQ.M
BALCONY AREA	130.57	SQ.FT	12.13	SQ.M
TOTAL AREA	764.03	SQ.FT	70.98	SQ.M

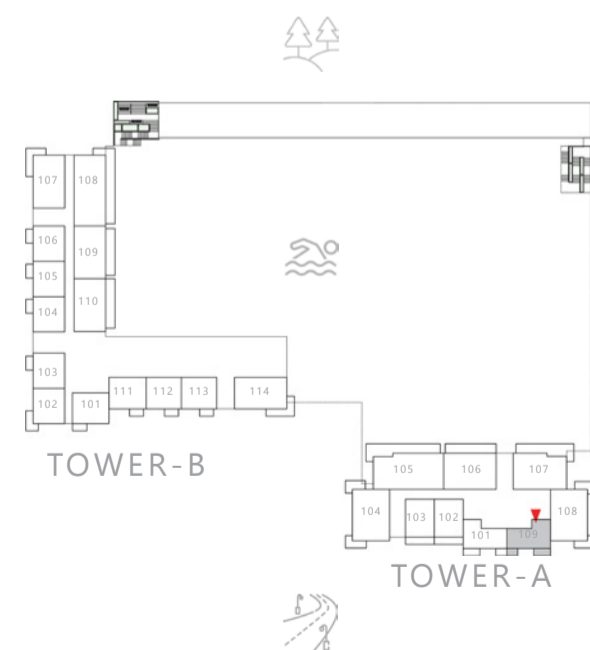


KEY SECTION

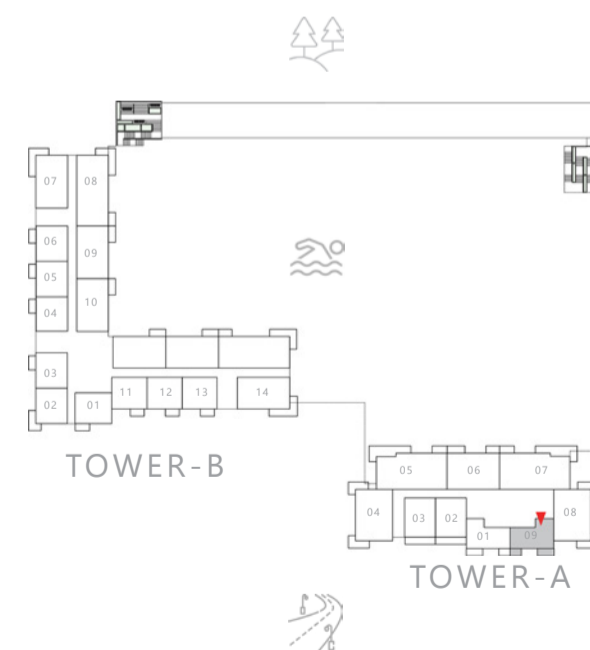
KEYPLAN



LEVEL PL



LEVEL 1



LEVELS 2-20

FLOOR PLAN 1. All dimensions are in imperial and metric, and measured from finish to finish excluding construction tolerances. 2. All materials, dimensions, and drawings are approximate only. 3. Information is subject to change without notice, at developer's absolute discretion. 4. Actual area may vary from the stated area. 5. Drawings not to scale. 6. All images used are for illustrative purposes only and do not represent the actual size, features, specifications, fittings, and furnishings. 7. The developer reserves the right to make revisions / alterations, at its absolute discretion, without any liability whatsoever.

VIDA

RESIDENCES HILLSIDE

TOWER A 2BEDROOM TYPE A

UNIT P02

SUITE AREA	1105.56 SQ.FT	102.71 SQ.M
BALCONY AREA	229.81 SQ.FT	21.35 SQ.M
TOTAL AREA	1335.37 SQ.FT	124.06 SQ.M

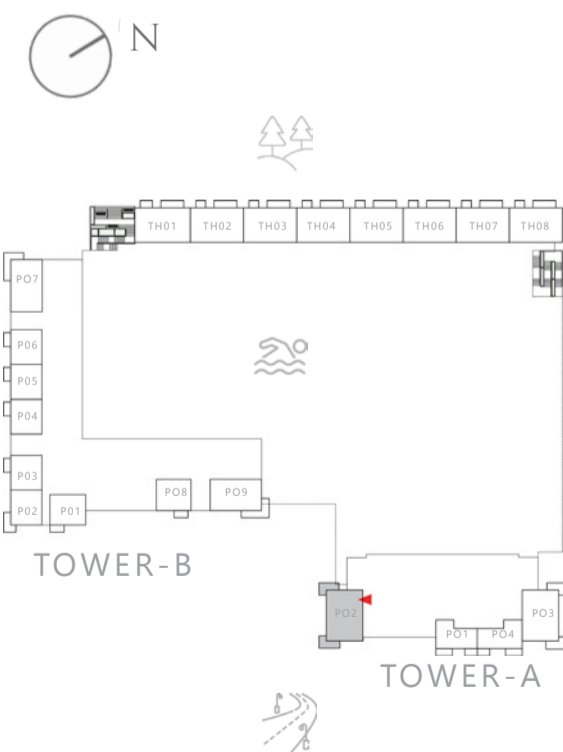
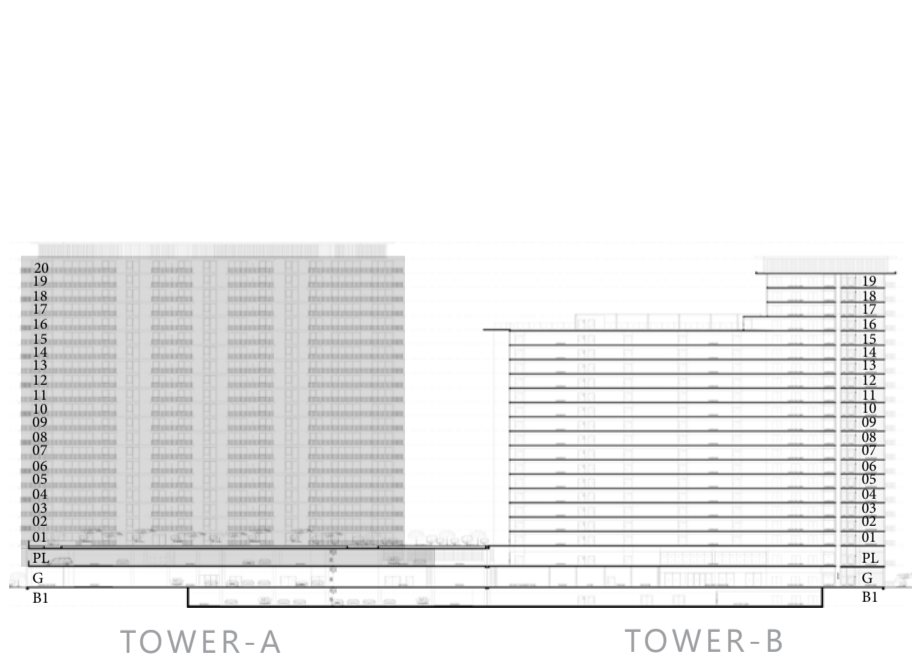
UNITS 104, 204, 304, 404, 504, 604, 704, 804, 904, 1004, 1104, 1204, 1304, 1404, 1504, 1604, 1704, 1804, 1904, 2004

SUITE AREA	1094.37 SQ.FT	101.67 SQ.M
BALCONY AREA	232.07 SQ.FT	21.56 SQ.M
TOTAL AREA	1326.44 SQ.FT	123.23 SQ.M

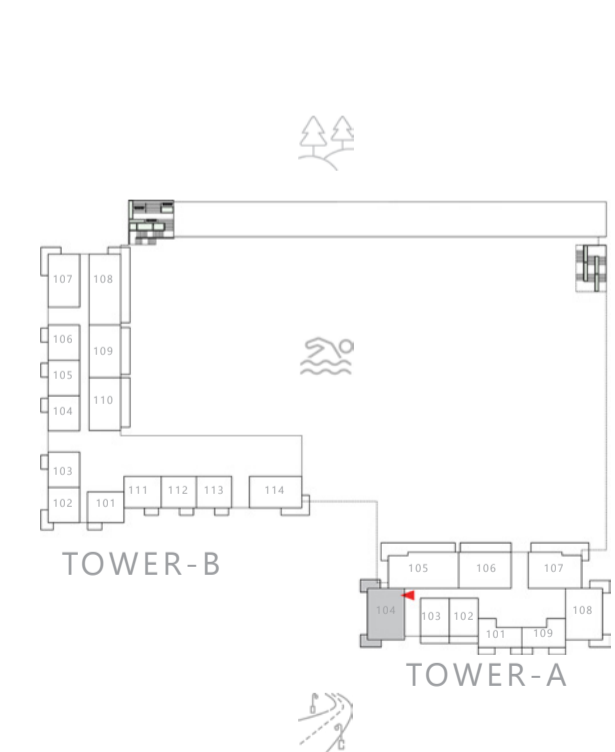


KEY SECTION

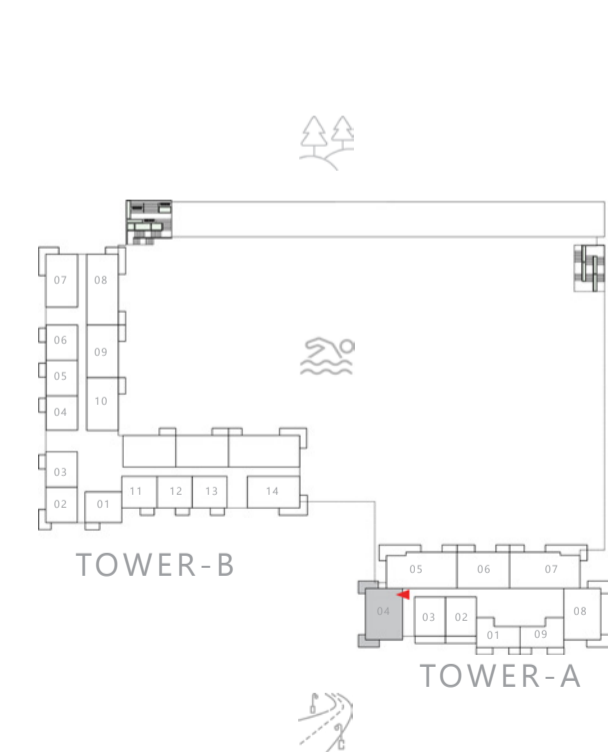
KEYPLAN



LEVEL PL



LEVEL 1



LEVELS 2-20

FLOOR PLAN 1. All dimensions are in imperial and metric, and measured from finish to finish excluding construction tolerances. 2. All materials, dimensions, and drawings are approximate only. 3. Information is subject to change without notice, at developer's absolute discretion. 4. Actual area may vary from the stated area. 5. Drawings not to scale. 6. All images used are for illustrative purposes only and do not represent the actual size, features, specifications, fittings, and furnishings. 7. The developer reserves the right to make revisions / alterations, at its absolute discretion, without any liability whatsoever.

VIDA

RESIDENCES HILLSIDE

TOWER A 2BEDROOM TYPE A.1

UNIT P03

SUITE AREA	1085.54 SQ.FT	100.85 SQ.M
BALCONY AREA	229.81 SQ.FT	21.35 SQ.M
TOTAL AREA	1315.35 SQ.FT	122.20 SQ.M

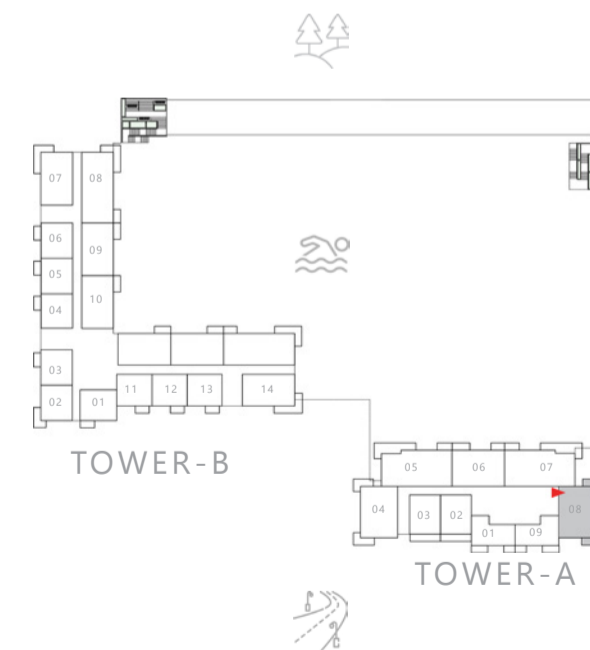
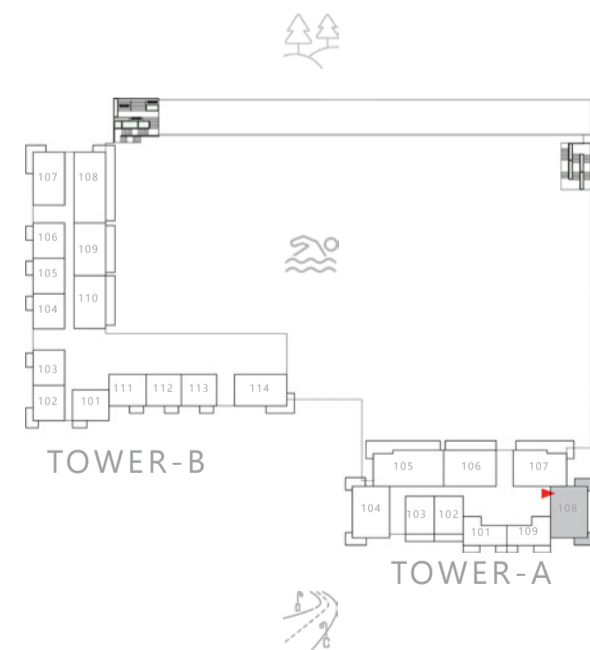
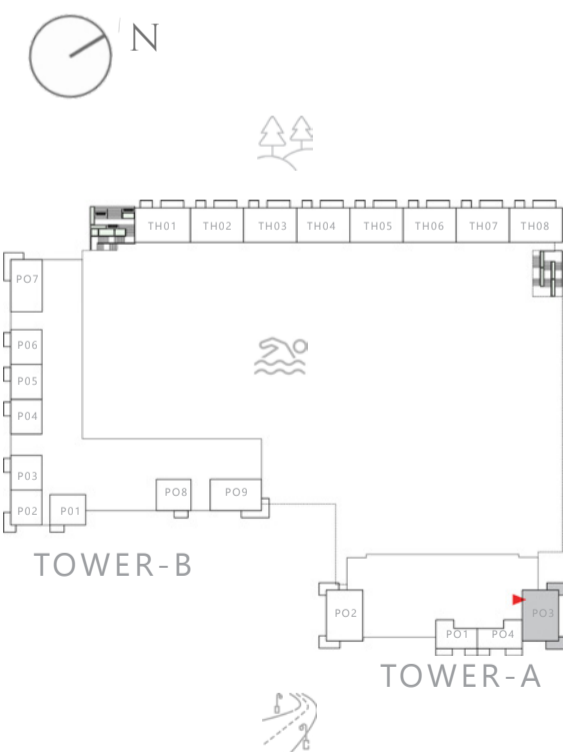
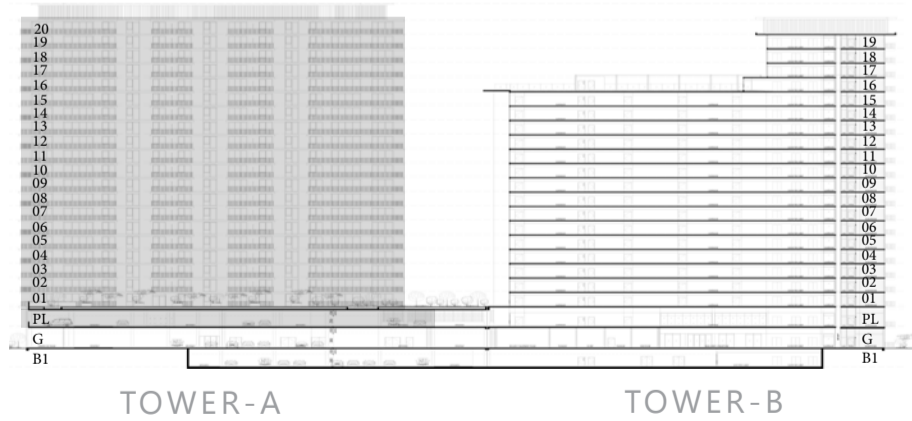
UNITS 108, 208, 308, 408, 508, 608, 708, 808, 908, 1008, 1108, 1208, 1308, 1408, 1508, 1608, 1708, 1808, 1908, 2008

SUITE AREA	1079.30 SQ.FT	100.27 SQ.M
BALCONY AREA	230.02 SQ.FT	21.37 SQ.M
TOTAL AREA	1309.32 SQ.FT	121.64 SQ.M



KEY SECTION

KEYPLAN



LEVEL PL

LEVEL 1

LEVELS 2-20

FLOOR PLAN 1. All dimensions are in imperial and metric, and measured from finish to finish excluding construction tolerances. 2. All materials, dimensions, and drawings are approximate only. 3. Information is subject to change without notice, at developer's absolute discretion. 4. Actual area may vary from the stated area. 5. Drawings not to scale. 6. All images used are for illustrative purposes only and do not represent the actual size, features, specifications, fittings, and furnishings. 7. The developer reserves the right to make revisions / alterations, at its absolute discretion, without any liability whatsoever.

VIDA

RESIDENCES HILLSIDE

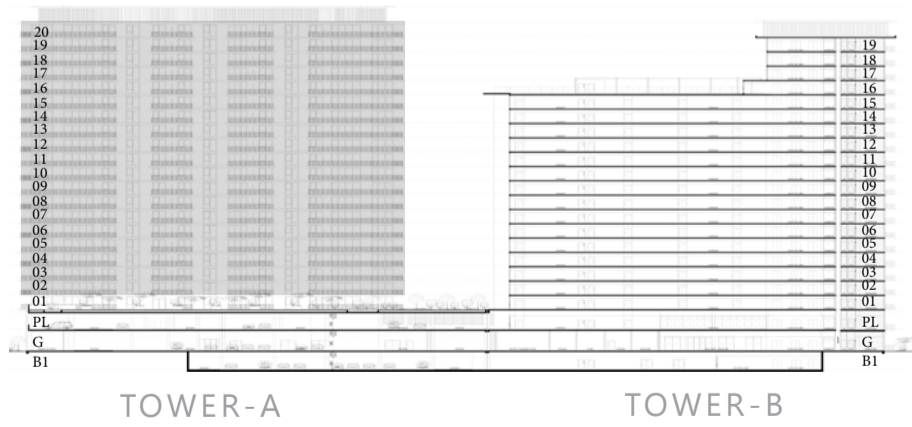
TOWER A 2BEDROOM TYPE B

UNITS 206, 306, 406, 506, 606, 706, 806, 906, 1006, 1106, 1206,
1306, 1406, 1506, 1606, 1706, 1806, 1906, 2006

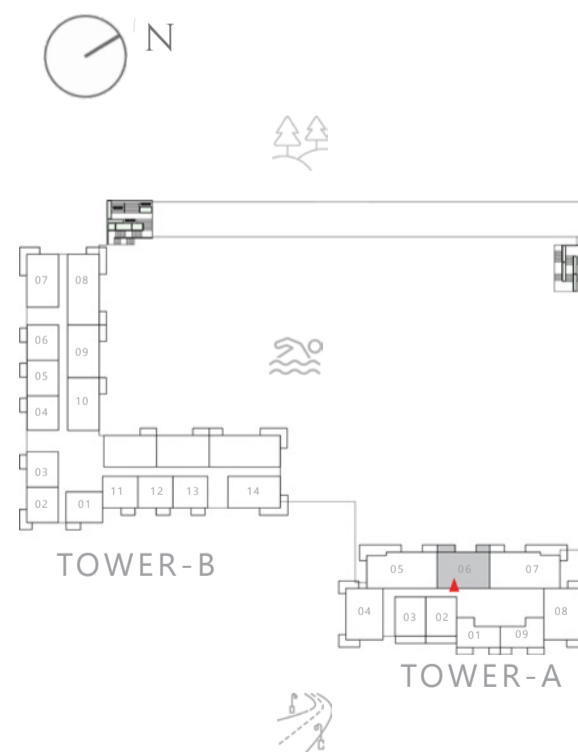
SUITE AREA	1110.94 SQ.FT	103.21 SQ.M
BALCONY AREA	139.50 SQ.FT	12.96 SQ.M
TOTAL AREA	1250.44 SQ.FT	116.17 SQ.M



KEY SECTION



KEYPLAN



LEVELS 2-20

FLOOR PLAN 1. All dimensions are in imperial and metric, and measured from finish to finish excluding construction tolerances. 2. All materials, dimensions, and drawings are approximate only. 3. Information is subject to change without notice, at developer's absolute discretion. 4. Actual area may vary from the stated area. 5. Drawings not to scale. 6. All images used are for illustrative purposes only and do not represent the actual size, features, specifications, fittings, and furnishings. 7. The developer reserves the right to make revisions / alterations, at its absolute discretion, without any liability whatsoever.

VIDA

RESIDENCES HILLSIDE

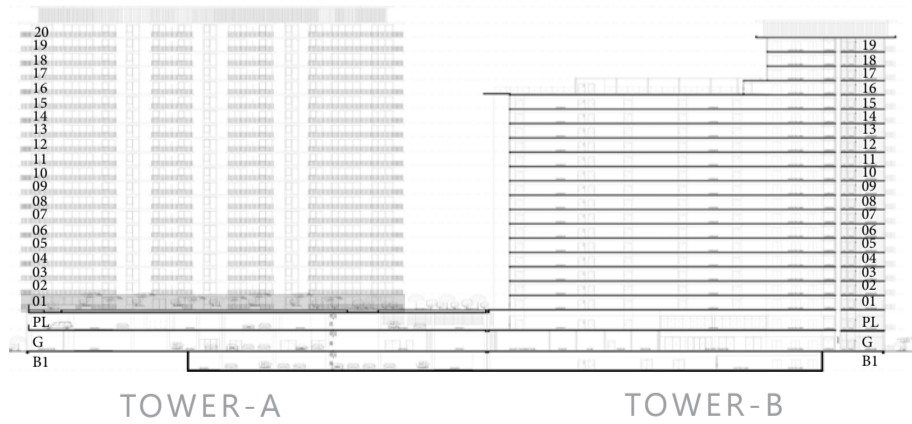
TOWER A 2BEDROOM TYPE B.1

UNIT 106

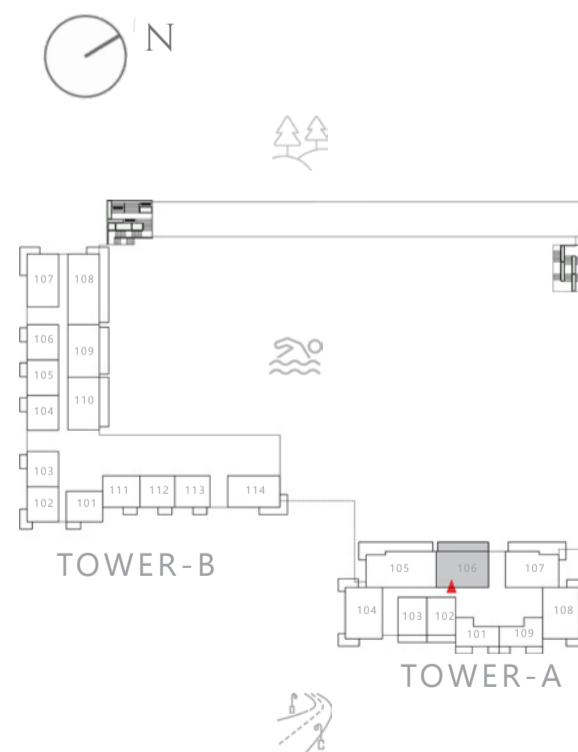
SUITE AREA	1111.05 SQ.FT	103.22 SQ.M
BALCONY AREA	293.75 SQ.FT	27.29 SQ.M
TOTAL AREA	1404.80 SQ.FT	130.51 SQ.M



KEY SECTION



KEYPLAN



LEVEL 1

FLOOR PLAN 1. All dimensions are in imperial and metric, and measured from finish to finish excluding construction tolerances. 2. All materials, dimensions, and drawings are approximate only. 3. Information is subject to change without notice, at developer's absolute discretion. 4. Actual area may vary from the stated area. 5. Drawings not to scale. 6. All images used are for illustrative purposes only and do not represent the actual size, features, specifications, fittings, and furnishings. 7. The developer reserves the right to make revisions / alterations, at it's absolute discretion, without any liability whatsoever.

VIDA

RESIDENCES HILLSIDE

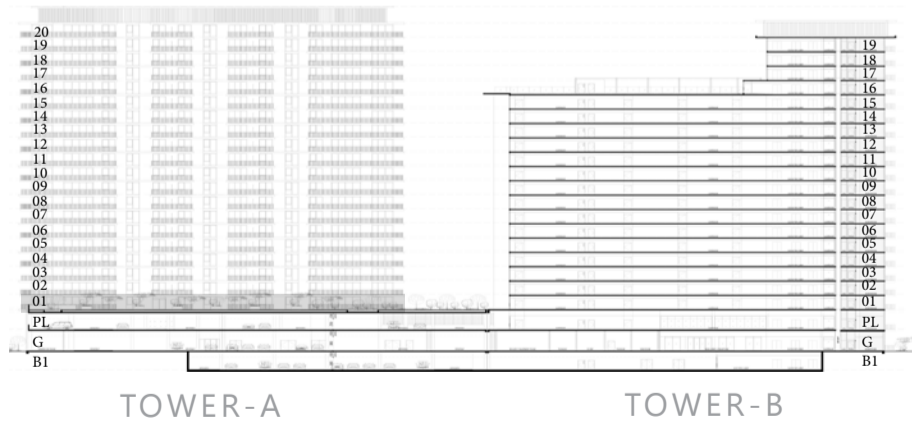
TOWER A 2BEDROOM TYPE C

UNIT 107

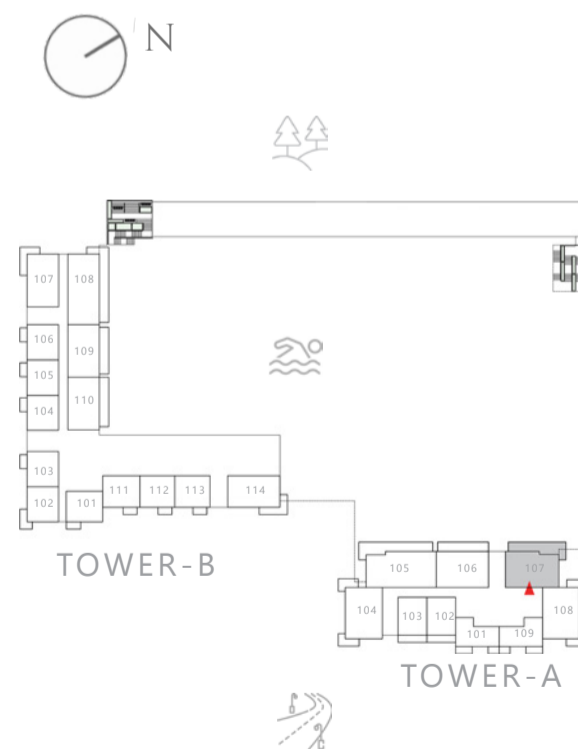
SUITE AREA	1131.83 SQ.FT	105.15 SQ.M
BALCONY AREA	410.32 SQ.FT	38.12 SQ.M
TOTAL AREA	1542.15 SQ.FT	143.27 SQ.M



KEY SECTION



KEYPLAN



LEVEL 1

FLOOR PLAN 1. All dimensions are in imperial and metric, and measured from finish to finish excluding construction tolerances. 2. All materials, dimensions, and drawings are approximate only. 3. Information is subject to change without notice, at developer's absolute discretion. 4. Actual area may vary from the stated area. 5. Drawings not to scale. 6. All images used are for illustrative purposes only and do not represent the actual size, features, specifications, fittings, and furnishings. 7. The developer reserves the right to make revisions / alterations, at it's absolute discretion, without any liability whatsoever.

VIDA

RESIDENCES HILLSIDE

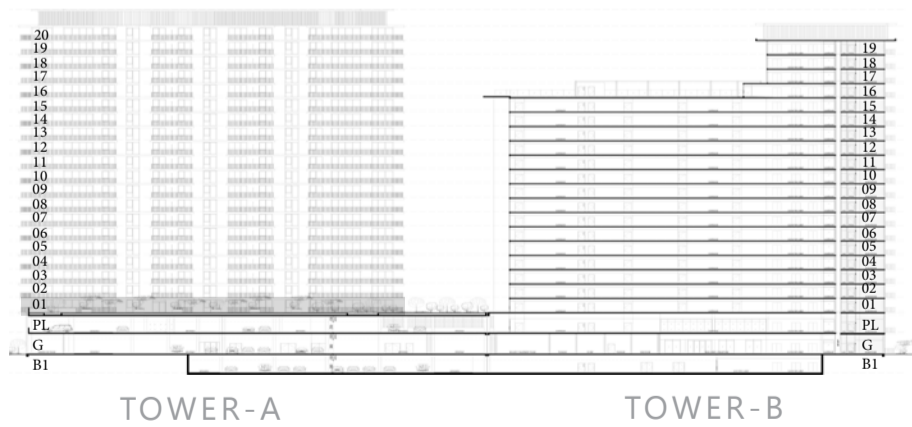
TOWER A 3BEDROOM TYPE A.1

UNIT 105

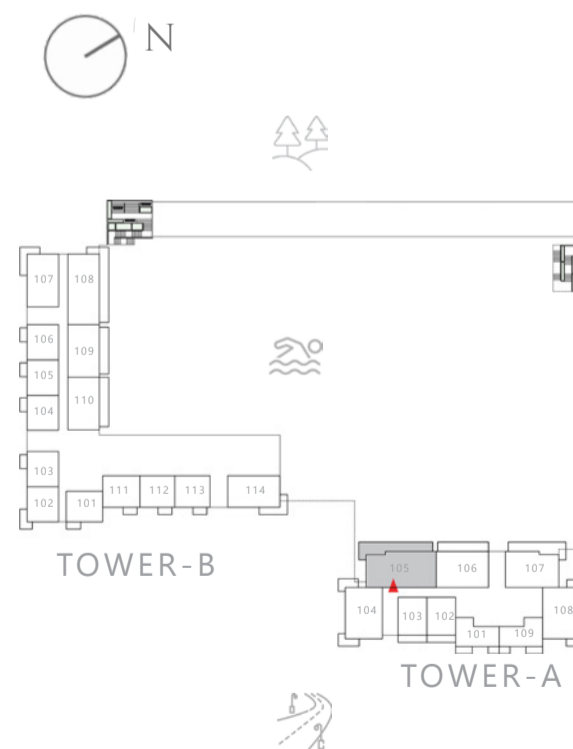
SUITE AREA	1497.26 SQ.FT	139.10 SQ.M
BALCONY AREA	504.18 SQ.FT	46.84 SQ.M
TOTAL AREA	2001.44 SQ.FT	185.94 SQ.M



KEY SECTION



KEYPLAN



LEVEL 1

FLOOR PLAN 1. All dimensions are in imperial and metric, and measured from finish to finish excluding construction tolerances. 2. All materials, dimensions, and drawings are approximate only. 3. Information is subject to change without notice, at developer's absolute discretion. 4. Actual area may vary from the stated area. 5. Drawings not to scale. 6. All images used are for illustrative purposes only and do not represent the actual size, features, specifications, fittings, and furnishings. 7. The developer reserves the right to make revisions / alterations, at it's absolute discretion, without any liability whatsoever.

VIDA

RESIDENCES HILLSIDE

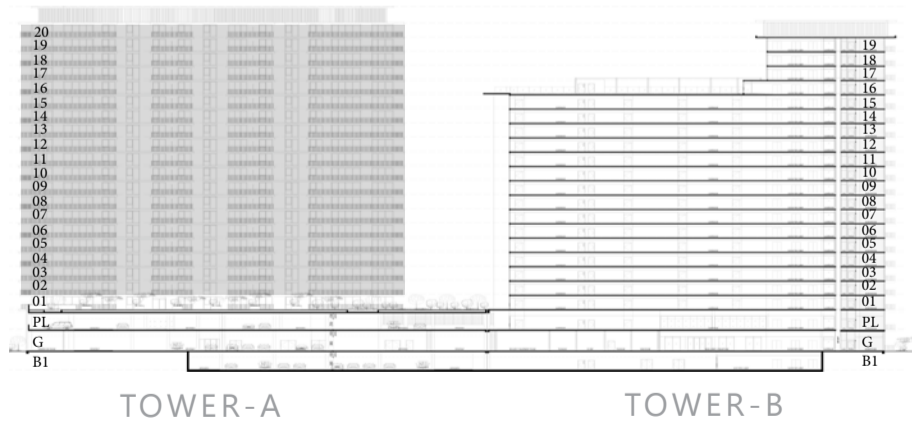
TOWER A 3BEDROOM TYPE A

UNITS 205, 305, 405, 505, 605, 705, 805, 905, 1005, 1105, 1205,
1305, 1405, 1505, 1605, 1705, 1805, 1905, 2005

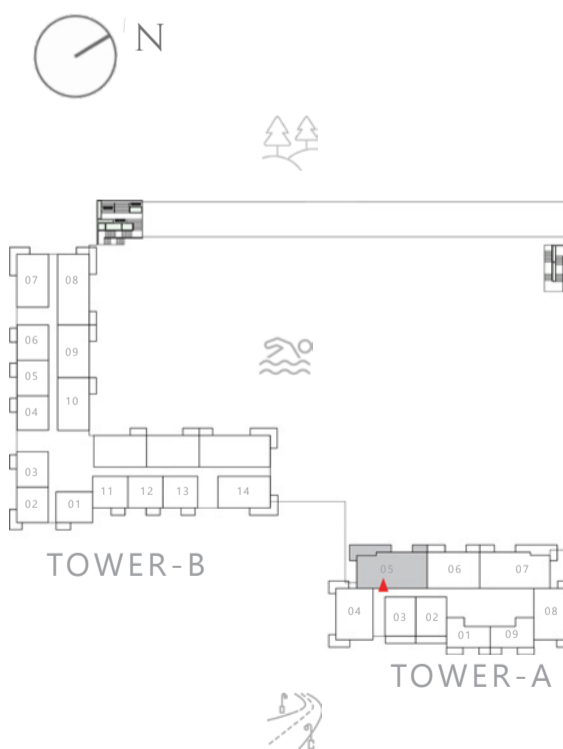
SUITE AREA	1497.26 SQ.FT	139.10 SQ.M
BALCONY AREA	329.48 SQ.FT	30.61 SQ.M
TOTAL AREA	1826.74 SQ.FT	169.71 SQ.M



KEY SECTION



KEYPLAN



LEVELS 2-20

FLOOR PLAN 1. All dimensions are in imperial and metric, and measured from finish to finish excluding construction tolerances. 2. All materials, dimensions, and drawings are approximate only. 3. Information is subject to change without notice, at developer's absolute discretion. 4. Actual area may vary from the stated area. 5. Drawings not to scale. 6. All images used are for illustrative purposes only and do not represent the actual size, features, specifications, fittings, and furnishings. 7. The developer reserves the right to make revisions / alterations, at its absolute discretion, without any liability whatsoever.

VIDA

RESIDENCES HILLSIDE

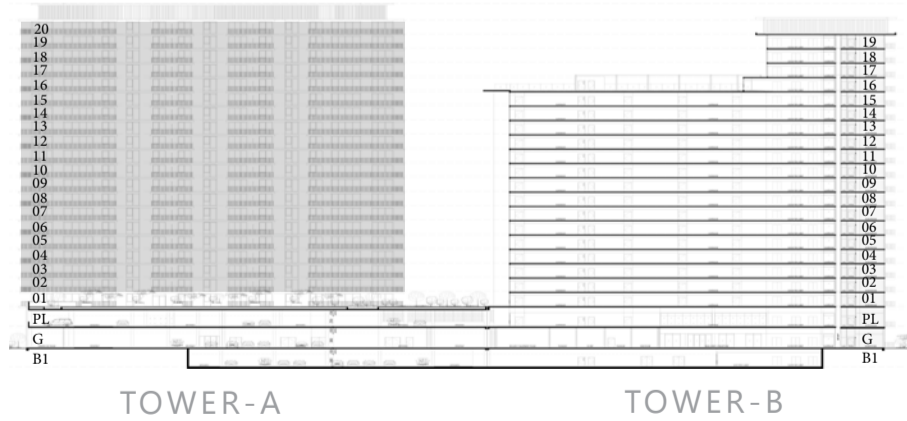
TOWER A 3BEDROOM TYPE A.2

UNITS 207, 307, 407, 507, 607, 707, 807, 907, 1007, 1107, 1207, 1307,
1407, 1507, 1607, 1707, 1807, 1907, 2007

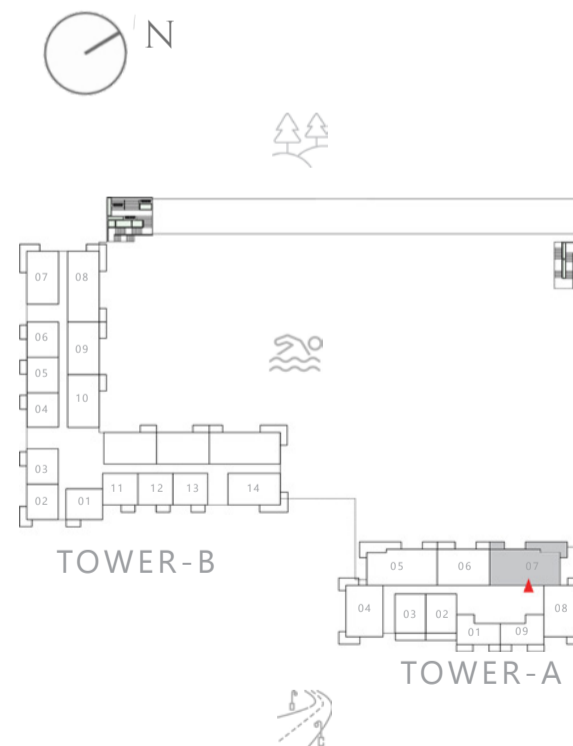
SUITE AREA	1498.44 SQ.FT	139.21 SQ.M
BALCONY AREA	328.51 SQ.FT	30.52 SQ.M
TOTAL AREA	1826.95 SQ.FT	169.73 SQ.M



KEY SECTION



KEYPLAN



LEVELS 2-20

FLOOR PLAN 1. All dimensions are in imperial and metric, and measured from finish to finish excluding construction tolerances. 2. All materials, dimensions, and drawings are approximate only. 3. Information is subject to change without notice, at developer's absolute discretion. 4. Actual area may vary from the stated area. 5. Drawings not to scale. 6. All images used are for illustrative purposes only and do not represent the actual size, features, specifications, fittings, and furnishings. 7. The developer reserves the right to make revisions / alterations, at its absolute discretion, without any liability whatsoever.

VIDA

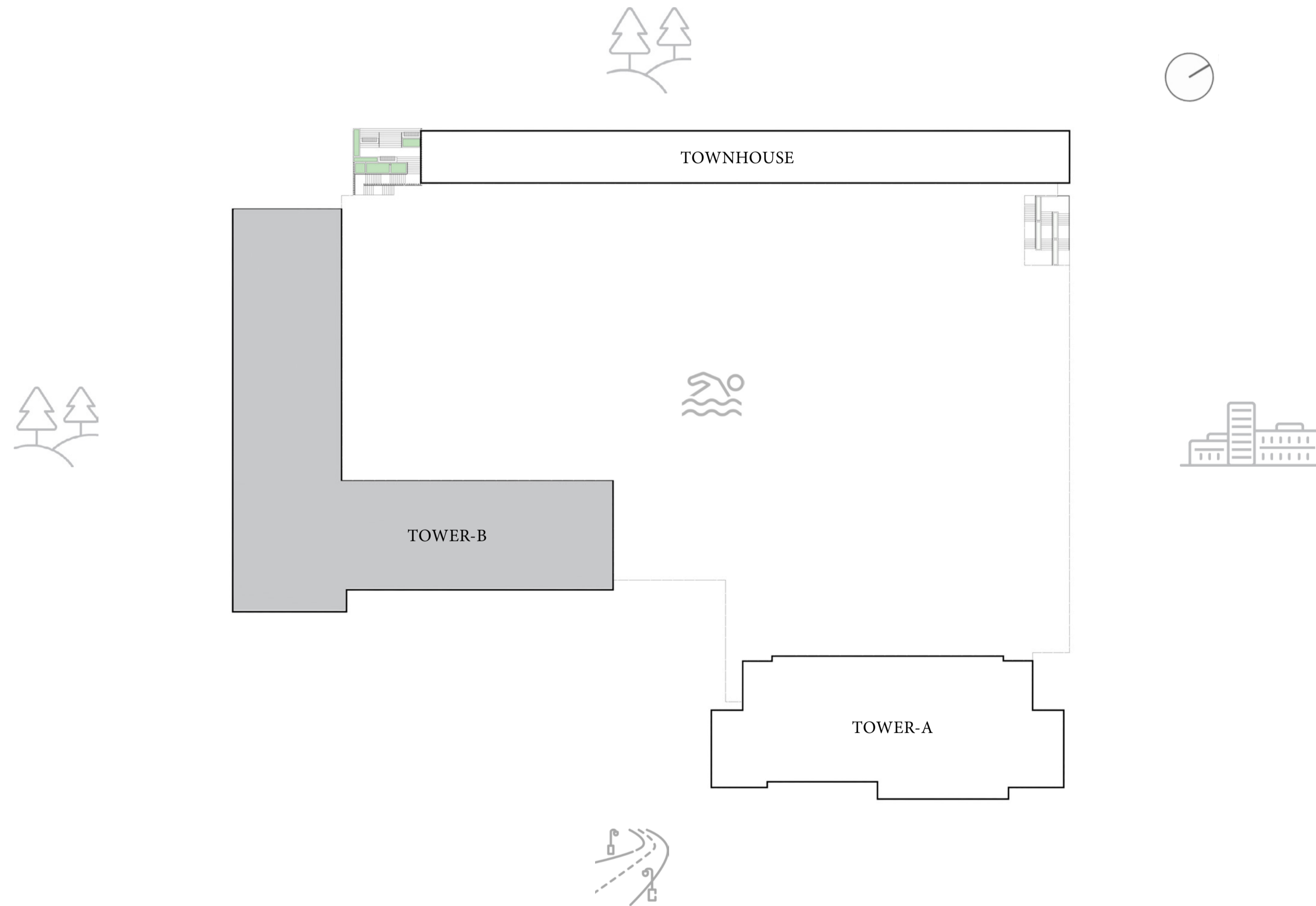
RESIDENCES
HILLSIDE

FLOOR PLANS | TOWER B

EMAAR

MASTER PLAN

TOWER B



VIDA

RESIDENCES HILLSIDE

TOWER B 1 BEDROOM TYPE C.2

UNITS G03, G04, G06

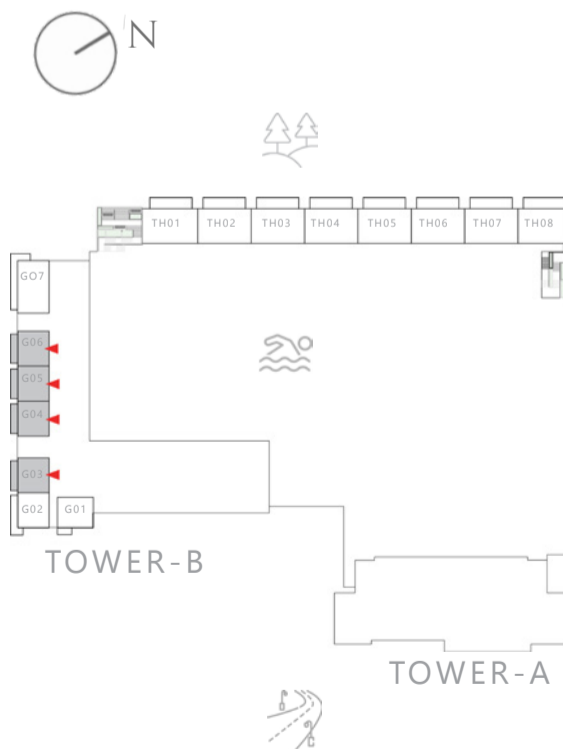
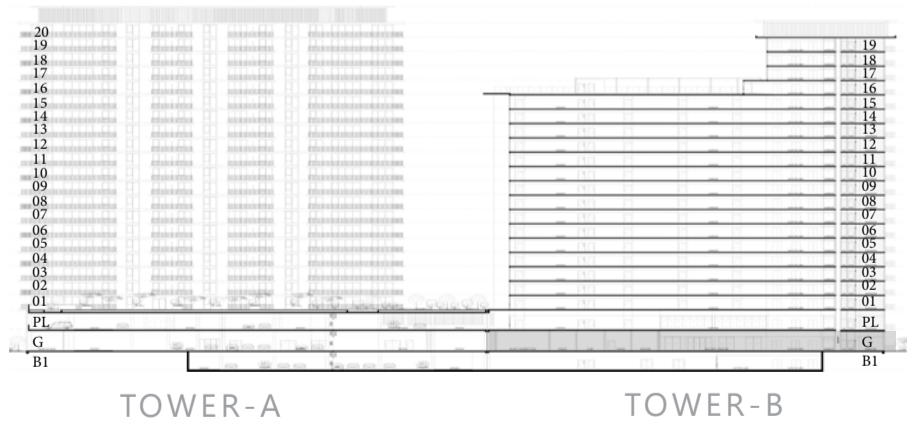
SUITE AREA	664.46 SQ.FT	61.73 SQ.M
BALCONY AREA	132.72 SQ.FT	12.33 SQ.M
TOTAL AREA	797.18 SQ.FT	74.06 SQ.M

UNIT G05

SUITE AREA	673.39 SQ.FT	62.56 SQ.M
BALCONY AREA	132.72 SQ.FT	12.33 SQ.M
TOTAL AREA	806.11 SQ.FT	74.89 SQ.M

KEY SECTION

KEYPLAN



GROUND FLOOR



FLOOR PLAN 1. All dimensions are in imperial and metric, and measured from finish to finish excluding construction tolerances. 2. All materials, dimensions, and drawings are approximate only. 3. Information is subject to change without notice, at developer's absolute discretion. 4. Actual area may vary from the stated area. 5. Drawings not to scale. 6. All images used are for illustrative purposes only and do not represent the actual size, features, specifications, fittings, and furnishings. 7. The developer reserves the right to make revisions / alterations, at it's absolute discretion, without any liability whatsoever.

VIDA

RESIDENCES HILLSIDE

TOWER B 1 BEDROOM TYPE C.1

UNITS P03, P04, P06, 104, 204, 304, 404, 504, 604, 704, 804, 904,
1004, 1104, 1204, 1304, 1404, 1504, 1604, 1704, 1804, 1904

SUITE AREA	664.35	SQ.FT	61.72	SQ.M
BALCONY AREA	61.78	SQ.FT	5.74	SQ.M
TOTAL AREA	726.13	SQ.FT	67.46	SQ.M

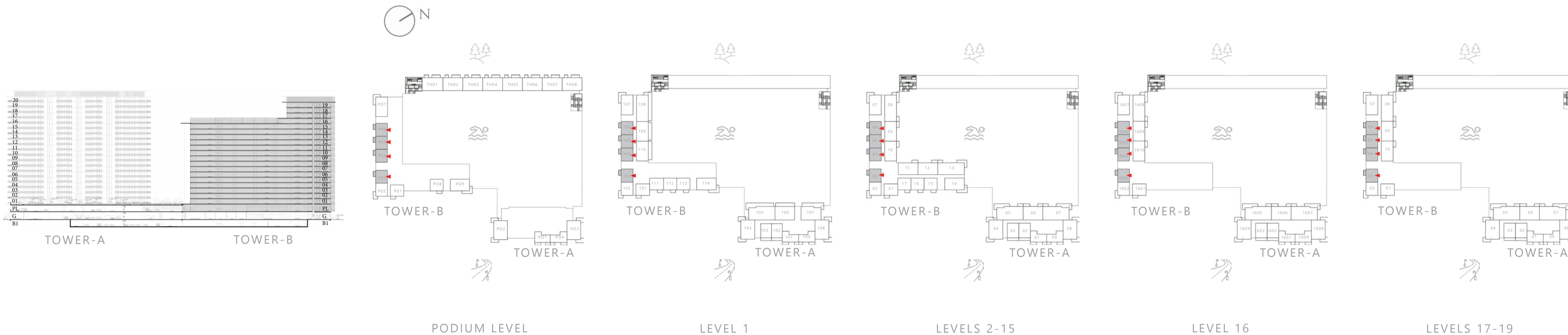
UNITS P05, 103, 105, 106, 203, 205, 206, 303, 305, 306, 403, 405,
406, 503, 505, 506, 603, 605, 606, 703, 705, 706, 803, 805, 806,
903, 905, 906, 1003, 1005, 1006, 1103, 1105, 1106, 1203, 1205, 1206,
1303, 1305, 1306, 1403, 1405, 1406, 1503, 1505, 1506, 1603, 1605,
1606, 1703, 1705, 1706, 1803, 1805, 1806, 1903, 1905, 1906

SUITE AREA	672.64	SQ.FT	62.49	SQ.M
BALCONY AREA	61.78	SQ.FT	5.74	SQ.M
TOTAL AREA	734.42	SQ.FT	68.23	SQ.M



KEY SECTION

KEYPLAN



FLOOR PLAN 1. All dimensions are in imperial and metric, and measured from finish to finish excluding construction tolerances. 2. All materials, dimensions, and drawings are approximate only. 3. Information is subject to change without notice, at developer's absolute discretion. 4. Actual area may vary from the stated area. 5. Drawings not to scale. 6. All images used are for illustrative purposes only and do not represent the actual size, features, specifications, fittings, and furnishings. 7. The developer reserves the right to make revisions / alterations, at it's absolute discretion, without any liability whatsoever.

VIDA

RESIDENCES HILLSIDE

TOWER B 1BEDROOM TYPE C

UNITS P08, 112, 216, 316, 416, 516, 616, 716, 816, 916, 1016, 1116,
1216, 1316, 1416, 1516

SUITE AREA	665.53	SQ.FT	61.83	SQ.M
BALCONY AREA	61.78	SQ.FT	5.74	SQ.M
TOTAL AREA	727.31	SQ.FT	67.57	SQ.M

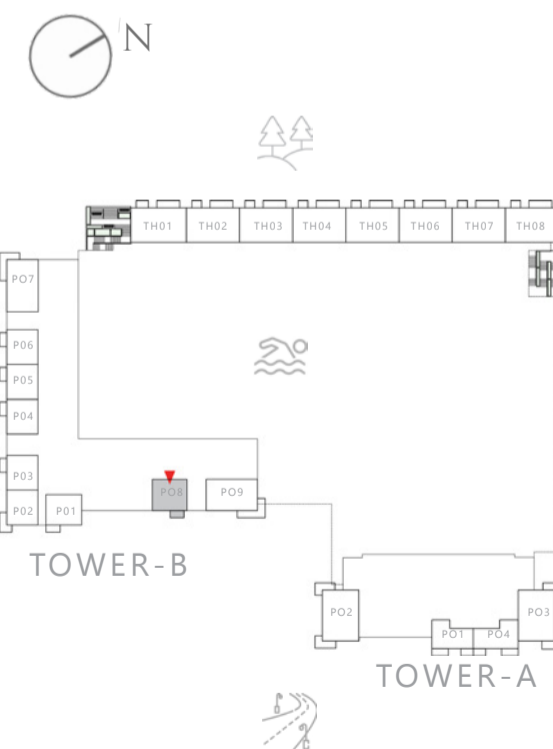
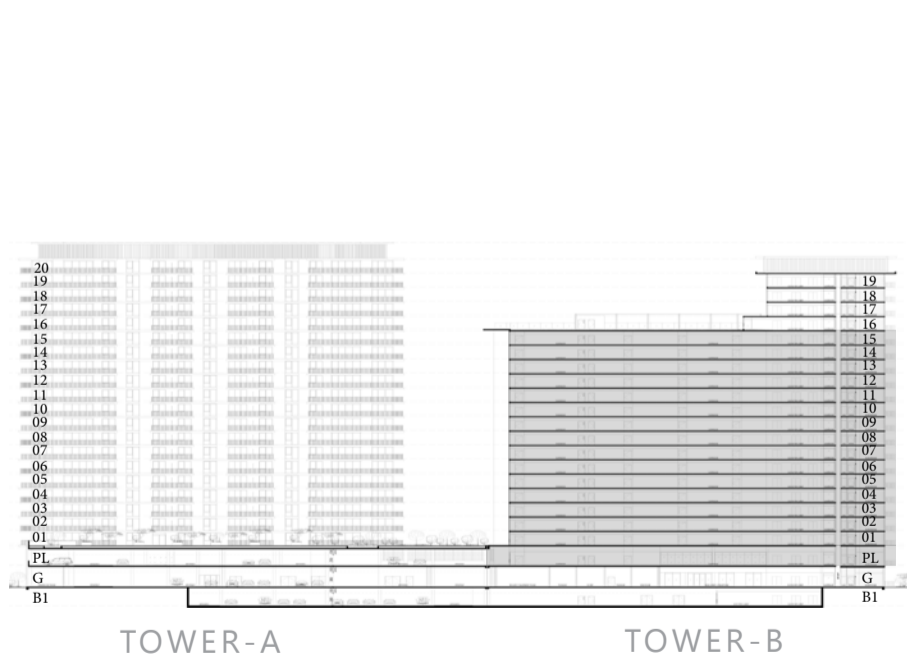
UNITS 111, 113, 215, 217, 315, 317, 415, 417, 515, 517, 615, 617, 715,
717, 815, 817, 915, 917, 1015, 1017, 1115, 1117, 1215, 1217, 1315, 1317,
1415, 1417, 1515, 1517

SUITE AREA	673.17	SQ.FT	62.54	SQ.M
BALCONY AREA	61.78	SQ.FT	5.74	SQ.M
TOTAL AREA	734.95	SQ.FT	68.28	SQ.M

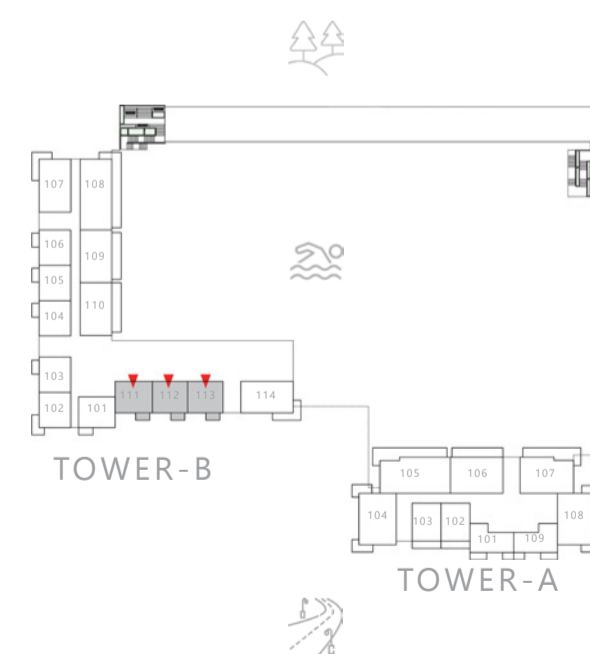


KEY SECTION

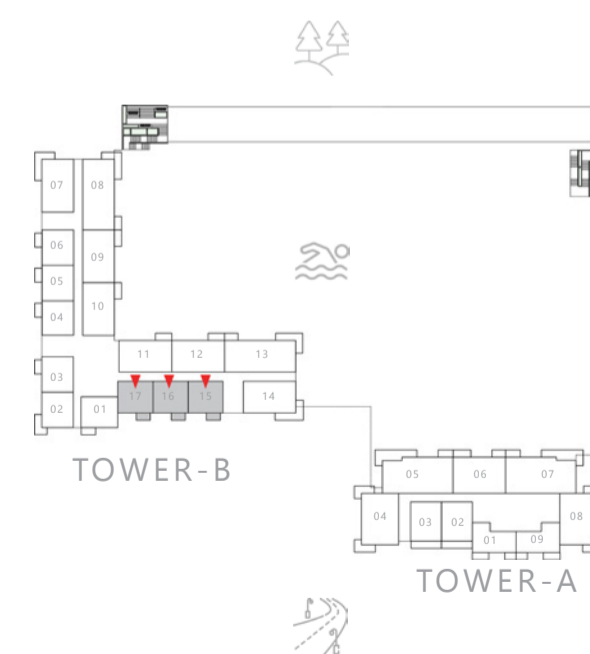
KEYPLAN



PODIUM LEVEL



LEVEL 1



LEVELS 2-15

FLOOR PLAN 1. All dimensions are in imperial and metric, and measured from finish to finish excluding construction tolerances. 2. All materials, dimensions, and drawings are approximate only. 3. Information is subject to change without notice, at developer's absolute discretion. 4. Actual area may vary from the stated area. 5. Drawings not to scale. 6. All images used are for illustrative purposes only and do not represent the actual size, features, specifications, fittings, and furnishings. 7. The developer reserves the right to make revisions / alterations, at its absolute discretion, without any liability whatsoever.

VIDA

RESIDENCES HILLSIDE

TOWER B 1BEDROOM TYPE E

UNITS G01, P01, 101

SUITE AREA	674.79 SQ.FT	62.69 SQ.M
BALCONY AREA	61.46 SQ.FT	5.71 SQ.M
TOTAL AREA	736.25 SQ.FT	68.40 SQ.M

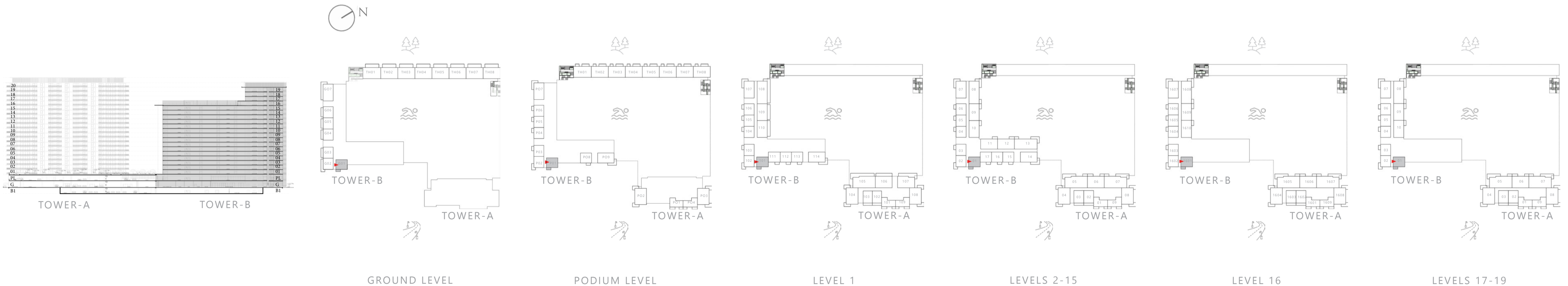
UNITS 201, 301, 401, 501, 601, 701, 801, 901, 1001, 1101, 1201, 1301, 1401, 1501, 1601, 1701, 1801, 1901

SUITE AREA	676.62 SQ.FT	62.86 SQ.M
BALCONY AREA	64.37 SQ.FT	5.98 SQ.M
TOTAL AREA	740.99 SQ.FT	68.84 SQ.M



KEY SECTION

KEYPLAN



FLOOR PLAN 1. All dimensions are in imperial and metric, and measured from finish to finish excluding construction tolerances. 2. All materials, dimensions, and drawings are approximate only. 3. Information is subject to change without notice, at developer's absolute discretion. 4. Actual area may vary from the stated area. 5. Drawings not to scale. 6. All images used are for illustrative purposes only and do not represent the actual size, features, specifications, fittings, and furnishings. 7. The developer reserves the right to make revisions / alterations, at its absolute discretion, without any liability whatsoever.

VIDA

RESIDENCES HILLSIDE

TOWER B 1 BEDROOM TYPE D.1

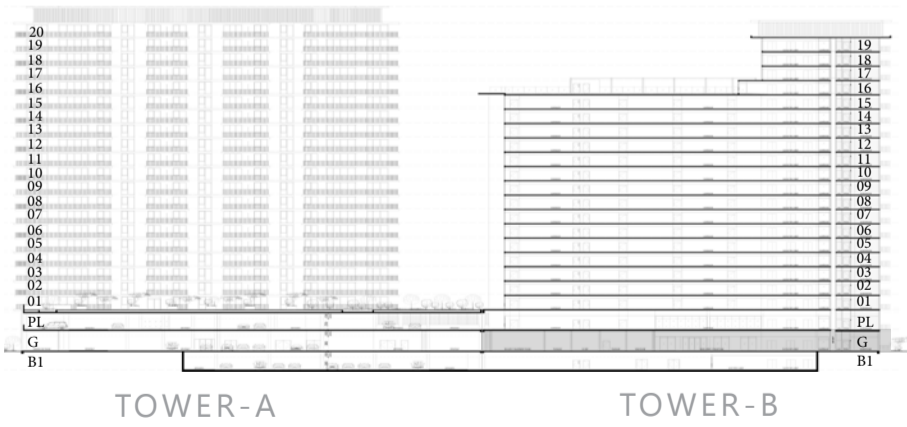
UNIT G02

SUITE AREA	669.52 SQ.FT	62.20 SQ.M
BALCONY AREA	201.50 SQ.FT	18.72 SQ.M
TOTAL AREA	871.02 SQ.FT	80.92 SQ.M



KEY SECTION

KEYPLAN



GROUND FLOOR

FLOOR PLAN 1. All dimensions are in imperial and metric, and measured from finish to finish excluding construction tolerances. 2. All materials, dimensions, and drawings are approximate only. 3. Information is subject to change without notice, at developer's absolute discretion. 4. Actual area may vary from the stated area. 5. Drawings not to scale. 6. All images used are for illustrative purposes only and do not represent the actual size, features, specifications, fittings, and furnishings. 7. The developer reserves the right to make revisions / alterations, at it's absolute discretion, without any liability whatsoever.

VIDA

RESIDENCES HILLSIDE

TOWER B

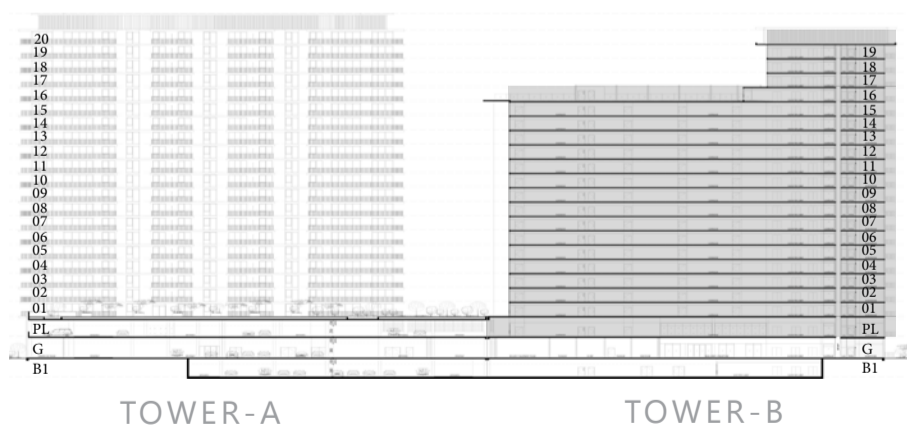
1BEDROOM TYPE D

UNITS P02, 102, 202, 302, 402, 502, 602, 702, 802, 902, 1002,
1102, 1202, 1302, 1402, 1502, 1602, 1702, 1802, 1902

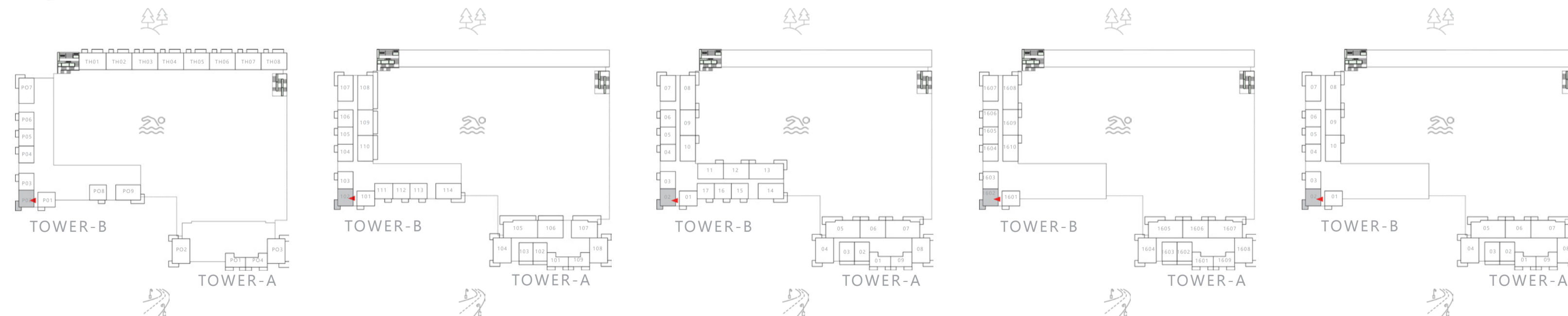
SUITE AREA	665.96 SQ.FT	61.87 SQ.M
BALCONY AREA	111.73 SQ.FT	10.38 SQ.M
TOTAL AREA	777.69 SQ.FT	72.25 SQ.M



KEY SECTION



KEYPLAN



PODIUM LEVEL

LEVEL 1

LEVELS 2-15

LEVEL 16

LEVELS 17-19

FLOOR PLAN 1. All dimensions are in imperial and metric, and measured from finish to finish excluding construction tolerances. 2. All materials, dimensions, and drawings are approximate only. 3. Information is subject to change without notice, at developer's absolute discretion. 4. Actual area may vary from the stated area. 5. Drawings not to scale. 6. All images used are for illustrative purposes only and do not represent the actual size, features, specifications, fittings, and furnishings. 7. The developer reserves the right to make revisions / alterations, at its absolute discretion, without any liability whatsoever.

VIDA

RESIDENCES HILLSIDE

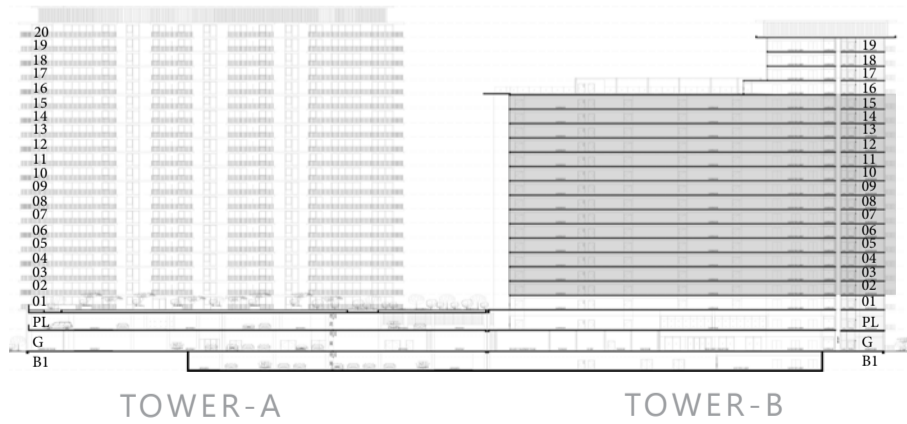
TOWER B 2BEDROOM TYPE D

UNITS 211, 212, 311, 312, 411, 412, 511, 512, 611, 612, 711, 712, 811, 812, 911, 912, 1011, 1012, 1111, 1112, 1211, 1212, 1311, 1312, 1411, 1412, 1511, 1512

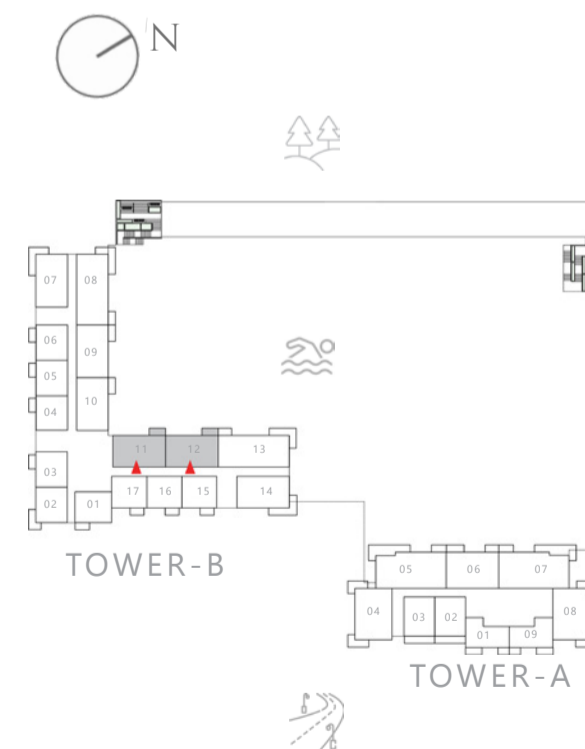
SUITE AREA	996.42 SQ.FT	92.57 SQ.M
BALCONY AREA	73.30 SQ.FT	6.81 SQ.M
TOTAL AREA	1069.72 SQ.FT	99.38 SQ.M



KEY SECTION



KEYPLAN



LEVELS 2-15

FLOOR PLAN 1. All dimensions are in imperial and metric, and measured from finish to finish excluding construction tolerances. 2. All materials, dimensions, and drawings are approximate only. 3. Information is subject to change without notice, at developer's absolute discretion. 4. Actual area may vary from the stated area. 5. Drawings not to scale. 6. All images used are for illustrative purposes only and do not represent the actual size, features, specifications, fittings, and furnishings. 7. The developer reserves the right to make revisions / alterations, at its absolute discretion, without any liability whatsoever.

VIDA

RESIDENCES HILLSIDE

TOWER B

2BEDROOM TYPE D.1

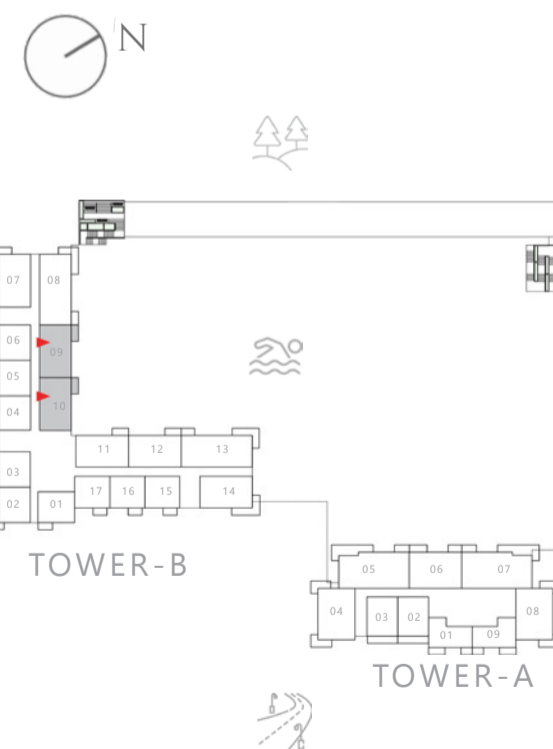
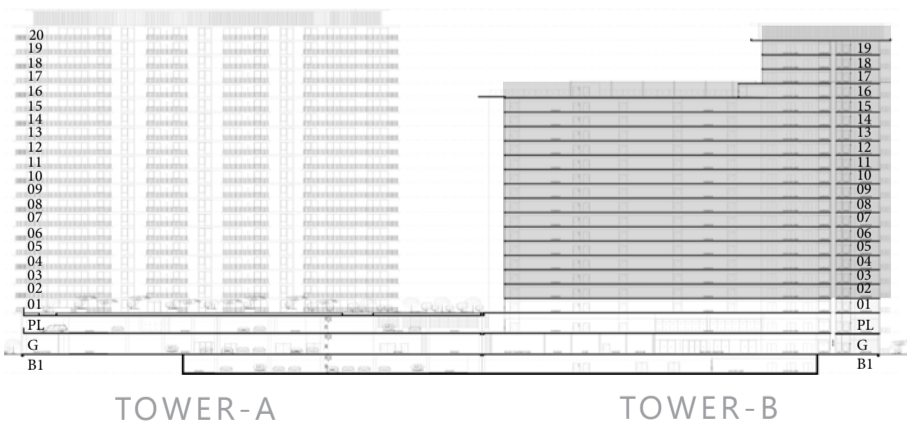
UNITS 209, 210, 309, 310, 409, 410, 509, 510, 609, 610, 709, 710, 809, 810, 909, 910, 1009, 1010, 1109, 1110, 1209, 1210, 1309, 1310, 1409, 1410, 1509, 1510, 1609, 1610, 1709, 1710, 1809, 1810, 1909, 1910

SUITE AREA	992.22 SQ.FT	92.18 SQ.M
BALCONY AREA	72.66 SQ.FT	6.75 SQ.M
TOTAL AREA	1064.88 SQ.FT	98.93 SQ.M

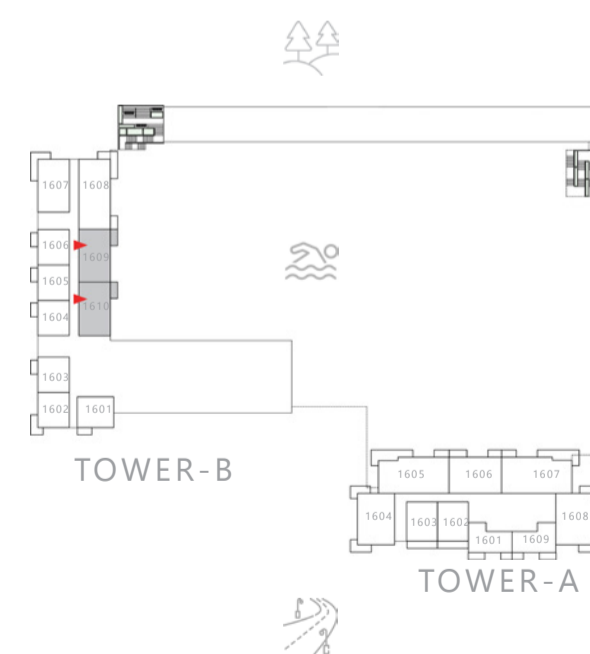


KEY SECTION

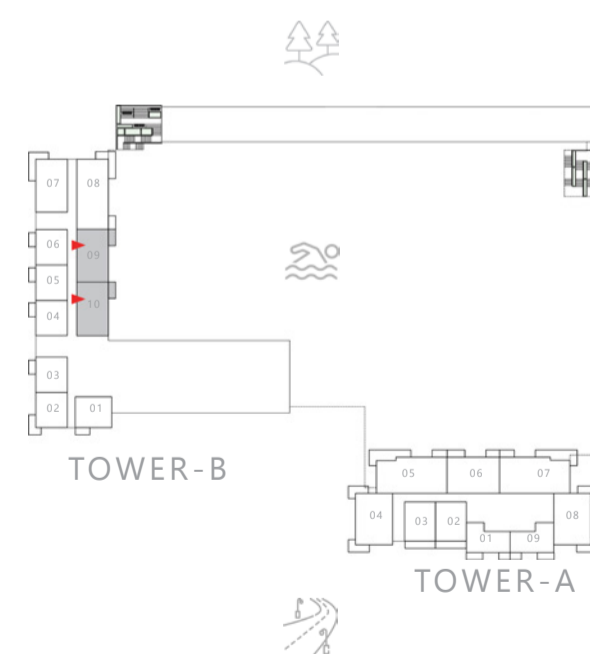
KEYPLAN



LEVELS 2-15



LEVEL 16



LEVELS 17-19

FLOOR PLAN 1. All dimensions are in imperial and metric, and measured from finish to finish excluding construction tolerances. 2. All materials, dimensions, and drawings are approximate only. 3. Information is subject to change without notice, at developer's absolute discretion. 4. Actual area may vary from the stated area. 5. Drawings not to scale. 6. All images used are for illustrative purposes only and do not represent the actual size, features, specifications, fittings, and furnishings. 7. The developer reserves the right to make revisions / alterations, at it's absolute discretion, without any liability whatsoever.

VIDA

RESIDENCES HILLSIDE

TOWER B 2BEDROOM TYPE D.2

UNIT 109

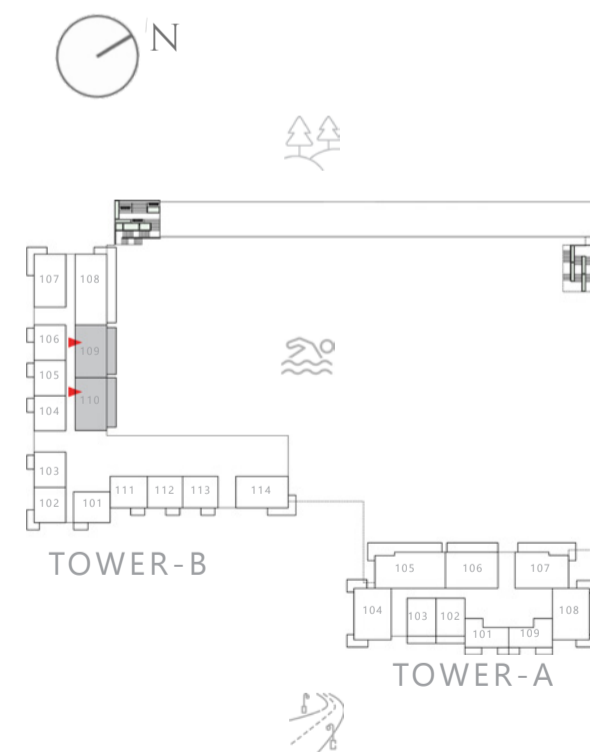
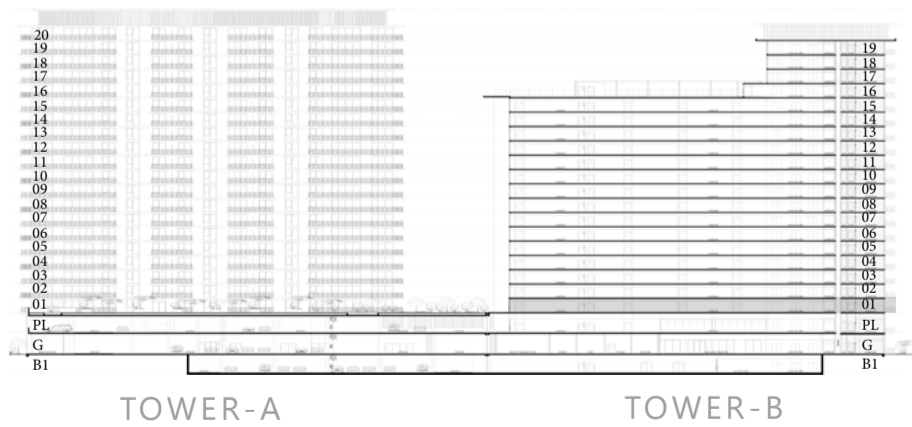
SUITE AREA	996.52 SQ.FT	92.58 SQ.M
BALCONY AREA	269.85 SQ.FT	25.07 SQ.M
TOTAL AREA	1266.37 SQ.FT	117.65 SQ.M

UNIT 110

SUITE AREA	992.54 SQ.FT	92.21 SQ.M
BALCONY AREA	285.03 SQ.FT	26.48 SQ.M
TOTAL AREA	1277.57 SQ.FT	118.69 SQ.M

KEY SECTION

KEYPLAN



LEVEL 1



FLOOR PLAN 1. All dimensions are in imperial and metric, and measured from finish to finish excluding construction tolerances. 2. All materials, dimensions, and drawings are approximate only. 3. Information is subject to change without notice, at developer's absolute discretion. 4. Actual area may vary from the stated area. 5. Drawings not to scale. 6. All images used are for illustrative purposes only and do not represent the actual size, features, specifications, fittings, and furnishings. 7. The developer reserves the right to make revisions / alterations, at it's absolute discretion, without any liability whatsoever.

VIDA

RESIDENCES HILLSIDE

TOWER B 2BEDROOM TYPE E.2

UNIT P09

SUITE AREA	987.48	SQ.FT	91.74	SQ.M
BALCONY AREA	178.25	SQ.FT	16.56	SQ.M
TOTAL AREA	1165.73	SQ.FT	108.30	SQ.M

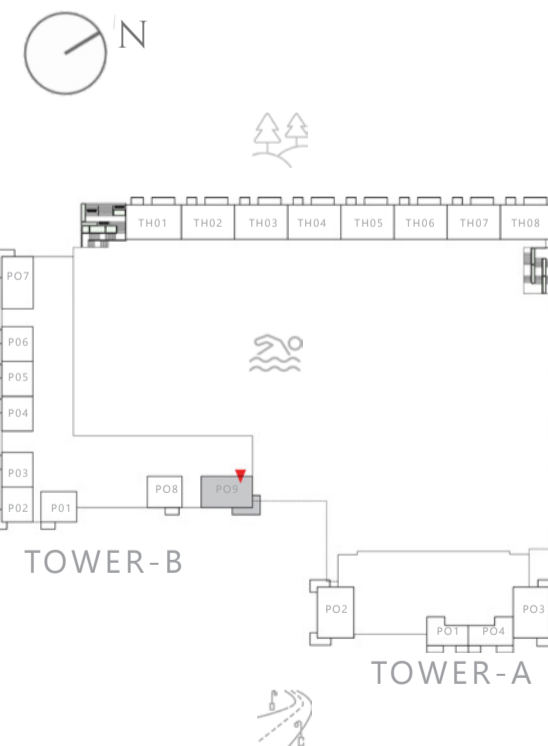
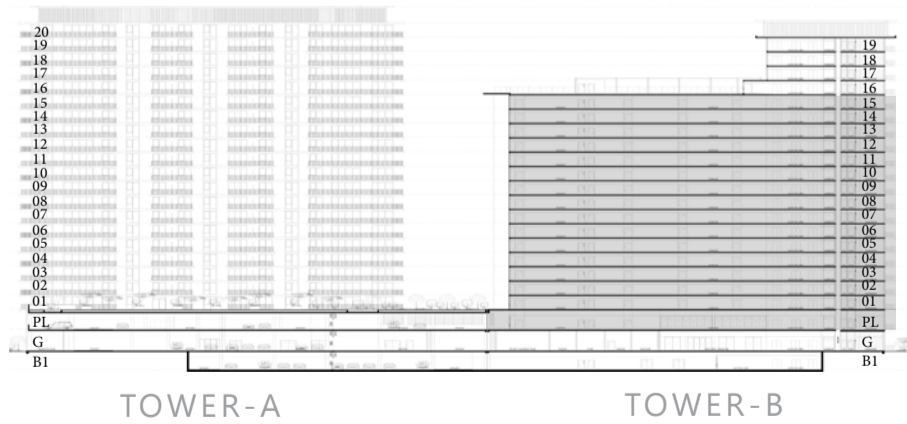
UNITS 114, 214, 314, 414, 514, 614, 714, 814, 914, 1014, 1114, 1214, 1314, 1414, 1514

SUITE AREA	998.03	SQ.FT	92.72	SQ.M
BALCONY AREA	184.06	SQ.FT	17.10	SQ.M
TOTAL AREA	1182.09	SQ.FT	109.82	SQ.M

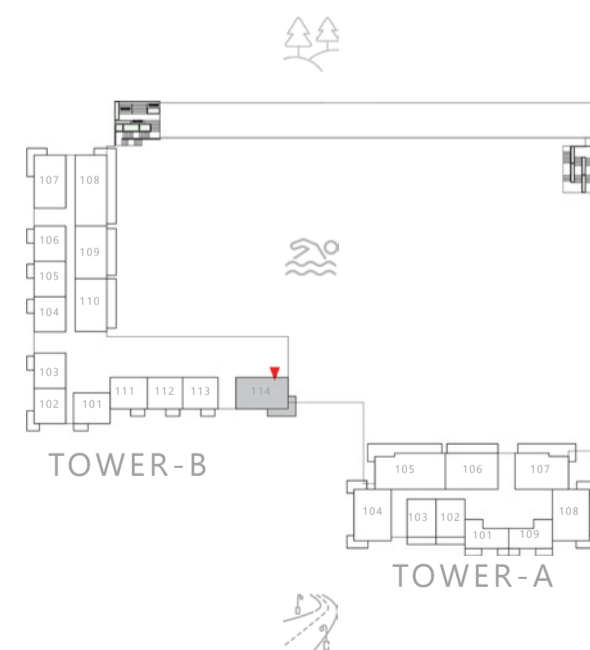


KEY SECTION

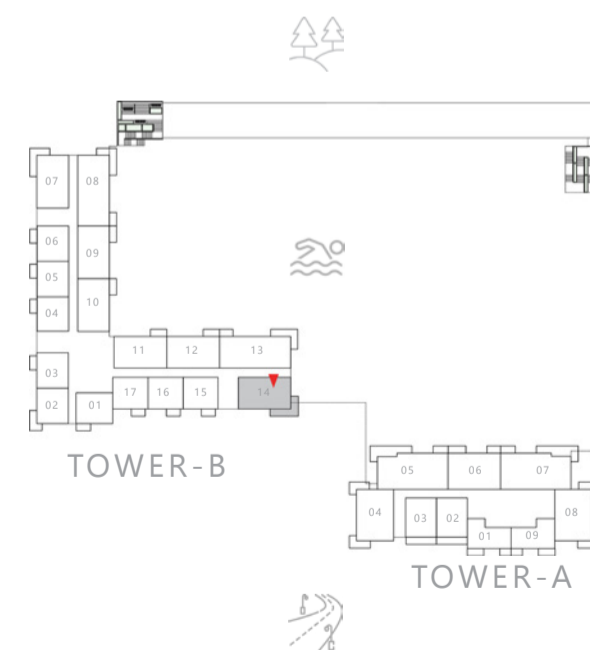
KEYPLAN



PODIUM LEVEL



LEVEL 1



LEVELS 2-15

FLOOR PLAN 1. All dimensions are in imperial and metric, and measured from finish to finish excluding construction tolerances. 2. All materials, dimensions, and drawings are approximate only. 3. Information is subject to change without notice, at developer's absolute discretion. 4. Actual area may vary from the stated area. 5. Drawings not to scale. 6. All images used are for illustrative purposes only and do not represent the actual size, features, specifications, fittings, and furnishings. 7. The developer reserves the right to make revisions / alterations, at its absolute discretion, without any liability whatsoever.

VIDA

RESIDENCES HILLSIDE

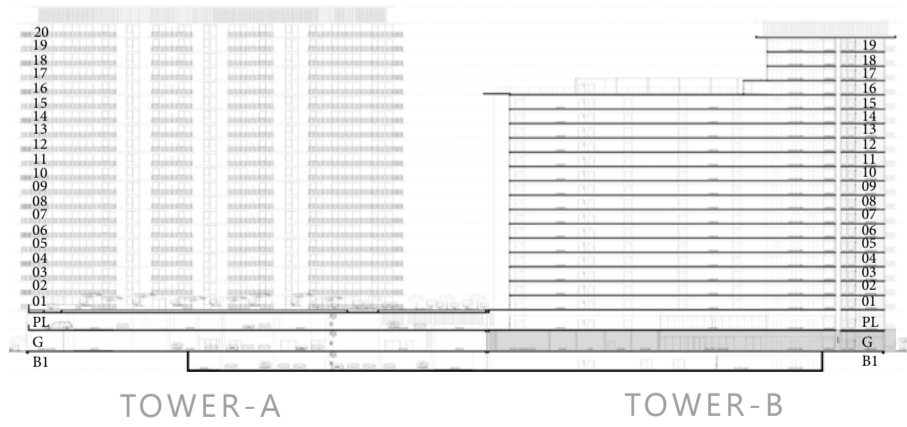
TOWER B 2BEDROOM TYPE E.1

UNIT G07

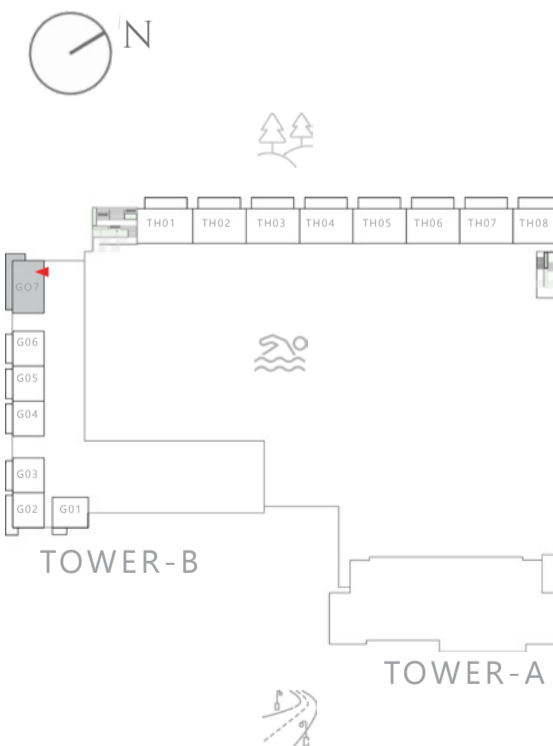
SUITE AREA	991.57 SQ.FT	92.12 SQ.M
BALCONY AREA	308.28 SQ.FT	28.64 SQ.M
TOTAL AREA	1299.85 SQ.FT	120.76 SQ.M



KEY SECTION



KEYPLAN



GROUND FLOOR

FLOOR PLAN 1. All dimensions are in imperial and metric, and measured from finish to finish excluding construction tolerances. 2. All materials, dimensions, and drawings are approximate only. 3. Information is subject to change without notice, at developer's absolute discretion. 4. Actual area may vary from the stated area. 5. Drawings not to scale. 6. All images used are for illustrative purposes only and do not represent the actual size, features, specifications, fittings, and furnishings. 7. The developer reserves the right to make revisions / alterations, at it's absolute discretion, without any liability whatsoever.

VIDA

RESIDENCES HILLSIDE

TOWER B 2BEDROOM TYPE E

UNIT P07

SUITE AREA	992.54 SQ.FT	92.21 SQ.M
BALCONY AREA	183.42 SQ.FT	17.04 SQ.M
TOTAL AREA	1175.96 SQ.FT	109.25 SQ.M

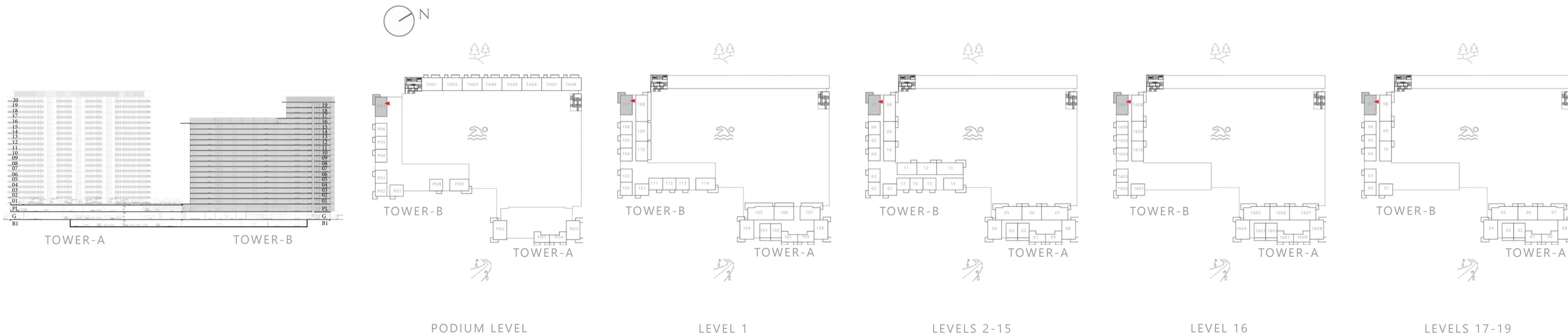
UNITS 107, 207, 307, 407, 507, 607, 707, 807, 907, 1007, 1107, 1207, 1307, 1407, 1507, 1607, 1707, 1807, 1907

SUITE AREA	996.74 SQ.FT	92.60 SQ.M
BALCONY AREA	183.42 SQ.FT	17.04 SQ.M
TOTAL AREA	1180.16 SQ.FT	109.64 SQ.M



KEY SECTION

KEYPLAN



FLOOR PLAN 1. All dimensions are in imperial and metric, and measured from finish to finish excluding construction tolerances. 2. All materials, dimensions, and drawings are approximate only. 3. Information is subject to change without notice, at developer's absolute discretion. 4. Actual area may vary from the stated area. 5. Drawings not to scale. 6. All images used are for illustrative purposes only and do not represent the actual size, features, specifications, fittings, and furnishings. 7. The developer reserves the right to make revisions / alterations, at it's absolute discretion, without any liability whatsoever.

VIDA

RESIDENCES HILLSIDE

TOWER B 3BEDROOM TYPE B.2

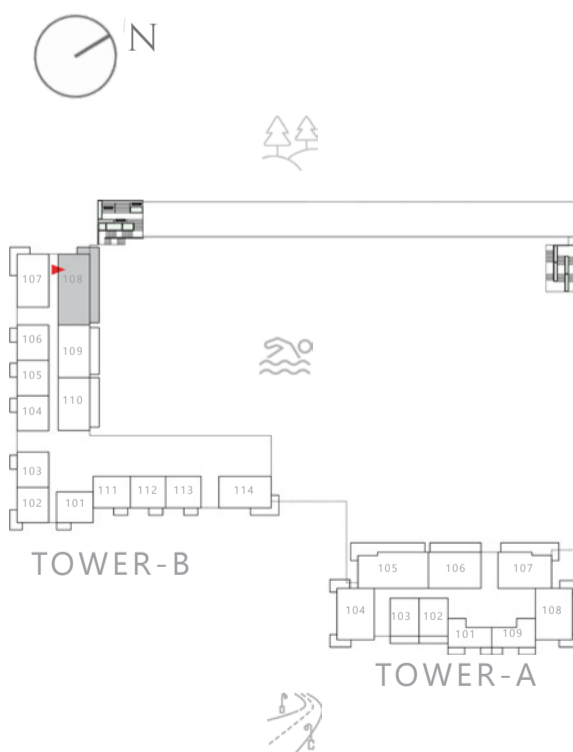
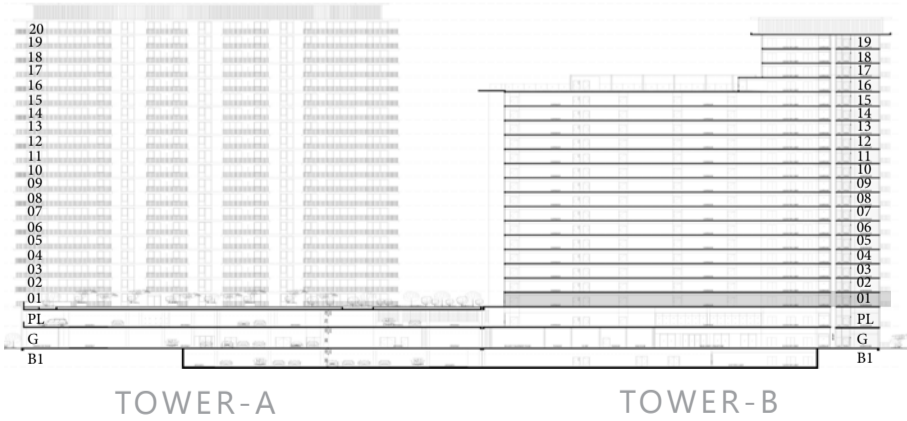
UNIT 108

SUITE AREA	1345.27 SQ.FT	124.98 SQ.M
BALCONY AREA	492.02 SQ.FT	45.71 SQ.M
TOTAL AREA	1837.29 SQ.FT	170.69 SQ.M



KEY SECTION

KEYPLAN



LEVEL 1

FLOOR PLAN 1. All dimensions are in imperial and metric, and measured from finish to finish excluding construction tolerances. 2. All materials, dimensions, and drawings are approximate only. 3. Information is subject to change without notice, at developer's absolute discretion. 4. Actual area may vary from the stated area. 5. Drawings not to scale. 6. All images used are for illustrative purposes only and do not represent the actual size, features, specifications, fittings, and furnishings. 7. The developer reserves the right to make revisions / alterations, at it's absolute discretion, without any liability whatsoever.

VIDA

RESIDENCES HILLSIDE

TOWER B 3BEDROOM TYPE B.1

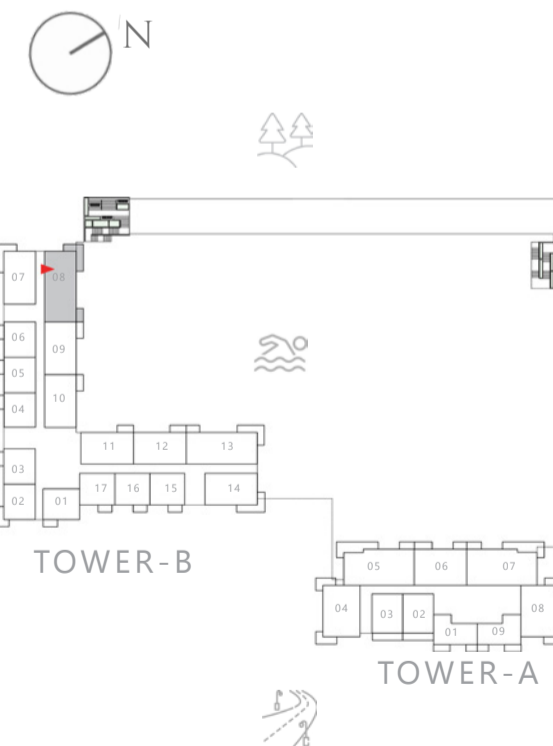
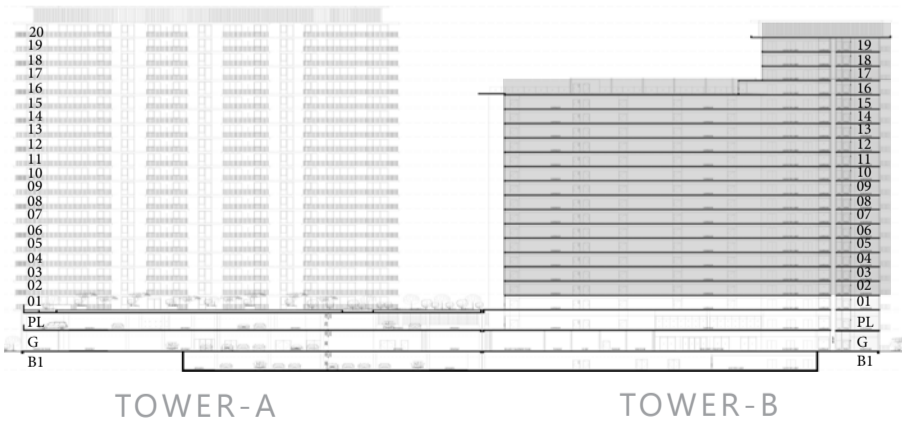
UNITS 208, 308, 408, 508, 608, 708, 908, 1008, 1108, 1208, 1308,
1408, 1508, 1608, 1708, 1808, 1908

SUITE AREA	1345.27 SQ.FT	124.98 SQ.M
BALCONY AREA	237.67 SQ.FT	22.08 SQ.M
TOTAL AREA	1582.94 SQ.FT	147.06 SQ.M

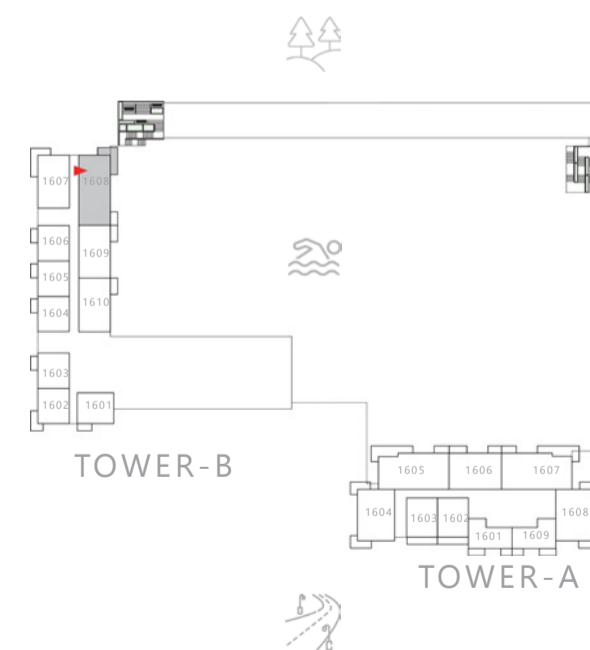


KEY SECTION

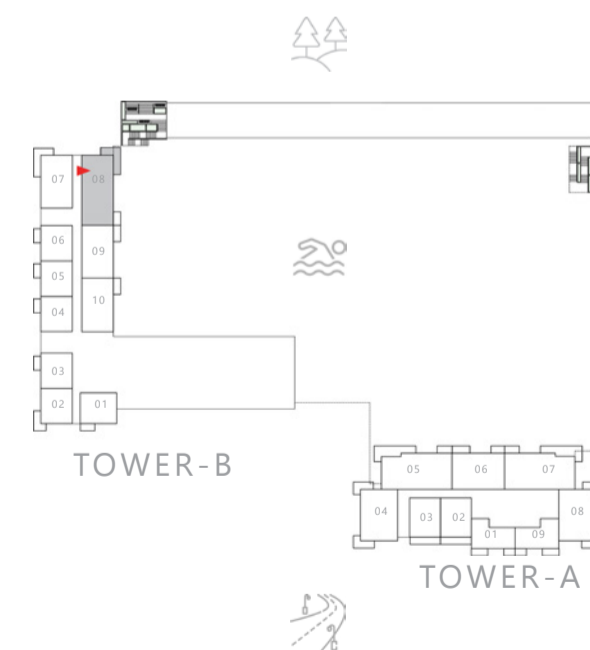
KEYPLAN



LEVELS 2-15



LEVEL 16



LEVELS 17-19

FLOOR PLAN 1. All dimensions are in imperial and metric, and measured from finish to finish excluding construction tolerances. 2. All materials, dimensions, and drawings are approximate only. 3. Information is subject to change without notice, at developer's absolute discretion. 4. Actual area may vary from the stated area. 5. Drawings not to scale. 6. All images used are for illustrative purposes only and do not represent the actual size, features, specifications, fittings, and furnishings. 7. The developer reserves the right to make revisions / alterations, at it's absolute discretion, without any liability whatsoever.

VIDA

RESIDENCES HILLSIDE

TOWER B

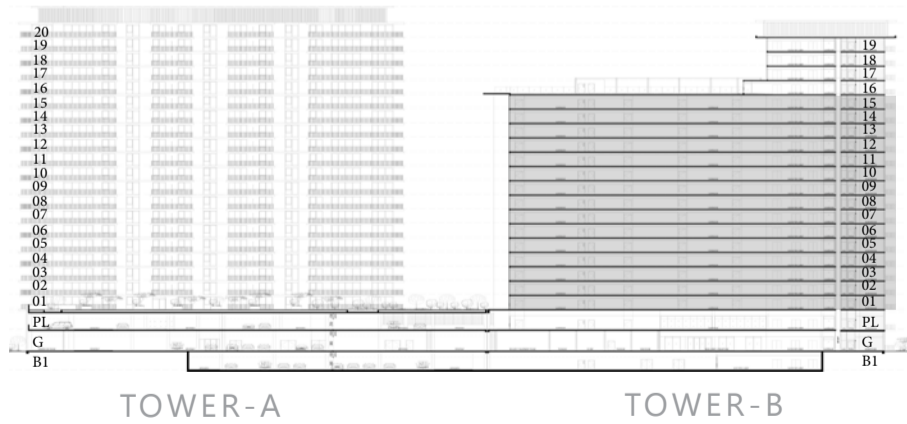
3BEDROOM TYPE B

UNITS 213, 313, 413, 513, 613, 713, 813, 913, 1013, 1113, 1213, 1313, 1413, 1513

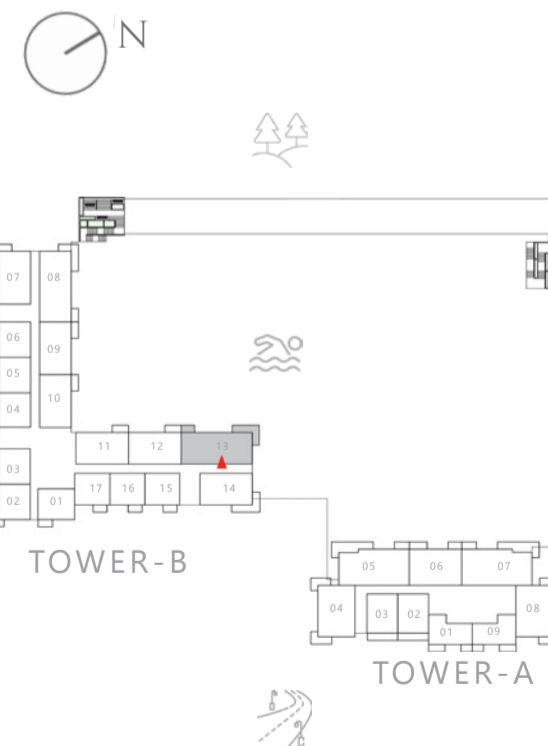
SUITE AREA	1345.70 SQ.FT	125.02 SQ.M
BALCONY AREA	237.02 SQ.FT	22.02 SQ.M
TOTAL AREA	1582.72 SQ.FT	147.04 SQ.M



KEY SECTION



KEYPLAN



LEVELS 2-15

FLOOR PLAN 1. All dimensions are in imperial and metric, and measured from finish to finish excluding construction tolerances. 2. All materials, dimensions, and drawings are approximate only. 3. Information is subject to change without notice, at developer's absolute discretion. 4. Actual area may vary from the stated area. 5. Drawings not to scale. 6. All images used are for illustrative purposes only and do not represent the actual size, features, specifications, fittings, and furnishings. 7. The developer reserves the right to make revisions / alterations, at its absolute discretion, without any liability whatsoever.

VIDA

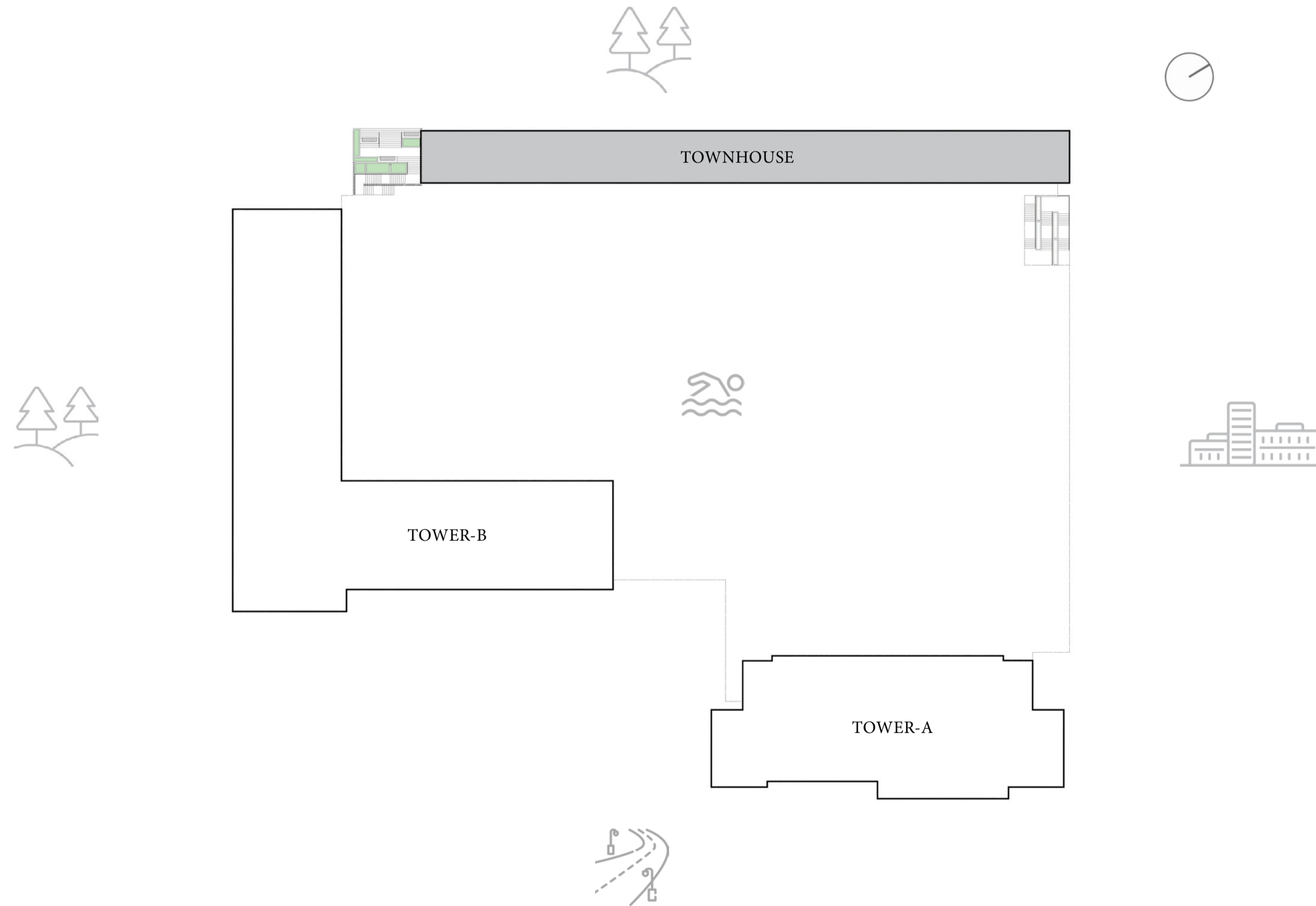
RESIDENCES
HILLSIDE

FLOOR PLANS | TOWNHOUSE

EMAAR

MASTER PLAN

TOWNHOUSE



VIDA

RESIDENCES HILLSIDE

TOWNHOUSE

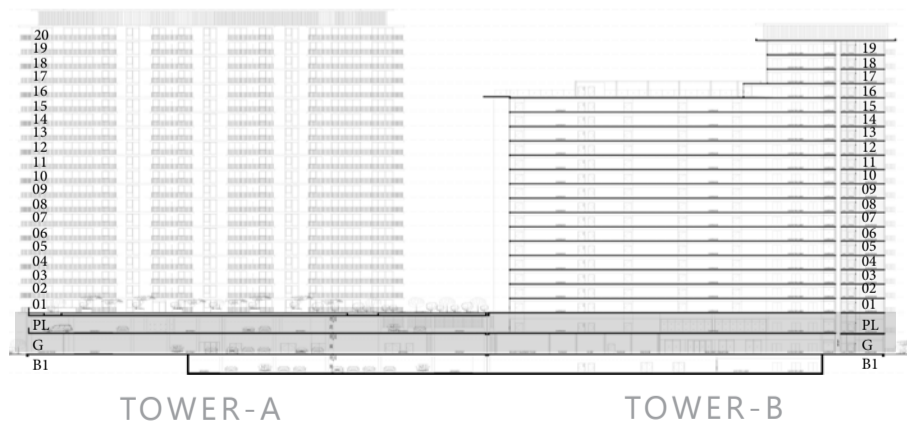
UNITS TH01, TH02, TH03, TH04, TH05, TH06, TH07

SUITE AREA	2180.55 SQ.FT	202.58 SQ.M
BALCONY AREA	441.64 SQ.FT	41.03 SQ.M
TOTAL AREA	2622.19 SQ.FT	243.61 SQ.M

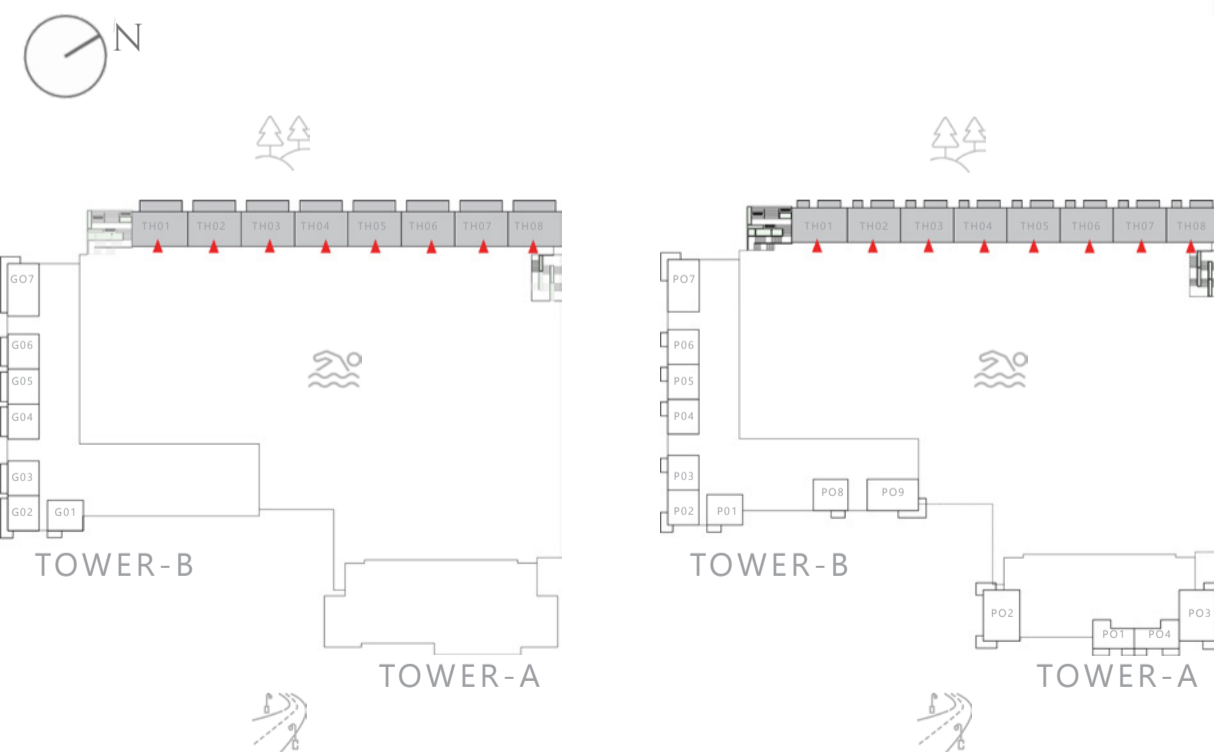
UNIT TH08

SUITE AREA	2173.77 SQ.FT	201.95 SQ.M
BALCONY AREA	442.71 SQ.FT	41.13 SQ.M
TOTAL AREA	2616.48 SQ.FT	243.08 SQ.M

KEY SECTION



KEYPLAN



GROUND FLOOR

PODIUM LEVEL



GROUND FLOOR



FIRST FLOOR

FLOOR PLAN 1. All dimensions are in imperial and metric, and measured from finish to finish excluding construction tolerances. 2. All materials, dimensions, and drawings are approximate only. 3. Information is subject to change without notice, at developer's absolute discretion. 4. Actual area may vary from the stated area. 5. Drawings not to scale. 6. All images used are for illustrative purposes only and do not represent the actual size, features, specifications, fittings, and furnishings. 7. The developer reserves the right to make revisions / alterations, at it's absolute discretion, without any liability whatsoever.