



AL AMEERA

VILLAGE

Developed By:



PROPERTIES
جى جا العقارية

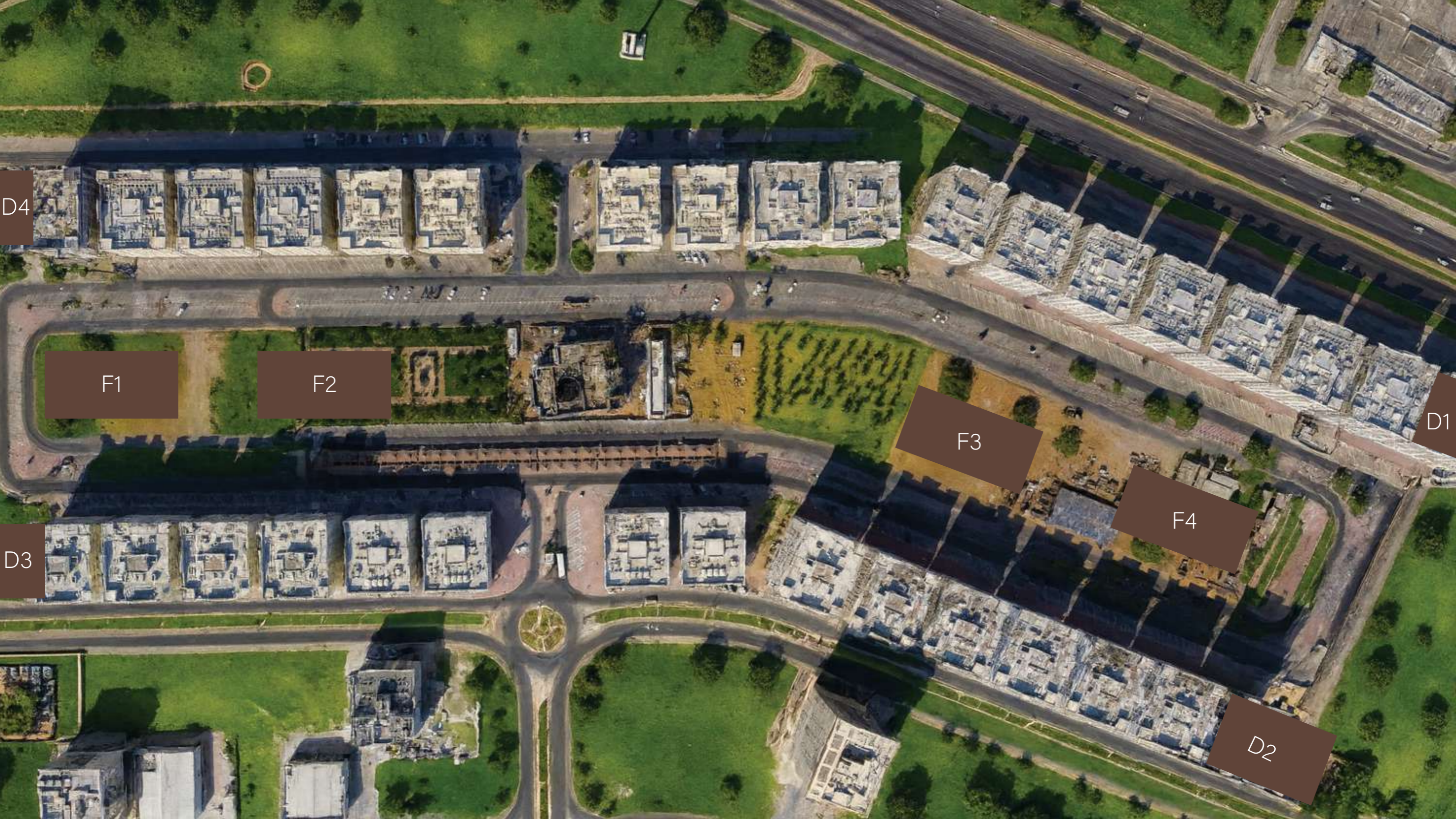
www.alameeravillage.ae



Ajman, centuries in the making.

Ajman's got the perfect balance of tradition and adventure. It features stunning beaches with crystal-clear water perfect for diving, jet skiing, or just relaxing. History aficionados will love the Ajman Museum, set in an 18th-century fort that tells the story of the region's past.





D4

F1

F2

F3

F4

D1

D3

D2

Moments away.

Under 10 Minutes

- Al Hamidiya Park
- Ajman Corniche

10 - 20 Minutes

- Ajman City Center
- Ajman University
- Ajman Beach
- Al Zorah Natural Reserve

20 - 30 Minutes

- Amina Hospital
- Sharjah International Airport
- Dubai International Airport

30+ Minutes

- Al Marjan Island, Ras Al Khaimah
- Downtown Dubai

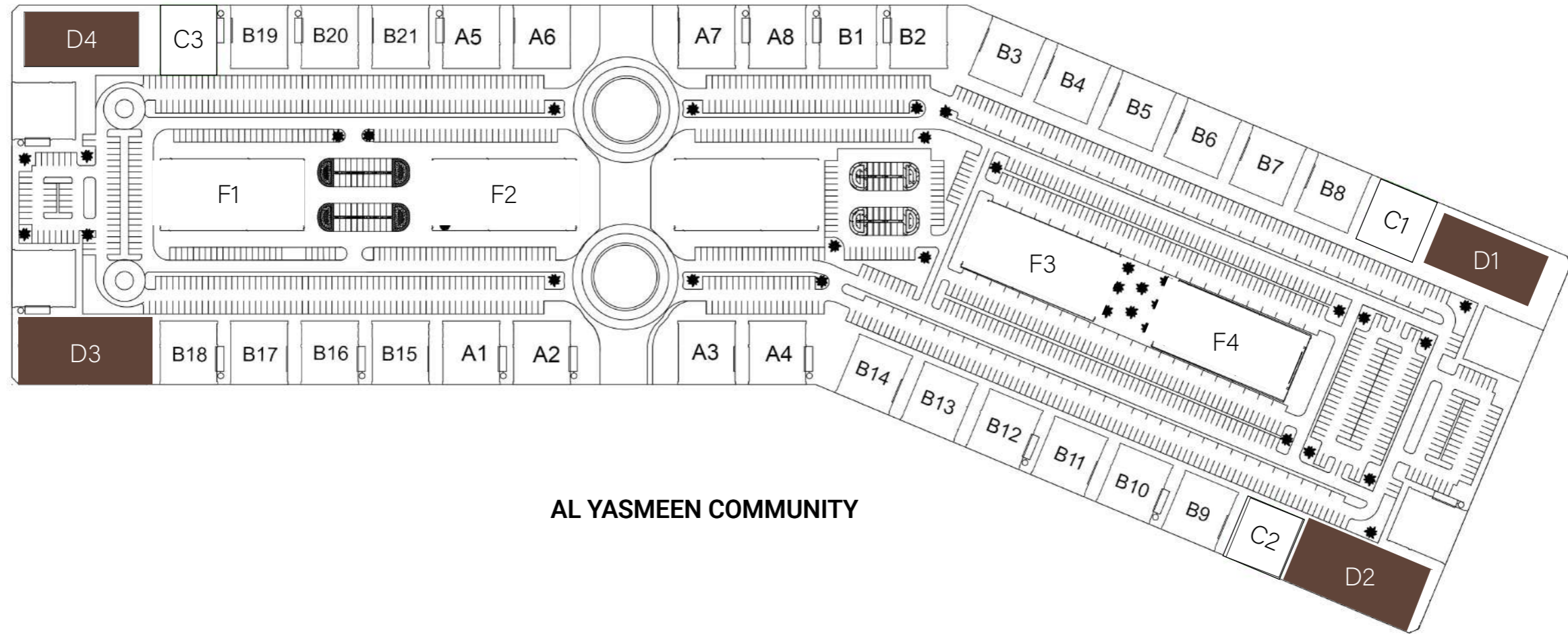
The developer.

GJ Properties has successfully delivered a series of high-quality projects across Ajman and the Northern Emirates over the past decade.

Renowned for creating exceptional residential spaces, the developer adheres to the highest industry standards to ensure a lifestyle of unparalleled quality.

SHEIKH MAKTOUM BIN RASHID STREET

SHEIKH MOHAMMED BIN ZAYED
ROAD - E311



AL HAMIDIYA PARK

AL YASMEEN COMMUNITY

FLOOR PLAN

Ground Floor

1 Bedroom Retail Area

SHEIKH MAKTOUM BIN RASHID STREET



AL HAMIDIYA PARK

AI YASMEEN COMMUNITY

GROUND FLOOR 1 BEDROOM

Series no: 01

Gross area: 1589.42 sqft
147.66 sqm



Disclaimer:

1. All materials, finishes, dimensions and drawings are approximate.
2. Information is subject to change without notice.
3. Actual suite area may vary from the stated area.
4. Drawings are not to scale.
5. The Developer reserves the right to make revisions/alterations without any liability whatsoever.

FLOOR PLAN

Typical - 1st to 15th

Studio
 1 Bedroom
 2 Bedroom

SHEIKH MAKTOUM BIN RASHID STREET



AL HAMIDIYA PARK

AI YASMEEN COMMUNITY

TYPICAL FLOOR STUDIO

Series no: 01

Gross area: 639.29 sqft
59.39 sqm

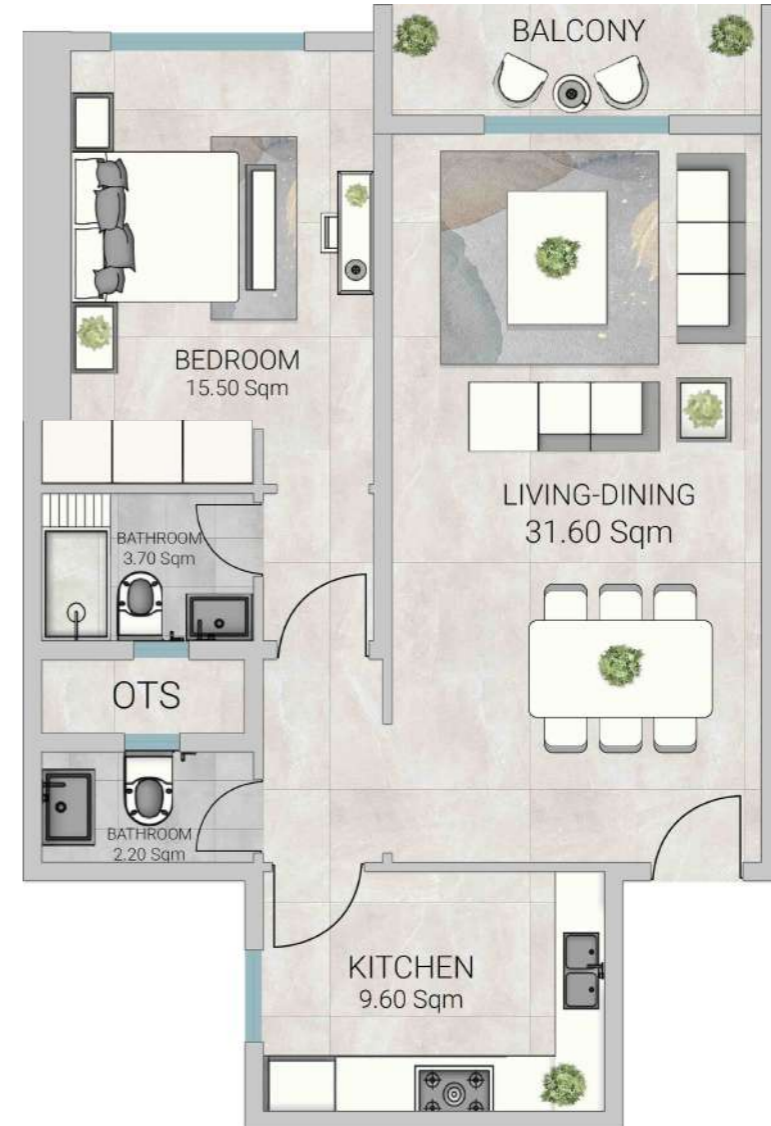


Disclaimer:
1. All materials, finishes, dimensions and drawings are approximate.
2. Information is subject to change without notice.
3. Actual suite area may vary from the stated area.
4. Drawings are not to scale.
5. The Developer reserves the right to make revisions/alterations without any liability whatsoever.

TYPICAL FLOOR I BEDROOM

Series no: 02

Gross area: 1113.52 sqft
103.45 sqm



Disclaimer:

1. All materials, finishes, dimensions and drawings are approximate.
2. Information is subject to change without notice.
3. Actual suite area may vary from the stated area.
4. Drawings are not to scale.
5. The Developer reserves the right to make revisions/alterations without any liability whatsoever.

TYPICAL FLOOR I BEDROOM

Series no: 03

Gross area: 1116.02 sqft
103.68 sqm



Disclaimer:

1. All materials, finishes, dimensions and drawings are approximate.
2. Information is subject to change without notice.
3. Actual suite area may vary from the stated area.
4. Drawings are not to scale.
5. The Developer reserves the right to make revisions/alterations without any liability whatsoever.

TYPICAL FLOOR 2 BEDROOM

Series no: 04

Gross area: 1953.34 sqft
181.47 sqm



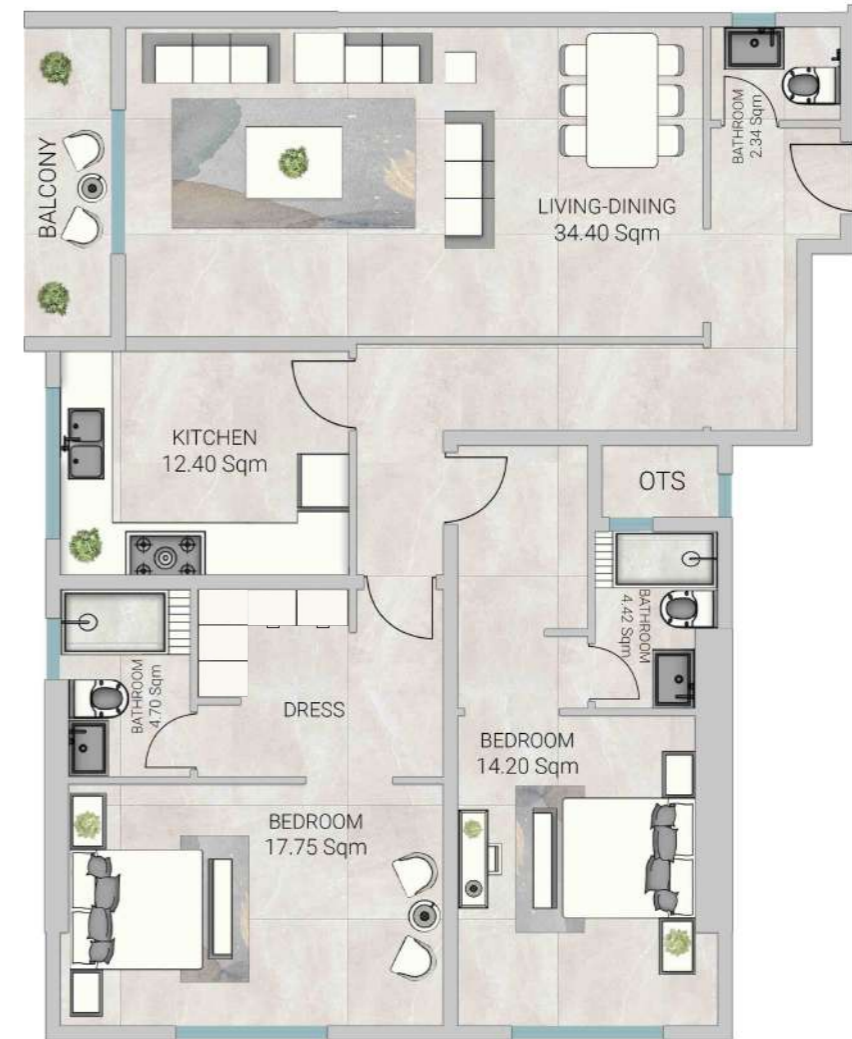
Disclaimer:

1. All materials, finishes, dimensions and drawings are approximate.
2. Information is subject to change without notice.
3. Actual suite area may vary from the stated area.
4. Drawings are not to scale.
5. The Developer reserves the right to make revisions/alterations without any liability whatsoever.

TYPICAL FLOOR 2 BEDROOM

Series no: 05

Gross area: 1931.30 sqft
179.42 sqm



Disclaimer:

1. All materials, finishes, dimensions and drawings are approximate.
2. Information is subject to change without notice.
3. Actual suite area may vary from the stated area.
4. Drawings are not to scale.
5. The Developer reserves the right to make revisions/alterations without any liability whatsoever.



LOBBY



LIVING ROOM

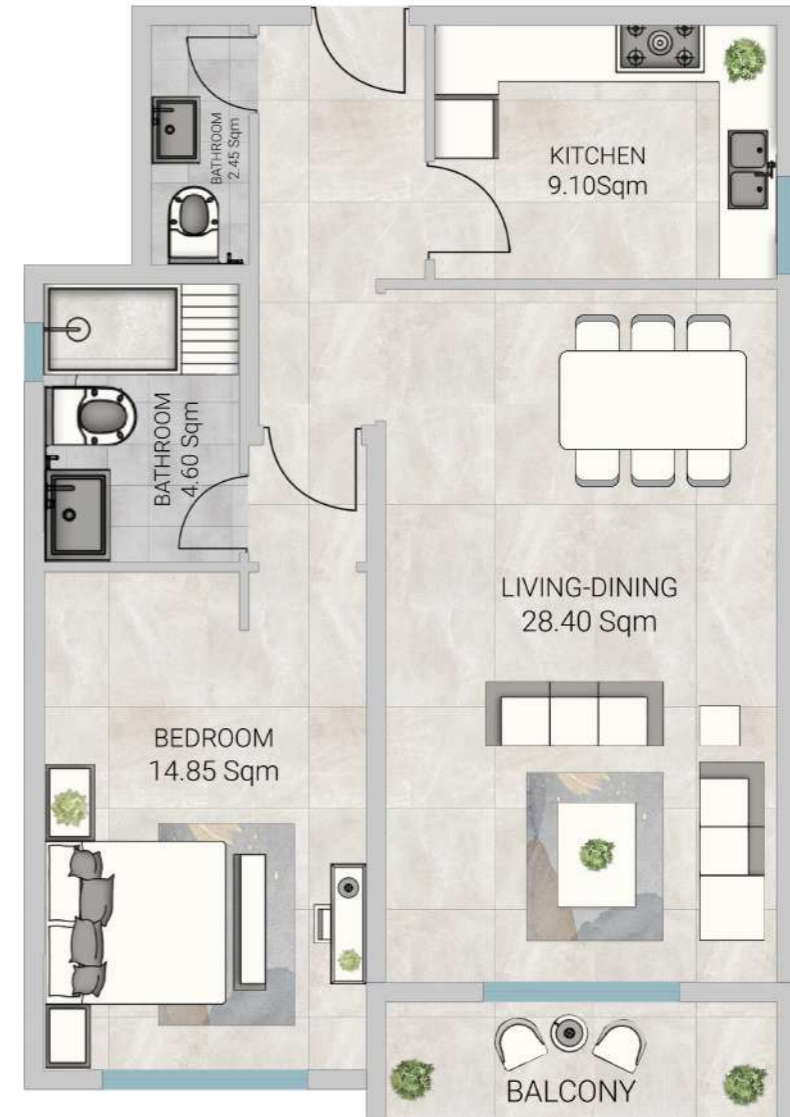


KITCHEN

TYPICAL FLOOR I BEDROOM

Series no: 06

Gross area: 1155.23 sqft
107.32 sqm



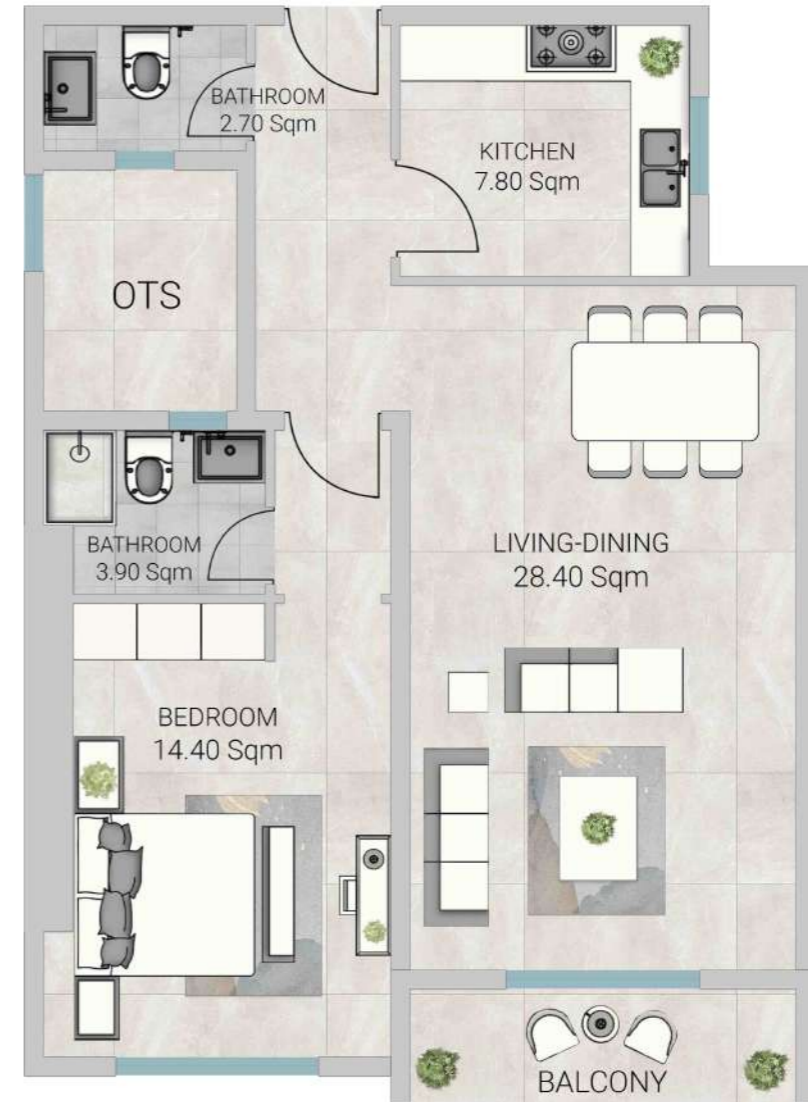
Disclaimer:

1. All materials, finishes, dimensions and drawings are approximate.
2. Information is subject to change without notice.
3. Actual suite area may vary from the stated area.
4. Drawings are not to scale.
5. The Developer reserves the right to make revisions/alterations without any liability whatsoever.

TYPICAL FLOOR I BEDROOM

Series no: 07

Gross area: 1089.27 sqft
101.20 sqm



Disclaimer:

1. All materials, finishes, dimensions and drawings are approximate.
2. Information is subject to change without notice.
3. Actual suite area may vary from the stated area.
4. Drawings are not to scale.
5. The Developer reserves the right to make revisions/alterations without any liability whatsoever.

TYPICAL FLOOR I BEDROOM

Series no: 08

Gross area: 1157.04 sqft
107.49 sqm



Disclaimer:

1. All materials, finishes, dimensions and drawings are approximate.
2. Information is subject to change without notice.
3. Actual suite area may vary from the stated area.
4. Drawings are not to scale.
5. The Developer reserves the right to make revisions/alterations without any liability whatsoever.

TYPICAL FLOOR I BEDROOM

Series no: 09

Gross area: 1140.13 sqft
105.92 sqm



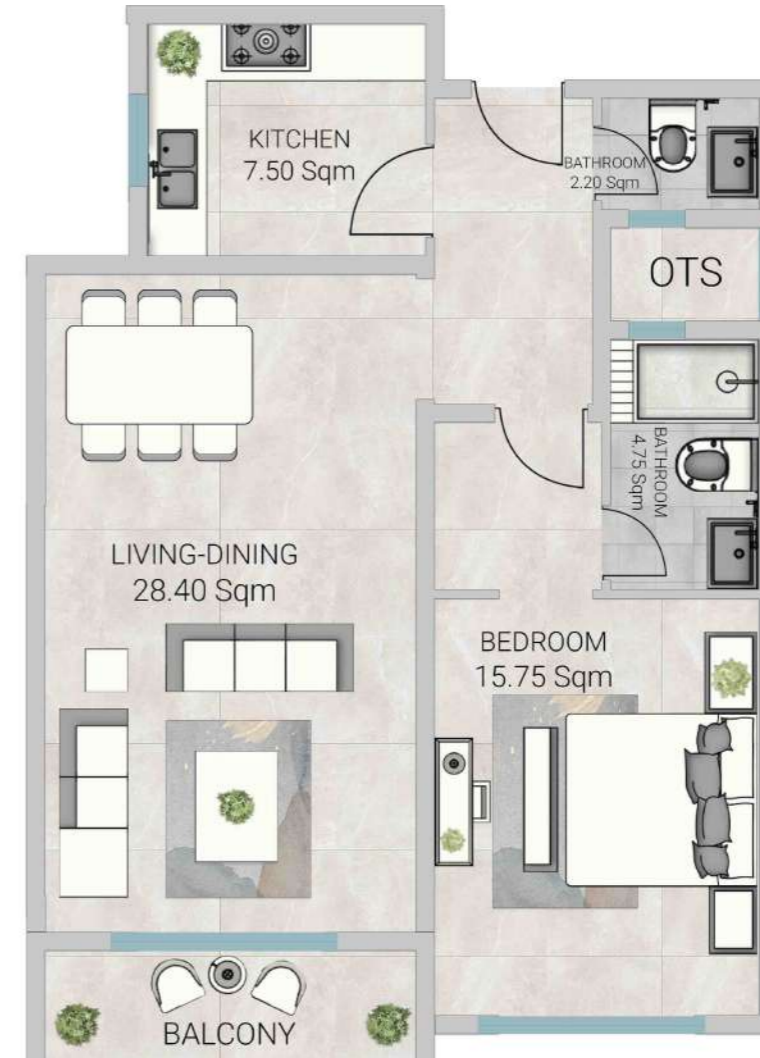
Disclaimer:

1. All materials, finishes, dimensions and drawings are approximate.
2. Information is subject to change without notice.
3. Actual suite area may vary from the stated area.
4. Drawings are not to scale.
5. The Developer reserves the right to make revisions/alterations without any liability whatsoever.

TYPICAL FLOOR I BEDROOM

Series no: 10

Gross area: 1099.94 sqft
102.19 sqm



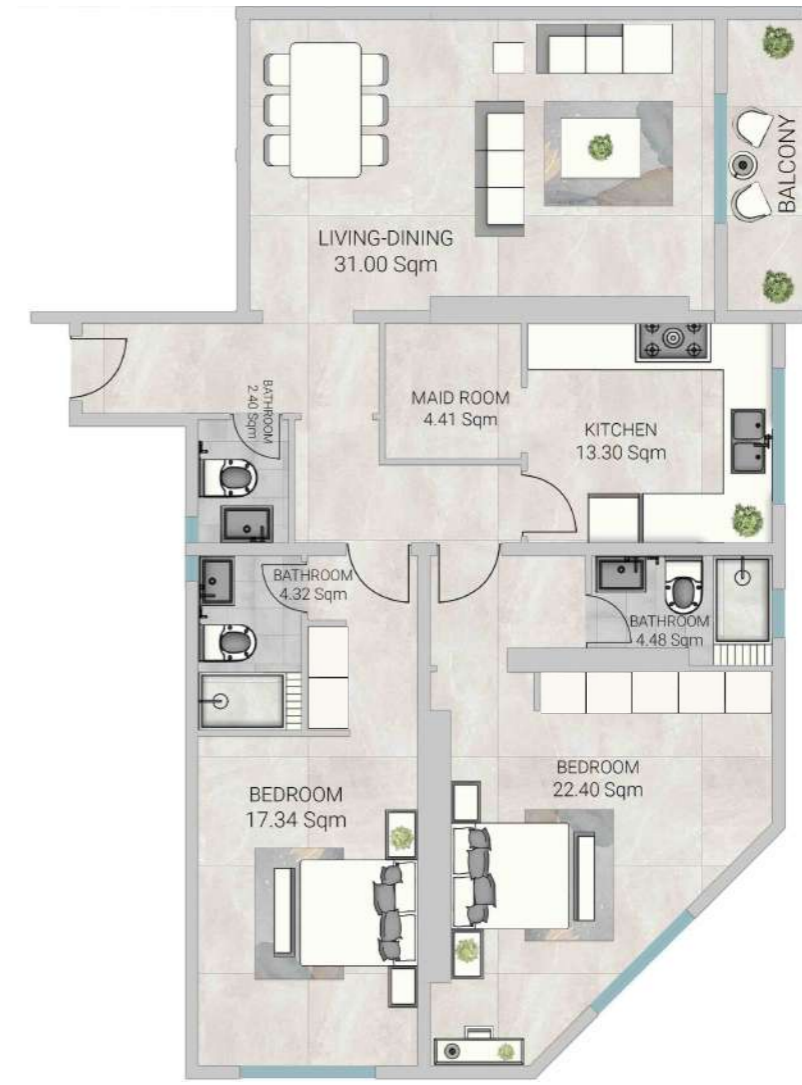
Disclaimer:

1. All materials, finishes, dimensions and drawings are approximate.
2. Information is subject to change without notice.
3. Actual suite area may vary from the stated area.
4. Drawings are not to scale.
5. The Developer reserves the right to make revisions/alterations without any liability whatsoever.

TYPICAL FLOOR 2 BEDROOM

Series no: 11

Gross area: 1999.63 sqft
185.77 sqm



- Disclaimer:**
1. All materials, finishes, dimensions and drawings are approximate.
 2. Information is subject to change without notice.
 3. Actual suite area may vary from the stated area.
 4. Drawings are not to scale.
 5. The Developer reserves the right to make revisions/alterations without any liability whatsoever.

TYPICAL FLOOR 2 BEDROOM

Series no: 12
 Gross area: 1640.14 sqft
 152.37 sqm



Disclaimer:

1. All materials, finishes, dimensions and drawings are approximate.
2. Information is subject to change without notice.
3. Actual suite area may vary from the stated area.
4. Drawings are not to scale.
5. The Developer reserves the right to make revisions/alterations without any liability whatsoever.

TYPICAL FLOOR I BEDROOM

Series no: 13

Gross area: 1191.96 sqft
110.74 sqm



Disclaimer:

1. All materials, finishes, dimensions and drawings are approximate.
2. Information is subject to change without notice.
3. Actual suite area may vary from the stated area.
4. Drawings are not to scale.
5. The Developer reserves the right to make revisions/alterations without any liability whatsoever.

TYPICAL FLOOR I BEDROOM

Series no: 14

Gross area: 1168.40 sqft
108.55 sqm



Disclaimer:

1. All materials, finishes, dimensions and drawings are approximate.
2. Information is subject to change without notice.
3. Actual suite area may vary from the stated area.
4. Drawings are not to scale.
5. The Developer reserves the right to make revisions/alterations without any liability whatsoever.

TYPICAL FLOOR STUDIO

Series no: 15

Gross area: 659.24 sqft
61.25 sqm



Disclaimer:
1. All materials, finishes, dimensions and drawings are approximate.
2. Information is subject to change without notice.
3. Actual suite area may vary from the stated area.
4. Drawings are not to scale.
5. The Developer reserves the right to make revisions/alterations without any liability whatsoever.



GUEST ROOM



BATHROOM

Payment Plan.

5% Down Payment

1% Monthly for 36 Months (During Construction)

10% on Handover

1% Monthly for 48 Months (Post Handover Payment Plan)



BEDROOM



AL AMEERA VILLAGE

Ground Floor, Rose Tower
Emirates City, E311 Road, Ajman, UAE

Phone: +971 6 741 4478
Toll Free: 800 GJAJM (45256)
Email: info@gjproperties.ae

www.gjproperties.ae



PROPERTIES
جي جا العقارية