



HELVETIA  
*verde*

# *Unit Layouts & Floor Plans*

MEYDAN HORIZON, DUBAI



## *Modern Homes, Community Lifestyle*

Helvetia Verde offers premium living with smart layouts, elegant design, and top-class amenities.

Choose from 1-, 2-, and 3-bedroom apartments, all designed to maximize space and natural light. With only 3 to 7 residences per floor, Helvetia Verde combines exclusivity with a sense of community.

## *Special Collection, Luxury Feel*

Garden apartments on the first floor bring a villa-like feel, blending indoor and outdoor living amid landscaped greenery.

On the top floor, 3-bedroom plus maid's residences provide breathtaking views and an elevated living experience.



# *Unit Layouts*

# 1-Bedroom Residence

## Type 1

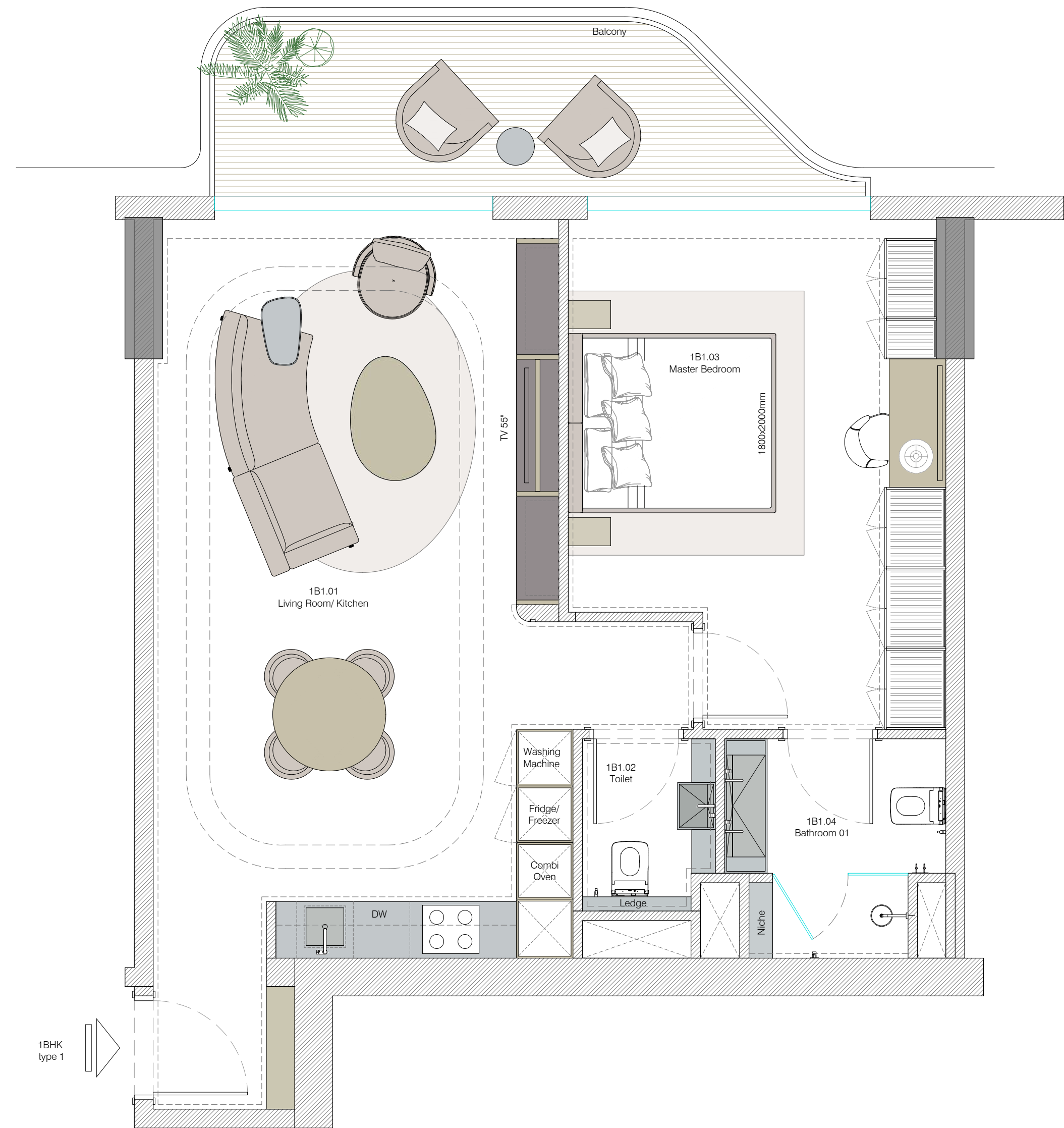
A smart and stylish layout designed for modern urban living — where comfort, function, and elegance meet in perfect balance.

## Apartment Size

from 857.14 sq ft to 922.58 sq ft  
from 79.63 sq m to 85.71 sq m

## Apartment Number

203, 204, 303, 304, 403, 404, 503, 504, 603,  
604, 703, 704, 803, 804, 903, 904, 1003, 1004,  
1103, 1104, 1203, 1204



# 1-Bedroom Residence

## Type 2

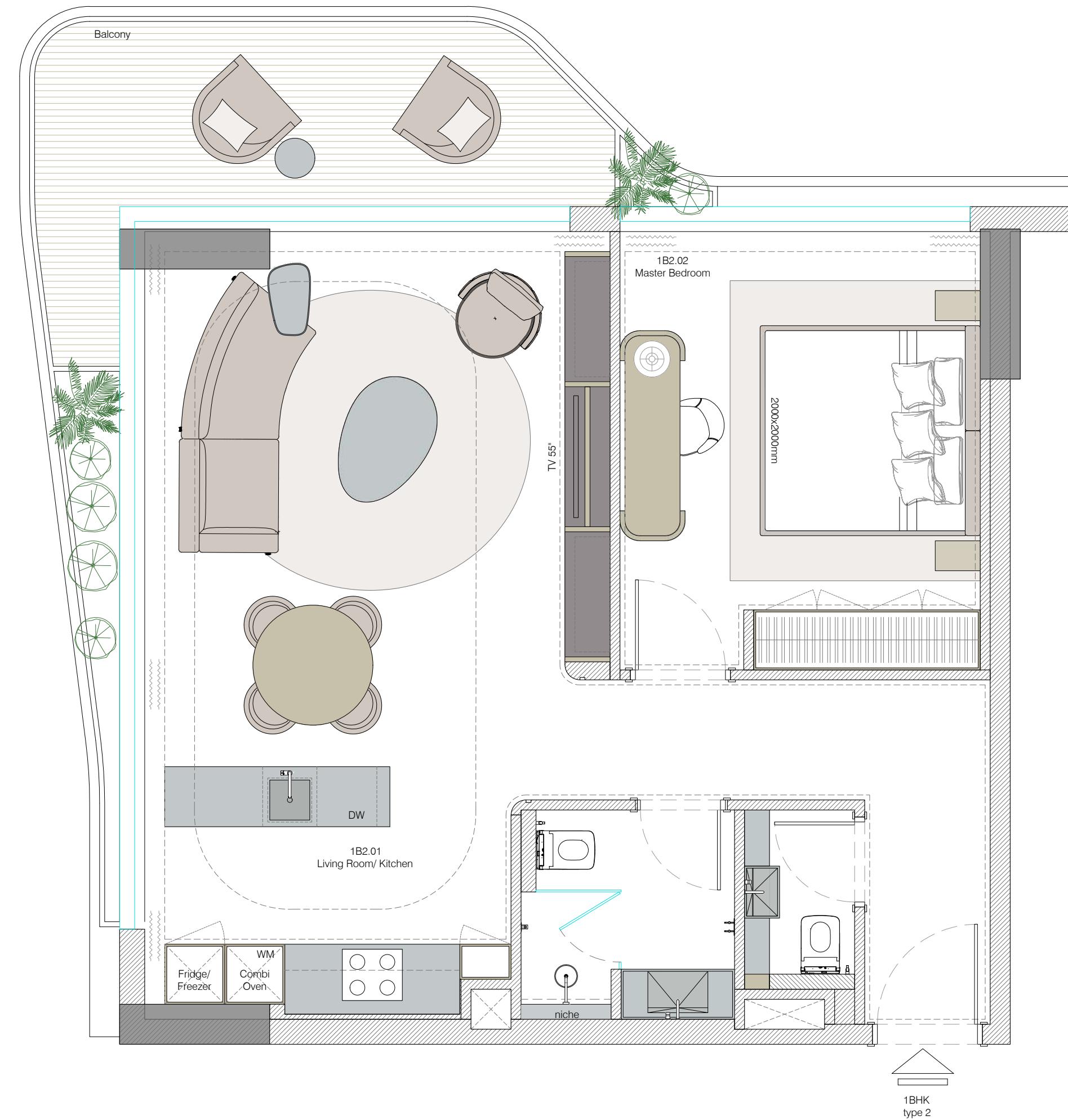
A bright and airy one-bedroom residence with an intuitive layout that maximizes space, light, and everyday comfort.

## Apartment Size

from 857.14 sq ft to 922.58 sq ft  
from 79.63 sq m to 85.71 sq m

## Apartment Number

202, 205, 302, 305, 402, 405, 502, 505, 602,  
605, 702, 705, 802, 805, 902, 905, 1002, 1005,  
1102, 1105, 1202, 1205, 1302, 1402, 1502, 1602



# 1-Bedroom Residence

## Type 3

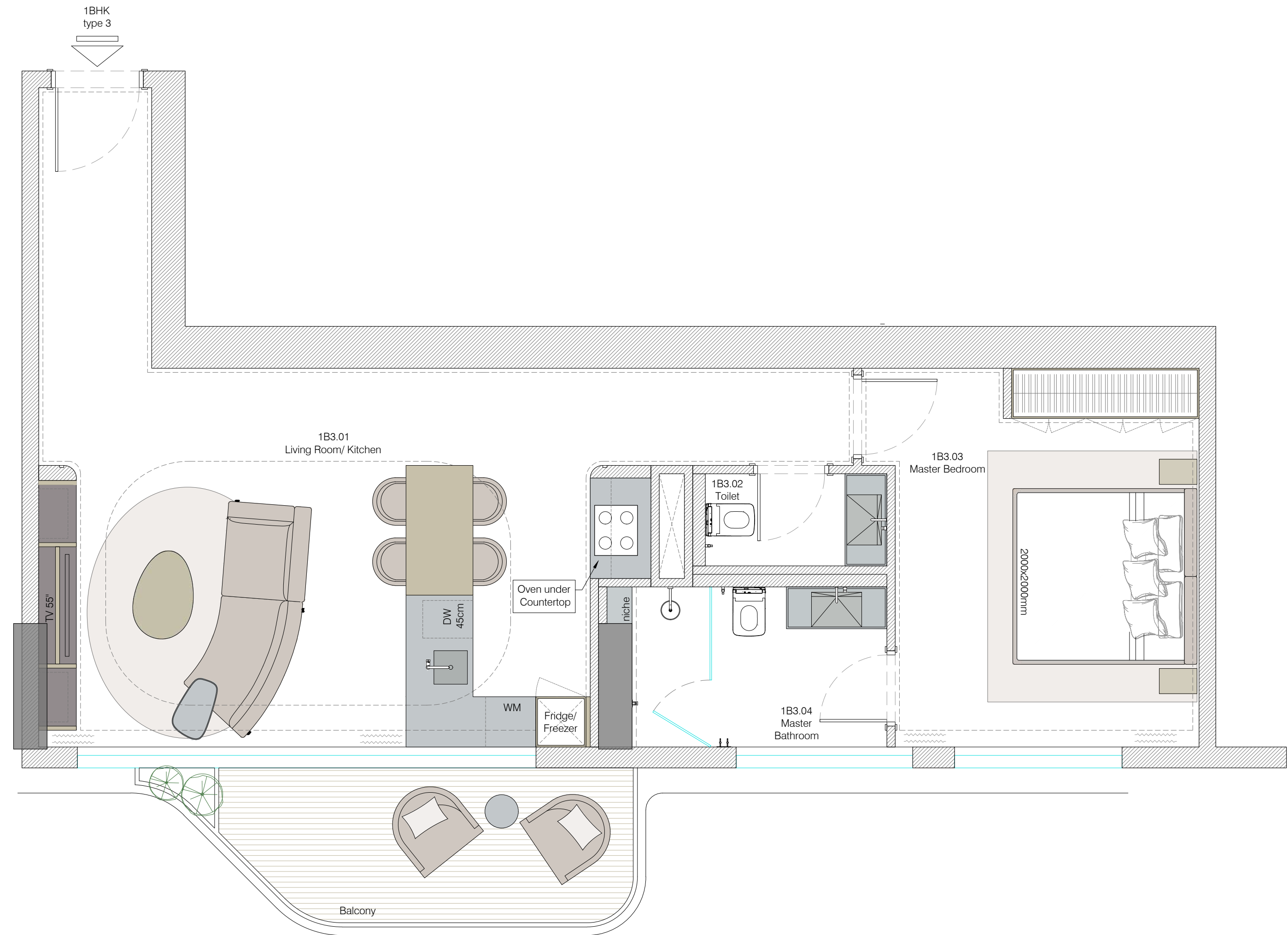
Effortless living in a perfectly composed one-bedroom apartment. Ideal for both couples and individuals searching for a modern and elegant home.

## Apartment Size

from 857.14 sq ft to 922.58 sq ft  
from 79.63 sq m to 85.71 sq m

## Apartment Number

207, 307, 407, 507, 607, 707, 807, 907, 1007,  
1107, 1207, 1306, 1406, 1506, 1606



## 2-Bedroom Residence

### Type 1

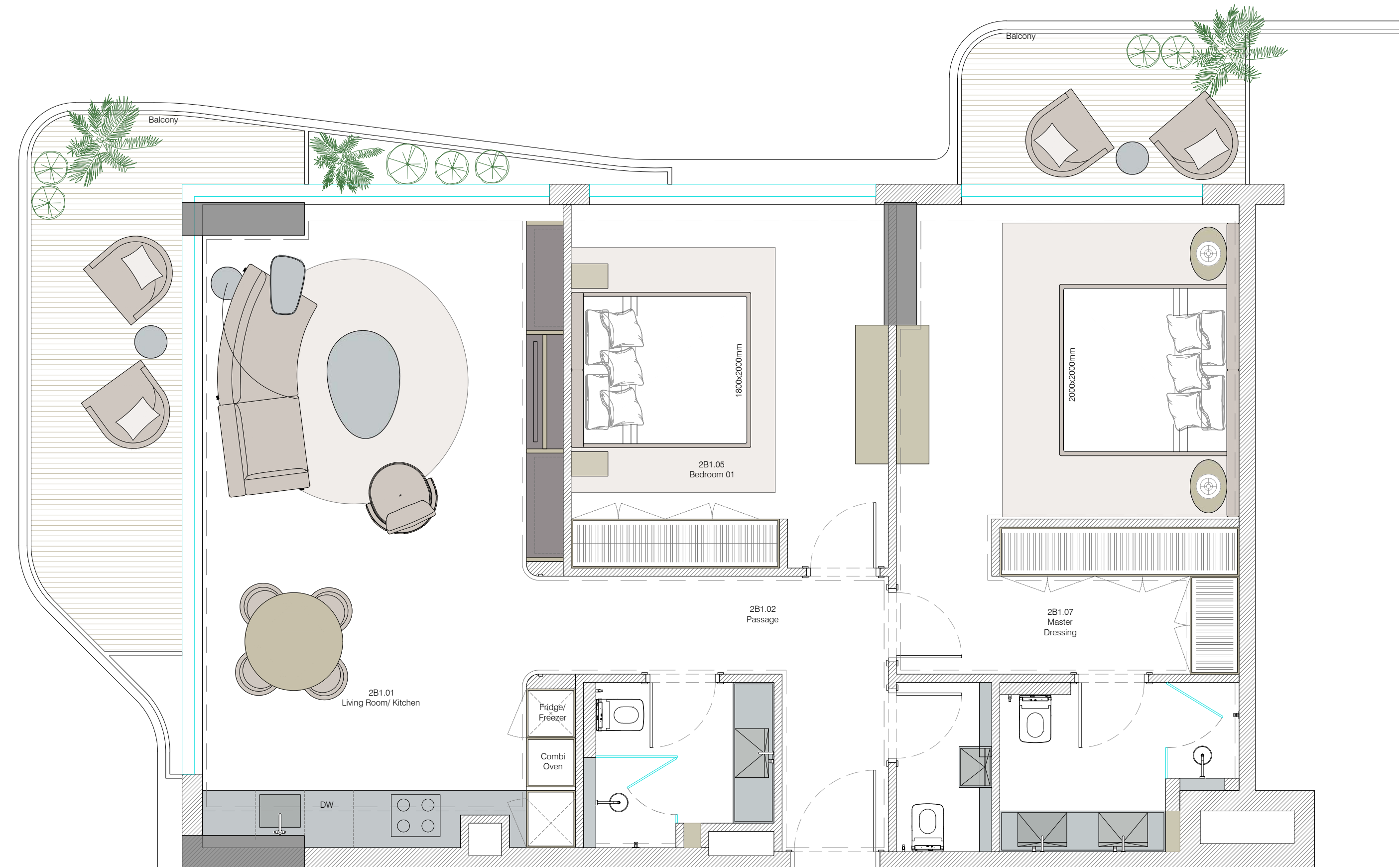
Generous proportions and a thoughtful flow make this two-bedroom apartment ideal for couples, small families, or anyone seeking flexible, elevated living.

### Apartment Size

from 1218.59 sq ft to 1365.31 sq ft  
from 113.21 sq m to 126.84 sq m

### Apartment Number

1304, 1404, 1504, 1604



## 2-Bedroom Residence

### Type 2

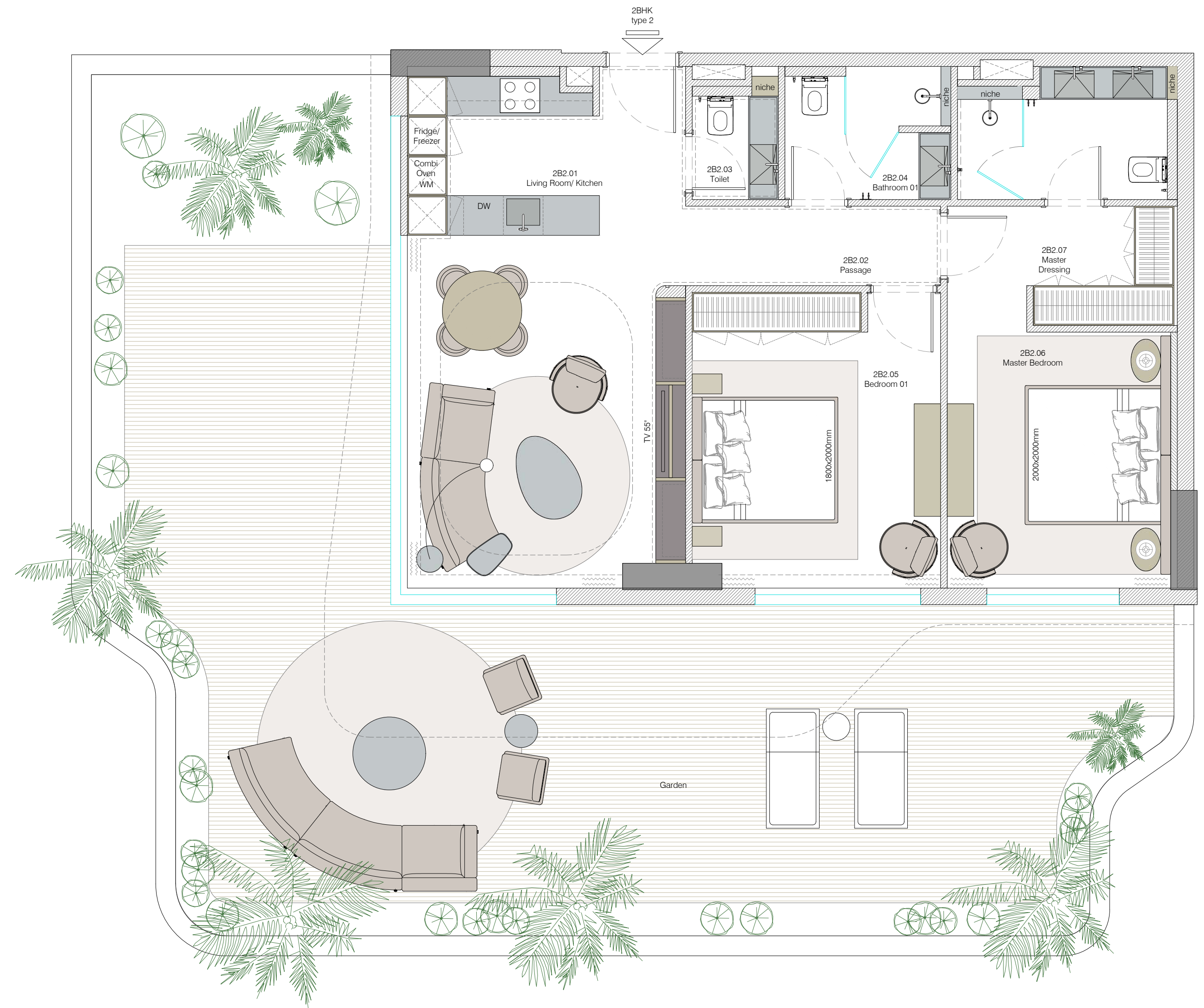
Room to grow, style to live. This special-edition two-bedroom apartment features a private garden — perfect for enjoying a refined outdoor lifestyle.

### Apartment Size

2271.31 sq ft / 211.01 sq m

### Apartment Number

103,  
The same suite layout with balcony  
(1218.59 sq ft / 113.21 sq m): 206, 306, 406, 506, 606,  
706, 806, 906, 1006, 1106, 1206, 1305, 1405, 1505, 1605



## 2-Bedroom Residence

### Type 3

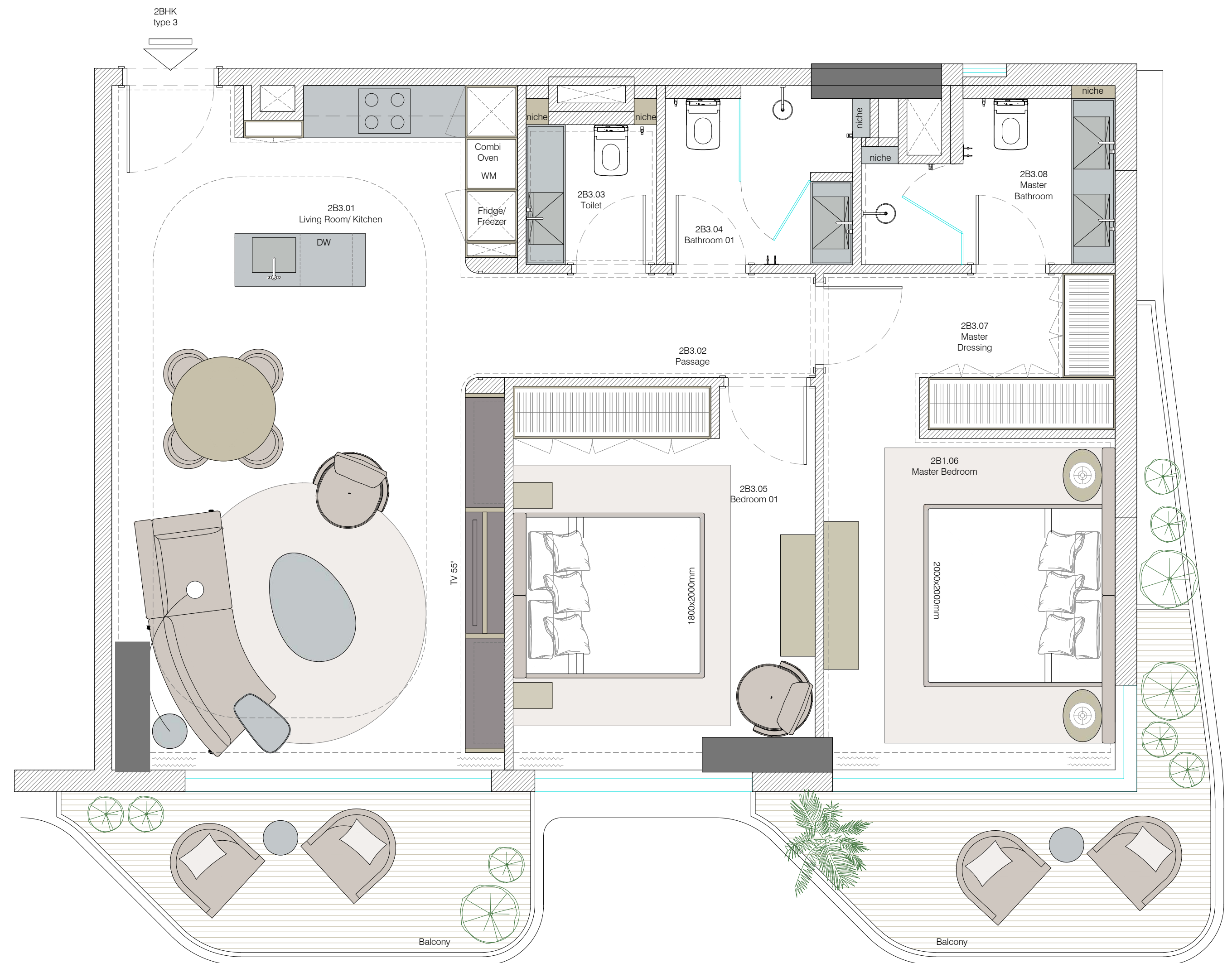
A spacious and thoughtfully designed two-bedroom apartment with contemporary interiors and two private balconies that invite light and fresh air into everyday life.

### Apartment Size

from 1218.59 sq ft to 1365.31 sq ft  
from 113.21 sq m to 126.84 sq m

### Apartment Number

201, 301, 401, 501, 601, 701, 801, 901, 1001, 1101,  
1201, 1301, 1303, 1401, 1403, 1501, 1503,  
1601, 1603



## 3-Bedroom Residence

### Type 1

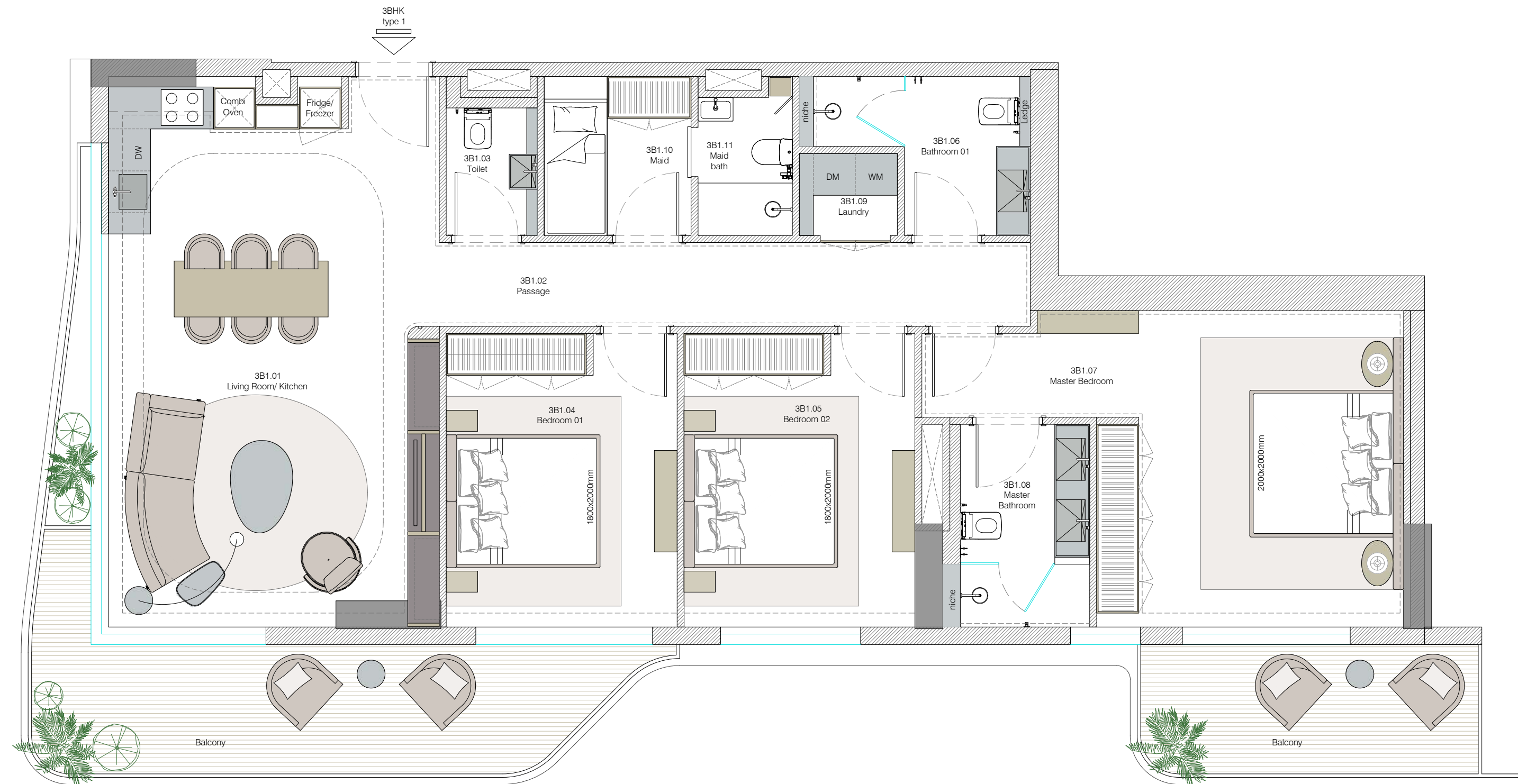
Expansive interiors, multiple balconies, and the luxury of space — these three-bedroom apartments are designed for those who live without compromise.

### Apartment Size

1735.59 sq ft / 161.24 sq m

### Apartment Number

1704



## 3-Bedroom Residence

### Type 2

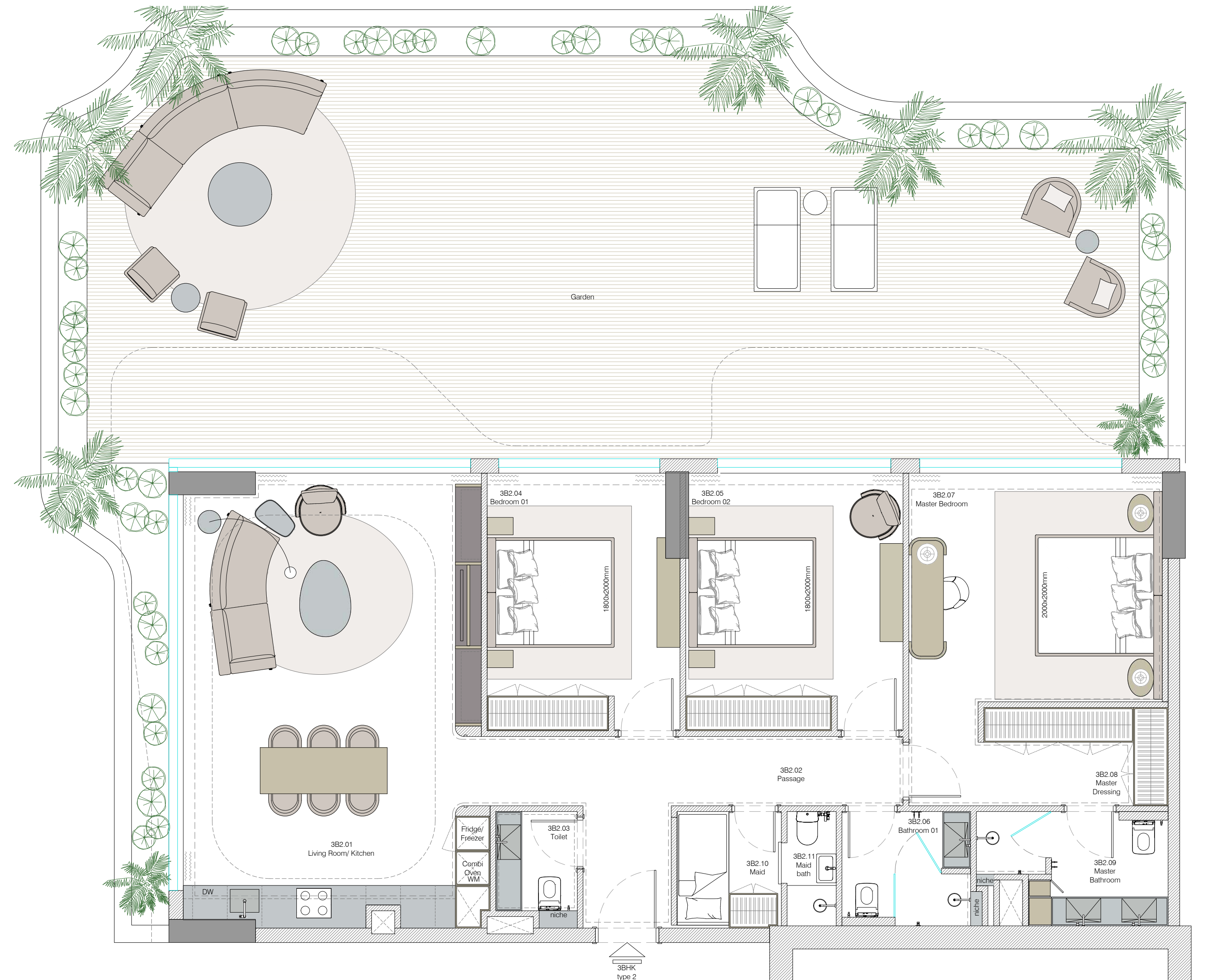
Experience luxury in a three-bedroom apartment with a private garden. This limited collection includes just three exclusive residences, each offering a villa-like ambience.

### Apartment Size

3090.99 sq ft / 287.16 sq m

### Apartment Number

101, 102,  
The same suite layout with balcony  
(1808 sq ft / 168.04 sq m): 1702, 1703



## 3-Bedroom Residence

### Type 3

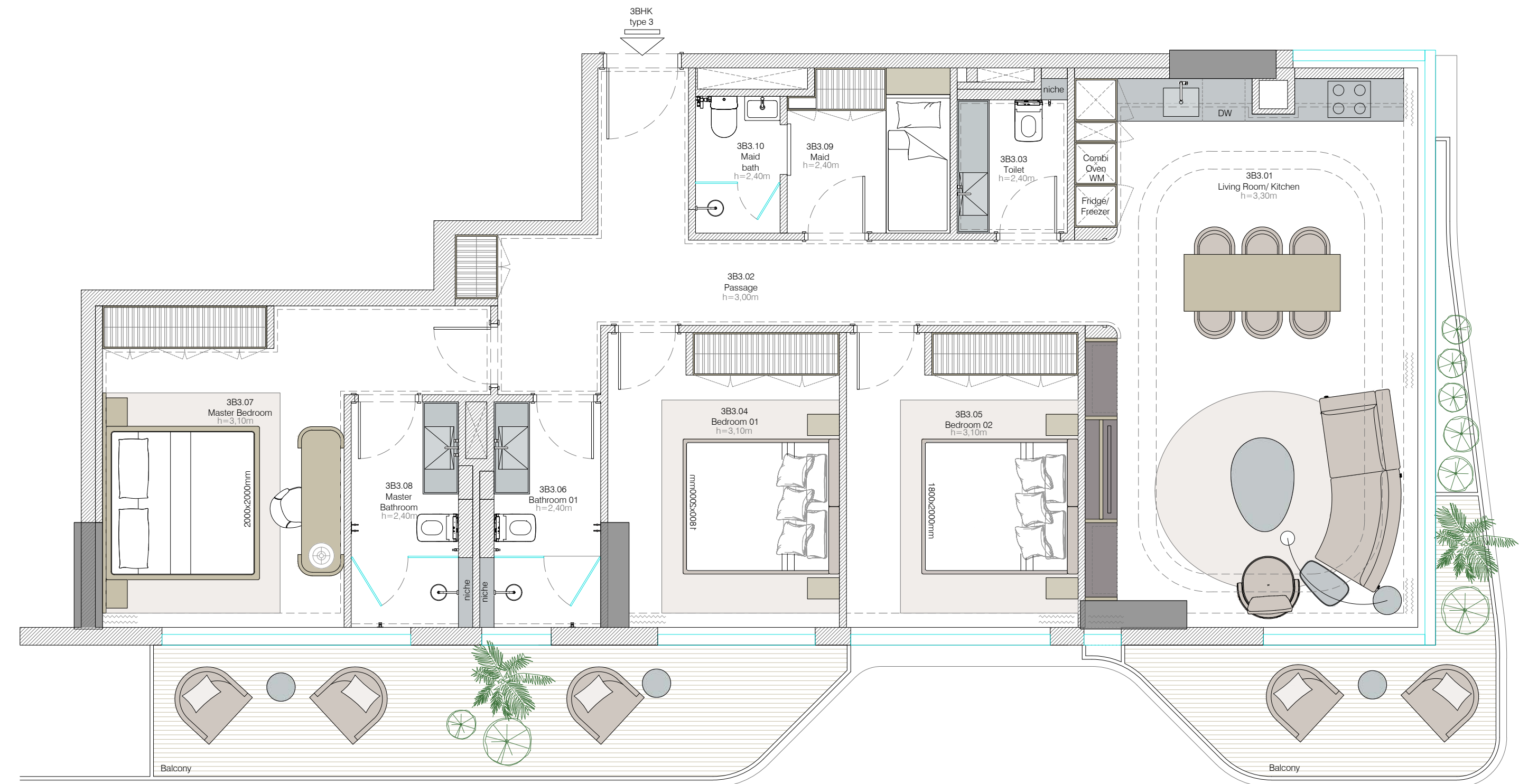
Top-floor three-bedroom residences represent the pinnacle of elevated living. Enjoy panoramic views from sophisticated interiors marked by elegance and refinement.

### Apartment Size

1720.49 sq ft / 159.84 sq m

### Apartment Number

1701





# *Floor Plans*

# FLOOR PLAN

## FLOOR 1

### 2 BR

03 / 2BR  
Units: 103  
Saleable size: 211.01 sq.m / 2271.31 sq.ft

### 3 BR

01 / 3BR  
Units: 101  
Saleable size: 278.70 sq.m / 2999.93 sq.ft

02 / 3BR  
Units: 102  
Saleable size: 287.16 sq.m / 3090.99 sq.ft



Ras Al Khor



LAGOON &  
STREETFRONT



Burj Khalifa

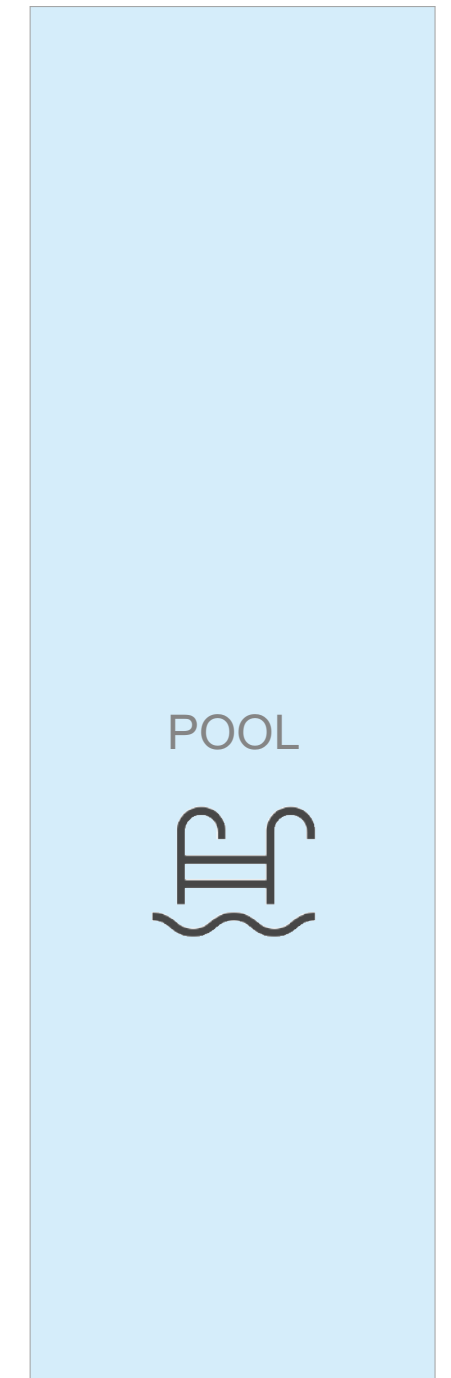


GARDEN



# HELVETIA *verde*

Dubai Creek



POOL



Meydan Race Course



AMENITIES & GARDEN



# FLOOR PLAN

FLOORS 2,4,6,8,10 &12

## 1 BR

02 / 1BR

Units: 202, 402, 602, 802, 1002, 1202

Saleable size: 83.93 sq.m / 903.42 sq.ft

03 / 1BR

Units: 203, 403, 603, 803, 1003, 1203

Saleable size: 79.63 sq.m / 857.14 sq.ft

04 / 1BR

Units: 204, 404, 604, 804, 1004, 1204

Saleable size: 82.56 sq.m / 888.68 sq.ft

05 / 1BR

Units: 205, 405, 605, 805, 1005, 1205

Saleable size: 83.24 sq.m / 896.00 sq.ft

07 / 1BR

Units: 207, 407, 607, 807, 1007, 1207

Saleable size: 82.26 sq.m / 885.45 sq.ft

## 2 BR

01 / 2BR

Units: 201, 401, 601, 801, 1001, 1201

Saleable size: 113.82 sq.m / 1225.16 sq.ft

06 / 2BR

Units: 206, 406, 606, 806, 1006, 1206

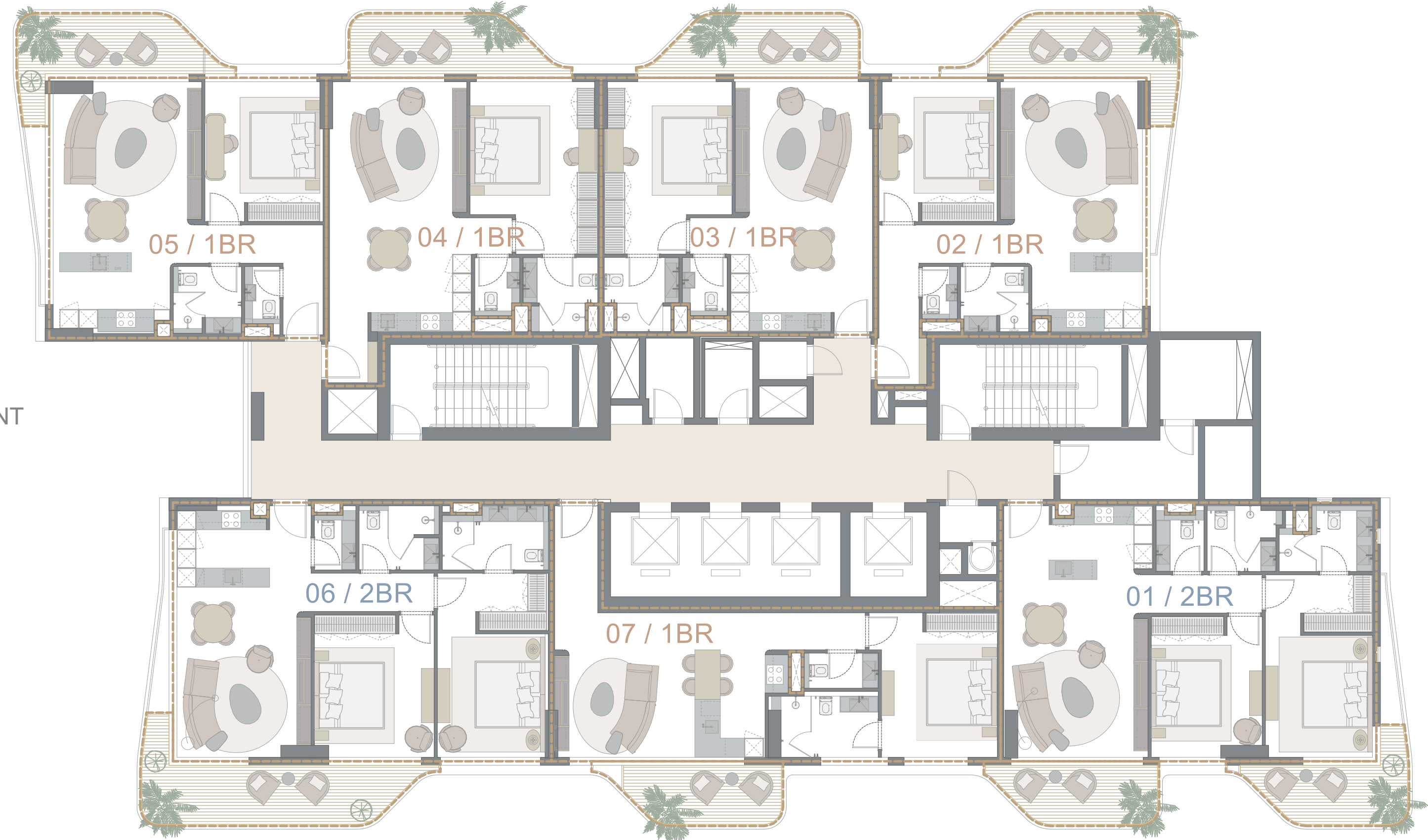
Saleable size: 113.21 sq.m / 1218.59 sq.ft



Ras Al Khor



Dubai Creek



LAGOON &  
STREETFRONT



POOL



AMENITIES & GARDEN



Burj Khalifa



Meydan Race Course



# HELVETIA *verde*

# FLOOR PLAN

FLOORS 3,5,7,9 &11

## 1 BR

02 / 1BR

Units: 302, 502, 702, 902, 1102

Saleable size: 85.71 sq.m / 922.58 sq.ft

03 / 1BR

Units: 303, 503, 703, 903, 1103

Saleable size: 79.63 sq.m / 857.14 sq.ft

04 / 1BR

Units: 304, 504, 704, 904, 1104

Saleable size: 82.56 sq.m / 888.68 sq.ft

05 / 1BR

Units: 305, 505, 705, 905, 1005

Saleable size: 85.18 sq.m / 916.88 sq.ft

07 / 1BR

Units: 307, 507, 707, 907, 1107

Saleable size: 82.26 sq.m / 885.45 sq.ft

## 2 BR

01 / 2BR

Units: 201, 401, 601, 801, 1001, 1201

Saleable size: 113.82 sq.m / 1225.16 sq.ft

06 / 2BR

Units: 206, 406, 606, 806, 1006, 1206

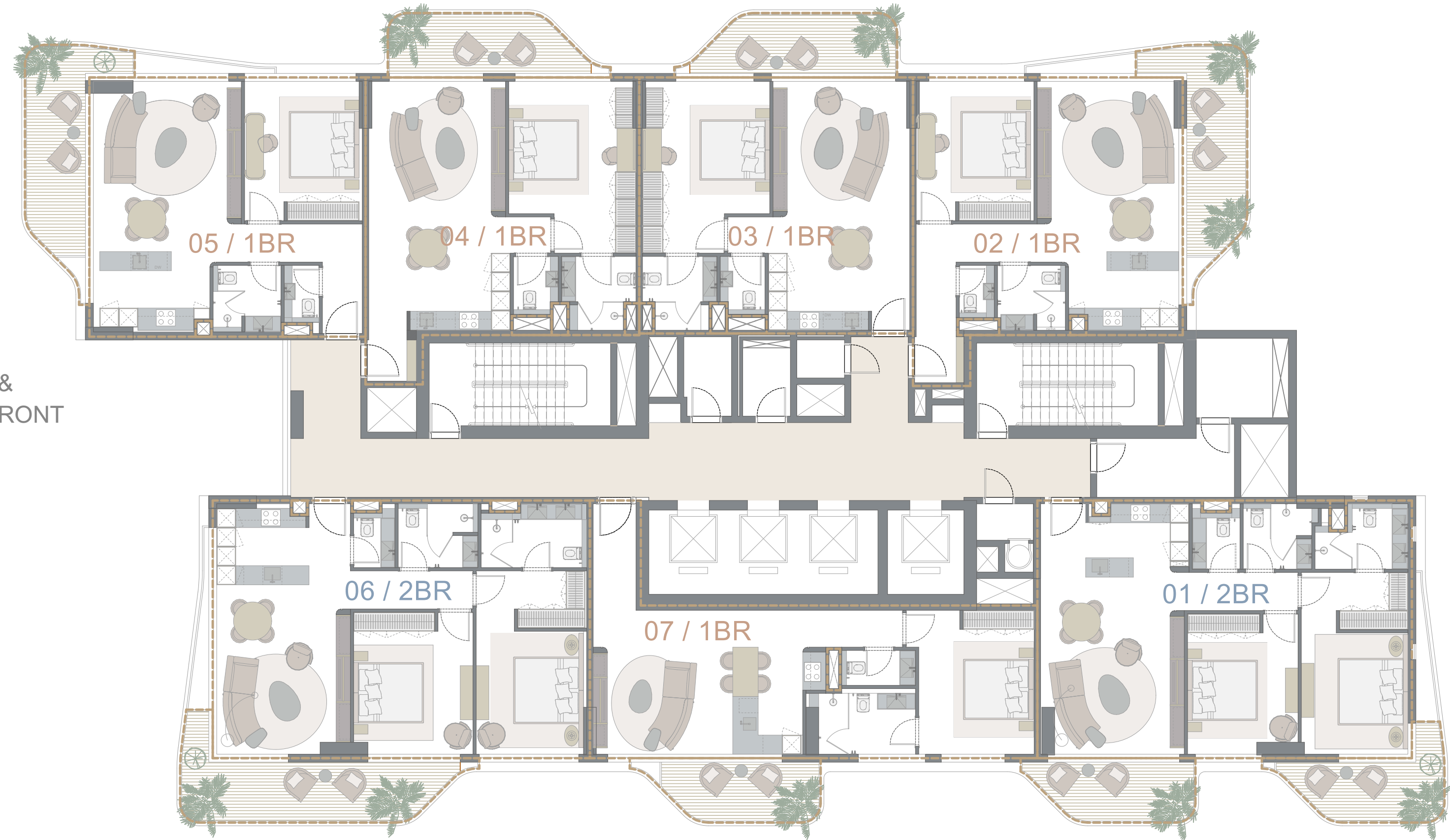
Saleable size: 113.21 sq.m / 1218.59 sq.ft



Ras Al Khor



Dubai Creek



LAGOON &  
STREETFRONT



POOL



AMENITIES & GARDEN



Burj Khalifa



Meydan Race Course



# HELVETIA

verde

# FLOOR PLAN

## FLOORS 13 & 15

### 1 BR

02 / 1BR  
Units: 1302,1502  
Saleable size: 85.71 sq.m / 922.58 sq.ft

06 / 1BR  
Units: 1306,1506  
Saleable size: 82.26 sq.m / 885.45 sq.ft

### 2 BR

01 / 2BR  
Units: 1301,1501  
Saleable size: 114.40 sq.m / 1231.40 sq.ft

03 / 2BR  
Units: 1303,1503  
Saleable size: 122.50 sq.m / 1318.59 sq.ft

04 / 2BR  
Units: 1304,1504  
Saleable size: 126.84 sq.m / 1365.31 sq.ft

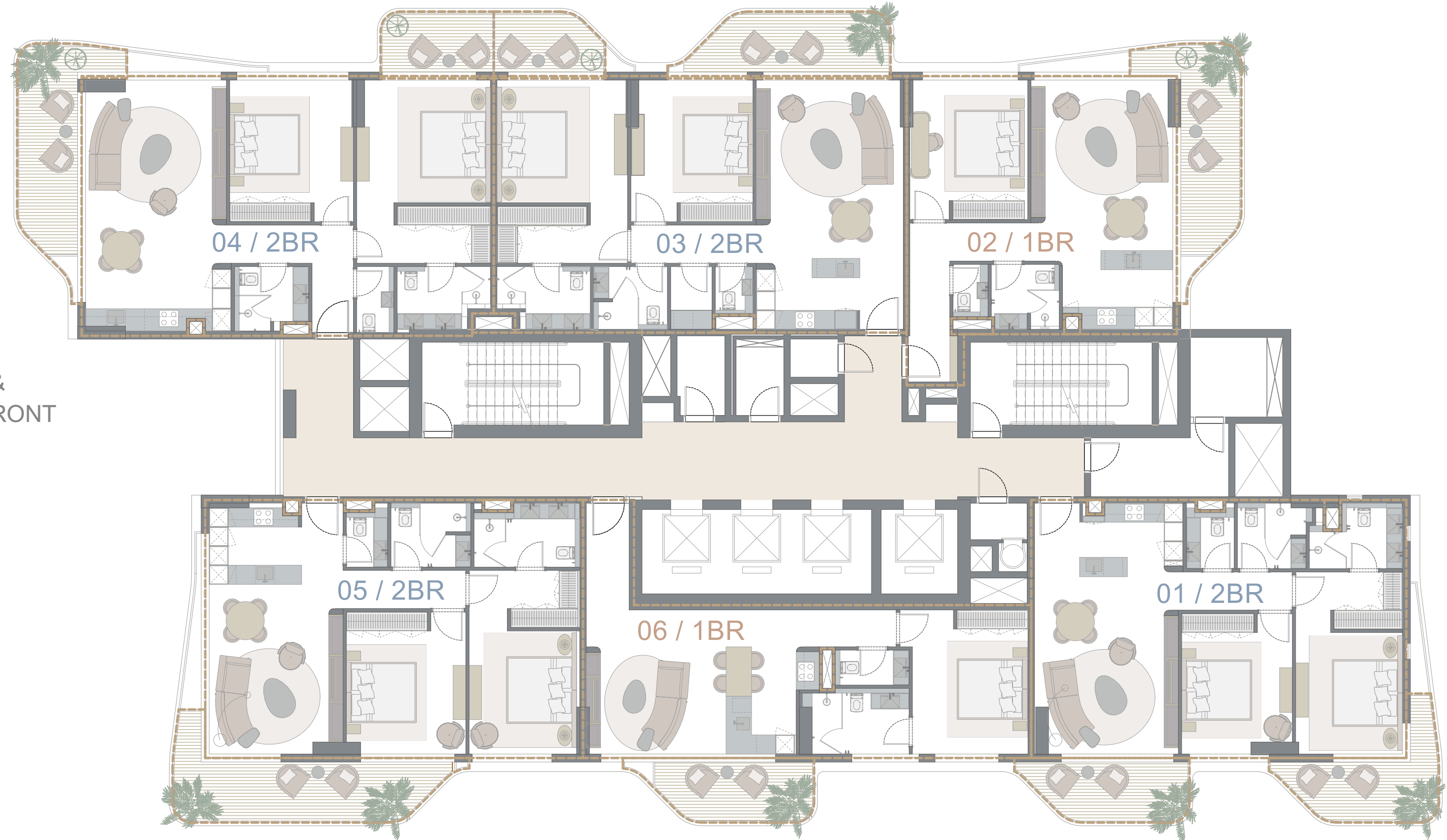
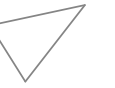
05 / 2BR  
Units: 1305,1505  
Saleable size: 113.21 sq.m / 1218.27 sq.ft



Ras Al Khor



Dubai Creek



LAGOON & STREETFRONT



POOL



AMENITIES & GARDEN



Burj Khalifa



Meydan Race Course



# HELVETIA *verde*

# FLOOR PLAN

## FLOORS 14 & 16

### 1 BR

02 / 1BR

Units: 1402,1602

Saleable size: 83.93 sq.m / 903.42 sq.ft

06 / 1BR

Units: 1406,1606

Saleable size: 82.26 sq.m / 885.45 sq.ft

### 2 BR

01 / 2BR

Units: 1401,1601

Saleable size: 114.40 sq.m / 1231.40 sq.ft

03 / 2BR

Units: 1403,1603

Saleable size: 121.72 sq.m / 1310.20 sq.ft

04 / 2BR

Units: 1404,1604

Saleable size: 124.54 sq.m / 1340.55 sq.ft

05 / 2BR

Units: 1405,1605

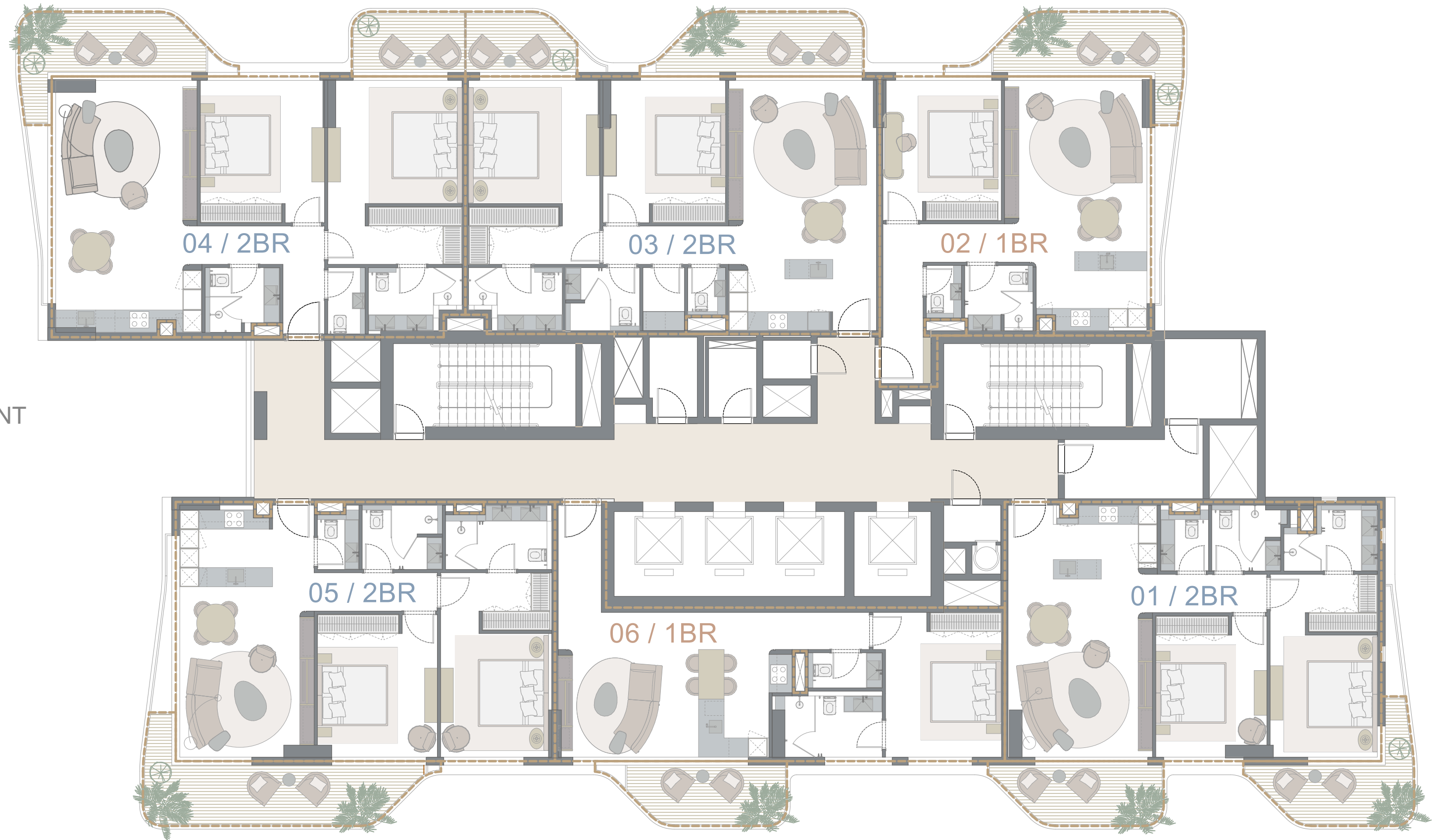
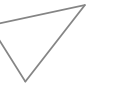
Saleable size: 113.18 sq.m / 1218.27 sq.ft



Ras Al Khor



Dubai Creek



LAGOON & STREETFRONT



POOL



AMENITIES & GARDEN



Burj Khalifa



Meydan Race Course



# HELVETIA *verde*

# FLOOR PLAN

## FLOOR 17

### 3 BR

01 / 3BR  
Units: 1701  
Saleable size: 159.47 sq.m / 1716.53 sq.ft

02 / 3BR  
Units: 1702  
Saleable size: 169.16 sq.m / 1820.84 sq.ft

03 / 3BR  
Units: 1703  
Saleable size: 170.71 sq.m / 1837.52 sq.ft

04 / 3BR  
Units: 1702  
Saleable size: 161.24 sq.m / 1735.59 sq.ft

# HELVETIA *verde*

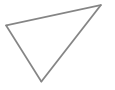


Ras Al Khor



GARDEN

Dubai Creek



LAGOON &  
STREETFRONT



POOL



AMENITIES & GARDEN



Burj Khalifa



Meydan Race Course





# *Amenities Plan*

## Living Beyond Expectations

Designed for modern living, our refined amenities create opportunities for relaxation, connection, and movement — filling each day with purpose and pleasure.

- 1 Swimming pool
- 2 Sun loungers & pool bar
- 3 Indoor gym
- 4 Outdoor gym
- 5 Jogging track
- 6 Yoga & meditation area
- 7 Garden with picnic area
- 8 Kids' playground

Besides amenities on the 1st floor, the ground floor features:

- Retail space
- Lobby with concierge & 24h CCTV



# HELVETIA *verde*

ALL FLOOR PLANS, LAYOUTS, DIMENSIONS, AND CONFIGURATIONS PRESENTED ARE FOR ILLUSTRATIVE PURPOSES ONLY AND ARE SUBJECT TO CHANGE WITHOUT PRIOR NOTICE. THE DEVELOPER RESERVES THE RIGHT TO MAKE MODIFICATIONS DURING THE DESIGN AND CONSTRUCTION PHASES IN ACCORDANCE WITH APPROVALS FROM THE RERA AND THE DLD. FURNITURE, FIXTURES, AND LANDSCAPING SHOWN IN THE PLANS ARE FOR DEMONSTRATION ONLY AND MAY NOT BE INCLUDED IN THE FINAL DELIVERED UNIT.