

THE LUXURY COLLECTION

RESIDENCES

AL MARJAN ISLAND

Abu Dhabi National Hotels  أبو ظبي الوطنية للفنادق

NASIM AL BAHR RESORT AND RESIDENCES



EACH NOTE OF THE SEA
BECOMES PART
OF A LARGER TEMPO,
WHERE LAND AND HORIZON
SPEAK IN HARMONY.

1
INTRODUCTION

5
CONTEXT

9
INSPIRATION

16
THE HOTEL

17
AMENITIES

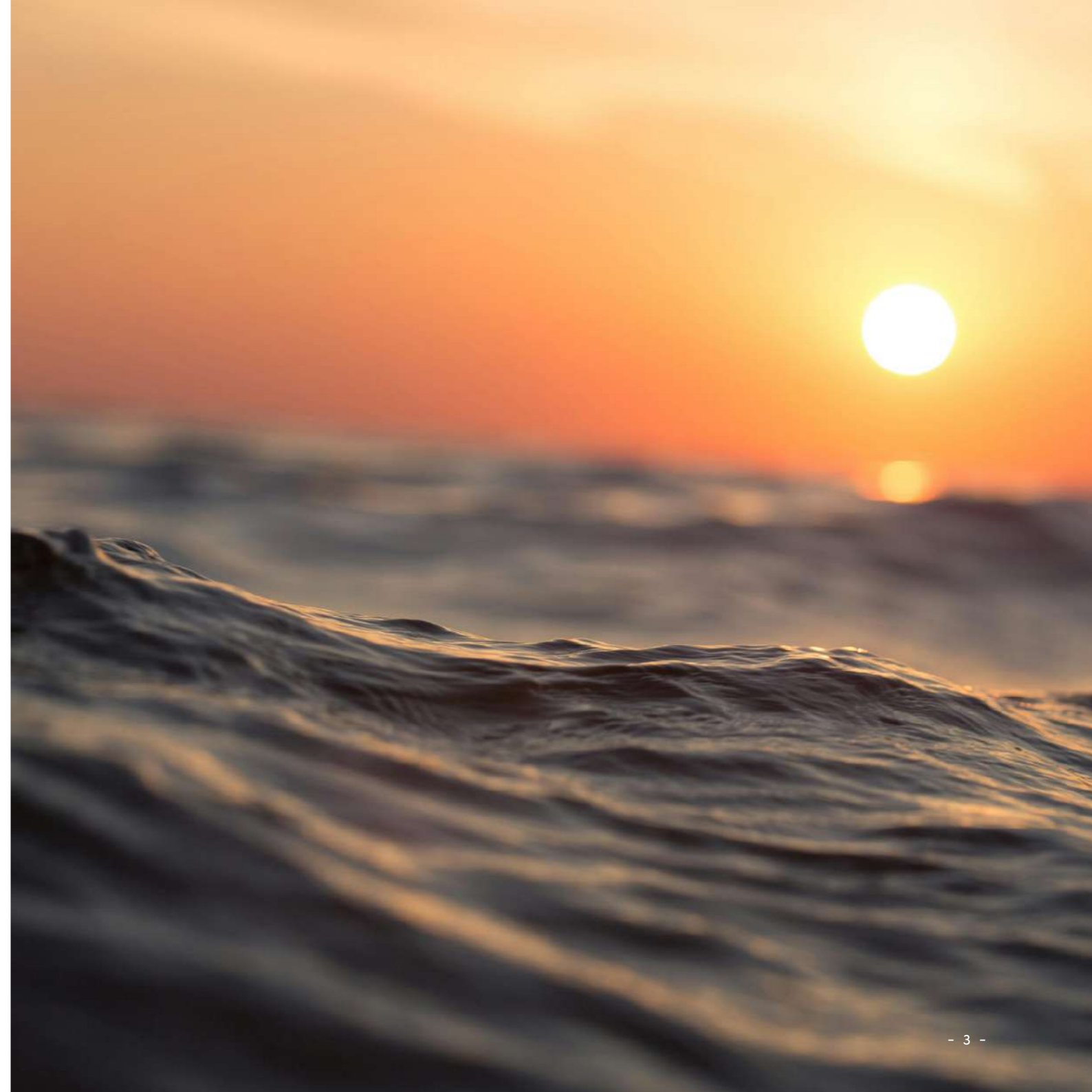
26
PRIVILEGES

27
RESIDENCES

43
PROJECT FACTS

44
A D N H

47
SALES PARTNER





THE BREEZE MOVES THROUGH RAS AL KHAIMAH
CARRYING STORIES OF TRADITIONS AND LIGHT.

EACH NOTE OF THE SEA BECOMES PART OF A LARGER
TEMPO, WHERE LAND AND HORIZON SPEAK IN
HARMONY.

FROM THIS DIALOGUE, A NEW DESTINATION OF
HOSPITALITY EMERGES, SHAPED BY HERITAGE AND
ARTISTRY, FORMED BY EVERY GRAIN OF SAND
AND GLIMMER OF WATER.





RAS AL KHAIMAH



RAS AL KHAIMAH CARRIES A NATURAL GRACE,
SHAPED BY GOLDEN COASTS AND PALM VALLEYS.

MORNINGS UNFOLD IN SOFT LIGHT OVER THE
DESERT, AFTERNOONS DRIFT TOWARD CALM
WATERS, AND EVENINGS GATHER AROUND SHARED
TABLES AND OPEN AIR.

A STEADY SENSE OF GROWTH MOVES THROUGH
THE EMIRATE, ROOTED IN HERITAGE AND SHAPED
BY MEASURED PROGRESS, OFFERING A PLACE
WHERE TRADITION AND OPPORTUNITY
LIVE SIDE BY SIDE.





STRETCHING INTO THE ARABIAN GULF, AL MARJAN ISLAND
CARRIES THE SPIRIT OF THE SEA AND THE PROMISE OF ADVENTURE.



AL MARJAN ISLAND

RAS AL KHAIMAH'S MOST CAPTIVATING ADDRESS



DAYS HERE MOVE GENTLY BETWEEN CAFÉS BY THE MARINA, GARDENS OVERLOOKING THE COAST, AND THE STEADY PACE OF THE CITY BEYOND, FILLED WITH THE SCENT OF SALT AIR AND THE HUM OF ALLURE FROM UAE'S FIRST INTEGRATED RESORT, A LANDMARK OF EXPERIENCE AND ENTERTAINMENT.

EXCLUSIVE BEACHFRONT RESORTS AND CLUBS

WATERFRONT PROMENADE FOR RUNNING AND CYCLING

GREEN TRAILS AND PARKS

JET-SKIING, KAYAKING, AND OTHER WATER SPORTS

THE REGION'S LARGEST ENTERTAINMENT RESORT OPENING

Q1 2027, WITH 4 MILLION ANNUAL PROJECTED VISITORS



BETWEEN
THE CITY, THE SEA,
AND THE SKY

- UAE'S FIRST INTEGRATED RESORT – 05 mins.
- MARJAN CENTRAL – 05 mins.
- AL HAMRA GOLF CLUB – 15 mins.
- RAK INTERNATIONAL AIRPORT – 30 mins.
- DXB INTERNATIONAL AIRPORT – 60 mins.





NASIM AL BAHR / NUH-SEEM AL BAHAR / نسيم البحر – THE BREEZE OF THE SEA.
A PRIVATE BAY THAT IS HOME TO THE LUXURY COLLECTION RESIDENCES - AL MARJAN ISLAND.
THE ESSENCE OF CALM WINDS AND SHIFTING TIDES.
BRINGING THE SOUL OF THE COAST IN EVERY BREATH OF WIND.



ALONG THIS BAY, THE THE LUXURY
COLLECTION'S RESIDENTIAL TOWER
RISES, OFFERING ONE TO FIVE-BEDROOM
APARTMENTS AND PENTHOUSES WITH
PANORAMIC SEA VIEWS.



A SELECT NUMBER OF VILLAS AND TOWNHOUSES EXTEND THE
EXPERIENCE CLOSER TO THE WATER, BLENDING EXCLUSIVITY
WITH THE SERENITY OF THE BAY.

TOGETHER, THEY EMBODY THE PRESTIGE OF THE LUXURY
COLLECTION AND ADNH'S LEGACY IN DEFINING EXCEPTIONAL
HOSPITALITY ACROSS THE EMIRATES.





THE VIEWS
A COMPASS FOR THE SOUL



THE ARABIAN GULF
NASIM AL BAHR RESORT
THE PRIVATE BAY
AL MARJAN ISLAND
MARJAN CENTRAL
UAE'S FIRST INTEGRATED RESORT
JEBEL JAIS







THE DESTINATION WITHIN THE DESTINATION



THE LUXURY COLLECTION RESIDENCES REFLECTS THE ESSENCE OF LIVING IN A DESTINATION WITHIN ANOTHER.

RESIDENTS ENJOY FULL ACCESS TO ALL HOTEL AND RESIDENTIAL AMENITIES, SURROUNDED BY THE GENTLE MOVEMENT OF THE SEA BREEZE THAT MOVES THROUGH NASIM AL BAHR.

IT FLOWS THROUGH EVERY SPACE AS A CONSTANT REMINDER OF THE BEAUTY OF THE PLACE, CARRYING WITH IT THE SERENITY, VITALITY, AND ALLURE THAT MAKE THIS DESTINATION UNLIKE ANY OTHER.







THE HOTEL AT NASIM AL BAHR

A BENCHMARK IN HOSPITALITY

AT THE CENTER OF NASIM AL BAHR BAY, THE LUXURY RESORT REPRESENTS THE ESSENCE OF ELEVATED HOSPITALITY, DRAWING ON ADNH'S LEGACY OF SERVICE EXCELLENCE AND OFFERING GUESTS AND RESIDENTS ACCESS TO A WORLD-CLASS RESORT EXPERIENCE.





EXCLUSIVE AMENITIES
FOR RESIDENTS



DINING & LOUNGE

- LOBBY LOUNGE BAR
- LOBBY CAFE
- SPECIALITY RESTAURANT
- POOL RESTAURANT
- POOL BAR
- KIOSK LOUNGE







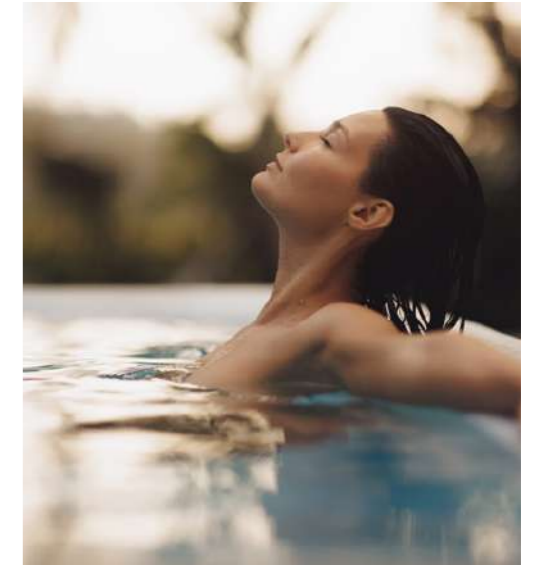


EXCLUSIVE AMENITIES
FOR RESIDENTS



WELLNESS & RECREATION

- SPA
- GYM
- INDOOR PADEL
- POOL









EXCLUSIVE AMENITIES
FOR RESIDENTS



ENTERTAINMENT & SOCIAL

- GAMES ROOM
- SCREENING ROOM
- MULTIPURPOSE HALL
- KIDS' AREA









ONVIA

PRIVILEGES EXCLUSIVE FOR OWNERS

PREFERRED RATES AT MARRIOTT PROPERTIES WORLDWIDE
PRIORITY ACCESS TO CURATED TRAVEL AND LUXURY LIFESTYLE OFFERS
DEDICATED CONCIERGE SERVICES FOR OWNERS
ELITE STATUS ACROSS MORE THAN 7,000 HOTELS WORLDWIDE
ROOM UPGRADES AND LATE CHECK-OUTS
REDEEMABLE POINTS FOR STAYS, FLIGHTS, AND EXPERIENCES



AN EXCLUSIVE COMMUNITY BY THE WATER'S EDGE RISING BESIDE THE RESORT, THE LUXURY COLLECTION RESIDENCES ENCOMPASSES A CURATED COLLECTION OF FULLY FURNISHED AND EQUIPPED RESIDENCES, VILLAS, AND TOWNHOUSES THAT REFLECT THEIR SURROUNDINGS AND MIRROR THE QUALITY AND CHARACTER OF THE HOTEL THEY ADJOIN.



WIDEST RANGE OF RESIDENCES
ON AL MARJAN ISLAND



ONE TO FIVE-BEDROOM RESIDENCES
THREE-BEDROOM TOWNHOUSES
TWO AND THREE-BEDROOM PODIUM VILLAS
THREE-BEDROOM BEACH VILLAS
THREE-BEDROOM SEASIDE VILLAS
PRESIDENTIAL VILLA





THE ARCHITECTURE ANCHORING THE EXPERIENCE

THE TWO SCULPTED TOWERS OF THE LUXURY COLLECTION RESIDENCES RISE BESIDE THE WATER, STEPPING DOWN TOWARD A SEQUENCE OF VILLAS THAT TRACE THE CURVE OF THE BAY.

THE FAÇADES COMBINE GLASS, METAL, AND STONE THAT RESPOND TO LIGHT AND ORIENTATION.

EVERY SURFACE INTERACTS WITH ITS SURROUNDINGS, CREATING A VISUAL RELATIONSHIP BETWEEN THE SEA, THE SKY, AND THE ARCHITECTURE ITSELF.



IMPECCABLE BALANCE OF LIGHT AND BREEZE



THE MASTER PLAN OF THE LUXURY COLLECTION RESIDENCES IS ORIENTED TO CAPTURE SUNRISE AND SUNSET, GUIDED BY THE NATURAL MOVEMENT OF THE WIND AND LIGHT ACROSS THE BAY.

THE DESIGN REDUCES HEAT DURING PEAK HOURS WHILE KEEPING OUTDOOR SPACES COMFORTABLE AND BRIGHT THROUGHOUT THE YEAR.

SEASONAL STUDIES ENSURE A CONSISTENT BALANCE OF SHADE AND DAYLIGHT, ENHANCING THE EFFICIENCY OF EVERY ASPECT OF THE DESIGN.





THE VISION A TAPESTRY UNFOLDED



TRAVELERS FROM AROUND THE WORLD ARE INVITED TO GATHER IN CELEBRATION. THEY STAND IN AWE BEFORE A VIBRANT TAPESTRY, WHERE HISTORY, ARTISTRY, AND NATURE ENTWINE, CREATING A TIMELESS AND CONTEMPORARY MASTERPIECE.

THIS TAPESTRY UNFOLDS THE SPIRIT OF RAS AL KHAIMAH, REIMAGINED ON AL MARJAN ISLAND WITHIN THE LUXURY COLLECTION RESIDENCES.







THE INTERIORS OF THE LUXURY COLLECTION RESIDENCES AND VILLAS ARE GUIDED BY THE IDEA OF A WOVEN LANDSCAPE, WHERE CRAFTSMANSHIP, TEXTURE, AND LIGHT COME TOGETHER ARTFULLY.

NATURAL STONE, TIMBER, AND SOFT METALLIC ACCENTS CREATE WARMTH AND DEPTH ACROSS EVERY SPACE, WHILE THE COLOR PALETTE DRAWS FROM SAND, DUNE, AND SEA TONES, GIVING THE INTERIORS A SENSE OF CONTINUITY WITH THE COASTLINE.



IN THE LOBBY, TRAVERTINE SURFACES, SCULPTED STONE, AND WOVEN TEXTURES CREATE A LAYERED COMPOSITION THAT REFLECTS THE LARGER COASTAL SETTING. NATURAL LIGHT FILTERS THROUGH DOUBLE-HEIGHT SPACES, HIGHLIGHTING CRAFTED DETAILS AND ARTWORKS THAT ANCHOR THE ARRIVAL EXPERIENCE.







THE BATHROOMS FEATURE STONE SURFACES, SOFT LIGHTING, AND PREMIUM FINISHES THAT EMPHASIZE THE VISUAL COHERENCE. MATERIALS AND FIXTURES ARE SELECTED TO CREATE A COMPOSED, TACTILE ENVIRONMENT.



KITCHENS COME FULLY EQUIPPED AND ARE DESIGNED AS OPEN, LIGHT-FILLED EXTENSIONS OF THE LIVING SPACE, WHERE SOFT LINES SHAPE THE COUNTERS AND CABINETRY. INTEGRATED SHELVING AND CONCEALED APPLIANCES CONTINUE THIS SENSE OF OPENNESS AND MAINTAIN A NEAT, UNINTERRUPTED LOOK.



THE DINING AREA SERVES AS A FOCAL POINT OF CONNECTION BETWEEN THE KITCHEN AND LIVING SPACE, WHILE OVERHEAD, SCULPTED LIGHTING CASTS A WARM GLOW, TURNING DAILY MEALS INTO INTIMATE EXPERIENCES.







THE BATHROOMS FEATURE STONE SURFACES, SOFT LIGHTING, AND PREMIUM FINISHES THAT EMPHASIZE THE VISUAL COHERENCE. MATERIALS AND FIXTURES ARE SELECTED TO CREATE A COMPOSED, TACTILE ENVIRONMENT.

PROJECT FACTS



PROJECT NAME: _____ The Luxury Collection Residences Al Marjan Island
PROJECT TYPE: _____ Residential & Mixed Use
LOCATION: _____ Al Marjan Island, Ras Al Khaimah
CONFIGURATION: _____ Residences: 2B+G+19

UNIT TYPES & AREA

- 147 One-Bedroom Residences _____ 965 SQ. FT.
- 154 Two-Bedroom Residences _____ 1,382 SQ. FT.
- 79 Three-Bedroom Residences _____ 2,071 SQ. FT.
- 8 Four-Bedroom Residences _____ 3,079 SQ. FT.
- 4 Five-Bedroom Residences _____ 4,006 SQ. FT.
- 10 Three-Bedroom Townhouses _____ 2,828 SQ. FT.
- 6 Two-Bedroom Podium Villas _____ 5,506 SQ. FT.
- 16 Three-Bedroom Beach Villas _____ 3,071 SQ. FT.
- 4 Three-Bedroom Seaside Villas _____ 3,079 SQ. FT.
- 18 Three-Bedroom Podium Villas _____ 5,693 SQ. FT.
- 1 Presidential Villa _____ 11,697 SQ. FT.

TOTAL UNITS

392 Residences **55** Villas & Townhouses

PAYMENT PLAN

40 | 60 _____ RESIDENCES

30 | 70 _____ VILLAS AND TOWNHOUSES

HANDOVER _____ **Q1 2028**



ESTABLISHED IN 1976, ABU DHABI NATIONAL HOTELS (ADNH) HAS GROWN FROM A HOTEL OWNER AND ASSET MANAGER INTO ONE OF THE UAE'S MOST COMPREHENSIVE HOSPITALITY GROUPS.

HEADQUARTERED IN ABU DHABI, THE COMPANY OPERATES ACROSS HOTEL MANAGEMENT, CATERING, TRANSPORT, AND FACILITY SERVICES.



THE LUXURY COLLECTION RESIDENCES
AL MARJAN ISLAND REPRESENTS ITS FIRST
OFF-PLAN PROJECT, MARKING A STRATEGIC STEP
INTO PREMIUM REAL ESTATE DEVELOPMENT.

THIS MILESTONE REFLECTS THE GROUP'S ENDURING
COMMITMENT TO INNOVATION, QUALITY, AND THE
CREATION OF DESTINATIONS THAT EMBODY THE
UAE'S SPIRIT OF PROGRESS.





AN AWARD-WINNING REAL ESTATE AGENCY, ONE BROKER GROUP (OBG) IS THE EXCLUSIVE SALES PARTNER FOR THE LUXURY COLLECTION RESIDENCES.

RECOGNIZED BY THE DUBAI LAND DEPARTMENT AS THE HIGHEST-PERFORMING BROKERAGE IN 2022, OBG IS A MARKET LEADER IN PRESTIGIOUS RESIDENTIAL AND COMMERCIAL SALES.

WITH A NETWORK OF 10,000+ PARTNERS AND OVER 150 IN-HOUSE BROKERS, THE GROUP DELIVERS RECORD-SETTING RESULTS AND END-TO-END SOLUTIONS ACROSS UAE'S MOST SOUGHT-AFTER ADDRESSES.

THE LUXURY COLLECTION

RESIDENCES

AL MARJAN ISLAND

Abu Dhabi National Hotels  أبو ظبي الوطنية للفنادق

NASIM AL BAHR RESORT AND RESIDENCES

THE LUXURY COLLECTION RESIDENCES AL MARJAN ISLAND IS NOT OWNED, DEVELOPED OR SOLD BY MARRIOTT INTERNATIONAL, INC. OR ITS AFLIATES ("MARRIOTT").

ADNM RAK INVESTMENTS LLC-OPC USES THE LUXURY COLLECTION MARKS UNDER A LICENSE FROM MARRIOTT, WHICH HAS NOT CONFIRMED THE ACCURACY OF ANY OF THE STATEMENTS OR REPRESENTATIONS MADE HEREIN.