



**Reportage**  *Tower*

AL MARYAH ISLAND



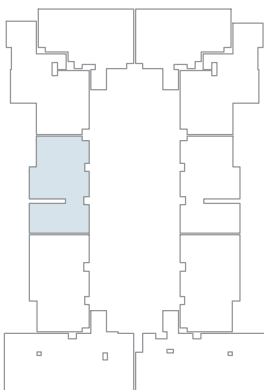
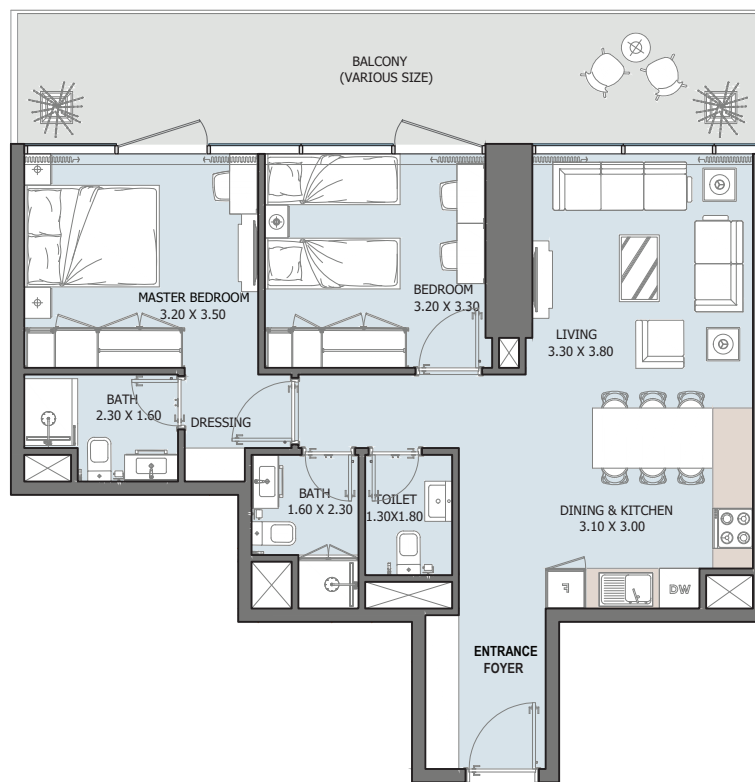
معلم جديد لجمال جزيرة المارية

ADDING ANOTHER LANDMARK TO THE BEAUTY OF AL MARYAH ISLAND



# 2B | Type A

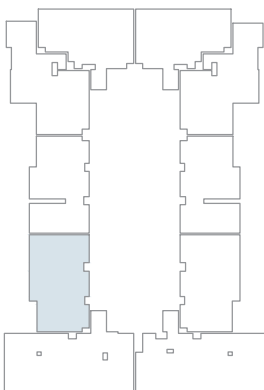
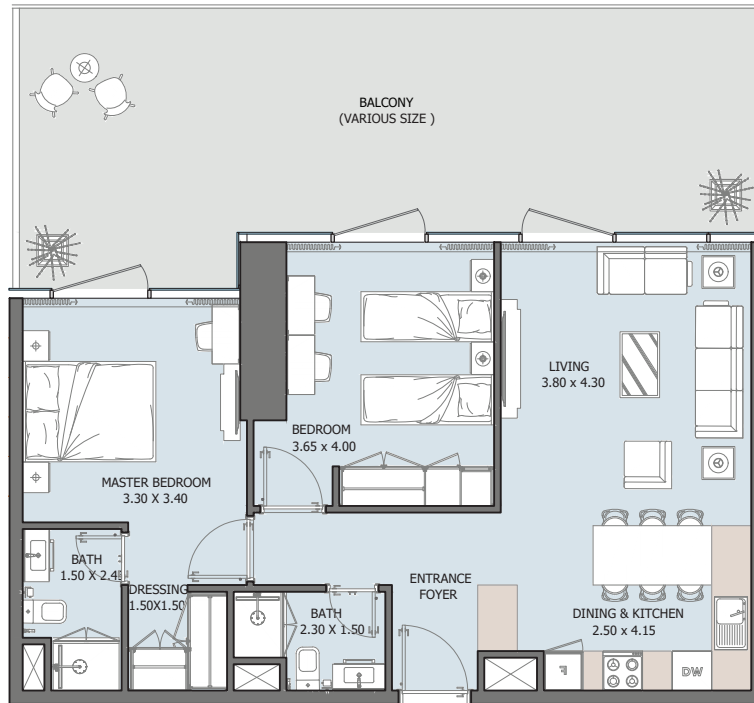
FROM 1<sup>st</sup> TO 6<sup>th</sup> FLOOR



Internal Area	800.40 sq.ft
Outdoor Area	240.03 sq.ft
Total Area	1040.44 sq.ft

# 2B | Type B

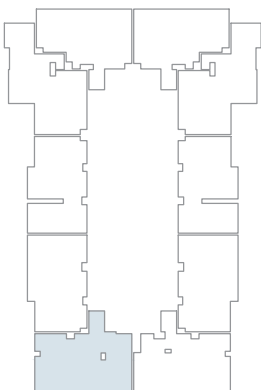
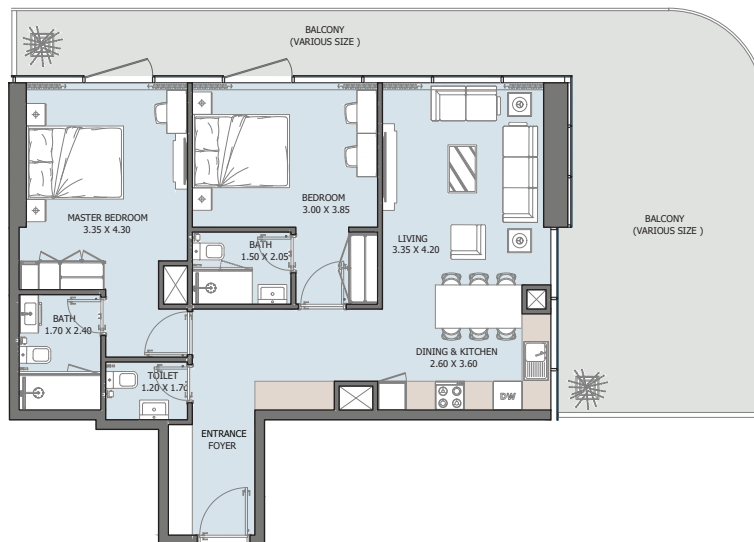
FROM 1<sup>st</sup> TO 6<sup>th</sup> FLOOR



Internal Area	801.70 to 807.62 sq.ft
Outdoor Area	256.29 to 1525.24 sq.ft
Total Area	1063.90 to 2326.94 sq.ft

# 2B | Type C

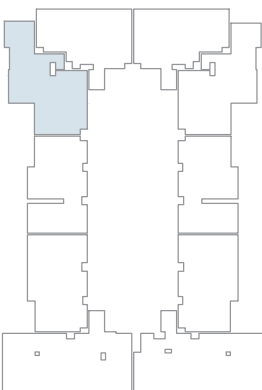
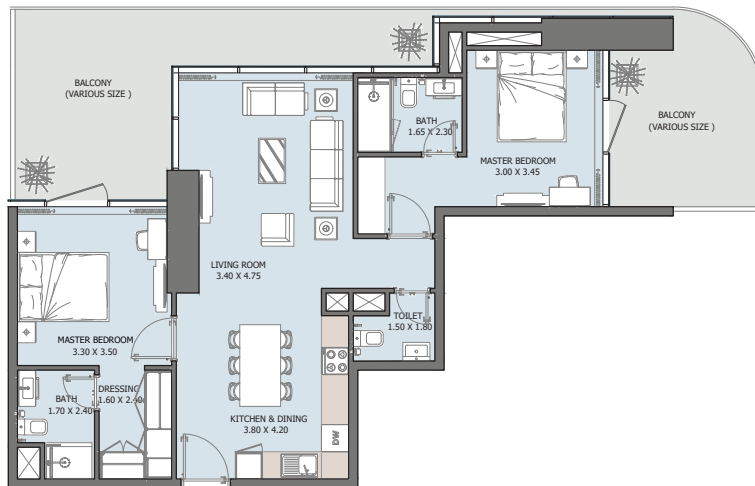
FROM 2<sup>nd</sup> TO 6<sup>th</sup> FLOOR



Internal Area	901.05 sq.ft
Outdoor Area	326.04 to 552.19 sq.ft
Total Area	1227.08 to 1453.23 sq.ft

# 2B | Type D

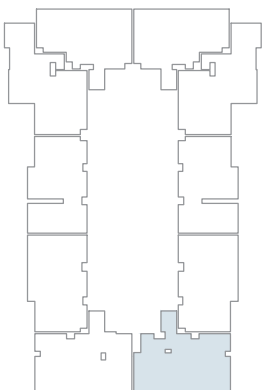
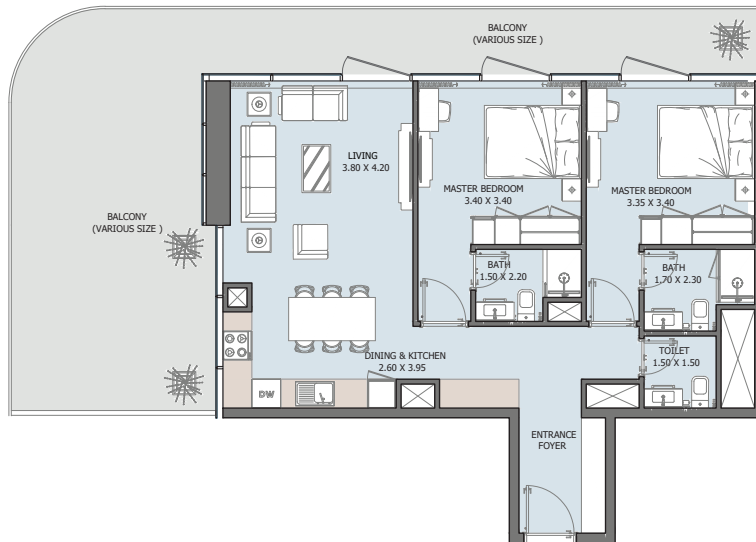
FROM 1<sup>st</sup> TO 6<sup>th</sup> FLOOR



Internal Area	907.40 sq.ft
Outdoor Area	383.52 to 776.29 sq.ft
Total Area	1290.91 to 1683.69 sq.ft

# 2B | Type E

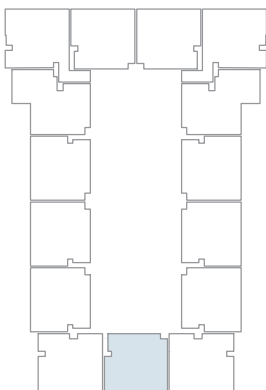
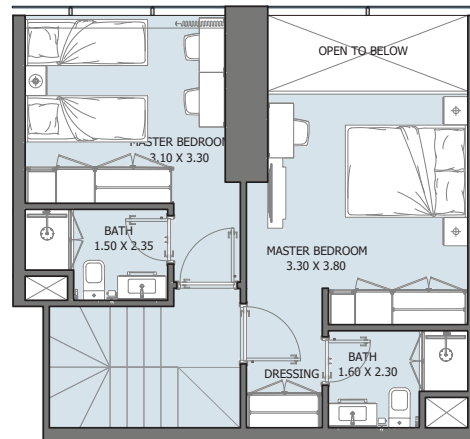
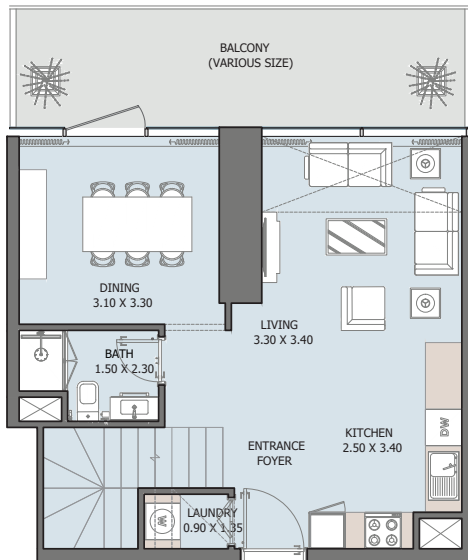
FROM 2<sup>nd</sup> TO 6<sup>th</sup> FLOOR



Internal Area	871.23 sq.ft
Outdoor Area	326.04 to 552.19 sq.ft
Total Area	1197.27 to 1423.42 sq.ft

# 2B Convertible Duplex

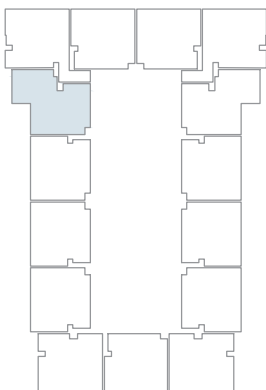
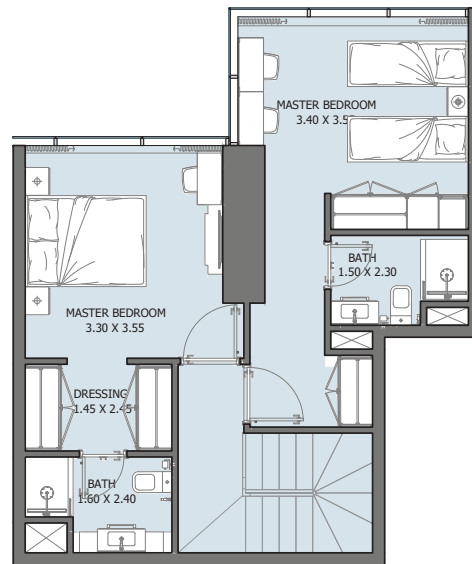
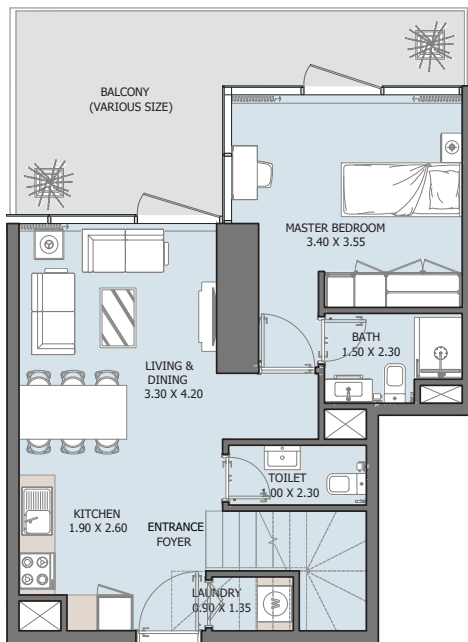
Type A FROM 7<sup>th</sup> TO 34<sup>th</sup> FLOOR



Internal Area	1029.24 to 1046.04 sq.ft
Outdoor Area	111.51 to 249.40 sq.ft
Total Area	1140.76 to 1289.30 sq.ft

# 2B Convertible Duplex

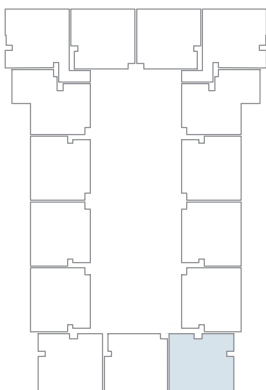
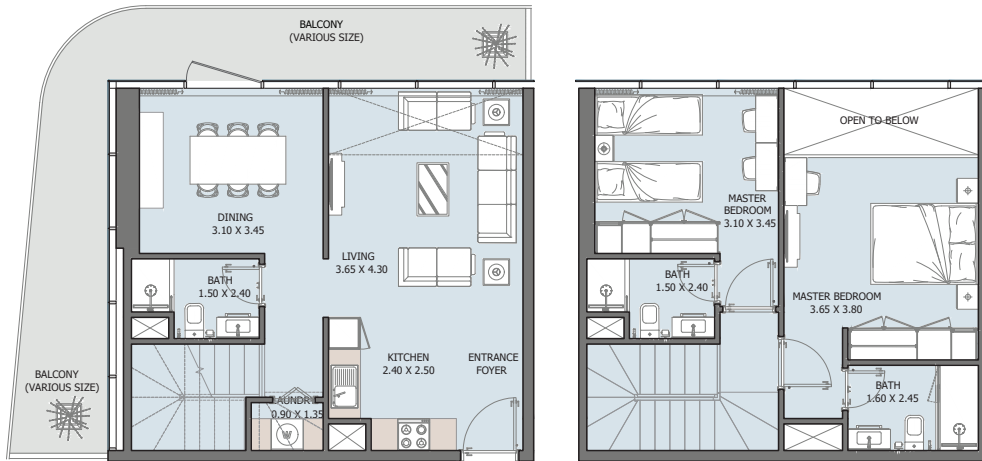
Type B FROM 7<sup>th</sup> TO 32<sup>th</sup> FLOOR



Internal Area	1178.65 sq.ft
Outdoor Area	188.26 sq.ft
Total Area	1366.91 sq.ft

# 2B Convertible Duplex

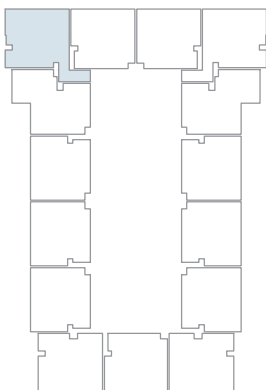
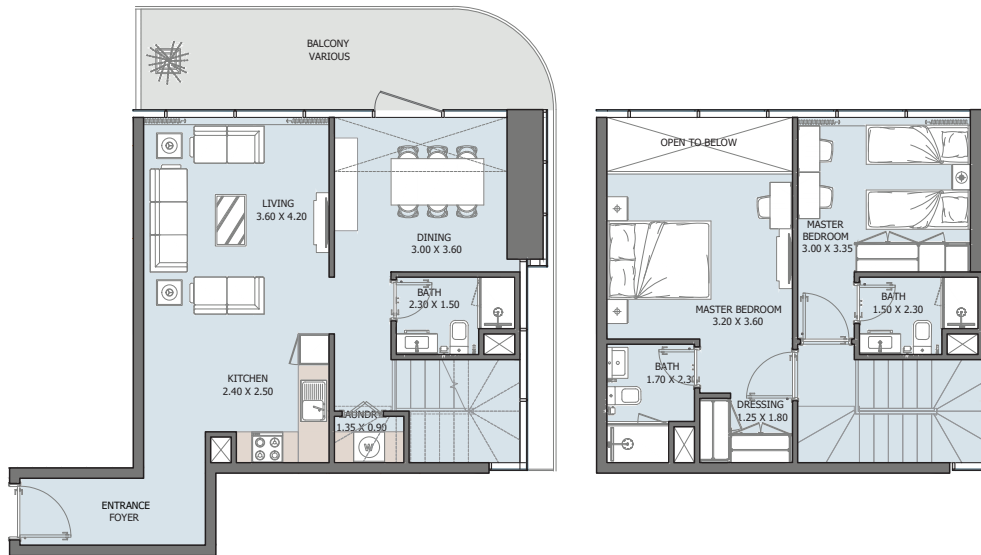
Type C FROM 7<sup>th</sup> TO 32<sup>th</sup> FLOOR



Internal Area	1073.27 sq.ft
Outdoor Area	269.85 sq.ft
Total Area	1343.12 sq.ft

# 2B Convertible Duplex

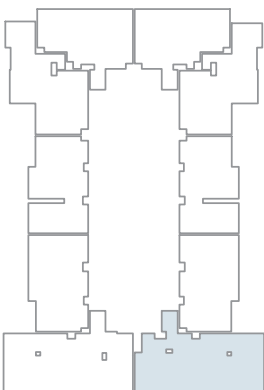
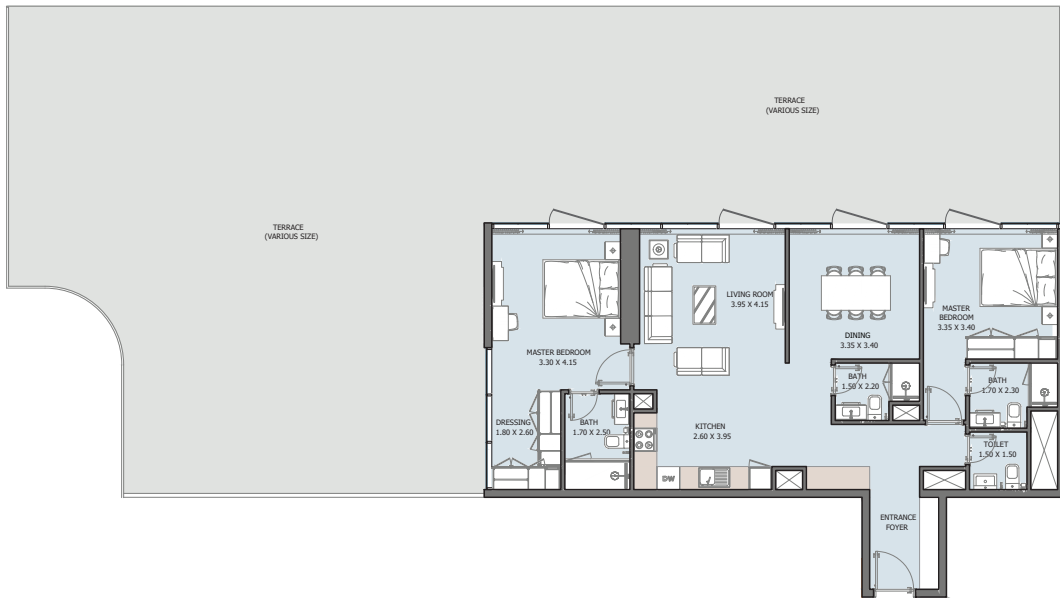
Type D FROM 7<sup>th</sup> TO 32<sup>th</sup> FLOOR



Internal Area	1128.49 sq.ft
Outdoor Area	165.12 sq.ft
Total Area	1293.61 sq.ft

# 2B Convertible Duplex

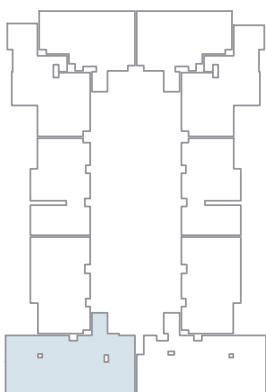
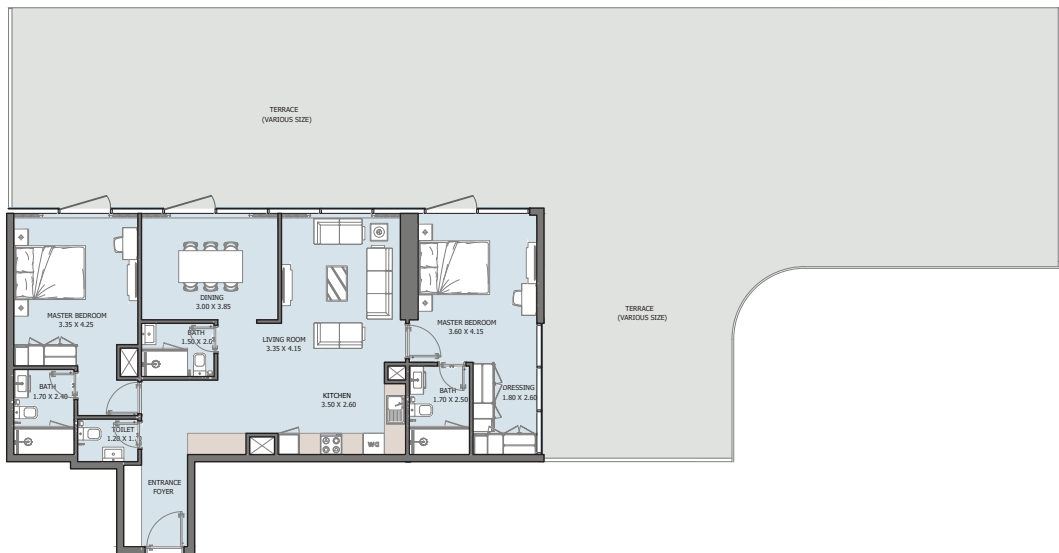
## Type E 1<sup>ST</sup> FLOOR



Internal Area	1160.46 sq.ft
Outdoor Area	2458.80 sq.ft
Total Area	3619.25 sq.ft

# 2B Convertible Duplex

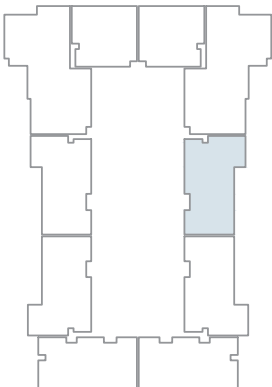
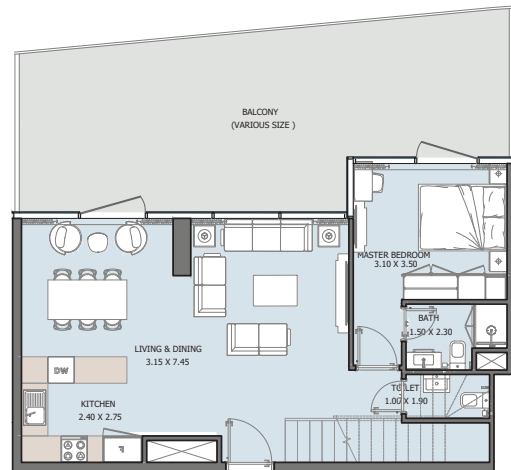
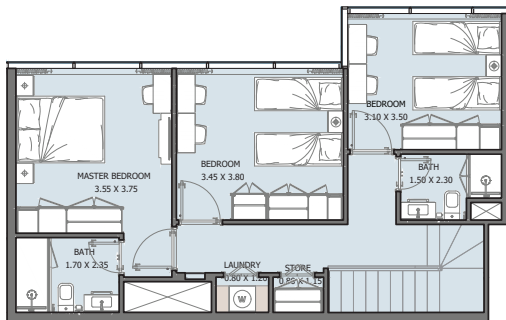
## Type F 1<sup>ST</sup> FLOOR



Internal Area	1190.27 sq.ft
Outdoor Area	2398.52 sq.ft
Total Area	3588.79 sq.ft

# 4B Penthouse

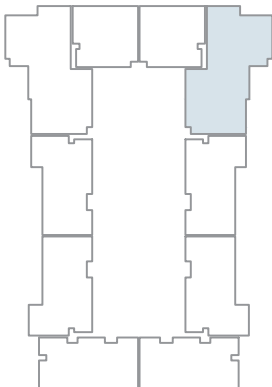
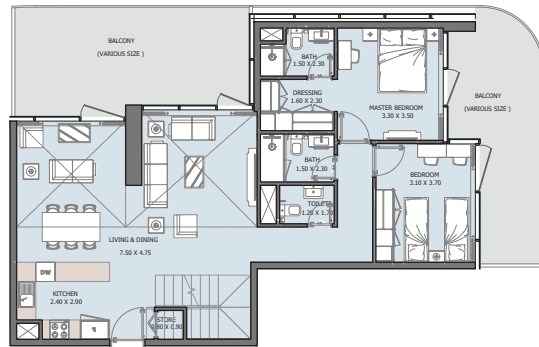
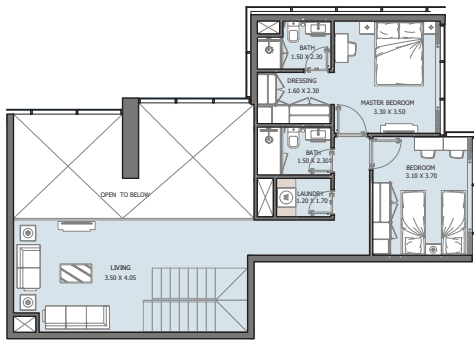
Type A 34<sup>th</sup> FLOOR



Internal Area	1444.52 to 1468.30 sq.ft
Outdoor Area	315.27 to 453.81 sq.ft
Total Area	1783.58 to 1898.32 sq.ft

# 4B Penthouse

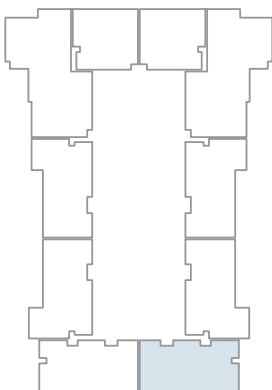
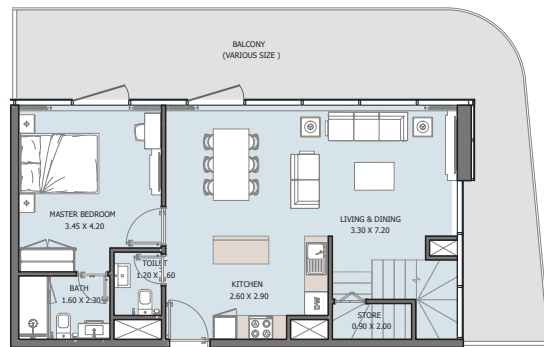
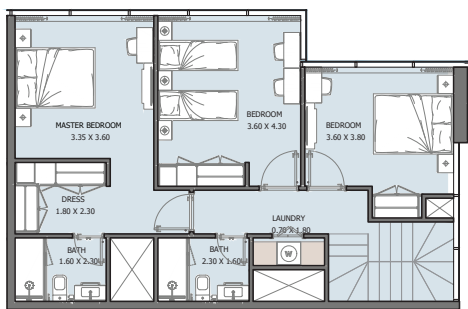
Type B 34<sup>th</sup> FLOOR



Internal Area	1940.84 sq.ft
Outdoor Area	468.66 sq.ft
Total Area	2409.50 sq.ft

# 4B Penthouse

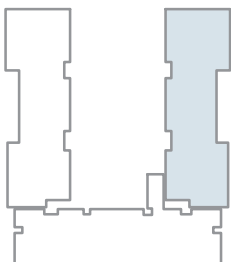
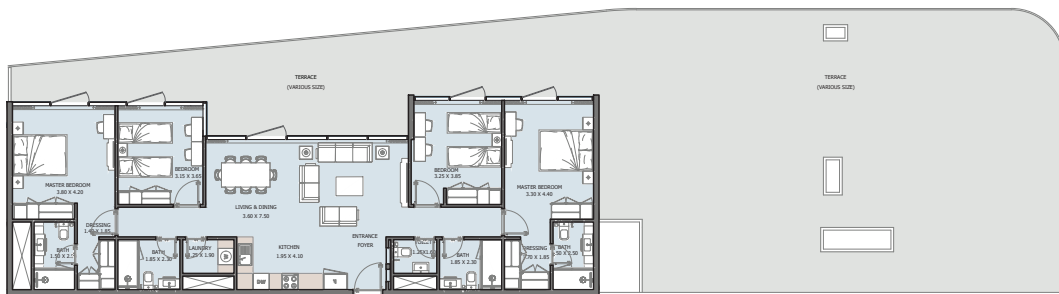
Type C 34<sup>th</sup> FLOOR



Internal Area	1531.16 sq.ft
Outdoor Area	434.97 sq.ft
Total Area	1966.13 sq.ft

# 4B Penthouse

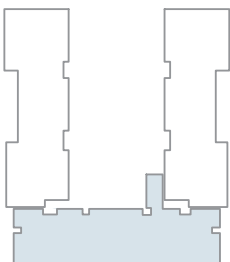
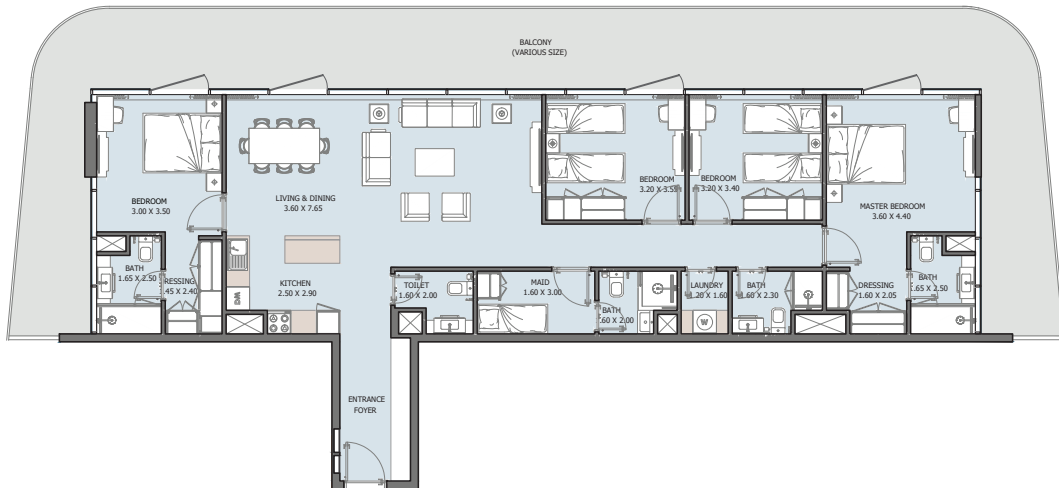
Type D 36<sup>th</sup> FLOOR



Internal Area	1528.47 sq.ft
Outdoor Area	2503.58 sq.ft
Total Area	4032.05 sq.ft

# 4B Penthouse

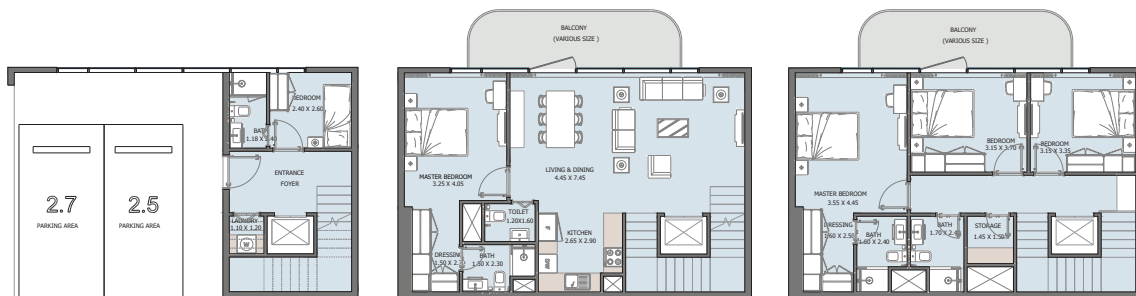
Type E 36<sup>th</sup> FLOOR



Internal Area	1588.64 sq.ft
Outdoor Area	821.50 sq.ft
Total Area	2410.14 sq.ft

# 4B Townhouse

## Type F P1 FLOOR



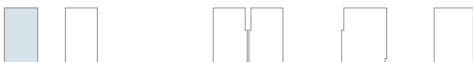
Internal Area	1958.38 to 2017.69 sq.ft
Outdoor Area	254.24 to 263.93 sq.ft
Total Area	2212.63 to 2281.62 sq.ft

# 4B Townhouse

## Type G P1 FLOOR

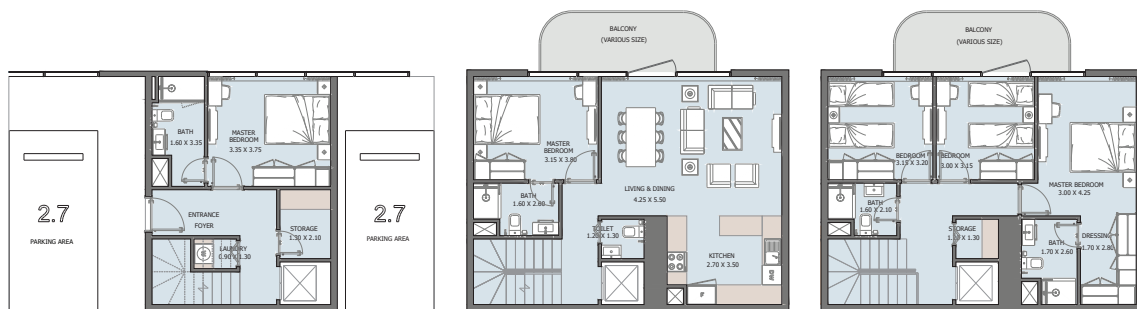


Internal Area	1463.68 to 1495.11 sq.ft
Outdoor Area	149.62 to 153.49 sq.ft
Total Area	1613.29 to 1648.60 sq.ft

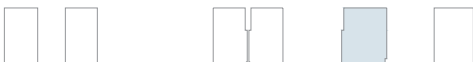


# 5B Townhouse

## Type A P1 FLOOR



Internal Area	1881.96 sq.ft
Outdoor Area	199.99 sq.ft
Total Area	2081.95 sq.ft

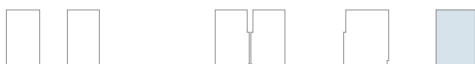


# 5B Townhouse

## Type B P1 FLOOR



Internal Area	1948.05 sq.ft
Outdoor Area	234.87 sq.ft
Total Area	2182.92 sq.ft



# ريپورتاج العقارية

## Reportage.

### Properties

#### Abu Dhabi-UAE | Head Office

Tamouh Tower  
28<sup>th</sup> Floor, Al Reem Island  
P.O. Box: 111949  
Tollfree: +971 800 77 55 2  
info@reportageuae.com

#### Dubai-UAE

Anantara Business Tower  
3<sup>rd</sup> Floor, Business Bay  
P.O. Box: 27446  
Tollfree: +971 800 77 55 2  
info@reportageuae.com

#### Cairo-Egypt

Building 217  
North Teseen St.  
New Cairo  
T: +20 12 0008 1190  
info@reportageeg.com

#### Istanbul-Türkiye

Maslak Mh. Sümer Sk.  
No:4, İç Kapı No:3, Bodrum Kat,  
Maslak Office Building ( MOB) Sarıyer  
T: +90 530 774 9595  
info@reportage.com.tr

#### Riyadh-KSA

Building No. 3230  
Al Aflaj St., Al Suwaidi  
P.O. Box 12791  
T: +966 11 215 1110  
info@reportageuae.com

#### Moscow-Russia

Yefremova Street 10s1, k4/4  
bld sadovye kvartaly  
P.O. Box 119048  
info@reportagerussia.com

#### Kampala, Uganda

Plot 4, Philip Road  
Near German Embassy  
Kololo, Kampala, Uganda  
+256 756 111 434 | +256 763 331 572  
info@reportageug.com

#### Lahore - Pakistan

Plaza No. 185, Broadway  
Commercial phase 8, DHA Lahore  
+923309991111  
Info@reportageempire.com

#### Kigali, Rwanda

KG 334 ST 10, Nyarutarama,  
Kigali, Rwanda  
+250738532168 | +250794100607  
info@reportagerw.com

---

For more information, visit [reportageuae.com](http://reportageuae.com)  
or call 800 77 55 2 | +971 50 244 1078

---



#### Legal Disclaimer:

The information contained in this brochure is confidential and is for the exclusive use of the recipient. This brochure may not be reproduced, distributed, delivered, or furnished to any person without the prior written approval of Reportage Properties. No representation or warranty (expressed or implied) is made or can be given with respect to the accuracy or completeness of the information herein, or that any future offer of units or apartments in the project will conform to the terms described herein. Nothing in this leaflet should be construed as financial, legal, tax or regulatory advice. All accessories such as electronics, furniture, white goods, decorative elements and so forth included in this brochure are not part of the standard unit and used for illustration purposes only. All plans, layouts, pictures, renderings, information and details included in this brochure are indicative only and may change at any time up to the final 'as built' status in accordance with final designs of the project and regulatory approvals and planning permissions.

**R.**