



RIXOS  
AL REEM RESIDENCES

DEVELOPED BY:

East & West  
Property Development

FOR EVERY  
FACET OF LIFE



Rixos Al Reem Residences brings five-star hospitality to a unique urban island home. Just 10 minutes from Downtown Abu Dhabi, yet encircled by water, this is where city and island meet. With hotel service, a wealth of thoughtfully curated amenities, and a generous Rixos welcome, these beautifully designed apartments give you the best of all worlds.



East & West Properties (EWP) is a luxury real estate developer with a track record of delivering premium residential destinations across the UAE and beyond. Established in 1993, the company is recognised for its focus on quality, precision, and long-term investment value.

With a portfolio exceeding AED 10 billion in value, EWP has delivered landmark developments including Peninsula - The Signature Collection, 25hours Heimat Dubai Residences, St. Regis Financial Center Road Dubai Residences, The Edge, Six Senses Residences The Palm Dubai and Rixos Financial Center Road Dubai Residences.

As part of its continued growth, EWP introduces Rixos Al Reem Residences, a signature development on Al Reem Island, Abu Dhabi, designed to offer elevated waterfront living aligned with international hospitality standards.

Backed by an experienced team, the company continues to deliver projects defined by thoughtful design, strong execution, and lasting investment appeal, while ensuring sustainability remains part of its development philosophy through responsible planning and future-ready design. Join us in exploring EWP's portfolio and discovering Rixos Al Reem Residences.

[EWP.AE](http://EWP.AE)



Accor is a world-leading hospitality group consisting of more than 5,600 properties and 10,000 food and beverage venues throughout 110 countries. The group has one of the industry's most diverse and fully integrated hospitality ecosystems encompassing more than forty luxury, premium, midscale and economy hotel brands, entertainment and nightlife venues, restaurants and bars, branded private residences, shared accommodation properties, concierge services, co-working spaces and more.

Founded in 1967, Accor S.A. is headquartered in France and publicly listed on the Euronext Paris Stock Exchange (ISIN code: FR0000120404) and on the OTC Market (Ticker: ACCYY) in the United States.

[GROUP.ACCOR.COM](http://GROUP.ACCOR.COM)



Established in 2000, Rixos is one of the world's fastest-growing hotel chains specialising in luxurious all-inclusive holidays. At the heart of every Rixos Hotel & Resort is a revitalising wellness spa with an authentic Turkish Hammam, renowned for its unique selection of spa rituals, revolutionary entertainment programme, one-of-a-kind children's edutainment programme at Rixy Kids Club and action-packed challenges at Exclusive Sports Club.

Each hotel offers a distinctive variety of restaurants and bars, an exciting entertainment and sports schedule, and a diverse range of lavishly appointed rooms and suites. Each Rixos hotel in Turkey, the UAE, Russia, Croatia, Egypt, Kazakhstan, Qatar and Saudi Arabia is a genuinely inspiring location due to its best-in-class facilities, dining options and entertainment venues. The award-winning Rixos Hotels have received global recognition from distinguished professional bodies, including the American Five Star Diamond Award, Condé Nast, World Travel Awards, Haute Grandeur Global Awards and TripAdvisor.

[RIXOS.COM](http://RIXOS.COM)



Ennismore is a global collective of entrepreneurial and founder-built brands with creativity and purpose at their heart. Founded in 2011 by entrepreneur Sharan Pasricha, Ennismore and Accor entered a joint venture in 2021, creating a new autonomous entity and the fastest-growing lifestyle hospitality company, with Accor holding a majority shareholding. Ennismore comprises three pillars: a lifestyle collective rooted in culture and community, immersive resorts creating havens for escapism and entertainment, and iconic luxury venues pioneering the art of exclusive culinary destinations.

Ennismore has an unrivalled ecosystem of 15 brands and two independent F&B groups with 170+ open hotels and 120+ in the pipeline, as well as over 500 restaurants and bars. Ennismore operates hotels in over 35 countries with over 25,000 team members. Ennismore has four dedicated in-house studios, including an F&B Platform; AIME Studios, Interior & Graphic design; a Digital Product & Tech Innovation Lab; and a Partnerships Studio. Dis-loyalty is Ennismore's travel and food membership dedicated to lifestyle. Ennismore is committed to positively impacting the world, with a key focus on creating inclusive communities among its teams and in the places it calls home.

[ENNISMORE.COM](http://ENNISMORE.COM)

\*Figures as of the end of June 2024



Aedas is the world's only local and global architecture and design practice driven by global sharing of research, local knowledge and international practice. Our 1,200 creative minds with design studios across the globe create world-class design solutions with deep social and cultural understanding of the communities we design for. We create world-class design solutions that are tailored to the needs of cities and communities around the world.

[AEDAS.COM](http://AEDAS.COM)



At HBA Residential, collaboration is at our core with all disciplines in-house including architecture, interiors, furniture, technical and digital design. We craft luxury projects of every scale with seamless precision. Catering to UHNWIs and luxury developers, we deliver holistic, end-to-end solutions, from master planning to the finest of details. As a boutique studio within HBA's global network, we bring expertise to an extraordinary range of projects ranging from the most prestigious to the most private of residences, palaces and beyond. As a multi-skilled collective with proven pedigree, we're driven to create visionary design at the highest level of expertise and artistry. We're united in our positivity and integrity; attributes we value above all else, offering our clients heartfelt service and uniquely exquisite projects.

[HBA.COM](http://HBA.COM)



## WITHIN REACH, BEYOND COMPARE



Rixos Al Reem Residences brings five-star hospitality to a unique urban island home. Just 10 minutes from Downtown Abu Dhabi, yet encircled by water, this is where city and island meet. With hotel service, a wealth of thoughtfully curated amenities, and a generous Rixos welcome, these beautifully designed apartments give you the best of all worlds.

<b>386</b>	<b>172</b>	<b>140</b>	<b>68</b>	<b>06</b>
RESIDENCES	ONE-BEDROOM	TWO-BEDROOM	THREE-BEDROOM	FOUR-BEDROOM

UNIT TYPES	NUMBER OF UNITS	MIN OF TOTAL AREA (SQFT)	MAX OF TOTAL AREA (SQFT)
ONE - BEDROOM	172	954	1,076
TWO - BEDROOM APARTMENT	128	1,479	1,645
TWO - BEDROOM LOFT	12	1,769	1,904
THREE - BEDROOM APARTMENT	52	1,947	1,951
THREE - BEDROOM LOFT	16	2,399	2,684
FOUR - BEDROOM APARTMENT	6	2,941	3,057

# PAYMENT PLAN SCHEDULE



**5%**

DOWN PAYMENT

**35%**

DURING CONSTRUCTION

**60%**

ON HANDOVER

## OPTION 1

MILESTONE	PERCENTAGE	DATE
DOWN PAYMENT	5%	ON RESERVATION/FEB 2026
1 <sup>ST</sup> INSTALLMENT	5%	JUL-26
2 <sup>ND</sup> INSTALLMENT	5%	DEC-26
3 <sup>RD</sup> INSTALLMENT	5%	MAY-27
4 <sup>TH</sup> INSTALLMENT	5%	OCT-27
5 <sup>TH</sup> INSTALLMENT	5%	MAR-28
6 <sup>TH</sup> INSTALLMENT	10%	AUG 28
FINAL AT HANDOVER	60%	JAN 29

## OPTION 2

MILESTONE	PERCENTAGE	DATE
DOWN PAYMENT	10%	ON RESERVATION/FEB 2026
1 <sup>ST</sup> INSTALLMENT	5%	JUL-26
2 <sup>ND</sup> INSTALLMENT	5%	DEC-26
3 <sup>RD</sup> INSTALLMENT	5%	MAY-27
4 <sup>TH</sup> INSTALLMENT	5%	OCT-27
5 <sup>TH</sup> INSTALLMENT	5%	MAR-28
6 <sup>TH</sup> INSTALLMENT	5%	AUG 28
FINAL AT HANDOVER	60%	JAN 29

# INTERIORS



RESIDENCE MASTER BEDROOM



RESIDENCE LOFT LIVING ROOM



RESIDENCE LIVING ROOM



RESIDENCE KITCHEN

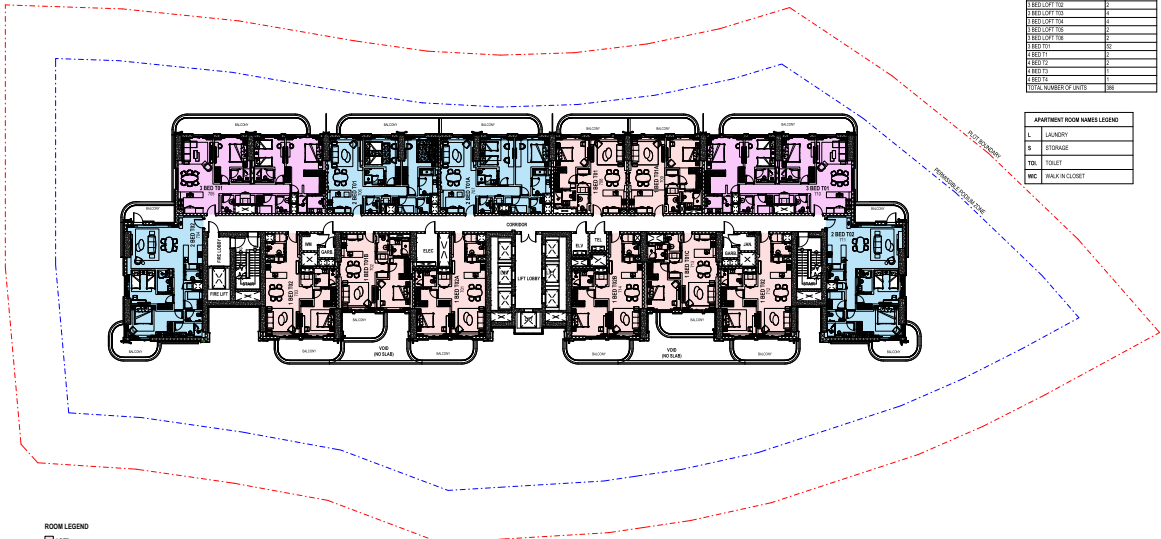


RESIDENCE MAJLIS



UNIT SCHEDULE PER FLOOR (R-2)		UNIT SCHEDULE	
UNIT TYPE	NUMBER OF UNITS	UNIT TYPE	NUMBER OF UNITS
1-BED T1A	1	1-BED T1A	26
1-BED T1B	1	1-BED T1B	26
1-BED T1C	1	1-BED T1C	26
1-BED T1D	1	1-BED T1D	26
1-BED T1E	2	1-BED T1E	26
1-BED T1F	1	1-BED T1F	26
1-BED T1G	1	1-BED T1G	26
1-BED T1H	1	1-BED T1H	26
1-BED T1I	2	1-BED T1I	26
1-BED T1J	2	1-BED T1J	26
TOTAL NUMBER OF UNITS	14	TOTAL NUMBER OF UNITS	26

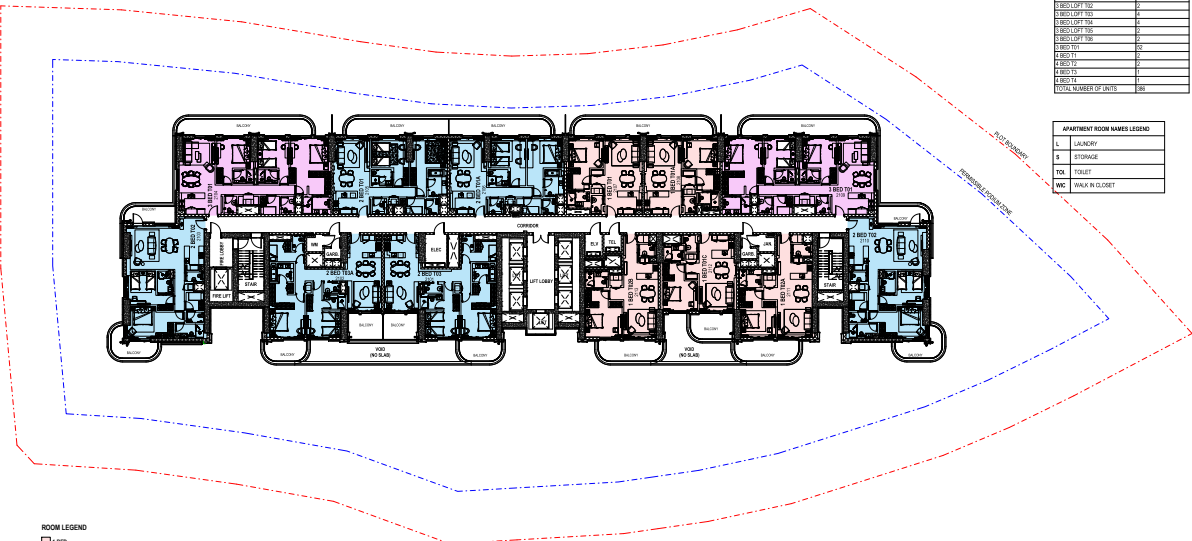
APARTMENT ROOM NAMES LEGEND	
L	LAUNDRY
S	STORAGE
TOI	TOILET
MIC	MIRAC IN CLOSET



ROOM LEGEND	
1-BED	1-BED
1-BED	1-BED
1-BED	1-BED

UNIT SCHEDULE PER FLOOR (R-3)		UNIT SCHEDULE	
UNIT TYPE	NUMBER OF UNITS	UNIT TYPE	NUMBER OF UNITS
1-BED T1A	1	1-BED T1A	26
1-BED T1B	1	1-BED T1B	26
1-BED T1C	1	1-BED T1C	26
1-BED T1D	1	1-BED T1D	26
1-BED T1E	1	1-BED T1E	26
1-BED T1F	1	1-BED T1F	26
1-BED T1G	1	1-BED T1G	26
1-BED T1H	1	1-BED T1H	26
1-BED T1I	2	1-BED T1I	26
1-BED T1J	2	1-BED T1J	26
TOTAL NUMBER OF UNITS	11	TOTAL NUMBER OF UNITS	26

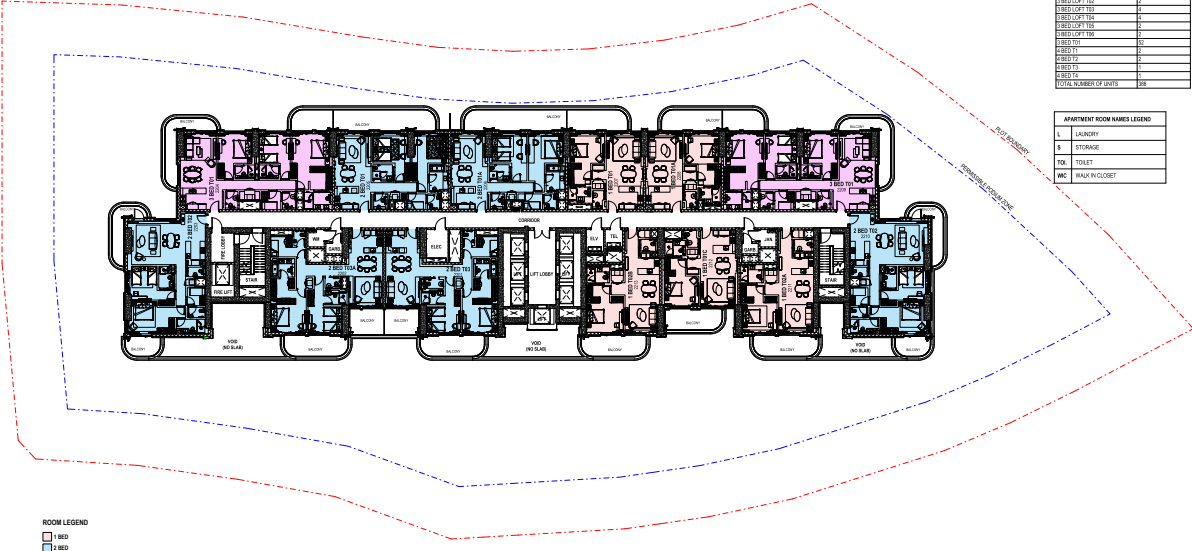
APARTMENT ROOM NAMES LEGEND	
L	LAUNDRY
S	STORAGE
TOI	TOILET
MIC	MIRAC IN CLOSET



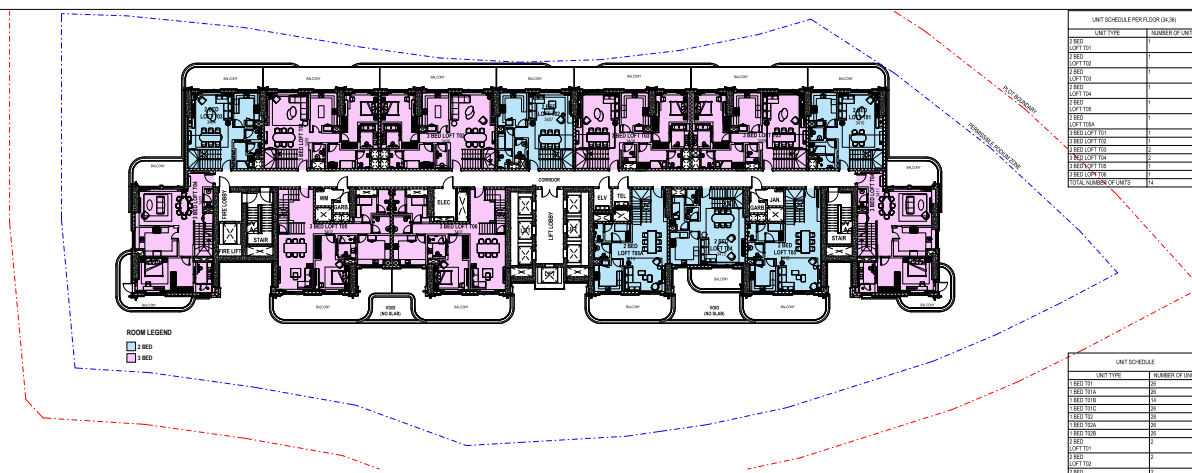
ROOM LEGEND	
1-BED	1-BED
1-BED	1-BED
1-BED	1-BED

UNIT SCHEDULE PER FLOOR (30)		UNIT SCHEDULE	
UNIT TYPE	NUMBER OF UNITS	UNIT TYPE	NUMBER OF UNITS
1 BED T01	1	1 BED T01	26
1 BED T02	1	1 BED T02	26
1 BED T03	1	1 BED T03	26
1 BED T04	1	1 BED T04	26
1 BED T05	1	1 BED T05	26
1 BED T06	1	1 BED T06	26
1 BED T07	1	1 BED T07	26
1 BED T08	1	1 BED T08	26
1 BED T09	1	1 BED T09	26
1 BED T10	1	1 BED T10	26
1 BED T11	1	1 BED T11	26
1 BED T12	1	1 BED T12	26
1 BED T13	1	1 BED T13	26
1 BED T14	1	1 BED T14	26
1 BED T15	1	1 BED T15	26
1 BED T16	1	1 BED T16	26
1 BED T17	1	1 BED T17	26
1 BED T18	1	1 BED T18	26
1 BED T19	1	1 BED T19	26
1 BED T20	1	1 BED T20	26
1 BED T21	1	1 BED T21	26
1 BED T22	1	1 BED T22	26
1 BED T23	1	1 BED T23	26
1 BED T24	1	1 BED T24	26
1 BED T25	1	1 BED T25	26
1 BED T26	1	1 BED T26	26
1 BED T27	1	1 BED T27	26
1 BED T28	1	1 BED T28	26
1 BED T29	1	1 BED T29	26
1 BED T30	1	1 BED T30	26
1 BED T31	1	1 BED T31	26
1 BED T32	1	1 BED T32	26
1 BED T33	1	1 BED T33	26
1 BED T34	1	1 BED T34	26
1 BED T35	1	1 BED T35	26
1 BED T36	1	1 BED T36	26
1 BED T37	1	1 BED T37	26
1 BED T38	1	1 BED T38	26
1 BED T39	1	1 BED T39	26
1 BED T40	1	1 BED T40	26
1 BED T41	1	1 BED T41	26
1 BED T42	1	1 BED T42	26
1 BED T43	1	1 BED T43	26
1 BED T44	1	1 BED T44	26
1 BED T45	1	1 BED T45	26
1 BED T46	1	1 BED T46	26
1 BED T47	1	1 BED T47	26
1 BED T48	1	1 BED T48	26
1 BED T49	1	1 BED T49	26
1 BED T50	1	1 BED T50	26
1 BED T51	1	1 BED T51	26
1 BED T52	1	1 BED T52	26
1 BED T53	1	1 BED T53	26
1 BED T54	1	1 BED T54	26
1 BED T55	1	1 BED T55	26
1 BED T56	1	1 BED T56	26
1 BED T57	1	1 BED T57	26
1 BED T58	1	1 BED T58	26
1 BED T59	1	1 BED T59	26
1 BED T60	1	1 BED T60	26
1 BED T61	1	1 BED T61	26
1 BED T62	1	1 BED T62	26
1 BED T63	1	1 BED T63	26
1 BED T64	1	1 BED T64	26
1 BED T65	1	1 BED T65	26
1 BED T66	1	1 BED T66	26
1 BED T67	1	1 BED T67	26
1 BED T68	1	1 BED T68	26
1 BED T69	1	1 BED T69	26
1 BED T70	1	1 BED T70	26
1 BED T71	1	1 BED T71	26
1 BED T72	1	1 BED T72	26
1 BED T73	1	1 BED T73	26
1 BED T74	1	1 BED T74	26
1 BED T75	1	1 BED T75	26
1 BED T76	1	1 BED T76	26
1 BED T77	1	1 BED T77	26
1 BED T78	1	1 BED T78	26
1 BED T79	1	1 BED T79	26
1 BED T80	1	1 BED T80	26
1 BED T81	1	1 BED T81	26
1 BED T82	1	1 BED T82	26
1 BED T83	1	1 BED T83	26
1 BED T84	1	1 BED T84	26
1 BED T85	1	1 BED T85	26
1 BED T86	1	1 BED T86	26
1 BED T87	1	1 BED T87	26
1 BED T88	1	1 BED T88	26
1 BED T89	1	1 BED T89	26
1 BED T90	1	1 BED T90	26
1 BED T91	1	1 BED T91	26
1 BED T92	1	1 BED T92	26
1 BED T93	1	1 BED T93	26
1 BED T94	1	1 BED T94	26
1 BED T95	1	1 BED T95	26
1 BED T96	1	1 BED T96	26
1 BED T97	1	1 BED T97	26
1 BED T98	1	1 BED T98	26
1 BED T99	1	1 BED T99	26
1 BED T100	1	1 BED T100	26
TOTAL NUMBER OF UNITS	2	TOTAL NUMBER OF UNITS	26

APARTMENT ROOM NAMES LEGEND	
L	LAUNDRY
S	STORAGE
TOI	TOILET
WIC	WALK IN CLOSET



ROOM LEGEND	
■	1 BED
■	2 BED
■	3 BED



UNIT SCHEDULE PER FLOOR (34)	
UNIT TYPE	NUMBER OF UNITS
1 BED T01	1
1 BED T02	1
1 BED T03	1
1 BED T04	1
1 BED T05	1
1 BED T06	1
1 BED T07	1
1 BED T08	1
1 BED T09	1
1 BED T10	1
1 BED T11	1
1 BED T12	1
1 BED T13	1
1 BED T14	1
1 BED T15	1
1 BED T16	1
1 BED T17	1
1 BED T18	1
1 BED T19	1
1 BED T20	1
1 BED T21	1
1 BED T22	1
1 BED T23	1
1 BED T24	1
1 BED T25	1
1 BED T26	1
1 BED T27	1
1 BED T28	1
1 BED T29	1
1 BED T30	1
1 BED T31	1
1 BED T32	1
1 BED T33	1
1 BED T34	1
1 BED T35	1
1 BED T36	1
1 BED T37	1
1 BED T38	1
1 BED T39	1
1 BED T40	1
1 BED T41	1
1 BED T42	1
1 BED T43	1
1 BED T44	1
1 BED T45	1
1 BED T46	1
1 BED T47	1
1 BED T48	1
1 BED T49	1
1 BED T50	1
1 BED T51	1
1 BED T52	1
1 BED T53	1
1 BED T54	1
1 BED T55	1
1 BED T56	1
1 BED T57	1
1 BED T58	1
1 BED T59	1
1 BED T60	1
1 BED T61	1
1 BED T62	1
1 BED T63	1
1 BED T64	1
1 BED T65	1
1 BED T66	1
1 BED T67	1
1 BED T68	1
1 BED T69	1
1 BED T70	1
1 BED T71	1
1 BED T72	1
1 BED T73	1
1 BED T74	1
1 BED T75	1
1 BED T76	1
1 BED T77	1
1 BED T78	1
1 BED T79	1
1 BED T80	1
1 BED T81	1
1 BED T82	1
1 BED T83	1
1 BED T84	1
1 BED T85	1
1 BED T86	1
1 BED T87	1
1 BED T88	1
1 BED T89	1
1 BED T90	1
1 BED T91	1
1 BED T92	1
1 BED T93	1
1 BED T94	1
1 BED T95	1
1 BED T96	1
1 BED T97	1
1 BED T98	1
1 BED T99	1
1 BED T100	1
TOTAL NUMBER OF UNITS	100

134 FLOOR 34, FFL  
1:200



UNIT SCHEDULE	
UNIT TYPE	NUMBER OF UNITS
1 BED T01	26
1 BED T02	26
1 BED T03	26
1 BED T04	26
1 BED T05	26
1 BED T06	26
1 BED T07	26
1 BED T08	26
1 BED T09	26
1 BED T10	26
1 BED T11	26
1 BED T12	26
1 BED T13	26
1 BED T14	26
1 BED T15	26
1 BED T16	26
1 BED T17	26
1 BED T18	26
1 BED T19	26
1 BED T20	26
1 BED T21	26
1 BED T22	26
1 BED T23	26
1 BED T24	26
1 BED T25	26
1 BED T26	26
1 BED T27	26
1 BED T28	26
1 BED T29	26
1 BED T30	26
1 BED T31	26
1 BED T32	26
1 BED T33	26
1 BED T34	26
1 BED T35	26
1 BED T36	26
1 BED T37	26
1 BED T38	26
1 BED T39	26
1 BED T40	26
1 BED T41	26
1 BED T42	26
1 BED T43	26
1 BED T44	26
1 BED T45	26
1 BED T46	26
1 BED T47	26
1 BED T48	26
1 BED T49	26
1 BED T50	26
1 BED T51	26
1 BED T52	26
1 BED T53	26
1 BED T54	26
1 BED T55	26
1 BED T56	26
1 BED T57	26
1 BED T58	26
1 BED T59	26
1 BED T60	26
1 BED T61	26
1 BED T62	26
1 BED T63	26
1 BED T64	26
1 BED T65	26
1 BED T66	26
1 BED T67	26
1 BED T68	26
1 BED T69	26
1 BED T70	26
1 BED T71	26
1 BED T72	26
1 BED T73	26
1 BED T74	26
1 BED T75	26
1 BED T76	26
1 BED T77	26
1 BED T78	26
1 BED T79	26
1 BED T80	26
1 BED T81	26
1 BED T82	26
1 BED T83	26
1 BED T84	26
1 BED T85	26
1 BED T86	26
1 BED T87	26
1 BED T88	26
1 BED T89	26
1 BED T90	26
1 BED T91	26
1 BED T92	26
1 BED T93	26
1 BED T94	26
1 BED T95	26
1 BED T96	26
1 BED T97	26
1 BED T98	26
1 BED T99	26
1 BED T100	26
TOTAL NUMBER OF UNITS	26

135 FLOOR 35, FFL  
1:200

134 FLOOR 34, FFL  
 135 FLOOR 35, FFL  
 1:200





## FOR EVERY MOMENT



At Rixos Al Reem Residences, amenities flow vertically. On every floor, thoughtfully curated spaces fit effortlessly into the rhythm of the day. From steam room to pickleball court, swimming pool to safe, friendly Kids and Teens clubs, the Residences offer something for every generation.

This is an experience that goes beyond wellness. This is abundance, enhanced at every moment by Rixos' unparalleled five-star service, where wishes are fulfilled almost before they're known.



# AMENITIES & SERVICES



GYM



STEAM/SAUNA



WELLNESS ROOM



YOGA



PICKLEBALL COURT



RIXY KIDS CLUB



TEENS CLUB



FAMILY POOL



ROOF PLUNGE POOL



KIDS POOL/SPLASH AREA



OUTDOOR SEATING



LANDSCAPED AREA



RUNNING TRACK



CONCIERGE



CINEMA ROOM



RESIDENTS LOUNGE/MAJLIS



EXCLUSIVE SPORTS CLUB



KIDS PLAYGROUND



BRANDED CAFÉ



CO WORKING SPACE

## CORE SERVICES

Core Services are available to all Residence owners and are included in the service charge assessed to each homeowner.

- Residence Concierge
- Doorpersons & Valet
- Security
- Clubhouse / Residence Lounge/Majlis staff
- Accor Ownership Benefits Program Annual Fee
- Common Area Maintenance
- Common Area Housekeeping
- Common Area Utilities
- Common Area "Reserve for Replacement"
- WIFI internet in Residence Lounge/Majlis
- General & Administrative
- Property Insurance (base building/common areas)

## À LA CARTE SERVICES

À la carte services are optional and incur an additional charge, typically billed to the Residence owner's personal account. All services are coordinated by the Residence Concierge, providing a single point of contact and tailored to local market needs.

- In-residence catering, personal chef
- Shopping services, personal assistant
- Childcare
- Dry cleaning & laundry
- Private transportation / limousine services
- In-residence housekeeping (daily, weekly etc.)
- In-residence maintenance
- "While You Are Away" Maintenance Package
  - Turnkey in-residence maintenance solution for Resident's who frequently reside elsewhere

# ALL AT YOUR FINGERTIPS



Al Reem Island occupies a unique position. Situated just 600 meters off Abu Dhabi's coast, it has its own vibrant culture. With a thriving business district and inviting, luxurious mall, surrounded by a mangrove-rich waterfront, it offers the perfect blend of city buzz and coastal tranquillity.

The island enjoys easy connections to Downtown Abu Dhabi, transport links, excellent schools and other key attractions:

## BY CAR

5-7 mins

- Redwood Montessor Nursery
- Reem Central Park
- Repton School, Abu Dhabi

10-14 Mins

- The Galleria Mall
- Louvre Abu Dhabi

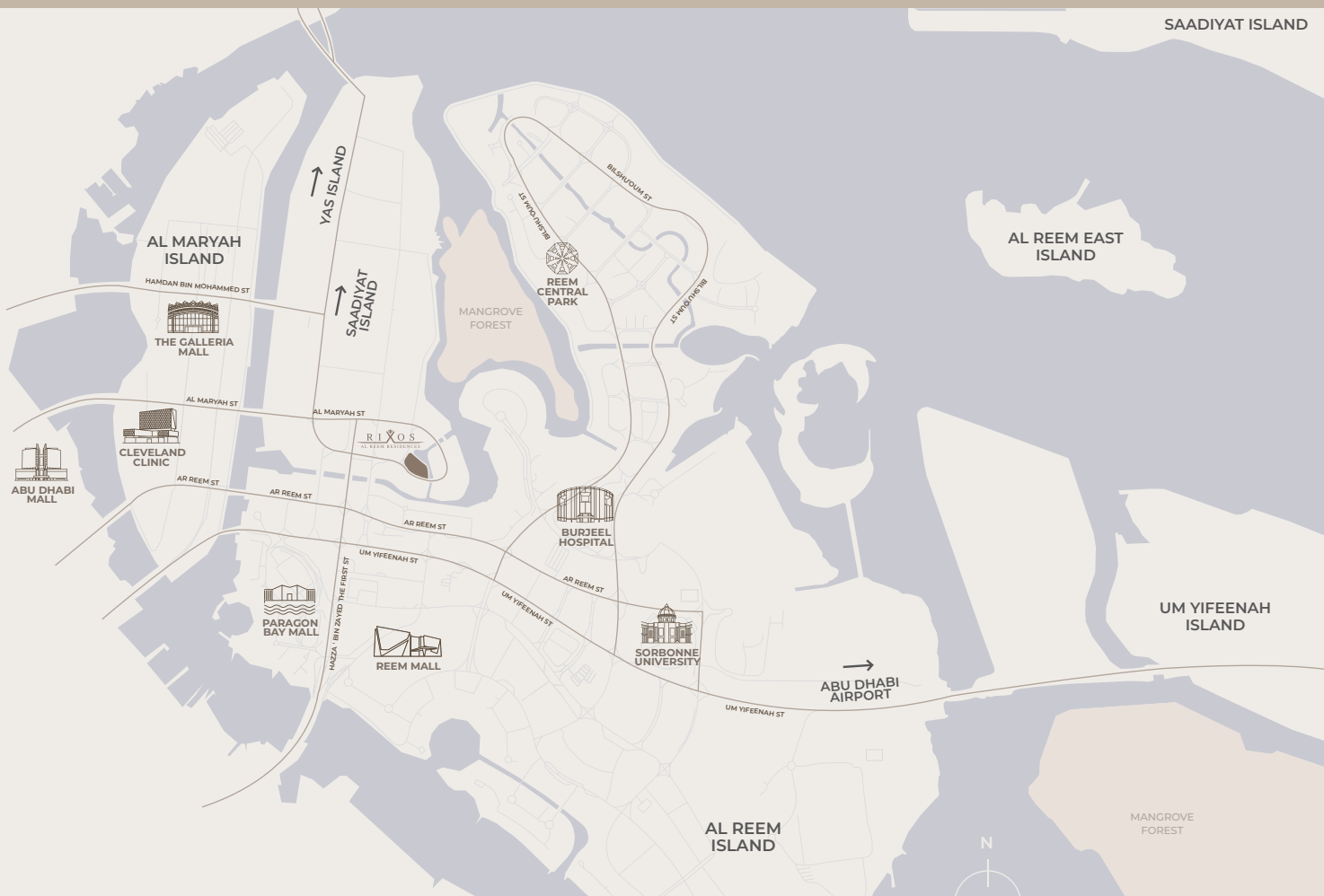
20 Mins

- NYU Abu Dhabi

30-32 Mins

- Yas island
- Zayed International Airport

Travel time source: Google maps





## ACCOR OWNER BENEFITS PROGRAM



- Exclusive invitation to join Diamond status in ALL - Accor Live Limitless\*
- Gifting of a GOLD status in ALL - Accor Live Limitless to a family or friend
- VIP reservation desk to support travel planning across Accor's global network of hotels, resorts, and related hospitality offerings
- Automatic upgrades on arrival across more than 5,600 hotels and resorts worldwide\*\*
  - %20 off best available rate worldwide\*\*

Eligibility continues for as long as Purchaser owns Sofitel branded real estate, subject to inclusion of the annual Residence Ownership Benefits Fee being included in the property service charge assessed to all Residence Owners.  
\*\*At participating Accor brands and properties.

# RIXOS

AL REEM RESIDENCES



FOR MORE DETAILS



Please Visit:  
[HTTPS://WWW.RIXOSALREEMRESIDENCES.COM](https://www.rixosalreemresidences.com)

Or contact:  
[INFO@RIXOSALREEMRESIDENCES.COM](mailto:info@rixosalreemresidences.com)

Or call:  
**+971 56 218 8994**



**East & West**  
Property Development

**RIXOS**  
HOTELS

**ENNISMORE**

#### DISCLAIMER

Rixos Al Reem Residences ("Project") is not owned, developed, or sold by Rixos Consultancy FZE or its affiliates. East & West Properties ("Licensee"), is independently owned and operated and is solely responsible for the ownership, development, and operation of the Project.

Licensee uses the "Rixos" Brand and certain trademarks pursuant to a limited, non-exclusive, non-transferable and non sub-licensable license from Rixos Consultancy FZE. Under certain circumstances, the license may be terminated or revoked according to its terms in which case neither the individual residential units ("Units") nor any part of the Project will be identified as a "Rixos" branded project or have any rights to use the "Rixos" trademarks. Rixos Consultancy FZE does not make any representations or guarantees with respect to the Units or the Project and is not responsible for Licensee's marketing practices, advertising, and sales representations.