

LUM1NAR
TOWER3

Object 1

Dubai Is a Gallery,
and Buildings Are Showpieces



LUM1NAR TOWER3

District 2, Jumeirah Village Triangle

Building Description:

B+G+5P+20+R

w/ Retail (Ground Floor)

Anticipated Handover: Q3 2027

Anticipated Service Charge: AED 15/Sq.Ft.

Welcome to LUM1NAR Tower 3 where every corner is infused with an enchanting ambiance, inviting you into a world of timeless elegance and modern allure.

Matte glass panels, softly lit from within, welcome you with a shimmering embrace blending the warmth of wood with the bold sophistication of dark accents.

Floor Plans

GROUND FLOOR PLAN

FLOOR: G

LUMINAR TOWER3

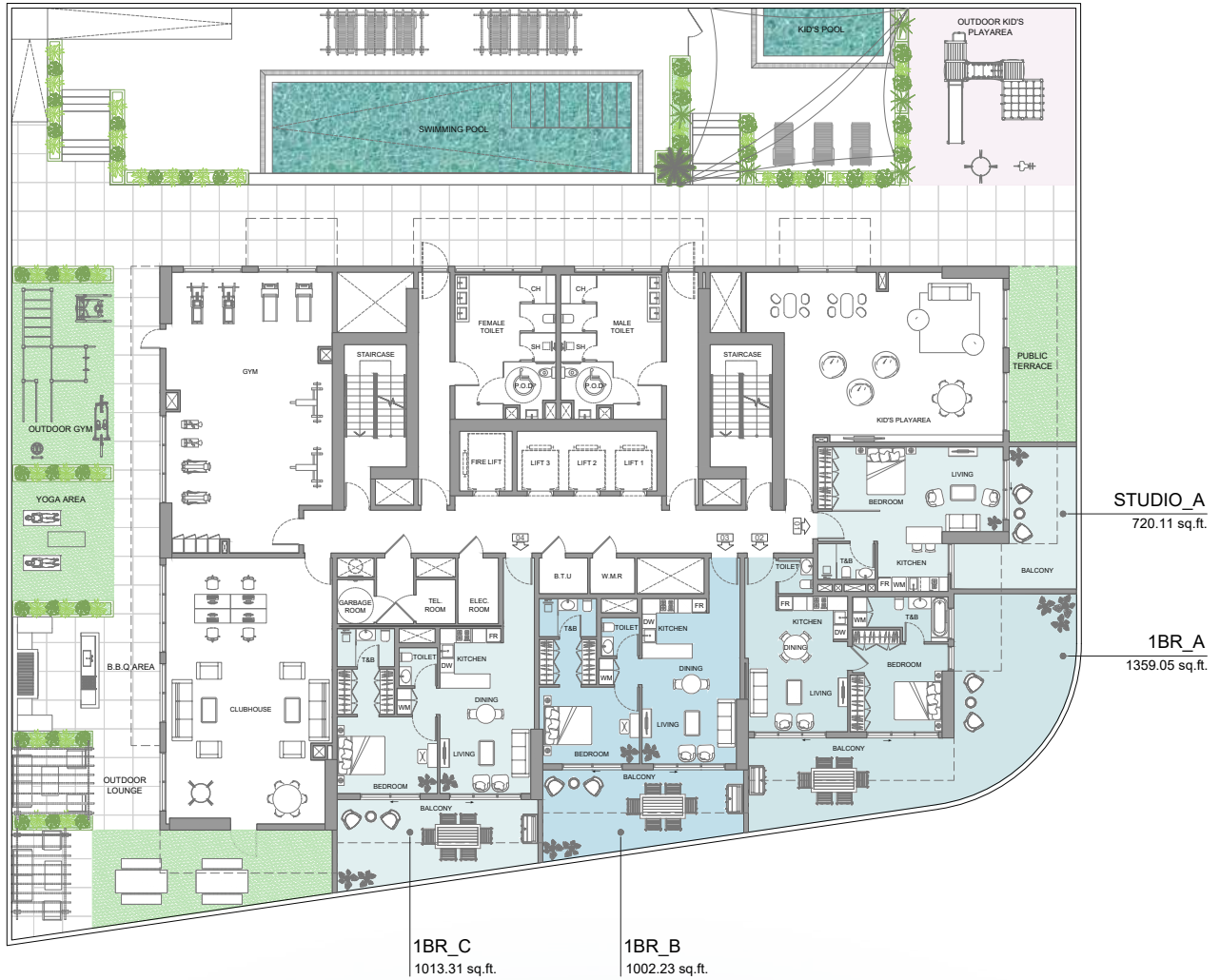


TYPICAL FLOOR PLAN

FLOOR: 1

LUMINAR TOWER3

JVT COMMUNITY, POOL VIEWS



DUBAI MARINA, JUMEIRAH ISLANDS,
JVT COMMUNITY PARK VIEWS

JUMEIRAH GOLF ESTATES, DUBAI PRODUCTION CITY,
SHEIKH MOHAMMED BIN ZAYED ROAD (E311) VIEWS

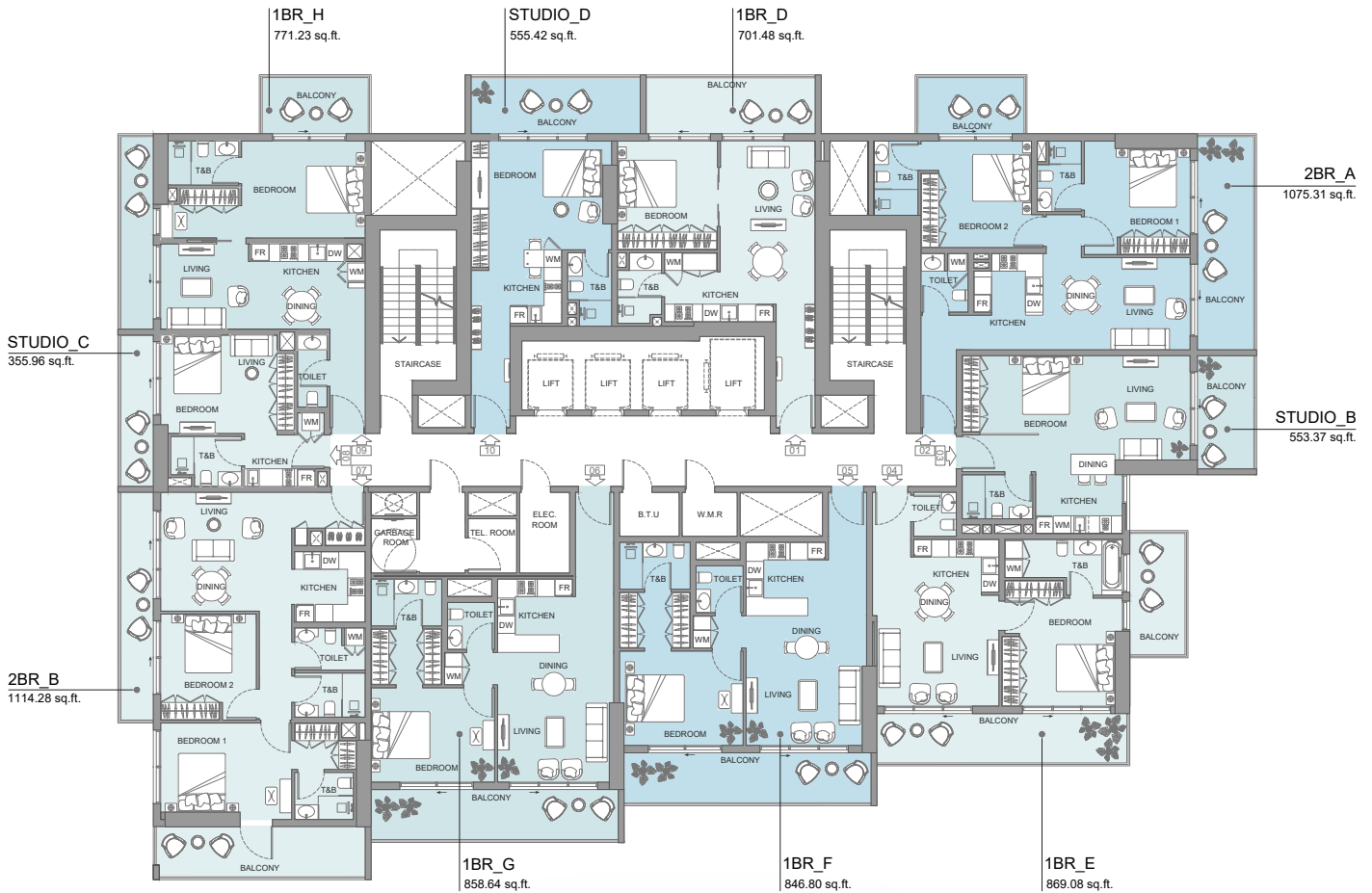
JVT COMMUNITY



TYPICAL FLOOR PLAN

FLOOR: 2 - 18

LUM1NAR
TOWER3

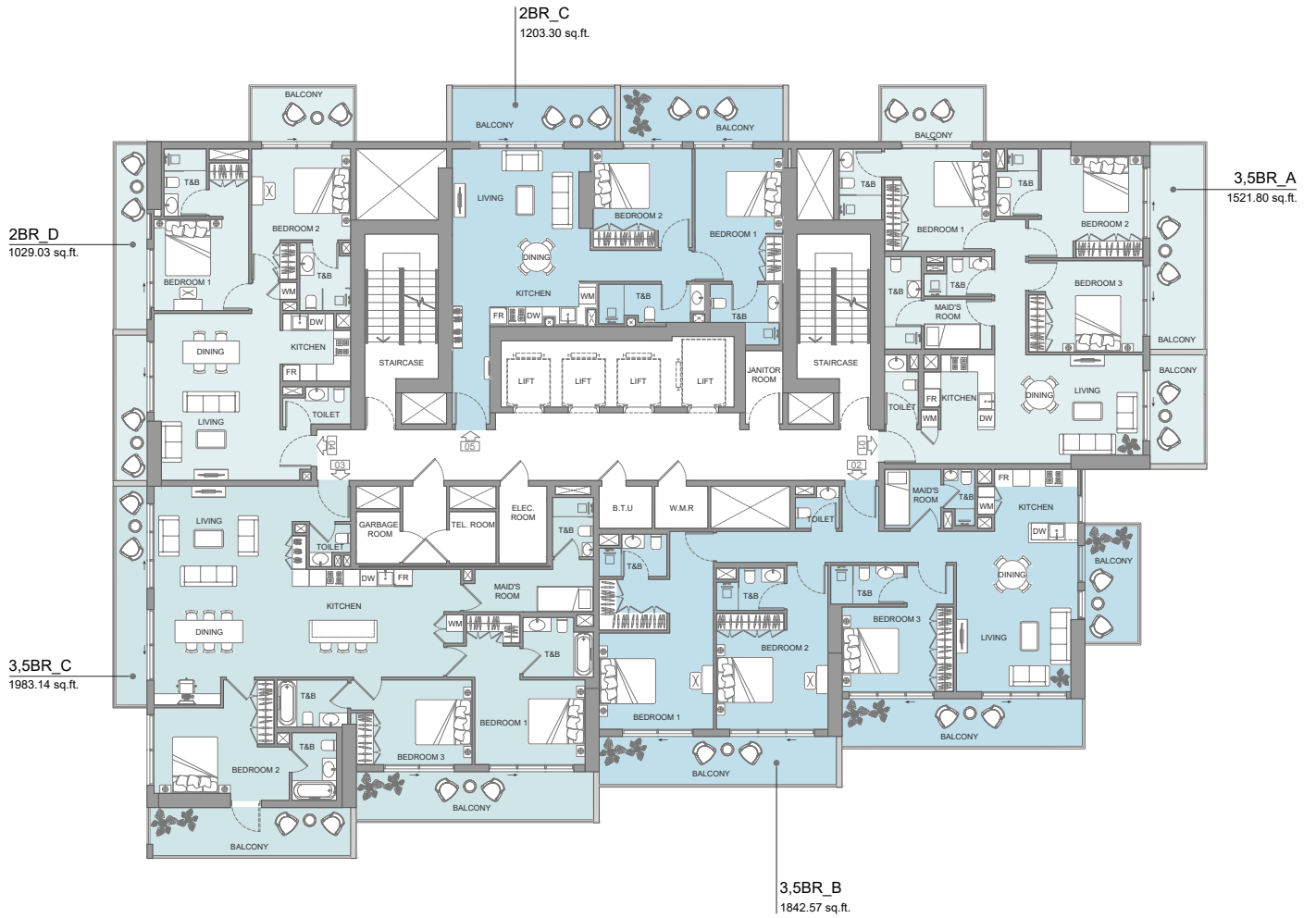


Disclaimer: all pictures, plans, layouts, information, data and details included in this brochure are indicative only may change at any time up to the final "as built" status in accordance with the final designs of the project, regulatory approvals and planning permissions

TYPICAL FLOOR PLAN

FLOOR: 19 - 20

LUM1NAR TOWER3



Disclaimer: all pictures, plans, layouts, information, data and details included in this brochure are indicative only may change at any time up to the final "as built" status in accordance with the final designs of the project, regulatory approvals and planning permissions



LUM1NAR TOWER3

