



SILVANA PARK

LIVING



Obj. 1



District 2, Jumeirah Village Triangle

Building Description:

B+G+P+5+R

RETAIL 1-2

Anticipated Handover: Q1 2027

Anticipated Service Charge: AED 15/Sq.Ft.

Inspired by *Silva* — forest — **S1LV1ANA PARK LIVING** brings the spirit of nature into the heart of Jumeirah Village Triangle. The name evokes a lush, green sanctuary, where every element is designed to offer peace, clarity, and a deep connection to the natural world. Whether it's a morning walk, an evening wind-down, or a quiet moment on your balcony, this is a place where you can breathe, recharge, and truly feel at home.



SILVANA PARK
LIVING

Floor Plans



GROUND FLOOR

FLOOR: G

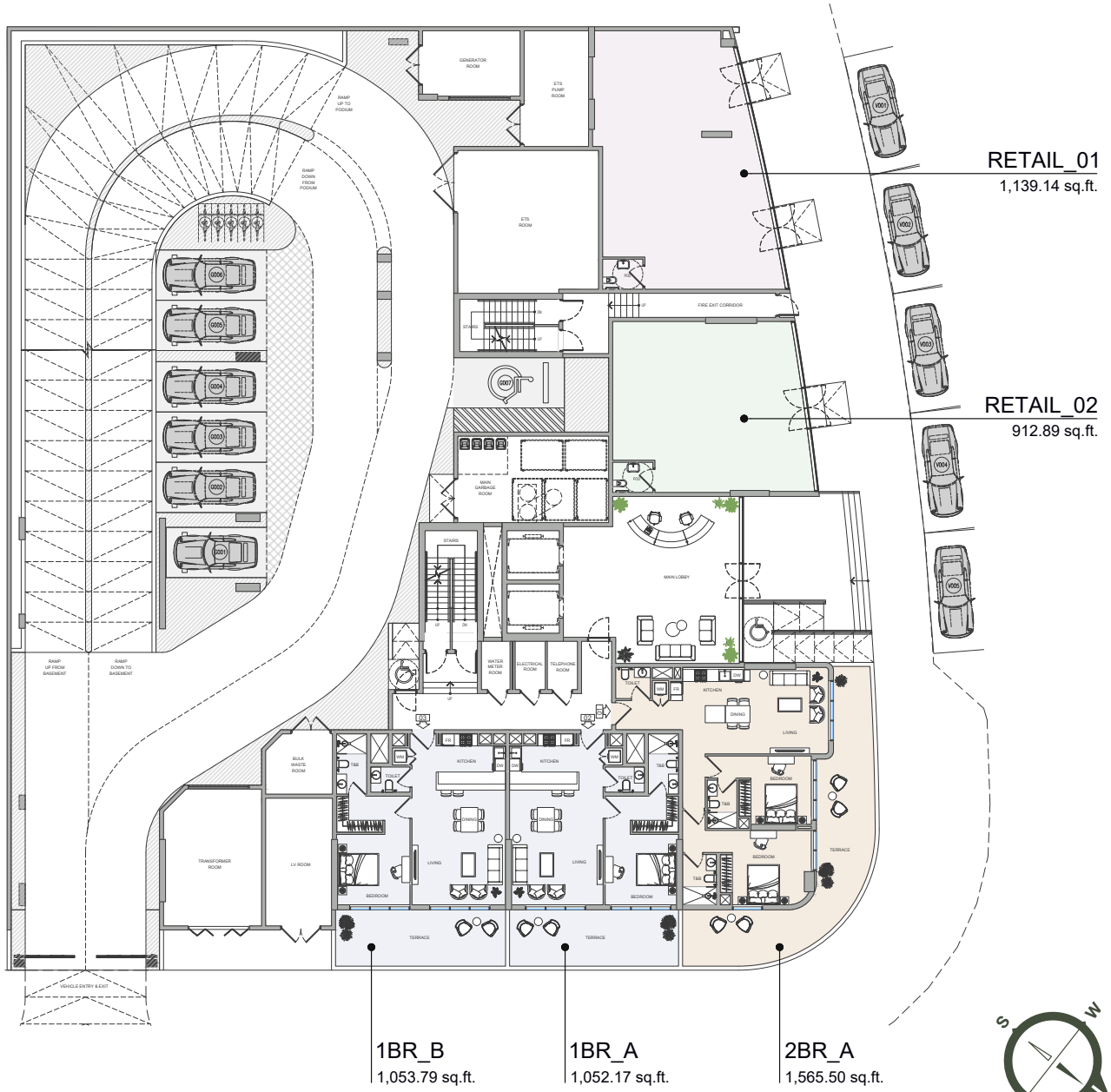


SILVANA PARK
LIVING

JVT COMMUNITY

SHEIKH MOHAMMED BIN ZAYED RD (E 311)

JUMEIRAH ISLANDS, DUBAI MARINA



RETAIL_01
1,139.14 sq.ft.

RETAIL_02
912.89 sq.ft.

1BR_B
1,053.79 sq.ft.

1BR_A
1,052.17 sq.ft.

2BR_A
1,565.50 sq.ft.

JVT COMMUNITY



Disclaimer: all pictures, plans, layouts, information, data and details included in this brochure are indicative only may change at any time up to the final "as built" status in accordance with the final designs of the project, regulatory approvals and planning permissions



SILVIANA PARK LIVING

TYPICAL FLOOR

FLOOR: 1

JVT COMMUNITY

SHEIKH MOHAMMED BIN ZAYED RD (E 311)

JUMEIRAH ISLANDS, DUBAI MARINA

1BR_D
937.97 sq.ft.

1BR_C
890.18 sq.ft.

1BR_H
890.93 sq.ft.

1BR_G
849.16 sq.ft.

2,5BR_A
1,271.86 sq.ft.

ST_A
445.41 sq.ft.

ST_B
455.85 sq.ft.

1BR_E
955.73 sq.ft.

2BR_B
1,213.74 sq.ft.

ST_E
470.60 sq.ft.

ST_D_2
480.61 sq.ft.

ST_D_1
480.61 sq.ft.

ST_C
482.44 sq.ft.

1BR_F
903.31 sq.ft.

JVT COMMUNITY





TYPICAL FLOOR

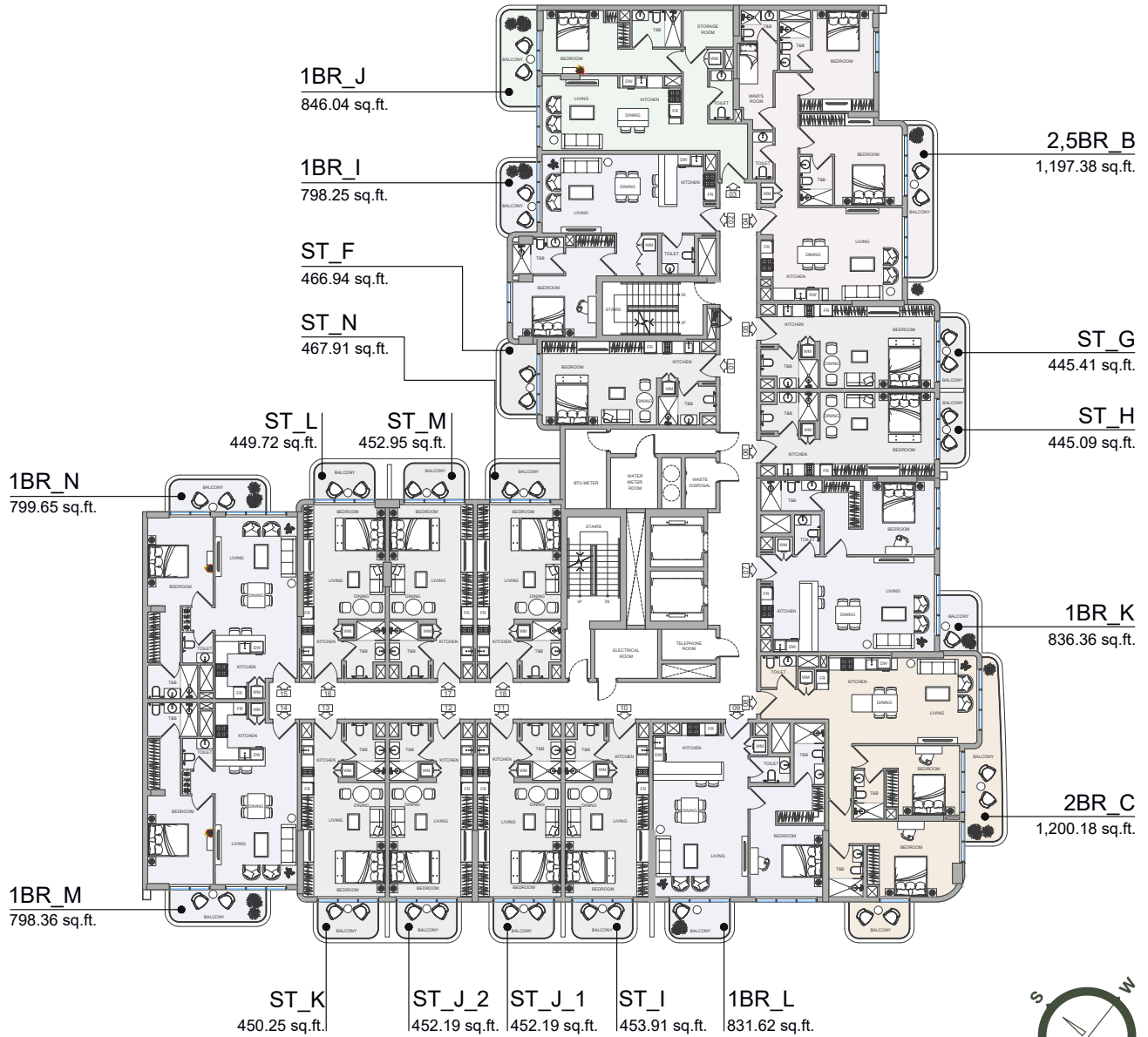
FLOOR: 2, 3

SILVANA PARK
LIVING

JVT COMMUNITY

SHEIKH MOHAMMED BIN ZAYED RD (E 311)

JUMEIRAH ISLANDS, DUBAI MARINA



JVT COMMUNITY



Disclaimer: all pictures, plans, layouts, information, data and details included in this brochure are indicative only may change at any time up to the final "as built" status in accordance with the final designs of the project, regulatory approvals and planning permissions

TYPICAL FLOOR

FLOOR: 4

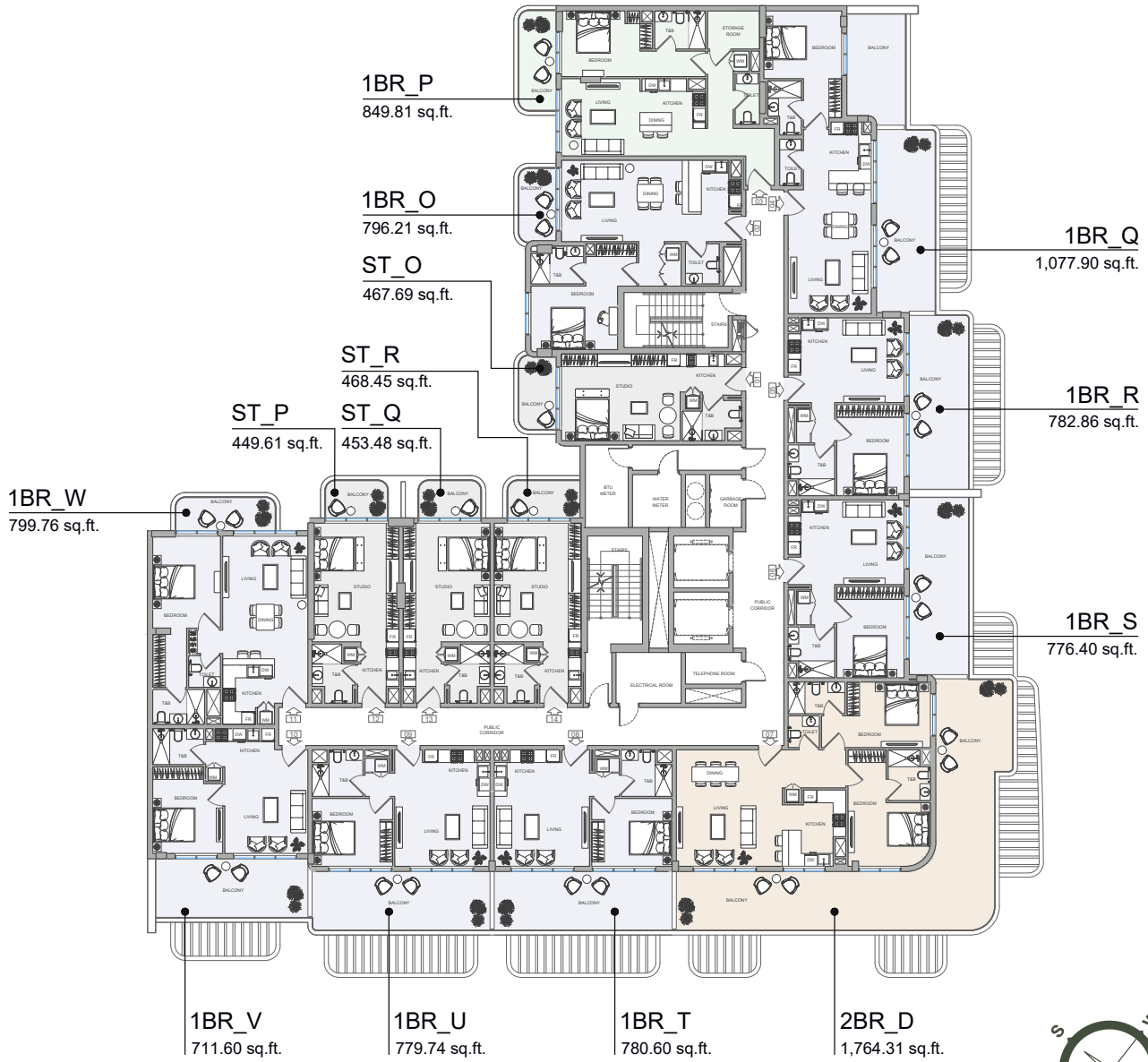


SILVANA PARK
LIVING

JVT COMMUNITY

SHEIKH MOHAMMED BIN ZAYED RD (E 311)

JUMEIRAH ISLANDS, DUBAI MARINA



Disclaimer: all pictures, plans, layouts, information, data and details included in this brochure are indicative only may change at any time up to the final "as built" status in accordance with the final designs of the project, regulatory approvals and planning permissions

TYPICAL FLOOR

FLOOR: 5

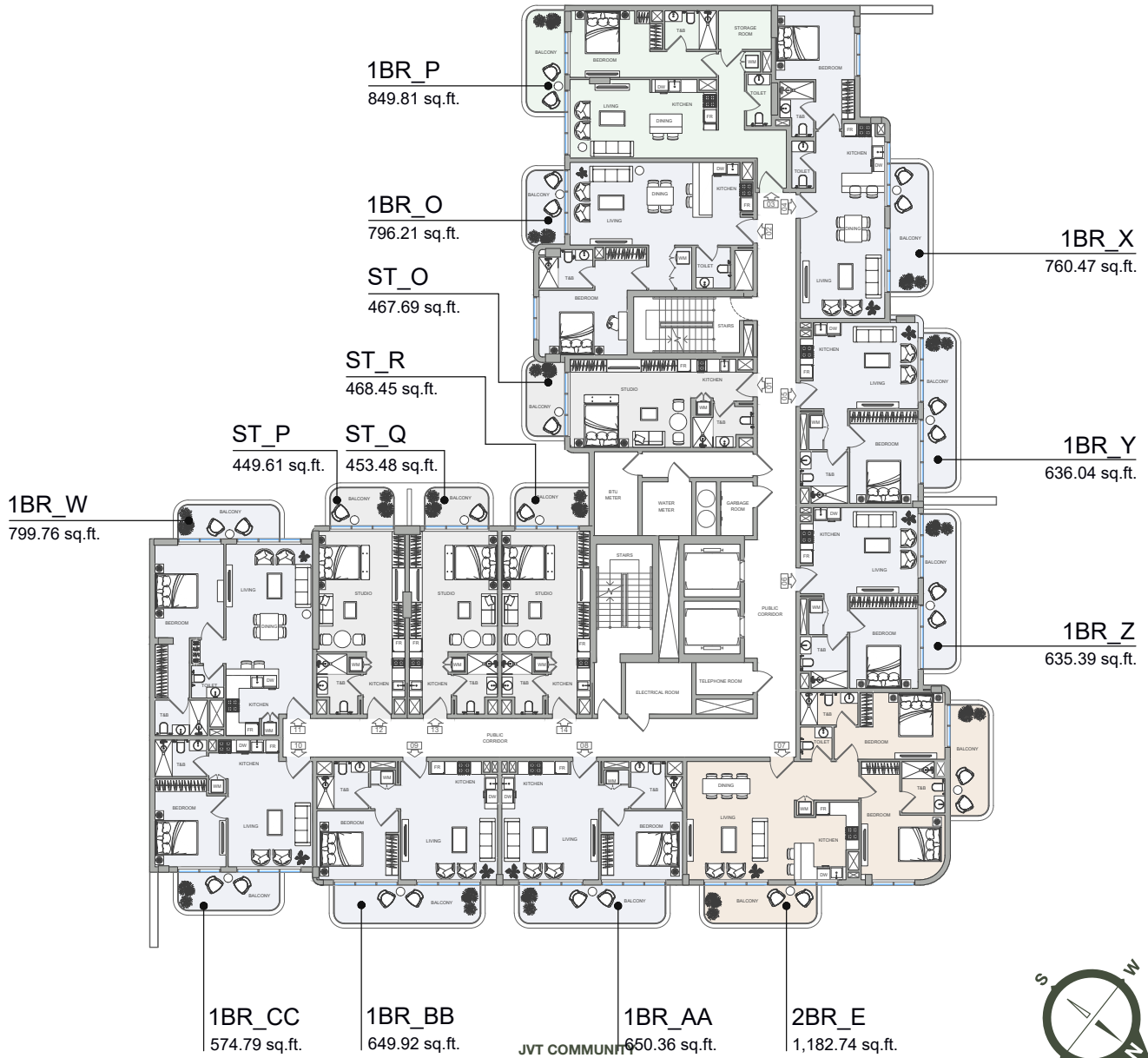


SILVANA PARK
LIVING

JVT COMMUNITY

SHEIKH MOHAMMED BIN ZAYED RD (E 311)

JUMEIRAH ISLANDS, DUBAI MARINA



Disclaimer: all pictures, plans, layouts, information, data and details included in this brochure are indicative only may change at any time up to the final "as built" status in accordance with the final designs of the project, regulatory approvals and planning permissions



Obj. 1