

The Signature Line

La Mer  

---

BY ELIE SAAB

The Signature Line



### About The Project

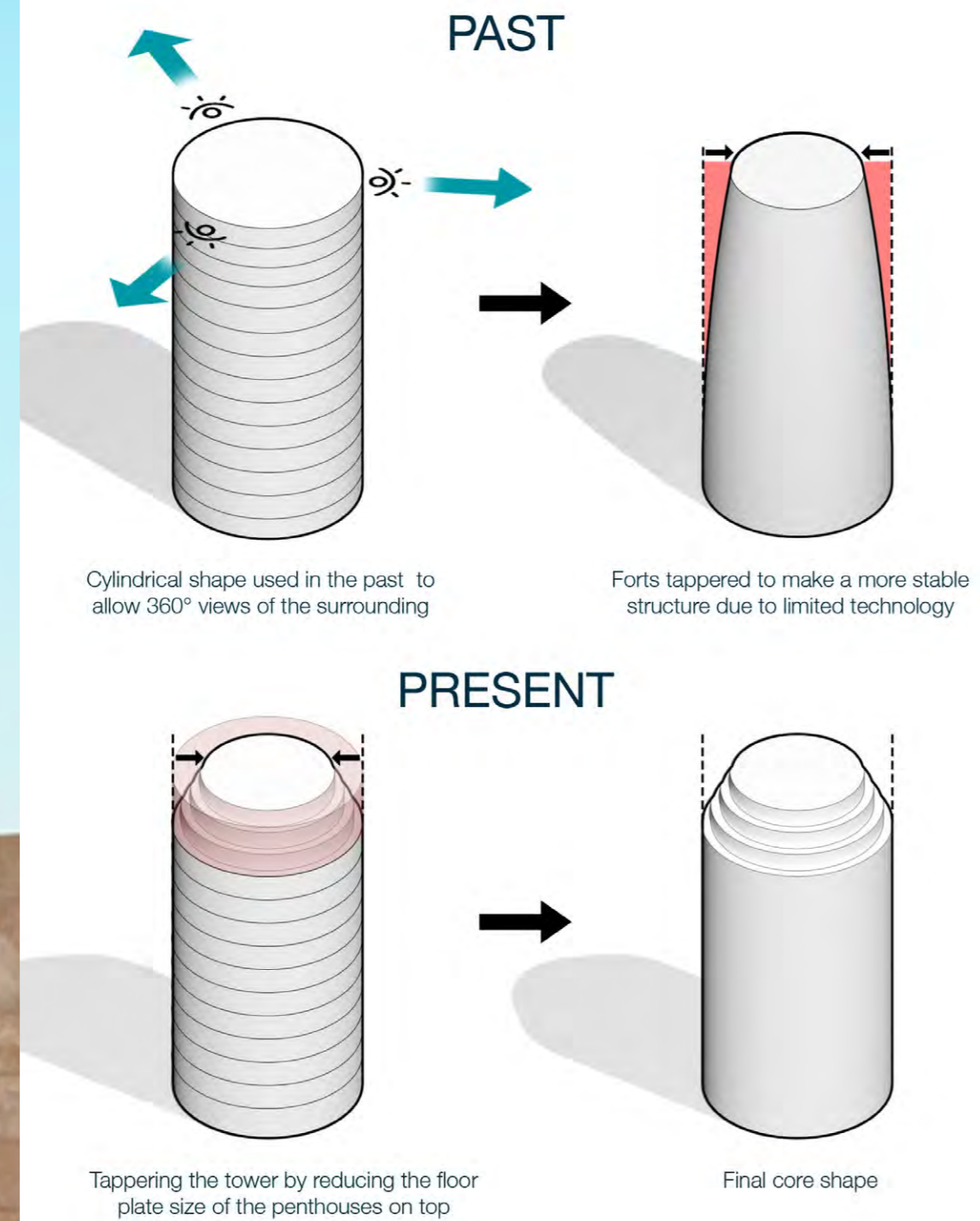
La Mer By Elie Saab is a breathtaking vision on Al Manjan Island, a luxurious development that portrays shoreline living with its unparalleled blend of bespoke and architectural finesse.

The stunning trio of towers, each uniquely named—Isle 1, Isle 2, and Isle 3—embodies the essence of elegance and sophistication. Residents are invited to embrace a lifestyle of beauty and tranquility, complemented by stunning views of the azure Gulf waters.

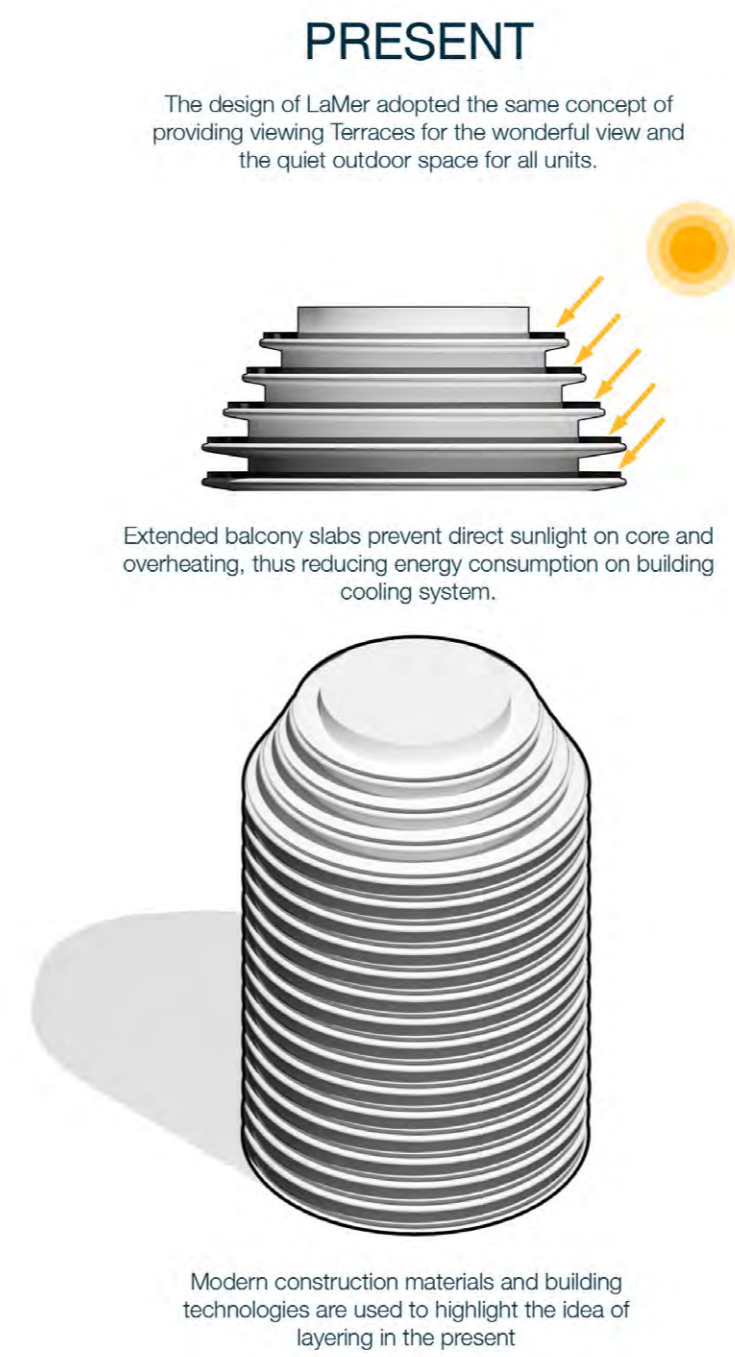
# Architectural Inspiration



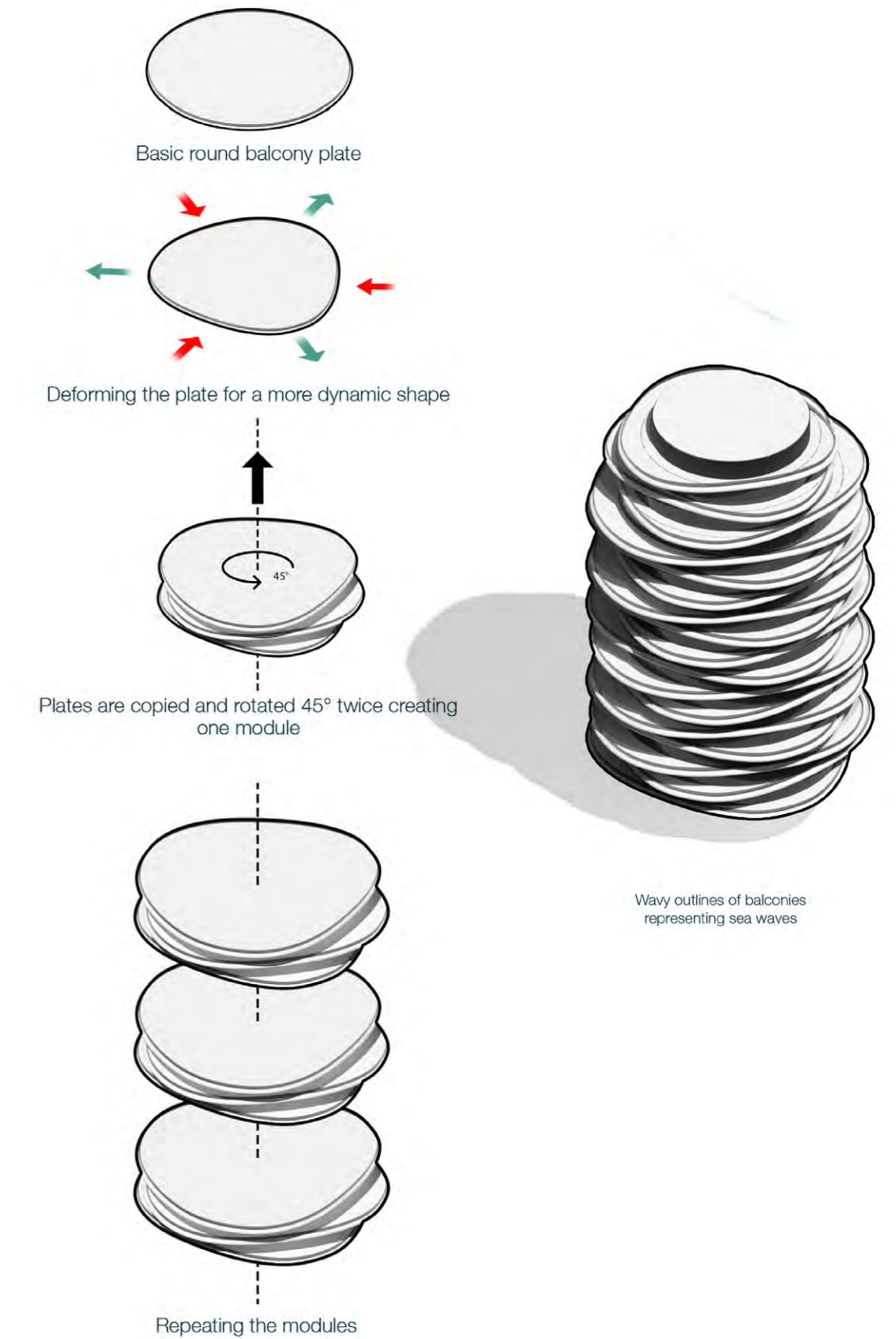
## Tapering



## Layering



## Waving



Unmatched  
Living Standards

Renowned globally for his fashion expertise, ELIE SAAB has infused these spaces with his unique touch, seamlessly blending the exterior and interior.

In this project, opulence harmonizes with creativity and imagination.





## About The Developer

ARTE Developments stands at the forefront of the real estate industry, epitomizing premium quality and excellence in every project we undertake. As a leading developer, we are dedicated to creating exceptional living spaces that combine luxury with functionality, ensuring an unparalleled living experience for our clients.

Driven by a passion for excellence, we ensure that in all our projects we collaborate with tier one industry professionals, from architects to designers to marketing experts. Our unwavering commitment to innovation and quality sets us apart, making ARTE Developments the preferred choice for our clients.

### Man-Made Haven

Al Marjan Island in Ras Al Khaimah is a captivating gem nestled along the Arabian Gulf, renowned for its pristine beaches, luxurious resorts, and vibrant leisure activities. A key feature of the island is the prestigious Wynn Resort.





This haven offers visitors a serene escape with breathtaking views of the sea and surrounding lush landscapes.



Location Map



La Mer  
BY ELIE SAAB

Wynn  
Gaming  
Resort

Disclaimer: All images used are for illustrative purposes only and do not represent the actual size, features, specifications, fittings, and furnishings. The developer reserves the right to make revisions / alterations, at its absolute discretion, without any liability whatsoever.

The Island is Calling

Disclaimer: All images used are for illustrative purposes only and do not represent the actual size, features, specifications, fittings, and furnishings. The developer reserves the right to make revisions/alterations, at its absolute discretion, without any liability whatsoever.

## Exteriors





Disclaimer: All images used are for illustrative purposes only and do not represent the actual size, features, specifications, fittings, and furnishings. The developer reserves the right to make revisions / alterations, at its absolute discretion, without any liability whatsoever.

Awaken to the Ocean's Embrace



Disclaimer: All images used are for illustrative purposes only and do not represent the actual size, features, specifications, fittings, and furnishings. The developer reserves the right to make revisions / alterations, at its absolute discretion, without any liability whatsoever.



Disclaimer: All images used are for illustrative purposes only and do not represent the actual size, features, or specifications, fittings, and furnishings. The developer reserves the right to make revisions/alterations at its absolute discretion, without any liability whatsoever.

Flow through  
a Life of Luxury



Disclaimer: All images used are for illustrative purposes only and do not represent the actual size, features, specifications, fittings, and furnishings. The developer reserves the right to make revisions / alterations, at its absolute discretion, without any liability whatsoever.

Coastal Dreams  
Brought to Life





Disclaimer: All images used are for illustrative purposes only and do not represent the actual size, features, specifications, fittings, and furnishings. The developer reserves the right to make revisions/alterations, at its absolute discretion, without any liability whatsoever.

La Mer  
BY ELIE SAAB



Disclaimer: All images used are for illustrative purposes only and do not represent the actual size, features, specifications, fittings, and furnishings. The developer reserves the right to make revisions / alterations, at its absolute discretion, without any liability whatsoever.



Disclaimer: All images used are for illustrative purposes only and do not represent the actual size, features, specifications, fittings, and furnishings. The developer reserves the right to make revisions / alterations, at its absolute discretion, without any liability whatsoever.



Disclaimer: All images used are for illustrative purposes only and do not represent the actual size, features, specifications, fittings, and furnishings. The developer reserves the right to make revisions / alterations, at its absolute discretion, without any liability whatsoever.

## Wellness Spa



# Penthouse



## Penthouse - Type 02

Suite Area 7,584 Sqft

Balcony Area 6,901 Sqft

Total Area 14,485

Available in:  
Isle 1, Level 17



## Penthouse - Type 03

Suite Area	4,281 Sqft
Balcony Area	6,172 Sqft
<b>Total Area</b>	<b>10,453 Sqft</b>

Available in:  
Isle 2 & 3, Level 17









Disclaimer: All images used are for illustrative purposes only and do not represent the actual size, features, specifications, fittings, and furnishings. The developer reserves the right to make revisions / alterations, at its absolute discretion, without any liability whatsoever.



Disclaimer: All images used are for illustrative purposes only and do not represent the actual size, features, specifications, fittings, and furnishings. The developer reserves the right to make revisions / alterations, at its absolute discretion, without any liability whatsoever.

Cinema Lounge





Sauna Room



Disclaimer: All images used are for illustrative purposes only and do not represent the actual size, features, specifications, fittings, and furnishings. The developer reserves the right to make revisions / alterations, at its absolute discretion, without any liability whatsoever.

Master Bedroom





Disclaimer: All images used are for illustrative purposes only and do not represent the actual size, features, applications, fittings, and furnishings. The developer reserves the right to make revisions / alterations, at its absolute discretion, without any liability whatsoever.



Disclaimer: All images used are for illustrative purposes only and do not represent the actual size, features, specifications, fittings and furnishings. The developer reserves the right to make revisions / alterations, at its absolute discretion, without any liability whatsoever.

# Villa



## Villa - Type 01

Suite Area 6,251 Sqft

Balcony Area 2,111 Sqft

Total Area 8,363 Sqft

Available On:  
Ground Level

### Level 1



### Level 2



## Villa - Type 02

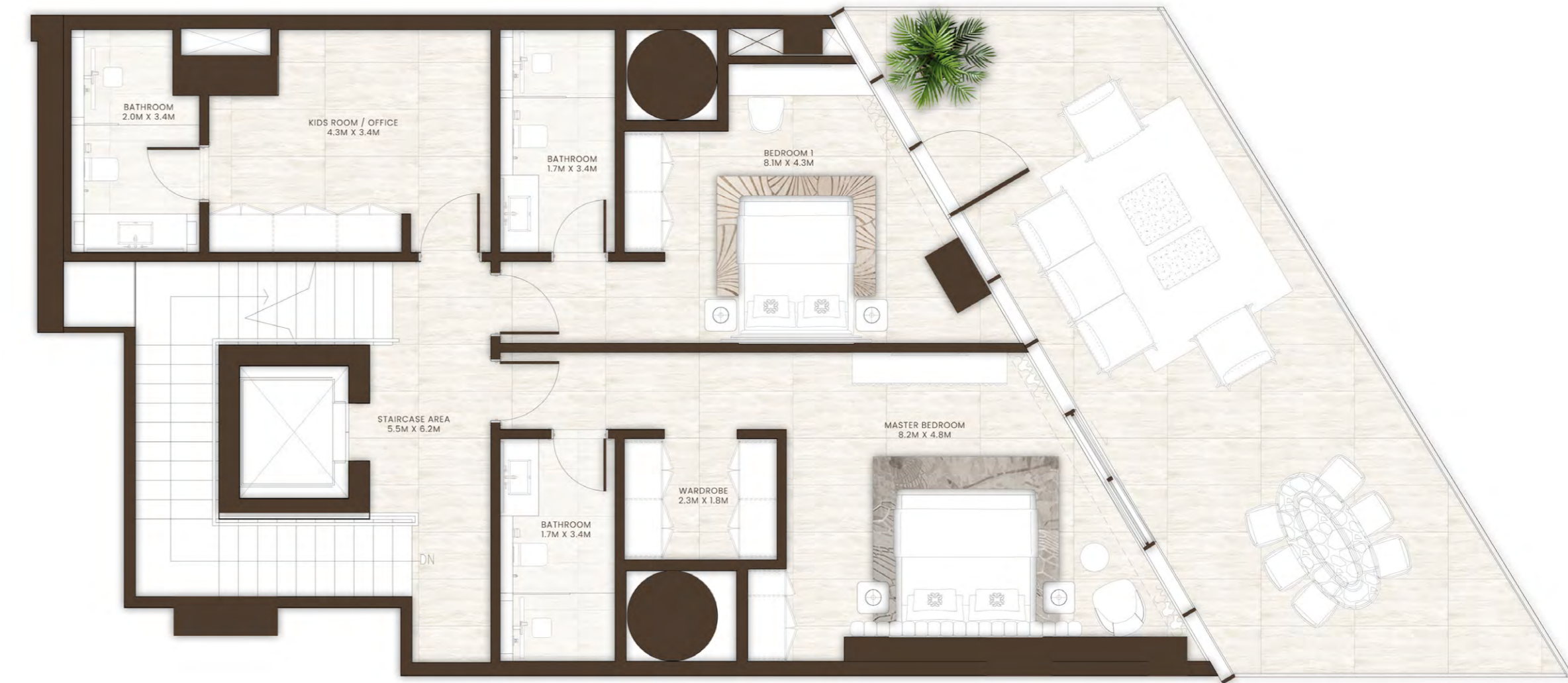
Suite Area 3,759 Sqft

Balcony Area 990 Sqft

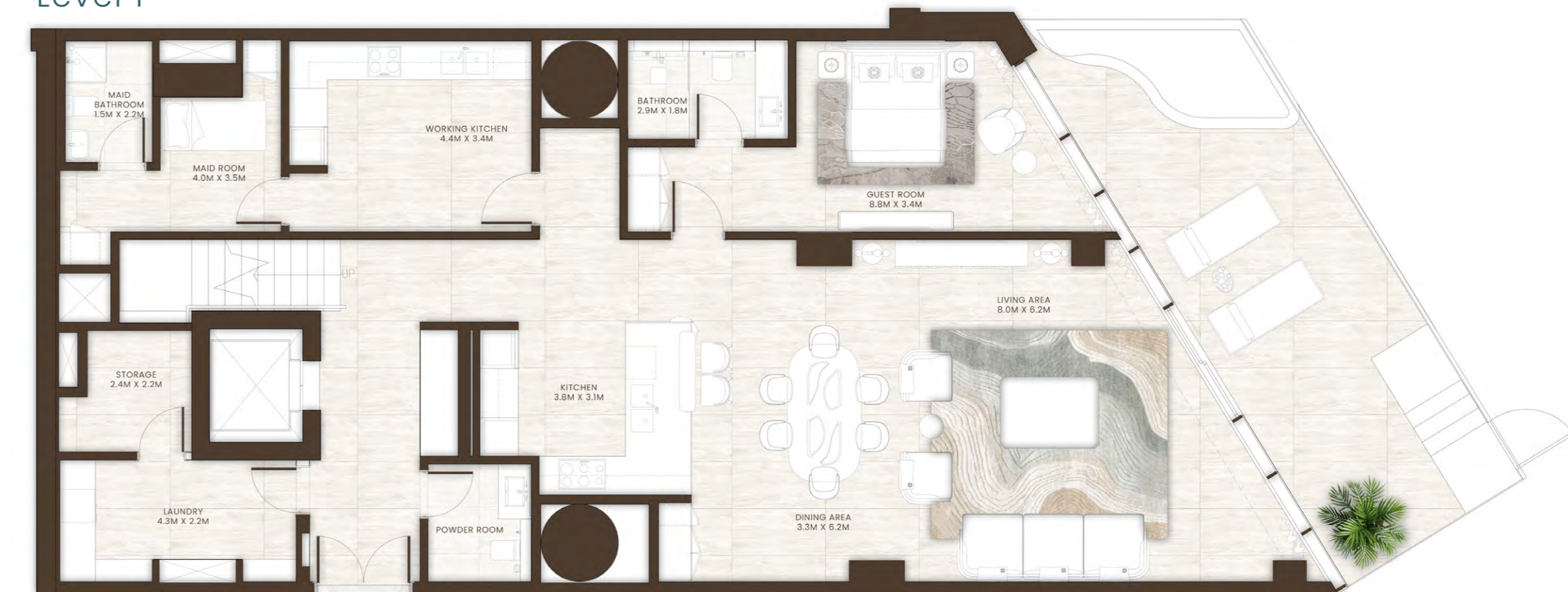
Total Area 4,749 Sqft

Available On:  
Ground Level

Level 2



Level 1







Disclaimer: All images used are for illustrative purposes only and do not represent the actual size, features, specifications, fittings, and furnishings. The developer reserves the right to make revisions / alterations, at its absolute discretion, without any liability whatsoever.

Office



Disclaimer: All images used are for illustrative purposes only and do not represent the actual size, features, specifications, fittings, and furnishings. The developer reserves the right to make revisions / alterations, at its absolute discretion, without any liability whatsoever.



Disclaimer: All images used are for illustrative purposes only and do not represent the actual size, features, specifications, fittings, and furnishings. The developer reserves the right to make revisions / alterations, at its absolute discretion, without any liability whatsoever.

TV Room





Inspired Details

Disclaimer: All images used are for illustrative purposes only and do not represent the actual size, features, specifications, fittings, and furnishings. The developer reserves the right to make revisions / alterations, at its absolute discretion, without any liability whatsoever.



Disclaimer: All images used here for illustrative purposes only and do not represent the actual size, features, specifications, fittings, and furnishings. The developer reserves the right to make revisions / alterations, at its absolute discretion, without any liability whatsoever.

## Ground Level Podium Roof Level

### Ground Level

- Kids' Club & Outdoor Play Area
- Spa
- Gym
- Grand Pool & Kids' Pool
- Chauffeurs' Lounge

### Level 01

- Serenity Park
- Signature Lounge

### Level 03

- Link Garden

### Level 18

- Sky Gym
- Sky Co-working Space
- Sky Lounge
- Sky Pool & Deck



## Amenities

Sky Pool



Awaken to the Ocean's Embrace



Disclaimer: All images used are for illustrative purposes only and do not represent the actual size, features, specifications, fittings, and furnishings. The developer reserves the right to make revisions / alterations, at its absolute discretion, without any liability whatsoever.



Disclaimer: All images used are for illustrative purposes only and do not represent the actual size, features, specifications, fittings, and furnishings. The developer reserves the right to make revisions / alterations, at its absolute discretion, without any liability whatsoever.



Disclaimer: All images used are for illustrative purposes only and do not represent the actual size, features, specifications, fittings, and furnishings. The developer reserves the right to make revisions/alterations, at its absolute discretion, without any liability whatsoever.

A Beachfront  
Statement



Disclaimer: All images used are for illustrative purposes only and do not represent the actual size, features, specifications, fittings, and furnishings. The developer reserves the right to make revisions / alterations, at its absolute discretion, without any liability whatsoever.

Serenity flows  
with Every Wave

Disclaimer: All images used are for illustrative purposes only and do not represent the actual size, features, specifications, fittings, and furnishings. The developer reserves the right to make revisions / alterations, at its absolute discretion, without any liability whatsoever.



Grand Pool



Disclaimer: All images used are for illustrative purposes only and do not represent the actual size, features, specifications, fittings, and furnishings. The developer reserves the right to make revisions / alterations, at its absolute discretion, without any liability whatsoever.



Link Garden

## Project Details

Project Name	La Mer				
Developer	Arte Real Estate Development LLC				
Architect	Dewan Architects + Engineers				
Location	Al Marjan Island 2 , Ras Al - Khaimah				
Anticipated Completion Date	Q4 2028				
Anticipated Service Charges	22 AED / sq.ft				
Unfurnished	Yes				
White Goods	Built-in Fridge and Freezer Built-in Hob and Oven Washing Machine Built-in Dishwasher (2BR onwards)				
Brand of White Goods	Siemens or equivalent - Apartments Miele or equivalent - Penthouses and Villas				
Sanitary Brand	Geberit or equivalent – Sanitary ware Gessi or equivalent – Sanitry fittings				
Elevators	Residential x 12 Service x 3				
Parking	<table border="1"> <thead> <tr> <th>Penthouse</th> <th>Villa</th> </tr> </thead> <tbody> <tr> <td>4</td> <td>2-3</td> </tr> </tbody> </table>	Penthouse	Villa	4	2-3
Penthouse	Villa				
4	2-3				

**Disclaimer:** All images used are for illustrative purposes only and do not represent the actual size, features, specifications, fittings, and furnishings. The developer reserves the right to make revisions / alterations, at its absolute discretion, without any liability whatsoever.





Listen to the Waves

The Island is Calling



Disclaimer: All images used are for illustrative purposes only and do not represent the actual size, features, specifications, fittings, and furnishings. The developer reserves the right to make revisions / alterations, at its absolute discretion, without any liability whatsoever.

La Mer  

---

BY ELIE SAAB

The Signature Line

