



EVERGRIN

HOUSE

Obj.1



EVERGR1N

HOUSE

A Sanctuary of Modern Elegance and Natural Harmony

Nestled in the vibrant heart of Jumeirah Garden City in Dubai, EVERGR1N HOUSE embodies the perfect fusion of modern design and the serene beauty of nature. Imagine a lifestyle where urban sophistication meets the tranquility of green living, all within the dynamic surroundings of one of the world's most iconic cities.

Building Description: G+2P+8

Anticipated Handover: Q2 2026

STUDIO	1 BEDROOM	2 BEDROOM	TOTAL
175	36	8	219

EVERGRIN
HOUSE

Floor Plans



Object 1

Object 1

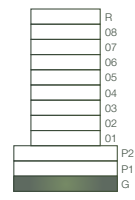
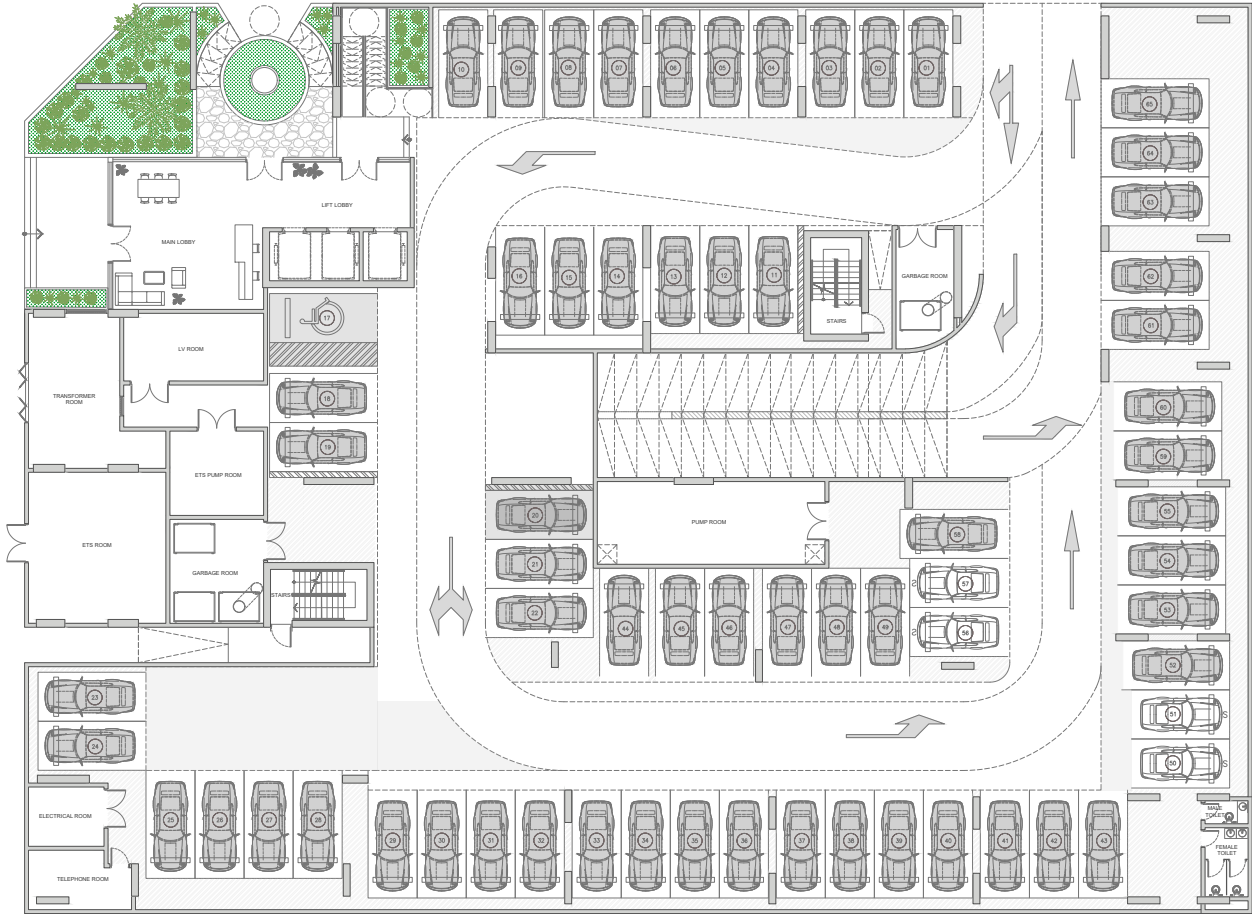
Object 1

GOUND FLOOR PLAN

FLOOR: G

EVERGRIN

HOUSE

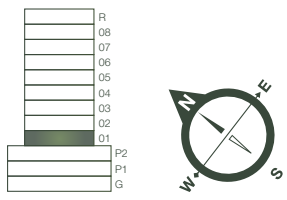


Disclaimer: all pictures, plans, layouts, information, data and details included in this brochure are indicative only may change at any time up to the final "as built" status in accordance with the final designs of the project, regulatory approvals and planning permissions

TYPICAL FLOOR PLAN

FLOOR: 1

EVERGRIN
HOUSE



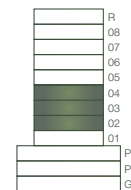
Disclaimer: all pictures, plans, layouts, information, data and details included in this brochure are indicative only may change at any time up to the final "as built" status in accordance with the final designs of the project, regulatory approvals and planning permissions

TYPICAL FLOOR PLAN

FLOOR: 2 - 4

EVERGRIN

HOUSE



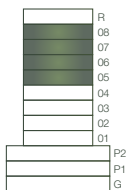
Disclaimer: all pictures, plans, layouts, information, data and details included in this brochure are indicative only may change at any time up to the final "as built" status in accordance with the final designs of the project, regulatory approvals and planning permissions

TYPICAL FLOOR PLAN

FLOOR: 5 - 8

EVERGRIN

HOUSE



Disclaimer: all pictures, plans, layouts, information, data and details included in this brochure are indicative only may change at any time up to the final "as built" status in accordance with the final designs of the project, regulatory approvals and planning permissions



EVERGRIN

HOUSE



Object 1
object-1.com