



**BR**

**BAY RESIDENCES**

FLOOR PLANS

# 1

## BEDROOM APARTMENT

### TYPE 1

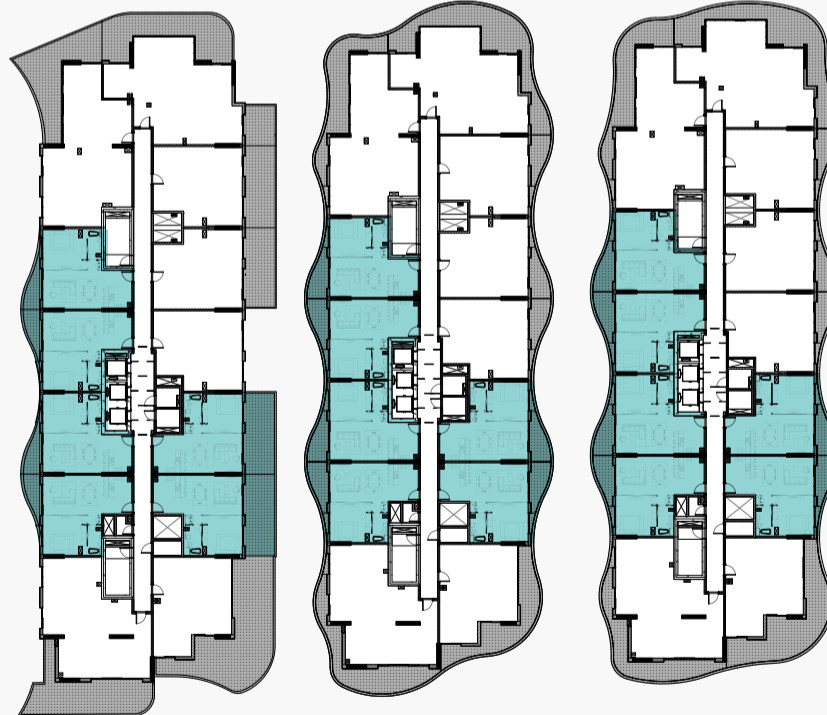
	Sq.f	Sq.mt
Unit Area	721.188	67
Balcony Area	96.876	9
<b>Total Area</b>	<b>818.064</b>	<b>76</b>



Level 1

Level 2,4,6,8,10,12,14

Level 3,5,7,9,11,13



Units | 101,102,107,108,111,112,201,202,208,209,212,213,301,302,308,309,312,313,401,402,408,409,412,413,501,502,508,509,512,513,601,602,608,609,612,613,701,702,708,709,712,713,801,802,808,809,812,813,901,902,908,909,912,913,1001,1002,1008,1009,1012,1013,1101,1102,1108,1109,1112,1113,1201,1202,1208,1209,1212,1213,1301,1306,1307,1310,1311,1401,1406,1407,1410,1411

Floor plan numbers, square footage, and floor plans are approximate. Final dimensions, square footage and floor plans may vary or may be mirrored. Balcony areas for each type differ.



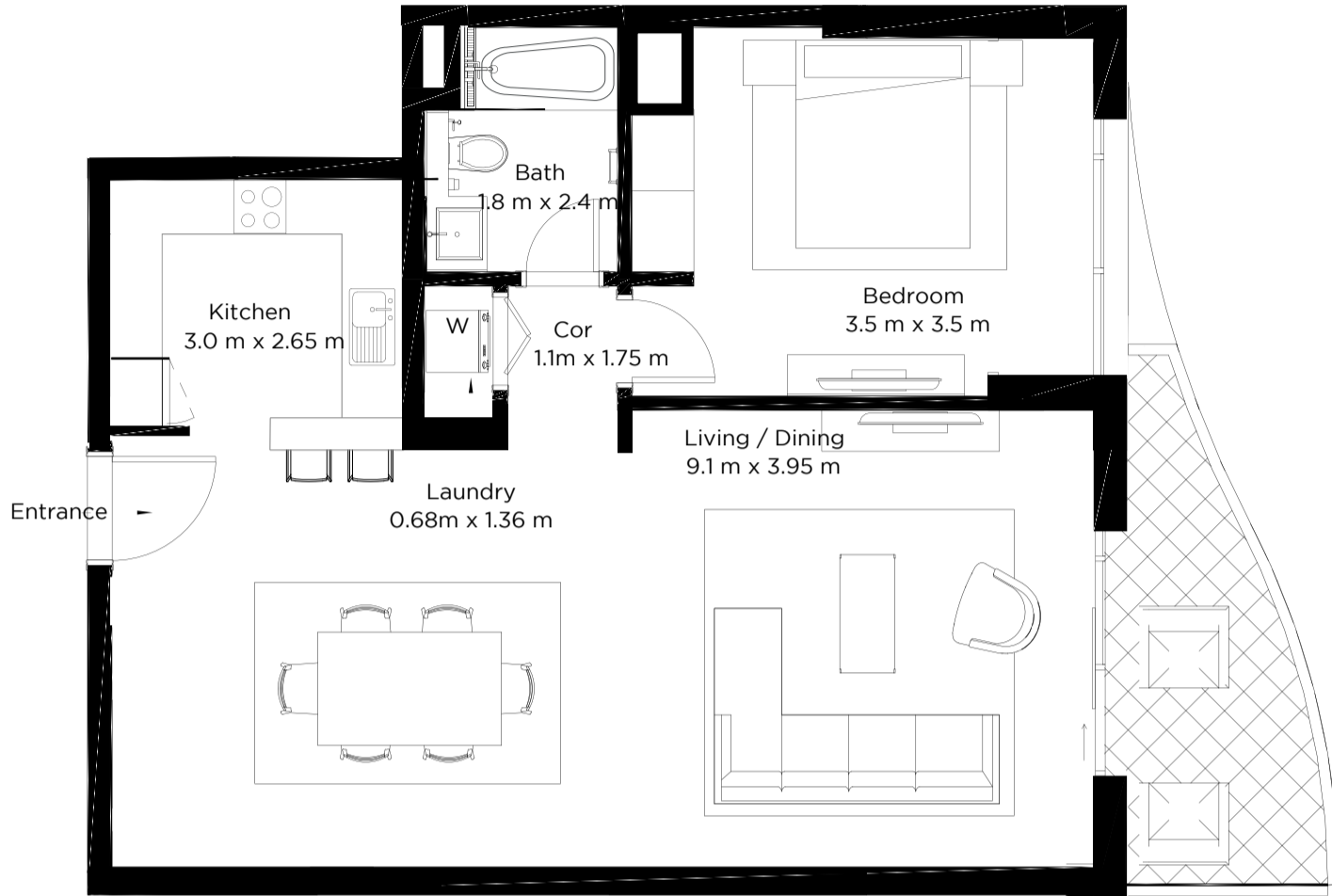
رأس الخيمة العقارية  
RAK PROPERTIES

# 1

## BEDROOM APARTMENT

### TYPE 1.2

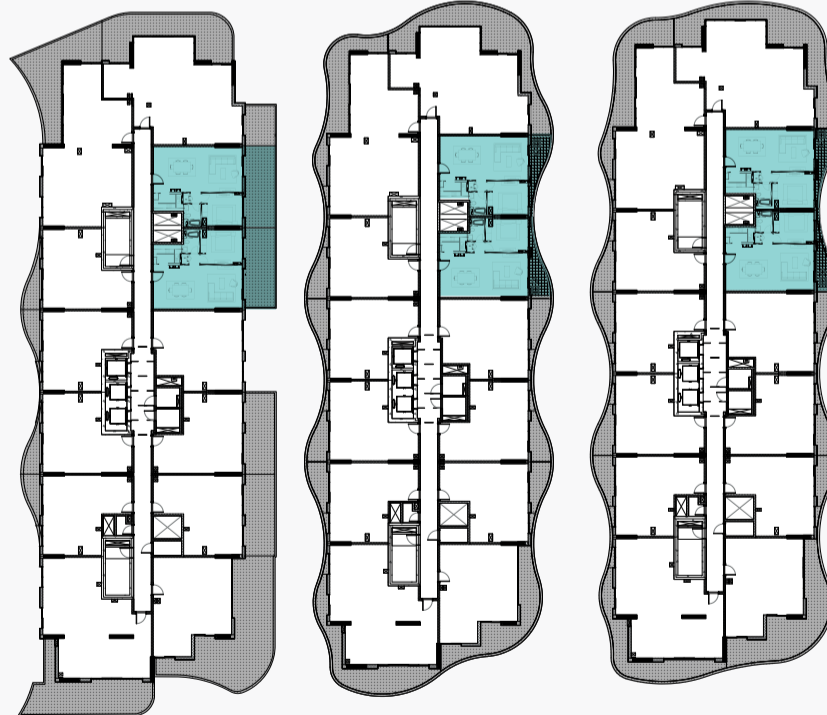
	Sq.f	Sq.mt
Unit Area	796.536	74
Balcony Area	96.876	9
<b>Total Area</b>	<b>893.412</b>	<b>83</b>



Level 1

Level 2,4,6,8,10,12,14

Level 3,5,7,9,11,13



Units | 105,106,205,206,305,306,405,406,505,506,605,606,705,706,805,806,905,906,1005,1006,1105,1106,1205,1206,1304,1404

Floor plan numbers, square footage, and floor plans are approximate. Final dimensions, square footage and floor plans may vary or may be mirrored. Balcony areas for each type differ.



رأس الخيمة العقارية  
RAK PROPERTIES

# 1

BEDROOM APARTMENT

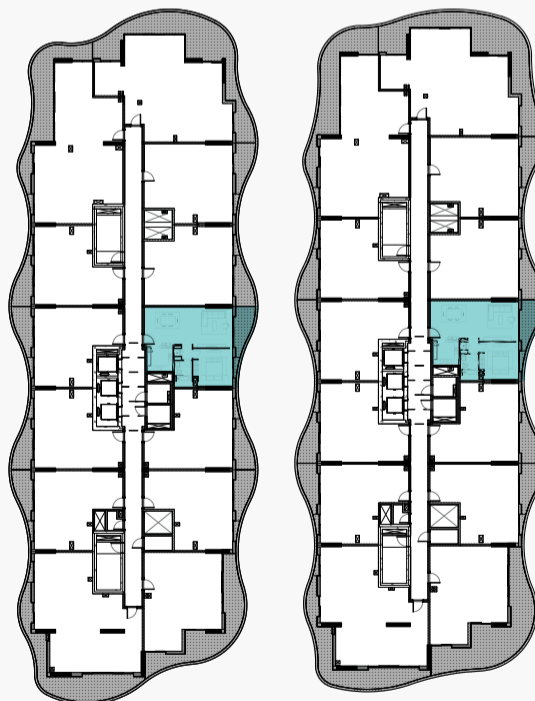
## TYPE 1.3

	Sq.f	Sq.mt
<b>Unit Area</b>	785.772	73
<b>Balcony Area</b>	96.876	9
<b>Total Area</b>	882.648	82



Level 2,4,6,8,10,12,14

Level 3,5,7,9,11,13



Units | 207,307,407,507,607,707,807,907,1007,1107,1207,1305,1405

Floor plan numbers, square footage, and floor plans are approximate. Final dimensions, square footage and floor plans may vary or may be mirrored. Balcony areas for each type differ.



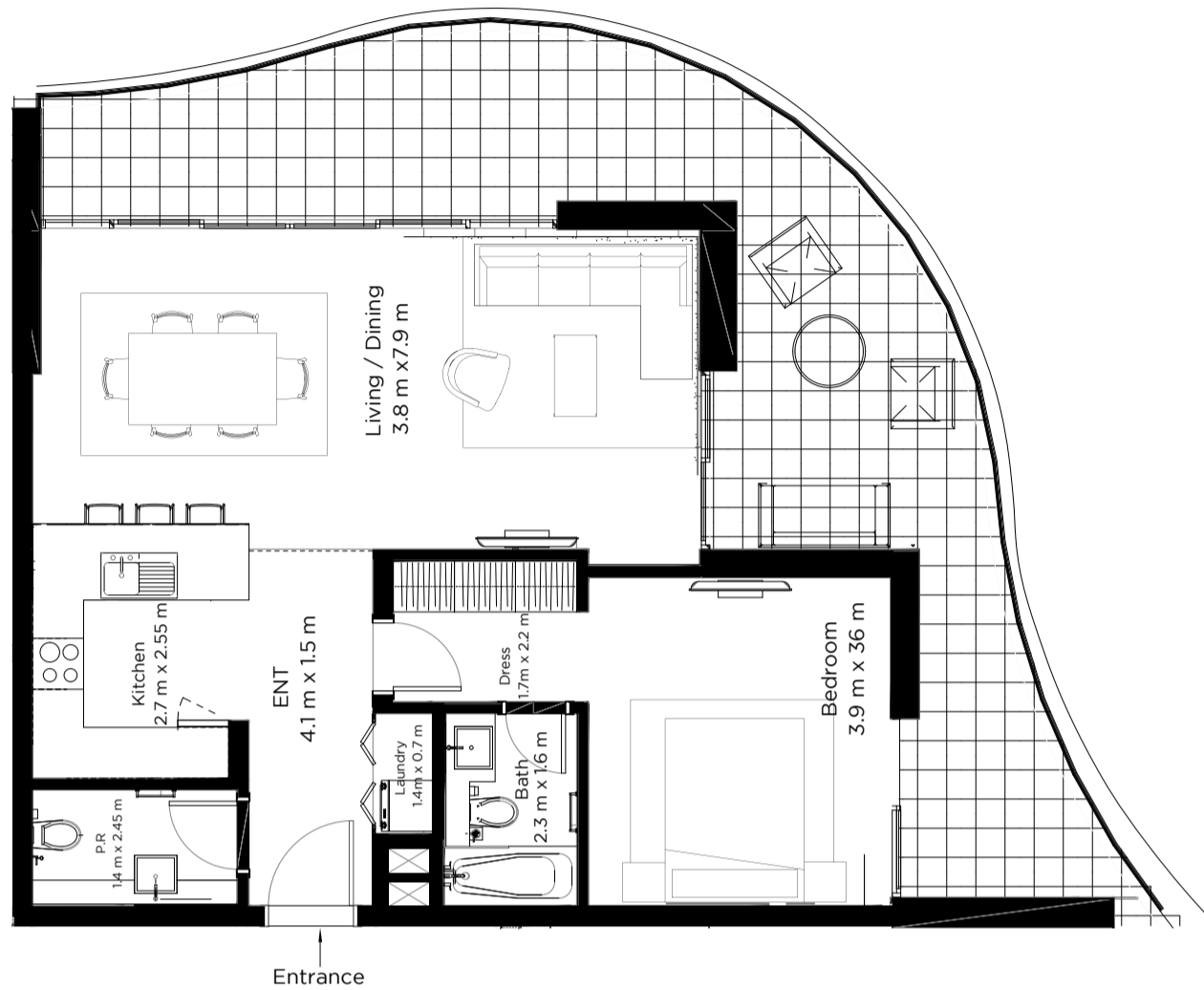
رأس الخيمة العقارية  
RAK PROPERTIES

# 1

## BEDROOM APARTMENT

### TYPE 6

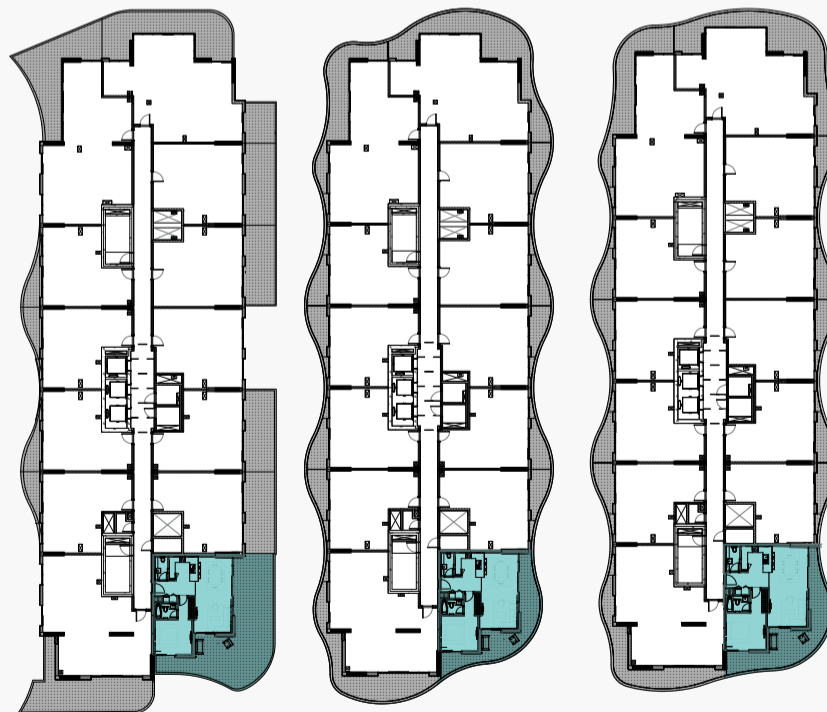
	Sq.f	Sq.mt
Unit Area	828.828	77
Balcony Area	355.212	33
<b>Total Area</b>	<b>1184.04</b>	<b>110</b>



Level 1

Level 2,4,6,8,10,12,14

Level 3,5,7,9,11,13



Units | 109,210,310,410,510,610,710,810,910,1010,1110,1210,1308,1408

Floor plan numbers, square footage, and floor plans are approximate. Final dimensions, square footage and floor plans may vary or may be mirrored. Balcony areas for each type differ.



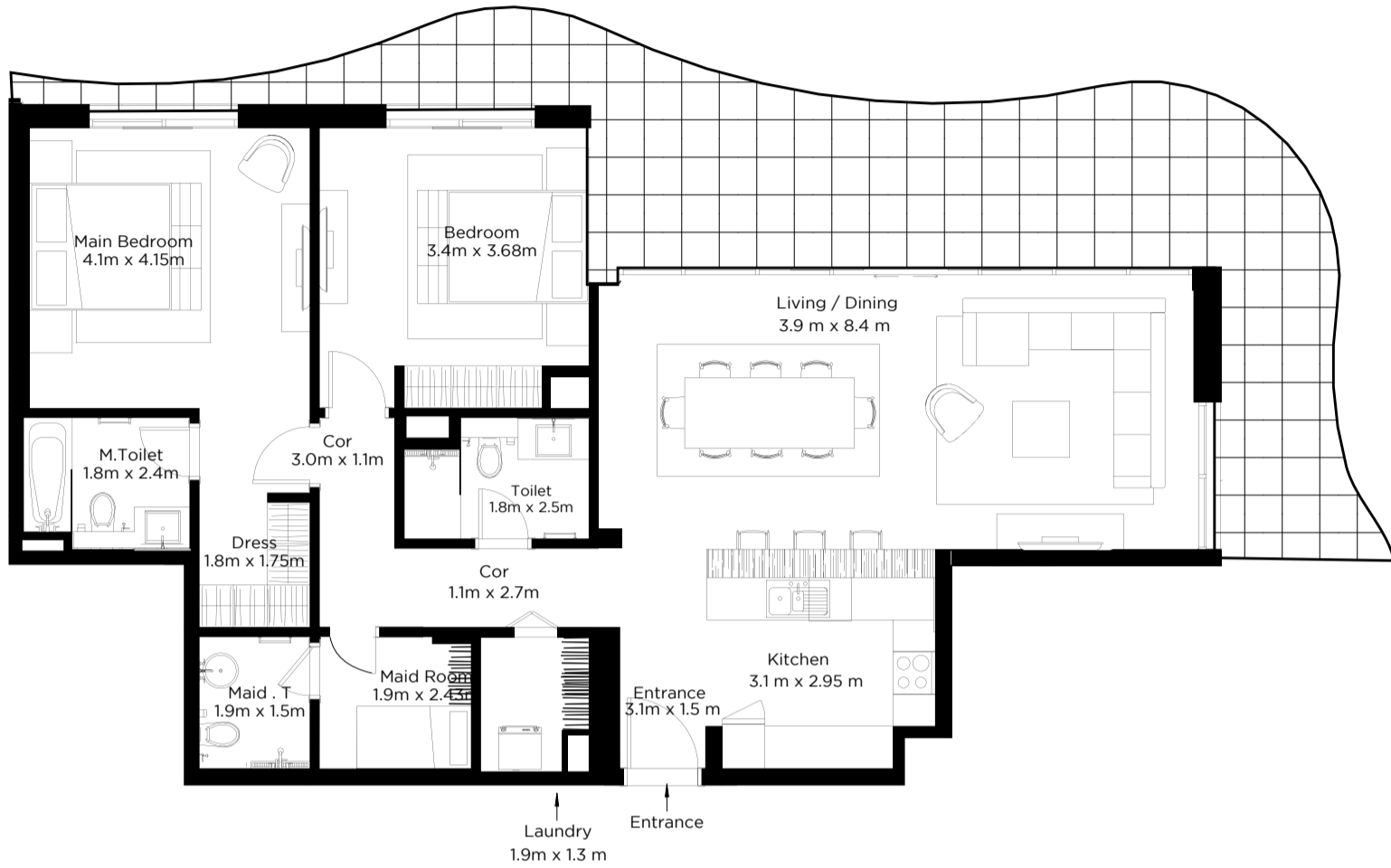
رأس الخيمة العقارية  
RAK PROPERTIES

# 2

## BEDROOM APARTMENT

### TYPE 1

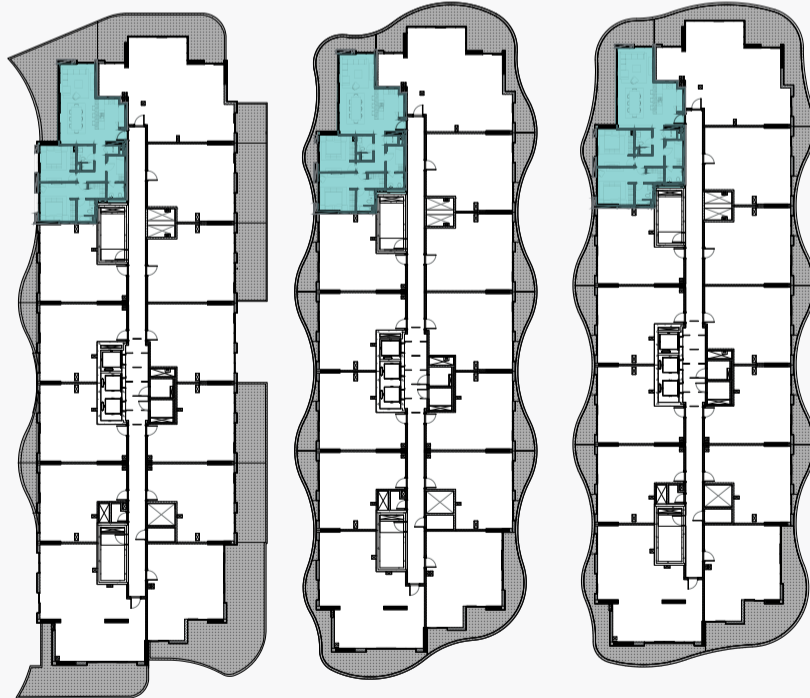
	Sq.f	Sq.mt
<b>Unit Area</b>	1313.208	122
<b>Balcony Area</b>	355.212	33
<b>Total Area</b>	1668.42	155



Level 1

Level 2,4,6,8,10,12

Level 3,5,7,9,11



Units | 103, 203, 303, 403, 503, 603, 703, 803, 903, 1003, 1103, 1203

Floor plan numbers, square footage, and floor plans are approximate. Final dimensions, square footage and floor plans may vary or may be mirrored. Balcony areas for each type differ.



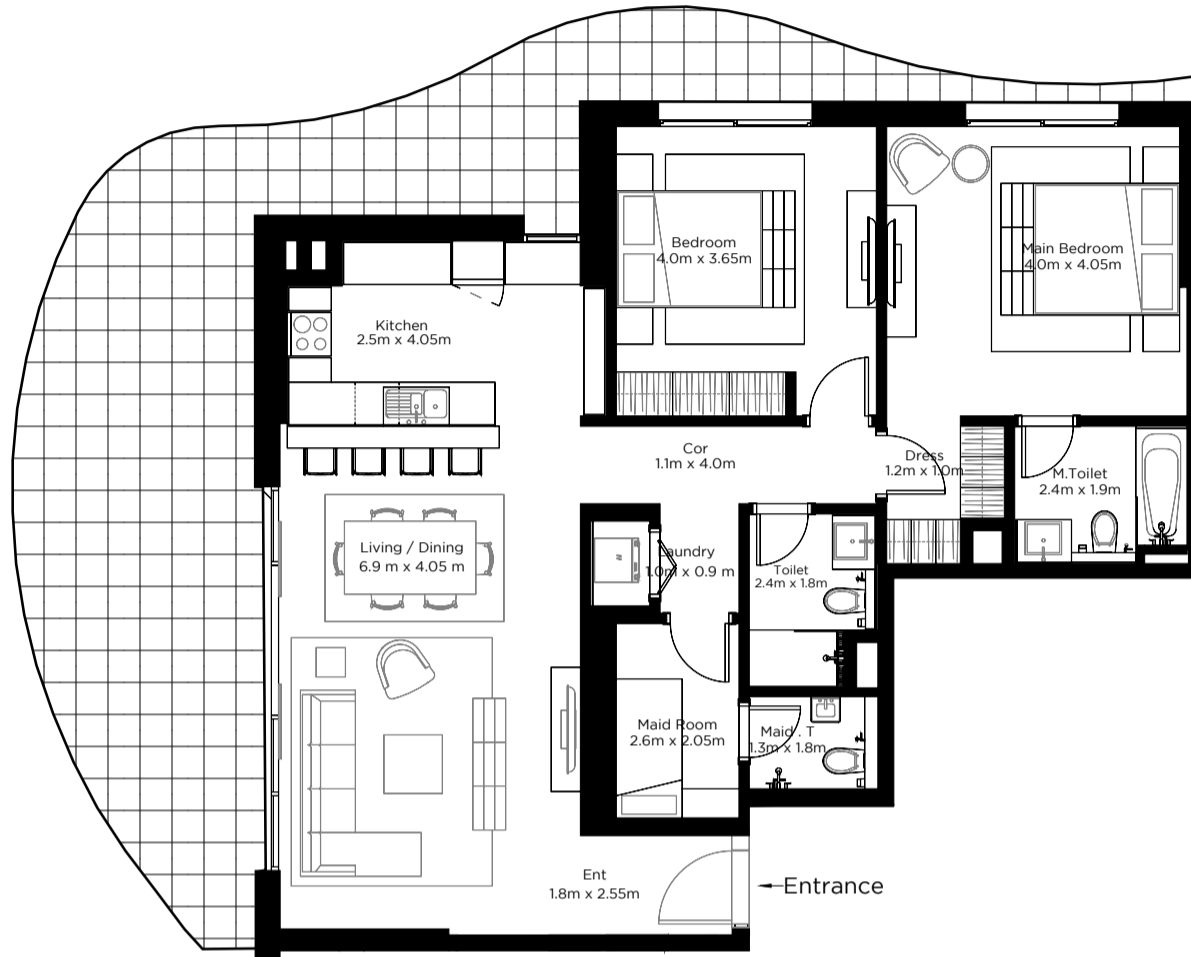
رأس الخيمة العقارية  
RAK PROPERTIES

# 2

## BEDROOM APARTMENT

### TYPE 2

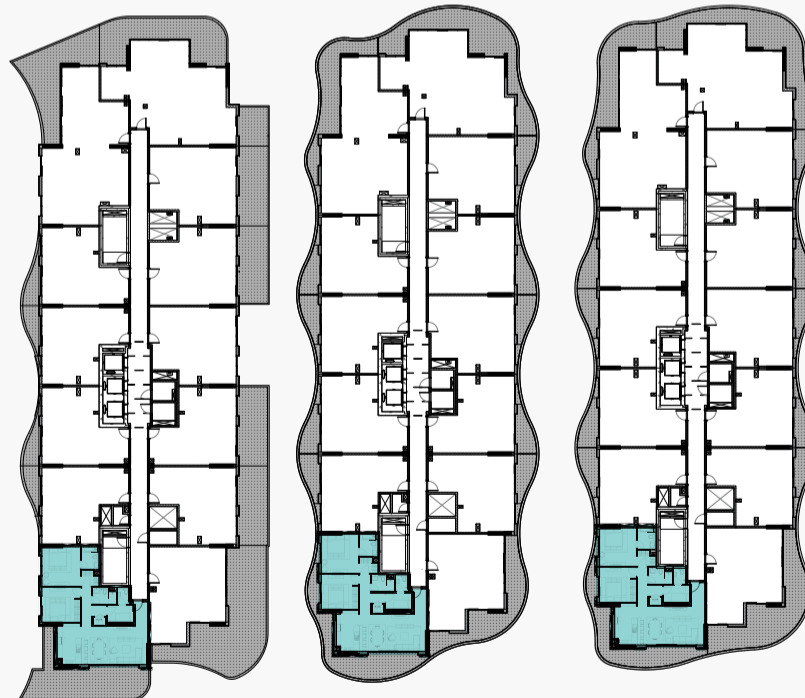
	Sq.f	Sq.mt
<b>Unit Area</b>	1227.096	114
<b>Balcony Area</b>	387.504	36
<b>Total Area</b>	1614.6	150



Level 1

Level 2,4,6,8,10,12,14

Level 3,5,7,9,11,13



Units | 110, 211, 311, 411, 511, 611, 711, 811, 911, 1011, 1111, 1211, 1309, 1409

Floor plan numbers, square footage, and floor plans are approximate. Final dimensions, square footage and floor plans may vary or may be mirrored. Balcony areas for each type differ.



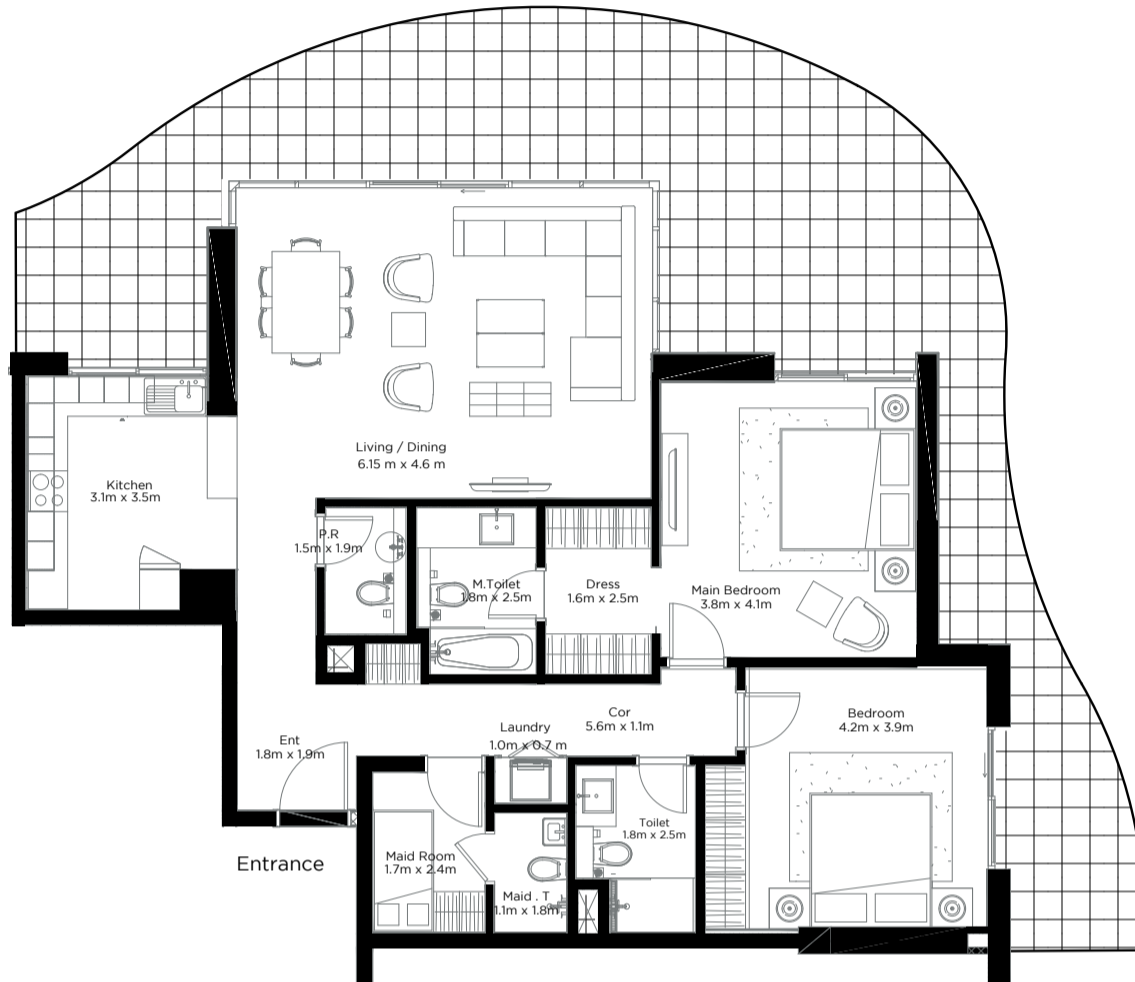
رأس الخيمة العقارية  
RAK PROPERTIES

# 2

## BEDROOM APARTMENT

### TYPE 5

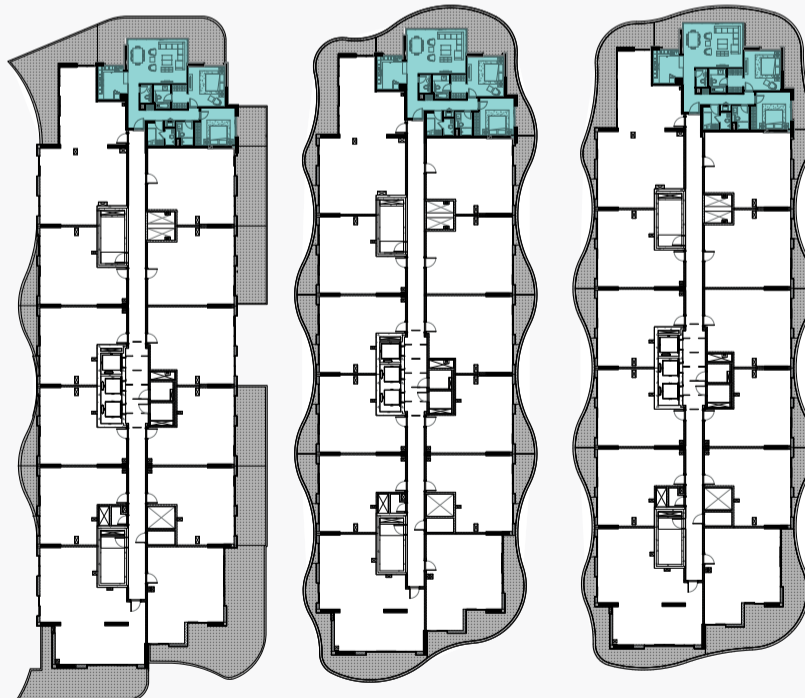
	Sq.f	Sq.mt
Unit Area	1270.152	118
Balcony Area	592.02	55
<b>Total Area</b>	<b>1862.172</b>	<b>173</b>



Level 1

Level 2,4,6,8,10,12

Level 3,5,7,9,11



Units | 104, 204, 304, 404, 504, 604, 704, 804, 904, 1004, 1104, 1204

Floor plan numbers, square footage, and floor plans are approximate. Final dimensions, square footage and floor plans may vary or may be mirrored. Balcony areas for each type differ.



رأس الخيمة العقارية  
RAK PROPERTIES

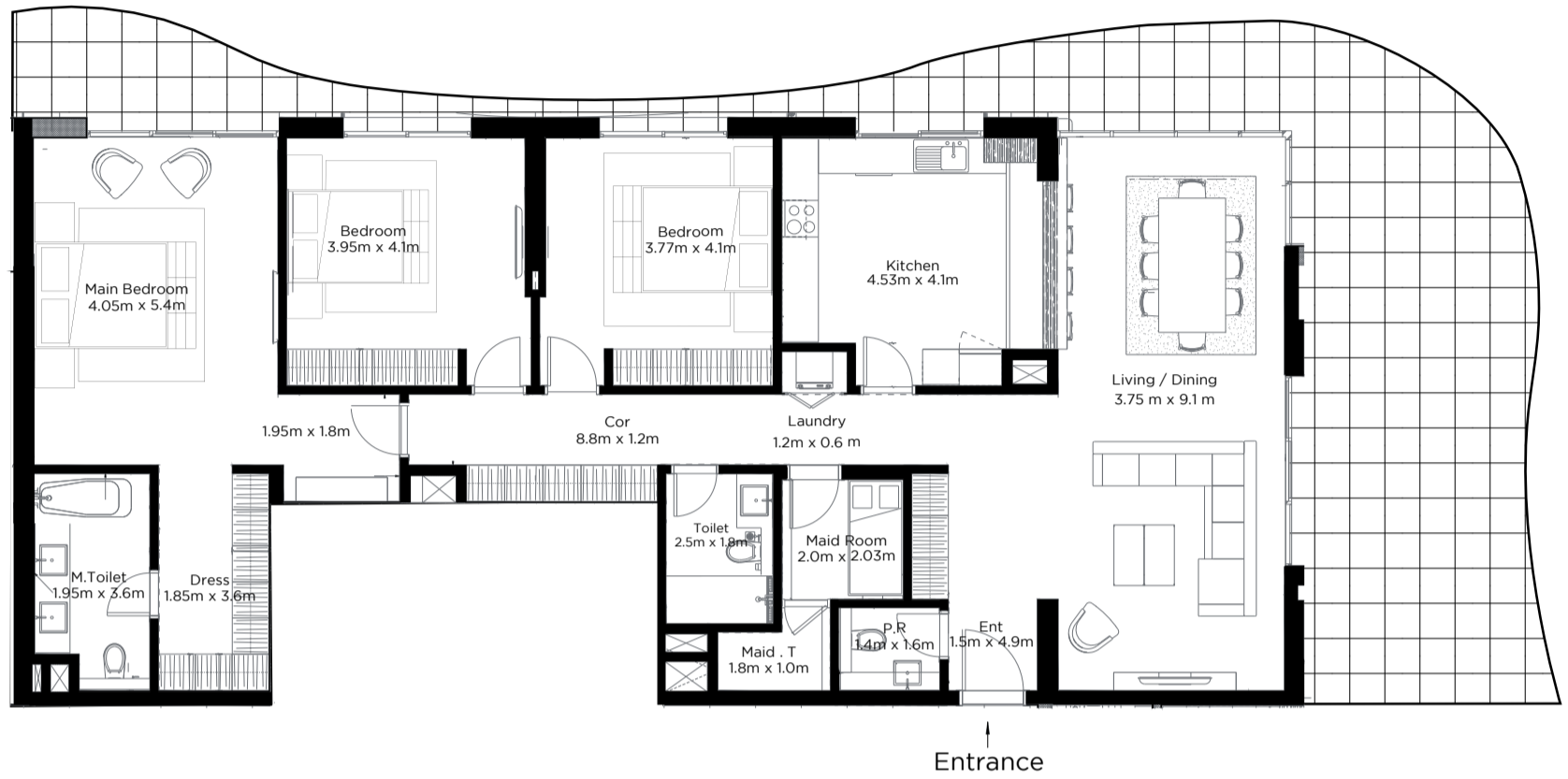
# 3

## BEDROOM APARTMENT

### TYPE 2

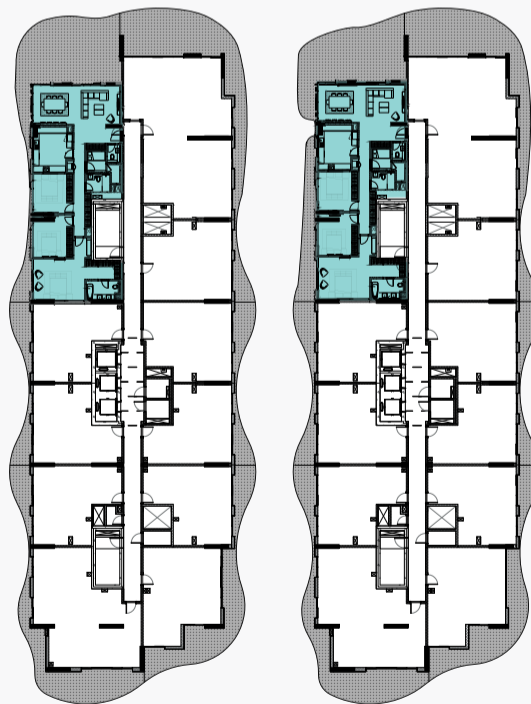
### Tower 2

	Sq.f	Sq.mt
Unit Area	1926.756	179
Balcony Area	925.704	86
<b>Total Area</b>	<b>2852.46</b>	<b>265</b>



Level 13

Level 14



Units | 1302, 1402

Floor plan numbers, square footage, and floor plans are approximate. Final dimensions, square footage and floor plans may vary or may be mirrored. Balcony areas for each type differ.



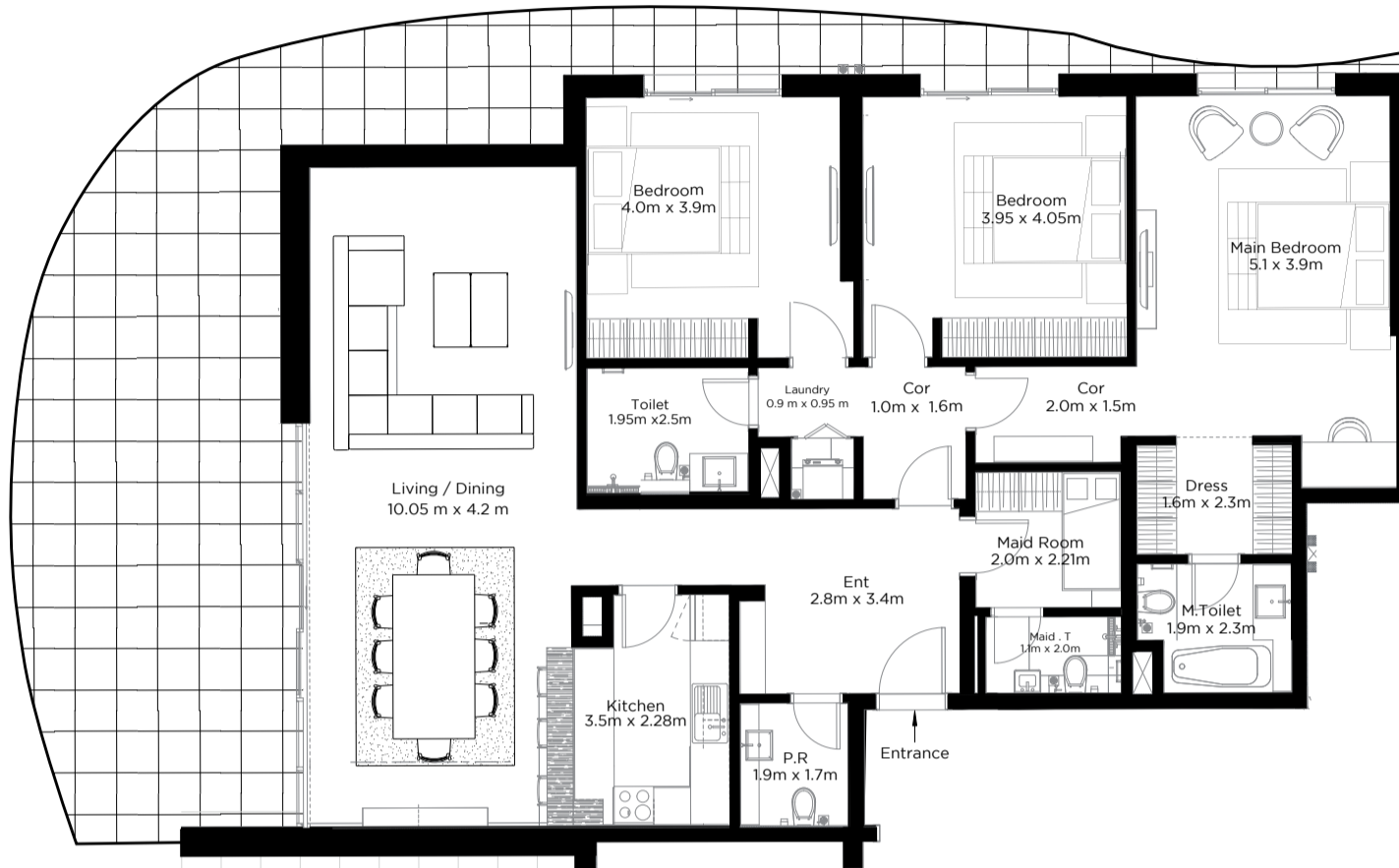
رأس الخيمة العقارية  
RAK PROPERTIES

# 3

## BEDROOM APARTMENT

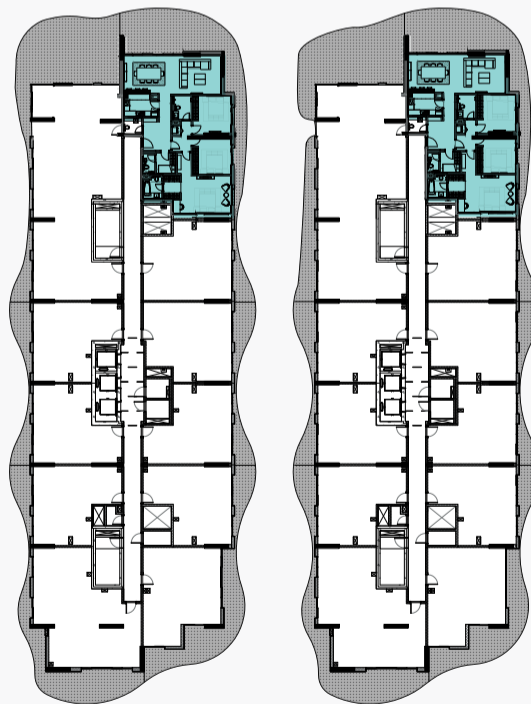
### TYPE 4

	Sq.f	Sq.mt
Unit Area	1819.116	169
Balcony Area	721.188	67
Total Area	2540.304	236



Level 13

Level 14



Units | 1303, 1403

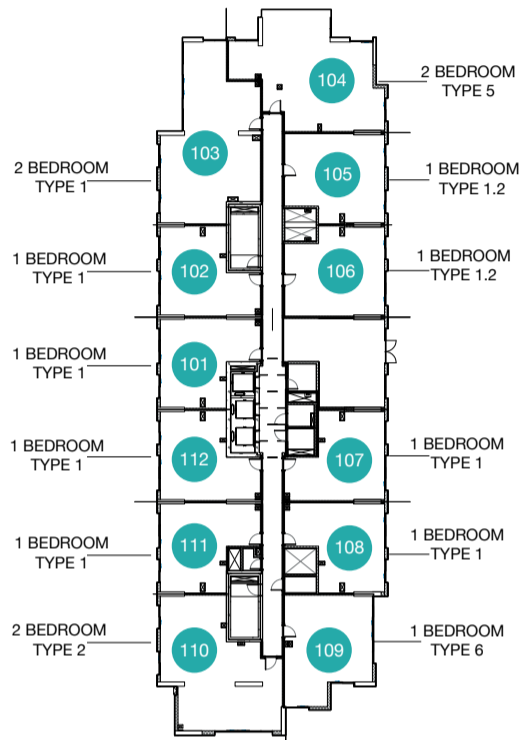
Floor plan numbers, square footage, and floor plans are approximate. Final dimensions, square footage and floor plans may vary or may be mirrored. Balcony areas for each type differ.



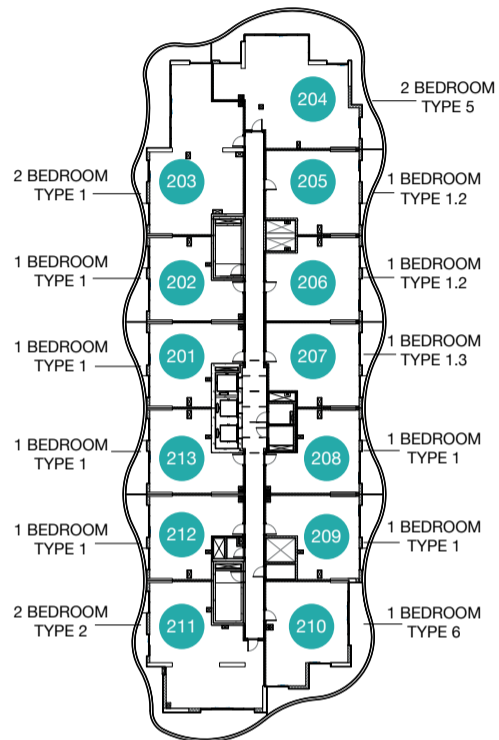
رأس الخيمة العقارية  
RAK PROPERTIES

# Key Plans

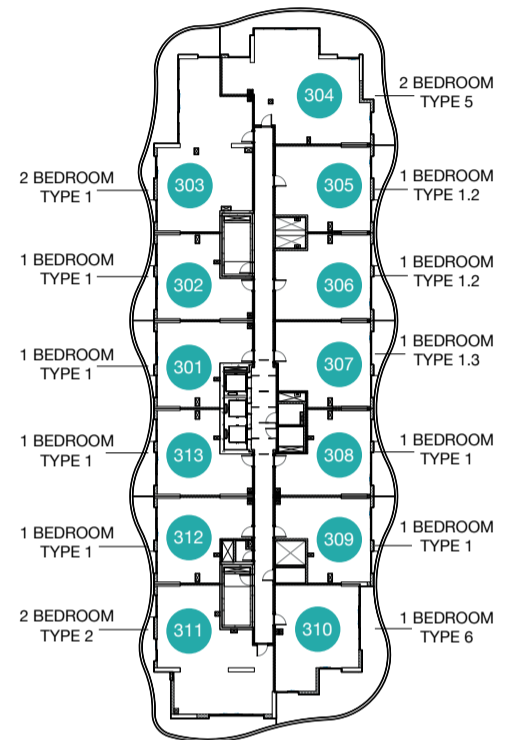
Level 1



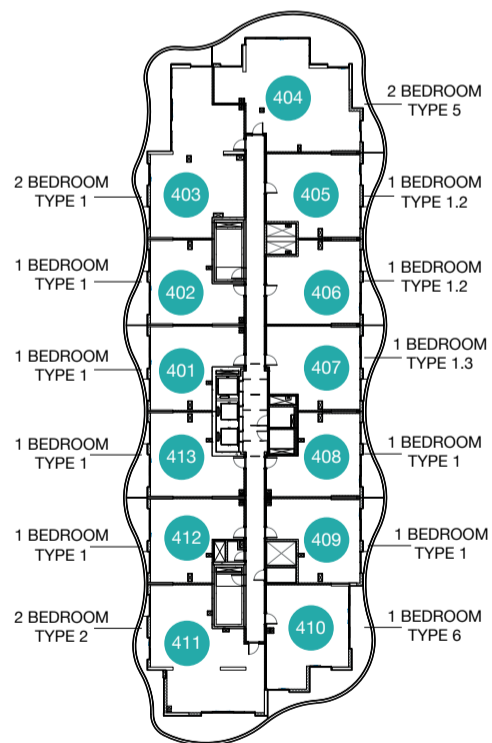
Level 2



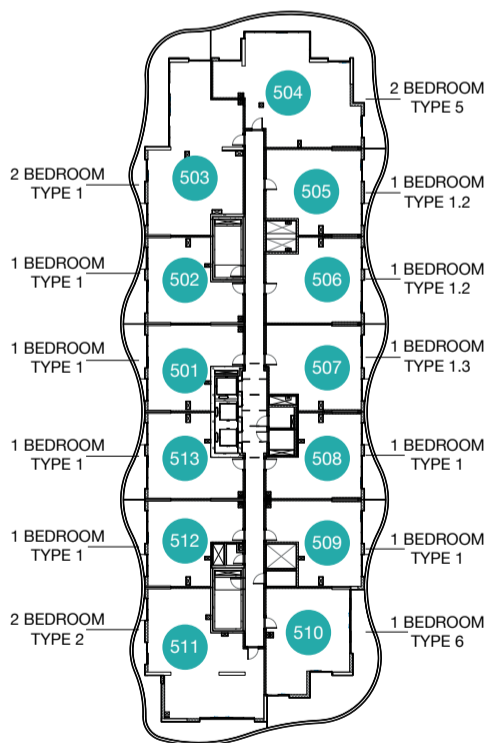
Level 3



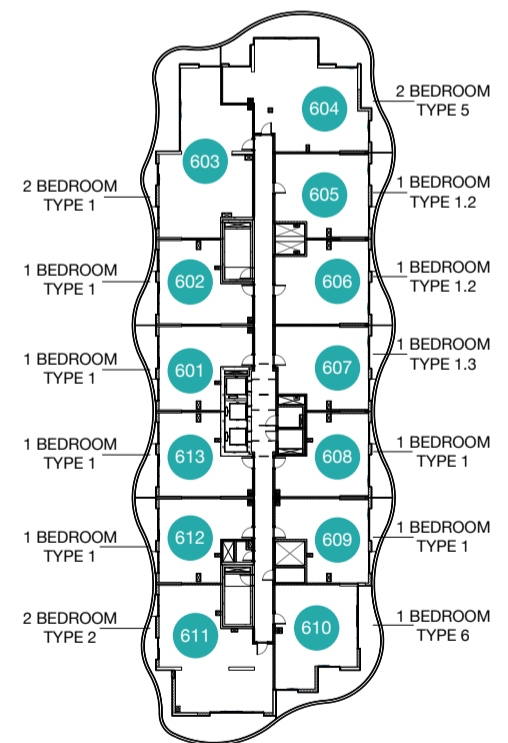
Level 4



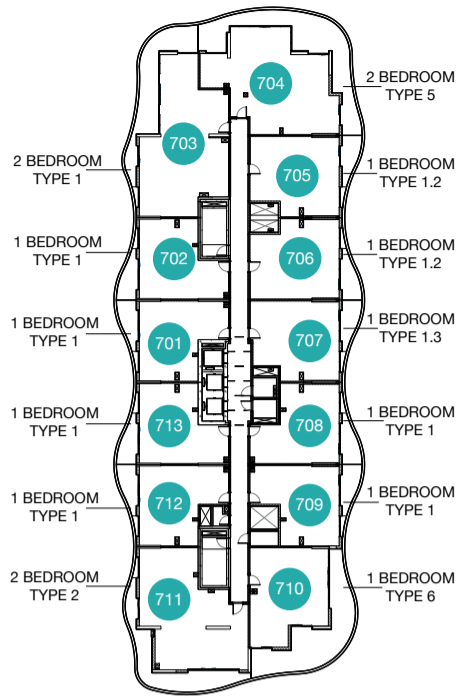
Level 5



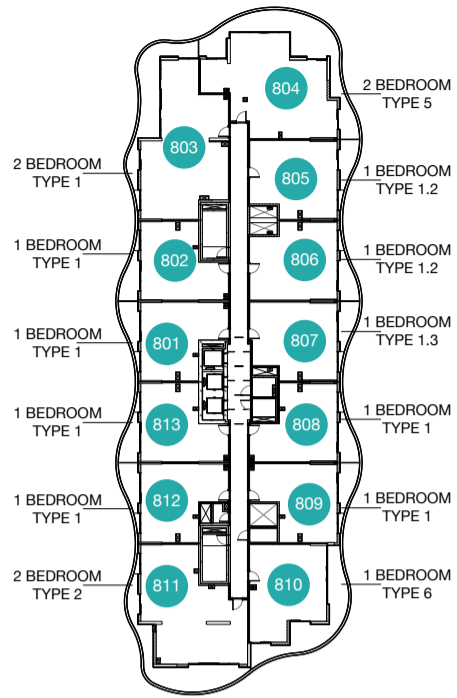
Level 6



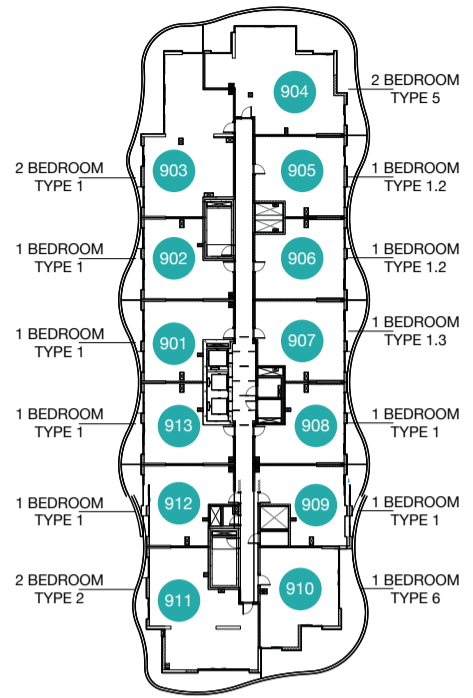
Level 7



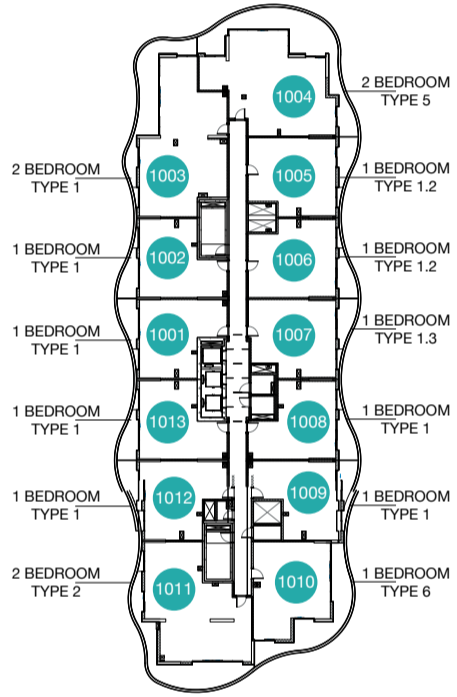
Level 8



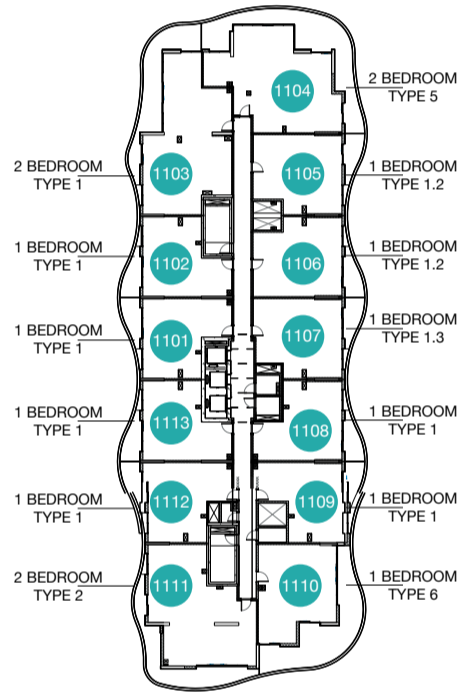
Level 9



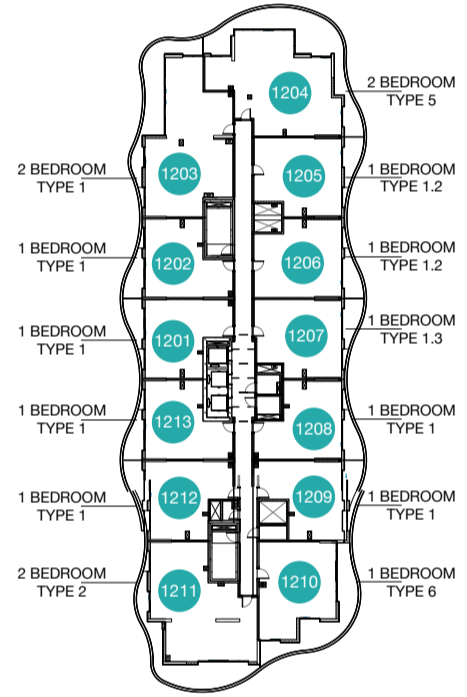
Level 10



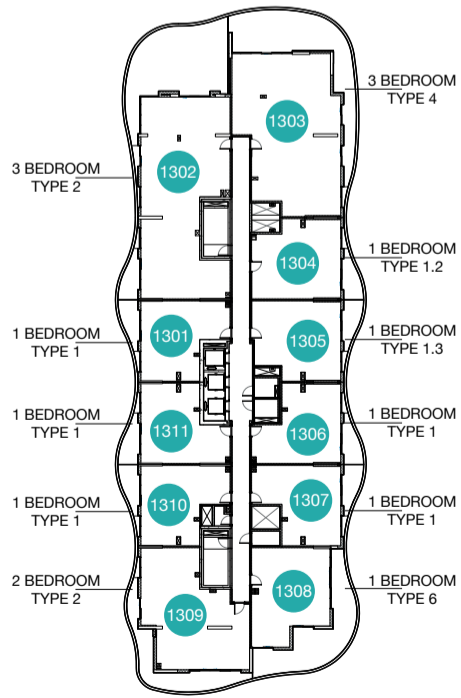
Level 11



Level 12



Level 13



Level 14

