



ROYAL PARK

MODERN LUXURY LIVING

*The Majesty of Living*

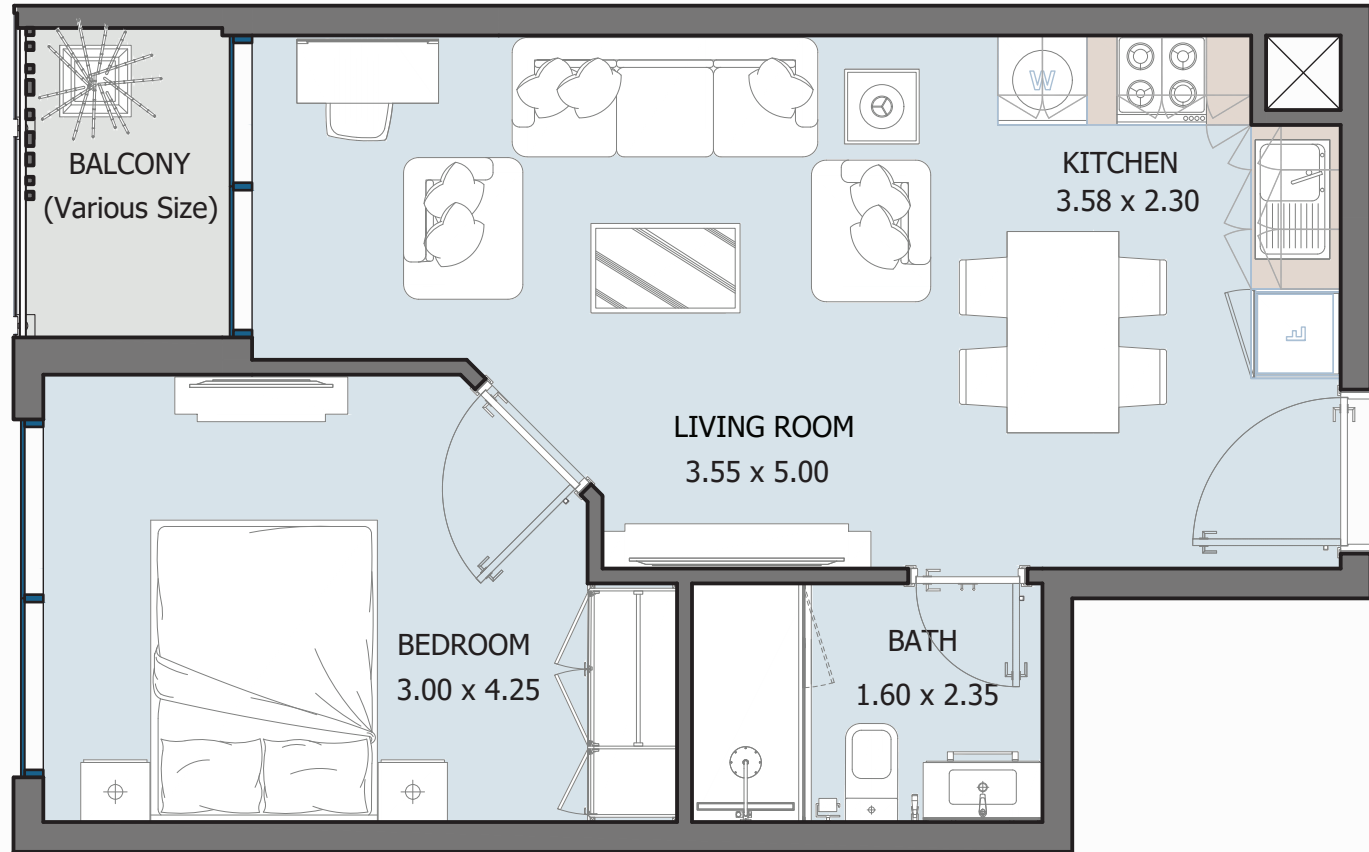


# UNIT TYPES

All drawings and dimensions are approximate. Drawings are not to scale and are subject to change without notice. The developer reserves the right to make revisions. The units are measured at typical floors in the building and columns may vary in size depending on the floor level. The furnishing and accessories shown are for representation only. The availability, length and width of the balcony varies depending on which floor and which orientation the unit is located within the building. There will be slight differences in the internal areas between the same unit types depending on the shaft sizes that go through the units.

# J1B TYPE A

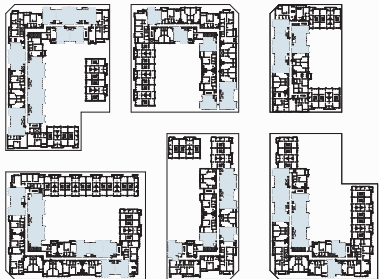
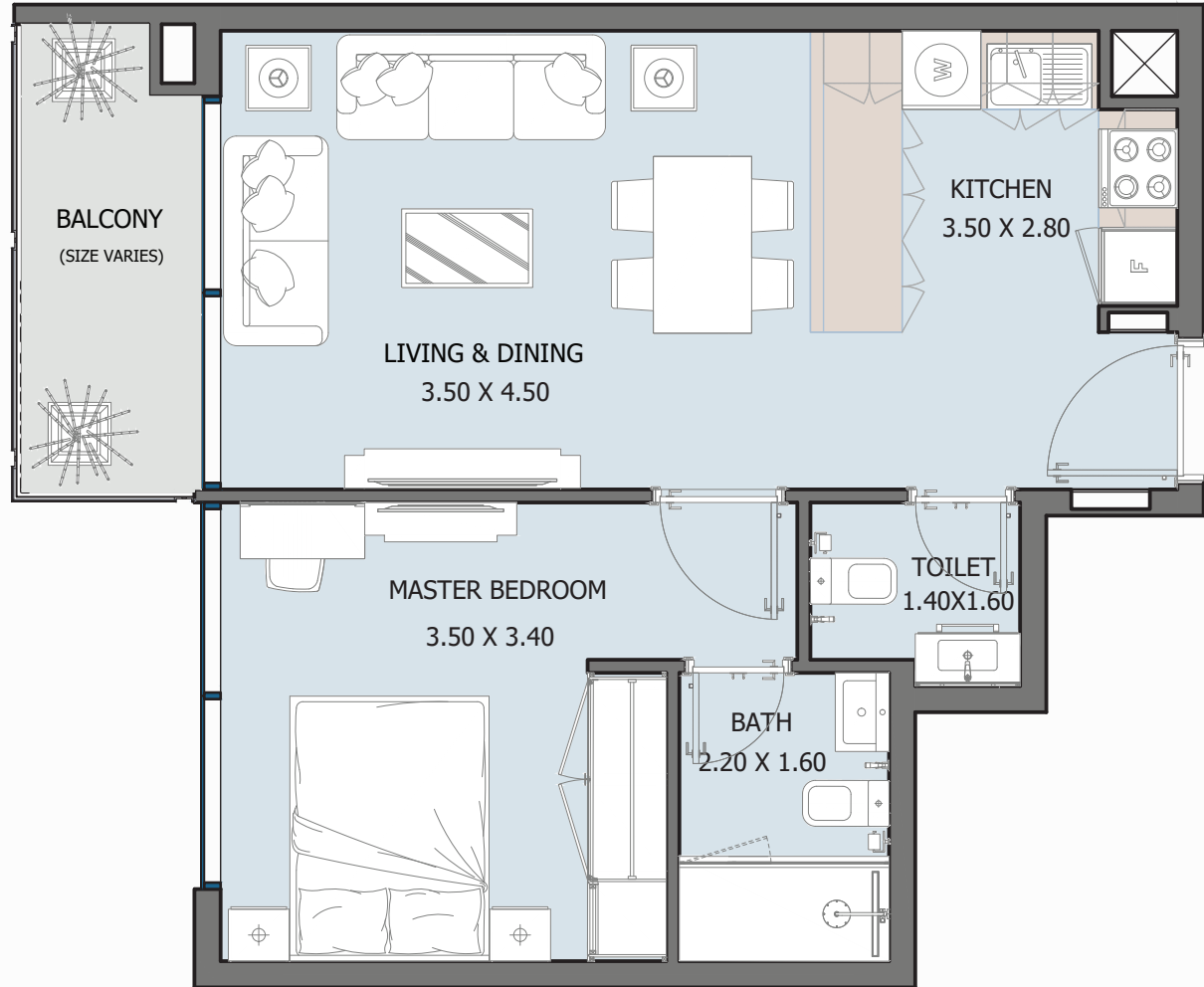
FROM GROUND FLOOR TO 6<sup>TH</sup> FLOOR



Internal Area	449.07 sq.ft
Outdoor Area	33.58 to 187.51 sq.ft
Total Area	482.65 to 636.58 sq.ft

# 1B TYPE A

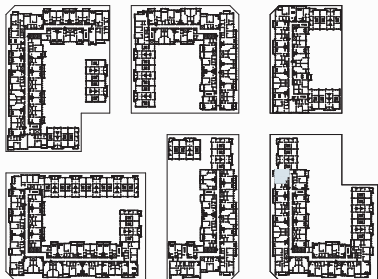
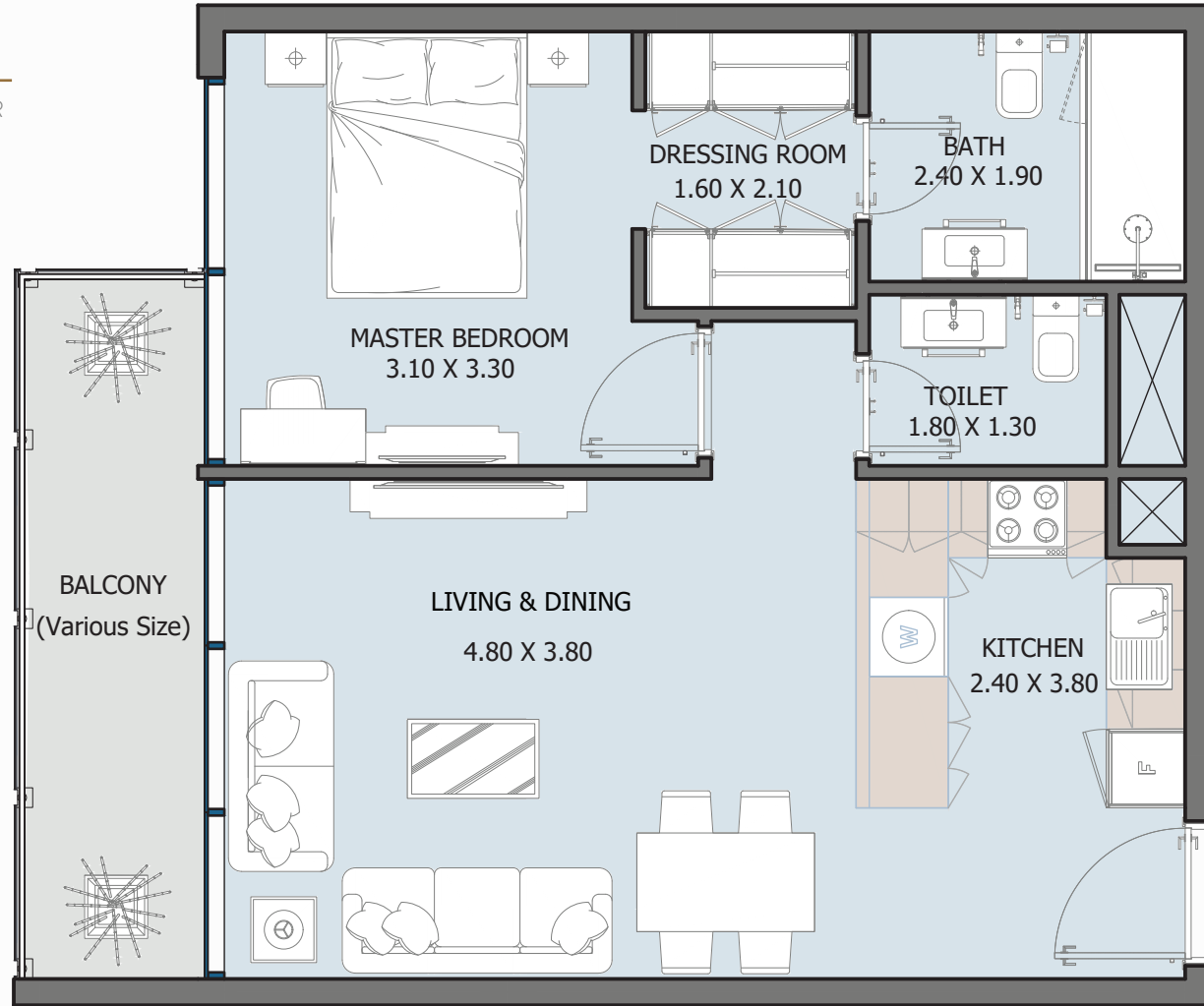
FROM GROUND FLOOR TO 6<sup>TH</sup> FLOOR



Internal Area	515.70 sq.ft
Outdoor Area	51.99 to 429.91 sq.ft
Total Area	567.69 to 945.61 sq.ft

# 1B TYPE B

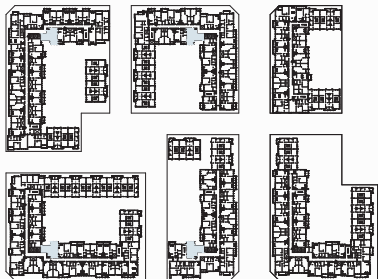
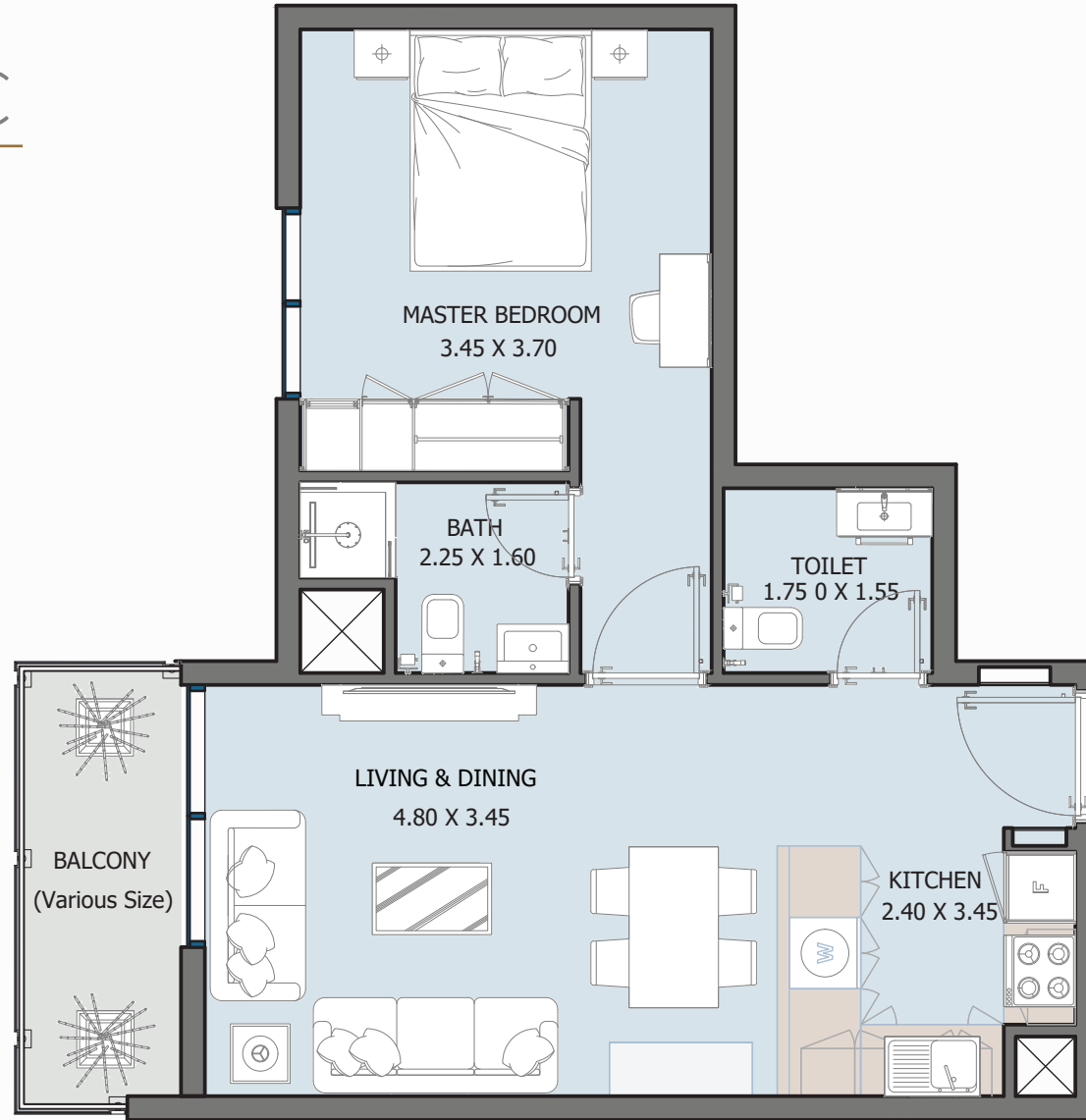
FROM GROUND FLOOR TO 6<sup>TH</sup> FLOOR



Internal Area	583.40 to 610.10 sq.ft
Outdoor Area	88.80 to 127.88 sq.ft
<b>Total Area</b>	<b>672.21 to 737.97 sq.ft</b>

# 1B TYPE C

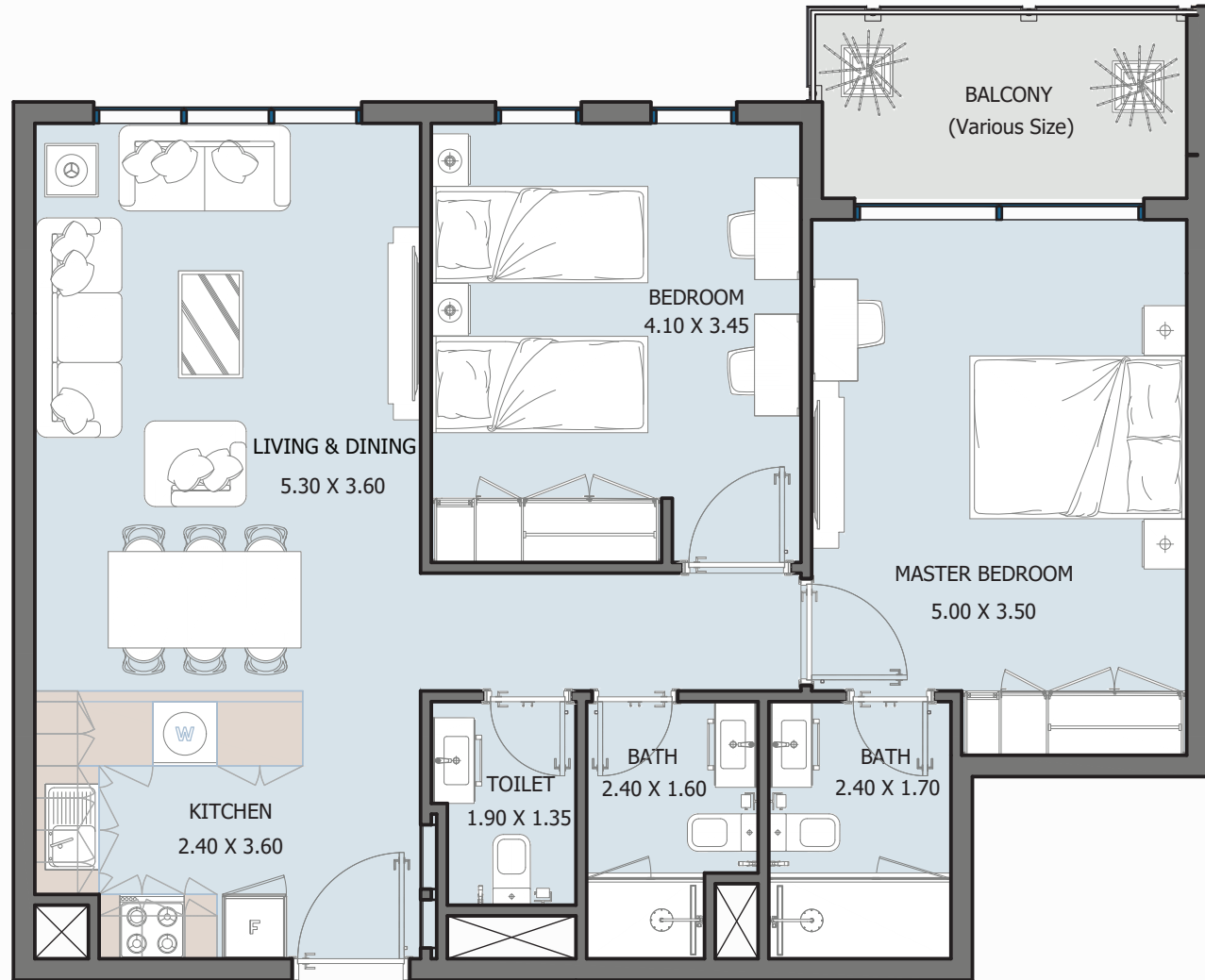
FROM GROUND FLOOR TO 6<sup>TH</sup> FLOOR



Internal Area	529.80 to 540.56 sq.ft
Outdoor Area	51.34 to 410.64 sq.ft
<b>Total Area</b>	<b>584.59 to 942.38 sq.ft</b>

# 2B TYPE A

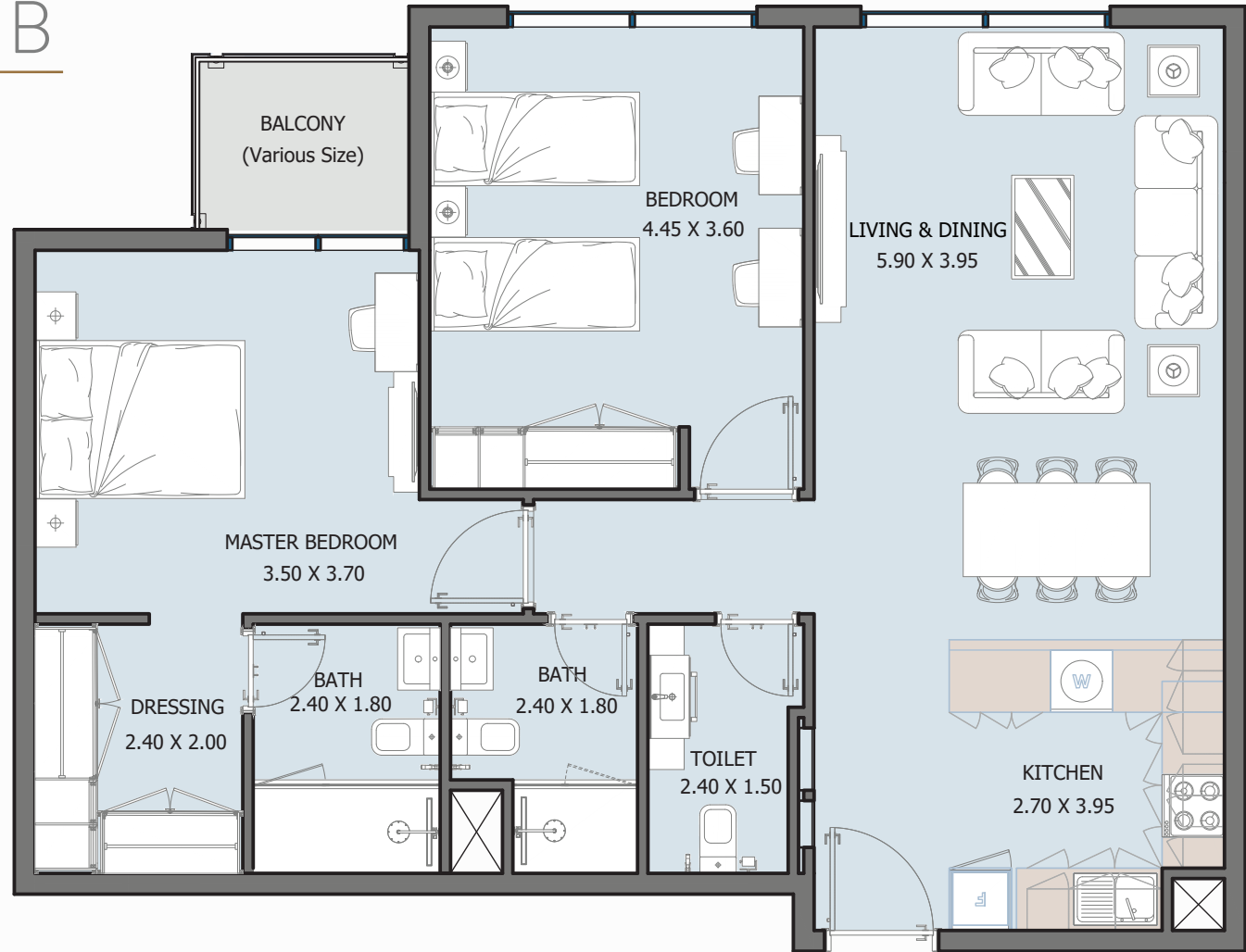
FROM GROUND FLOOR TO 6<sup>TH</sup> FLOOR



Internal Area	846.26 sq.ft
Outdoor Area	45.32 to 423.34 sq.ft
Total Area	891.58 to 1269.6 sq.ft

# 2B TYPE B

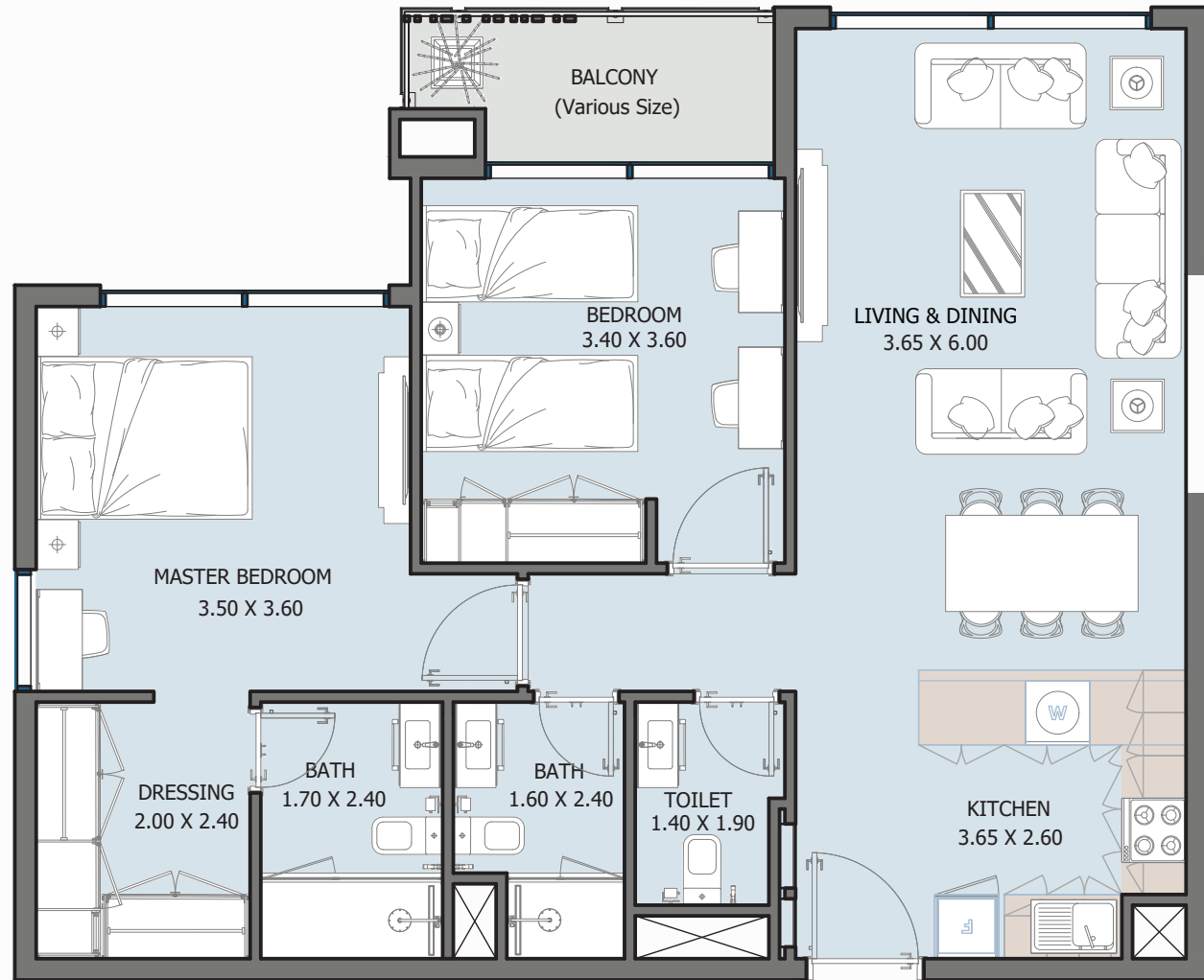
FROM 1<sup>ST</sup> FLOOR TO 6<sup>TH</sup> FLOOR



Internal Area	973.59 sq.ft
Outdoor Area	42.63 sq.ft
<b>Total Area</b>	<b>1016.22 sq.ft</b>

# 2B TYPE C

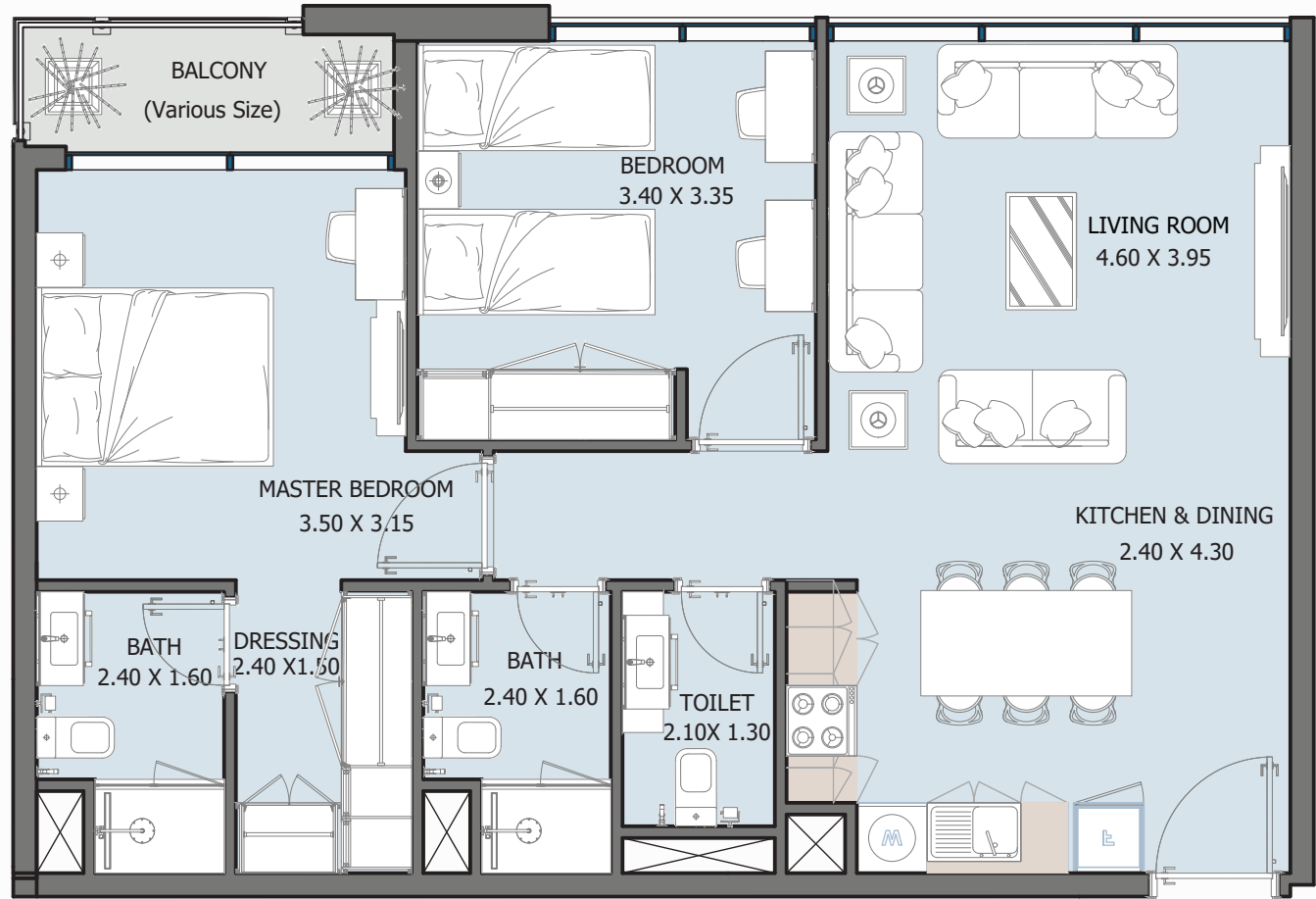
FROM 2<sup>ND</sup> FLOOR TO 6<sup>TH</sup> FLOOR



Internal Area	878.33 sq.ft
Outdoor Area	54.14 sq.ft
<b>Total Area</b>	<b>932.48 sq.ft</b>

# 2B TYPE D

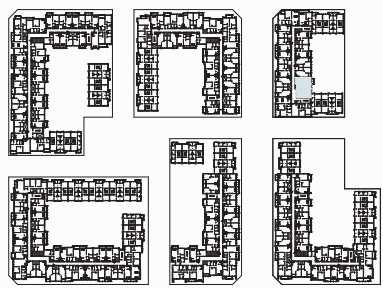
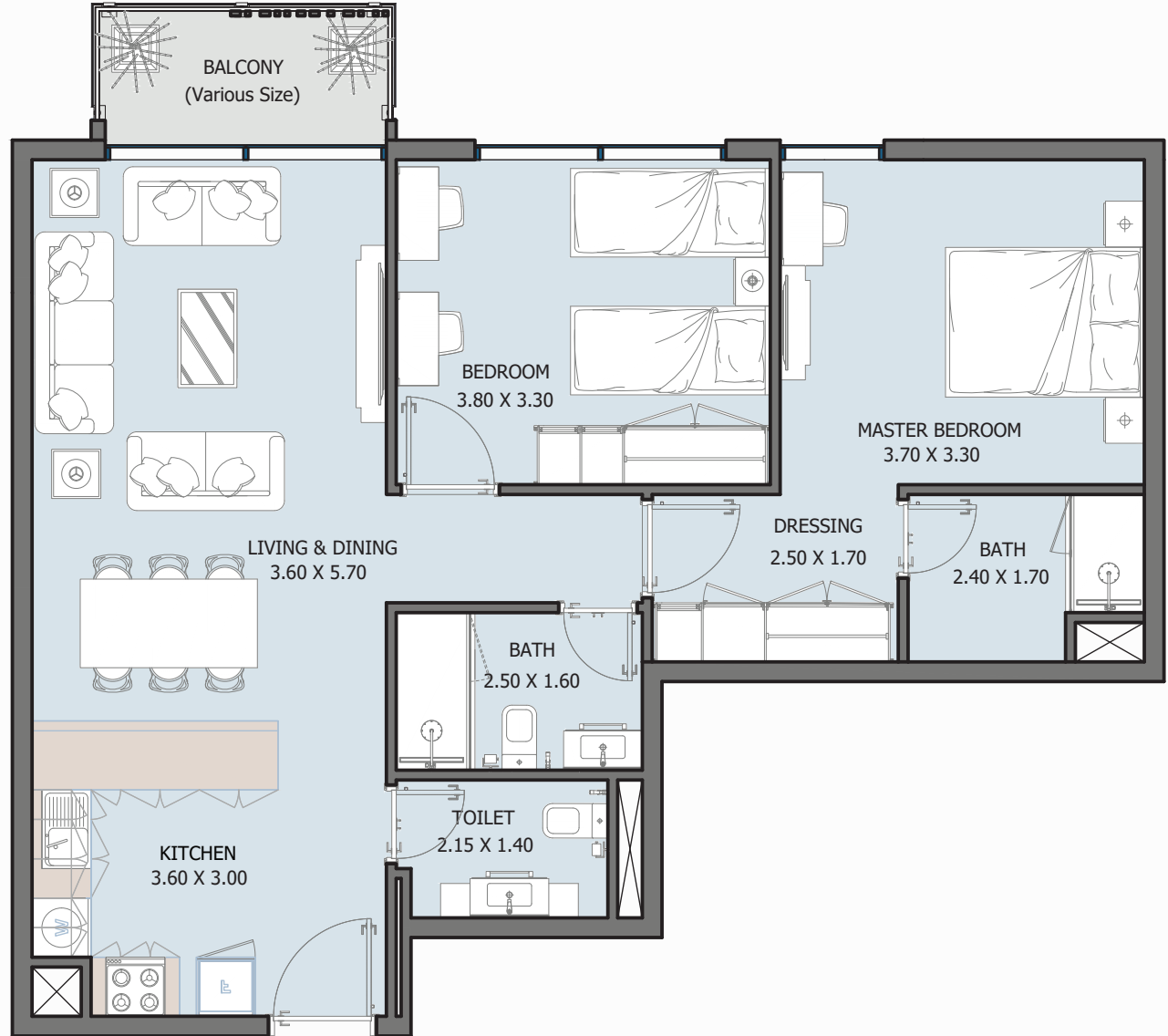
FROM GROUND FLOOR TO 6<sup>TH</sup> FLOOR



Internal Area	797.39 to 853.79 sq.ft
Outdoor Area	42.41 to 537.12 sq.ft
Total Area	839.8 to 1390.91 sq.ft

# 2B TYPE E

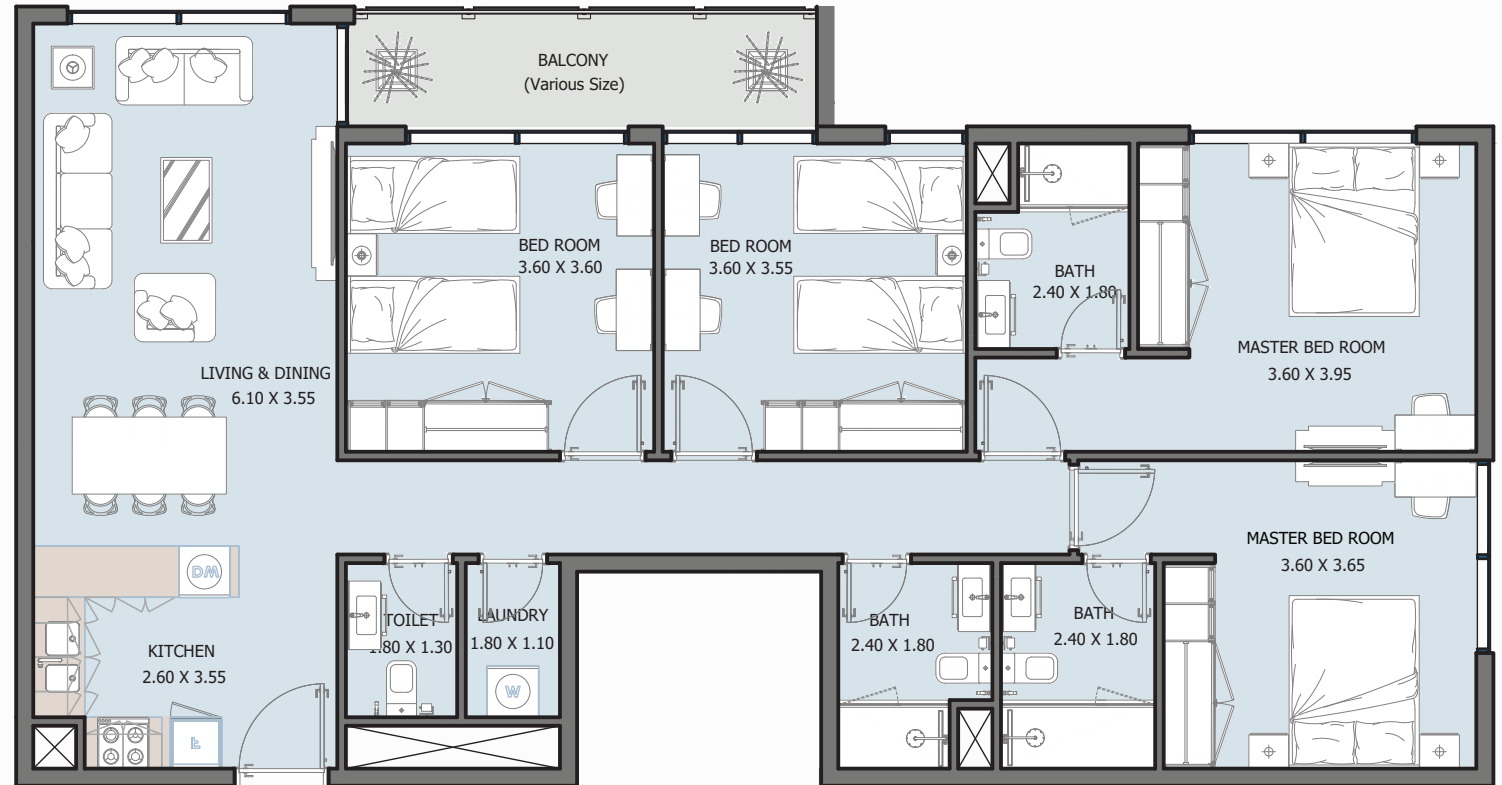
FROM GROUND FLOOR TO 6<sup>TH</sup> FLOOR



Internal Area	859.71 sq.ft
Outdoor Area	50.05 to 223.14 sq.ft
<b>Total Area</b>	<b>909.76 to 1082.85 sq.ft</b>

# 4B TYPE A

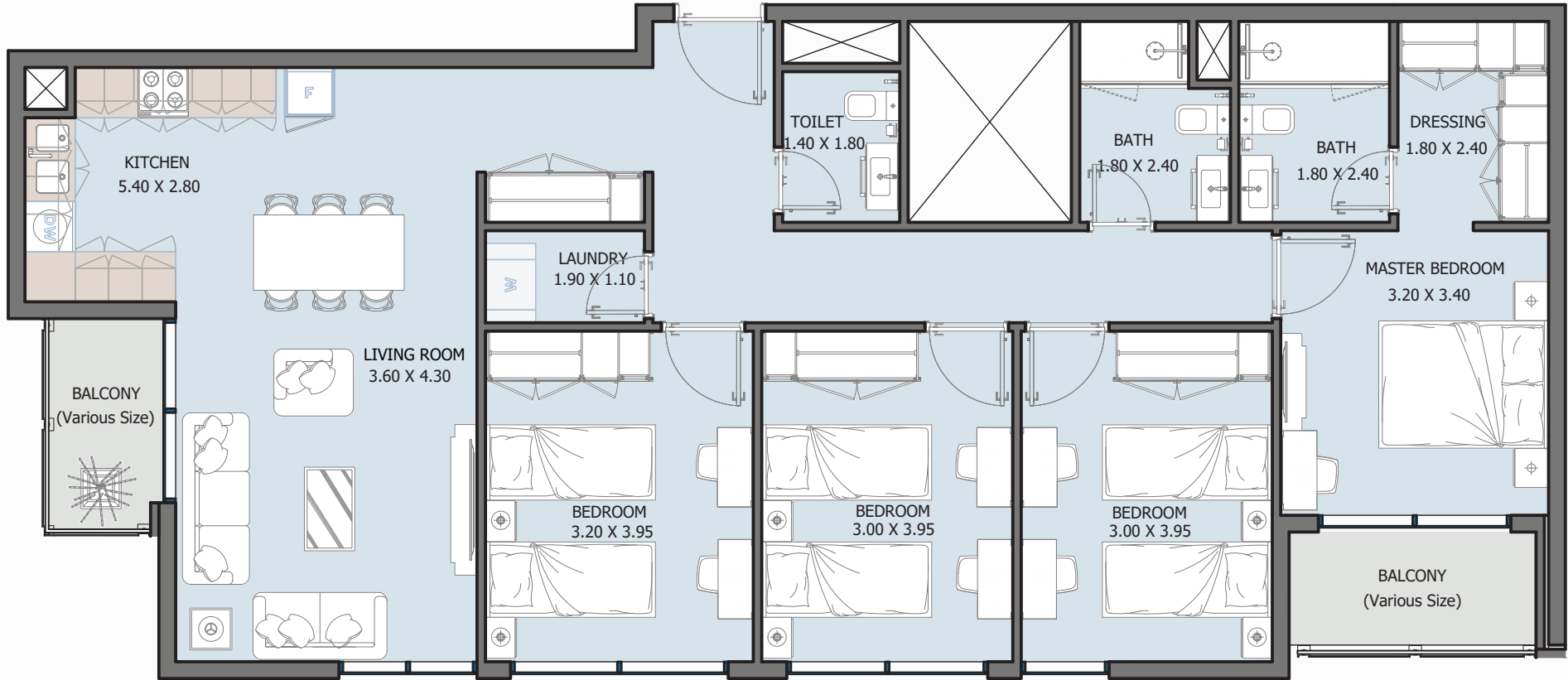
FROM GROUND FLOOR TO 6<sup>TH</sup> FLOOR



Internal Area	1318.69 sq.ft
Outdoor Area	90.42 to 883.61 sq.ft
<b>Total Area</b>	<b>1409.11 to 2202.3 sq.ft</b>

# 4B TYPE B

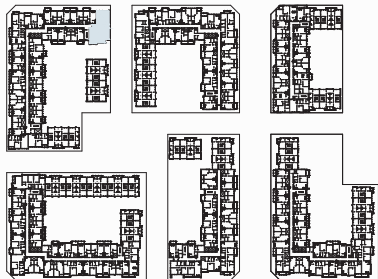
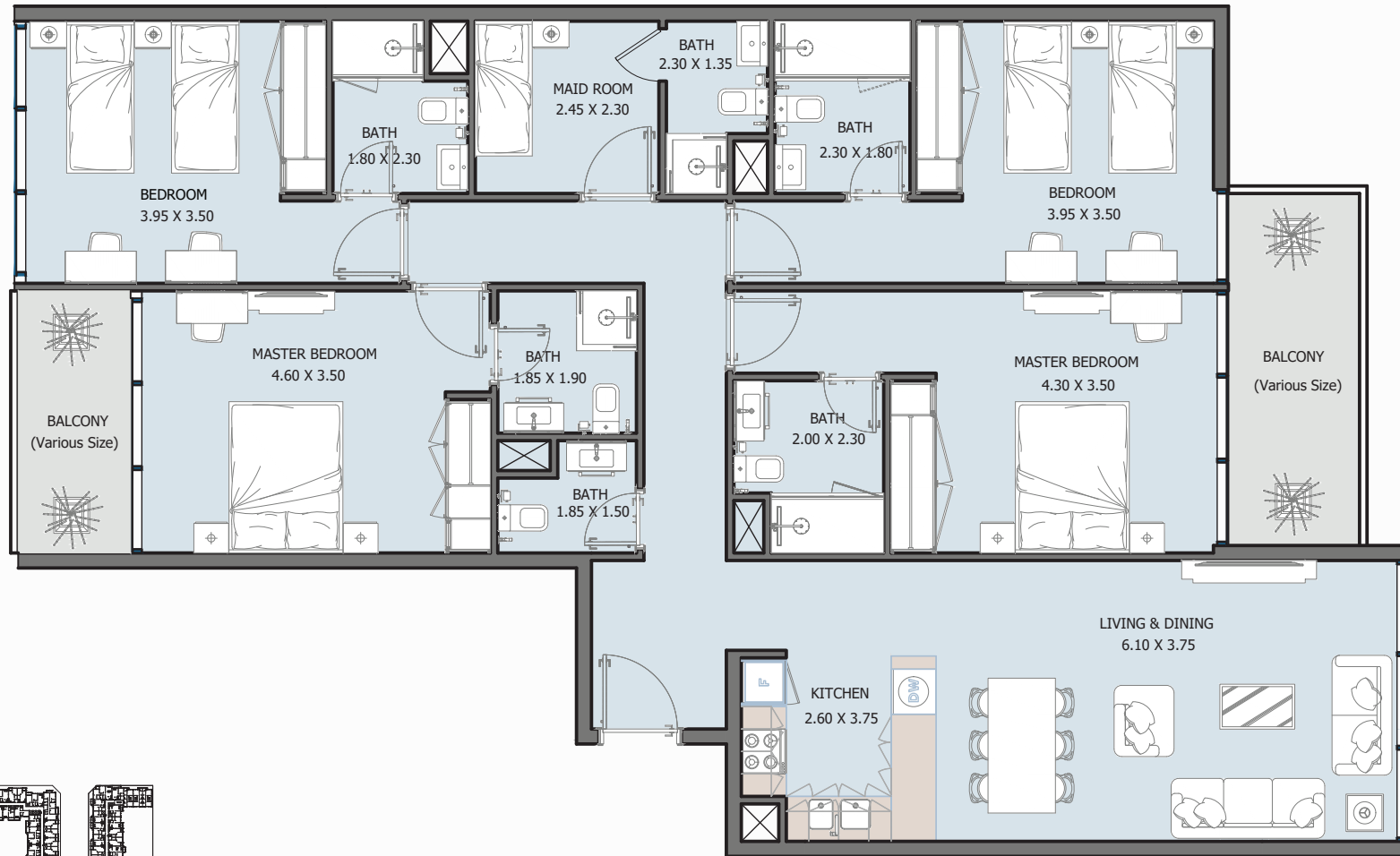
FROM GROUND FLOOR TO 6<sup>TH</sup> FLOOR



Internal Area	1288.98 to 1318.58 sq.ft
Outdoor Area	92.03 to 864.23 sq.ft
Total Area	1381.01 to 2153.21 sq.ft

# 4B TYPE C

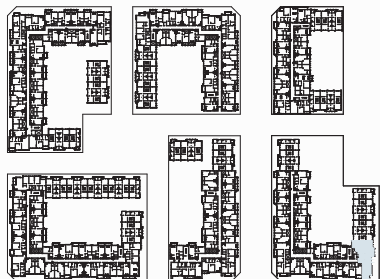
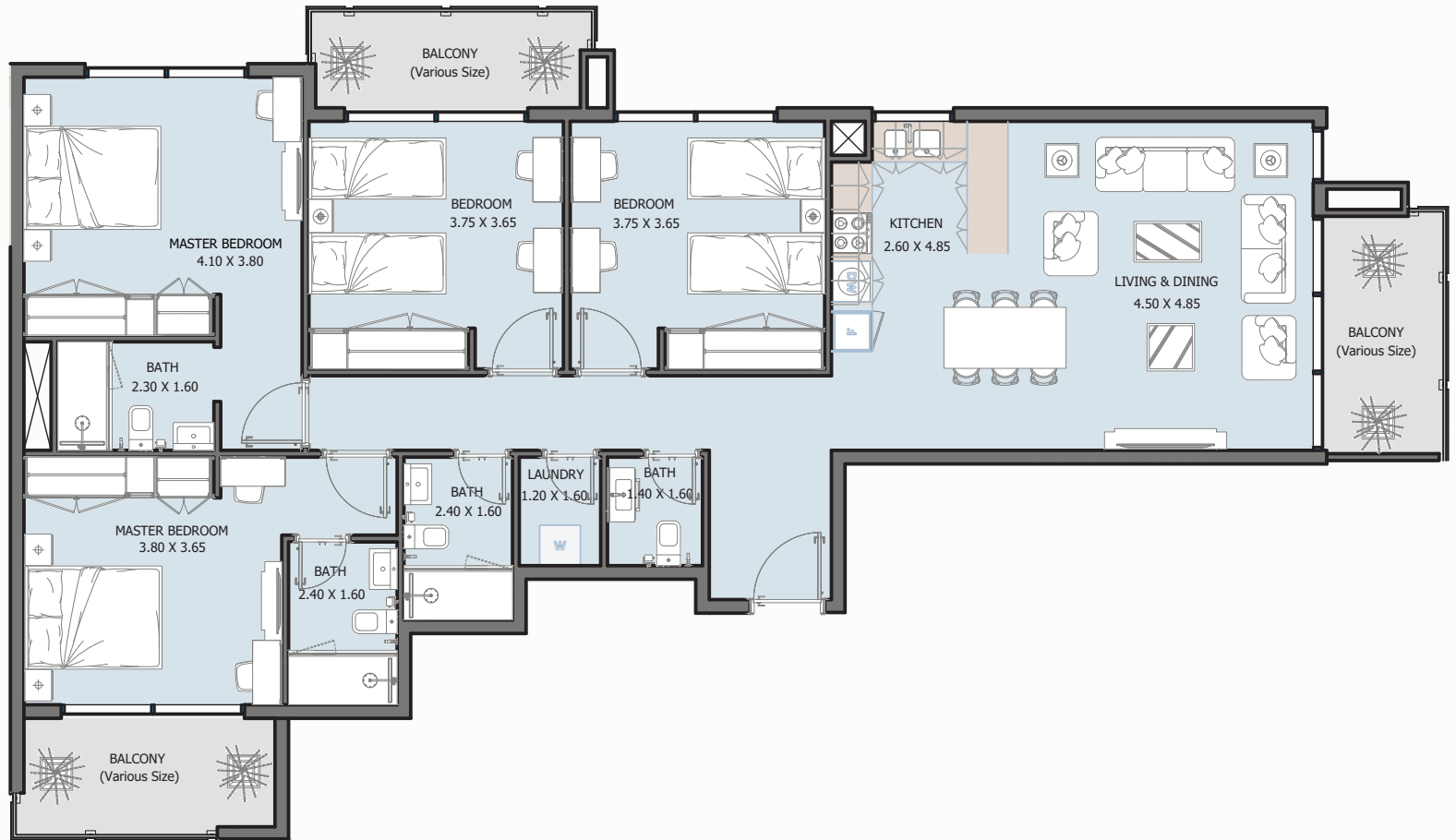
FROM 2<sup>ND</sup> FLOOR TO 6<sup>TH</sup> FLOOR



Internal Area	1596.82 sq.ft
Outdoor Area	162.00 sq.ft
<b>Total Area</b>	<b>1758.82 sq.ft</b>

# 4B TYPE D

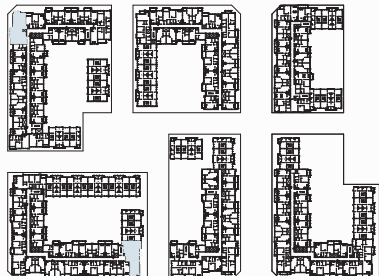
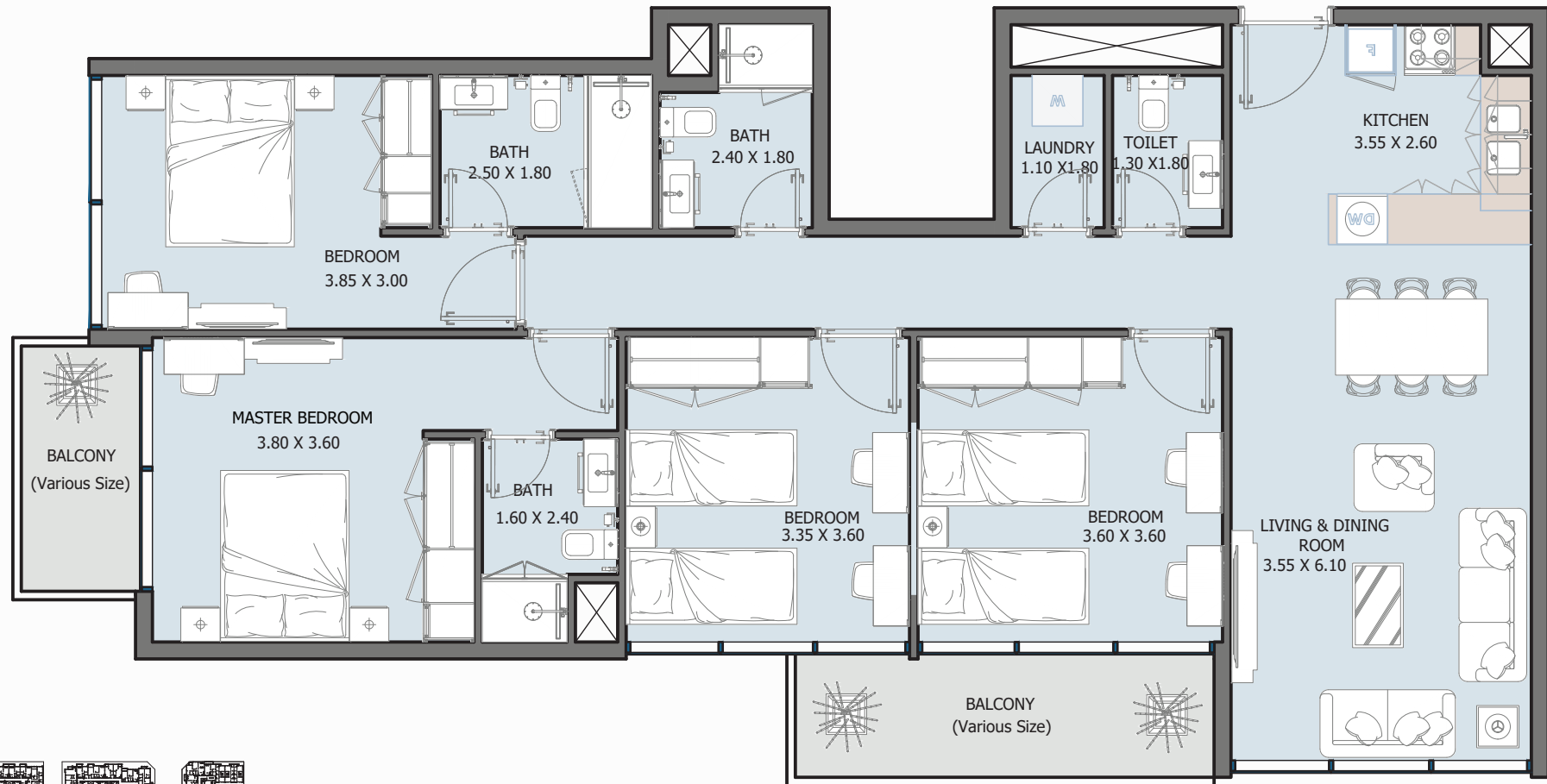
FROM 1<sup>ST</sup> FLOOR TO 6<sup>TH</sup> FLOOR



Internal Area	1432.14 sq.ft
Outdoor Area	230.02 sq.ft
<b>Total Area</b>	<b>1662.16 sq.ft</b>

# 4B TYPE E

FROM GROUND FLOOR TO 6<sup>TH</sup> FLOOR

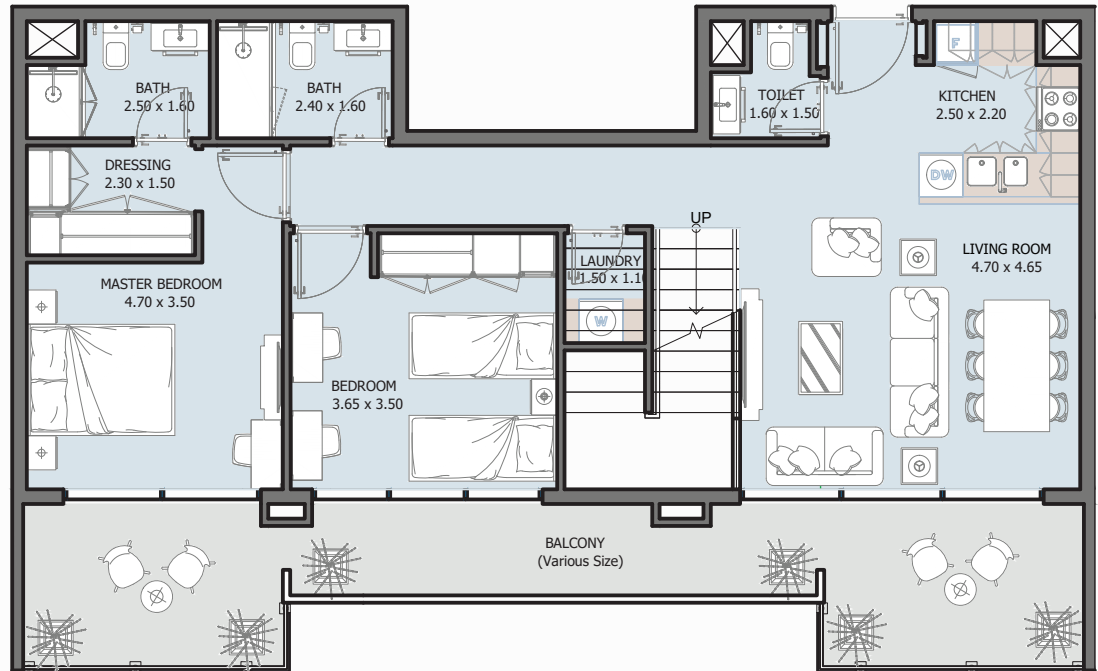
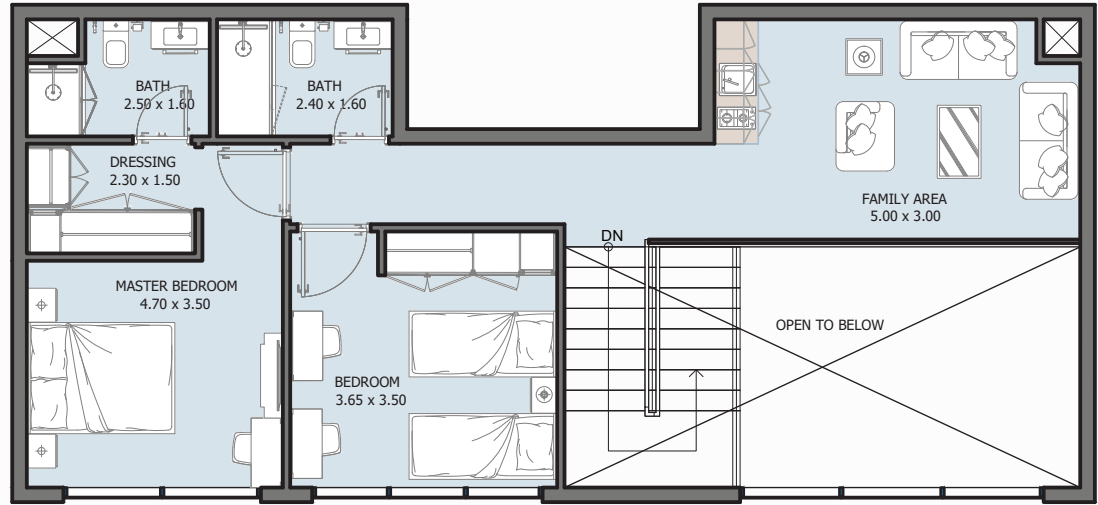


Internal Area	1275.95 to 1401.89 sq.ft
Outdoor Area	51.24 to 869.62 sq.ft
<b>Total Area</b>	<b>1406.73 to 2151.17 sq.ft</b>

# 4B PENTHOUSE

## TYPE A

FROM 7<sup>TH</sup> FLOOR TO 8<sup>TH</sup> FLOOR

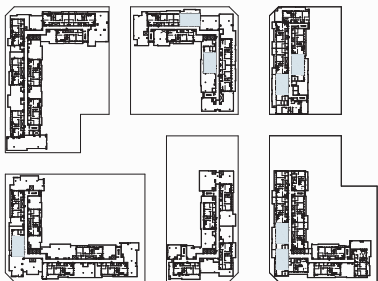
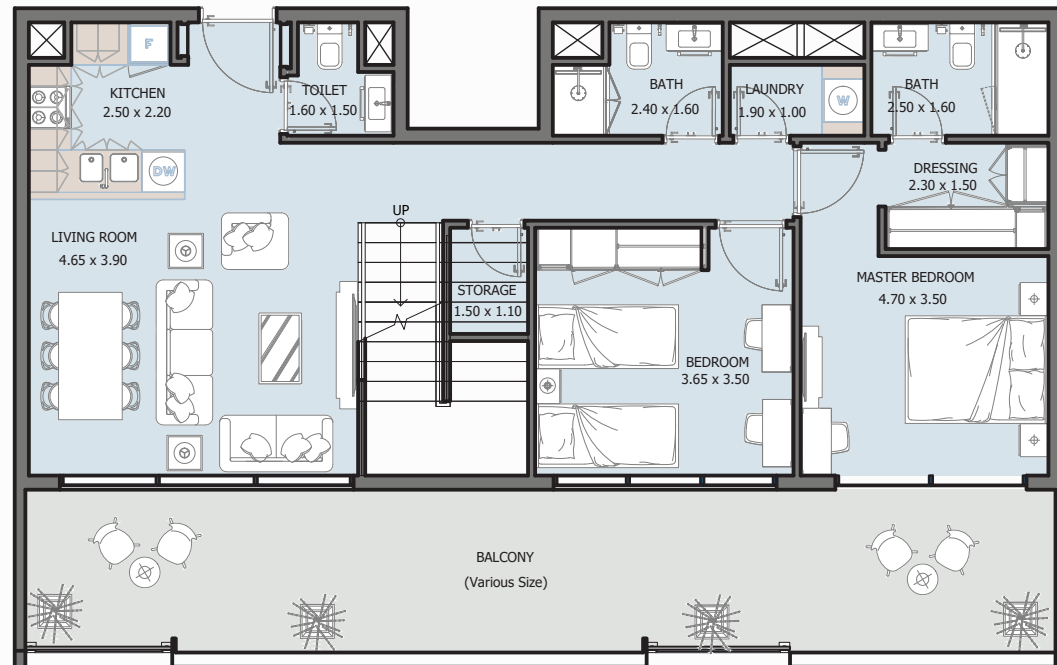
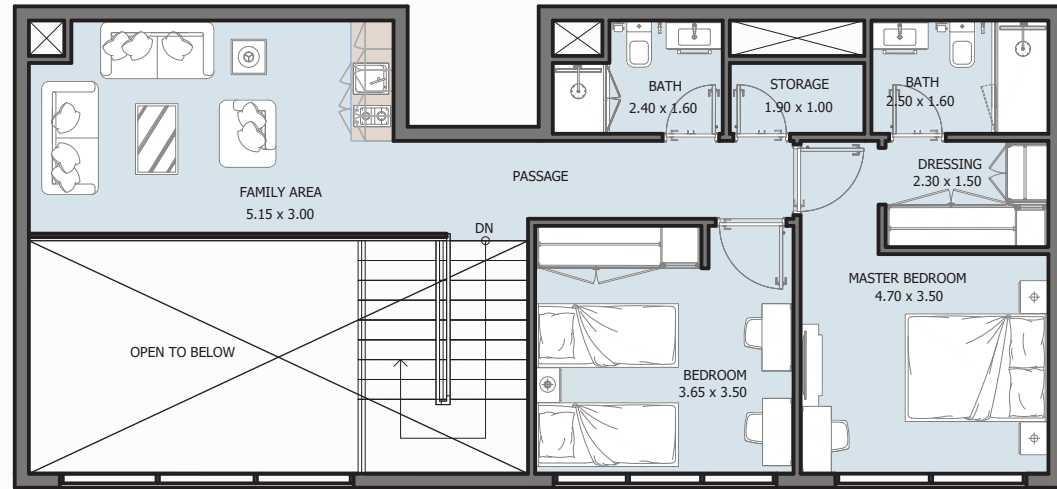


Internal Area	1733 sq.ft
Outdoor Area	220.88 to 2200.26 sq.ft
<b>Total Area</b>	<b>1953.88 to 3933.26 sq.ft</b>

# 4B PENTHOUSE

## TYPE B

FROM 7<sup>TH</sup> FLOOR TO 8<sup>TH</sup> FLOOR

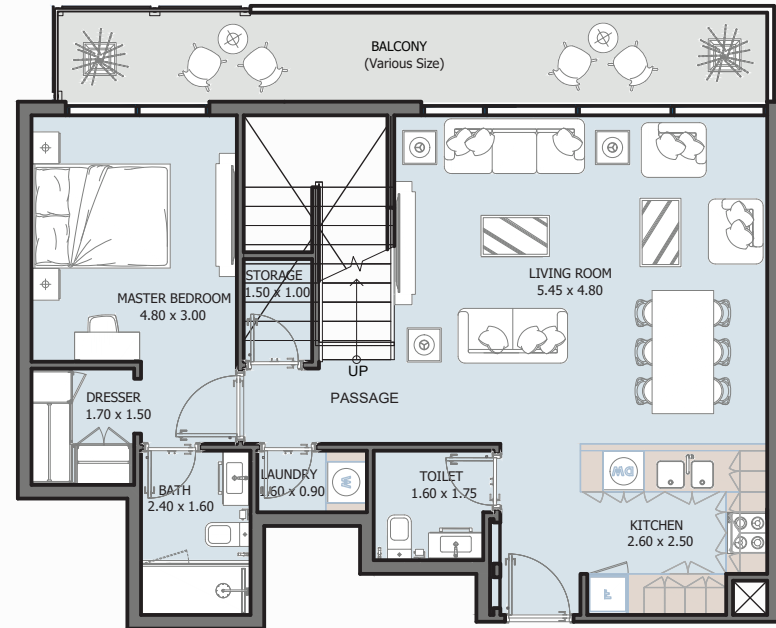
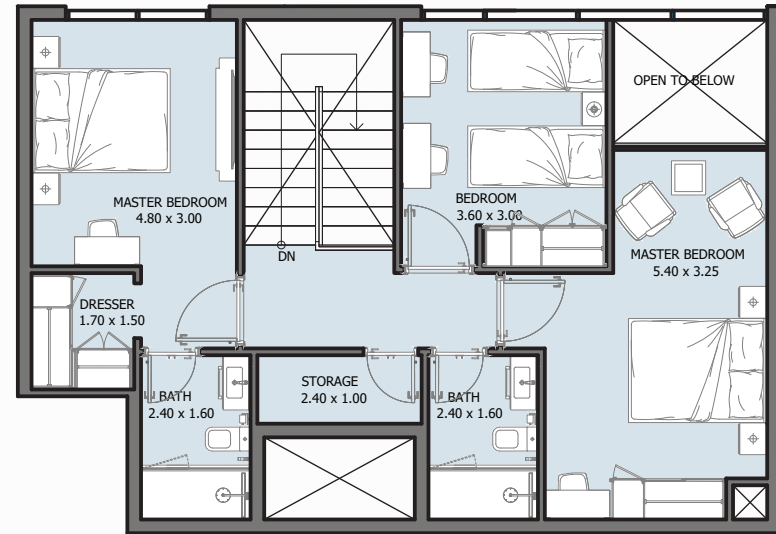
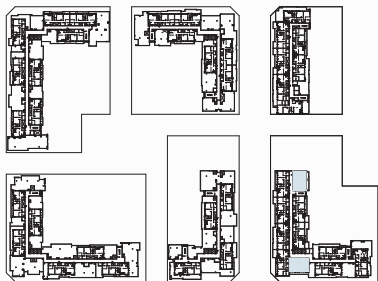


Internal Area	1783.26 sq.ft
Outdoor Area	239.60 to 2261.39 sq.ft
Total Area	2022.86 to 4044.65 sq.ft

# 4B PENTHOUSE

## TYPE C

FROM 7<sup>TH</sup> FLOOR TO 8<sup>TH</sup> FLOOR

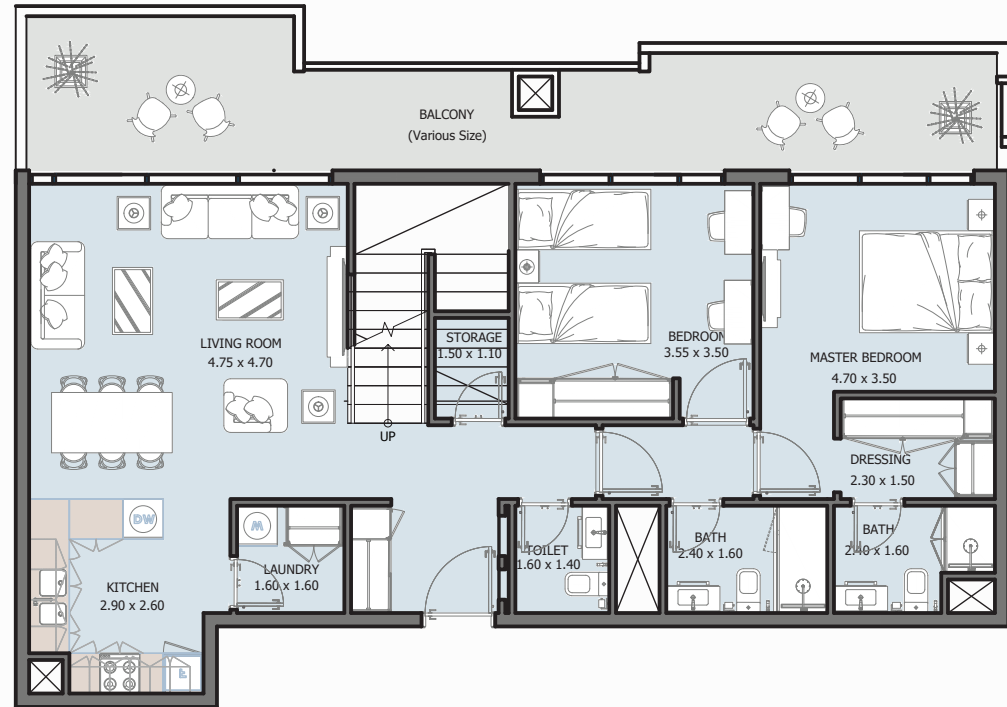
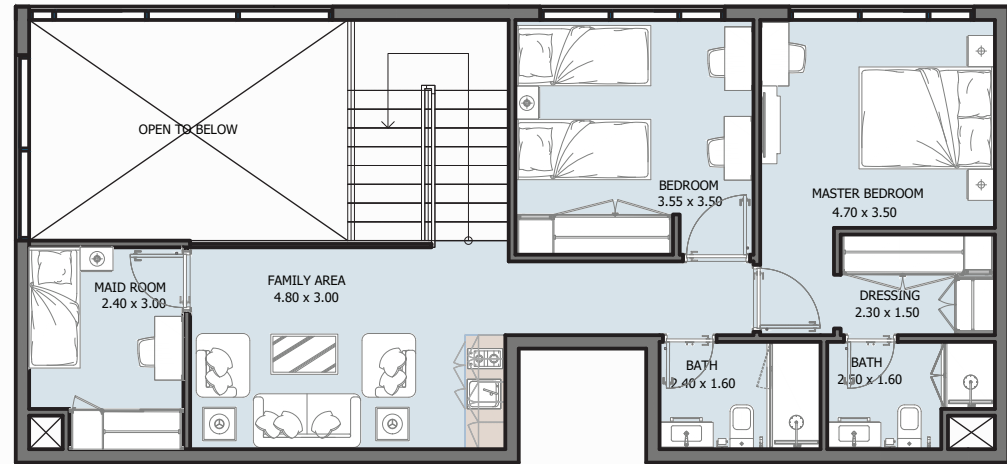
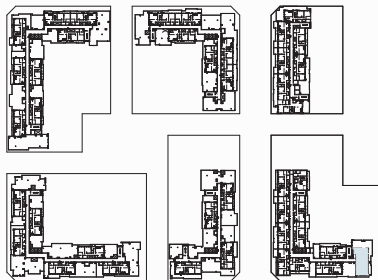


Internal Area	1575.83 sq.ft
Outdoor Area	180.51 to 506.33 sq.ft
Total Area	1756.34 to 2082.12 sq.ft

# 4B PENTHOUSE

## TYPE D

FROM 7<sup>TH</sup> FLOOR TO 8<sup>TH</sup> FLOOR

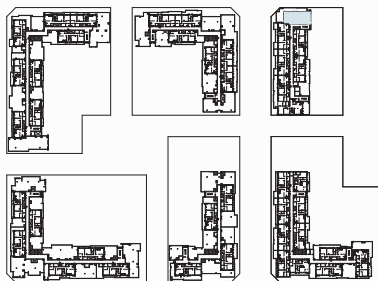
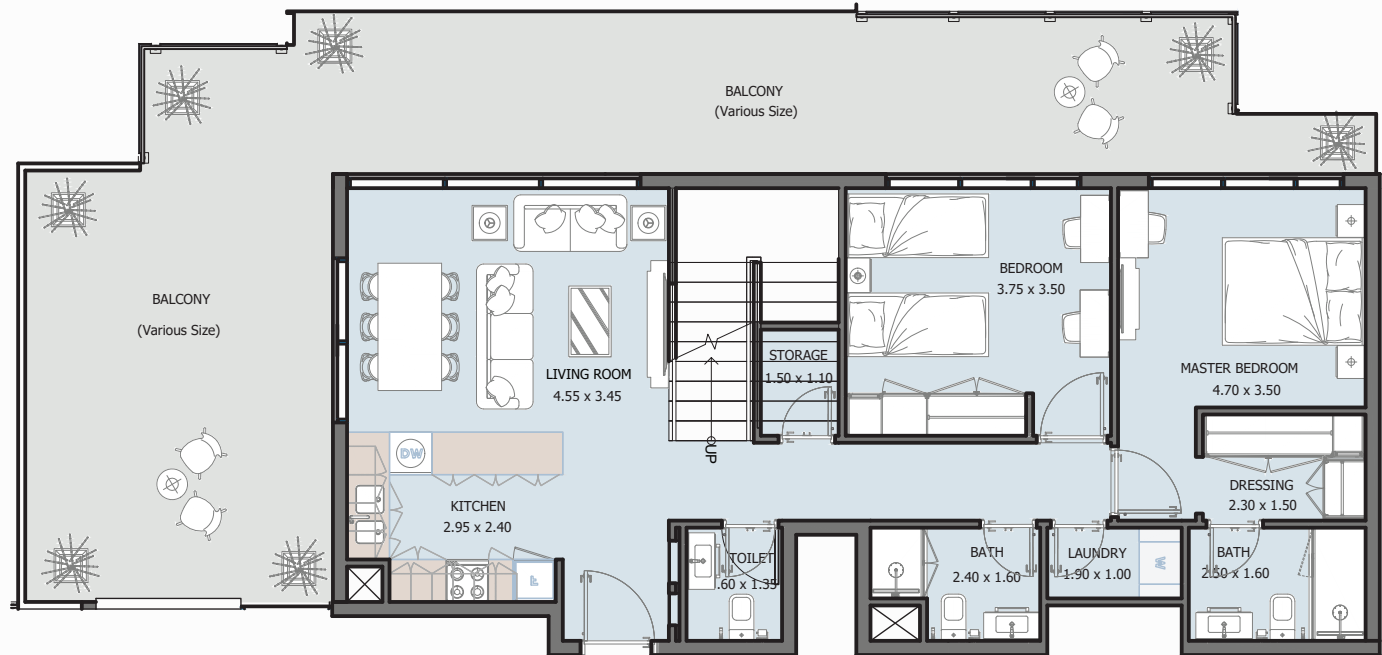
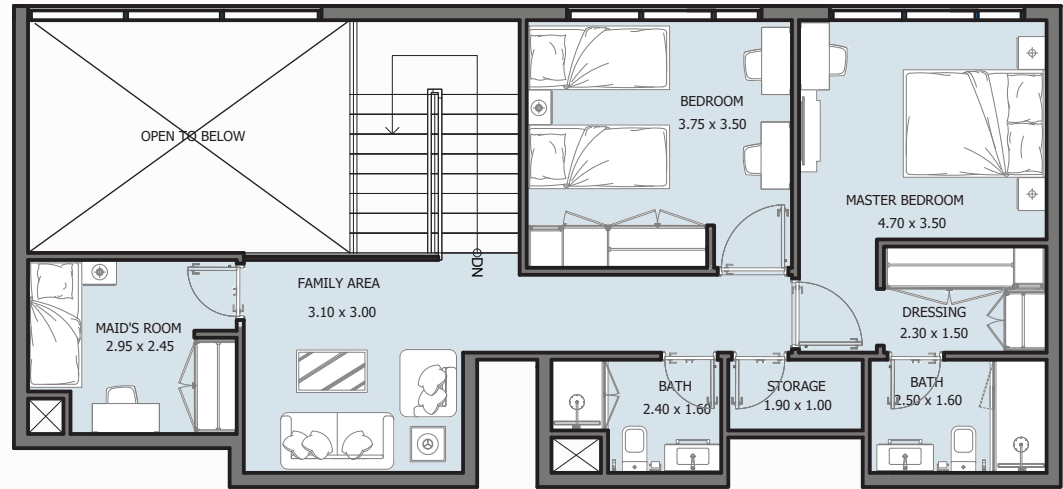


Internal Area	1840.20 sq.ft
Outdoor Area	1012.24 sq.ft
<b>Total Area</b>	<b>2852.43 sq.ft</b>

# 4B PENTHOUSE

## TYPE E

FROM 7<sup>TH</sup> FLOOR TO 8<sup>TH</sup> FLOOR

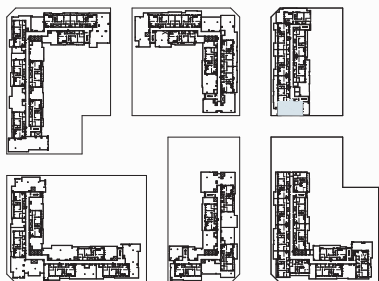
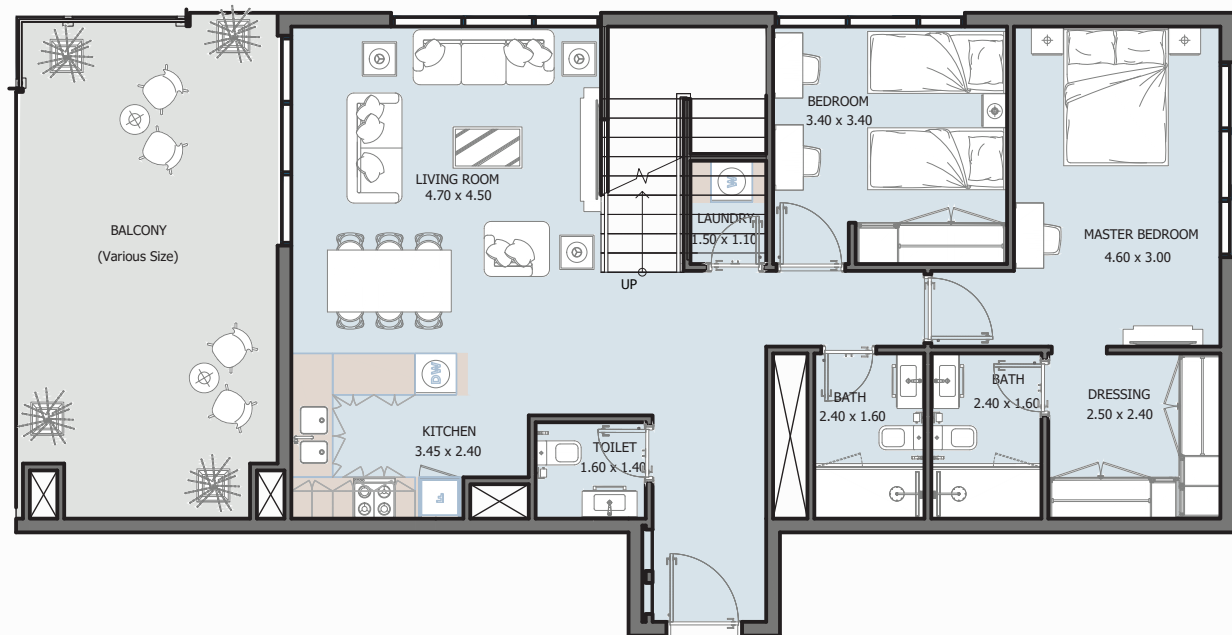
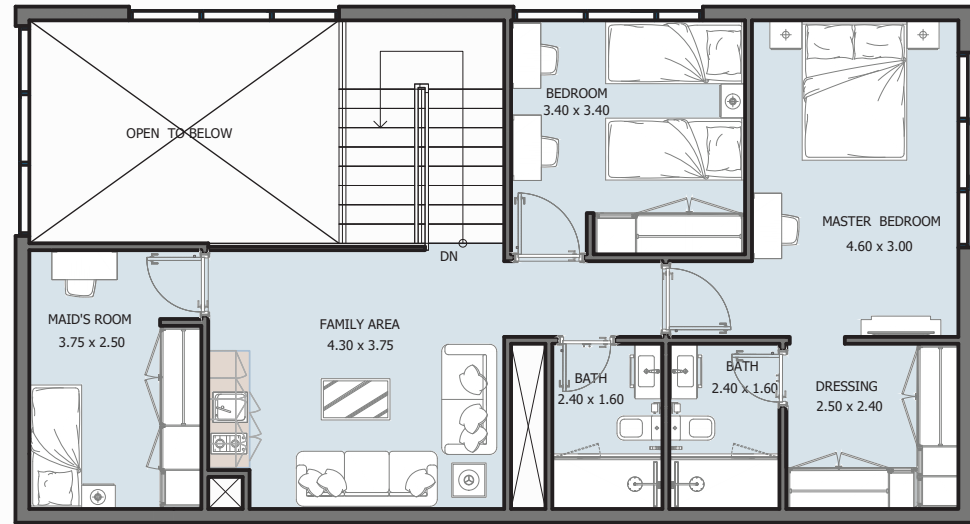


Internal Area	1781.21 sq.ft
Outdoor Area	731.73 sq.ft
<b>Total Area</b>	<b>2512.94 sq.ft</b>

# 4B PENTHOUSE

## TYPE F

FROM 7<sup>ST</sup> FLOOR TO 8<sup>TH</sup> FLOOR

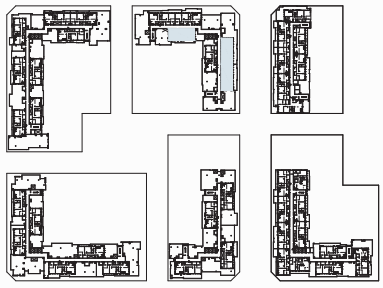
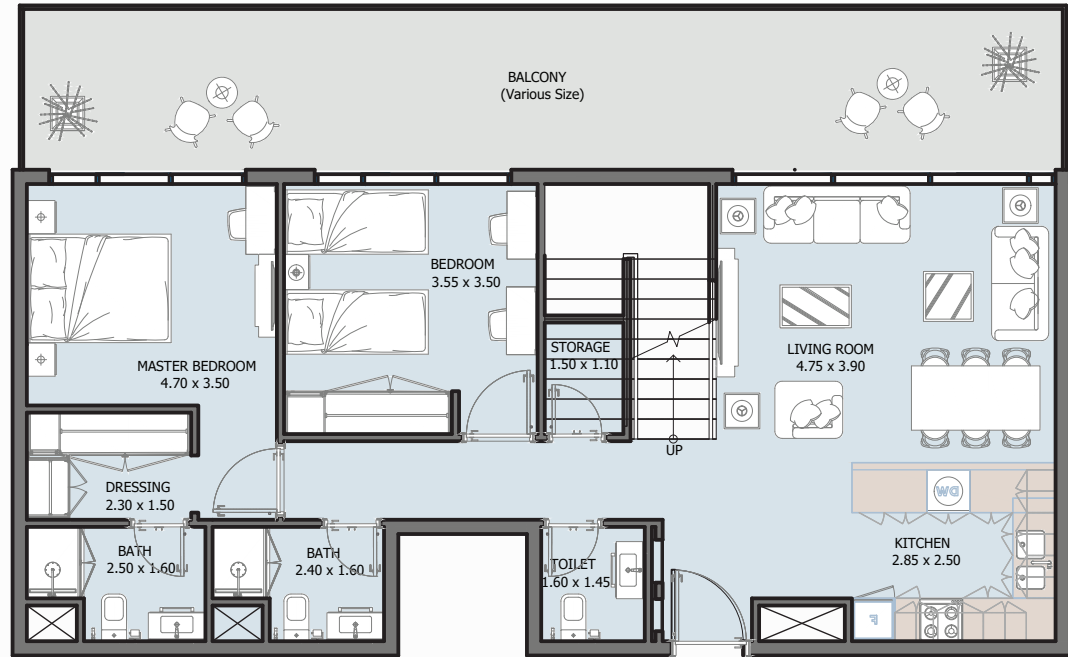
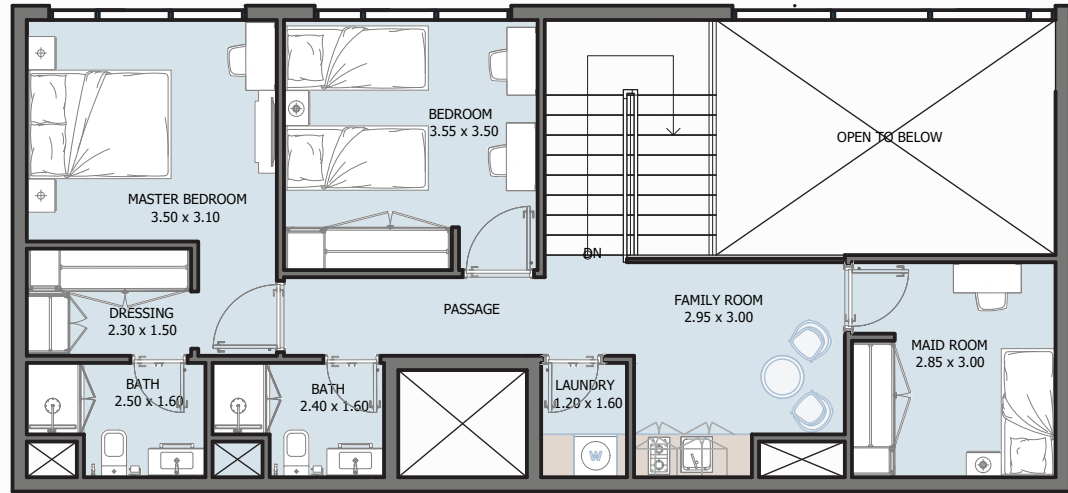


Internal Area	1987.45 sq.ft
Outdoor Area	309.57 sq.ft
<b>Total Area</b>	<b>2297.02 sq.ft</b>

# 4B PENTHOUSE

## TYPE G

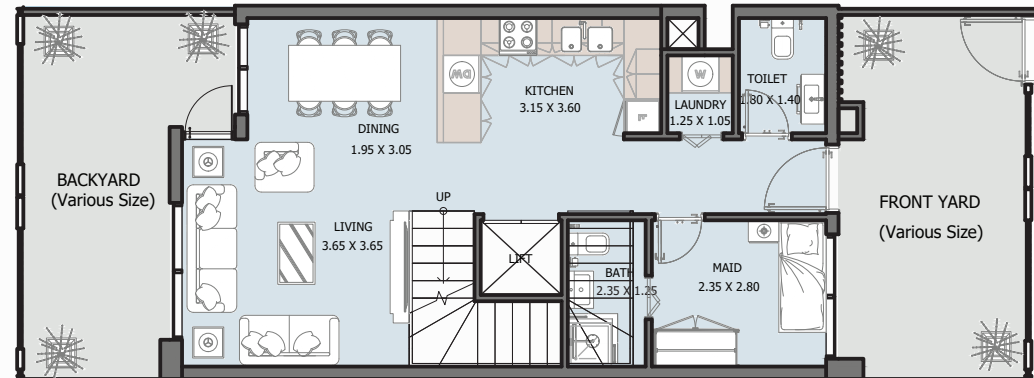
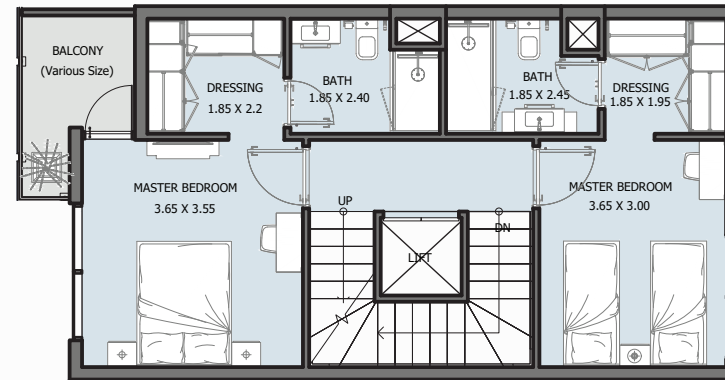
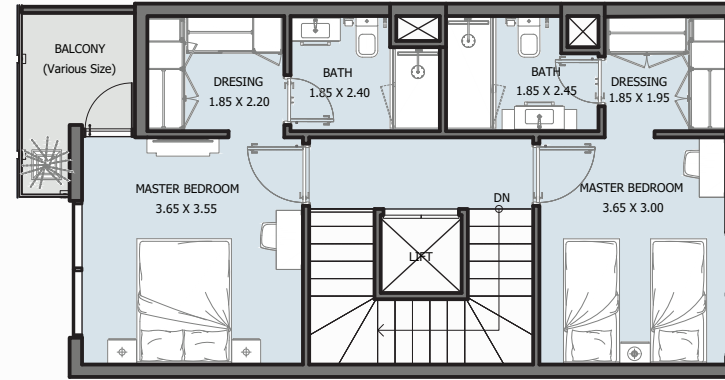
FROM 7<sup>TH</sup> FLOOR TO 8<sup>TH</sup> FLOOR



Internal Area	1782.93 sq.ft
Outdoor Area	271.16 to 339.05 sq.ft
Total Area	2054.09 to 2121.98 sq.ft

# 4B TOWNHOUSES

## GROUND FLOOR



Internal Area	1883.90 sq.ft
Outdoor Area	429.48 to 1614.26 sq.ft
Total Area	2313.38 to 3498.16 sq.ft

# ريپورتاج العقارية

## Reportage Properties

### Abu Dhabi-UAE | Head Office

Tamouh Tower  
28<sup>th</sup> Floor, Al Reem Island  
P.O. Box: 111949  
Tollfree: +971 800 77 55 2  
info@reportageuae.com

### Dubai-UAE

Anantara Business Tower  
3<sup>rd</sup> Floor, Business Bay  
P.O. Box: 27446  
Tollfree: +971 800 77 55 2  
info@reportageuae.com

### Cairo-Egypt

Building 217  
North Teseen St.  
New Cairo  
T: +20 12 0008 1190  
info@reportageeg.com

### Istanbul-Türkiye

Levent, Tekfen Tower  
8<sup>th</sup> Floor, Office 31, Büyükdere St.  
P.O. Box 34394, Şişli  
T: +90 530 774 9595  
info@reportage.com.tr

### Riyadh-KSA

Building No. 3230  
Al Aflaj St., Al Suwaidi  
P.O. Box 12791  
T: +966 11 215 1110  
info@reportageuae.com

### Moscow-Russia

Yefremova Street 10s1, k44/  
bld sadovye kvartaly  
P.O. Box 119048  
info@reportagerussia.com

---

For more information, visit [reportageuae.com](http://reportageuae.com)  
or call 800 77 55 2 | +971 50 244 1078

---



#### Legal Disclaimer:

The information contained in this brochure is confidential and is for the exclusive use of the recipient. This brochure may not be reproduced, distributed, delivered, or furnished to any person without the prior written approval of Reportage Properties. No representation or warranty (expressed or implied) is made or can be given with respect to the accuracy or completeness of the information herein, or that any future offer of units or apartments in the project will conform to the terms described herein. Nothing in this leaflet should be constructed as financial, legal, tax or regulatory advice. All accessories such as electronics, furniture, white goods, decorative elements and so forth included in this brochure are not part of the standard unit and used for illustration purposes only. All plans, layouts, pictures, renderings, information and details included in this brochure are indicative only and may change at any time up to the final 'as built' status in accordance with final designs of the project and regulatory approvals and planning permissions.

**R.**