

AYAMORE

R E S I D E N C E

DUBAI ISLANDS

AYAT
DEVELOPMENT



AYAT DEVELOPMENT

AYAT Development, part of AYAT Group founded in 2015, has been crafting extraordinary spaces by seamlessly combining strategic planning, creative execution, and uncompromising quality. From luxurious villas and iconic towers to major governmental projects like the Sheikh Zayed Housing Program, our portfolio is a testament to innovation and excellence. Guided by professionalism and integrity, we partner with landowners, investors, and developers to create value-driven projects that inspire and endure. With an unwavering commitment to safety, timely delivery, and client satisfaction, AYAT Development brings visionary ideas to life, leaving a legacy of lasting landmarks.

THE INTERIORS

FLOOR PLANS

AYAMORE RESIDENCE | DUBAI ISLANDS

OVERALL PLAN- GROUND FLOOR

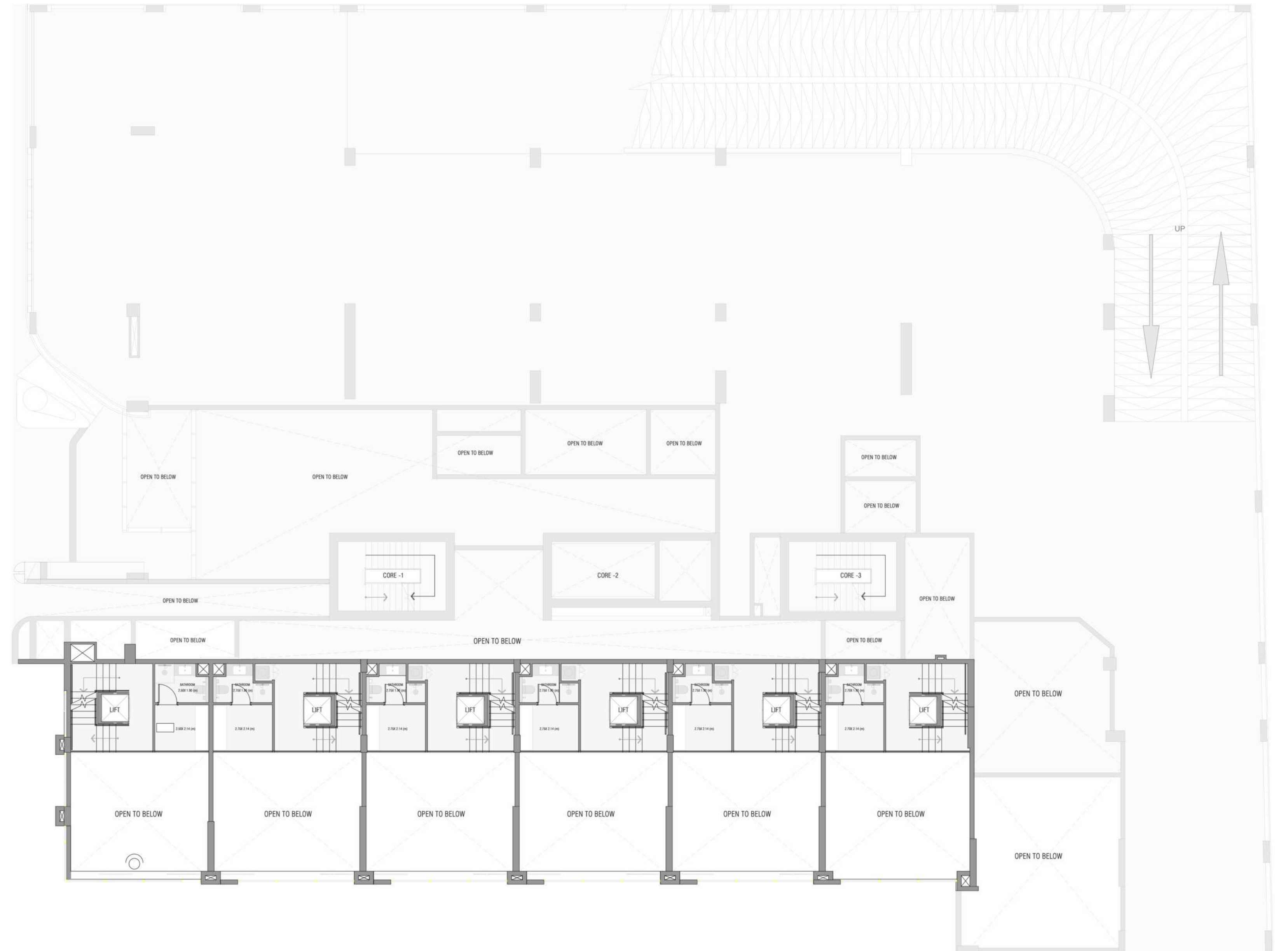
AYAMORE
RESIDENCE



AYAMORE RESIDENCE | DUBAI ISLANDS

OVERALL PLAN- MEZZANINE FLOOR

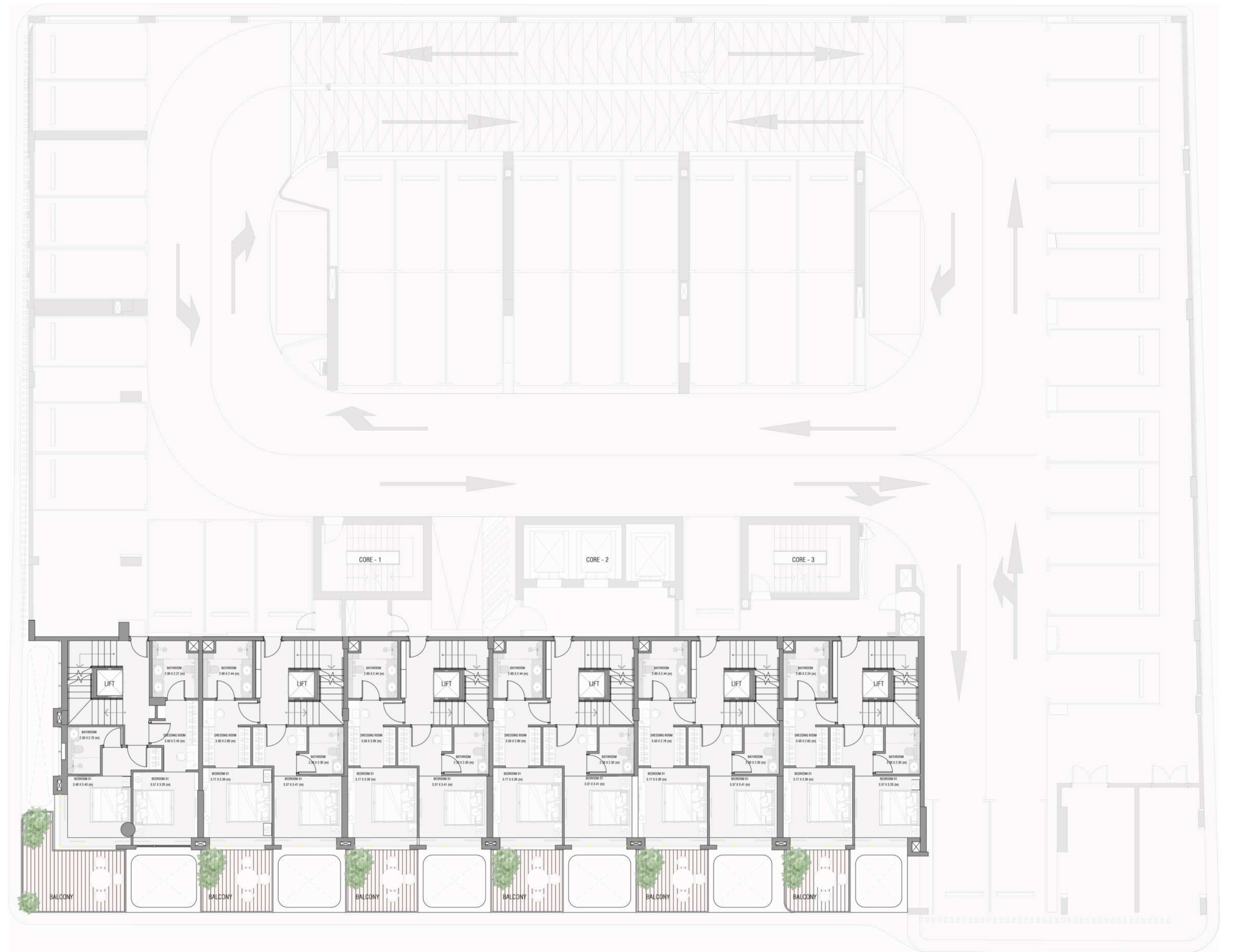
AYAMORE
RESIDENCE



AYAMORE RESIDENCE | DUBAI ISLANDS

OVERALL PLAN- PODIUM 01 FLOOR

AYAMORE
RESIDENCE



AYAMORE RESIDENCE | DUBAI ISLANDS

OVERALL PLAN- PODIUM 02 FLOOR

AYAMORE
RESIDENCE



AYAMORE RESIDENCE | DUBAI ISLANDS

OVERALL PLAN - 2ND 4TH 6TH 8TH FLOORS



AYAMORE
RESIDENCE

AYAMORE RESIDENCE | DUBAI ISLANDS

OVERALL PLAN - 3RD 5TH 7TH FLOORS

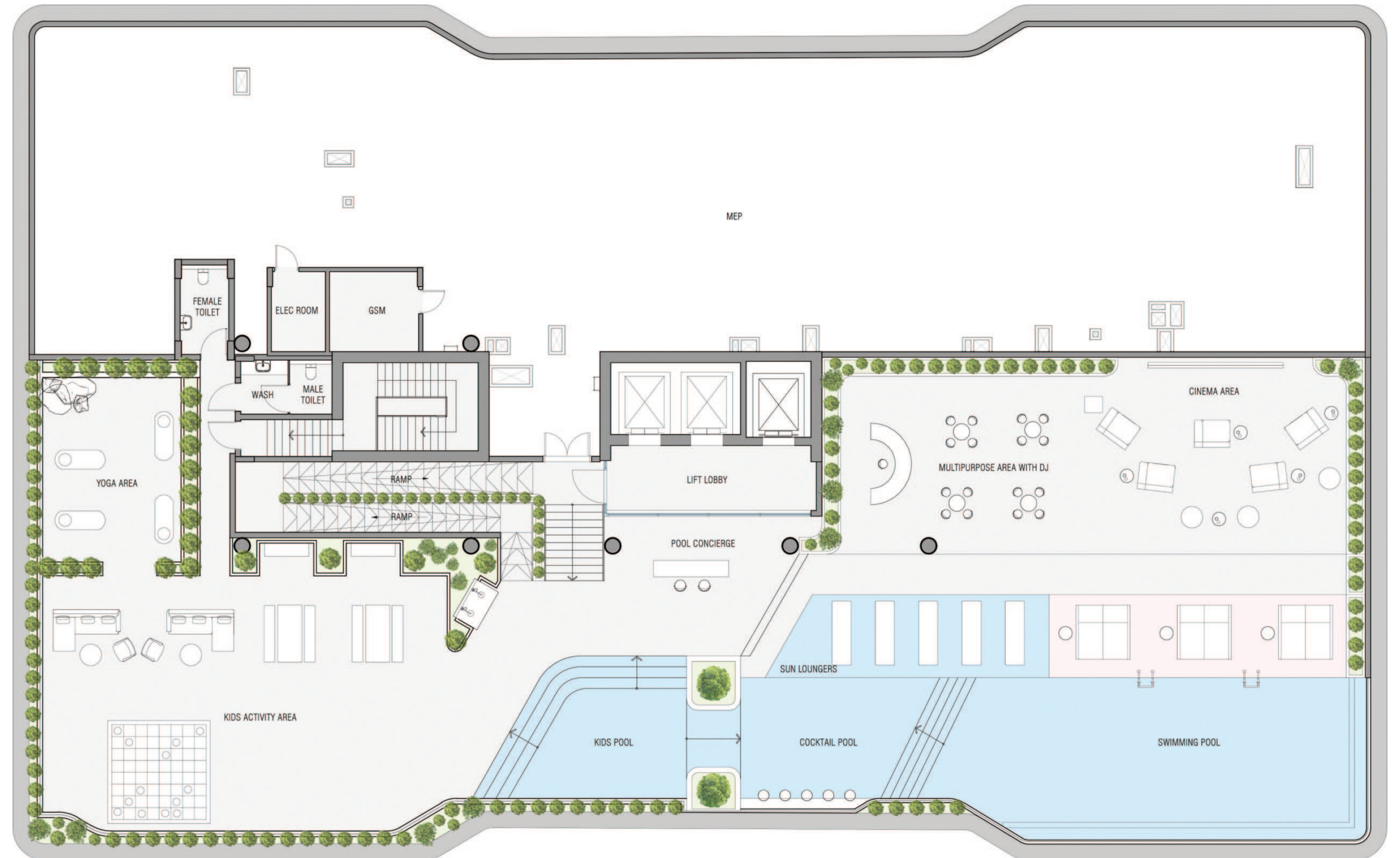


AYAMORE
RESIDENCE

AYAMORE RESIDENCE | DUBAI ISLANDS

OVERALL PLAN- ROOF PLAN

AYAMORE
RESIDENCE



THE INTERIORS

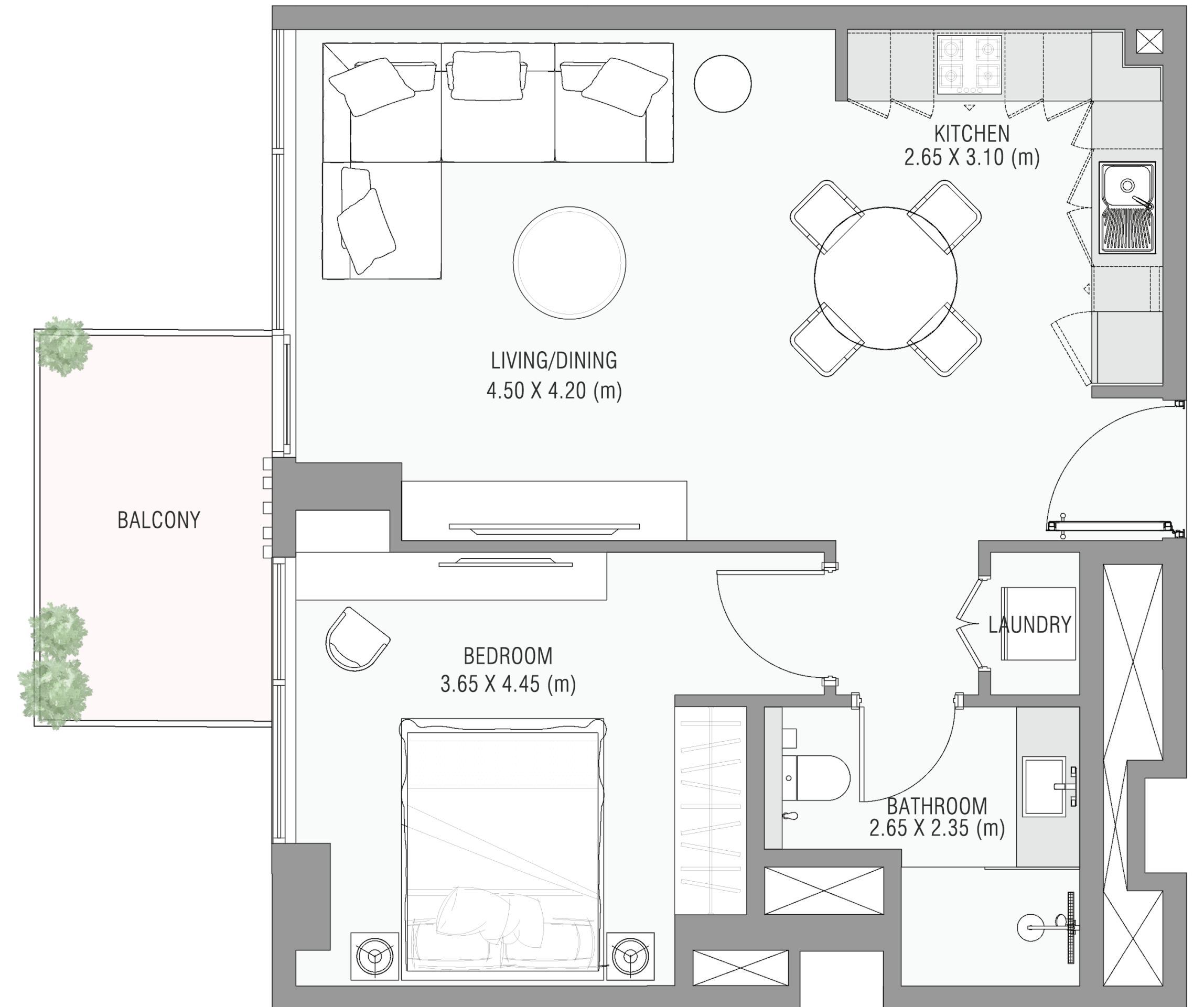
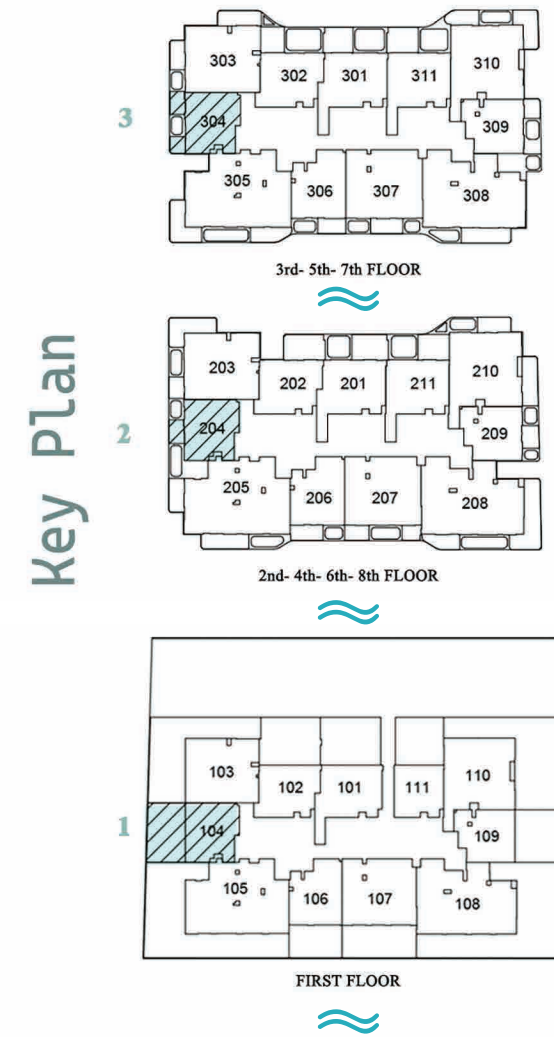
THE APARTMENTS

I BEDROOM APARTMENT TYPE A | 04

First Floor	SQM	SQF
Suite Area	57.67	620.75
Balcony Area	42.37	456.07
Total Unit Area	100.04	1076.82

Floor (2,4,6,8)	SQM	SQF
Suite Area	57.38	617.63
Balcony Area	6.8	73.19
Total Unit Area	64.18	690.83

Floor (3,5,7)	SQM	SQF
Suite Area	57.29	616.66
Balcony Area	11.55	124.32
Total Unit Area	68.84	740.99



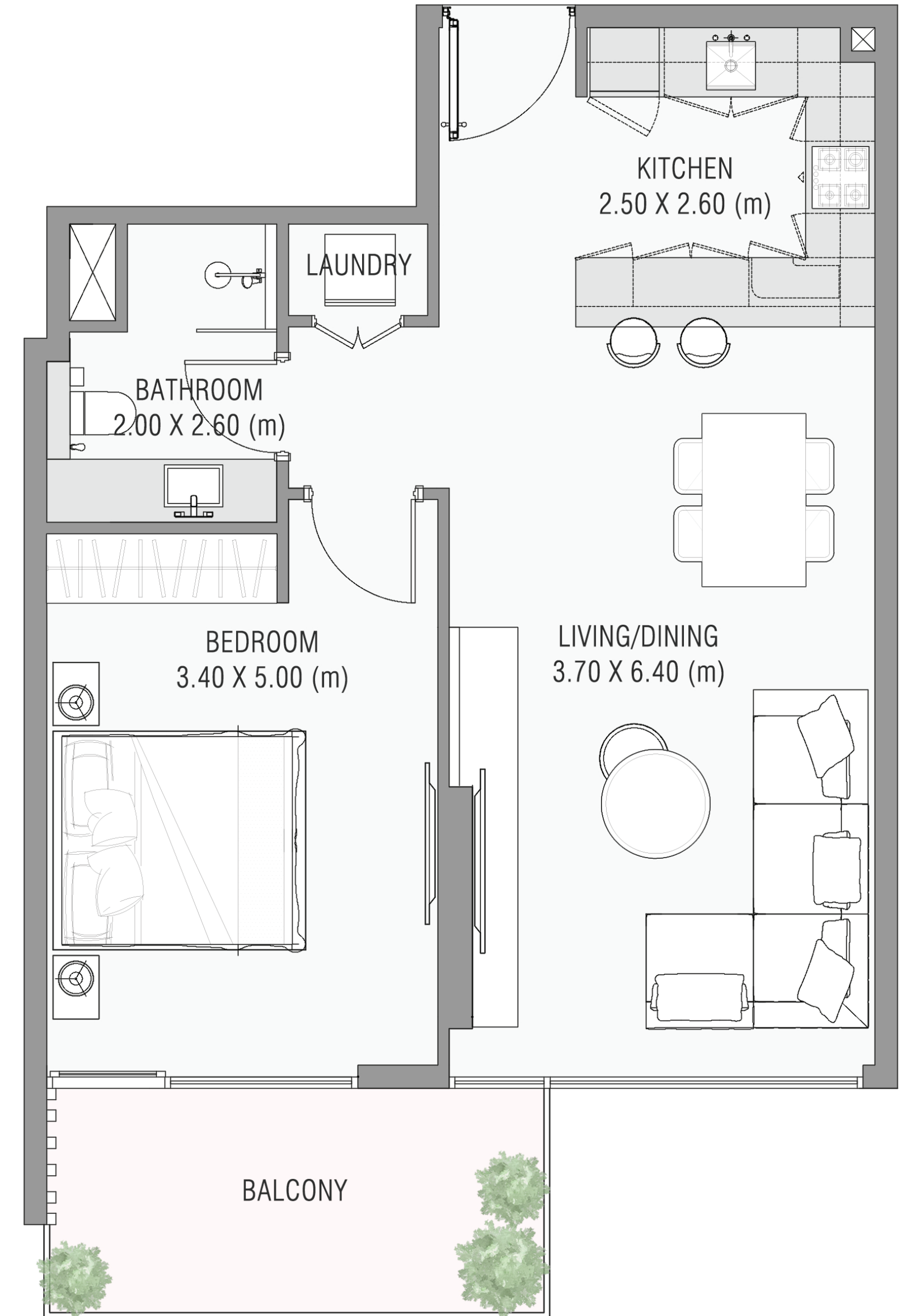
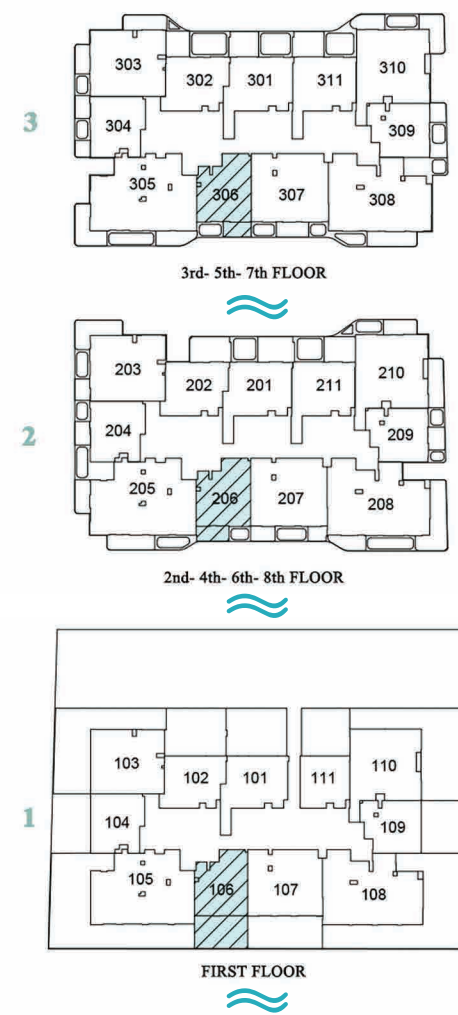
I BEDROOM APARTMENT TYPE B | 06

First Floor	SQM	SQF
Suite Area	61.00	656.60
Balcony Area	33.10	356.29
Total Unit Area	94.10	1012.88

Floor (2,4,6,8)	SQM	SQF
Suite Area	61.62	663.27
Balcony Area	9.04	97.31
Total Unit Area	70.66	760.58

Floor (3,5,7)	SQM	SQF
Suite Area	61.63	663.38
Balcony Area	7.70	82.88
Total Unit Area	68.84	746.26

Key Plan



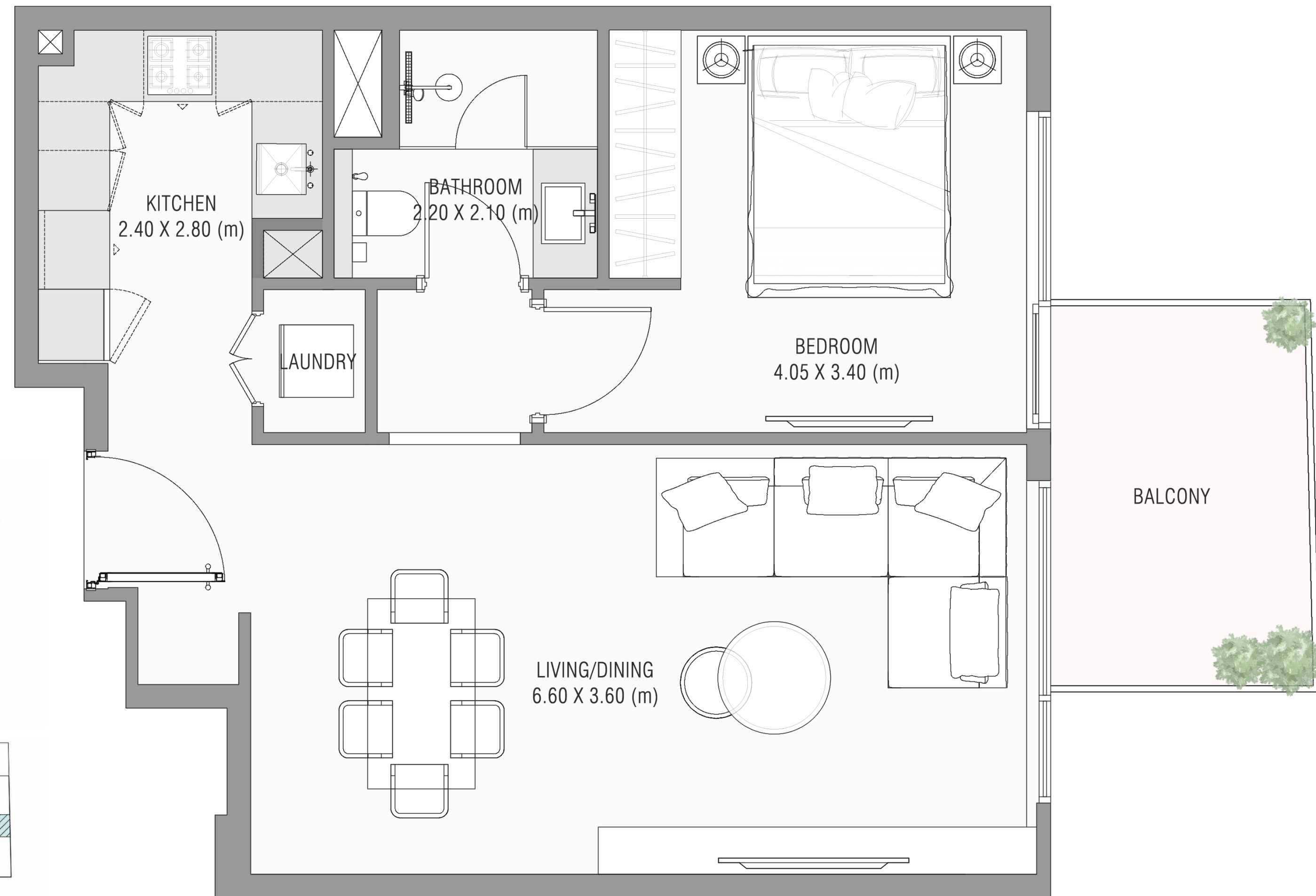
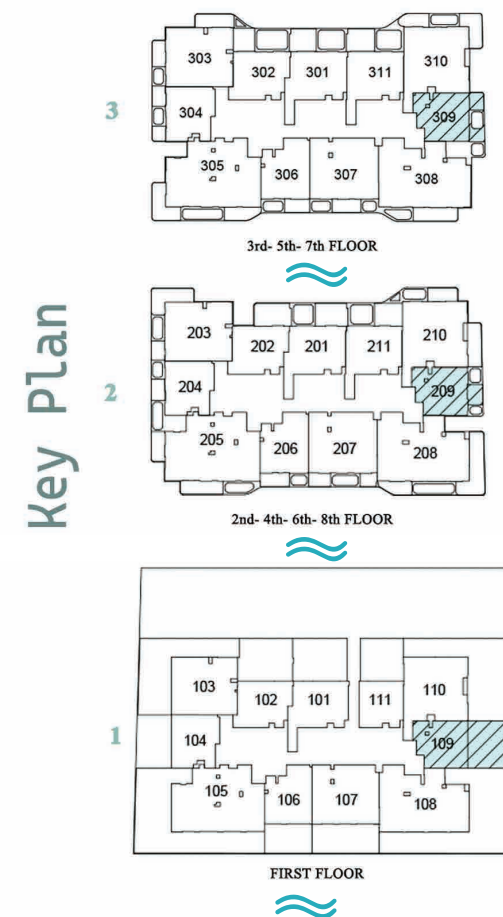
I BEDROOM APARTMENT TYPE C | 09

First Floor	SQM	SQF
Suite Area	56.62	609.45
Balcony Area	48.76	524.85
Total Unit Area	105.38	1134.30

Floor (2,4,6,8)	SQM	SQF
Suite Area	56.37	606.76
Balcony Area	7.38	79.44
Total Unit Area	63.75	686.20

Floor (3,5,7)	SQM	SQF
Suite Area	56.30	606.01
Balcony Area	10.34	111.30
Total Unit Area	66.64	717.31

AYAMORE
RESIDENCE



I BEDROOM APARTMENT TYPE D | 01 & 11

Floor (101)	SQM	SQF
Suite Area	69.07	743.46
Balcony Area	60.87	655.20
Total Unit Area	129.94	1398.66

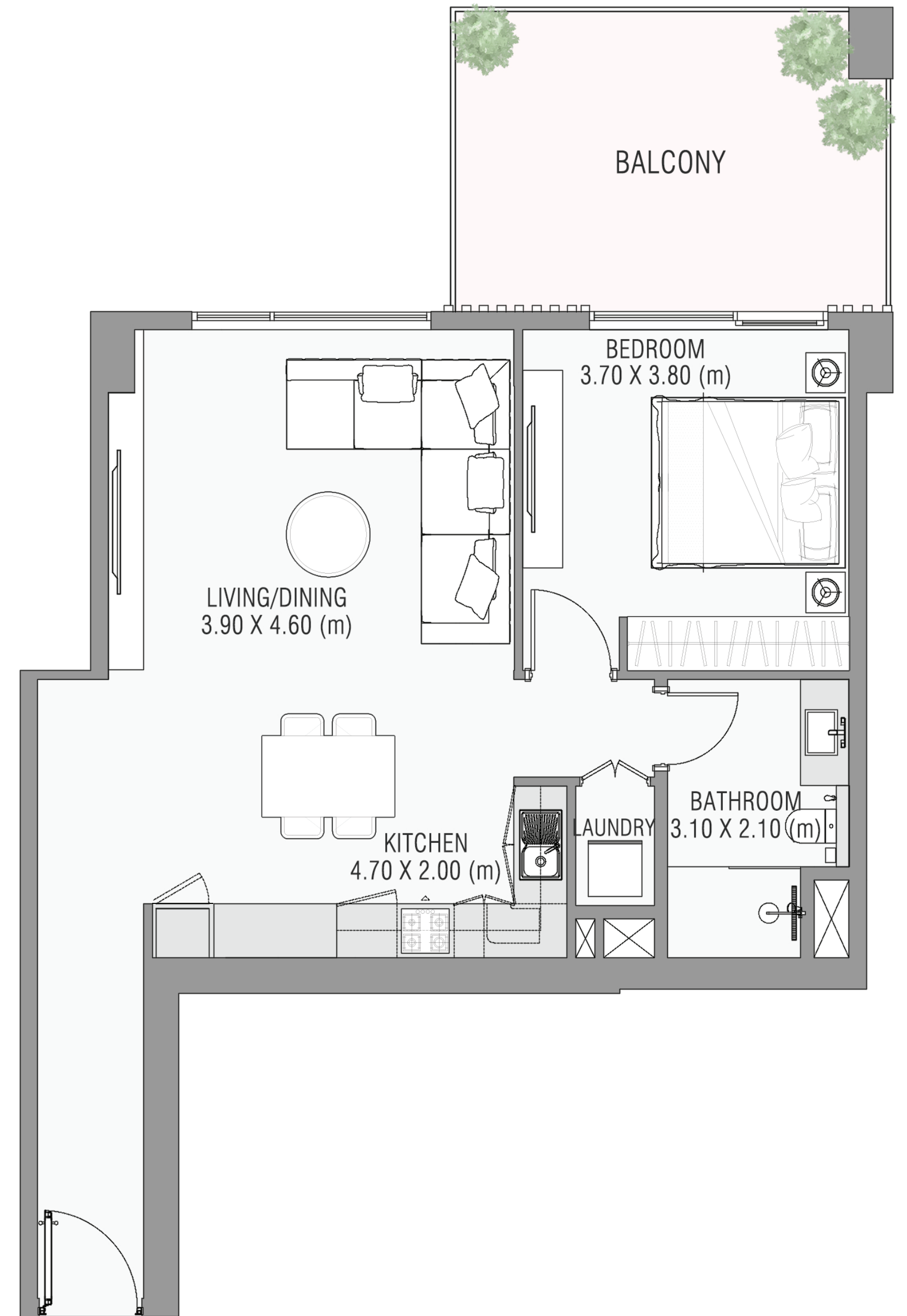
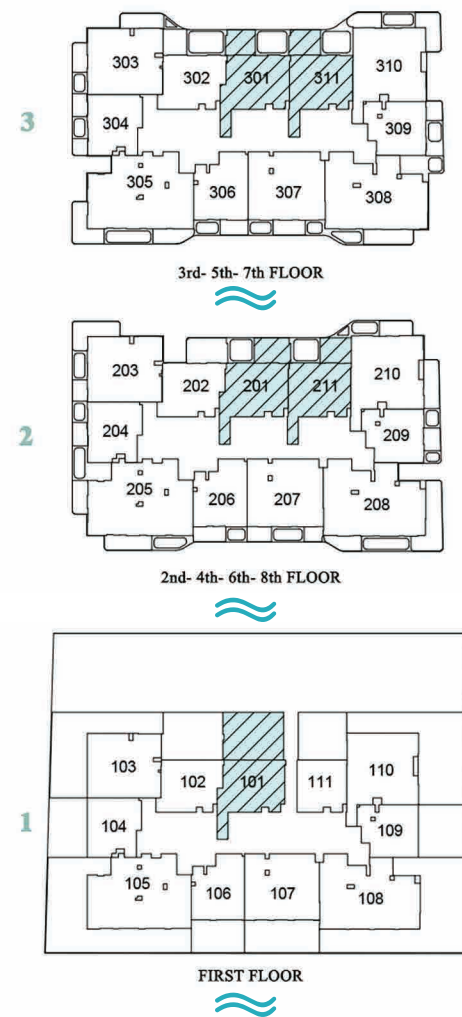
Floor (201,401,601,801)	SQM	SQF
Suite Area	69.84	751.75
Balcony Area	16.95	182.45
Total Unit Area	86.79	934.20

Floor (301,501,701)	SQM	SQF
Suite Area	69.69	750.14
Balcony Area	13.72	147.68
Total Unit Area	83.41	897.82

Floor (211,411,611,811)	SQM	SQF
Suite Area	67.24	723.77
Balcony Area	14.64	157.58
Total Unit Area	81.88	881.35

Floor (311, 511, 711)	SQM	SQF
Suite Area	67.14	722.68
Balcony Area	14.57	156.83
Total Unit Area	81.71	879.51

Key Plan



I BEDROOM APARTMENT TYPE DI | 02

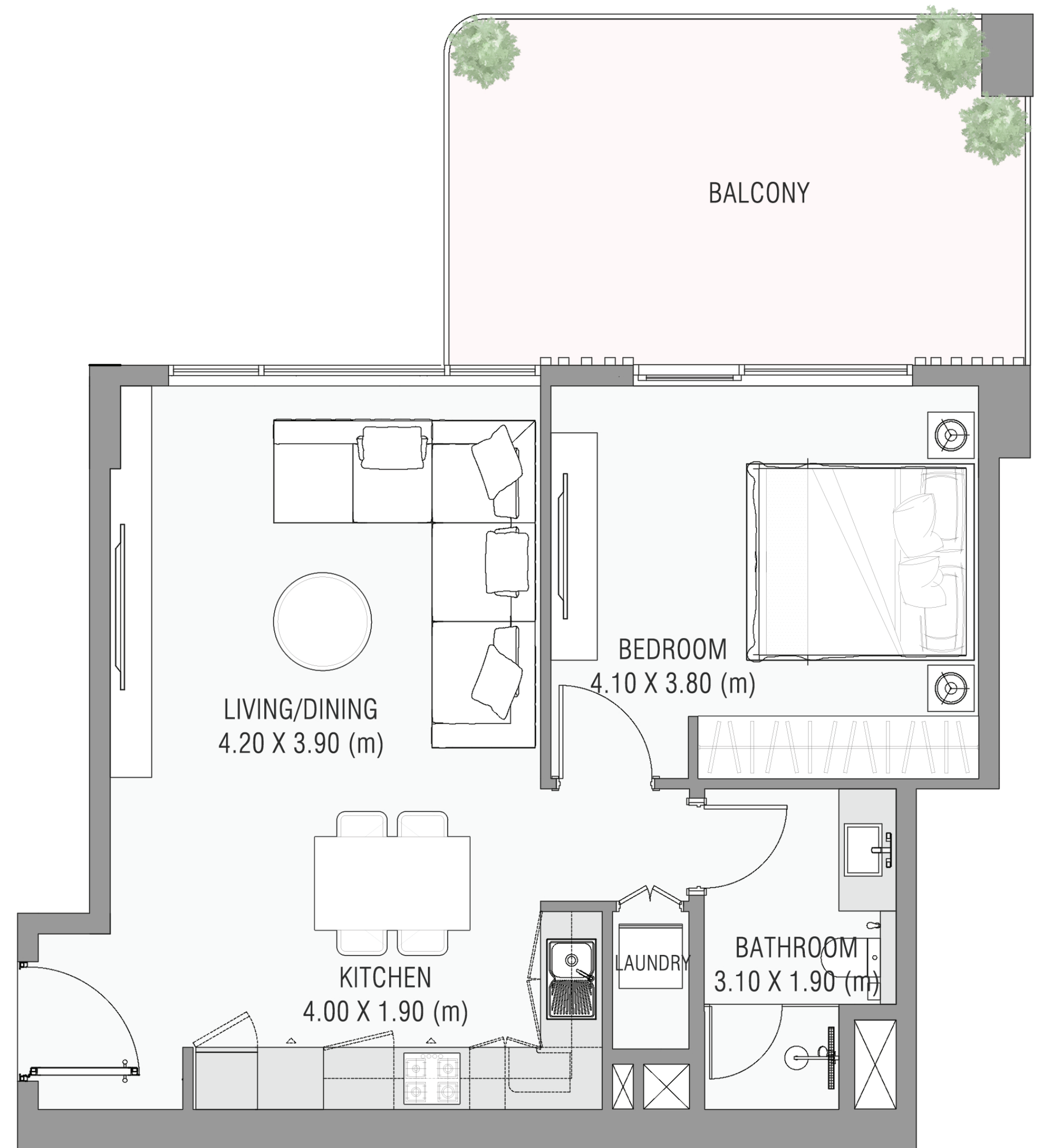
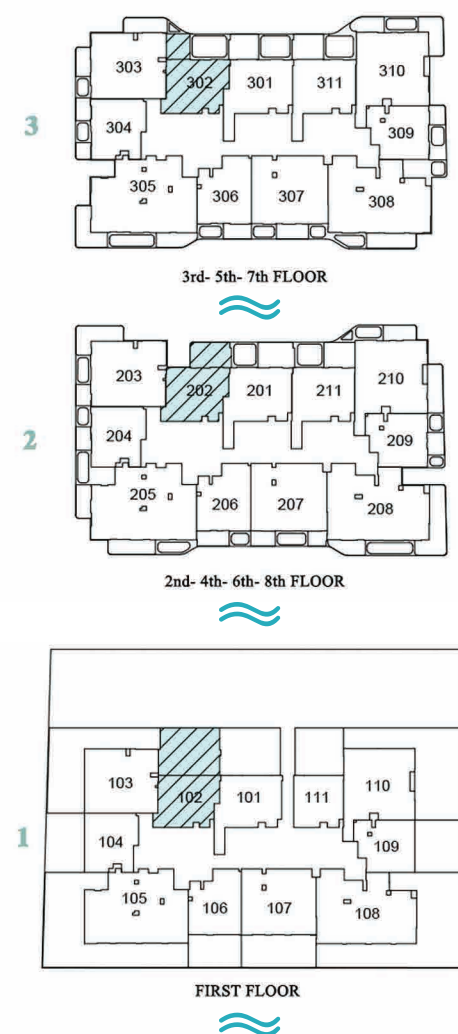
First Floor	SQM	SQF
Suite Area	59.73	642.93
Balcony Area	59.90	644.76
Total Unit Area	119.63	1287.69

Floor (2,4,6,8)	SQM	SQF
Suite Area	60.56	651.86
Balcony Area	19.25	207.21
Total Unit Area	79.81	859.07

Floor (3,5,7)	SQM	SQF
Suite Area	60.56	651.86
Balcony Area	11.20	120.56
Total Unit Area	71.76	772.42

AYAMORE
RESIDENCE

Key Plan

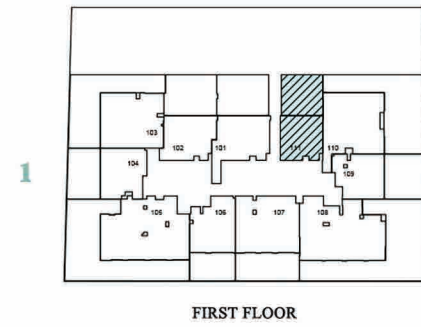


I BEDROOM APARTMENT TYPE E | II

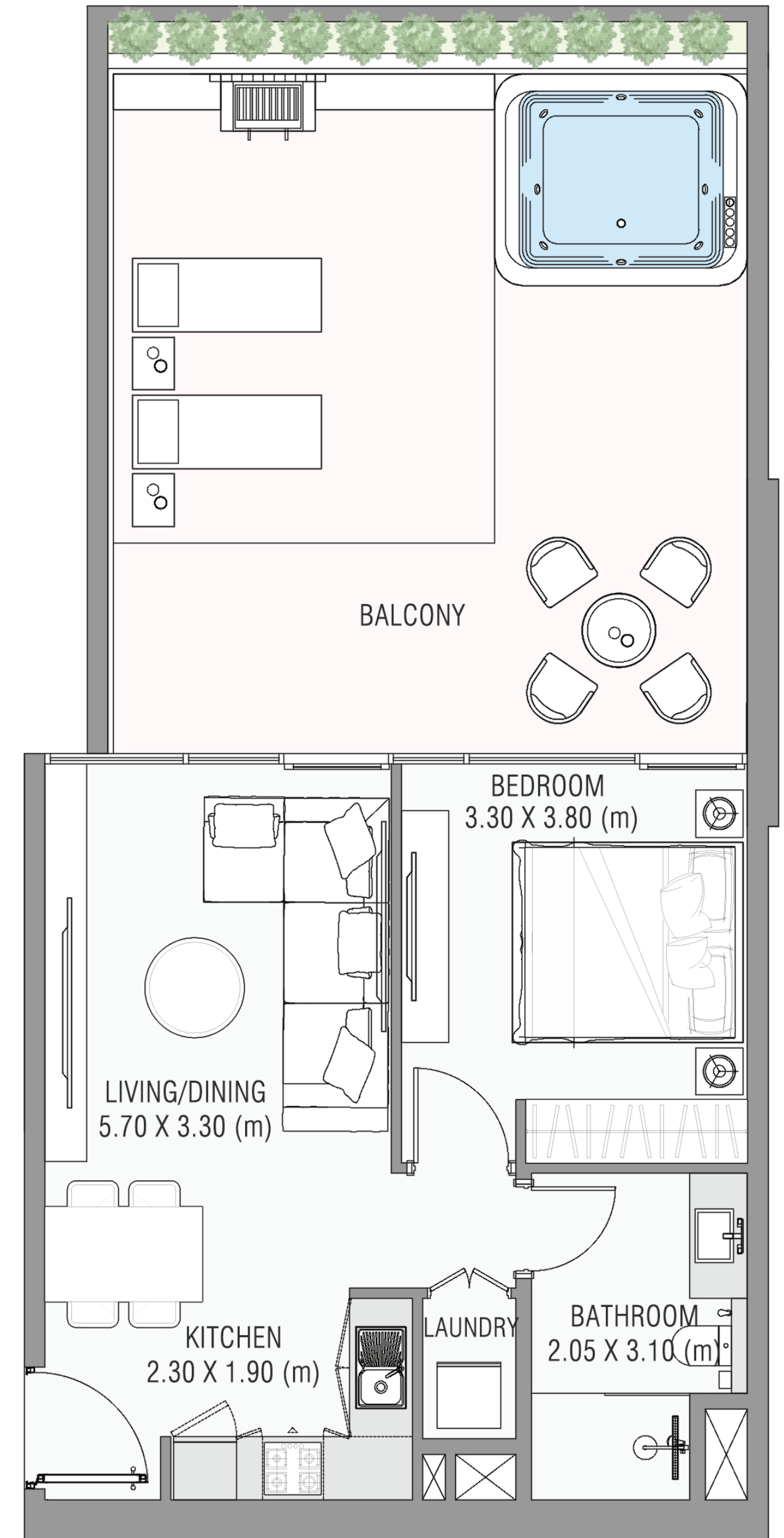
First Floor	SQM	SQF
Suite Area	48.49	521.94
Balcony Area	49.19	529.48
Total Unit Area	97.68	1051.42

AYAMORE
RESIDENCE

Key Plan



FIRST FLOOR



2 BEDROOM APARTMENT TYPE A | 03

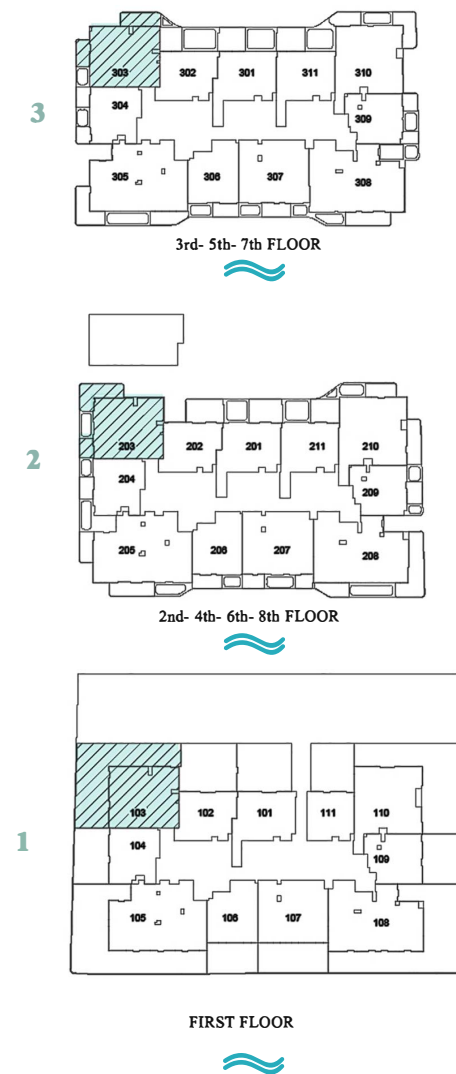
First Floor	SQM	SQF
Suite Area	90.45	973.60
Balcony Area	95.23	1025.05
Total Unit Area	185.68	1998.64

Floor (2,4,6,8)	SQM	SQF
Suite Area	90.13	970.15
Balcony Area	23.40	251.88
Total Unit Area	113.53	1222.03

Floor (3,5,7)	SQM	SQF
Suite Area	90.13	970.15
Balcony Area	20.29	218.40
Total Unit Area	110.42	1188.55

AYAMORE
RESIDENCE

Key Plan



2 BEDROOM APARTMENT TYPE B | 07

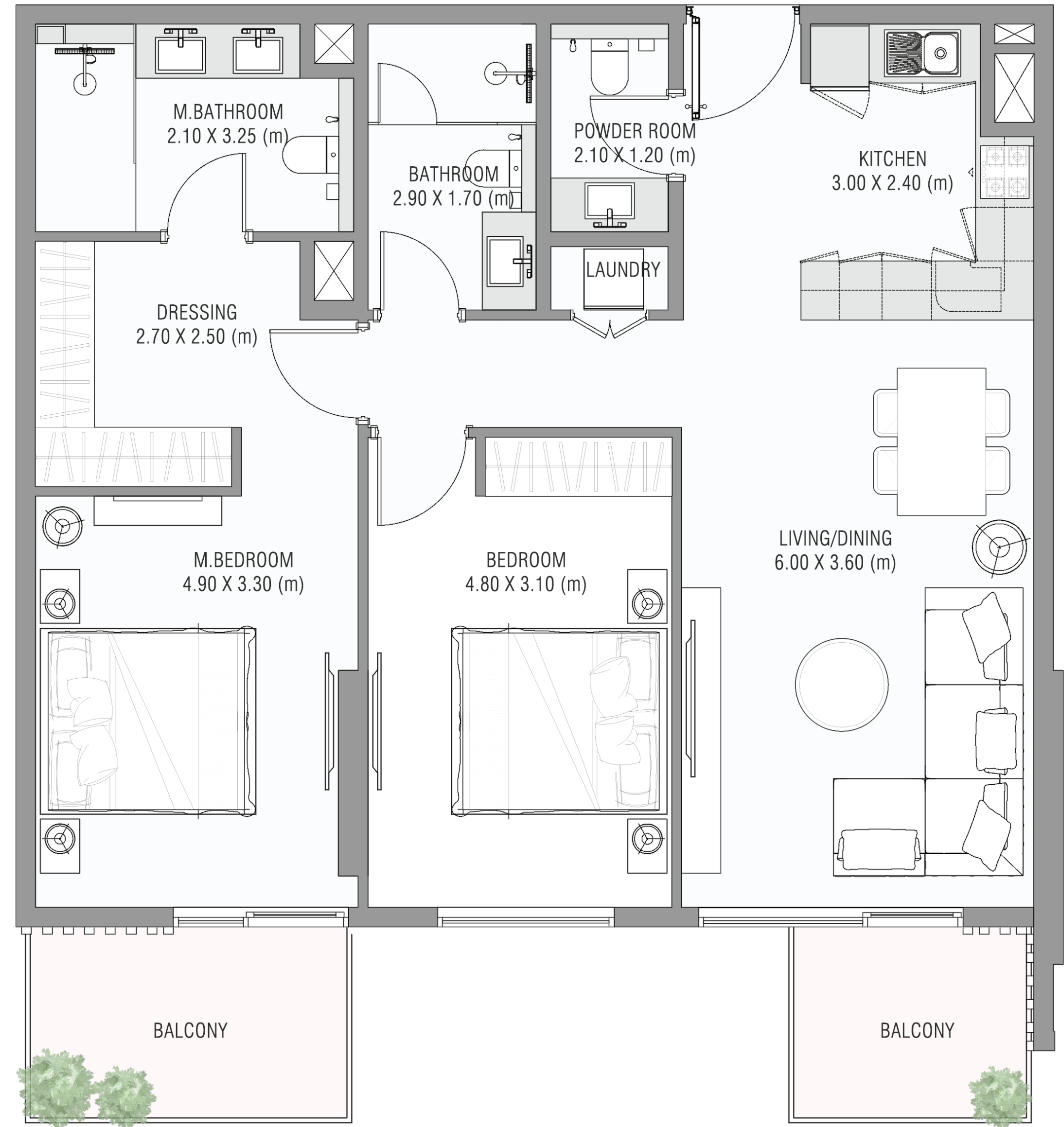
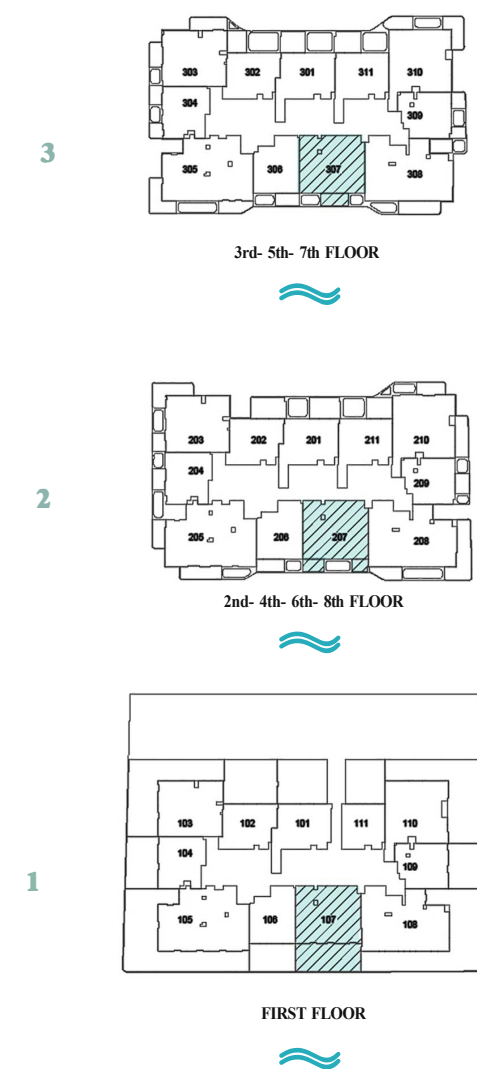
First Floor	SQM	SQF
Suite Area	93.95	1011.27
Balcony Area	46.20	497.29
Total Unit Area	140.15	1508.56

Floor (2,4,6,8)	SQM	SQF
Suite Area	94.76	1019.99
Balcony Area	12.04	129.60
Total Unit Area	106.80	1149.59

Floor (3,5,7)	SQM	SQF
Suite Area	94.84	1020.85
Balcony Area	8.90	95.80
Total Unit Area	103.74	1116.65

AYAMORE
RESIDENCE

Key Plan



2 BEDROOM APARTMENT TYPE C | 10

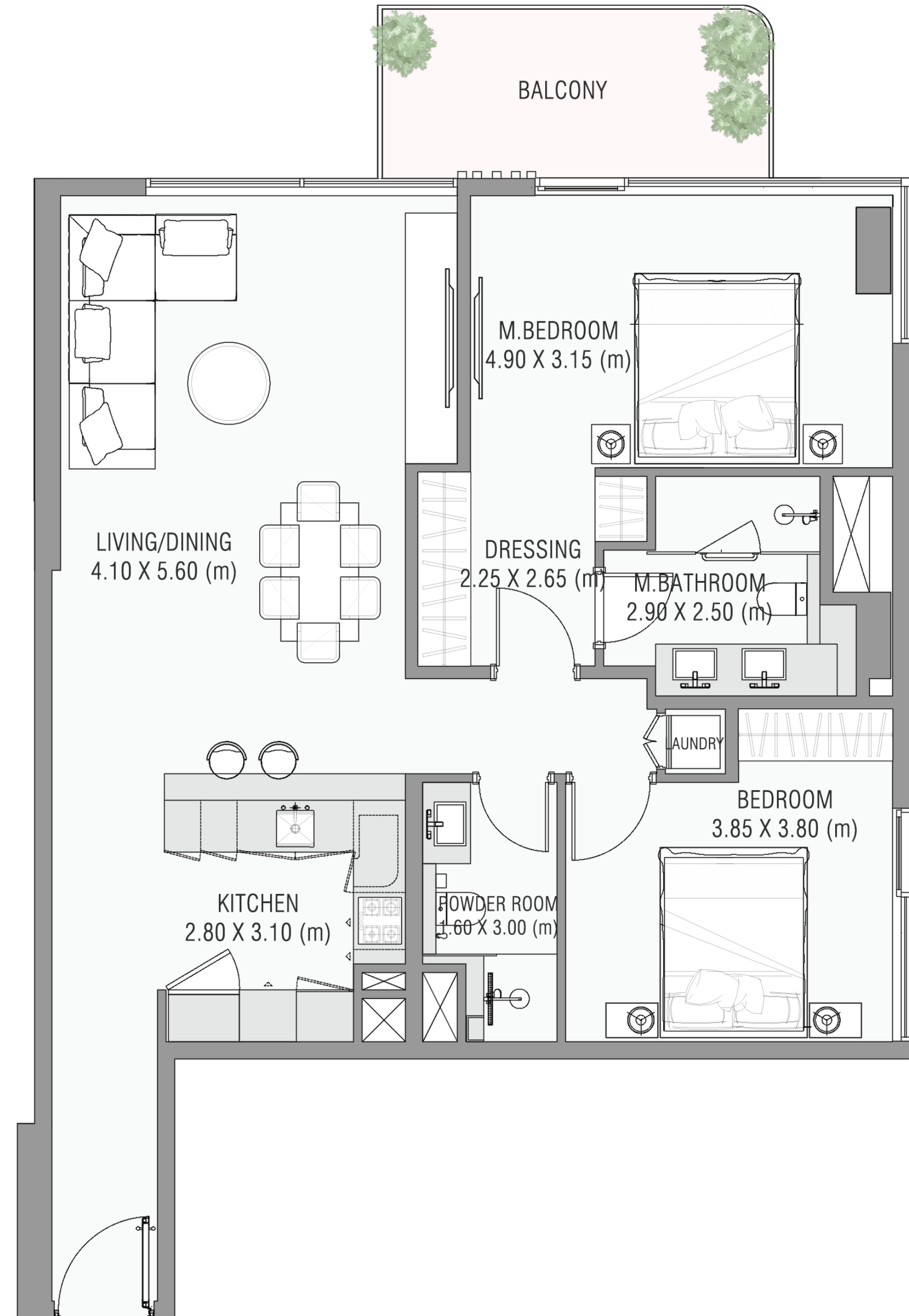
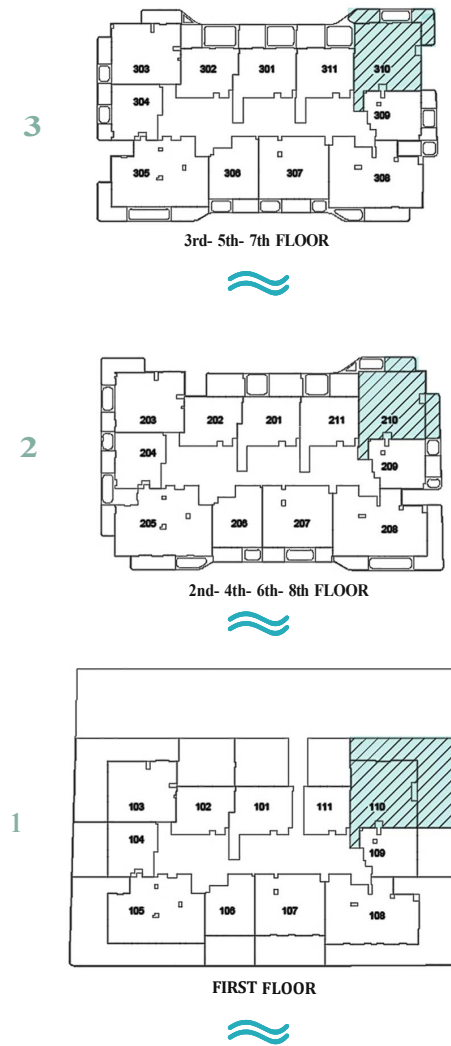
First Floor	SQM	SQF
Suite Area	99.40	1069.93
Balcony Area	119.12	1282.20
Total Unit Area	218.52	2352.13

Floor (2,4,6,8)	SQM	SQF
Suite Area	101.41	1091.46
Balcony Area	22.27	250.15
Total Unit Area	123.68	1341.61

Floor (3,5,7)	SQM	SQF
Suite Area	101.41	1091.57
Balcony Area	22.27	239.71
Total Unit Area	123.68	1331.28

AYAMORE
RESIDENCE

Key Plan



3 BEDROOM APARTMENT TYPE C | 05

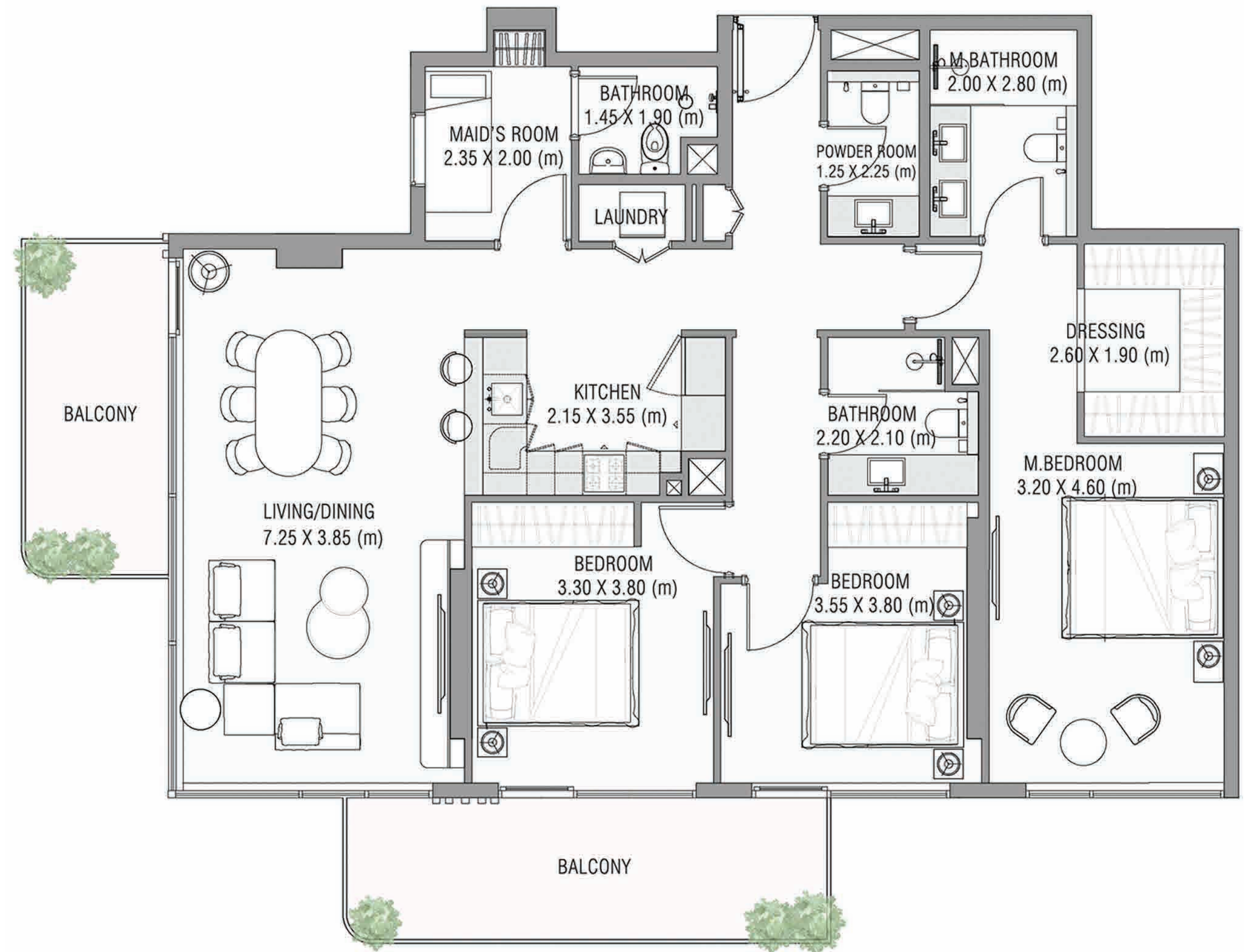
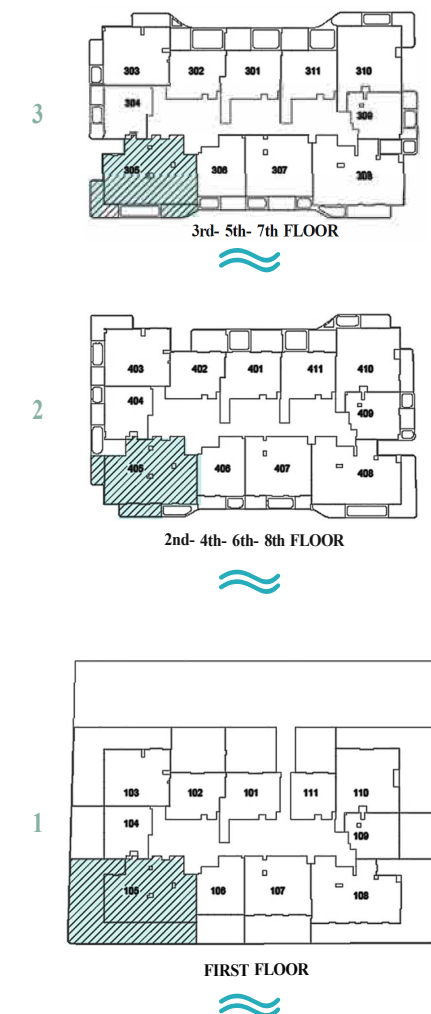
First Floor	SQM	SQF
Suite Area	130.10	1400.38
Balcony Area	127.54	1372.83
Total Unit Area	257.64	2773.21

Floor (2,4,6,8)	SQM	SQF
Suite Area	131.36	1413.95
Balcony Area	22.65	243.80
Total Unit Area	154.01	1657.75

Floor (3,5,7)	SQM	SQF
Suite Area	131.37	1414.05
Balcony Area	26.53	285.57
Total Unit Area	157.90	1699.62

AYAMORE
RESIDENCE

Key Plan



3 BEDROOM APARTMENT TYPE D | 08

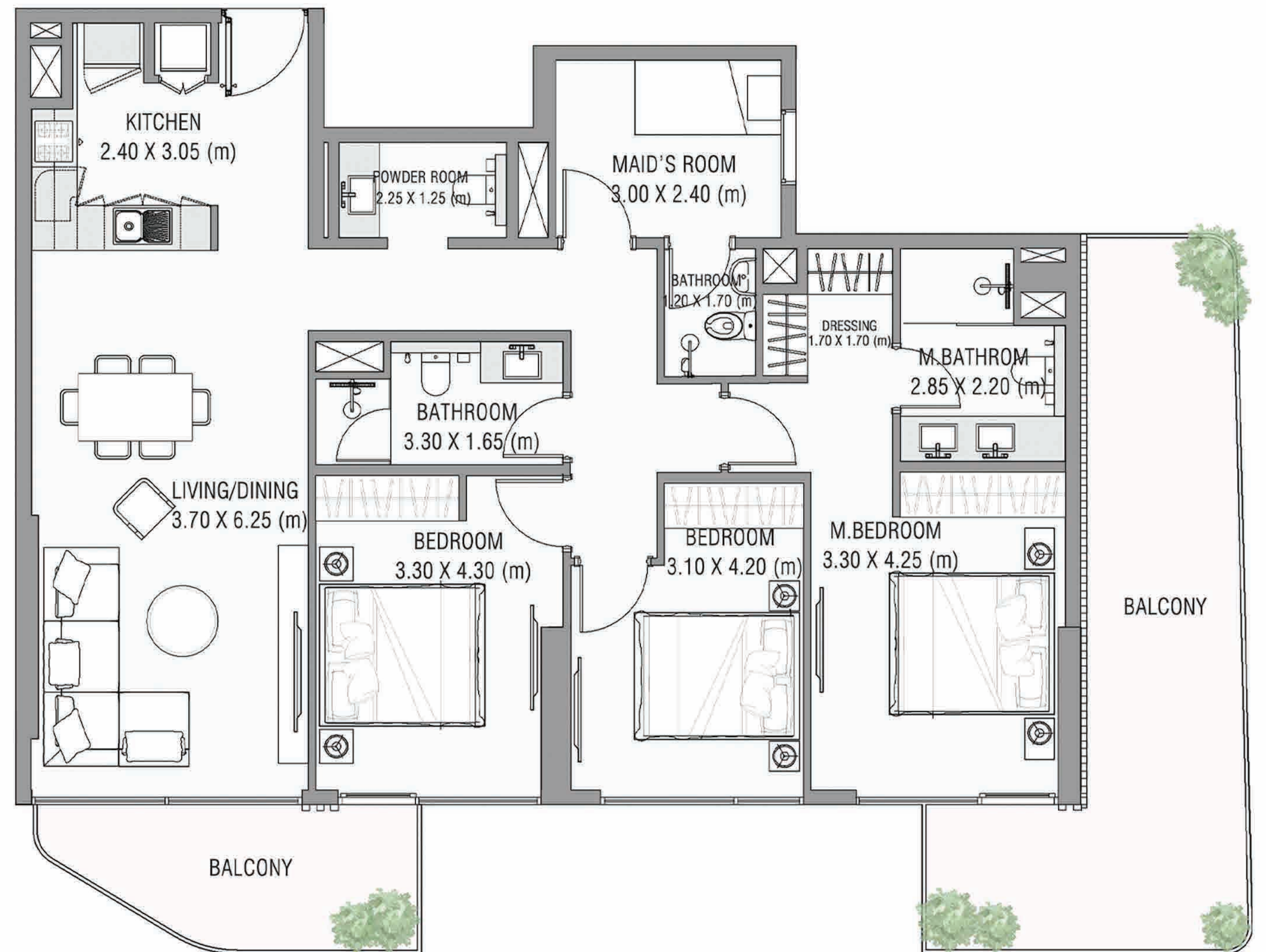
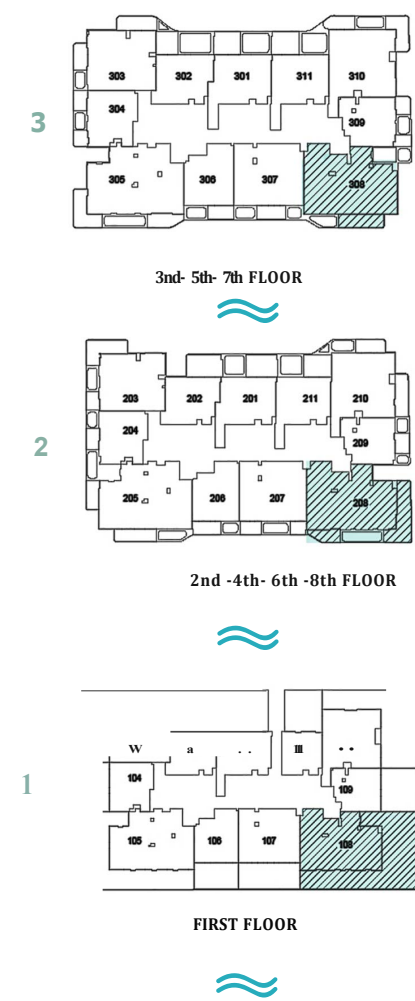
First Floor	SQM	SQF
Suite Area	124.50	1340.11
Balcony Area	140.64	1513.84
Total Unit Area	265.14	2853.94

Floor (2,4,6,8)	SQM	SQF
Suite Area	125.75	1353.56
Balcony Area	34.74	373.94
Total Unit Area	160.49	1727.82

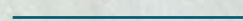
Floor (3,5,7)	SQM	SQF
Suite Area	125.83	1354.42
Balcony Area	13.72	147.68
Total Unit Area	139.55	1502.10

AYAMORE
RESIDENCE

Key Plan



THE INTERIORS

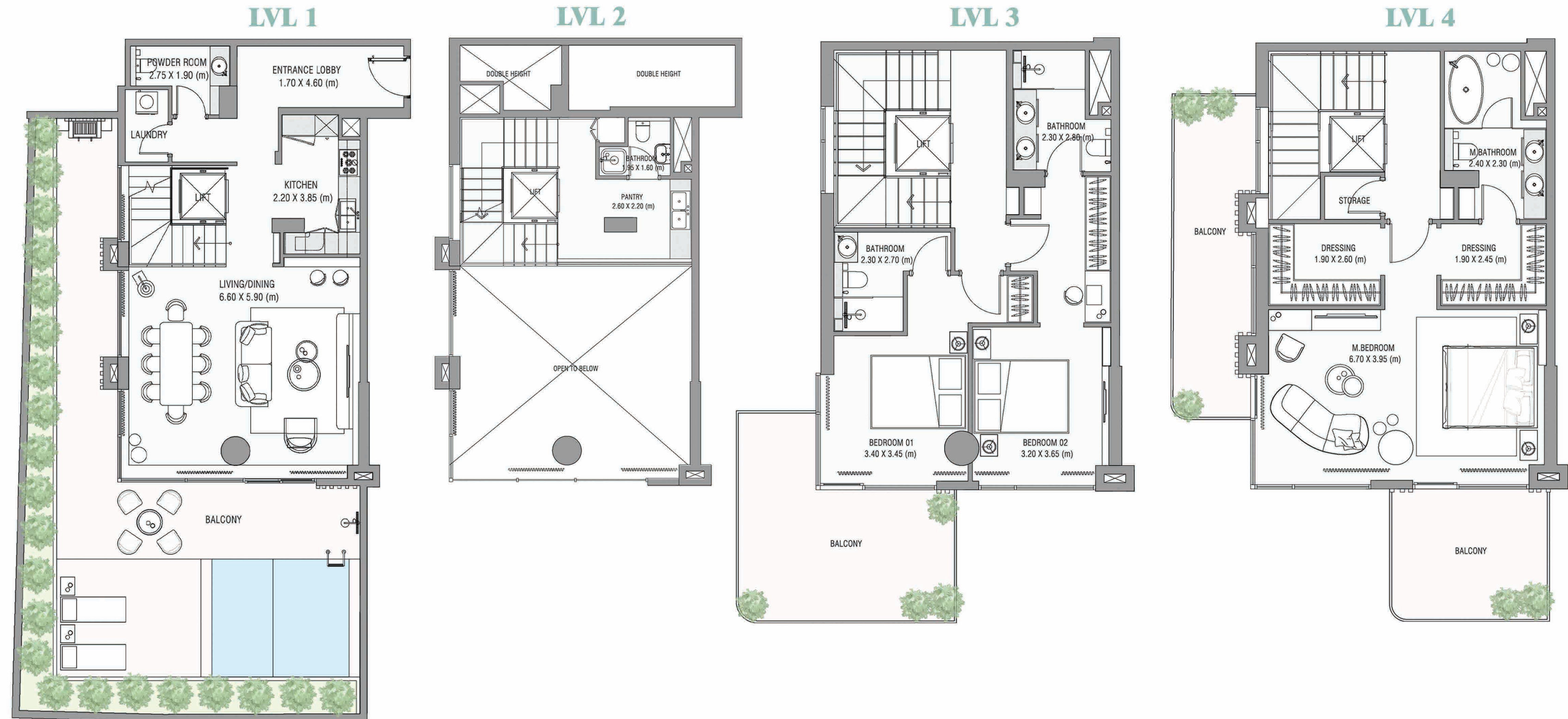
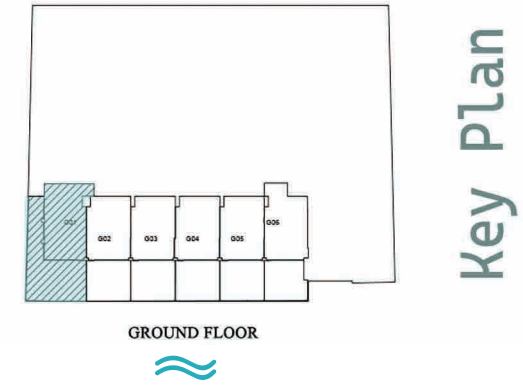


THE VILLAS

3 BEDROOM VILLA TYPE A | 01

Ground Floor	SQM	SQF
Suite Area	249.63	2686.99
Balcony Area	132.96	1431.17
Total Unit Area	382.59	4118.16

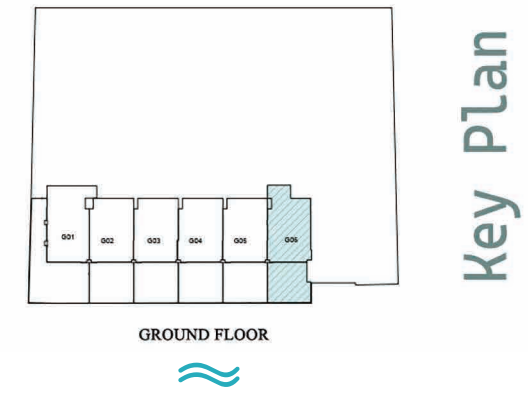
AYAMORE
RESIDENCE



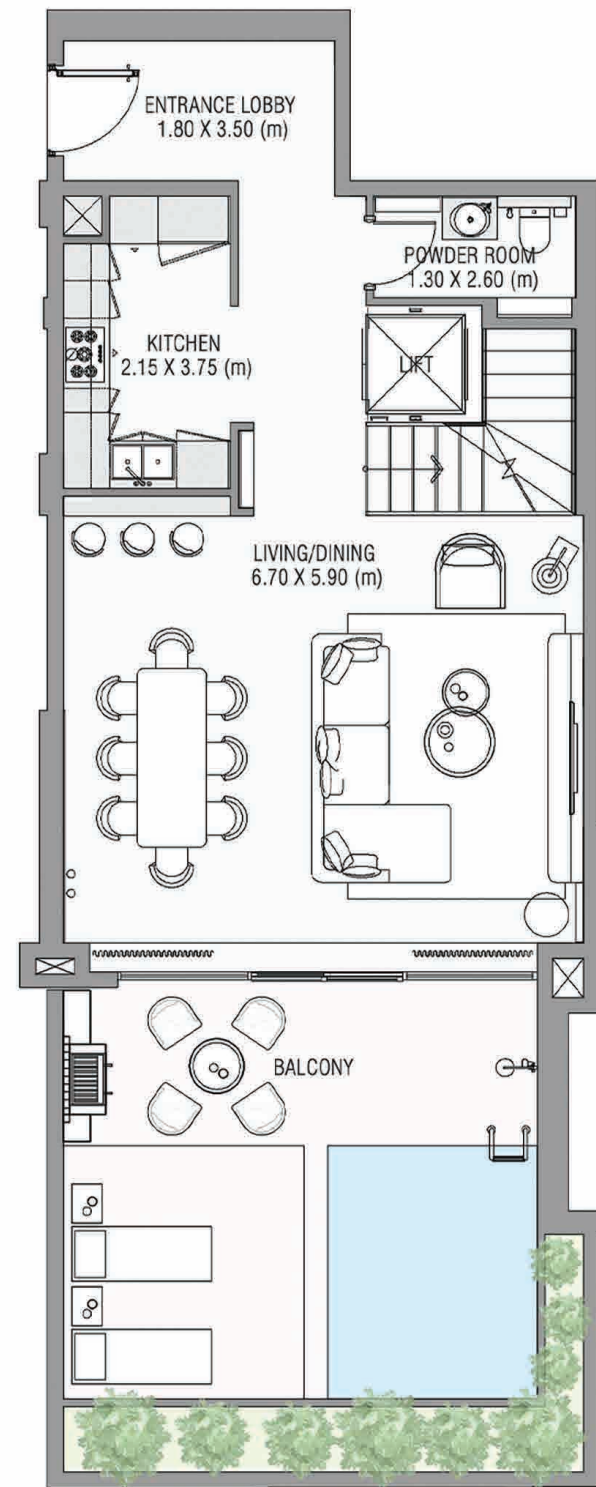
3 BEDROOM VILLA TYPE A1 | 06

Ground Floor	SQM	SQF
Suite Area	245.84	2646.20
Balcony Area	62.01	667.47
Total Unit Area	307.85	3313.67

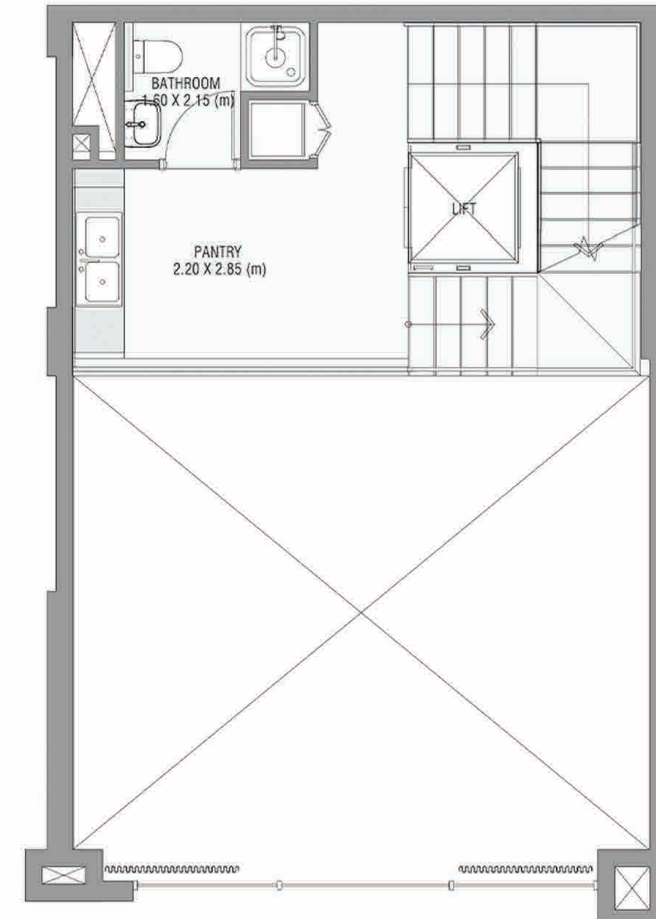
AYAMORE
RESIDENCE



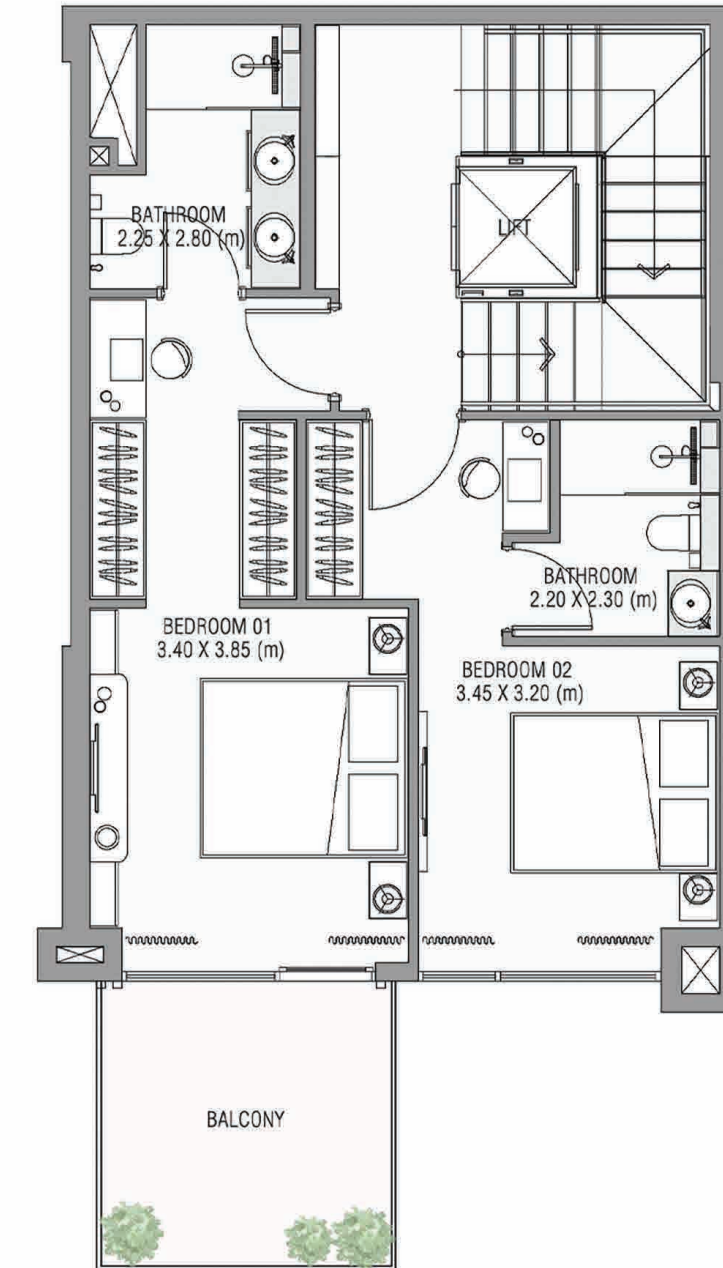
LVL 1



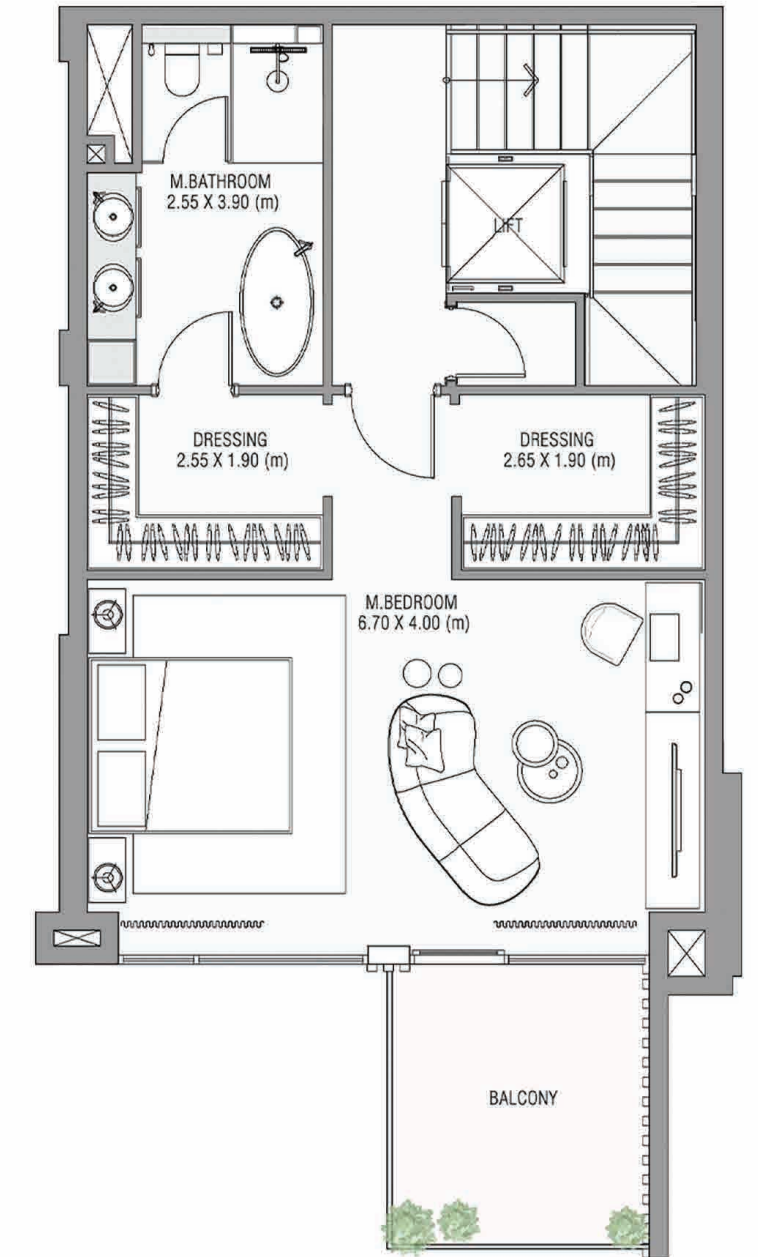
LVL 2



LVL 3



LVL 4



3 BEDROOM VILLA TYPE B | 02,03,04,05

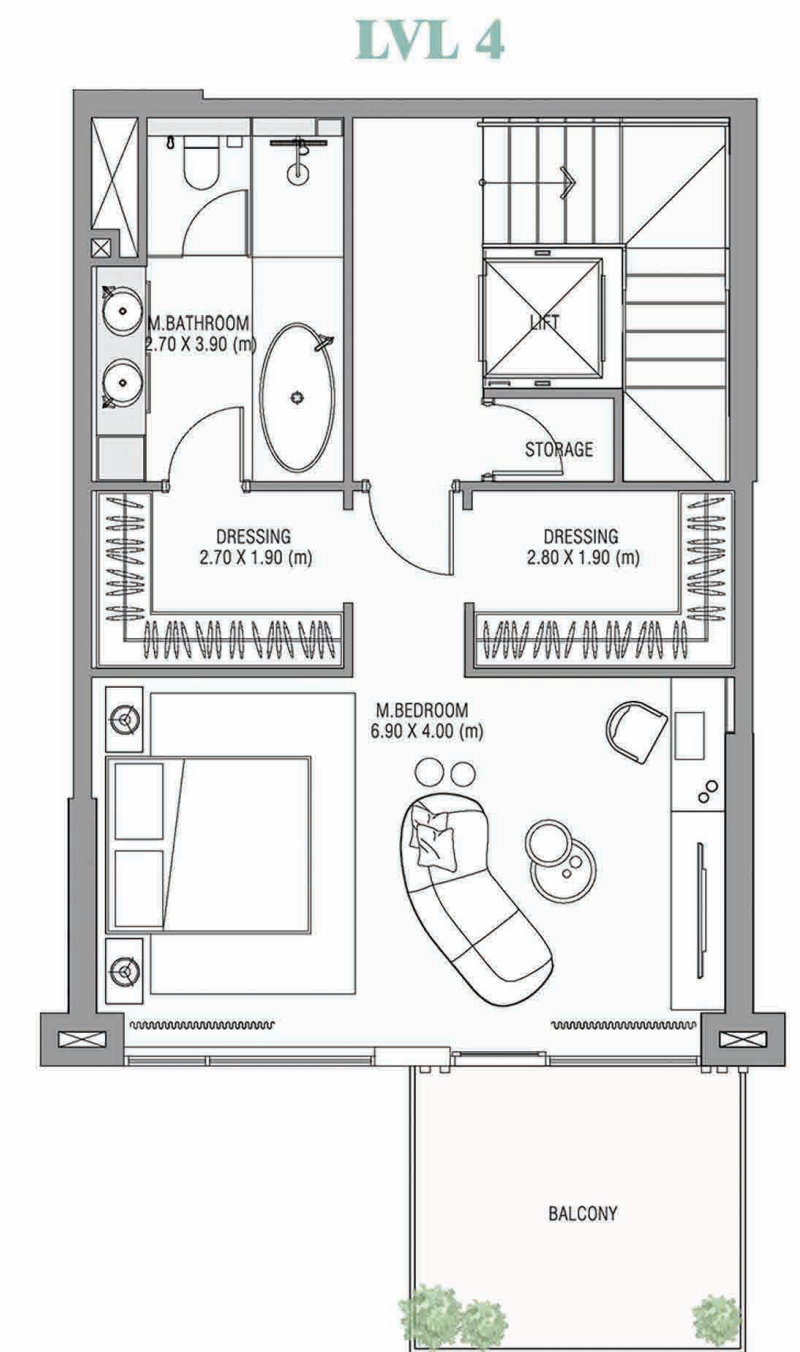
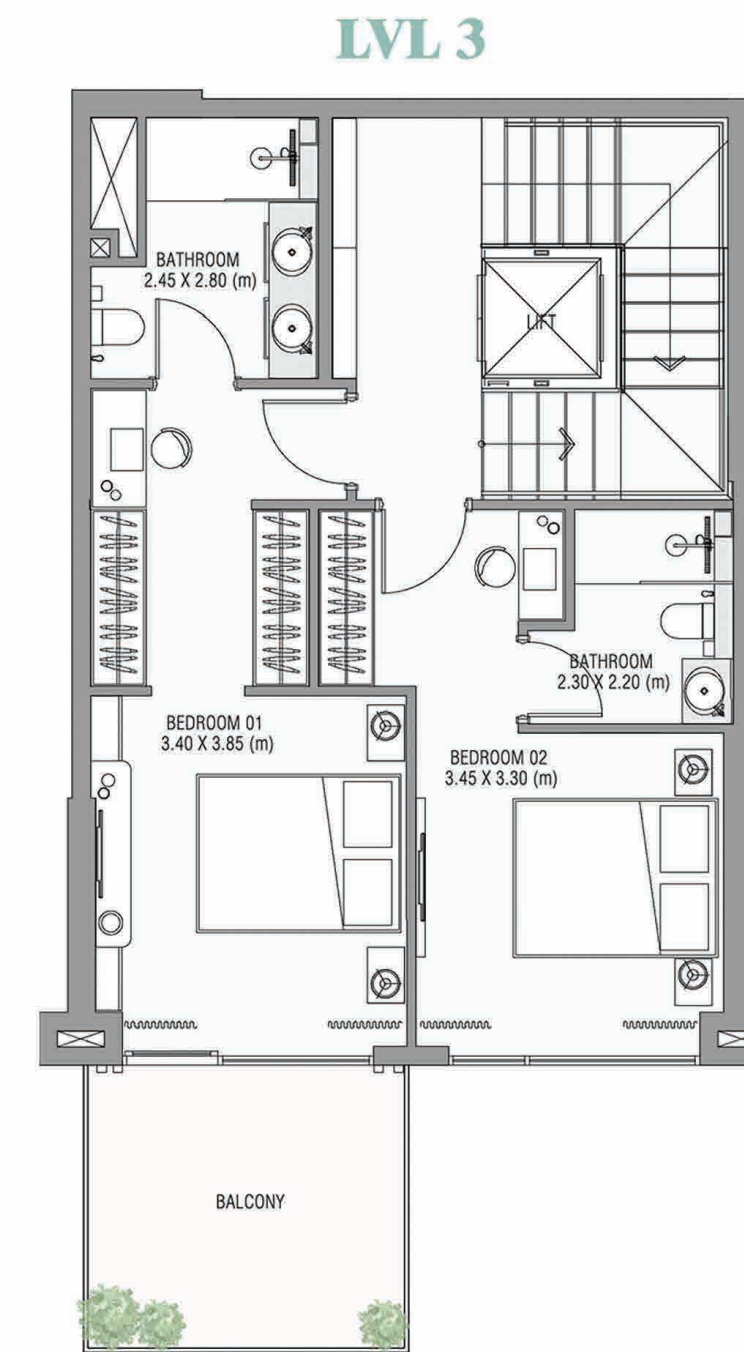
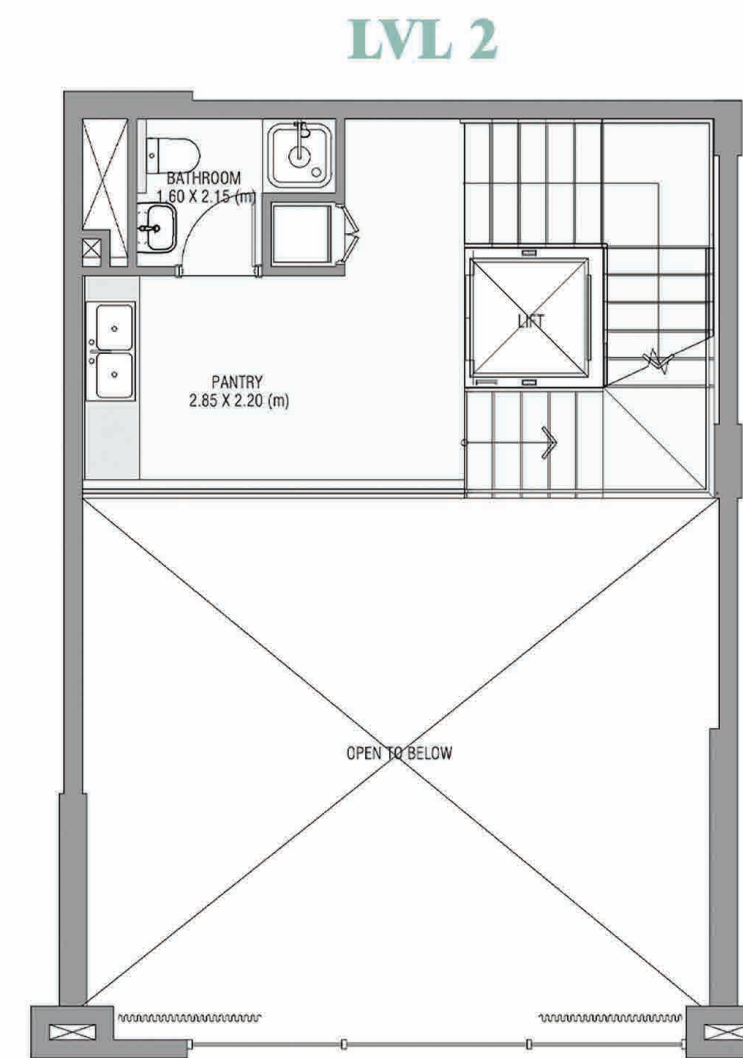
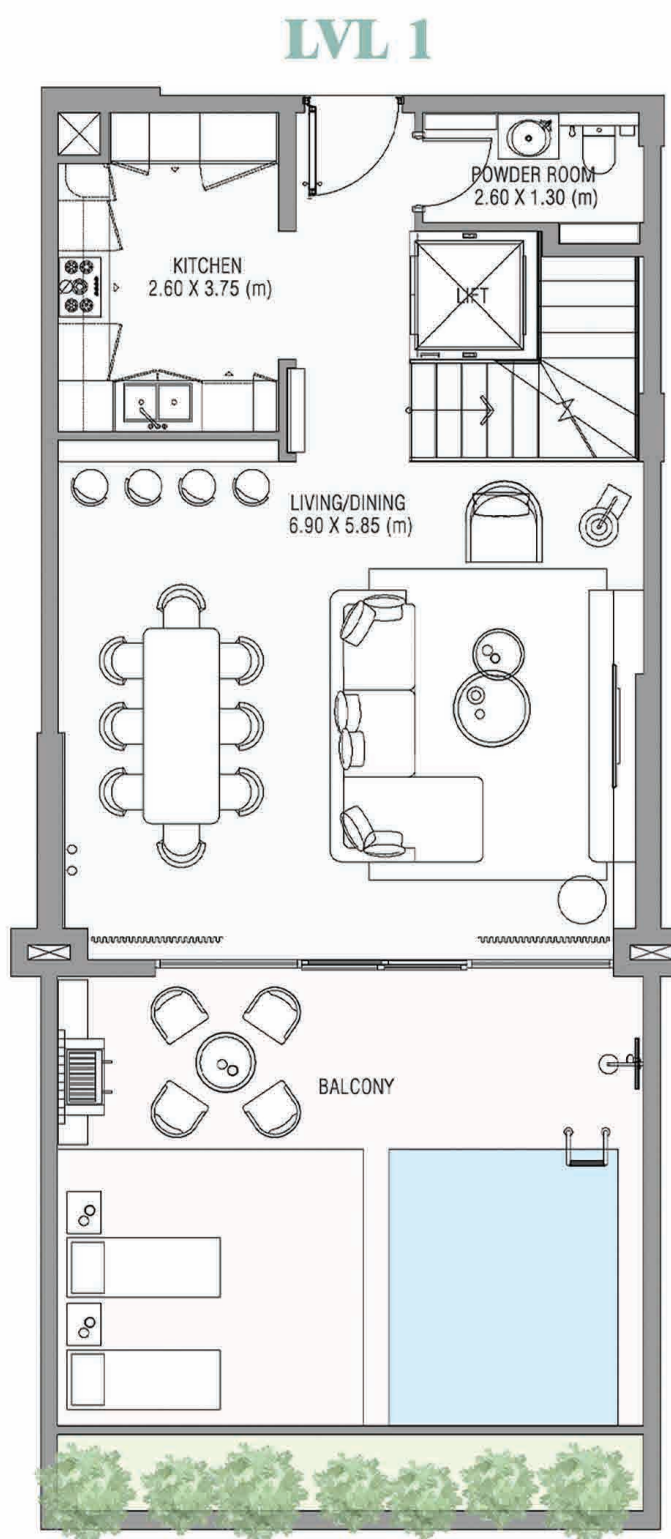
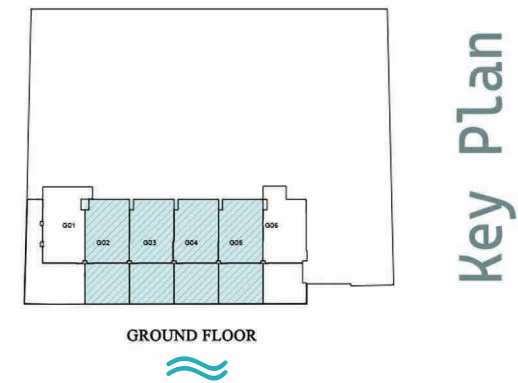
Ground Floor (02)	SQM	SQF
Suite Area	243.37	2619.61
Balcony Area	68.41	736.36
Total Unit Area	311.78	3355.97

Ground Floor (03)	SQM	SQF
Suite Area	243.48	2629.80
Balcony Area	68.32	735.39
Total Unit Area	311.80	3356.19

Ground Floor (04)	SQM	SQF
Suite Area	244.38	2630.48
Balcony Area	68.14	733.45
Total Unit Area	312.52	3363.94

Ground Floor (05)	SQM	SQF
Suite Area	243.61	2622.20
Balcony Area	68.32	735.39
Total Unit Area	311.93	3357.59

AYAMORE
RESIDENCE



AYAMORE

R E S I D E N C E

INFO@AYATGROUP.AE

OFFICE 129, IRIDIUM BUILDING, BARSHA 1, DUBAI, UAE

AYATDEVELOPMENT.COM/AYAMORE

800 AYAT

This publication is intended for illustrative purposes only. Some images included in this document were created using computer graphics technology (photorealistic rendering) to depict details of façades, elevations, common areas, private spaces, and apartment interiors, solely to present potential future designs and/or customisable solutions. All furniture and artwork featured are shown purely for marketing and rendering purposes. As such, all information, descriptions, and images are indicative and subject to change. This document does not hold contractual value and is not binding on the investment company owning the rights and information presented. Reproduction or partial use of the texts and images is prohibited without prior authorisation.

AYAMORE

R E S I D E N C E