



Quietly Iconic.  
*Purposefully Boutique.*

# Capital Horizon

TERRACES

DUBAI ISLANDS

**Floor Plans**

CIRRERA

— DEVELOPMENT —



## Our Vision

Cirrera exists to reimagine modern living through beautifully engineered spaces where intelligent design, refined aesthetics, and enduring quality come together to enhance how people live, today and for decades to come.



## Our Difference

Through proprietary technical solutions, Cirrera can deliver up to 12% more usable internal space than comparable developments; a feat of engineering that is both felt and measured. This is space, reengineered to work harder and feel better.



# Driven to Create

## *Designed to Inspire*

Every Cirrera project starts with a blank canvas and a clear point of view: design with intelligence, build with precision, and create spaces that feel as good as they look.



Expansive 3.2 m windows bring in sunlight and panoramic views



Fully furnished and equipped kitchen



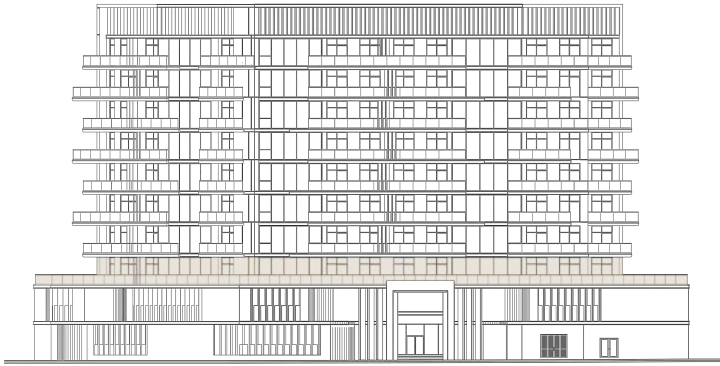
Interior space optimised for comfort and value



Health & Wellness: Gym, Yoga Area, Sauna & Pool

Apartments with 1, 2 or 3 bedrooms from AED 1,700,000

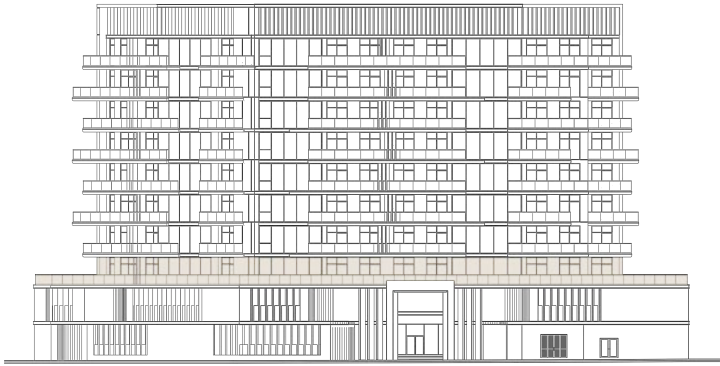




## Apartment 101 1st Floor

Area	sqf	sqm	%
Internal	703	65,3	44%
Terrace	907	84,3	56%
<b>TOTAL AREA</b>	<b>1.610</b>	<b>149,6</b>	

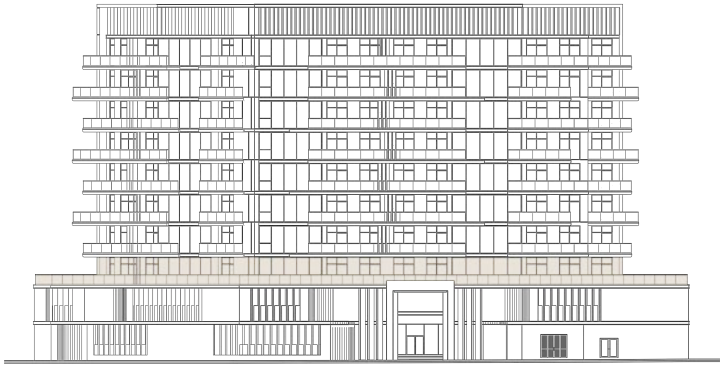




## Apartment 102 1st Floor

Area	sqf	sqm	%
Internal	1.387	128,8	35%
Terrace	2.600	241,6	65%
<b>TOTAL AREA</b>	<b>3.987</b>	<b>370,4</b>	

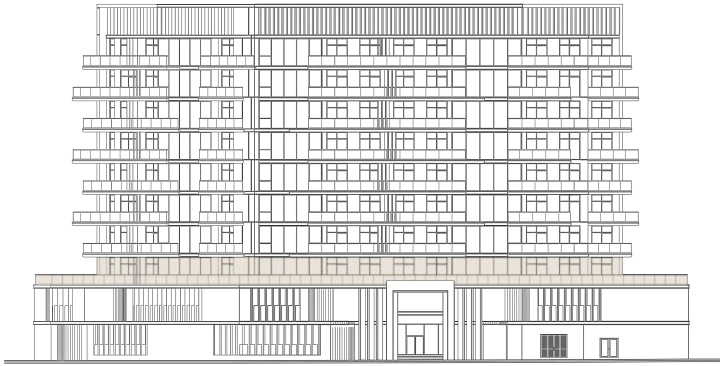




## Apartment 103 1st Floor

Area	sqf	sqm	%
Internal	1.102	102,4	56%
Terrace	867	80,5	44%
<b>TOTAL AREA</b>	<b>1.969</b>	<b>182,9</b>	

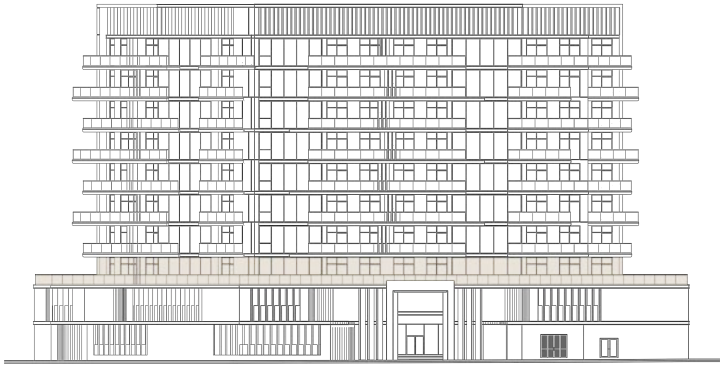




## Apartment 104 - 105 - 106 1st Floor

Area	sqf	sqm	%
Internal	1.093	101,5	62%
Terrace	695	64,6	38%
<b>TOTAL AREA</b>	<b>1.788</b>	<b>166,1</b>	

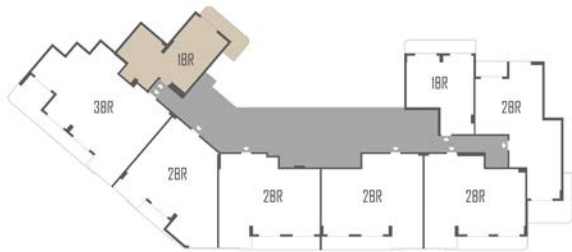




## Apartment 107 1st Floor

Area	sqf	sqm	%
Internal	1.438	133,6	37%
Terrace	2.500	232,3	63%
<b>TOTAL AREA</b>	<b>3.938</b>	<b>365,9</b>	

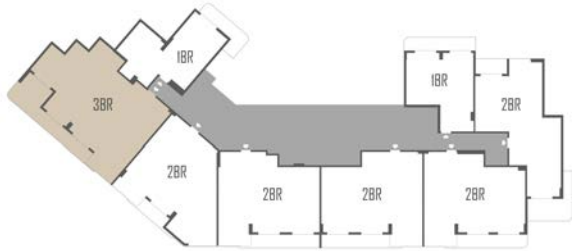




## Apartment 201-401-601-801 Floor 2, 4, 6, 8

Area	sqf	sqm	%
Internal	703	65,3	82%
Terrace	153	14,2	18%
<b>TOTAL AREA</b>	<b>856</b>	<b>79,5</b>	

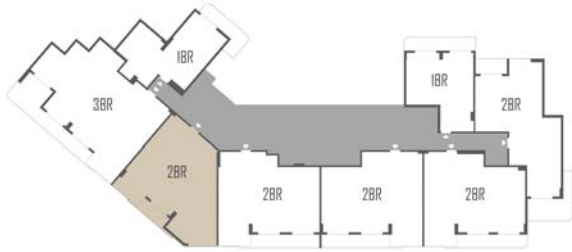




Apartment 202-402-602-802  
Floor 2, 4, 6, 8

Area	sqf	sqm	%
Internal	1.387	128,8	83%
Terrace	293	27,2	17%
<b>TOTAL AREA</b>	<b>1.680</b>	<b>156,0</b>	

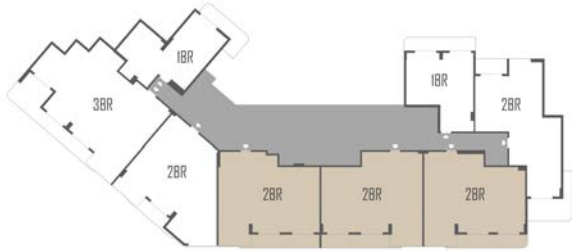




Apartment 203-403-603-803  
Floor 2, 4, 6, 8

Area	sqf	sqm	%
Internal	1.102	102,4	94%
Terrace	71	6,6	6%
<b>TOTAL AREA</b>	<b>1.173</b>	<b>109,0</b>	



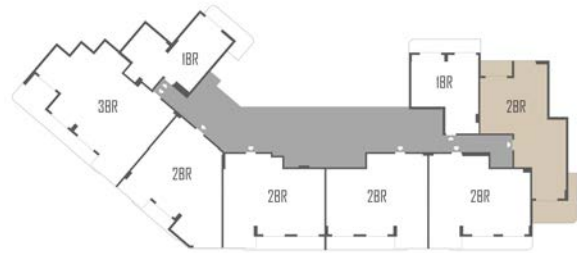


## Apartment 204-205-206

404-405-406 / 604-605-606 / 804-805-806

Floor 2, 4, 6, 8

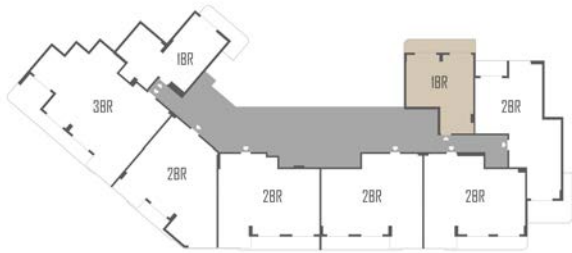
Area	sqf	sqm	%
Internal	1.093	101,5	89%
Terrace	134	12,5	11%
<b>TOTAL AREA</b>	<b>1.227</b>	<b>114,0</b>	



## Apartment 207-407-607-807 Floor 2, 4, 6, 8

Area	sqf	sqm	%
Internal	1.025	95,2	81%
Terrace	248	23,0	19%
<b>TOTAL AREA</b>	<b>1.273</b>	<b>118,2</b>	

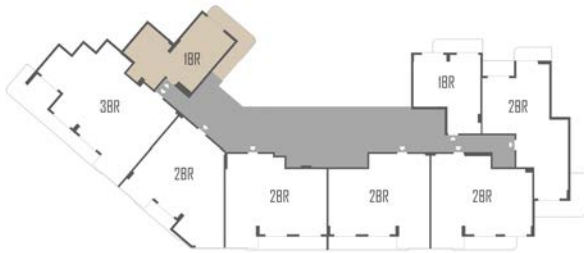




Apartment 208-408-608-808  
Floor 2, 4, 6, 8

Area	sqf	sqm	%
Internal	603	56,0	86%
Terrace	94	8,7	14%
<b>TOTAL AREA</b>	<b>697</b>	<b>64,7</b>	

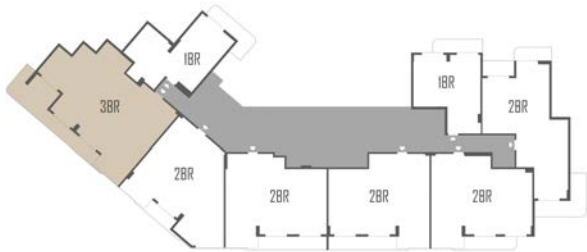




## Apartment 301-501-701 Floor 3, 4, 7

Area	sqf	sqm	%
Internal	703	65,3	80%
Terrace	177	16,5	20%
<b>TOTAL AREA</b>	<b>880</b>	<b>81,8</b>	





Apartment 302-502-702  
Floor 3, 5, 7

Area	sqf	sqm	%
Internal	1.387	128,8	80%
Terrace	344	32,0	20%
<b>TOTAL AREA</b>	<b>1.731</b>	<b>160,8</b>	

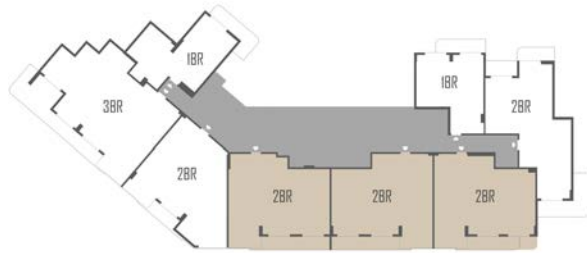




## Apartment 303-503-703 Floor 3, 5, 7

Area	sqf	sqm	%
Internal	1.102	102,4	94%
Terrace	71	6,6	6%
<b>TOTAL AREA</b>	<b>1.173</b>	<b>109,0</b>	





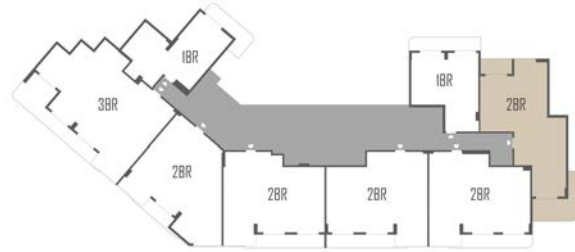
## Apartment 304-305-306

504-505-506 / 704-705-706

Floor 3, 5, 7

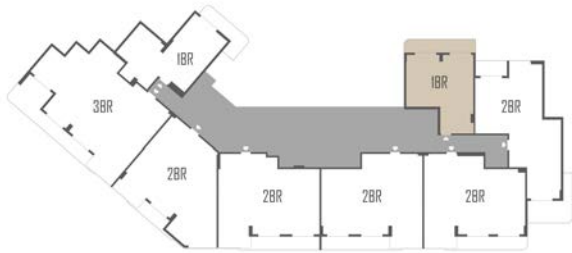
Area	sqf	sqm	%
Internal	1.092	101,4	92%
Terrace	142	13,2	8%
<b>TOTAL AREA</b>	<b>1.234</b>	<b>114,6</b>	





## Apartment 307-507-707 Floor 3, 5, 7

Area	sqf	sqm	%
Internal	1.025	95,2	81%
Terrace	250	23,2	19%
<b>TOTAL AREA</b>	<b>1.275</b>	<b>118,5</b>	



## Apartment 308-508-708 Floor 3, 5, 7

Area	sqf	sqm	%
Internal	603	56,0	82%
Terrace	134	12,5	18%
<b>TOTAL AREA</b>	<b>737</b>	<b>68,5</b>	





## Our Location

**5-10 minutes:**

Dubai Canal / Gold Souq Metro Station / Port Rashid

**10-15 minutes:**

Sheikh Zayed Road / Dubai Greek / Deira

**15-20 minutes:**

Dubai International airport / JBR The Walk/ Al Mamzar Beach Park

**20-25 minutes:**

Downtown Dubai / Dubai World Trade Centre / Dubai Gold Souq

**25 - 30 minutes:**

Business Bay / Dubai Financial Centre





We'd love to hear  
from you  
*Get in touch*

Contact: +971 54 511 6600  
E-mail: [Info@cirrera.com](mailto:Info@cirrera.com)

Address : Bay Square, Building 2,  
Floor 1, Office 101, Dubai, UAE.  
[www.cirrera.com](http://www.cirrera.com)





# CIRRERA

— DEVELOPMENT —

Interior spaces at Capital Horizon Terraces  
have been proudly designed by:

**OCKHOME**  
HOME COLLECTION