



GRAND POLO  
CLUB & RESORT

# EQUESTRA

---

FLOORPLANS

EMAAR

## FACADE STYLE ( TYPE E )

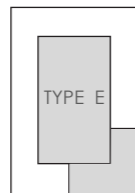
---

# EQUESTRA

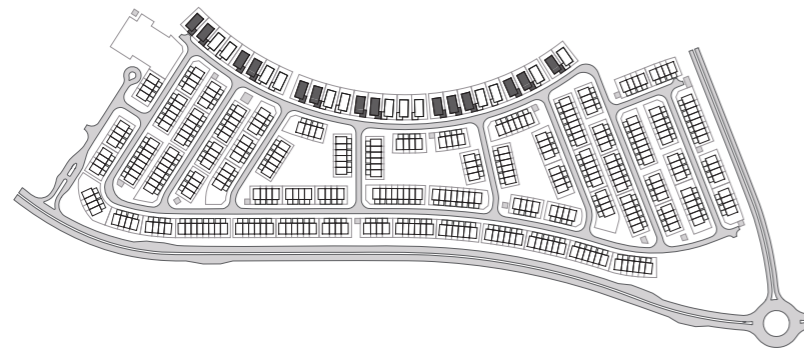
Grand Polo Club & Resort

## 5 BEDROOM STYLE E

SUITE AREA	3910.53 SQFT	363.30 SQM
GARAGE AREA	549.39 SQFT	51.04 SQM
BALCONY/TERRACE AREA	579.85 SQFT	53.87 SQM
<b>TOTAL AREA</b>	<b>5039.77 SQFT</b>	<b>468.21 SQM</b>



### KEY PLAN



GROUND FLOOR



FIRST FLOOR



SECOND FLOOR

FLOOR PLAN 1. All dimensions are in imperial and metric, and measured from finish to finish excluding construction tolerances. 2. All materials, dimensions, and drawings are approximate only. 3. Information is subject to change without notice, at developer's absolute discretion. 4. Actual area may vary from the stated area. 5. Drawings not to scale. 6. All images used are for illustrative purposes only and do not represent the actual size, features, specifications, fittings, and furnishings. 7. The developer reserves the right to make revisions / alterations, at it's absolute discretion, without any liability whatsoever.

FACADE STYLE ( TYPE F )

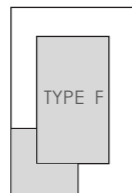
---

# EQUESTRA

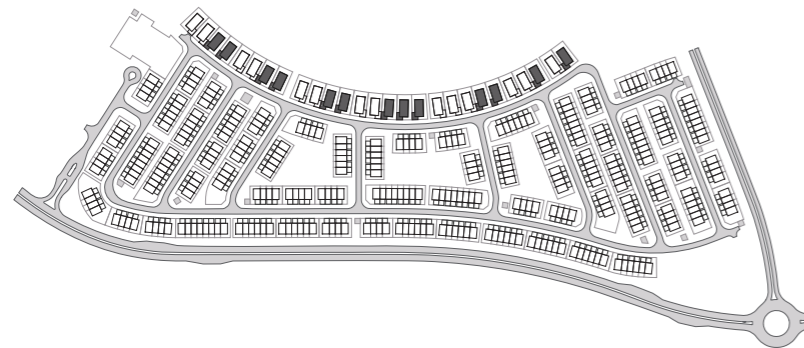
Grand Polo Club & Resort

## 5 BEDROOM STYLE F

SUITE AREA	3910.53 SQFT	363.30 SQM
GARAGE AREA	547.24 SQFT	50.84 SQM
BALCONY/TERRACE AREA	597.61 SQFT	55.52 SQM
<b>TOTAL AREA</b>	<b>5055.38 SQFT</b>	<b>469.66 SQM</b>



### KEY PLAN



GROUND FLOOR



FIRST FLOOR



SECOND FLOOR

FLOOR PLAN 1. All dimensions are in imperial and metric, and measured from finish to finish excluding construction tolerances. 2. All materials, dimensions, and drawings are approximate only. 3. Information is subject to change without notice, at developer's absolute discretion. 4. Actual area may vary from the stated area. 5. Drawings not to scale. 6. All images used are for illustrative purposes only and do not represent the actual size, features, specifications, fittings, and furnishings. 7. The developer reserves the right to make revisions / alterations, at it's absolute discretion, without any liability whatsoever.

## FACADE STYLE (TYPE A)

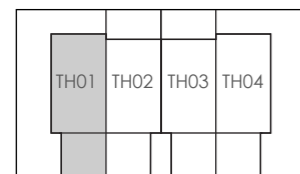
---

# EQUESTRA

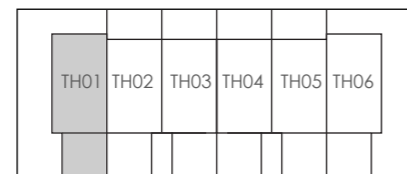
Grand Polo Club & Resort

## 4 BEDROOM STYLE A

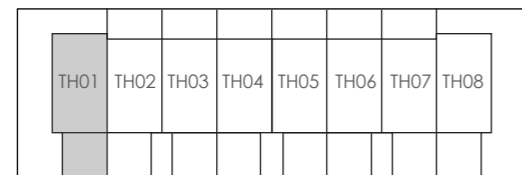
SUITE AREA	1985.64 SQFT	184.50 SQM
GARAGE AREA	377.49 SQFT	35.07 SQM
BALCONY/TERRACE AREA	96.76 SQFT	8.99 SQM
<b>TOTAL AREA</b>	<b>2460.19 SQFT</b>	<b>228.56 SQM</b>



4 PLEX

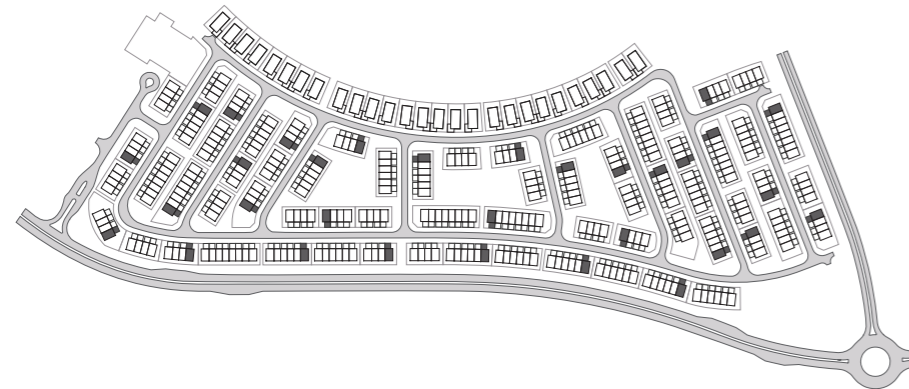


6 PLEX



8 PLEX

### KEY PLAN



GROUND FLOOR



FIRST FLOOR

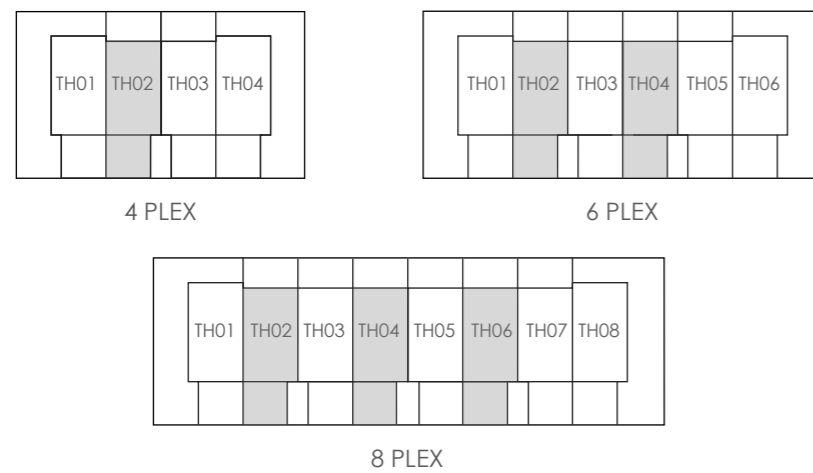
FLOOR PLAN 1. All dimensions are in imperial and metric, and measured from finish to finish excluding construction tolerances. 2. All materials, dimensions, and drawings are approximate only. 3. Information is subject to change without notice, at developer's absolute discretion. 4. Actual area may vary from the stated area. 5. Drawings not to scale. 6. All images used are for illustrative purposes only and do not represent the actual size, features, specifications, fittings, and furnishings. 7. The developer reserves the right to make revisions / alterations, at it's absolute discretion, without any liability whatsoever.

# EQUESTRA

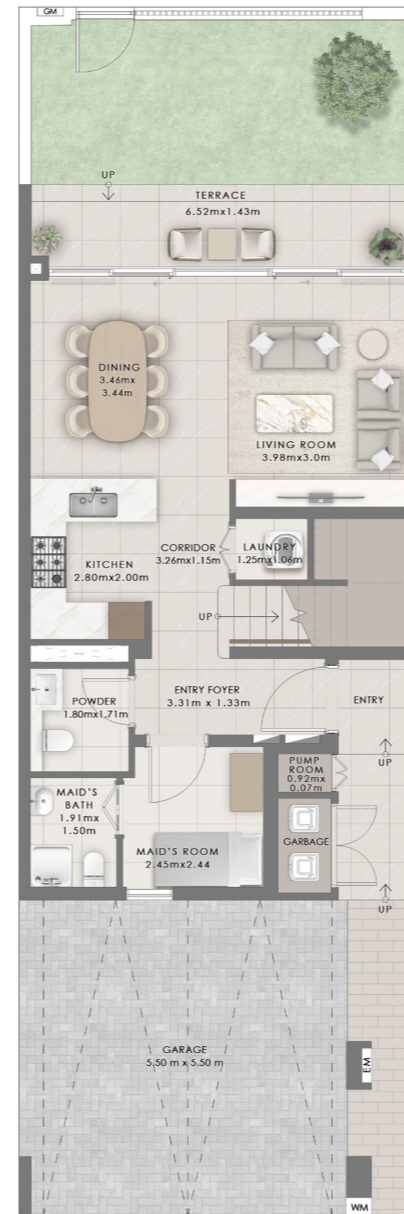
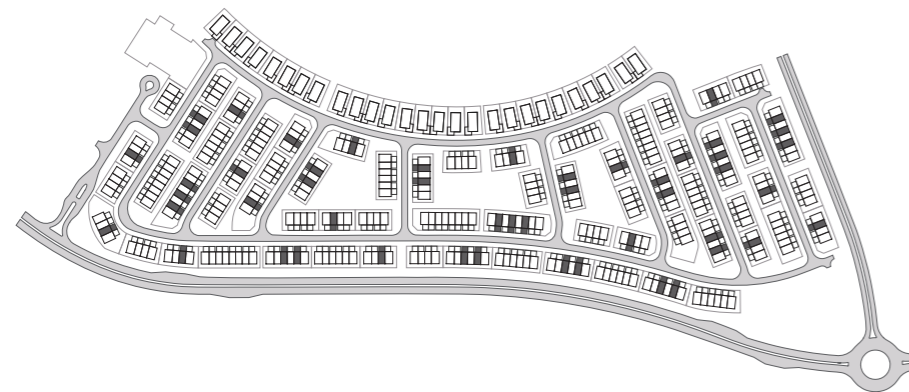
Grand Polo Club & Resort

## 3 BEDROOM STYLE A

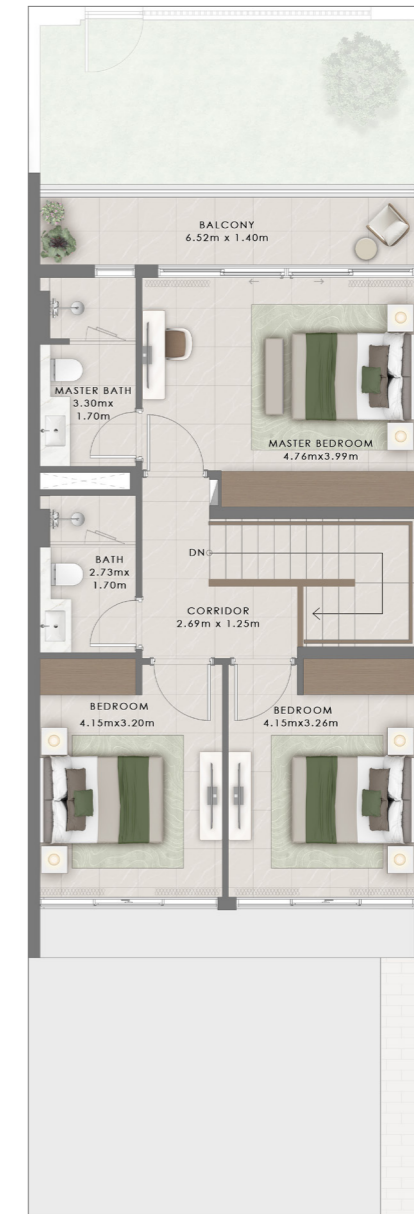
SUITE AREA	1559.37 SQFT	144.87 SQM
GARAGE AREA	353.92 SQFT	32.88 SQM
BALCONY/TERRACE AREA	266.95 SQFT	24.80 SQM
<b>TOTAL AREA</b>	<b>2180.24 SQFT</b>	<b>202.55 SQM</b>



### KEY PLAN



GROUND FLOOR



FIRST FLOOR

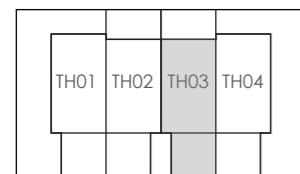
FLOOR PLAN 1. All dimensions are in imperial and metric, and measured from finish to finish excluding construction tolerances. 2. All materials, dimensions, and drawings are approximate only. 3. Information is subject to change without notice, at developer's absolute discretion. 4. Actual area may vary from the stated area. 5. Drawings not to scale. 6. All images used are for illustrative purposes only and do not represent the actual size, features, specifications, fittings, and furnishings. 7. The developer reserves the right to make revisions / alterations, at it's absolute discretion, without any liability whatsoever.

# EQUESTRA

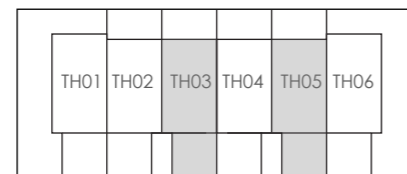
Grand Polo Club & Resort

## 3 BEDROOM STYLE A

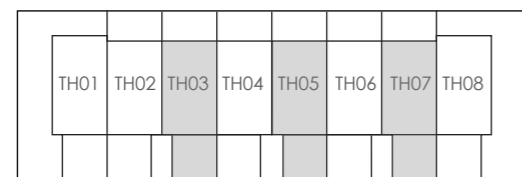
SUITE AREA	1559.37 SQFT	144.87 SQM
GARAGE AREA	353.92 SQFT	32.88 SQM
BALCONY/TERRACE AREA	266.95 SQFT	24.80 SQM
<b>TOTAL AREA</b>	<b>2180.24 SQFT</b>	<b>202.55 SQM</b>



4 PLEX

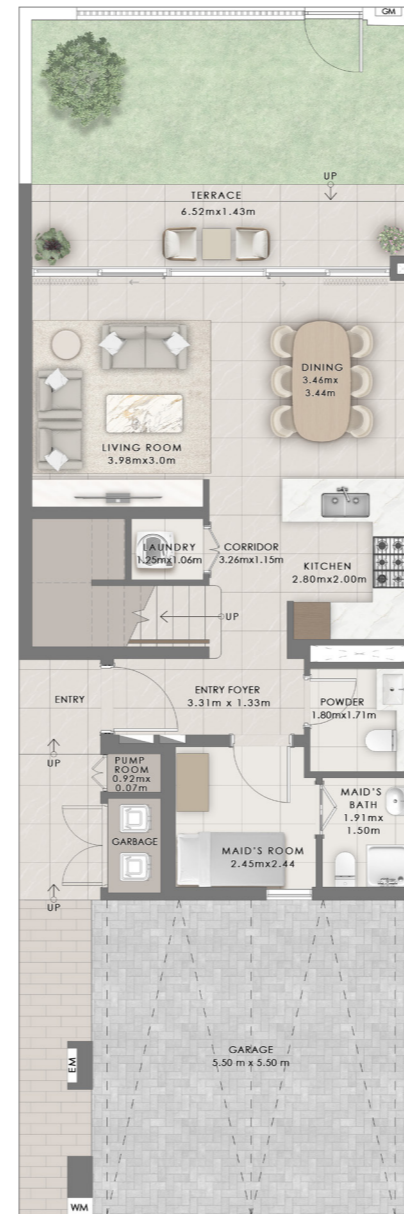
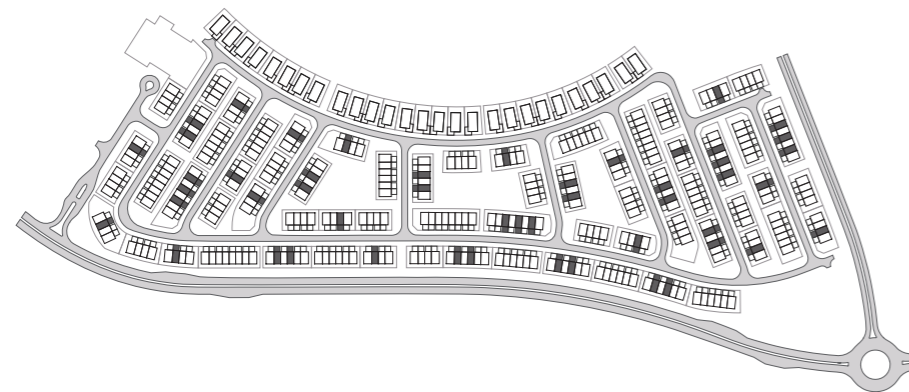


6 PLEX

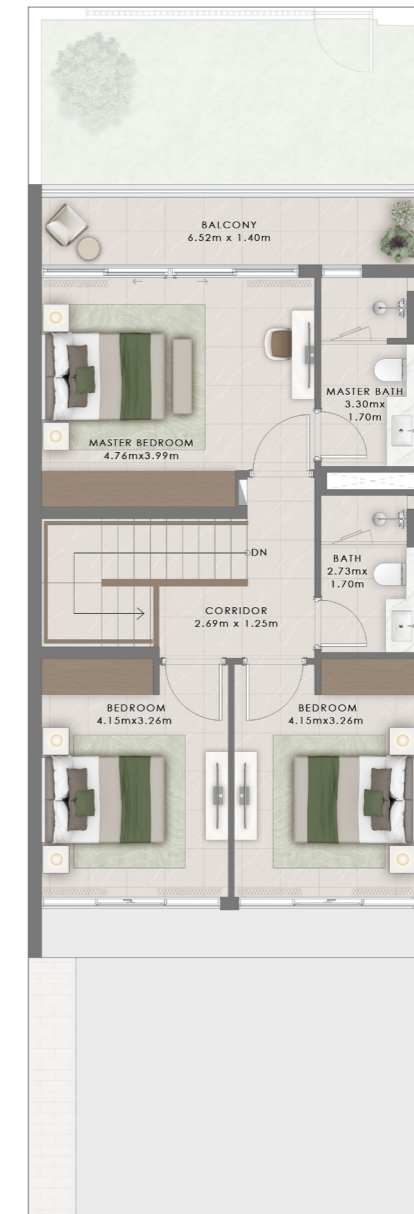


8 PLEX

### KEY PLAN



GROUND FLOOR



FIRST FLOOR

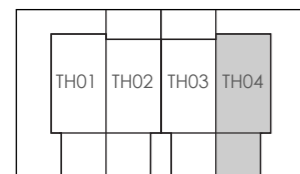
FLOOR PLAN 1. All dimensions are in imperial and metric, and measured from finish to finish excluding construction tolerances. 2. All materials, dimensions, and drawings are approximate only. 3. Information is subject to change without notice, at developer's absolute discretion. 4. Actual area may vary from the stated area. 5. Drawings not to scale. 6. All images used are for illustrative purposes only and do not represent the actual size, features, specifications, fittings, and furnishings. 7. The developer reserves the right to make revisions / alterations, at it's absolute discretion, without any liability whatsoever.

# EQUESTRA

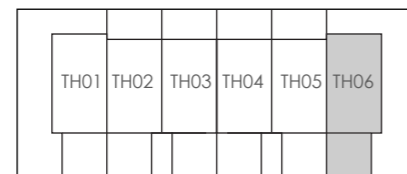
Grand Polo Club & Resort

## 4 BEDROOM STYLE A

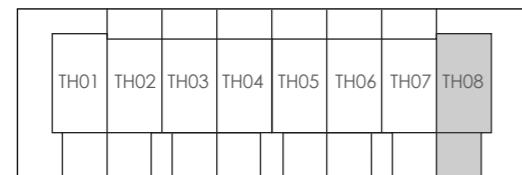
SUITE AREA	1985.64 SQFT	184.50 SQM
GARAGE AREA	377.49 SQFT	35.07 SQM
BALCONY/TERRACE AREA	96.76 SQFT	8.99 SQM
<b>TOTAL AREA</b>	<b>2460.19 SQFT</b>	<b>228.56 SQM</b>



4 PLEX

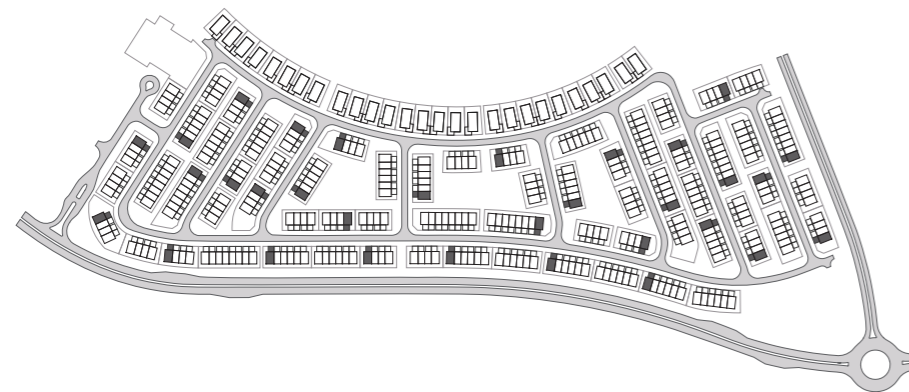


6 PLEX



8 PLEX

### KEY PLAN



GROUND FLOOR



FIRST FLOOR

FLOOR PLAN 1. All dimensions are in imperial and metric, and measured from finish to finish excluding construction tolerances. 2. All materials, dimensions, and drawings are approximate only. 3. Information is subject to change without notice, at developer's absolute discretion. 4. Actual area may vary from the stated area. 5. Drawings not to scale. 6. All images used are for illustrative purposes only and do not represent the actual size, features, specifications, fittings, and furnishings. 7. The developer reserves the right to make revisions / alterations, at it's absolute discretion, without any liability whatsoever.

## FACADE STYLE (TYPE C)

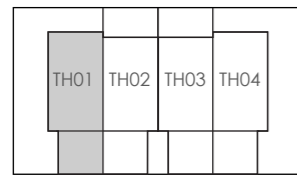
---

# EQUESTRA

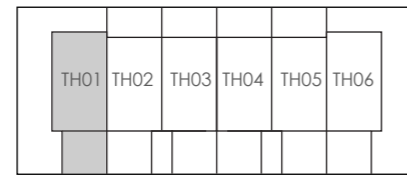
Grand Polo Club & Resort

## 4 BEDROOM STYLE C

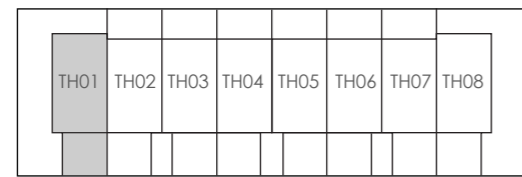
SUITE AREA	2008.66 SQFT	186.61 SQM
GARAGE AREA	377.60 SQFT	35.08 SQM
BALCONY/TERRACE AREA	96.44 SQFT	8.96 SQM
<b>TOTAL AREA</b>	<b>2482.70 SQFT</b>	<b>230.65 SQM</b>



4 PLEX

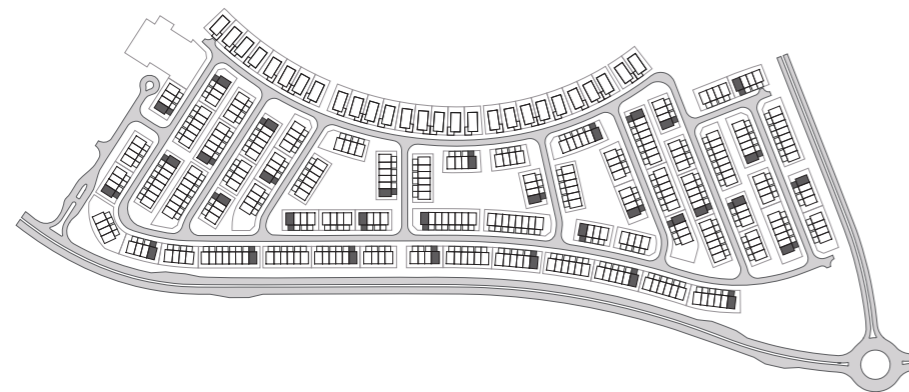


6 PLEX



8 PLEX

### KEY PLAN



GROUND FLOOR



FIRST FLOOR

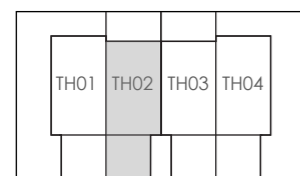
FLOOR PLAN 1. All dimensions are in imperial and metric, and measured from finish to finish excluding construction tolerances. 2. All materials, dimensions, and drawings are approximate only. 3. Information is subject to change without notice, at developer's absolute discretion. 4. Actual area may vary from the stated area. 5. Drawings not to scale. 6. All images used are for illustrative purposes only and do not represent the actual size, features, specifications, fittings, and furnishings. 7. The developer reserves the right to make revisions / alterations, at it's absolute discretion, without any liability whatsoever.

# EQUESTRA

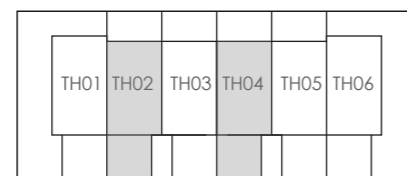
Grand Polo Club & Resort

## 3 BEDROOM STYLE C

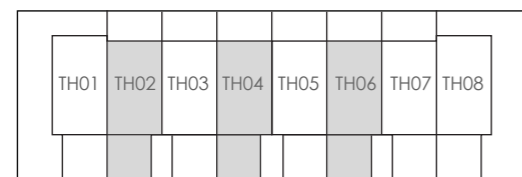
SUITE AREA	1556.89 SQFT	144.64 SQM
GARAGE AREA	353.92 SQFT	32.88 SQM
BALCONY/TERRACE AREA	260.27 SQFT	24.18 SQM
<b>TOTAL AREA</b>	<b>2171.08 SQFT</b>	<b>201.70 SQM</b>



4 PLEX

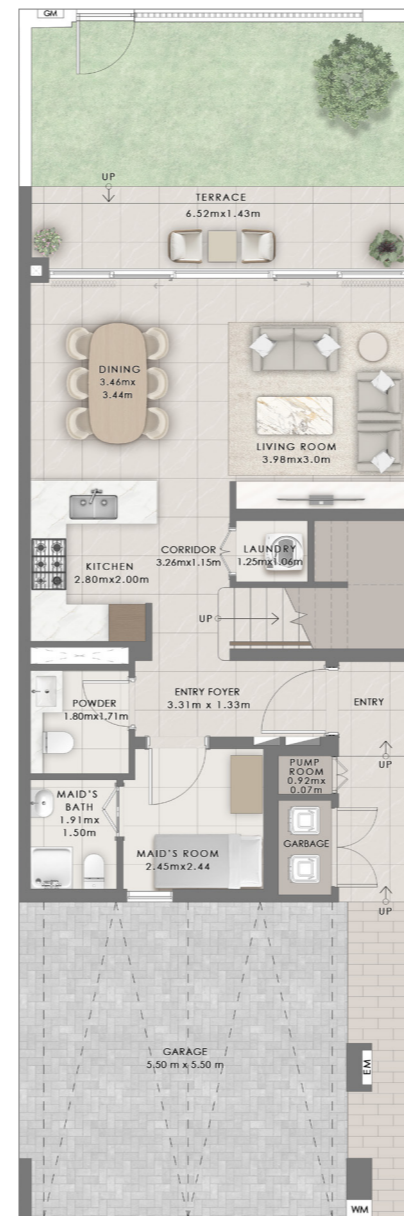
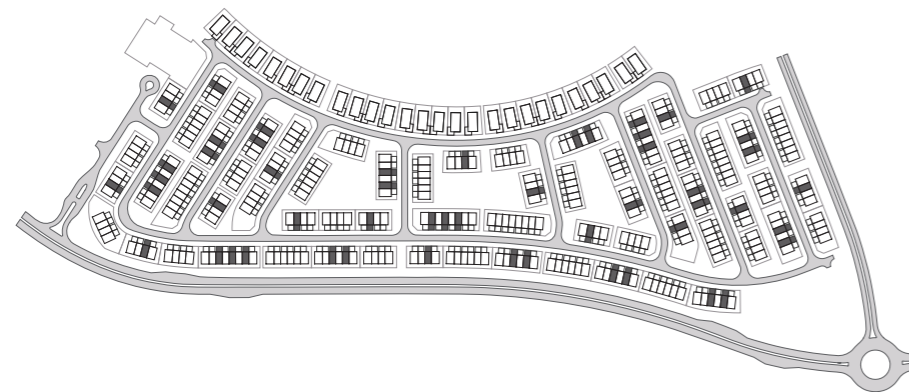


6 PLEX



8 PLEX

### KEY PLAN



GROUND FLOOR



FIRST FLOOR

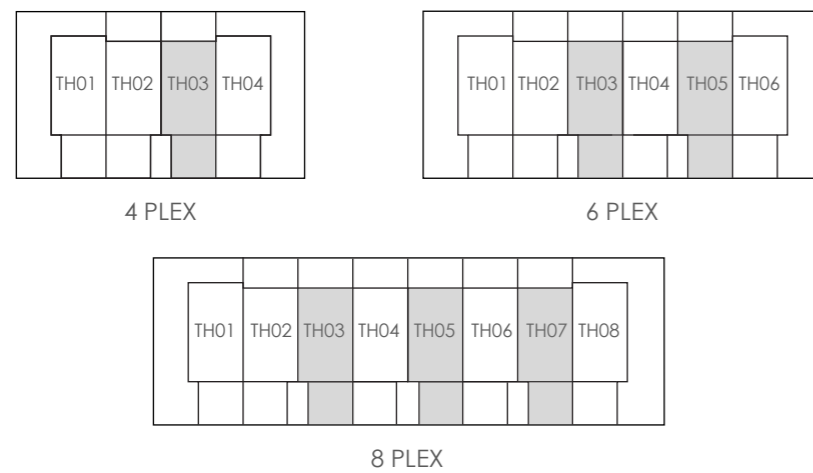
FLOOR PLAN 1. All dimensions are in imperial and metric, and measured from finish to finish excluding construction tolerances. 2. All materials, dimensions, and drawings are approximate only. 3. Information is subject to change without notice, at developer's absolute discretion. 4. Actual area may vary from the stated area. 5. Drawings not to scale. 6. All images used are for illustrative purposes only and do not represent the actual size, features, specifications, fittings, and furnishings. 7. The developer reserves the right to make revisions / alterations, at it's absolute discretion, without any liability whatsoever.

# EQUESTRA

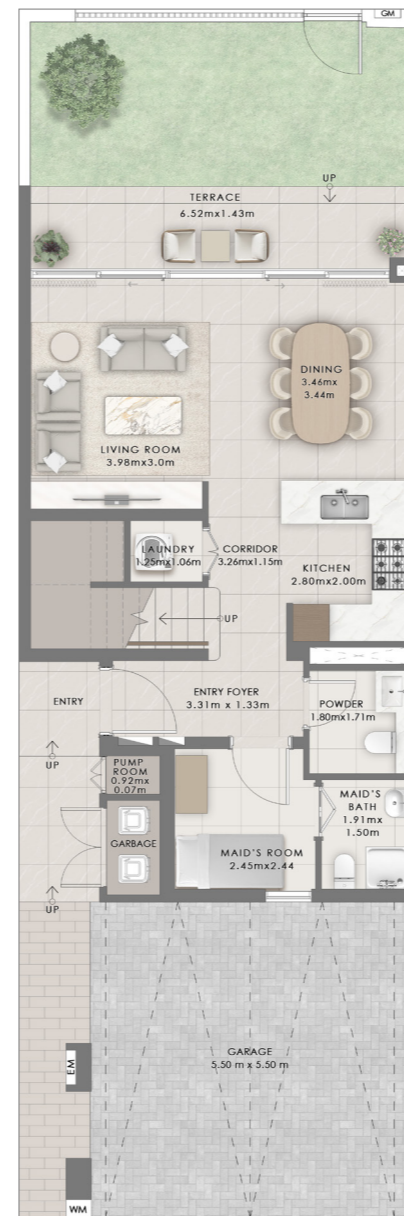
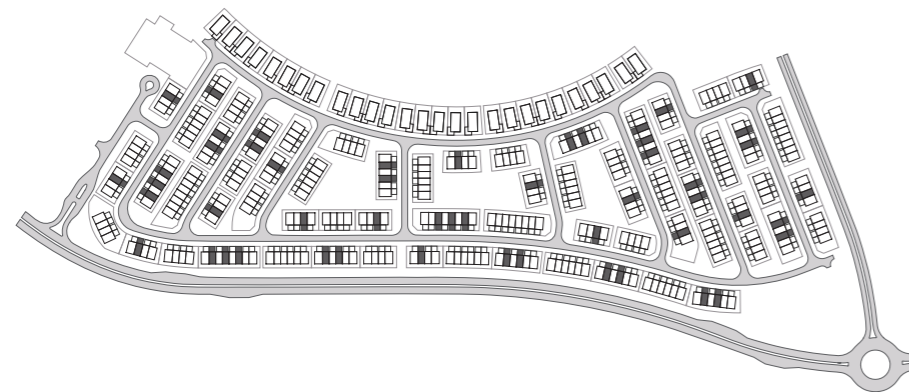
Grand Polo Club & Resort

## 3 BEDROOM STYLE C

SUITE AREA	1556.89 SQFT	144.64 SQM
GARAGE AREA	353.92 SQFT	32.88 SQM
BALCONY/TERRACE AREA	260.27 SQFT	24.18 SQM
<b>TOTAL AREA</b>	<b>2171.08 SQFT</b>	<b>201.70 SQM</b>



### KEY PLAN



GROUND FLOOR



FIRST FLOOR

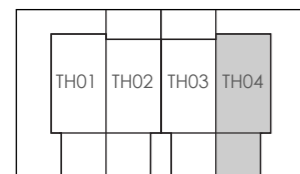
FLOOR PLAN 1. All dimensions are in imperial and metric, and measured from finish to finish excluding construction tolerances. 2. All materials, dimensions, and drawings are approximate only. 3. Information is subject to change without notice, at developer's absolute discretion. 4. Actual area may vary from the stated area. 5. Drawings not to scale. 6. All images used are for illustrative purposes only and do not represent the actual size, features, specifications, fittings, and furnishings. 7. The developer reserves the right to make revisions / alterations, at it's absolute discretion, without any liability whatsoever.

# EQUESTRA

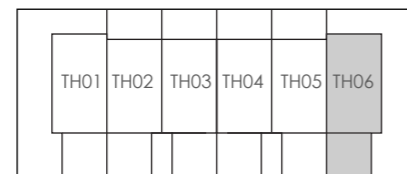
Grand Polo Club & Resort

## 4 BEDROOM STYLE C

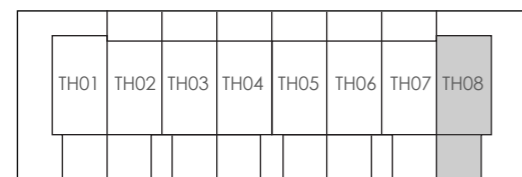
SUITE AREA	2008.66 SQFT	186.61 SQM
GARAGE AREA	377.60 SQFT	35.08 SQM
BALCONY/TERRACE AREA	96.44 SQFT	8.96 SQM
<b>TOTAL AREA</b>	<b>2482.70 SQFT</b>	<b>230.65 SQM</b>



4 PLEX

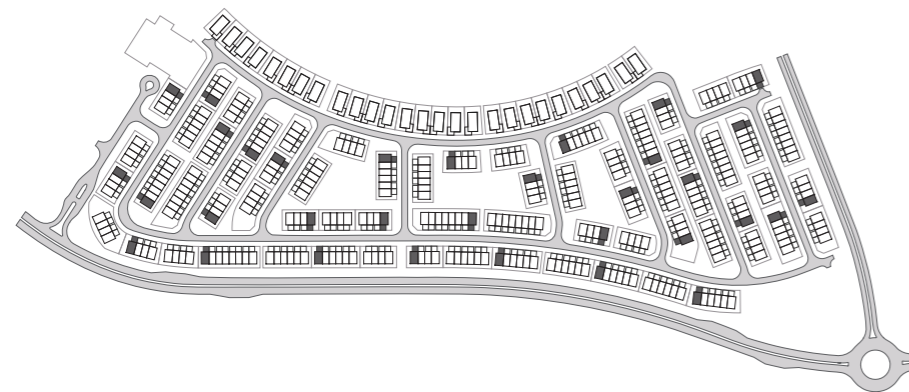


6 PLEX



8 PLEX

### KEY PLAN



GROUND FLOOR



FIRST FLOOR

FLOOR PLAN 1. All dimensions are in imperial and metric, and measured from finish to finish excluding construction tolerances. 2. All materials, dimensions, and drawings are approximate only. 3. Information is subject to change without notice, at developer's absolute discretion. 4. Actual area may vary from the stated area. 5. Drawings not to scale. 6. All images used are for illustrative purposes only and do not represent the actual size, features, specifications, fittings, and furnishings. 7. The developer reserves the right to make revisions / alterations, at it's absolute discretion, without any liability whatsoever.