

GIANFRANCO  
FERRE

RESIDENCES

---

Ras Al Khaimah

GIANFRANCO  
FERRE

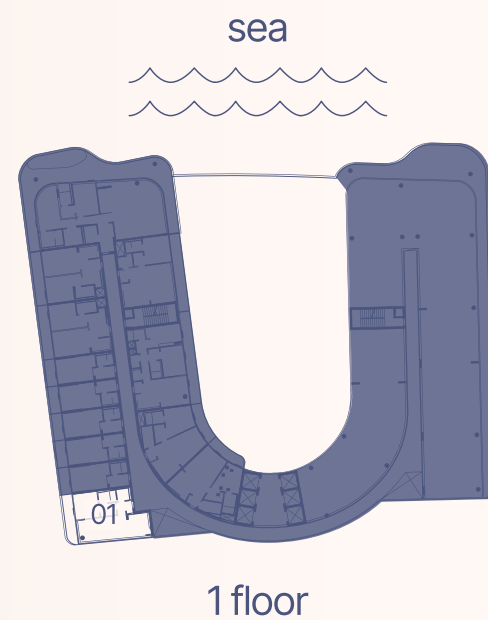
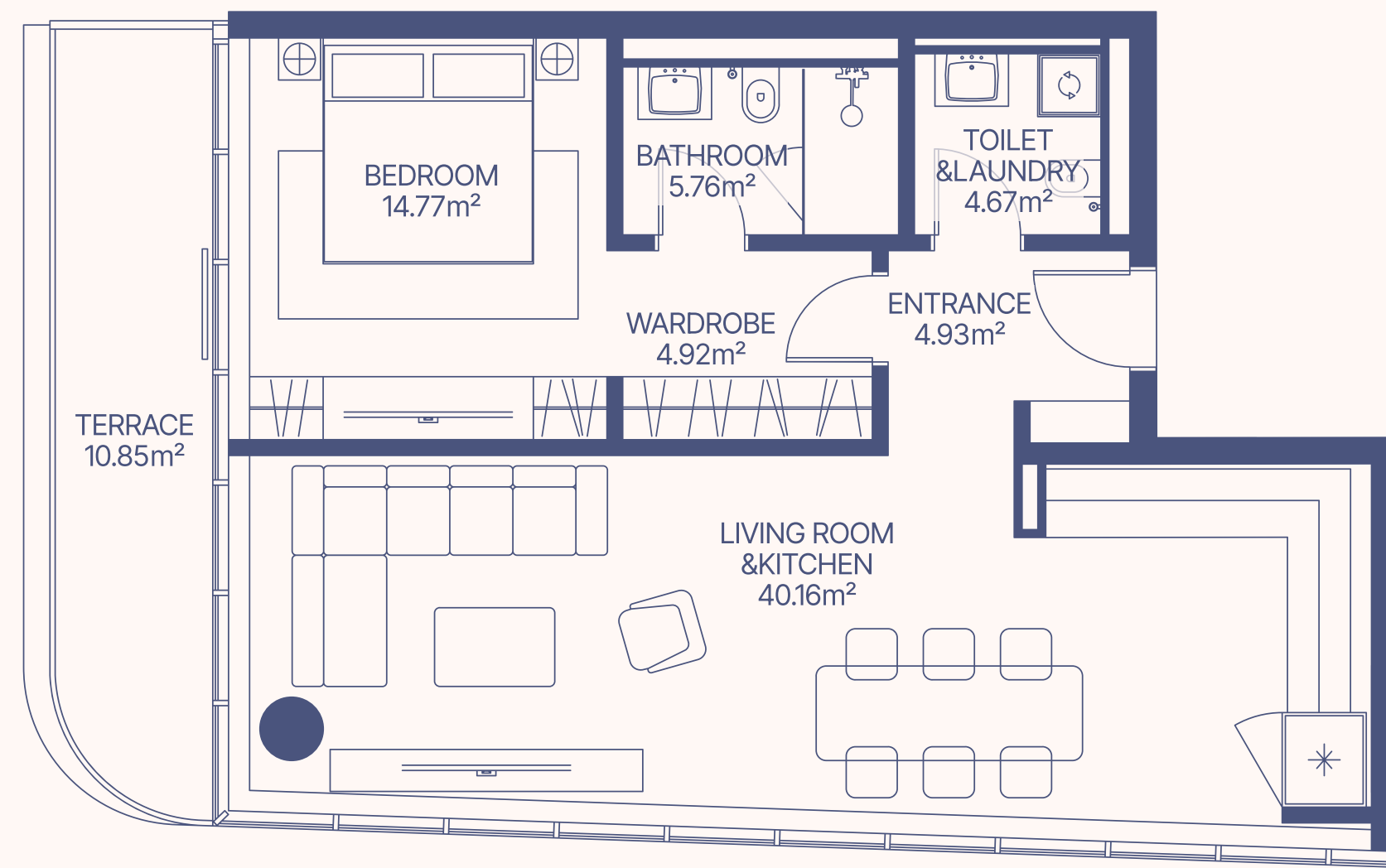
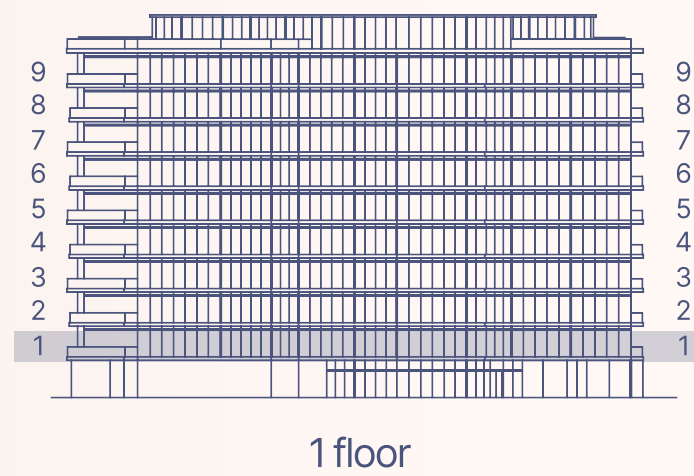
RESIDENCES

Ras Al Khaimah



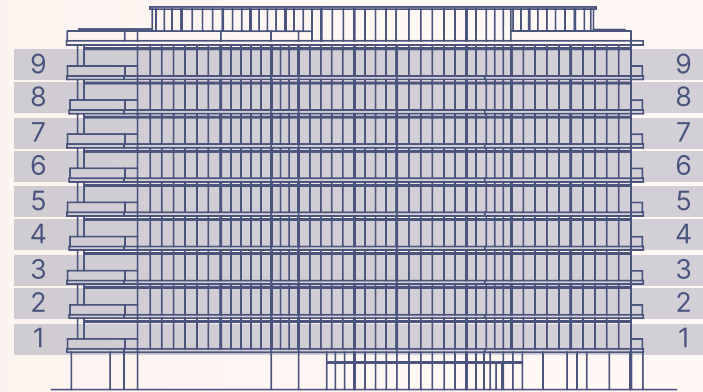
FLOOR  
PLANS

# TYPE 01 1 BEDROOM

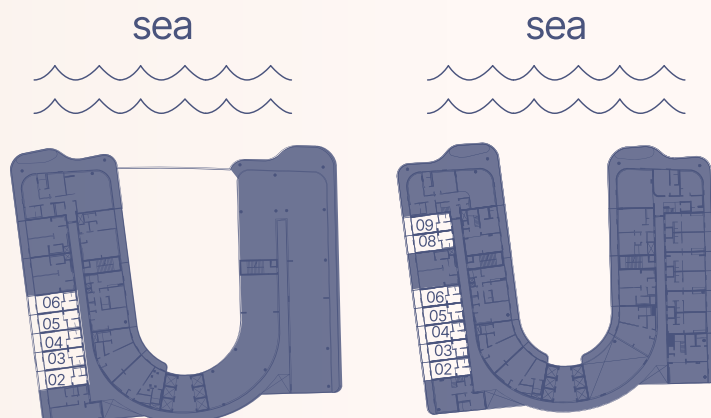


Apartment Number	Apartment Area		Balcony Area		Total Area	
101	75.21m <sup>2</sup>	809.26ft <sup>2</sup>	10.85m <sup>2</sup>	116.75ft <sup>2</sup>	86.06m <sup>2</sup>	926.01ft <sup>2</sup>

# TYPE 02 STUDIO

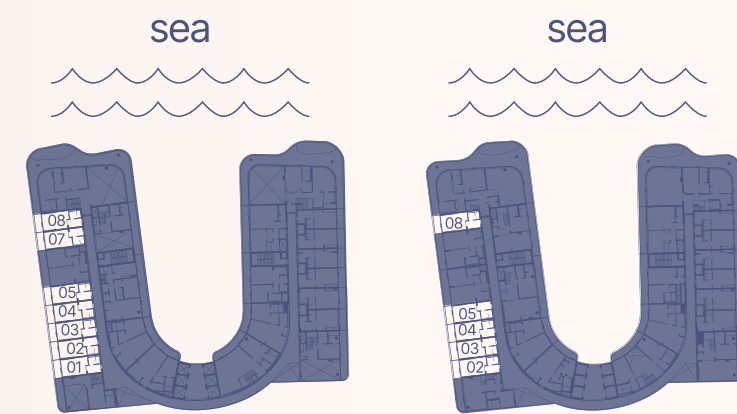


1-9 floor



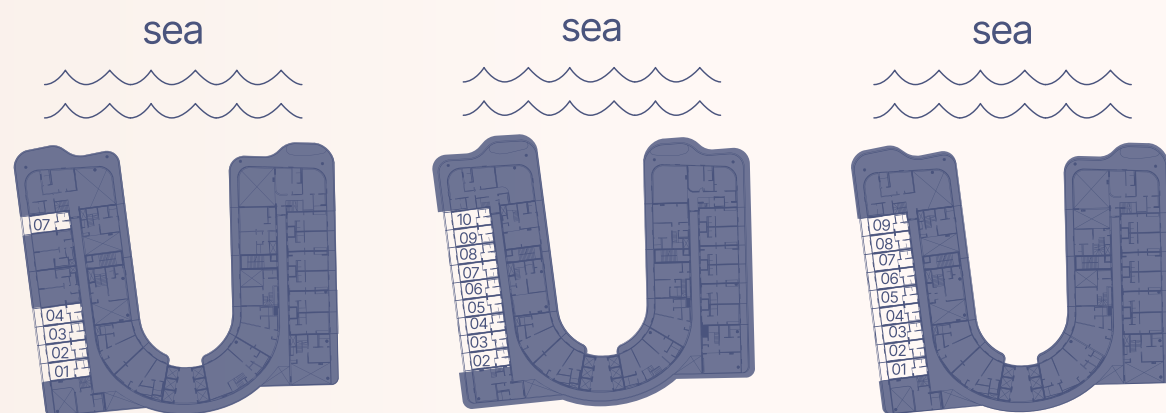
1 floor

2,4 floor



3,5 floor

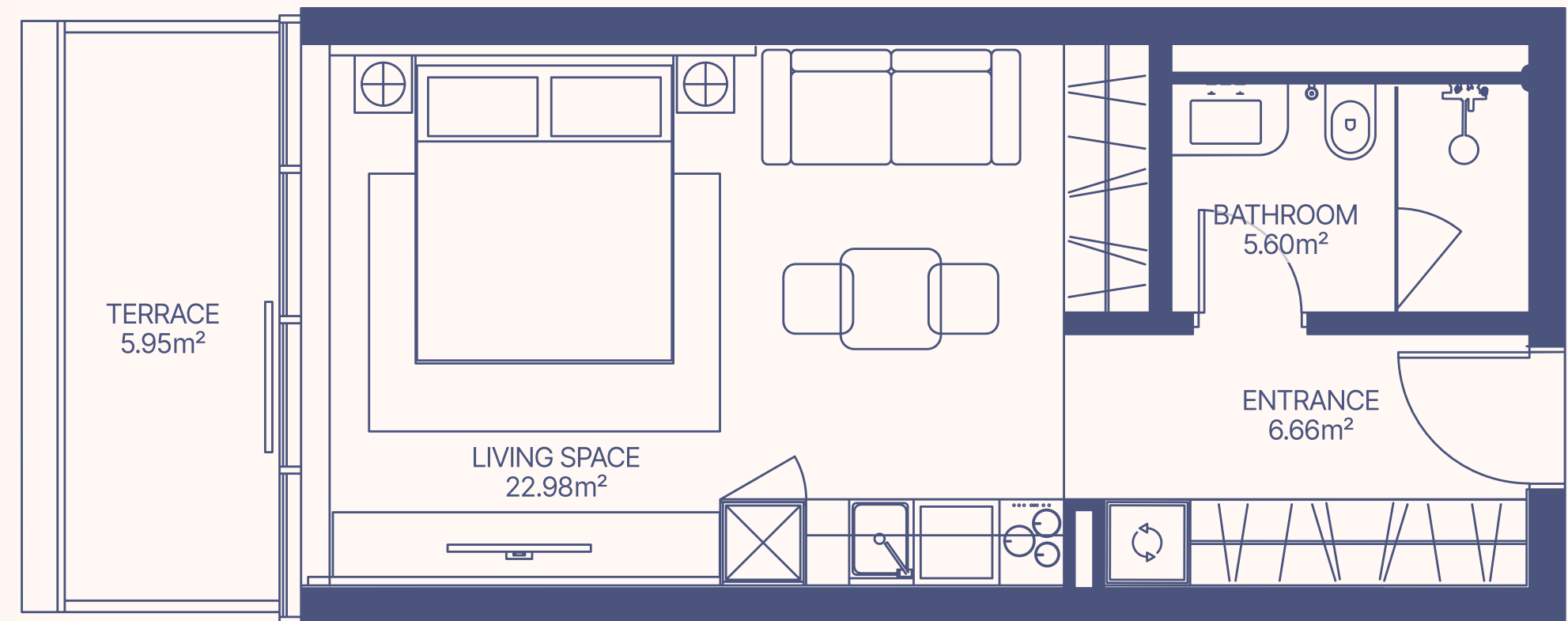
6 floor



7 floor

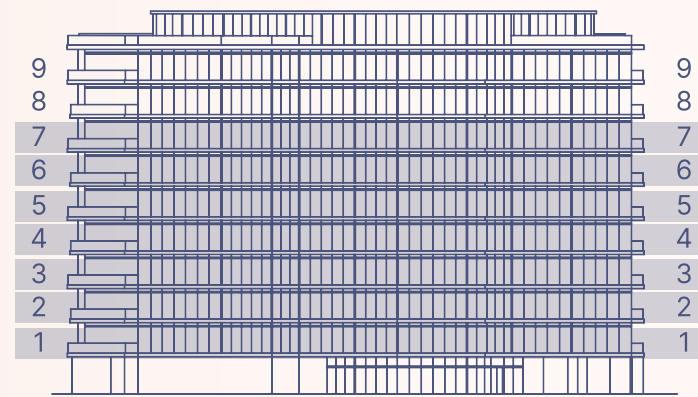
8 floor

9 floor

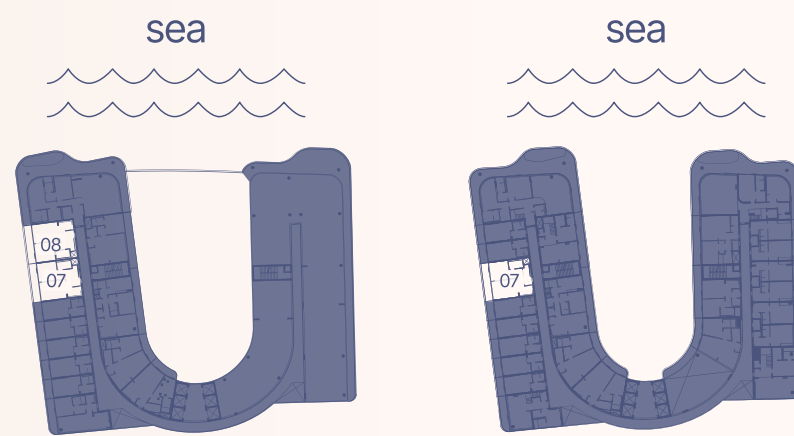


Apartment Number	Apartment Area		Balcony Area		Total Area	
	m <sup>2</sup>	ft <sup>2</sup>	m <sup>2</sup>	ft <sup>2</sup>	m <sup>2</sup>	ft <sup>2</sup>
102, 103, 104, 105, 106, 202, 203, 204, 205, 206, 208, 209, 301, 302, 303, 304, 305, 307, 308, 402, 403, 404, 405, 406, 408, 409, 501, 502, 503, 504, 505, 507, 508, 602, 603, 604, 605, 608, 701, 702, 703, 704, 707, 802, 803, 804, 805, 806, 807, 808, 809, 810, 901, 902, 903, 904, 905, 906, 907, 908, 909	35.24 m <sup>2</sup>	379.18 ft <sup>2</sup>	5.95 m <sup>2</sup>	64.02 ft <sup>2</sup>	41.19 m <sup>2</sup>	443.2 ft <sup>2</sup>

# TYPE 03 1 BEDROOM

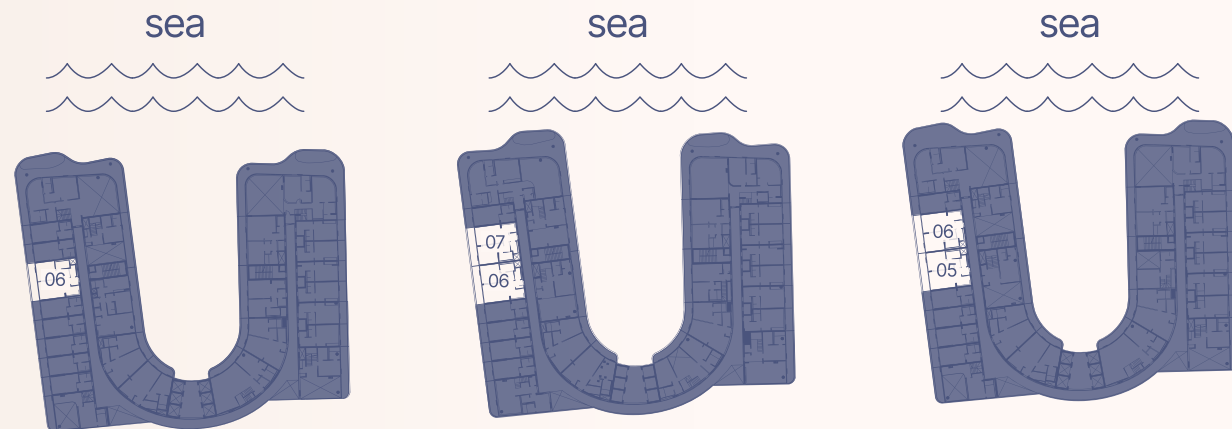


1-7 floor



1 floor

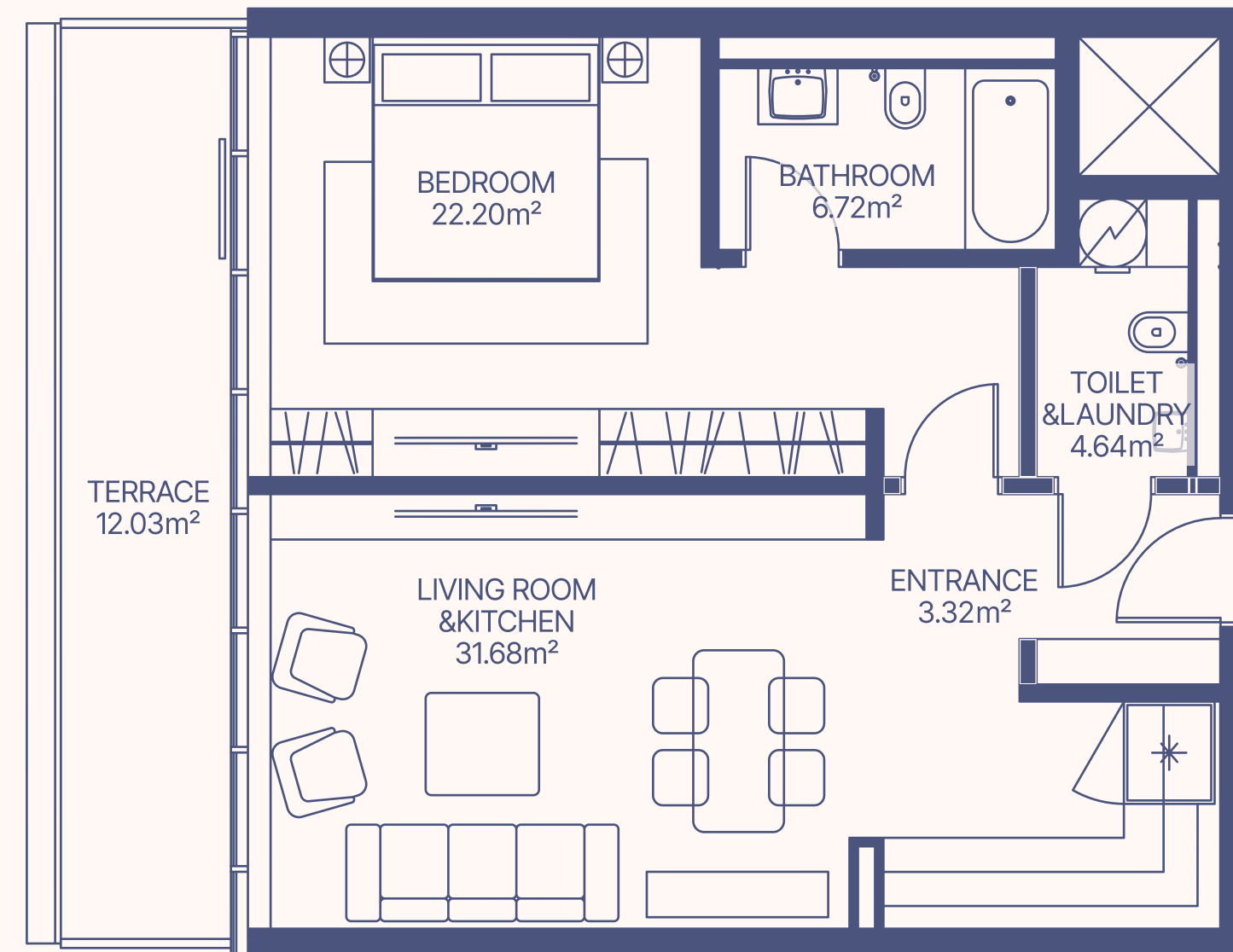
2,4 floor



3,5 floor

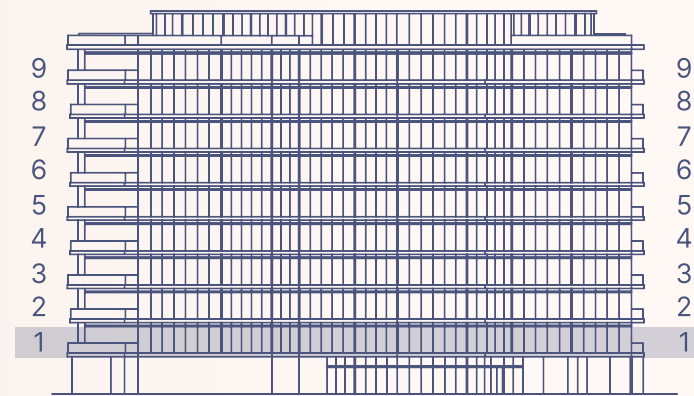
6 floor

7 floor

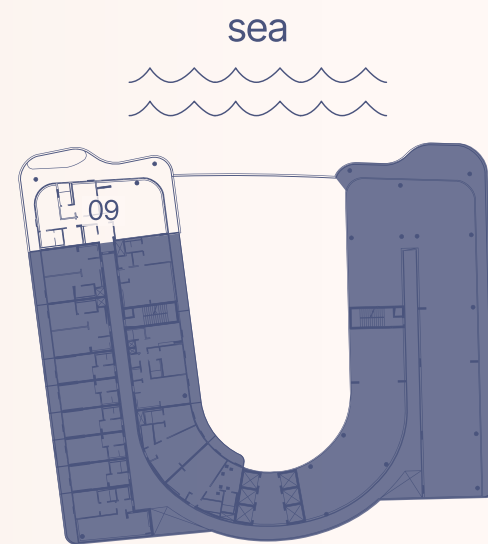


Apartment Number	Apartment Area		Balcony Area		Total Area	
107, 108, 207, 306, 407, 506, 606, 607, 705, 706	68.56 m <sup>2</sup>	737.71 ft <sup>2</sup>	12.03 m <sup>2</sup>	129.44 ft <sup>2</sup>	80.59 m <sup>2</sup>	867.15 ft <sup>2</sup>

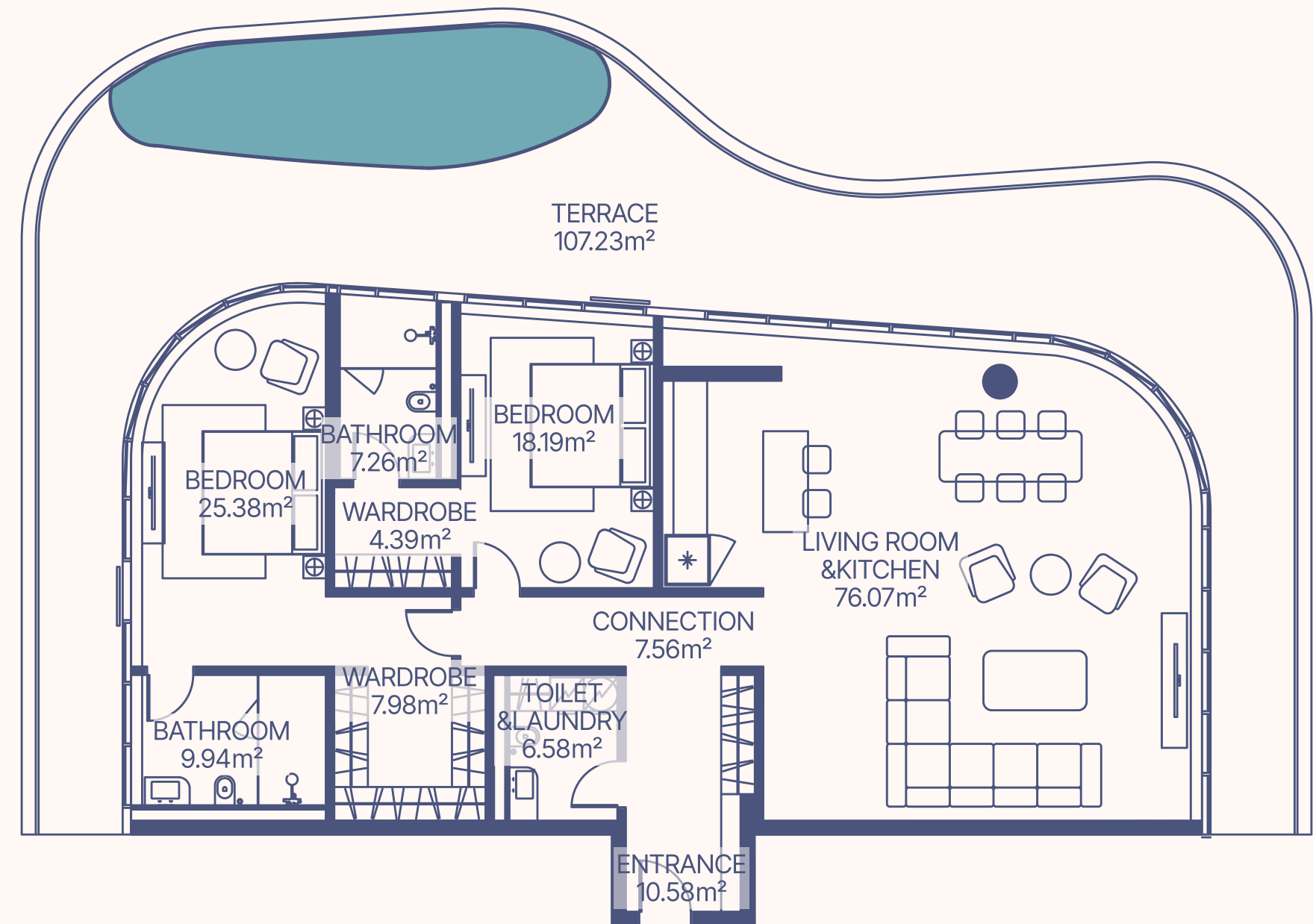
# TYPE 04 2 BEDROOM



1 floor

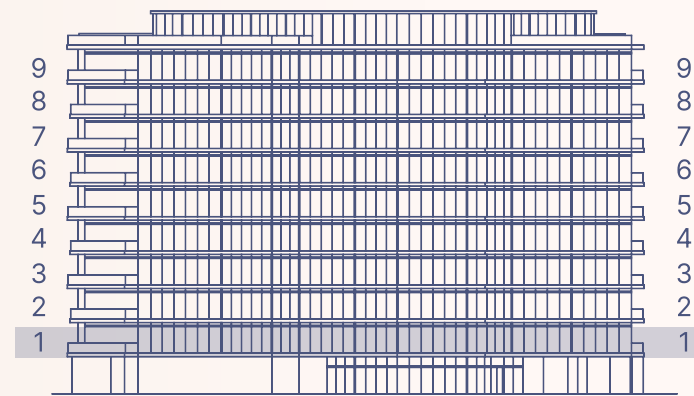


1 floor

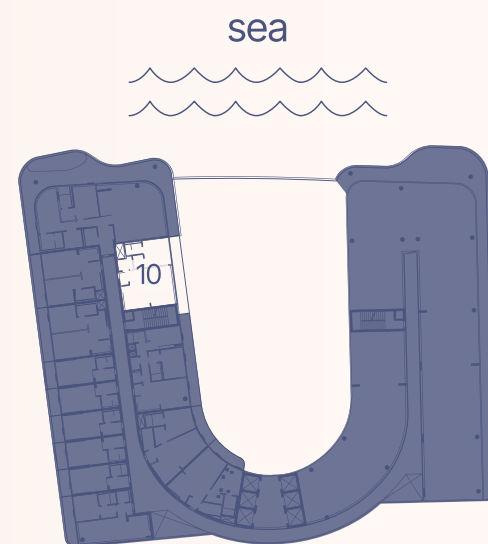


Apartment Number	Apartment Area		Balcony Area		Total Area	
109	173.93 m <sup>2</sup>	1871.49 ft <sup>2</sup>	107.46 m <sup>2</sup>	1156.27 ft <sup>2</sup>	281.39 m <sup>2</sup>	3027.76 ft <sup>2</sup>

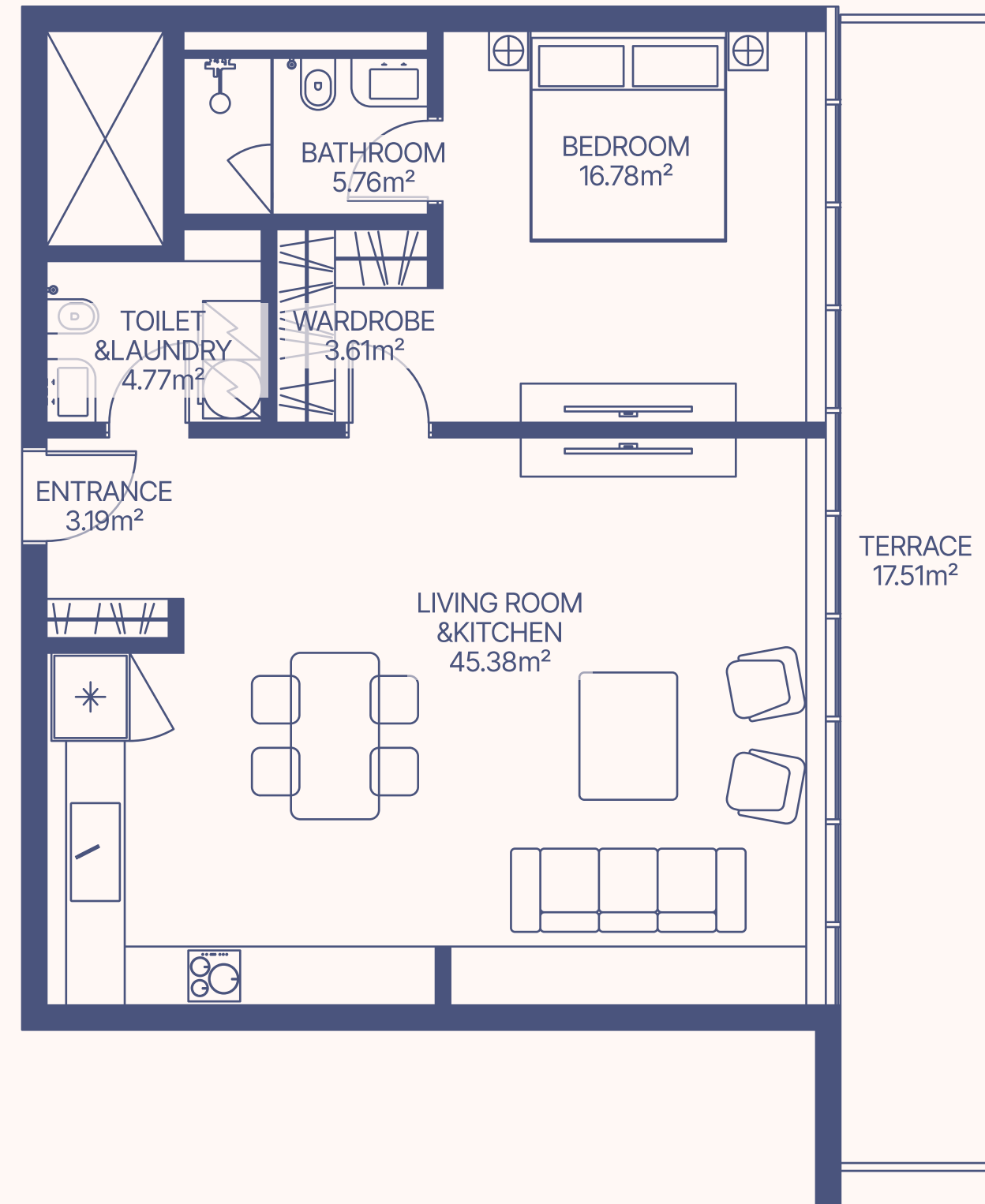
# TYPE 05 1 BEDROOM



1 floor

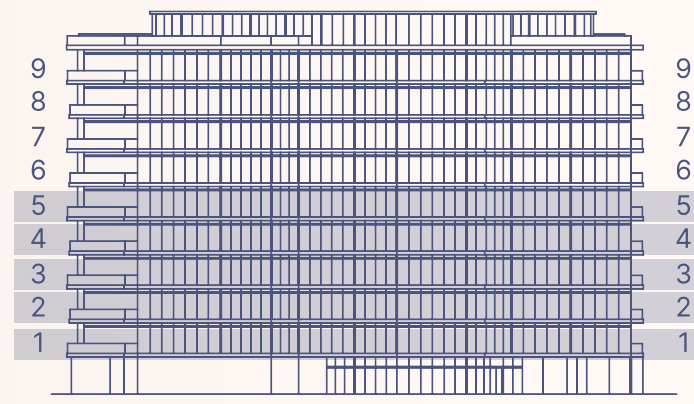


1 floor

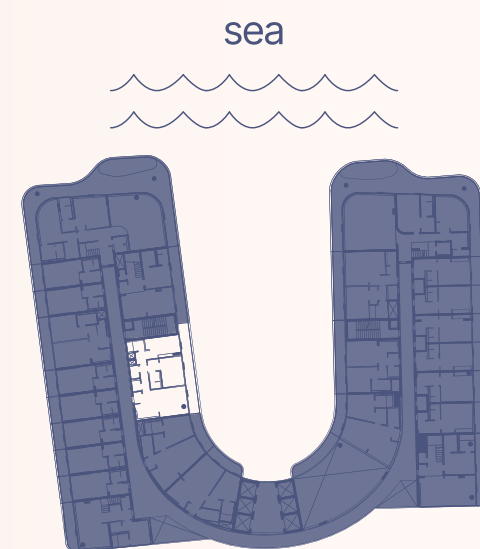


Apartment Number	Apartment Area		Balcony Area		Total Area	
110	79.49 m <sup>2</sup>	855.31 ft <sup>2</sup>	17.51 m <sup>2</sup>	188.41 ft <sup>2</sup>	97 m <sup>2</sup>	1043.72 ft <sup>2</sup>

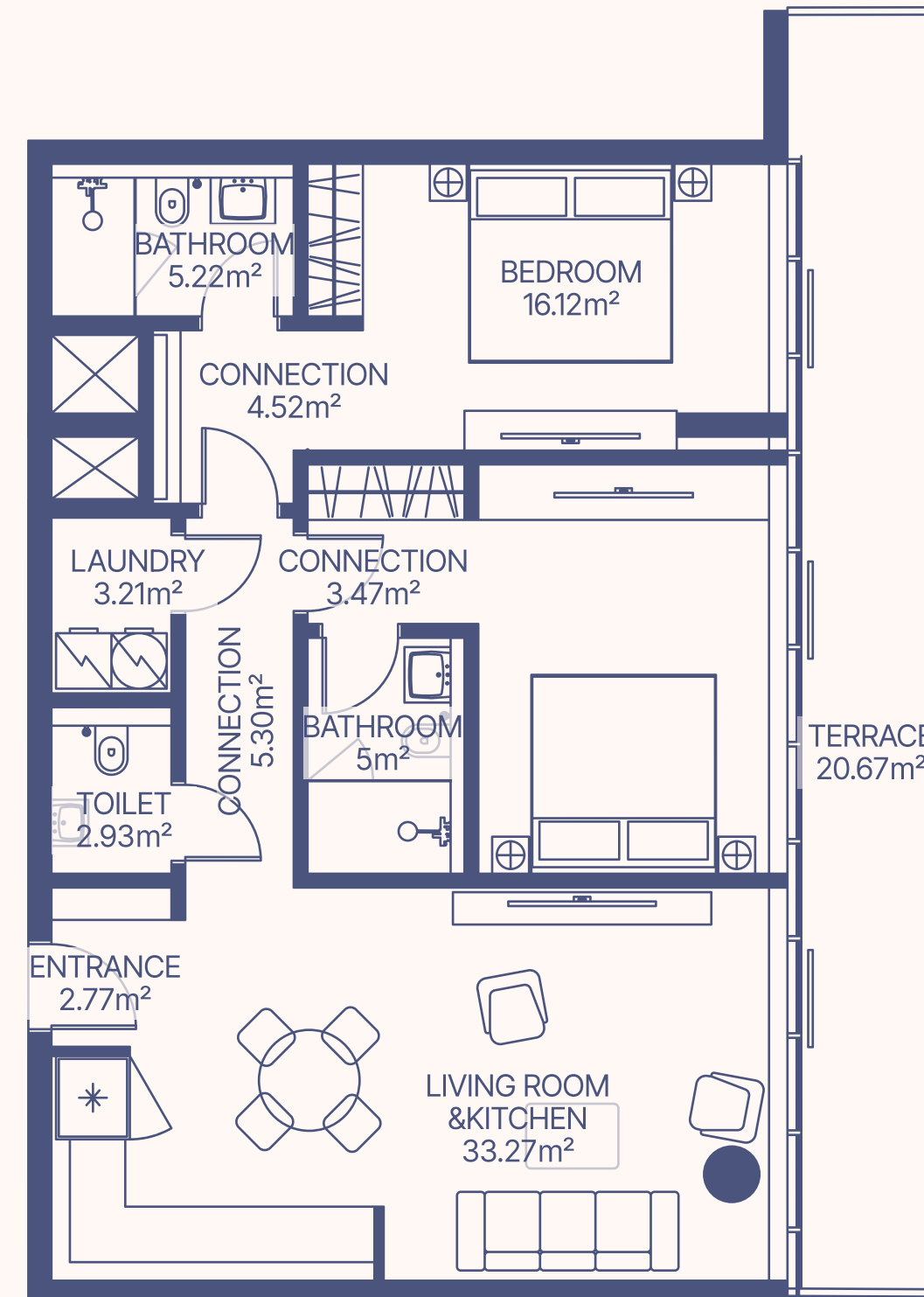
# TYPE 06 2 BEDROOM



1-5 floor

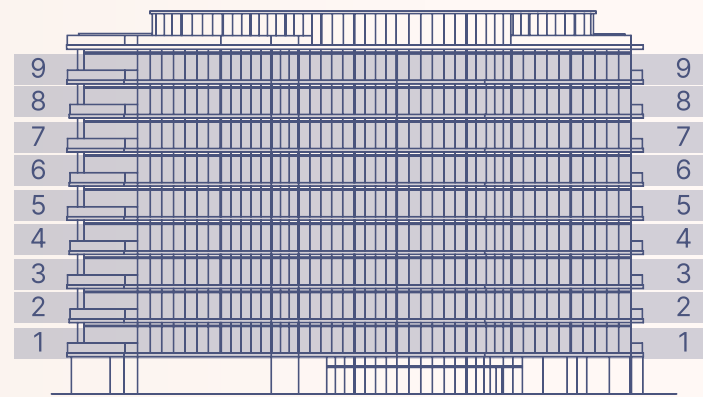


1-5 floor

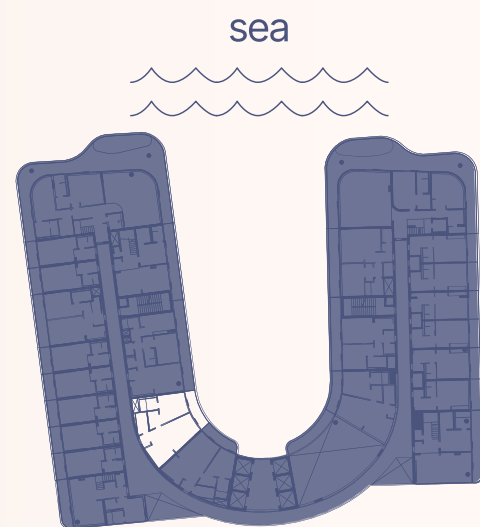
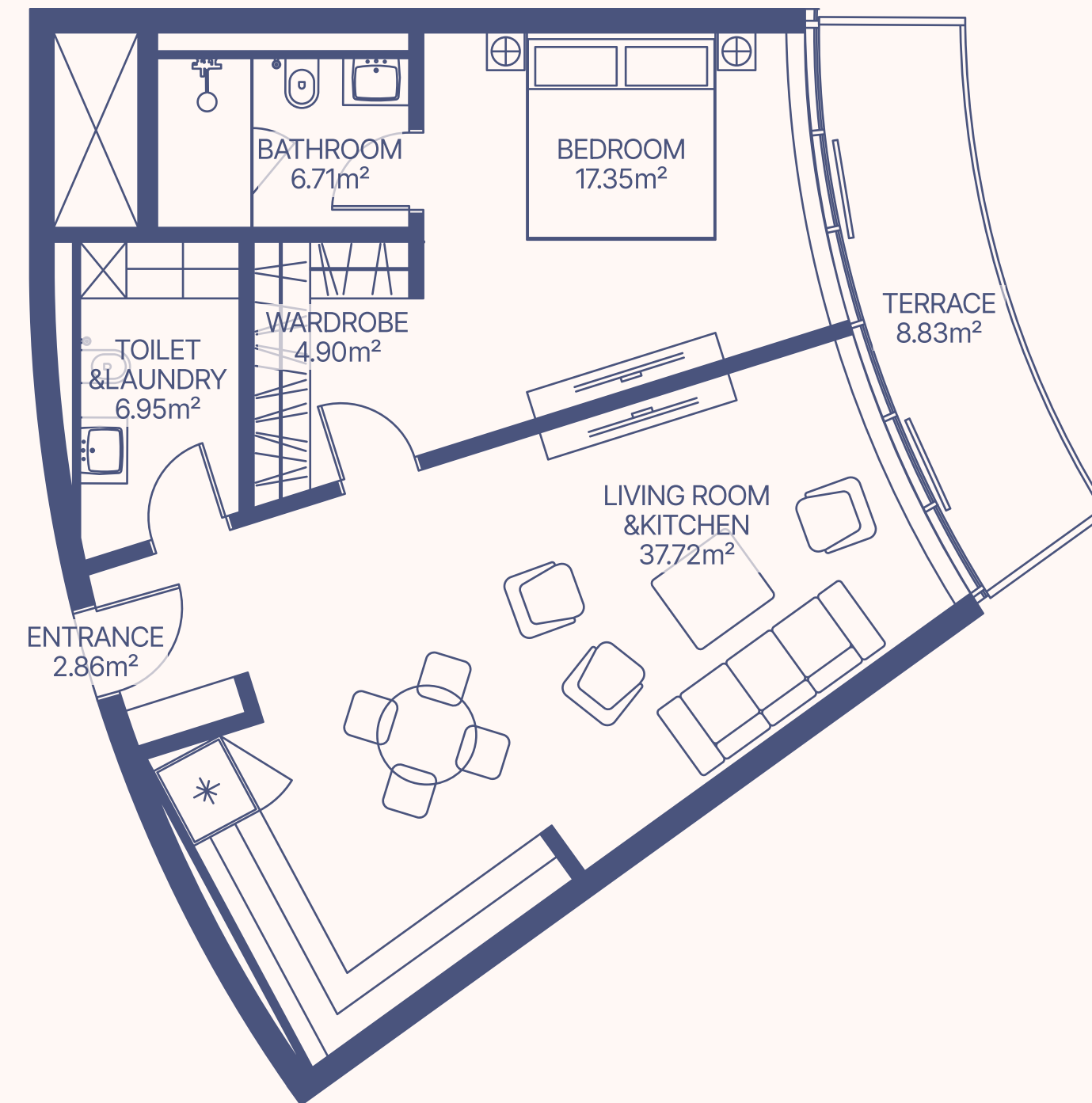


Apartment Number	Apartment Area		Balcony Area		Total Area	
111, 212, 309, 412, 509	97.78 m <sup>2</sup>	1052.11 ft <sup>2</sup>	20.67 m <sup>2</sup>	222.41 ft <sup>2</sup>	118.45 m <sup>2</sup>	1274.52 ft <sup>2</sup>

# TYPE 07 1 BEDROOM



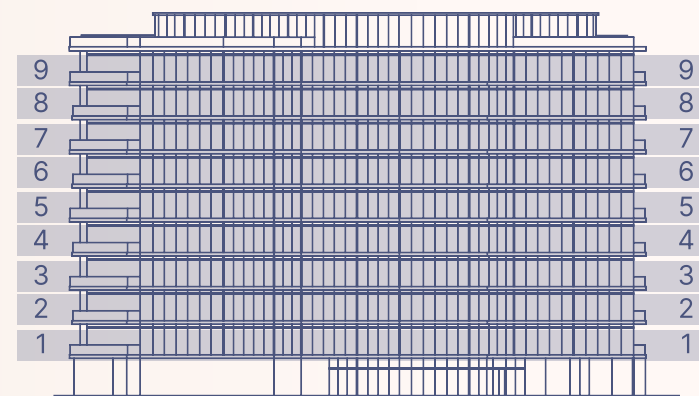
1-9 floor



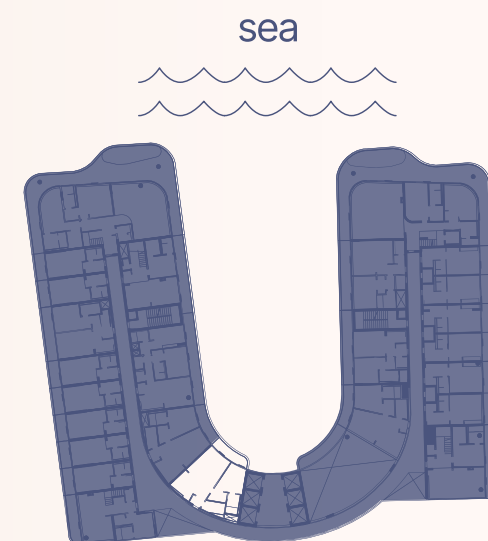
1-9 floor

Apartment Number	Apartment Area		Balcony Area		Total Area	
	m <sup>2</sup>	ft <sup>2</sup>	m <sup>2</sup>	ft <sup>2</sup>	m <sup>2</sup>	ft <sup>2</sup>
112, 213, 310, 413, 510, 612, 708, 814, 910	76.54	823.57	8.83	95.01	85.37	918.58

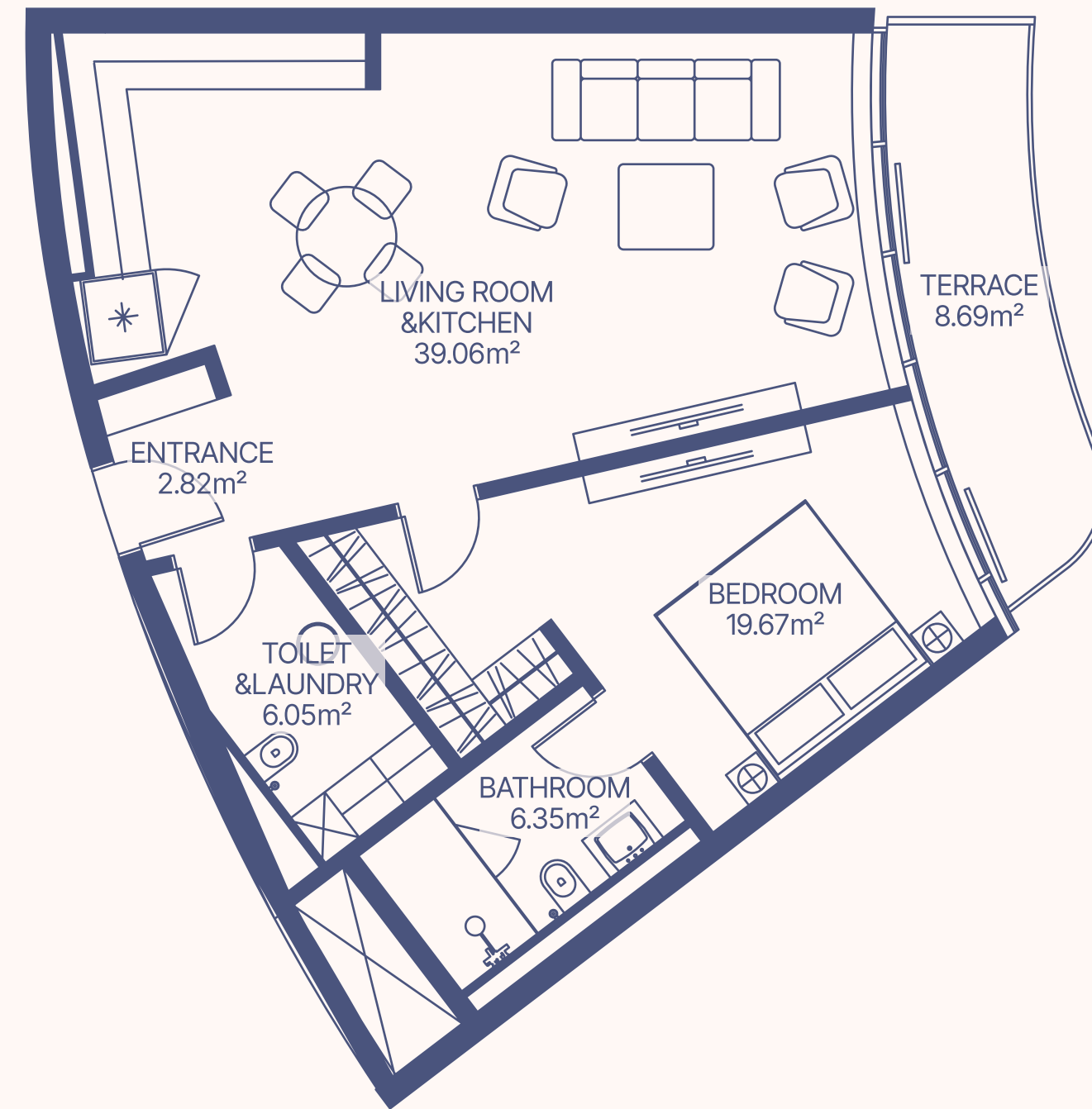
# TYPE 08 1 BEDROOM



1-9 floor

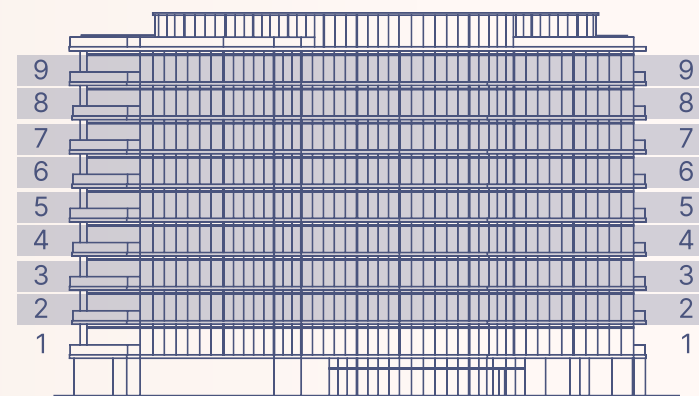


1-9 floor

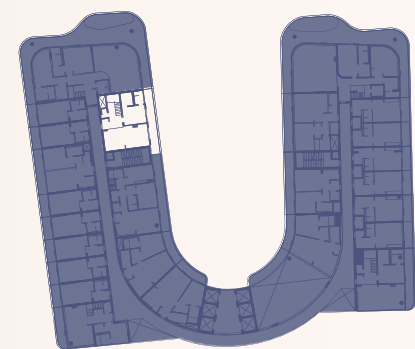


Apartment Number	Apartment Area		Balcony Area		Total Area	
113, 214, 311, 414, 511, 613, 709, 815, 911	73.95 m <sup>2</sup>	795.7 ft <sup>2</sup>	8.69 m <sup>2</sup>	93.5 ft <sup>2</sup>	82.64 m <sup>2</sup>	889.21 ft <sup>2</sup>

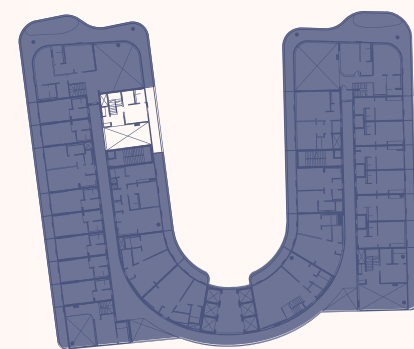
# TYPE 09 2 BEDROOM DUPLEX



2-3, 4-5, 6-7, 8-9 floor



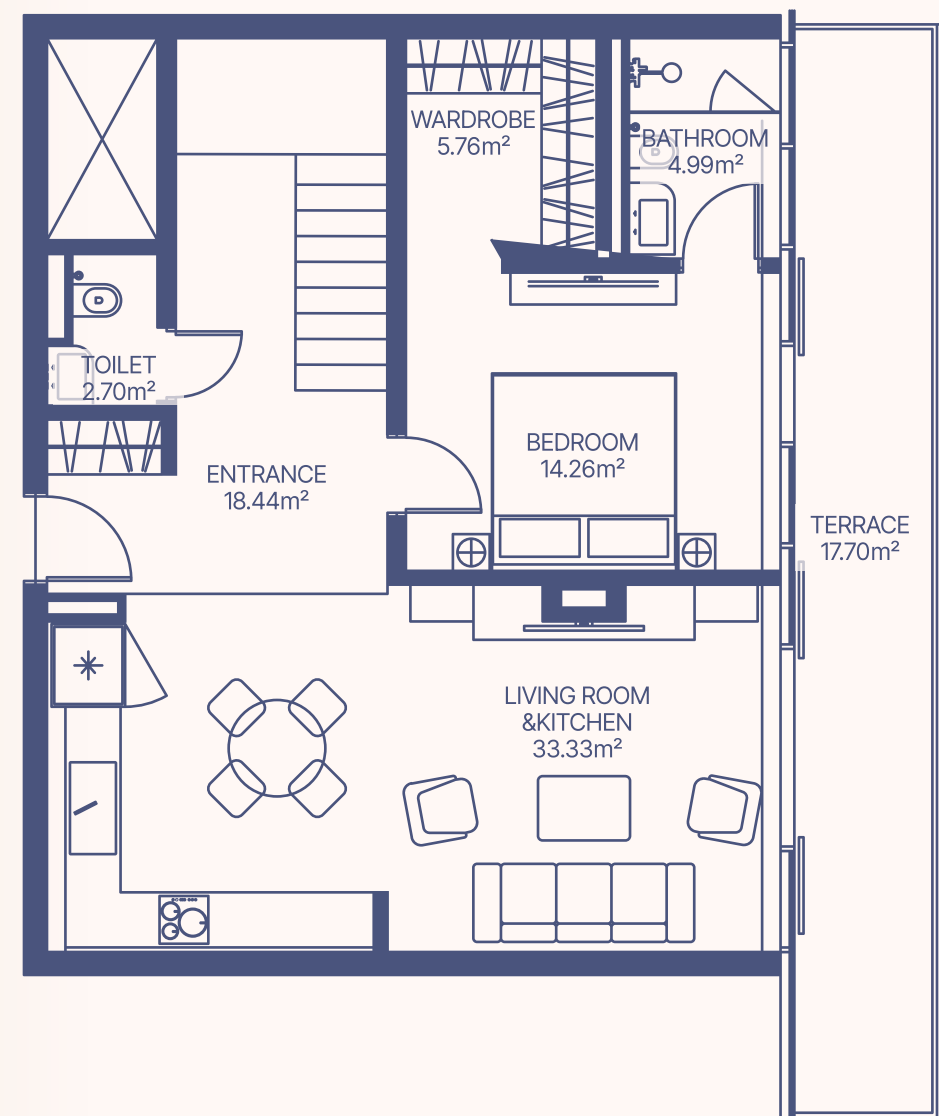
Lower Level



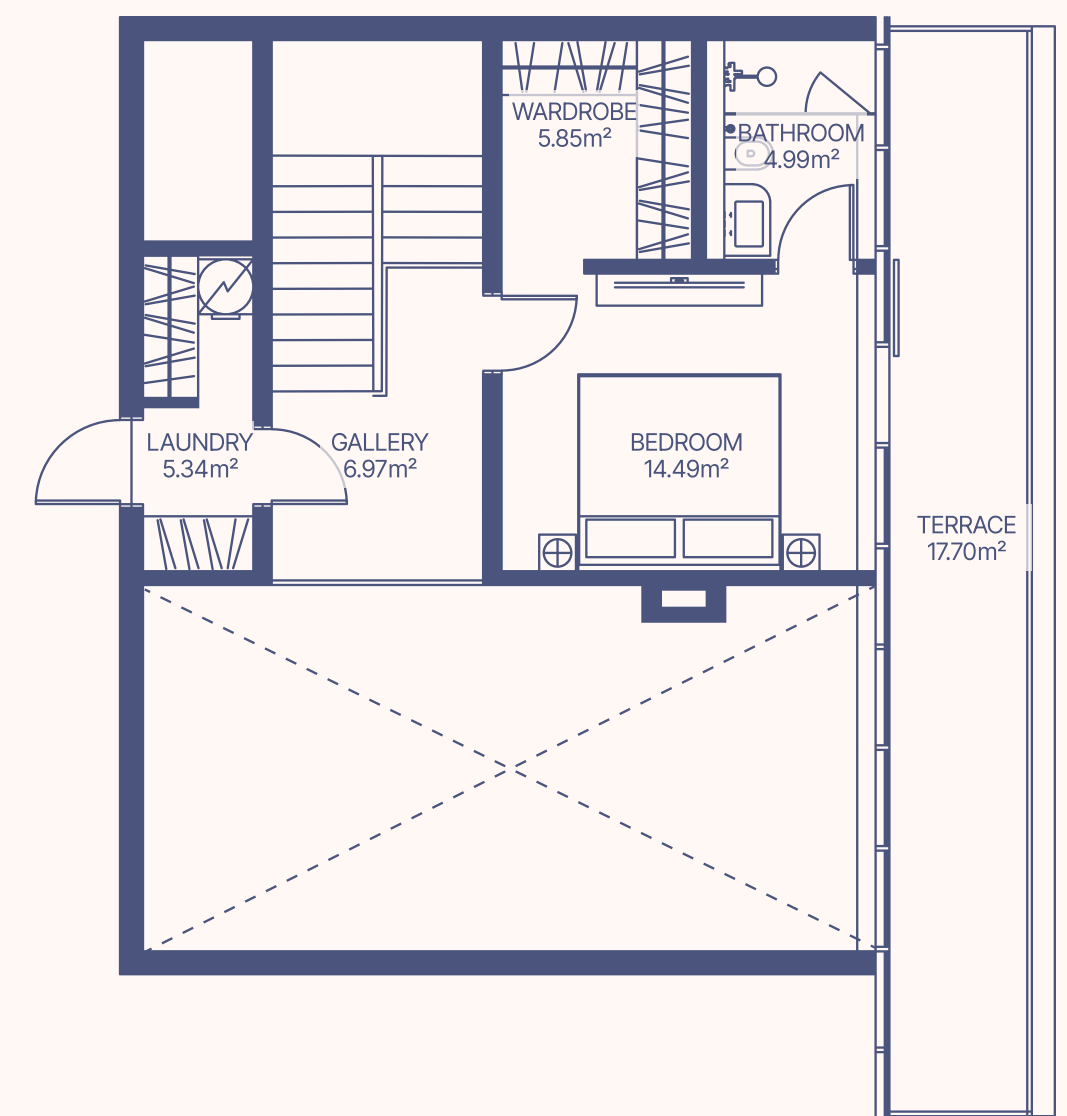
Upper Level

2-3, 4-5, 6-7, 8-9 floor

LOWER LEVEL

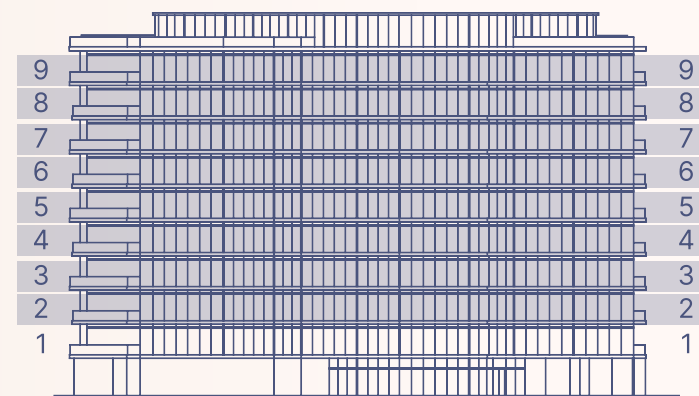


UPPER LEVEL

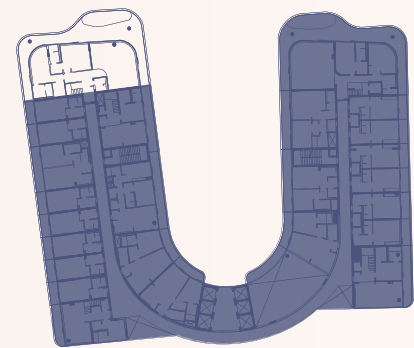
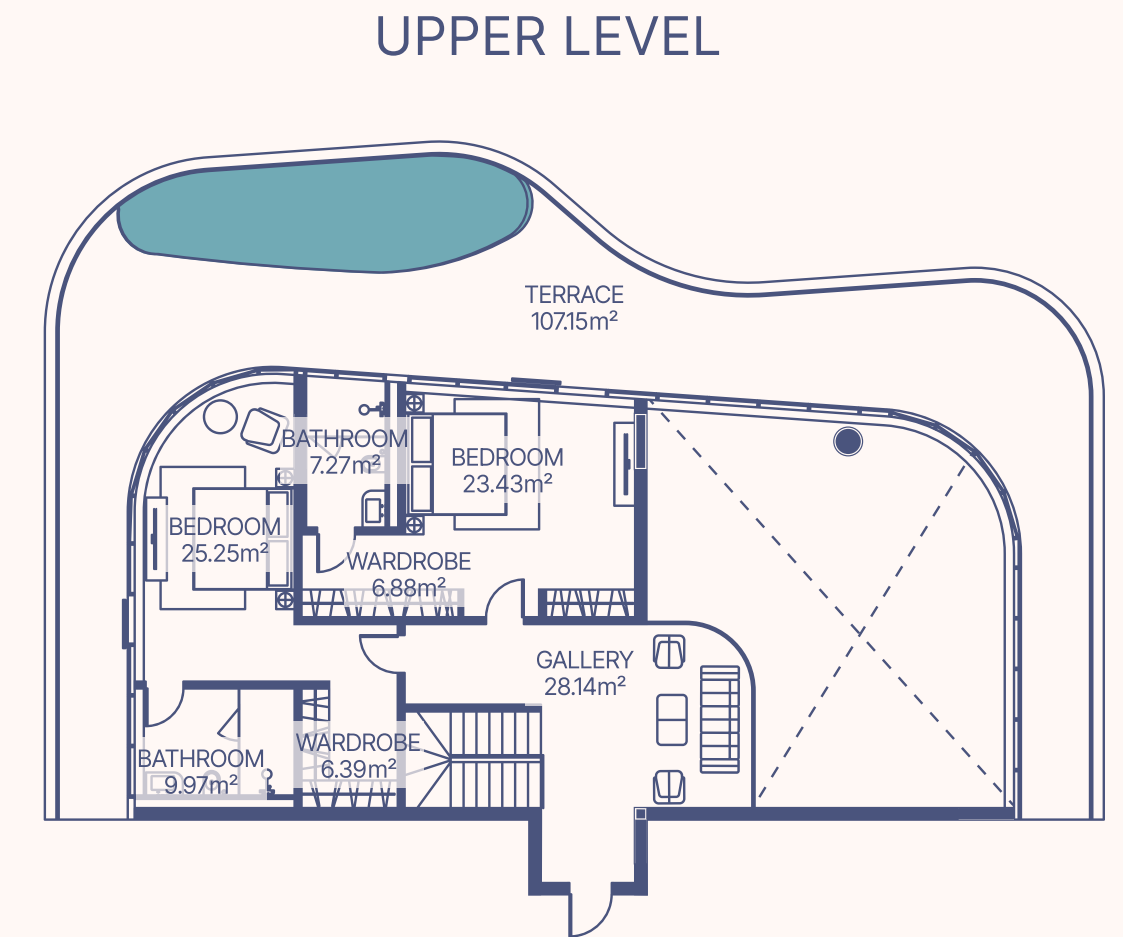
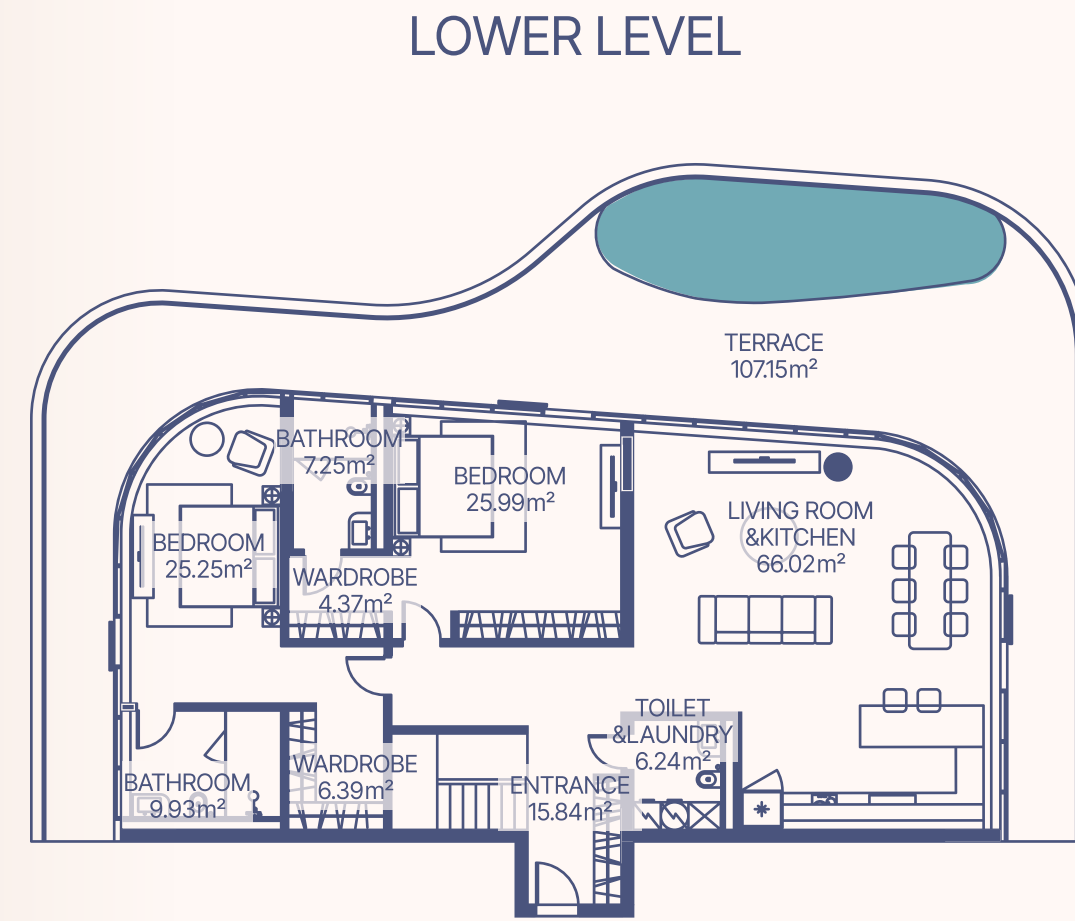


Apartment Number	Apartment Area		Balcony Area		Total Area Per Floor		
	Lower Level	Upper Level	Lower Level	Upper Level	Lower Level	Upper Level	
211, 411, 610, 812	79.49 m <sup>2</sup>	37.64 m <sup>2</sup>	17.7 m <sup>2</sup>	17.7 m <sup>2</sup>	190.45 ft <sup>2</sup>	55.34 m <sup>2</sup>	1045.76 ft <sup>2</sup>
Total Area	117.13 m <sup>2</sup>		35.4 m <sup>2</sup>		380.9 ft <sup>2</sup>		1641.22 ft <sup>2</sup>

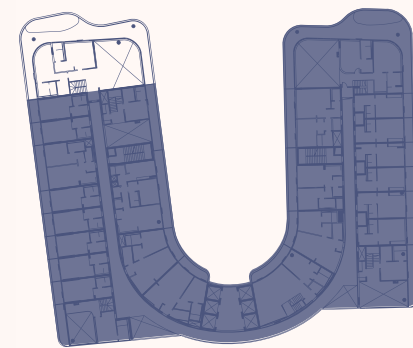
# TYPE 10 4 BEDROOM DUPLEX



2-3, 4-5, 6-7, 8-9 floor



Lower Level

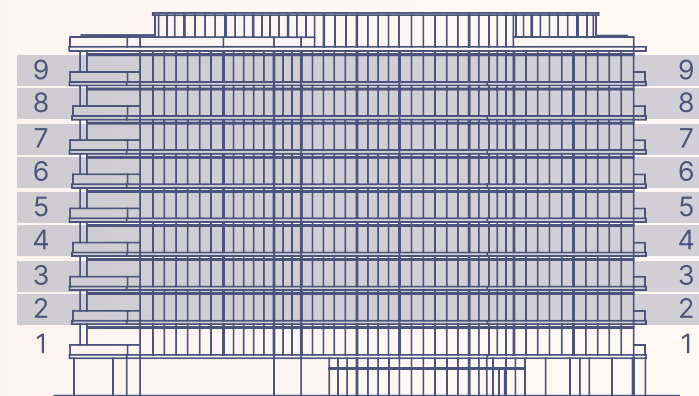


Upper Level

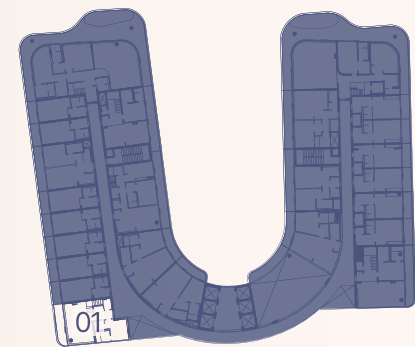
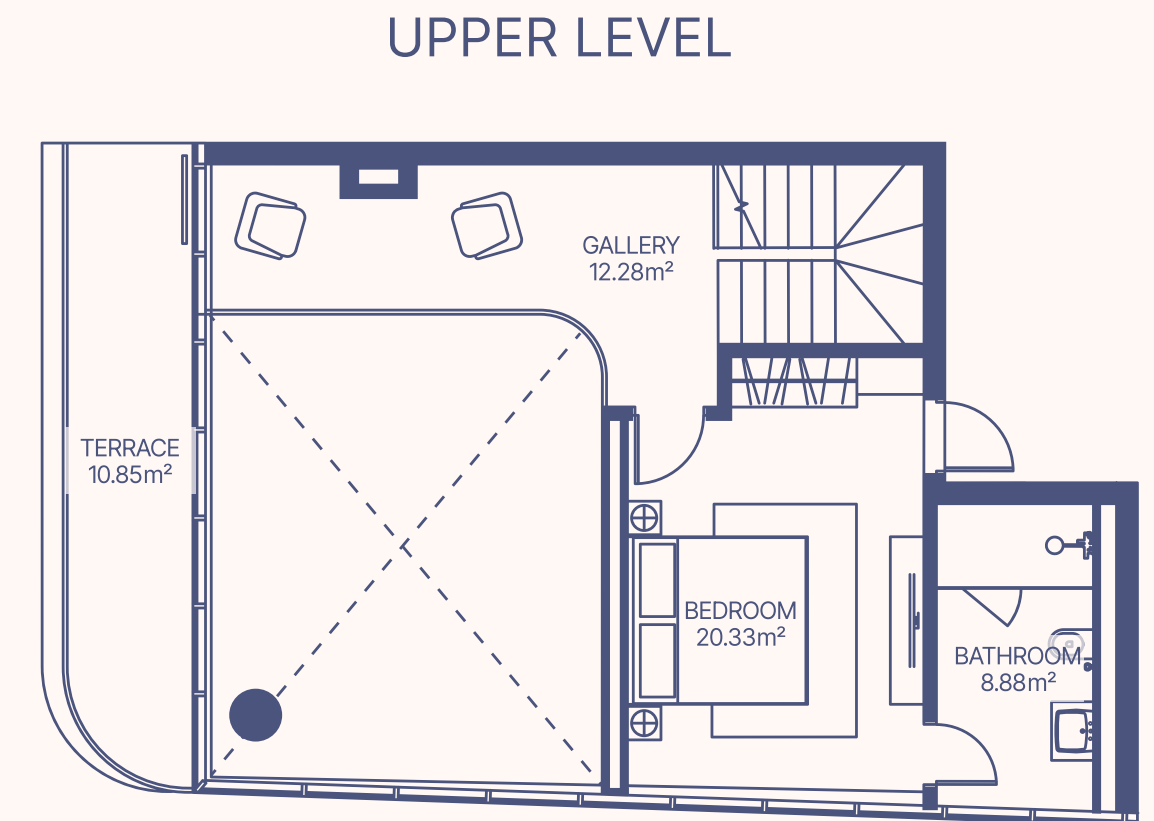
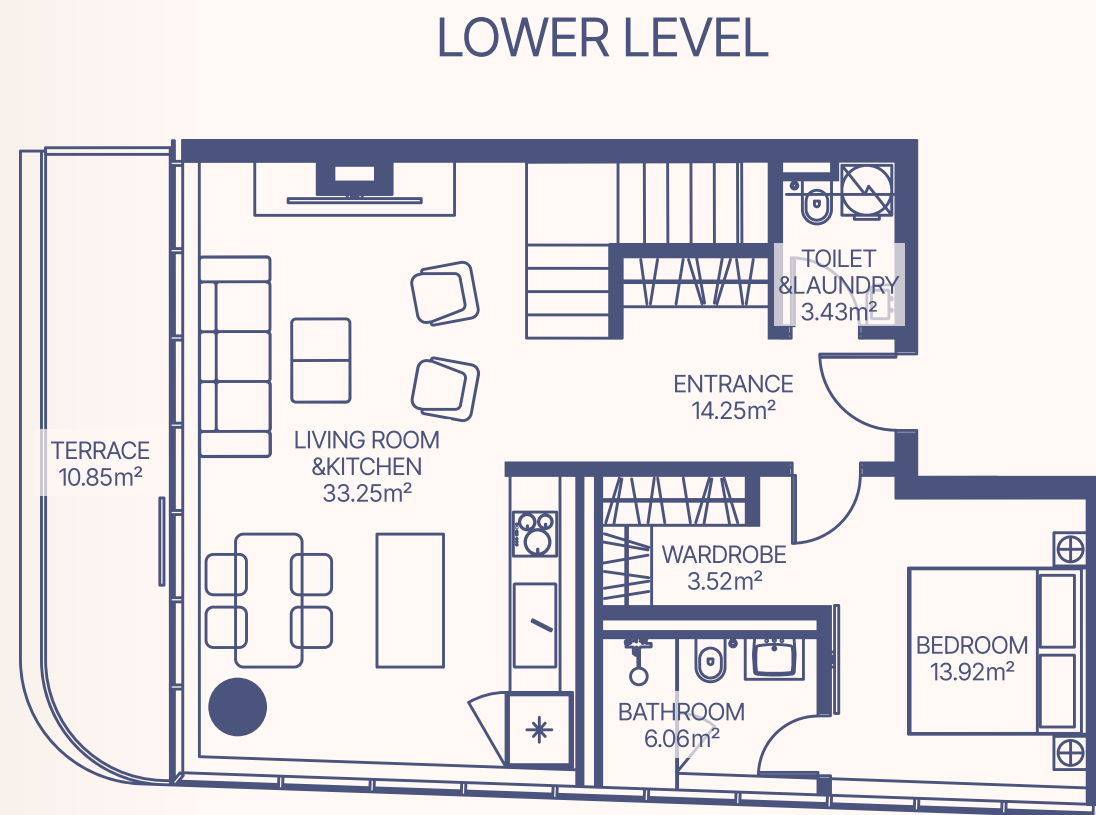
2-3, 4-5, 6-7, 8-9 floor

Apartment Number	Apartment Area		Balcony Area		Total Area Per Floor	
	Lower Level	Upper Level	Lower Level	Upper Level	Lower Level	Upper Level
210, 410, 609, 811	178.93 m <sup>2</sup>	107.33 m <sup>2</sup>	107.15 m <sup>2</sup>	107.23 m <sup>2</sup>	286.08 m <sup>2</sup>	2308.67 ft <sup>2</sup>
Total Area	286.26 m <sup>2</sup>	3080.16ft <sup>2</sup>	214.38 m <sup>2</sup>	2306.73 ft <sup>2</sup>	500.64 m <sup>2</sup>	5386.89 ft <sup>2</sup>

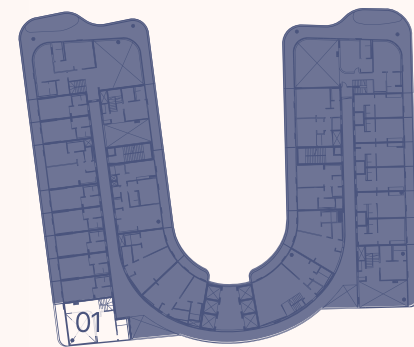
# TYPE 11 2 BEDROOM DUPLEX



2-3, 4-5, 6-7, 8-9 floor



Lower Level

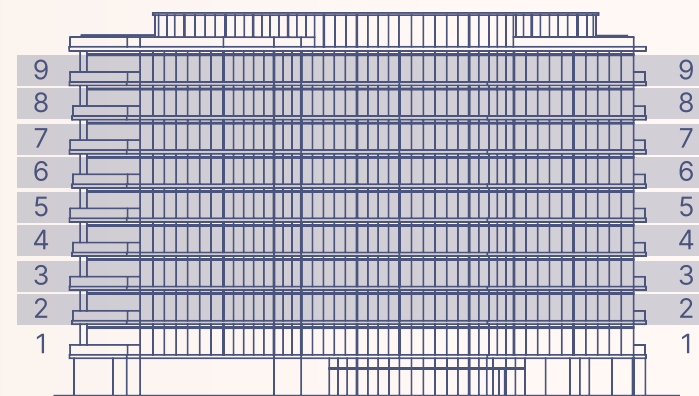


Upper Level

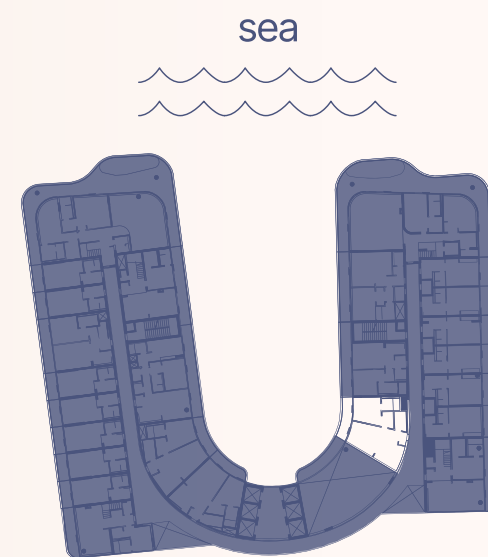
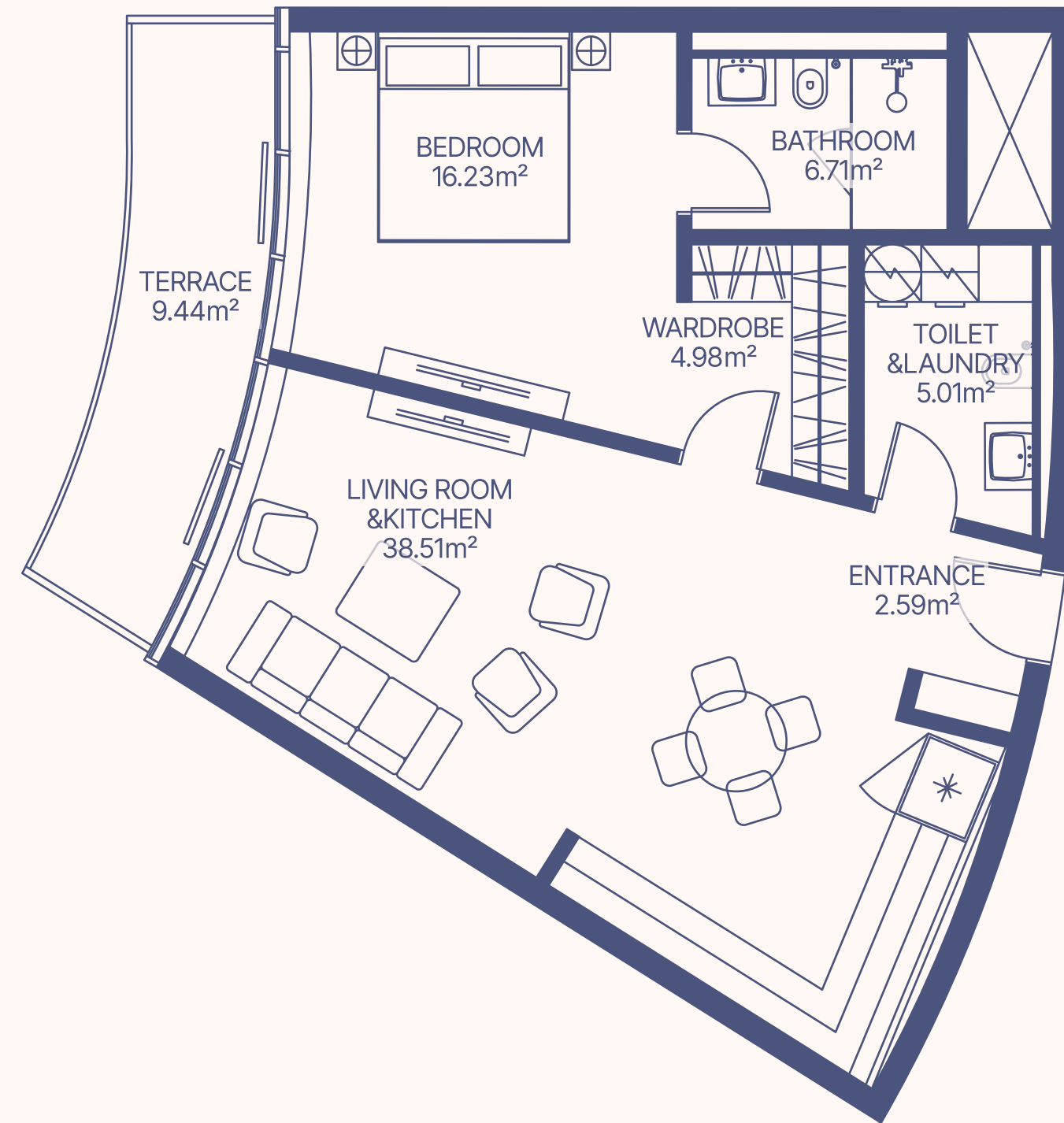
2-3, 4-5, 6-7, 8-9 floor

Apartment Number	Apartment Area		Balcony Area		Total Area Per Floor	
	Lower Level	Upper Level	Lower Level	Upper Level	Lower Level	Upper Level
201, 401, 601, 801	75.08 m <sup>2</sup>	42.53 m <sup>2</sup>	10.85 m <sup>2</sup>	10.85 m <sup>2</sup>	85.93 m <sup>2</sup>	53.38 m <sup>2</sup>
	807.86 ft <sup>2</sup>	457.62 ft <sup>2</sup>	116.75 ft <sup>2</sup>	116.75 ft <sup>2</sup>	924.61 ft <sup>2</sup>	457.62 ft <sup>2</sup>
<b>Total Area</b>	<b>117.61 m<sup>2</sup></b>	<b>1265.48 ft<sup>2</sup></b>	<b>21.7 m<sup>2</sup></b>	<b>233.49 ft<sup>2</sup></b>	<b>139.31 m<sup>2</sup></b>	<b>1498.98 ft<sup>2</sup></b>

# TYPE 12 1 BEDROOM



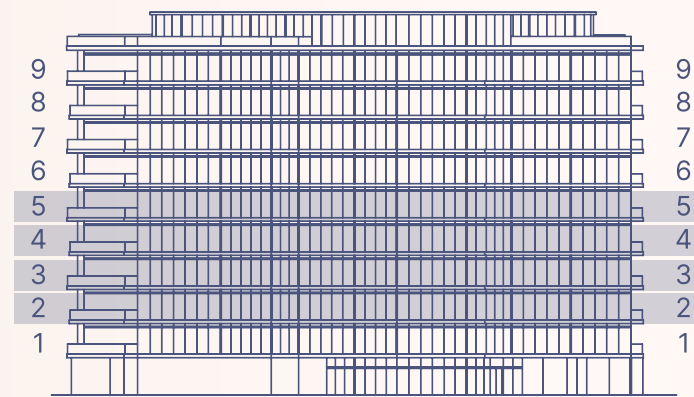
2-9 floor



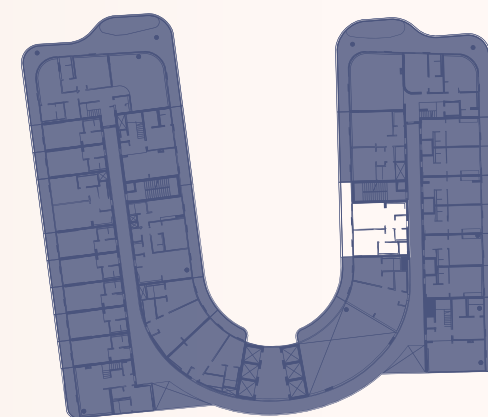
2-9 floor

Apartment Number	Apartment Area		Balcony Area		Total Area	
215, 313, 415, 513, 614, 711, 816, 913	75.79 m <sup>2</sup>	815.5 ft <sup>2</sup>	9.44 m <sup>2</sup>	101.57 ft <sup>2</sup>	85.23 m <sup>2</sup>	917.07 ft <sup>2</sup>

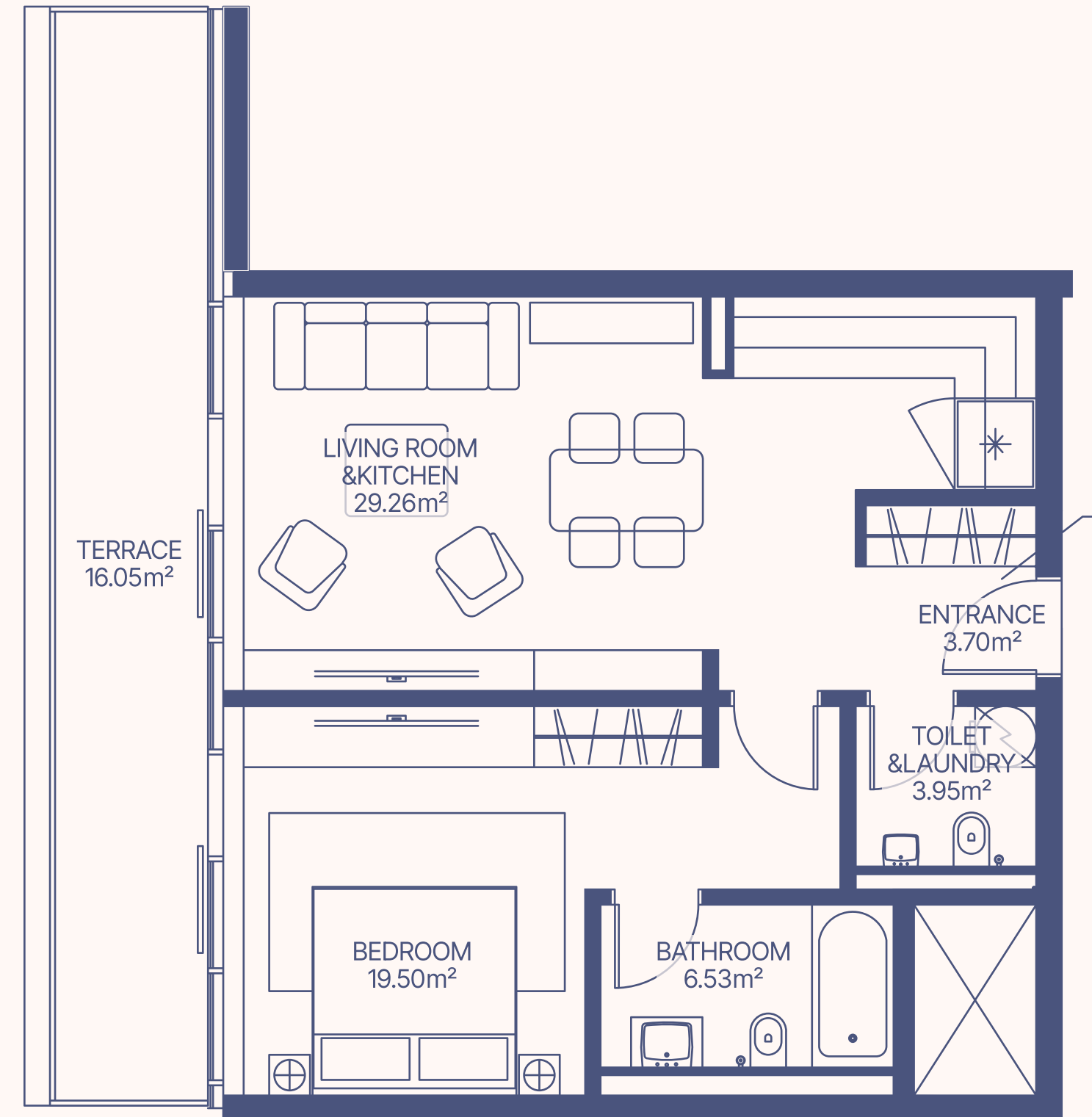
# TYPE 13 1 BEDROOM



2-5 floor

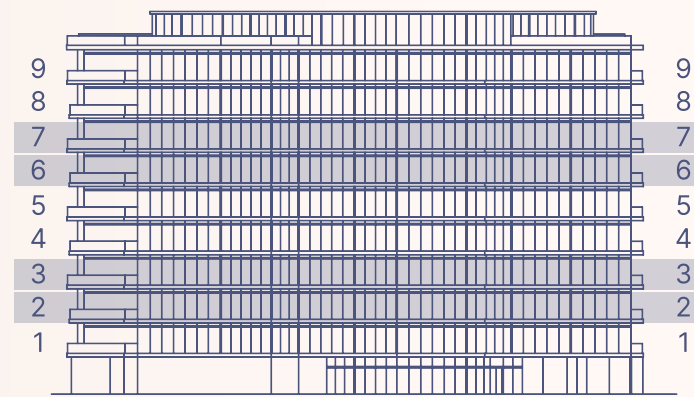


2-5 floor



Apartment Number	Apartment Area		Balcony Area		Total Area	
216, 314, 416, 514	62.95 m <sup>2</sup>	677.34 ft <sup>2</sup>	16.05 m <sup>2</sup>	172.7 ft <sup>2</sup>	79 m <sup>2</sup>	850.04 ft <sup>2</sup>

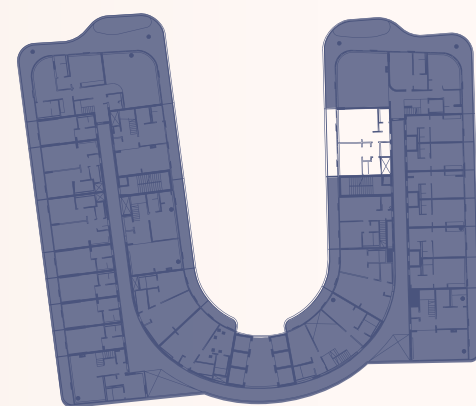
# TYPE 14 1 BEDROOM



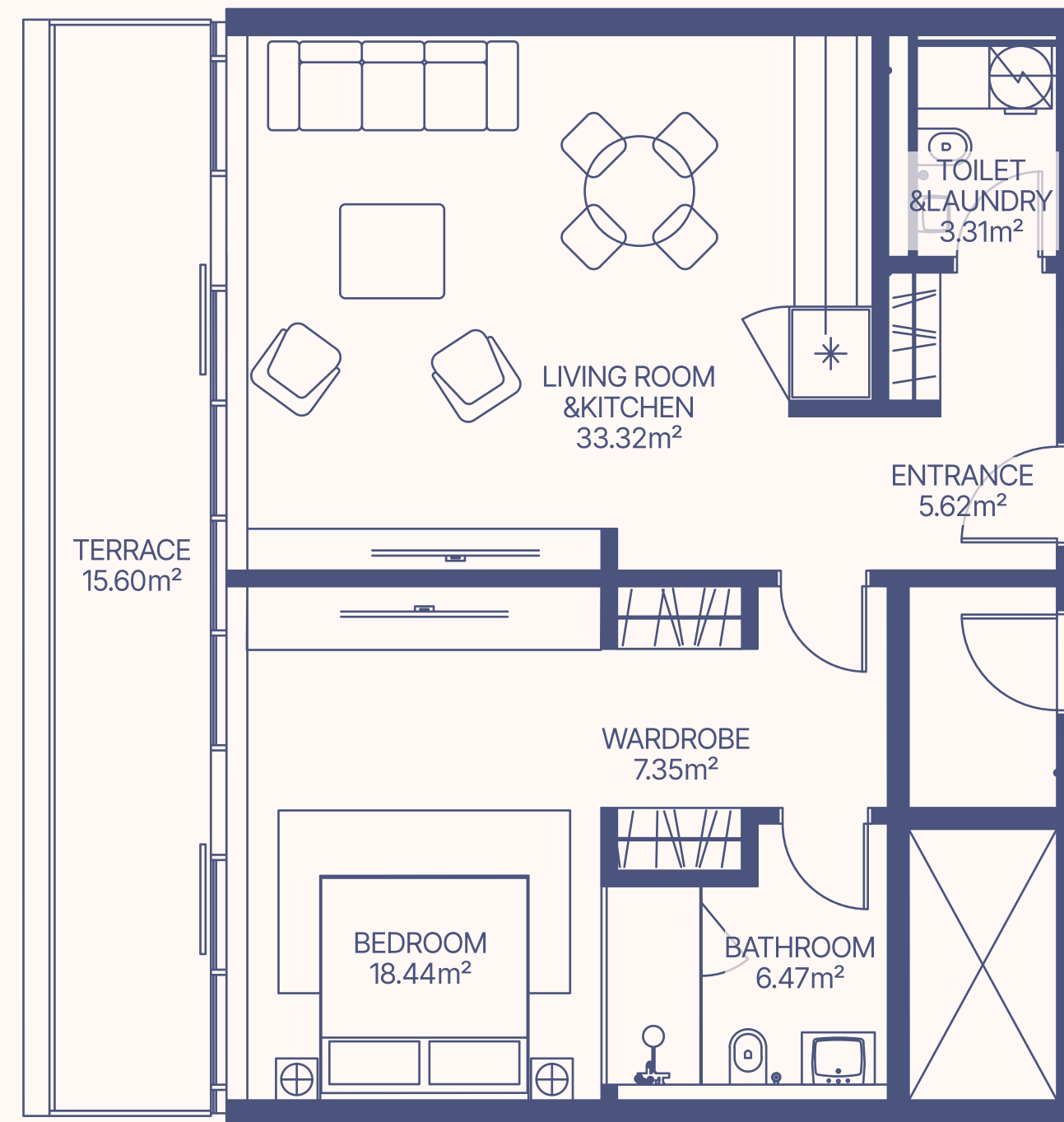
2,3,6,7 floor



sea  
~~~~~

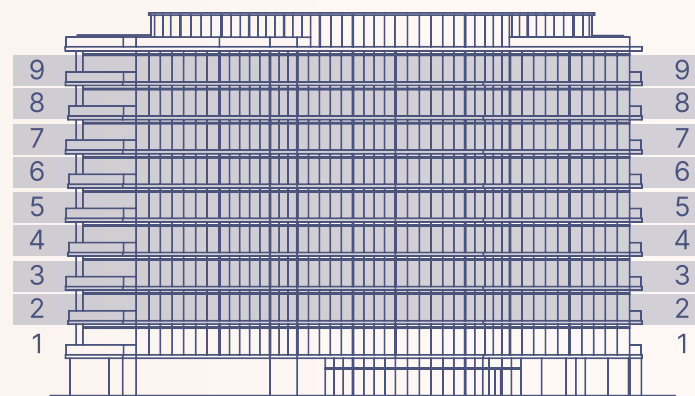


2,3,6,7 floor



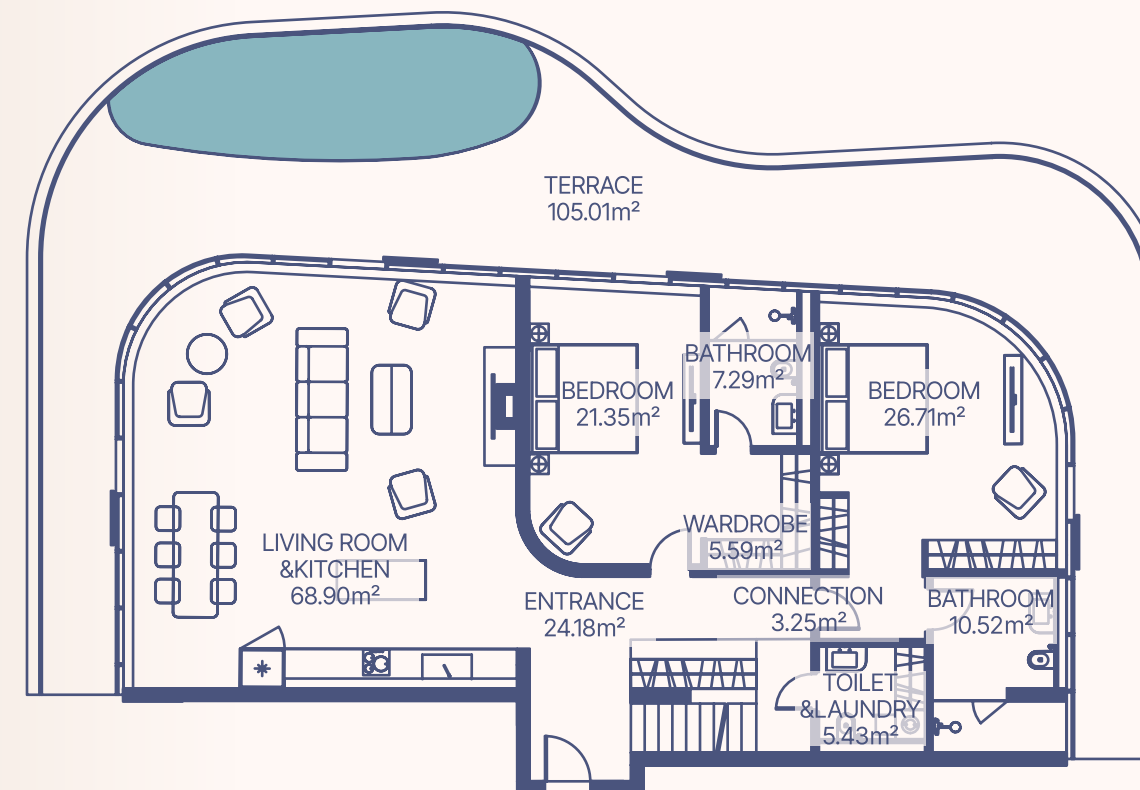
| Apartment Number   | Apartment Area       |                        | Balcony Area        |                        | Total Area           |                        |
|--------------------|----------------------|------------------------|---------------------|------------------------|----------------------|------------------------|
| 217, 315, 616, 712 | 74.51 m <sup>2</sup> | 801.73 ft <sup>2</sup> | 15.6 m <sup>2</sup> | 167.86 ft <sup>2</sup> | 90.11 m <sup>2</sup> | 969.58 ft <sup>2</sup> |

# TYPE 15 4 BEDROOM DUPLEX

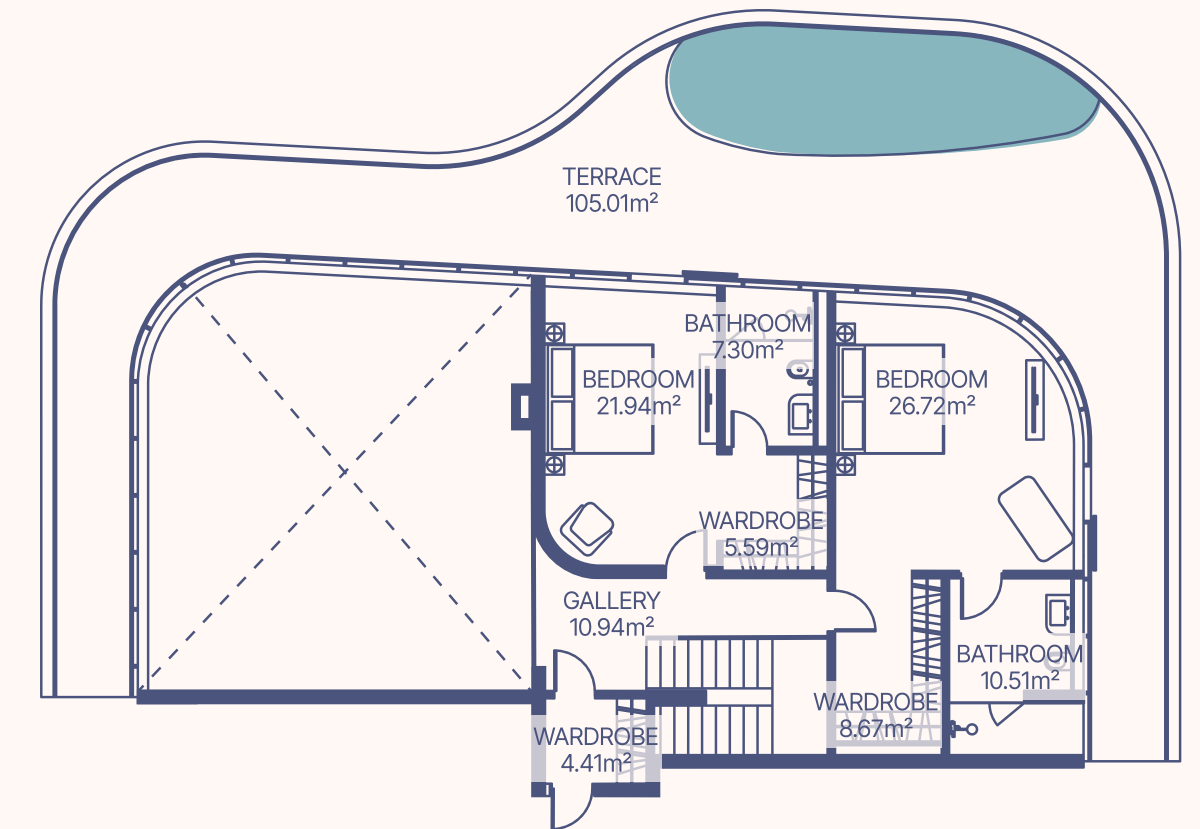


2-3, 4-5, 6-7, 8-9 floor

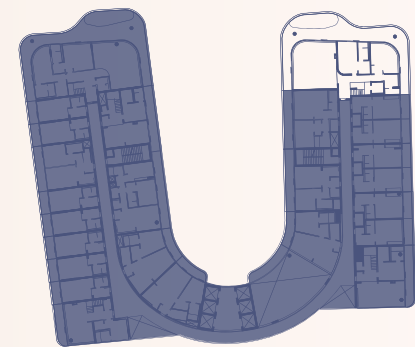
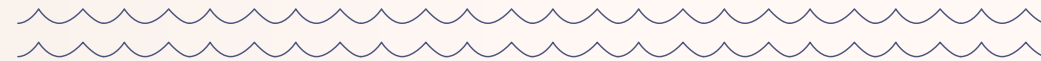
LOWER LEVEL



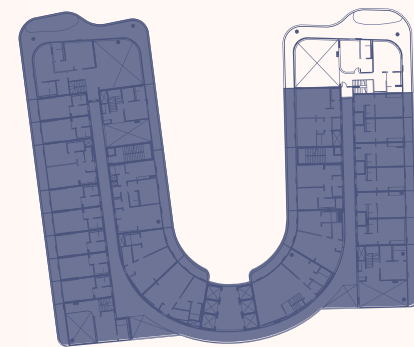
UPPER LEVEL



sea



Lower Level

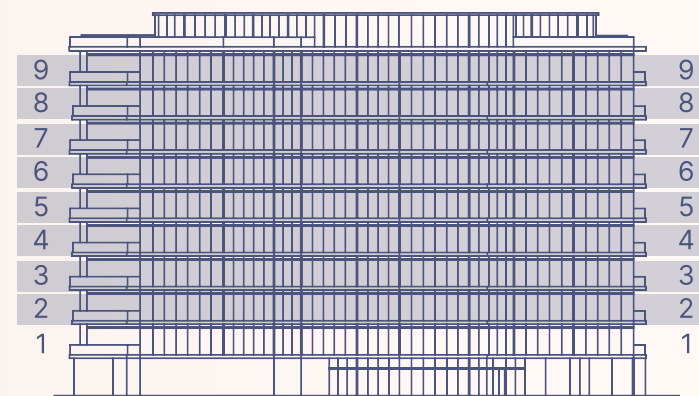


Upper Level

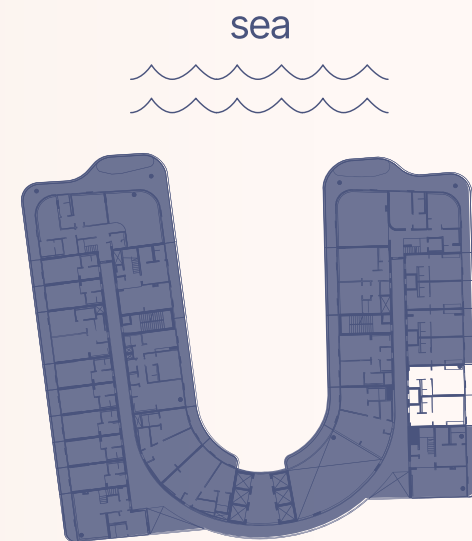
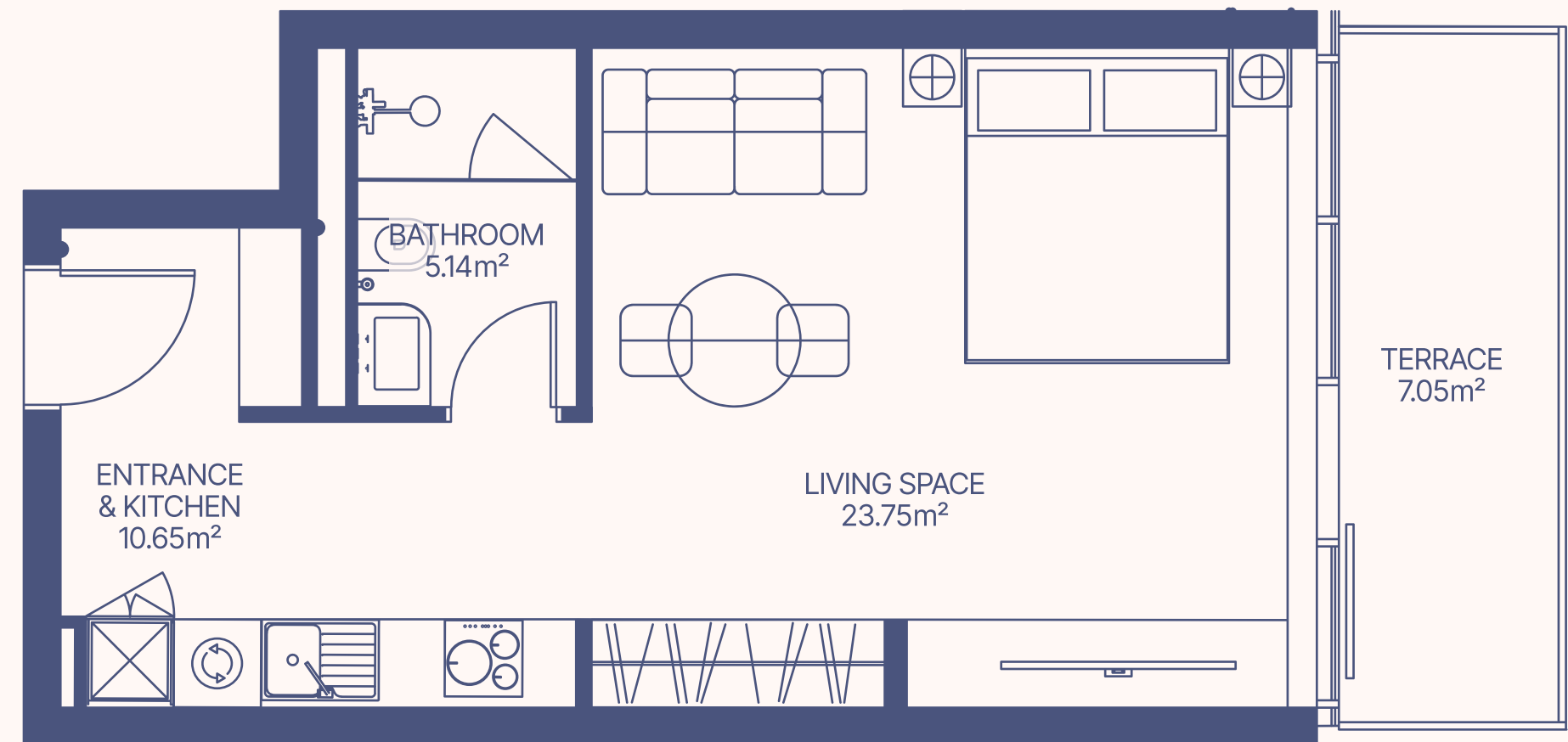
2-3, 4-5, 6-7, 8-9 floor

| Apartment Number   | Apartment Area        |                      | Balcony Area          |                       | Total Area Per Floor    |                         |
|--------------------|-----------------------|----------------------|-----------------------|-----------------------|-------------------------|-------------------------|
|                    | Lower Level           | Upper Level          | Lower Level           | Upper Level           | Lower Level             | Upper Level             |
| 218, 418, 617, 819 | 173.22 m <sup>2</sup> | 96.08 m <sup>2</sup> | 105.01 m <sup>2</sup> | 105.01 m <sup>2</sup> | 1129.91 ft <sup>2</sup> | 1129.91 ft <sup>2</sup> |
| Total Area         | 269.3 m <sup>2</sup>  |                      | 210.02 m <sup>2</sup> |                       | 2259.82 ft <sup>2</sup> | 5157.48 ft <sup>2</sup> |

# TYPE 16A STUDIO



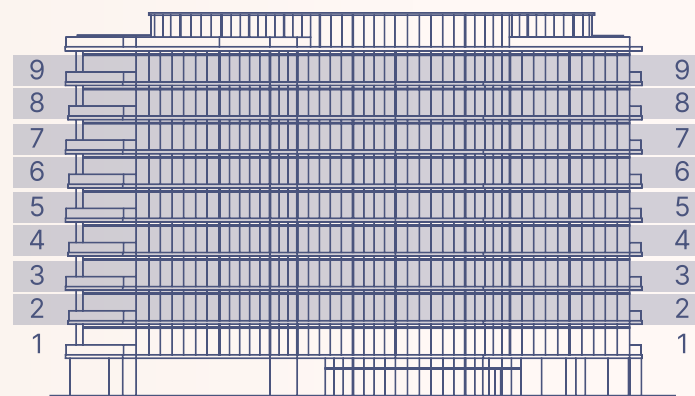
2-9 floor



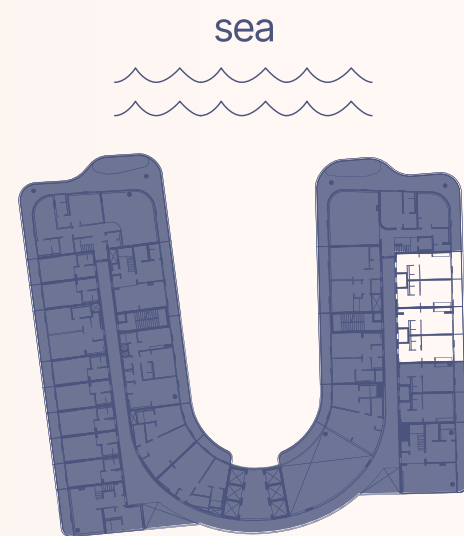
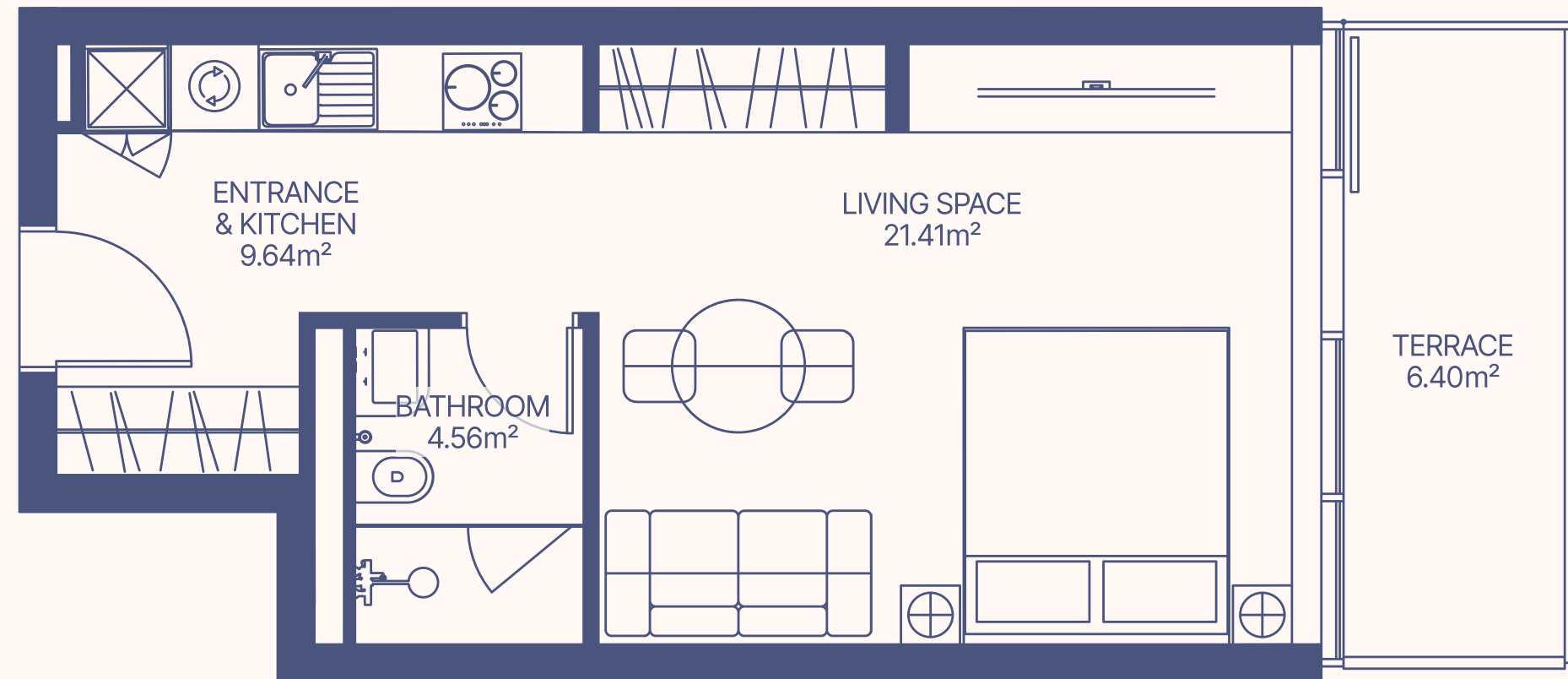
2-9 floor

| Apartment Number                                                               | Apartment Area       |                        | Balcony Area        |                       | Total Area           |                        |
|--------------------------------------------------------------------------------|----------------------|------------------------|---------------------|-----------------------|----------------------|------------------------|
| 223, 224, 320, 321, 423, 424, 519, 520, 622, 623, 717, 718, 824, 825, 918, 919 | 39.54 m <sup>2</sup> | 425.45 ft <sup>2</sup> | 7.05 m <sup>2</sup> | 75.86 ft <sup>2</sup> | 46.59 m <sup>2</sup> | 501.31 ft <sup>2</sup> |

# TYPE 16B STUDIO



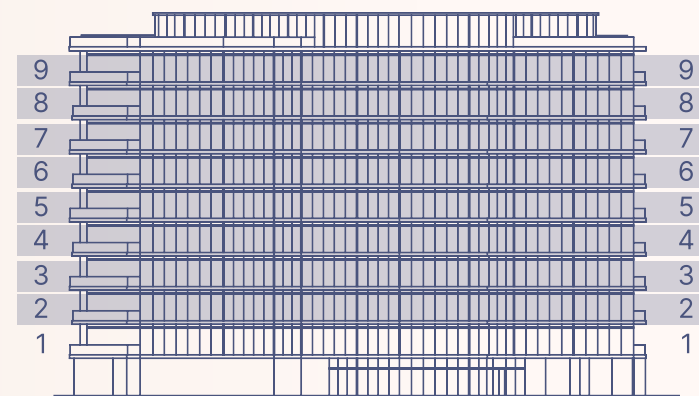
2-9 floor



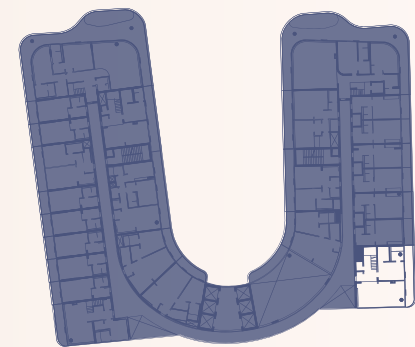
2-9 floor

| Apartment Number                                                                                                                                               | Apartment Area       |                        | Balcony Area       |                       | Total Area           |                        |
|----------------------------------------------------------------------------------------------------------------------------------------------------------------|----------------------|------------------------|--------------------|-----------------------|----------------------|------------------------|
| 219, 220, 221, 222, 316, 317, 318, 319, 419, 420, 421, 422, 515, 516, 517, 518, 618, 619, 620, 621, 713, 714, 715, 716, 820, 821, 822, 823, 914, 915, 916, 917 | 35.59 m <sup>2</sup> | 382.95 ft <sup>2</sup> | 6.4 m <sup>2</sup> | 68.86 ft <sup>2</sup> | 41.99 m <sup>2</sup> | 451.81 ft <sup>2</sup> |

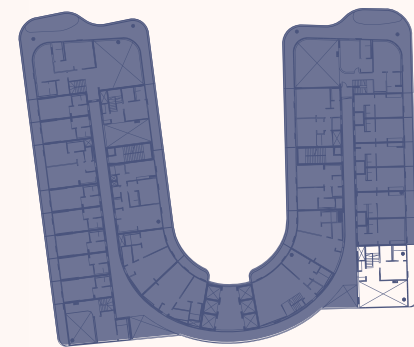
# TYPE 17 2 BEDROOM DUPLEX



2-3, 4-5, 6-7, 8-9 floor



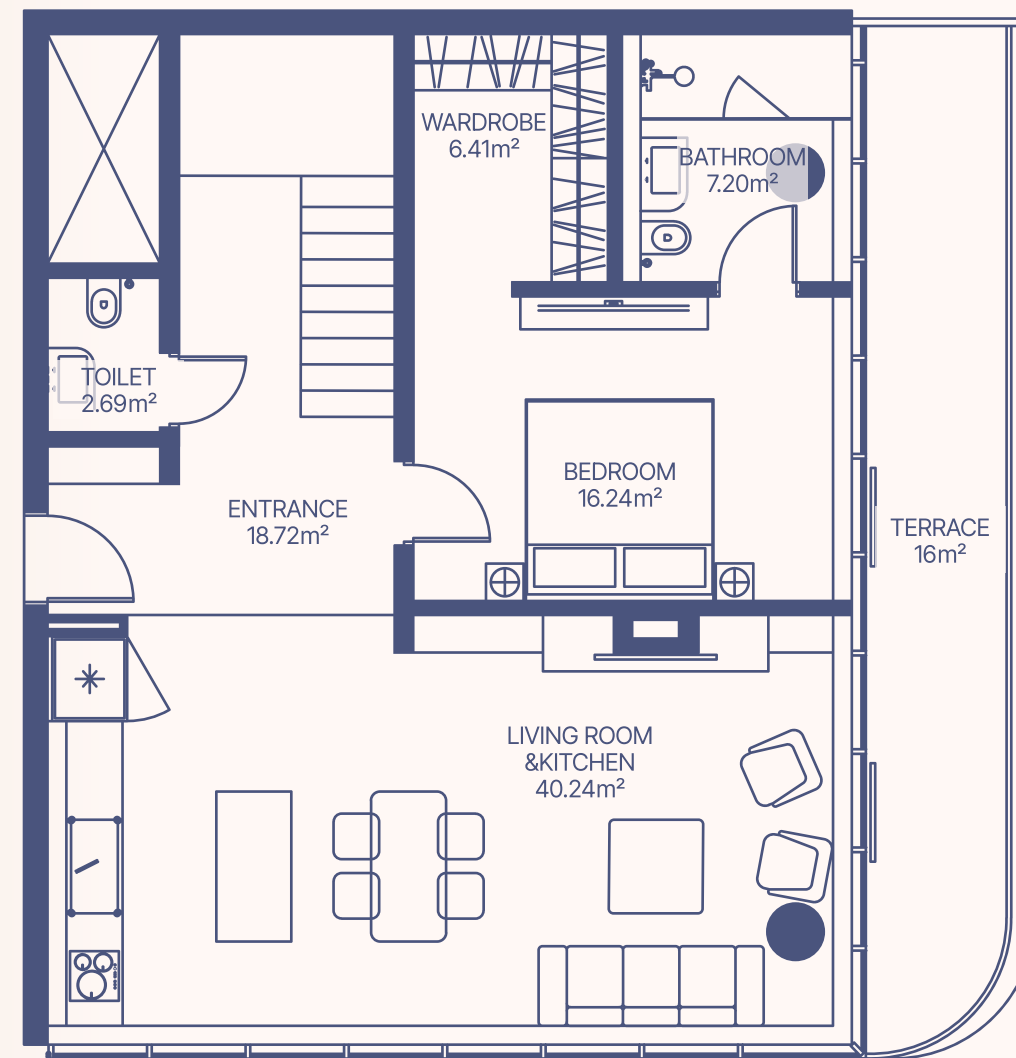
Lower Level



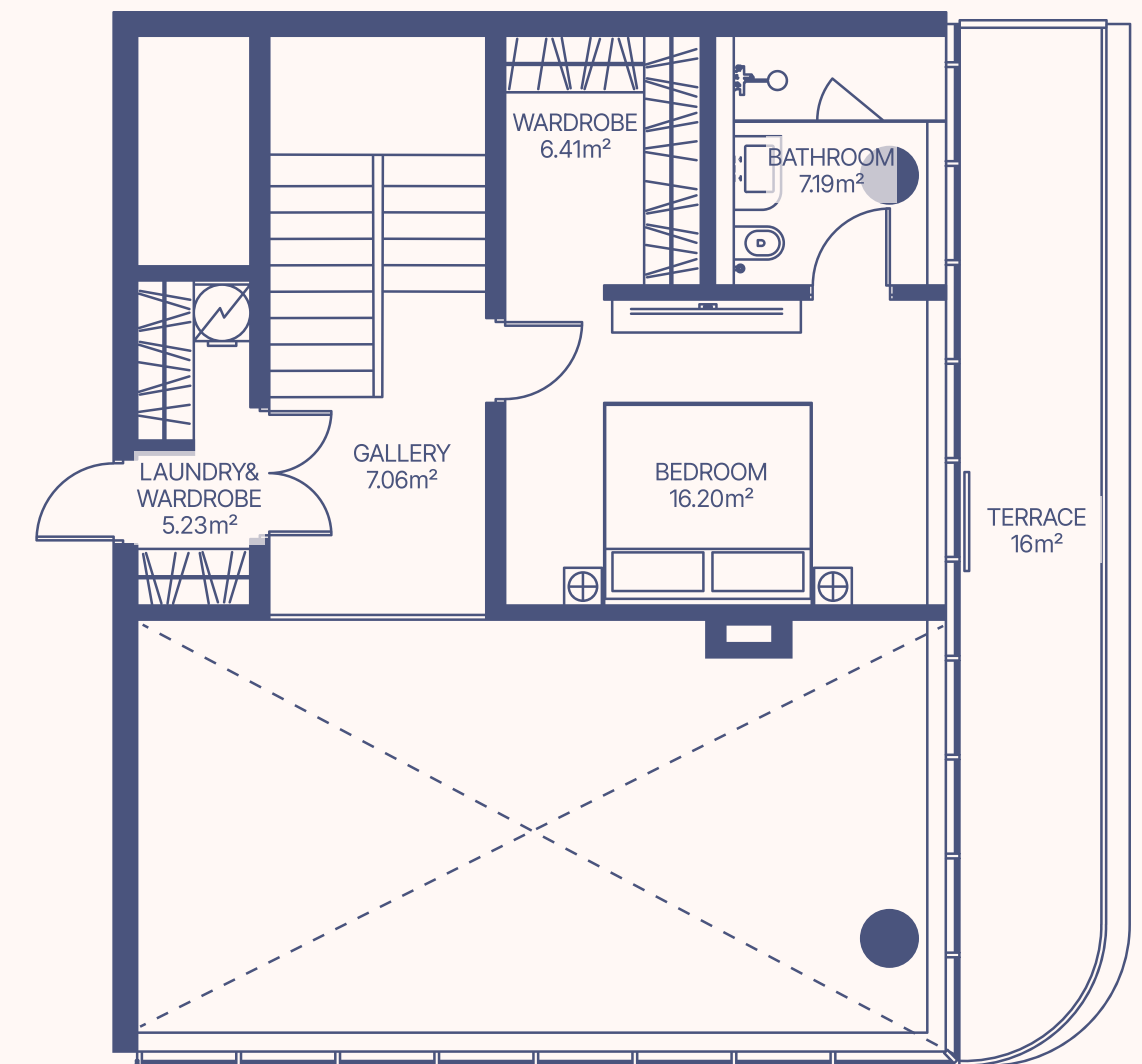
Upper Level

2-3, 4-5, 6-7, 8-9 floor

LOWER LEVEL



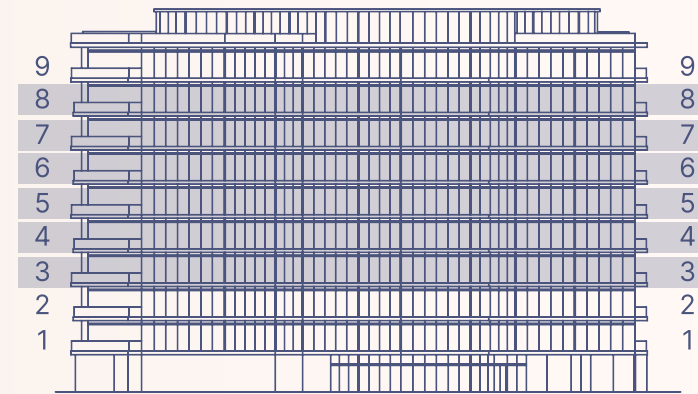
UPPER LEVEL



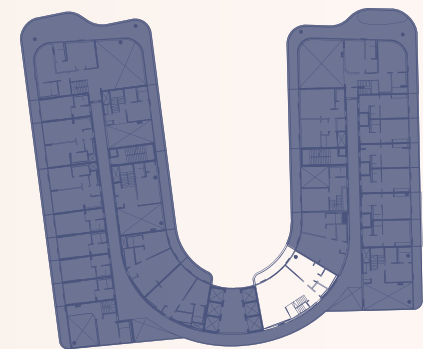
| Apartment Number   | Apartment Area         |                         | Balcony Area           |                        | Total Area Per Floor   |                         |
|--------------------|------------------------|-------------------------|------------------------|------------------------|------------------------|-------------------------|
|                    | Lower Level            | Upper Level             | Lower Level            | Upper Level            | Lower Level            | Upper Level             |
| 225, 425, 624, 826 | 91.5 m <sup>2</sup>    | 42.09 m <sup>2</sup>    | 16 m <sup>2</sup>      | 16 m <sup>2</sup>      | 107.5 m <sup>2</sup>   | 58.09 m <sup>2</sup>    |
|                    | 984.54 ft <sup>2</sup> | 452.89 ft <sup>2</sup>  | 172.16 ft <sup>2</sup> | 172.16 ft <sup>2</sup> | 1156.7 ft <sup>2</sup> | 625.05 ft <sup>2</sup>  |
| Total Area         | 133.59 m <sup>2</sup>  | 1437.43 ft <sup>2</sup> | 32 m <sup>2</sup>      | 344.32 ft <sup>2</sup> | 165.59 m <sup>2</sup>  | 1781.75 ft <sup>2</sup> |

# TYPE 18

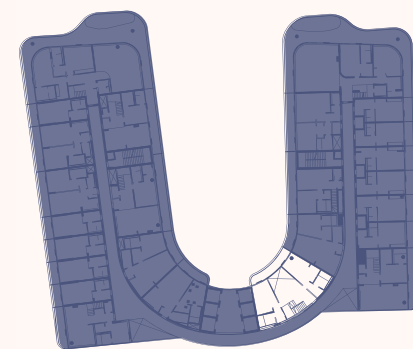
## 3 BEDROOM DUPLEX



3-4, 5-6, 7-8 floor



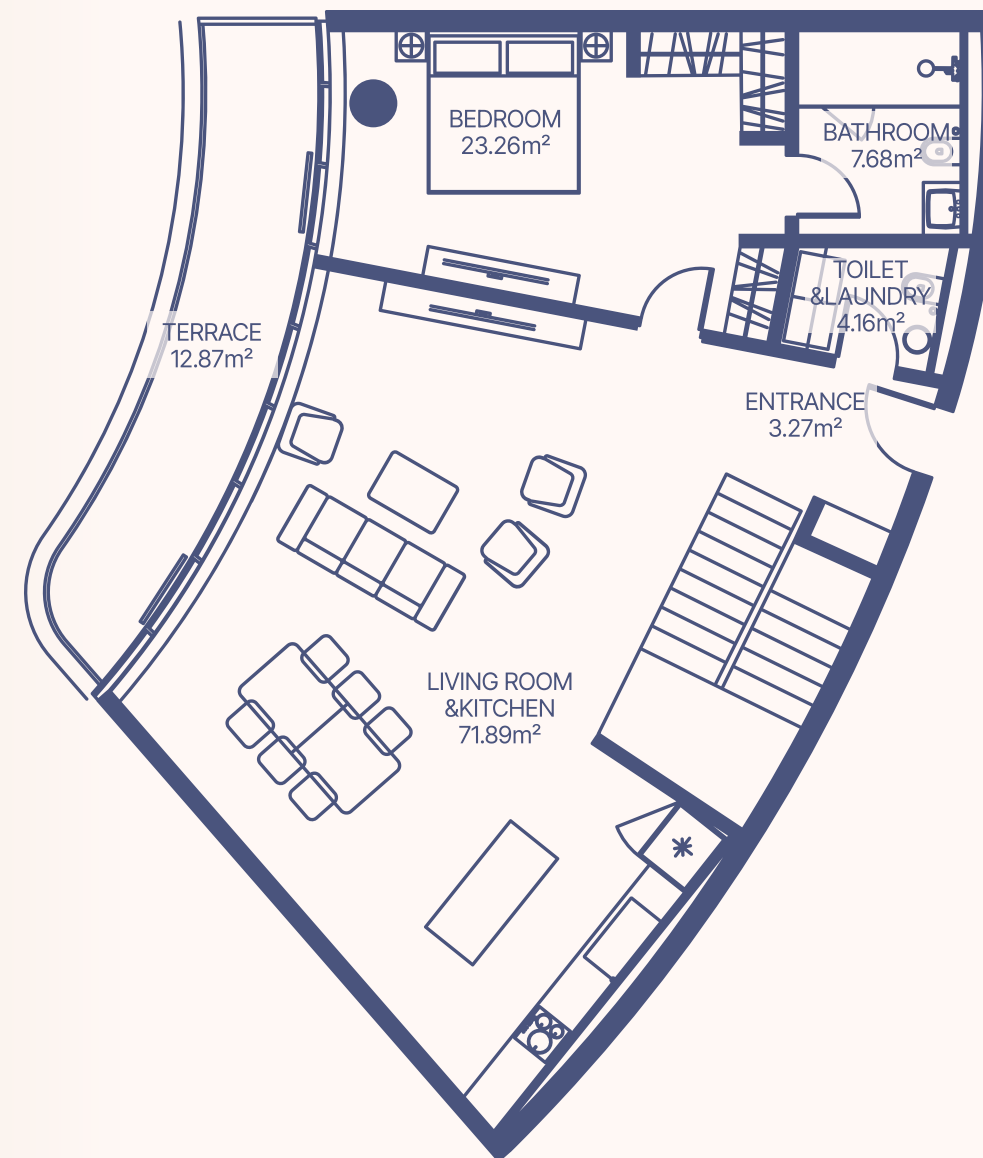
Lower Level



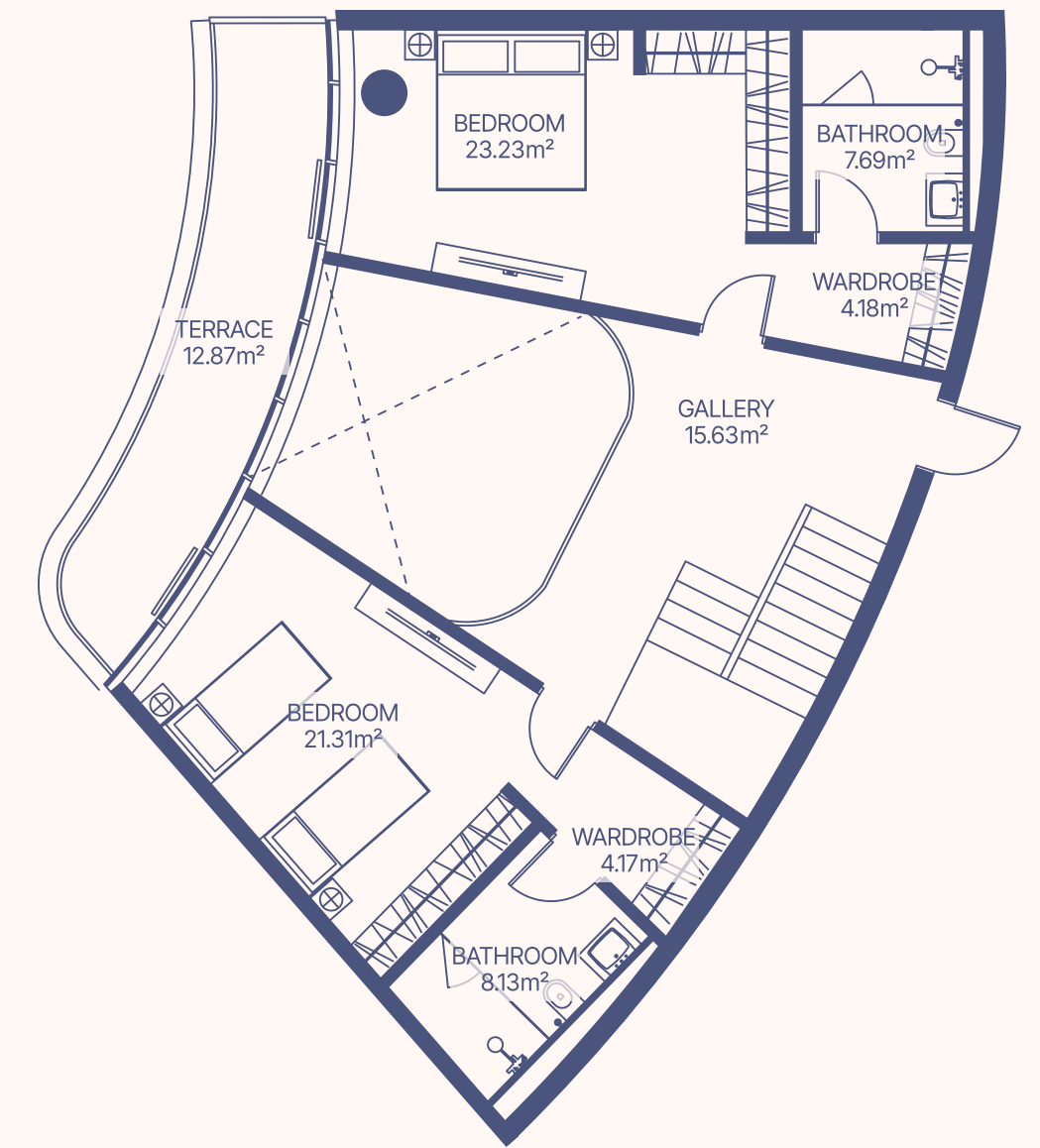
Upper Level

3-4, 5-6, 7-8 floor

LOWER LEVEL

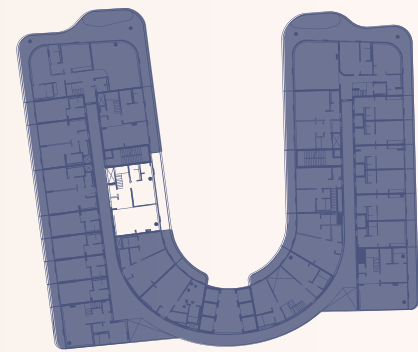
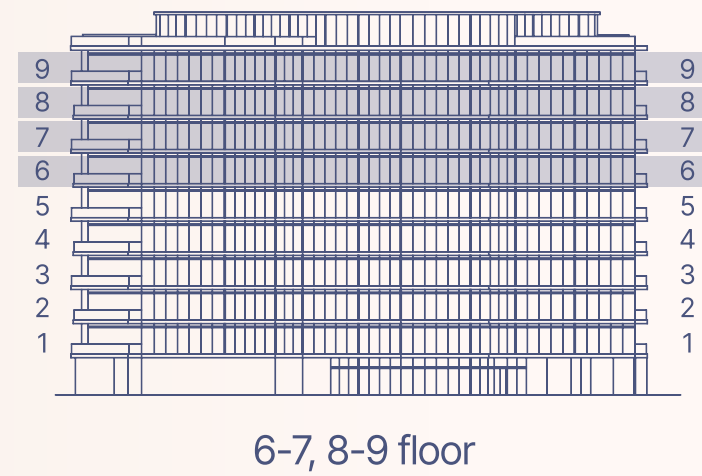


UPPER LEVEL

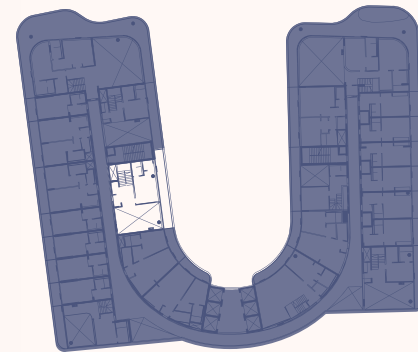


| Apartment Number | Apartment Area         |                        | Balcony Area         |                        | Total Area Per Floor   |                         |
|------------------|------------------------|------------------------|----------------------|------------------------|------------------------|-------------------------|
|                  | Lower Level            | Upper Level            | Lower Level          | Upper Level            | Lower Level            | Upper Level             |
| 312, 512, 710    | 110.26 m <sup>2</sup>  | 84.34 m <sup>2</sup>   | 12.87 m <sup>2</sup> | 12.87 m <sup>2</sup>   | 138.48 ft <sup>2</sup> | 138.48 ft <sup>2</sup>  |
|                  | 1186.4 ft <sup>2</sup> | 907.5 ft <sup>2</sup>  |                      |                        | 123.13 m <sup>2</sup>  | 1045.98 ft <sup>2</sup> |
| Total Area       | 194.6 m <sup>2</sup>   | 2093.9 ft <sup>2</sup> | 25.74 m <sup>2</sup> | 276.96 ft <sup>2</sup> | 220.34 m <sup>2</sup>  | 2370.86 ft <sup>2</sup> |

# TYPE 19 2 BEDROOM DUPLEX



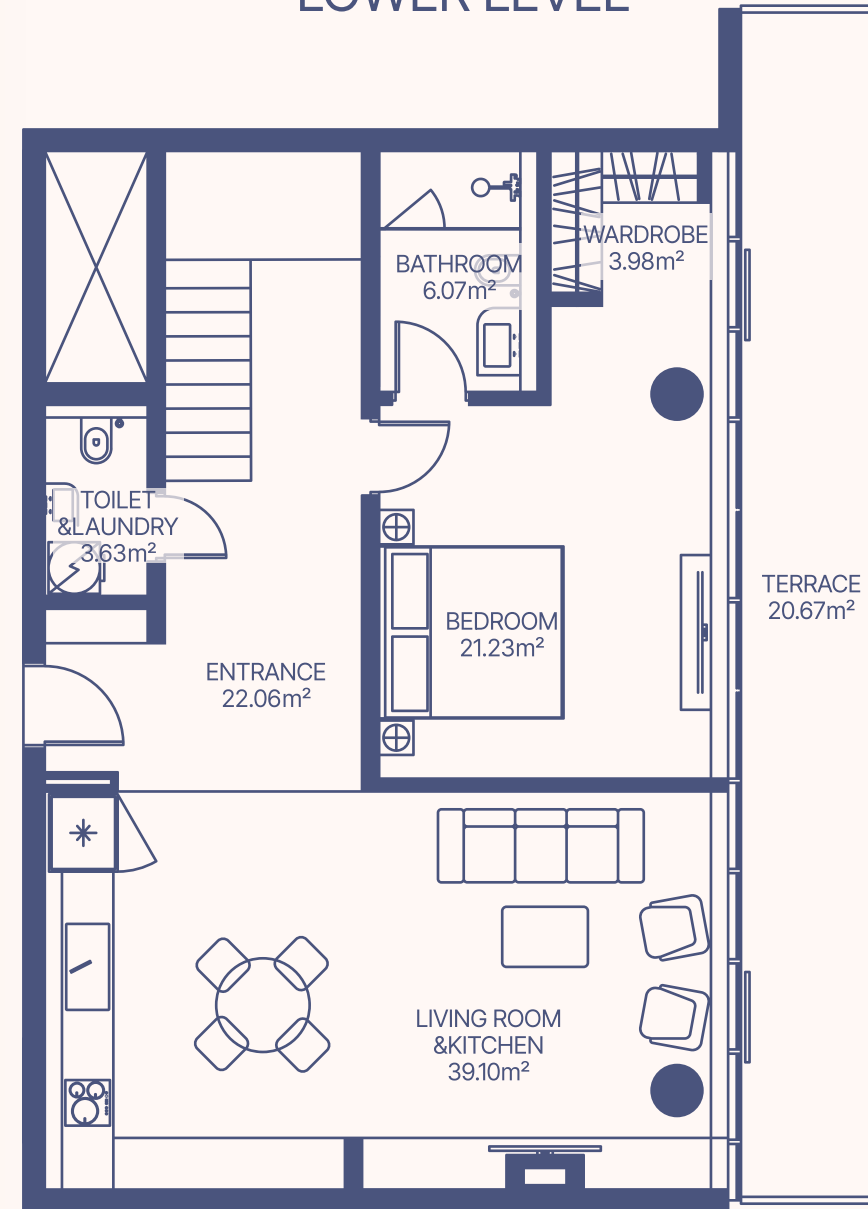
Lower Level



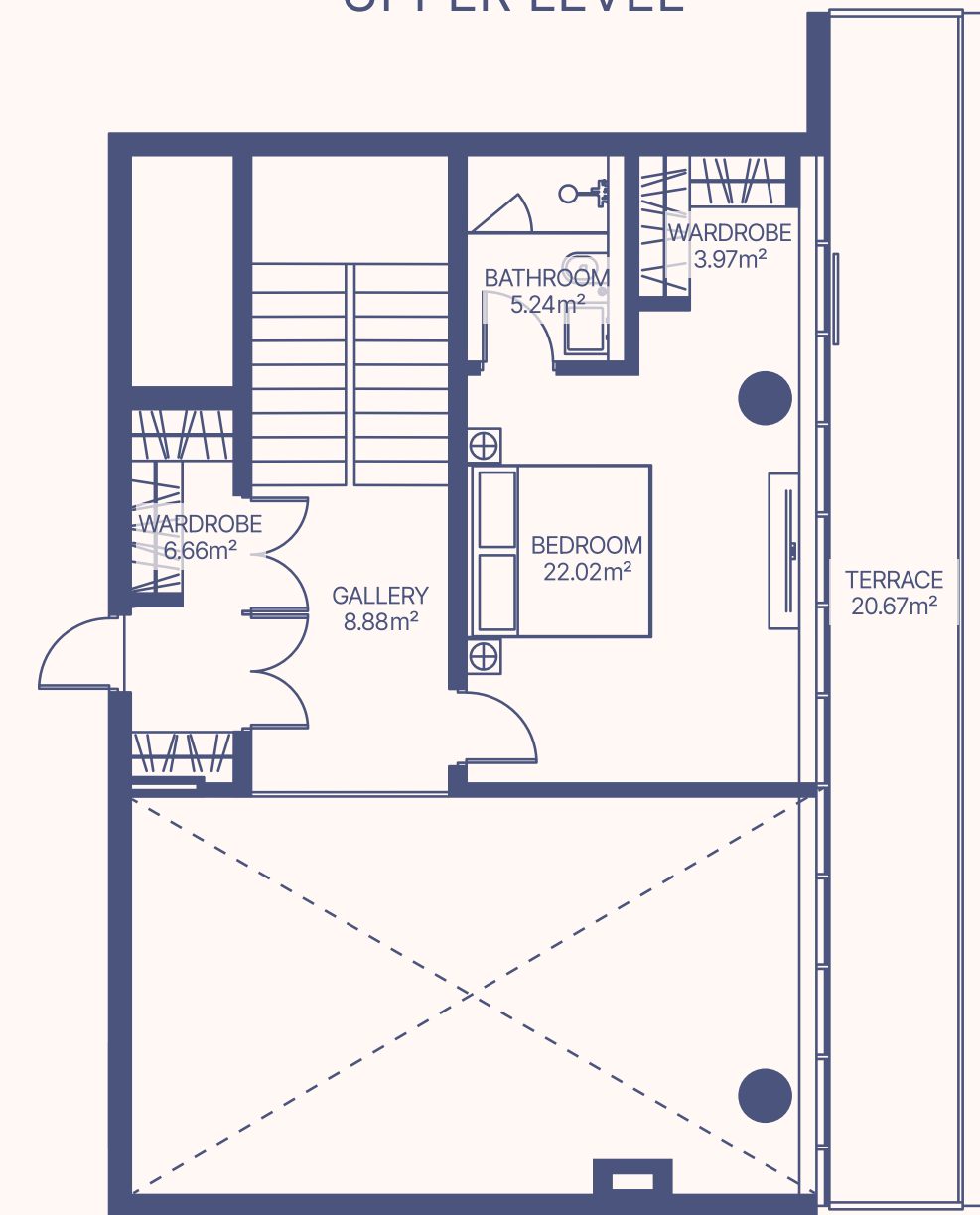
Upper Level

6-7, 8-9 floor

LOWER LEVEL

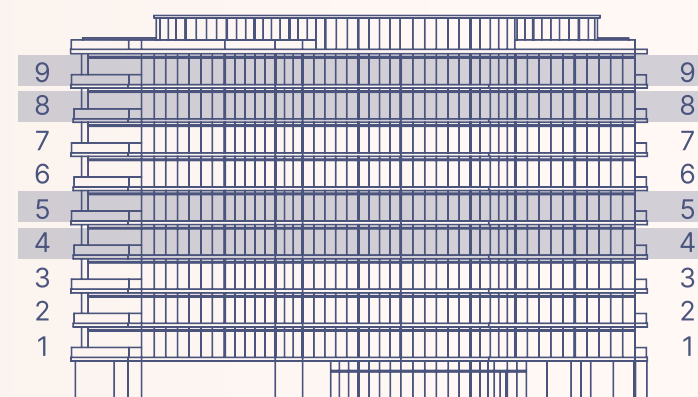


UPPER LEVEL



| Apartment Number | Apartment Area          |                         | Balcony Area           |                        | Total Area Per Floor    |                         |
|------------------|-------------------------|-------------------------|------------------------|------------------------|-------------------------|-------------------------|
|                  | Lower Level             | Upper Level             | Lower Level            | Upper Level            | Lower Level             | Upper Level             |
| 611, 813         | 96.07 m <sup>2</sup>    | 46.77 m <sup>2</sup>    | 20.67 m <sup>2</sup>   | 20.67 m <sup>2</sup>   | 116.74 m <sup>2</sup>   | 67.44 m <sup>2</sup>    |
|                  | 1033.71 ft <sup>2</sup> | 503.25 ft <sup>2</sup>  | 222.41 ft <sup>2</sup> | 222.41 ft <sup>2</sup> | 1256.12 ft <sup>2</sup> | 725.65 ft <sup>2</sup>  |
| Total Area       | 142.84 m <sup>2</sup>   | 1536.96 ft <sup>2</sup> | 41.34 m <sup>2</sup>   | 444.82 ft <sup>2</sup> | 184.18 m <sup>2</sup>   | 1981.78 ft <sup>2</sup> |

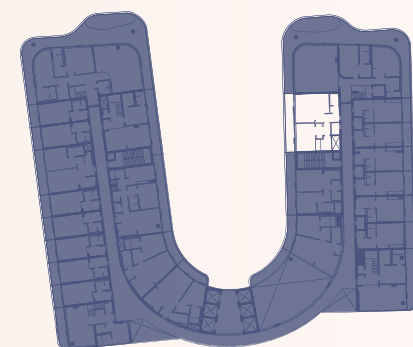
# TYPE 20 2 BEDROOM DUPLEX



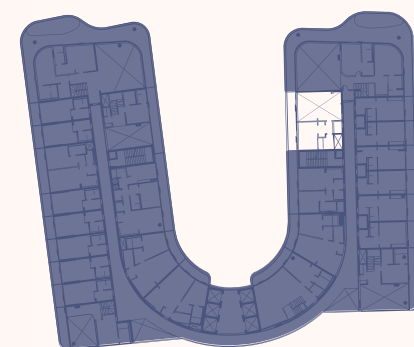
4-5, 8-9 floor



sea



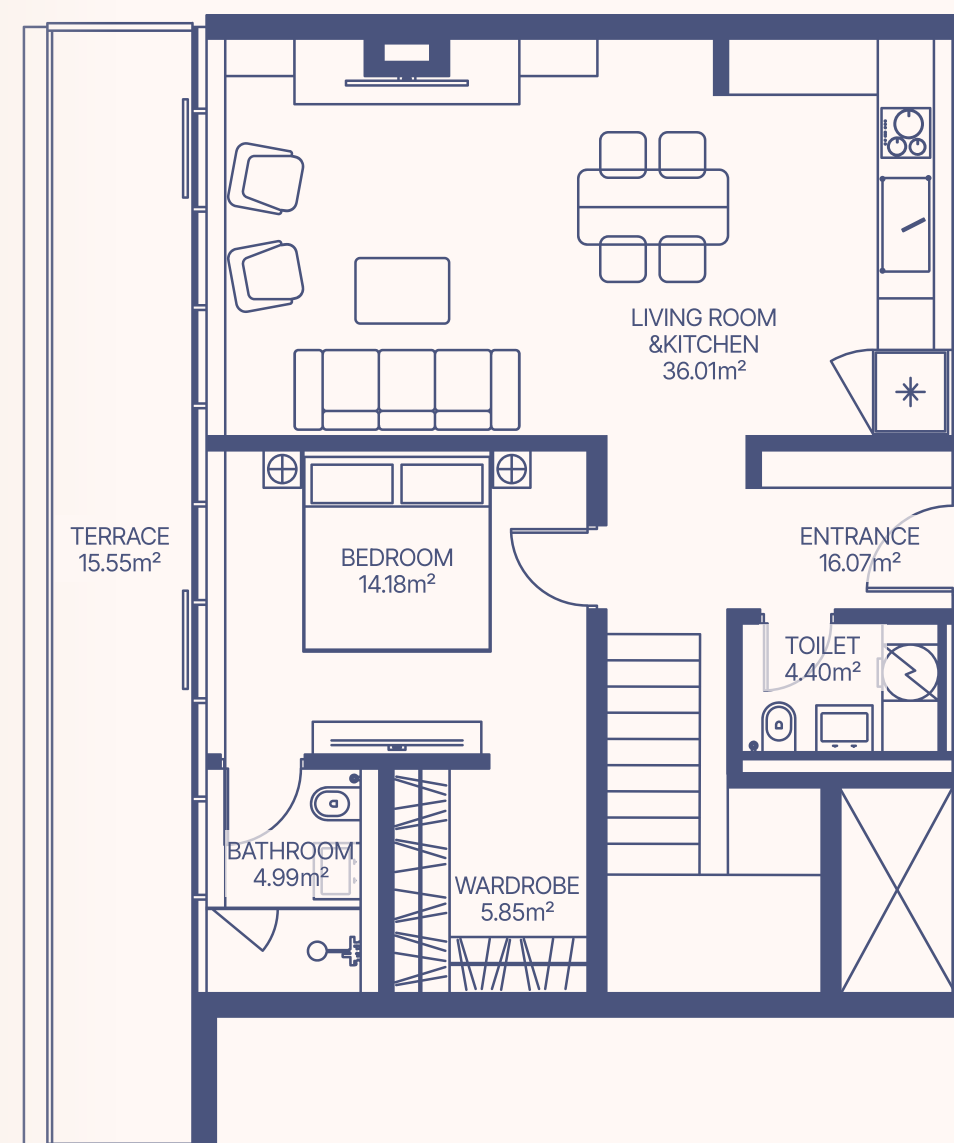
Lower Level



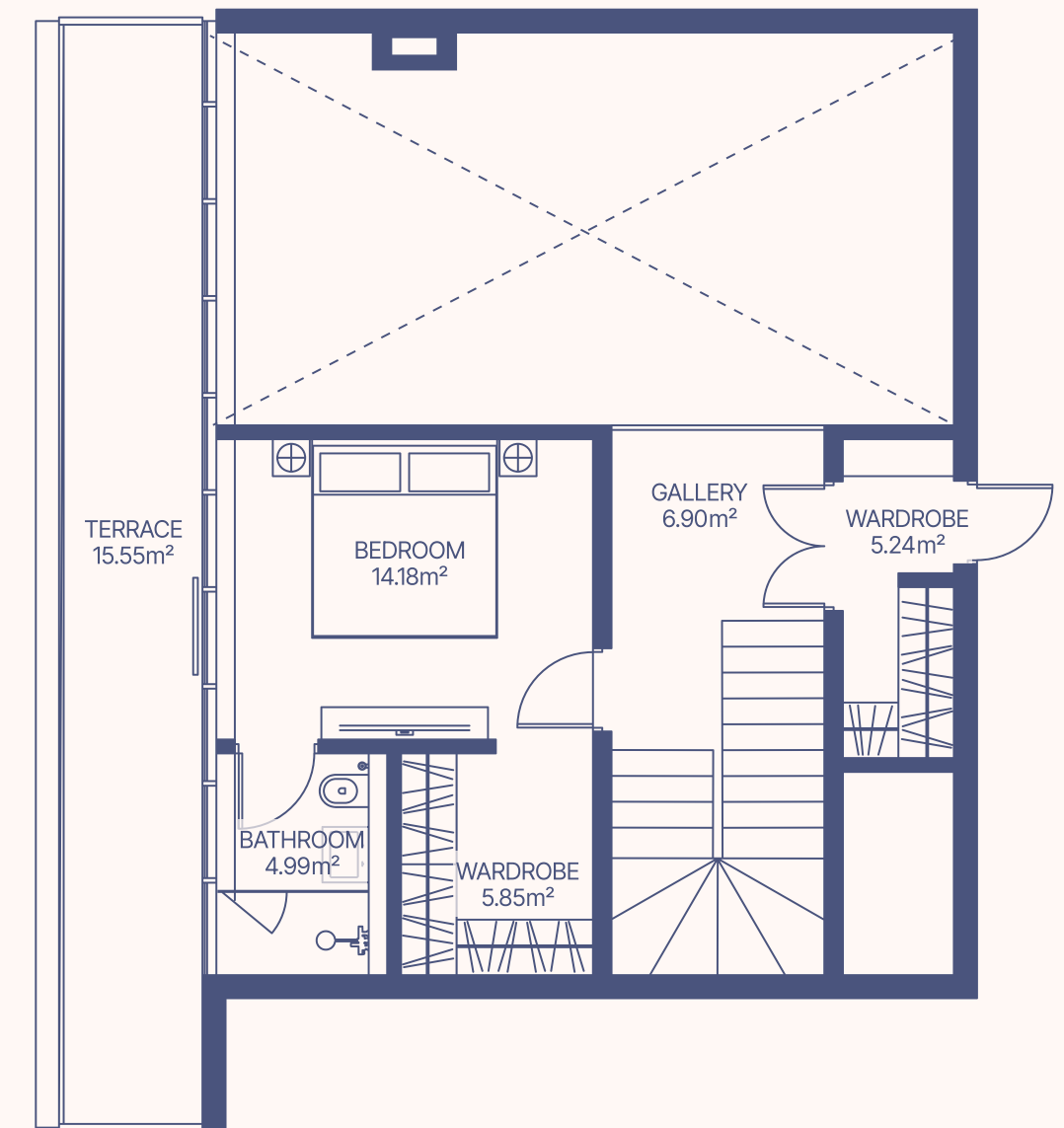
Upper Level

4-5, 8-9 floor

LOWER LEVEL

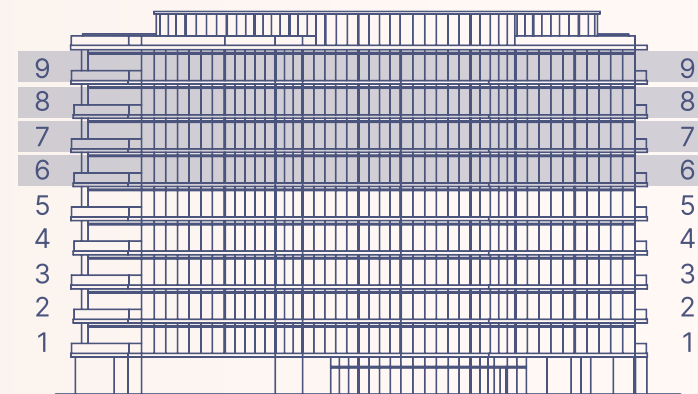


UPPER LEVEL



| Apartment Number | Apartment Area         |                         | Balcony Area         |                        | Total Area Per Floor  |                         |
|------------------|------------------------|-------------------------|----------------------|------------------------|-----------------------|-------------------------|
|                  | Lower Level            | Upper Level             | Lower Level          | Upper Level            | Lower Level           | Upper Level             |
| 417, 818         | 81.5 m <sup>2</sup>    | 37.16 m <sup>2</sup>    | 15.55 m <sup>2</sup> | 167.32 ft <sup>2</sup> | 97.05 m <sup>2</sup>  | 1044.26 ft <sup>2</sup> |
|                  | 876.94 ft <sup>2</sup> | 399.84 ft <sup>2</sup>  | 15.55 m <sup>2</sup> | 167.32 ft <sup>2</sup> | 52.71 m <sup>2</sup>  | 567.16 ft <sup>2</sup>  |
| Total Area       | 118.66 m <sup>2</sup>  | 1276.78 ft <sup>2</sup> | 31.1 m <sup>2</sup>  | 334.64 ft <sup>2</sup> | 149.76 m <sup>2</sup> | 1611.42 ft <sup>2</sup> |

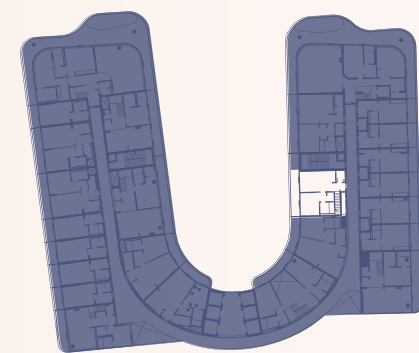
# TYPE 21 2 BEDROOM DUPLEX



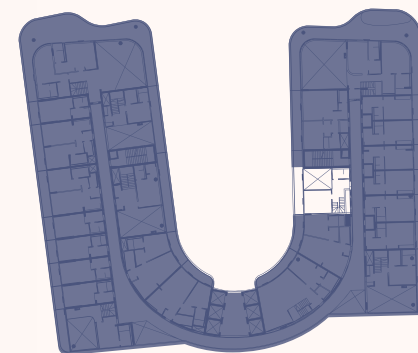
6-7, 8-9 floor



sea



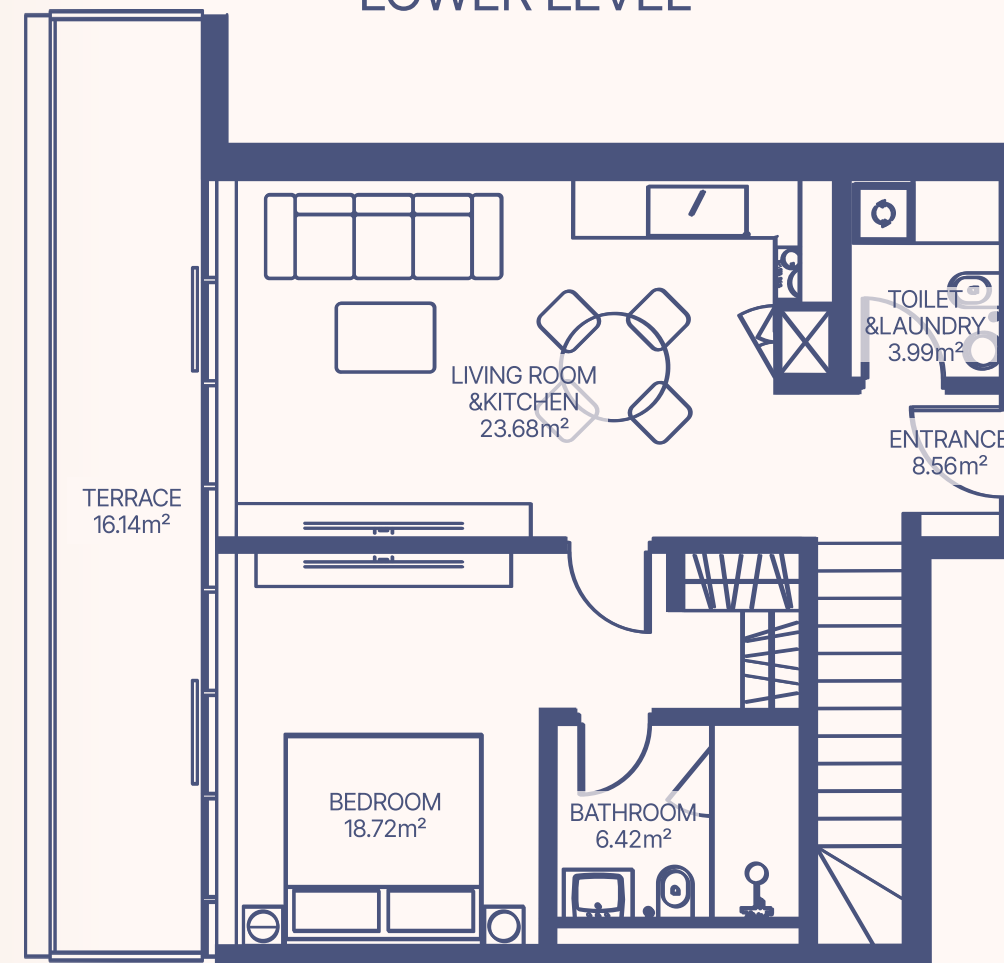
Lower Level



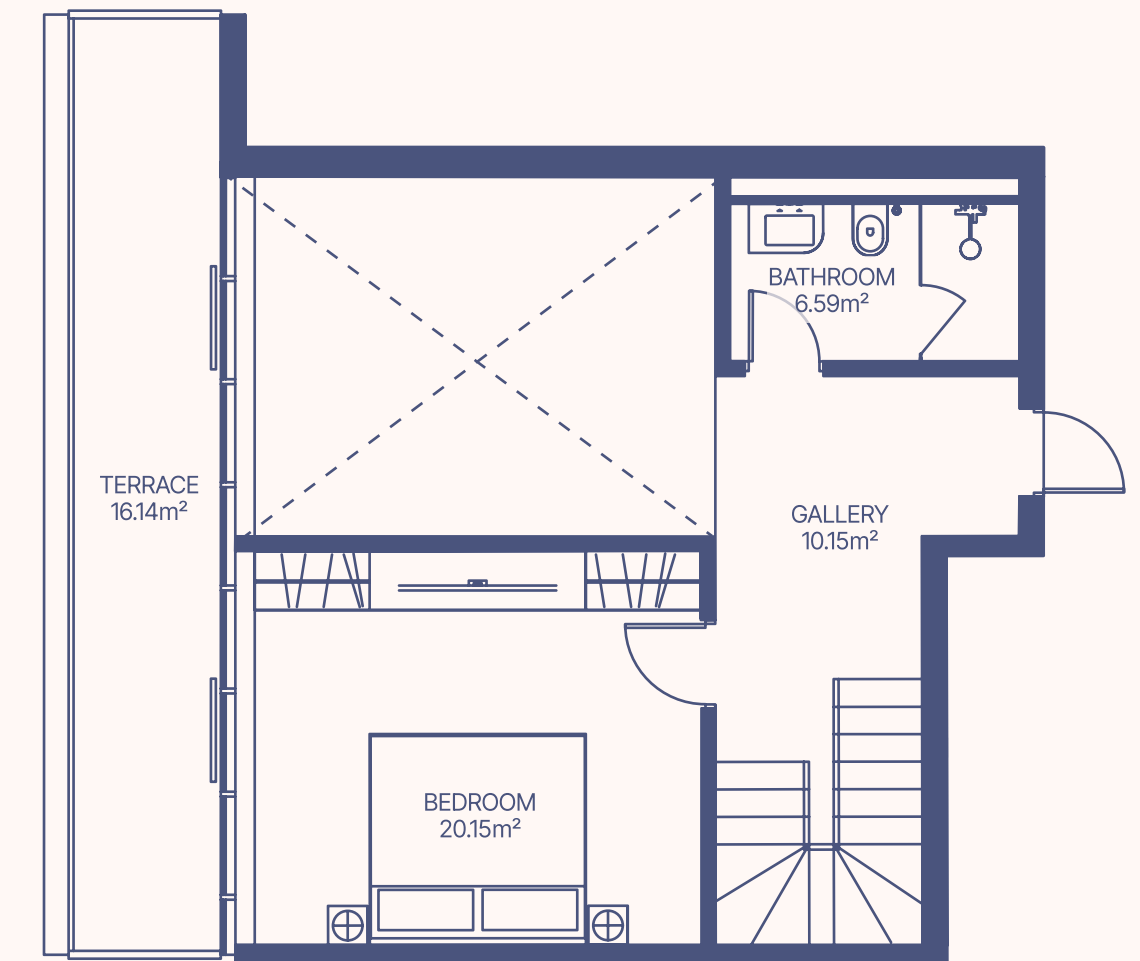
Upper Level

6-7, 8-9 floor

LOWER LEVEL



UPPER LEVEL

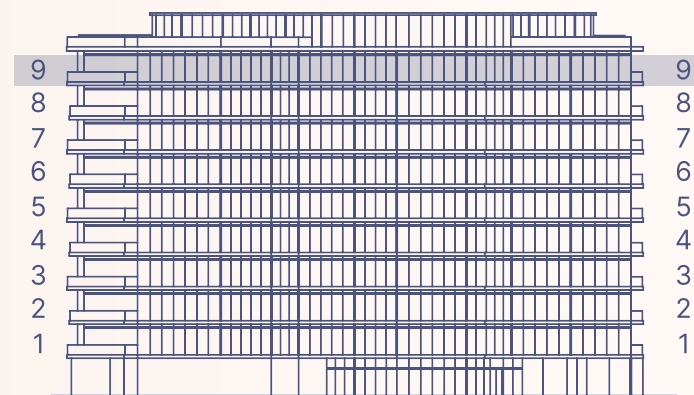


| Apartment Number | Apartment Area       |                      | Balcony Area         |                      | Total Area Per Floor  |                      |
|------------------|----------------------|----------------------|----------------------|----------------------|-----------------------|----------------------|
|                  | Lower Level          | Upper Level          | Lower Level          | Upper Level          | Lower Level           | Upper Level          |
| 615, 817         | 61.37 m <sup>2</sup> | 36.89 m <sup>2</sup> | 16.14 m <sup>2</sup> | 16.14 m <sup>2</sup> | 77.51 m <sup>2</sup>  | 53.03 m <sup>2</sup> |
| Total Area       | 98.26 m <sup>2</sup> | 36.89 m <sup>2</sup> | 32.28 m <sup>2</sup> | 16.14 m <sup>2</sup> | 130.54 m <sup>2</sup> | 53.03 m <sup>2</sup> |

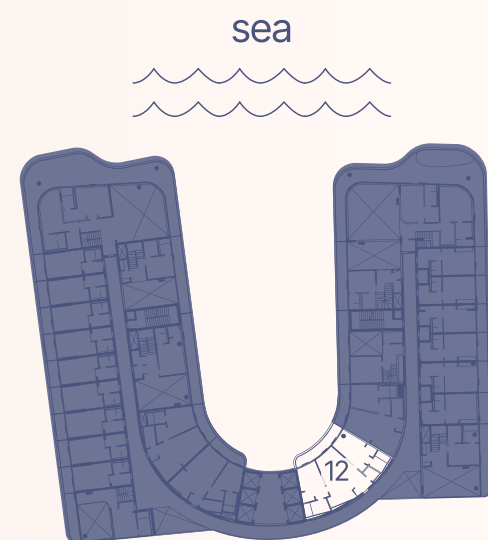
660.34 ft<sup>2</sup> 396.94 ft<sup>2</sup> 173.67 ft<sup>2</sup> 173.67 ft<sup>2</sup> 834.01 ft<sup>2</sup> 570.6 ft<sup>2</sup>

1057.28 ft<sup>2</sup> 347.33 ft<sup>2</sup> 1404.61 ft<sup>2</sup>

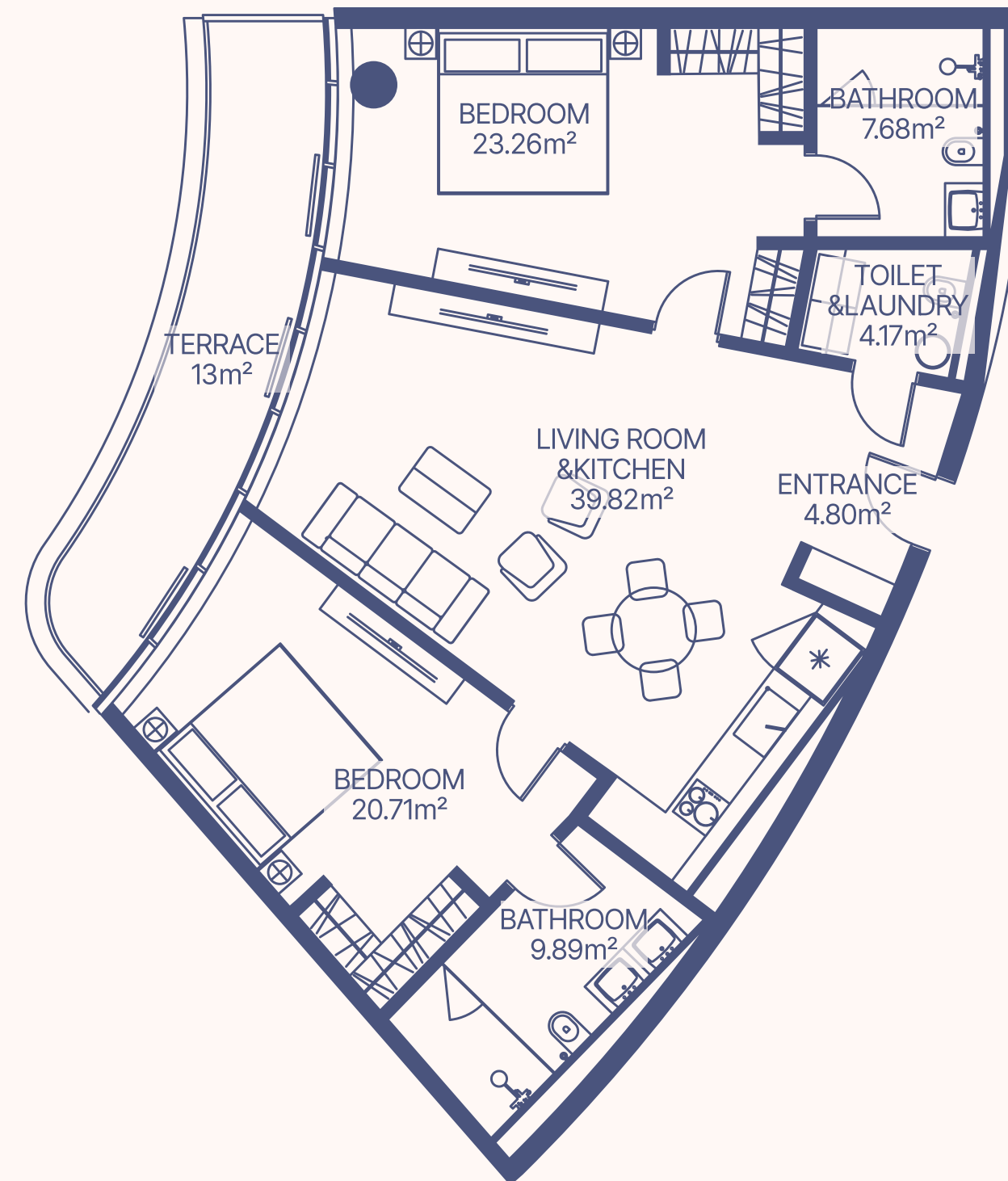
# TYPE 22 2 BEDROOM



9 floor



9 floor



| Apartment Number | Apartment Area        |                         | Balcony Area      |                        | Total Area            |                         |
|------------------|-----------------------|-------------------------|-------------------|------------------------|-----------------------|-------------------------|
| 912              | 110.33 m <sup>2</sup> | 1187.15 ft <sup>2</sup> | 13 m <sup>2</sup> | 139.88 ft <sup>2</sup> | 123.33 m <sup>2</sup> | 1327.03 ft <sup>2</sup> |