



R

BAY RESIDENCES



RAS AL KHAIMAH

A Rising Star

PROSPEROUS AND AMBITIOUS, RAS AL KHAIMAH IS EXPERIENCING NEW ENERGY

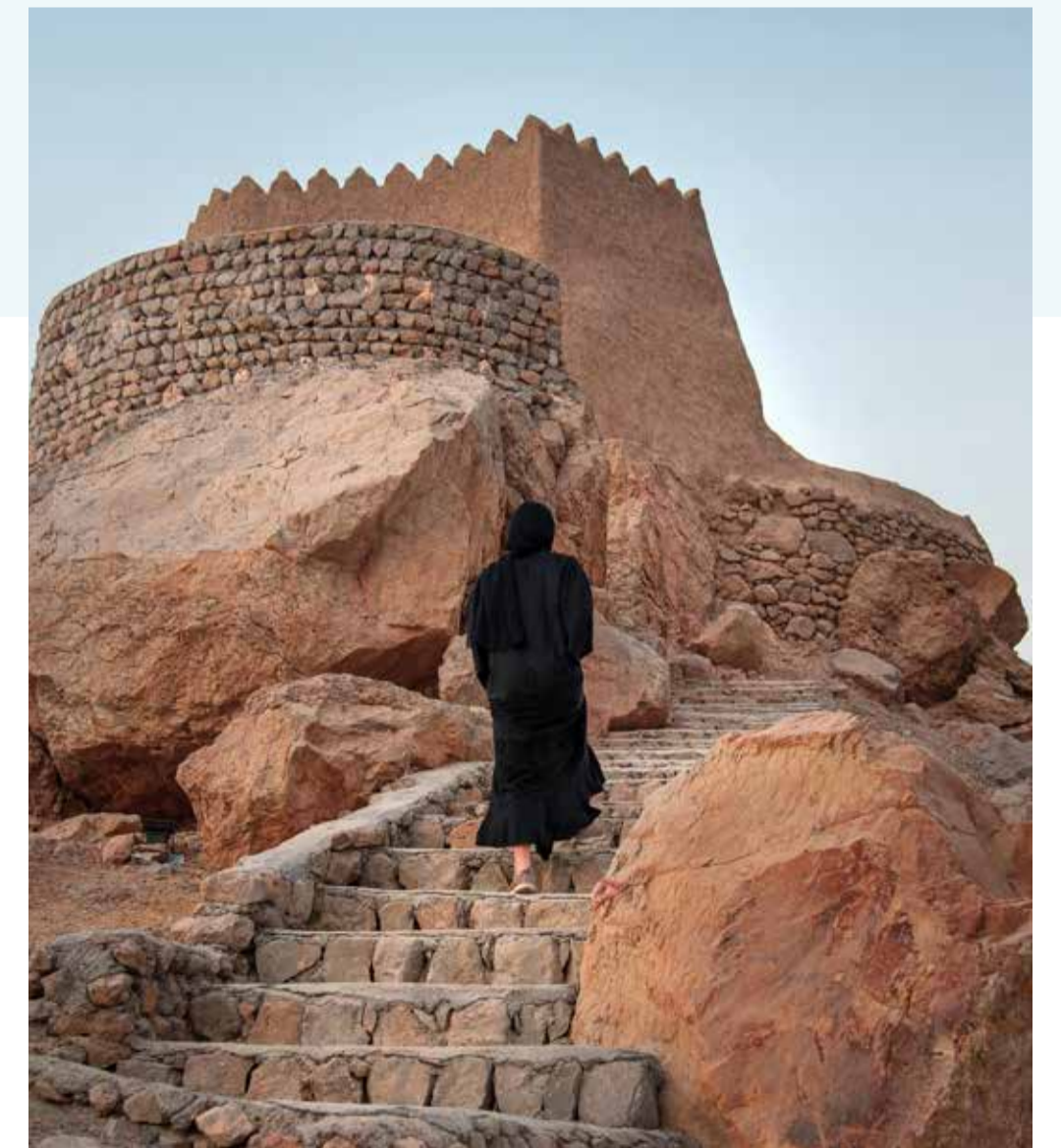
Ras Al Khaimah (RAK) is the northernmost of the seven Emirates that make up the United Arab Emirates. It is known for its rich history, dating back 7,000 years, and diverse landscape, from 64km of pristine beaches, to terracotta deserts and an imposing mountain backdrop.

Enchanting Beauty

The Emirate is home to the highest peak in the UAE, Jebel Jais, which features the world's longest zip line, at almost 3km.



Ras Al Khaimah is also centrally located at the modern crossroad between Europe, Asia and Africa, with one third of the world's population within four hours' flying time, making it an ideal location for businesses to expand into the UAE, the Middle East and Africa and beyond. Indeed, the World Bank's Doing Business report ranks Ras Al Khaimah 30th out of 190 economies for ease of doing business.



INTRODUCING
Mina Al Arab

A luxurious, fully integrated community that offers the finest in waterfront living, Mina Al Arab is a blissful getaway, located in the beautiful natural surroundings of Ras Al Khaimah's pristine coastline. Mina Al Arab was created with the environment in mind, with numerous areas of lush parkland and coastal wetlands devoted to preserving and showcasing its natural beauty. Surrounding residents with the beauty and diversity, the community aims to encourage a lifestyle where relaxation and healthy living come naturally and is the perfect place to call home, for families and young professionals alike.

- 1. THE BEACH FRONT
- 2. THE LAGOON WALK
- 3. THE HARBOUR
- 4. GRANADA
- 5. MALIBU
- 6. BERMUDA
- 7. MARBELLA
- 8. FLAMINGO VILLAS
- 9. ECO LODGE
- 10. GATEWAY RESIDENCES
- 11. ANANTARA RESORT & SPA
- 12. INTERCONTINENTAL HOTEL:
RESORT & SPA
- 13. GATEWAY II RESIDENCES





Hayat island

- 1. MARBELLA RESIDENCE CLUB & POOL
- 2. MARBELLA VILLAS
- 3. NEIGHBOURHOOD PARK
- 4. INTERCONTINENTAL HOTEL RESORT & SPA
- 5. BAY RESIDENCES
- 6. GATEWAY II RESIDENCES
- 7. LIFESTYLE HOTEL



44M^{FT²}
MINA AL ARAB TOTAL SIZE

6M^{FT²}
HAYAT ISLAND
TOTAL SIZE



7,000
Trees in Mina Al Arab that support migratory bird patterns and create a wonderful green environment for residents.



RETAIL &
F&B

INTERCONTINENTAL HOTEL AND RESORT



351 KEYS
LUXURY HOTEL

ANANTARA MINA AL ARAB HOTEL AND RESORT



3,544^M

COASTLINE

174 KEYS



More than
2Million^{SQ}
Protected Mangrove area owned by RAK Properties

AN INCREDIBLE
Design Vision

THE BEAUTY OF NATURE, DYNAMICS OF
COMMUNITY AND ELEGANCE OF LUXURY
BLEND SEAMLESSLY INTO EACH OTHER

Hayat Island's unique topography has influenced its innovative design as a visually impressive development, with a prestigious residential area, a well-connected waterfront, sumptuous branded hotels, high-end retail, pampering and energizing leisure facilities, an eclectic selection of restaurants and bars, a vibrant entertainment scene and the freedom of vast, lush open spaces.



THE BEAUTY OF
island life



Nature trails, mangroves, and the flamingo reserve provides a unique opportunity to live in a vibrant environment and experience the beauty of the surroundings on a daily basis.





“
We want to ensure a strong connection with nature, deep relaxation, true enjoyment and unique moments.

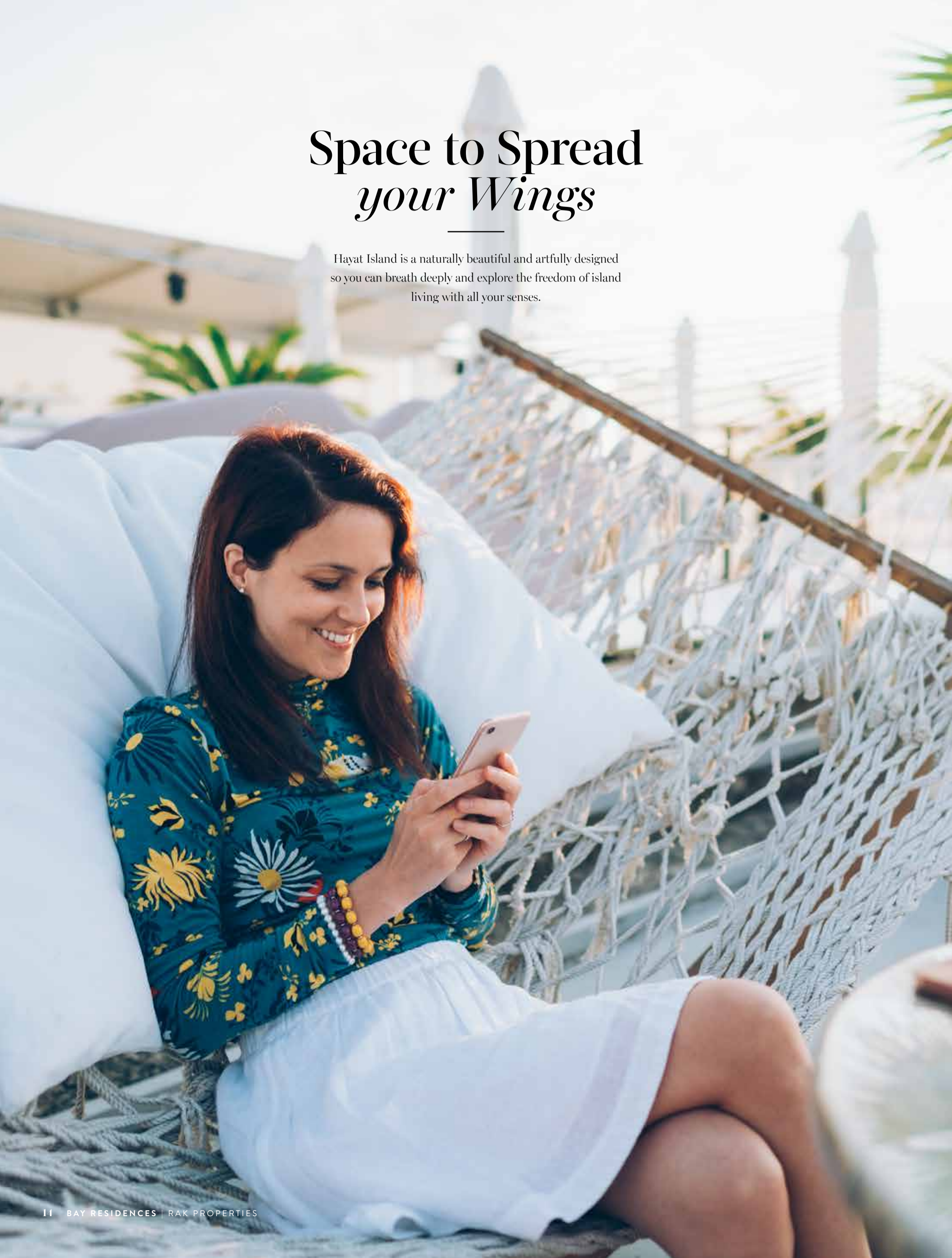
RAK PROPERTIES



Hayat Island is the perfect place to call home, to grow, to nurture, to experience, to share, to play, to live and create memorable moments that last a lifetime.

Space to Spread *your Wings*

Hayat Island is a naturally beautiful and artfully designed so you can breath deeply and explore the freedom of island living with all your senses.



THE EXUBERANCE OF WATER

The island features exciting water edges, a fantastic waterfront promenade, seafront dining and retail, scenic cycle and pedestrian paths, all revolving around its amazing position and spectacular ocean that surrounds it.

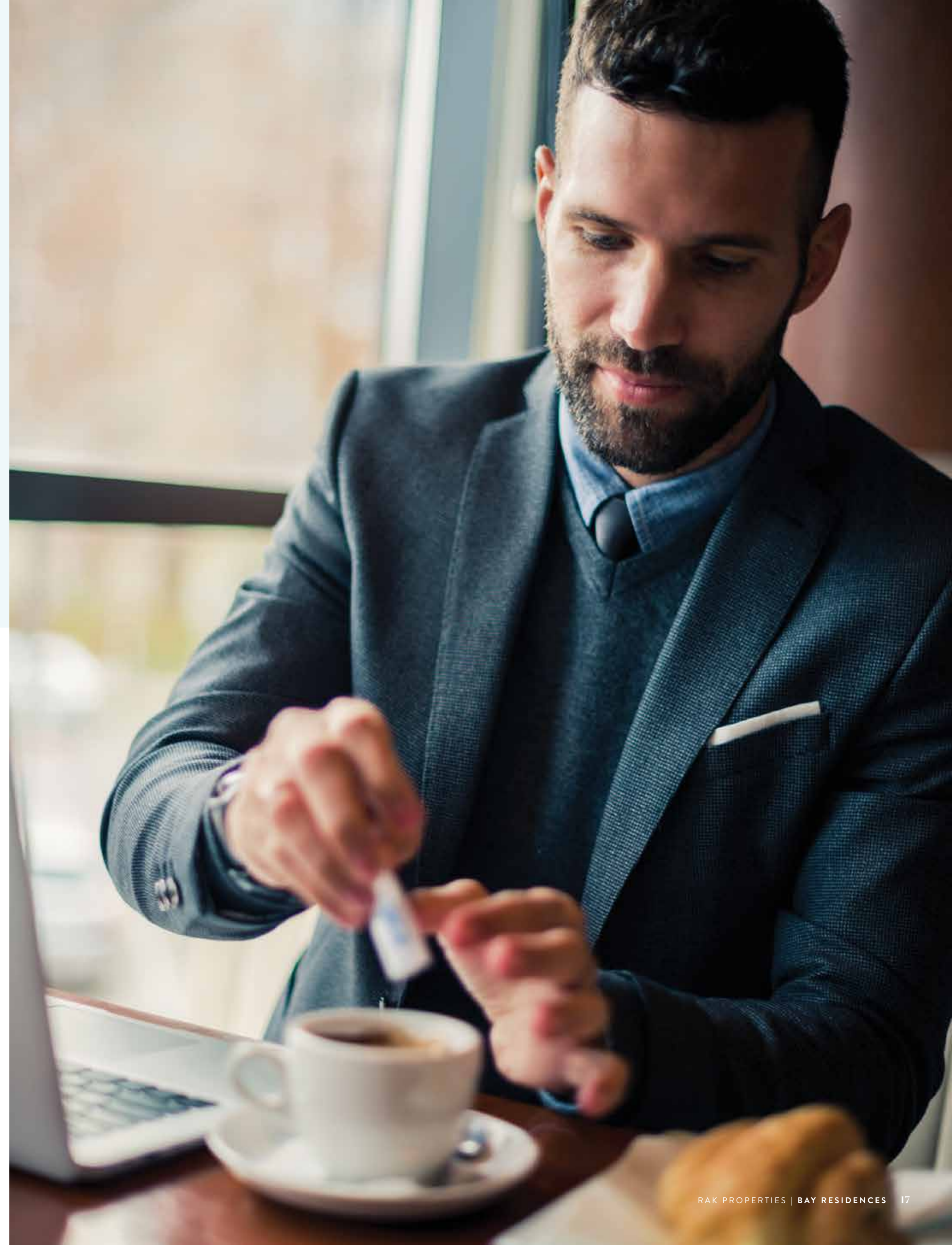




Savor *the Moment*

A TASTE OF ISLAND BLISS

The island offers everything from enchanting candle-lit dinners on the beach, vibrant culinary explorations with world-famous chefs, innovative international cuisine, to family-friendly dining, traditional flavors and experiences, as well as health food and specialized establishments.



FOOD-LOVERS HAVEN

The diversity of Hayat Island extends into its eclectic array of restaurants and bars, with the perfect place and setting for each mood, taste, palate and occasion.



Never a dull *Moment*

THE LIFE OF THE ISLAND

Hayat Island is the perfect setting for amazing entertainment, for all ages, inspirations, inclinations and preferences. It provides wholesome fun the entire family can enjoy together, as well as a vibrant scene where music from all over the world mixes with the sound of the ocean, famous DJs rock the house with their beats, and the party lasts until the sun's rays hit the beach.



The stunning events plaza is an always happening and trending place, with diverse events to spark everyone's interest and inspirational interactive public art.

The perfect positioning and location mean you can admire the view, enjoy the show, feel the breeze in your hair, see the sparkle of the sea, and fill your lungs with the sweet perfume of the waves.



DISCOVER *New Worlds*

EVERYTHING YOU NEED AND WANT, FROM MODERN LUXURY TO INCANDESCENT TRADITION

Discover the extensive retail universe on Hayat Island, with luxury boutiques, exclusive showrooms, traditional souq stalls, bustling mall stores, and shops that account for all tastes, needs and desires.



InterContinental *Hotel*

IDEAL PLACE, IDEAL LOCATION, IDEAL EXPERIENCE
THAT'S THE INTERCONTINENTAL GUARANTEE

The prestigious InterContinental Mina Al Arab Resort is located on Hayat Island, with 350 guest rooms and suites, as well as dazzling facilities that include a health club, spa, two swimming pools, fitness centre, and a selection of restaurants. With the diverse and spectacular Ras Al Khaimah fast on the rise as the UAE's desired destination for getaways, nature, and relaxation, the InterContinental Mina Al Arab Resort is a top choice for guests and residents that are used only to the best, and expect it at every turn.



Anantara *Hotel*

Anantara Mina Al Arab Ras Al Khaimah Resort will feature the emirate's first Maldivian inspired overwater villas complex. With a 9,000 sqm private beach which overlooks the stunning eco-reserve lined with mangroves, the resort will also be home to a number of first class health and sports amenities such as the world-famous Anantara Spa, swimming pools and a tennis court. In addition, the resort will have four restaurant offerings, including a Thai specialty restaurant and a seafood restaurant, all of which creates the perfect ambience to both relax and be entertained.



An aerial photograph of the Bay Residences development at dusk. The image shows four tall, modern residential towers with curved facades and glass balconies, illuminated from within. The towers are surrounded by a landscaped area with palm trees, walkways, and several swimming pools. In the foreground, there is a large, open beach area with lounge chairs and umbrellas. The background features a cityscape and distant mountains under a twilight sky.

R

BAY RESIDENCES

Ocean Views *Forever*

The Bay Residences is on the prestigious Hayat Island of the Mina Al Arab, with the best-in-class amenities the region has to offer, superb beach views, and the breathtaking expanse of the Arabian Gulf.

BAY RESIDENCES
Idyllic Location



THE BAY RESIDENCES IS DESIGNED TO EXEMPLIFY
AND ACCENTUATE THE IDYLIC NATURAL
ENVIRONMENT OF RAS AL KHAIMAH

Swim in the turquoise waters of the Arabian Gulf while gazing upon the majestic views in the background. Soak in the sun on enchanting beaches, and feel the pearly white sand on your toes. In this natural paradise, with dolphins and flamingos, secluded coves, pearly white sand beaches, nature trails, the Bay Residences offers a unique combination of the best of luxury living situated within pure nature, with the ultimate in both recreation and relaxation.

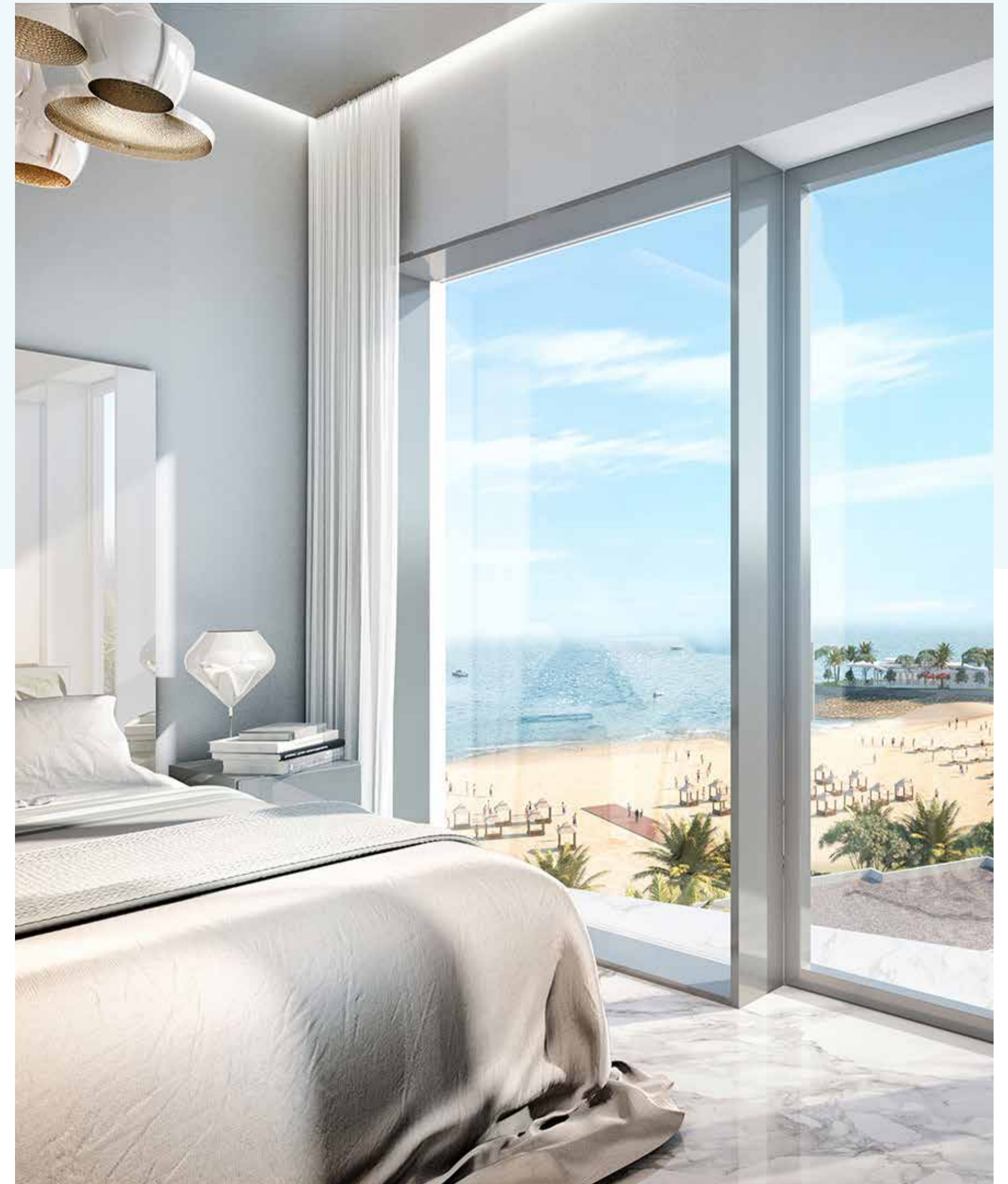


AMENITIES

Infinite Wonder

AMENITIES OF THE BAY RESIDENCES PROVIDE ALL THE ESSENTIALS OF A LUXURY EXPERIENCE

We've got you covered with a world-class gym, a shaded kids' pool and dazzling sunbathing deck. Yet we've also thought about those super luxurious moments, such as viewing the ocean from the tranquility of an infinity pool.



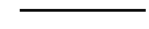
The Bay Residences also provides unique, organic spaces, such as an aromatic garden, with colorful and aromatic trees, an open lawn, and a residential garden to connect and share.



“The best of luxury living with the ultimate in both recreation and relaxation.”

RAK PROPERTIES

The Bay Residences has everything you need for a perfect life - dazzling alabaster beaches, infinite ocean views, amenities to nourish and strengthen body and soul, and features that pamper and indulge to the maximum.



DESIGNED TO

Get Active

GAIN POWERFUL MOMENTUM, STRENGTHEN AND REVIVE YOURSELF IN NATURE

With a multitude of pedestrian walkways, promenades and boardwalks, Bay Residence is the perfect place to admire nature, discover the pleasure of walking, as well as the leisure and excitement of strolling through Souq stalls, restaurants and bars.



CYCLING PATHS, WALKWAYS RUNNING TRACKS

Two pedestrian running tracks, one public and one semi-private, loop around the island, to promote an active and healthy lifestyle.

B

BAY RESIDENCES

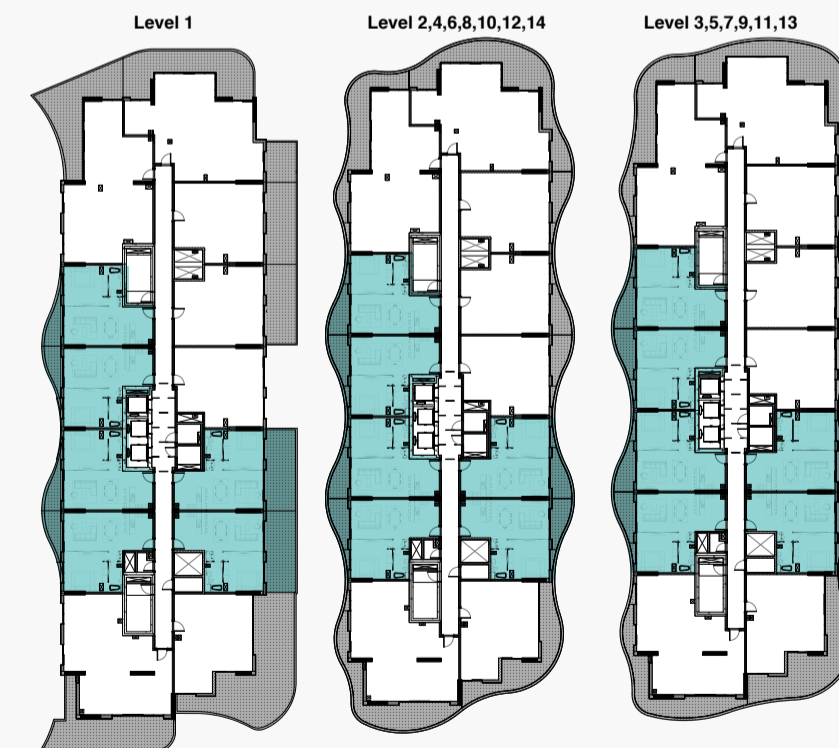
FLOOR PLANS

1

BEDROOM APARTMENT

TYPE 1

	Sq.f	Sq.mt
Unit Area	721.188	67
Balcony Area	96.876	9
Total Area	818.064	76



Units | 101,102,107,108,111,112,201,202,208,209,212,213,301,302,308,309,312,313,401,402,408,409,412,413,501,502,508,509,512,513,601,602,608,609,612,613,701,702,708,709,712,713,801,802,808,809,812,813,901,902,908,909,912,913,1001,1002,1008,1009,1012,1013,1101,1102,1108,1109,1112,1113,1201,1202,1208,1209,1212,1213,1301,1306,1307,1310,1311,1401,1406,1407,1410,1411

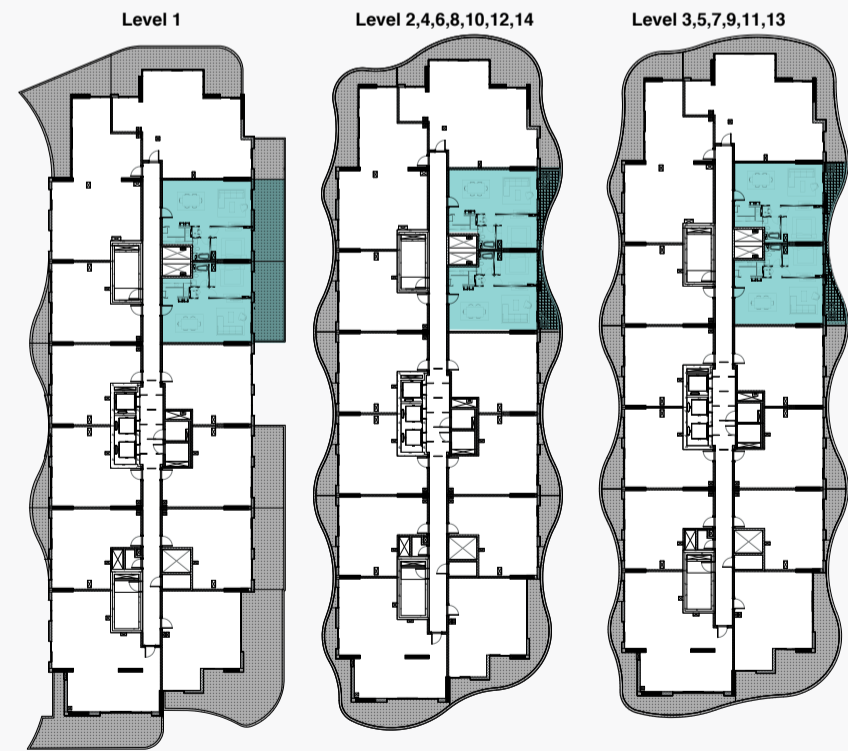
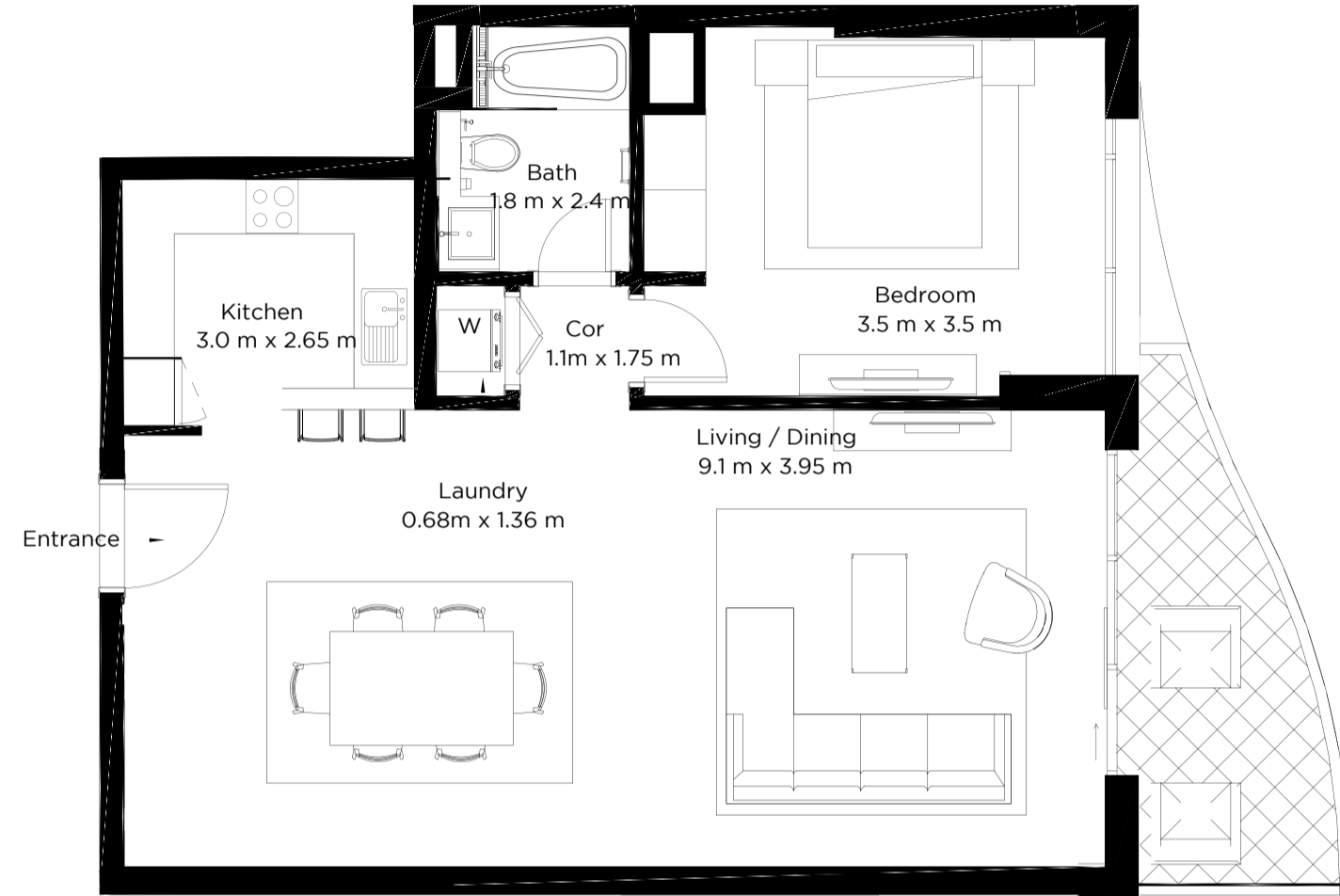
Floor plan numbers, square footage, and floor plans are approximate. Final dimensions, square footage and floor plans may vary or may be mirrored. Balcony areas for each type differ.

1

BEDROOM APARTMENT

TYPE 1.2

	Sq.f	Sq.mt
Unit Area	796.536	74
Balcony Area	96.876	9
Total Area	893.412	83



Units | 105,106,205,206,305,306,405,406,505,506,605,606,705,706,805,806,905,906,1005,1006,1105,1106,1205,1206,1304,1404

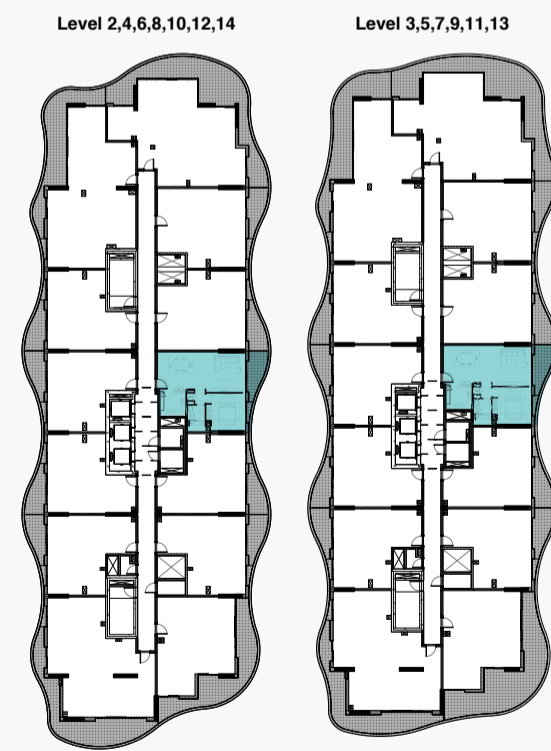
Floor plan numbers, square footage, and floor plans are approximate. Final dimensions, square footage and floor plans may vary or may be mirrored. Balcony areas for each type differ.

1

BEDROOM APARTMENT

TYPE 1.3

	Sq.f	Sq.mt
Unit Area	785.772	73
Balcony Area	96.876	9
Total Area	882.648	82



Units | 207,307,407,507,607,707,807,907,1007,1107,1207,1305,1405

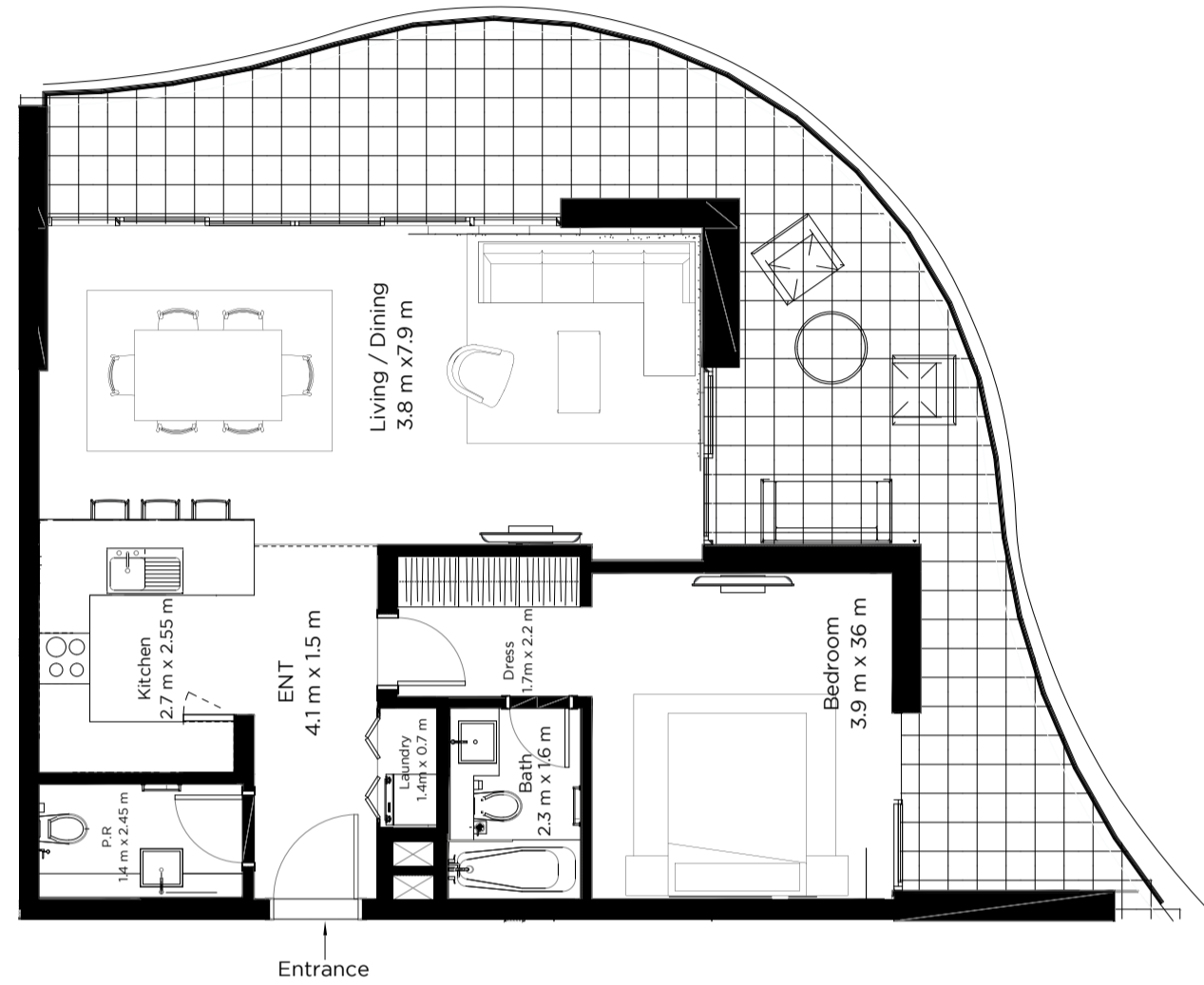
Floor plan numbers, square footage, and floor plans are approximate. Final dimensions, square footage and floor plans may vary or may be mirrored. Balcony areas for each type differ.

1

BEDROOM APARTMENT

TYPE 6

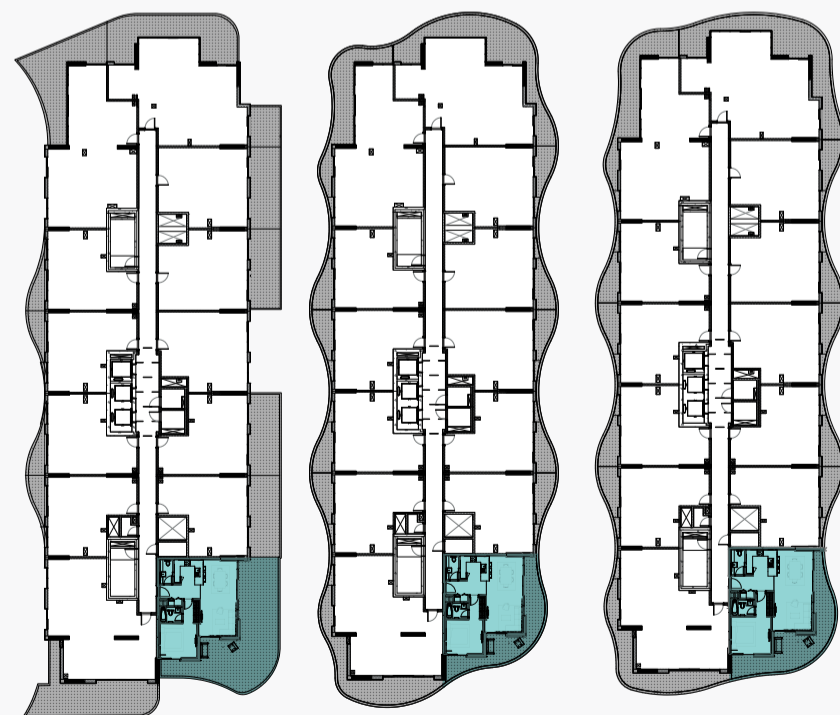
	Sq.f	Sq.mt
Unit Area	828.828	77
Balcony Area	355.212	33
Total Area	1184.04	110



Level 1

Level 2,4,6,8,10,12,14

Level 3,5,7,9,11,13



Units | 109,210,310,410,510,610,710,810,910,1010,1110,1210,1308,1408

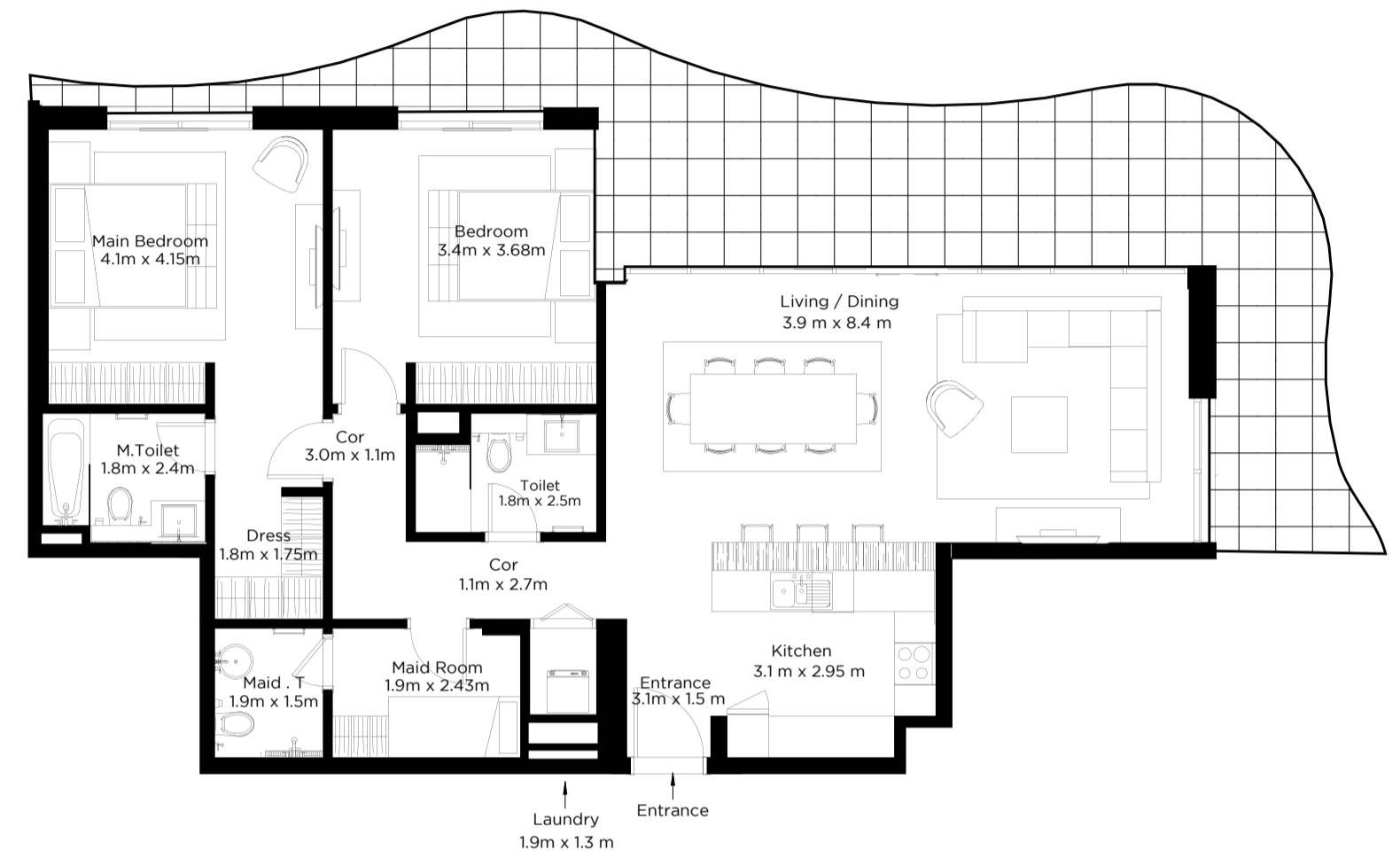
Floor plan numbers, square footage, and floor plans are approximate. Final dimensions, square footage and floor plans may vary or may be mirrored. Balcony areas for each type differ.

2

BEDROOM APARTMENT

TYPE 1

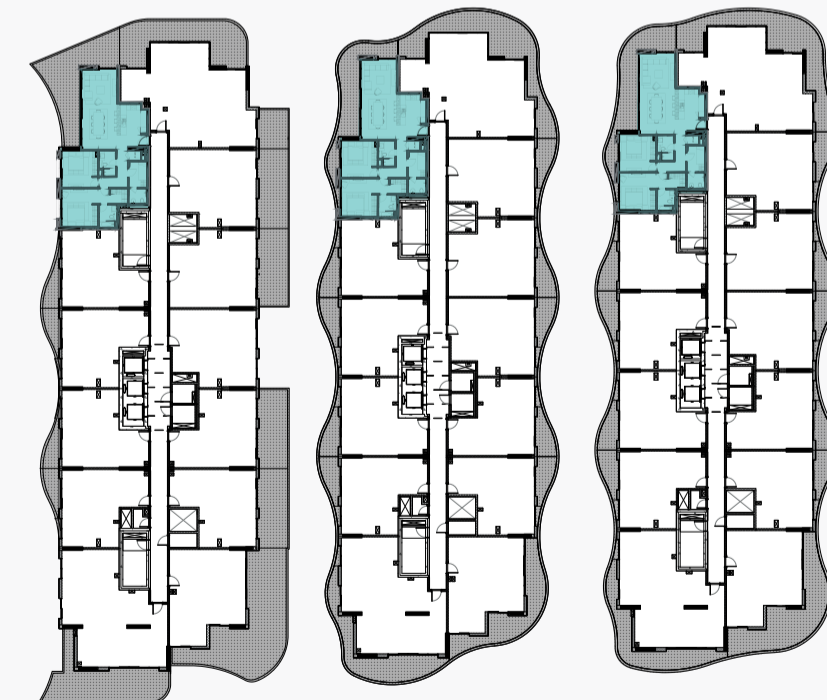
	Sq.f	Sq.mt
Unit Area	1313.208	122
Balcony Area	355.212	33
Total Area	1668.42	155



Level 1

Level 2,4,6,8,10,12

Level 3,5,7,9,11



Units | 103, 203, 303, 403, 503, 603, 703, 803, 903, 1003, 1103, 1203

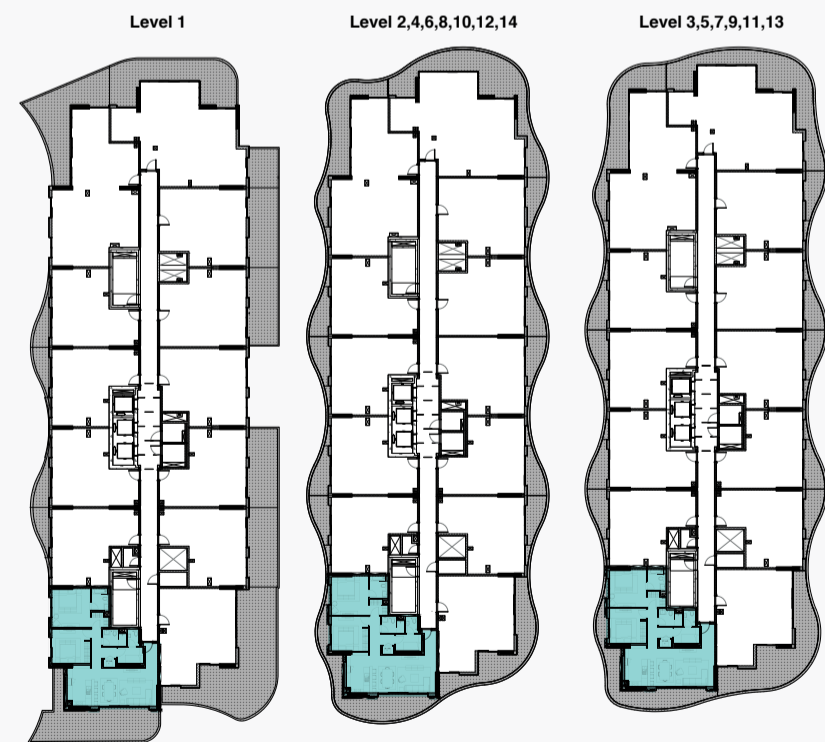
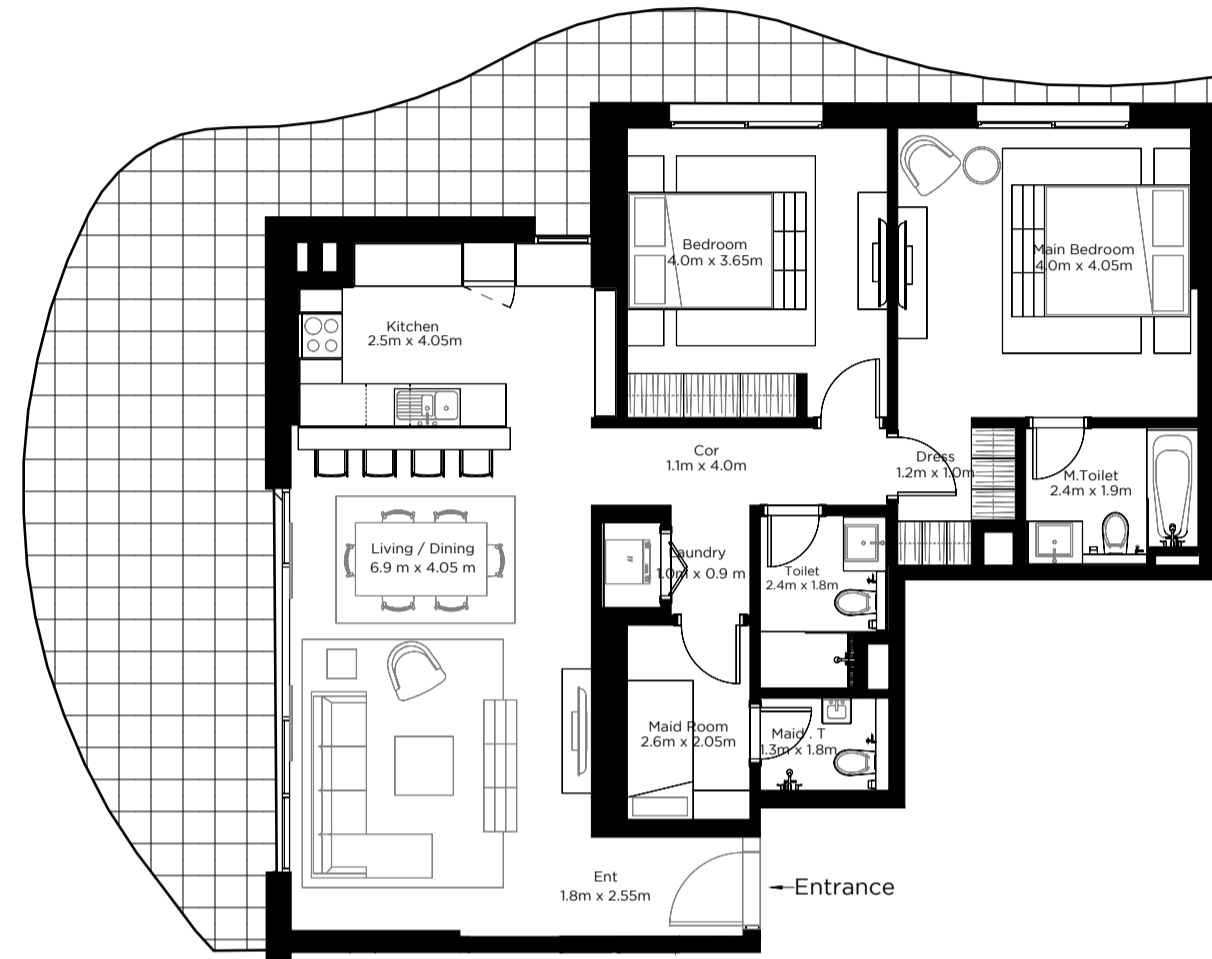
Floor plan numbers, square footage, and floor plans are approximate. Final dimensions, square footage and floor plans may vary or may be mirrored. Balcony areas for each type differ.

2

BEDROOM APARTMENT

TYPE 2

	Sq.f	Sq.mt
Unit Area	1227.096	114
Balcony Area	387.504	36
Total Area	1614.6	150



Units | 110, 211, 311, 411, 511, 611, 711, 811, 911, 1011, 1111, 1211, 1309, 1409

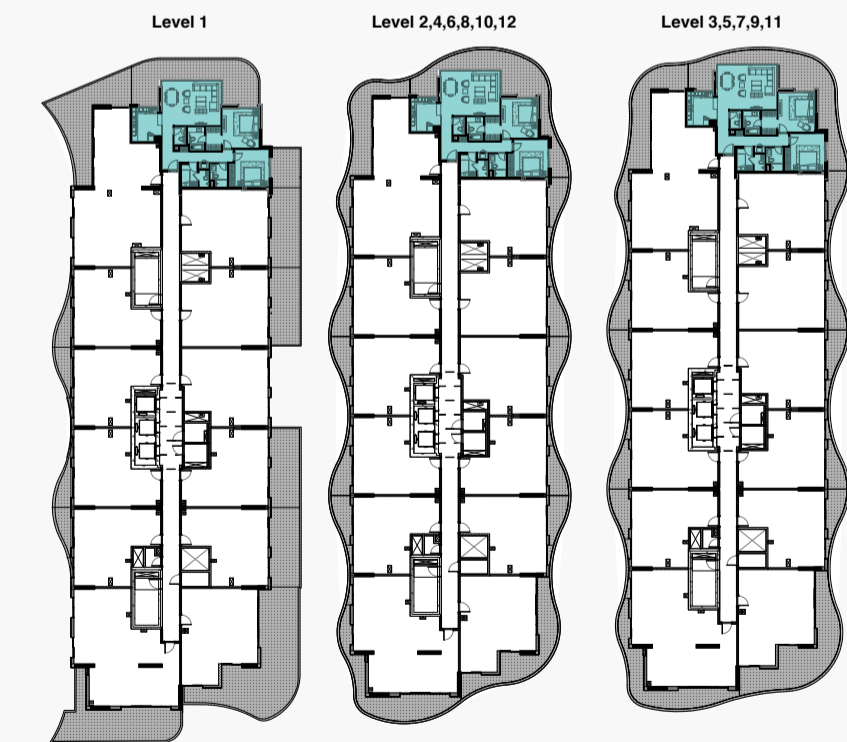
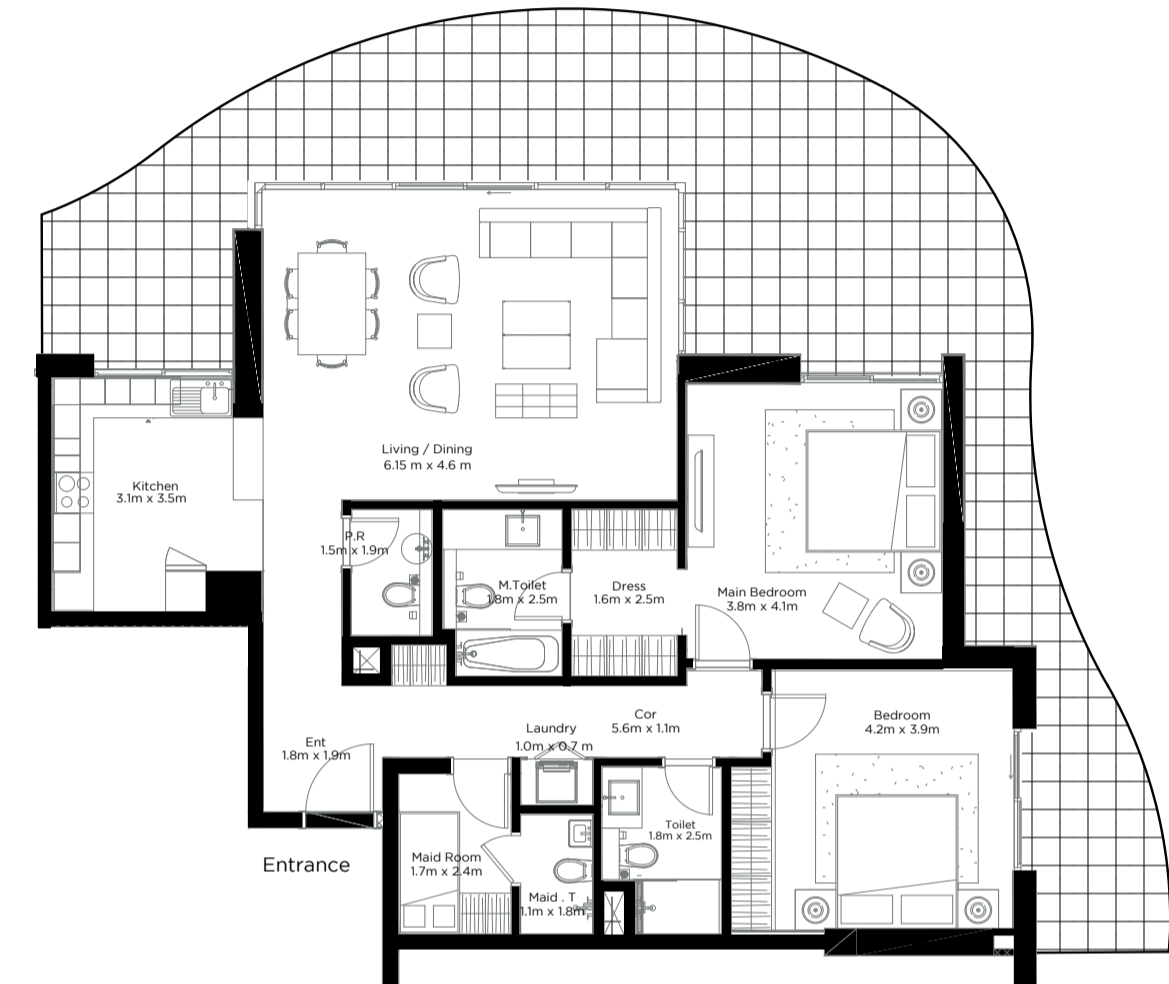
Floor plan numbers, square footage, and floor plans are approximate. Final dimensions, square footage and floor plans may vary or may be mirrored. Balcony areas for each type differ.

2

BEDROOM APARTMENT

TYPE 5

	Sq.f	Sq.mt
Unit Area	1270.152	118
Balcony Area	592.02	55
Total Area	1862.172	173



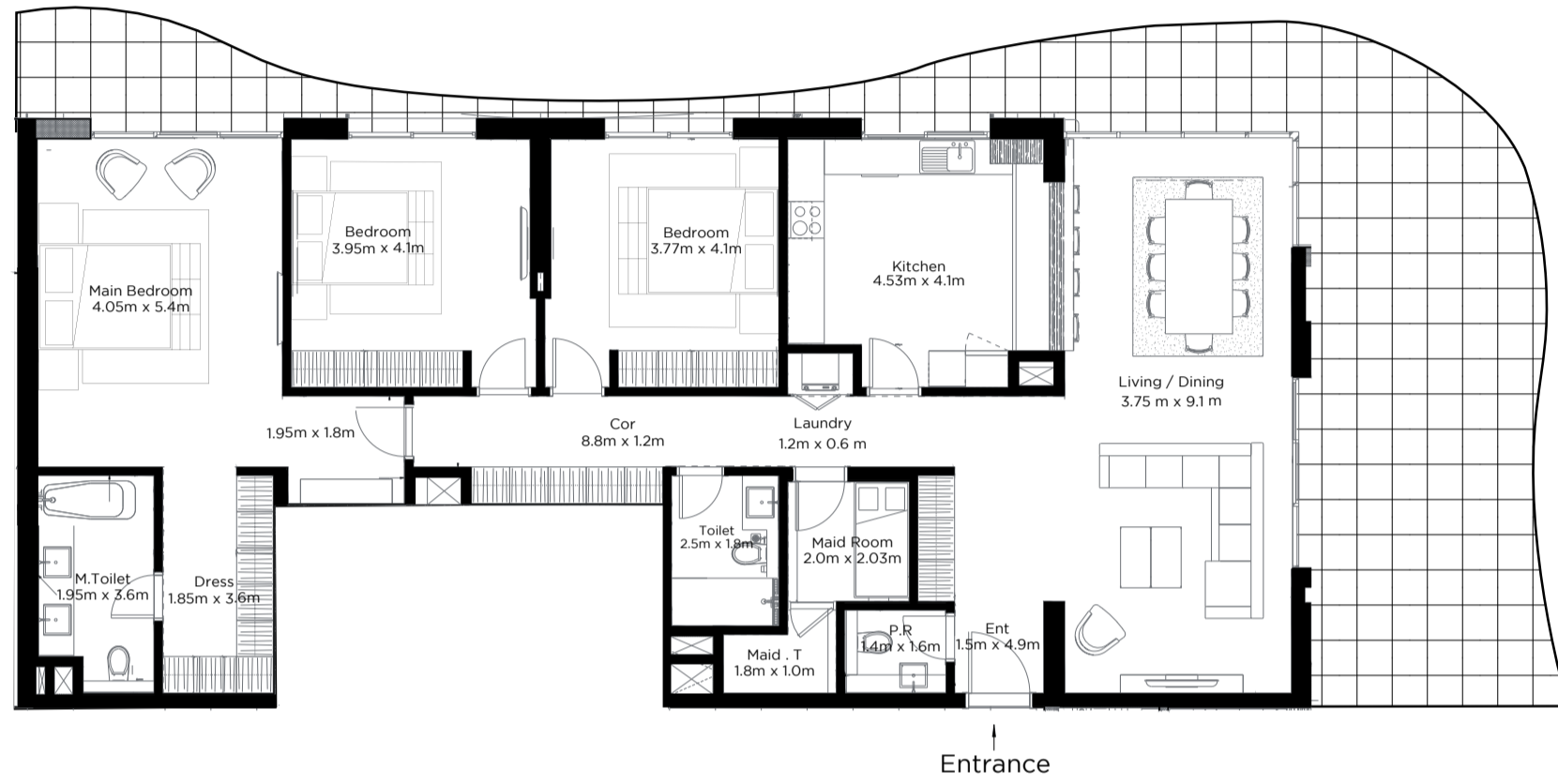
Units | 104, 204, 304, 404, 504, 604, 704, 804, 904, 1004, 1104, 1204

Floor plan numbers, square footage, and floor plans are approximate. Final dimensions, square footage and floor plans may vary or may be mirrored. Balcony areas for each type differ.

3

BEDROOM APARTMENT

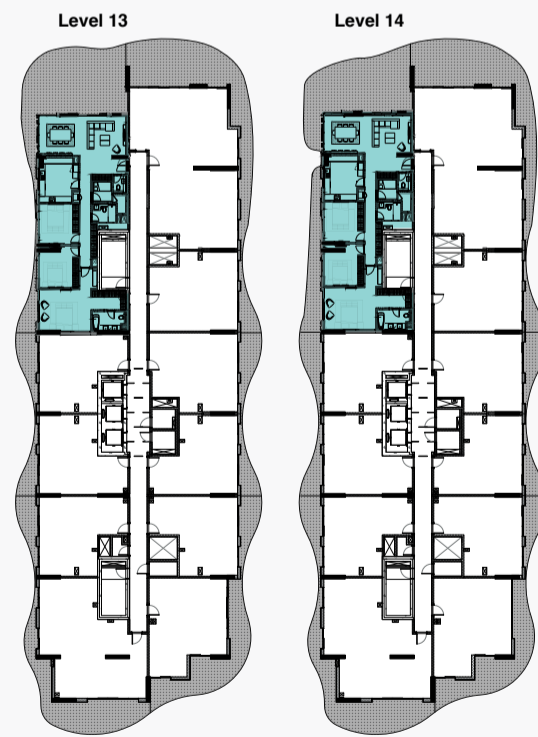
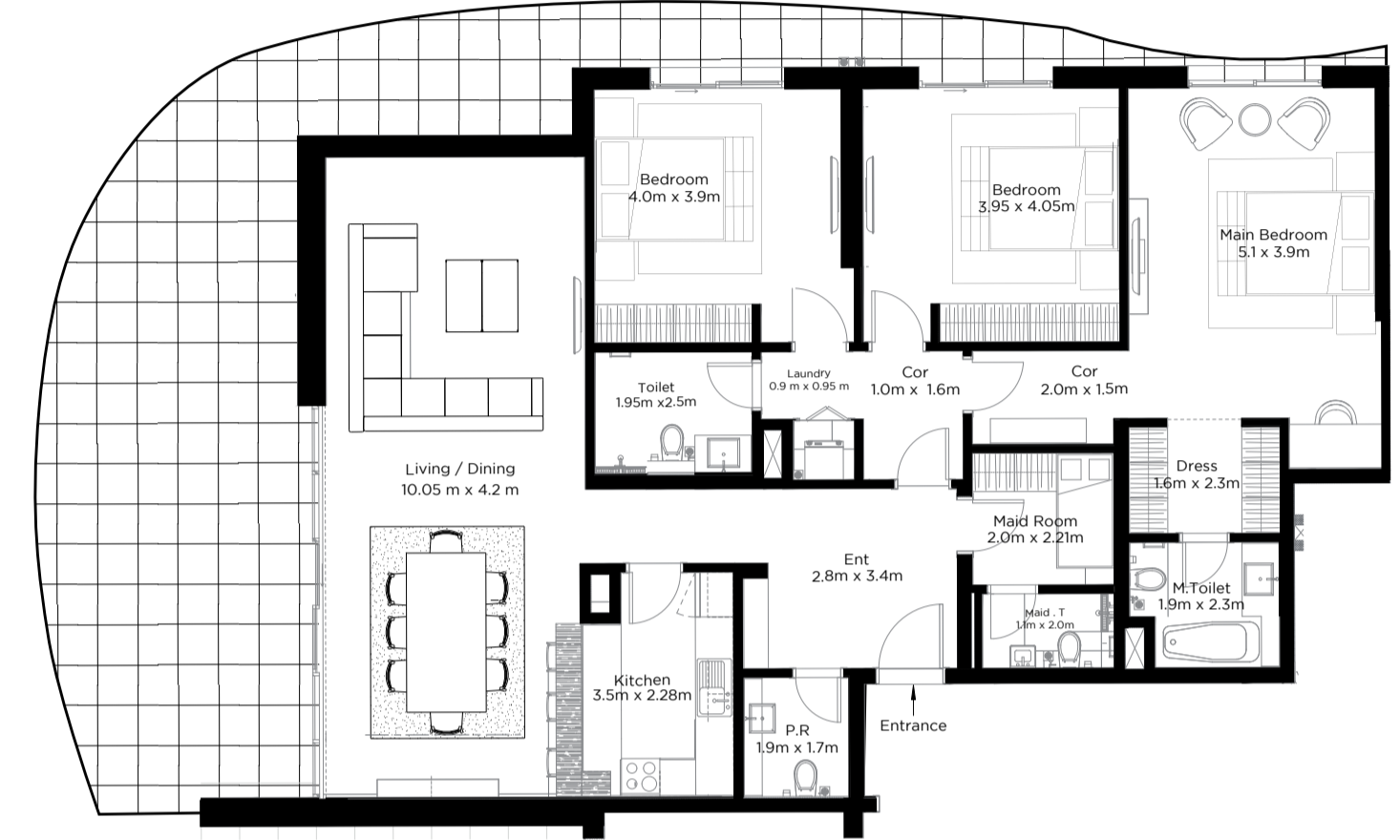
	Tower 2	
	Sq.f	Sq.mt
Unit Area	1926.756	179
Balcony Area	925.704	86
Total Area	2852.46	265



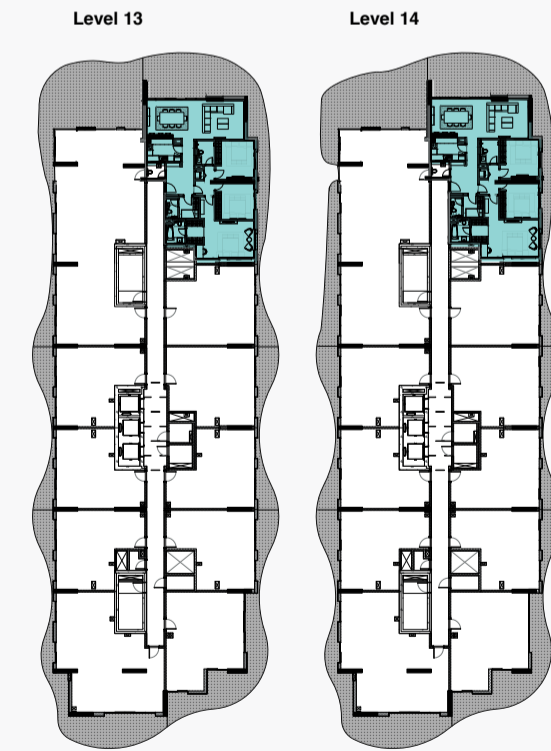
3

BEDROOM APARTMENT

	Tower 2	
	Sq.f	Sq.mt
Unit Area	1819.116	169
Balcony Area	721.188	67
Total Area	2540.304	236



Units | 1302, 1402



Units | 1303, 1403

Floor plan numbers, square footage, and floor plans are approximate. Final dimensions, square footage and floor plans may vary or may be mirrored. Balcony areas for each type differ.

Floor plan numbers, square footage, and floor plans are approximate. Final dimensions, square footage and floor plans may vary or may be mirrored. Balcony areas for each type differ.

Key Plans

