

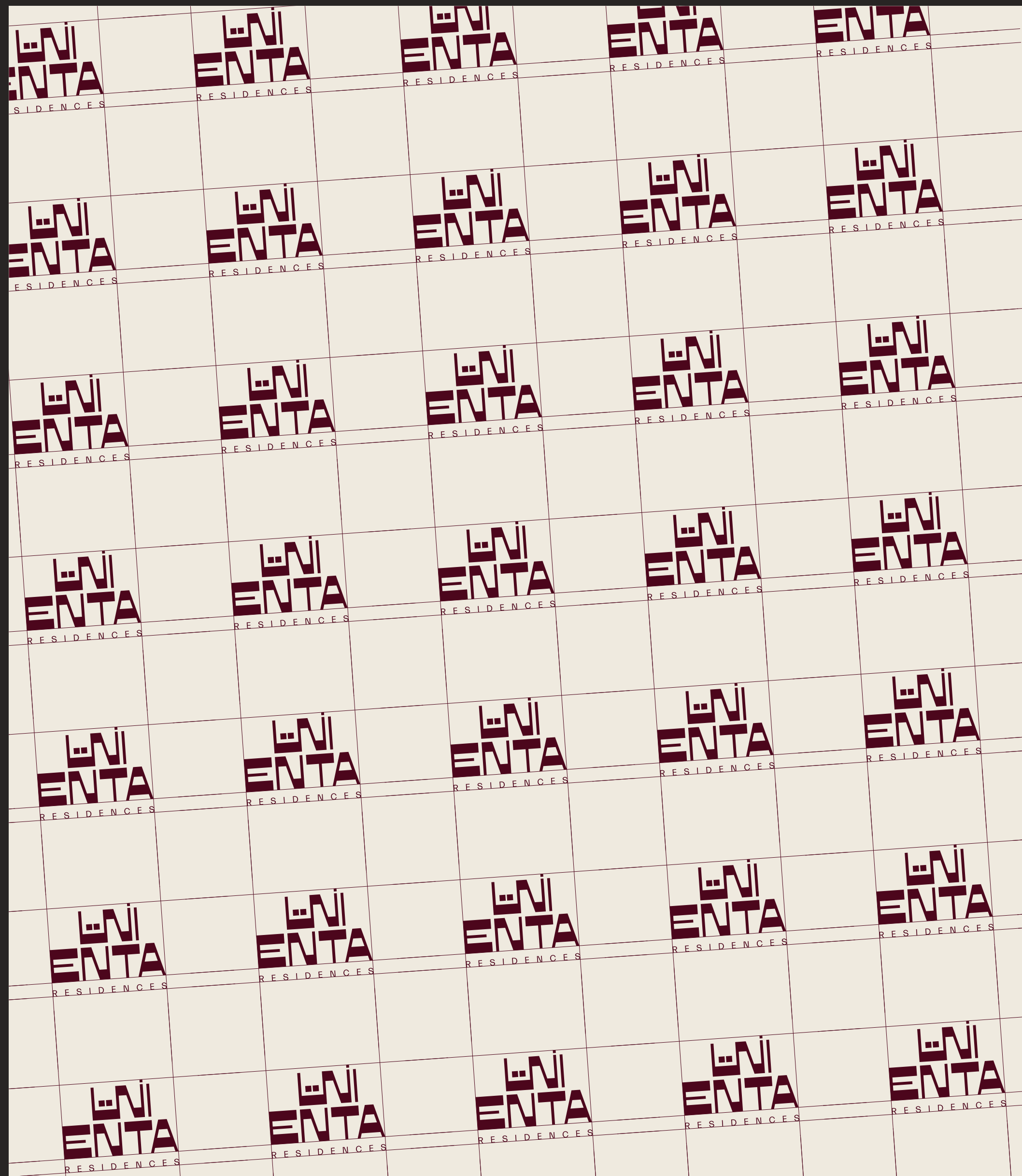
ENTA

M I N A



EDITION

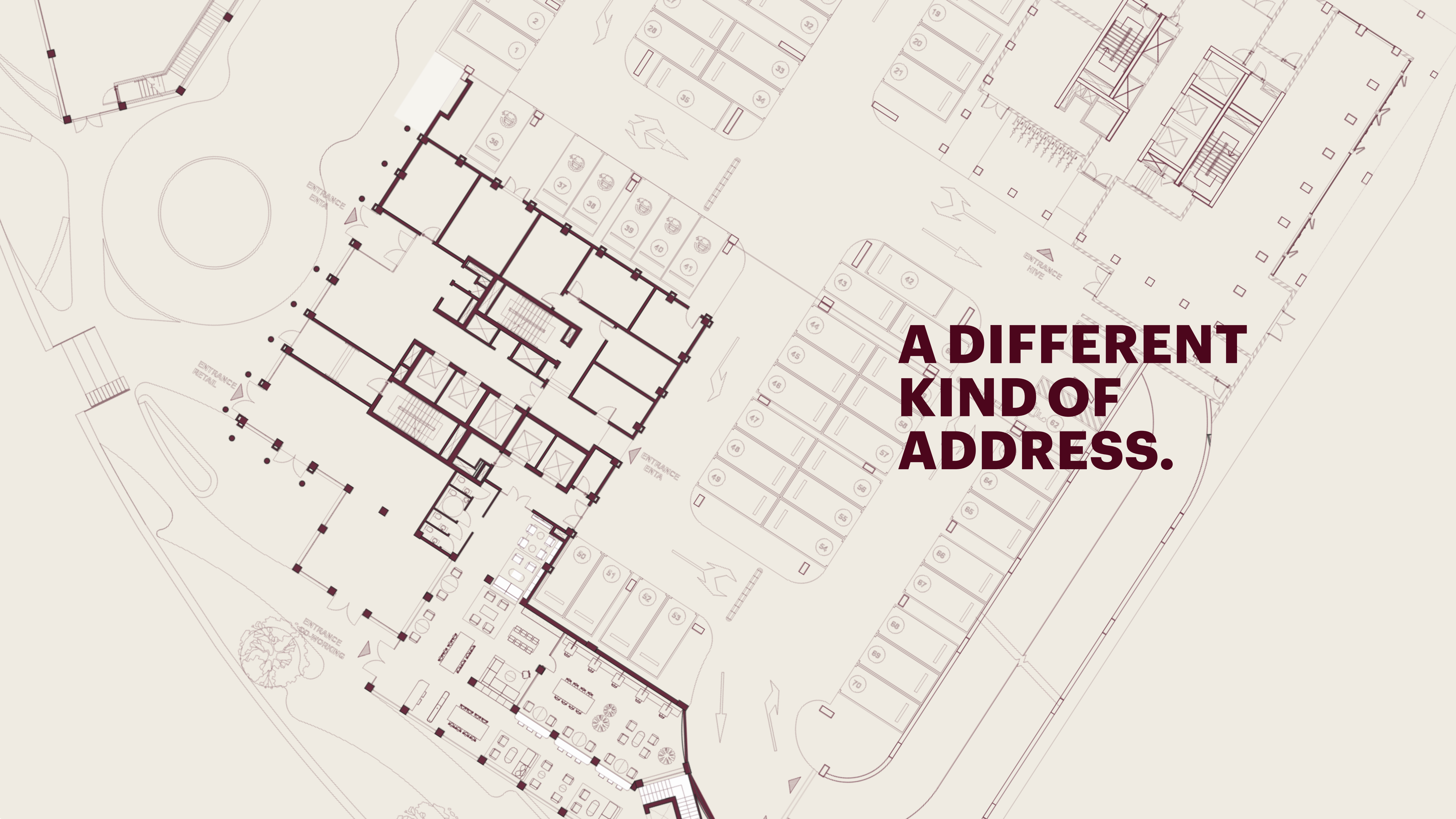
(001)



المنيا ENTA M I N A

WELCOME

(HOME)



**A DIFFERENT
KIND OF
ADDRESS.**

ROOMS TO BREATHE

(& ROOMS TO BE)



(001)



(002)

RAW TEXTURES & NATURAL LIFE

ENTA is designed around tactility, calm, and everyday ease. Natural materials, warmer tones, and generous proportions create homes that feel considered from the moment you step inside.



ENTA DOESN'T EXIST IN ISOLATION, IT SITS WITHIN A BROADER WAY OF LIVING.

A flexible workspace, curated F&B concepts, and a concept store shape the everyday at ground level.

Next door, HIVE — our built-to-rent counterpart — extends the experience with shared access to the pool, outdoor lounge, waterfront promenade, and BBQ area.



(OUTDOOR LOUNGE)



(WATERFRONT PROMENADE)

AT THE CENTRE OF MINA.

ENTA RESIDENCES
LOCATED AT HAYAT ISLAND,
MINA, RAS AL KHAIMAH.

Mina balances protected nature with considered waterfront living — framed by mangroves, coastline, hospitality, and easy access to the water.

New landmarks continue to shape a destination that feels calm, current, and connected.

Mina presents a rare combination of lifestyle appeal and investment potential.



PLACED WHERE IT MATTERS.

KEY DESTINATIONS NEARBY

Anantara Residences Mina Ras Al Khaimah
Nikki Beach Resort & Beach Club
InterContinental Resort & Spa
Bar Du Port Beach
Four Seasons Resort & Residences
Mina Downtown



CONNECTED BY DESIGN.

Placed within Mina, with direct access to Hayat Island and the wider Ras Al Khaimah coastline.

Only 16 minutes from the upcoming Wynn Resort on Al Marjan Island and neighbouring Marjan Beach, ENTA is ideally positioned close to one of the region's most dynamic destinations for hospitality, entertainment, culture, and lifestyle.



HOW YOU LIVE HERE.

- 01** Flex Workspace
- 02** Restaurant
- 03** Café
- 04** Concept Store
- 05** Residents' Lounge
- 06** Library
- 07** Hosting Room with Chef's Kitchen
- 08** Fitness Centre
- 09** IR Saunas, Cold Plunge Pools & Treatment Rooms
- 10** Infrared Saunas, Cold Plunge Pools & Treatment Rooms Swimming Pool & Outdoor Lounge
- 11** Rooftop
- 12** Waterfront Promenade & BBQ Areas





MANAGED WITH FLEXIBILITY. BACKED BY EXPERIENCE.

EXPERTLY MANAGED

Live in it. Lease it.
Or let us manage it.

CURATED LIVING

Furniture packages with character
and considered finishes.

TRUSTED DELIVERY

Backed by HIVE and RAK Properties,
with a strong track record in lifestyle
residential projects.





WHAT MAKES ENTA DIFFERENT.



(002)



(003)



(004)

**A BUILDING
WITH
CHARACTER.**

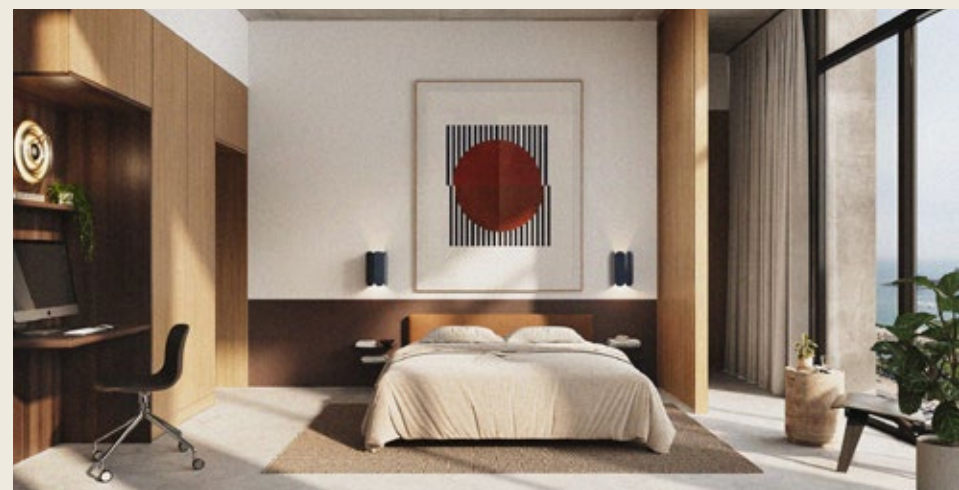
Designed with intention, proportion, and a quieter kind of confidence.

**A LIMITED
COLLECTION.**

Studios, 1BR and 2BR. Not many. On purpose.



(005)



(006)

**READY AT
HANDOVER.**

Fully considered interiors designed for immediate comfort.

**PRIVACY
WHEN YOU
NEED IT.**

Spaces to connect, without losing the feeling of home.

**WATERFRONT
CALM.**

Set on Hayat Island, within Mina. Designed for a quieter pace.

**URBAN
ENERGY.**

A short distance within Mina Downtown's rythm.

**BACKED BY
EXPERIENCE.**

A more considered product, supported by HIVE and RAK Properties.

**ON YOUR
TERMS.**

Live in it. Lease it. Or let us manage it.



(007)



(008)



(009)

(RESIDENTS' LOUNGE)





A CANVAS, DESIGNED TO REFLECT YOUR PERSONALITY AND STYLE



Minimal base. Strong point of view.



Curated materials and finishes.



Effortless sophistication.





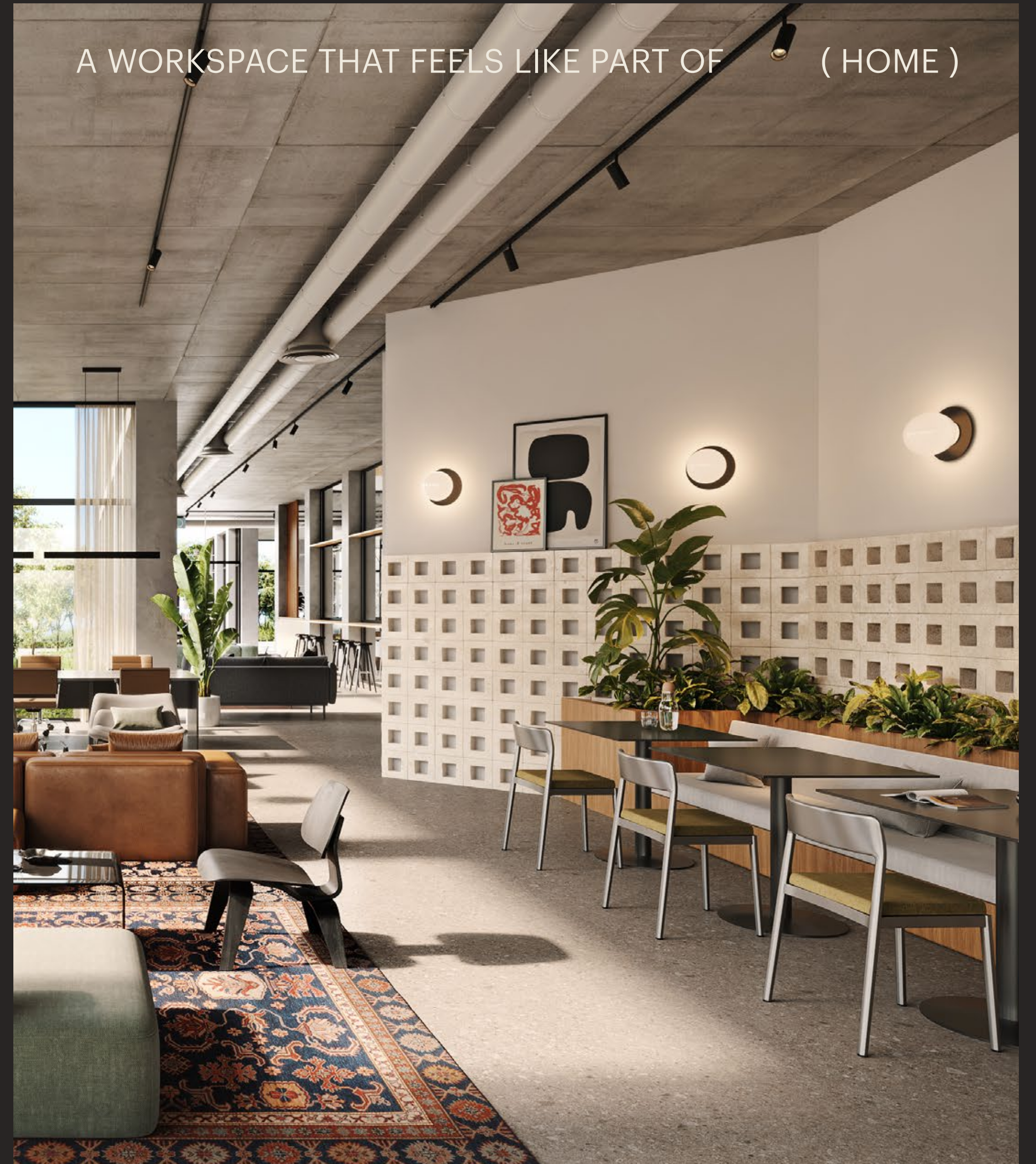
HOSTING

(ROOM)













ENTA
ENTA
ENTA
ENTA
ENTA
ENTA
ENTA
ENTA
ENTA

A WORKSPACE THAT FEELS LIKE PART OF (HOME)





GROUND FLOOR AMENITY PLAN

-  Restaurant
-  Main Lobby
-  Café
-  Concept Store
-  Flex Workspace
-  Flex Workspace Courtyard
-  Waterfront Promenade
-  Hangout Nooks
-  Public BBQ Area
-  Parking Entrance



(FLEX WORKSPACE)



(FLEX WORKSPACE)

(FLEX WORKSPACE)



FIRST FLOOR AMENITY PLAN

- 01** Fitness Centre
- 02** Infrared Saunas & Cold Plunge Pools
- 03** Residents' Lounge
- 04** Library
- 05** Hosting Room With Chef's Kitchen
- 06** Covered Outdoor Lounge
- 07** Yoga Deck
- 08** Hammocks
- 09** Outdoor Lounge
- 10** BBQ Deck
- 11** Lawn
- 12** Swimming Pool And Deck
- 13** Sunken Lounge
- 14** Outdoor Cinema
- 15** HIVE





(FITNESS CENTRE)



(LIBRARY)



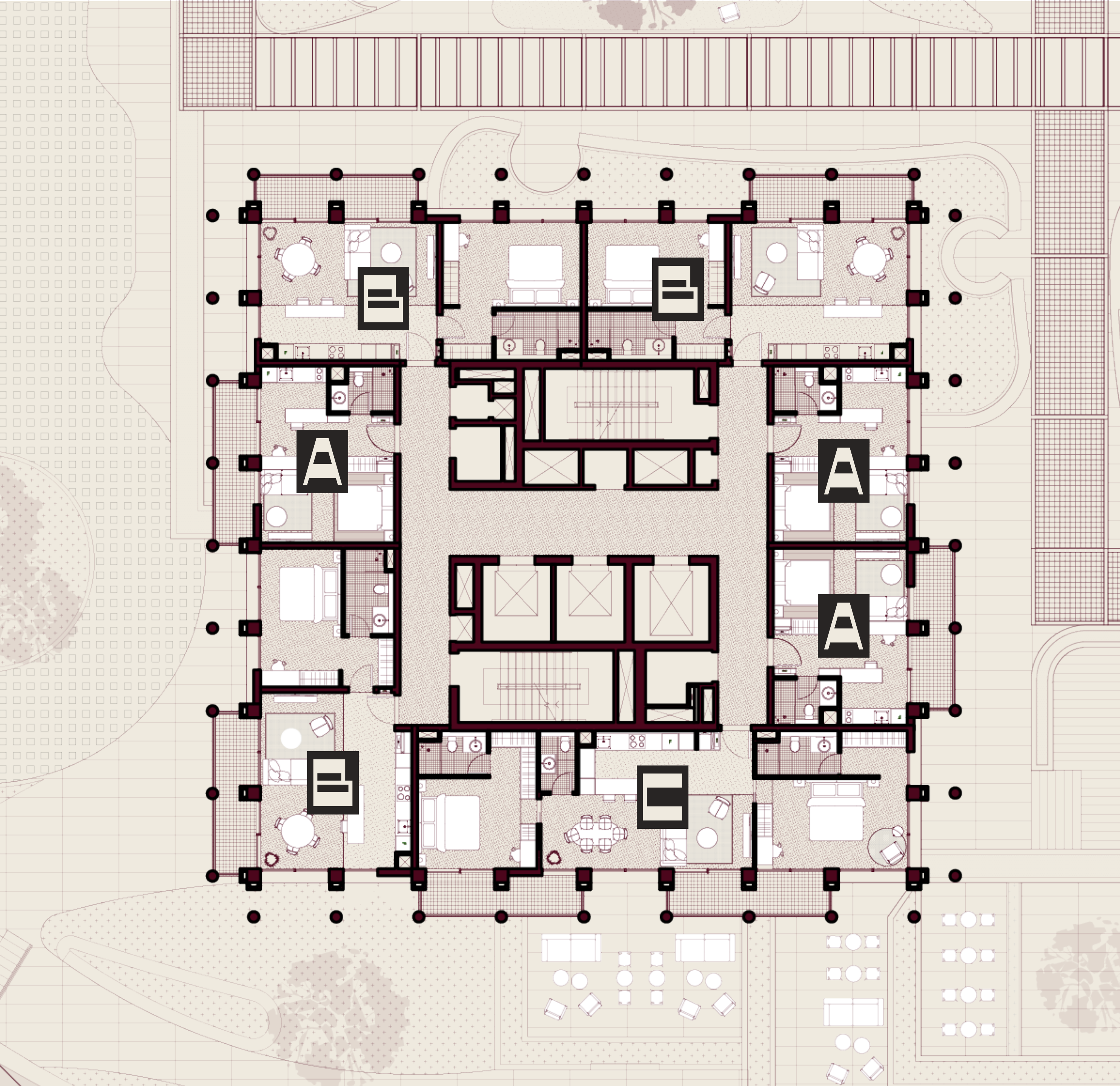
(HOSTING ROOM)



(OUTDOOR LOUNGE)

TYPICAL FLOOR PLAN

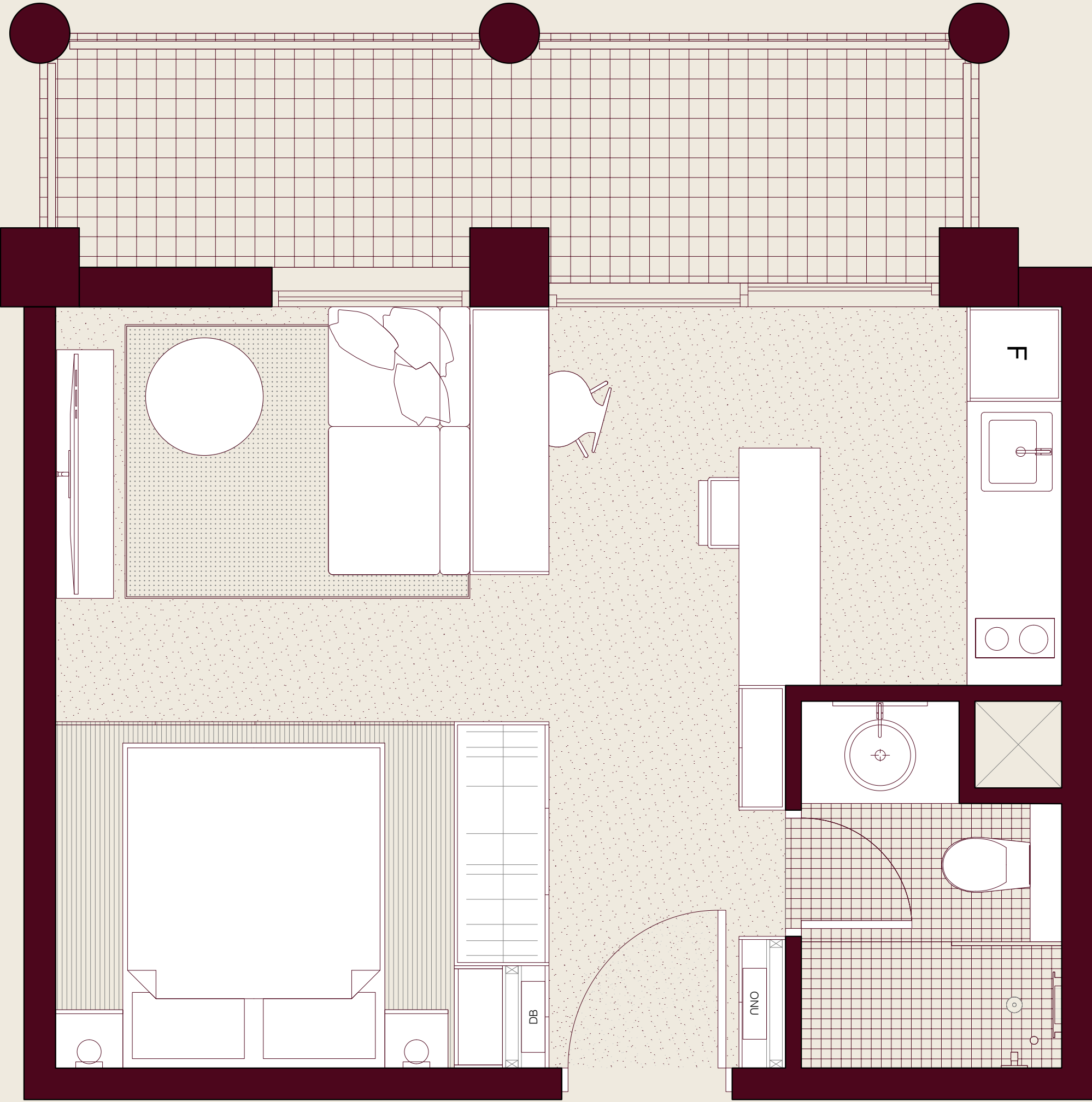
- A** Studio
- B** One Bedroom
- C** Two Bedroom



STUDIO

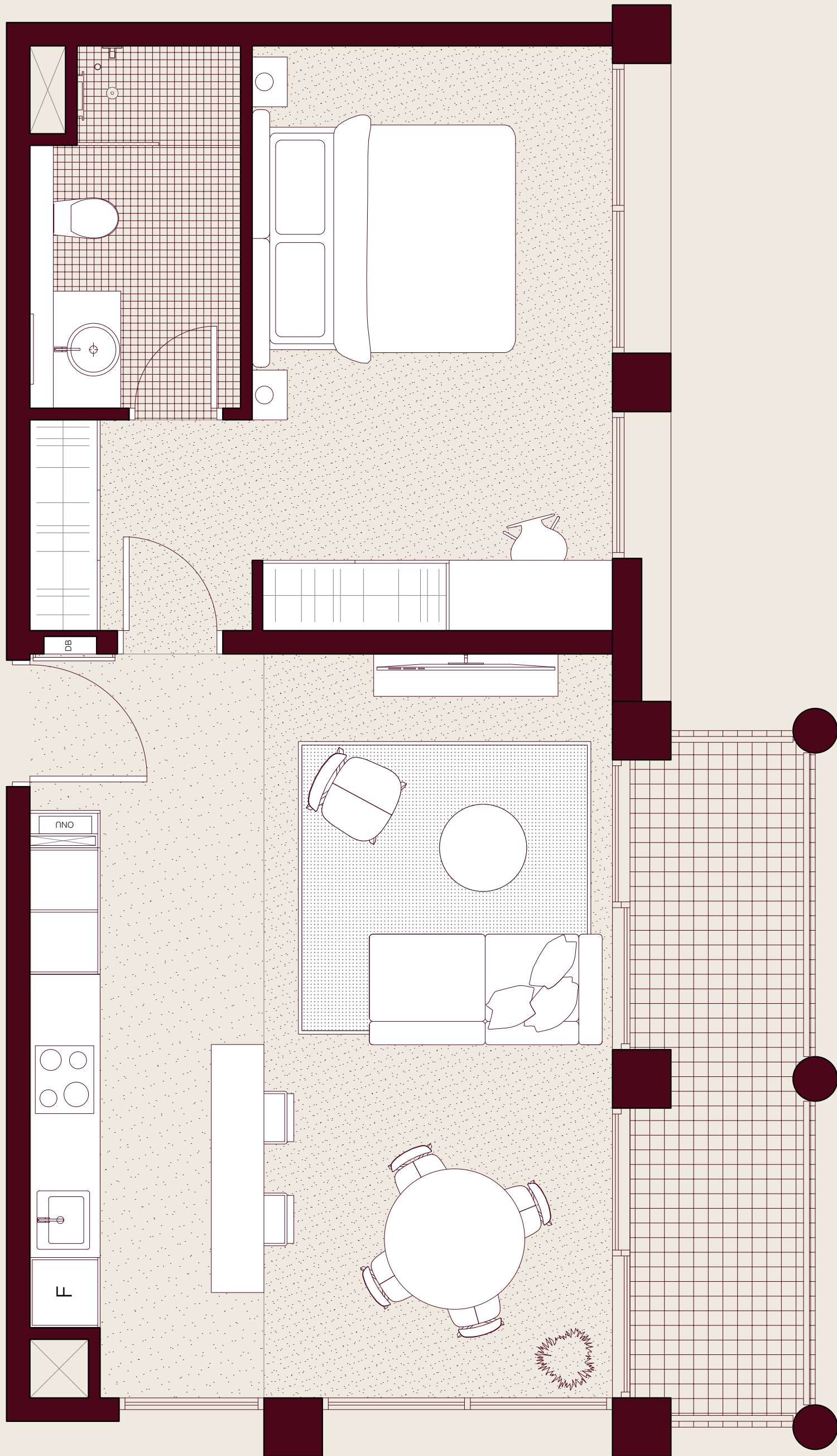
EFFICIENT, OPEN-PLAN LIVING WITH
A STRONG POINT OF VIEW.

NUMBER OF UNITS	(51 UNITS)
INTERNAL SIZE	(348 SQ.FT.)
BALCONY SIZE	(0-104 SQ.FT.)
TOTAL SIZE	(348-452 SQ.FT.)





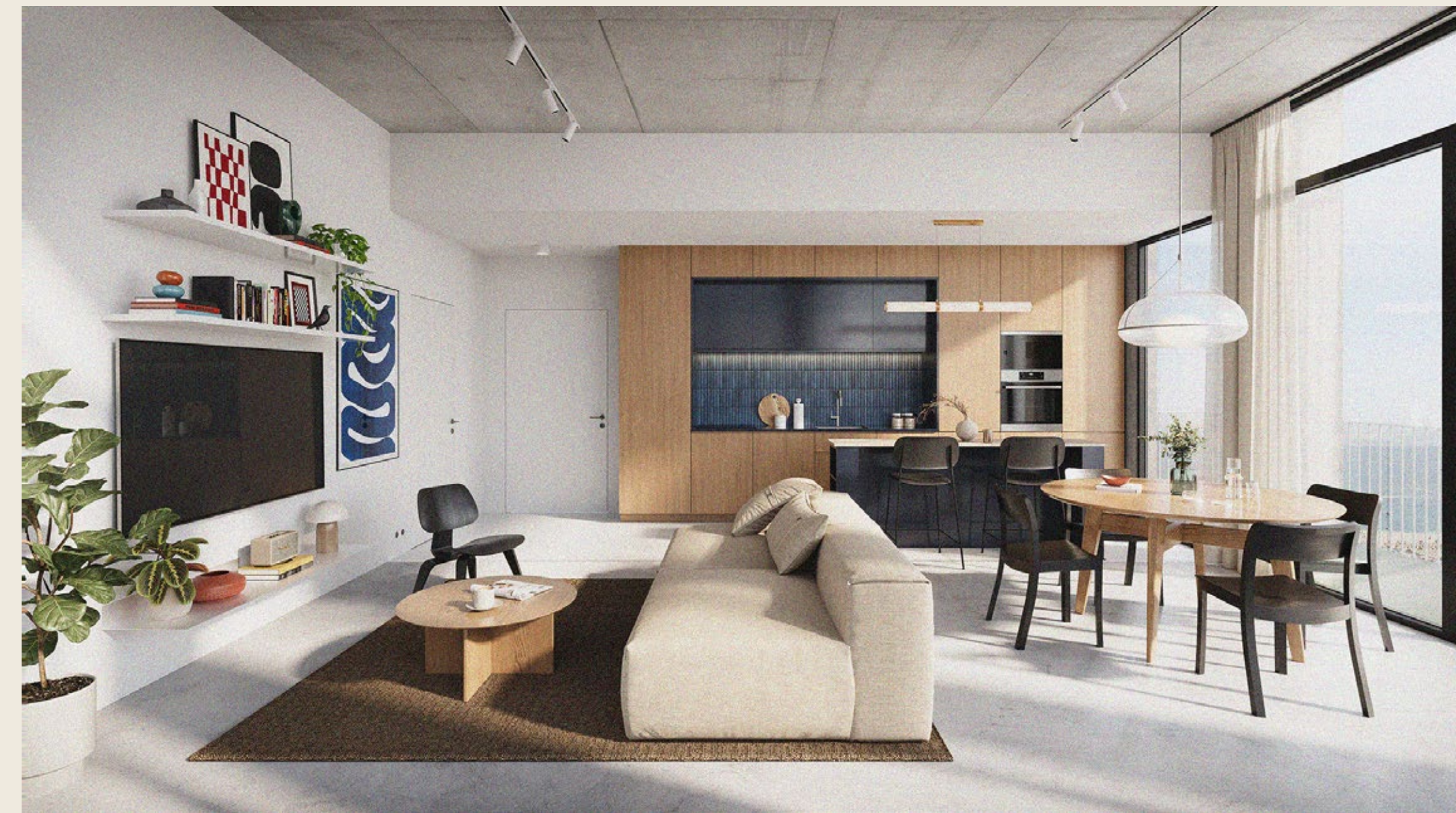
(STUDIO)



ONE BEDROOM A

OPEN-PLAN LIVING AND DINING WITH A
MORE GENEROUS FOOTPRINT.

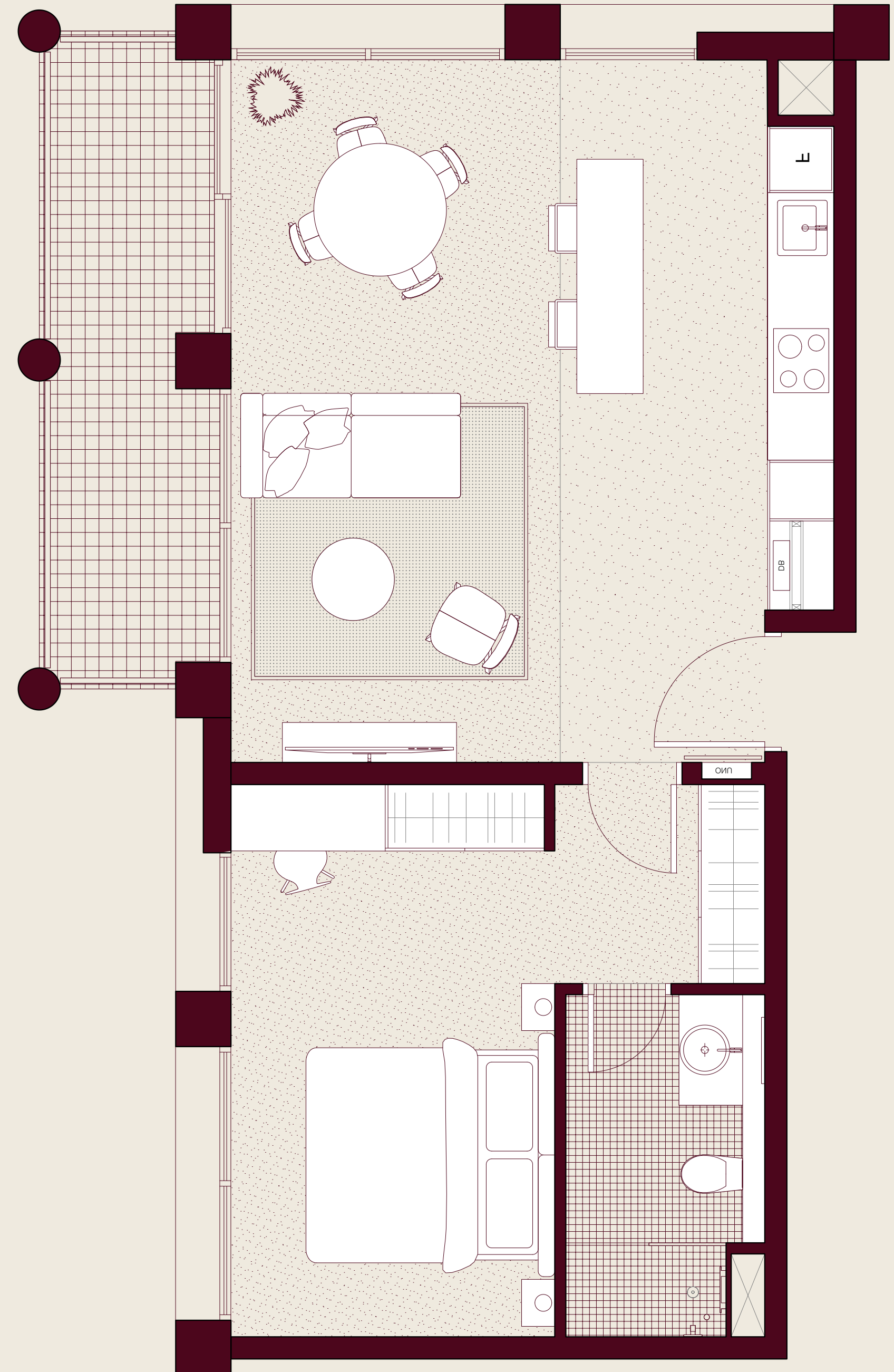
NUMBER OF UNITS	(34 UNITS)
INTERNAL SIZE	(647 SQ.FT.)
BALCONY SIZE	(52-334 SQ.FT.)
TOTAL SIZE	(699-981 SQ.FT.)



ONE BEDROOM B

LARGER BALCONY RANGE AND A MORE
DEFINED SLEEPING ZONE.

NUMBER OF UNITS	(17 UNITS)
INTERNAL SIZE	(662 SQ.FT.)
BALCONY SIZE	(104-334 SQ.FT.)
TOTAL SIZE	(766-996 SQ.FT.)

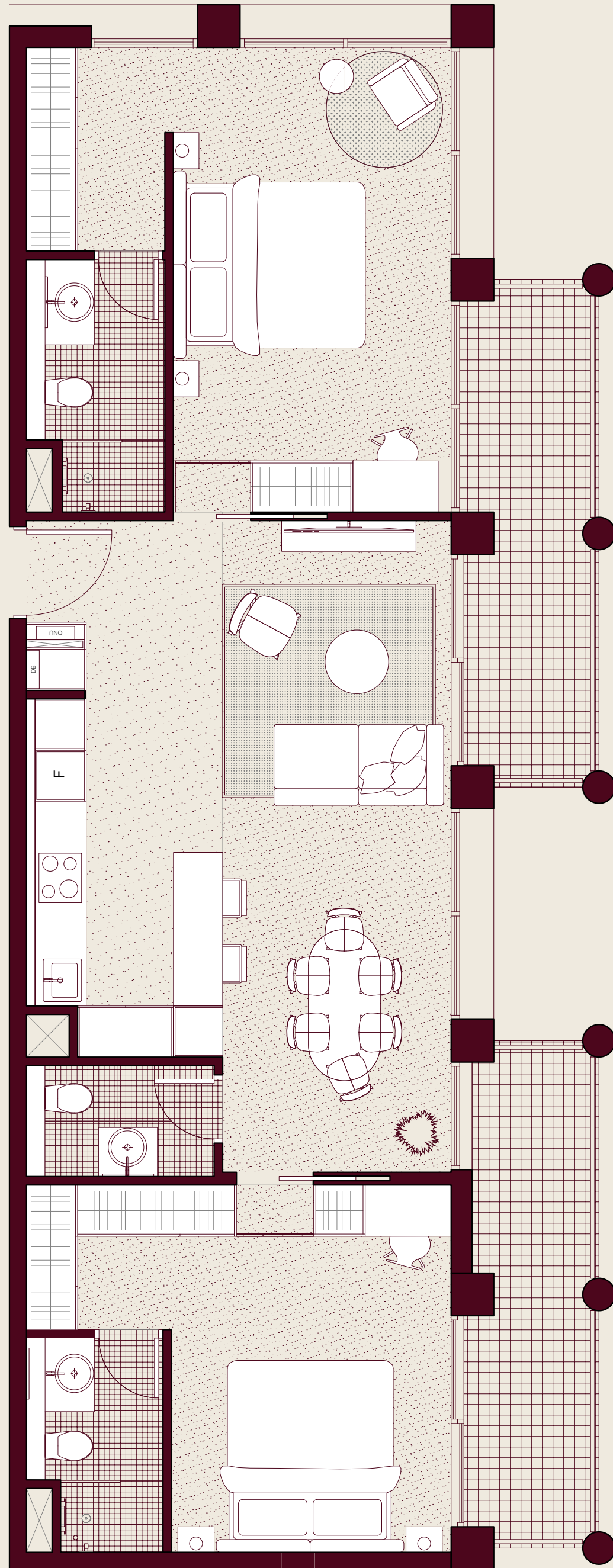


(ONE BEDROOM APARTMENT LOUNGE)





(ONE BEDROOM APARTMENT BEDROOM)



TWO BEDROOMS

MORE ROOM, SAME DESIGN LANGUAGE.

NUMBER OF UNITS	(17 UNITS)
INTERNAL SIZE	(980 SQ.FT.)
BALCONY SIZE	(209-438 SQ.FT.)
TOTAL SIZE	(1189-1418 SQ.FT.)

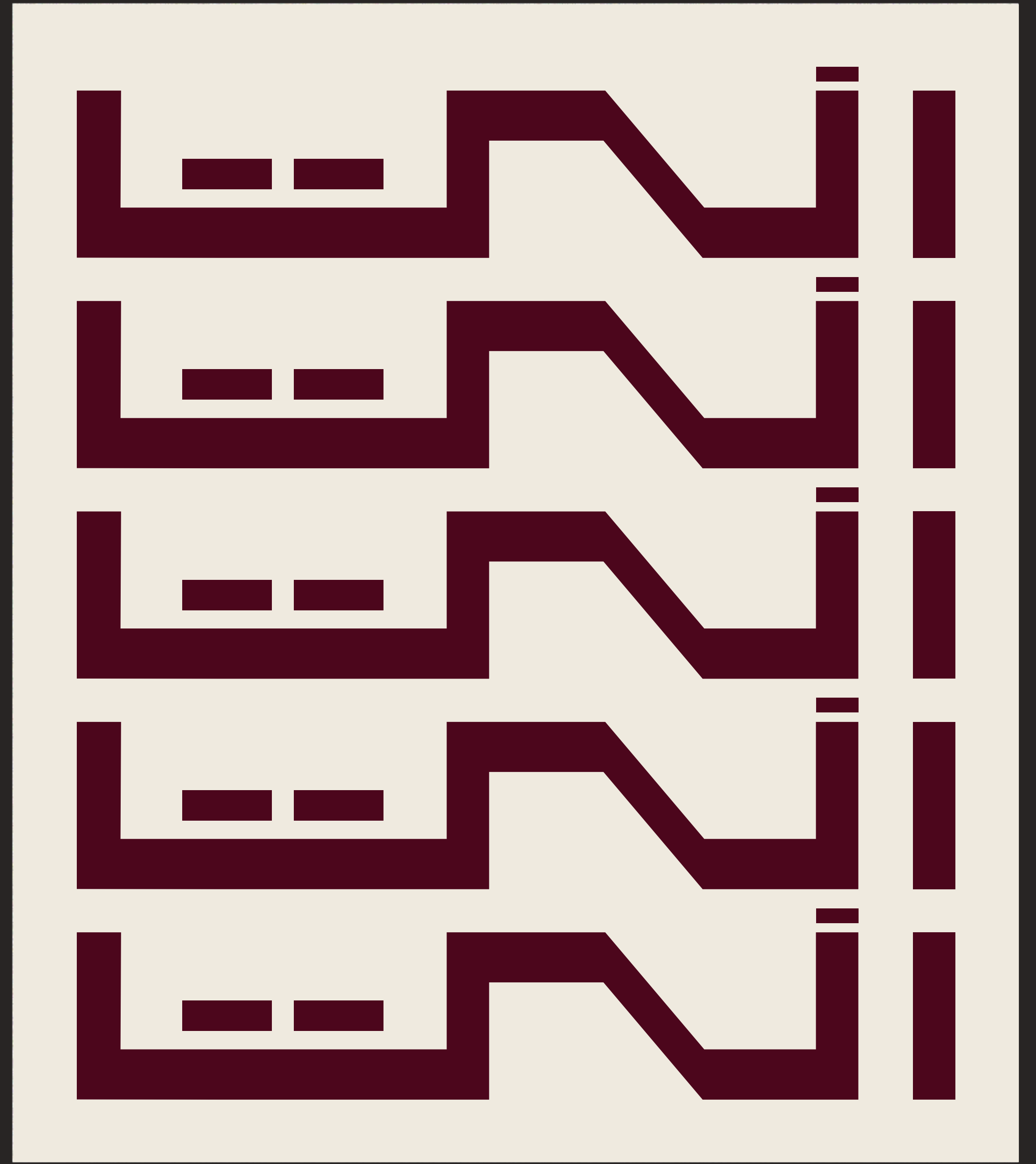


(TWO BEDROOM APARTMENT LOUNGE)





(TWO BEDROOM APARTMENT LOUNGE)





TWO FORCES. ONE VISION.

ENTA brings together HIVE's design-led approach to contemporary living and RAK Properties' long-standing delivery across Ras Al Khaimah. Together, they create a project defined by character, flexibility, and credibility.

HIVE

RAK
PROPERTIES



(All images used are for illustrative purposes only and may not accurately represent the actual size, features, specifications, fittings, and furnishings. The developer reserves the right to make revisions or alterations as deemed necessary)



PHONE

(+971 50 989 9347)

EMAIL

(SALES@ENTARESIDENCES.COM)

WEBSITE

(ENTARESIDENCES.COM)

INSTAGRAM

(@ENTARESIDENCES)

LINKEDIN

(ENTA RESIDENCES)

ENTA