

CITI  
DEVELOPERS

# AMIRA

INTEGRATIVE WELLNESS RESORT



*The World's First Integrative Wellness Resort*

THIS ISN'T JUST A REAL ESTATE PROJECT

*It's a healthy lifestyle choice that helps you  
experience wellness and vitality in your every day*

5

TOWERS

688k+

SQ. FT DEDICATED AREA  
FOR WELLNESS

100%

SEA VIEW





AMRA

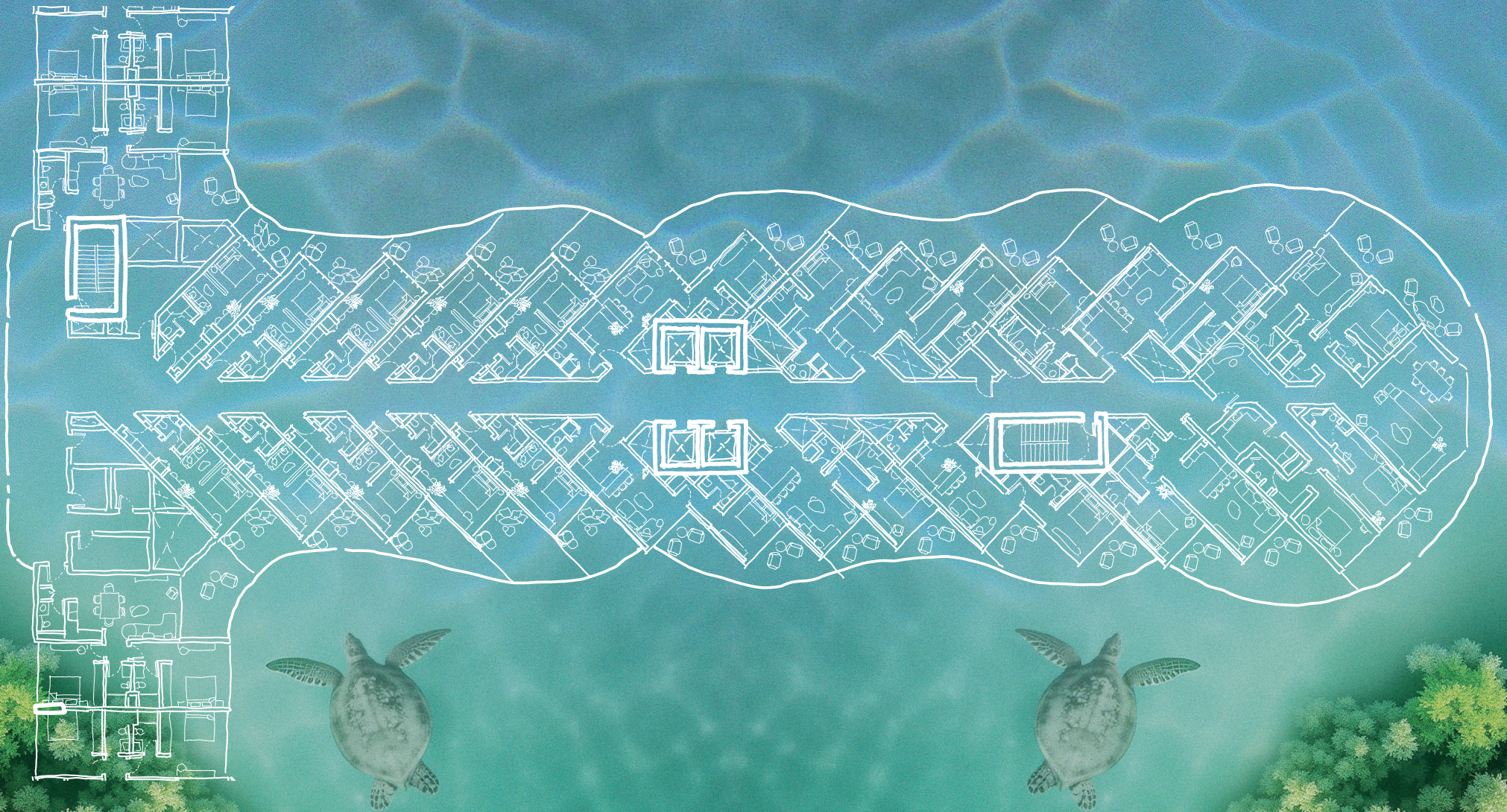
AMRA IS LOCATED IN THE HEART OF  
*Umm Al Quwain's Coastal Sanctuary*

LOCATION

*Connected To The World,  
Immersed In Nature*

- Direct access to Al Khor Mangroves
- 20 minutes to Marjan Island
- 40 minutes to Dubai International Airport
- Close to schools, healthcare, and resorts





## *Every Corner In The Resort Is Sea View*

Soothing sea and lagoon views activate the brain's natural relaxation response, lowering stress hormones, uplifting mood, restoring focus, and creating emotional balance

**FULLY FURNISHED  
& SERVICED APARTMENTS**

*Starting from **only 690k** with access to  
688,000 sq. ft dedicated area for wellness*

70/30 Payment Plan with  
3 Years Post Handover Period

---

Delivery By Q4, 2029





## *Fully Furnished Serviced Apartments*

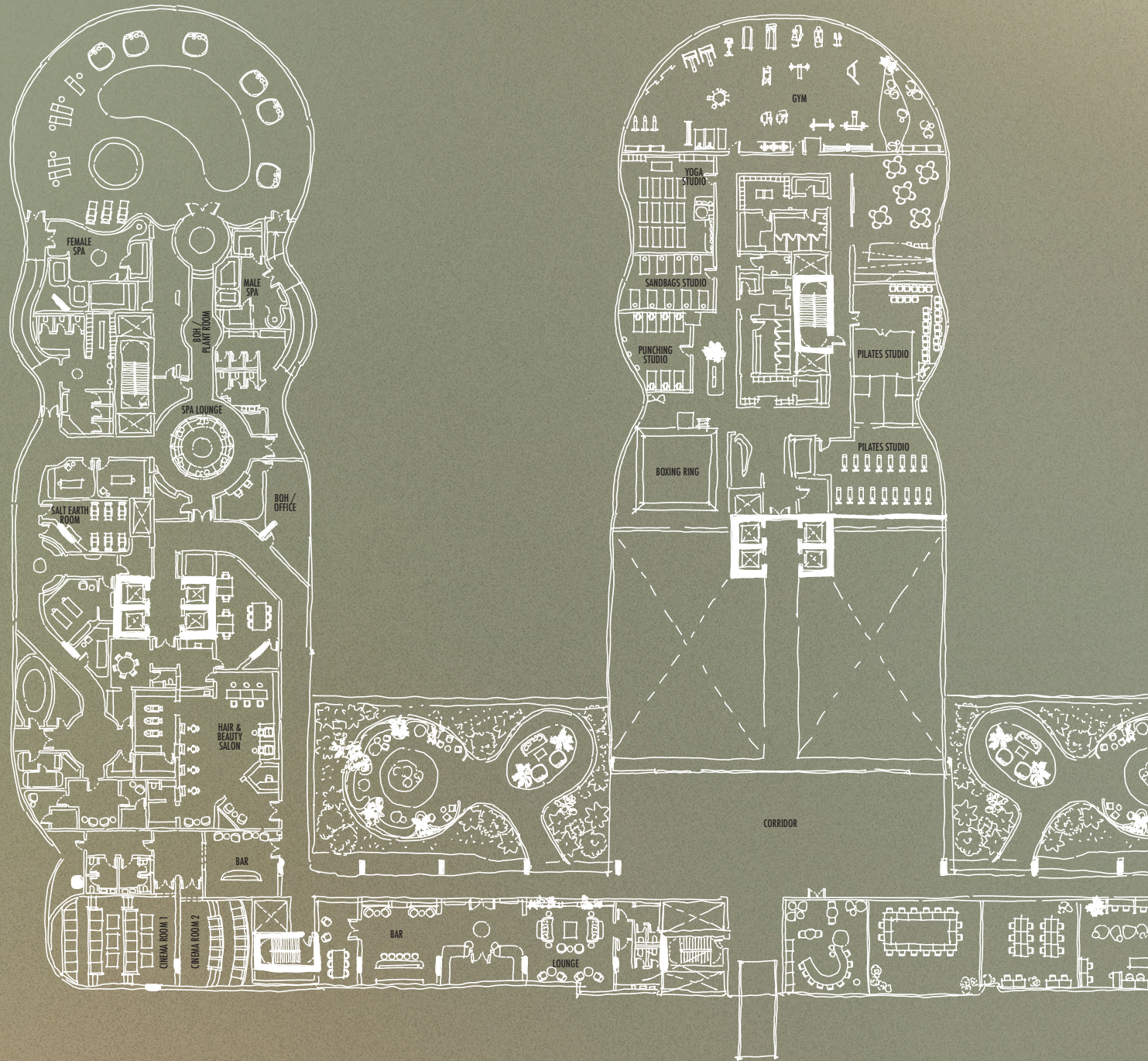
	<b>Average Area</b>	<b>Starting Prices</b>
Studio	500 SFT	AED 690K
1 Bedroom	846 SFT	AED 1.1M
2 Bedroom	1387 SFT	AED 1.6M
3 Bedroom	1915 SFT	AED 1.85M
4 Bedroom	2937 SFT	AED 4.1M

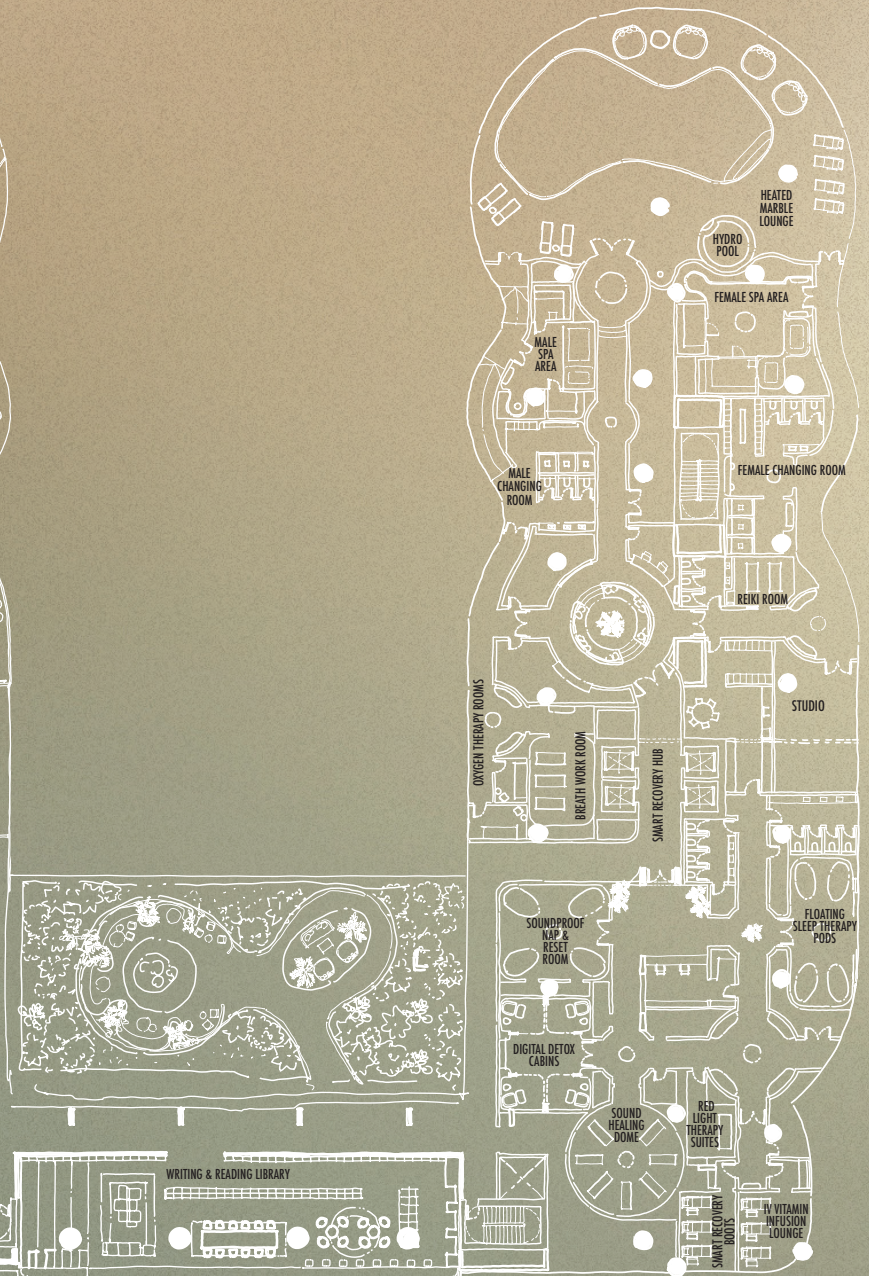
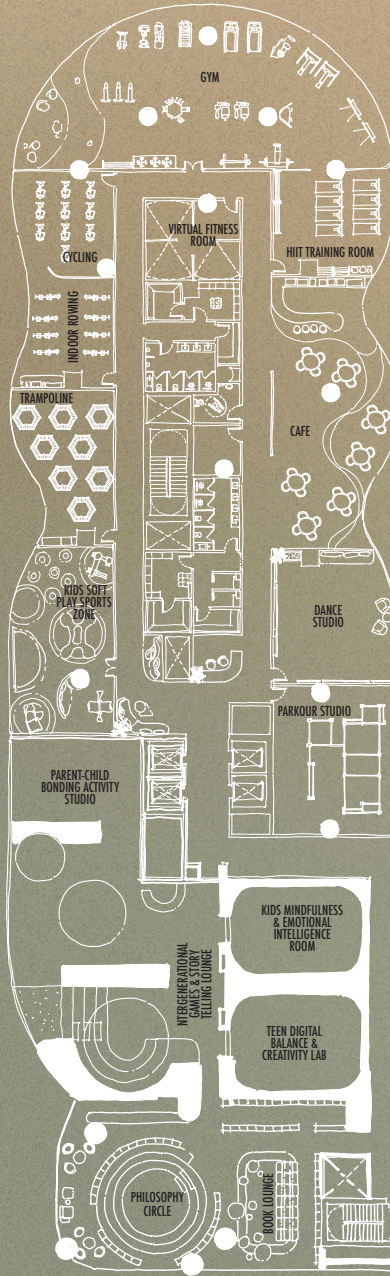
## *Project Recap*

- 5 Beachfront Towers
- 2,931,953 sq.ft Built-Up Area
- Fully serviced apartments
- 688k sq. ft of wellness & lifestyle amenities
- All units & amenities are sea view
- 140+ Facilities across dedicated zones
- Dedicated Marina for private yachts
- HASSLE FREE HIGH ROI RENTING

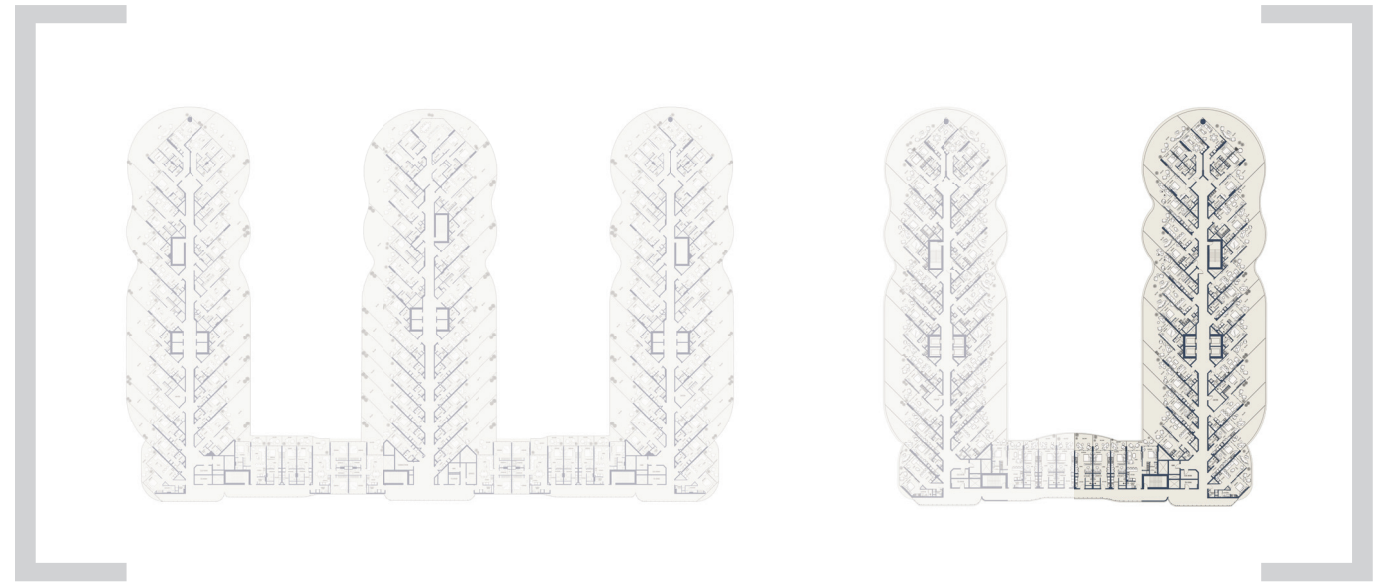


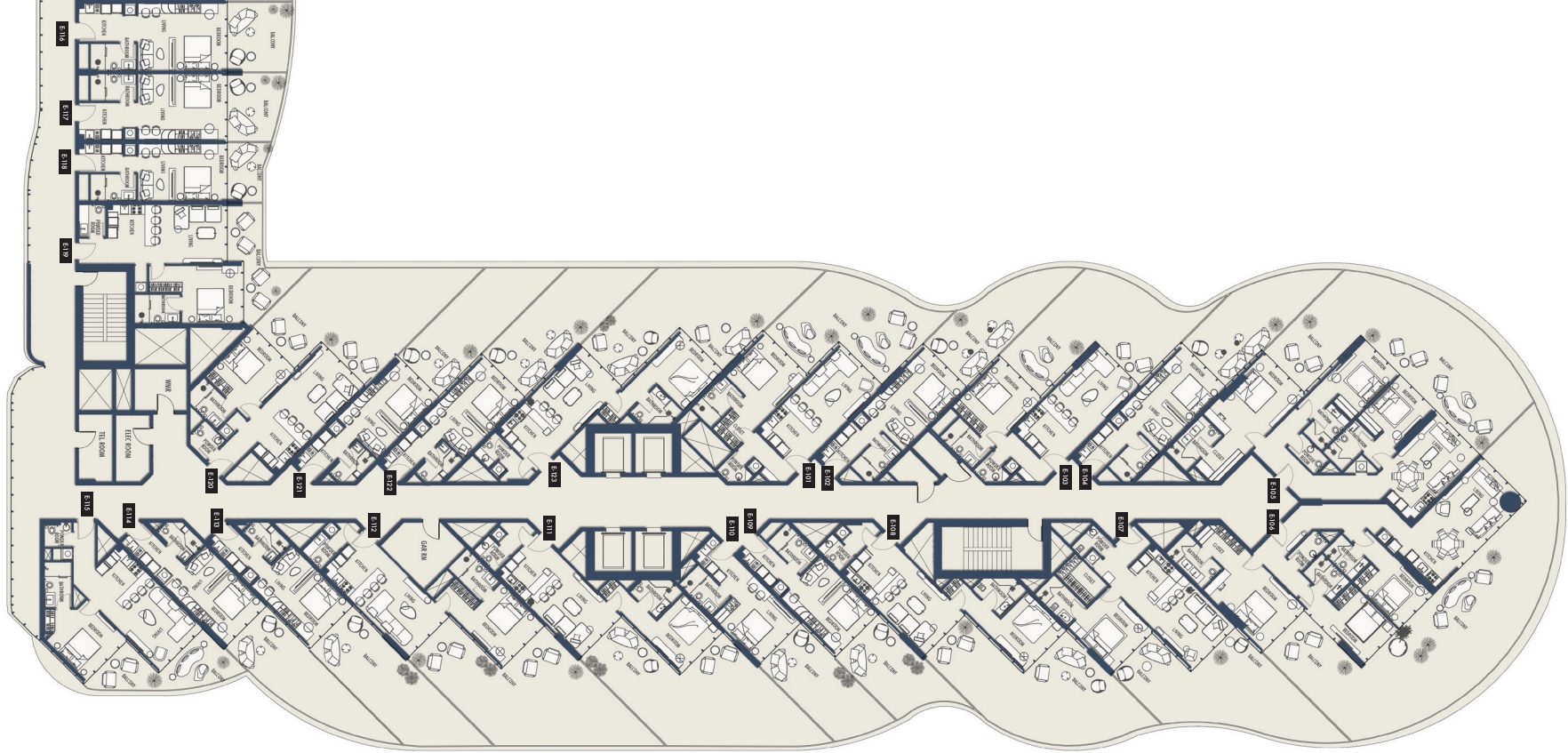
# Amenities Floor





Floor *1* ST









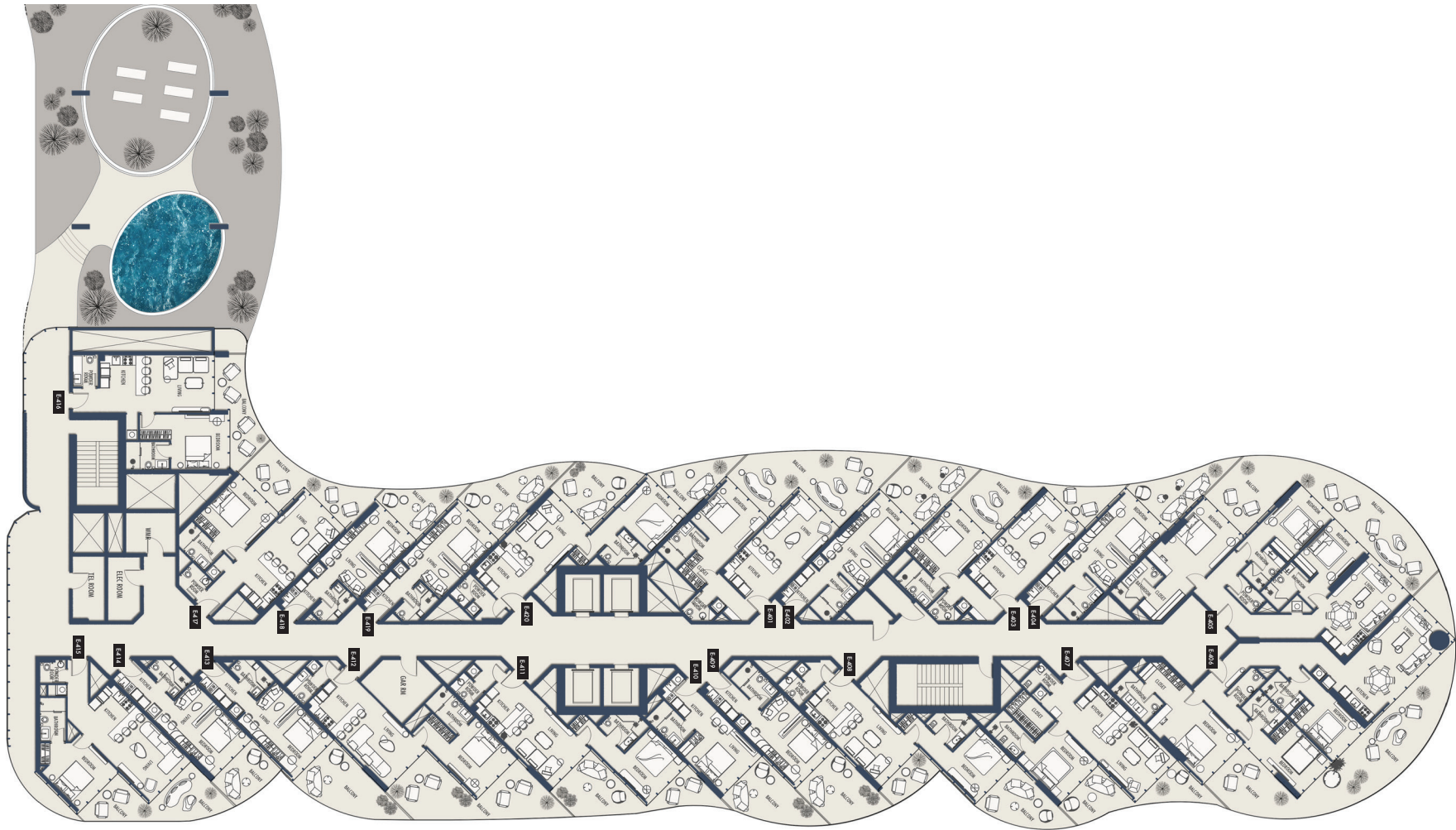
Typical Floor



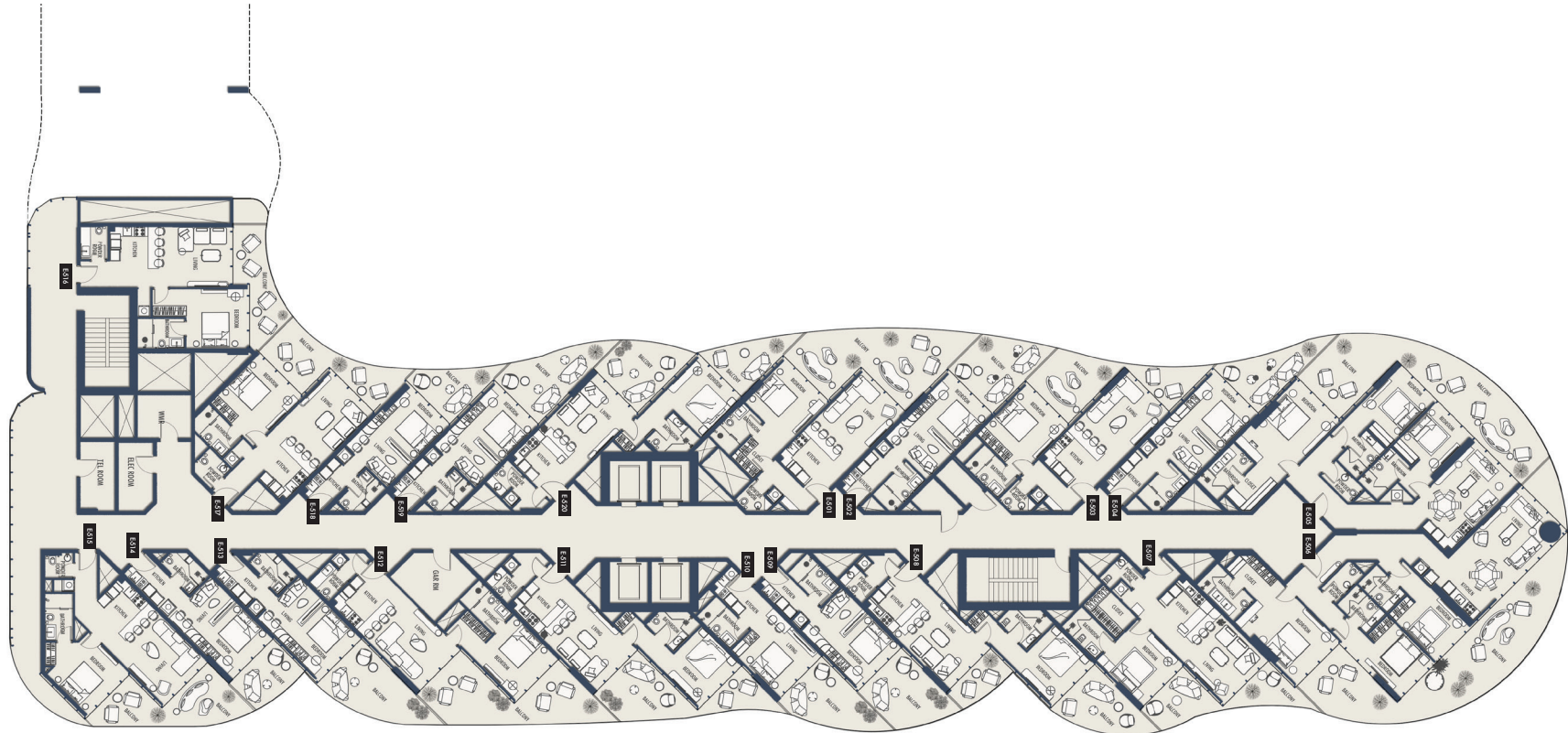
# Typical Floor 2



# 4<sup>TH</sup> & 12<sup>TH</sup> FLOOR



# 5<sup>TH</sup>, 6<sup>TH</sup>, 13<sup>TH</sup> & 14<sup>TH</sup> FLOOR





Typical Floor 3



Tower E



RENDERING

RENDERING

RENDERING

RENDERING

RENDERING

RENDERING

RENDERING

RENDERING

RENDERING

RENDERING

## Three Bedroom

Plush, sandy-coloured sofas and armchairs are framed by floor-to-ceiling windows in the three-bedroom apartments, offering meditative views of the sparkling lagoon





**3BR-TYPE 1A**

*2527.15*

Suite Area 1279.29 Sqft

Balcony Area 1247.86 Sqft

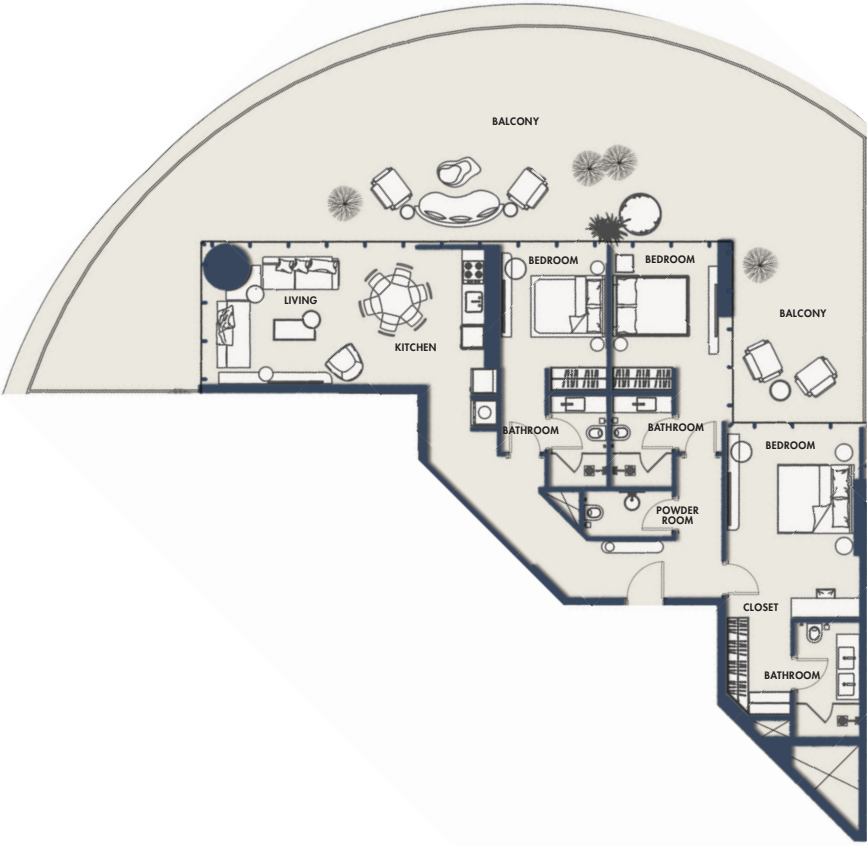
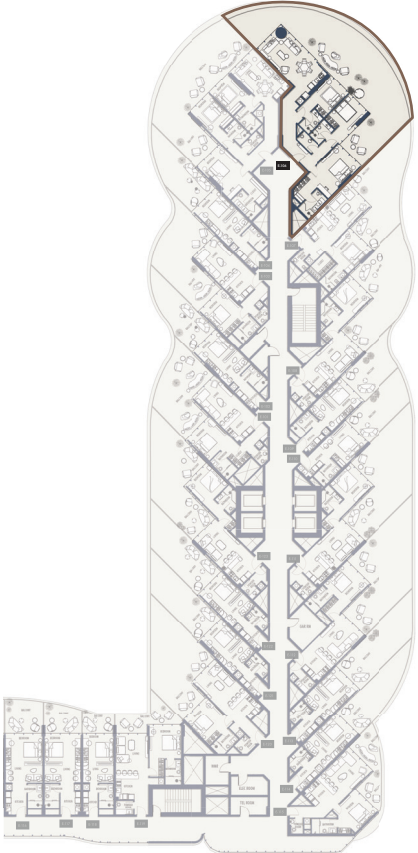
1 Parking

**FLOORS**

1ST

**SUITE NO.**

E106



## 3BR-TYPE 1B

*1901.88* SQFT

Suite Area 1276.82 Sqft

Balcony Area 625.06 Sqft

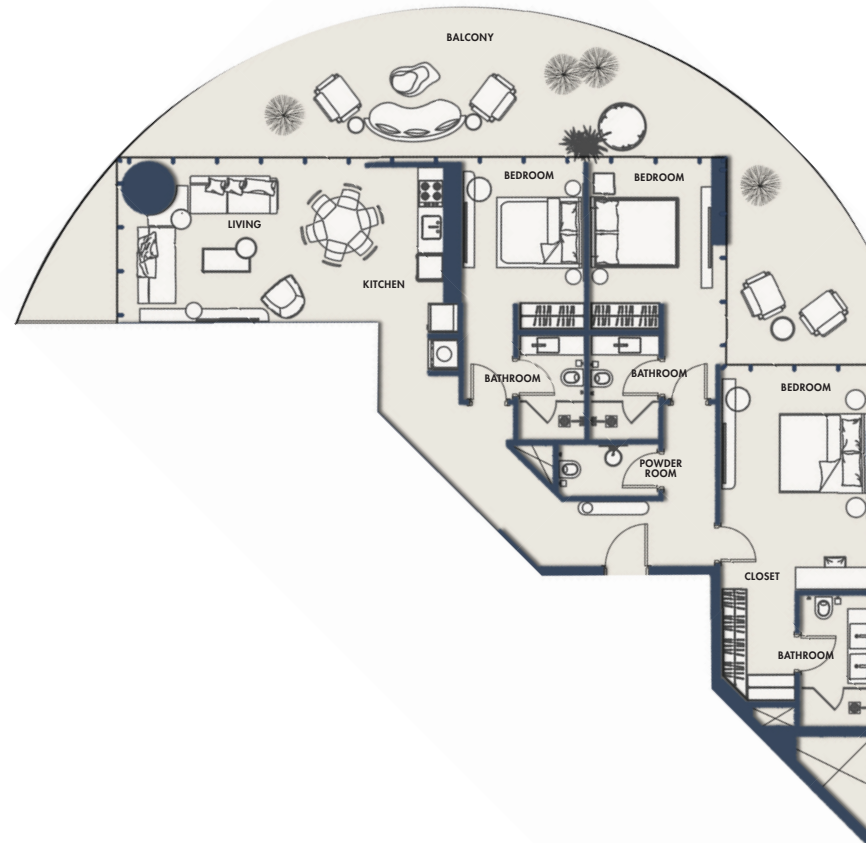
1 Parking

## FLOORS

2nd, 3rd, 4th, 5th, 6th, 7th, 8th,  
9th, 10th, 11th, 12th, 13th, 14th

## SUITE NO.

E206, E306, E406, E506, E606  
E706, E806, E906, E1006,  
E1106, E1206, E1306, E1406



## 3BR-TYPE 2A

*2013.82* SQFT

Suite Area 1160.24 Sqft

Balcony Area 853.58 Sqft

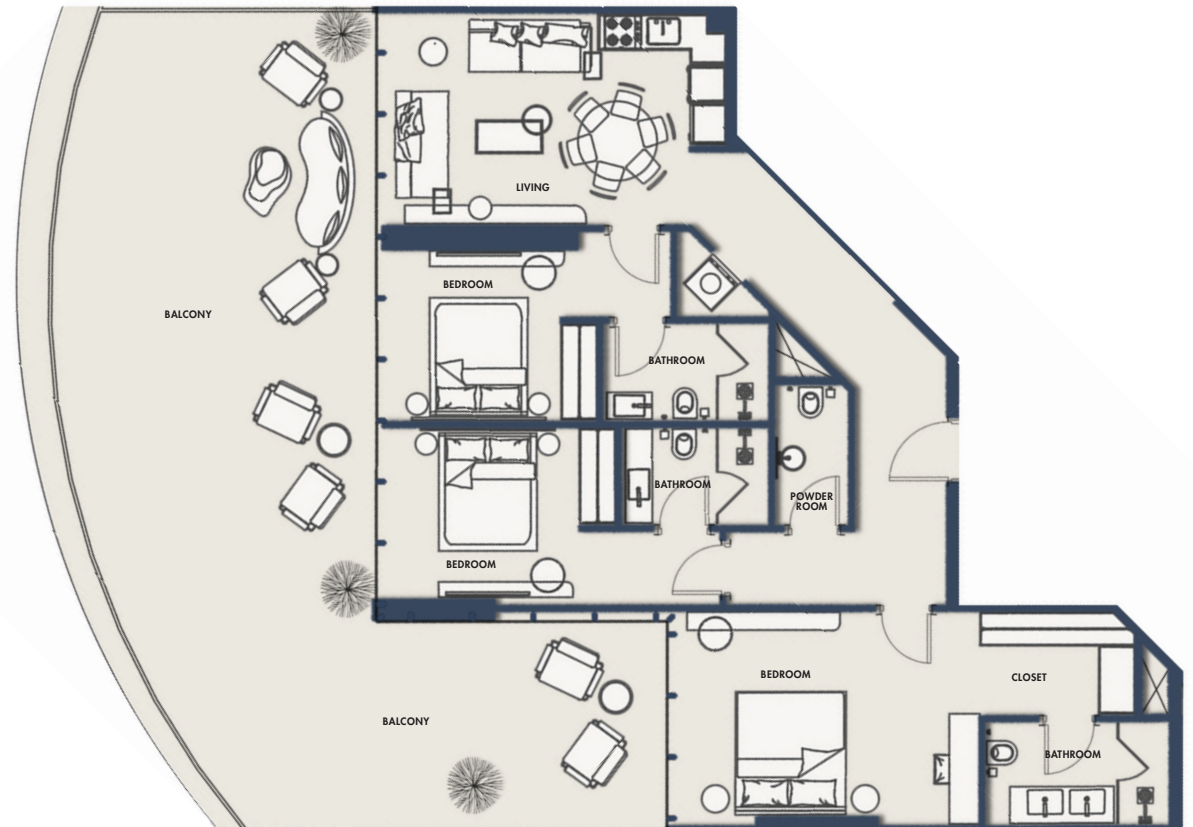
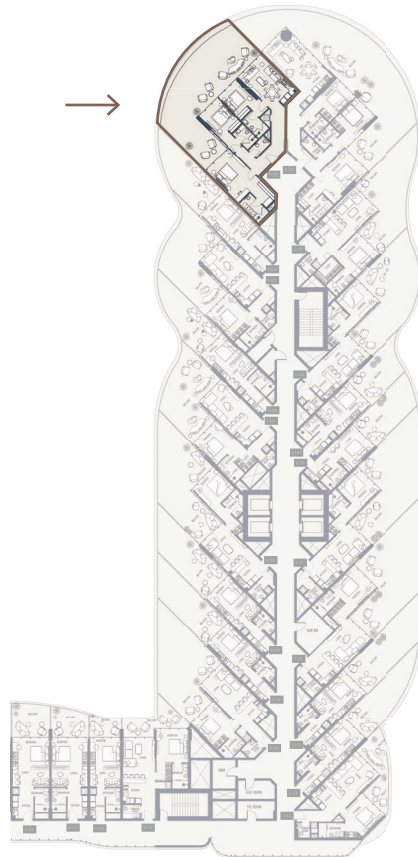
1 Parking

## FLOORS

1ST

## SUITE NO.

E105



## 3BR-TYPE 2B

*1651.83* SQFT

Suite Area 1159.81 Sqft

Balcony Area 492.02 Sqft

1 Parking

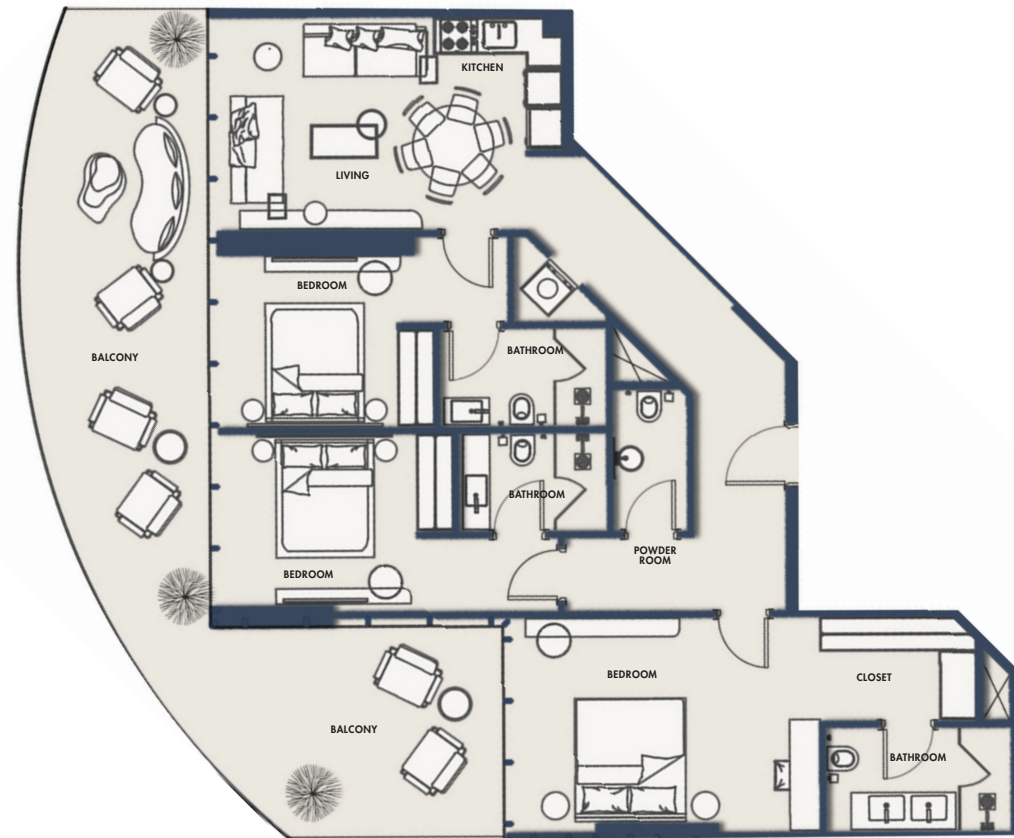


## FLOORS

2nd, 3rd, 4th, 5th, 6th, 7th, 8th,  
9th, 10th, 11th, 12th, 13th, 14th

## SUITE NO.

E205, E305, E405, E505, E605  
E705, E805, E905, E1005,  
E1105, E1205, E1305, E1405



CITI  
DEVELOPERS



## One Bedroom

Cream-coloured tones and off-white hues come together in a charming and cosy one-bedroom home that immediately uplifts the mood, enhances focus, and creates a sense of calm





## 1BR-TYPE 1A

**800.94** SQFT

Suite Area 576.08 Sqft

Balcony Area 224.86 Sqft

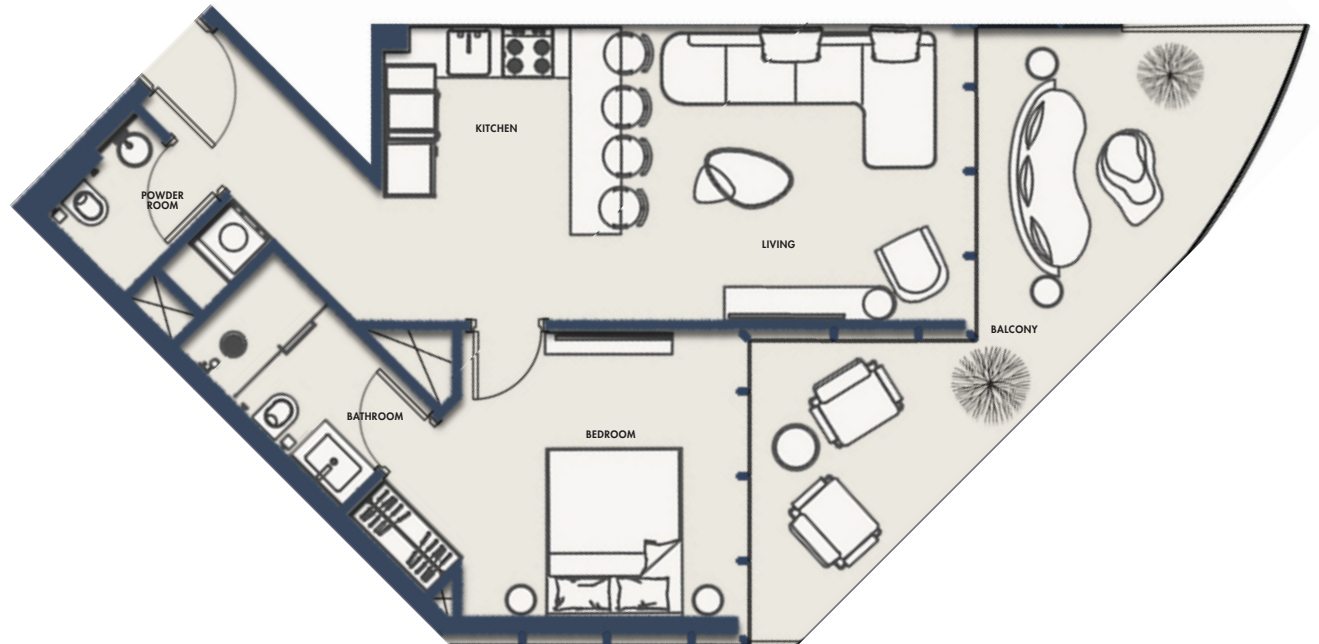
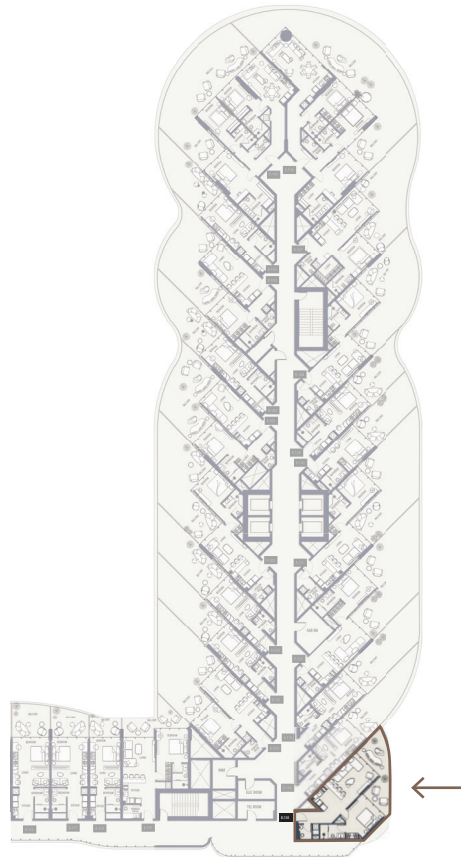
1 Parking

## FLOORS

1ST

## SUITE NO.

E115



## 1BR-TYPE 1B

# 857.24 SQFT

Suite Area 576.08 Sqft

Balcony Area 281.15 Sqft

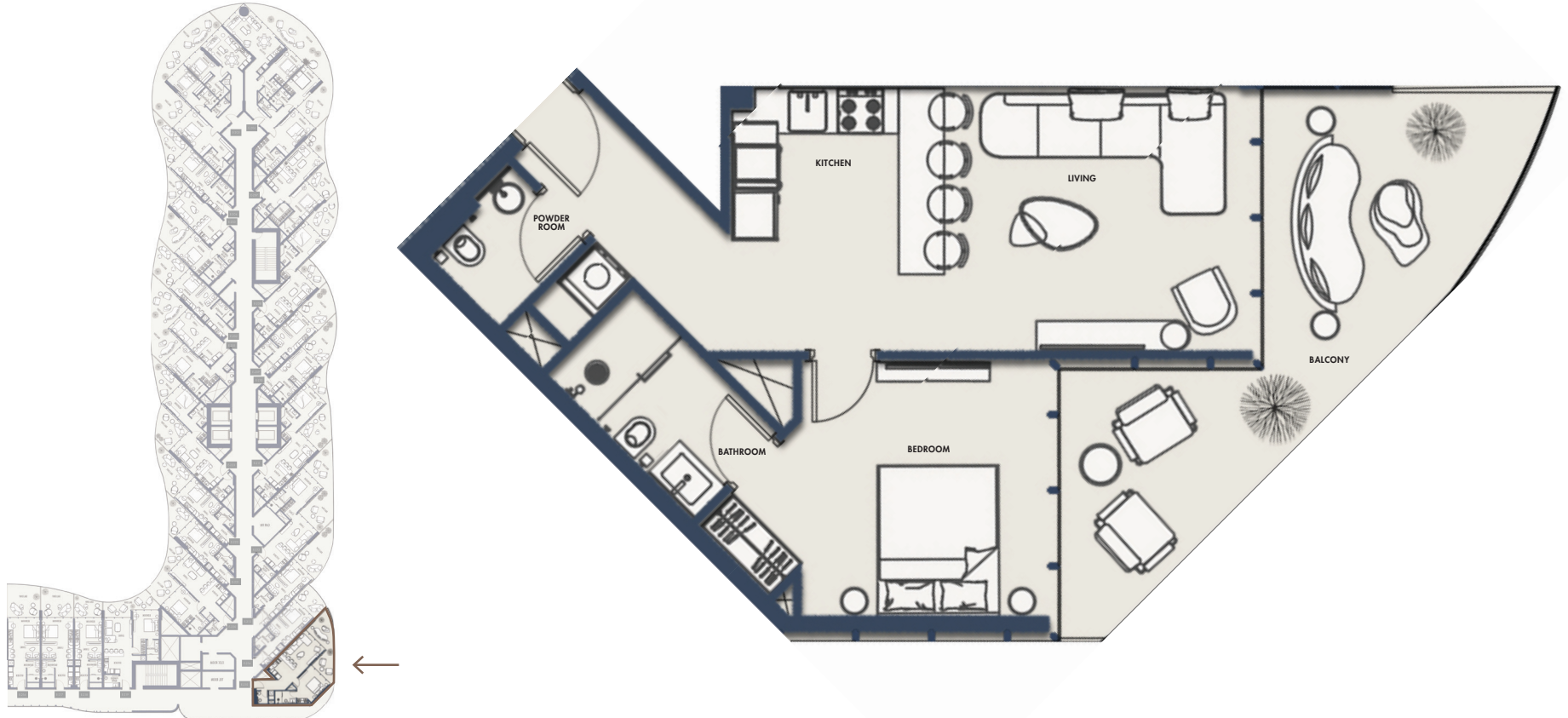
1 Parking

## FLOORS

2nd, 3rd, 4th, 5th, 6th, 7th, 8th,  
9th, 10th, 11th, 12th, 13th, 14th

## SUITE NO.

D215, D315, D415, D515, D615  
D715, D815, D915, D1015,  
D1115, D1215, D1315, D1415



## 1BR-TYPE 2A

*1252.60* SQFT

Suite Area 573.72 Sqft

Balcony Area 678.88 Sqft

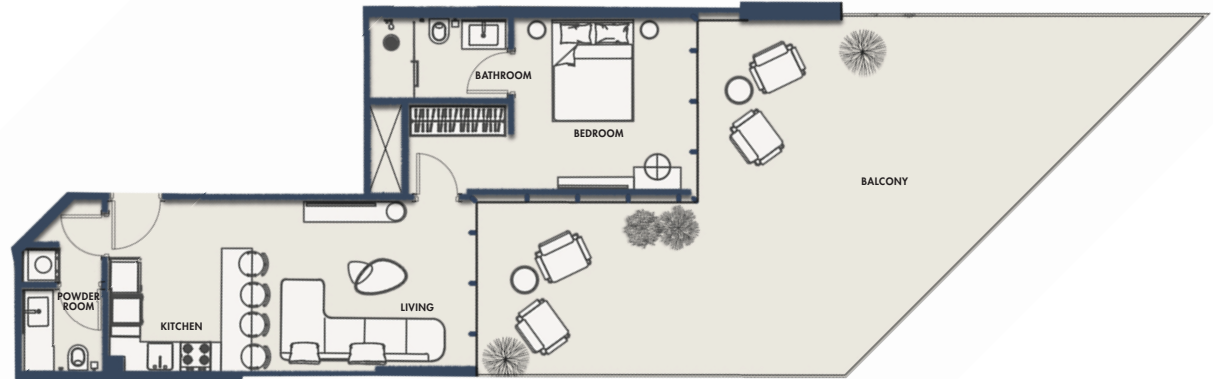
1 Parking

## FLOORS

1ST

## SUITE NO.

E112



## 1BR-TYPE 2B

884.9 SQFT

Suite Area 573.82 Sqft

Balcony Area 311.18 Sqft

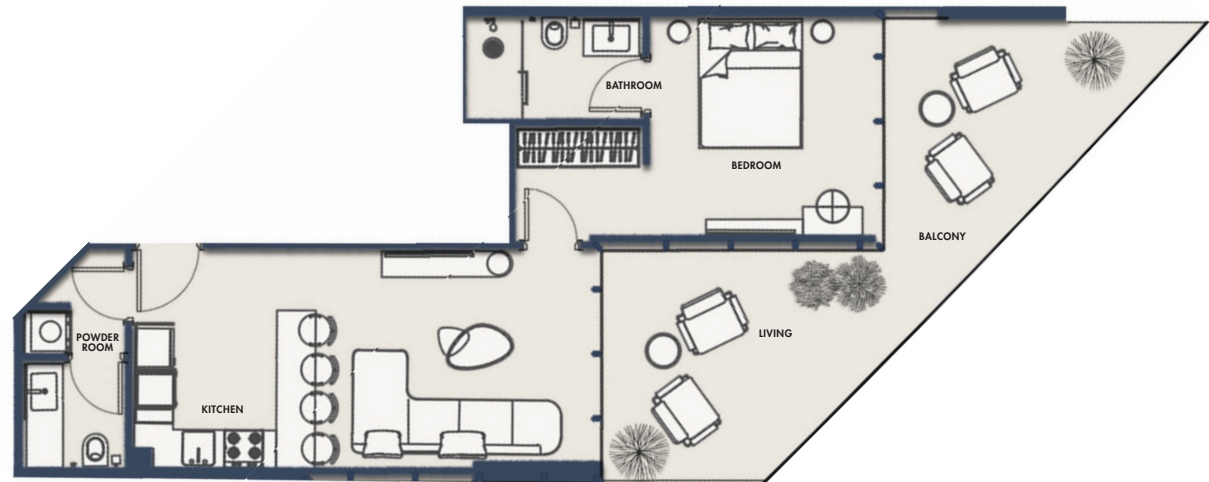
1 Parking

## FLOORS

2nd, 3rd, 4th, 5th, 6th, 7th, 8th,  
9th, 10th, 11th, 12th, 13th, 14th

## SUITE NO.

E212, E312, E412, E512, E612  
E712, E812, E912, E1012,  
E1112, E1212, E1312, E1412



## 1BR-TYPE 3A

**1227.62 SQFT**

Suite Area 571.89 Sqft

Balcony Area 655.74 Sqft

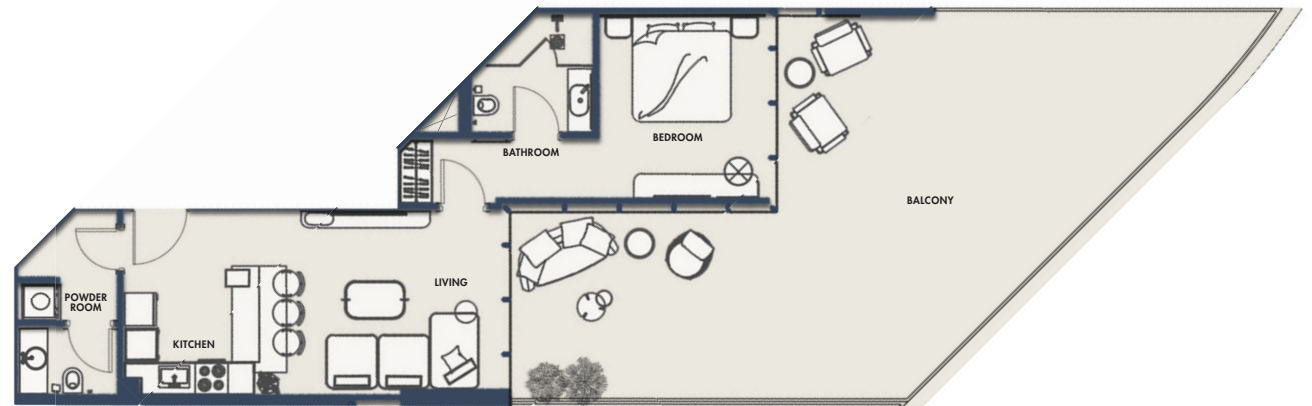
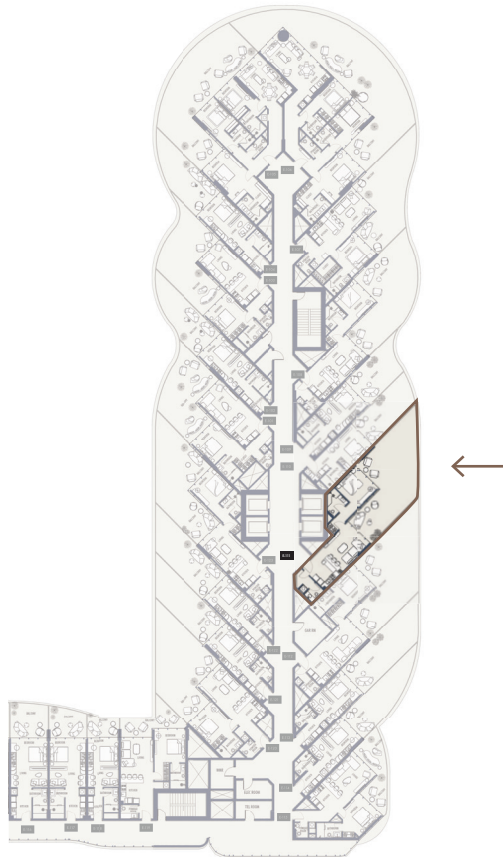
1 Parking

## FLOORS

1ST

## SUITE NO.

E111



## 1BR-TYPE 3B

# 808.26 SQFT

Suite Area 568.77 Sqft

Balcony Area 239.5 Sqft

1 Parking

## FLOORS

2nd, 3rd, 4th, 5th, 6th, 7th, 8th,  
9th, 10th, 11th, 12th, 13th, 14th

## SUITE NO.

E211, E311, E411, E511, E611  
E711, E811, E911, E1011,  
E1111, E1211, E1311, E1411



## 1BR-TYPE 4A

*1180.91* SQFT

Suite Area 569.09 Sqft

Balcony Area 611.82 Sqft

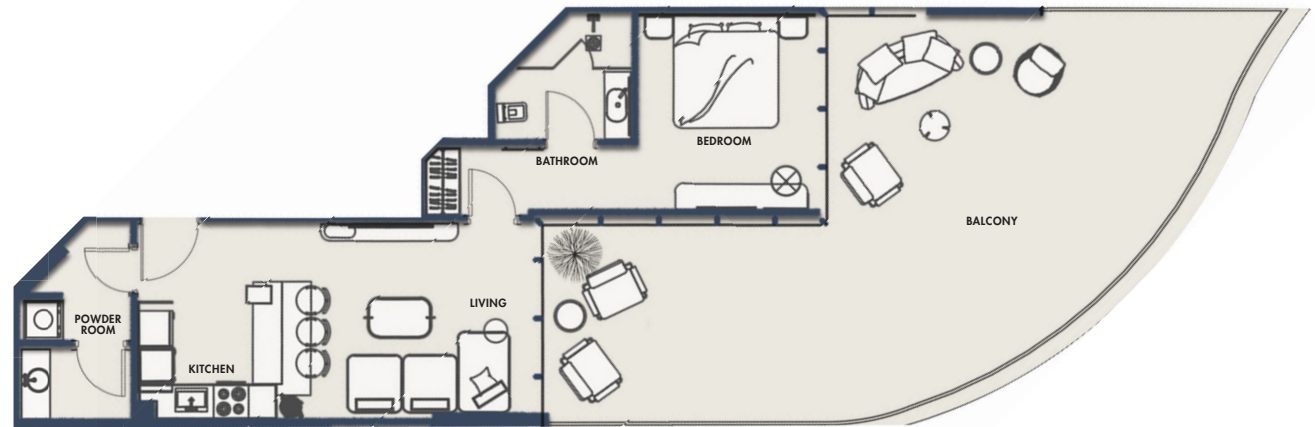
1 Parking

## FLOORS

1ST

## SUITE NO.

E108



## 1BR-TYPE 4B

# 787.27 SQFT

Suite Area 565.32 Sqft

Balcony Area 221.95 Sqft

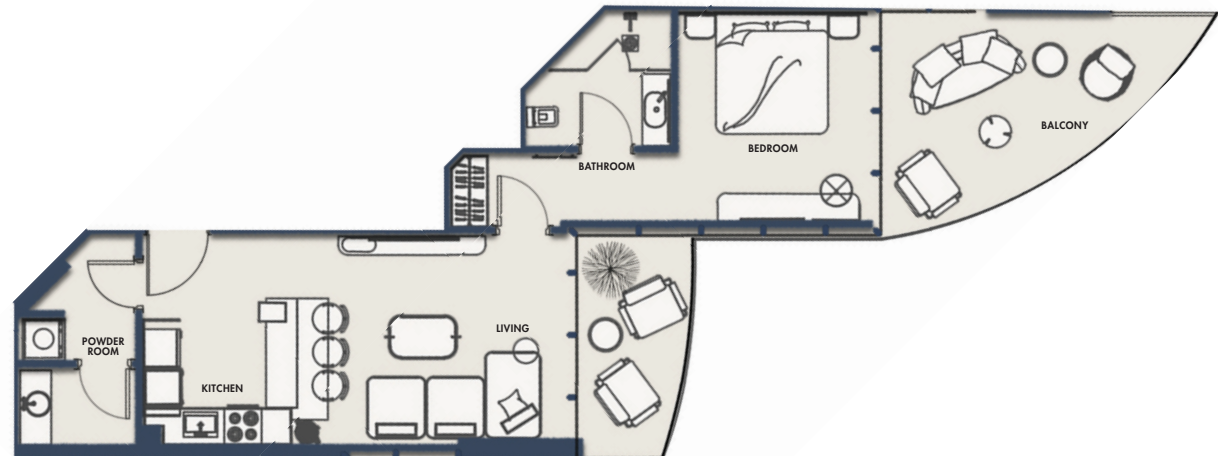
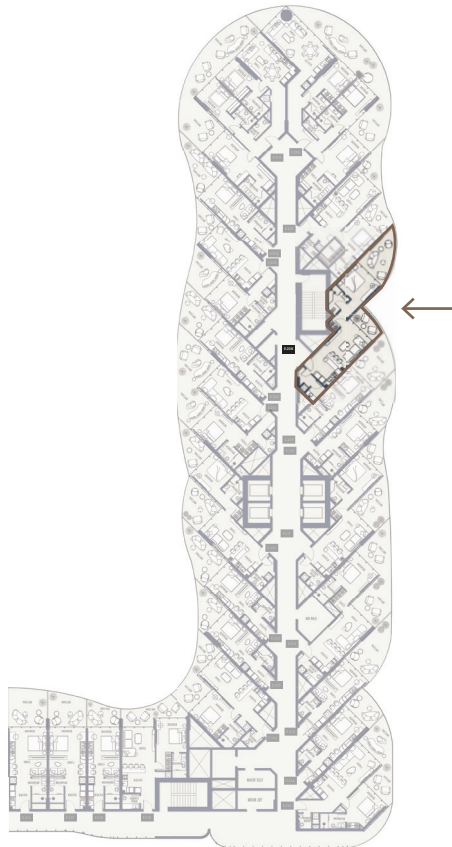
1 Parking

## FLOORS

2nd, 3rd, 4th, 5th, 6th, 7th, 8th,  
9th, 10th, 11th, 12th, 13th, 14th

## SUITE NO.

E208, E308, E408, E508, E608  
E708, E808, E908, E1008,  
E1108, E1208, E1308, E1408



## 1BR-TYPE 5A

# 1160.35 SQFT

Suite Area 628.61 Sqft

Balcony Area 531.74 Sqft

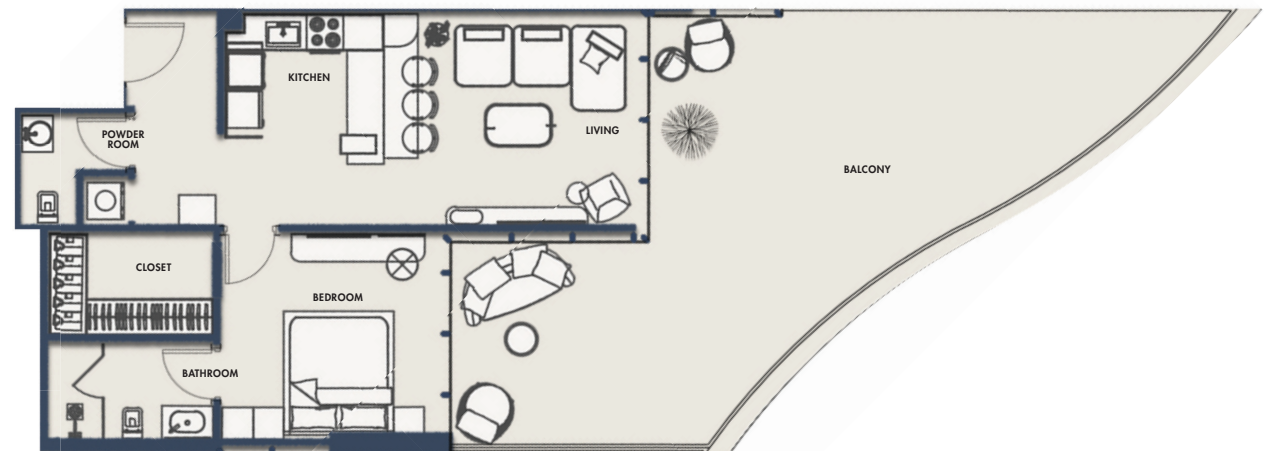
1 Parking

## FLOORS

1ST

## SUITE NO.

E107



## 1BR-TYPE 5B

**816.87 SQFT**

Suite Area 632.16 Sqft

Balcony Area 184.71 Sqft

1 Parking

## FLOORS

2nd, 3rd, 4th, 5th, 6th, 7th, 8th,  
9th, 10th, 11th, 12th, 13th, 14th

## SUITE NO.

E207, E307, E407, E507, E607  
E707, E807, E907, E1007,  
E1107, E1207, E1307, E1407



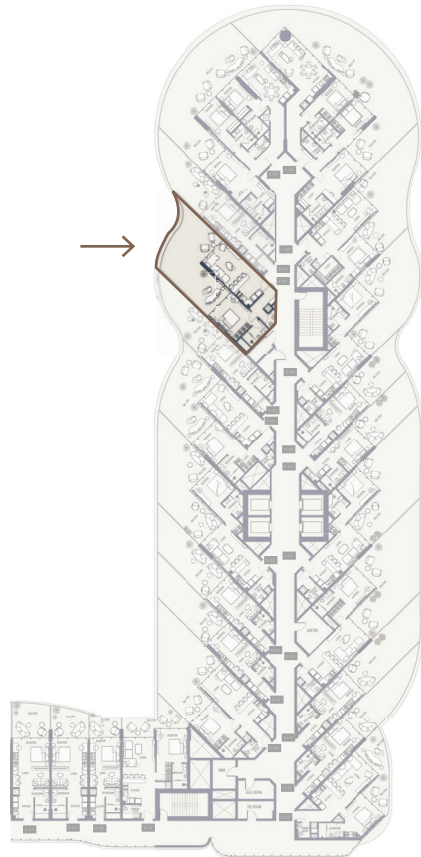
## 1BR-TYPE 6A

**1104.38 SQFT**

Suite Area 582.33 Sqft

Balcony Area 522.05 Sqft

1 Parking

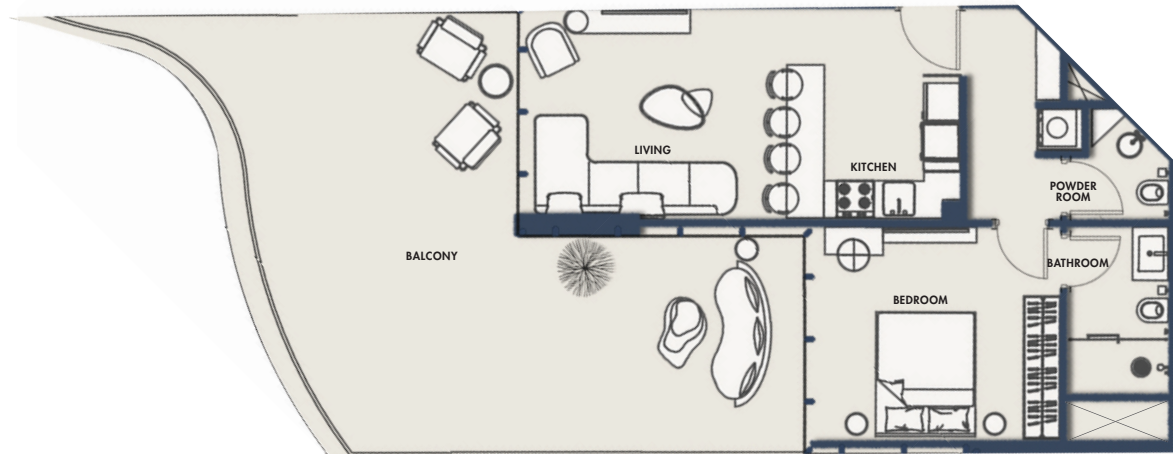


## FLOORS

1ST

## SUITE NO.

E103



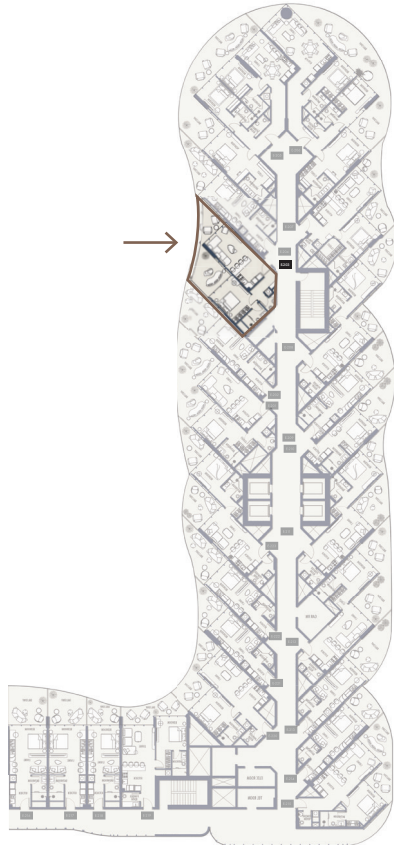
## 1BR-TYPE 6B

**810.09 SQFT**

Suite Area 580.61 Sqft

Balcony Area 229.49 Sqft

1 Parking



## FLOORS

2nd, 3rd, 4th, 5th, 6th, 7th, 8th,  
9th, 10th, 11th, 12th, 13th, 14th

## SUITE NO.

E203, E303, E403, E503, E603  
E703, E803, E903, E1003,  
E1103, E1203, E1303, E1403



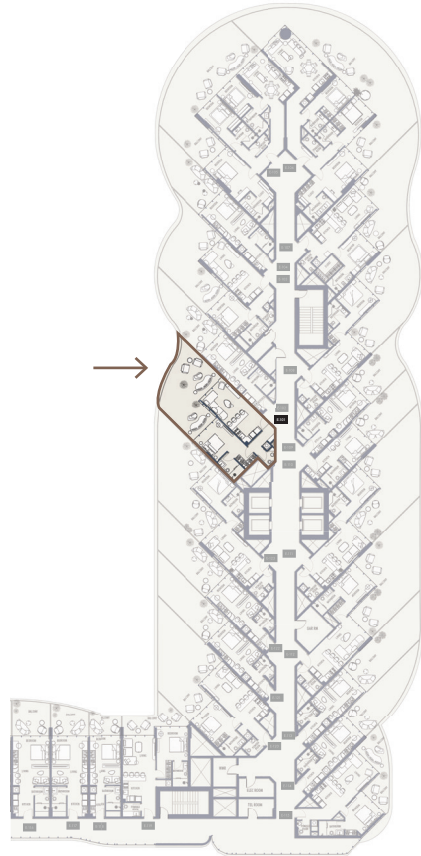
## 1BR-TYPE 7A

*1061.64* SQFT

Suite Area 618.82 Sqft

Balcony Area 442.83 Sqft

1 Parking

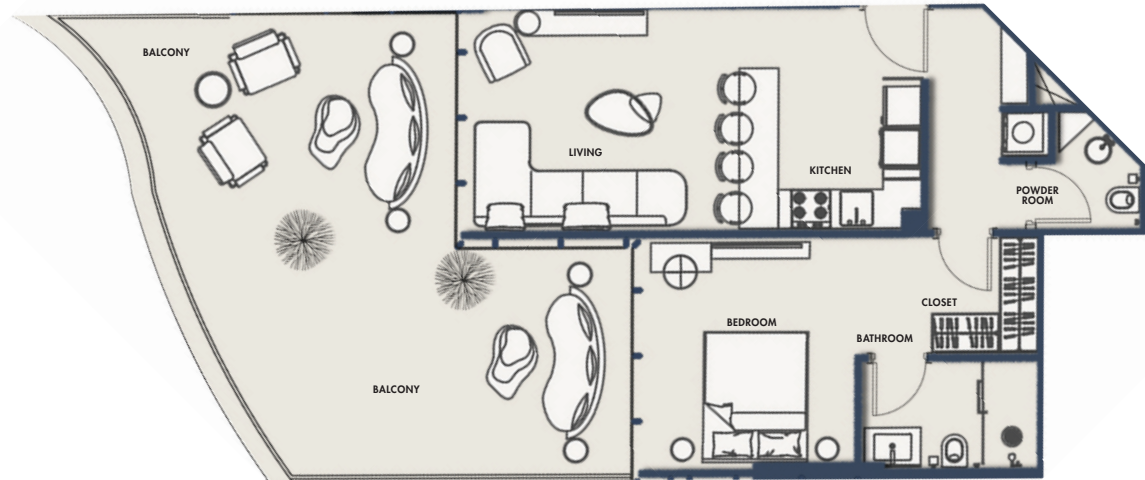


## FLOORS

1ST

## SUITE NO.

E101



## 1BR-TYPE 7B

*968.11* SQFT

Suite Area 614.62 Sqft

Balcony Area 353.49 Sqft

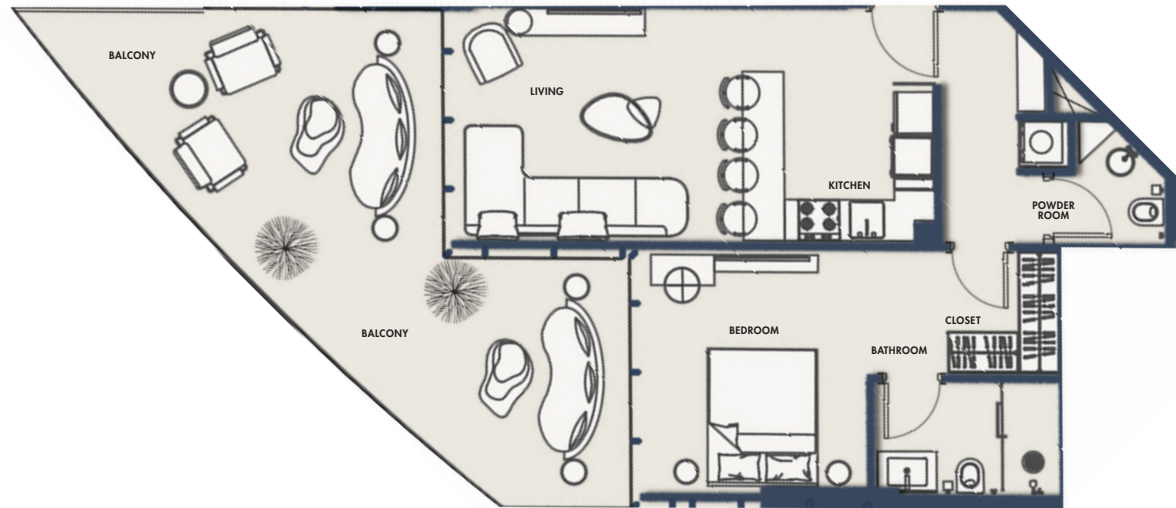
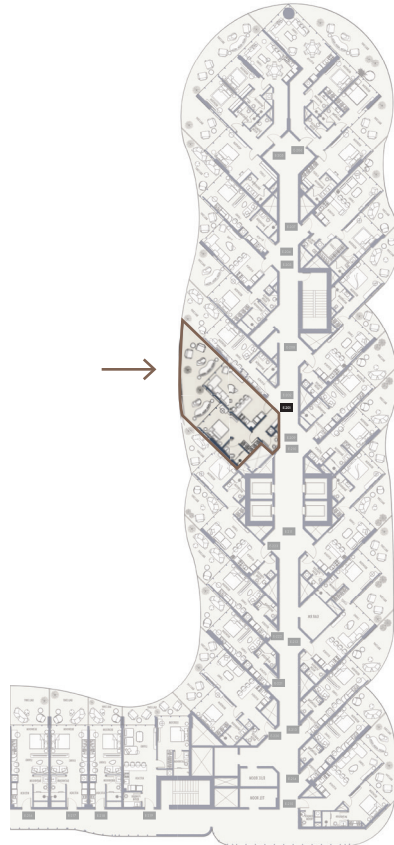
1 Parking

## FLOORS

2nd, 3rd, 4th, 5th, 6th, 7th, 8th,  
9th, 10th, 11th, 12th, 13th, 14th

## SUITE NO.

E201, E301, E401, E501, E601  
E701, E801, E901, E1001,  
E1101, E1201, E1301, E1401



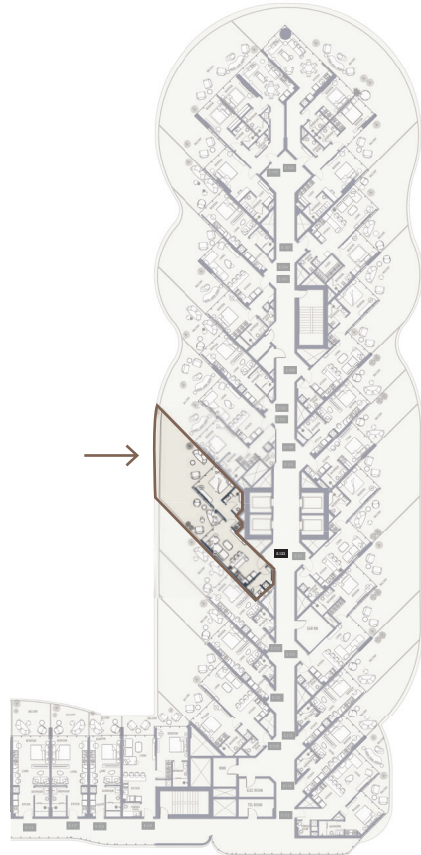
## 1BR-TYPE 8A

*1161.43* SQFT

Suite Area 566.18 Sqft

Balcony Area 595.24 Sqft

1 Parking



## FLOORS

1ST

## SUITE NO.

E123



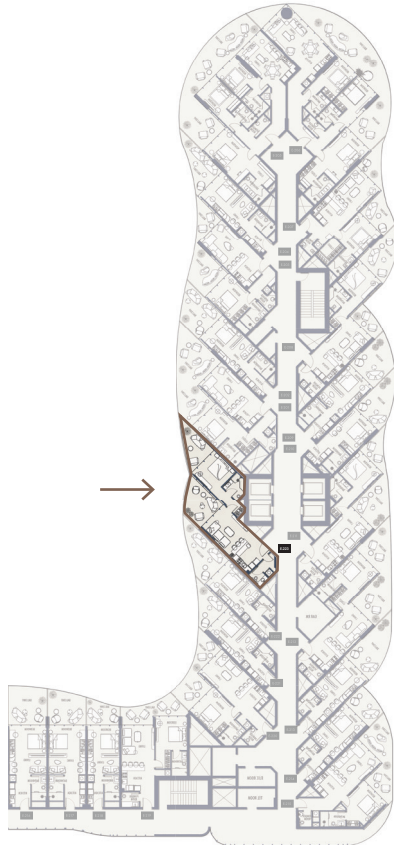
## 1BR-TYPE 8B

# 836.89 SQFT

Suite Area 572.64 Sqft

Balcony Area 264.25 Sqft

1 Parking

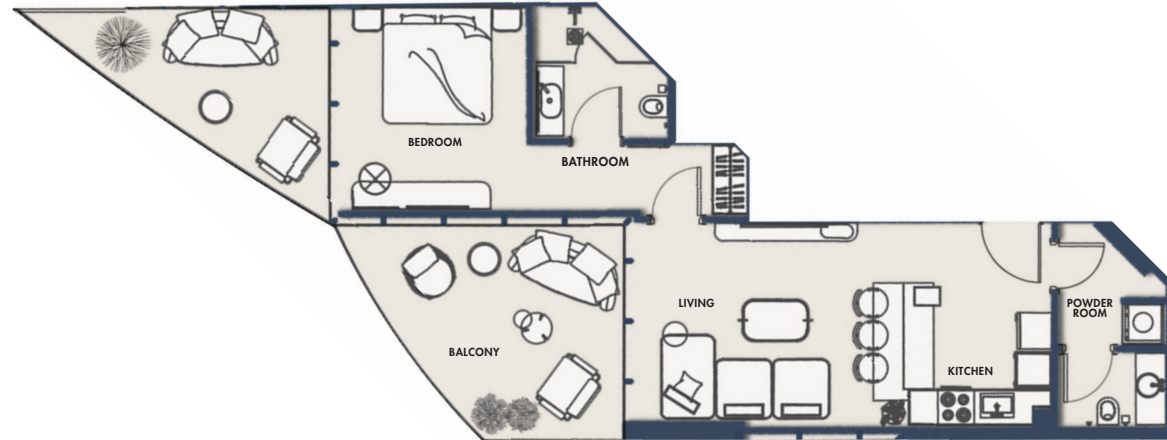


## FLOORS

2nd, 3rd, 4th, 5th, 6th, 7th, 8th,  
9th, 10th, 11th, 12th, 13th, 14th

## SUITE NO.

E223, E323, E420, E520, E620  
E723, E823, E923, E1023,  
E1123, E1220, E1320, E1420



## 1BR-TYPE 9A

*1176.06* SQFT

Suite Area 585.45 Sqft

Balcony Area 590.62 Sqft

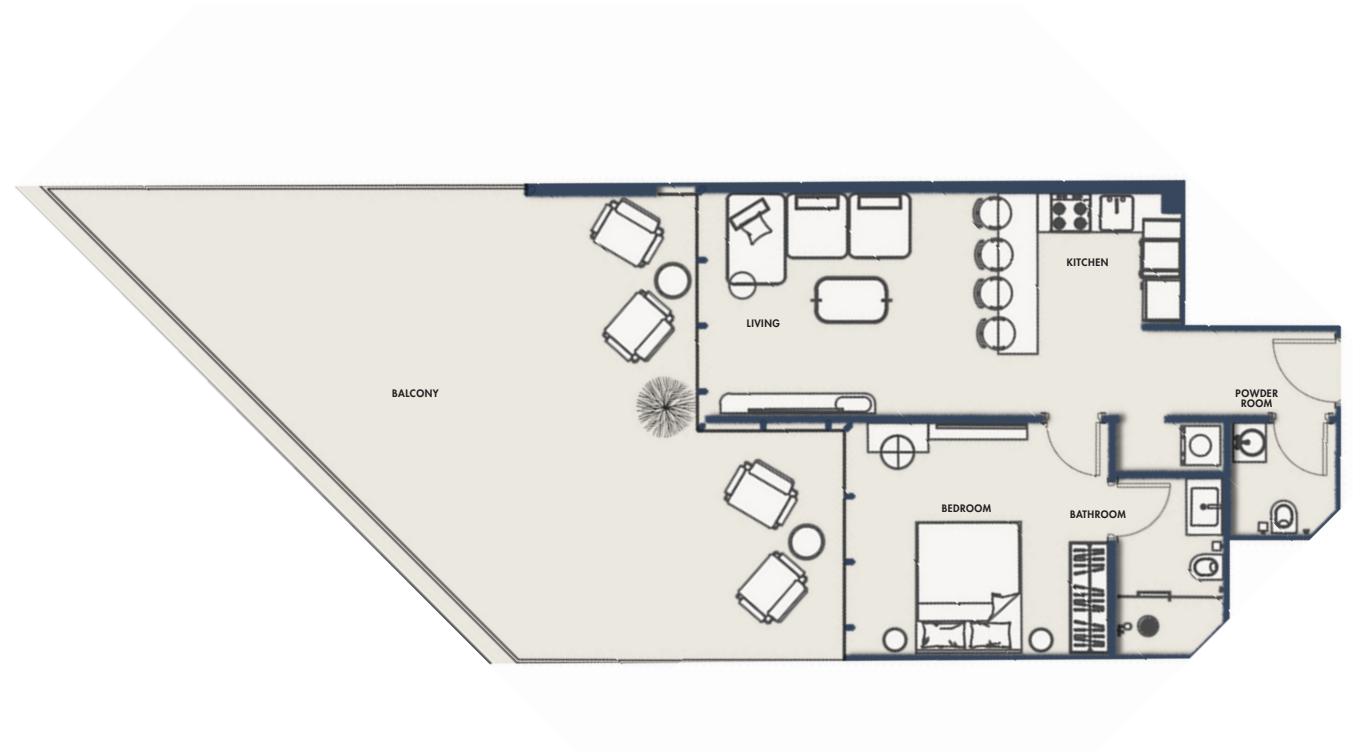
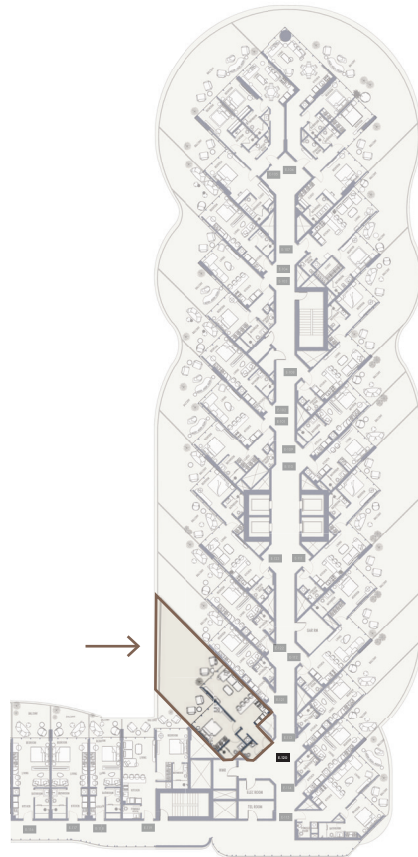
1 Parking

## FLOORS

1ST

## SUITE NO.

E120



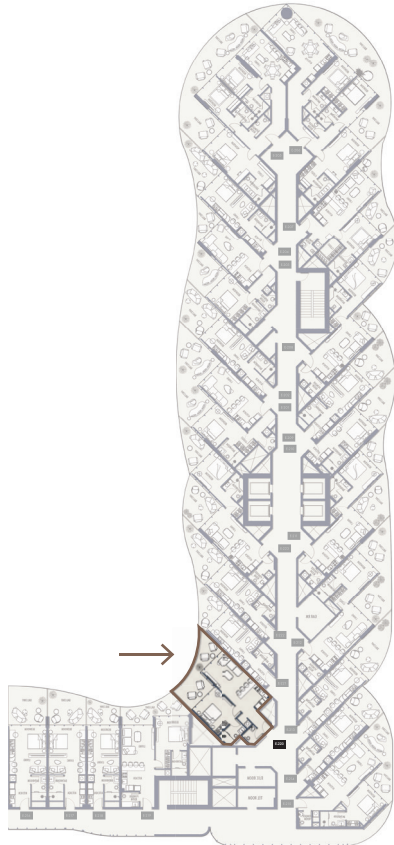
## 1BR-TYPE 9B

# 787.16 SQFT

Suite Area 585.23 Sqft

Balcony Area 201.93 Sqft

1 Parking

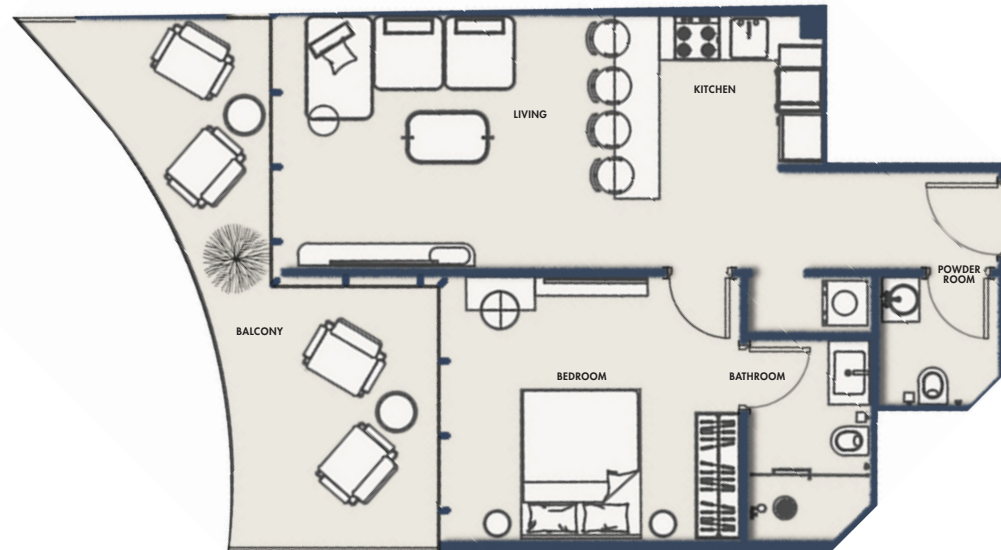


## FLOORS

2nd, 3rd, 4th, 5th, 6th, 7th, 8th,  
9th, 10th, 11th, 12th, 13th, 14th

## SUITE NO.

E220, E320, E417, E517, E617  
E720, E820, E920, E1020,  
E1120, E1217, E1317, E1417



# 1BR-TYPE 10A

## 785.44 SQFT

Suite Area 614.62 Sqft

Balcony Area 170.82 Sqft

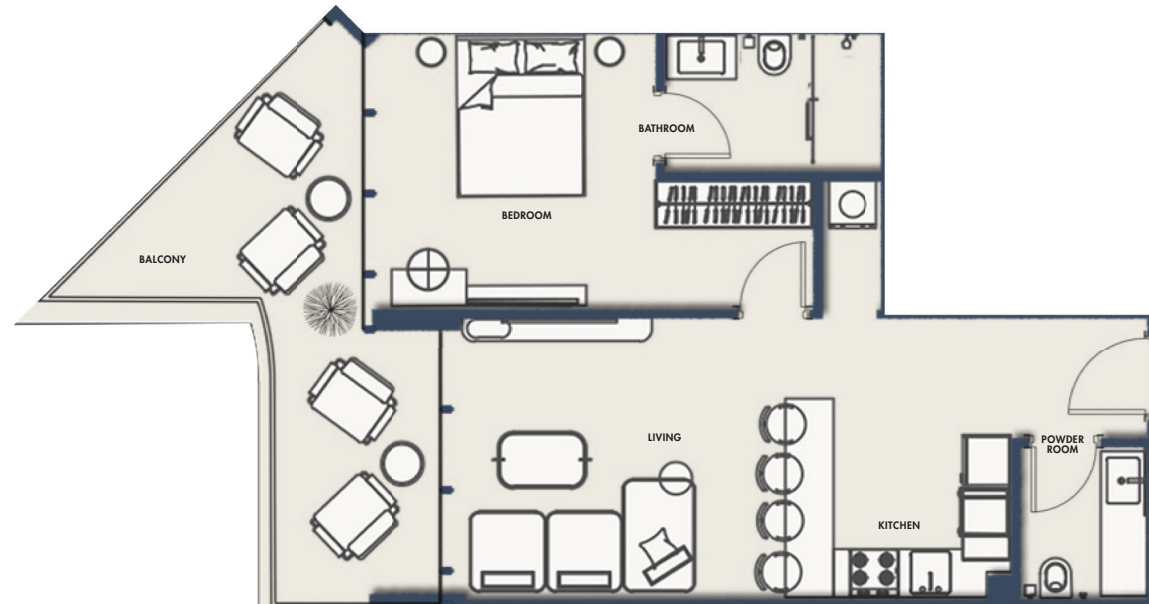
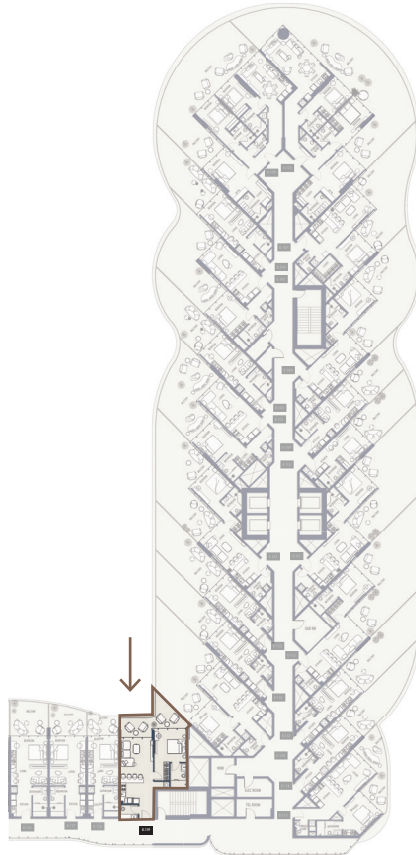
1 Parking

# FLOORS

1ST

# SUITE NO.

E119



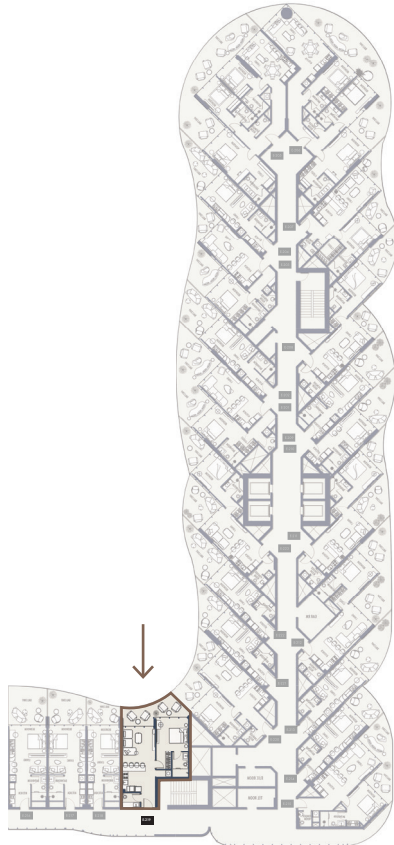
## 1BR-TYPE 10B

# 763.38 SQFT

Suite Area 615.27 Sqft

Balcony Area 148.11 Sqft

1 Parking

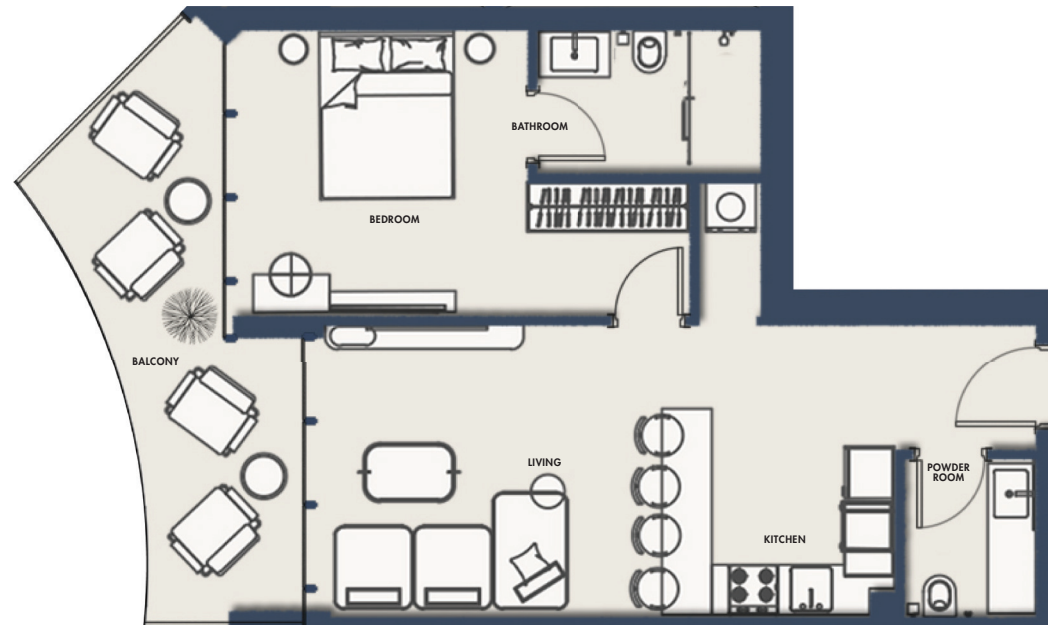


## FLOORS

2nd, 3rd, 4th, 5th, 6th, 7th, 8th,  
9th, 10th, 11th, 12th, 13th, 14th

## SUITE NO.

E219, E319, E416, E516, E616  
E719, E819, E919, E1019,  
E1119, E1216, E1316, E1416











## STUDIO-TYPE 1A

**641.64 SQFT**

Suite Area 318.72 Sqft

Balcony Area 322.92 Sqft

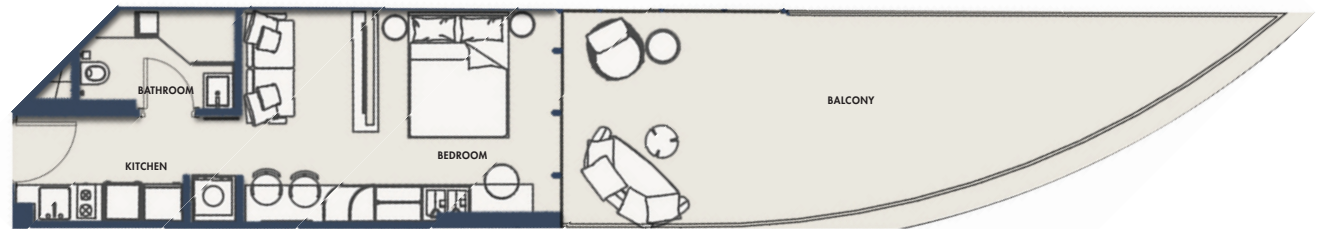
1 Parking

## FLOORS

1ST

## SUITE NO.

E114



# STUDIO-TYPE 1B

## 420.65 SQFT

Suite Area 316.57 Sqft

Balcony Area 104.09 Sqft

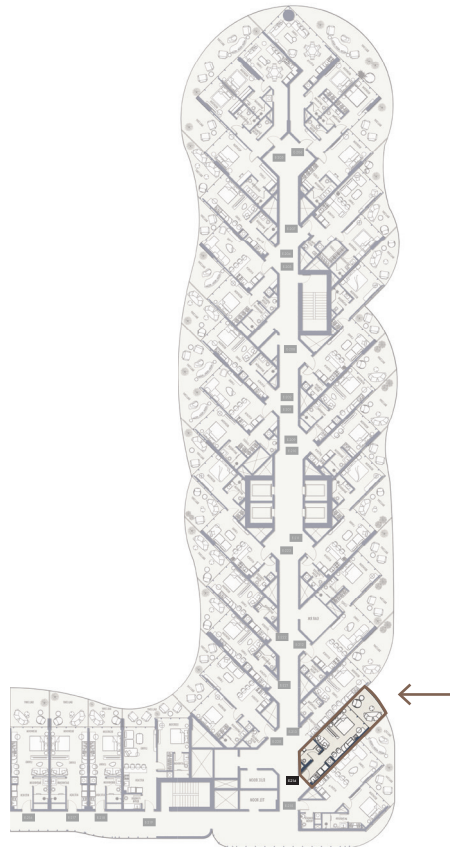
1 Parking

# FLOORS

2nd, 3rd, 4th, 5th, 6th, 7th, 8th,  
9th, 10th, 11th, 12th, 13th, 14th

# SUITE NO.

E214, E314, E414, E514, E614  
E714, E814, E914, E1014,  
E1114, E1214, E1314, E1414



## STUDIO-TYPE 2A

# 719.78 SQFT

Suite Area 317.64 Sqft

Balcony Area 402.14 Sqft

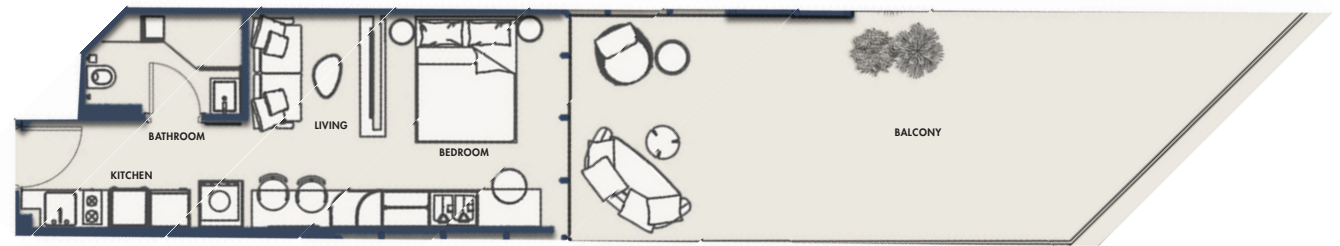
1 Parking

## FLOORS

1ST

## SUITE NO.

E113



## STUDIO-TYPE 2B

**511.5 SQFT**

Suite Area 317.64 Sqft

Balcony Area 193.86 Sqft

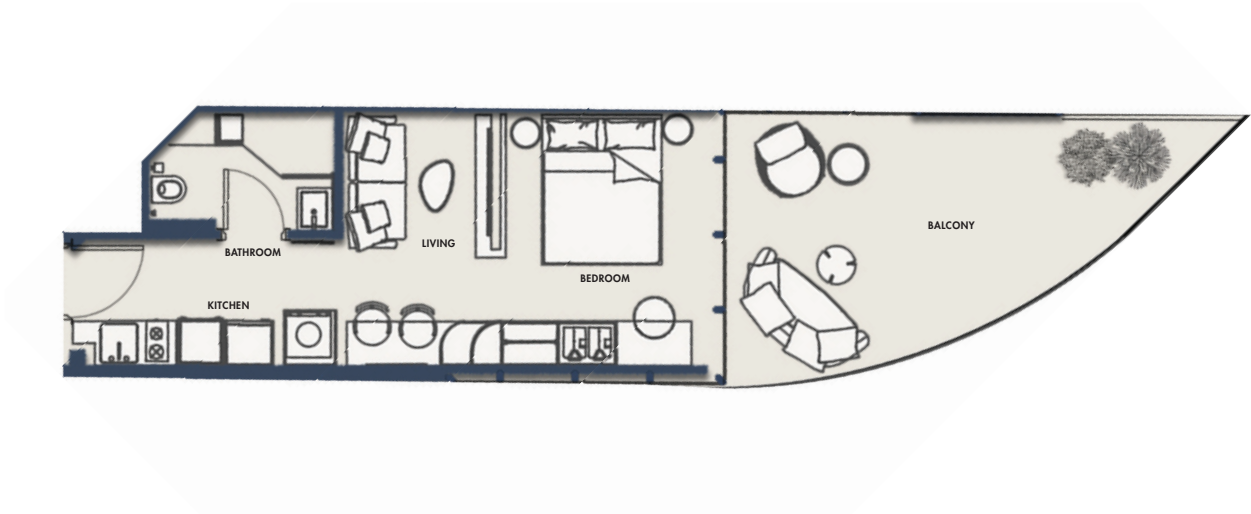
1 Parking

## FLOORS

2nd, 3rd, 4th, 5th, 6th, 7th, 8th,  
9th, 10th, 11th, 12th, 13th, 14th

## SUITE NO.

E213, E313, E413, E513, E613  
E713, E813, E913, E1013,  
E1113, E1213, E1313, E1413



**STUDIO-TYPE 3A**

**560.48 SQFT**

Suite Area 278.35 Sqft

Balcony Area 282.12 Sqft

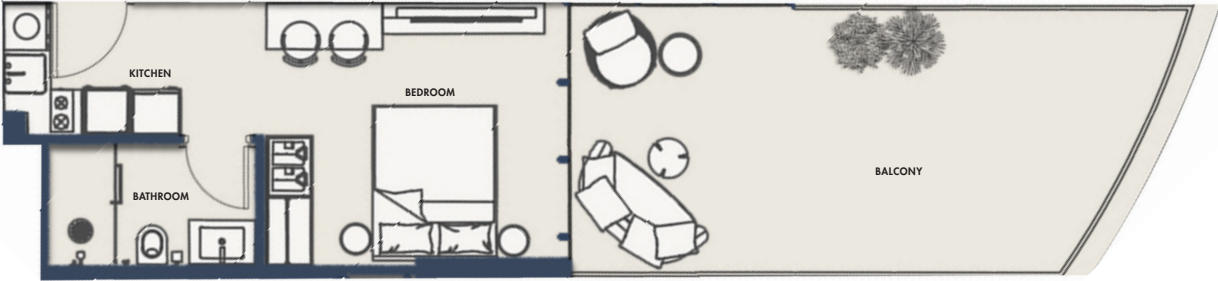
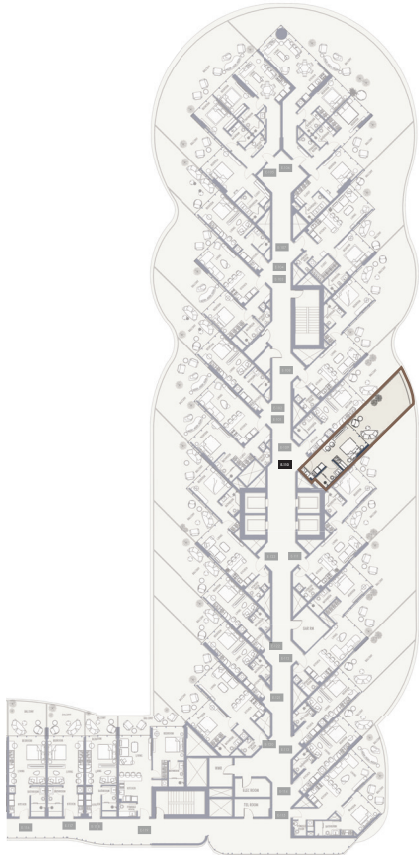
1 Parking

**FLOORS**

1ST

**SUITE NO.**

E110



## STUDIO-TYPE 3B

# 438.95 SQFT

Suite Area 278.25 Sqft

Balcony Area 160.71 Sqft

1 Parking

## FLOORS

2nd, 3rd, 4th, 5th, 6th, 7th, 8th,  
9th, 10th, 11th, 12th, 13th, 14th

## SUITE NO.

E210, E310, E410, E510, E610  
E710, E810, E910, E1010,  
E1110, E1210, E1310, E1410



**STUDIO-TYPE 4A**

**556.49 SQFT**

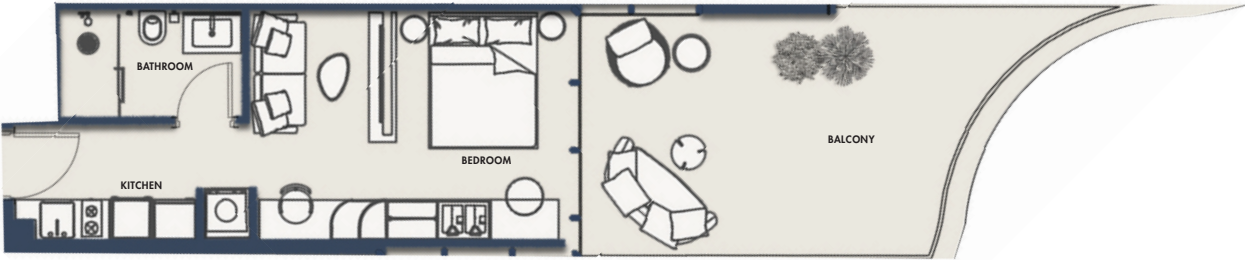
Suite Area 311.62 Sqft  
Balcony Area 244.88 Sqft  
1 Parking

**FLOORS**

1ST

**SUITE NO.**

E109



## STUDIO-TYPE 4B

**482.01** SQFT

Suite Area 311.83 Sqft

Balcony Area 170.18 Sqft

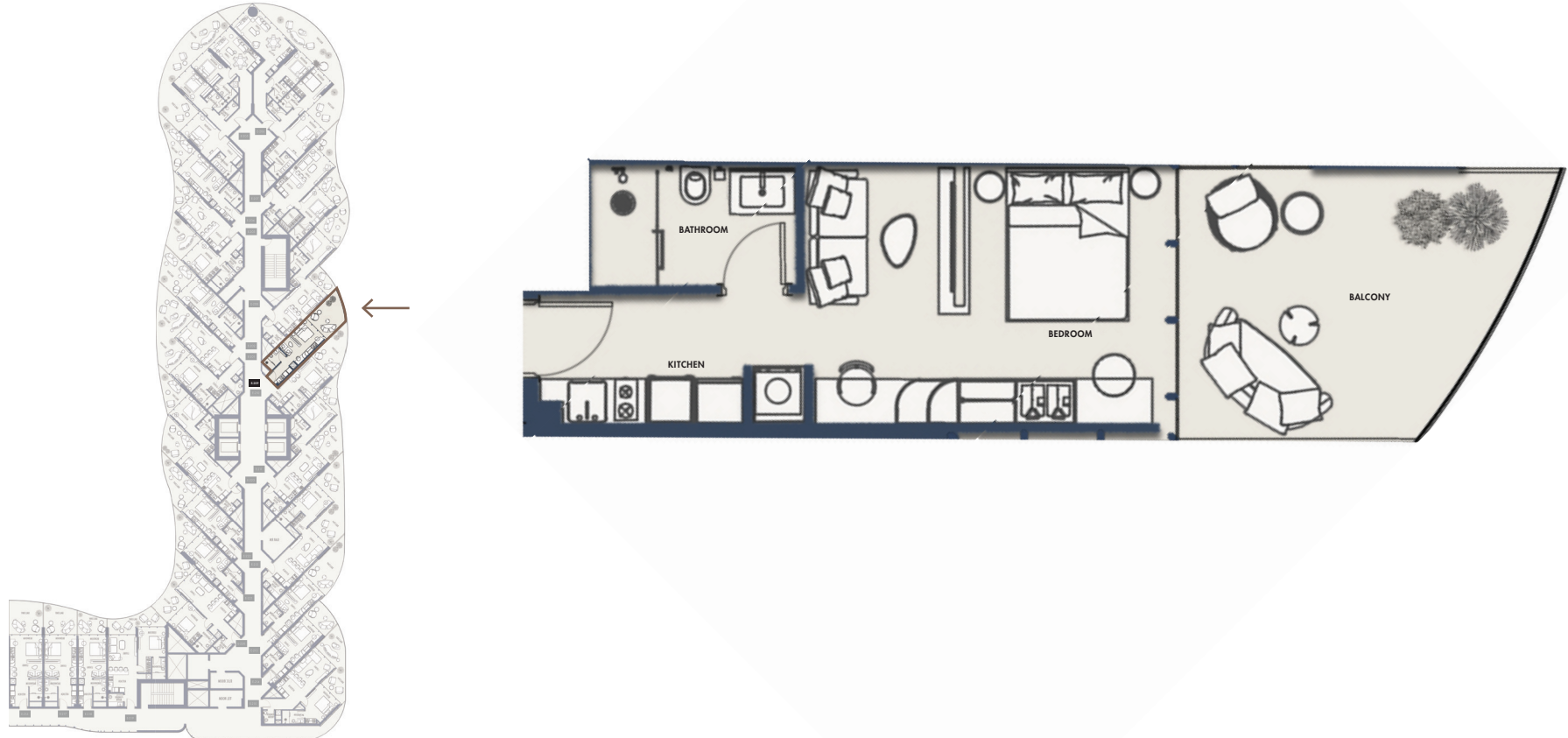
1 Parking

## FLOORS

2nd, 3rd, 4th, 5th, 6th, 7th, 8th,  
9th, 10th, 11th, 12th, 13th, 14th

## SUITE NO.

E209, E309, E409, E509, E609  
E709, E809, E909, E1009,  
E1109, E1209, E1309, E1409



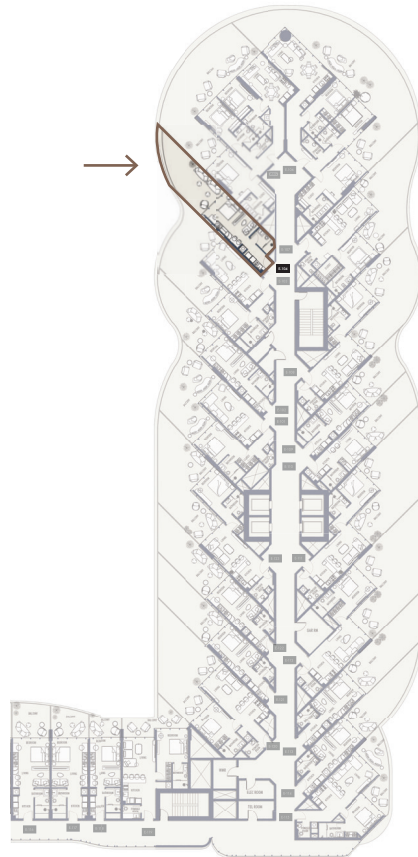
## STUDIO-TYPE 5A

**659.07 SQFT**

Suite Area 339.82 Sqft

Balcony Area 319.26 Sqft

1 Parking

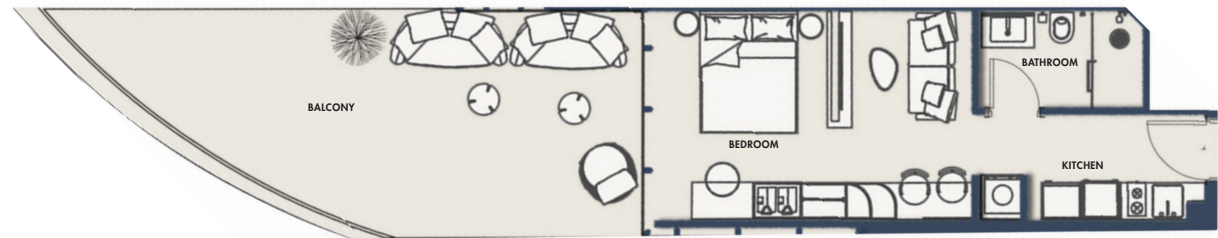


## FLOORS

1ST

## SUITE NO.

E104



## STUDIO-TYPE 5B

# 485.78 SQFT

Suite Area 345.95 Sqft

Balcony Area 139.82 Sqft

1 Parking

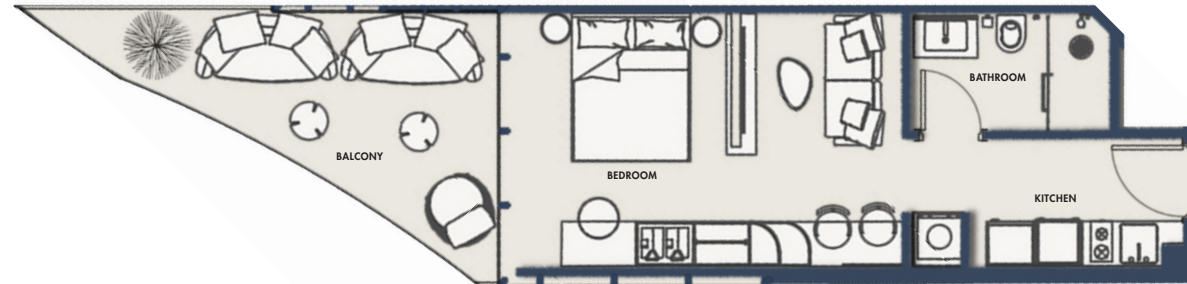


## FLOORS

2nd, 3rd, 4th, 5th, 6th, 7th, 8th,  
9th, 10th, 11th, 12th, 13th, 14th

## SUITE NO.

E204, E304, E404, E504, E604  
E704, E804, E904, E1004,  
E1104, E1204, E1304, E1404



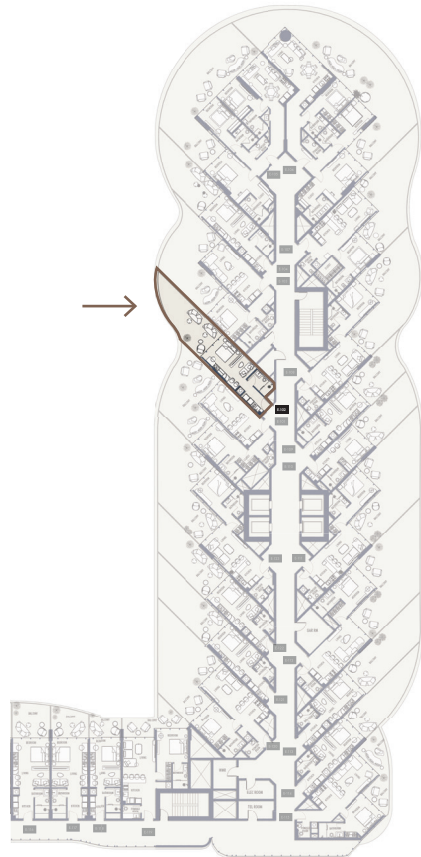
## STUDIO-TYPE 6A

**630.44 SQFT**

Suite Area 335.19 Sqft

Balcony Area 295.25 Sqft

1 Parking

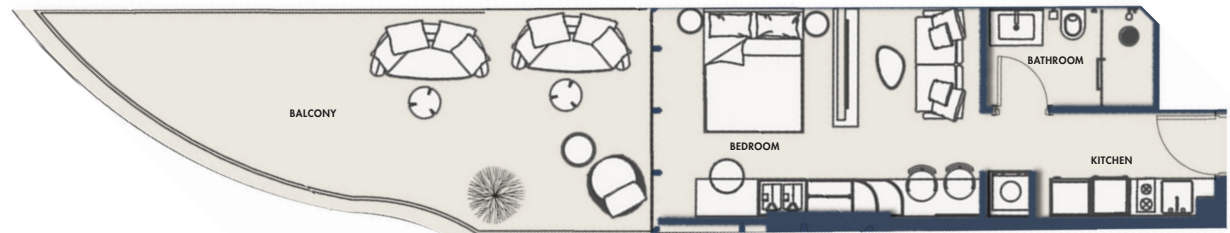


## FLOORS

1ST

## SUITE NO.

E102



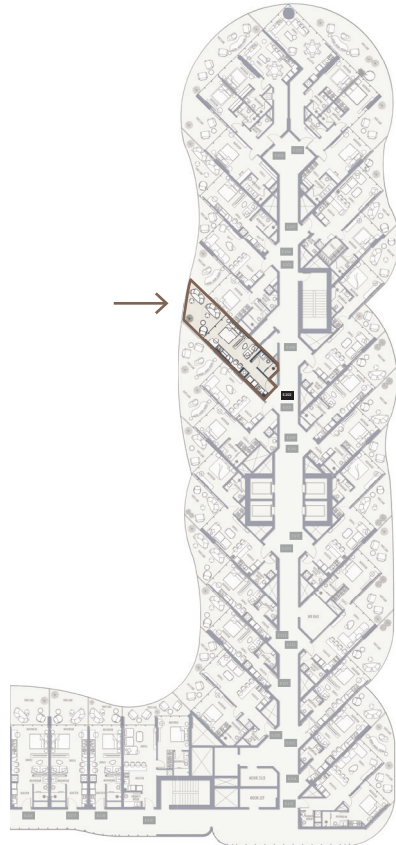
## STUDIO-TYPE 6B

**500.95 SQFT**

Suite Area 334.87 Sqft

Balcony Area 166.09 Sqft

1 Parking

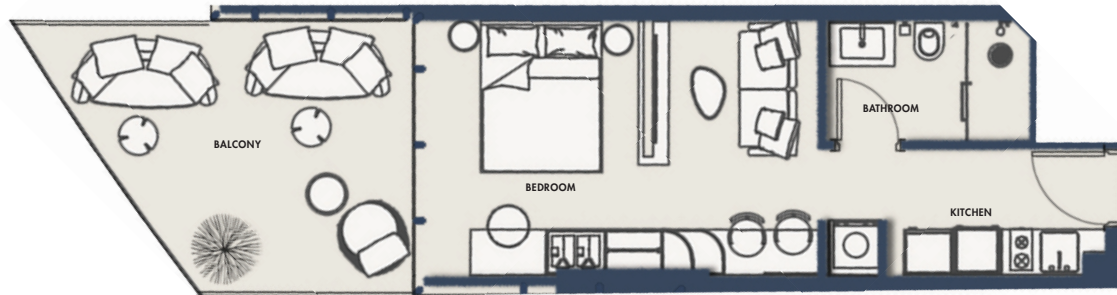


## FLOORS

2nd, 3rd, 4th, 5th, 6th, 7th, 8th,  
9th, 10th, 11th, 12th, 13th, 14th

## SUITE NO.

E202, E302, E402, E502, E602  
E702, E802, E902, E1002,  
E1102, E1202, E1302, E1402



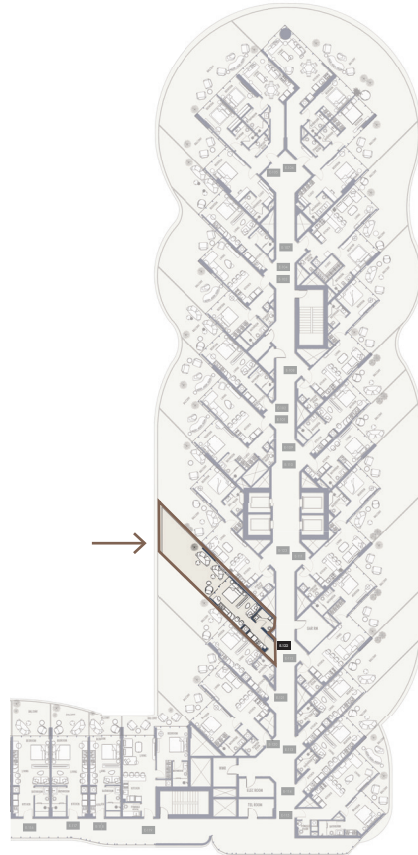
## STUDIO-TYPE 7A

**690.4 SQFT**

Suite Area 318.07 Sqft

Balcony Area 372.32 Sqft

1 Parking

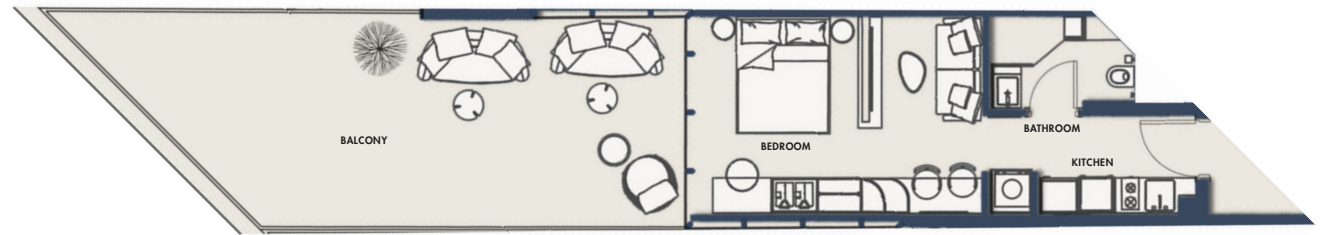


## FLOORS

1ST

## SUITE NO.

E122



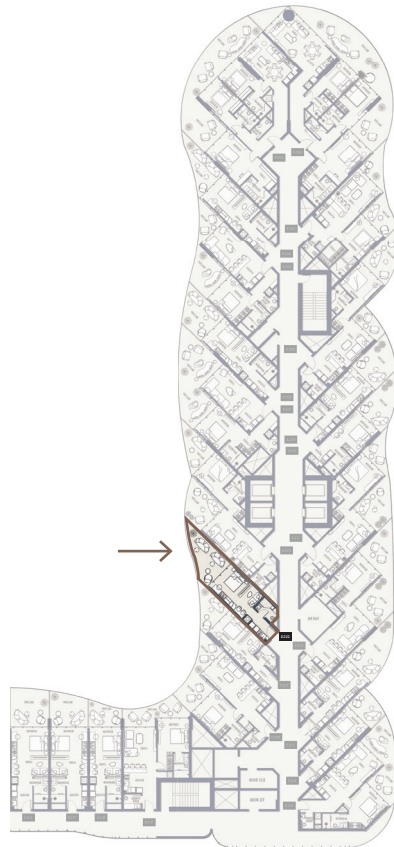
## STUDIO-TYPE 7B

**491.91 SQFT**

Suite Area 317.64 Sqft

Balcony Area 174.27 Sqft

1 Parking



## FLOORS

2nd, 3rd, 4th, 5th, 6th, 7th, 8th,  
9th, 10th, 11th, 12th, 13th, 14th

## SUITE NO.

E222, E322, E419, E519, E619  
E722, E822, E922, E1022,  
E1122, E1219, E1319, E1419



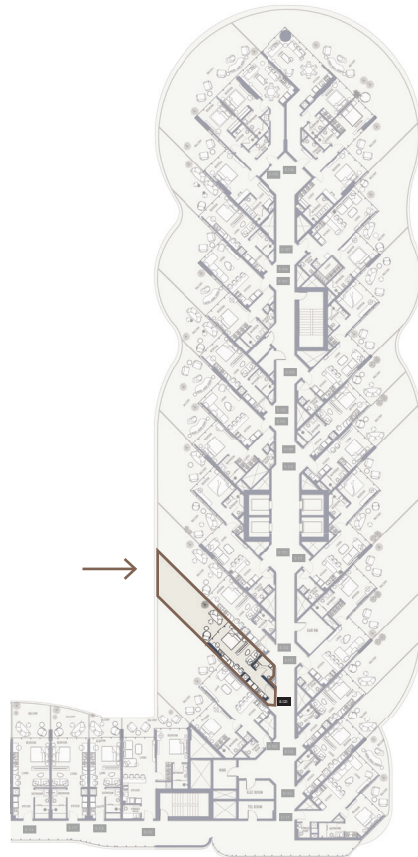
## STUDIO-TYPE 8A

**664.46 SQFT**

Suite Area 317.54 Sqft

Balcony Area 346.92 Sqft

1 Parking

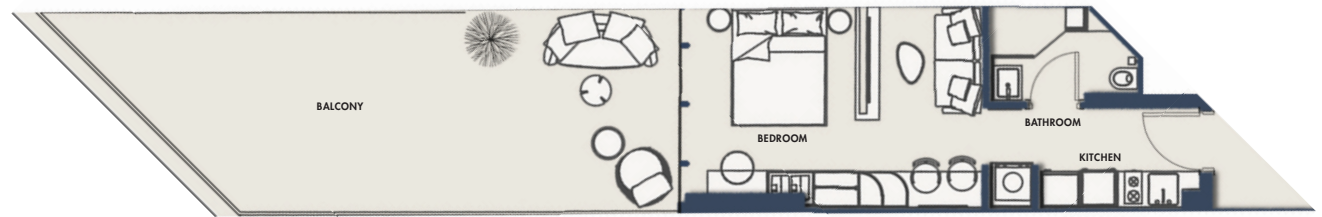


## FLOORS

1ST

## SUITE NO.

E121



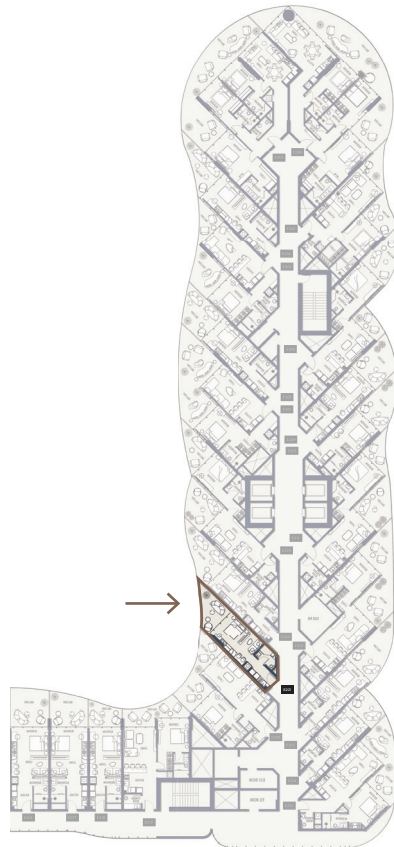
## STUDIO-TYPE 8B

**427.22 SQFT**

Suite Area 314.2 Sqft

Balcony Area 113.02 Sqft

1 Parking



## FLOORS

2nd, 3rd, 4th, 5th, 6th, 7th, 8th,  
9th, 10th, 11th, 12th, 13th, 14th

## SUITE NO.

E221, E321, E418, E518, E618  
E721, E821, E921, E1021,  
E1121, E1218, E1318, E1418



## STUDIO-TYPE 9A

**414.73 SQFT**

Suite Area 328.62 Sqft

Balcony Area 86.11 Sqft

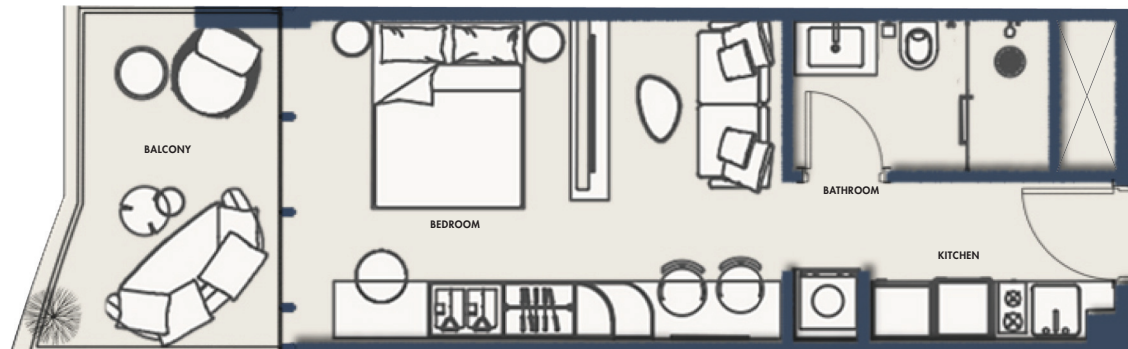
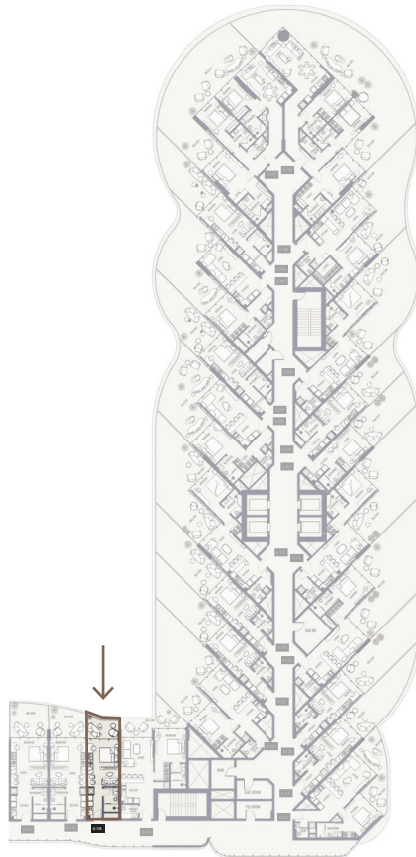
1 Parking

## FLOORS

1ST

## SUITE NO.

E118



# STUDIO-TYPE 9B

## 420.87 SQFT

Suite Area 328.73 Sqft

Balcony Area 92.14 Sqft

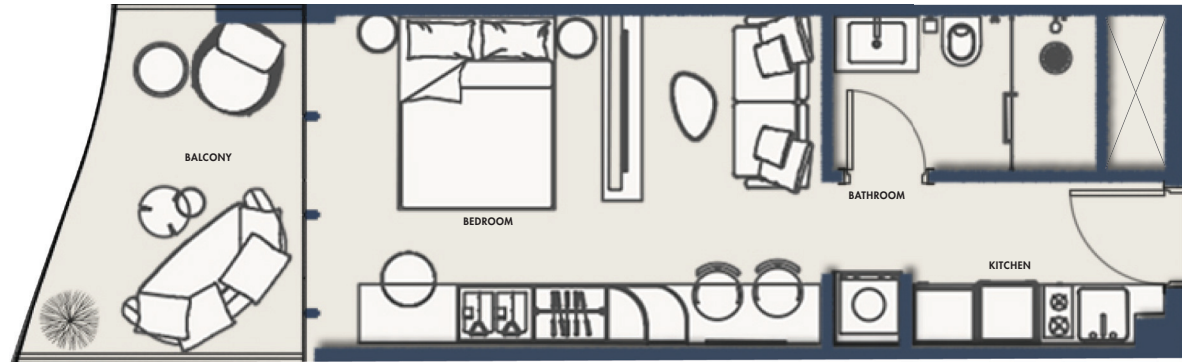
1 Parking

# FLOORS

2nd, 3rd, 7th, 8th,  
9th, 10th, 11th

# SUITE NO.

E218, E318, E718, E818, E918,  
E1018, E1118



## STUDIO-TYPE 10A

**518.39** SQFT

Suite Area 378.89 Sqft

Balcony Area 139.50 Sqft

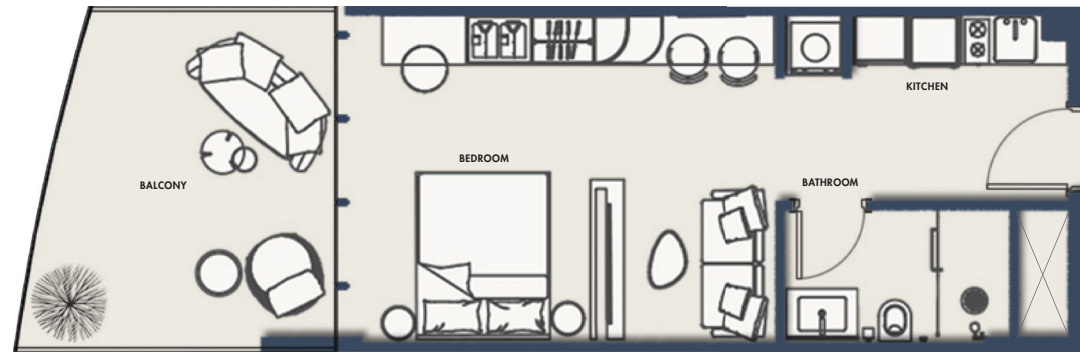
1 Parking

## FLOORS

1ST

## SUITE NO.

E117



# STUDIO-TYPE 10B

## 532.06 SQFT

Suite Area 378.89 Sqft

Balcony Area 153.17 Sqft

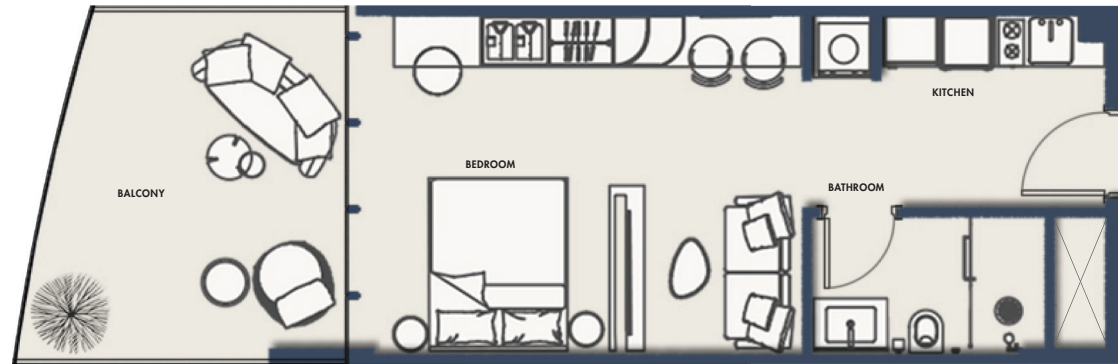
1 Parking

# FLOORS

2nd, 3rd, 7th, 8th,  
9th, 10th, 11th

# SUITE NO.

E217, E317, E717, E817, E917,  
E1017, E1117



# STUDIO-TYPE 11A

## 552.08 SQFT

Suite Area 383.41 Sqft

Balcony Area 168.67 Sqft

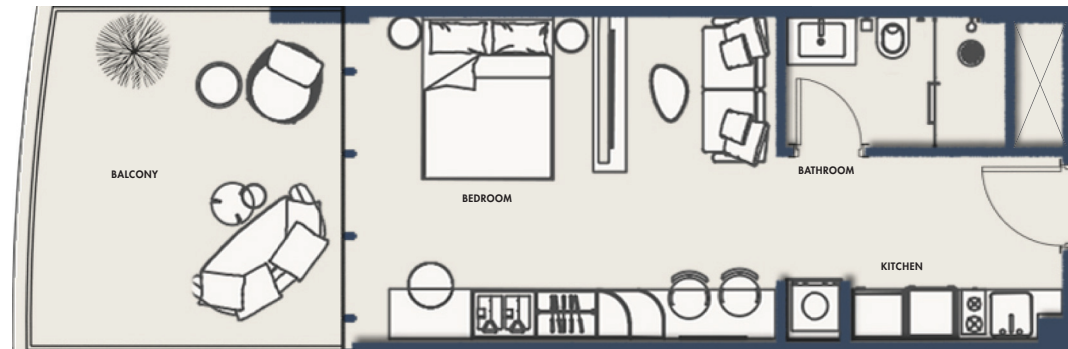
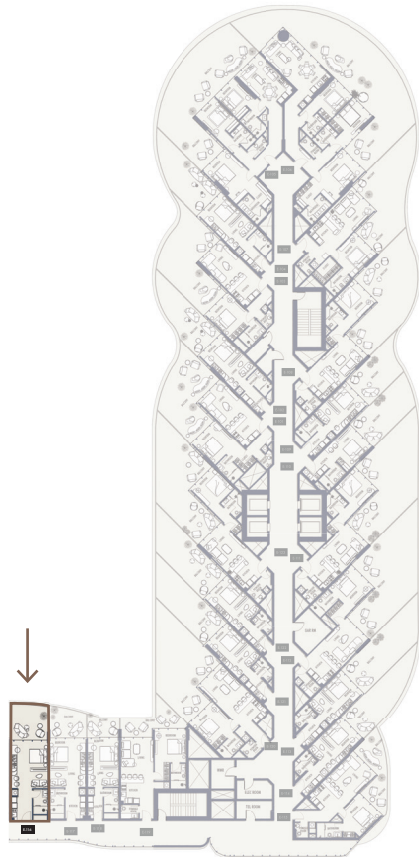
1 Parking

# FLOORS

1ST

# SUITE NO.

E116



## STUDIO-TYPE 11B

**565.64 SQFT**

Suite Area 383.41 Sqft

Balcony Area 182.23 Sqft

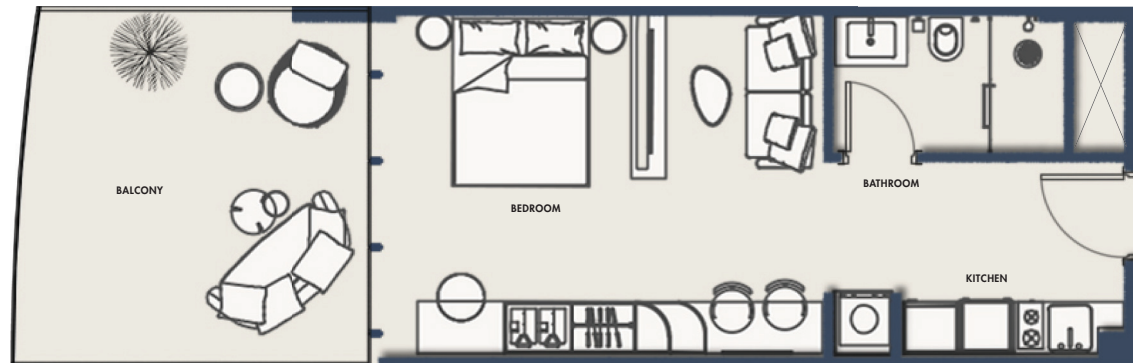
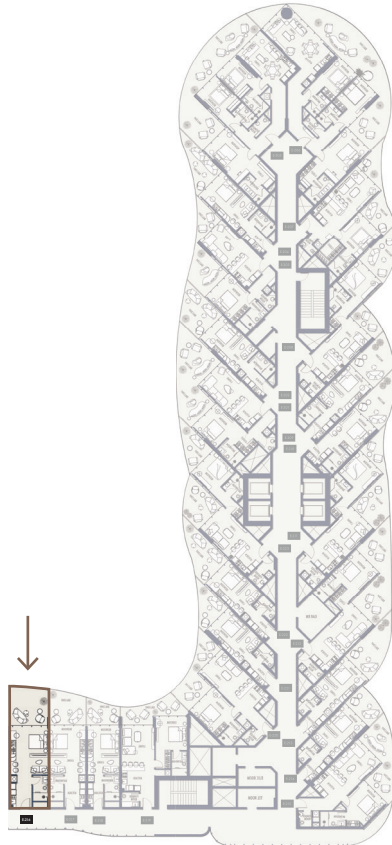
1 Parking

## FLOORS

2nd, 3rd, 7th, 8th,  
9th, 10th, 11th

## SUITE NO.

E216, E316, E716, E816, E916,  
E1016, E1116



# AMRA

INTEGRATIVE WELLNESS RESORT

## Contact Us

[citideveloper.com](http://citideveloper.com)

800 44440

Villa No 1 & 2, 625 Jumeirah Road,  
Umm Sugeim First, Dubai, UAE