



**Reportage**  *Tower*

AL MARYAH ISLAND



معلم جديد لجمال جزيرة المارية

ADDING ANOTHER LANDMARK TO THE BEAUTY OF AL MARYAH ISLAND



# FLOOR PLANS

All drawings and dimensions are approximate. Drawings are not to scale and are subject to change without notice. The developer reserves the right to make revisions. The units are measured at typical floors in the building and columns may vary in size depending on the floor level. The furnishing and accessories shown are for representation only. The availability, length and width of the balcony varies depending on which floor and which orientation the unit is located within the building. There will be slight differences in the internal areas between the same unit types depending on the shaft sizes that go through the units.

# REPORTAGE TOWER

## BASEMENT 02

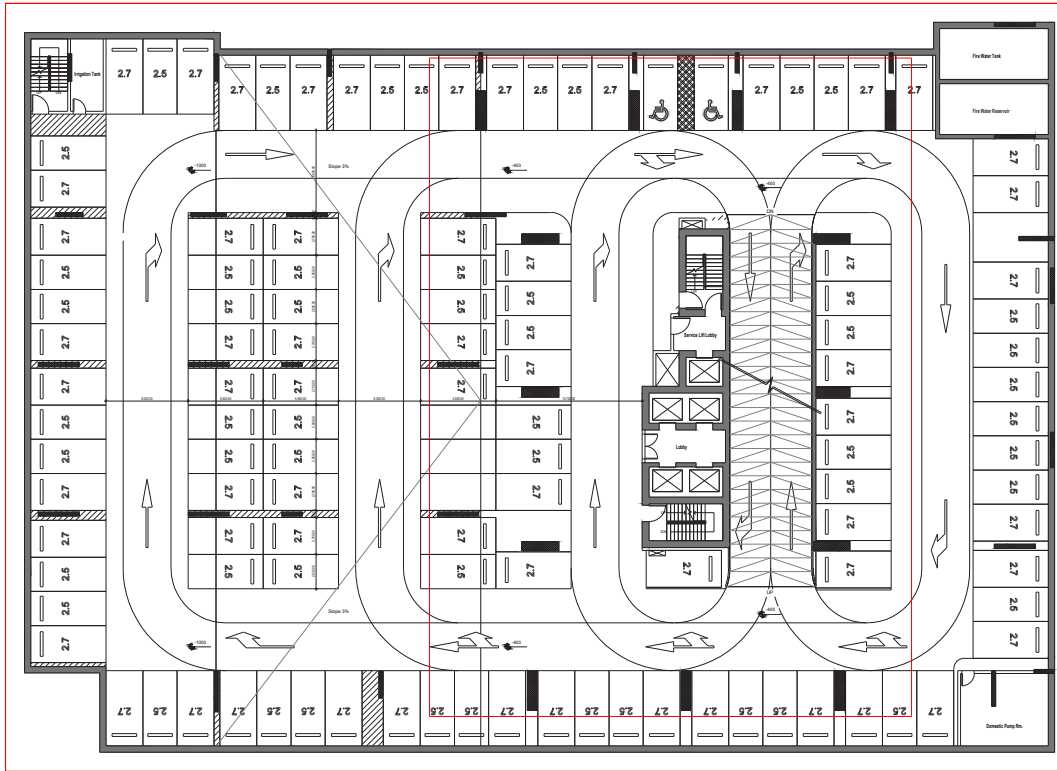
● 11B ● 1B ● 2B ● 3B ● 4B



# REPORTAGE TOWER

## BASEMENT 01

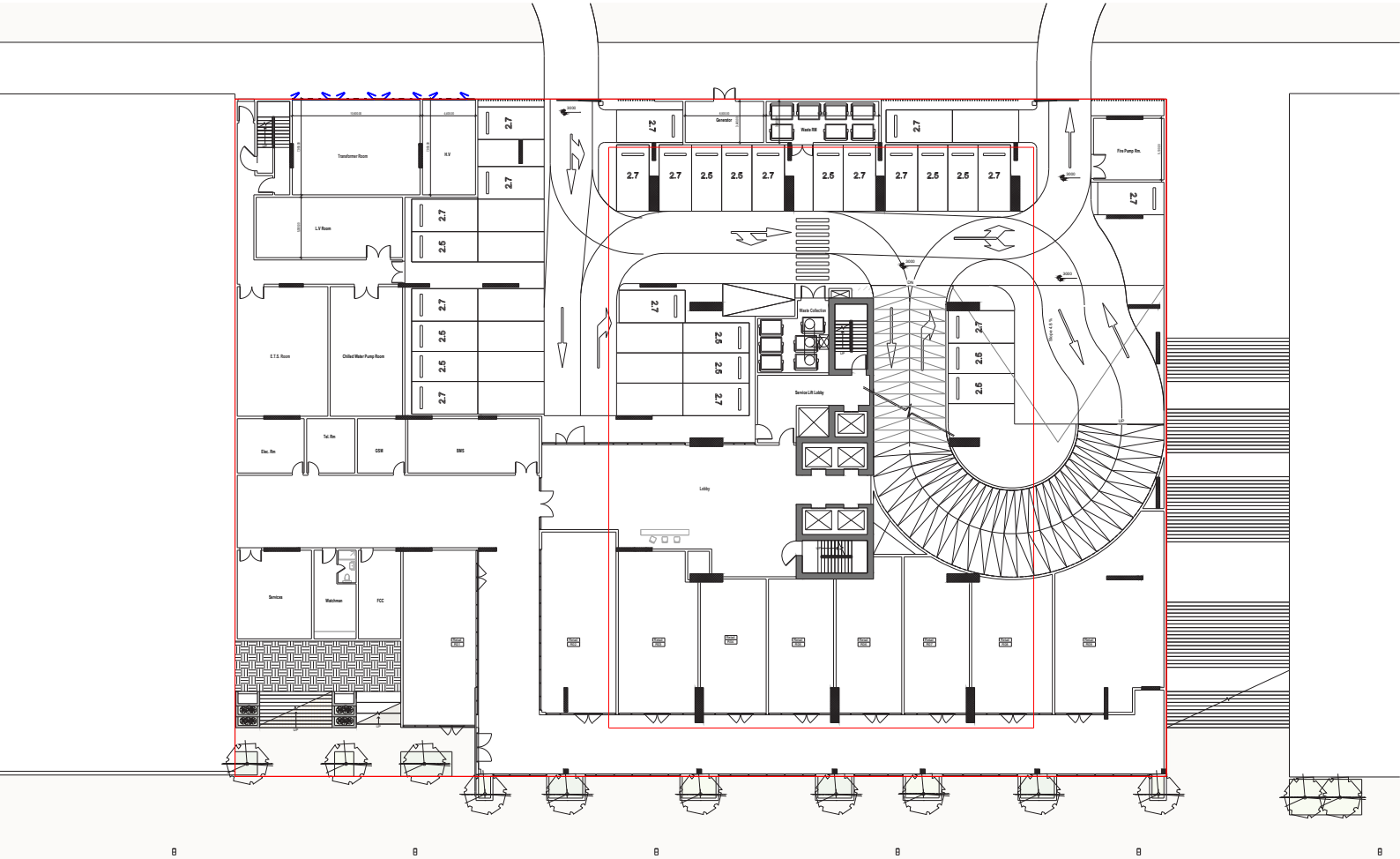
● 11B ● 1B ● 2B ● 3B ● 4B



# REPORTAGE TOWER

## LOWER GROUND FLOOR

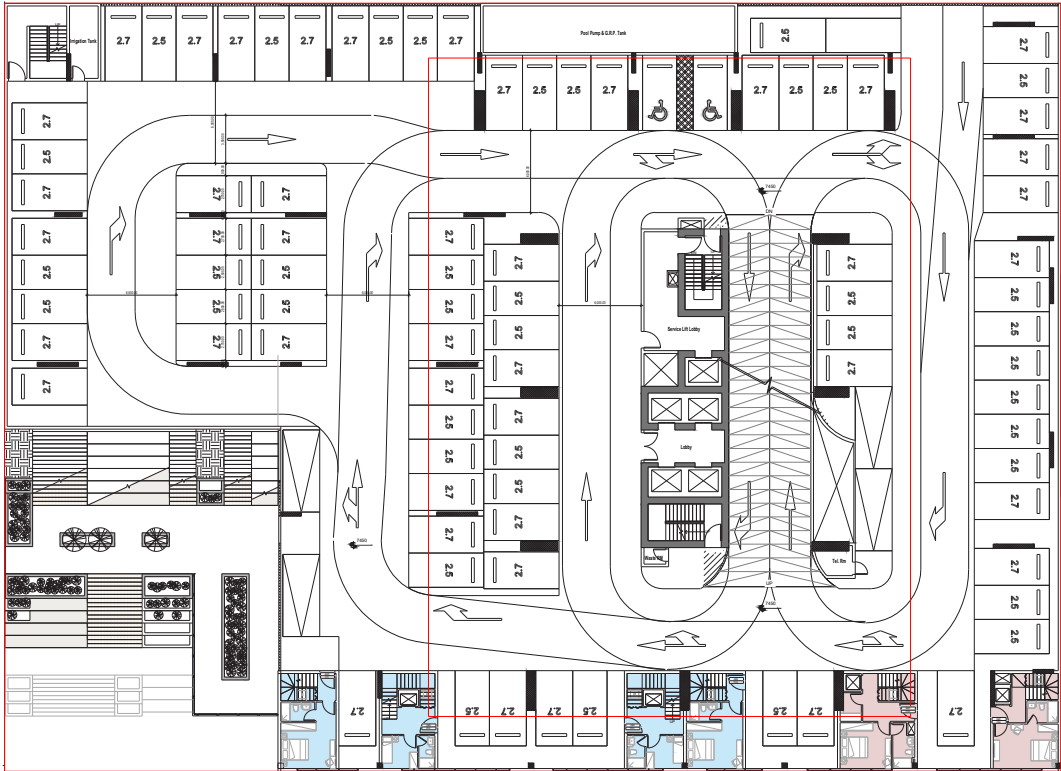
● 11B ● 1B ● 2B ● 3B ● 4B



# REPORTAGE TOWER

## LOWER PODIUM 01

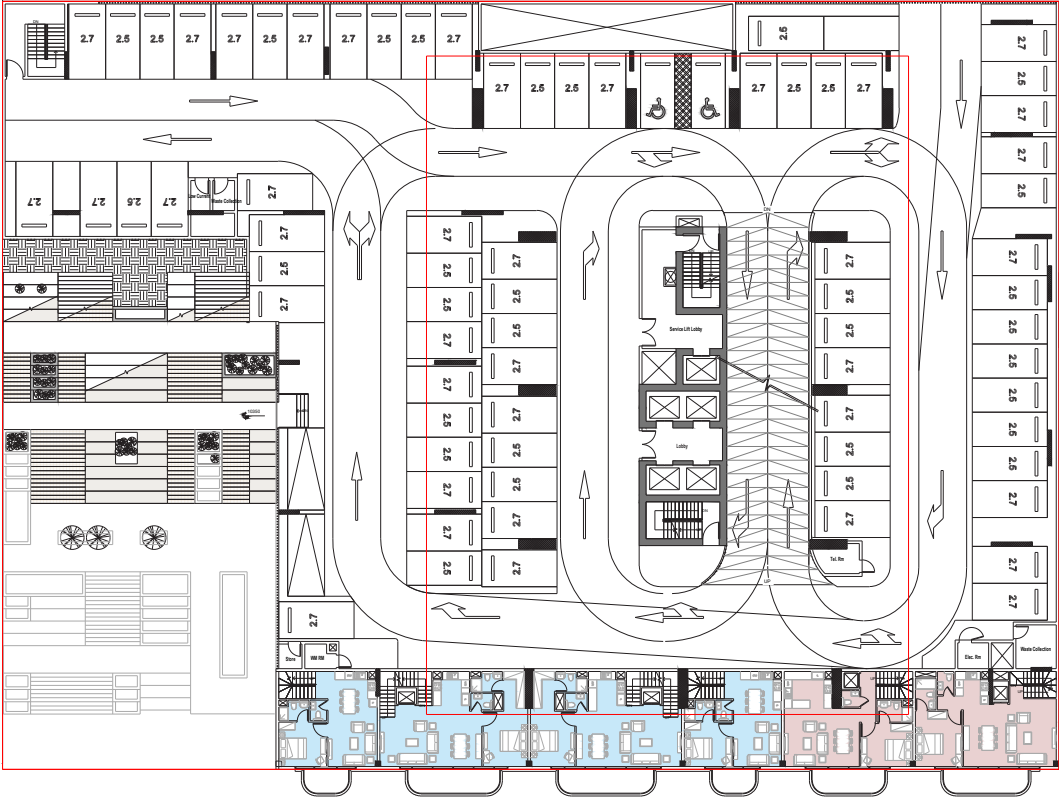
● 11B ● 1B ● 2B ● 3B ● 4B



# REPORTAGE TOWER

## LOWER PODIUM 02

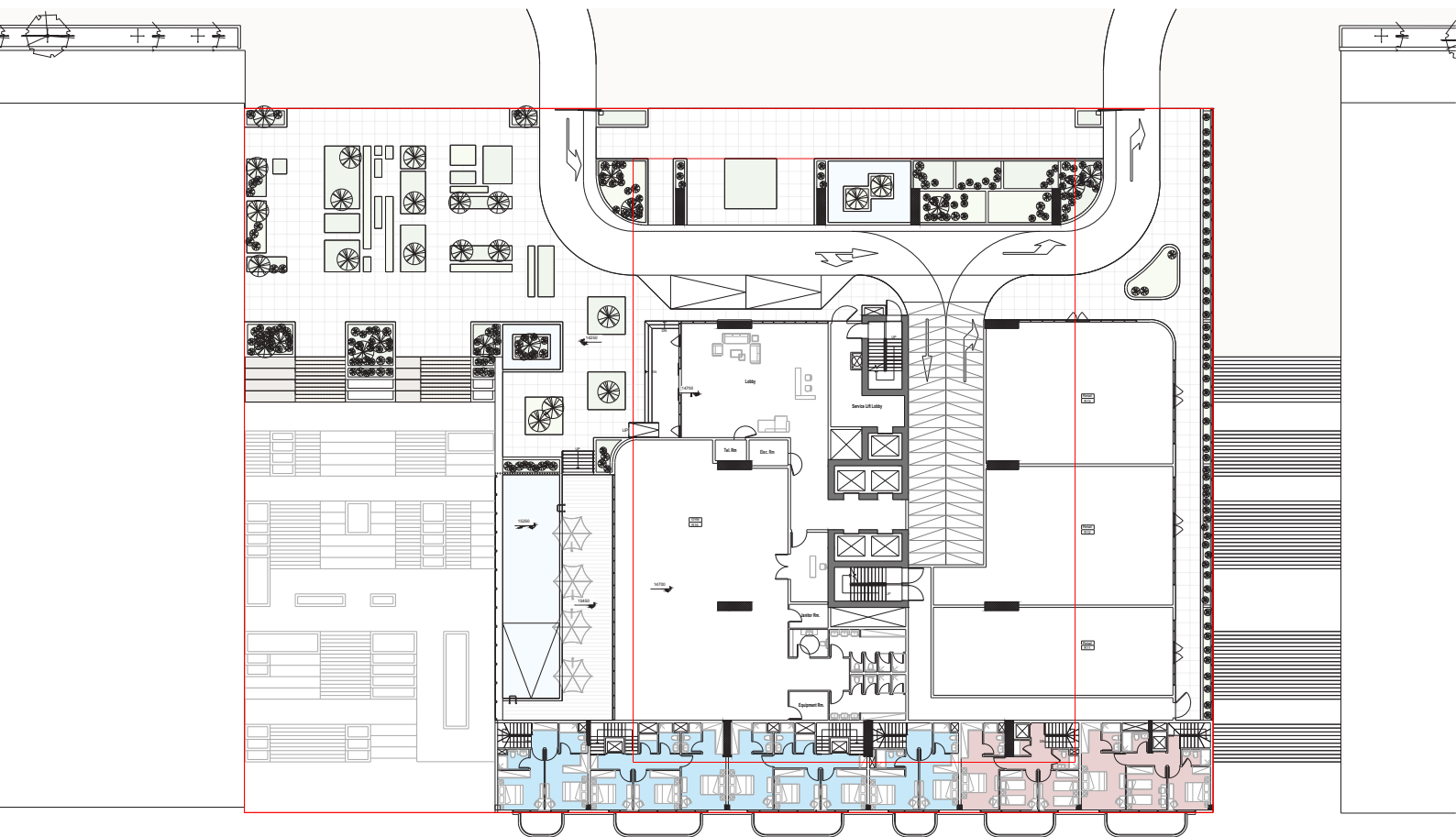
● 11B ● 1B ● 2B ● 3B ● 4B



# REPORTAGE TOWER

## UPPER PODIUM (UG)

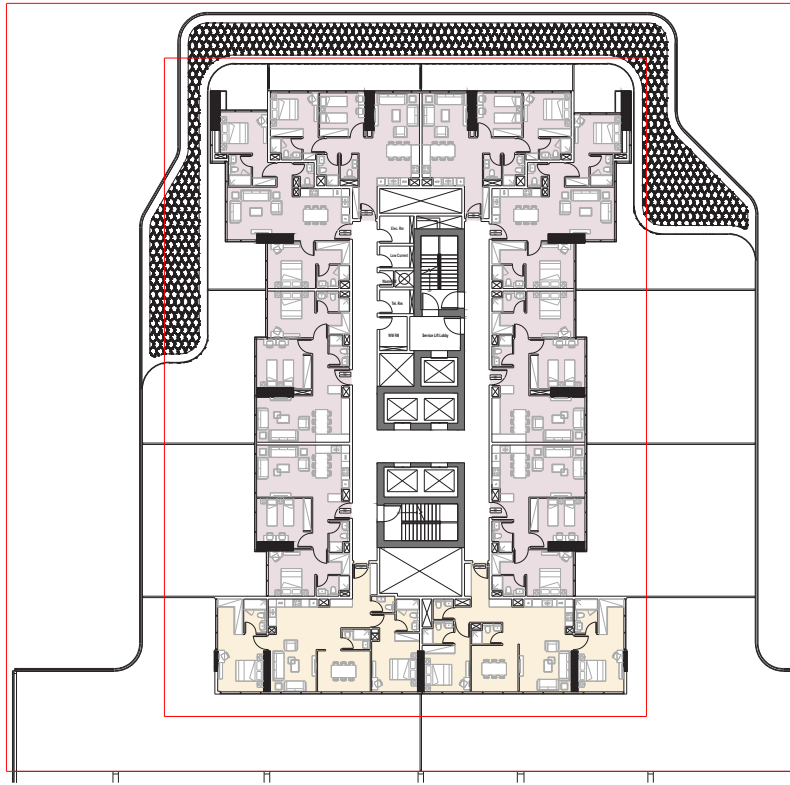
● J1B ● 1B ● 2B ● 3B ● 4B



# REPORTAGE TOWER

## 1<sup>ST</sup> FLOOR

● 11B ● 1B ● 2B ● 3B ● 4B



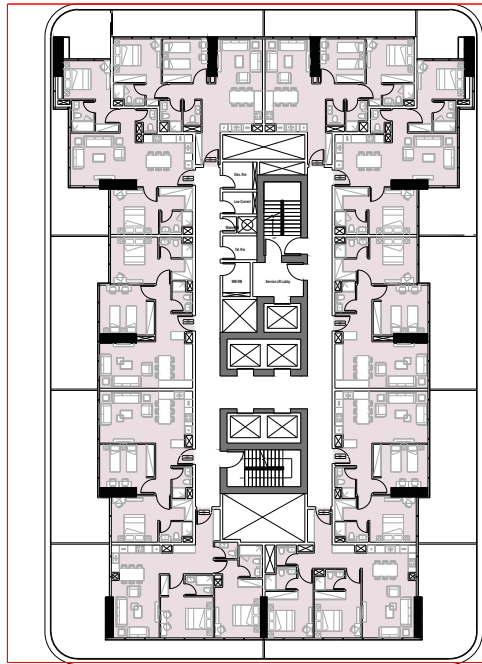
---

# REPORTAGE TOWER

---

TYPICAL 2<sup>ND</sup> TO 6<sup>TH</sup>

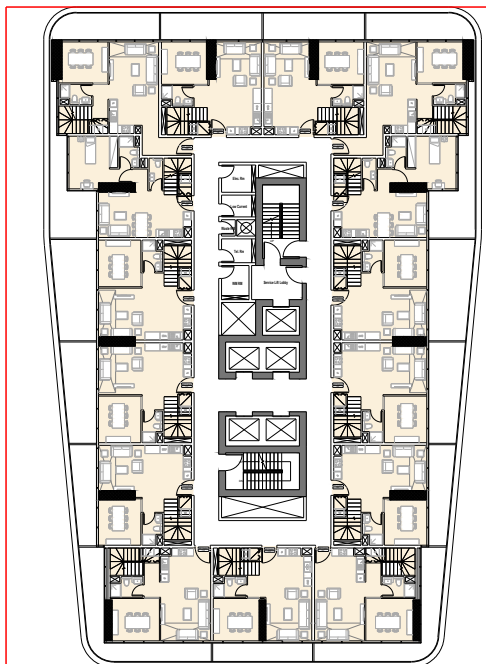
● J1B ● 1B ● 2B ● 3B ● 4B



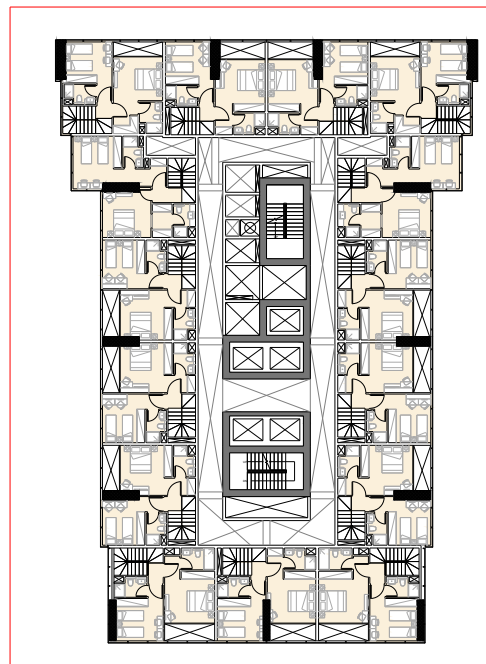
# REPORTAGE TOWER

TYPICAL 7<sup>TH</sup> TO 33<sup>RD</sup> (EXCEPT 19<sup>TH</sup>)

● J1B ● 1B ● 2B ● 3B ● 4B



LEVEL 1



LEVEL 2

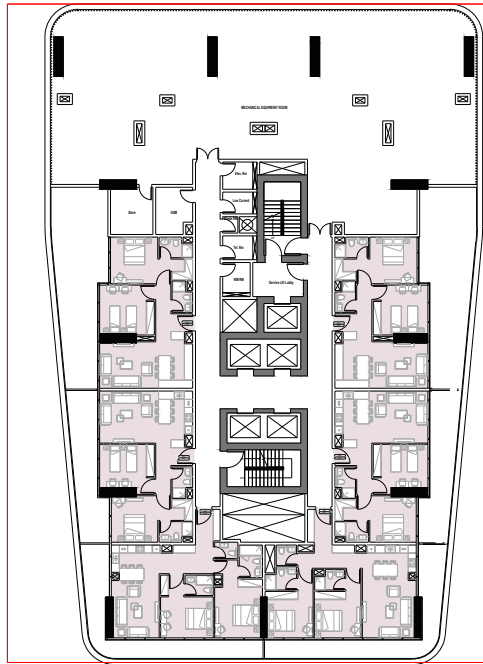
---

# REPORTAGE TOWER

---

## 19<sup>TH</sup> FLOOR

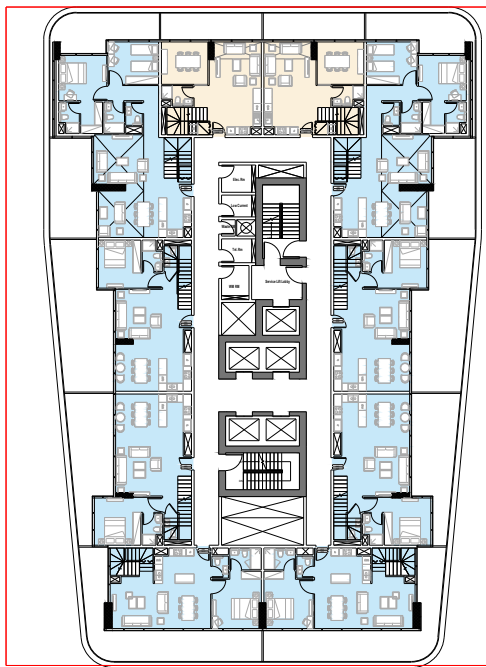
● 11B ● 1B ● 2B ● 3B ● 4B



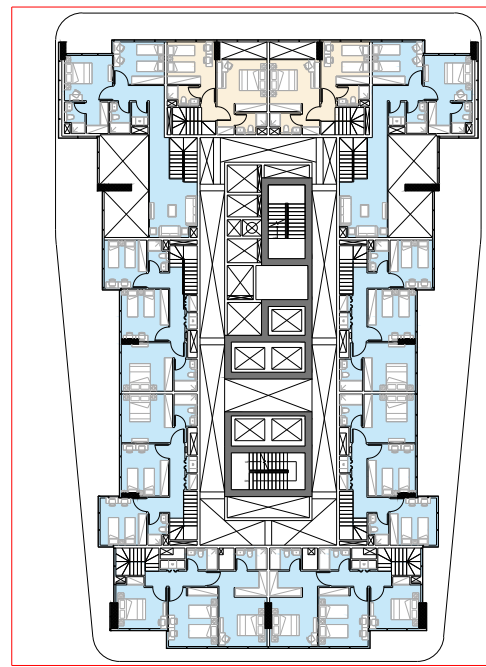
# REPORTAGE TOWER

## 34<sup>TH</sup> & 35<sup>TH</sup> FLOOR

● 11B ● 1B ● 2B ● 3B ● 4B



LEVEL 1



LEVEL 2

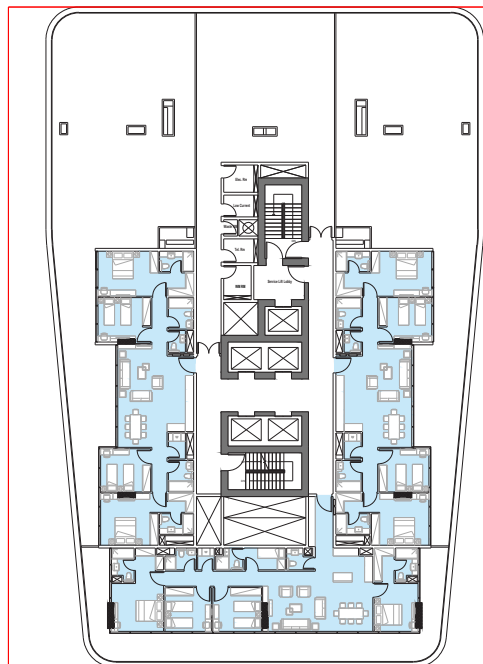
---

# REPORTAGE TOWER

---

## 36<sup>TH</sup> FLOOR

● J1B ● 1B ● 2B ● 3B ● 4B



# ريپورتاج العقارية

## Reportage.

### Properties

#### Abu Dhabi-UAE | Head Office

Tamouh Tower  
28<sup>th</sup> Floor, Al Reem Island  
P.O. Box: 111949  
Tollfree: +971 800 77 55 2  
info@reportageuae.com

#### Dubai-UAE

Anantara Business Tower  
3<sup>rd</sup> Floor, Business Bay  
P.O. Box: 27446  
Tollfree: +971 800 77 55 2  
info@reportageuae.com

#### Cairo-Egypt

Building 217  
North Teseen St.  
New Cairo  
T: +20 12 0008 1190  
info@reportageeg.com

#### Istanbul-Türkiye

Maslak Mh. Sümer Sk.  
No:4, İç Kapı No:3, Bodrum Kat,  
Maslak Office Building ( MOB) Sarıyer  
T: +90 530 774 9595  
info@reportage.com.tr

#### Riyadh-KSA

Building No. 3230  
Al Aflaj St., Al Suwaidi  
P.O. Box 12791  
T: +966 11 215 1110  
info@reportageuae.com

#### Moscow-Russia

Yefremova Street 10s1, k4/4  
bld sadovye kvartaly  
P.O. Box 119048  
info@reportagerussia.com

#### Kampala, Uganda

Plot 4, Philip Road  
Near German Embassy  
Kololo, Kampala, Uganda  
+256 756 111 434 | +256 763 331 572  
info@reportageug.com

#### Lahore - Pakistan

Plaza No. 185, Broadway  
Commercial phase 8, DHA Lahore  
+923309991111  
Info@reportageempire.com

#### Kigali, Rwanda

KG 334 ST 10, Nyarutarama,  
Kigali, Rwanda  
+250738532168 | +250794100607  
info@reportagerw.com

---

For more information, visit [reportageuae.com](http://reportageuae.com)  
or call 800 77 55 2 | +971 50 244 1078

---



#### Legal Disclaimer:

The information contained in this brochure is confidential and is for the exclusive use of the recipient. This brochure may not be reproduced, distributed, delivered, or furnished to any person without the prior written approval of Reportage Properties. No representation or warranty (expressed or implied) is made or can be given with respect to the accuracy or completeness of the information herein, or that any future offer of units or apartments in the project will conform to the terms described herein. Nothing in this leaflet should be construed as financial, legal, tax or regulatory advice. All accessories such as electronics, furniture, white goods, decorative elements and so forth included in this brochure are not part of the standard unit and used for illustration purposes only. All plans, layouts, pictures, renderings, information and details included in this brochure are indicative only and may change at any time up to the final 'as built' status in accordance with final designs of the project and regulatory approvals and planning permissions.

**R.**