



Tonino Lamborghini

RESIDENCES
RAS AL KHAIMAH

AL MARJAN ISLAND

INTRODUCING
TONINO LAMBORGHINI RESIDENCES



THE ARCHITECT'S DESIGN PHILOSOPHY

Guided by the Tonino Lamborghini ethos of elegance, uncompromised style, design and innovation, Tonino Lamborghini Residences by BNW Developments in RAK is conceived not merely as a residence but as an architectural statement where Italian sophistication merges with the elemental beauty of sea and sand. The design translates the rhythm of waves and dunes into cascading terraces and sky gardens, balancing exclusivity and openness through private villas and mansions alongside vibrant communal realms. Ultimately, it is a legacy of lifestyle and a timeless expression of identity, aspiration, and belonging on Ras Al Khaimah's coastline.

CREATIVE DIRECTION
MRS. ANGELA KRIEGER

INTERIOR DESIGN ARCHITECT
MR. CARLOS ROSSI



Al Marjan Island



64.4 m



2B+G+15+R

GRAND, CASCADING COASTAL MAJESTY

Tonino Lamborghini Residences' elevation draws a sculpted coastal profile, its cascading terraces and sky gardens tuned to the island's prevailing winds and tidal rhythms. A contemporary yet enduring language guides every line: assertive forms moderated by tactile, natural textures and discreet metallic accents refined by Tonino Lamborghini's iconic lines and elements. Terraces are carefully proportioned to maintain views, provide shade along the promenades and soften natural light. Native planting blends the architecture with the shoreline's ecosystem, while the landmark's form ensures privacy and a sense of calm. Altogether, the composition harmonises luxury with nature, projecting quiet confidence and timeless poise along Al Marjan Island.



378
Total Units



394,852.5 sqft
Gross Floor area



157,941 sqft
Plot Area



Ennio Lombardini



TONINO LAMBORGHINI MANSIONS

The Tonino Lamborghini Mansions are envisioned as grand seafront addresses where architectural distinction meets island serenity. Sized between 9,069.23 and 9,189.57 sq. ft. and starting from AED 46.41 million, they embody a rare balance of exclusivity and openness, offering an elevated way of living shaped by expansive coastal views, refined arrival experiences, and the unmistakable presence of Italian design. Each mansion is conceived not simply as a home, but as a statement of stature, privacy, and permanence, with handover marked for Q4 2028.









MANSION MASTER BEDROOM



MANSION BEDROOM



MANSION LIVING ROOM



MANSION FAMILY ROOM



MANSION DINING ROOM



MANSSION BEDROOM



MANSSION MASTER BATHROOM

UNIT PLANS



MANSION 5 BEDROOM

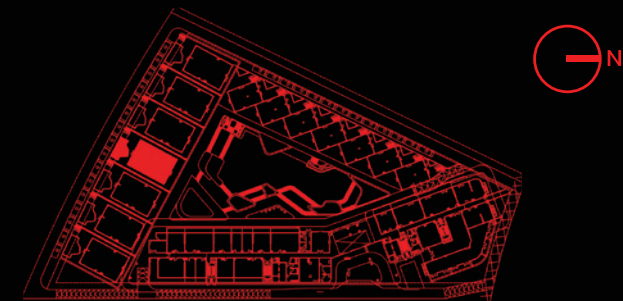
MANSION-GROUND FLOOR

1	Kitchen	4.10X4.00m
2	Living Room	4.90X7.10m
3	Dining	5.50X3.40m
4	Bedroom 01	4.70X4.00m
5	Bathroom 01	2.10X2.50m
6	Powder Room	1.30X2.05m
7	Maid Room	2.50X3.20m
8	Maid Bathroom	2.50X1.50m
9	Laundry	1.40X1.40m
10	Store	1.40X2.00m
11	Pump Room	1.40X2.00m
12	Pool	8.29X5.66 m
13	Garden	13.70X7.16m

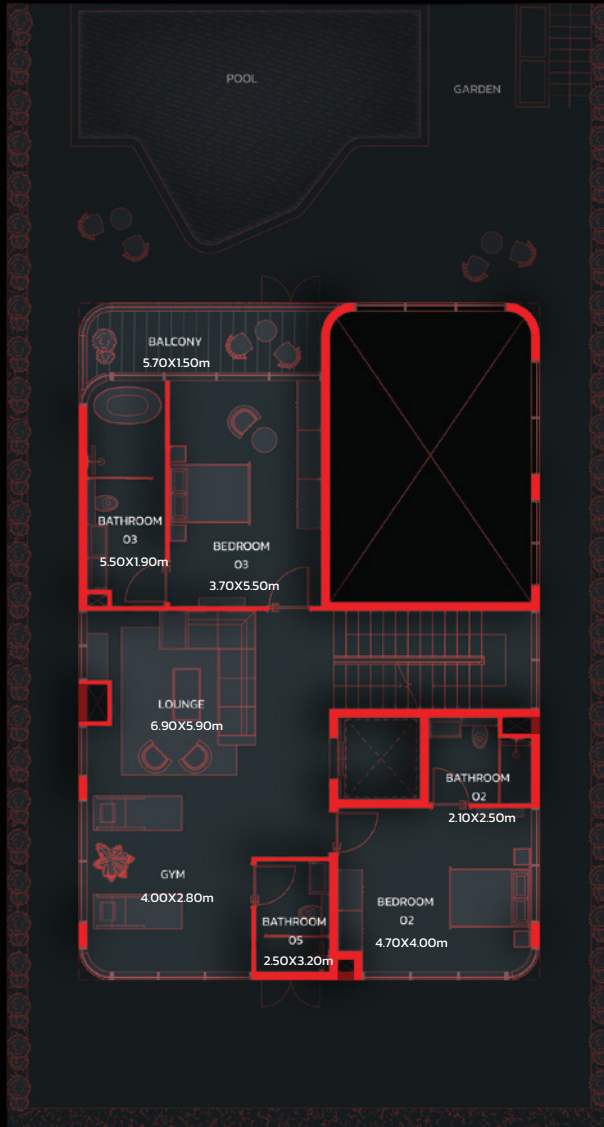
Suite Area 5994.85 Sq.ft to 5994.85 Sq.ft

Balcony Area 3074.39 Sq.ft to 3194.73 Sq.ft

Total Area 9069.24 Sq.ft to 9189.58 Sq.ft



Key plan : Ground Floor

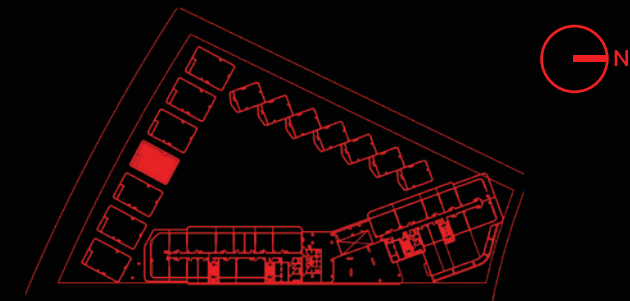


MANSION 5 BEDROOM

MANSION-FIRST FLOOR

1	Lounge 01	6.90X5.90m
2	Gym	4.00X2.80m
3	Bedroom 02	4.70X4.00m
4	Bathroom 02	2.10X2.50m
5	Bedroom 03	3.70X5.50m
6	Bathroom 03	5.50X1.90m
7	Bathroom 05	2.50X3.20m
8	Balcony	5.70X1.50m

Suite Area	5994.85 Sq.ft	to	5994.85 Sq.ft
Balcony Area	3074.39 Sq.ft	to	3194.73 Sq.ft
Total Area	9069.23 Sq.ft	to	9189.57 Sq.ft



Key plan : First Floor

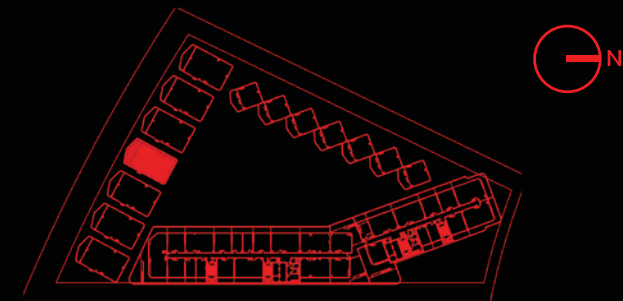


MANSION 5 BEDROOM

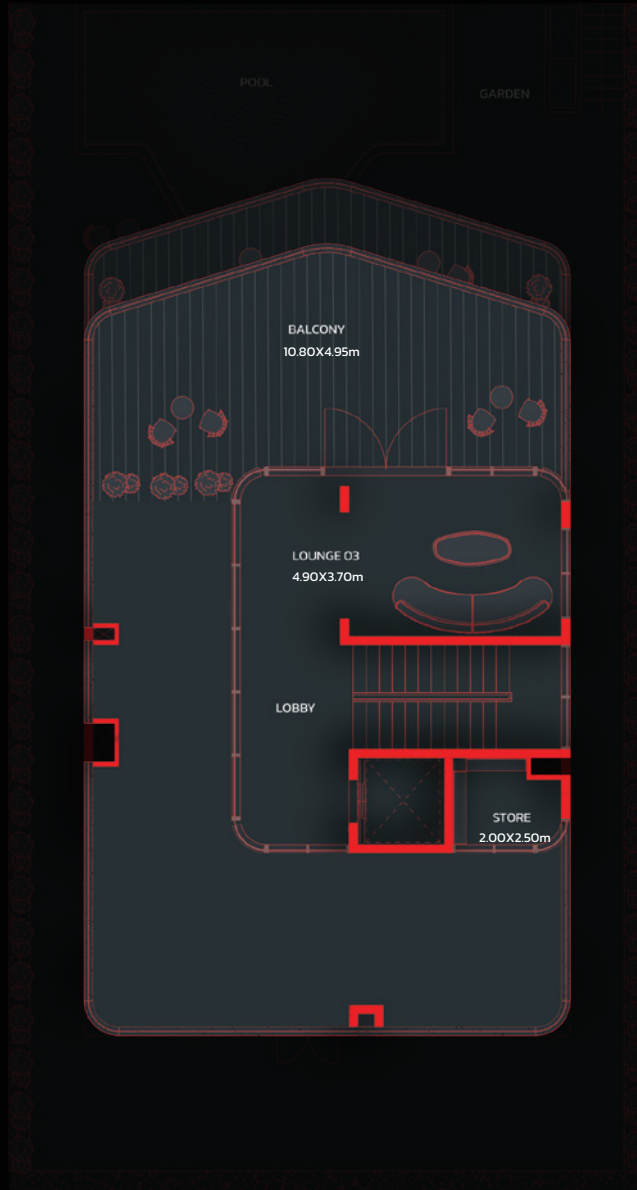
MANSION-SECOND FLOOR

1	Lounge 02	8.80X5.90m
2	Bedroom 04	4.70X4.00m
3	Bathroom 04	2.10X2.50m
4	Bathroom 06	1.80X2.70m
5	Master Bedroom	7.10X4.30m
6	Master Bathroom	3.60X3.40m
7	Dress	3.70X3.70m
8	Study	2.60X3.95m
9	Balcony	3.05X10.40m

Suite Area	5994.85 Sq.ft	to	5994.85 Sq.ft
Balcony Area	3074.39 Sq.ft	to	3194.73 Sq.ft
Total Area	9069.24 Sq.ft	to	9189.58 Sq.ft



Key plan : Second Floor

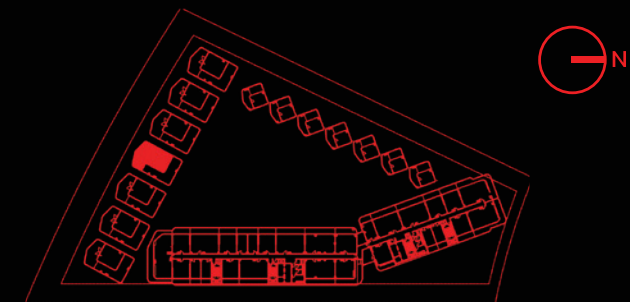


MANSION 5 BEDROOM

MANSION-THIRD FLOOR

1	Lounge 03	4.90X3.70m
2	Store	2.00X2.50m
3	Balcony	10.80X4.95m

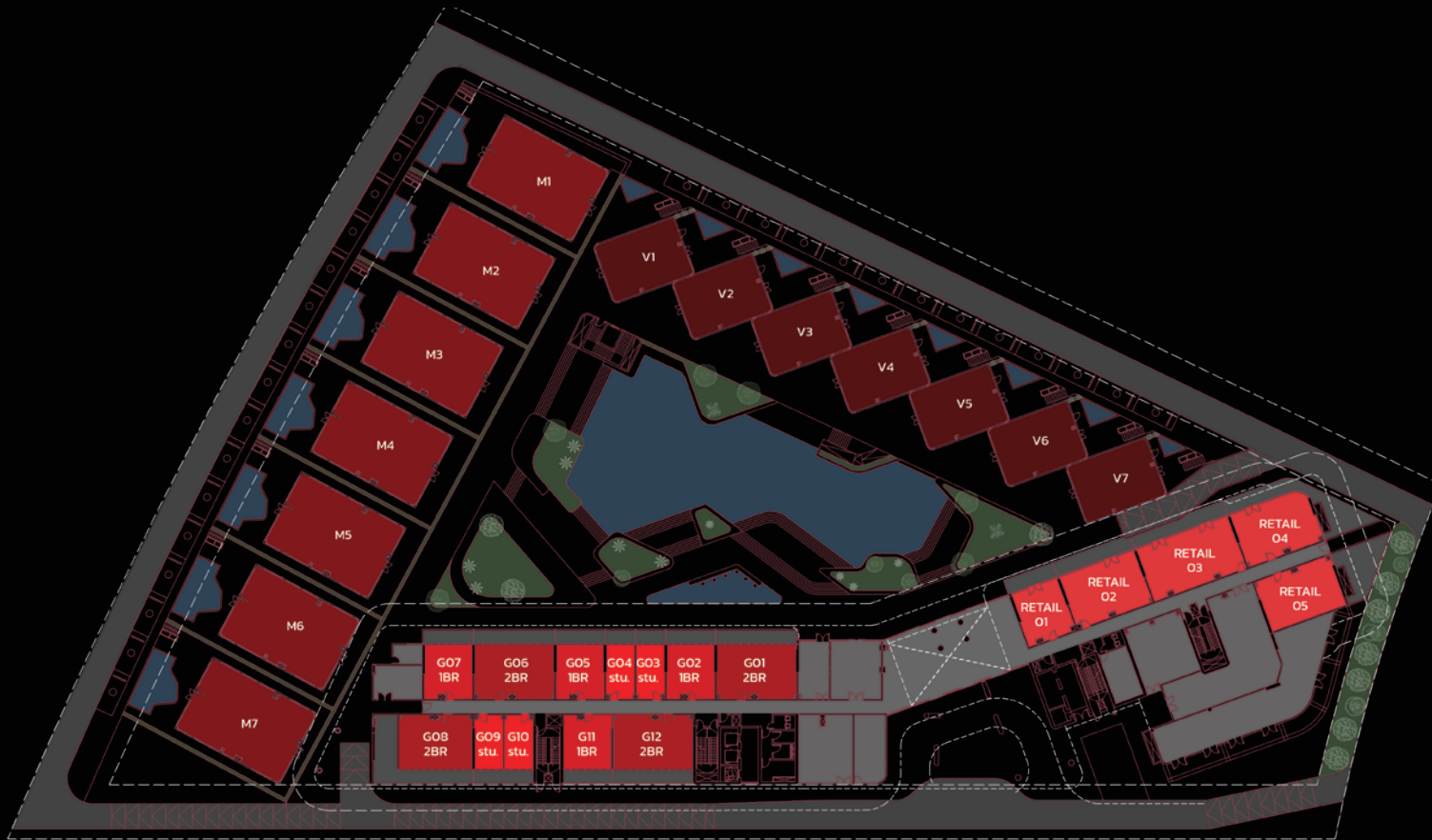
Suite Area	5994.85 Sq.ft	to	5994.85 Sq.ft
Balcony Area	3074.39 Sq.ft	to	3194.73 Sq.ft
Total Area	9069.24 Sq.ft	to	9189.58 Sq.ft



Key plan : Third Floor

FLOOR PLANS

GROUND FLOOR LAYOUT



● STUDIO

● 1 BHK

● 2 BHK

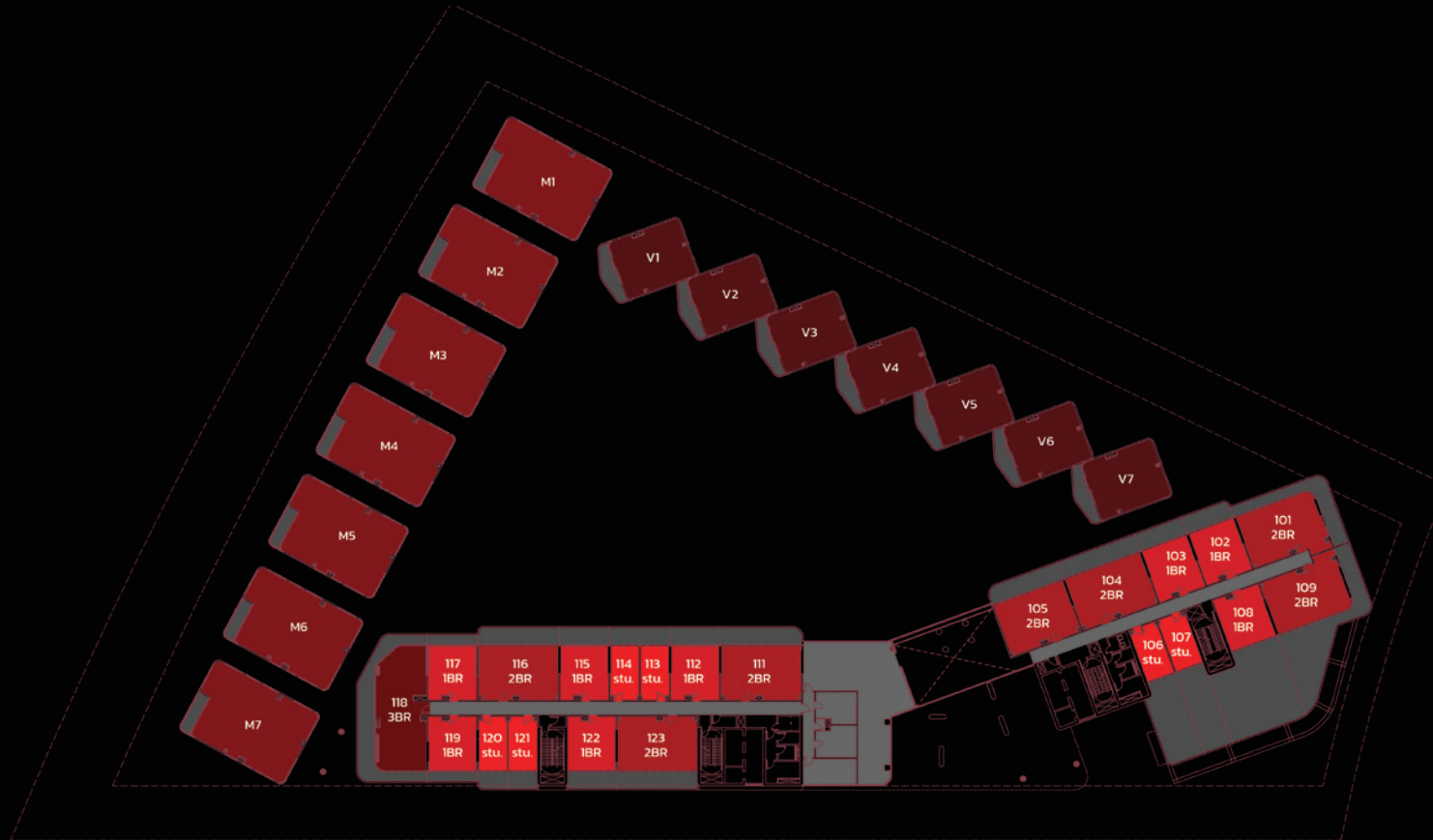
● 3 BHK

● MANSION

● VILLA

Disclaimer: All dimensions, materials and drawings are approximate. Information is subject to change without notice, at the developer's absolute discretion. The actual area may vary from the stated area. Drawings are not to scale. All images used are for illustrative purposes only and do not represent the actual size, features, specifications, fittings and furnishings. The developer reserves the right to make revisions/alterations, at the absolute discretion without any liability whatsoever.

FIRST FLOOR LAYOUT



● STUDIO

● 1 BHK

● 2 BHK

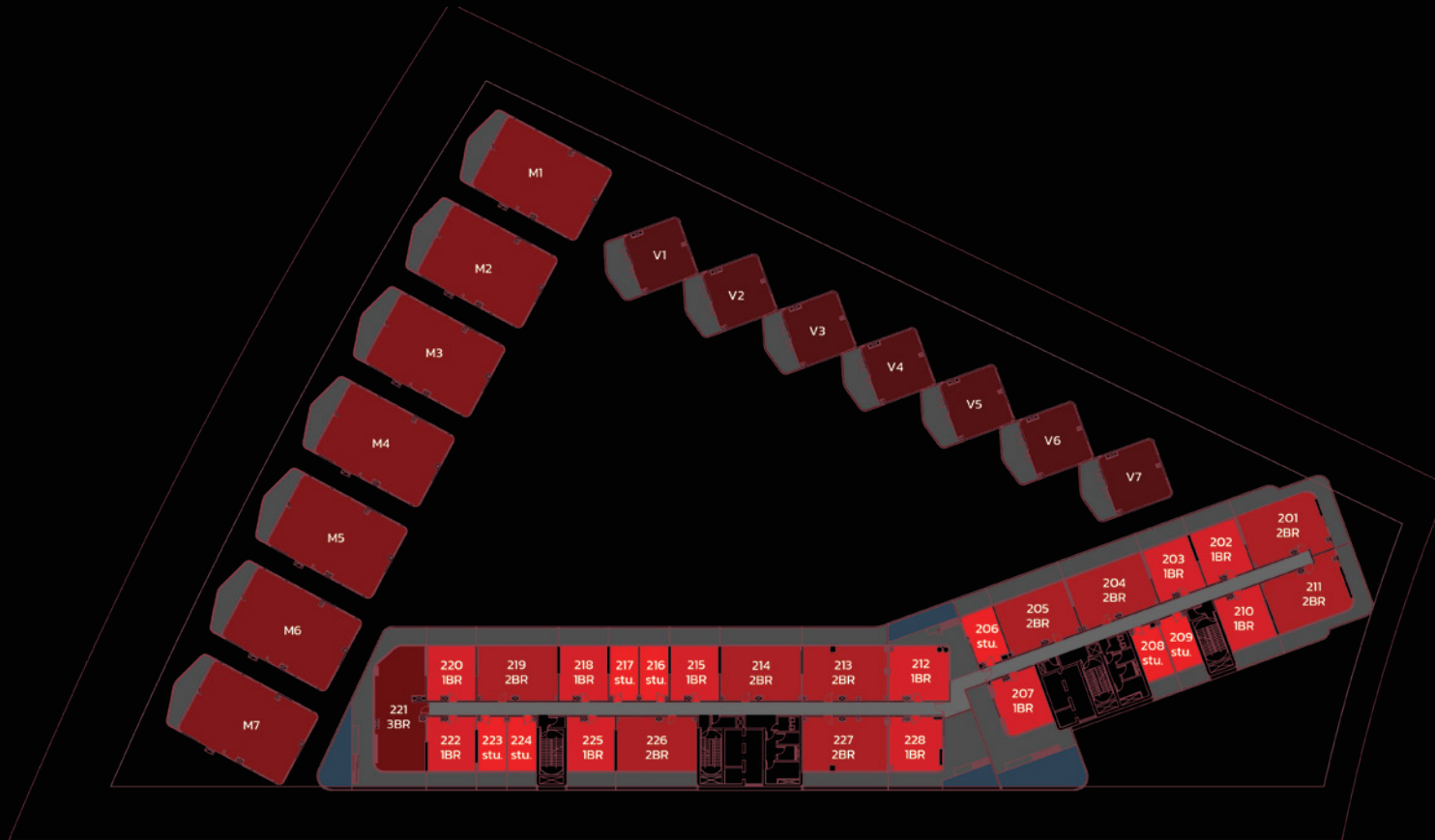
● 3 BHK

● MANSION

● VILLA

Disclaimer: All dimensions, materials and drawings are approximate. Information is subject to change without notice, at the developer's absolute discretion. The actual area may vary from the stated area. Drawings are not to scale. All images used are for illustrative purposes only and do not represent the actual size, features, specifications, fittings and furnishings. The developer reserves the right to make revisions/alterations, at the absolute discretion without any liability whatsoever.

SECOND FLOOR LAYOUT



● STUDIO

● 1 BHK

● 2 BHK

● 3 BHK

● MANSION

● VILLA

Disclaimer: All dimensions, materials and drawings are approximate. Information is subject to change without notice, at the developer's absolute discretion. The actual area may vary from the stated area. Drawings are not to scale. All images used are for illustrative purposes only and do not represent the actual size, features, specifications, fittings and furnishings. The developer reserves the right to make revisions/alterations, at the absolute discretion without any liability whatsoever.



ITALIAN LEGACY.
NOW LIVED.



BNW DEVELOPMENTS

بي ان دبليو للتطوير العقاري

33rd Floor, Uhora Tower, Business Bay, Dubai, UAE

☎ 800BNWUAE

🌐 BNW.AE

✉ INFO@BNW.AE